

SUPPLEMENTAL, METHOD | Logistic prediction model

The logistic prediction model for predicting fulfilment of all-or-none was defined as:

$$\text{Log}(\text{probability}/(1-\text{probability}))_i = \alpha + \beta_1 \text{ (if male)}_i + \beta_{2,1} \text{ (if low comorbidity)}_i + \beta_{2,2} \text{ (if moderate comorbidity)}_i + \beta_{2,3} \text{ (if moderate high comorbidity)}_i + \beta_{3,1} \text{ (if displaced medial fracture)}_i + \beta_{3,2} \text{ (if per- or subtrochanteric fracture)}_i + \beta_{3,3} \text{ (if missing)}_i + \beta_{4,1} \text{ (if more than elementary school, but no university degree)}_i + \beta_{4,2} \text{ (if university degree)}_i + \beta_{4,3} \text{ (if missing)}_i + \beta_{5,1} \text{ (if medium family mean income)}_i + \beta_{5,2} \text{ (if high family mean income)}_i + \beta_6 \text{ (if immigrant)}_i + \beta_7 \text{ (if living alone)}_i + \beta_{8,1} \text{ (if employed)}_i + \beta_{8,2} \text{ (if missing)}_i + \beta_9 \text{ (if living at a nursing home)}_i + \beta_{10} \text{ (if living in a peripheral municipality)}_i + \text{spline}(\text{Age})_i + e_i$$

where i is the value for that individual, and e_i is the individual random error. The effect of age was modelled by a restricted cubic spline with 7 knots.

SUPPLEMENTAL TABLE 1 | Patient characteristics for best-off and worst-off patients from 2007 to 2016

	Calendar year									
	2007	2008	2009	2010	2011	2012	2013	2014	2015	2016
BEST-OFF PATIENTS										
Patients (N)	507	648	628	546	633	616	617	555	646	637
Age group, % (n)										
65-74 years	49.7 (252)	27.8 (180)	6.2 (39)	30.2 (165)	19.1 (121)	21.4 (132)	41.3 (255)	29.4 (163)	31.6 (204)	23.4 (149)
75-84 years	45.2 (229)	56.8 (368)	63.4 (398)	38.8 (212)	54.2 (343)	37.2 (229)	33.2 (205)	51.5 (286)	44.7 (289)	36.6 (233)
≥85 years	5.1 (26)	15.4 (100)	30.4 (191)	31.0 (169)	26.7 (169)	41.4 (255)	25.5 (157)	19.1 (106)	23.7 (153)	40.0 (255)
Sex, % (n)										
Male	7.1 (36)	4.3 (28)	0.0 (0)	28.8 (157)	26.4 (167)	22.7 (140)	20.4 (126)	29.6 (164)	15.6 (101)	8.0 (51)
Female	92.9 (471)	95.7 (620)	100.0 (628)	71.3 (389)	73.6 (466)	77.3 (476)	79.6 (491)	70.5 (391)	84.4 (545)	92.0 (586)
Cohabitant status, % (n)										
Single	41.2 (209)	13.7 (89)	74.5 (468)	57.3 (313)	55.0 (348)	65.8 (405)	70.7 (436)	55.1 (306)	54.5 (352)	63.1 (402)
Living together	58.8 (298)	86.3 (559)	25.5 (160)	42.7 (233)	45.0 (285)	34.3 (211)	29.3 (181)	44.7 (249)	45.5 (294)	36.9 (235)
Charlson Comorbidity index % (n)										
No	4.7 (24)	27.3 (177)	7.0 (44)	32.2 (176)	38.9 (246)	34.7 (214)	62.1 (383)	56.4 (313)	55.9 (361)	71.4 (455)
Low	24.9 (126)	33.5 (217)	0.0 (0)	35.7 (195)	37.1 (235)	21.4 (132)	20.6 (127)	9.0 (50)	22.5 (145)	10.8 (69)
Moderate	29.4 (149)	3.4 (22)	0.0 (0)	13.2 (72)	11.4 (72)	14.3 (88)	6.8 (42)	11.5 (64)	13.9 (90)	11.5 (73)
High	41.0 (208)	35.8 (232)	93.0 (584)	18.9 (103)	12.6 (80)	29.6 (182)	10.5 (65)	23.1 (128)	7.7 (50)	6.3 (40)
Level of education, % (n)										
Low Primary school (7-10 years)	48.5 (246)	80.1 (519)	67.7 (425)	9.7 (53)	39.5 (250)	76.1 (469)	75.4 (465)	37.5 (208)	80.8 (522)	68.8 (438)
More than primary School, but no university degree	41.6 (211)	12.2 (79)	28.0 (176)	80.6 (440)	30.5 (193)	10.1 (62)	11.0 (68)	35.9 (199)	7.7 (50)	23.1 (147)
Obtained university degree	1.6 (8)	1.1 (7)	*	7.9 (43)	17.5 (111)	7.6 (47)	6.0 (37)	22.2 (123)	2.6 (17)	1.3 (8)
Missing	8.3 (42)	6.6 (43)	*	1.8 (10)	12.5 (79)	6.2 (38)	7.6 (47)	4.5 (25)	8.8 (57)	6.9 (44)

	Calendar year									
	2007	2008	2009	2010	2011	2012	2013	2014	2015	2016
Family mean income, % (n)										
Low	19.3 (98)	23.6 (153)	64.8 (407)	27.1 (148)	30.8 (195)	42.9 (264)	26.1 (161)	20.4 (113)	28.0 (181)	19.9 (127)
Medium	56.6 (287)	51.7 (335)	13.9 (87)	18.5 (101)	13.7 (87)	29.6 (182)	49.1 (303)	19.1 (106)	39.3 (254)	42.1 (268)
High	24.1 (122)	24.7 (160)	21.3 (134)	54.4 (297)	55.5 (351)	27.6 (170)	24.8 (153)	60.5 (336)	32.7 (211)	38.0 (242)
Migrant status, % (n)										
Native	*	100.0 (648)	100.0 (628)	*	85.5 (541)	100.0 (616)	*	*	94.4 (610)	100.0 (637)
Immigrant	*	0.0 (0)	0.0 (0)	*	14.5 (92)	0.0 (0)	*	*	5.6 (36)	0.0 (0)
Fracture type, % (n)										
Non-displaced medial fracture	0.00 (0)	5.3 (34)	0.0 (0)	29.1 (159)	51.7 (327)	10.6 (65)	16.4 (101)	44.0 (244)	15.6 (101)	4.4 (28)
Displaced medial fracture	62.1 (315)	69.6 (451)	45.9 (288)	46.5 (254)	29.4 (186)	52.1 (321)	57.4 (354)	33.5 (186)	39.5 (255)	85.4 (544)
Per- or subtrochanteric fracture	37.9 (192)	25.2 (163)	54.1 (340)	24.4 (133)	*	37.3 (230)	26.3 (162)	22.5 (125)	44.9 (290)	10.2 (65)
Missing	0.0 (0)	0.0 (0)	0.0 (0)	0.0 (0)	*	0.0 (0)	0.0 (0)	0.0 (0)	0.0 (0)	0.0 (0)
Employment status, % (n)										
Employed	0.0 (0)	13.7 (89)	1.4 (9)	8.2 (45)	8.9 (56)	4.6 (28)	*	18.7 (104)	5.3 (34)	1.9 (12)
Retired	0.0 (0)	86.3 (559)	98.6 (619)	91.8 (501)	91.2 (577)	95.5 (588)	*	81.3 (451)	94.7 (612)	98.1 (625)
Missing	100.0 (507)	0.0 (0)	0.0 (0)	0.0 (0)	0.0 (0)	0.0 (0)	0.0 (0)	0.0 (0)	0.0 (0)	0.0 (0)
Nursing home residence, % (n)										
Living in own home	100.0 (507)	100.0 (648)	100.0 (628)	98.0 (535)	94.2 (596)	93.3 (575)	98.7 (609)	100.0 (555)	94.0 (607)	91.5 (583)
Nursing home residence	0.0 (0)	0.0 (0)	0.0 (0)	2.0 (11)	5.9 (37)	6.7 (41)	1.3 (8)	0.0 (0)	6.0 (39)	8.5 (54)
Type of municipality, % (n)										
Non-rural municipality	98.6 (500)	83.0 (538)	100.0 (628)	92.3 (504)	75.5 (478)	12.3 (76)	60.1 (371)	*	42.4 (274)	50.1 (319)
Peripheral municipality	1.4 (7)	17.0 (110)	0.0 (0)	7.7 (42)	24.5 (155)	87.7 (540)	39.9 (246)	*	57.6 (372)	49.9 (318)

	Calendar year									
	2007	2008	2009	2010	2011	2012	2013	2014	2015	2016
WORST-OFF PATIENTS										
Patients (N)	507	648	628	546	633	616	617	555	646	637
Age group, % (n)										
65-74 years	6.7 (34)	13.1 (85)	11.6 (73)	16.1 (88)	29.9 (189)	17.2 (106)	12.5 (77)	13.2 (73)	18.3 (118)	22.1 (141)
75-84 years	44.8 (227)	25.5 (165)	22.0 (138)	39.4 (215)	18.3 (116)	37.0 (228)	38.4 (237)	22.3 (124)	33.9 (219)	34.5 (220)
≥85 years	48.5 (246)	61.4 (398)	66.4 (417)	44.5 (243)	51.8 (328)	45.8 (282)	49.1 (303)	64.5 (358)	47.8 (309)	43.3 (276)
Sex, % (n)										
Male	51.7 (262)	69.0 (447)	56.5 (355)	24.4 (133)	34.7 (220)	29.8 (184)	34.9 (215)	24.3 (135)	38.9 (251)	31.2 (199)
Female	48.3 (245)	31.0 (201)	43.5 (273)	75.6 (413)	65.2 (413)	70.1 (432)	65.2 (402)	75.7 (420)	61.2 (395)	68.8 (438)
Cohabitant status, % (n)										
Single	62.9 (319)	81.9 (531)	74.2 (466)	66.3 (362)	70.8 (448)	63.5 (391)	63.5 (392)	71.2 (395)	61.3 (396)	61.5 (392)
Living together	37.1 (188)	18.1 (117)	25.8 (162)	33.7 (184)	29.2 (185)	36.5 (225)	36.5 (225)	28.8 (160)	38.7 (250)	38.5 (245)
Charlson comorbidity index, % (n)										
No	21.7 (110)	13.3 (86)	11.3 (71)	12.3 (67)	*	12.0 (74)	8.1 (50)	7.0 (39)	16.7 (108)	16.6 (106)
Low	19.1 (97)	14.4 (93)	34.7 (218)	20.9 (114)	*	21.8 (134)	21.2 (131)	35.7 (198)	18.9 (122)	23.1 (147)
Moderate	15.0 (76)	42.3 (274)	37.9 (238)	25.6 (140)	20.2 (128)	23.9 (147)	24.6 (152)	21.1 (117)	16.4 (106)	23.9 (152)
High	44.2 (224)	30.1 (195)	16.1 (101)	41.2 (225)	77.1 (488)	42.4 (261)	46.0 (284)	36.2 (201)	48.0 (310)	36.4 (232)
Level of education, % (n)										
Low Primary school (7-10 year)	48.5 (246)	12.8 (83)	23.7 (149)	55.0 (300)	63.8 (404)	35.4 (218)	34.7 (214)	62.9 (349)	41.0 (265)	44.1 (281)
More than primary School, but no university degree	11.8 (60)	21.5 (139)	14.3 (90)	11.2 (61)	16.4 (104)	30.4 (187)	33.7 (208)	16.4 (91)	35.5 (229)	34.9 (222)
Obtained university Degree	20.1 (102)	14.2 (92)	5.1 (32)	9.5 (52)	6.0 (38)	9.9 (61)	14.4 (89)	4.3 (24)	18.6 (120)	14.4 (92)
Missing	19.5 (99)	51.5 (334)	56.9 (357)	24.4 (133)	13.7 (87)	24.4 (150)	17.2 (106)	16.4 (91)	5.0 (32)	6.6 (42)
Family mean income, % (n)										
Low	61.5 (312)	53.2 (345)	48.1 (302)	44.51 (243)	31.60 (200)	29.71 (183)	22.5 (139)	22.0 (122)	13.3 (86)	12.4 (79)
Medium	14.2 (72)	17.3 (112)	34.7 (218)	29.49 (161)	54.98 (348)	32.79 (202)	29.2 (180)	49.7 (276)	31.1 (201)	36.4 (232)
High	24.3 (123)	29.5 (191)	17.2 (108)	26.01 (142)	13.43 (85)	37.50 (231)	48.3 (298)	28.3 (157)	55.6 (359)	51.2 (326)

	Calendar year									
	2007	2008	2009	2010	2011	2012	2013	2014	2015	2016
Migrant status, % (n)										
Native	89.2 (452)	79.2 (513)	94.6 (594)	96.0 (524)	100.0 (633)	81.2 (500)	87.2 (538)	91.0 (505)	98.5 (636)	95.1 (606)
Immigrant	10.9 (55)	20.8 (135)	5.4 (34)	4.0 (22)	0.0 (0)	18.8 (116)	12.8 (79)	9.0 (50)	1.6 (10)	4.9 (31)
Fracture type, % (n)										
Non-displaced medial Fracture	54.2 (275)	8.5 (55)	21.7 (136)	0.0 (0)	0.0 (0)	*	*	*	0.0 (0)	0.0 (0)
Displaced medial fracture	19.3 (98)	24.9 (161)	32.8 (206)	*	16.0 (101)	*	*	*	7.7 (50)	*
Per- or subtrochanteric Fracture	26.4 (134)	66.7 (432)	45.5 (286)	*	41.6 (263)	23.9 (147)	26.6 (164)	24.5 (136)	8.8 (57)	*
Missing	0.0 (0)	0.0 (0)	0.0 (0)	97.3 (531)	42.5 (269)	70.0 (431)	64.7 (399)	56.2 (312)	83.4 (539)	*
Employment status, % (n)										
Employed	0.0 (0)	*	1.3 (8)	2.8 (15)	*	2.4 (15)	6.6 (41)	*	2.3 (15)	3.3 (21)
Retired	0.0 (0)	*	98.7 (620)	97.3 (531)	*	97.6 (601)	93.4 (576)	*	97.7 (631)	96.7 (616)
Missing	100.0 (507)	0.0 (0)	0.0 (0)	0.0 (0)	0.0 (0)	0.0 (0)	0.0 (0)	0.0 (0)	0.0 (0)	0.0 (0)
Nursing home residence, % (n)										
Non-nursing home	100.0 (507)	100.0 (648)	31.1 (195)	81.1 (443)	70.9 (449)	73.4 (452)	71.0 (438)	62.9 (349)	82.8 (535)	86.5 (551)
Nursing home	0.0 (0)	0.0 (0)	69.0 (433)	18.9 (103)	29.1 (184)	26.6 (164)	29.0 (179)	37.1 (206)	17.2 (111)	13.5 (86)
Type of municipality, % (n)										
Non-rural municipality	65.3 (331)	90.6 (587)	76.1 (478)	92.9 (507)	94.9 (601)	94.3 (581)	92.2 (569)	55.3 (307)	95.8 (619)	95.9 (611)
Peripheral municipality	34.7 (176)	9.4 (61)	23.9 (150)	7.1 (39)	5.1 (32)	5.7 (35)	7.8 (48)	44.7 (248)	4.2 (27)	4.1 (26)

* = values below 5

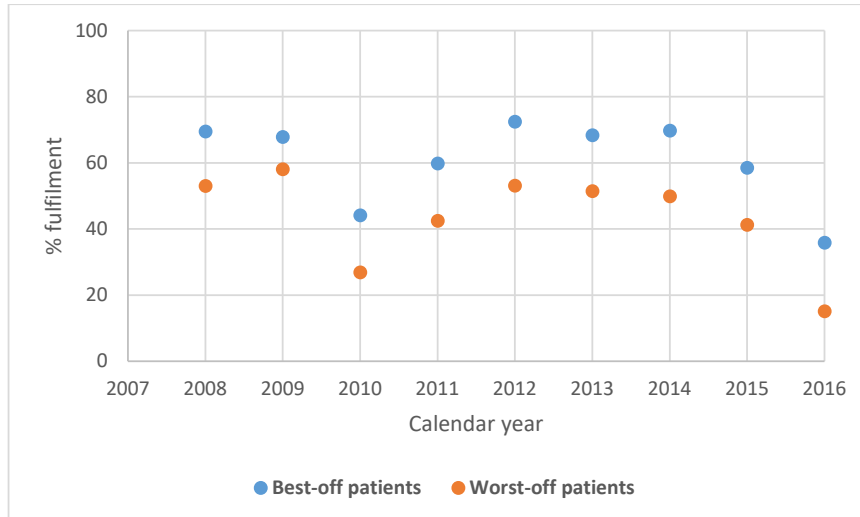
SUPPLEMENTAL TABLE 2 | The proportion of best-off- and worst-off patients, who fulfilled the all-or-none and the individual process performance measures as well as the difference in fulfilment between best-off and worst-off patients, by calendar year

	Calendar year									
	2007	2008	2009	2010	2011	2012	2013	2014	2015	2016
ALL-OR-NONE										
Best-off patients	63.5 (507)	67.8 (648)	71.2 (628)	41.6 (546)	59.7 (633)	70.9 (616)	68.4 (617)	67.2 (555)	56.7 (646)	34.1 (637)
Worst-off patients	51.9 (507)	54.5 (648)	55.7 (628)	19.2 (546)	39.5 (633)	43.7 (616)	47.5 (617)	41.3 (555)	28.5 (646)	11.0 (637)
Difference between worst-off and best-off patients, pp (95% CI)	11.6 (5.6;17.7)	13.3 (8.0;18.5)	15.4 (10.2;20.7)	22.3 (17.0;27.6)	20.2 (14.8;25.6)	27.3 (22.0;32.6)	20.9 (15.5;26.3)	25.9 (20.3;31.6)	28.2 (23.0;33.3)	23.1 (18.7;27.5)
PROCESS PERFORMANCE MEASURES, INDIVIDUALLY										
Pain assessment, % (n)										
Best-off patients	84.5 (446)	85.4 (554)	89.1 (550)	82.1 (468)	86.8 (507)	93.6 (467)	91.9 (521)	90.4 (488)	N/A	N/A
Worst-off patients	72.5 (415)	81.0 (478)	78.5 (381)	56.5 (473)	75.1 (469)	75.2 (459)	73.5 (457)	61.5 (390)	N/A	N/A
Difference between worst-off and best-off patients, pp (95% CI)	12.0 (6.5;17.5)	4.4 (-0.2;9.0)	10.6 (5.7;15.5)	25.6 (19.9;31.3)	11.7 (6.8;16.6)	18.4 (13.9;23.0)	18.4 (13.7;23.1)	28.8 (23.3;34.3)	N/A	N/A
Mobilization within 24 hours postoperative, % (n)										
Best-off patients	N/A	N/A	N/A	78.7 (536)	85.0 (608)	84.7 (596)	89.4 (604)	88.9 (539)	N/A	80.9 (613)
Worst-off patients	N/A	N/A	N/A	52.8 (536)	68.8 (606)	73.5 (592)	78.3 (572)	67.9 (529)	N/A	54.4 (559)
Difference between worst-off and best-off patients, pp (95% CI)	N/A	N/A	N/A	25.9 (20.5;31.4)	16.2 (11.6;20.9)	11.3 (6.7;15.8)	11.1 (6.9;15.3)	21.0 (16.2;25.8)	N/A	26.5 (21.4;31.7)
Fall prevention, % (n)										
Best-off patients	N/A	N/A	N/A	74.2 (546)	88.3 (633)	94.8 (616)	91.7 (617)	89.9 (555)	89.8 (628)	93.4 (623)
Worst-off patients	N/A	N/A	N/A	56.6 (546)	80.9 (633)	75.2 (616)	83.6 (617)	72.8 (555)	69.1 (598)	63.2 (592)
Difference between worst-off and best-off patients, pp (95% CI)	N/A	N/A	N/A	17.6 (12.0;23.1)	7.4 (3.5;11.4)	19.6 (15.8;23.5)	8.1 (4.5;11.7)	17.1 (12.6;21.6)	20.7 (16.3;25.1)	30.2 (25.9;34.6)

Assessment of need of anti-osteoporotic medication, % (n)										
Best-off patients	N/A	N/A	N/A	89.2 (546)	93.4 (633)	95.6 (616)	95.5 (617)	93.5 (555)	91.2 (628)	95.4 (623)
Worst-off patients	N/A	N/A	N/A	63.7 (546)	86.1 (633)	81.5 (616)	88.3 (617)	76.8 (555)	73.1 (598)	64.9 (592)
Difference between worst-off and best-off patients, pp (95% CI)	N/A	N/A	N/A	25.5 (20.7;30.3)	7.3 (3.9;10.6)	14.1 (10.7;17.6)	7.1 (4.1;10.2)	16.8 (12.7;20.8)	18.2 (14.0;22.4)	30.5 (26.3;34.7)
Assessment of nutrition risk, % (n)										
Best-off patients	89.0 (507)	89.7 (648)	91.1 (627)	N/A	N/A	N/A	N/A	N/A	84.7 (646)	94.0 (637)
Worst-off patients	79.3 (506)	81.0 (647)	81.0 (627)	N/A	N/A	N/A	N/A	N/A	62.1 (646)	55.1 (637)
Difference between worst-off and best-off patients, pp (95% CI)	9.7 (5.2;14.2)	8.7 (4.8;12.5)	10.0 (6.2;13.8)	N/A	N/A	N/A	N/A	N/A	22.6 (17.9;27.3)	38.9 (34.7;43.2)
Post-discharge rehabilitation, % (n)										
Best-off patients	90.3 (412)	94.8 (580)	96.5 (572)	94.0 (519)	96.2 (605)	98.5 (592)	97.5 (605)	95.9 (538)	N/A	97.2 (613)
Worst-off patients	83.3 (414)	92.3 (533)	95.5 (551)	92.4 (489)	92.7 (605)	94.6 (594)	97.1 (595)	95.0 (524)	N/A	91.7 (579)
Difference between worst-off and best-off patients, pp (95% CI)	7.0 (2.4;11.6)	2.5 (-0.4;5.4)	1.0 (-1.3;3.3)	1.6 (-1.5;4.7)	3.5 (0.9;6.0)	3.9 (1.8;5.9)	0.4 (-1.4;2.2)	0.9 (-1.6;3.4)	N/A	5.5 (2.9;8.1)
Assessment of functional level at admission, % (n)										
Best-off patients	88.5 (504)	90.4 (646)	90.3 (627)	N/A	N/A	N/A	85.4 (404)	85.6 (555)	95.4 (646)	94.2 (637)
Worst-off patients	81.3 (507)	81.7 (646)	83.6 (628)	N/A	N/A	N/A	76.8 (426)	64.3 (555)	79.7 (646)	83.1 (637)
Difference between worst-off and best-off patients, pp (95% CI)	7.2 (2.8;11.6)	8.7 (4.9;12.4)	6.7 (3.0;10.4)	N/A	N/A	N/A	8.6 (3.3;13.9)	21.3 (16.3;26.2)	15.6 (12.1;19.1)	11.1 (7.7;14.6)
Assessment of functional level at discharge, % (n)										
Best-off patients	84.7 (503)	86.7 (645)	86.1 (627)	72.5 (546)	79.3 (633)	88.5 (616)	90.3 (617)	86.9 (555)	94.6 (628)	96.0 (623)
Worst-off patients	76.5 (506)	77.0 (642)	76.6 (628)	45.1 (546)	66.5 (633)	70.5 (616)	78.3 (617)	79.6 (555)	80.3 (598)	82.6 (592)
Difference between worst-off and best-off patients, pp (95% CI)	8.2 (3.4;13.1)	9.7 (5.5;13.9)	9.5 (5.3;13.8)	27.5 (21.9;33.1)	12.8 (7.9;17.6)	18.0 (13.6;22.4)	12.0 (8.0;16.0)	7.2 (2.8;11.6)	14.3 (10.7;18.0)	13.4 (10.0;16.8)
Prevention of osteoporotic fractures, % (n)										
Best-off patients	86.6 (447)	92.0 (577)	96.4 (575)	N/A	N/A	N/A	N/A	N/A	N/A	N/A
Worst-off patients	81.8 (445)	85.8 (565)	89.0 (545)	N/A	N/A	N/A	N/A	N/A	N/A	N/A
Difference between worst-off and best-off patients, pp (95% CI)	4.8 (0.0;9.6)	6.2 (2.6;9.8)	7.4 (4.3;10.4)	N/A	N/A	N/A	N/A	N/A	N/A	N/A
Time to surgery ≤ 24 hours, % (n)										
Best-off patients	N/A	N/A	N/A	N/A	N/A	N/A	N/A	N/A	74.2 (646)	76.3 (637)
Worst-off patients	N/A	N/A	N/A	N/A	N/A	N/A	N/A	N/A	61.2 (646)	62.8 (637)

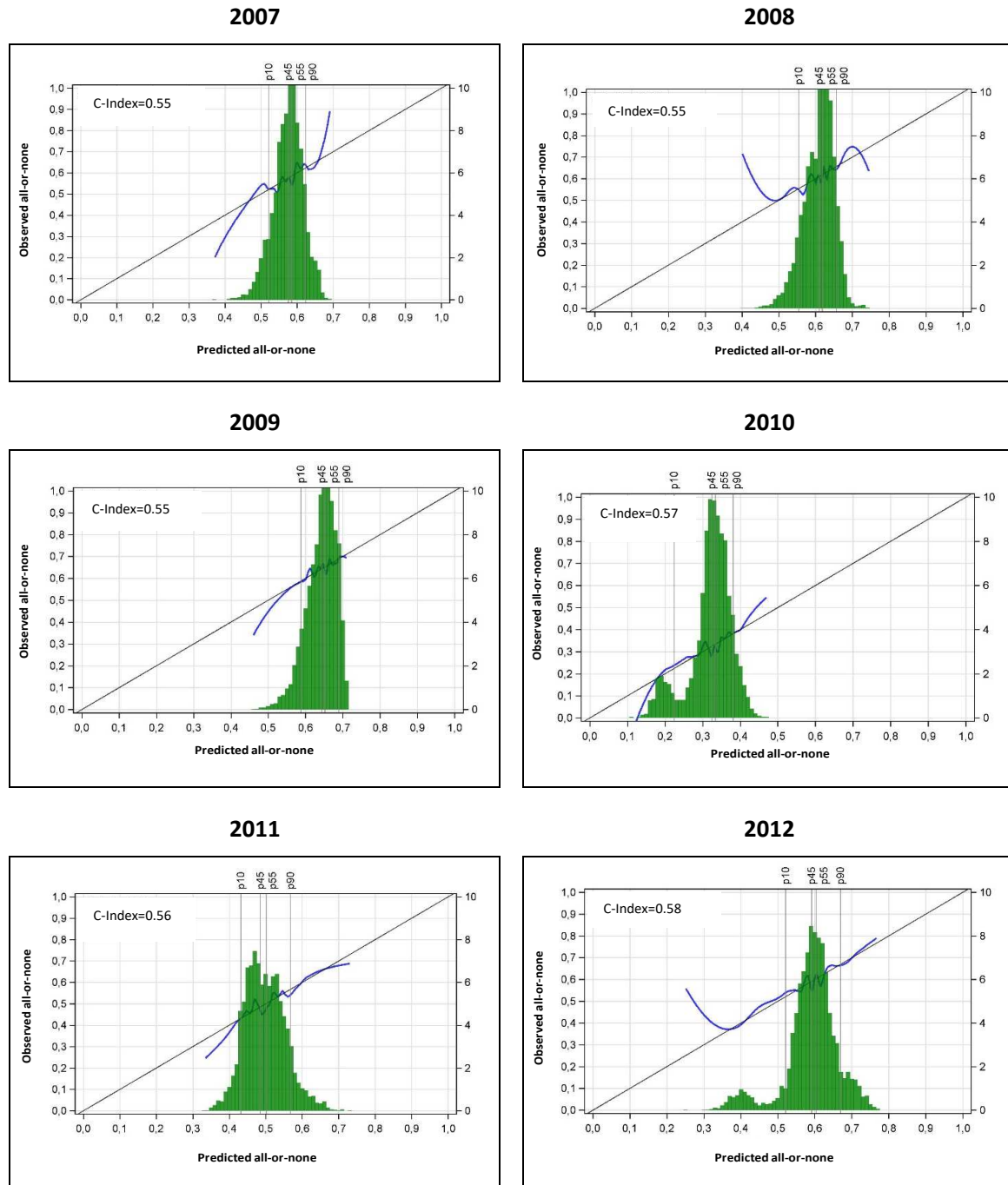
Difference between worst-off and best-off patients, pp (95% CI)	N/A	N/A	N/A	N/A	N/A	N/A	N/A	N/A	13.0 (7.9;18.1)	13.5 (8.5;18.5)
Time to surgery ≤ 36 hours, % (n)										
Best-off patients	N/A	N/A	N/A	N/A	N/A	N/A	N/A	N/A	87.0 (646)	89.8 (637)
Worst-off patients	N/A	N/A	N/A	N/A	N/A	N/A	N/A	N/A	80.7 (646)	79.1 (637)
Difference between worst-off and best-off patients, pp (95% CI)	N/A	N/A	N/A	N/A	N/A	N/A	N/A	N/A	6.3 (2.3;10.4)	10.7 (6.7;14.6)
Preoperative optimization, % (n)										
Best-off patients	N/A	N/A	N/A	N/A	N/A	N/A	N/A	N/A	N/A	58.7 (637)
Worst-off patients	N/A	N/A	N/A	N/A	N/A	N/A	N/A	N/A	N/A	29.2 (637)
Difference between worst-off and best-off patients, pp (95% CI)	N/A	N/A	N/A	N/A	N/A	N/A	N/A	N/A	N/A	29.5 (24.3;34.7)

SUPPLEMENTAL, FIGURE 1 | The proportion of best-off- and worst-off patients, who fulfilled the all-or-none score by calendar year excluding patients with missing information on education and fracture type

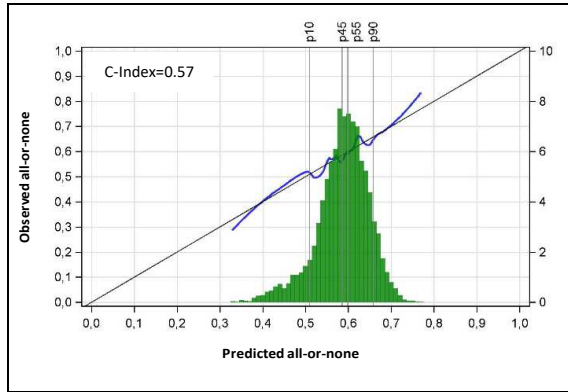


SUPPLEMENTAL FIGURE 2 | Calibration curves, c-index and histogram of the distribution of predicted all-or-none for the prediction model by calendar year.

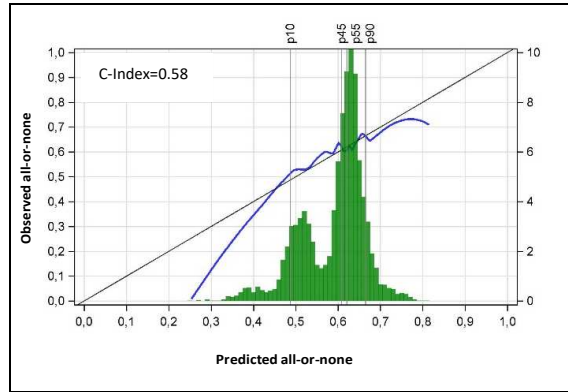
- Histogram of the distribution of predicted all-or-none
- Identity line
- Calibration curve



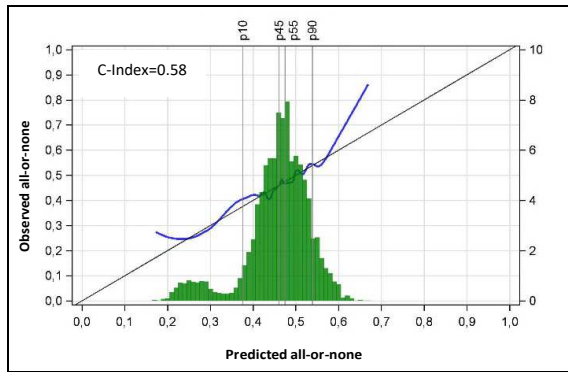
2013



2014



2015



2016

