

Table of content of Online Supplement

Table S1. Healthcare activities and corresponding unit costs based on 2018 rates for mutual service as used at the department of neurology of the UMCU, adjusted to 2021 euros using the general price index from the Dutch Central Bureau of Statistics.....	p. 2
Table S2. Mean costs in patients who died during and who survived hospital admission and the first three months after discharge.....	p. 3
Table S3. Patient characteristics and healthcare activities per age subgroup.....	p. 4
Table S4. Patient characteristics and healthcare activities per TOAST subgroup.....	p. 6
Table S5. Patient characteristics and healthcare activities per discharge destination.....	p. 8
Table S6. Patient characteristics and healthcare activities per modified Rankin scale subgroup at discharge.....	p. 10
Figure S1. Relative mean costs during hospital admission per patient subgroup (with total costs per subgroup set at 100).....	p. 12
Figure S2. Relative mean costs during first three months after discharge per patient subgroup (with total costs per subgroup set at 100).....	p. 13

Table S1. Healthcare activities and corresponding unit costs based on 2018 rates for mutual service as used at the department of neurology of the UMCU, adjusted to 2021 euros using the general price index from the Dutch Central Bureau of Statistics

Healthcare activity	Cost
Admitted day ward	€ 532,05
Admitted day ICU	€ 2443,07
Laboratory diagnostics [#]	€ 8,15
CT-perfusion brain	€ 199,47
MRA-head	€ 212,87
MRI-brain	€ 205,89
CT-brain	€ 146,15
Duplex ultrasound	€ 110,08
PFO correction	€ 3162,57
Implantable cardiac monitor	€ 456,19
Elektrocardiogram	€ 50,73*
Transthoracic echocardiogram	€ 119,59
Transesophageal echocardiogram	€ 287,11
Holter	€ 84,01
Rehabilitation consultation	€ 117,80
Physiotherapy	€ 9,46
Speech therapy	€ 10,84
Occupational therapy	€ 7,99
Social work	€ 9,46
Psychologist – first consult	€ 131,24
Psychologist – follow-up consult	€ 65,63
Dietitian	€ 18,95
Carotid endarterectomy	€ 344,44
Lumbar puncture	€ 103,01
Counseling patient about IAT	€ 49,62
Intravenous thrombolysis	€ 52,40
First visit outpatient clinic physician	€ 165,11
Follow-up visit outpatient clinic physician	€ 151,32
Follow-up visit nurse practitioner	€ 142,93
Phone consult physician	€ 58,08
Phone consult nurse practitioner	€ 23,71
Visit outpatient clinic of rehabilitation doctor	€ 28,29

[#] = costs for the healthcare activity laboratory diagnostics, regardless of the type of test; * = based on 2016 prices; IAT = intra-arterial thrombectomy; UMCU = University Medical Centre Utrecht

Table S2. Mean costs in patients who died during and who survived hospital admission and the first three months after discharge

Subgroup	Mean total costs	Mean total costs during admission	Mean total costs after discharge
During hospital admission			
Died, n=20	€ 12.637,45	€ 12.637,45	€ 0,00
Survived, n=533	€ 6958,25	€ 6547,50	€ 410,77
3 months after discharge			
Died, n=29	€ 8993,55	€ 8784,26	€ 209,28
Survived, n=426	€ 6741,85	€ 6289,26	€ 452,60

Table S3. Patient characteristics and healthcare activities per age subgroup

	<55 years n = 137	55-75 years n = 272	>75 years n = 146
Mean age, y (SD)	45.0 (7.6)	66.1 (5.6)	82.3 (5.2)
Women, n (%)	58 (42.3)	96 (35.3)	72 (49.3)
Smoking			
Yes, n(%)	50 (36.5) ^a	80 (29.4) ^a	10 (6.8) ^a
Former, n(%)	31 (22.6) ^a	118 (43.4) ^a	79 (54.1) ^a
Drugs			
Yes, n(%)	4 (2.9)	5 (1.8)	0 (0)
Former, n(%)	5 (3.7)	3 (1.1)	0 (0)
Cardiovascular history			
Hypertension, n(%)	40 (29.2) ^a	169 (62.1) ^a	97 (66.4) ^a
Hyperlipidemia, n(%)	30 (22.1) ^a	123 (45.2) ^a	72 (49.3) ^b
Diabetes, n(%)	7 (5.1) ^a	46 (16.9) ^a	31 (21.2) ^a
Ischaemic stroke (including TIA), n(%)	19 (13.9) ^a	66 (24.3) ^a	52 (35.6) ^a
Intracerebral haemorrhage, n(%)	2 (1.5)	7 (2.6)	4 (2.7)
Subarachnoid haemorrhage, n(%)	3 (2.2)	7 (2.6)	0 (0)
Cerebral venous sinus thrombosis, n(%)	0 (0)	0 (0)	0 (0)
Coronary artery disease, n(%)	7 (5.1) ^b	42 (15.4) ^a	31 (21.2) ^b
Atrial fibrillation, n(%)	1 (0.7) ^a	34 (12.5) ^a	44 (30.1) ^b
Peripheral artery disease, n(%)	2 (1.5) ^a	27 (9.9) ^a	14 (9.6) ^a
Other history			
Malignancy, n(%)	6 (4.4) ^a	49 (18.0) ^a	40 (27.4) ^a
NIHSS			
Mean (SD)	6.5 (6.1) ^a	6.0 (5.5) ^a	6.6 (6.0) ^a
Median (range)	4 (0-25) ^a	4 (0-23) ^a	5 (0-23) ^a
TOAST classification			
Large artery atherosclerosis, n(%)	17 (12.4) ^c	87 (32.0) ^b	44 (30.1) ^b
Cardio-embolic stroke, n(%)	12 (8.8) ^c	49 (18.0) ^b	40 (27.4) ^b
Small vessel disease, n(%)	17 (12.4) ^c	52 (19.1) ^b	23 (15.8) ^b
Other determined cause, n(%)	33 (24.1) ^c	19 (7.0) ^b	4 (2.7) ^b
Undetermined cause, n(%)	51 (37.2) ^c	59 (21.7) ^b	31 (21.2) ^b
Mean door-to-needle time, min (SD)	33.7 (19.5)	33.9 (15.6)	45.9 (28.9)
mRS			
Pre-stroke, median (range)	0 (0-3) ^a	0 (0-5) ^a	1,5 (0-5) ^a
Discharge, median (range)	2 (0-6) ^a	2 (0-6) ^a	3 (0-6) ^a
3 months, median (range)	2 (0-5) ^d	2 (0-6) ^d	3 (0-6) ^d
Admitted days, mean (SD)	10.3 (9.1)	9.0 (7.7)	10.0 (7.4)
Number of healthcare activities during hospital admission			
Laboratory, mean (SD)	8.7 (11.4)	7.6 (10.9)	7.7 (9.6)
Radiology, mean (SD)	2.0 (1.1)	2.0 (1.2)	1.7 (0.9)
Cardiology, mean (SD)	2.0 (1.4)	1.9 (1.8)	1.9 (1.4)
Consultation of other specialists, mean (SD)	2.0 (1.4)	1.7 (1.6)	1.7 (1.4)
Consultation of paramedics, mean (SD)	9.3 (12.3)	7.9 (11.7)	8.4 (9.5)
IVT, n(%)	16 (11.7)	38 (14.0)	17 (11.6)
IAT, n(%)	4 (2.9)	15 (4.7)	4 (2.7)
Carotid endarterectomy, n(%)	1 (0.7)	11 (4.1)	7 (4.8)

Number of healthcare activities after hospital discharge

Laboratory, mean (SD)	1.6 (4.9)	2.1 (6.1)	1.4 (3.8)
Radiology, mean (SD)	0.4 (0.8)	0.4 (0.5)	0.2 (0.5)
Cardiology, mean (SD)	0.9 (1.5)	0.8 (2.0)	0.6 (1.5)
Consultation of other specialists, mean (SD)	0.2 (0.5)	0.2 (0.8)	0.1 (0.5)
Consultation of paramedics, mean (SD)	3.5 (9.3)	1.6 (6.2)	1.0 (3.9)
Visit outpatient clinic, mean (SD)	1.7 (1.9)	1.3 (1.7)	0.8 (1.3)
Visit nurse practitioner outpatient clinic, mean (SD)	0.1 (0.3)	0.1 (0.3)	0.1 (0.3)
Phone consult outpatient clinic, mean (SD)	0.5 (0.8)	0.4 (0.8)	0.3 (1.1)
Phone consult nurse practitioner, mean (SD)	0.2 (0.4)	0.2 (0.5)	0.2 (0.5)
ED visit, n(%)	16 (11.7)	37 (13.6)	15 (10.3)

^a = <2% missings; ^b = 2-5% missings; ^c = 5-10% missings; ^d = 10-20% missings; CABG = coronary artery bypass graft; ED = emergency department; IAT = intra-arterial thrombectomy; IVT = intravenous thrombolysis; min = minutes; mRS = modified Rankin Scale; n = number; NIHSS = National Institute of Health Stroke Scale; SD = standard deviation; TIA = transient ischemic attack; TOAST = Trial of Org 10172 in Acute Stroke Treatment; y = year

Table S4. Patient characteristics and healthcare activities per TOAST subgroup

	LVD n = 148		CE n = 101		SVD n = 92		OD n = 56		UD n = 141	
Mean age, y (SD)	68.8	(11.7)	69.3	(14.6)	66.5	(12.0)	53.1	(13.4)	62.9	(16.1)
Women, n (%)	54	(36.5)	44	(43.6)	39	(42.4)	25	(44.6)	55	(39.0)
Smoking										
Yes, n(%)	52	(35.1) ^a	20	(19.8) ^a	18	(19.6) ^a	12	(21.4) ^a	32	(22.7) ^a
Former, n(%)	58	(39.2) ^a	40	(39.6) ^a	42	(45.7) ^a	20	(35.7) ^a	61	(43.3) ^a
Drugs										
Yes, n(%)	0	(0.0)	4	(4.0)	1	(1.1)	0	(0.0)	3	(2.1)
Former, n(%)	2	(1.4)	3	(3.0)	0	(0)	0	(0.0)	3	(2.1)
Cardiovascular history										
Hypertension, n(%)	97	(65.5) ^a	60	(59.4) ^a	54	(58.7) ^a	18	(32.1) ^a	67	(47.5) ^a
Hyperlipidemia, n(%)	73	(49.3) ^b	45	(45.0) ^a	40	(43.5) ^a	12	(21.4) ^a	46	(32.6) ^a
Diabetes, n(%)	24	(16.2) ^a	14	(13.9) ^{a(c)}	17	(18.5) ^a	1	(1.8) ^a	23	(16.3) ^a
Ischaemic stroke, n(%)	44	(29.7) ^a	27	(26.7) ^a	14	(15.2) ^a	7	(12.5) ^a	40	(28.4) ^a
Intracerebral haemorrhage, n(%)	3	(2.0)	2	(2.0)	6	(6.5)	0	(0.0)	2	(1.4)
Subarachnoid haemorrhage, n(%)	1	(0.7)	1	(1.0)	2	(2.2)	3	(5.4)	3	(2.1)
CVST, n(%)	0	(0.0)	0	(0.0)	0	(0.0)	0	(0.0)	0	(0.0)
Coronary artery disease, n(%)	26	(17.6) ^a	20	(19.8) ^b	13	(14.1) ^b	2	(3.6)	16	(11.3) ^b
Atrial fibrillation, n(%)	6	(4.1) ^a	44	(43.6) ^b	5	(5.4) ^a	1	(1.8)	19	(13.9) ^b
Peripheral artery disease, n(%)	18	(12.2)	9	(8.9) ^a	3	(3.3) ^a	0	(0.0)	10	(7.1) ^a
Other history										
Malignancy, n(%)	26	(17.6) ^a	25	(24.8) ^a	9	(9.8) ^a	7	(12.5) ^a	27	(19.1) ^a
NIHSS										
Mean (SD)	6.9	(6.3) ^a	8.1	(6.2) ^a	3.7	(3.6) ^a	7.0	(6.1) ^a	6.1	(5.5) ^a
Median (range)	4	(0-22) ^a	7	(0-23) ^a	2	(0-18) ^a	5	(0-21) ^a	4	(0-25) ^a
Mean DTNT, min (SD)	42.7	(27.5)	34.2	(14.0)	41.2	(25.1)	34.9	(23.8)	31.8	(12.3)
mRS										
Pre-stroke, median (range)	0	(0-4) ^a	1	(0-5) ^a	0	(0-4) ^a	0	(0-5) ^a	0	(0-4) ^a
Discharge, median (range)	3	(0-6) ^a	3	(0-6) ^a	2	(0-5) ^a	3	(0-6) ^a	2	(0-6) ^a
3 months, median (range)	2	(0-6) ^d	3	(0-6) ^d	2	(0-6) ^d	2	(0-6) ^d	2	(0-6) ^d
Admitted days, mean (SD)	10.5	(8.8)	11.8	(8.6)	6.8	(4.1)	10.5	(9.4)	9.6	(7.9)
Number of healthcare activities during admission										
Laboratory, mean (SD)	8.2	(12.3)	10.8	(11.4)	4.4	(4.2)	7.8	(10.9)	8.0	(11.3)
Radiology, mean (SD)	2.0	(1.1)	1.8	(1.0)	2.0	(1.0)	1.9	(1.0)	1.9	(1.2)
Cardiology, mean (SD)	1.6	(1.2)	2.8	(2.4)	1.5	(1.0)	1.4	(1.2)	2.1	(1.6)
Other consultations, mean (SD)	1.8	(1.8)	2.0	(1.5)	1.4	(1.1)	1.6	(1.3)	1.8	(1.5)
Paramedics, mean (SD)	8.6	(11.3)	9.3	(11.3)	5.7	(8.8)	10.3	(13.0)	8.4	(11.9)
IVT, n(%)	16	(10.8)	13	(12.9)	11	(12.0)	11	(19.6)	20	(14.2)
IAT, n(%)	12	(6.8)	4	(4.0)	0	(0.0)	2	(3.6)	5	(3.5)
Carotid endarterectomy, n(%)	27	(12.2)	0	(0.0)	0	(0.0)	0	(0.0)	1	(0.7)
Number of healthcare activities after hospital discharge										
Laboratory, mean (SD)	2.2	(6.1)	2.7	(7.9)	1.1	(2.4)	2.1	(6.1)	1.1	(2.7)
Radiology, mean (SD)	0.4	(0.8)	0.2	(0.5)	0.2	(0.5)	0.6	(1.2)	0.3	(0.7)
Cardiology, mean (SD)	0.6	(1.5)	1.4	(2.9)	0.5	(1.2)	0.5	(1.1)	0.9	(1.4)
Other consultations, mean (SD)	0.2	(0.8)	0.1	(0.4)	0.2	(0.5)	0.2	(0.5)	0.3	(0.8)
Paramedics, mean (SD)	1.4	(7.4)	1.3	(4.9)	1.9	(5.1)	3.6	(10.2)	2.1	(6.2)
Visit outpatient clinic, mean (SD)	1.0	(1.6)	1.1	(1.5)	1.4	(1.5)	1.4	(2.0)	1.5	(2.0)
Visit NP outpatient, mean (SD)	0.1	(0.3)	0.0	(0.2)	0.2	(0.4)	0.1	(0.2)	0.2	(0.4)

Phone consult, mean (SD)	0.4 (0.8)	0.3 (0.8)	0.3 (0.6)	0.3 (0.8)	0.4 (0.8)
Phone consult NP, mean (SD)	0.2 (0.5)	0.1 (0.4)	0.3 (0.6)	0.2 (0.4)	0.2 (0.5)
ED visit, n(%)	18 (12.2)	14 (13.9)	12 (13.0)	9.0 (16.1)	13 (9.2)

^a = <2% missings; ^b = 2-5% missings; ^c = 5-10% missings; ^d = 10-20% missings; CABG = coronary artery bypass graft; CE = cardio-embolic; CVST = cerebral venous sinus thrombosis; DTNT = door-to-needle-time; ED = emergency department; IAT = intra-arterial thrombectomy; IVT = intravenous thrombolysis; LVD = large vessel disease; min = minutes; mRS = modified Rankin Scale; n = number; NIHSS = National Institute of Health Stroke Scale; NP = nurse practitioner; OD = other determined; SD = standard deviation; SVD = small vessel disease; TIA = transient ischemic attack; TOAST = Trial of Org 10172 in Acute Stroke Treatment; UD = undetermined; y = year

Table S5. Patient characteristics and healthcare activities per discharge destination

	Home n = 284	HIR n = 93	Nursing home n = 15	LIR n = 73
Mean age, y (SD)	63.5 (14.1)	59.2 (13.4)	74.1 (14.8)	76.7 (12.6)
Women, n (%)	111 (39.1)	36 (38.7)	7 (46.7)	35 (47.9)
Smoking				
Yes, n(%)	71 (25.0) ^a	31 (33.3) ^a	2 (13.3) ^a	13 (17.8) ^a
Former, n(%)	114 (40.1) ^a	31 (33.3) ^a	6 (40.0) ^a	32 (43.8) ^a
Drugs				
Yes, n(%)	7 (2.5)	0 (0.0)	0 (0.0)	0 (0.0)
Former, n(%)	3 (1.1)	4 (4.3)	0 (0.0)	3 (2.5)
Cardiovascular history				
Hypertension, n(%)	154 (54.2) ^a	42 (45.2) ^a	6 (40.0) ^a	47 (64.4) ^b
Hyperlipidemia, n(%)	116 (41.0) ^a	27 (29.0) ^a	5 (33.3) ^a	34 (46.6) ^a
Diabetes, n(%)	41 (14.4) ^a	5 (5.4) ^a	4 (26.7) ^a	19 (26.0) ^a
Ischaemic stroke, n(%)	77 (27.1) ^a	14 (15.1) ^a	3 (20.0) ^a	15 (20.5) ^a
Intracerebral haemorrhage, n(%)	8 (2.8)	0 (0.0)	1 (6.7)	1 (1.4)
Subarachnoid haemorrhage, n(%)	7 (2.5)	0 (0.0)	1 (6.7)	0 (0.0)
CVST, n(%)	0 (0.0)	0 (0.0)	0 (0.0)	0 (0.0)
Coronary artery disease, n(%)	38 (13.4) ^a	11 (11.8) ^b	3 (20) ^c	16 (21.9) ^a
Atrial fibrillation, n(%)	42 (14.8) ^a	4 (4.3)	4 (26.7)	16 (21.9) ^a
Peripheral artery disease, n(%)	28 (9.9) ^a	3 (3.2) ^a	0 (0.0)	8 (11.0)
Other history				
Malignancy, n(%)	48 (16.9) ^a	14 (15.1) ^a	3 (20.0)	17 (23.3)
NIHSS				
Mean (SD)	3.9 (4.4)	8.7 (5.5)	12.3 (5.4)	8.9 (5.7)
Median (range)	2 (0-23)	8 (0-23)	11 (3-25)	8 (0-22)
TOAST classification				
Large artery atherosclerosis, n(%)	73 (25.7) ^b	28 (30.1) ^a	5 (33.3) ^a	17 (23.3) ^a
Cardio-embolic stroke, n(%)	38 (13.4) ^b	14 (15.1) ^a	6 (40.0) ^a	21 (28.8) ^a
Small vessel disease, n(%)	58 (20.4) ^b	12 (12.9) ^a	0 (0.0) ^a	13 (17.8) ^a
Other determined cause, n(%)	25 (8.8) ^b	16 (17.2) ^a	1 (6.7) ^a	5 (6.8) ^a
Undetermined cause, n(%)	80 (28.2) ^b	22 (23.7) ^a	3 (20.0) ^a	17 (23.3) ^a
Mean DTNT, min (SD)	32.4 (13.6)	30.9 (17.4)	29.0 (3.6)	52.1 (31.3)
mRS				
Pre-stroke, median (range)	0 (0-4)	0 (0-4)	3 (0-5)	1 (0-5)
Discharge, median (range)	2 (0-5)	3 (2-5)	5 (3-5)	4 (2-5)
3 months, median (range)	2 (0-6)	3 (1-6)	5.5 (2-6)	4 (1-6)
Admitted days, mean (SD)	6.5 (4.9)	12.6 (8.8)	19.9 (14.5)	13.8 (7.4)
Number of healthcare activities during admission				
Laboratory, mean (SD)	4.6 (4.5)	9.3 (12.1)	21.3 (20.4)	11.0 (11.1)
Radiology, mean (SD)	1.8 (1.0)	2.3 (1.2)	1.7 (0.6)	2.0 (1.1)
Cardiology, mean (SD)	1.7 (1.2)	1.9 (1.4)	2.1 (1.6)	2.4 (1.9)
Other consultations, mean (SD)	1.5 (1.5)	2.2 (1.5)	2.8 (2.0)	2.0 (1.4)
Paramedics, mean (SD)	3.7 (7.0)	16.3 (13.3)	21.5 (19.3)	14.4 (9.5)
IVT, n(%)	31 (10.9)	15 (16.1)	3 (20.0)	14 (19.2)
IAT, n(%)	5 (1.8)	4 (3.3)	0 (0.0)	1 (1.4)
Carotid endarterectomy, n(%)	20 (4.9)	4 (2.2)	0 (0.0)	2 (2.8)

**Number of healthcare activities
after hospital discharge**

Laboratory, mean (SD)	2.3 (5.8)	1.4 (2.8)	4.2 (13.9)	1.0 (2.3)
Radiology, mean (SD)	0.4 (0.9)	0.3 (0.5)	0.1 (0.5)	0.1 (0.3)
Cardiology, mean (SD)	1.2 (2.2)	0.5 (1.2)	0.6 (1.1)	0.3 (0.5)
Other consultations, mean (SD)	0.3 (0.8)	0.1 (0.3)	0.2 (0.5)	0.1 (0.4)
Paramedics, mean (SD)	2.8 (7.5)	0.7 (2.1)	4.5 (15.1)	0.6 (2.0)
Visit outpatient clinic, mean (SD)	1.9 (1.9)	0.7 (1.1)	0.4 (0.8)	0.5 (1.1)
Visit NP outpatient, mean (SD)	0.2 (0.4)	0.0 (0.1)	0.0 (0.0)	0.0 (0.0)
Phone consult, mean (SD)	0.5 (0.9)	0.2 (0.7)	0.3 (0.6)	0.2 (0.9)
Phone consult NP, mean (SD)	0.3 (0.6)	0.1 (0.4)	0.1 (0.3)	0.1 (0.3)
ED visit, n(%)	44.0 (15.5)	11.0 (11.8)	2.0 (13.3)	8.0 (11.0)

^a = <2% missings; ^b = 2-5% missings; ^c = 5-10% missings; ^d = 10-20% missings; CABG = coronary artery bypass graft; CVST = cerebral venous sinus thrombosis; DTNT = door-to-needle-time; HIR = high intensity rehabilitation; IAT = intra-arterial thrombectomy; IVT = intravenous thrombolysis; LIR = low intensity rehabilitation; min = minutes; mRS = modified Rankin Scale; n = number; NIHSS = National Institute of Health Stroke Scale; NP = nurse practitioner; SD = standard deviation; TIA = transient ischemic attack; TOAST = Trial of Org 10172 in Acute Stroke Treatment; y = year

Table S6. Patient characteristics and healthcare activities per modified Rankin scale subgroup at discharge

	mRS 0-2 n = 265	mRS >2 n = 288
Mean age, y (SD)	62.8 (14.1)	67.3 (14.9)
Women, n (%)	107 (40.4)	119 (41.3)
Smoking		
Yes, n(%)	68 (25.7) ^a	71 (24.7) ^a
Former, n(%)	103 (38.9) ^a	124 (43.1) ^a
Drugs		
Yes, n(%)	6 (2.3)	3 (1.0)
Former, n(%)	5 (1.9)	3 (1.0)
Cardiovascular history		
Hypertension, n(%)	139 (52.5) ^a	165 (57.3) ^a
Hyperlipidemia, n(%)	101 (38.3) ^a	123 (42.7) ^a
Diabetes, n(%)	35 (13.2) ^a	49 (17.0) ^a
Ischaemic stroke (including TIA), n(%)	64 (24.2) ^a	71 (24.7) ^a
Intracerebral haemorrhage, n(%)	4 (1.5)	9 (3.1)
Subarachnoid haemorrhage, n(%)	5 (1.9)	5 (1.7)
Cerebral venous sinus thrombosis, n(%)	0 (0.0)	0 (0.0)
Coronary artery disease, n(%)	33 (12.5) ^a	46 (16) ^a
Atrial fibrillation, n(%)	26 (11.3) ^a	43 (16.0) ^a
Peripheral artery disease, n(%)	25 (9.4) ^a	17 (5.9) ^a
Other history		
Malignancy, n(%)	40 (15.1) ^b	54 (18.8) ^a
NIHSS		
Mean (SD)	3.7 (4.1)	8.7 (6.0)
Median (range)	2 (0-23)	8 (0-25)
TOAST classification		
Large artery atherosclerosis, n(%)	66 (24.9) ^b	80 (27.8) ^b
Cardio-embolic stroke, n(%)	32 (12.1) ^b	69 (24.0) ^b
Small vessel disease, n(%)	61 (23.0) ^b	31 (10.8) ^b
Other determined cause, n(%)	22 (8.3) ^b	34 (11.8) ^b
Undetermined cause, n(%)	73 (27.5) ^b	68 (23.6) ^b
Mean door-to-needle time, min (SD)	34.7 (16.7)	38.2 (24.0)
mRS		
Pre-stroke, median (range)	0 (0-3)	1 (0-5)
Discharge, median (range)	2 (0-2)	4 (3-6)
3 months, median (range)	2 (0-6)	3 (1-6)
Admitted days, mean (SD)	5.8 (3.4)	12.8 (9.3)
Number of healthcare activities during hospital admission		
Laboratory, mean (SD)	3.9 (3.2)	11.5 (13.6)
Radiology, mean (SD)	1.8 (1.0)	2.0 (1.2)
Cardiology, mean (SD)	1.6 (1.1)	2.2 (2.0)
Consultation of other specialists, mean (SD)	1.3 (1.2)	2.1 (1.7)
Consultation of paramedics, mean (SD)	2.7 (4.4)	13.6 (13.1)
IVT, n(%)	31 (11.7)	40 (13.9)
IAT, n(%)	6 (1.9)	17 (5.5)
Carotid endarterectomy, n(%)	19 (4.9)	9 (2.0)

Number of healthcare activities after hospital discharge

Laboratory, mean (SD)	1.7 (4.0)	1.9 (6.3)
Radiology, mean (SD)	0.5 (0.9)	0.2 (0.5)
Cardiology, mean (SD)	1.1 (2.1)	0.5 (1.4)
Consultation of other specialists, mean (SD)	0.2 (0.6)	0.2 (0.7)
Consultation of paramedics, mean (SD)	2.3 (6.2)	1.6 (7.2)
Visit outpatient clinic, mean (SD)	1.7 (1.8)	0.8 (1.4)
Visit nurse practitioner outpatient clinic, mean (SD)	0.2 (0.4)	0.0 (0.2)
Phone consult outpatient clinic, mean (SD)	0.4 (0.8)	0.3 (0.9)
Phone consult nurse practitioner, mean (SD)	0.3 (0.6)	0.1 (0.3)
ED visit, n(%)	31 (12.5)	35 (12.2)

^a = <2% missings; ^b = 2-5% missings; ^c = 5-10% missings; ^d = 10-20% missings; CABG = coronary artery bypass graft; ED = emergency department; IAT = intra-arterial thrombectomy; IVT = intravenous thrombolysis; min = minutes; mRS = modified Rankin Scale; n = number; NIHSS = National Institute of Health Stroke Scale; SD = standard deviation; TIA = transient ischemic attack; TOAST = Trial of Org 10172 in Acute Stroke Treatment; y = year

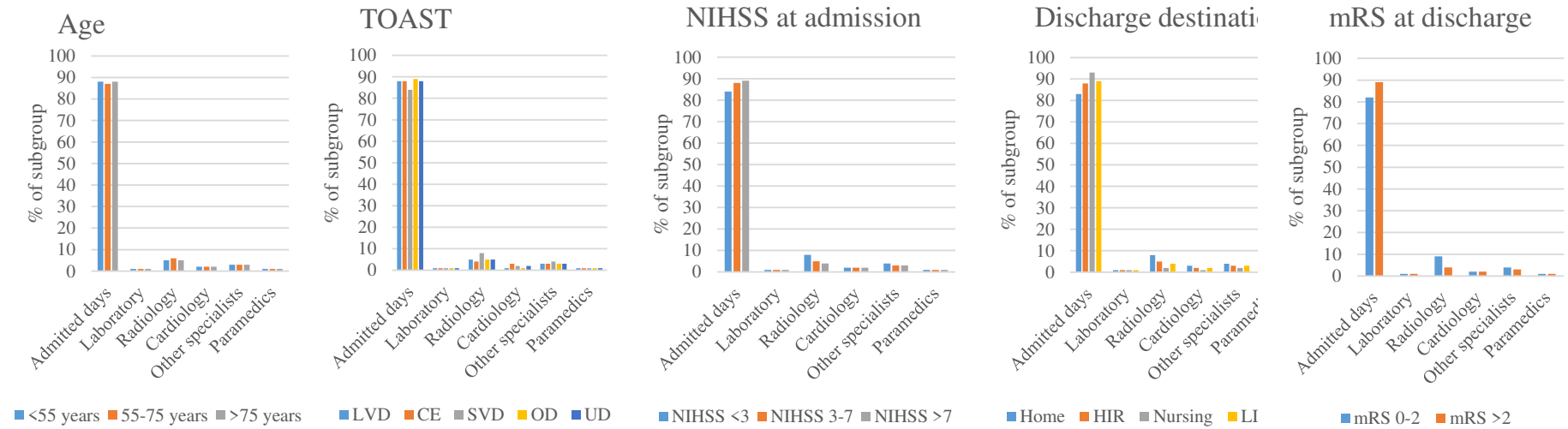
Figure S1. Relative mean costs during hospital admission per patient subgroup (with total costs per subgroup set at 100)

Figure S2. Relative mean costs during first three months after discharge per patient subgroup (with total costs per subgroup set at 100)

