

Supplementary material: Supplementary data

Title: Trends in the shape of the income-mortality association in Sweden between 1995 and 2017: a repeated cross-sectional population register study

Content

Supplementary table 1-2

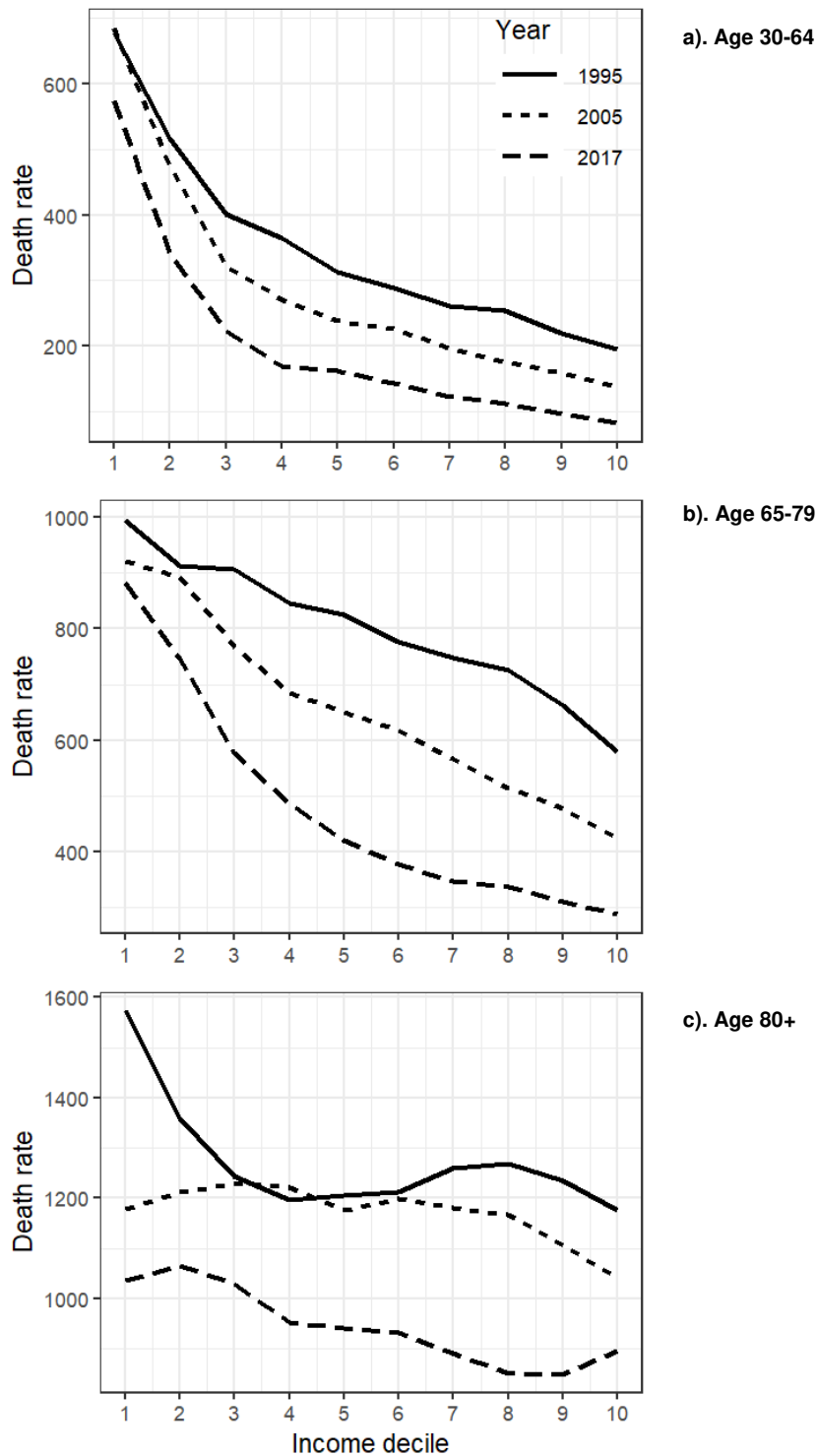
Supplementary figure 1-4

Supplementary table 1. ICD codes for the categorisation of preventable mortality.

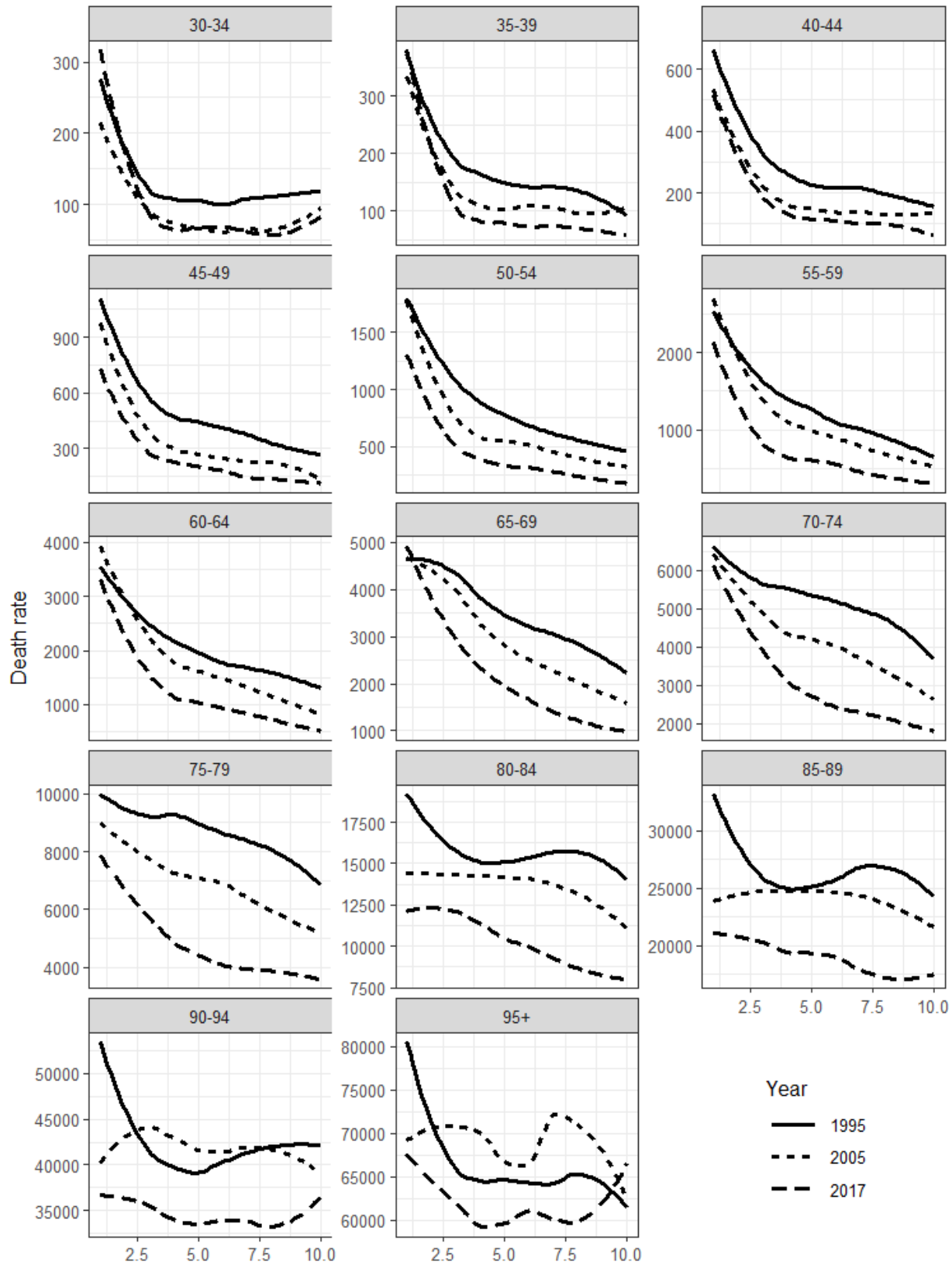
Cause of death	ICD-9	Behavioural change	Amendable to		Total preventable
			Medical intervention	Injury prevention	
Cancer of stomach	151	No	No	No	No
Cancer of colorectum	153–154	No	No	No	No
Cancer of liver	155	No	No	No	No
Cancer of pancreas	157	No	No	No	No
Cancer of kidney and bladder	188–189	No	No	No	No
Other liver and gall bladder diseases	570, 571.4–573, 577.2–577.9	No	No	No	No
Cancer of buccal cavity, pharynx, and oesophagus	140–150	Yes	No	No	Yes
Cancer larynx	161	Yes	No	No	Yes
Cancer of trachea, bronchus and lung	162	Yes	No	No	Yes
Cancer of breast	174–175	No	Yes	No	Yes
Cancer of cervix	180	Yes	Yes	No	Yes
Cancer of prostate	185	No	Yes	No	Yes
Hodgkin's disease and leukaemia	201, 204–208	No	Yes	No	Yes
Diabetes mellitus	205	Yes	No	No	Yes
Hypertensive disease	401–405	Yes	Yes	No	Yes
Ischemic heart disease	410–414	Yes	Yes	No	Yes
Cerebrovascular disease	430–438	Yes	Yes	No	Yes
Pneumonia / influenza	480–487	No	Yes	No	Yes
Chronic Obstructive Pulmonary Disease	490–492, 494, 496	Yes	No	No	Yes
Appendicitis, hernia and peptic ulcer	531–534, 540–543, 550–553, 560	No	Yes	No	Yes
Alcohol abuse	291, 303, 305.0, 425.5, 571.0–571.3, 577.0–577.1, E860	Yes	No	No	Yes
Road traffic accidents	E800–E829	No	No	Yes	Yes
Accidental falls	E880–E888	No	No	Yes	Yes
Suicide	E950–E959	No	No	Yes	Yes

Supplementary table 2. Age standardised death rates per income decile

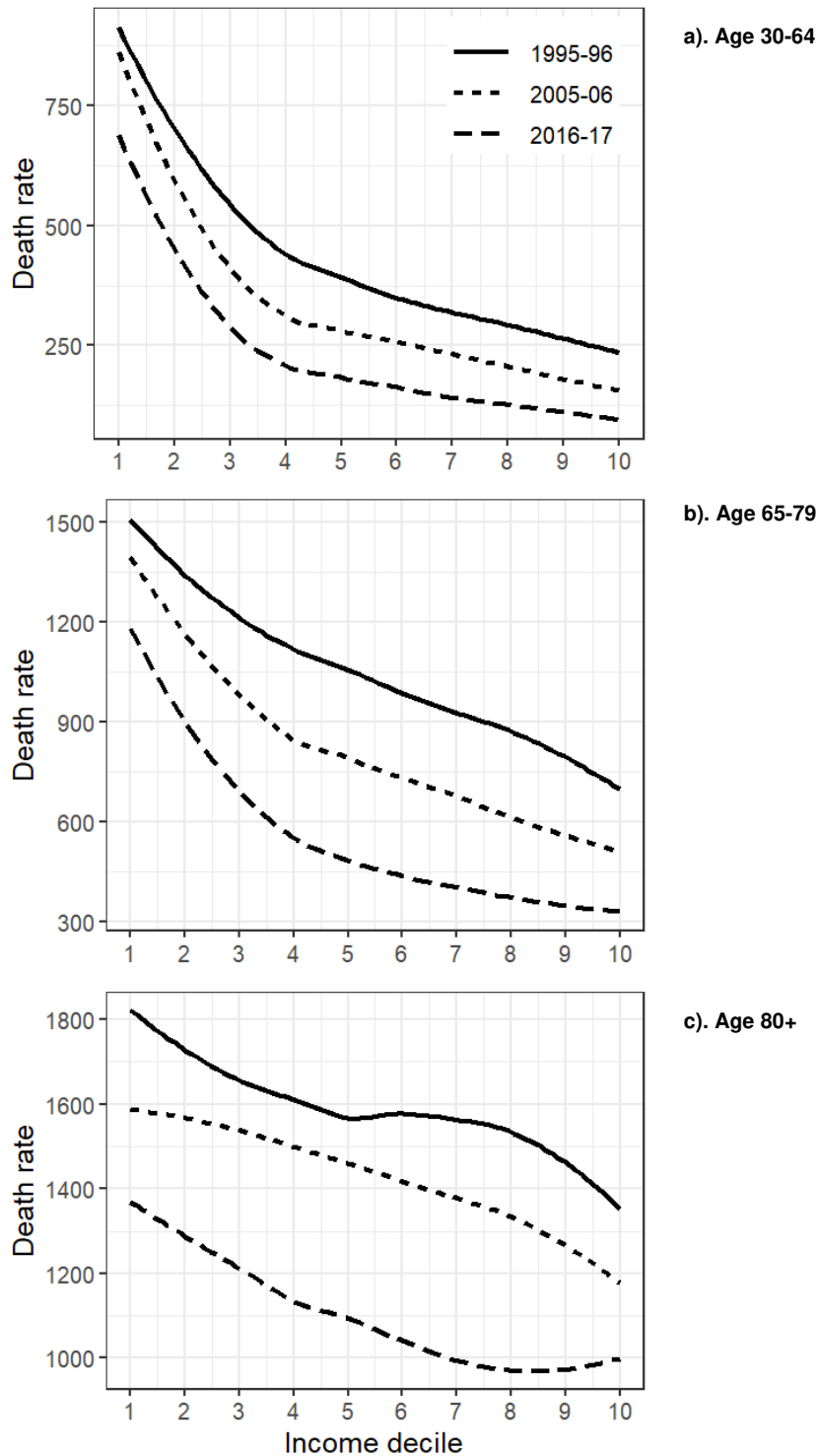
Year	Decile	2-year age standardised death rate		
		Age 30-64	Age 65-79	Age 80+
1995-1996	1	676	995	1574
1995-1996	2	516	912	1358
1995-1996	3	401	906	1243
1995-1996	4	364	847	1196
1995-1996	5	313	825	1204
1995-1996	6	289	777	1211
1995-1996	7	261	748	1260
1995-1996	8	255	726	1270
1995-1996	9	219	663	1234
1995-1996	10	196	578	1176
2005-2006	1	684	921	1177
2005-2006	2	474	893	1213
2005-2006	3	321	768	1228
2005-2006	4	271	685	1222
2005-2006	5	238	650	1175
2005-2006	6	226	618	1199
2005-2006	7	198	567	1180
2005-2006	8	175	513	1166
2005-2006	9	158	476	1106
2005-2006	10	139	425	1041
2016-2017	1	574	883	1035
2016-2017	2	342	747	1064
2016-2017	3	223	576	1028
2016-2017	4	169	485	953
2016-2017	5	163	421	942
2016-2017	6	143	377	931
2016-2017	7	123	346	892
2016-2017	8	112	337	850
2016-2017	9	97	309	848
2016-2017	10	83	287	894



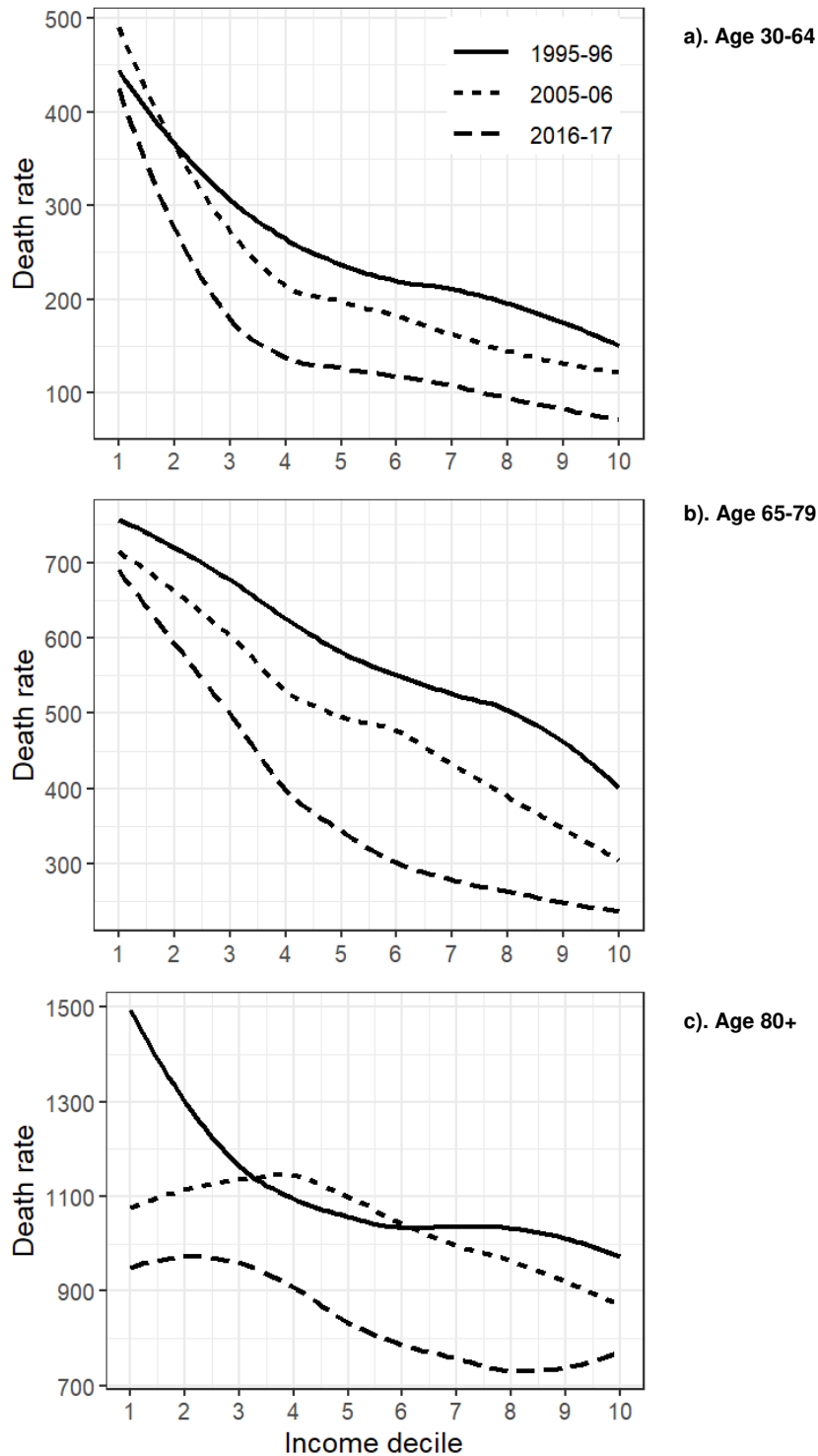
Supplementary figure 1. Non-smoothed age standardised death rate by income decile in 1995–1996, 2005–2006, and 2016–2017 for three age groups



Supplementary figure 2. Crude death rate by 5-year age groups and income decile in 1995–1996, 2005–2006, and 2016–2017. Note that the x-axis varies.



Supplementary figure 3. Age standardised death rate by income decile in 1995–1996, 2005–2006, and 2016–2017 for persons aged a 30–64, b 65–79, c 80+. **Men only.**



Supplementary figure 4. Age standardised death rate by income decile in 1995–1996, 2005–2006, and 2016–2017 for persons aged a 30–64, b 65–79, c 80+. **Women only.**