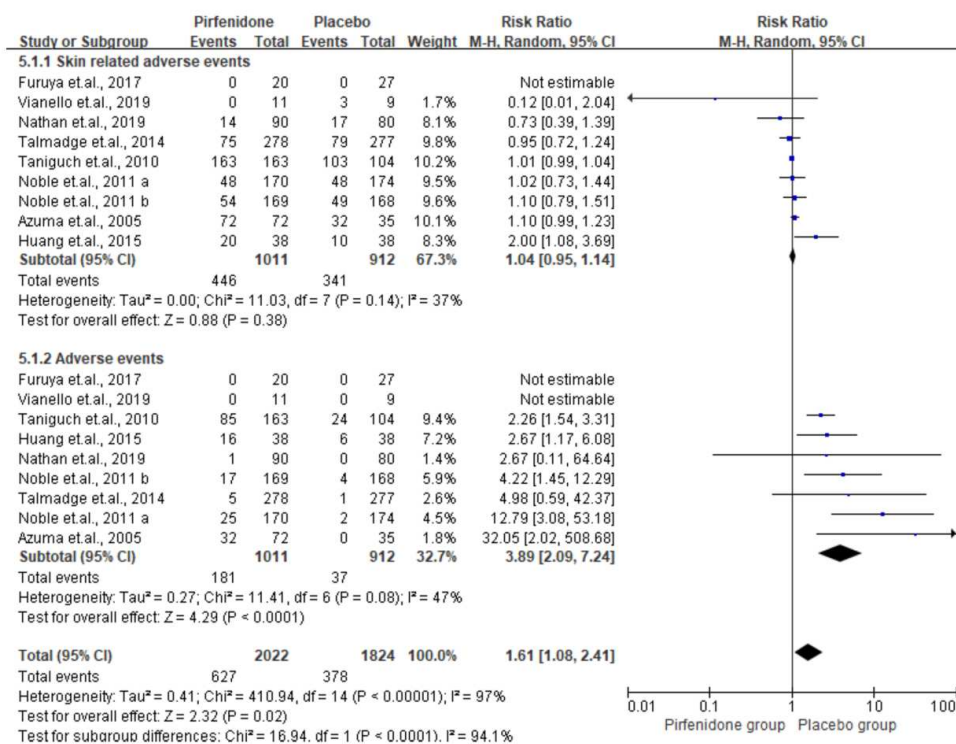


Supplementary Figure 1. Flowchart of the study selection.



Supplementary Figure 2. Quality assessment of included studies.



Supplementary Figure 3. Summarized adverse events.

Supplementary Table 1. Jadad score for included studies

Study included	Randomization ^a	Blinding ^b	An account of all patients ^c	Overall
Azuma et al., 2005	2	2	1	5
Taniguchi et al., 2010	2	2	1	5
Noble et al., 2011	2	2	1	5
Noble et al., 2011	2	2	1	5
Talmadge et al., 2014	2	2	1	5
Huang et al., 2015	2	1	1	4
Furuya et al., 2017	2	1	1	4
Nathan et al., 2019	2	2	1	5
Vianello et al., 2019	2	1	1	4

^a, 1 point if randomization is mentioned, 1 additional point if the method of randomization is appropriate. Deduct 1 point if the method of randomization is inappropriate (minimum 0).

^b, 1 point if blinding is mentioned, 1 additional point if the method of blinding is appropriate. Deduct 1 point if the method of blinding is inappropriate (minimum 0).

^c, The fate of all patients in the trial is known. If there are no data, the reason is stated.

Supplementary Table 2. Publication bias of summarized outcomes

Outcomes	Begg (<i>P</i>-value)	Egger (<i>P</i>-value)
Summarized all-cause mortality	0.54	0.24
Summarized IPF-related mortality	0.78	0.75
Summarized PFS	0.80	0.72
Summarized worsening IPF	0.71	0.50
Summarized acute exacerbation IPF	0.64	0.47
Summarized changes in >10% of FVC	0.50	0.40
Summarized changes in 6MWT	0.44	0.31
Summarized changes in aminotransferase secondary to treatment	0.91	0.94
Summarized adverse events	0.40	0.39
Summarized skin-related adverse events	0.71	0.60