

Online Supplemental Tables and Figures:

eTable 1. Summary of the operationalization and descriptive statistics for each deficit for all participants of the CLSA (n=51,338) and by cohort

eFigure 1: Least-squared mean frailty index by annual household income, stratified by sex

eFigure 2: Least-squared mean frailty index by annual household income, stratified by age and sex

eTable 1. Summary of the operationalization and descriptive statistics for each deficit for all participants of the CLSA (n=51,338) and by cohort

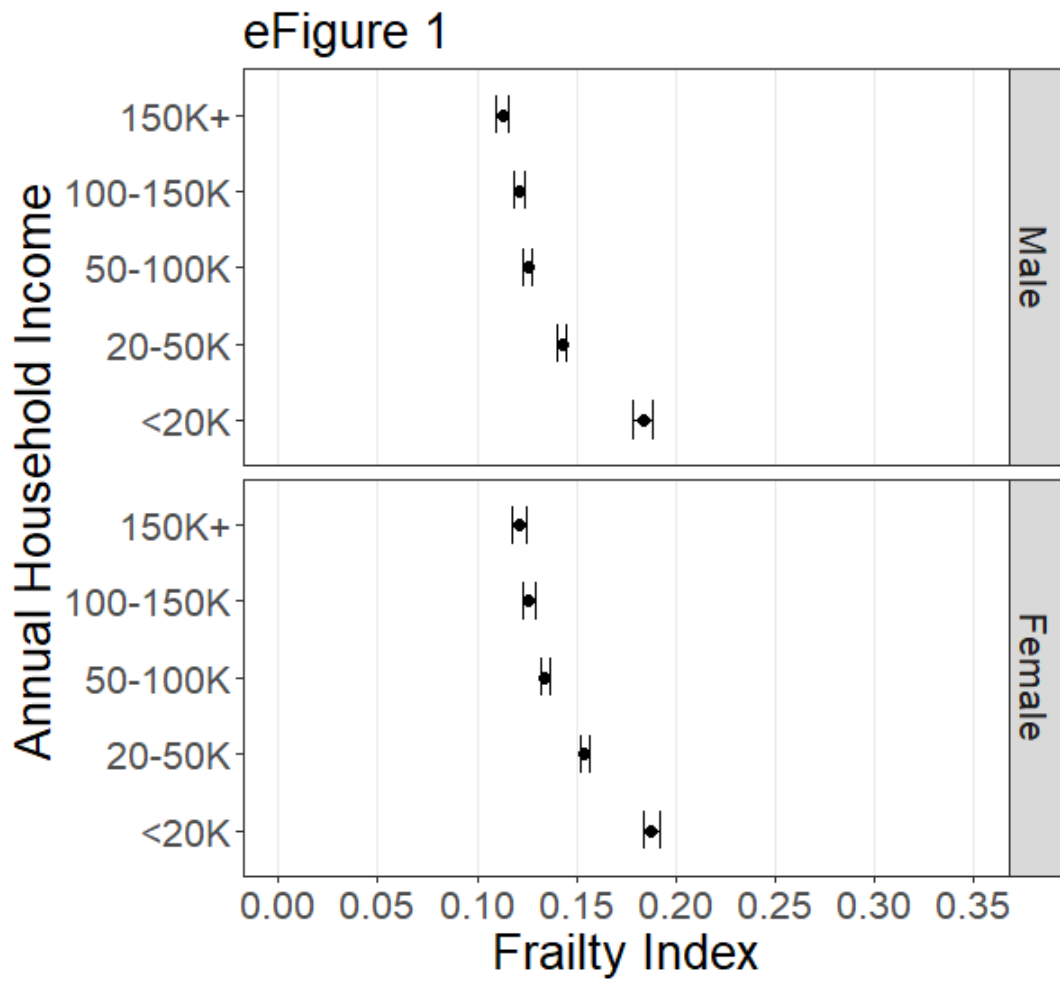
Deficit, Mean (Std Dev)	Tracking (N=21,241)	Comprehensive (N=30,097)	All Participants (N=51,338)
Self-rated general health	0.35 (0.25)	0.32 (0.23)	0.34 (0.24)
Self-rated mental health	0.27 (0.22)	0.27 (0.22)	0.27 (0.22)
Self-rated eyesight	0.33 (0.24)	0.31 (0.23)	0.32 (0.23)
Self-rated hearing	0.34 (0.25)	0.34 (0.25)	0.34 (0.25)
SWLS scale: Satisfied with life	0.17 (0.25)	0.19 (0.24)	0.18 (0.24)
SWLS scale: Life close to ideal	0.24 (0.28)	0.26 (0.28)	0.25 (0.28)
SWLS scale: Life conditions excellent	0.24 (0.29)	0.25 (0.28)	0.24 (0.28)
SWLS scale: Have important things in life	0.16 (0.23)	0.16 (0.22)	0.16 (0.22)
SWLS scale: Would change almost nothing about life	0.32 (0.34)	0.36 (0.34)	0.34 (0.34)
CES-D 10 scale: Frequency feel fearful or tearful	0.12 (0.23)	0.12 (0.23)	0.12 (0.23)
CES-D 10 scale: Frequency feel happy	0.16 (0.25)	0.16 (0.24)	0.16 (0.24)
CES-D 10 scale: Frequency feel could not get going	0.16 (0.27)	0.16 (0.25)	0.16 (0.26)
CES-D 10 scale: Frequency trouble concentrating	0.21 (0.3)	0.21 (0.28)	0.21 (0.29)
CES-D 10 scale: Frequency feel depressed	0.11 (0.23)	0.1 (0.21)	0.1 (0.22)
CES-D 10 scale: Frequency feel everything is an effort	0.18 (0.29)	0.16 (0.26)	0.17 (0.27)
CES-D 10 scale: Frequency sleep is restless	0.37 (0.36)	0.38 (0.35)	0.38 (0.36)
CES-D 10 scale: Frequency easily bothered	0.19 (0.28)	0.16 (0.26)	0.17 (0.27)
CES-D 10 scale: Frequency feel hopeful about the future	0.21 (0.31)	0.18 (0.28)	0.19 (0.29)
CES-D 10 scale: Frequency feel lonely	0.12 (0.26)	0.13 (0.24)	0.13 (0.25)
Mental Alternation Test	0.16 (0.3)	0.16 (0.29)	0.16 (0.29)
RAVLT First recall	0.17 (0.27)	0.17 (0.29)	0.17 (0.28)
RAVLT Delayed recall	0.17 (0.27)	0.17 (0.29)	0.17 (0.29)
Animal Fluency Test	0.18 (0.29)	0.17 (0.29)	0.18 (0.29)
OARS scale: Able to take care of appearance	0 (0.05)	0 (0.04)	0 (0.05)
OARS scale: Able to get out of bed	0.01 (0.09)	0 (0.07)	0.01 (0.08)
OARS scale: Able to take bath	0.01 (0.12)	0.01 (0.1)	0.01 (0.11)
OARS scale: Able to dress	0.01 (0.1)	0 (0.07)	0.01 (0.09)
OARS scale: Able to feed	0 (0.04)	0 (0.03)	0 (0.03)
OARS scale: Able to walk	0.02 (0.13)	0.02 (0.14)	0.02 (0.14)
OARS scale: Trouble to get to bathroom in time	0.04 (0.2)	0.05 (0.21)	0.04 (0.21)
OARS scale: Able to go shopping	0.02 (0.15)	0.01 (0.12)	0.02 (0.13)
OARS scale: Able to take medicine	0 (0.06)	0 (0.06)	0 (0.06)
OARS scale: Able to prepare meals	0.01 (0.1)	0.01 (0.09)	0.01 (0.09)
OARS scale: Able to handle money	0 (0.07)	0 (0.06)	0 (0.07)

Deficit, Mean (Std Dev)	Tracking (N=21,241)	Comprehensive (N=30,097)	All Participants (N=51,338)
OARS scale: Able to use telephone	0 (0.07)	0 (0.04)	0 (0.05)
OARS scale: Able to travel	0.01 (0.11)	0.01 (0.09)	0.01 (0.1)
OARS scale: Able to do housework	0.06 (0.24)	0.05 (0.21)	0.05 (0.22)
Limited social participation due to health status	0.07 (0.25)	0.08 (0.27)	0.08 (0.26)
BMI classification	0.33 (0.31)	0.37 (0.32)	0.35 (0.32)
Chair rise time		0.24 (0.42)	0.24 (0.42)
Grip strength		0.26 (0.44)	0.26 (0.44)
4 metre walk time		0.21 (0.41)	0.21 (0.41)
Timed-Up-and-Go time		0.21 (0.41)	0.21 (0.41)
Standing balance time		0.24 (0.43)	0.24 (0.43)
Difficulty taking force or impact in arms, hands or shoulders	0.13 (0.34)		0.13 (0.34)
Difficulty walking up and down stairs	0.12 (0.32)		0.12 (0.32)
Difficulty handling small objects	0.07 (0.26)		0.07 (0.26)
Difficulty using a knife	0.02 (0.15)		0.02 (0.15)
Difficulty lifting 10 pounds	0.08 (0.27)		0.08 (0.27)
Difficulty making bed	0.05 (0.22)		0.05 (0.22)
Difficulty pulling/pushing large objects	0.11 (0.31)		0.11 (0.31)
Difficulty extending arms above shoulders	0.12 (0.32)		0.12 (0.32)
Difficulty sitting for a long period	0.11 (0.31)		0.11 (0.31)
Difficulty standing for a long period	0.15 (0.36)		0.15 (0.36)
Difficulty standing up after sitting	0.22 (0.41)		0.22 (0.41)
Difficulty stooping, crouching or kneeling	0.31 (0.46)		0.31 (0.46)
Difficulty walking 2 to 3 blocks	0.11 (0.31)		0.11 (0.31)
Difficulty washing back	0.09 (0.29)		0.09 (0.29)
Asthma	0.11 (0.31)	0.13 (0.34)	0.12 (0.33)
Stroke or cerebrovascular accident	0.02 (0.13)	0.02 (0.13)	0.02 (0.13)
Memory problem	0.02 (0.14)	0.02 (0.13)	0.02 (0.14)
Bowel disorder	0.09 (0.28)	0.1 (0.3)	0.09 (0.29)
Glaucoma	0.05 (0.21)	0.05 (0.22)	0.05 (0.22)
Allergies	0.37 (0.48)	0.39 (0.49)	0.38 (0.49)
Osteoporosis	0.09 (0.29)	0.09 (0.29)	0.09 (0.29)
High blood pressure or hypertension	0.38 (0.49)	0.37 (0.48)	0.38 (0.48)
Diabetes, borderline diabetes or high blood sugar	0.17 (0.37)	0.18 (0.38)	0.17 (0.38)
Heart attack or myocardial infarction	0.06 (0.24)	0.05 (0.22)	0.05 (0.23)
Mini-stroke or transient ischemic attack	0.04 (0.19)	0.03 (0.18)	0.03 (0.18)
Parkinsonism or Parkinson's Disease	0 (0.06)	0 (0.06)	0 (0.06)
Cataracts	0.25 (0.43)	0.29 (0.46)	0.27 (0.45)
Back problems excluding fibromyalgia and arthritis	0.25 (0.43)	0.28 (0.45)	0.27 (0.44)

Deficit, Mean (Std Dev)	Tracking (N=21,241)	Comprehensive (N=30,097)	All Participants (N=51,338)
Heart disease including congestive heart failure	0.1 (0.3)	0.12 (0.32)	0.11 (0.32)
Migraine headaches	0.14 (0.34)	0.13 (0.33)	0.13 (0.34)
Intestinal or stomach ulcers	0.08 (0.27)	0.08 (0.26)	0.08 (0.27)
Over-active thyroid gland	0.02 (0.15)	0.02 (0.15)	0.02 (0.15)
Emphysema, chronic bronchitis, or chronic obstructive pulmonary disease	0.07 (0.25)	0.06 (0.23)	0.06 (0.24)
Angina or chest pain due to heart disease	0.05 (0.23)	0.04 (0.21)	0.05 (0.22)
Peripheral vascular disease or poor circulation	0.07 (0.26)	0.06 (0.23)	0.06 (0.24)
Dementia or Alzheimer's disease	0 (0.04)	0 (0.05)	0 (0.05)
Epilepsy	0.01 (0.09)	0.01 (0.1)	0.01 (0.1)
Urinary incontinence	0.09 (0.28)	0.08 (0.28)	0.09 (0.28)
Macular degeneration	0.04 (0.2)	0.04 (0.2)	0.04 (0.2)
Under-active thyroid gland	0.12 (0.32)	0.13 (0.34)	0.13 (0.33)
Kidney disease or kidney failure	0.03 (0.16)	0.03 (0.17)	0.03 (0.17)
Bowel incontinence	0.02 (0.15)	0.02 (0.14)	0.02 (0.14)
Cancer (any)	0.15 (0.36)	0.15 (0.36)	0.15 (0.36)
Mood disorder	0.15 (0.35)	0.17 (0.38)	0.16 (0.37)
Anxiety disorder	0.07 (0.26)	0.09 (0.28)	0.08 (0.27)
Arthritis (any type)	0.39 (0.49)	0.29 (0.45)	0.33 (0.47)

CLSA=Canadian Longitudinal Study on Aging; CESD-10=Center for Epidemiologic Studies Depression Scale-10; OARS=Older Americans' Resources and Services; RAVLT=Ray Auditory Verbal Learning Test; SWLS=Satisfaction with Life Scale

eFigure 1: Least-squared mean frailty index by annual household income, stratified by sex



eFigure 2: Least-squared mean frailty index by annual household income, stratified by age and sex

