

Supplementary Material for:

**Gender disparity between authors in leading medical journals during the
COVID-19 pandemic: A cross-sectional review**

Vaidehi Misra, *research assistant*,¹ Frozan Safi, *medical student*,² Kathryn Brewerton, *medical student*,² Wei Wu, *analyst*,¹ Robin Mason (ORCID: 0000-0003-3143-6811), *scientist*,^{1,3,4} An-Wen Chan, *senior scientist*,^{1,5,6,7} Paula A. Rochon (ORCID: 000-0002-5973-4151), *senior scientist*,^{1,5,6,7} Iliana C. Lega* (ORCID: 0000-0003-4816-2589), *scientist*,^{1,5,6} Husam Abdel-Qadir* (ORCID: 0000-0002-7105-7931), *scientist*^{1,5,6,7}

¹Women's College Research Institute, Women's College Hospital, 76 Grenville Street, Toronto, ON, Canada, M5G 1N8

²Faculty of Medicine, University of Toronto, 1 King's College Circle, Toronto, ON, Canada, M5S 1A8

³Dalla Lana School of Public Health, University of Toronto, 155 College Street, Toronto, ON, Canada, M5T 3M7

⁴Department of Psychiatry, University of Toronto, 250 College Street, Toronto, ON, Canada, M5T 1R8

⁵Department of Medicine, University of Toronto, 190 Elizabeth Street, Toronto, ON, Canada, M5G 2C4

⁶ICES, 2075 Bayview Avenue, Toronto, ON, Canada, M4N 3M5

⁷Institute of Health Policy, Management, and Evaluation (IHPME), University of Toronto, 155 College Street, Toronto, ON, Canada, M5T 3M6

* Both authors contributed equally to this project.

Corresponding Author:
Dr. Husam Abdel-Qadir
Women's College Hospital
76 Grenville Street
Toronto, ON M5S 1B2
E-mail: h.abdel.qadir@utoronto.ca
Phone: 416-710-5200

sTable 1: Articles types included and excluded from study by Journal.

Journal	Article Types Included	Article Types Excluded
NEJM	Original Research; Special Article; Brief Report; Clinical Problem Solving; Clinical Practice Review; Other Review; Editorial; Clinical Implications of Basic Research; Special Report	Perspective; Letter to the Editor; Images in Clinical Medicine; Videos in Clinical Medicine; Health Law, Ethics, and Human; Rights or Health Policy Report; Medicine and Society; Sounding Board
Lancet	Editorials; Comments; Article; Health Policy; Personal View/Viewpoint; Reviews; Seminar; Series; Therapeutics	Correspondence; World Reports and News; Perspectives; Clinical Picture; Commissions; Hypothesis
JAMA	Original Investigation; Clinical Trial; Caring for the Critically Ill Patient; Meta-Analysis; Brief Report; Research Letter; Systematic Review; Advances in Diagnosis and Treatment Review; Narrative Review; Special Communication; Diagnostic Test Interpretation; Clinical Evidence Synopsis	Clinical Challenge; Viewpoint; The Arts and Medicine; A Piece of My Mind; Poetry; Letter to the Editor; Letter in Reply
Nature Medicine	Article; Letter; Brief Communication; Analysis; Resource; Review; Commentary; Perspective	Correspondence; Matters Arising News; News and Views
The BMJ	Research; Research Methods and Reporting (RMR); Analysis; Editorials; Clinical Reviews	Education; Endgames and Minerva Pictures (submissions temporarily closed); Rapid Responses; Personal Views; BMJ Opinion; BMJ Careers; Obituaries; Student
Annals of Internal Medicine	Original Research; Reviews: Systematic and Meta-analyses; Rapid Reviews, Living Reviews, and Living Guidelines; Clinical Guidelines; Position Papers; Research and Reporting Methods; Reviews: Narrative; Editorials; Letters: Brief Research Report; Medicine and Public Issues; Special Articles	Academia and the Profession; Ad Libitum; Graphic Narrative/Comic; Essays, reports, or biographic sketches; Ideas and Opinions; In the Balance; Letters: Case Reports; Letters: Correspondence; On Being a Doctor; On Being a Patient; Personae; History of Medicine
JAMA Internal Medicine	Original Investigation; Research Letter; Systematic Review; Advances in Diagnosis and Treatment Review; Narrative Review; Special Communication; Evidence to Practice	Challenges in Clinical ECG; Teachable Moment; Viewpoint; Perspectives; Images from Our Readers; Letter to the Editor; Letter in Reply

sTable 2: Summary of the results of multivariable logistic regression examining the association of study characteristics with the odds that the principal author is a man (excluding articles whose authors were determined by review of non-English websites). USA= United States of America

Parameter	Odds Ratio	95% Confidence Interval	p-value
COVID-19-related article	0.99	0.81-1.21	0.91
Man as senior author	1.46	1.19-1.79	p < 0.001
Original research or systematic review*	1.27	1.04-1.54	0.02
Corresponding author located in USA †	0.81	0.65-1.01	0.07
Corresponding author located in Europe †	1.04	0.77-1.40	0.80

* Relative to articles not reporting primary research

† Relative to insitutions not based in the USA or Europe

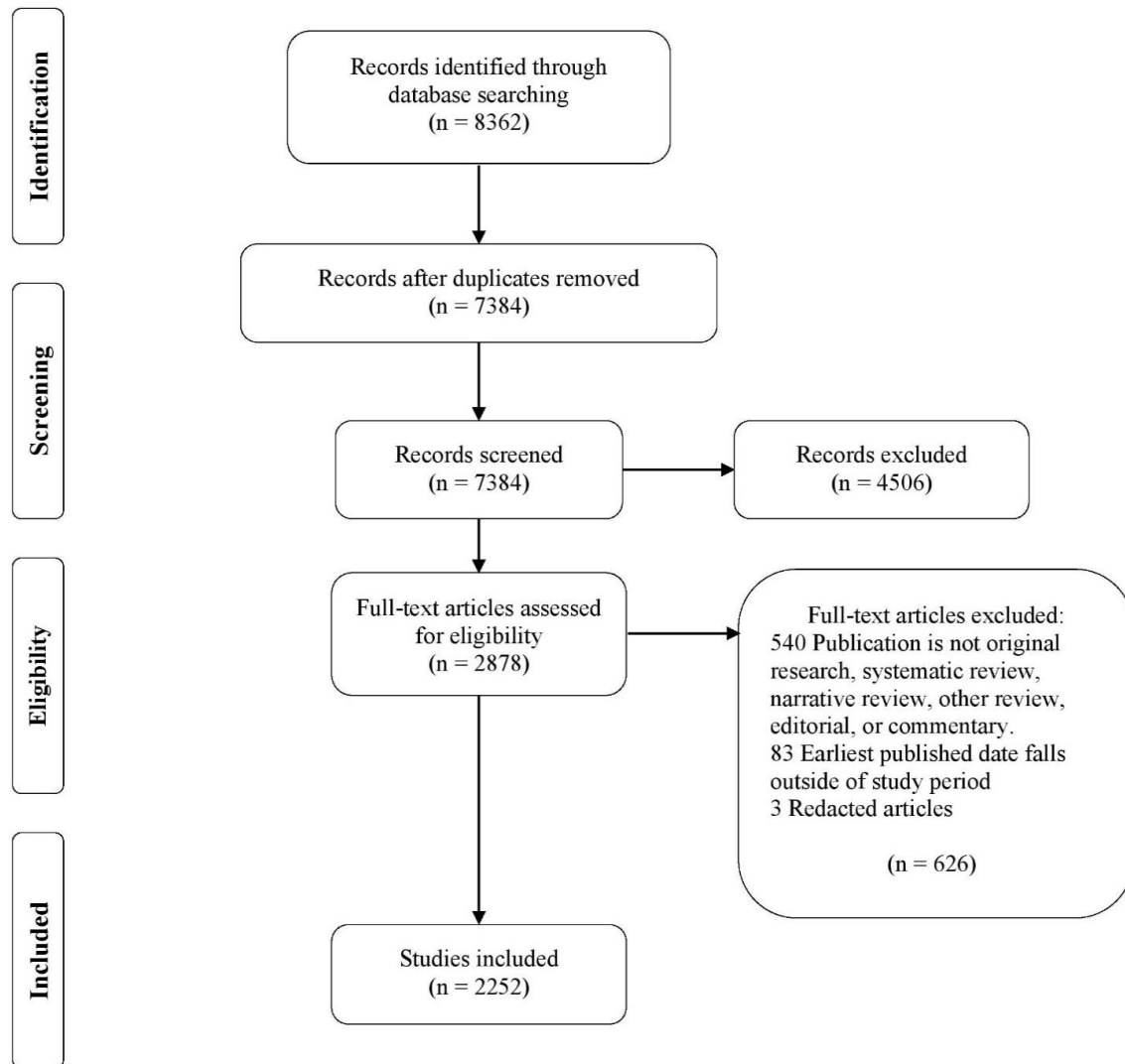
sTable 3: Summary of the results of multivariable logistic regression examining the association of study characteristics with the odds that the senior author is a man (excluding articles whose authors were determined by review of non-English websites). USA= United States of America

Parameter	Odds Ratio	95% Confidence Interval	p-value
COVID-19-related article	0.95	0.76-1.18	0.62
Original research or systematic review*	1.54	1.26-1.89	p < 0.001
Corresponding author located in USA †	0.81	0.64-1.02	0.07
Corresponding author located in Europe †	1.13	0.82-1.56	0.45

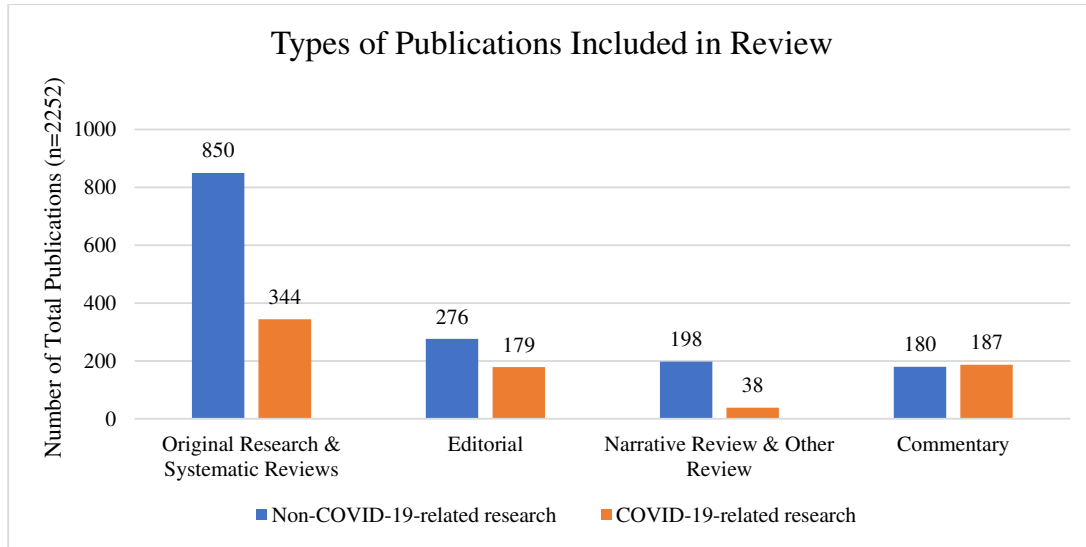
* Relative to articles not reporting primary research

† Relative to institutions not based in the USA or Europe

sFigure 1: PRISMA Flow Diagram depicting the number of records identified, included, and excluded, and the reasons for exclusions.



sFigure 2: Breakdown of the types of publications included in the review, categorized by COVID-19 status.



sFigure 3: Breakdown of the country associated with the institution of the corresponding authors of articles included in the review.

