

## B. ROC curves for laboratory tests used as input to NN.

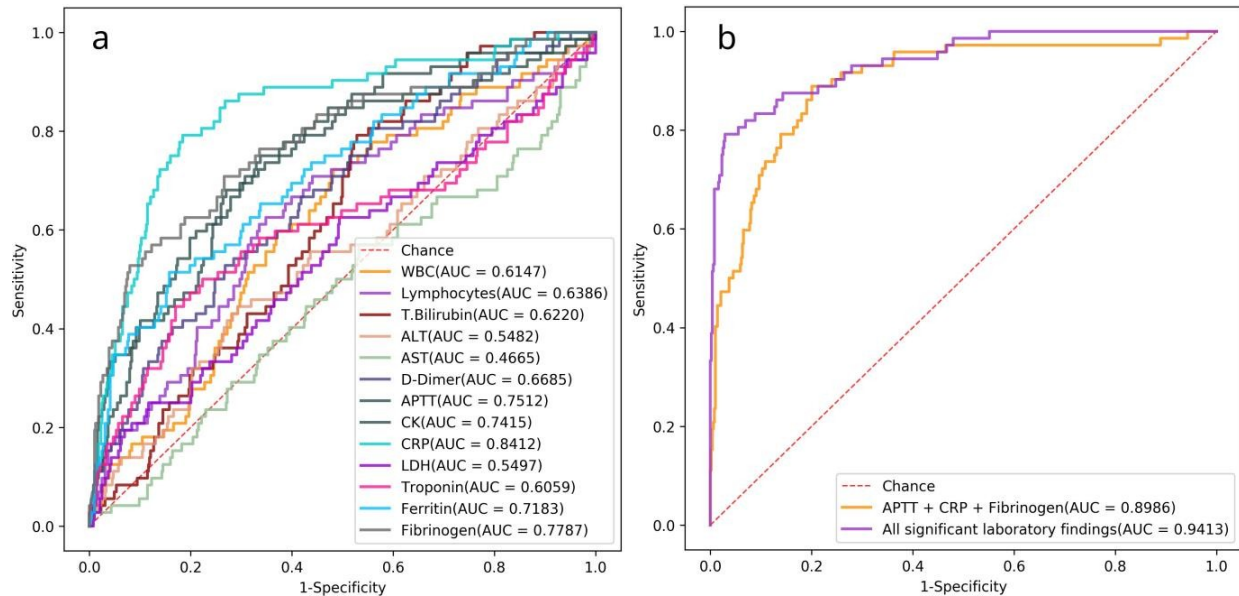


Figure 3: ROC curves for the laboratory tests used as input to NN separately (a) and in the combination (b). The models are trained with 10 folds cross-validation.

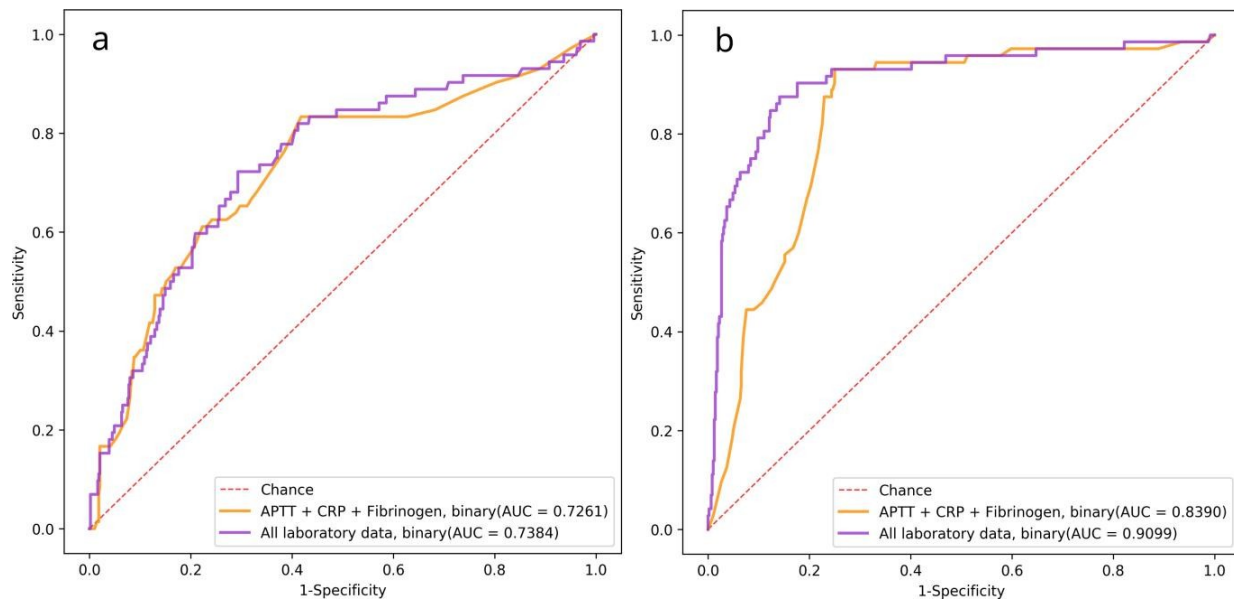


Figure 4: The performance of the 10 folds cross-validation logistic regression model trained on binary data with the threshold moving technique returned by the ML estimator (a), and with the cut-off level set to the 25<sup>th</sup> percentile for lymphocyte count and 75<sup>th</sup> for the other features (b).