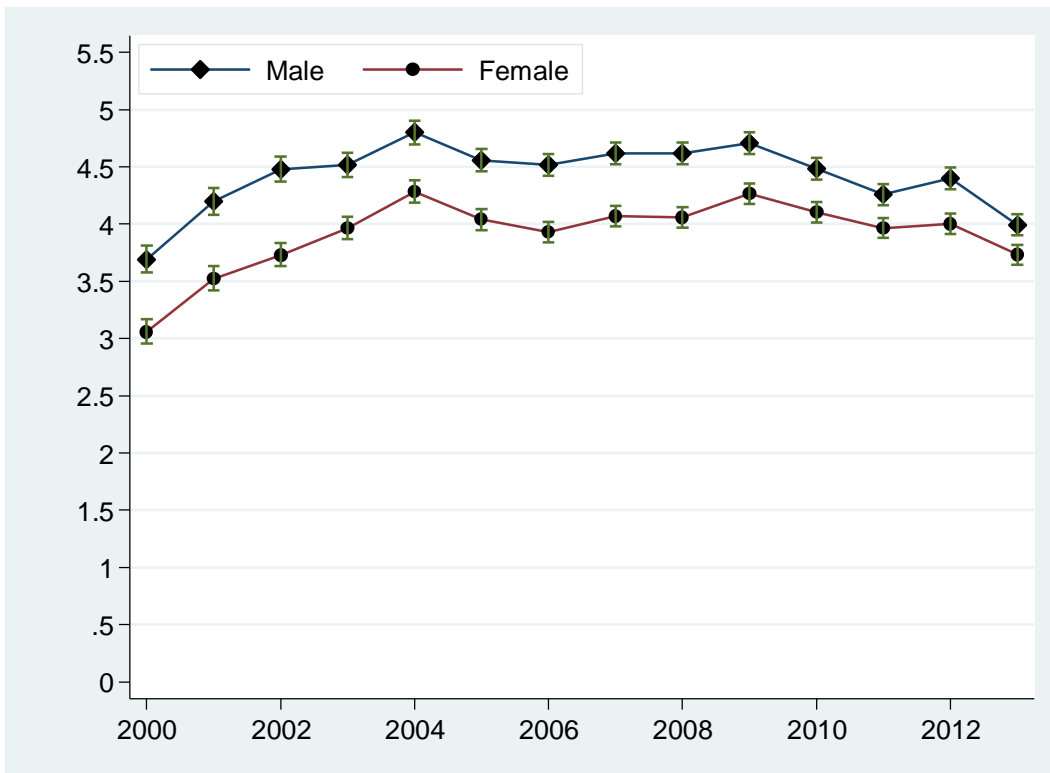


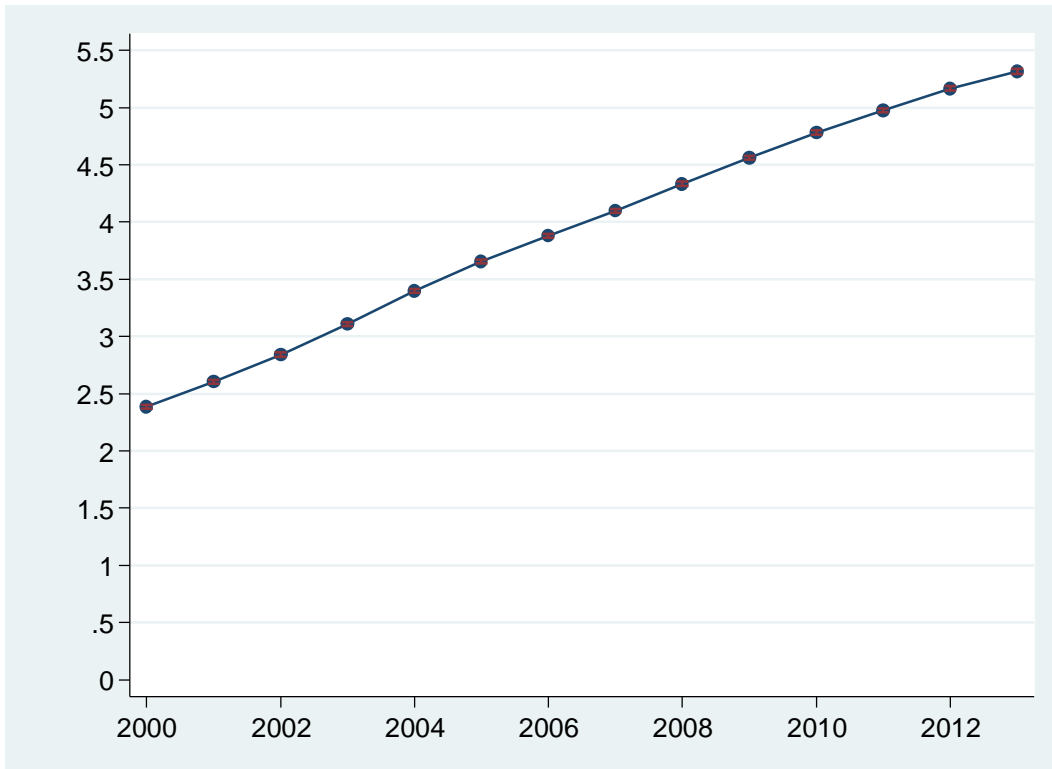
Supplementary Appendices

Appendix 1 – Figure S1 Incidence of Type 2 Diabetes Mellitus	2
Appendix 2 – Figure S2 Percentage prevalence of Type 2 Diabetes Mellitus.....	3
Appendix 3 - Table S1 Prevalence of prescribing of different anti-diabetic classes among all Type 2 diabetics on medication.....	4
Appendix 4 - Table S2 Prevalence of prescribing of different anti-diabetic classes used to initiate treatment in newly diagnosed Type 2 diabetics.....	5
Appendix 5 - Table S3 Prevalence of prescribing of different anti-diabetic classes used as add-on agents in Type 2 Diabetics on metformin.....	6
Appendix 6 - Table S4 Prevalence of prescribing of different anti-diabetic classes used as add-on agents in Type 2 Diabetics on sulphonylureas.....	7

Appendix 1 – Figure S1 Incidence of Type 2 Diabetes Mellitus



Appendix 2 – Figure S2 Percentage prevalence of Type 2 Diabetes Mellitus



Appendix 3 - Table S1 Prevalence of prescribing of different anti-diabetic classes among all Type 2 diabetics on medication

N=Total number of Type 2 diabetics in a calendar year prescribed any anti-diabetic medicines; Metf=metformin; Sulf=sulphonylurea; Ins=Insulins; Glipt=gliptins; Thiazol=thiazolidinediones; GLP-1=glucagon-like-peptide-1 analogues; Megl-meglitinides; Acar=acarbose; SGLT=sodium-glucose co-transporter2 inhibitors

Year	N	Metf%(95%CI)	Sulf%(95%CI)	Ins%(95%CI)	Glipt%(95%CI)	Thiazol%(95%CI)	GLP-1%(95%CI)	Megl%(95%CI)	Acar%(95%CI)	SGLT%(95%CI)
2000	48,501	55.4 (55.0 to 55.8)	64.8 (64.3 to 65.2)	20.4 (20.0 to 20.7)	-	1.2 (1.1 to 1.3)	-	0.9 (0.8 to 1.0)	4.2 (4.0 to 4.4)	-
2001	54,339	59.5 (59.1 to 59.9)	61.2 (60.8 to 61.6)	21.4 (21.0 to 21.7)	-	5.4 (5.2 to 5.6)	-	1.2 (1.1 to 1.3)	3.3 (3.1 to 3.4)	-
2002	60,454	63.9 (63.5 to 64.2)	56.7 (56.3 to 57.1)	21.7 (21.4 to 22.1)	-	7.8 (7.6 to 8.0)	-	1.7 (1.6 to 1.8)	2.7 (2.5 to 2.8)	-
2003	65,828	67.8 (67.4 to 68.1)	53.0 (52.6 to 53.4)	22.6 (22.3 to 22.9)	-	10.6 (10.3 to 10.8)	-	1.6 (1.5 to 1.7)	2.2 (2.1 to 2.3)	-
2004	72,054	71.3 (71.0 to 71.6)	49.5 (49.2 to 49.9)	23.4 (23.1 to 23.7)	-	13.1 (12.8 to 13.3)	-	1.4 (1.3 to 1.5)	1.8 (1.7 to 1.9)	-
2005	77,384	73.4 (73.1 to 73.7)	47.0 (46.6 to 47.3)	23.7 (23.4 to 24.0)	-	14.9 (14.6 to 15.1)	-	1.1 (1.1 to 1.2)	1.5 (1.4 to 1.5)	-
2006	82,186	74.3 (74.0 to 74.6)	45.1 (44.7 to 45.4)	23.7 (23.4 to 23.9)	-	15.9 (15.7 to 16.2)	-	0.9 (0.8 to 1.0)	1.2 (1.1 to 1.3)	-
2007	86,871	75.0 (74.8 to 75.3)	43.9 (43.6 to 44.2)	23.5 (23.2 to 23.8)	0.2 (0.2 to 0.2)	16.0 (15.8 to 16.3)	0.1 (0.1 to 0.2)	0.9 (0.8 to 0.9)	1.0 (0.9 to 1.0)	-
2008	89,903	77.1 (76.9 to 77.4)	43.8 (43.5 to 44.1)	23.5 (23.3 to 23.8)	1.2 (1.1 to 1.2)	14.7 (14.4 to 14.9)	0.8 (0.8 to 0.9)	0.9 (0.8 to 0.9)	0.8 (0.7 to 0.9)	-
2009	93,041	79.0 (78.8 to 79.3)	43.7 (43.4 to 44.1)	23.3 (23.0 to 23.6)	3.6 (3.5 to 3.7)	13.9 (13.7 to 14.1)	2.0 (1.9 to 2.1)	0.8 (0.7 to 0.8)	0.7 (0.6 to 0.7)	-
2010	93,408	81.5 (81.2 to 81.7)	43.4 (43.1 to 43.7)	22.8 (22.6 to 23.1)	7.6 (7.5 to 7.8)	13.6 (13.4 to 13.8)	3.4 (3.3 to 3.5)	0.7 (0.6 to 0.7)	0.6 (0.5 to 0.6)	-
2011	94,025	82.6 (82.3 to 82.8)	42.8 (42.5 to 43.1)	22.8 (22.5 to 23.1)	10.5 (10.3 to 10.7)	11.7 (11.5 to 11.9)	4.3 (4.2 to 4.4)	0.6 (0.5 to 0.6)	0.5 (0.4 to 0.5)	-
2012	93,888	83.1 (82.8 to 83.3)	42.3 (41.9 to 42.6)	23.1 (22.8 to 23.3)	13.4 (13.2 to 13.6)	9.9 (9.7 to 10.1)	5.0 (4.8 to 5.1)	0.5 (0.5 to 0.5)	0.4 (0.4 to 0.5)	-
2013	91,619	83.6 (83.4 to 83.8)	41.4 (41.1 to 41.7)	23.3 (23.0 to 23.6)	15.4 (15.2 to 15.7)	8.5 (8.3 to 8.7)	5.3 (5.2 to 5.5)	0.5 (0.4 to 0.5)	0.4 (0.3 to 0.4)	0.5 (0.5 to 0.6)

Appendix 4 - Table S2 Prevalence of prescribing of different anti-diabetic classes used to initiate treatment in newly diagnosed Type 2 diabetics.

N= Total number of newly diagnosed Type 2 diabetics in a calendar year initiated on anti-diabetic medicines; Metf=metformin; Sulf=sulphonylurea; Ins=Insulins; Glipt=gliptins; Thiazol=thiazolidinediones; GLP-1=glucagon-like-peptide-1 analogues; Megl-meglitinides; Acar=acarbose; SGLT=sodium-glucose co-transporter2 inhibitors

Year	N	Metf%(95%CI)	Sulf%(95%CI)	Ins%(95%CI)	Glipt%(95%CI)	Thiazol%(95%CI)	GLP-1%(95%CI)	Megl%(95%CI)	Acar%(95%CI)	SGLT%(95%CI)
2000	2,574	45.1 (43.2 to 47.1)	51.1 (49.2 to 53.0)	3.1 (2.4 to 3.7)	-	-	-	0.5 (0.3 to 0.8)	0.2 (0 to 0.3)	-
2001	4,385	56.6 (55.1 to 58.0)	40.0 (38.6 to 41.5)	2.8 (2.3 to 3.3)	-	0.1 (0 to 0.2)	-	0.3 (0.1 to 0.4)	0.2 (0.1 to 0.3)	-
2002	5,859	66.3 (65.1 to 67.5)	29.8 (28.6 to 31.0)	2.9 (2.5 to 3.4)	-	0.4 (0.3 to 0.6)	-	0.4 (0.2 to 0.6)	0.1 (0 to 0.2)	-
2003	7,192	74.5 (73.5 to 75.5)	21.6 (20.7 to 22.6)	2.9 (2.5 to 3.3)	-	0.6 (0.4 to 0.8)	-	0.2 (0.1 to 0.3)	0.2 (0.1 to 0.3)	-
2004	8,885	79.5 (78.6 to 80.3)	16.4 (15.6 to 17.1)	2.7 (2.3 to 3.0)	-	1.1 (0.9 to 1.3)	-	0.2 (0.1 to 0.3)	0.2 (0.1 to 0.3)	-
2005	9,416	82.1 (81.3 to 82.9)	14.1 (13.4 to 14.8)	2.4 (2.1 to 2.7)	-	1.1 (0.9 to 1.3)	-	0.1 (0 to 0.2)	0.1 (0.1 to 0.2)	-
2006	9,841	84.4 (83.7 to 85.1)	12.0 (11.4 to 12.7)	2.5 (2.2 to 2.9)	-	0.9 (0.7 to 1.1)	-	0.1 (0 to 0.1)	0.2 (0.1 to 0.2)	-
2007	10,763	86.9 (86.2 to 87.5)	10.2 (9.6 to 10.7)	2.3 (2.0 to 2.6)	-	0.5 (0.4 to 0.6)	-	0.1 (0 to 0.2)	0.1 (0 to 0.1)	-
2008	11,090	87.5 (86.9 to 88.1)	9.7 (9.2 to 10.3)	2.4 (2.1 to 2.6)	-	0.2 (0.1 to 0.3)	-	0.1 (0 to 0.1)	0.1 (0 to 0.1)	-
2009	12,311	89.1 (88.6 to 89.7)	8.7 (8.2 to 9.2)	1.8 (1.5 to 2.0)	0.1 (0.1 to 0.2)	0.1 (0.1 to 0.2)	0.1 (0 to 0.1)	0.1 (0 to 0.1)	-	-
2010	11,938	89.8 (89.3 to 90.4)	7.8 (7.3 to 8.2)	1.9 (1.6 to 2.1)	0.2 (0.1 to 0.3)	0.2 (0.1 to 0.2)	0.1 (0 to 0.1)	-	-	-
2011	11,168	90.2 (89.6 to 90.7)	7.7 (7.2 to 8.2)	1.7 (1.5 to 1.9)	0.3 (0.2 to 0.4)	0.1 (0.0 to 0.1)	0.1 (0 to 0.1)	-	-	-
2012	11,271	90.4 (89.9 to 90.9)	7.4 (6.9 to 7.9)	1.5 (1.2 to 1.7)	0.5 (0.4 to 0.7)	-	0.1 (0 to 0.1)	-	0.1 (0 to 0.1)	-
2013	10,830	91.0 (90.5 to 91.5)	6.3 (5.9 to 6.8)	1.7 (1.4 to 1.9)	0.8 (0.7 to 1.0)	0.1 (0. to 0.1)	-	-	-	-

Appendix 5 - Table S3 Prevalence of prescribing of different anti-diabetic classes used as add-on agents in Type 2 Diabetics on metformin.

N= Total number of newly diagnosed Type 2 diabetics in a calendar year initiated on metformin who were subsequently prescribed add-on therapy; Sulf=sulphonylurea; Ins=Insulins; Glipt=gliptins; Thiazol=thiazolidinediones; GLP-1=glucagon-like-peptide-1 analogues; Megl=meglitinides; Acar=acarbose; SGLT=sodium-glucose co-transporter2 inhibitors

Year	N	Sulf%(95%CI)	Ins%(95%CI)	Glipt%(95%CI)	Thiazol%(95%CI)	GLP-1%(95%CI)	Megl%(95%CI)	Acar%(95%CI)	SGLT%(95%CI)
2000	640	75.9 (72.6 to 79.3)	0.8 (0.1 to 1.5)	1.3 (0.4 to 2.1)	18.8 (15.7 to 21.8)	-	2.2 (1.1 to 3.3)	1.1 (0.3 to 1.9)	-
2001	1,355	68.6 (66.2 to 71.1)	1.4 (0.8 to 2.0)	2.0 (1.2 to 2.7)	24.0 (21.7 to 26.3)	0.2 (0 to 0.5)	3.2 (2.2 to 4.1)	0.6 (0.2 to 1)	-
2002	2,067	66.0 (64.0 to 68.1)	1.3 (0.8 to 1.8)	2.5 (1.8 to 3.1)	26.9 (25.0 to 28.8)	0.3 (0.1 to 0.6)	2.4 (1.8 to 3.1)	0.5 (0.2 to 0.8)	-
2003	2,670	66.7 (64.9 to 68.5)	1.7 (1.2 to 2.2)	3.9 (3.2 to 4.7)	26.5 (24.8 to 28.2)	0.3 (0.1 to 0.6)	0.8 (0.5 to 1.1)	0.1 (0 to 0.2)	-
2004	3,330	67.6 (66.0 to 69.2)	1.9 (1.5 to 2.4)	4.9 (4.1 to 5.6)	24.2 (22.7 to 25.7)	0.5 (0.2 to 0.7)	0.6 (0.3 to 0.8)	0.1 (0 to 0.2)	0.2 (0.1 to 0.4)
2005	3,478	68.1 (66.6 to 69.7)	1.7 (1.3 to 2.2)	7.4 (6.6 to 8.3)	21.6 (20.2 to 23.0)	0.5 (0.3 to 0.8)	0.5 (0.3 to 0.7)	-	0.1 (0 to 0.1)
2006	3,646	68.2 (66.6 to 69.7)	1.8 (1.4 to 2.3)	10.5 (9.5 to 11.5)	18.1 (16.9 to 19.4)	0.8 (0.5 to 1.1)	0.4 (0.2 to 0.6)	0.1 (0 to 0.2)	0 (0 to 0.1)
2007	3,976	72.5 (71.1 to 73.9)	2.3 (1.8 to 2.8)	13.0 (12.0 to 14.1)	10.5 (9.6 to 11.5)	1.0 (0.7 to 1.3)	0.5 (0.2 to 0.7)	0.1 (0 to 0.2)	0.1 (0 to 0.2)
2008	3,955	69.3 (67.8 to 70.7)	2.0 (1.6 to 2.5)	17.2 (16.1 to 18.4)	9.4 (8.5 to 10.3)	1.4 (1.0 to 1.7)	0.4 (0.2 to 0.6)	-	0.2 (0.1 to 0.3)
2009	3,952	66.4 (64.9 to 67.9)	2.4 (1.9 to 2.9)	22.8 (21.5 to 24.2)	6.1 (5.4 to 6.9)	1.5 (1.1 to 1.9)	0.3 (0.1 to 0.4)	0.1 (0 to 0.2)	0.3 (0.2 to 0.5)
2010	3,273	64.1 (62.4 to 65.7)	2.3 (1.8 to 2.8)	25.5 (24.0 to 27.0)	4.9 (4.2 to 5.7)	2.1 (1.6 to 2.6)	0.3 (0.1 to 0.5)	-	0.8 (0.5 to 1.1)
2011	2,652	64.6 (62.7 to 66.4)	3.7 (3.0 to 4.5)	25.6 (23.9 to 27.2)	3.1 (2.4 to 3.7)	1.8 (1.3 to 2.4)	0.2 (0 to 0.4)	-	1.0(0.6 to 1.4)
2012	2,119	63.9 (61.9 to 65.9)	4.1 (3.2 to 4.9)	26.2 (24.3 to 28.1)	2.2 (1.6 to 2.8)	1.8 (1.3 to 2.4)	0.2 (0 to 0.4)	0.1 (0 to 0.2)	1.5 (1.0 to 2.0)
2013	1,440	61.7 (59.2 to 64.2)	3.8 (2.8 to 4.8)	26.9 (24.7 to 29.2)	1.9 (1.2 to 2.7)	1.3 (0.7 to 1.9)	0.1 (0 to 0.3)	0.1 (0 to 0.2)	4.0 (3.0 to 5.0)

Appendix 6 - Table S4 Prevalence of prescribing of different anti-diabetic classes used as add-on agents in Type 2 Diabetics on sulphonylureas.

N= Total number of newly diagnosed Type 2 diabetics in a calendar year initiated on sulphonylureas who were subsequently prescribed add-on therapy; Metf=metformin; Ins=Insulins; Glipt=gliptins; Thiazol=thiazolidinediones; GLP-1=glucagon-like-peptide-1 analogues; Megl-meglitinides; Acar=acarbose; SGLT=sodium-glucose co-transporter2 inhibitors.

Year	N	Metf%(95%CI)	Ins%(95%CI)	Glipt%(95%CI)	Thiazol%(95%CI)	GLP-1%(95%CI)	Megl%(95%CI)	Acar%(95%CI)	SGLT%(95%CI)
2000	747	89.8 (87.7 to 92.0)	3.7 (2.4 to 5.1)	0.4 (0 to 0.9)	5.5 (3.9 to 7.1)	-	0.3 (0 to 0.6)	0.3 (0 to 0.6)	-
2001	940	89.1 (87.2 to 91.1)	5.0 (3.6 to 6.4)	0.6 (0.1 to 1.1)	4.4 (3.1 to 5.7)	-	0.5 (0.1 to 1)	0.3 (0 to 0.7)	-
2002	904	86.5 (84.3 to 88.7)	4.8 (3.4 to 6.1)	0.2 (0 to 0.5)	7.9 (6.1 to 9.6)	-	0.4 (0 to 0.9)	0.2 (0 to 0.5)	-
2003	793	84.4 (81.8 to 86.9)	6.9 (5.2 to 8.7)	0.3 (0 to 0.6)	7.9 (6.1 to 9.8)	-	0.4 (0 to 0.8)	0.1 (0 to 0.4)	-
2004	705	83.5 (80.8 to 86.3)	7.7 (5.7 to 9.6)	0.9 (0.2 to 1.5)	7.7 (5.7 to 9.6)	-	0.1 (0 to 0.4)	0.1 (0 to 0.4)	-
2005	622	84.9 (82.1 to 87.7)	7.1 (5.1 to 9.1)	1.1 (0.3 to 2.0)	6.3 (4.4 to 8.2)	-	0.6 (0 to 1.3)	-	-
2006	521	81.8 (78.4 to 85.1)	10.4 (7.7 to 13.0)	2.3 (1.0 to 3.6)	4.8 (3.0 to 6.6)	-	0.6 (0 to 1.2)	0.2 (0 to 0.6)	-
2007	479	81.2 (77.7 to 84.7)	10.6 (7.9 to 13.4)	2.7 (1.3 to 4.2)	5.0 (3.1 to 7.0)	-	0.4 (0 to 1.0)	-	-
2008	421	84.6 (81.1 to 88.0)	6.9 (4.5 to 9.3)	3.3 (1.6 to 5.0)	4.3 (2.3 to 6.2)	-	0.7 (0 to 1.5)	0.2 (0 to 0.7)	-
2009	405	84.7 (81.2 to 88.2)	9.9 (7.0 to 12.8)	3.2 (1.5 to 4.9)	2.0 (0.6 to 3.3)	-	0.2 (0 to 0.7)	-	-
2010	352	77.8 (73.5 to 82.2)	11.9 (8.5 to 15.3)	8.8 (5.8 to 11.8)	1.4 (0.2 to 2.7)	-	-	-	-
2011	319	82.8 (78.6 to 86.9)	7.2 (4.4 to 10.1)	8.8 (5.7 to 11.9)	0.9 (0 to 2.0)	0.3 (0 to 0.9)	-	-	-
2012	314	81.2 (76.9 to 85.5)	11.5 (7.9 to 15.0)	5.1 (2.7 to 7.5)	2.2 (0.6 to 3.9)	-	-	-	-
2013	239	79.9 (74.8 to 85.0)	13.4 (9.1 to 17.7)	6.3 (3.2 to 9.4)	0.4 (0 to 1.2)	-	-	-	-