

Appendix 1

Frailty Syndrome	ICD-10 Diagnostic Code
Anxiety and Depression	F320 F320- F320-- F320-D F3200 F3200- F3200A F3200D F3201 F3201A F3201D F3207 F320X F321 F321 1 F321- F321-- F321-D F3210 F3210- F3210A F3210D F3211 F3211- F32110 F32111 F3211A F3211D F3219 F322 F322 D F322- F322-D F32211 F3229 F322X F323 F323 D F323- F323-- F323-D F3230 F3231 F3239 F324 F325 F326 F327 F328 F328 A F328- F3289 F328A F329 F329 A F329 D F329- F329-- F329-A F329-D F329. F329/ F3290 F3292 F3293 F3295 F3296 F3298 F3299 F329A F329D F329J2 F329M F329Q F32X F32X- F33#- F330 F330- F330-D F3300 F3300A F3301 F3301A F3301D F331 F331 1 F331- F331-D F3310 F3310- F3310A F3310D F3311 F3311- F3311A F3311D F332 F332- F332-- F332-D F3320 F3329 F333 F333- F333-D F3330 F3331 F3333 F334 F334- F335 F336 F337 F338 F338- F338-D F3380 F339 F339 A F339- F339-- F339-D F3396 F33X F380 F380- F3800 F3800A F3800D F381 F381- F3810 F3810A F3810D F388 F388- F38X F410 F410- F410-- F4100 F4101 F4103 F410D F411 F411- F411-D F412 F412- F412-- F4122 F412D F413 F413- F418 F418- F419 F419- F419-- F4193 F4199 F419X F41X F430 F430- F430-D F4300 F4301 F4302 F431 F431- F431-- F432 F432 0 F432 2 F432 3 F432 5 F432- F432-- F432-D F4320 F4320A F4320D F4320X F4321 F4321- F4321A F4321D F4322 F4322- F4322A F4322D F4323 F4323A F4323D F4324 F4325 F4325- F4325A F4325D F4328 F4328A F4328D F4329 F432X F438 F438- F439 F439- F43X F440 F440- F441 F441- F442 F442- F4422 F443 F443- F444 F444- F445 F445- F446 F446- F447 F447- F448 F448- F4480 F4481 F4481A F4481D F4482 F4488 F449 F449-
Delirium	F050 F050 A F050- F051 F051 A F051 D F051- F051-A F051-D F0513 F051D F058 F058- F058-- F059 F059 D F059- F059--
Dementia	F000 F000 A F000 D F000* F000+ F000- F000-A F000-D F0000 F00001 F00002 F0000A F0001 F00010 F0001A F0002 F0002A F0003 F00031 F00032 F0004 F00040 F00041 F00042 F0004A F0009 F0009A F000a F001 F001 0 F001 1 F001 A F001 D F001* F001+ F001- F001-A F001-D F0010 F00101 F00102 F0010A F0011 F00111 F00112 F0011A F0012 F00122 F0012A F0013 F00130 F00131 F00132 F0014 F00140 F00141 F00142 F0014A F001A F001AG F001D F002 F002 A F002 D F002* F002*A F002+ F002- F002-A F002-D F0020 F0020A F0021 F00211 F0022 F0023 F0023A F0024 F0024A F002A F008 F009 F009 * F009 A F009 D F009* F009+ F009- F009-A F009-D F009.A F0090 F00901 F0090A F0091 F00912 F0091A

		<p>F0092 F0092A F0093 F0093A F0094 F0094A F009A F009A\  F009AGF009D F009DGF009X F009XA F00A-A F00X F00X-  F010 F010* F010- F010-D F0100 F01001 F01002 F0100A  F0100D F0101 F01012 F0101A F0101D F0102 F0102A F0102D  F0103 F0104 F01042 F0104A F0104D F011 F011 A F011 D  F011- F011-- F011-A F011-D F0110 F01100 F01101 F01102  F0110A F0111 F01111 F01112 F0111A F0112 F01120 F01121  F01122 F0113 F01131 F01132 F0114 F01141 F01142 F0114A  F0114D F0117 F0119 F011A F011D F012 F012 A F012 D  F012- F012-D F0120 F0120A F0121 F01211 F01232 F0124  F012A F013 F013 A F013 D F013* F013- F013-D F0130  F01301 F01302 F0130A F0131 F01310 F01312 F0133 F01330  F0134 F01340 F01341 F01342 F018 F018 A F018- F018-A  F0180 F0181 F0182 F0183 F0184 F018D F019 F019 *  F019 A F019 D F019* F019- F019-- F019-A F019-D F0190  F0191 F01910 F0192 F01921 F0192A F0193 F0194 F01941  F01942 F0197 F0199 F019A F019D F019N F019Z8 F01X  F01X- F02. F020 F020 A F020 D F020* F020- F020-A  F020-D F0200 F02001 F0200A F0201 F02012 F0202 F0203  F0203A F0204 F0204A F020A F020D F021 F021 A F021*  F021- F021-A F0210 F0211 F0214 F021A F022 F022 A  F022 D F022* F022- F022-A F0220 F0220A F0222 F0223  F0224 F022A F023 F023 A F023 D F023* F023+ F023-  F023-A F023-D F0230 F02301 F0230A F0231 F0231A F0232  F02320 F02321 F0232A F0233 F02331 F0233A F0234 F02341  F02342 F0234A F023A F023AGF023D F023X F023XA F024  F024 A F024* F024-A F0240 F0241 F02412 F0242A F0243  F0244 F024A F028 F028 ! F028 * F028 A F028 D F028*  F028+ F028- F028-A F028-D F0280 F02801 F0280A F0281  F02811 F0281A F0282 F02821 F0282A F0283 F0284 F0284A  F028A F028D F028XA F029 F02X F03- F030 F0300  F03011 F0304 F03X F03X * F03X A F03X D F03X* F03X+  F03X- F03X-- F03X-A F03X-D F03X0 F03X0* F03X00 F03X01  F03X02 F03X0D F03X1 F03X11 F03X12 F03X2 F03X20 F03X2A  F03X2D F03X3 F03X4 F03X41 F03X42 F03X6 F03X9 F03XD  F03XG F03XI F03XS F03XZ F04X F04X- R410 R410 D  R410- R410-- R4100 R4104 R4109 R410D R410L R410X  R411 R411- R411X R412 R412- R413 R413- R413--  R418 R418 D R418- R418-- R4185</p>
Functional Dependence	<p>Z741 Z741- Z742 Z742- Z7421 Z743 Z743- Z748 Z748-  Z749 Z749- Z74X Z750 Z750- Z7500 Z751 Z751-  Z751-- Z751-D Z7511 Z7513 Z752 Z752- Z7520 Z753  Z753- Z754 Z754- Z7548 Z755 Z755- Z755-D Z7555  Z758 Z758- Z759 Z759- Z75X</p>	
Falls and Fractures	<p>R55X R55X D R55X* R55X+ R55X- R55X-- R55X-D R55X7 R55XA  R55XD R55XX S320 S320 0 S320- S320-D S3200 S3200D  S3201 S3202 S3205 S3206 S3209 S320D S321 S321 0  S321 D S321- S3210 S3210D S3211 S32130 S322 S322-</p>	

	S3220 S3221 S323 S323 0 S323- S3230 S3230D S3231
	S3236 S324 S324 0 S324- S3240 S3240A S3240D S3241
	S324D S325 S325 0 S325 D S325- S325-D S3250 S3250-
	S3250A S3250D S3251 S3252 S3254 S3255 S3256 S3258
	S3259 S327 S327 0 S327- S3270 S3270D S3271 S328
	S328 0 S328- S328-D S3280 S3280D S3281 S3288 S32X
	S330 S330- S331 S331- S331-D S3310 S331D S332
	S332- S3320 S333 S333- S3330 S3331 S333D S334
	S334- S3340 S335 S335- S3350 S336 S336- S337
	S337- S3370 S33X S420 S420 0 S420- S420-A S4200
	S4200D S4201 S4201D S4206 S421 S421 0 S421- S4210
	S4210- S4210D S4211 S4212 S4213 S422 S422 0 S422-
	S4220 S4220- S4220D S4221 S42210 S4222 S4220 S423
	S423 0 S423 D S423- S4230 S4230D S4231 S4231D S4232
	S42340 S4236 S4239 S423D S424 S424 0 S424- S4240
	S4240D S4241 S4241D S4244 S4248 S4249 S427 S427-
	S4270 S4270D S4271 S428 S428- S4280 S4281 S429
	S429 0 S429- S4290 S4290D S4291 S4299 S430 S430 0
	S430- S430-- S4300 S4302 S4309 S430D S431 S431-
	S4310 S4316 S431D S432 S432- S4320 S433 S433-
	S4330 S434 S434- S4340 S4341 S434D S435 S435-
	S436 S436- S436D S437 S437- s620 S620 0 S620-
	S6200 S6200D S6201 S6204 S6208 S621 S621 0 S621-
	S6210 S6211 S6211D S6218 S622 S622 0 S622- S6220
	S6220D S6221 S6221D S6228 S623 S623 0 S623- S623--
	S6230 S6230D S6231 S6231D S6234 S6236 S6239 S624
	S624 0 S624- S6240 S6240D S6241 S6241D S6244 S625
	S626- S627 S627 0 S6271 S6274 S628 S628 0 S628-
	S6280 S6280- S6280D S6281 S6288 S6289 S6280 S629
	S720 S720 0 S720- S720-D S720.0 S7200 S7200- S72000
	S72009 S7200A S7200D S7201 S7201D S7203 S7204 S7205
	S7208 S7209 S720A S720D S721 S721 0 S721- S7210
	S72100 S7210D S7211 S7215 S7219 S721D S7210 S722
	S722 0 S722- S7220 S7220D S7221 S72210 S7221D S7222
	S723 S723 0 S723 1 S723- S7230 S7230D S7231 S7236
	S723D S724 S724 0 S724- S7240 S7240A S7240D S7241
	S7246 S727 S727- S7270 S7271 S728 S728 0 S728-
	S7280 S7280D S7281 S728D S729 S729 0 S729- S7290
	S7290D S7291 S7295 S7299 S729D S72X S730 S730-
	S730-D S7300 S730D S731 S731- S7310 S7315 S731D
	S73X S73X- W000 W000- W0009 W000A W001 W001-
	W0010 W0012 W0019 W002 W002- W002A W003 W003-
	W0033 W003A W004 W004- W0040 W0049 W004A W004D
	W005 W005- W006 W006- W007 W007- W008 W008-
	W0080 W008A W009 W009- W0090 W0099 W009A W010
	W010 AW010 DW010- W010-A W0100 W0101 W0103
	W0104 W0108 W0109 W010A W011 W011- W0111 W0118
	W0119 W011A W012 W012- W012-- W0120 W0122 W0123

	W0128 W0129 W012A W012X W013 W013- W0130 W0131 W0139 W013A W014 W014- W0140 W0141 W0148 W0149 W014A W015 W015- W0150 W0152 W0158 W0159 W015A W016 W016- W0160 W016A W017 W017- W018 W018- W0180 W0181 W0182 W0185 W0188 W0189 W018A W019 W019- W0190 W0191 W0192 W0195 W0198 W0199 W019A W020 W020- W020A W021 W021- W022 W022- W023 W023- W0230 W0239 W023A W024 W024- W024A W025 W025- W026 W026- W027 W028 W028- W0280 W0281 W0282 W028A W029 W029- W0290 W0291 W0293 W0299 W029A W030 W030- W0300 W0301 W0309 W030A W031 W031- W0319 W031A W032 W032- W0320 W0329 W032A W033 W033- W0330 W0331 W0333 W0339 W033A W034 W034- W0349 W035 W035- W036 W036- W037 W037- W038 W038- W0380 W0383 W038A W039 W039- W0390 W0398 W0399 W039A W040 W040- W0409 W040A W041 W041- W0410 W0419 W042 W042- W0429 W043 W043- W044 W044- W045 W045- W046 W0460 W0469 W047 W048 W048- W049 W049- W0491 W0499 W049A W050 W050- W0504 W0509 W050A W051 W051- W0519 W051A W052 W052- W0528 W0529 W052A W053 W053- W054 W054- W0549 W054A W055 W055- W056 W056- W057 W057- W058 W058- W0581 W0589 W058A W059 W059- W0598 W0599 W059A W060 W060- W0600 W0601 W0604 W0608 W0609 W060A W061 W061- W061-A W0611 W0619 W061A W062 W062- W062-- W0624 W0628 W0629 W062A W063 W063- W064 W064- W065 W065- W065A W066 W066- W067 W068 W068- W0689 W069 W069- W0690 W0691 W0692 W0699 W069A W070 W070- W0700 W0701 W0706 W0708 W0709 W070A W071 W071- W0711 W0718 W0719 W071A W072 W072- W0720 W0728 W0729 W072A W073 W073- W074 W074- W075 W075- W0752 W0759 W076 W076- W077 W077- W078 W078- W0782 W079 W079- W0790 W0798 W0799 W079A W080 W080- W0808 W0809 W080A W081 W081- W0810 W0819 W082 W082 AW082- W0829 W082A W083 W083- W0830 W084 W084- W085 W085- W0850 W085A W086 W086- W0860 W087 W087- W088 W088- W0889 W089 W089- W0899 W089A W090 W090 AW090- W0900 W0901 W0909 W090A W091 W091- W092 W092- W0920 W0921 W092A W093 W093- W0939 W093A W094 W094- W095 W095- W0959 W095A W096 W096- W097 W097- W098 W098- W0981 W0988 W0989 W098A W099 W099- W0990 W0991 W0999 W099A W100 W100- W100-A W1000 W1008 W1009 W100A W101 W101- W1011 W1012 W1019 W101A W102 W102- W1029 W102A W103 W103 DW103- W1030 W1039 W103A W104 W104- W1049 W105 W105- W1052 W1058 W1059 W105A W106 W106 DW106- W1062 W107 W107-
--	--

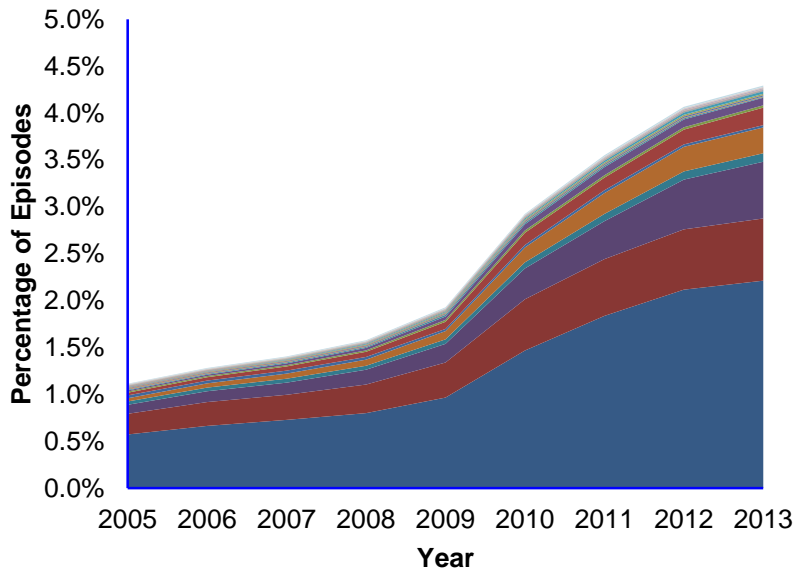
	W108 W108- W1082 W1085 W1089 W108A W109 W109- W1090 W1098 W1099 W109A W109D W110 W110- W1100 W1103 W1109 W110A W111 W111- W1110 W112 W112 D W112- W113 W113 DW113- W113-D W1130 W1139 W114 W114- W115 W115- W116 W116- W116A W117 W117- W118 W118- W1182 W1183 W1188 W119 W119- W1191 W1192 W1193 W1198 W1199 W119A W120 W120- W120A W121 W121- W122 W122- W123 W123- W124 W124- W125 W125- W126 W126- W126A W127 W127- W128 W128- W129 W129- W1292 W1299 W129A W130 W130- W1300 W1304 W1308 W1309 W130A W131 W131- W131A W132 W132- W1329 W133 W133- W1339 W134 W134- W1349 W135 W135- W136 W136- W1360 W137 W137- W138 W138- W1389 W138A W139 W139- W1390 W1392 W1393 W1399 W139A W140 W140- W140A W141 W141- W142 W142- W143 W143- W144 W144- W1449 W145 W145- W146 W146- W147 W147- W148 W148- W1482 W148A W149 W149- W1490 W1499 W149A W150 W150- W151 W151- W152 W152- W153 W153- W1530 W154 W154- W155 W156 W156- W157 W158 W158- W159 W159- W1590 W160 W160- W161 W161- W162 W162- W163 W163- W164 W164- W165 W165- W166 W166- W167 W167- W168 W168- W169 W169- W170 W170- W1700 W1701 W1708 W1709 W170A W171 W171- W172 W172- W1720 W1729 W172A W173 W173- W1730 W1739 W173A W174 W174- W1740 W1749 W174A W175 W175- W1752 W175A W176 W176- W1762 W1769 W176A W177 W177- W178 W178- W1780 W1781 W1782 W1789 W178A W179 W179- W1790 W1791 W1792 W1798 W1799 W179A W180 W180- W180-A W1800 W1801 W1802 W1803 W1804 W1808 W1809 W180A W180E W181 W181- W1810 W1811 W1819 W181A W181D W182 W182- W182-- W1820 W1821 W1822 W1828 W1829 W182A W183 W183- W1830 W1831 W1839 W183A W184 W184- W1840 W1848 W1849 W184A W185 W185- W1851 W1858 W1859 W185A W186 W186- W1869 W187 W187- W1879 W188 W188- W1880 W1881 W1882 W1883 W1888 W1889 W188A W189 W189- W1890 W1891 W1892 W1893 W1894 W1895 W1898 W1899 W189A W190 W190 AW190 DW190- W190-- W190-A W190-D W1900 W1901 W1903 W1905 W1908 W1909 W190A W191 W191- W191-A W1910 W1911 W1918 W1919 W191A W192 W192 DW192+ W192- W192-- W192-A W1921 W1922 W1928 W1929 W192A W193 W193- W1930 W1939 W194 W194* W194- W1940 W1941 W1943 W1948 W1949 W194A W195 W195- W1959 W195A W196 W196- W196A W197 W197- W197A W198 W198- W198-A W1980 W1981 W1982 W1988 W1989 W198A W199 W199 0 W199 DW199- W199-A W199-D W1990 W1991
--	--

	W1992 W1993 W1994 W1995 W1996 W1998 W1999 W199A W199D W19X
Incontinence	R15X R15X A R15X D R15X- R15X-- R15X9 R32X R32X- R32X-- R32X-A R32X-D R32X0 R32X1 R32X3 R32X9 R32XD
Mobility problems	R260 R260- R260D R261 R261- R261D R262 R262 A R262- R2621 R2623 R263 R263- R263D R268 R268- R268-- R2683 R2686 R2689 R268D R269 Z740 Z740 Z Z740- Z740-- Z740-D Z740. Z7400 Z7401 Z7404 Z740C Z740D
Pressure Ulcers	L890 L890- L890-- L890D L891 L891- L891-- L892 L892- L892-- L893 L893- L893-A L899 L899 A L899- L899-- L89X L89X - L89X A L89X D L89X E L89X I L89X J L89X Z L89X- L89X-- L89X-D L89X1 L89X5 L89X9 L89XD
Senility	R54X R54X A R54X D R54X- R54X-D R54X. R54X0 R54X6 R54X7 R54X9 R54XA R54XD R54XI R54XW R54XX

APPENDIX 2:

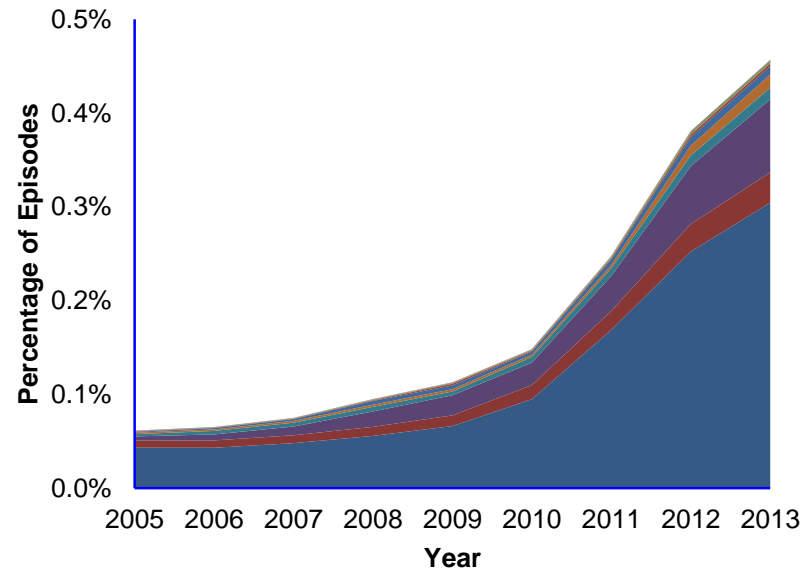
**Anxiety & Depression Coding Prevalence Over Time**

All episodes at acute providers, Jan '05 to Mar '13



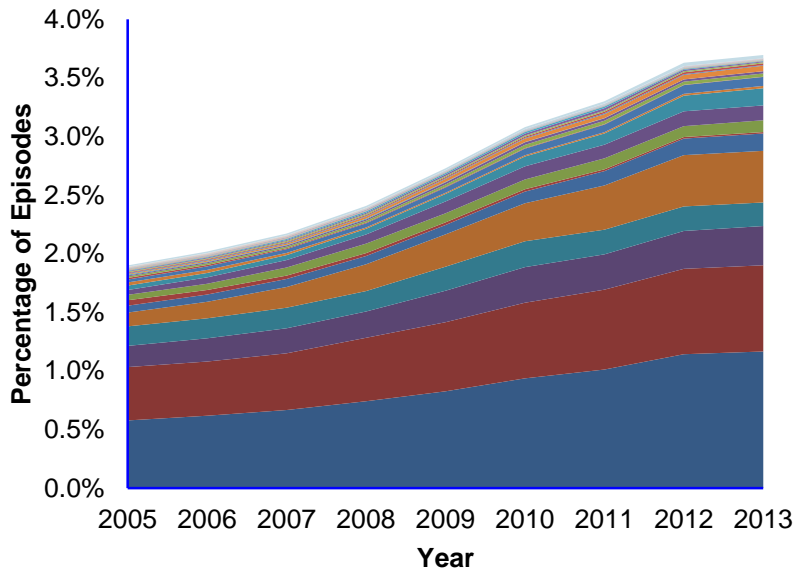
**Delirium Coding Prevalence Over Time**

All episodes at acute providers, Jan '05 to Mar '13

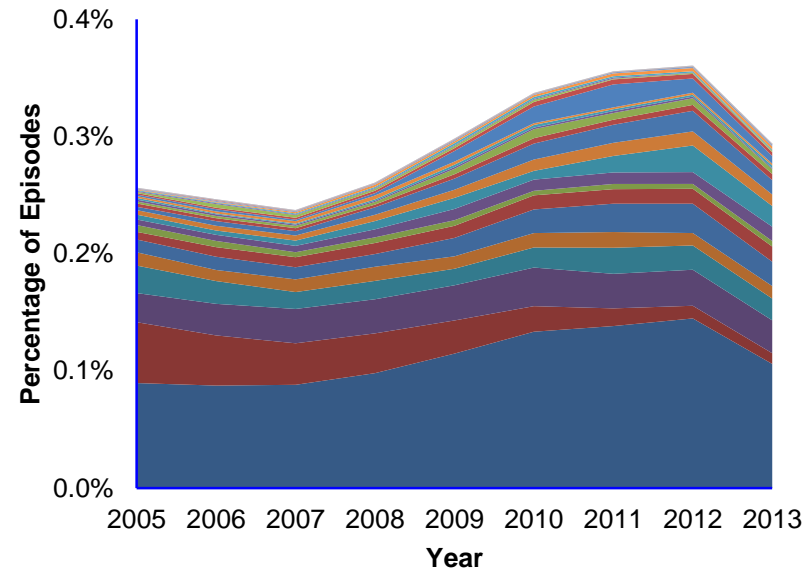


- |         |         |         |         |         |         |         |         |
|---------|---------|---------|---------|---------|---------|---------|---------|
| ■ F329  | ■ F329- | ■ F419  | ■ F410  | ■ F412  | ■ F339  | ■ F419- | ■ F410- |
| ■ F412- | ■ F339- | ■ F411  | ■ F322  | ■ F432  | ■ F323  | ■ F448  | ■ F431  |
| ■ F411- | ■ F445  | ■ F328  | ■ F322- | ■ F323- | ■ F333  | ■ F432- | ■ F320- |
| ■ F320  | ■ F321  | ■ F431- | ■ F430  | ■ F439  | ■ F449  | ■ F418  | ■ F332  |
| ■ F321- | ■ F444  | ■ F332- | ■ F333- | ■ F449- | ■ F448- | ■ F430- | ■ Other |
- 
- |         |          |          |          |          |          |          |
|---------|----------|----------|----------|----------|----------|----------|
| ■ F059  | ■ F051   | ■ F059-  | ■ F050   | ■ F058   | ■ F051-  | ■ F050-  |
| ■ F058- | ■ F051 A | ■ F0513  | ■ F051-D | ■ F051 D | ■ F051-A | ■ F059-- |
| ■ F051D | ■ F050 A | ■ F058-- | ■ F059 D | ■ Other  |          |          |

**Dementia Coding Prevalence Over Time**  
All episodes at acute providers, Jan '05 to Mar '13



**Functional Dependence Coding Prevalence Over Time**  
All episodes at acute providers, Jan '05 to Mar '13



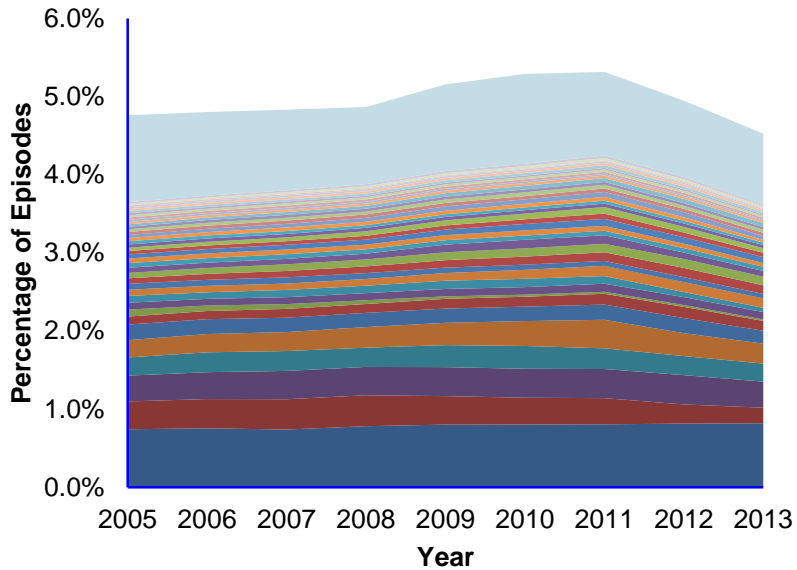
- F03X ■ R410 ■ F03X- ■ R410- ■ F019 ■ R418 ■ F011
- F009 A ■ F019- ■ F009 ■ F009A ■ R413 ■ F011- ■ R418-
- R413- ■ F03X0 ■ F009-A ■ R412 ■ F023 ■ F023 A ■ F028
- F028 A ■ F023A ■ F028A ■ R412- ■ F001 A ■ F0190 ■ F001
- F03X4 ■ F023-A ■ F001A ■ F018 ■ R411 ■ F028-A ■ F0194
- F010 ■ F0110 ■ R411- ■ F002 A ■ Other

- Z751 ■ Z755 ■ Z751- ■ Z755- ■ Z742 ■ Z748 ■ Z749
- Z752 ■ Z753 ■ Z741 ■ Z758 ■ Z754 ■ Z742- ■ Z748-
- Z743 ■ Z749- ■ Z754- ■ Z741- ■ Z750 ■ Z752- ■ Z743-
- Z759 ■ Z758- ■ Z753- ■ Z750- ■ Z759- ■ Z7513 ■ Z7511
- Z7500 ■ Z7520 ■ Z755-D ■ Z751-- ■ Z7421 ■ Other



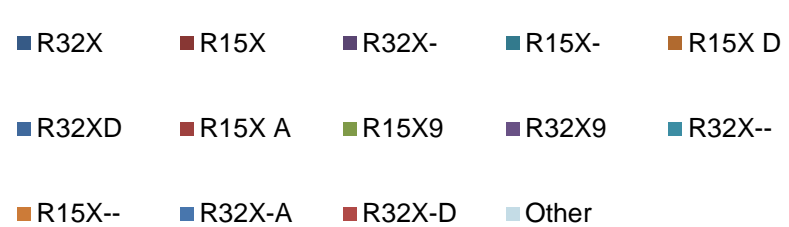
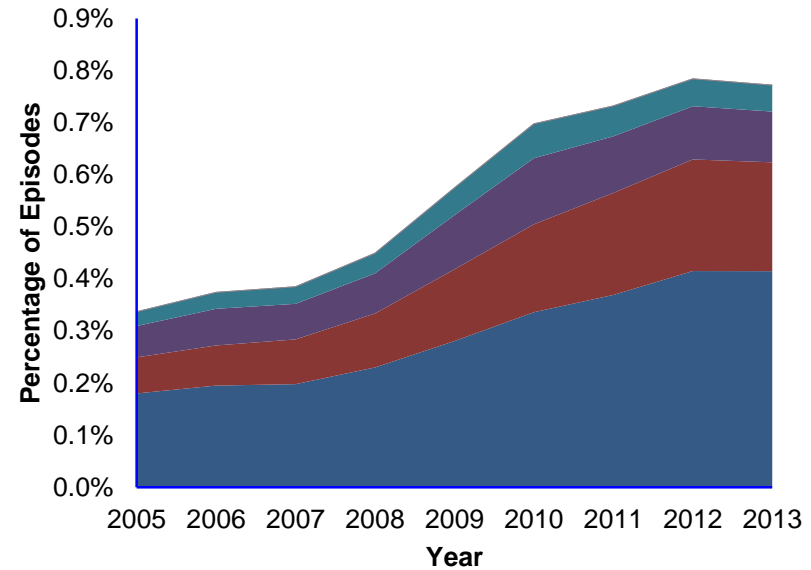
### Falls (& significant fracture) Coding Prevalence Over Time

All episodes at acute providers, Jan '05 to Mar '13

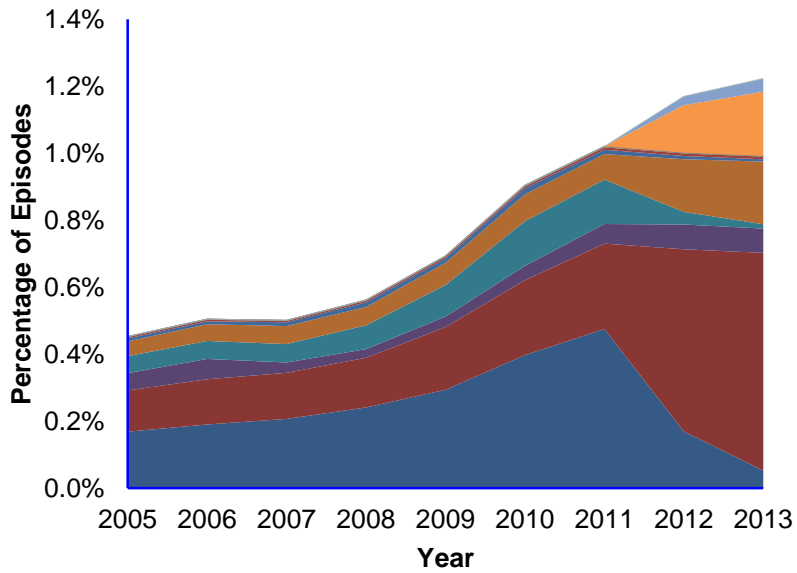


### Incontinence Coding Prevalence Over Time

All episodes at acute providers, Jan '05 to Mar '13

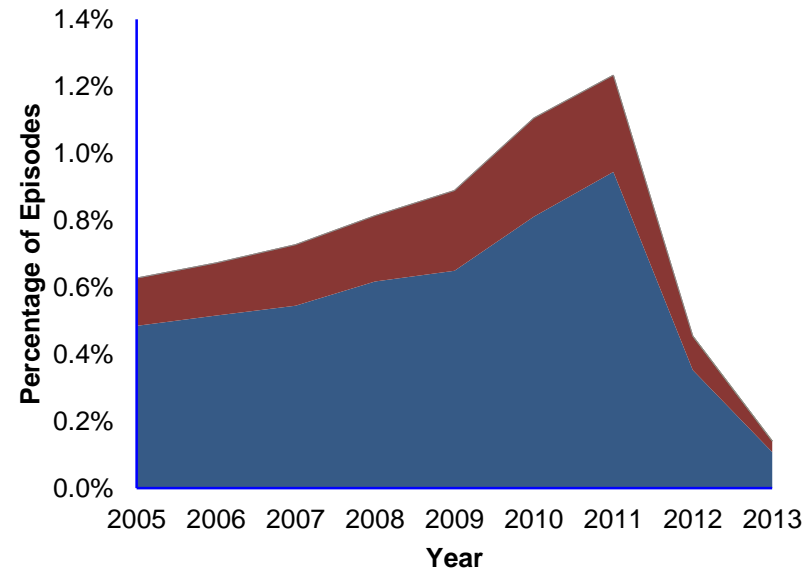


**Mobility Problems Coding Prevalence Over Time**  
All episodes at acute providers, Jan '05 to Mar '13



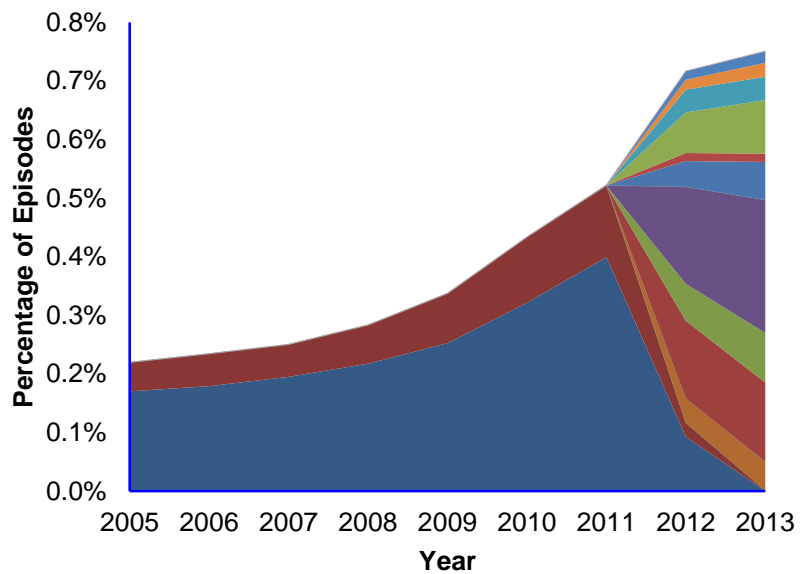
- Z740    R268    R262    Z740-    R268-    R262-
- R260    R260-    R261    R261-    R260D    Z7400
- Z740C    R2686    R261D    R2621    Z740D    R2689
- R2683    R2623    Z7401    Z740 Z    R263    R263-
- Z740--    Z740.    R263D    R268--    R262 A    Other

**Senility Problems Coding Prevalence Over Time**  
All episodes at acute providers, Jan '05 to Mar '13



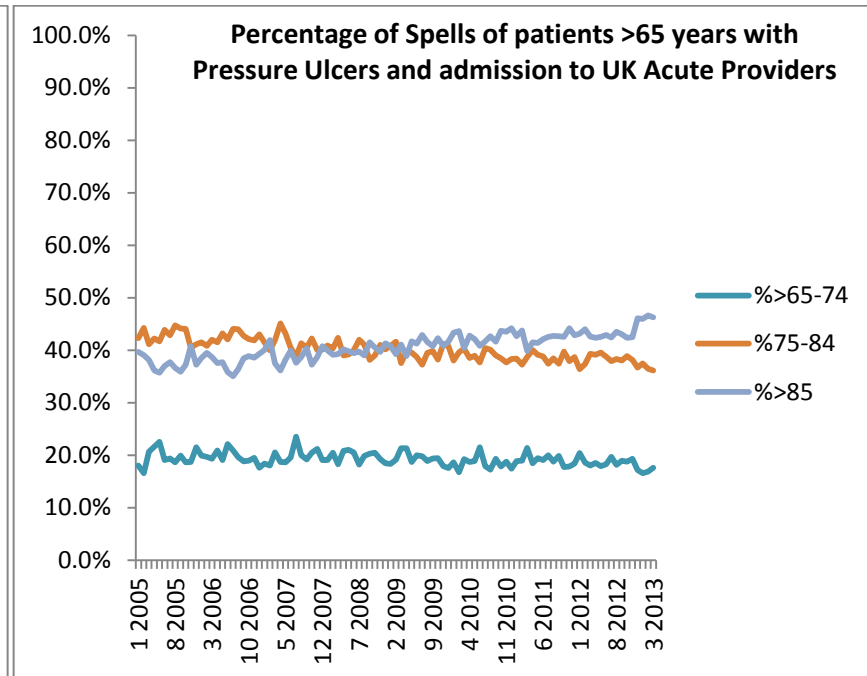
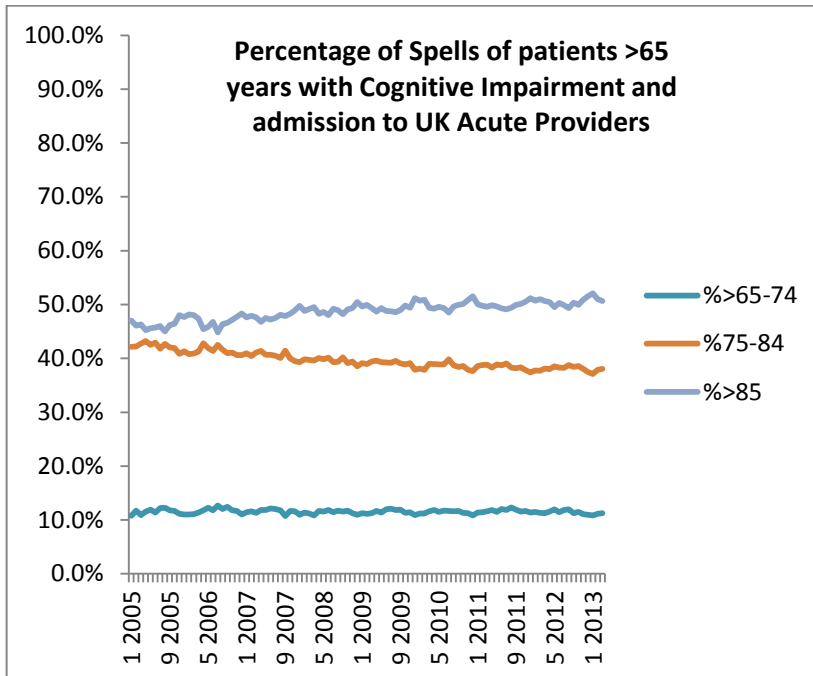
- R54X    R54X-    R54XD    R54X D    R54XW
- R54X0    R54XA    R54X.    R54XX    R54XI
- R54X6    R54X A    R54X9    R54X-D    Other

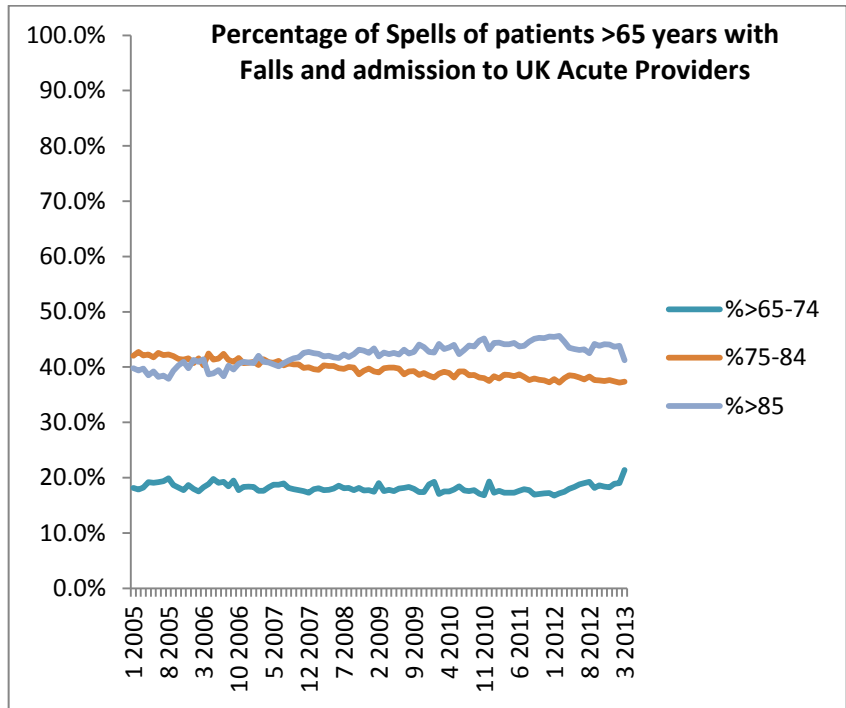
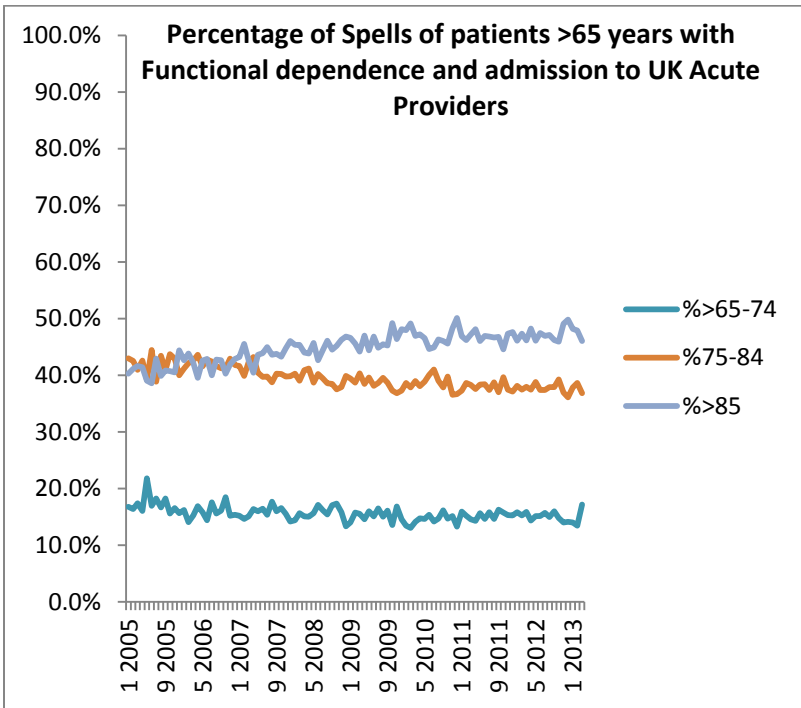
**Pressure Ulcers Coding Prevalence Over Time**  
 All episodes at acute providers, Jan '05 to Mar '13

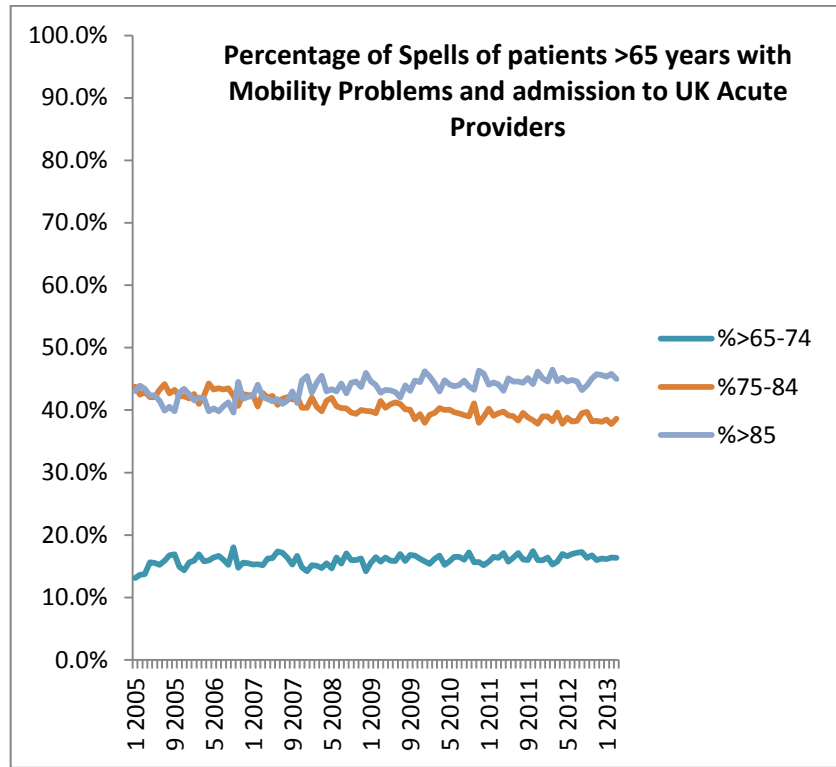
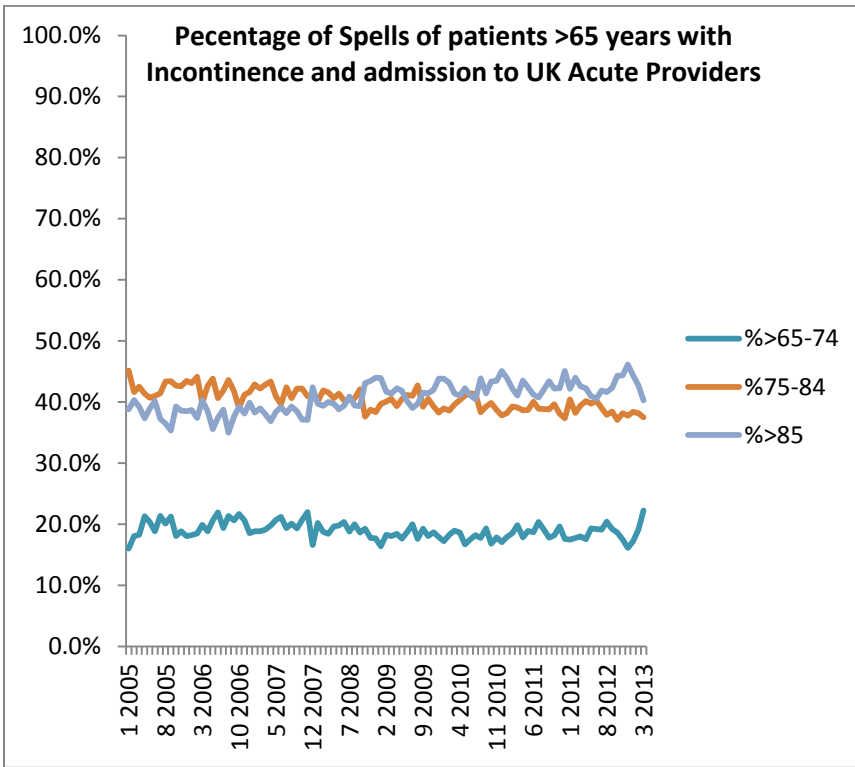


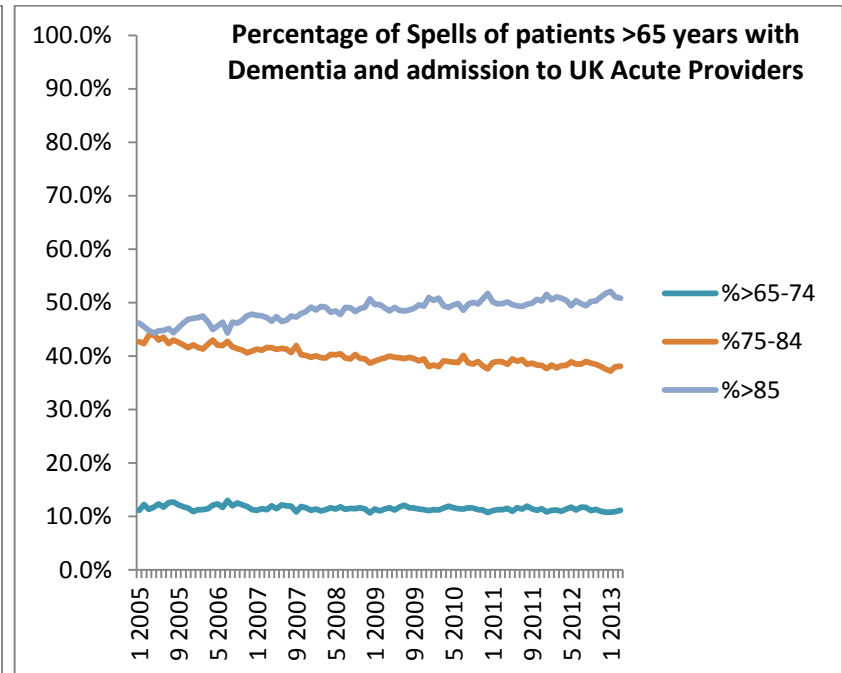
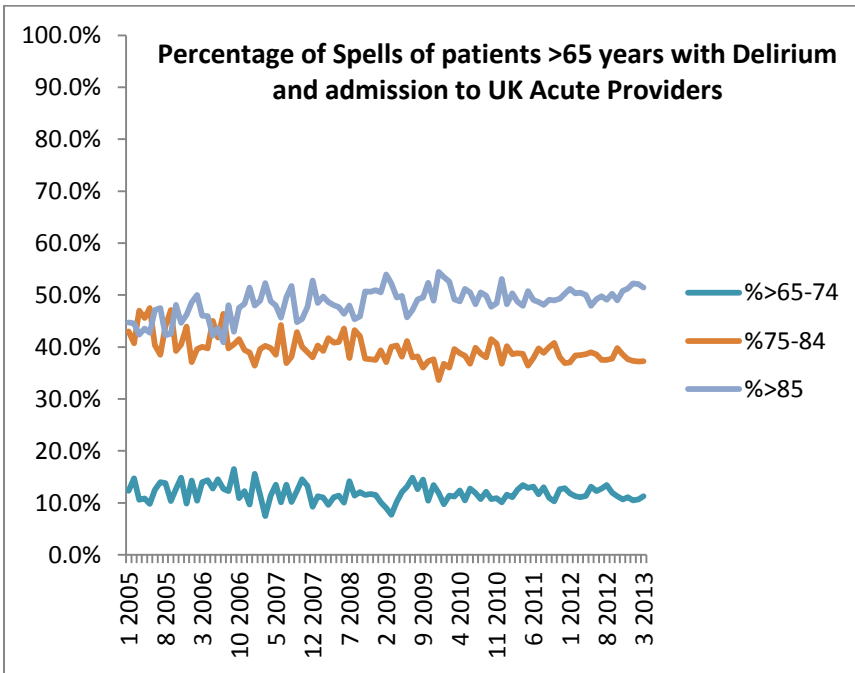
- L89X    ■ L89X-    ■ L89X A    ■ L89XD    ■ L893    ■ L89X D
- L899    ■ L890    ■ L891    ■ L89X-D    ■ L89X9    ■ L891-
- L893-    ■ L892    ■ L89X--    ■ L899-    ■ L892-    ■ L890-
- L899--    ■ L891--    ■ L890--    ■ L893-A    ■ L899 A    ■ L890D
- L892--    ■ Other

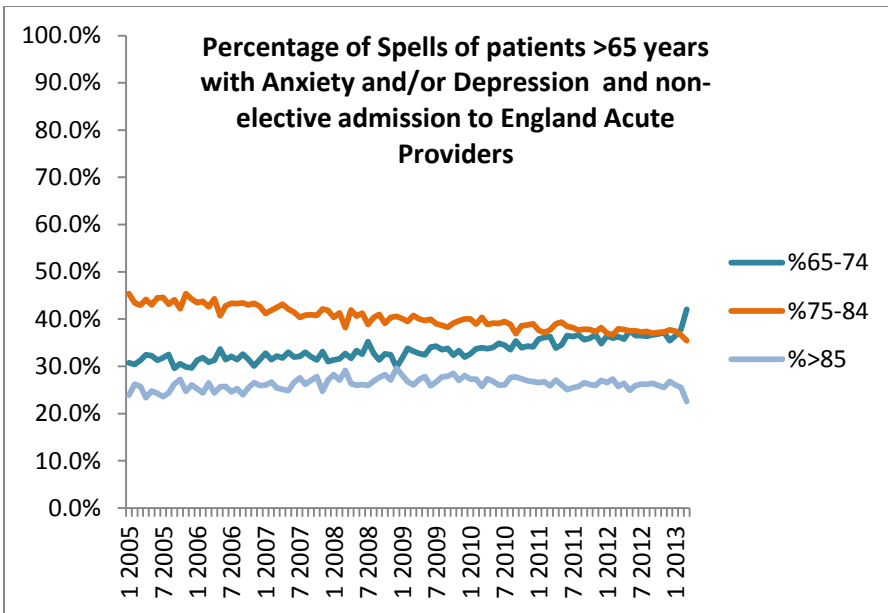
Appendix 3













Appendix 4

<http://www.ons.gov.uk/ons/taxonomy/index.html?nscl=Population+Estimates>

ENGLAND	2005	2013	% change
All ages	50606000	53865817	6.44%
65-74	4189100	5023573	19.92%
75-84	2855100	3043739	6.61%
85+	986800	1237867	25.44%

% of population

ENGLAND	2005	2013	% change
Denominator, all ages	50606000	53865817	6.44%
65-74	8.28%	9.33%	12.66%
75-84	5.64%	5.65%	0.16%
85+	1.95%	2.30%	17.85%

% of >65yo population

ENGLAND	2005	2013	% change
Denominator, o65s	8031000	9305179	15.87%
65-74	52%	54%	3.50%
75-84	36%	33%	-7.99%
85+	12%	13%	8.27%