

Supplementary Table 1: Fall-related mortality rates per 100,000 in Slovakia 2003-2010 by age groups and sex

	Year/ Age Group	65-74	75-84	85-94	95+	Total Crude Rate	Total Standardized*	
							Rate	95% CI
Male	2003	29	48	70	310	37.41	38.87	38.84-38.89
	2004	41	41	149	134	46.15	49.12	49.09-49.15
	2005	41	60	122	242	52.05	53.77	53.74-53.8
	2006	41	55	63	229	47.37	47.77	47.75-47.8
	2007	29	37	87	103	35.26	36.04	36.01-36.06
	2008	45	68	123	192	57.4	58.08	58.05-58.11
	2009	37	43	99	89	43.09	43.71	43.68-43.74
	2010	30	61	96	355	44.95	45.59	45.56-45.61
	Annual Average	37	52	101	207	45.48	46.57	46.54-46.6
Female	2003	7	22	50	59	15.47	14.89	14.87-14.9
	2004	6	25	89	213	19.13	18.25	18.24-18.27
	2005	6	32	58	146	20.44	18.53	18.51-18.54
	2006	10	25	75	45	20.94	19.43	19.41-19.44
	2007	9	17	36	122	15.4	14.5	14.04-14.06
	2008	8	20	49	78	16.33	14.67	14.66-14.68
	2009	6	23	70	141	18.95	16.39	16.38-16.4
	2010	8	26	107	140	24.68	21.6	21.05-21.07
	Annual Average	8	22	68	120	18.19	16.65	16.64-16.67
Total	2003	16	31	56	128	23.7	23.73	23.72-23.75
	2004	20	30	107	191	29.23	29.97	29.96-29.98
	2005	20	42	77	173	32.25	31.66	31.65-31.67
	2006	23	36	71	97	30.79	30.29	30.28-30.3
	2007	17	24	50	116	22.57	22.16	22.15-22.17
	2008	23	36	70	110	31.64	30.63	30.62-30.64
	2009	19	30	78	101	27.81	26.75	26.74-26.76
	2010	17	38	104	201	32.26	30.31	30.3-30.32
	Annual Average	19	33	77	139	28.82	28.22	28.21-28.23

*Rates standardized for age by the direct method using the WHO World standard population [12]

CI= Confidence Interval

Supplementary Table 2: Fall-related mortality rates per 100,000 in Austria 2003-2010 by age groups and sex

	Year/Age Group	65-74	75-84	85-94	95+	Total Crude Rate	Total Standardized*	
							Rate	CI 95%
Male	2003	28	73	308	566	62.17	64.62	64.6-64.65
	2004	30	90	290	522	67.31	69.33	69.3-69.35
	2005	32	90	380	1066	75.27	79.57	79.54-79.59
	2006	23	77	281	962	59.59	62.14	62.11-62.16
	2007	22	78	165	455	50.95	51.08	51.07-51.1
	2008	20	80	229	472	55.42	55.39	55.37-55.41
	2009	23	77	203	587	54.94	54.87	54.85-54.89
	2010	25	71	203	495	54.88	54.28	54.26-54.3
	Annual Average	25	79	249	633	59.69	60.63	60.61-60.65
Female	2003	10	61	293	818	70.44	49.88	49.87-49.9
	2004	11	57	215	515	57.32	42.27	42.25-42.29
	2005	9	68	258	641	67	47.85	47.84-47.87
	2006	10	52	172	422	49.48	35.88	35.87-35.89
	2007	8	40	139	289	39.76	28.48	28.47-28.49
	2008	8	39	136	260	39.55	27.98	27.97-27.99
	2009	8	42	131	230	40	28.19	28.18-28.21
	2010	8	43	142	365	43.54	29.68	29.67-29.69
	Annual Average	9	51	179	421	50.48	35.69	35.68-35.71
Total	2003	18	65	297	772	67.24	56.29	56.27-56.3
	2004	20	69	234	517	61.24	52.42	52.41-52.44
	2005	20	76	289	720	70.29	59.28	59.27-59.3
	2006	16	61	200	527	53.56	44.88	44.87-44.89
	2007	15	54	145	321	44.32	37.29	37.28-37.3
	2008	14	55	160	301	46.04	37.97	37.95-37.98
	2009	15	56	150	300	46.17	38.24	38.23-38.25
	2010	16	54	158	390	48.26	39.44	39.43-39.45
	Annual Average	16	61	197	461	54.19	45.03	45.02-45.04

*Rates standardized for age by the direct method using the WHO World standard population [12]

CI= Confidence Interval

Supplementary Table 3: Rate ratios of fall related mortality per 100,000 population by age groups in Slovakia 2003-2012*

	Year/age group	65-74	75-84		85-94		95+	
			Ratio	CI 95%	Ratio	CI 95%	Ratio	CI 95%
Male	2003	1	1.7	1.1-2.6	2.5	1.02-5.2	11.6	1.8-37.8
	2004	1	1.1	0.6-1.5	3.7	2-6.2	3.8	0.2-16.7
	2005	1	1.5	0.99-2.1	23	1.6-5.1	0.6	0.97-20.1
	2006	1	1.3	0.9-2	1.6	0.7-3.1	6.2	0.9-19.6
	2007	1	1.3	0.8-2	3	1.5-5.4	4.1	0.2-18.1
	2008	1	1.5	1.1-2.2	2.8	1.6-4.5	4.6	0.7-14.7
	2009	1	1.2	0.7-1.8	2.7	1.5-4.5	2.7	0.1-12.1
	2010	1	2.5	1.4-3.1	3.3	1.8-5.7	12.3	3.6-30.4
	Annual Average	1	1.4	0.9-2.1	2.8	1.4-4.9	6.4	0.98-20.5
Female	2003	1	2.9	1.6-5.5	6.9	3.2-14.6	9.9	0.4-44.5
	2004	1	4.4	2.3-8.9	16.6	8.1-33.5	39.7	10.8-115.5
	2005	1	5	2.8-9.4	9.5	4.4-18.9	23.7	5.2-73.4
	2006	1	2.5	1.5-4.3	7.4	4.1-13.4	5.7	0.2-24
	2007	1	1.9	1.1-3.4	3.9	1.9-7.9	14	3.2-41.1
	2008	1	2.6	1.4-4.8	6.4	3.3-12.5	10.8	1.6-38
	2009	1	3.6	2-7.1	11.3	6-22.1	23.4	6.5-66.2
	2010	1	3.3	1.9-5.9	13.5	7.9-24.1	18.4	5.2-49.6
	Annual Average	1	2.8	1.5-5.2	8.9	4.7-17.1	17.5	3.9-52.6
Total	2003	1	1.9	1.3-2.8	3.6	2.1-5.8	8.5	2-22.8
	2004	1	1.5	1.1-2.1	5.4	3.6-7.9	10	3.4-22.2
	2005	1	2.4	1.5-2.7	3.8	2.4-5.6	8.7	3-19.5
	2006	1	1.6	1.2-2.1	3.2	2.1-4.7	4.5	1.1-12
	2007	1	1.4	0.96-2	2.9	1.8-4.6	7	2.1-16.9
	2008	1	1.6	1.2-2.2	3.9	1.5-12.1	5.3	1.5-12.1
	2009	1	1.6	1.1-2.1	4.2	2.8-6.1	5.6	1.7-13.3
	2010	1	2.3	1.6-3.1	6.2	4.3-8.8	12.2	5.3-23.9
	Annual Average	1	1.7	1.2-2.4	4.1	2.7-5.9	8.2	2.8-18.4

*The rates in age group 65-74 are used as reference, all other rate ratios are relative to this category

CI= Confidence Interval

Supplementary Table 4: Rate ratios of fall related mortality per 100,000 population by age groups in in Austria 2003-2012*

	Year/age group	65-74	75-84		85-94		95+	
			Ratio	CI 95%	Ratio	CI 95%	Ratio	CI 95%
Male	2004	1	2.9	2.3-3.4	9.5	7.1-12.8	17.4	7.8-33.8
	2005	1	2.8	2.2-3.6	12	9.2-15.6	33.8	19.8-54.4
	2006	1	3.4	2.6-4.5	12.5	9.2-16.9	43	24.9-70.2
	2007	1	3.5	2.7-4.7	7.5	5.4-10.5	21	9.8-39.7
	2008	1	3.9	3-5.2	11.2	8.3-15.3	23.5	11.3-43.8
	2009	1	3.3	2.6-4.4	8.8	6.5-11.9	25.7	13.6-44.4
	2010	1	2.8	2.2-3.7	8	6-10.6	19.7	9.9-35.2
	Annual Average	1	3.1	2.4-4.1	9.9	7.4-13.3	25.7	13.3-45.2
Female	2003	1	6	4.3-8.8	28.8	20.6-41.5	80.6	52.8-124.3
	2004	1	5.1	3.7-7.2	19	13.7-27	45.7	28.9-71.7
	2005	1	7.2	5.1-10.3	27.2	19.4-39.3	67.9	44.1-105.5
	2006	1	5.4	3.8-7.7	17.9	12.8-25.9	44.1	27.5-70.4
	2007	1	5	3.4-7.4	17.1	11.9-25.3	35.8	20.9-60.4
	2008	1	4.7	3.2-6.9	16.1	11.3-23.6	31	18-52.2
	2009	1	5.3	3.7-7.9	16.4	11.5-24.2	28.9	16.5-49.6
	2010	1	5.4	3.8-8	19.9	12.6-26.3	46.4	28.8-75
	Annual Average	1	5.6	3.9-8.1	19.7	13.9-28.5	47	29.3-75.3
Total	2003	1	3.6	2.9-4.4	16.1	13.1-19.9	42	30.6-57.1
	2004	1	3.4	2.8-4.3	11.7	9.5-14.4	25.9	18.1-36.2
	2005	1	3.9	3.2-4.7	14.7	12.1-17.9	36.8	27.2-49.1
	2006	1	3.9	3.2-4.9	12.9	10.4-16.1	33.9	24.2-46.9
	2007	1	3.7	3-4.7	10	8-12.7	22.2	14.8-32.4
	2008	1	3.9	3.1-4.9	11.5	9.2-14.4	21.6	14.4-31.6
	2009	1	3.7	3-4.6	10	8.1-12.5	20.1	13.5-29.1
	2010	1	3.4	2.7-4.2	9.9	8-12.2	24.4	17.2-34
	Annual Average	1	3.7	3-4.6	12	9.7-14.9	28.4	20-39.6

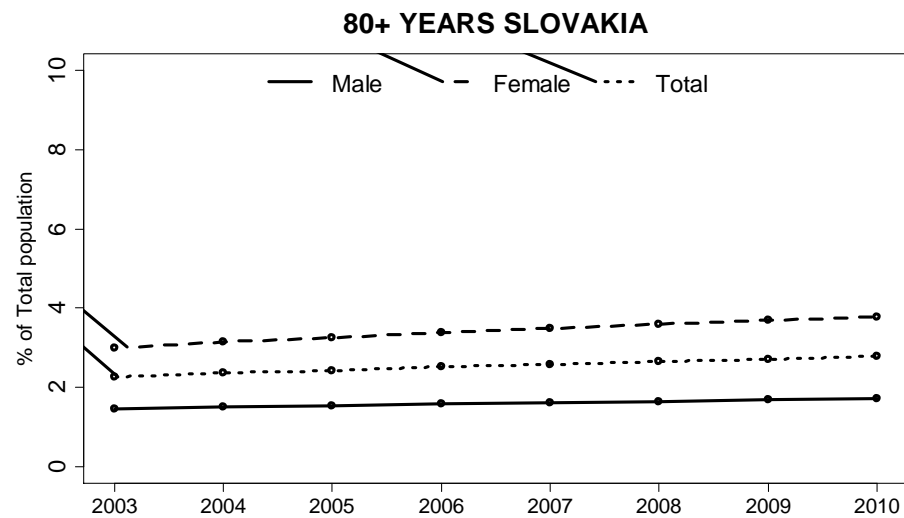
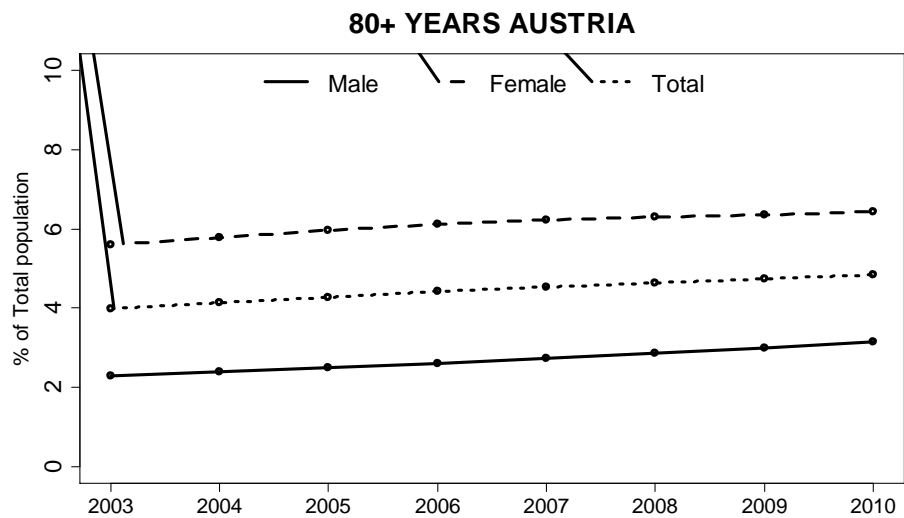
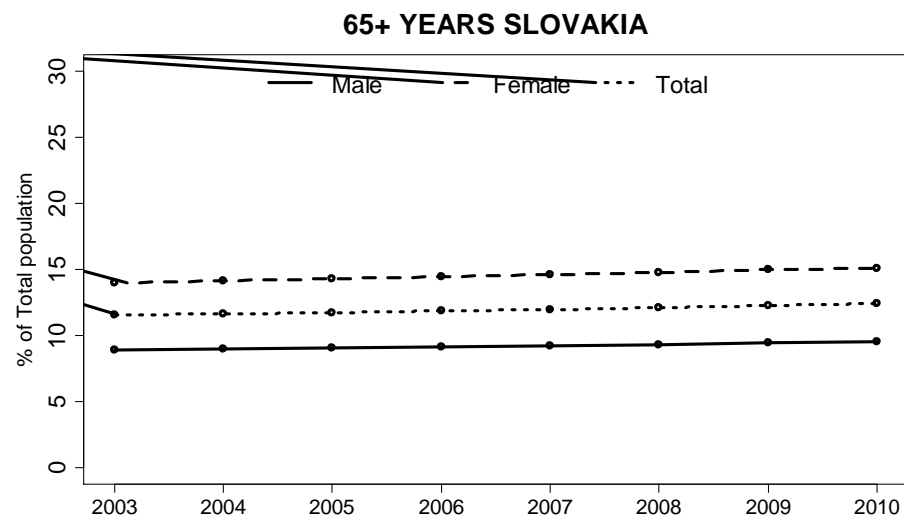
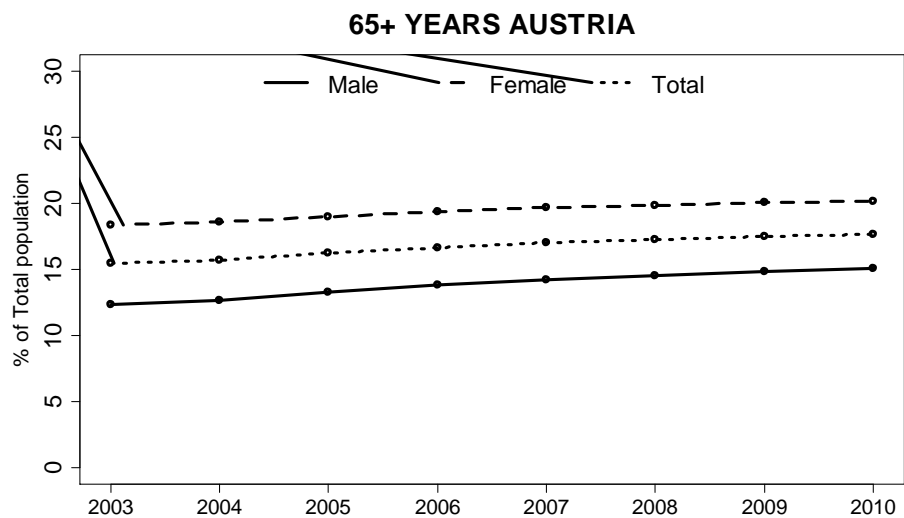
*The rates in age group 65-74 are used as reference, all other rate ratios are relative to this category

CI= Confidence Interval

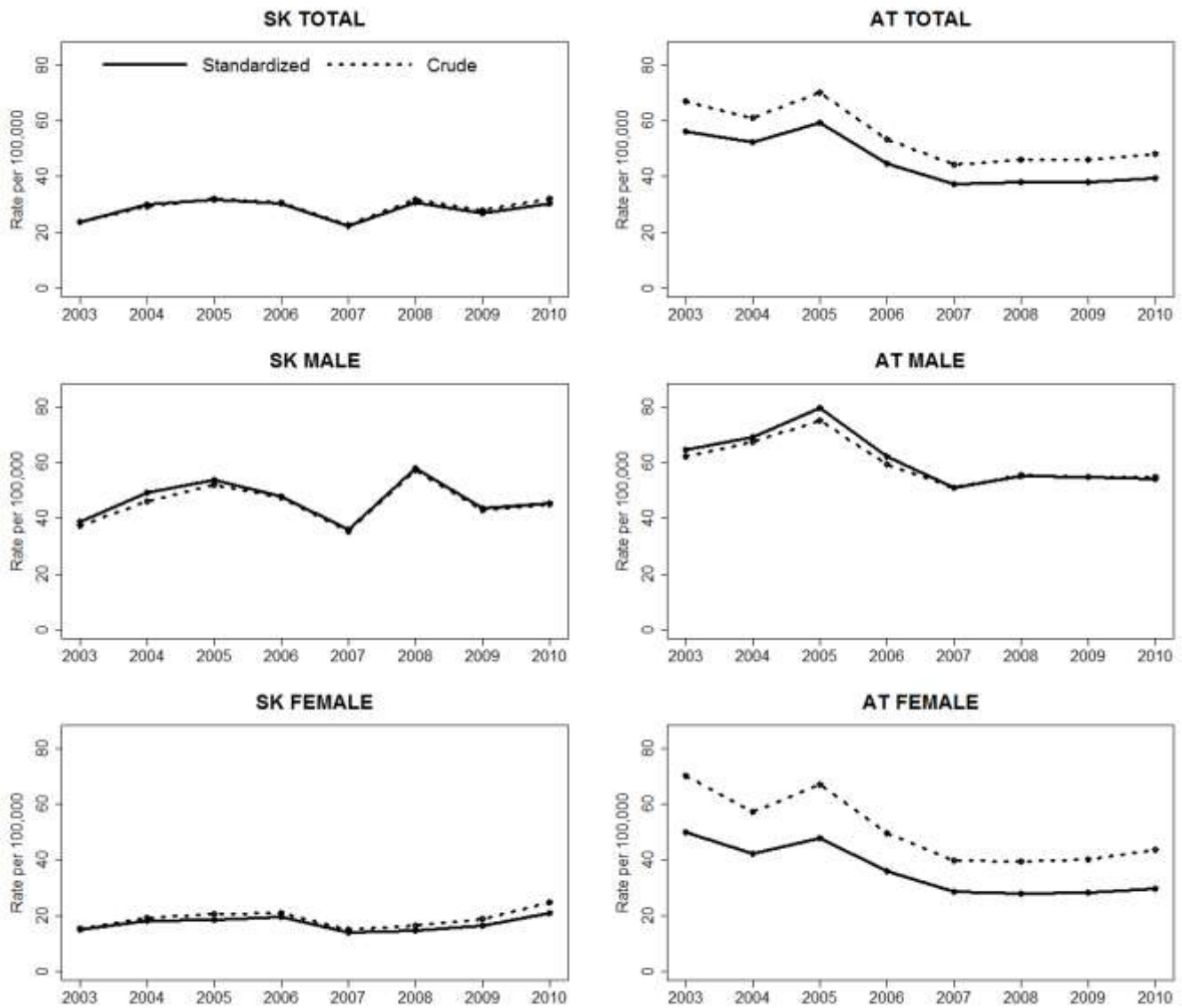
Supplementary Table 5: Proportions of persons 65 years and older and 80 years and older in Slovakia and Austria in 2003-2010 by sex

		Population group	2003	2004	2005	2006	2007	2008	2009	2010	
AUSTRIA	Male	Total (N)	3940285	3967701	3998952	4022516	4036548	4050215	4061195	4071773	
		65+ Years (N,%)	485782 (12,3%)	503659 (12,7%)	531406 (13,3%)	555396 (13,8%)	575021 (14,2%)	589457 (14,6%)	604291 (14,9%)	614058 (15,1%)	
		80+ Years (N,%)	90939 (2,3%)	95172 (2,4%)	99882 (2,5%)	105035 (2,6%)	110717 (2,7%)	116552 (2,9%)	122257 (3,0%)	128353 (3,2%)	
	Female	Total (N)	4177960	4201740	4226326	4245432	4258641	4271326	4280288	4289296	
		65+ Years (N,%)	768014 (18,4%)	779802 (18,6%)	802958 (19,0%)	822456 (19,4%)	837343 (19,7%)	847029 (19,8%)	857651 (20,0%)	863544 (20,1%)	
		80+ Years (N,%)	233438 (5,6%)	243231 (5,8%)	252203 (6,0%)	260035 (6,1%)	265481 (6,2%)	269122 (6,3%)	272254 (6,4%)	275986 (6,4%)	
	Total	Total (N)	8118245	8169441	8225278	8267948	8295189	8321541	8341483	8361069	
		65+ Years (N,%)	1253796 (15,4%)	1283461 (15,7%)	1334364 (16,2%)	1377852 (16,7%)	1412364 (17,0%)	1436486 (17,3%)	1461942 (17,5%)	1477602 (17,7%)	
		80+ Years (N,%)	324377 (4,0%)	338403 (4,1%)	352085 (4,3%)	365070 (4,4%)	376198 (4,5%)	385674 (4,6%)	394511 (4,7%)	404339 (4,8%)	
	SLOVAKIA	Male	Total (N)	2610872		2614912	2616924	2621095	2626895	2633428	2639896
			65+ Years (N,%)	232506 (8,9%)	233987 (9,0%)	236306 (9,0%)	238561 (9,1%)	241022 (9,2%)	243899 (9,3%)	248289 (9,4%)	251361 (9,5%)
			80+ Years (N,%)	38346 (1,5%)	39765 (1,5%)	40533 (1,6%)	41607 (1,6%)	42575 (1,6%)	43479 (1,7%)	44626 (1,7%)	45469 (1,7%)
Female		Total (N)	2768078	2770261	2772373	2774260	2776671	2780077	2784946	2791128	
		65+ Years (N,%)	387805 (14,0%)	391962 (14,1%)	396332 (14,3%)	401078 (14,5%)	405760 (14,6%)	410406 (14,8%)	416845 (15,0%)	421363 (15,1%)	
		80+ Years (N,%)	83303 (3,0%)	87684 (3,2%)	90661 (3,3%)	94088 (3,4%)	96813 (3,5%)	99983 (3,6%)	102815 (3,7%)	105499 (3,8%)	
Total		Total (N)	5378950	5382574	5387285	5391184	5397766	5406972	5418374	5431024	
		65+ Years (N,%)	620311 (11,5%)	625949 (11,6%)	632638 (11,7%)	639639 (11,9%)	646782 (12,0%)	654305 (12,1%)	665134 (12,3%)	672724 (12,4%)	
		80+ Years (N,%)	121649 (2,3%)	127449 (2,4%)	131194 (2,4%)	135695 (2,5%)	139388 (2,6%)	143462 (2,7%)	147441 (2,7%)	150968 (2,8%)	

Supplementary figure 1: Proportions of persons 65 years and older and 80 years and older in Slovakia and Austria in 2003-2010 by sex

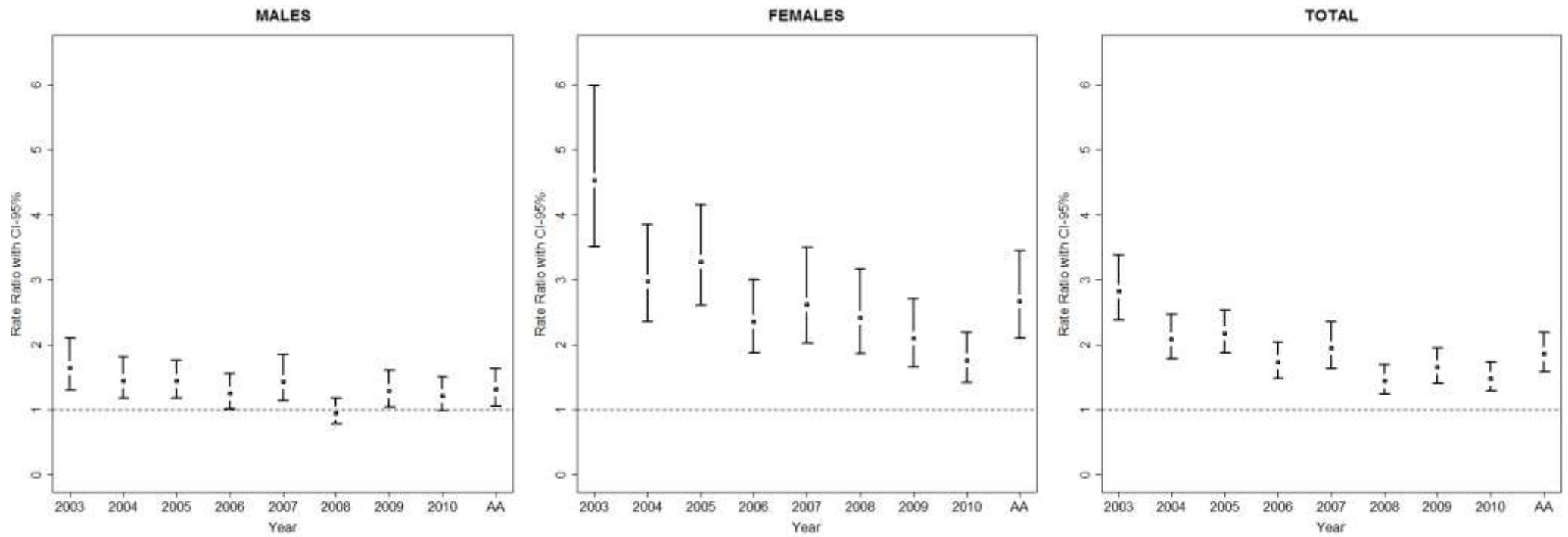


Supplementary figure 2: Crude and standardized fall related mortality rates per 100,000 person-years in Slovakia and Austria in 2003-2010



SK=Slovakia, AT=Austria

Supplementary Figure 3: Between country mortality rate ratios 2003-2010 and 95% confidence intervals by sex



AA=Annual Average; ratios are calculated using Slovakia as a reference (the value of 1 was assigned to each rate in Slovakia and all rates on the figure are relative to these)