

## Supplementary Figures and Tables

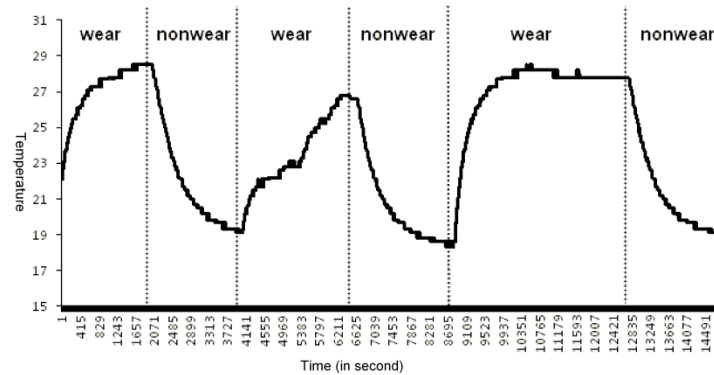


Figure S1. Changes of GeneActiv watch temperatures along with the wear and nonwear events:

x- data points in seconds, y- temperature.

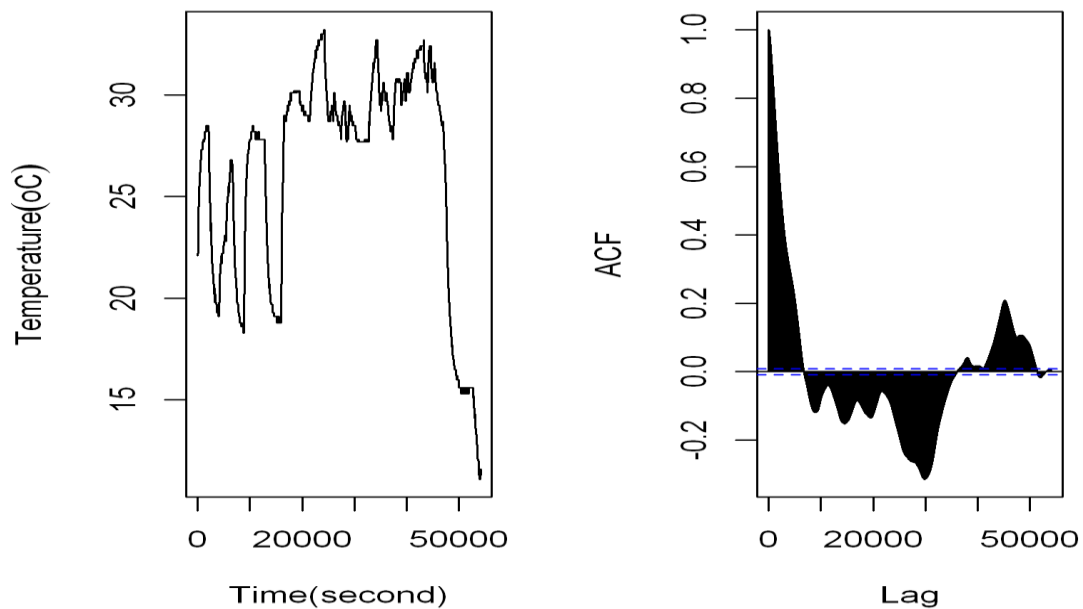


Figure S2. Accelerometer temperature autocorrelation: left- temperature time series; right- values of autocorrelation function (ACF). The dashed lines are 95% confidence bands.

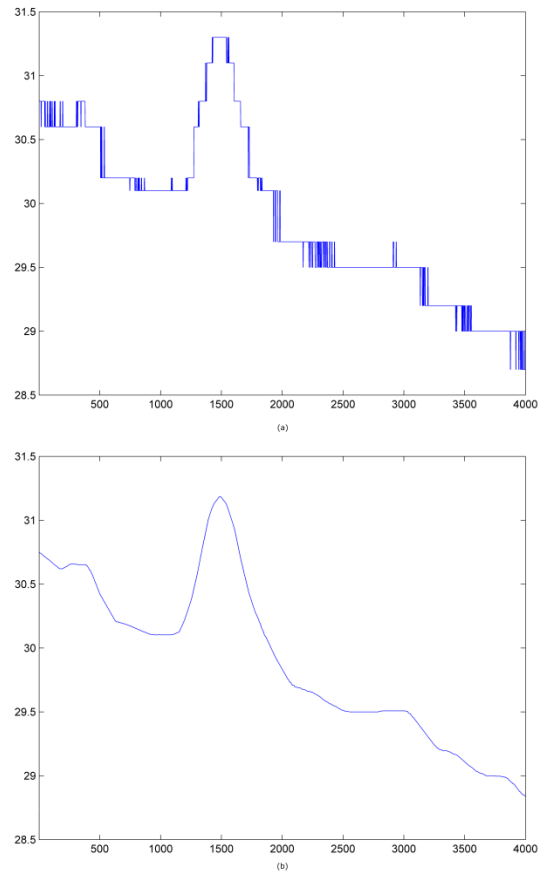


Figure S3. Examples of accelerometer original temperatures (a) and filtered temperatures (b).

Table S1. *Examples of GeneActiv outputs (SVM - sum of vector magnitudes; Temp-temperature)*

<i>Time stamp</i>	<i>x-axis (g)</i>	<i>y-axis (g)</i>	<i>z-axis (g)</i>	<i>Light (lux)</i>	<i>Button (1/0)</i>	<i>Temp (°C)</i>	<i>SVM</i>
2012-03-28 19:13:38:000	0.2846	0.8866	0.4314	0	0	21.2	2.64
2012-03-28 19:13:39:000	0.2846	0.8889	0.432	0	0	21.2	2.83
2012-03-28 19:13:40:000	0.2857	0.8868	0.4332	0	0	21.2	2.73
2012-03-28 19:13:41:000	0.2851	0.8875	0.4295	0	0	21.2	2.62
2012-03-28 19:13:42:000	0.3015	0.8905	0.4182	0	0	21.2	4.04
2012-03-28 19:13:43:000	0.3259	0.888	0.394	0	0	21.2	2.45
2012-03-28 19:13:44:000	0.3251	0.8874	0.3936	0	0	21	2.36
2012-03-28 19:13:45:000	0.3261	0.8878	0.3966	0	0	21	2.55