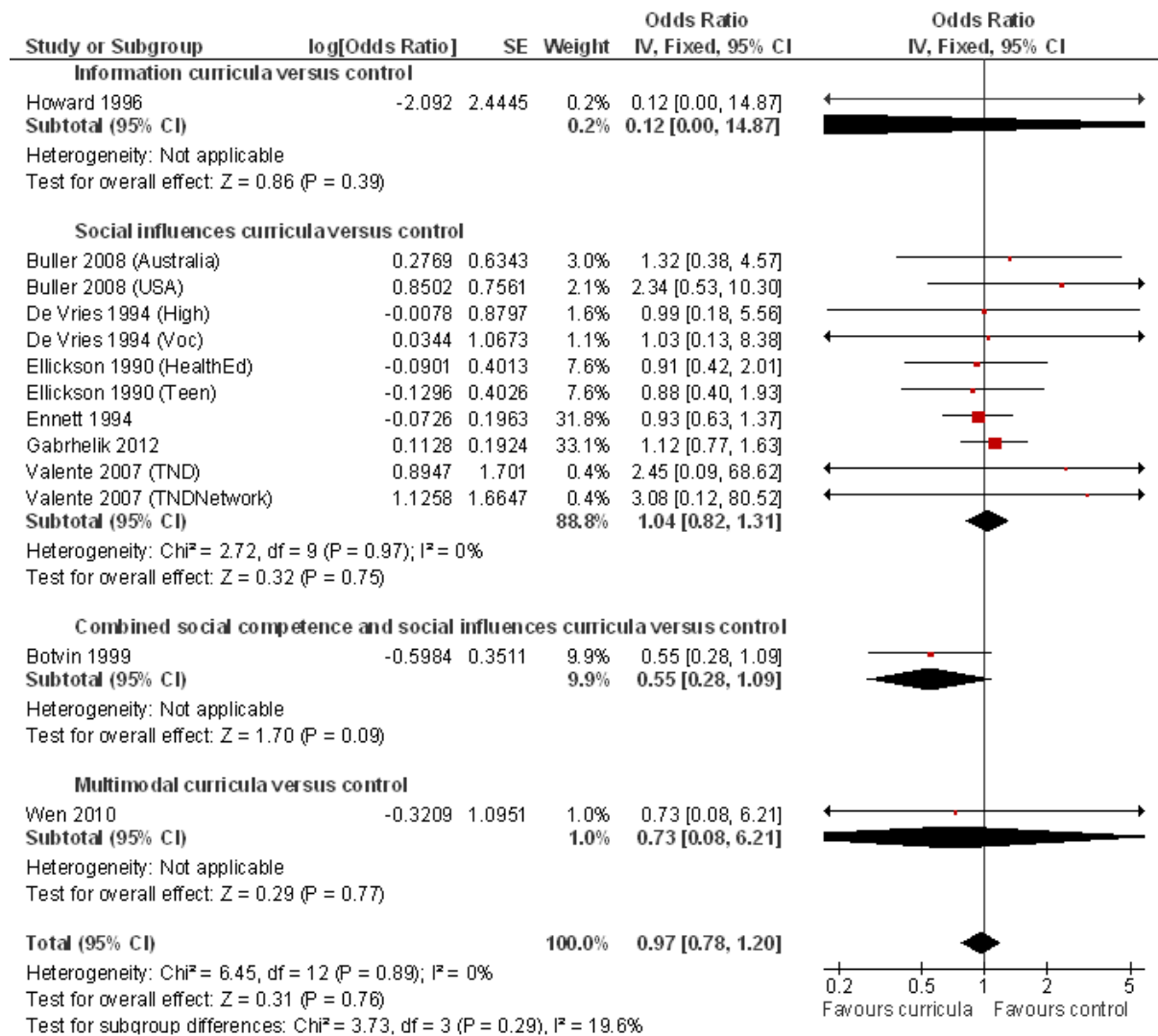


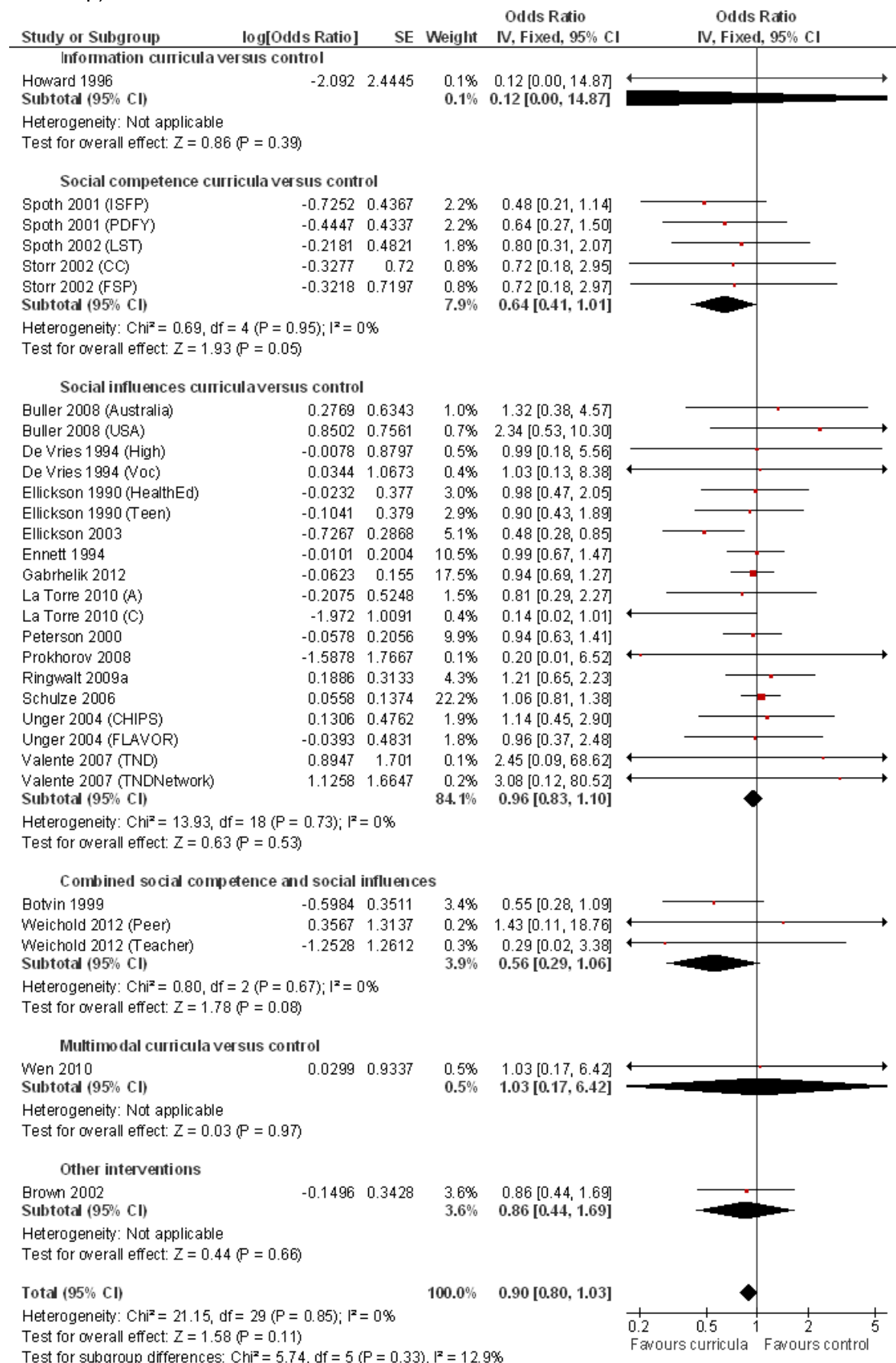
Online supplementary material D: Forest plots showing Sensitivity and Sub-group analyses

analyses

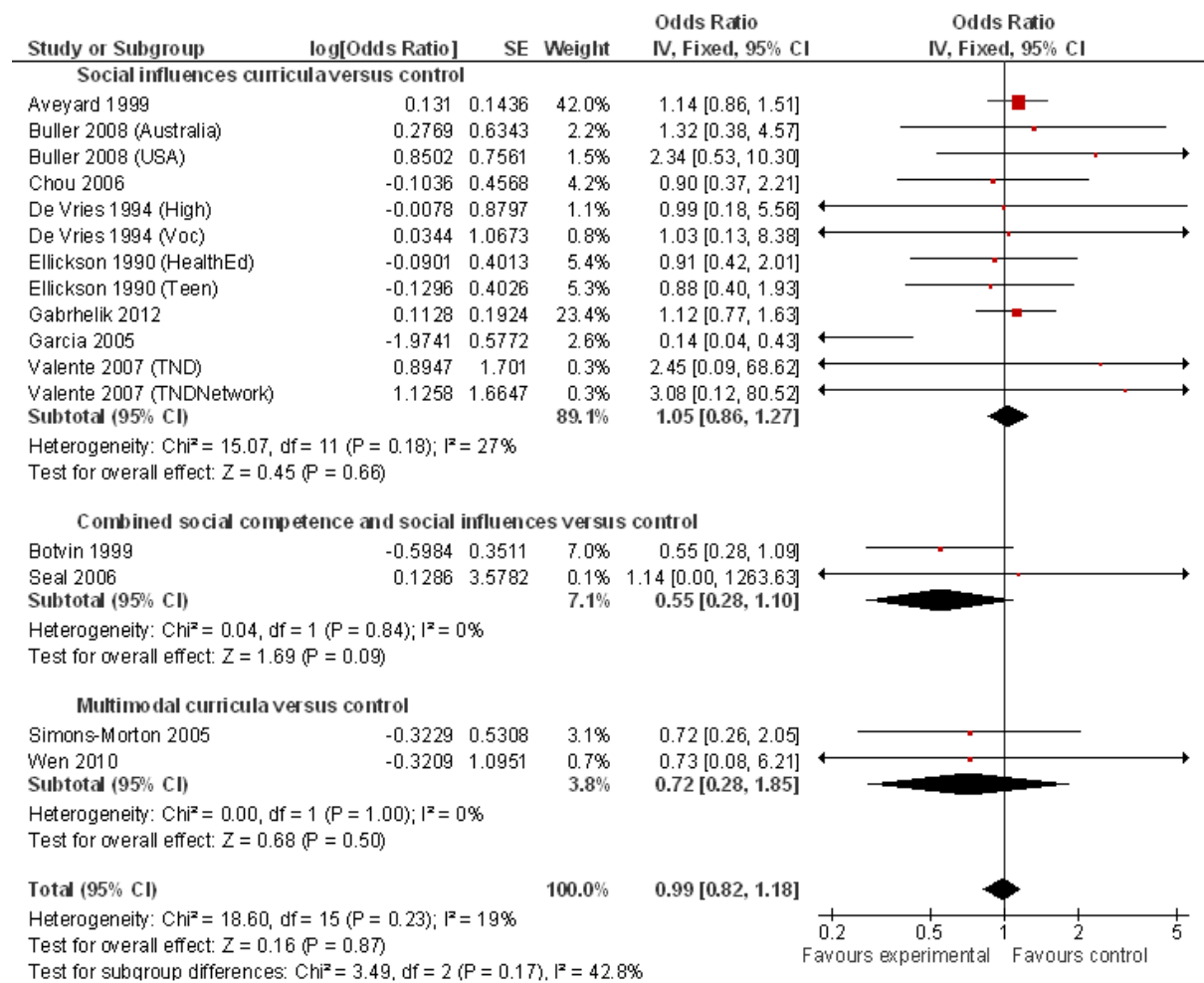
Forest plot showing results for curricula with low risk of attrition versus control (one year or less follow-up)



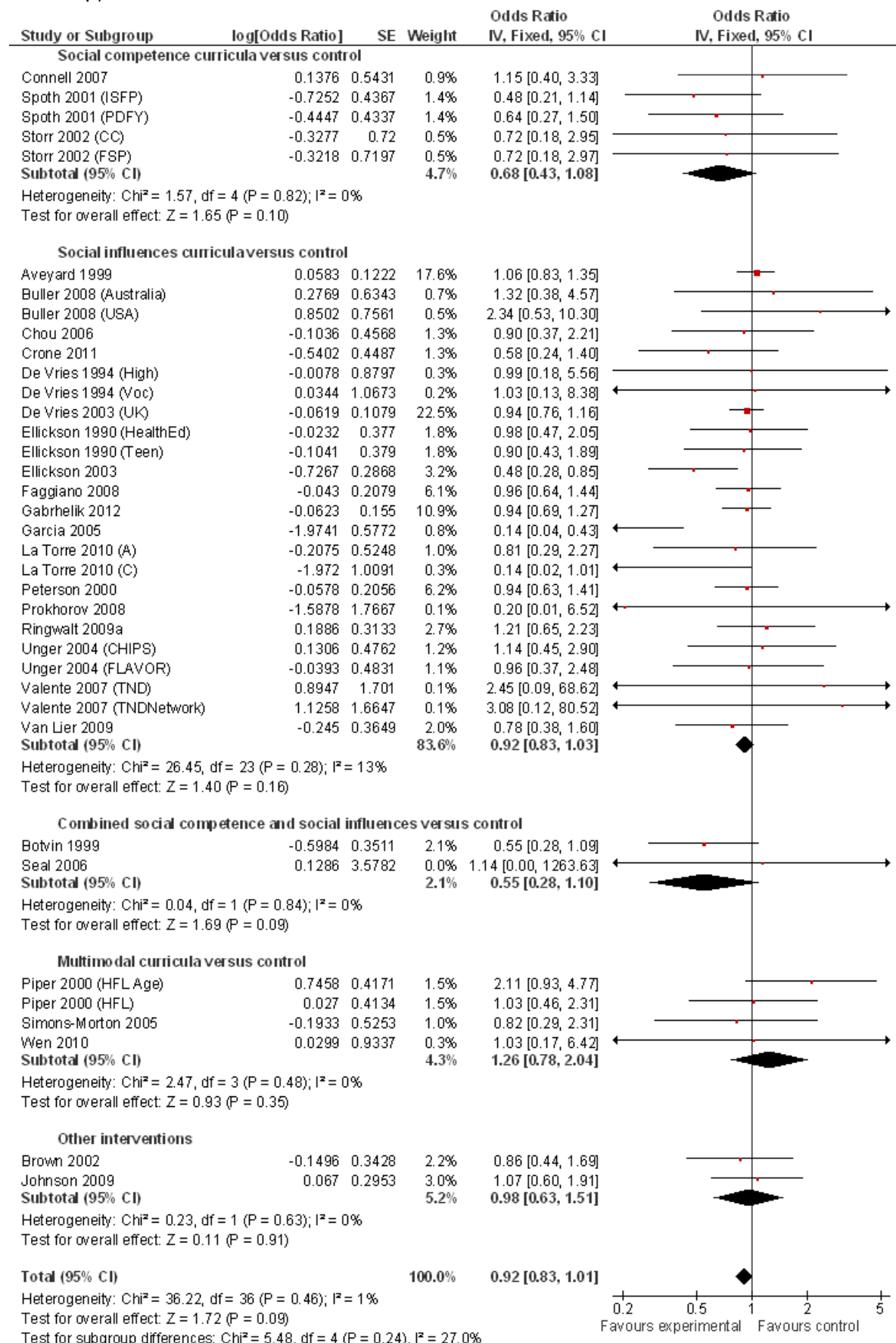
Forest plot showing results for curricula with low risk of attrition versus control (longest follow-up)



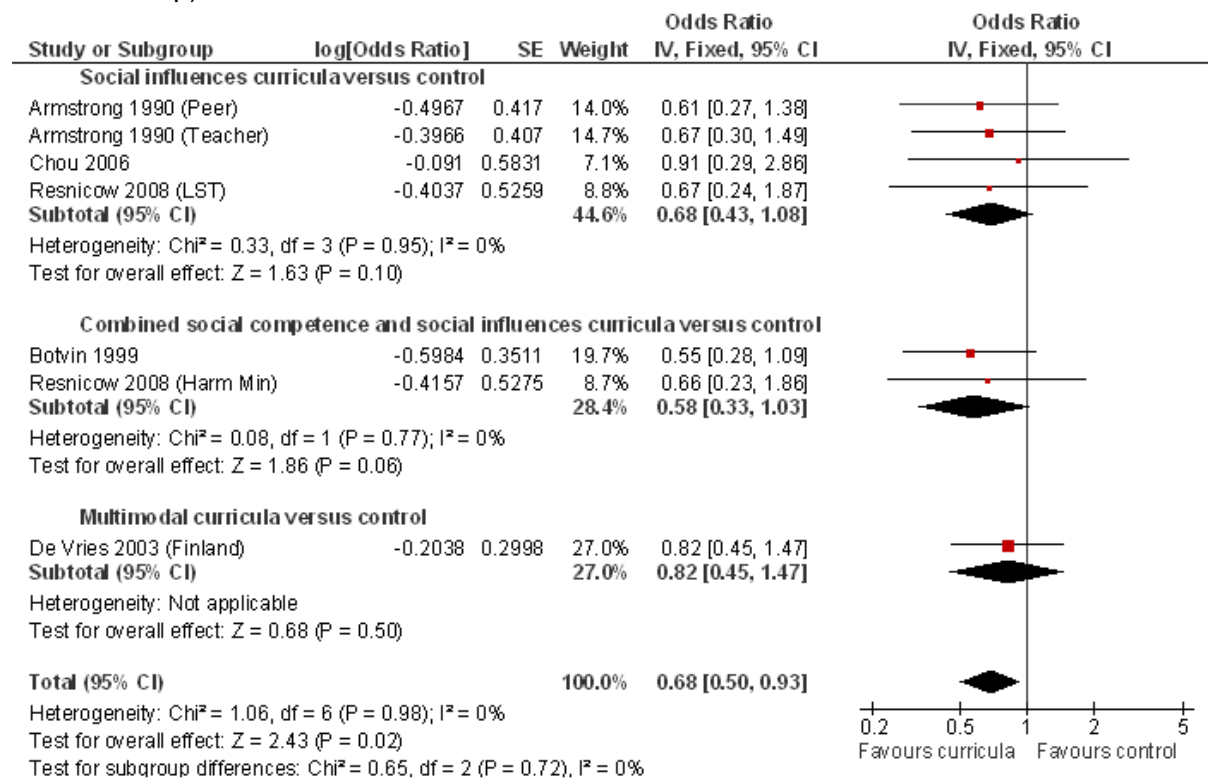
Forest plot showing results for curricula with low risk of selection bias versus control (one year or less follow-up)



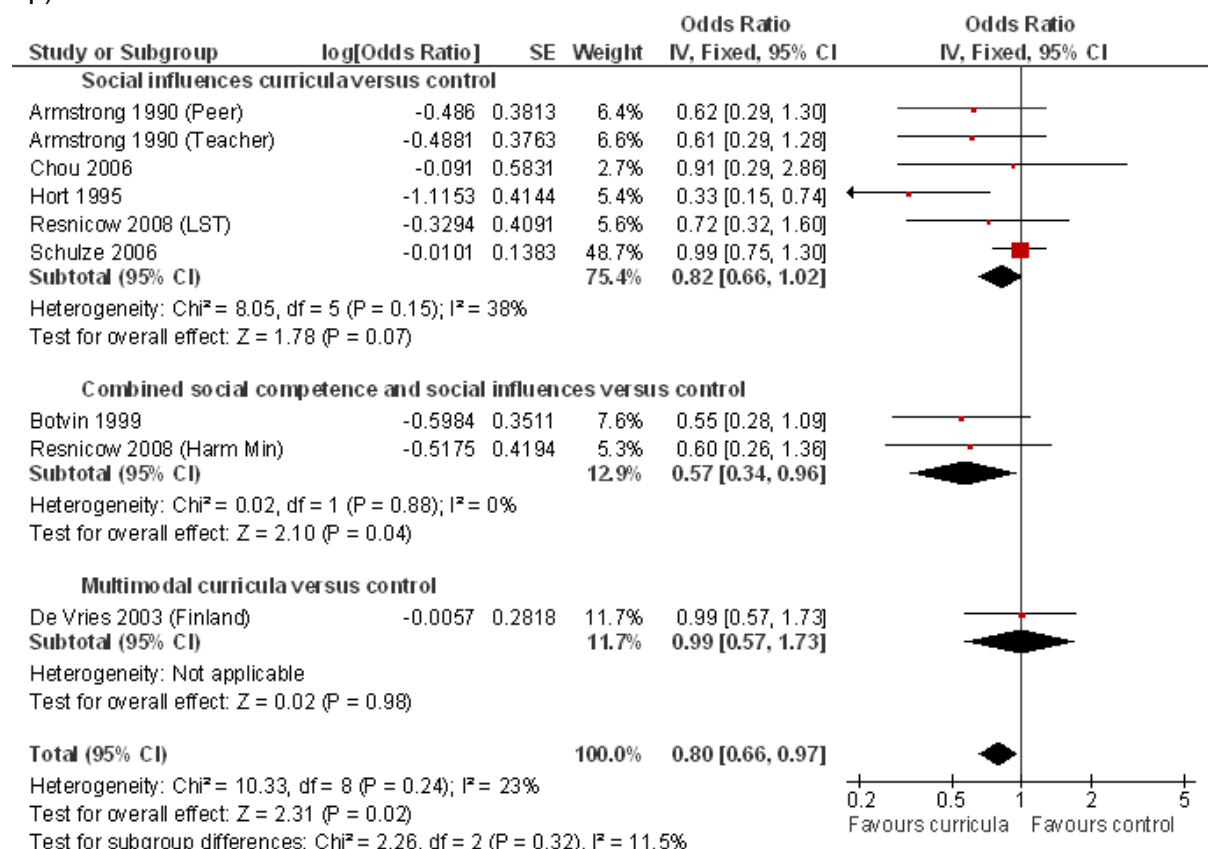
Forest plot showing results for curricula with low risk of selection bias versus control (longest follow-up)



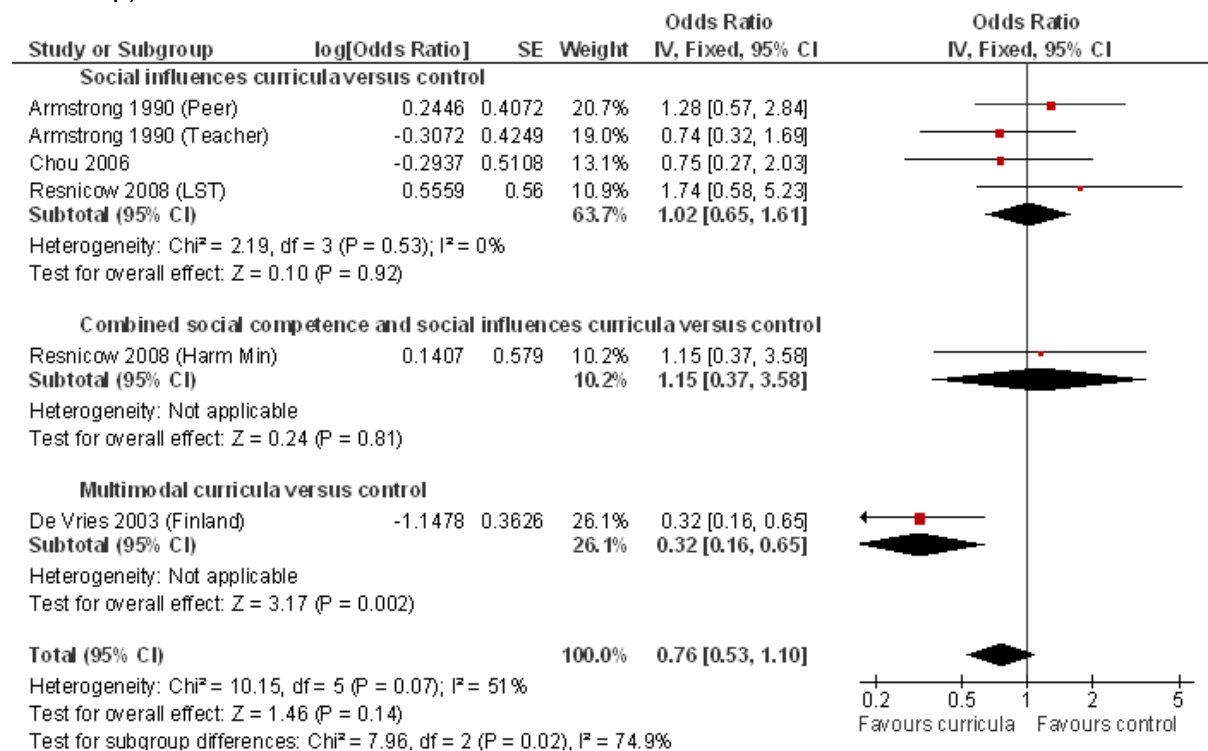
Forest plot showing results for curricula with female only data versus control (one year or less follow-up)



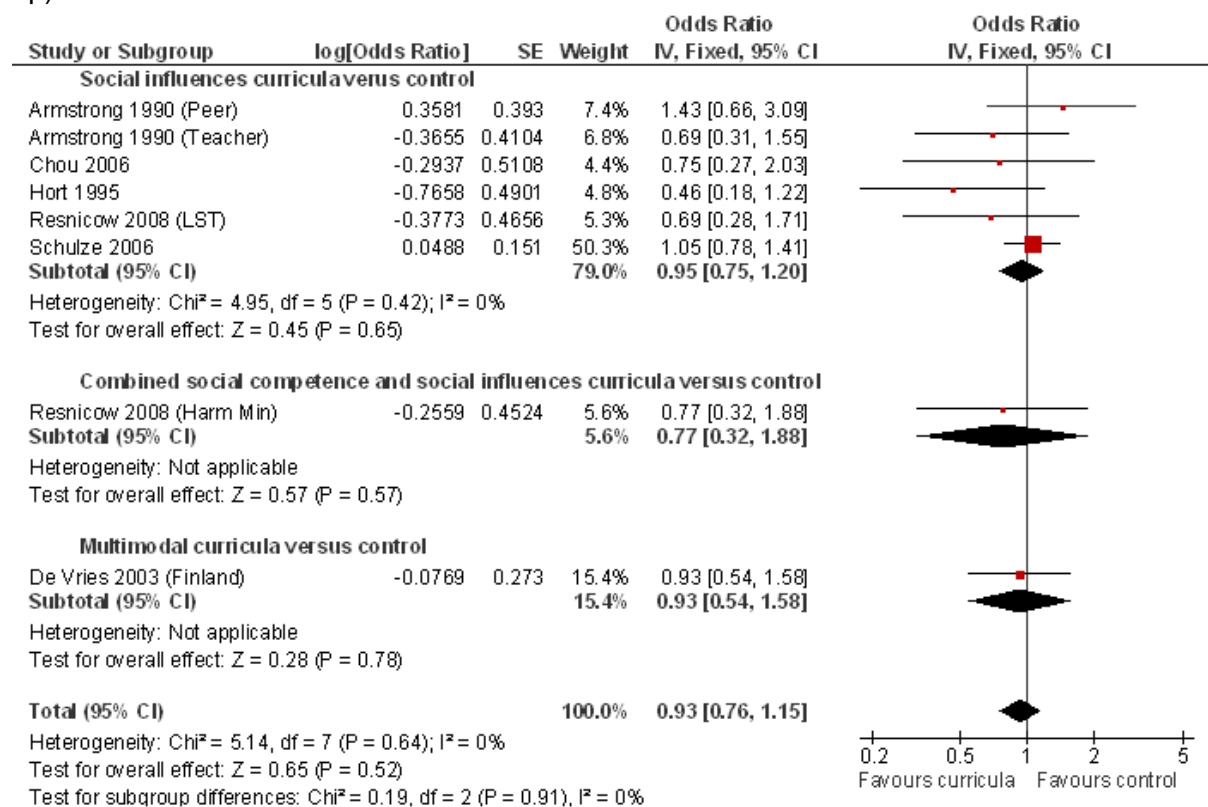
Forest plot showing results for curricula with female only data versus control (longest follow-up)



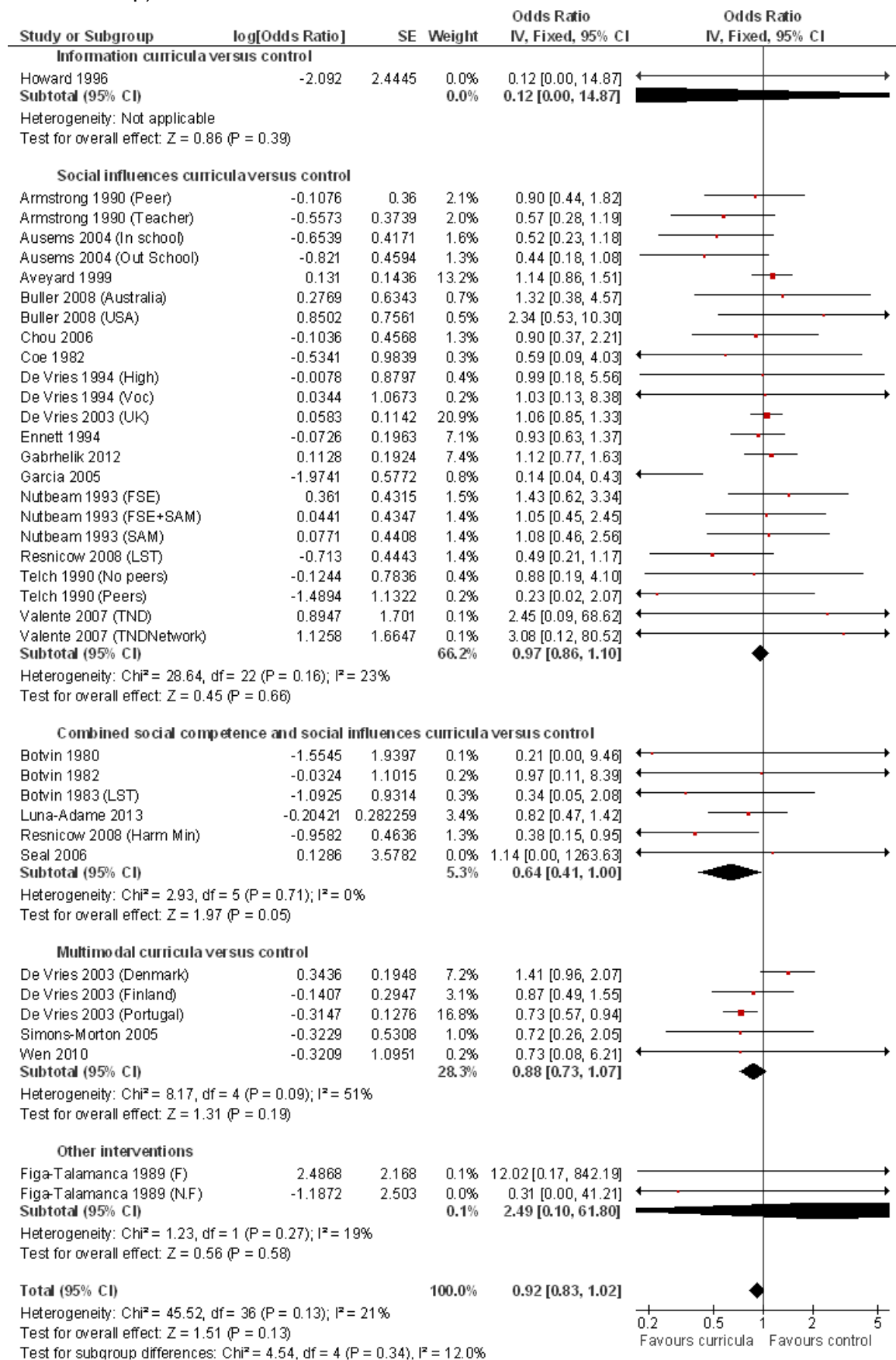
Forest plot showing results for curricula with male only data versus control (one year or less follow-up)



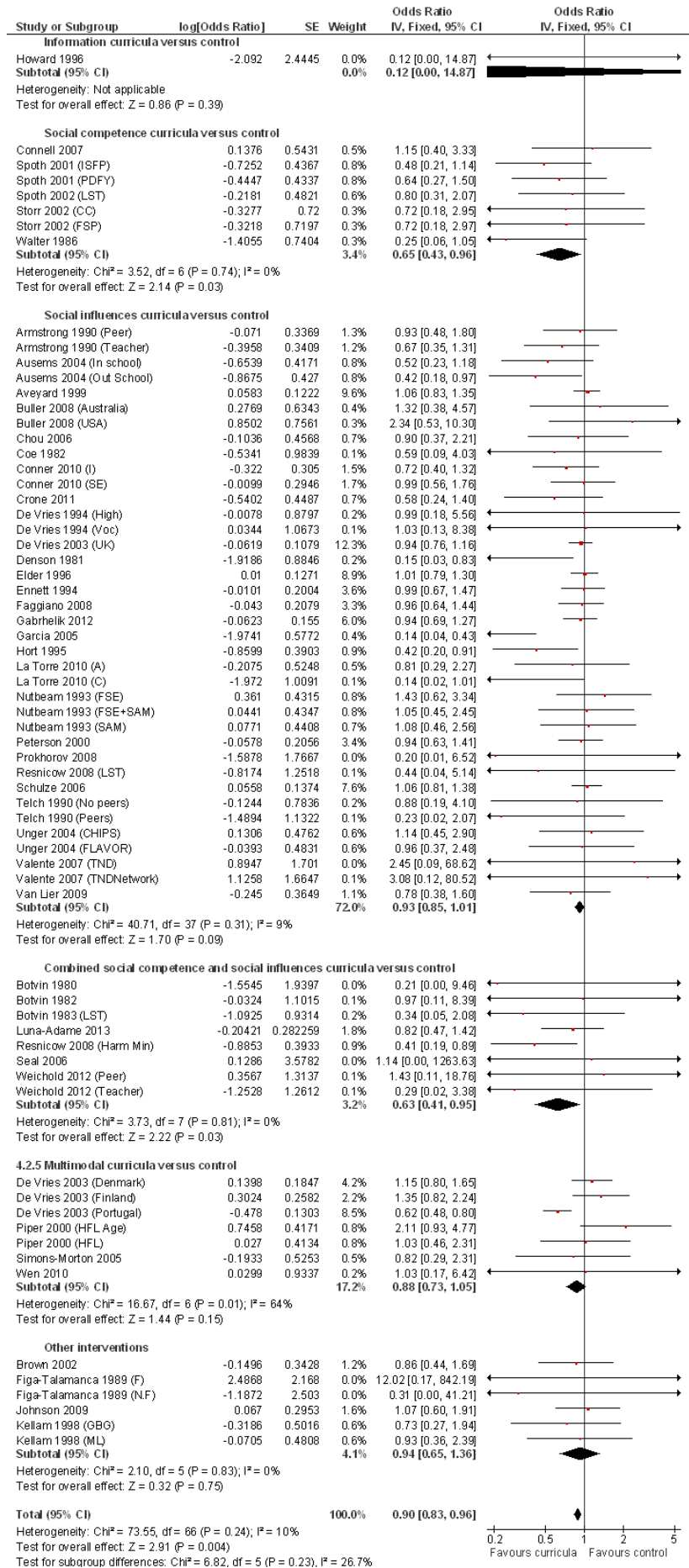
Forest plot showing results for curricula with male only data versus control (longest follow-up)



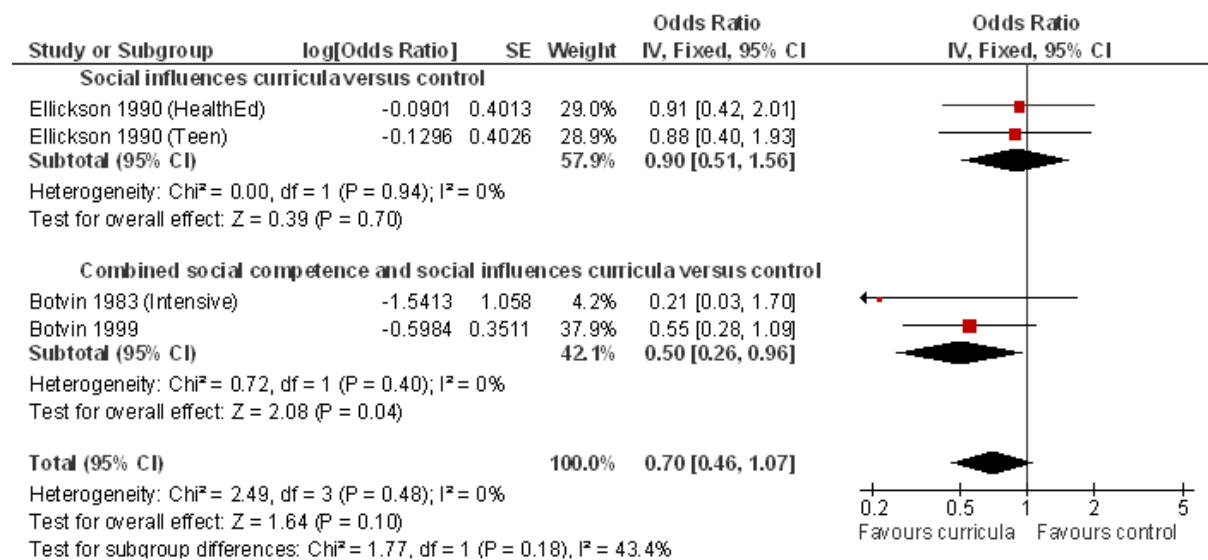
Forest plot showing results for curricula with no booster sessions versus control (one year or less follow-up)



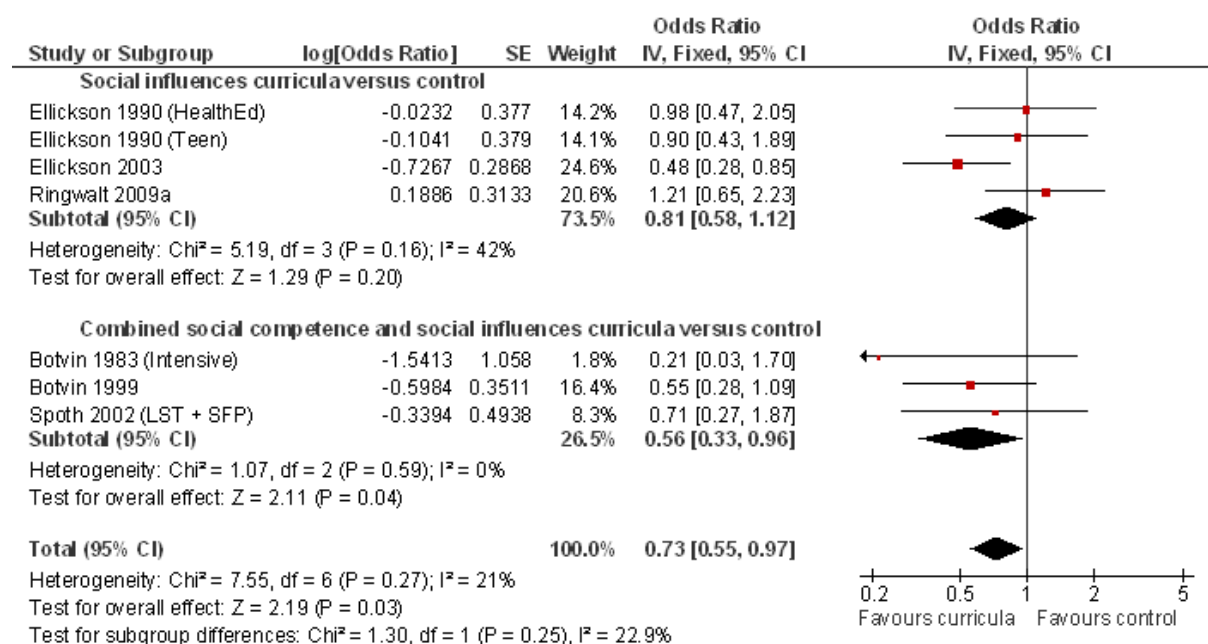
Forest plot showing results for curricula with no booster sessions versus control (longest follow-up)



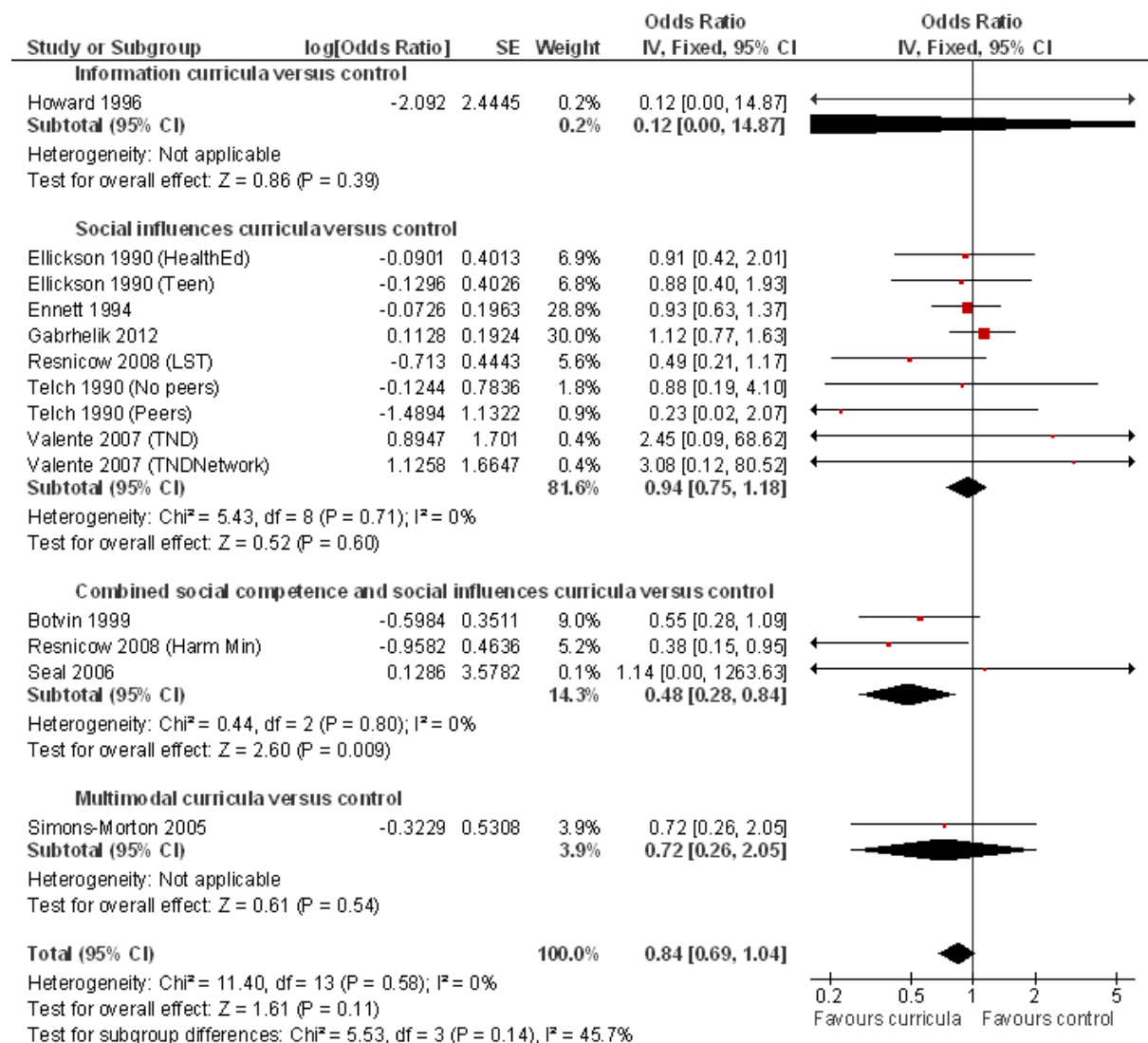
Forest plot showing results for curricula with booster sessions versus control (one year or less follow-up)



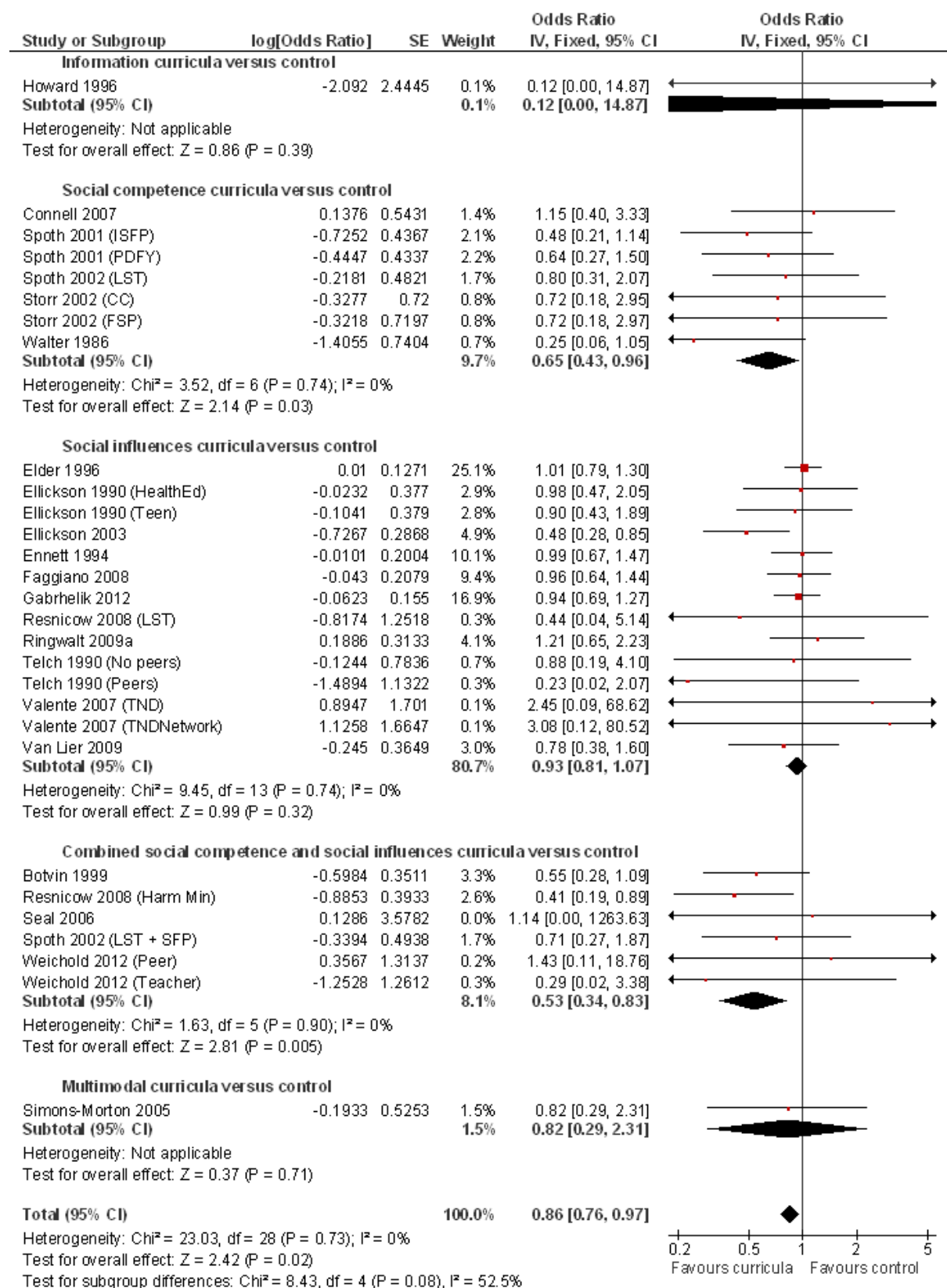
Forest plot showing results for curricula with booster sessions versus control (longest follow-up)



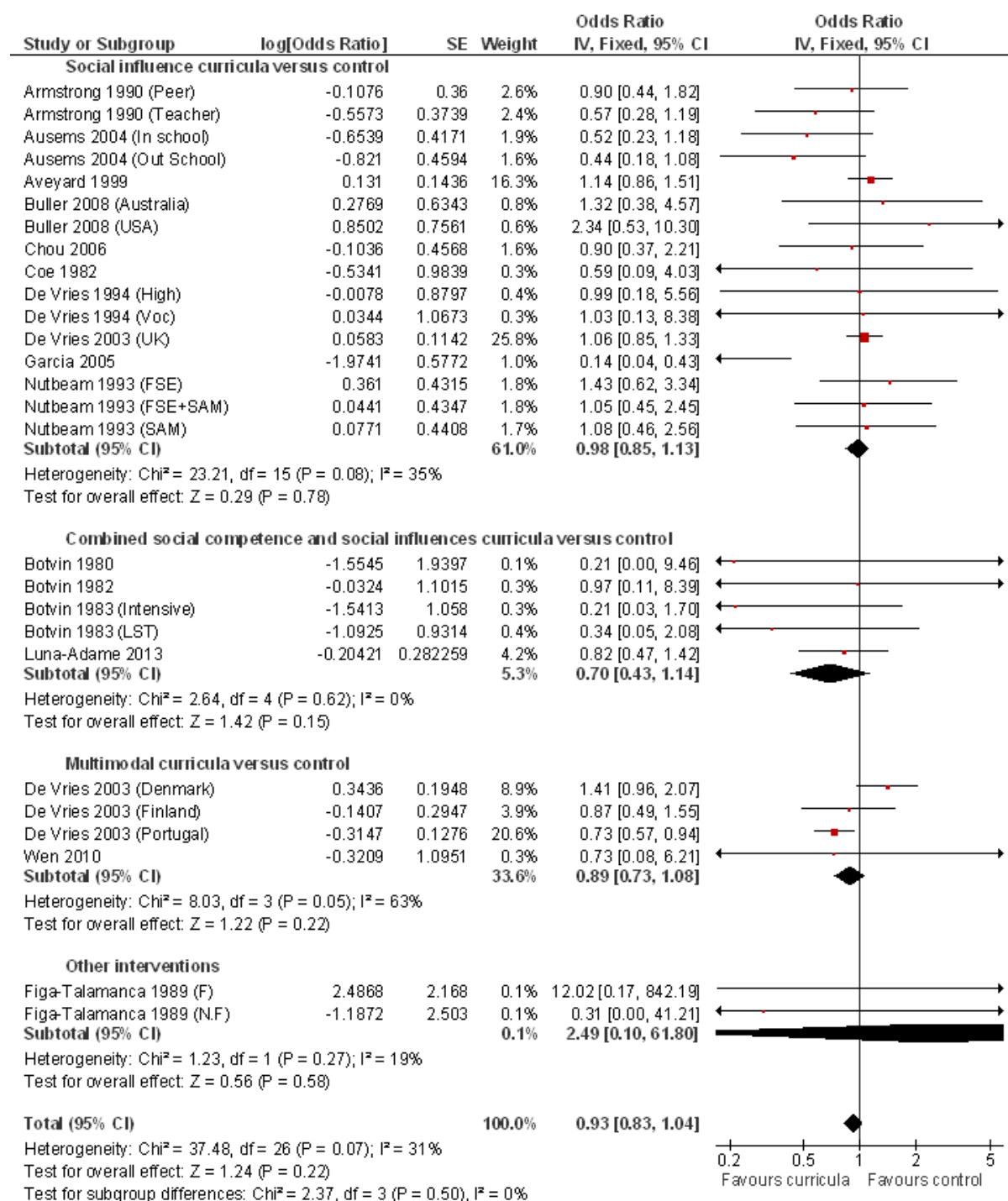
Forest plot showing results for multifocal curricula versus control (one year or less follow-up)



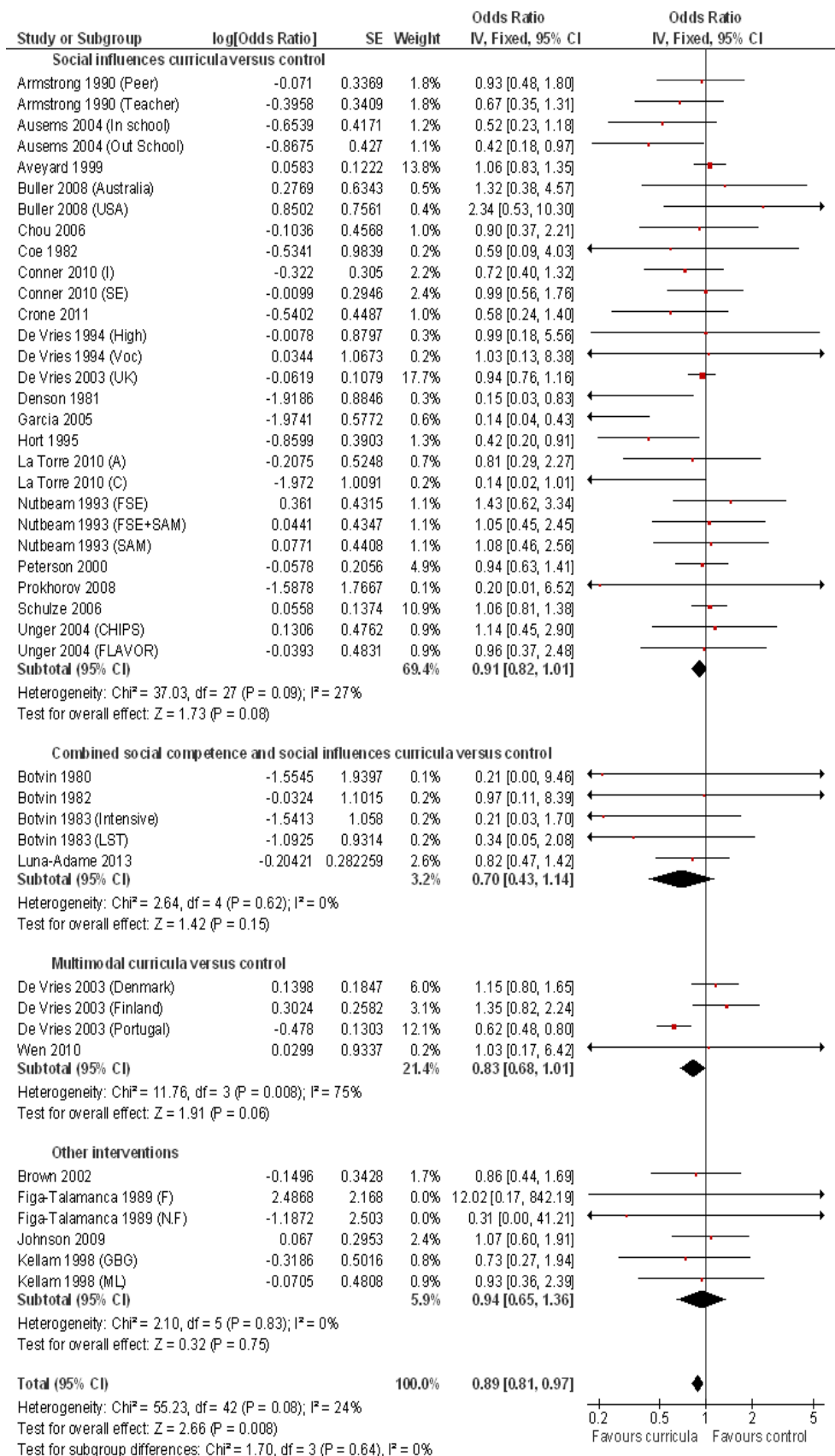
Forest plot showing results for multifocal curricula versus control (longest follow-up)



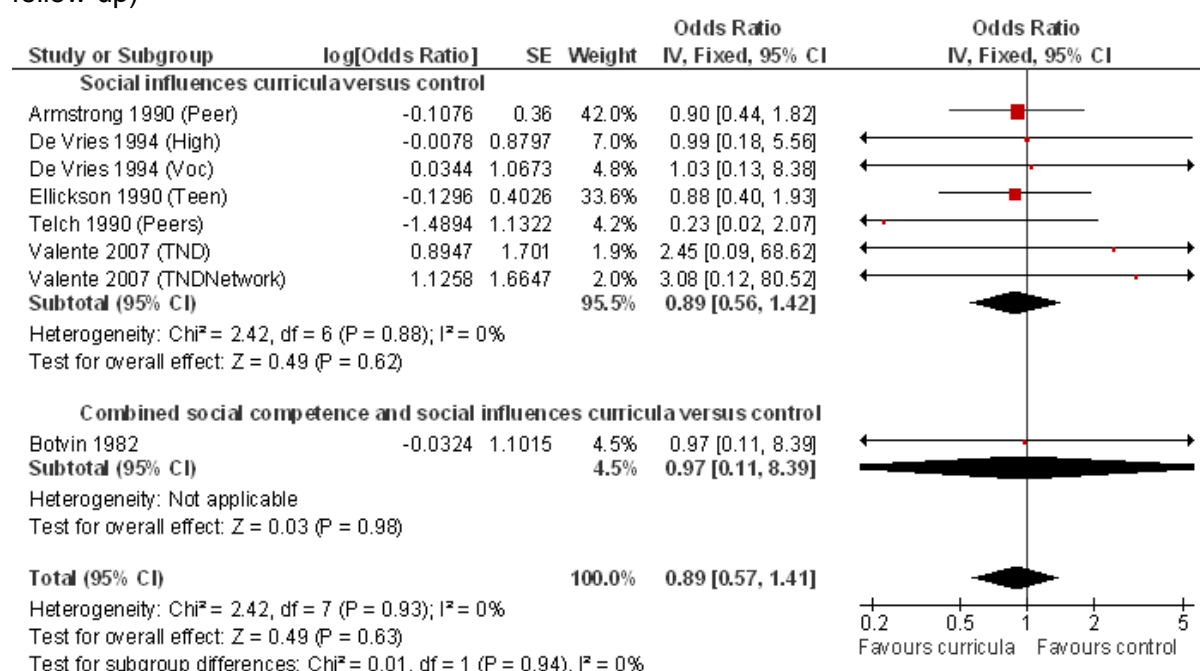
Forest plot showing results for tobacco-only curricula versus control (one year or less follow-up)



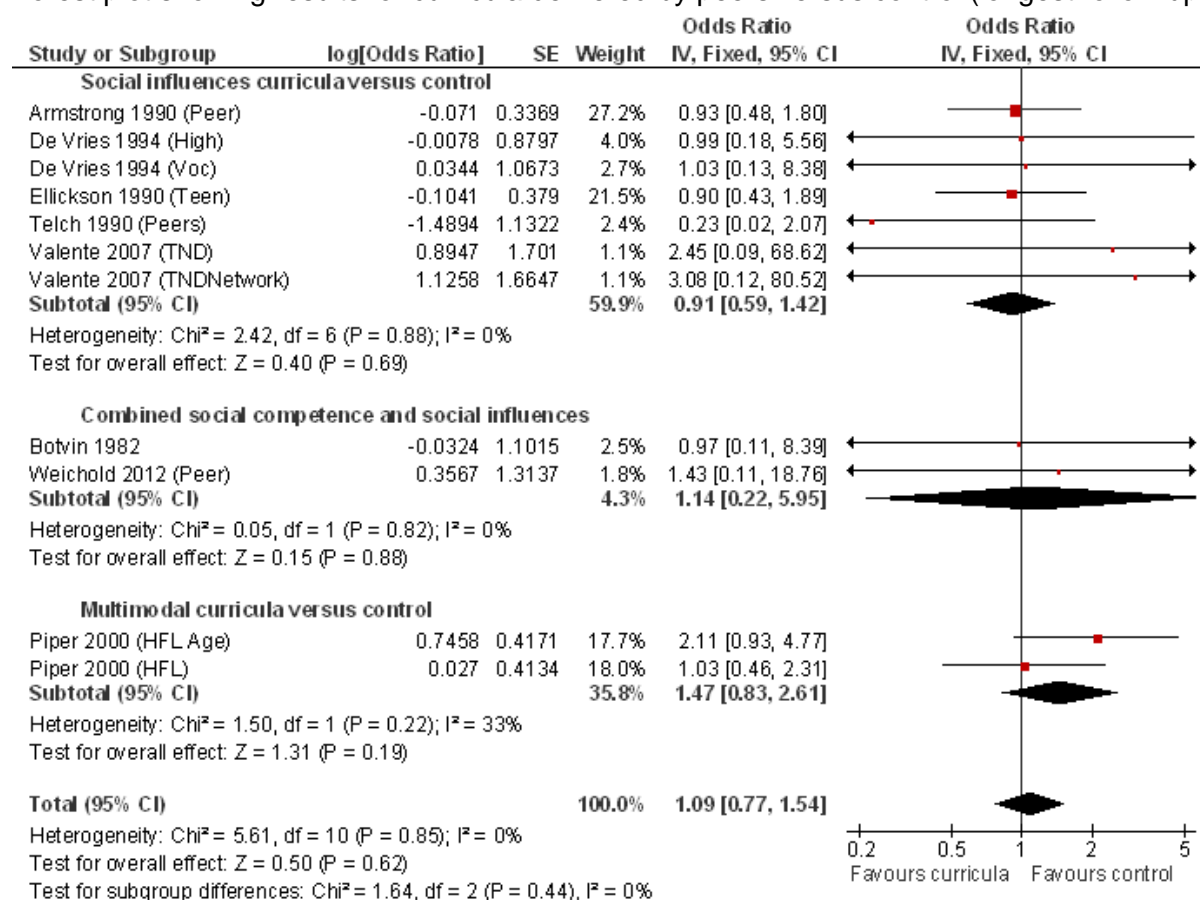
Forest plot showing results for tobacco-only curricula versus control (longest follow-up)



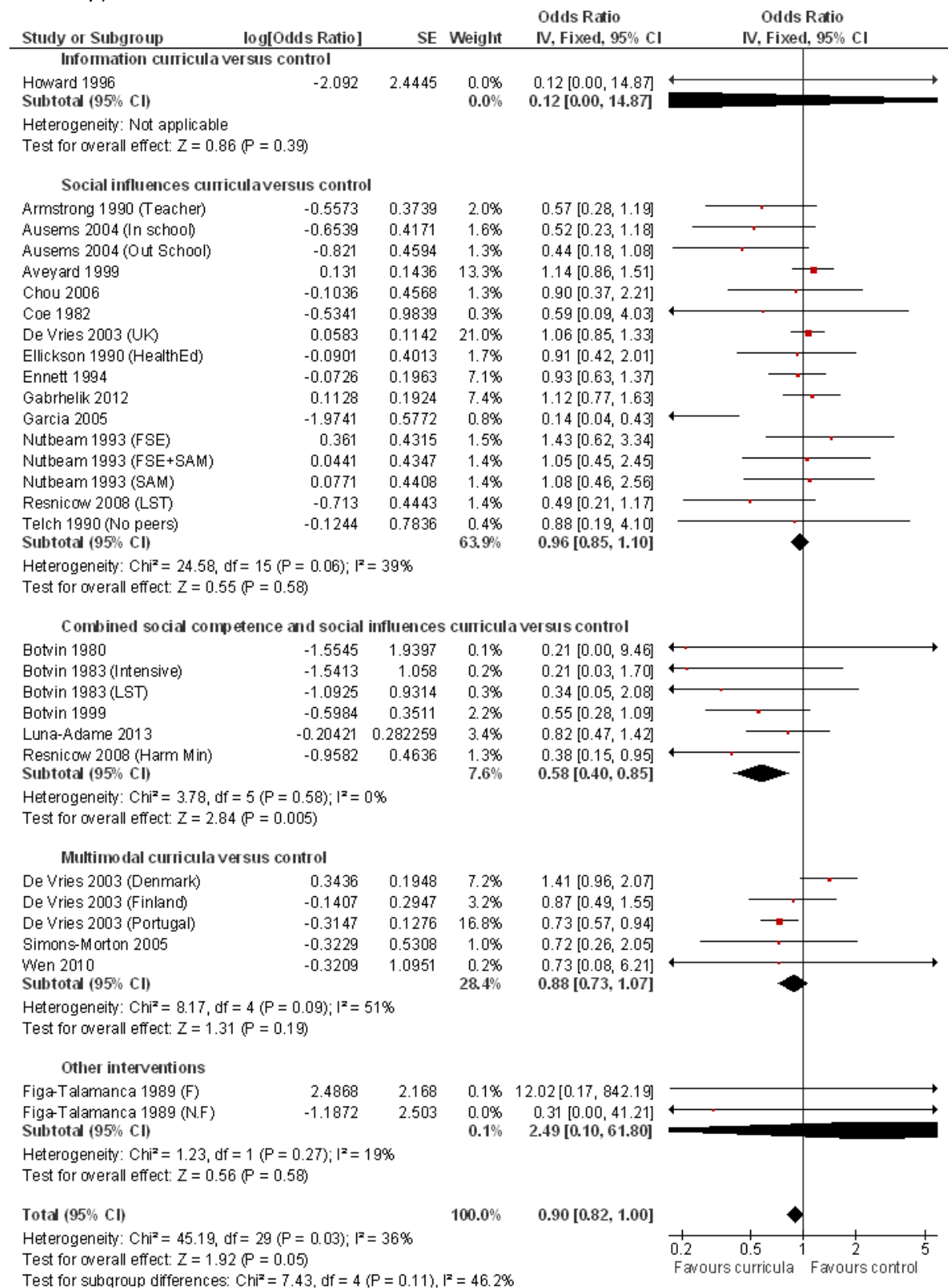
Forest plot showing results for curricula delivered by peers versus control (one year or less follow-up)



Forest plot showing results for curricula delivered by peers versus control (longest follow-up)



Forest plot showing results for curricula delivered by adults versus control (one year or less follow-up)



Forest plot showing results for curricula delivered by adults versus control (longest follow-up)

