

**Supplementary Table 1: Prevalence of smoking, by sex and birth cohort, and women-to-men smoking status prevalence ratio, by birth cohort**

	Birth cohort						
	1935-1939	1940-1944	1945-1949	1950-1954	1955-1959	1960-1964	1965-1969
<i>Current daily smokers</i>							
Women	413 (4.5)	2557 (5.1)	3861 (6.0)	3388 (6.9)	3469 (8.3)	3111 (8.7)	1881 (8.8)
Men	520 (5.8)	3247 (6.8)	4342 (8.1)	3608 (9.5)	3427 (10.7)	3242 (11.4)	2170 (11.7)
<i>Women to men prevalence ratio</i>	0.79	0.75	0.74	0.74	0.78	0.77	0.75
<i>Current occasional smokers</i>							
Women	55 (0.6)	377 (0.7)	613 (0.9)	613 (1.3)	626 (1.5)	750 (2.1)	514 (2.4)
Men	129 (1.4)	723 (1.5)	1043 (1.9)	813 (2.1)	813 (2.5)	925 (3.2)	704 (3.8)
<i>Women to men prevalence ratio</i>	0.43	0.52	0.59	0.75	0.77	0.81	0.73
<i>Previous daily smokers</i>							
Women	1969 (21.5)	12032 (23.9)	15113 (23.3)	10230 (21.0)	7322 (17.5)	5262 (14.8)	3245 (15.2)
Men	3628 (40.1)	18989 (39.8)	18104 (33.7)	10536 (27.6)	6600 (20.6)	4857 (17.0)	3087 (16.7)
<i>Women to men prevalence ratio</i>	0.54	0.60	0.69	0.76	0.85	0.87	0.91
<i>Previous occasional smokers</i>							
Women	1127 (12.3)	6736 (13.4)	8266 (12.7)	5660 (11.6)	4612 (11.0)	3655 (10.3)	2381 (11.2)
Men	1138 (12.6)	5931 (12.4)	6149 (11.5)	4058 (10.6)	3084 (9.6)	2668 (9.4)	1700 (9.2)
<i>Women to men prevalence ratio</i>	0.99	1.14	1.34	1.39	1.50	1.37	1.40
<i>Never smokers, even occasionally</i>							
Women	5578 (61.0)	28643 (56.9)	37031 (57.1)	28859 (59.2)	25810 (61.7)	22849 (64.1)	13309 (62.4)
Men	3626 (40.1)	18839 (39.5)	24023 (44.8)	19154 (50.2)	18157 (56.6)	16800 (59.0)	10878 (58.7)
<i>Women to men prevalence ratio</i>	1.54	1.52	1.54	1.51	1.42	1.36	1.22

Data are N (%)

**Supplementary Table 2: Smoking habits among current and previous smokers by sex and birth cohort, and sex difference in smoking habit, by birth**

	Birth cohort						
	1935-1939	1940-1944	1945-1949	1950-1954	1955-1959	1960-1964	1965-1969
<b>Age at which participant first started to smoke</b>							
<i>Current smokers</i>							
Women	20.3 (7.0)	19.4 (6.3)	18.6 (5.8)	18.4 (6.2)	17.7 (5.6)	17.7 (5.6)	17.6 (5.2)
Men	18.2 (6.6)	17.7 (6.0)	17.2 (5.8)	17.4 (5.5)	17.2 (5.6)	17.5 (5.6)	17.6 (5.1)

cohort

<i>Mean difference</i>	2.1 (1.2; 2.9)	1.7 (1.4; 2.0)	1.3 (1.1; 1.6)	1.0 (0.7; 1.3)	0.5 (0.2; 0.7)	0.2 (-0.1; 0.4)	0.0 (-0.4; 0.3)
<i>Previous smokers</i>							
Women	19.1 (4.5)	18.6 (4.2)	17.9 (3.7)	17.5 (3.5)	17.1 (3.6)	17.1 (3.8)	17.4 (3.7)
Men	17.3 (3.6)	17.0 (3.5)	16.7 (3.4)	16.7 (3.4)	16.6 (3.6)	17.0 (4.0)	17.1 (3.7)
<i>Mean difference</i>	1.8 (1.6; 2.0)	1.5 (1.4; 1.6)	1.1 (1.0; 1.2)	0.8 (0.7; 0.9)	0.5 (0.4; 0.6)	0.2 (0.0; 0.3)	0.2 (0.1; 0.4)
<b>Cigarettes smoked per day</b>							
<i>Current smokers</i>							
Women	13.6 (6.8)	14.1 (7.3)	14.2 (7.3)	14.3 (7.3)	14.4 (7.7)	13.9 (7.5)	13.0 (6.8)
Men	16.0 (7.4)	16.8 (9.0)	17.6 (9.1)	17.6 (9.4)	17.8 (9.7)	16.6 (9.1)	15.5 (8.7)
<i>Mean difference</i>	-2.3 (-3.3; -1.3)	-2.7 (-3.2; -2.2)	-3.4 (-3.8; -3.1)	-3.3 (-3.7; -2.8)	-3.3 (-3.7; -2.9)	-2.7 (-3.1; -2.3)	-2.5 (-3.0; -2.0)
<i>Previous smokers</i>							
Women	16.6 (8.8)	16.5 (8.8)	17.1 (8.7)	17.2 (8.3)	16.8 (8.1)	16.0 (8.0)	15.0 (7.7)
Men	22.0 (12.6)	22.3 (12.5)	21.9 (11.9)	21.3 (11.2)	20.1 (10.3)	18.7 (10.1)	16.8 (8.7)
<i>Mean difference</i>	-5.4 (-6.1; -4.8)	-5.8 (-6.1; -5.6)	-4.8 (-5.1; -4.6)	-4.1 (-4.4; -3.8)	-3.4 (-3.7; -3.0)	-2.7 (-3.0; -2.3)	-1.8 (-2.2; -1.4)
<b>Age at which participant stopped smoking</b>							
<i>Previous smokers</i>							
Women	46.6 (12.8)	44.5 (12.3)	40.7 (11.9)	37.9 (10.9)	36.1 (9.7)	34.8 (7.8)	33.3 (6.3)
Men	45.0 (12.8)	43.1 (12.4)	40.4 (11.8)	38.4 (10.9)	36.8 (9.6)	35.8 (7.7)	33.7 (6.2)
<i>Mean difference</i>	1.6 (0.9; 2.3)	1.4 (1.1; 1.7)	0.3 (0.0; 0.5)	-0.5 (-0.8; -0.2)	-0.7 (-1.1; -0.4)	-1.0 (-1.3; -0.7)	-0.4 (-0.7; -0.1)

Age is in years. Data are N (%) for categorical variables, and mean (standard deviation) for continuous variables in women and men. Mean difference are women minus men differences (95% confidence interval).

**Supplementary Table 3: Differences in smoking habits between socioeconomic group, by sex**

	Socioeconomic group				
	SES 1	SES 2	SES 3	SES 4	SES 5
<b>Smoking status</b>					
Women					
Never	Reference	0.96	0.91	0.85	0.77
Previous	Reference	1.11	1.21	1.30	1.34
Current	Reference	1.35	1.89	2.70	4.09
Men					
Never	Reference	0.96	0.92	0.86	0.77
Previous	Reference	1.03	1.05	1.05	1.01
Current	Reference	1.34	1.79	2.60	3.98
<b>Age at which participant first started to smoke</b>					
Women	Reference	-0.3 (-0.6; 0.0)	-0.4 (-0.7; -0.1)	-0.6 (-0.9; -0.3)	-0.9 (-1.2; -0.6)
Men	Reference	0.1 (-0.2; 0.3)	-0.3 (-0.6; 0.0)	-0.3 (-0.5; 0.0)	-0.7 (-1.0; -0.5)
<b>Cigarettes smoked per day</b>					
Women	Reference	0.7 (0.4; 1.1)	1.0 (0.7; 1.4)	1.8 (1.5; 2.2)	2.6 (2.3; 2.9)
Men	Reference	0.4 (-0.1; 0.8)	0.8 (0.3; 1.2)	1.8 (1.3; 2.2)	3.1 (2.7; 3.5)
<b>Age at which participant stopped smoking</b>					
Women	Reference	1.2 (1.0; 1.5)	2.3 (2.1; 2.6)	3.6 (3.3; 3.8)	5.7 (5.3; 6.0)
Men	Reference	0.9 (0.7; 1.2)	1.8 (1.5; 2.0)	3.2 (2.9; 3.4)	4.7 (4.4; 5.0)

Based on data presented in Table 2. Values are ratios for categorical variables and age-adjusted mean differences (95% confidence interval) for continuous variables. Socioeconomic status (SES) was measured by the Townsend material deprivation score, thresholds for five SES groups were -3.13, -1.53, 0.57 and, 3.24.

**Supplementary Table 4: Smoking characteristics and women-to-men mean difference in smoking characteristics in SES 1 (most affluent)**

	Birth cohort						
	1935-1939	1940-1944	1945-1949	1950-1954	1955-1959	1960-1964	1965-1969
<b>N</b>							
Women	3254	18143	23158	16825	13484	10650	5816
Men	3430	17540	19505	13025	10082	8375	4931
<b>Smoking status</b>							
<i>Current smokers</i>							
Women	77 (2.4)	589 (3.2)	791 (3.4)	651 (3.9)	606 (4.5)	514 (4.8)	258 (4.4)
Men	137 (4.0)	753 (4.3)	941 (4.8)	655 (5.0)	606 (6.0)	514 (6.1)	303 (6.1)
<i>Previous smokers</i>							
Women	588 (18.1)	3762 (20.7)	4745 (20.5)	3070 (18.2)	2078 (15.4)	1277 (12.0)	704 (12.1)
Men	1304 (38.0)	6722 (38.3)	6313 (32.4)	3441 (26.4)	1879 (18.6)	1271 (15.2)	748 (15.2)
<i>Never smokers</i>							
Women	2589 (79.6)	13792 (76.0)	17622 (76.1)	13104 (77.9)	10800 (80.1)	8859 (83.2)	4854 (83.5)
Men	1989 (58.0)	10065 (57.4)	12251 (62.8)	8929 (68.6)	7597 (75.4)	6590 (78.7)	3880 (78.7)
<b>Age at which participant first started to smoke</b>							
Women	19.5 (5.1)	18.7 (4.2)	18.0 (3.8)	17.8 (4.5)	17.2 (3.7)	17.4 (3.9)	17.3 (3.6)
Men	17.7 (4.1)	17.3 (3.6)	17.0 (3.5)	16.9 (3.5)	16.8 (3.9)	17.2 (4.0)	17.3 (4.0)
<i>Mean difference</i>	1.8 (1.4; 2.2)	1.4 (1.3; 1.6)	1.1 (1.0; 1.2)	0.9 (0.7; 1.1)	0.4 (0.2; 0.6)	0.3 (0.0; 0.5)	0.1 (-0.3; 0.4)
<b>Cigarettes smoked per day</b>							
Women	14.9 (8.1)	15.2 (8.1)	15.6 (7.9)	16.0 (7.7)	15.4 (7.2)	14.6 (7.0)	13.3 (6.5)
Men	20.7 (11.9)	20.6 (11.3)	20.3 (10.7)	19.8 (10.1)	18.8 (9.3)	16.9 (8.3)	15.9 (7.8)
<i>Mean difference</i>	-5.8 (-6.8; -4.8)	-5.4 (-5.8; -5.0)	-4.7 (-5.0; -4.4)	-3.8 (-4.2; -3.4)	-3.4 (-3.9; -2.9)	-2.4 (-2.9; -1.9)	-2.6 (-3.2; -2.0)
<b>Age at which participant stopped smoking</b>							
Women	44.9 (13.0)	42.6 (12.0)	38.5 (11.5)	35.8 (10.5)	34.1 (9.6)	33.3 (7.8)	32.0 (6.3)
Men	43.7 (12.6)	41.6 (12.1)	38.8 (11.4)	36.6 (10.6)	35.2 (9.6)	34.6 (7.8)	32.9 (6.4)
<i>Mean difference</i>	1.1 (-0.1; 2.4)	1.0 (0.5; 1.5)	-0.3 (-0.8; 0.1)	-0.8 (-1.3; -0.3)	-1.2 (-1.8; -0.6)	-1.3 (-1.9; -0.7)	-0.9 (-1.5; -0.2)

Age is in years. Data are N (%) for categorical variables, and mean (standard deviation) for continuous variables in women and men. Mean difference are women minus men differences (95% confidence interval). Data on age at smoking initiation, cigarettes smoked per day, and age at which participant stopped smoking are for current and previous smokers combined.

Socioeconomic status (SES) was measured by the Townsend material deprivation score, thresholds for five SES groups were -3.13, -1.53, 0.57 and, 3.24.

**Supplementary Table 5: Smoking characteristics and women-to-men mean difference in smoking characteristics in SES 2 (affluent)**

	Birth cohort						
	1935-1939	1940-1944	1945-1949	1950-1954	1955-1959	1960-1964	1965-1969
<b>N</b>							
Women	2297	12830	16362	11807	9808	8048	4532
Men	2254	12068	13125	9013	7230	6062	3904
<b>Smoking status</b>							
<i>Current smokers</i>							
Women	96 (4.2)	485 (3.8)	782 (4.8)	627 (5.3)	604 (6.2)	511 (6.3)	292 (6.4)
Men	104 (4.6)	678 (5.6)	869 (6.6)	645 (7.2)	542 (7.5)	482 (8.0)	325 (8.3)
<i>Previous smokers</i>							
Women	474 (20.6)	2921 (22.8)	3689 (22.5)	2419 (20.5)	1599 (16.3)	1177 (14.6)	677 (14.9)
Men	876 (38.9)	4721 (39.1)	4372 (33.3)	2493 (27.7)	1494 (20.7)	1026 (16.9)	672 (17.2)
<i>Never smokers</i>							
Women	1727 (75.2)	9424 (73.5)	11891 (72.7)	8761 (74.2)	7605 (77.5)	6360 (79.0)	3563 (78.6)
Men	1274 (56.5)	6669 (55.3)	7884 (60.1)	5875 (65.2)	5194 (71.8)	4554 (75.1)	2907 (74.5)
<b>Age at which participant first started to smoke</b>							
Women	19.5 (4.8)	18.7 (4.5)	17.9 (4.0)	17.6 (3.7)	17.4 (4.5)	17.6 (4.7)	17.6 (4.1)
Men	17.5 (3.9)	17.1 (3.7)	16.8 (3.8)	16.9 (4.0)	16.8 (4.1)	17.1 (4.4)	17.3 (3.9)
<i>Mean difference</i>	2.0 (1.6; 2.5)	1.6 (1.4; 1.7)	1.1 (1.0; 1.3)	0.7 (0.5; 0.9)	0.6 (0.3; 0.8)	0.5 (0.2; 0.8)	0.3 (0.0; 0.7)
<b>Cigarettes smoked per day</b>							
Women	15.2 (8.0)	15.3 (7.8)	16.2 (8.5)	16.3 (8.0)	15.6 (7.6)	15.1 (7.9)	13.8 (7.0)
Men	21.0 (11.9)	21.1 (11.6)	20.8 (10.9)	19.8 (10.0)	18.9 (9.3)	17.6 (8.4)	15.8 (8.3)
<i>Mean difference</i>	-5.8 (-6.9; -4.7)	-5.7 (-6.2; -5.3)	-4.6 (-5.0; -4.2)	-3.5 (-4.0; -3.1)	-3.4 (-3.9; -2.8)	-2.5 (-3.1; -1.9)	-2.0 (-2.7; -1.3)
<b>Age at which participant stopped smoking</b>							
Women	45.8 (12.3)	43.9 (12.3)	39.8 (11.8)	36.9 (10.6)	35.4 (9.7)	34.2 (7.9)	32.9 (6.4)
Men	44.1 (12.6)	42.6 (12.4)	39.9 (11.7)	37.6 (10.9)	36.1 (9.5)	35.2 (7.8)	33.6 (6.1)
<i>Mean difference</i>	1.7 (0.3; 3.1)	1.3 (0.7; 1.9)	-0.1 (-0.6; 0.4)	-0.6 (-1.2; 0.0)	-0.7 (-1.4; 0.0)	-1.1 (-1.7; -0.4)	-0.8 (-1.4; -0.1)

Age is in years. Data are N (%) for categorical variables, and mean (standard deviation) for continuous variables in women and men. Mean difference are women minus men differences (95% confidence interval). Data on age at smoking initiation, cigarettes smoked per day, and age at which participant stopped smoking are for current and previous smokers combined.

Socioeconomic status (SES) was measured by the Townsend material deprivation score, thresholds for five SES groups were -3.13, -1.53, 0.57 and, 3.24.

**Supplementary Table 6: Smoking characteristics and women-to-men mean difference in smoking characteristics in SES 3**

	Birth cohort						
	1935-1939	1940-1944	1945-1949	1950-1954	1955-1959	1960-1964	1965-1969
<b>N</b>							
Women	1560	8503	11380	8700	7652	6722	4083
Men	1392	7815	8946	6656	5759	5155	3614
<b>Smoking status</b>							
<i>Current smokers</i>							
Women	75 (4.8)	473 (5.6)	728 (6.4)	648 (7.4)	662 (8.7)	559 (8.3)	367 (9.0)
Men	87 (6.3)	559 (7.2)	761 (8.5)	584 (8.8)	611 (10.6)	551 (10.7)	424 (11.7)
<i>Previous smokers</i>							
Women	348 (22.3)	2189 (25.7)	2761 (24.3)	1962 (22.6)	1442 (18.8)	1064 (15.8)	674 (16.5)
Men	595 (42.7)	3202 (41.0)	3064 (34.2)	1939 (29.1)	1213 (21.1)	946 (18.4)	637 (17.6)
<i>Never smokers</i>							
Women	1137 (72.9)	5841 (68.7)	7891 (69.3)	6090 (70.0)	5548 (72.5)	5099 (75.9)	3042 (74.5)
Men	710 (51.0)	4054 (51.9)	5121 (57.2)	4133 (62.1)	3935 (68.3)	3658 (71.0)	2553 (70.6)
<b>Age at which participant first started to smoke</b>							
Women	19.2 (5.5)	18.7 (4.6)	18.1 (4.4)	17.7 (4.5)	17.4 (4.6)	17.4 (4.5)	17.6 (4.4)
Men	17.1 (3.8)	17.1 (4.1)	16.8 (4.0)	16.7 (3.8)	16.7 (4.2)	17.3 (4.6)	17.2 (4.0)
<i>Mean difference</i>	2.1 (1.6; 2.7)	1.6 (1.4; 1.8)	1.3 (1.1; 1.5)	1.0 (0.8; 1.3)	0.7 (0.4; 1.0)	0.1 (-0.2; 0.5)	0.3 (0.0; 0.7)
<b>Cigarettes smoked per day</b>							
Women	16.7 (9.4)	16.4 (8.6)	16.7 (8.3)	16.4 (8.0)	15.9 (8.0)	15.3 (7.8)	14.3 (7.6)
Men	21.4 (12.6)	21.8 (11.9)	21.1 (11.1)	20.0 (10.4)	19.3 (9.9)	17.6 (9.6)	15.9 (8.5)
<i>Mean difference</i>	-4.7 (-6.1; -3.3)	-5.5 (-6.0; -4.9)	-4.5 (-4.9; -4.0)	-3.6 (-4.2; -3.1)	-3.4 (-4.0; -2.8)	-2.3 (-2.9; -1.7)	-1.6 (-2.3; -0.9)
<b>Age at which participant stopped smoking</b>							
Women	46.5 (12.3)	44.9 (12.3)	41.0 (11.7)	38.4 (10.9)	36.5 (9.5)	35.1 (7.7)	33.4 (6.0)
Men	44.5 (13.3)	43.7 (12.3)	40.4 (11.7)	39.0 (10.8)	37.2 (9.6)	35.5 (7.6)	33.4 (6.2)
<i>Mean difference</i>	1.9 (0.2; 3.7)	1.2 (0.5; 1.8)	0.6 (0.0; 1.2)	-0.6 (-1.3; 0.0)	-0.7 (-1.4; 0.0)	-0.4 (-1.1; 0.3)	0.0 (-0.7; 0.7)

Age is in years. Data are N (%) for categorical variables, and mean (standard deviation) for continuous variables in women and men. Mean difference are women minus men differences (95% confidence interval). Data on age at smoking initiation, cigarettes smoked per day, and age at which participant stopped smoking are for current and previous smokers combined. Socioeconomic status (SES) was measured by the Townsend material deprivation score, thresholds for five SES groups were -3.13, -1.53, 0.57 and, 3.24.

**Supplementary Table 7: Smoking characteristics and women-to-men mean difference in smoking characteristics in SES 4 (deprived)**

	Birth cohort						
	1935-1939	1940-1944	1945-1949	1950-1954	1955-1959	1960-1964	1965-1969
<b>N</b>							
Women	1193	6511	8332	6666	6266	5682	3828
Men	1088	5934	6941	5237	4845	4715	3192
<b>Smoking status</b>							
<i>Current smokers</i>							
Women	82 (6.9)	502 (7.7)	762 (9.1)	696 (10.4)	744 (11.9)	707 (12.4)	476 (12.4)
Men	77 (7.1)	615 (10.4)	823 (11.9)	741 (14.1)	728 (15.0)	743 (15.8)	496 (15.5)
<i>Previous smokers</i>							
Women	312 (26.1)	1785 (27.4)	2290 (27.5)	1603 (24.1)	1286 (20.5)	974 (17.1)	670 (17.5)
Men	496 (45.6)	2503 (42.2)	2507 (36.1)	1471 (28.1)	1088 (22.5)	856 (18.2)	557 (17.4)
<i>Never smokers</i>							
Women	799 (67.0)	4224 (64.9)	5280 (63.4)	4367 (65.5)	4236 (67.6)	4001 (70.4)	2682 (70.1)
Men	515 (47.3)	2816 (47.5)	3611 (52.0)	3025 (57.8)	3029 (62.5)	3116 (66.1)	2139 (67.0)
<b>Age at which participant first started to smoke</b>							
Women	19.1 (5.2)	18.8 (5.0)	18.1 (4.5)	17.8 (4.7)	17.3 (4.3)	17.2 (4.5)	17.4 (4.6)
Men	17.2 (4.4)	17.0 (4.2)	16.8 (4.5)	16.9 (4.2)	17.1 (4.9)	17.3 (5.0)	17.4 (4.8)
<i>Mean difference</i>	1.9 (1.2; 2.5)	1.8 (1.5; 2.0)	1.2 (1.0; 1.5)	0.9 (0.7; 1.2)	0.2 (-0.1; 0.5)	-0.1 (-0.4; 0.2)	0.0 (-0.4; 0.4)
<b>Cigarettes smoked per day</b>							
Women	17.2 (9.0)	16.9 (8.9)	17.2 (9.0)	16.8 (8.1)	16.6 (8.5)	15.5 (8.2)	14.6 (7.9)
Men	22.1 (12.5)	23.0 (13.7)	22.0 (12.5)	21.1 (11.9)	19.6 (10.6)	18.2 (9.8)	16.2 (8.9)
<i>Mean difference</i>	-4.9 (-6.4; -3.4)	-6.1 (-6.8; -5.5)	-4.8 (-5.3; -4.2)	-4.3 (-4.9; -3.7)	-3.0 (-3.7; -2.4)	-2.7 (-3.4; -2.1)	-1.6 (-2.3; -0.9)
<b>Age at which participant stopped smoking</b>							
Women	48.1 (13.0)	46.2 (12.5)	42.8 (11.9)	39.9 (10.9)	37.3 (9.5)	35.4 (7.8)	33.8 (6.3)
Men	47.7 (12.6)	44.8 (12.4)	42.5 (12.1)	40.2 (10.9)	37.7 (9.7)	36.7 (7.5)	34.1 (6.1)
<i>Mean difference</i>	0.4 (-1.5; 2.2)	1.3 (0.6; 2.1)	0.3 (-0.4; 0.9)	-0.3 (-1.1; 0.5)	-0.4 (-1.2; 0.4)	-1.3 (-2.0; -0.6)	-0.3 (-1.0; 0.4)

Age is in years. Data are N (%) for categorical variables, and mean (standard deviation) for continuous variables in women and men. Mean difference are women minus men differences (95% confidence interval). Data on age at smoking initiation, cigarettes smoked per day, and age at which participant stopped smoking are for current and previous smokers combined.

Socioeconomic status (SES) was measured by the Townsend material deprivation score, thresholds for five SES groups were -3.13, -1.53, 0.57 and, 3.24.



**Supplementary Table 8: Smoking characteristics and women-to-men mean difference in smoking characteristics in SES 5 (most deprived)**

	Birth cohort						
	1935-1939	1940-1944	1945-1949	1950-1954	1955-1959	1960-1964	1965-1969
<b>N</b>							
Women	830	4325	5589	4690	4568	4474	3020
Men	871	4331	5093	4187	4108	4144	2851
<b>Smoking status</b>							
<i>Current smokers</i>							
Women	83 (10.0)	505 (11.7)	793 (14.2)	761 (16.2)	850 (18.6)	816 (18.2)	478 (15.8)
Men	115 (13.2)	639 (14.8)	945 (18.6)	978 (23.4)	937 (22.8)	948 (22.9)	616 (21.6)
<i>Previous smokers</i>							
Women	246 (29.6)	1368 (31.6)	1611 (28.8)	1161 (24.8)	902 (19.7)	766 (17.1)	512 (17.0)
Men	357 (41.0)	1822 (42.1)	1831 (36.0)	1176 (28.1)	914 (22.2)	751 (18.1)	467 (16.4)
<i>Never smokers</i>							
Women	501 (60.4)	2452 (56.7)	3185 (57.0)	2768 (59.0)	2816 (61.6)	2892 (64.6)	2030 (67.2)
Men	399 (45.8)	1870 (43.2)	2317 (45.5)	2033 (48.6)	2257 (54.9)	2445 (59.0)	1768 (62.0)
<b>Age at which participant first started to smoke</b>							
Women	18.7 (4.6)	18.6 (5.4)	17.8 (4.7)	17.6 (4.7)	17.0 (4.8)	17.1 (5.0)	17.3 (4.8)
Men	16.9 (4.4)	16.9 (5.0)	16.7 (4.9)	16.9 (5.0)	16.5 (4.7)	17.2 (5.3)	17.5 (4.9)
<i>Mean difference</i>	1.8 (1.2; 2.4)	1.7 (1.4; 2.0)	1.1 (0.9; 1.4)	0.7 (0.4; 1.0)	0.4 (0.1; 0.7)	-0.1 (-0.5; 0.2)	-0.1 (-0.5; 0.3)
<b>Cigarettes smoked per day</b>							
Women	18.0 (8.5)	18.2 (10.2)	18.0 (9.2)	17.4 (9.2)	17.1 (9.2)	15.9 (8.6)	15.3 (8.0)
Men	23.1 (13.2)	23.7 (13.9)	23.0 (13.6)	21.8 (12.8)	20.4 (11.7)	19.1 (11.9)	17.4 (9.9)
<i>Mean difference</i>	-5.1 (-6.8; -3.5)	-5.5 (-6.3; -4.8)	-5.0 (-5.7; -4.4)	-4.4 (-5.1; -3.7)	-3.3 (-4.0; -2.6)	-3.1 (-3.9; -2.4)	-2.2 (-2.9; -1.4)
<b>Age at which participant stopped smoking</b>							
Women	50.5 (12.4)	48.1 (12.0)	45.3 (11.6)	41.9 (10.6)	39.4 (9.2)	36.9 (7.3)	34.9 (5.8)
Men	48.4 (12.7)	46.4 (12.6)	44.0 (12.1)	42.4 (10.7)	39.6 (9.1)	37.5 (7.3)	35.1 (6.2)
<i>Mean difference</i>	2.2 (0.1; 4.2)	1.6 (0.8; 2.5)	1.3 (0.5; 2.1)	-0.5 (-1.4; 0.4)	-0.2 (-1.1; 0.6)	-0.6 (-1.4; 0.1)	-0.2 (-1.0; 0.5)

Age is in years. Data are N (%) for categorical variables, and mean (standard deviation) for continuous variables in women and men. Mean difference are women minus men differences (95% confidence interval). Data on age at smoking initiation, cigarettes smoked per day, and age at which participant stopped smoking are for current and previous smokers combined. Socioeconomic status (SES) was measured by the Townsend material deprivation score, thresholds for five SES groups were -3.13, -1.53, 0.57 and, 3.24.

**Supplementary Table 9: Multivariable analyses on differences in smoking habits between men and women according to birth cohort and socioeconomic status**

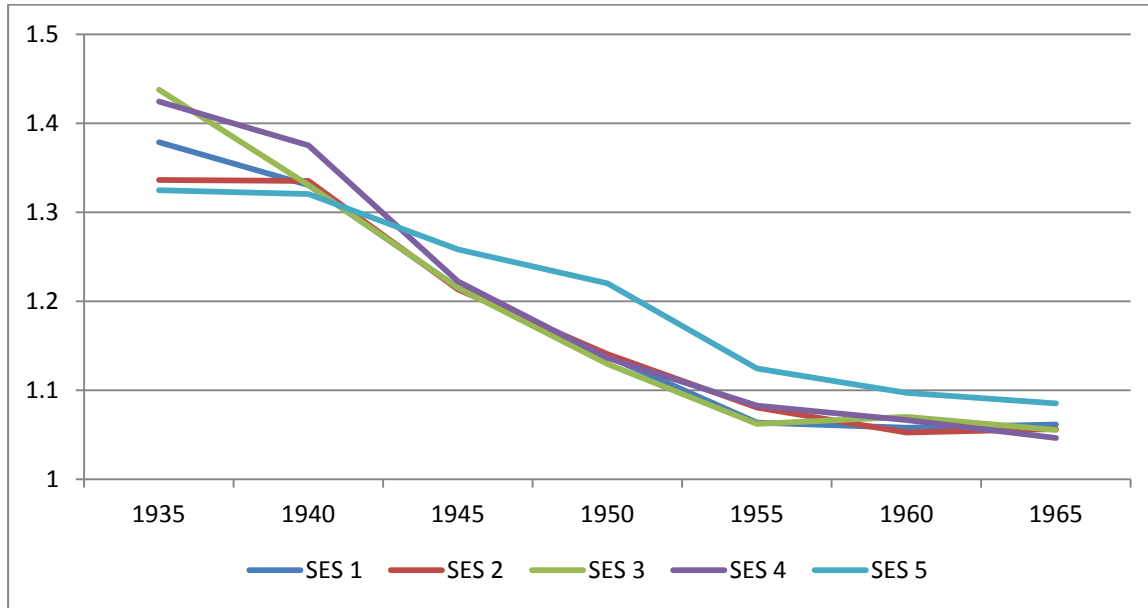
	Estimated beta coefficients*								P-value for interaction term			
	Intercept	Sex	SES	Birth cohort	Sex* SES	Sex* Birth cohort	SES* Birth cohort	Sex* SES* Birth cohort	Sex* SES	Sex* Birth cohort	SES* Birth cohort	Sex* SES* Birth cohort
<b>Smoking status</b>												
<i>Ever smokers</i>												
Women	-1.201		0.200	-0.086			0.005			0.01		
Men	-0.025		0.107	-0.241			0.019			<0.001		
<i>Women to men ratio</i>	-0.025	-1.176	0.107	-0.241	0.093	0.155	0.019	-0.014	<0.001	<0.001	<0.001	<0.001
<b>Age at which participant first started to smoke</b>												
Women	19.241		-0.058	-0.326			0.007			0.37		
Men	17.500		-0.192	-0.113			0.043			<0.001		
<i>Mean difference</i>	17.500	1.741	-0.192	-0.113	0.135	-0.212	0.043	-0.036	<0.001	<0.001	<0.001	<0.001
<b>Cigarettes smoked per day</b>												
Women	14.929		0.852	-0.058			-0.093			<0.001		
Men	21.355		0.941	-0.712			-0.099			<0.001		
<i>Mean difference</i>	21.355	-6.426	0.941	-0.712	-0.089	0.654	-0.099	0.007	0.33	<0.001	<0.001	0.77
<b>Pack years of smoking</b>												
Women	23.216		0.630	-1.793			-0.024			0.32		
Men	33.017		0.571	-3.307			0.083			0.01		
<i>Mean difference</i>	33.017	-9.800	0.571	-3.307	0.060	1.514	0.083	-0.106	0.71	<0.001	0.00	0.01
<b>Age at which participant stopped smoking</b>												
Women	44.261		1.657	-2.193			-0.090			<0.001		
Men	43.429		1.385	-1.812			-0.076			<0.001		
<i>Mean difference</i>	43.429	0.832	1.385	-1.812	0.272	-0.381	-0.076	-0.015	0.02	<0.001	0.00	0.63

SES, socioeconomic status

\* All estimated beta coefficients were derived from linear regression models, except for smoking status which was derived from logistic regression models.

Sex-specific models were specified as:  $Y = \beta_0 + \beta_1 SES + \beta_2 cohort + \beta_3 sex * cohort$ . Models assessing the ratio or difference between men and women were specified as:  $Y = \beta_0 + \beta_1 sex + \beta_2 SES + \beta_3 cohort + \beta_4 sex * SES + \beta_5 sex * cohort + \beta_6 SES * cohort + \beta_7 sex * SES * cohort$ . The reference group for sex was women; SES and cohort were fitted as ordinal variables.

Supplementary Figure 1: Women-to-men ratio of ever smoking by birth cohort and socioeconomic status



**Supplementary Figure 2: Women-to-men ratio difference in means of smoking characteristics by birth cohort and socioeconomic status**

