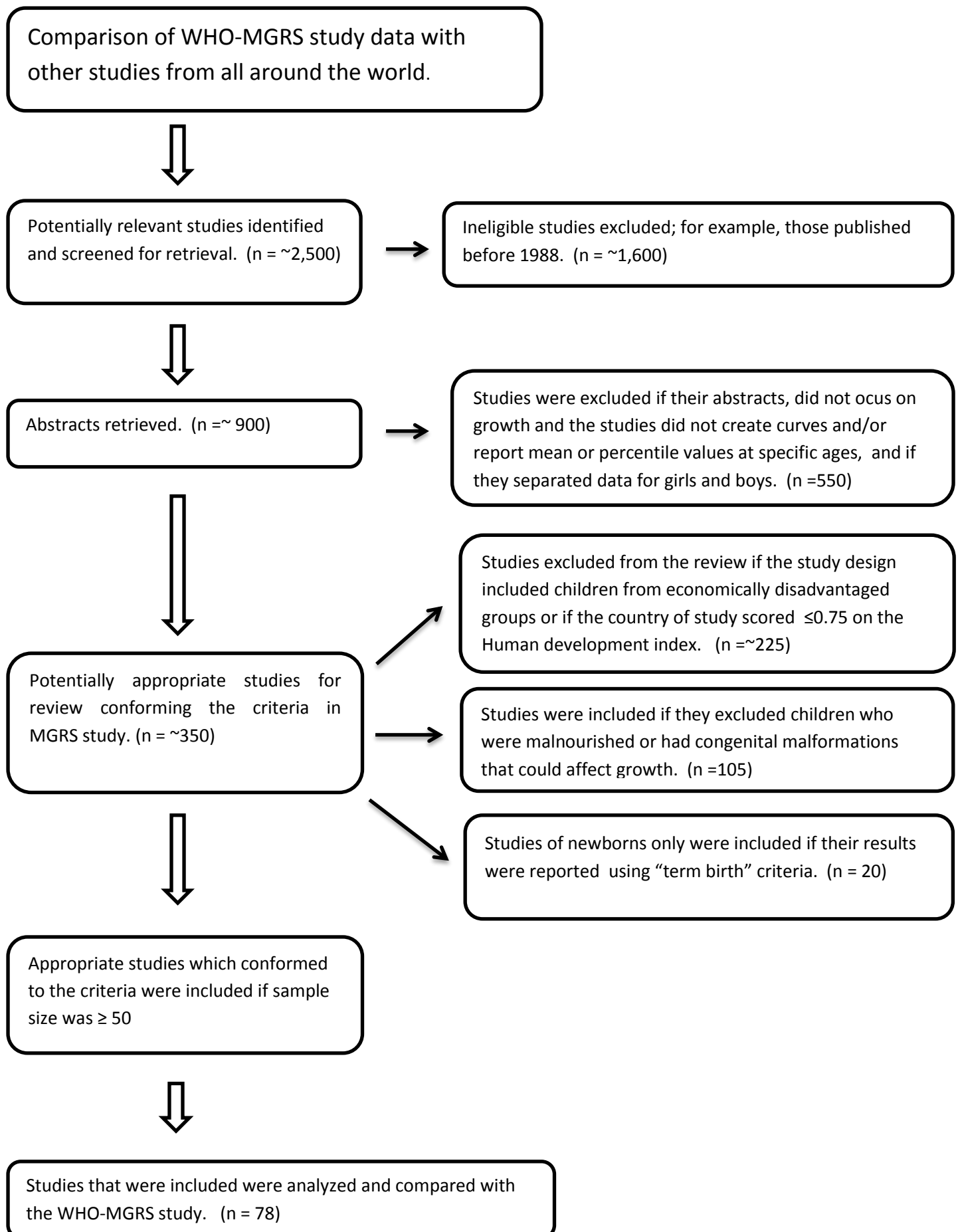
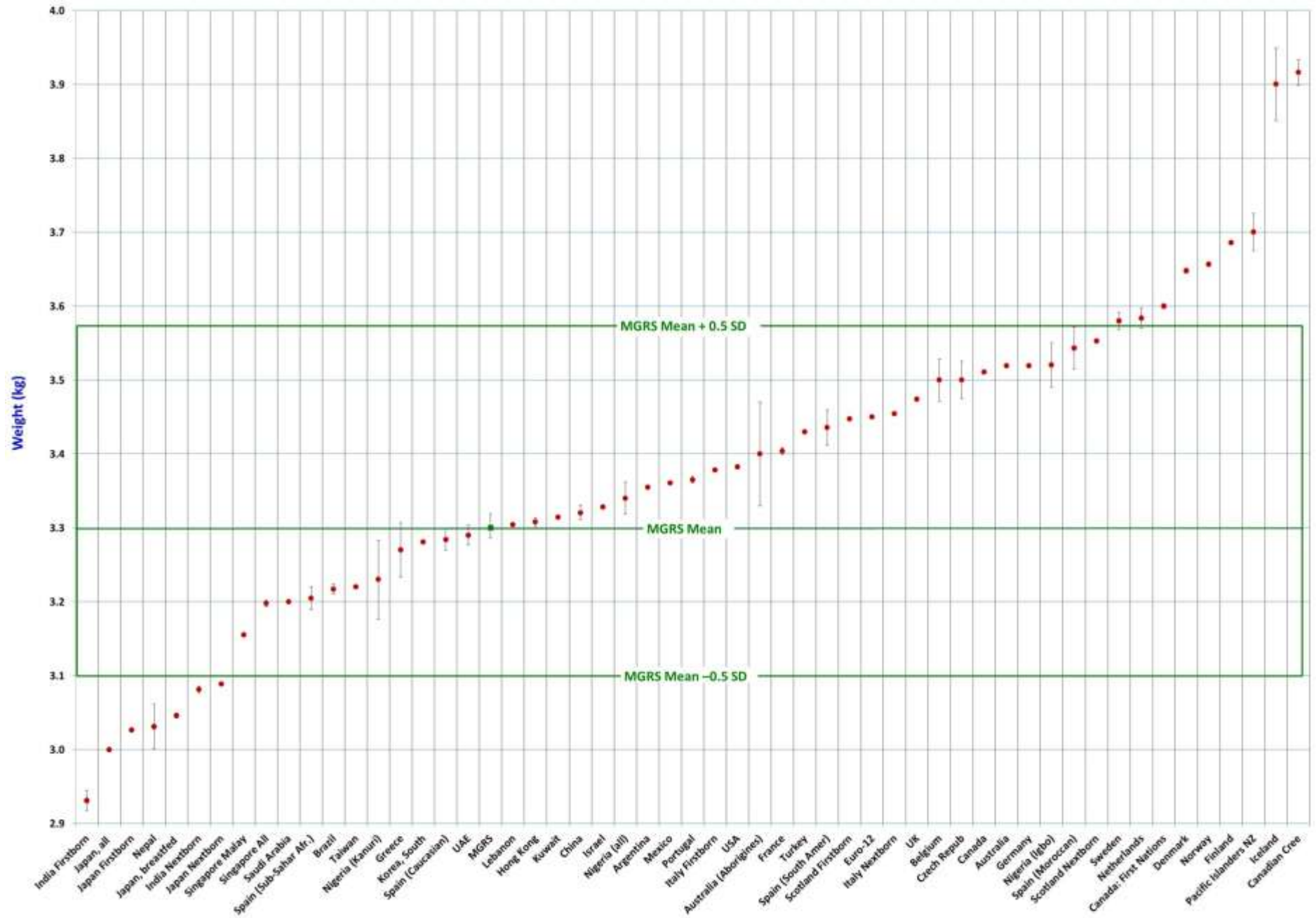


Supplemental Figure 1. Flow diagram of study selection.

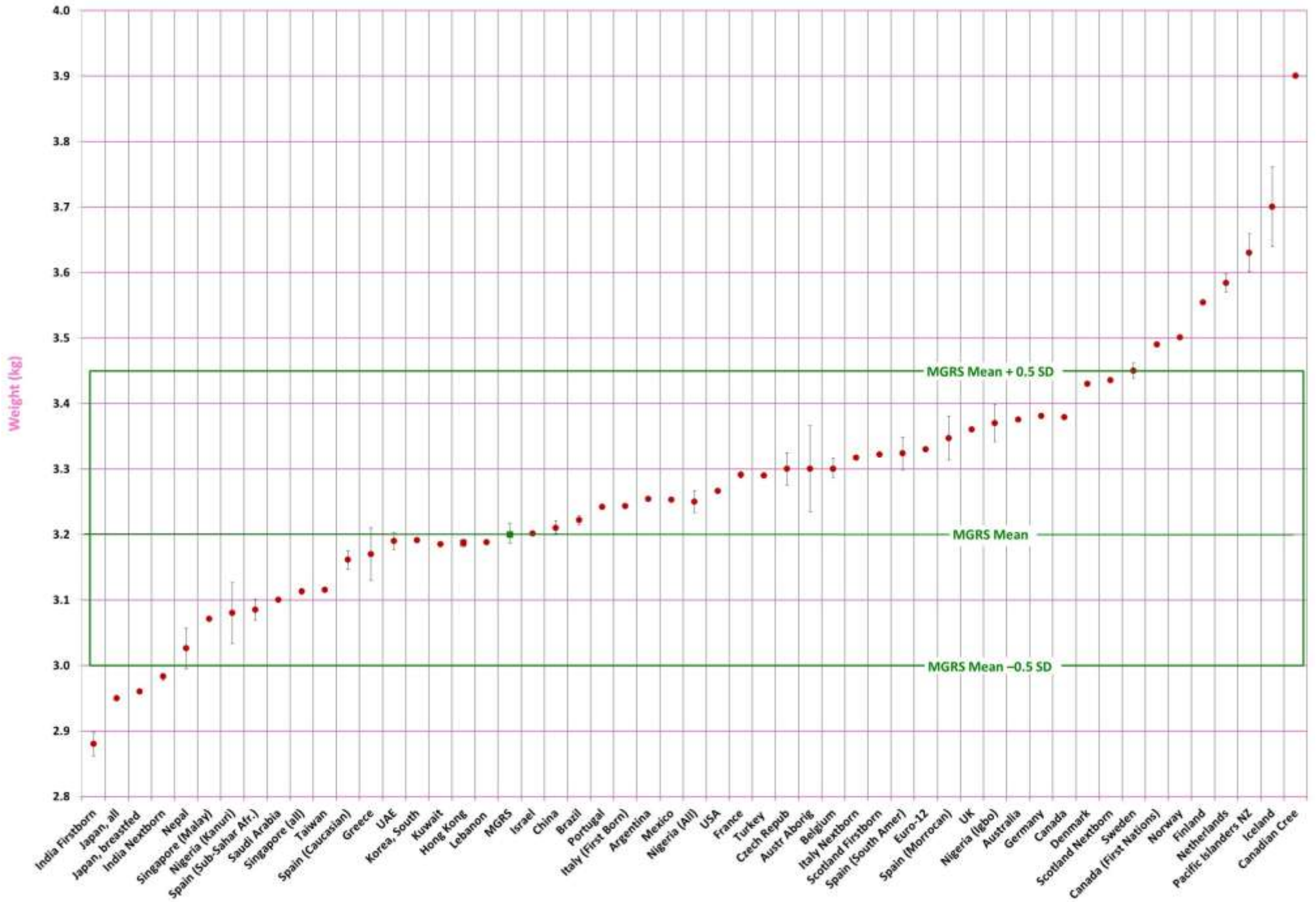


Supplemental Figure 2. Weight at birth: 54 countries vs. MGRS. The green box delimits the area within 0.5 SD of the MGRS mean. The green line in the box shows the MGRS mean. *4a. Boys.* MGRS mean: 3.3 kg; SD: 0.55 kg up; 0.40 kg down; *4b. Girls.* MGRS mean: 3.2 kg SD: 0.50 kg up; 0.40 kg down.

Supplemental Figure 2a

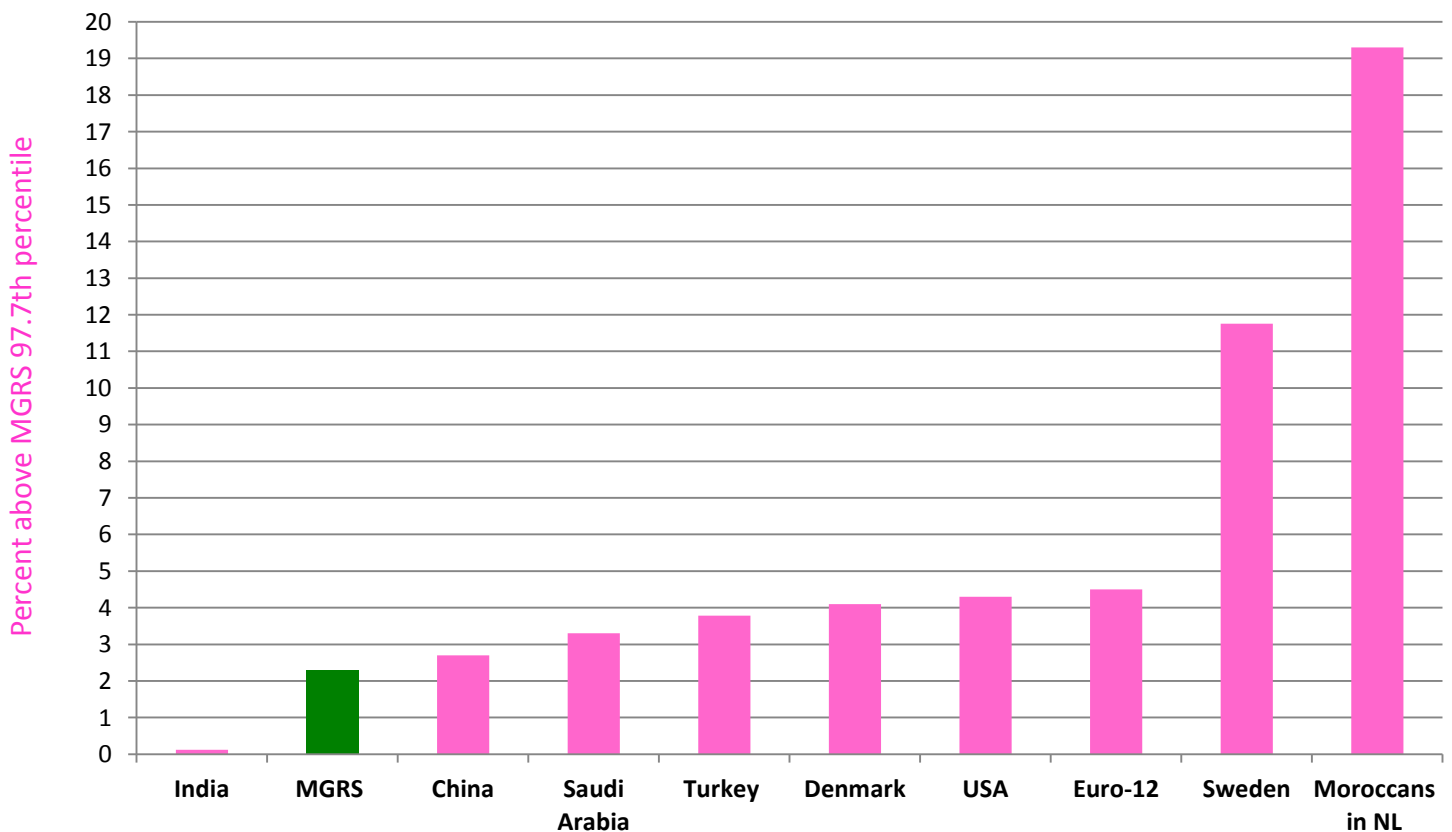
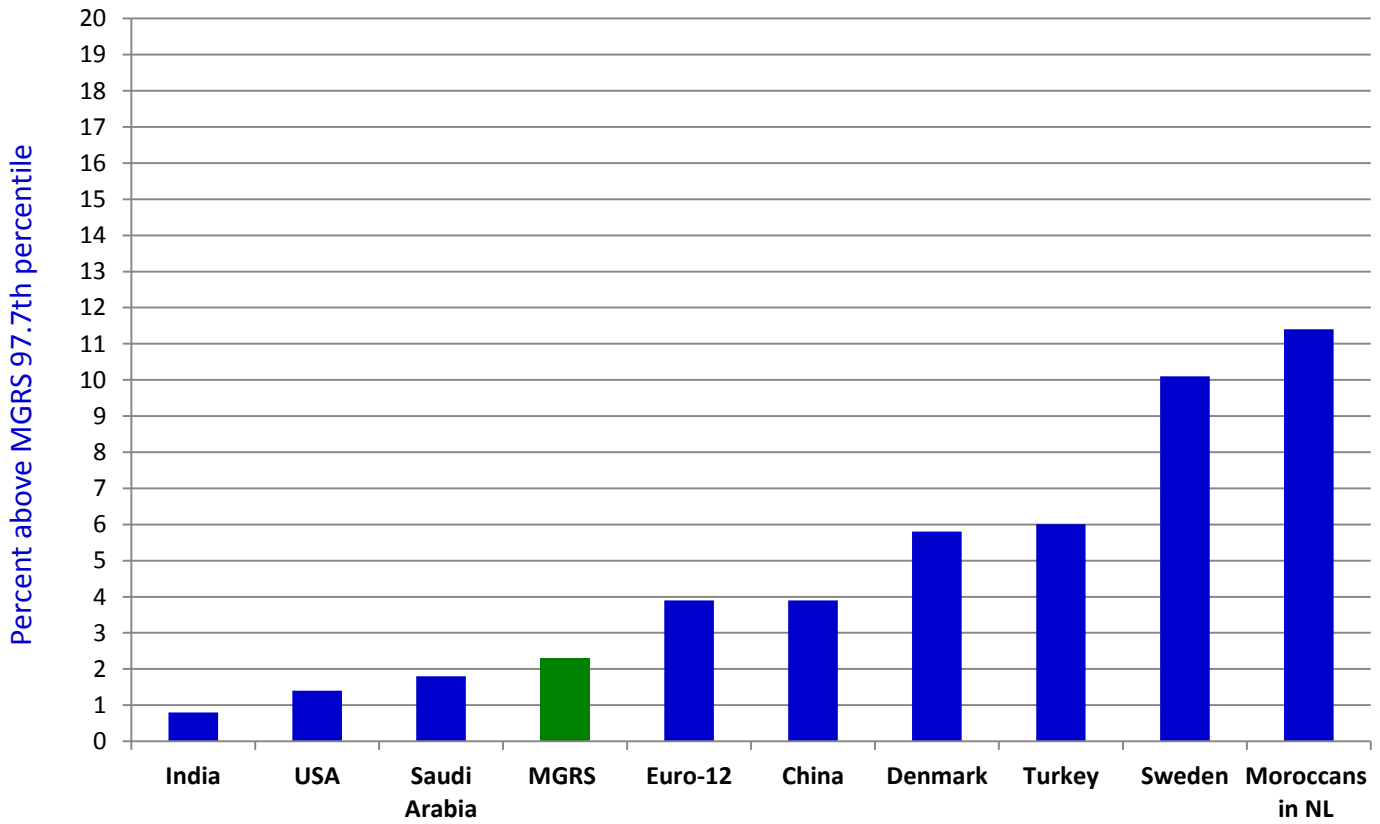


Supplemental Figure 2b

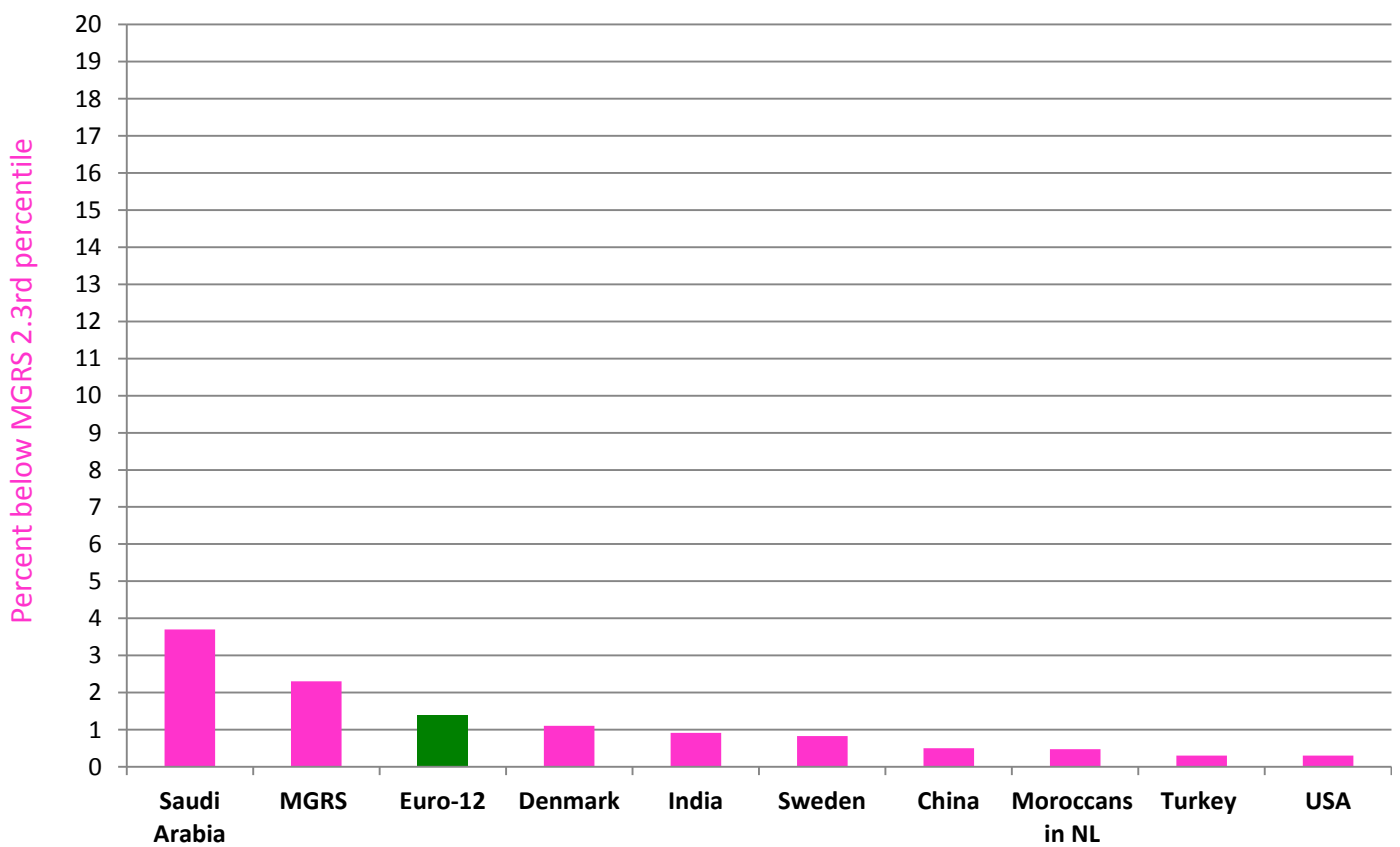
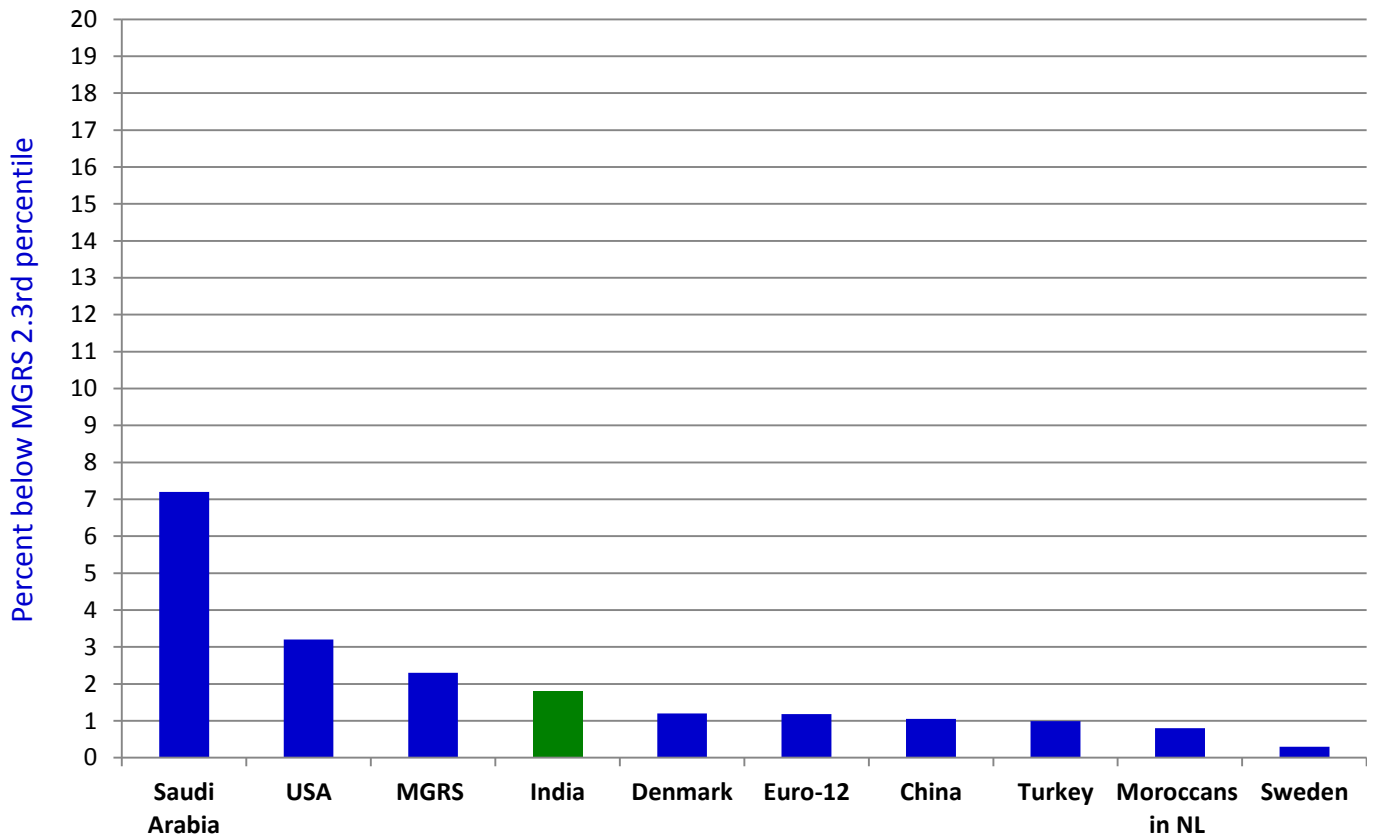


Supplemental Figure 3. Estimated percentages of extreme outliers (weight) at age 24 months. 4a. Percentage of boys (blue) or girls (pink) estimated to be above the 97.7th percentile on the MGRS curves. 4b. Percentage of boys (blue) or girls (pink) estimated to be below the 2.3rd percentile on the MGRS curves. Moroccans in NL = Moroccan people living in the Netherlands.

Supplemental Figure 3a



Supplemental Figure 3b



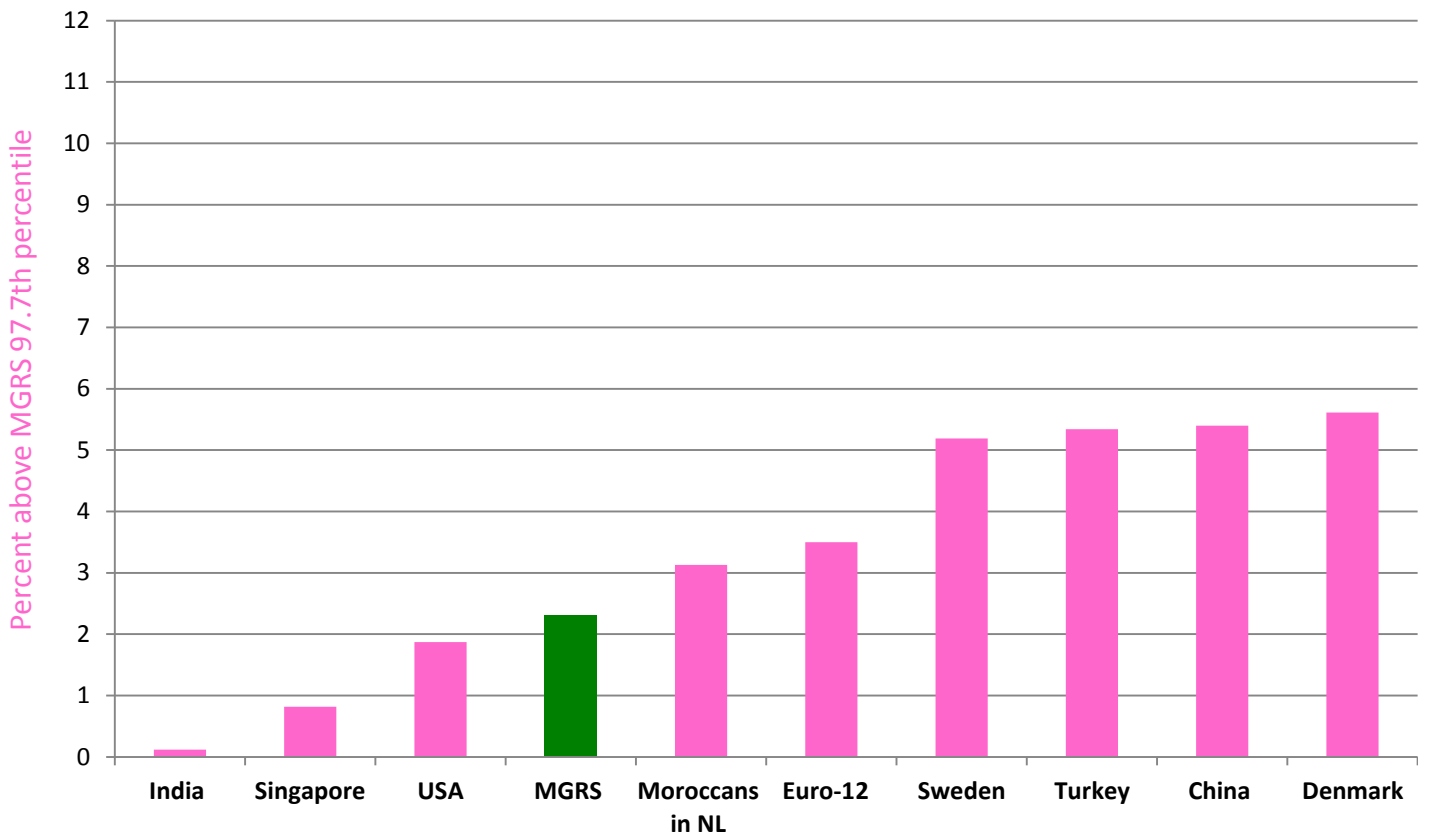
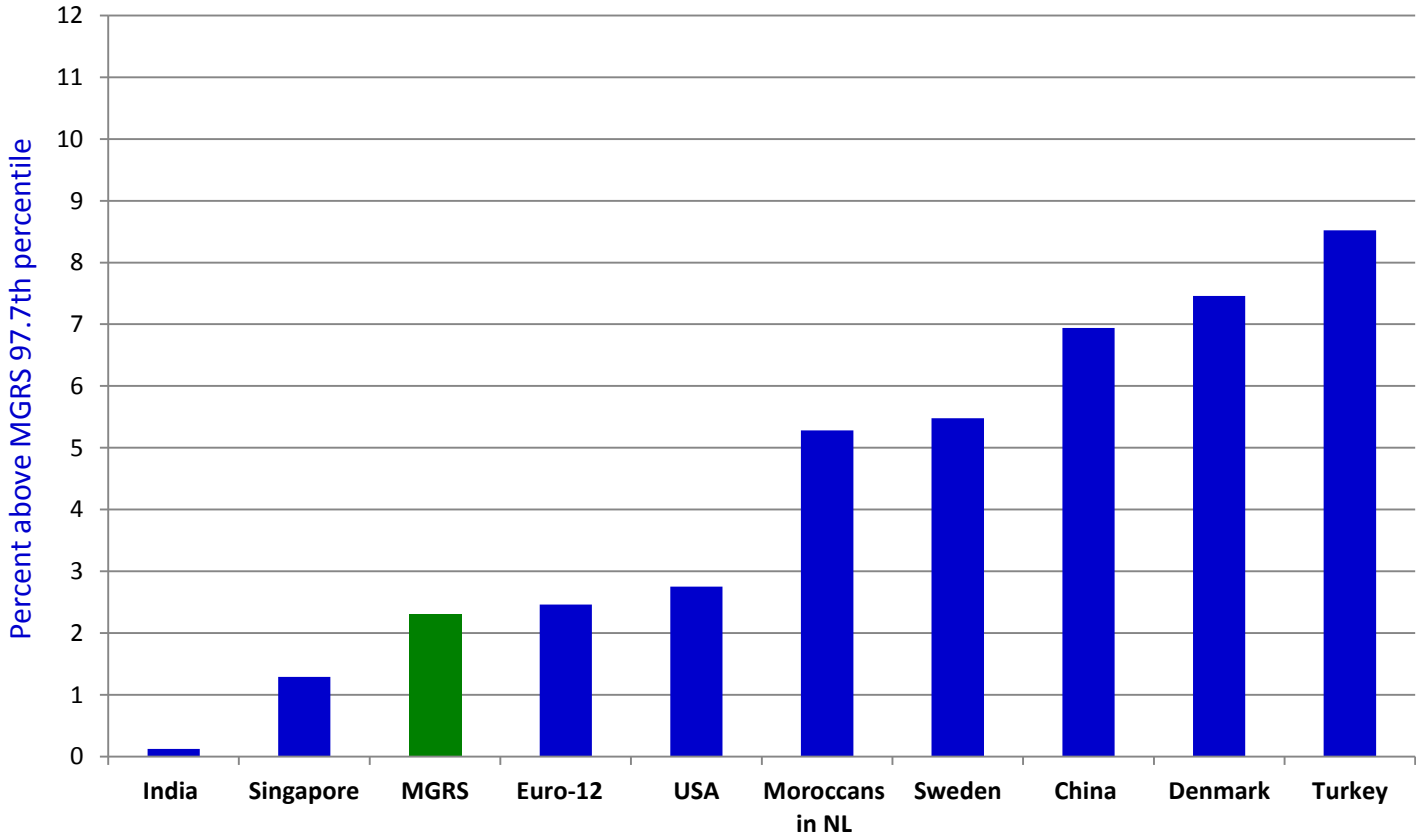
Supplemental Figure 4. Estimated percentages of extreme outliers (height) at age 24 months. 4a.

Percentage of boys (blue) or girls (pink) estimated to be above the 97.7th percentile on the MGRS curves.

4b. Percentage of boys (blue) or girls (pink) estimated to be below the 2.3rd percentile on the MGRS curves.

Moroccans in NL = Moroccan people living in the Netherlands.

Supplemental Figure 4a



Supplemental Figure 4b

