

Web Only Table A: Analysis of Data from 1991-2010 in Men Adjusted for Age, Employment Status and Education

Model 1: Age								
Year	OR	P	Lower 95% CI	Upper 95% CI	% difference	P	Lower 95% CI	Upper 95% CI
1991	1.09	0.484	0.86	1.36	0.85	0.492	-1.57	3.27
1992	1.30	0.013	1.06	1.59	2.91	0.018	0.50	5.31
1993	1.28	0.000	1.13	1.46	2.76	0.000	1.35	4.17
1994	1.15	0.040	1.01	1.31	1.49	0.038	0.08	2.89
1997	1.15	0.091	0.98	1.34	1.46	0.094	-0.25	3.17
1998	1.17	0.029	1.02	1.34	1.65	0.028	0.17	3.13
1999	1.40	0.000	1.20	1.64	3.89	0.000	2.03	5.75
2000	1.04	0.624	0.88	1.23	0.43	0.625	-1.31	2.17
2001	0.98	0.825	0.86	1.13	-0.16	0.825	-1.55	1.24
2002	1.29	0.003	1.09	1.52	2.79	0.004	0.91	4.68
2003	1.05	0.534	0.91	1.21	0.47	0.534	-1.00	1.94
2004	1.00	0.963	0.83	1.22	0.05	0.963	-1.88	1.97
2005	0.97	0.723	0.82	1.15	-0.31	0.722	-2.02	1.40
2006	1.06	0.465	0.91	1.22	0.56	0.465	-0.95	2.08
2008	1.00	-	-	-	0.00	-	-	-
2009	1.53	0.000	1.26	1.86	5.07	0.000	2.60	7.55
2010	1.31	0.001	1.12	1.54	3.04	0.001	1.17	4.91
Model 2: Age + Employment Status								
Year	OR	P	Lower 95% CI	Upper 95% CI	% difference	P	Lower 95% CI	Upper 95% CI
1991	1.03	0.793	0.81	1.32	0.32	0.795	-2.12	2.77
1992	1.19	0.108	0.96	1.48	1.83	0.119	-0.47	4.14
1993	1.22	0.005	1.06	1.40	2.06	0.004	0.66	3.46
1994	1.07	0.308	0.94	1.23	0.72	0.306	-0.66	2.09
1997	1.06	0.453	0.90	1.25	0.62	0.455	-1.01	2.26
1998	1.12	0.128	0.97	1.29	1.12	0.127	-0.32	2.55
1999	1.32	0.001	1.12	1.55	2.97	0.001	1.19	4.75
2000	0.95	0.549	0.80	1.13	-0.50	0.547	-2.13	1.13
2001	0.93	0.303	0.81	1.07	-0.71	0.305	-2.05	0.64
2002	1.26	0.007	1.06	1.50	2.46	0.009	0.62	4.30
2003	1.01	0.926	0.87	1.17	0.07	0.926	-1.36	1.50
2004	0.99	0.959	0.82	1.20	-0.05	0.959	-1.90	1.80
2005	0.92	0.370	0.78	1.10	-0.75	0.367	-2.39	0.88
2006	1.05	0.511	0.91	1.22	0.49	0.511	-0.98	1.96
2008	1.00	-	-	-	0.00	-	0.00	0.00
2009	1.50	0.000	1.24	1.82	4.54	0.000	2.23	6.86
2010	1.31	0.001	1.11	1.54	2.86	0.002	1.07	4.65
Model 3: Age + Employment Status + Education								
Year	OR	P	Lower 95% CI	Upper 95% CI	% difference	P	Lower 95% CI	Upper 95% CI
1991	1.07	0.612	0.83	1.36	0.63	0.617	-1.84	3.10
1992	1.22	0.069	0.98	1.51	2.07	0.079	-0.24	4.37
1993	1.25	0.002	1.09	1.43	2.29	0.001	0.88	3.70
1994	1.10	0.184	0.96	1.26	0.94	0.182	-0.44	2.32
1997	1.08	0.363	0.92	1.27	0.75	0.366	-0.88	2.39
1998	1.13	0.086	0.98	1.31	1.26	0.085	-0.17	2.69
1999	1.34	0.001	1.13	1.57	3.09	0.001	1.31	4.86
2000	0.96	0.607	0.81	1.13	-0.43	0.606	-2.05	1.20
2001	0.93	0.347	0.81	1.08	-0.64	0.349	-1.98	0.70
2002	1.27	0.007	1.07	1.50	2.48	0.008	0.64	4.31
2003	1.01	0.847	0.88	1.17	0.14	0.846	-1.28	1.57
2004	1.00	0.989	0.83	1.21	0.01	0.989	-1.83	1.86
2005	0.93	0.394	0.78	1.10	-0.71	0.391	-2.34	0.92

2006	1.05	0.506	0.91	1.22	0.50	0.506	-0.96	1.95
2008	1.00	-	-	-	0.00	-	-	-
2009	1.50	0.000	1.24	1.82	4.52	0.000	2.21	6.83
2010	1.30	0.002	1.10	1.53	2.79	0.002	1.01	4.56

\* Reference group is 2008

CI = Confidence Interval

OR = Odds Ratio

P = P value

**Web Only Table B: Analysis of Data from 1991-2010 in Women Adjusted for Age, Employment Status and Education**

Model 1: Age								
Year	OR	P	Lower 95% CI	Upper 95% CI	% difference	P	Lower 95% CI	Upper 95% CI
1991	1.30	0.006	1.08	1.56	3.76	0.009	0.93	6.59
1992	1.30	0.001	1.11	1.53	3.80	0.002	1.35	6.26
1993	1.25	0.000	1.12	1.39	3.19	0.000	1.69	4.68
1994	1.26	0.000	1.14	1.40	3.36	0.000	1.84	4.88
1997	1.25	0.000	1.10	1.41	3.17	0.001	1.39	4.96
1998	1.17	0.005	1.05	1.30	2.17	0.005	0.67	3.67
1999	1.24	0.001	1.09	1.41	3.09	0.001	1.24	4.94
2000	1.05	0.521	0.91	1.20	0.60	0.523	-1.24	2.45
2001	0.97	0.642	0.87	1.09	-0.35	0.642	-1.82	1.12
2002	1.24	0.001	1.09	1.41	3.10	0.001	1.22	4.98
2003	0.92	0.171	0.82	1.04	-1.04	0.170	-2.53	0.45
2004	0.93	0.313	0.80	1.08	-1.00	0.308	-2.91	0.92
2005	1.01	0.917	0.88	1.15	0.09	0.918	-1.69	1.88
2006	0.96	0.467	0.86	1.07	-0.55	0.467	-2.04	0.94
2008	1.00	-	-	-	0.00	-	-	-
2009	1.04	0.641	0.88	1.23	0.53	0.643	-1.70	2.76
2010	1.06	0.369	0.93	1.22	0.84	0.372	-1.01	2.70
Model 2: Age + Employment Status								
Year	OR	P	Lower 95% CI	Upper 95% CI	% difference	P	Lower 95% CI	Upper 95% CI
1991	1.29	0.007	1.07	1.55	3.57	0.010	0.86	6.28
1992	1.31	0.002	1.11	1.55	3.77	0.003	1.29	6.25
1993	1.24	0.000	1.11	1.38	2.95	0.000	1.49	4.42
1994	1.26	0.000	1.13	1.41	3.25	0.000	1.76	4.73
1997	1.20	0.003	1.06	1.36	2.54	0.004	0.81	4.27
1998	1.15	0.014	1.03	1.28	1.83	0.013	0.38	3.29
1999	1.21	0.003	1.07	1.38	2.63	0.004	0.85	4.41
2000	1.02	0.766	0.89	1.17	0.27	0.766	-1.49	2.02
2001	0.94	0.308	0.84	1.06	-0.74	0.308	-2.17	0.69
2002	1.22	0.002	1.07	1.39	2.73	0.003	0.93	4.52
2003	0.92	0.170	0.82	1.04	-1.02	0.170	-2.47	0.44
2004	0.92	0.261	0.79	1.07	-1.09	0.254	-2.97	0.79
2005	1.00	0.958	0.88	1.15	0.05	0.959	-1.70	1.79
2006	0.95	0.342	0.85	1.06	-0.70	0.341	-2.13	0.74
2008	1.00	-	-	-	0.00	-	-	-
2009	1.06	0.522	0.90	1.24	0.70	0.526	-1.48	2.89
2010	1.05	0.493	0.91	1.20	0.63	0.495	-1.18	2.43
Model 3: Age + Employment Status + Education								
Year	OR	P	Lower 95% CI	Upper 95% CI	% difference	P	Lower 95% CI	Upper 95% CI

<b>1991</b>	1.29	0.007	1.07	1.55	3.56	0.011	0.83	6.28
<b>1992</b>	1.31	0.002	1.11	1.55	3.79	0.003	1.31	6.26
<b>1993</b>	1.24	0.000	1.11	1.38	2.96	0.000	1.48	4.44
<b>1994</b>	1.26	0.000	1.14	1.41	3.26	0.000	1.77	4.76
<b>1997</b>	1.20	0.004	1.06	1.36	2.54	0.004	0.81	4.27
<b>1998</b>	1.15	0.013	1.03	1.28	1.85	0.013	0.39	3.30
<b>1999</b>	1.21	0.003	1.07	1.38	2.64	0.004	0.85	4.42
<b>2000</b>	1.02	0.752	0.89	1.17	0.28	0.753	-1.47	2.04
<b>2001</b>	0.94	0.319	0.84	1.06	-0.72	0.319	-2.15	0.70
<b>2002</b>	1.22	0.002	1.07	1.39	2.75	0.003	0.96	4.55
<b>2003</b>	0.92	0.179	0.82	1.04	-1.00	0.178	-2.45	0.46
<b>2004</b>	0.92	0.263	0.79	1.07	-1.09	0.257	-2.97	0.79
<b>2005</b>	1.00	0.956	0.88	1.15	0.05	0.956	-1.69	1.79
<b>2006</b>	0.95	0.344	0.85	1.06	-0.69	0.344	-2.13	0.74
<b>2008</b>	1.00	-	-	-	0.00	-	-	-
<b>2009</b>	1.06	0.523	0.90	1.24	0.70	0.527	-1.48	2.88
<b>2010</b>	1.05	0.482	0.92	1.20	0.64	0.485	-1.16	2.44

\* Reference group is 2008

CI = Confidence Interval

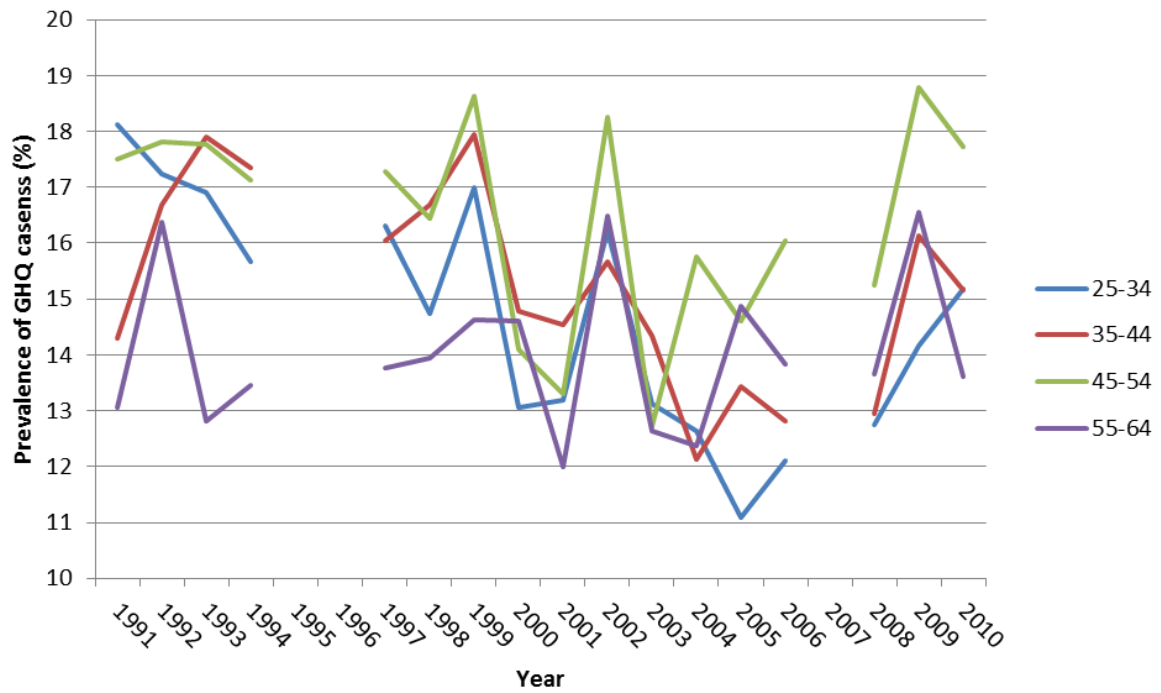
OR = Odds Ratio

P = P value

Web Table C: Analysis of Data from 2000-2010 in Men Adjusted for Age, Employment Status and Income

	Age				Age, Household Income				Age, Employment Status				Age, Employment Status, Income			
	OR	P	Lower 95% CI	Upper 95% CI	OR	P	Lower 95% CI	Upper 95% CI	OR	P	Lower 95% CI	Upper 95% CI	OR	P	Lower 95% CI	Upper 95% CI
2000	1.07	0.461	0.90	1.27	1.15	0.119	0.96	1.37	0.94	0.523	0.78	1.13	0.96	0.689	0.80	1.16
2001	1.00	0.949	0.86	1.15	0.99	0.922	0.85	1.15	0.91	0.239	0.78	1.06	0.91	0.245	0.78	1.07
2002	1.32	0.002	1.11	1.58	1.35	0.001	1.13	1.62	1.28	0.009	1.06	1.54	1.28	0.008	1.07	1.55
2003	1.04	0.656	0.89	1.21	1.04	0.623	0.89	1.21	0.97	0.725	0.83	1.14	0.97	0.748	0.83	1.14
2005	1.00	0.990	0.83	1.20	0.98	0.791	0.81	1.17	0.92	0.419	0.76	1.12	0.92	0.404	0.76	1.12
2006	1.04	0.601	0.89	1.22	1.05	0.568	0.89	1.23	1.03	0.679	0.88	1.22	1.03	0.682	0.88	1.22
2008	1.00	-	-	-	1.00	-	-	-	1.00	-	-	-	1.00	-	-	-
2009	1.57	0.000	1.27	1.94	1.55	0.000	1.25	1.92	1.53	0.000	1.23	1.90	1.53	0.000	1.23	1.90
2010	1.26	0.010	1.06	1.49	1.24	0.015	1.04	1.48	1.25	0.017	1.04	1.49	1.25	0.017	1.04	1.49
	% Difference	P	Lower 95% CI	Upper 95% CI	% Difference	P	Lower 95% CI	Upper 95% CI	% Difference	P	Lower 95% CI	Upper 95% CI	% Difference	P	Lower 95% CI	Upper 95% CI
2000	0.68	0.463	-1.14	2.49	1.43	0.124	-0.39	3.26	-0.55	0.521	-2.23	1.13	-0.35	0.688	-2.04	1.35
2001	-0.05	0.949	-1.53	1.43	-0.07	0.922	-1.52	1.37	-0.85	0.240	-2.27	0.57	-0.84	0.246	-2.26	0.58
2002	3.12	0.002	1.12	5.13	3.27	0.001	1.30	5.24	2.51	0.011	0.58	4.44	2.55	0.010	0.62	4.48
2003	0.35	0.656	-1.19	1.89	0.38	0.623	-1.13	1.89	-0.27	0.725	-1.75	1.22	-0.24	0.748	-1.73	1.24
2005	0.01	0.990	-1.82	1.85	-0.24	0.791	-2.00	1.52	-0.72	0.416	-2.47	1.02	-0.74	0.401	-2.47	0.99
2006	0.43	0.601	-1.18	2.03	0.46	0.568	-1.11	2.03	0.33	0.679	-1.22	1.87	0.32	0.682	-1.22	1.86
2008	0.00	-	-	-	0.00	-	-	-	0.00	-	-	-	0.00	-	-	-
2009	5.35	0.000	2.64	8.05	4.95	0.000	2.33	7.58	4.58	0.000	2.07	7.09	4.58	0.000	2.07	7.09
2010	2.48	0.012	0.54	4.42	2.29	0.018	0.40	4.18	2.22	0.019	0.36	4.08	2.21	0.020	0.35	4.06

\* Reference group is 2008  
CI = Confidence Interval  
OR = Odds Ratio  
P = P value



Web figure: Prevalence of GHQ caseness by age group 1991 to 2010