



Sample collection instructions	£ 0.05	1	£ 0.05	1	£ 0.05	1	£ 0.05	1	£ 0.05	1	£ 0.05	1	£ 0.05
Transport tube	£ 0.26	1	£ 0.26	1	£ 0.26	1	£ 0.26	1	£ 0.26	1	£ 0.26	1	£ 0.26
Urine pot, sterile collection	£ 0.23	0.7	£ 0.16	0.7	£ 0.16	0.7	£ 0.16	0.7	£ 0.16	0.7	£ 0.16	0.7	£ 0.16
Urine specimen container (PCR tube and pipette)	£ 1.04	0.7	£ 0.73	0.7	£ 0.73	0.7	£ 0.73	0.7	£ 0.73	0.7	£ 0.73	0.7	£ 0.73
Vulvo-vaginal swab	£ 0.16	0.3	£ 0.05	0.3	£ 0.05	0.3	£ 0.05	0.3	£ 0.05	0.3	£ 0.05	0.3	£ 0.05
Postage/packaging <sup>4</sup>	£ 0.89	0.24	£ 0.21	0.24	£ 0.21	0.24	£ 0.21	0.24	£ 0.21	1	£ 0.89	0.24	£ 0.21
Return envelope and postage <sup>4</sup>	£ 0.89	0.24	£ 0.21	0.24	£ 0.21	0.24	£ 0.21	0.24	£ 0.21	1	£ 0.89	0.24	£ 0.21
<b>Health promotion/Q&amp;A<sup>6</sup></b>													
Health professional-led discussion - blend of Community SRH staff (N2 to Doctor)	£ 1.06	6	£ 6.33	6	£ 6.33	6	£ 6.33	6	£ 6.33	6	£ 6.33	6	£ 6.33
KY lubricant	£ 0.30	2	£ 0.60	2	£ 0.60	2	£ 0.60	2	£ 0.60	2	£ 0.60	2	£ 0.60
STI literature	£ 0.06	3	£ 0.18	3	£ 0.18	3	£ 0.18	3	£ 0.18	3	£ 0.18	3	£ 0.18
Male condom	£ 0.06	10	£ 0.58	10	£ 0.58	10	£ 0.58	10	£ 0.58	10	£ 0.58	10	£ 0.58
<b>RETEST PROCESSED AND RESULTS GIVEN</b>													
<b>Pathology</b>													
Lab processing	£ 12.51	1	£ 12.51	1	£ 12.51	1	£ 12.51	1	£ 12.51	1	£ 12.51	1	£ 12.51
<b>Results management (retest negatives)</b>													
Nurse band 5/6	£ 0.75	6	£ 4.50	6	£ 4.50	6	£ 4.50	6	£ 4.50	6	£ 4.50	6	£ 4.50
Letter notification	£ 0.58	0.02	£ 0.01	0.02	£ 0.01	0.02	£ 0.01	0.02	£ 0.01	0.02	£ 0.01	0.02	£ 0.01
Phone call	£ 0.07	0.03	£ 0.00	0.03	£ 0.00	0.03	£ 0.00	0.03	£ 0.00	0.03	£ 0.00	0.03	£ 0.00
SMS text message	£ 0.10	0.95	£ 0.10	0.95	£ 0.10	0.95	£ 0.10	0.95	£ 0.10	0.95	£ 0.10	0.95	£ 0.10
<b>Results management (retest positives/equivocal)</b>													
Nurse band 5/6/7/8	£ 0.89	15	£ 13.38	15	£ 13.38	15	£ 13.38	15	£ 13.38	15	£ 13.38	15	£ 13.38
Letter notification	£ 0.58	0.05	£ 0.03	0.05	£ 0.03	0.05	£ 0.03	0.05	£ 0.03	0.05	£ 0.03	0.05	£ 0.03
Phone call	£ 0.07	0.05	£ 0.00	0.05	£ 0.00	0.05	£ 0.00	0.05	£ 0.00	0.05	£ 0.00	0.05	£ 0.00
SMS text message	£ 0.10	0.9	£ 0.09	0.9	£ 0.09	0.9	£ 0.09	0.9	£ 0.09	0.9	£ 0.09	0.9	£ 0.09
Treatment <sup>7</sup>	£ 1.80	1	£ 1.80	1	£ 1.80	1	£ 1.80	1	£ 1.80	1	£ 1.80	1	£ 1.80
<b>Follow-up call<sup>5</sup></b>													
Blend admin/clerical <sup>1,4</sup>	£ 0.53	5	£ 2.64	5	£ 2.64	5	£ 2.64	5	£ 2.64	5	£ 2.64	5	£ 2.64
Nurse band 5/6 <sup>2</sup>	£ 0.75	10	£ 7.50	10	£ 7.50	10	£ 7.50	10	£ 7.50	10	£ 7.50	10	£ 7.50
Phone call <sup>2</sup>	£ 0.07	3	£ 0.21	3	£ 0.21	3	£ 0.21	3	£ 0.21	3	£ 0.21	3	£ 0.21

Shaded entries were taken directly from the basic cost of a (first) chlamydia test<sup>[1]</sup> which is reproduced here under a Creative Commons licence:



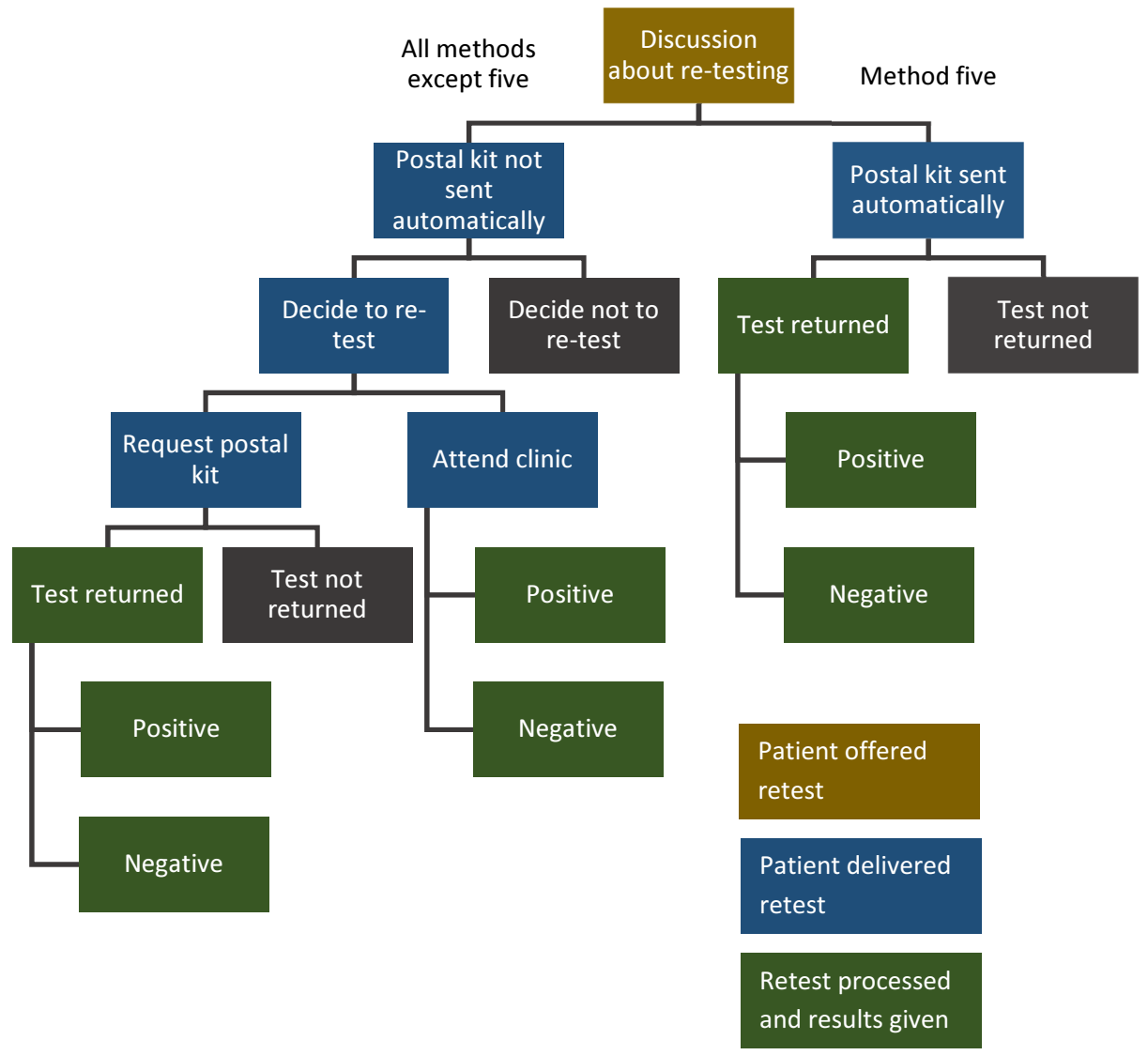
© Pathway Analytics

All other costs are either amended costs from Pathway Analytics (see below for explanation), or costs added in.

<sup>1</sup>Any contact at a distance with client further to the initial retest conversation is assumed to require 5 minutes of admin time to retrieve and update the client's details on a database. <sup>2</sup>A phone call is assumed to be 3 minutes in length but requiring 10 minutes of nurse time to accommodate chasing time. <sup>3</sup>Applicable to clinic retesting: these costs are removed entirely where retesting involves postal testing only, and reduced

proportionally for the remaining recall methods to allow for some clients opting for postal retesting. <sup>4</sup>Applies to postal kits: includes postage to client's address and return postage[2], and associated admin time for sending out a kit. <sup>5</sup>Positives only. <sup>6</sup>It is assumed that all clients will received these at some point including those opting for retesting by post. <sup>7</sup>4 x 250mg of azithromycin in tablet form[3]. VAT, dispensing costs and costs associated with a test for cure are not included. <sup>8</sup>Number of units for clinic vs postal testing kit costs obtained by multiplying base costs by the percentage using each.

Appendix Figure 1 Retesting pathway



**Appendix Table 2 Parameter values**

Parameter	Baseline value (10-14 weeks since treatment for first infection)		Sensitivity value (10-26 weeks since treatment for first infection)		Reference
Retest uptake (i.e., percentage of (first) positives who choose to accept retesting) (all methods except method five) <sup>1</sup>	1. Client-led	5%	1. Client-led	15%	NCSP audit report[4] and NCSP audit data provided by PHE
	2. Reminder card	4%	2. Reminder card	19%	
	3. SMS invitation	9%	3. SMS invitation	21%	
	4. Phone invitation	7%	4. Phone invitation	17%	
	6. Advice at follow- up & SMS	13%	6. Advice at follow- up & SMS	25%	
Percentage of those retesting who choose to attend a clinic for a retest (all methods except method five) <sup>2</sup>	76%		73%		NCSP audit data provided by PHE
Percentage of those retesting who choose to request a postal kit (all methods except method five)	=100-76% =24%		=100-73% =27%		
Postal test kit return rate (requested kits)	67%		67%		Retesting pilot[5]
Postal test kit return rate (kits sent out automatically; method five)	5. Automatic postal test kit	10%	5. Automatic postal test kit	23%	NCSP audit report[4] and NCSP audit data provided by PHE
Chlamydia retest positivity <sup>3</sup>	12%		16%		NCSP audit report[4] and NCSP audit data provided by PHE

<sup>1</sup>Obtained by fitting to overall retest rates from the audit (i.e., accounting for non-return of requested postal kits); <sup>2</sup>The audit only has data on percentage of *completed* retests obtained from clinic testing vs postal testing (for those instances where a kit was not sent out automatically), not percentage of those who opt for a retest at a clinic among *all* retesters (i.e., including all those who request a kit, some of whom do not return the kit); <sup>3</sup>Average over the six most commonly-used methods.

## References

1. Pathway Analytics: Pathway Prices for Integrated Sexual Health Tariffs 118. *T3 Chlamydia, gonorrhoea and syphilis tests* <https://www.pathwayanalytics.com/pathways/26-t3-chlamydia-gonorrhoea-syphilis-tests/118-t3-chlamydia-gonorrhoea-and-syphilis-tests> Accessed 2013.
2. Royal Mail: Get a price <http://www.royalmail.com/price-finder> Accessed 14/08/2015.
3. British National Formulary: Azithromycin <http://www.evidence.nhs.uk/formulary/bnf/current/5-infections/51-antibacterial-drugs/515-macrolides/azithromycin> Accessed 02/02/2016.
4. *Re-testing of those who tested positive for chlamydia: National audit report* [https://www.gov.uk/government/uploads/system/uploads/attachment\\_data/file/471585/NCSPre-testingauditfinalversion.pdf](https://www.gov.uk/government/uploads/system/uploads/attachment_data/file/471585/NCSPre-testingauditfinalversion.pdf) Accessed 13/09/2016.
5. Angel, G., et al., *An observational study to evaluate three pilot programmes of retesting chlamydia-positive individuals within 6 months in the South West of England*. *BMJ Open*, 2016. 5(10): p. e007455.