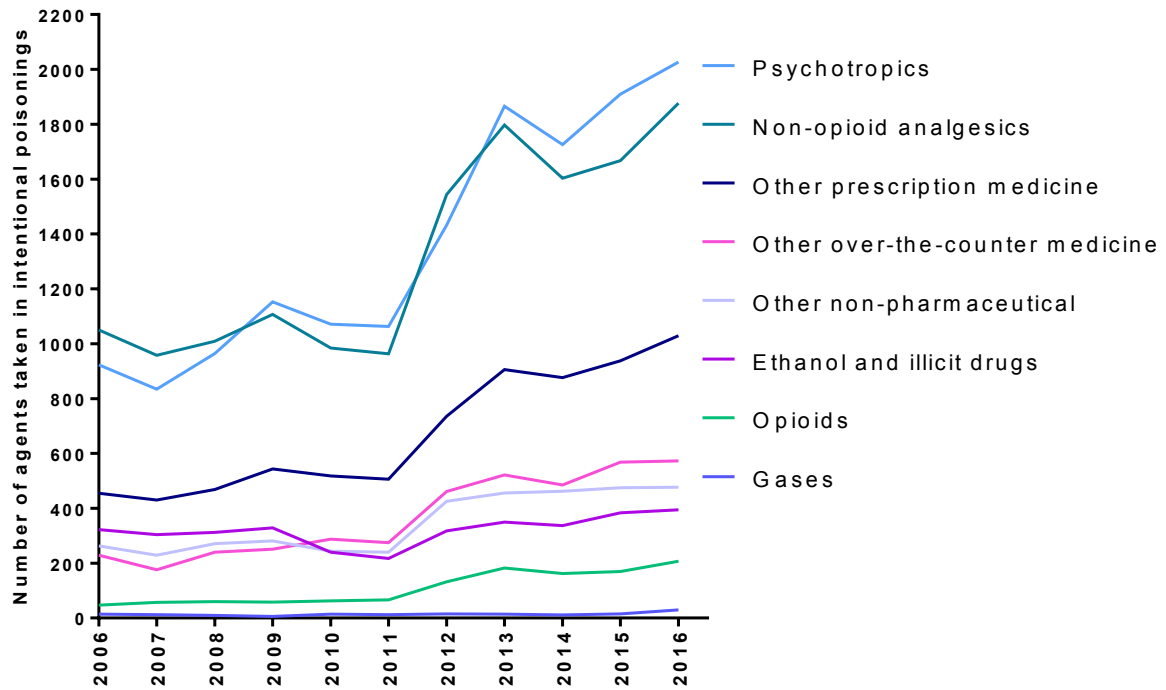


SUPPLEMENTARY TABLES/FIGURES:

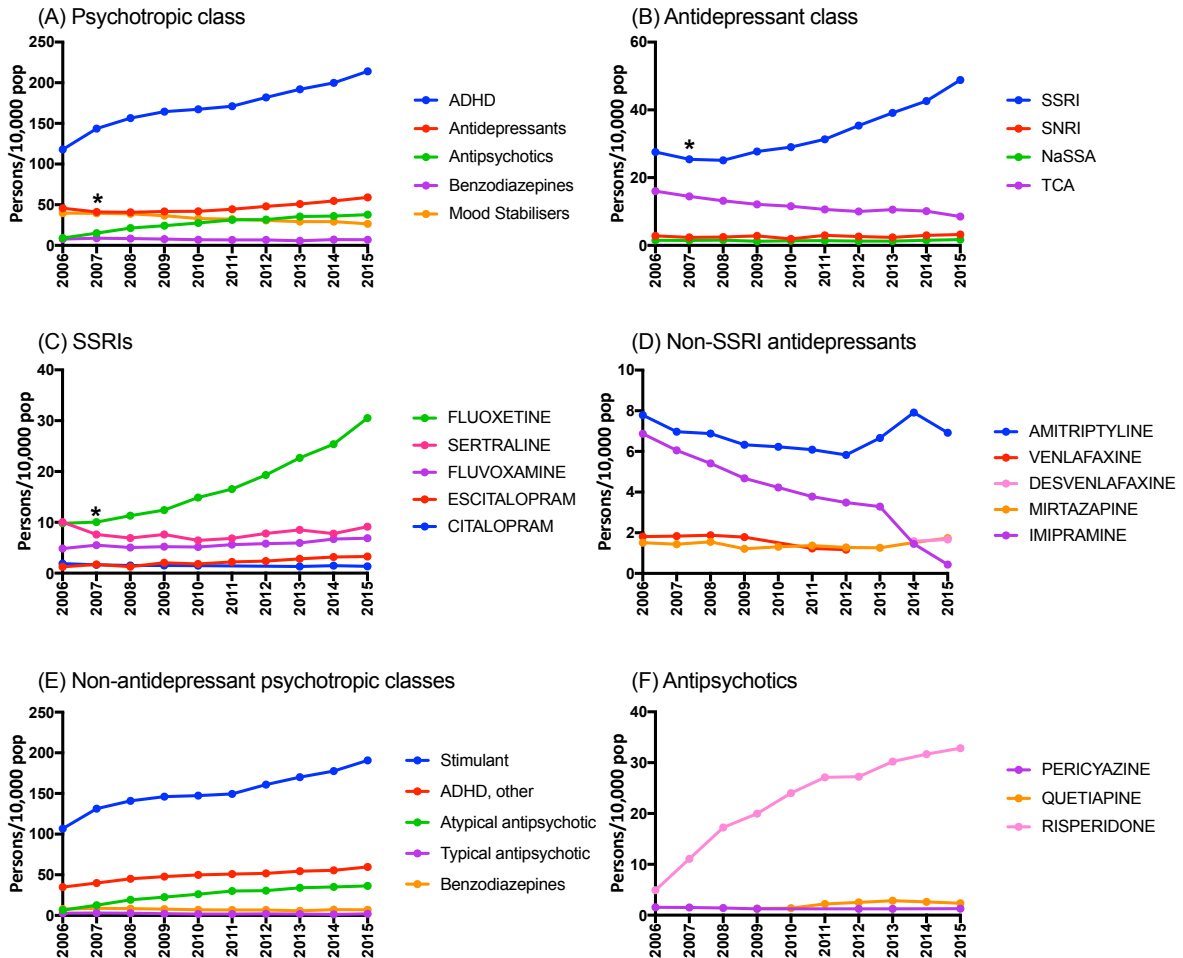
Supplementary Table 1: Diagram showing data used to construct birth year specific self-poisoning frequencies

Age at DSP (yrs)	Year of birth																									
	1987	1988	1989	1990	1991	1992	1993	1994	1995	1996	1997	1998	1999	2000	2001	2002	2003	2004	2005	2006	2007	2008	2009	2010	2011	



Supplementary Figure 1: Trends in substance taken in intentional poisonings reported to NSWPIC and VPIC, 2006-2016, in those aged 5-19 years. *NSWPIC, New South Wales Poisons Information Centre; VPIC, Victorian Poisons Information Centre*

PBS dispensings, 5-14 year olds

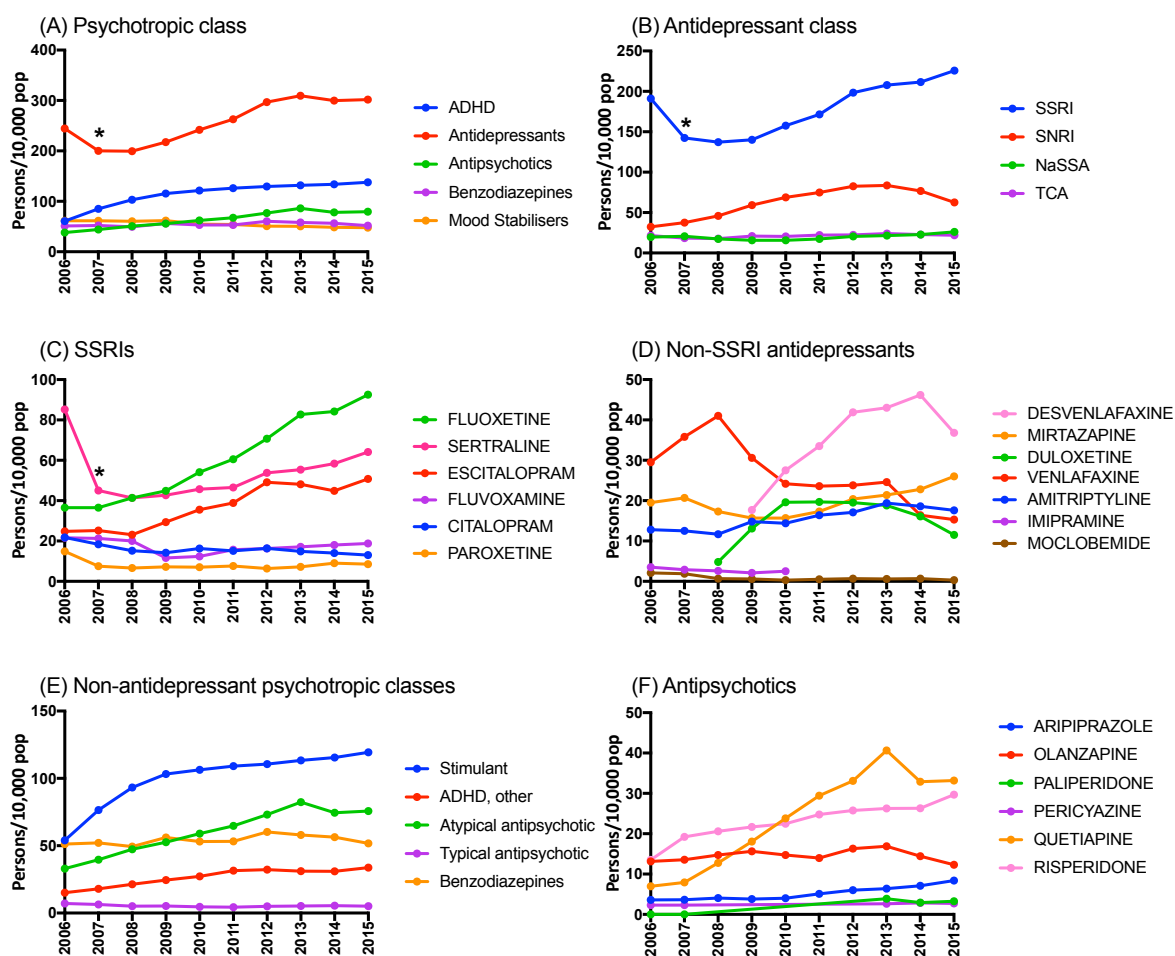


Supplementary Figure 2: Prevalence of PBS-subsidised psychotropic medicine use in patients aged 5-14 years, (number of persons/10,000 pop.) 2006-2015. Data not shown in medicines/classes where there were <30 persons in 10% sample on that class in the year examined.

* Trend influenced by change in sertraline subsidy, 2006/2007

SSRI, selective serotonin reuptake inhibitor; SNRI, serotonin noradrenaline reuptake inhibitor; NaSSA, noradrenergic and specific serotonergic antidepressant; TCA, tricyclic antidepressant; ADHD, attention deficit hyperactivity disorder.

PBS dispensings, 15-19 year olds

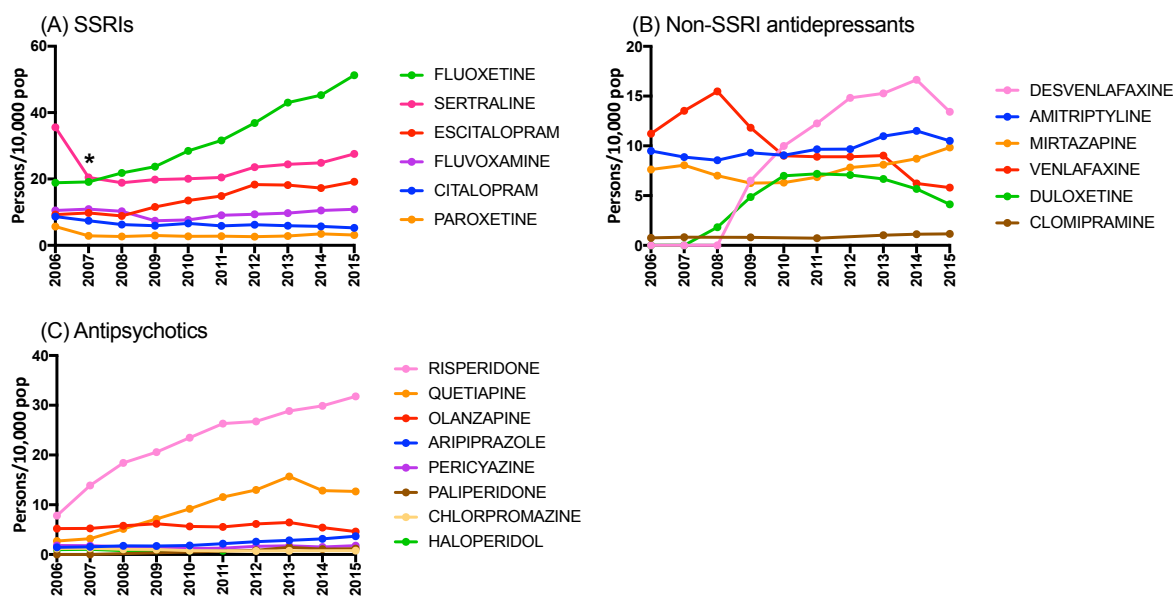


Supplementary Figure 3: Prevalence of PBS-subsidised psychotropic medicine use in patients aged 15-19 years, (number of persons/10,000 pop.) 2006-2015. Data not shown in medicines/classes where there were <30 persons in 10% sample on that class in the year examined.

* Trend influenced by change in sertraline subsidy, 2006/2007

SSRI, selective serotonin reuptake inhibitor; SNRI, serotonin noradrenaline reuptake inhibitor; NaSSA, noradrenergic and specific serotonergic antidepressant; TCA, tricyclic antidepressant; ADHD, attention deficit hyperactivity disorder.

PBS dispensings, 5-19 year olds



Supplementary Figure 4: Prevalence of PBS-subsidised psychotropic medicine use in patients aged 5-19 years, (number of persons/10,000 pop.) 2006-2015. Data not shown in medicines/classes where there were <30 persons in 10% sample on that class in the year examined. * Trend influenced by change in sertraline subsidy, 2006/2007