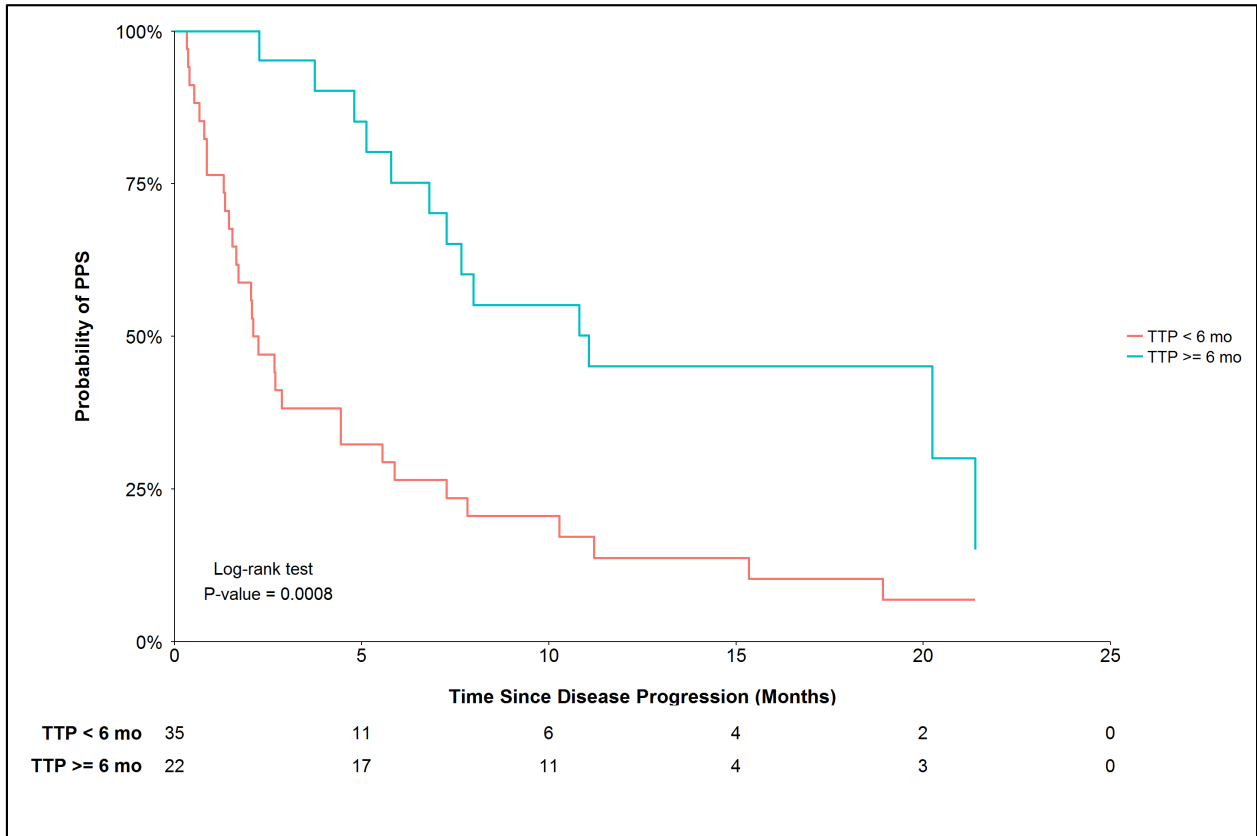
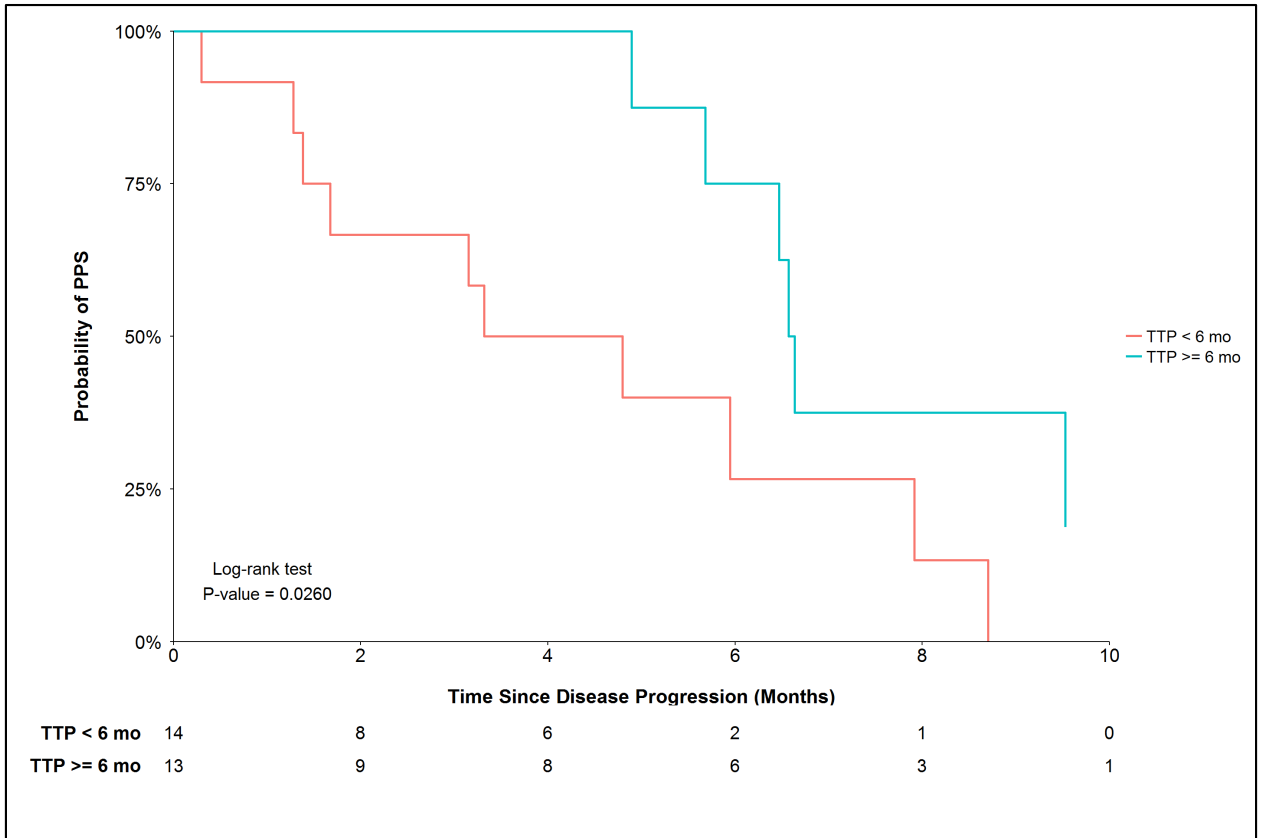


**Supplemental Figure 1. Kaplan-Meier Analysis of PPS in patients stratified by duration of TTP:
Cohorts A (A) and B (B)**

A. Cohort A



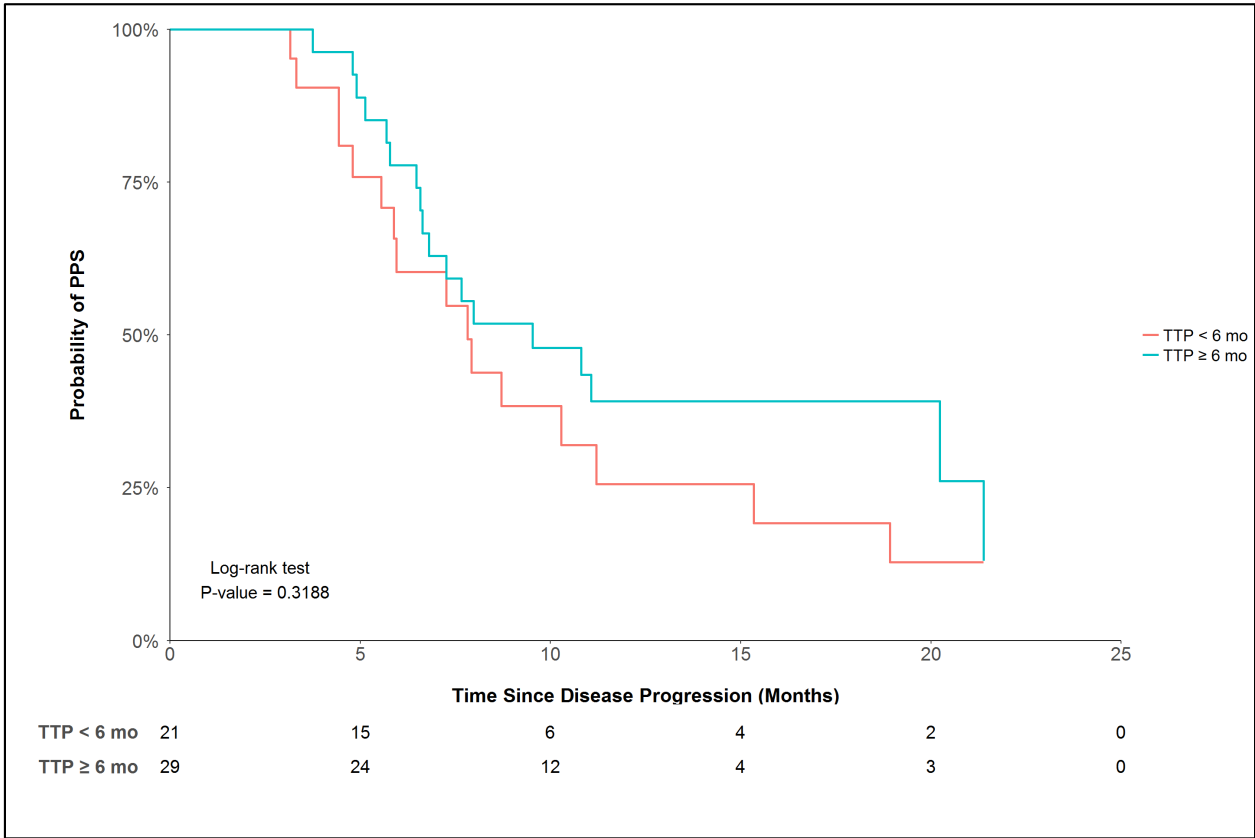
B. Cohort B



Legend

Abbreviations: PPS = post-progression survival; TTP = time to progression.

Supplemental Figure 2. Kaplan-Meier Analysis of PPS in patients stratified by duration of TTP: Landmark Analysis (excluding patients who died/were censored prior to 3 months follow-up)



Legend

Abbreviations: PPS = post-progression survival; TTP = time to progression.

Supplemental Table 1. Status of Patients Excluded from the Analysis who did not Experience Disease Progression

Patient Status, N (%)	Combined Cohort N = 51	Cohort A N = 21	Cohort B N = 30
Censored, follow-up ended	14 (27.5)	11 (52.4)	3 (10.0)
Censored, follow-up ongoing	28 (54.9)	6 (28.6)	22 (73.3)
Died	9 (17.6)	4 (19.0)	5 (16.7)

Caption

Abbreviations: N = number.

Supplementary Table 2. Summary of Patient Characteristics: Cohorts A and B

Patient characteristic	Cohort A	Cohort B
	N = 57	N = 27
Demographics, N (%)		
Age < 65 years	27 (47.4)	14 (51.9)
Male	29 (50.9)	13 (48.1)
Race (White) ⁱ	43 (75.4)	24 (88.9)
History of tobacco use, N (%)		
Current or former smoker	34 (59.6)	19 (70.4)
Disease and treatment characteristics,		
ECOG performance status score >1 before or at progression, N (%)	12 (21.1)	2 (7.4)
Time since diagnosis to study treatment initiation (months), mean ± SD	22.1 ± 20.0	21.0 ± 15.9
Prior anti-cancer therapy, N (%)		
Number of prior systemic regimens for metastatic disease >1	27 (47.4)	11 (40.7)
Radiotherapy	22 (38.6)	7 (25.9)
Maintenance therapy	11 (19.3)	8 (29.6)
Response to the most recent prior therapy for metastatic disease, N (%)ⁱⁱ		
Complete or partial response	11 (19.3)	7 (25.9)

Caption

Abbreviations: ECOG = Eastern Cooperative Oncology Group; mg = milligrams; N = number; SD = standard deviation.

Notes:

ⁱ Other reported races included Asian, Black or African American, and Mixed.

ⁱⁱ Response to the most recent prior anti-cancer therapy included complete response, partial response, stable disease, and progressive disease. Seven patients in Cohort A (including one patient with a non-

evaluable response) and one patient in Cohort B had an unknown response. These patients were imputed as non-complete or partial responders.

Supplemental Table 3. Summary of PPS, Stratified by Duration of TTP: Cohorts A and B

Cohort	N	Number of post-progression deaths	Median PPS (months)	95% CI
<i>Cohort A</i>				
TTP ≥ 6 months	22	13	11.1	(6.8-21.4)
TTP < 6 months	35	31	2.2	(1.4-4.4)
<i>Cohort B</i>				
TTP ≥ 6 months	13	6	6.6	(4.9-NR)
TTP < 6 months	14	10	4.1	(1.3-7.9)

Caption

Abbreviations: CI = confidence interval; N = number; NR = not reached; PPS = post-progression survival; TTP = time to progression.

Supplementary Table 4. Summary of Patient Characteristics in Landmark Analysis (excluding patients who died/were censored prior to 3 months follow-up)

Patient characteristic	Total N = 50	Time to progression ≥ 6 months N = 29	Time to progression < 6 months N = 21	P-value
Demographics, N (%)				
Age < 65 years	20 (40.0%)	10 (34.5%)	10 (47.6%)	0.52
Male	20 (40.0%)	12 (41.4%)	8 (38.1%)	1.00
Race (White) ⁱ	39 (78.0%)	24 (82.8%)	15 (71.4%)	0.54
History of tobacco use, N (%)				
Current or former smoker	27 (54.0%)	13 (44.8%)	14 (66.7%)	0.21
Disease and treatment characteristics				
ECOG performance status before or at progression > 1, N (%)	3 (6.0%)	1 (3.4%)	2 (9.5%)	0.77
Time since diagnosis to study treatment initiation (month), mean ± SD	23.1 ± 17.3	22.3 ± 16.8	24.1 ± 18.4	0.81
Prior anti-cancer therapy, N (%)				
Number of prior systemic regimens for metastatic disease > 1	23 (46.0%)	11 (37.9%)	12 (57.1%)	0.29
Radiotherapy	16 (32.0%)	8 (27.6%)	8 (38.1%)	0.63
Maintenance therapy	14 (28.0%)	8 (27.6%)	6 (28.6%)	1.00
Response to the most recent prior therapy for metastatic disease, N (%)ⁱⁱ				
Complete or partial response	12 (24.0%)	5 (17.2%)	7 (33.3%)	0.33

Caption

Abbreviations: ECOG = Eastern Cooperative Oncology Group; N = number; SD = standard deviation.

Notes:

ⁱ Other reported races included Asian, Black or African American, and Mixed.

ⁱⁱ Response to the most recent prior anti-cancer therapy included complete response, partial response, stable disease, and progressive disease.

Supplementary Table 5. The Multivariable Cox Model of the Association between TTP and PPS in the Combined Cohort: Landmark Analysis (excluding patients who died/were censored prior to 3 months follow-up)

Combined Cohort			
	HR	95% CI	P
Time to progression in 3-month increment(s)	0.84	(0.63-1.13)	0.242
Age < 65 years Yes vs. No	1.46	(0.59-3.61)	0.411
Male Yes vs. No	0.59	(0.25-1.41)	0.236
Race (White) Yes vs. No	1.17	(0.31-4.41)	0.814
Current or former smoker Yes vs. No	1.25	(0.46-3.41)	0.662
ECOG performance status before or at progression > 1 Yes vs. No	6.50	(1.02-41.50)	0.048 *
Time since diagnosis to study treatment initiation in 1-month increment(s)	0.97	(0.94-1.01)	0.115
Number of prior systemic regimens for metastatic disease > 1 Yes vs. No	1.69	(0.56-5.16)	0.355
Prior radiotherapy Yes vs. No	0.90	(0.37-2.18)	0.809
Prior maintenance therapy Yes vs. No	0.44	(0.16-1.22)	0.114
Complete or partial response to most recent prior therapy for metastatic disease Yes vs. No	0.56	(0.20-1.59)	0.279

Caption

Abbreviations: CI = confidence interval; ECOG = Eastern Cooperative Oncology Group; HR = hazard ratio; PPS = post-progression survival; TTP = time to progression. * $p < 0.05$