

**Appendix A: Plotted outputs for sample regression case in 2016. All other models can be built, and similar plots produced, by using the data and code provided in the additional supplementary files.**

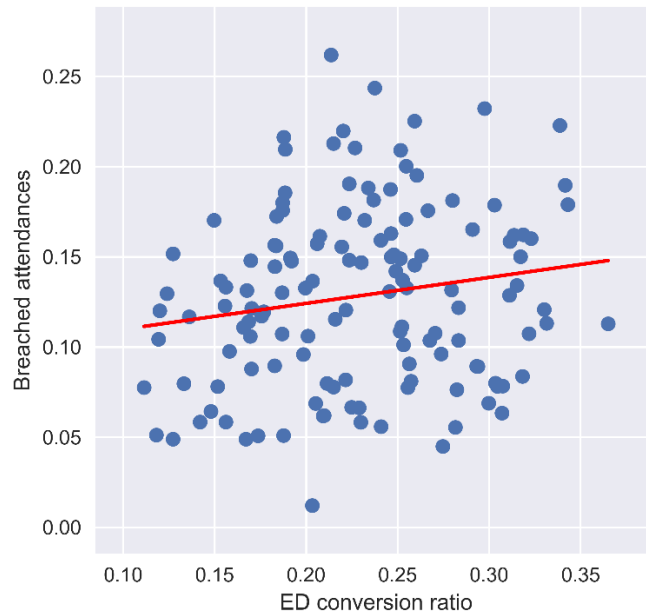


Figure A-1: Scatter plot of 'Breached attendances' and 'ED conversion ratio' with univariate linear regression model.

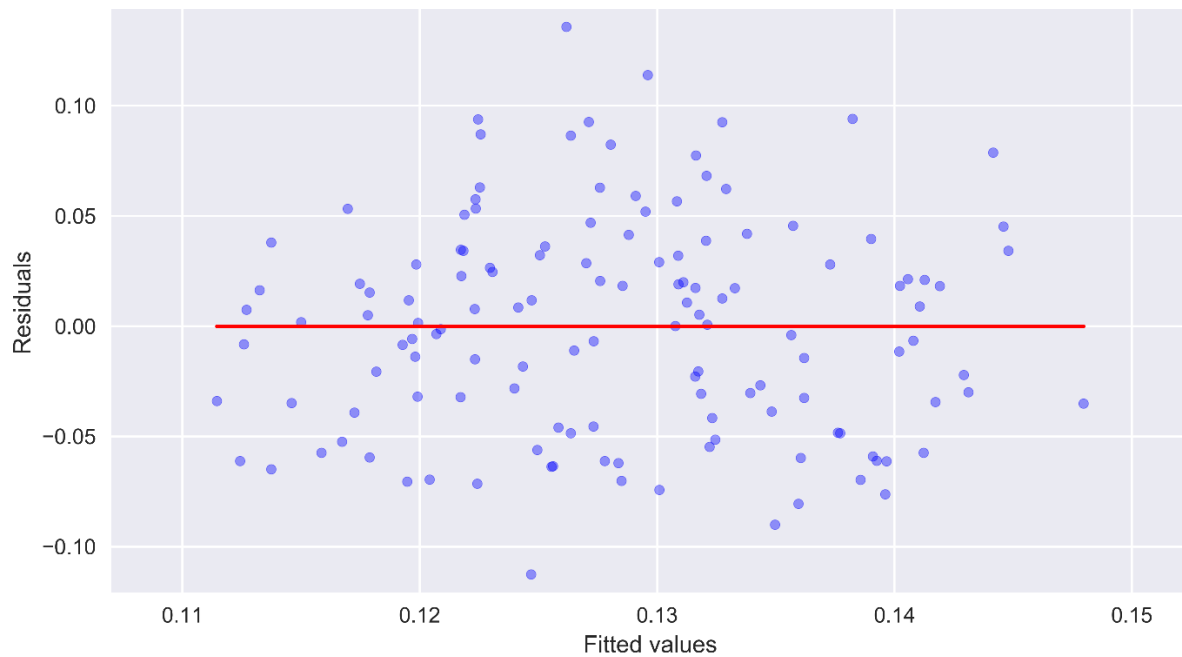


Figure A-2: Scatter plot of univariate regression residuals and fitted values from model in figure A-1.

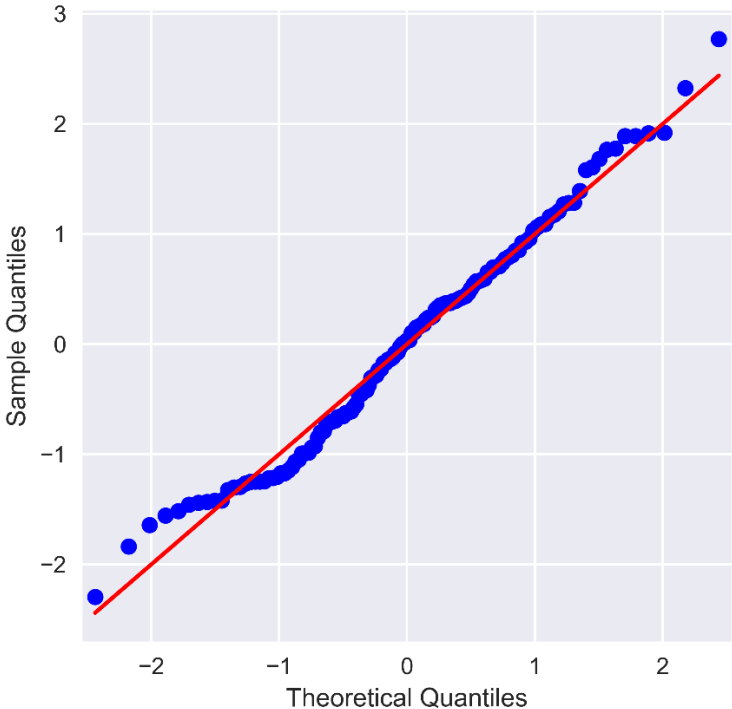


Figure A-3: QQ-plot of univariate regression model in figure A-1.

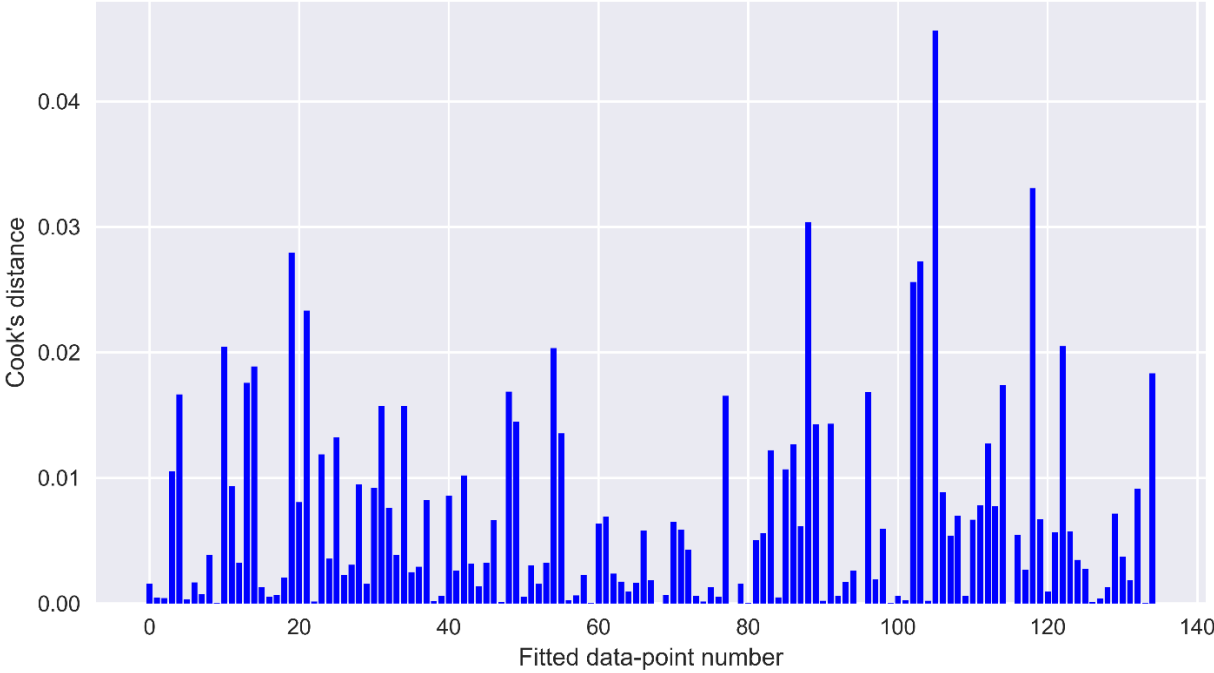


Figure A-4: Cook's distance values for each fitted data-point from model in figure A-1.