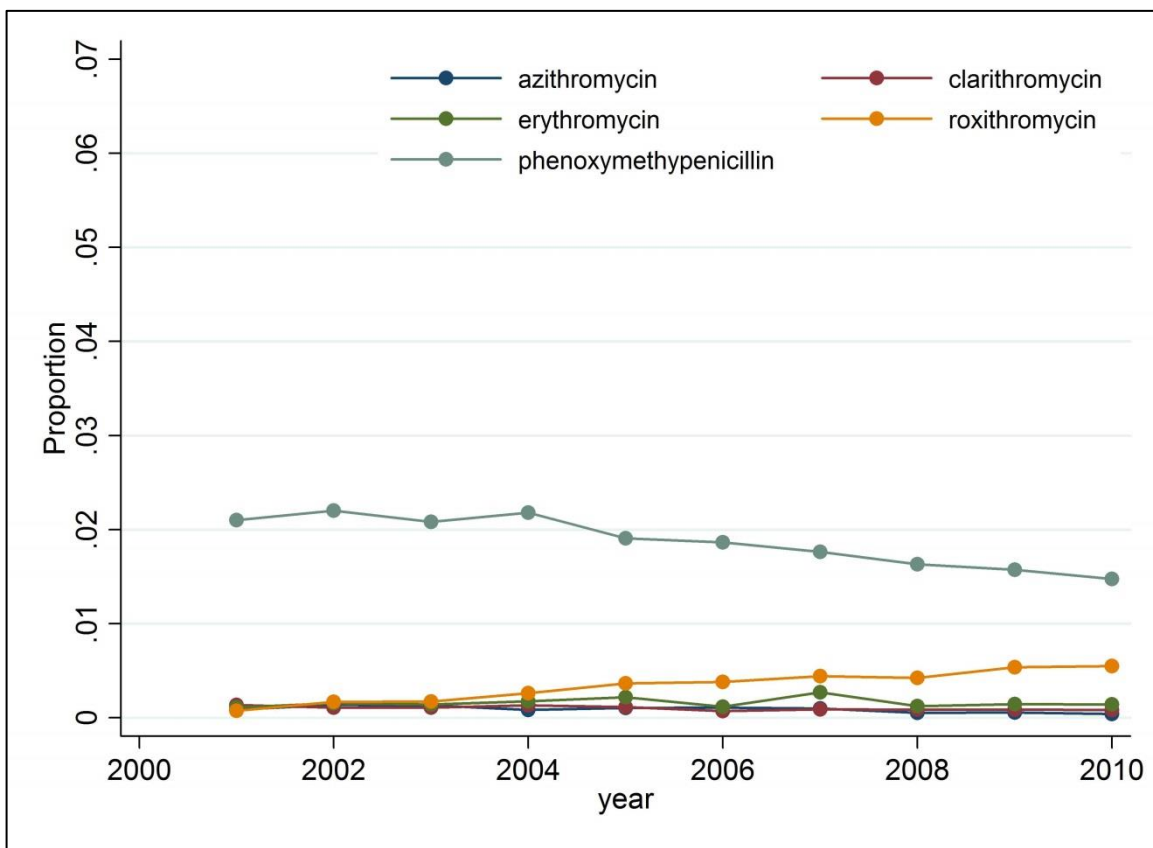
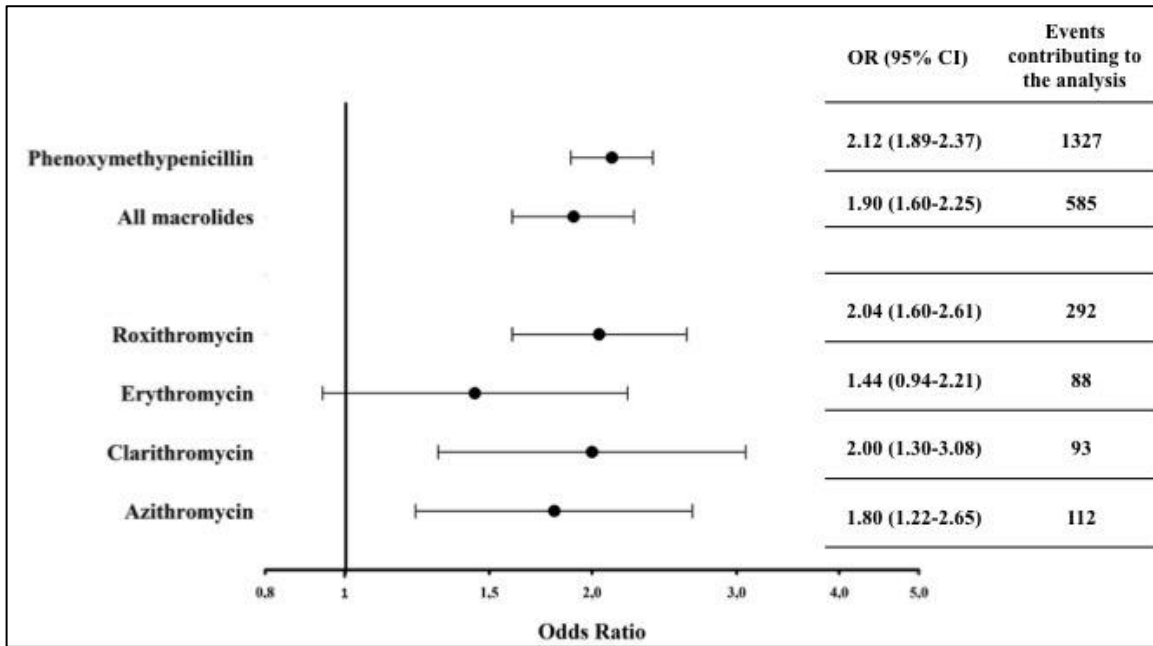


Supplemental Figure 1. Title: Trends in macrolide and phenoxymethylpenicillin drug usage 7 days before event among age and gender matched controls.



Legend: Proportion of all age and gender matched controls in treatment with a macrolide or penicillin-V 7 days before time of OHCA.

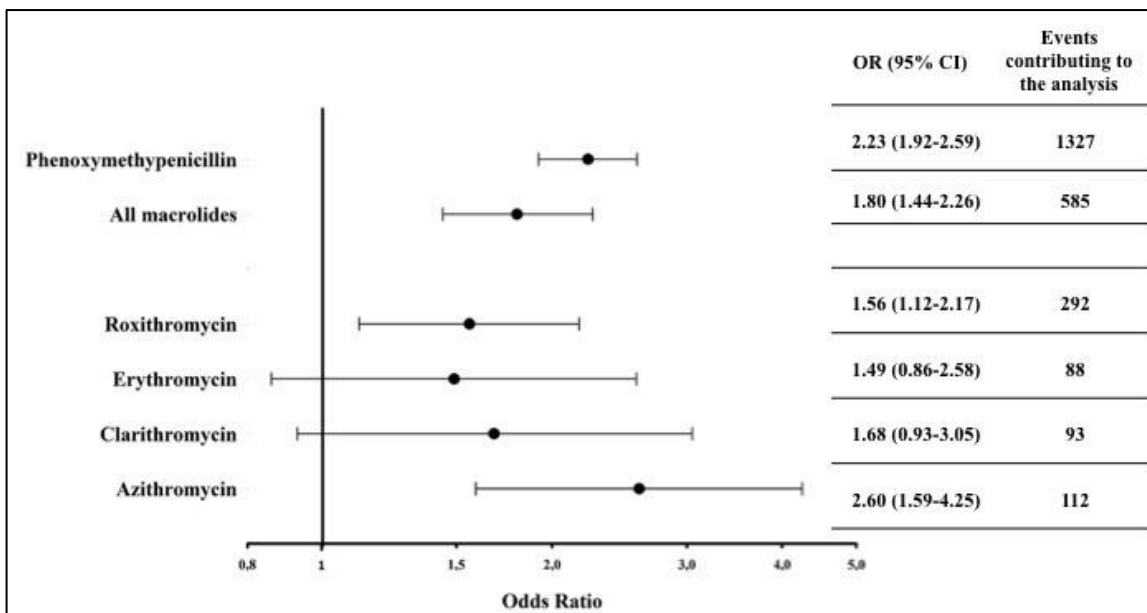
Supplemental Figure 2. Title: Macrolide and phenoxymethylpenicillin treatment and risk of out-of-hospital cardiac arrest according to the case-crossover analysis using non-exposed as reference



Legend: Presented are odds ratios (OR) from the conditional logistic regression analysis in case-crossover models. 95% CI.

* OHCA cases contributing to the analysis by having a discordant drug exposure history in the case and control periods.

Supplemental Figure 3. Title: Macrolide and phenoxymethylpenicillin treatment and risk of out-of-hospital cardiac arrest according to case-time-crossover analysis using non-exposed as reference



Legend: Presented are odds ratios (OR) from the conditional logistic regression analysis in case-time-control models. 95% CI.

* OHCA cases contributing to the analysis by having a discordant drug exposure history in the case and control periods.

Supplemental Table 1: Detailed listing of antibiotic treatment by case and control periods

	Non-non	Exp-Exp	Non-Exp	Exp-Non	N discordant exposures*	N Exposed ≤ 7 days before OHCA
	(ref-index)	(ref-index)	(ref-index)	(ref-index)		
Penicillin						
cases	27,276	336	901	426	1327	1237
controls	112,712	1316	857	903	1760	2173
Roxithromycin						
cases	28,581	66	196	96	292	262
controls	115,247	220	182	139	321	402
Erythromycin						
cases	28,821	30	52	36	88	82
controls	115,534	126	63	65	128	189
Clarithromycin						
cases	28,820	26	62	31	93	88
controls	115,626	70	50	42	92	120
Azithromycin						
cases	28,817	10	72	40	112	82
controls	115,779	38	70	101	171	108

*Contributes to the case-crossover and case-time-control analyses.

“Ref-index” indicates the reference and index period (i.e. case and control period)

“Non” indicates non-exposed. “Exp” indicates exposed