

Supplementary Material

Figure A:
mCRBSI incidence rate per 1000 patient-days: Overall and subgroups

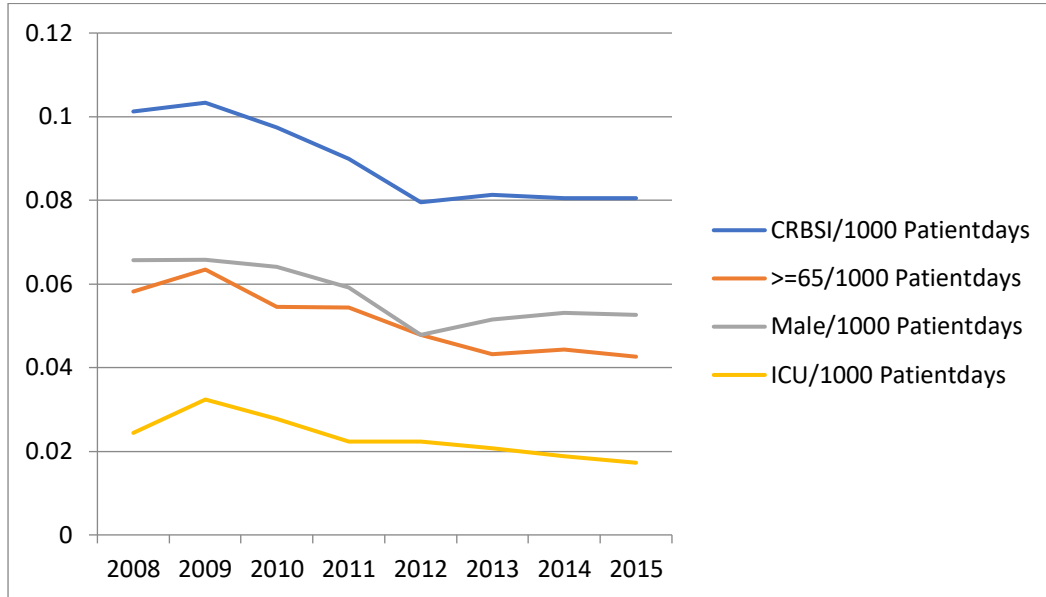


Figure B:
mCRBSI incidence rate per 1000 patient-days by causative organism

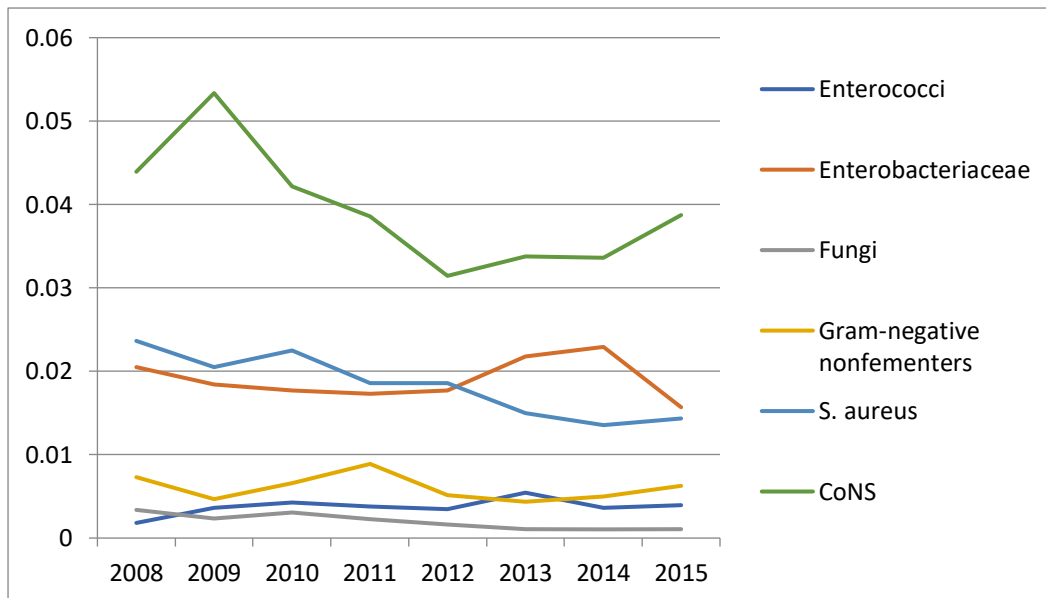
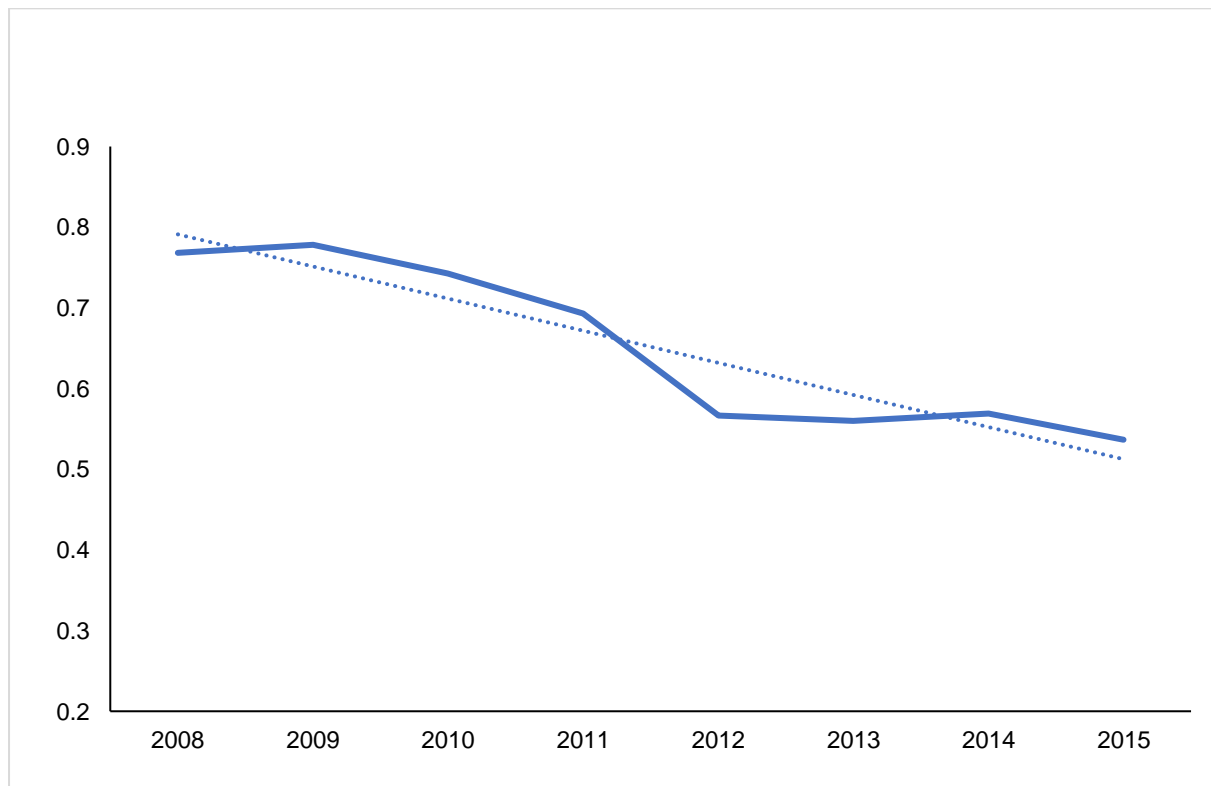


Figure C
Overall mCRBSI incidence rate per 1000 admissions



Footnote: *mCRBSI was defined as isolating the same microorganism with identical antibiogram from ≥ 1 blood cultures (performed -7 days to +2 days around the catheter removal) as the one recovered from the catheter tip.

Figure D (1-3)

Figure D1

Evolution of ceftriaxone resistance in Enterobacteriaceae

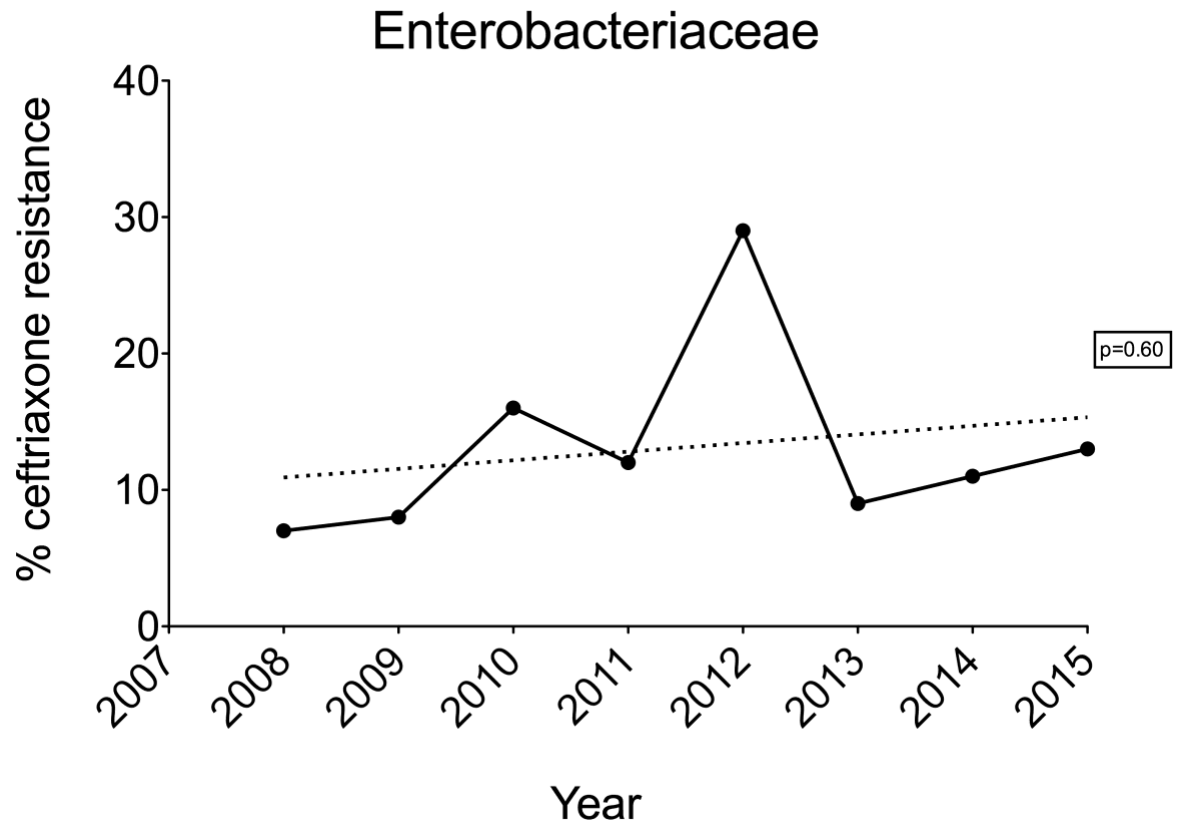


Figure D2
Evolution of vancomycin resistance in Enterococci

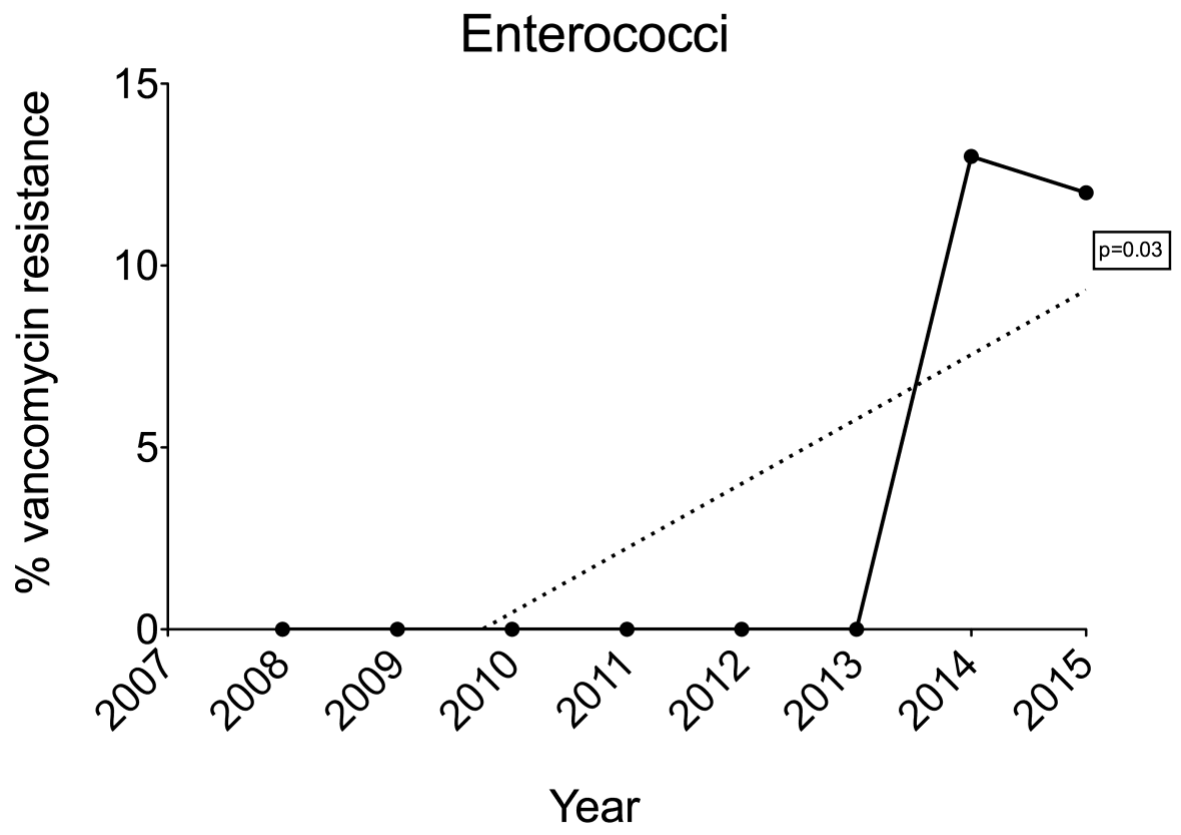


Figure D3
Evolution of cefepime resistance in Gram negative non-fermenters

