

# BMJ Open Is the decline in neonatal mortality in northern Ghana, 1996–2012, associated with the decline in the age of BCG vaccination? An ecological study

Paul Welaga,<sup>1,2</sup> Cornelius Debpuur,<sup>1</sup> Peter Aaby,<sup>3</sup> Abraham Hodgson,<sup>4</sup> Daniel K Azongo,<sup>1</sup> Christine S Benn,<sup>2,5</sup> Abraham Rexford Oduro<sup>1</sup>

**To cite:** Welaga P, Debpuur C, Aaby P, *et al.* Is the decline in neonatal mortality in northern Ghana, 1996–2012, associated with the decline in the age of BCG vaccination? An ecological study. *BMJ Open* 2018;**8**:e023752. doi:10.1136/bmjopen-2018-023752

► Prepublication history and additional material for this paper are available online. To view these files, please visit the journal online (<http://dx.doi.org/10.1136/bmjopen-2018-023752>).

Received 22 April 2018

Revised 14 June 2018

Accepted 30 October 2018



© Author(s) (or their employer(s)) 2018. Re-use permitted under CC BY-NC. No commercial re-use. See rights and permissions. Published by BMJ.

<sup>1</sup>Navrongo Health Research Centre, Navrongo, Ghana

<sup>2</sup>OPEN, Institute of Clinical Research, University of Southern Denmark, Denmark

<sup>3</sup>Bandim Health Project, Indepth Network, Bissau, Guinea-Bissau

<sup>4</sup>Research and Development Division, Ghana Health Service, Accra, Ghana

<sup>5</sup>CVIVA, Research Centre for Vitamins and Vaccines, Bandim Health Project, Statens Serum Institut, Copenhagen S, Denmark

## Correspondence to

Paul Welaga;  
pwelaga@yahoo.com

## ABSTRACT

**Objective** To examine the association between early Bacille Calmette-Guerin (BCG) vaccination and neonatal mortality in northern Ghana.

**Methods** This ecological study used vaccination and mortality data from the Navrongo Health and Demographic Surveillance System. First, we assessed and compared changes in neonatal mortality rates (NMRs) and median BCG vaccination age from 1996 to 2012. Second, we compared the changes in NMR and median BCG vaccination age from 2002 to 2012 by delivery place when data on delivery place were available.

**Results** Neonatal mortality rates declined from 46 to 12 per 1000 live births between 1996 and 2012 (trend test:  $p < 0.001$ ). Within the same period, median BCG vaccination age declined from 46 to 4 days (trend test:  $p < 0.001$ ). Among home deliveries, BCG vaccination age declined from 39 days in 2002 to 7 days in 2012 (trend test:  $p < 0.001$ ) and neonatal mortality declined by 24/1000 (trend test:  $p < 0.001$ ). Among health facility deliveries, BCG vaccination age was stable around 3 days from 2002 to 2012 (trend test:  $p = 0.49$ ) and neonatal mortality declined by 9/1000 (trend test:  $p = 0.04$ ). In a small study of children whose vaccination cards were inspected within the first 28 days of life, the HR for BCG-vaccinated compared with BCG-unvaccinated children was 0.55 (95% CI 0.12 to 2.40).

**Conclusion** The data support the hypothesis that early BCG vaccination may be associated with a decrease in neonatal mortality. However, as suggested by WHO, randomised control trials are required to address the question of whether there is indeed a causal association between early BCG vaccination and neonatal mortality.

## INTRODUCTION

Bacille Calmette-Guerin (BCG) for tuberculosis (TB) control is one of the most widely used vaccines worldwide in low-income countries.<sup>1</sup> The Expanded Programme on Immunization (EPI) in Ghana recommends that BCG be given at birth.<sup>2</sup> However, due to the cost of vaccines, implementation challenges by health authorities as well as individual and household level factors, BCG vaccination is often delayed.<sup>3</sup>

## Strengths and limitations of this study

- We used routine vaccination and survival data collected over a 17-year period from a large Health and Demographic Surveillance System site in Ghana.
- We assessed and compared changes in neonatal mortality rates and median Bacille Calmette-Guerin (BCG) vaccination age from 1996 to 2012 to assess the association between BCG vaccination age and neonatal mortality.
- This was mainly an ecological population-based study where exposures and outcomes were not directly linked.
- A small study using individual-level data to assess the association between BCG vaccination age and neonatal mortality was underpowered and under-reporting of BCG vaccination status and other limitations may have affected the accuracy of our estimates.

Observational studies and randomised control trials (RCTs) suggest that BCG vaccination may have non-specific survival benefits for children.<sup>4–7</sup> In three RCTs among low-birthweight neonates in Guinea-Bissau,<sup>4,7</sup> BCG vaccination was associated with a 38% (95% CI 17% to 54%) reduction in neonatal mortality. The reduction in mortality was mainly due to fewer cases of neonatal sepsis and respiratory infections. Thus, BCG vaccination might have beneficial effects on child health outcomes in the first month of life that are not explained by protection against TB. Immunological studies have recently shown that BCG vaccines can train the innate immune system via epigenetic modifications at the monocyte level.<sup>8</sup> This could possibly provide a mechanism whereby early BCG administration could modulate a child's ability to combat subsequent unrelated infections.

Even though child mortality is declining globally, millions of children still die every

year before their fifth birthday and infections account for a large proportion of these deaths.<sup>9</sup> More than 40% of these deaths occur within 28 days after birth (neonatal period), and this is a burden borne disproportionately by low-income and middle-income countries. While under-five mortality is declining, neonatal mortality appears to be declining at a much slower rate.<sup>10</sup> There is therefore reason to examine whether better use of BCG could contribute to lower neonatal mortality.

In 2014, the WHO's Strategic Advisory Group of Experts on Immunization conducted a comprehensive review of the potential non-specific effects of vaccines and concluded that BCG may be associated with non-specific survival benefits.<sup>11</sup> The WHO has been advocating for improved vaccination coverage levels. What is often not emphasised is the importance of timely administration of vaccines. To assess whether early BCG vaccination could be associated with a decrease in neonatal mortality, we examined the relationship between age at BCG vaccination and neonatal mortality using Health and Demographic Surveillance System (HDSS) data and routine vaccinations data of children from 1996 to 2012 in a mainly rural community in northern Ghana. We also examined the factors that are associated with the timing of BCG vaccination.

## MATERIALS AND METHODS

### Study setting

The study was conducted in the Kassena-Nankana East municipal and Kassena-Nankana West district in the Upper East region of northern Ghana with an estimated population of about 160 000 under continuous demographic surveillance. The study area covers a land area of 1675 km<sup>2</sup> and lies between latitude 10.30° and 11.10° north and longitude 1.10° west close to the Burkina Faso border. It has 1 main hospital (War Memorial Hospital) that serves as a referral hospital to nine clinics or health centres and 45 Community Health Compounds located mostly in rural communities and manned by trained nurses who provide basic healthcare as well as routine vaccinations. Previous analysis of causes of neonatal deaths in the study area showed that 32% of the causes were from infections, 21% from birth injury and asphyxia and 18% from prematurity, making these three the leading causes of neonatal deaths in the area.<sup>12</sup>

### Vaccination data

Routine vaccination data from 1996 to 2012 collected by the Navrongo HDSS were used for the analyses.<sup>13 14</sup> Between 1996 and 2010, vaccination data were collected once annually from health cards of children <2 years of age, except in 2001 when the HDSS failed to collect vaccination data. From 2011 to 2012, vaccination data were updated every 4 months for children aged 3 years or younger. The HDSS field teams visited all households 3–4 times a year during the period of the study from 1996 to 2012 to document demographic events such as new

births, deaths and migrations. Data on educational attainment and household possessions are documented as part of the HDSS operations.

### BCG vaccine strains used in Ghana

Even though Ghana introduced routine BCG vaccination into its EPI programme in 1978, accurate data on BCG strains used in Ghana from 1978 to 2006 are not available.<sup>15</sup> The following BCG strains were used for vaccination in Ghana: 2007, BCG-Danish, produced by Danish Statens Serum Institute; 2008 to 2009, the BCG-Russia, produced by Bulbio; and from 2010 to 2012, BCG-Japan, produced by Japan BCG Laboratory.<sup>15</sup>

### Statistical methods

Data were analysed using STATA V.12.1. To assess the association between median BCG vaccination age and neonatal mortality, we calculated yearly neonatal mortality rates (NMRs) per 1000 live births for children born in the study area from 1996 to 2012. We also calculated median BCG vaccination age by birth year from 1996 to 2012. Trends in NMR and median BCG vaccination age were assessed to identify any association for children delivered in health facilities and at home, respectively.

We carried out an individual-level analysis of children delivered at home and visited in the first 28 days of life using a Cox regression model to examine any association between their BCG vaccination status and subsequent neonatal mortality. We adjusted for socioeconomic status (wealth index), sex, maternal age, maternal education, interview year and season of birth. The wealth index was computed using principal component analysis from household assets as an estimate of household socioeconomic status. The household assets included several separate items, from large to medium assets (eg, land, car and motorbike ownership) to smaller household items (eg, radio, fan ownership). The children were categorised into BCG-vaccinated and BCG-unvaccinated based on BCG vaccination status in their health cards. Children with health cards and recorded BCG vaccination dates were classified as BCG-vaccinated. Those with no health card or no record of BCG vaccination on their vaccination card were categorised as BCG-unvaccinated. Children whose vaccination cards were not seen or those we did not meet at the time of the home visit were excluded from the substudy analysis. There was no loss to follow-up in the individual-level study. The exposure data (vaccination status) were collected before the occurrence of the outcome for all participants. The criterion for inclusion was that a child should first be visited and be alive at the time of the visit in the first 28 days after birth. It was only in subsequent visits that an outcome could be assessed. The exposure data (vaccination) and the outcome data (survival) were independently collected, in most cases, by different fieldworkers.

Virtually all deliveries in health facilities were vaccinated, and we did not have complete data on delivery place for the entire period of the study. Data on place of

delivery were only available from 2002. In addition, other background characteristics including access to health-care of the children delivered in health facilities, which we could not measure in this study, may be different from those delivered at home. We therefore limited the analysis to home deliveries, which are likely to have the same background characteristics including health-seeking behaviour and access to healthcare. To reduce survival bias,<sup>16</sup> neonatal mortality was assessed prospectively using the landmark approach from the date of visit until the child was 28 days of age. Survival bias leads to differential misclassification of vaccine status because children who survive have better information than those who died during follow-up because health cards for dead children were often not available for inspection. With incomplete vaccine information for dead children, vaccination becomes automatically associated with a strong beneficial effect. In the landmark approach, only vaccine information collected on the date of visit is used, and the vaccine status becomes a time-fixed variable during follow-up in the analysis. This approach gives conservative estimates.<sup>16</sup>

### Patient and public involvement

Patients were not involved in developing the hypothesis, the specific objectives or the research questions. They were also not involved in the design of the survey instruments or conduct of the study. No patients were involved in the interpretation of study results or write up of the manuscript. There are no plans to disseminate the results of the research to study participants or the relevant study community.

## RESULTS

In all, we recorded 67 431 live births and 1753 neonatal deaths (2.6%) over the period from 1996 to 2012. **Table 1** describes the demographic characteristics of neonates and mothers included in the population-based study. Within the period of the analysis, median BCG vaccination age declined from 46 days in 1996 to 4 days in 2012 (**figure 1**). The proportion of children vaccinated in day one after birth increased from 8% in 1996 to 33% in 2012 (**table 2**). In the same period, NMR declined from 46 per 1000 live births in 1996 to 12 per 1000 live births in 2012 (trend test:  $p < 0.001$ ) (**figure 1**). In the first week of life, mortality for days 2–7 declined from 16/1000 to 7/1000 (trend test  $p < 0.001$ ); after the first week of life, the mortality declined to 1/8, from 16/1000 to 2/1000 live births (trend test  $p < 0.001$ ) (**table 2**).

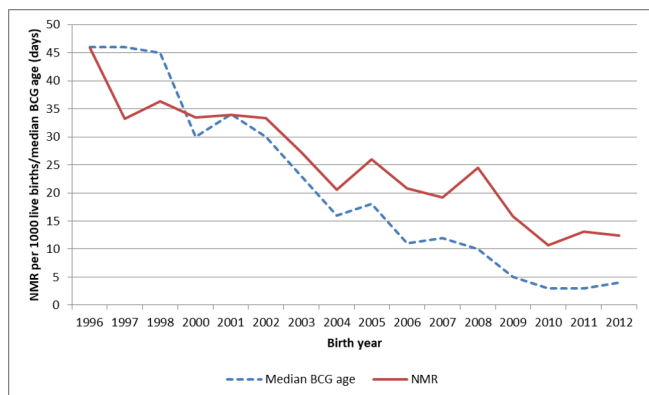
During the period of this study, no neonatal death was recorded from TB. An analysis of the trends in the causes of neonatal deaths and the cause-specific mortality rates during different periods of the study from 1996 to 2012 showed that the decline in the cause-specific mortality rates for infections was stronger compared with prematurity and birth injury, particularly after the first week of life (online supplementary table 1).

**Table 1** Demographic characteristics of neonates and mothers included in the population-based study in Navrongo Health and Demographic Surveillance System: 1996–2012

Variable	Number	%
<b>Sex</b>		
Female	33 606	49.8
Male	33 825	50.2
<b>Season of birth</b>		
Dry	37 411	55.5
Rainy	30 020	44.5
<b>Year of birth</b>		
1996	4222	6.3
1997	4277	6.3
1998	3828	5.7
1999	4103	6.1
2000	4352	6.5
2001	4011	5.9
2002	3967	5.9
2003	4060	6.0
2004	3923	5.8
2005	3732	5.5
2006	3744	5.6
2007	3960	5.9
2008	3640	5.4
2009	3782	5.6
2010	3910	5.8
2011	3957	5.9
2012	3963	5.9
<b>Maternal education</b>		
No education	27 175	40.3
Primary	21 263	31.5
Junior secondary school/ middle school	10 667	15.8
Secondary	4535	6.7
Tertiary	1711	2.5
Missing	2080	3.2
<b>Maternal age</b>		
<20	8090	12.0
20–34	42 971	63.7
35–	15 743	23.4
Missing	627	0.9

### BCG vaccination age by place of delivery

**Table 3** describes the decline in median BCG vaccination age by place of delivery from 2002 when this information was first collected. The decline in age of BCG vaccination was a dual process. First, the proportion of health facility deliveries increased from 28% in 2002 to 88% in 2012,



**Figure 1** Trends in median Bacille Calmette-Guerin (BCG) vaccination age and neonatal mortality in Navrongo Health and Demographic Surveillance System: 1992–2012. NMR, neonatal mortality rate.

and these children were vaccinated early; the median BCG vaccination age in health facilities was around 3 days throughout the period. Second, the age at BCG vaccination decreased also among home deliveries, the median BCG vaccination age for home deliveries declined from 39 days in 2002 to 7 days in 2012 (table 3). Overall, the BCG coverage between children aged 2–23 months was high for both health facility and home deliveries throughout the period. BCG coverage for home deliveries increased from 89% in 2002 to 99% in 2012. Among health facility deliveries, BCG coverage was around 100% throughout the period from 2002 to 2012.

### Decline in NMR among home and health facility deliveries

The decline in BCG vaccination age and in NMR among home deliveries was much faster than what was observed among health facility deliveries (figure 2). In the 2002–2012 period, NMR among home deliveries declined by 24/1000, that is, from 37/1000 in 2002 to 13/1000 live births in 2012 (table 3) (trend test:  $p < 0.001$ ). For health facility deliveries, the decline in NMR was 9/1000, that is, from 22/1000 in 2002 to 13/1000 live births in 2012 (trend test:  $p = 0.04$ ). The decline in NMR among home deliveries was faster than among health facility deliveries, though the difference in their slopes was not statistically significant ( $-1.85$  for home deliveries compared with  $-1.41$  for facility deliveries,  $p = 0.52$ ).

Since previous studies have suggested that BCG may have stronger beneficial effects for girls than for boys,<sup>17 18</sup> we examined the decline in NMR by sex (online supplementary table 2). Among home deliveries, the NMR for girls declined from 37/1000 in 2002 to 8/1000 live births in 2012 (trend test:  $p = 0.007$ ), whereas it declined from 37 per 1000 live births to 20 per 1000 live births for boys (trend test:  $p = 0.26$ ). However, though the trend was significant in its own right among girls, but not among boys, there was no statistically significant difference between the two sexes (slope:  $-1.21$  for girls compared with  $-0.56$  for boys,  $p = 0.29$ ). In the substudy with individual-level data, the HR for BCG-vaccinated boys versus BCG-unvaccinated boys was 0.92 (0.20–4.25), and for girls, the HR was zero due to no death among the BCG-vaccinated girls; test of interaction ( $p = 1.00$ ).

**Table 2** Median Bacille Calmette-Guerin (BCG) vaccination age and neonatal mortality rates (NMRs) in Navrongo Health and Demographic Surveillance System (HDSS): 1996–2012

Birth year	Median BCG age (days)	BCG			BCG			BCG			
		Births	Deaths	NMR	Days 0–28	Day 1	Day 1	Days 2–7	Days 2–7	Day 8–28	MR Days 8–28
1996	46	4222	195	46	34	8	15	11	16	16	16
1997	46	4277	144	34	37	8	13	11	9	18	12
1998	45	3828	141	37	36	9	14	8	10	19	13
1999	34	4103	103	25	45	11	8	11	9	23	9
2000	30	4352	148	34	47	12	14	12	10	23	10
2001	34	4011	138	34	45	10	15	11	9	24	10
2002	30	3967	134	34	49	12	11	12	11	24	12
2003	23	4060	116	29	57	15	10	17	10	25	8
2004	16	3923	81	21	66	18	7	17	6	31	8
2005	18	3732	97	26	61	15	10	18	7	28	9
2006	11	3744	83	22	73	18	8	24	4	31	10
2007	12	3960	78	20	71	16	10	23	5	31	5
2008	10	3640	91	25	76	17	7	27	11	32	6
2009	5	3782	60	16	91	27	6	37	5	26	5
2010	3	3910	43	11	93	39	4	31	3	23	4
2011	3	3957	52	13	94	38	5	34	5	21	3
2012	4	3963	49	12	94	33	4	38	7	23	2

BCG, proportion BCG vaccinated; MR, mortality rates.



**Table 3** Median Bacille Calmette-Guerin (BCG) vaccination age and neonatal mortality rates (NMRs) by place of delivery

Birth year	Home delivery					Health facility delivery			
	Proportion delivered in health facility	Median BCG age	NMR 0–28 days	Proportion BCG vaccinated 0–7 days	MR 8–28 days	Median BCG age	NMR 0–28 days	Proportion BCG vaccinated 0–7 days	MR 8–28 days
2002	28	39	37	9	14	3	22	64	6
2003	31	34	27	13	9	3	29	72	8
2004	34	25	22	17	9	2	17	71	4
2005	38	25	24	21	6	6	28	54	14
2006	36	17	20	27	9	3	27	67	12
2007	42	20	20	22	5	4	18	63	3
2008	50	20	22	23	5	4	29	64	9
2009	64	9	14	43	4	3	17	79	5
2010	74	8	15	49	7	2	8	79	2
2011	84	7	16	54	2	2	13	78	3
2012	88	7	13	51	4	3	13	75	2

MR, mortality rates.

### BCG vaccination status and subsequent neonatal mortality

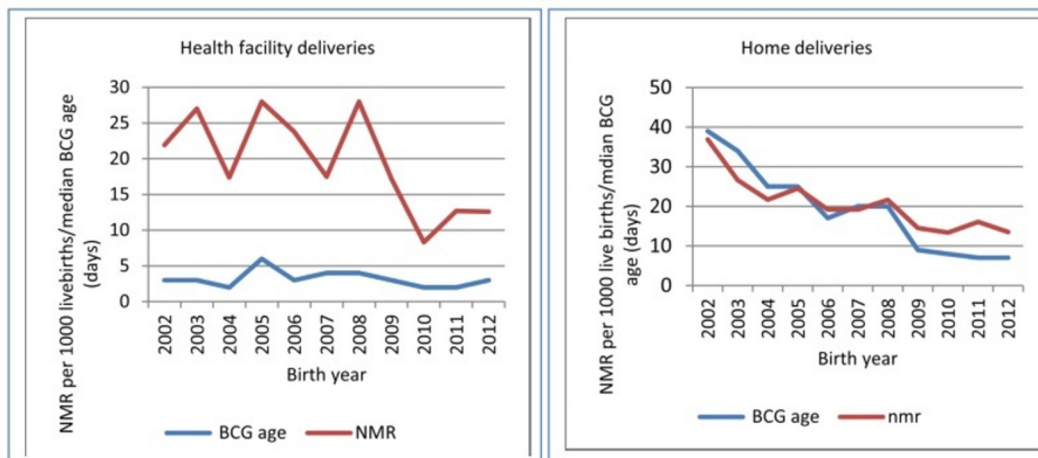
For the substudy of children seen in the first month of life, we examined whether BCG vaccination status was associated with subsequent neonatal mortality; 4910 children delivered at home and visited within the first 28 days after delivery were included in the analysis. There was under-reporting of BCG vaccination at the neonatal visits and the comparison was therefore not very precise; nearly 20% of the children classified as ‘BCG-unvaccinated’ at the first home visit were found to have been BCG-vaccinated before the first survey date using data from later follow-up visits (online supplementary table 3). This inconsistency in reporting is probably due to the cultural tradition of secluding the mother and newborn child during the first months after delivery. The neonatal mortality rate among BCG-unvaccinated children was 147/1000 compared with 81/1000 person-years for BCG-vaccinated children, the

adjusted HR being 0.55 (0.12–2.40) for BCG-vaccinated compared with BCG-unvaccinated (table 4).

### Effect of the health system on time to BCG vaccination

#### Community-based Health Planning and Services

The Community-based Health Planning and Services (CHPS) became a national healthcare delivery policy in Ghana in the beginning of the new century.<sup>19</sup> CHPS was originally tested in Navrongo from 1994 to 2003. The study was a quasi-experimental trial designed to test the relative impact of different strategies for introducing community health services in the communities.<sup>20</sup> Trained nurses were relocated into rural communities to provide basic healthcare including routine vaccinations to children. The study area was divided into four experimental cells. Cell 1 had community health volunteers (CHVs) only, cell 2 had trained nurses called community health



**Figure 2** Trends in median Bacille Calmette-Guerin (BCG) vaccination age and neonatal mortality rates (NMRs) by home and health facility deliveries in Navrongo Health and Demographic Surveillance System: 2002–2012.

**Table 4** Mortality rates (MRs) and HRs from time of home visit up to 28 days of life among home deliveries

Variable	Number (%)	MR/1000 person-years (death/total)	HR (year adjusted)	HR (fully adjusted)*
<b>BCG status at time of home visit</b>				
BCG-unvaccinated	4049 (82.5)	147 (26/177)	Ref	Ref
BCG-vaccinated	861 (17.5)	81 (2/25)	0.54 (0.12–2.33)	0.55 (0.12–2.40)
<b>Maternal education</b>				
No education	4147 (84.5)	135 (23/170)	Ref	Ref
Primary/JSS	590 (12.0)	159 (4/25)	1.20 (0.42–3.48)	1.00 (0.34–2.98)
Secondary/tertiary	154 (3.1)	174 (1/6)	1.12 (0.15–8.31)	1.41 (0.19–10.55)
Missing	4 (0.4)	0 (0/1)		
<b>Sex of child</b>				
Male	2440 (49.7)	170 (17/100)	Ref	Ref
Female	2470 (50.3)	109 (11/101)	0.65 (0.30–1.38)	0.64 (0.30–1.37)
<b>Wealth index</b>				
Poorest	1718 (35.0)	155 (11/71)	Ref	Ref
Poorer	1323 (27.0)	201 (11/55)	1.27 (0.55–2.93)	1.23 (0.53–2.85)
Poor	1066 (21.7)	91 (4/44)	0.57 (0.18–1.8)	0.55 (0.18–1.74)
Less poor	709 (14.4)	71 (2/28)	0.42 (0.09–1.91)	0.42 (0.09–1.92)
Least poor	73 (1.5)	0 (0/3)	–	–
Missing	21 (0.4)	0 (0/1)	–	–
<b>Season of birth</b>				
Dry	2643 (53.8)	120 (13/108)	Ref	Ref
Rainy	2267 (46.2)	161 (15/93)	1.18 (0.56–2.50)	1.20 (0.57–2.54)
<b>Maternal age</b>				
<20	459 (9.4)	322 (6/19)	3.38 (1.09–10.53)	3.38 (1.06–10.76)
20–34	2989 (60.8)	130 (16/123)	Ref	Ref
37+	1464 (29.8)	100 (6/60)	1.33 (0.52–3.40)	1.32 (0.51–3.40)

\*Adjusted for socioeconomic status (wealth index), sex, season of birth, maternal age, maternal education and interview year. BCG, Bacille Calmette-Guérin; JSS, Junior Secondary School.

officers (CHOs) only, cell 3 had both CHOs and CHVs, and cell 4 had no interventions.

As seen in [table 5](#), the decline in BCG vaccination age and the increase in the proportion of health facility delivery happened more quickly in the intervention communities compared with the non-intervention communities.

#### BCG phial open policy

Children in Ghana should receive BCG vaccination at birth. Even though health workers are expected to open a BCG phial if only one child is qualified to be vaccinated, this is often not done to reduce wastage. In the region where this study was conducted, in early 2009 the health authorities insisted on health workers to open a BCG phial even if only one child was present for vaccination. As seen in [figure 3](#), there was a sharp increase in the proportion of children vaccinated in the first 7 days of life from 44% in 2008 to 65% in 2009. Neonatal mortality also declined further in the same period.

#### DISCUSSION

BCG vaccination age declined remarkably from a median age of 46 days in 1996 to 4 days in 2012. In the same period, neonatal mortality rates also declined from 46 to 12 per 1000 live births. The decline in BCG vaccination age among home deliveries was much faster than health facility deliveries where BCG vaccination age remained fairly constant over the period. In parallel, the neonatal mortality decline was much faster for home deliveries compared with health facility deliveries. Though the individual-level analysis was of limited quality and provided a conservative estimate, because some children classified as ‘unvaccinated’ had received BCG already and more received BCG during follow-up, it also pointed to a reduced risk of neonatal death in BCG-vaccinated compared with BCG-unvaccinated children.

The decline in BCG vaccination age could be attributed to two processes; increasing proportions of women delivering at health institutions and the age at BCG vaccination decreasing among home deliveries. Children delivered

**Table 5** Age at Bacille Calmette-Guerin (BCG) vaccination and neonatal mortality rates (NMRs) comparing villages with community nurses and control villages with no intervention

Birth year	Volunteers only (cell 1)			Community nurses (cells 2 and 3)			No intervention (cell 4)		
	Median BCG age	Health facility delivery (%)	NMR	Median BCG age	Health facility delivery (%)	NMR	Median BCG age	Health facility delivery (%)	NMR
1996	27		41	38		47	81		48
1997	24		28	34		34	87		36
1998	30		45	36		34	74		38
1999	18		13	25		27	65		28
2000	18		36	26		30	65		40
2001	14		34	27		31	70		41
2002	11	39	26	19	36	31	68	12	42
2003	7	43	20	14	38	27	51	14	35
2004*	7	49	13	10	41	16	40	16	32

\*From 2004 to 2005, the intervention (cell 3) of placing nurses in communities was extended to all the cells in the study area. Information place of delivery is only available from 2002.

in health facilities are expected to be vaccinated with BCG before being discharged. However, health workers sometimes refuse to open the BCG phial if there are few children in the facility for BCG vaccination. Instead, they rather recommend that mothers and children return on a scheduled date; on such dates, several children would then be present, and vaccine wastage would be reduced. In early 2009, the health authorities in the region instituted a policy to open the BCG phial even if it involved just one child (figure 3). This might have contributed to the decline in BCG vaccination age as children who were not even born in health facilities would have the opportunity to be vaccinated on first contact with a health facility. The CHPS programme, which was tested in the study area, also contributed to the decline in age at BCG vaccination. Community health officers and community health nurses resident in the community were able to visit mothers at home to deliver vaccines. Getting the

vaccination programme to function efficiently to ensure that BCG vaccines are administered early after birth could possibly help to reduce neonatal mortality.

### Interpretation

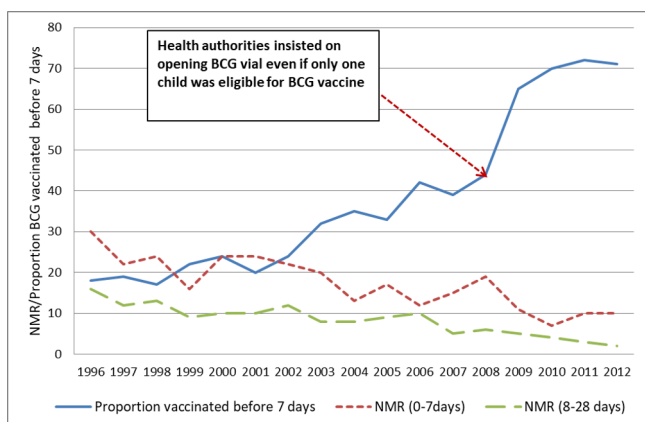
The parallel decline in mortality rates and BCG vaccination age could be a coincidence. However, there are several reasons why the results suggest that the decline in mortality rates over the period may be associated with the decline in BCG vaccination age.

First, neonatal mortality declined to almost 1/4 from 46 to 12 per 1000 live births over the period of the analysis. The strongest decline occurred after the first week of life when the children might have received BCG. The decline was stronger for infections than for other causes of neonatal death.

Second, the decline was much faster among home deliveries, where the BCG vaccination age declined rapidly, compared with health facility deliveries, where BCG vaccination age remained the same around 3 days of life.

Third, the neonatal mortality rates showed some major declines from 1998 to 1999, 2002–2004; 2005–2006 and 2008–2010 (table 2). Notably, similar declines in BCG vaccination age were observed within the same periods.

Fourth, though based on small numbers, the individual-level analysis involving the small number of home deliveries seen alive and visited before they were 28 days supported that BCG vaccinated had a possible reduced risk of neonatal death compared with BCG-unvaccinated children. The individual-level analysis provided a direct measure of exposure and outcome, and the findings support what we observed at the population level. The survival analysis was done using a landmark approach to reduce survival bias. About 43% of the children classified as BCG-unvaccinated received BCG during the neonatal period using data from follow-up visits. Furthermore, we



**Figure 3** Proportion Bacille Calmette-Guerin (BCG) vaccinated at 0–7 days and neonatal mortality rates (NMRs) in Navrongo Health and Demographic Surveillance System: 1996–2012.

noted that there was under-reporting of BCG vaccination at home visits in the neonatal period. Culturally, mothers and their newborns in this study area are often kept away from the public and are most of the time indoors during the first month after delivery. We suspect fieldworkers who visited these households so early after delivery were most likely given convenient answers to prevent them from having access to the mother and the baby. We think this is most likely the reason for under-reporting of BCG vaccination in the first month of life.

Nonetheless, the effect size was similar to that observed in three RCTs in Bissau, where BCG vaccination was associated with a 38% reduction in neonatal mortality.<sup>47</sup>

The RCTs of BCG on neonatal mortality were done in low birthweight infants. Our population-based study supports a possible beneficial non-specific effect of BCG vaccination in normal-birthweight children in Africa. Kleinnijenhuis *et al* offered an immunological explanation for the beneficial non-specific effects of BCG by showing that BCG induces heterologous protection against unrelated pathogens via epigenetic reprogramming of monocytes.<sup>8</sup>

Our results should be interpreted with caution because exposures and outcomes were not directly linked, and it is difficult to separate BCG vaccination-related effects from other potential confounders and interventions. However, the findings are important in explaining the declining mortality patterns and for further investigation and intervention.

Other factors might have accounted for the decline in neonatal mortality rates over the period. Some of these factors include improvement in the healthcare delivery system (availability of better obstetric care, better primary healthcare services), demographic changes (fewer number of children per household), general improvement in the economy of the area (improved income levels, infrastructure, maternal education, employment), improvement in the nutritional status of neonates, etc.

This was largely an ecological study, and ecological fallacy may be a major challenge in making causal inference on the individual level in this study. In the small observational study of individual-level data, we were limited with respect to the number of confounders that we could adjust for due to lack of data. There are likely many unmeasured differences between the BCG vaccinated and unvaccinated children. For example, it is possible that BCG vaccinated children could have benefited from some form of care or counselling from health workers at the time of vaccination that this study could not document. We were also limited on the number of children included at the individual-level analysis due to the strict inclusion criteria of first visiting the child in the first 28 days of life. The likely uncontrolled confounders and low statistical power could have affected our risk estimates. In addition, the study included neonates from largely a rural population in Northern Ghana, which may limit the

generalisability of the study results to other settings. It is unclear whether similar results would be observed in different settings.

There has not been any recorded policy to delay or withhold BCG vaccination from severely ill young neonates in the period of this study in the study area. Even though we could not assess the degree to which BCG vaccination was delayed or withheld, it was possible that some health workers or mothers could have decided to delay or withhold BCG vaccination due to severe illness, even though this is not an official policy. Therefore, the possibility of reverse causality as a possible partial explanation for the observed association between early BCG vaccination and neonatal mortality cannot be ruled out. However, the unvaccinated group should have become an increasingly select frail group as the vaccination coverage increased and the mortality rate among unvaccinated children should therefore have increased over time. This did not happen (online supplementary table 4), and we therefore do not think that reverse causality is the predominant explanation.

To address the question on whether BCG has non-specific beneficial effects on infant survival, SAGE established a working group on non-specific effects of BCG, DTP and measles vaccine. The WHO immunisation and vaccines-related implementation research advisory committee (IVIR-AC) concluded that RCTs were indeed required to resolve the question.<sup>21</sup> WHO recently circulated a call for public comments on draft protocols of clinical trials to assess any non-specific effects of BCG and measles vaccine.<sup>21 22</sup>

The WHO recommends BCG vaccination at birth. Funders should consider monitoring local implementation practices to ensure that wastage management of vaccines does not delay BCG vaccination. Individual health facilities may consider constructing a process map or use of continuous quality improvement methodology to learn about the barriers to timely administration of BCG to all eligible infants. BCG programmes are usually evaluated by vaccination coverage in children aged 12–23 months. Importantly, it is clear from the present study this evaluation would not capture the striking differences in the timing of BCG vaccination between health facility and home deliveries.

In conclusion, the present study supports a possible beneficial non-specific effect of early BCG vaccination on neonates and suggests that the tremendous reduction in neonatal mortality in northern Ghana during the last decades may partly be explained by efforts to decrease BCG vaccination age. However, as suggested by WHO, further RCTs may be required to address the question of whether there is indeed a causal association between early BCG vaccination and neonatal mortality.

**Acknowledgements** The authors thank Peter Wontuo, Felix Kondayire, George Wak and the rest of the field and computing staff of the Navrongo HDSS for collecting and processing the data. They also thank INDEPTH Network for coordinating some of the project activities.



**Contributors** PW and PA proposed the present analysis. PW, CD, PA, AH, DA, CSB and ARO supervised the data collection. PW conducted the analysis and wrote the first draft of the paper. PW, CD, PA, ARH, DA, CSB and ARO contributed with comments and approved the final version of the paper.

**Funding** This work was supported by the Navrongo Health Research Centre, DANIDA (grant: 104.Dan.8-920) and European Union FP7 support for OPTIMUNISE (grant: Health-F3-2011-261375).

**Competing interests** None declared.

**Patient consent for publication** Not required.

**Ethics approval** The study was reviewed and approved by the institutional review board of the Navrongo Health Research Centre.

**Provenance and peer review** Not commissioned; externally peer reviewed.

**Data sharing statement** No additional data are available.

**Open access** This is an open access article distributed in accordance with the Creative Commons Attribution Non Commercial (CC BY-NC 4.0) license, which permits others to distribute, remix, adapt, build upon this work non-commercially, and license their derivative works on different terms, provided the original work is properly cited, appropriate credit is given, any changes made indicated, and the use is non-commercial. See: <http://creativecommons.org/licenses/by-nc/4.0/>.

## REFERENCES

- Dye C. Making wider use of the world's most widely used vaccine: Bacille Calmette-Guérin revaccination reconsidered. *J R Soc Interface* 2013;10:20130365.
- Profile: Ghana's expanded programme on immunization in Ghana. [http://www.who.int/countries/gha/publications/EPI\\_Profile.pdf](http://www.who.int/countries/gha/publications/EPI_Profile.pdf) (Assessed 17 Dec 2017).
- Olusanya BO. Pattern and determinants of BCG immunisation delays in a sub-Saharan African community. *Health Res Policy Syst* 2010;8:1.
- Aaby P, Roth A, Ravn H, *et al*. Randomized trial of BCG vaccination at birth to low-birth-weight children: beneficial nonspecific effects in the neonatal period? *J Infect Dis* 2011;204:245–52.
- Kabir Z. Is all-cause mortality a useful epidemiological endpoint in vaccine trials? An example of BCG (Bacille-Calmette-Guérine). *Int J Epidemiol* 2003;32:161–2.
- Roth A, Jensen H, Garly ML, *et al*. Low birth weight infants and Calmette-Guérin bacillus vaccination at birth: community study from Guinea-Bissau. *Pediatr Infect Dis J* 2004;23:544–50.
- Biering-Sørensen S, Aaby P, Lund N, *et al*. Early bcg-denmark and neonatal mortality among infants weighing <2500 g: A randomized controlled trial. *Clin Infect Dis* 2017;65:1183–90.
- Kleinnijenhuis J, Quintin J, Preijers F, *et al*. Bacille Calmette-Guérin induces NOD2-dependent nonspecific protection from reinfection via epigenetic reprogramming of monocytes. *Proc Natl Acad Sci U S A* 2012;109:17537–42.
- Liu L, Johnson HL, Cousens S, *et al*. Global, regional, and national causes of child mortality: an updated systematic analysis for 2010 with time trends since 2000. *Lancet* 2012;379:2151–61.
- Oestergaard MZ, Inoue M, Yoshida S, *et al*. Neonatal mortality levels for 193 countries in 2009 with trends since 1990: a systematic analysis of progress, projections, and priorities. *PLoS Med* 2011;8:e1001080.
- Higgins JP, Soares-Weiser K, López-López JA, *et al*. Association of BCG, DTP, and measles containing vaccines with childhood mortality: systematic review. *BMJ* 2016;355:i5170.
- Welaga P, Moyer CA, Aborigo R, *et al*. Why are babies dying in the first month after birth? A 7-year study of neonatal mortality in northern Ghana. *PLoS One* 2013;8:e58924.
- Ross D, Dollimore N, Smith P, *et al*. Vitamin A supplementation in northern Ghana: effects on clinic attendances, hospital admissions, and child mortality. Ghana VAST Study Team. *Lancet* 1993;342:7–12.
- Binka FN, Bawah AA, Phillips JF, *et al*. Rapid achievement of the child survival millennium development goal: evidence from the Navrongo experiment in Northern Ghana. *Trop Med Int Health* 2007;12:578–83.
- Phillips RO, Phanzu DM, Beissner M, *et al*. Effectiveness of routine BCG vaccination on buruli ulcer disease: a case-control study in the Democratic Republic of Congo, Ghana and Togo. *PLoS Negl Trop Dis* 2015;9:e3457.
- Jensen H, Benn CS, Lisse IM, *et al*. Survival bias in observational studies of the impact of routine immunizations on childhood survival. *Trop Med Int Health* 2007;12:5–14.
- Aaby P, Nielsen J, Benn CS, *et al*. Sex-differential effects on mortality of BCG and diphtheria-tetanus-pertussis vaccines in a rural area with high vaccination coverage: observational study from Senegal. *Trans R Soc Trop Med Hyg* 2016;110:527–33.
- Aaby P, Vessari H, Nielsen J, *et al*. Sex differential effects of routine immunizations and childhood survival in rural Malawi. *Pediatr Infect Dis J* 2006;25:721–7.
- Nyonator FK, Awoonor-Williams JK, Phillips JF, *et al*. The Ghana community-based health planning and services initiative for scaling up service delivery innovation. *Health Policy Plan* 2005;20:25–34.
- Binka FN, Nazzari A, Phillips JF. The Navrongo Community Health and Family Planning Project. *Stud Fam Plann* 1995;26:121–39.
- World Health Organization. Immunization, vaccines and biologicals. [http://www.who.int/immunization/research/implementation/nse\\_protocol\\_comments/en](http://www.who.int/immunization/research/implementation/nse_protocol_comments/en) (Assessed 17 Dec 2017).
- World Health Organization: [http://www.who.int/immunization/research/implementation/Synopsis\\_BCG\\_Study\\_protocol\\_2\\_April\\_17.pdf?au=1](http://www.who.int/immunization/research/implementation/Synopsis_BCG_Study_protocol_2_April_17.pdf?au=1) (Assessed 17 Dec 2017)