

Supplementary table 1. Individual list of cases with baseline putamen binding on the most affected side, and the pre-scan, post-scan and follow-up diagnoses.

Age	Putamen binding (%)*	Pre-scan diagnosis	Post-scan diagnosis	Follow-up diagnosis
52	-93%	FUNCTIONAL	NDG PD	NDG PD
71	-91%	NDG PD	NDG PD	NDG PD
69	-90%	NDG PD	NDG PD	NDG PD
45	-89%	NDG UNK	NDG PD	NDG PD
70	-88%	NDG UNK	NDG PD	NDG PD
53	-88%	NDG CBS	NDG PD	NDG PD
66	-87%	NDG PD	NDG PD	NDG PD
54	-87%	NDG PD	NDG PD	NDG PD
53	-86%	NDG PD	NDG PD	NDG PD
63	-85%	NDG PSP	NDG PD	NDG PD
74	-85%	MRT	NDG PD	NDG PD
68	-85%	NDG PD	NDG PD	NDG PD
49	-85%	NDG PD	NDG PD	NDG PD
79	-85%	RUBRAL TREMOR	NDG PD	RUBRAL TREMOR
51	-84%	NDG UNK	NDG PD	NDG PD
64	-84%	FUNCTIONAL	NDG PSP	NDG PSP
65	-83%	NDG PD	NDG PD	NDG MSA
45	-83%	NDG PD	NDG PD	NDG PD
69	-82%	NDG PD	NDG PD	NDG MSA
68	-80%	NDG PD	NDG PD	NDG PD
79	-80%	NDG PD	NDG PD	NDG PD
44	-79%	NDG PD	NDG PD	NDG PD
48	-79%	NDG PD	NDG PD	NDG PD
50	-79%	DRUG INDUCED	NDG PD	NDG PD
65	-79%	VASCULAR	NDG PD	NDG PD
57	-78%	MRT	NDG PD	NDG PD
30	-78%	NDG PD	NDG PD	NDG PD
63	-78%	DYSTONIA	NDG PD	NDG PD
59	-76%	NDG UNK	NDG PD	NDG PD
62	-76%	FUNCTIONAL	NDG PD	NDG PD
46	-72%	NDG PD	NDG PD	NDG PD
58	-72%	DYSTONIA	NDG PD	NDG PD
66	-71%	NDG PD	NDG PD	NDG PD
72	-71%	FUNCTIONAL	NDG PD	NDG PD
48	-69%	NDG PD	NDG PD	NDG PD
67	-69%	DYSTONIA	NDG PD or MSA	NDG MSA
46	-62%	NDG PD	NDG PD	NDG PD
51	-60%	NDG UNK	NDG PD	NDG PD
38	-55%	DYSTONIA	NDG PD	NDG PD

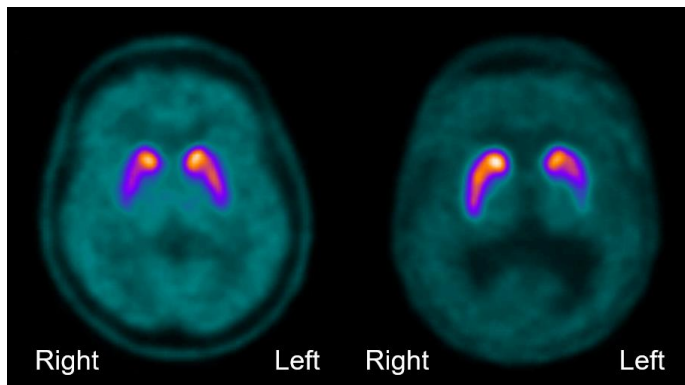
70	-54%	NDG UNK	NDG PD	NDG PD
68	-39%	FUNCTIONAL	FUNCTIONAL	FUNCTIONAL
66	-39%	DRUG INDUCED	DRUG INDUCED	DRUG INDUCED
53	-39%	MRT	NDG PD	NDG UNK
73**	-35%	NDG UNK	NDG PD	NDG PD
57	-27%	NDG PD	DYSTONIA	DYSTONIA
61	-25%	FUNCTIONAL	FUNCTIONAL	FUNCTIONAL
63	-24%	DRUG INDUCED	DRUG INDUCED	DRUG INDUCED
67	-24%	DYSTONIA	DYSTONIA	DYSTONIA
57	-23%	NDG PD	ET	ET
69	-23%	ET	ET	ET
55	-22%	ET	ET	ET
69	-20%	DRUG INDUCED	DRUG INDUCED	DRUG INDUCED
51	-20%	NDG UNK	OTHER	FUNCTIONAL
61	-20%	NDG PD	NDG PD (SWEDD)	NDG PD (SWEDD)
69	-19%	DYSTONIA	DYSTONIA	DYSTONIA
47	-19%	FUNCTIONAL	FUNCTIONAL	FUNCTIONAL
65**	-18%	NDG MSA	NDG MSA	NDG MSA
51	-18%	NDG PD	NDG PD (SWEDD)	NDG PD (SWEDD)
71	-16%	NDG PD	ET	ET
20	-16%	NDG (UNK)	UNK (NEUROGENETIC)	UNK (NEUROGENETIC)
68	-16%	DYSTONIA	LOST TO FOLLOW-UP	ET
61	-16%	NDG AD	NDG AD	NDG AD
68	-13%	ET	ET	ET
63	-11%	NDG PD	ET	FUNCTIONAL
43	-11%	NDG UNK	MRT	MRT
25	-10%	DYSTONIA	DYSTONIA	DYSTONIA
69	-8%	NDG PD	VASCULAR	VASCULAR
72	-6%	DRUG INDUCED	DRUG INDUCED	DRUG INDUCED
38	-5%	NDG PD	FUNCTIONAL	FUNCTIONAL
60	-4%	FUNCTIONAL	FUNCTIONAL	FUNCTIONAL
54	-3%	FUNCTIONAL	FUNCTIONAL	FUNCTIONAL
37	-2%	FUNCTIONAL	FUNCTIONAL	FUNCTIONAL
30	-2%	NDG PD	FUNCTIONAL	FUNCTIONAL
53	2%	DYSTONIA	DYSTONIA	NDG PD
67	5%	FUNCTIONAL	FUNCTIONAL	FUNCTIONAL
63	5%	NDG PD	FUNCTIONAL	FUNCTIONAL
28	7%	NDG PD	UNKNOWN	UNKNOWN
25	19%	FUNCTIONAL	FUNCTIONAL	FUNCTIONAL
51	41%	FUNCTIONAL	FUNCTIONAL	FUNCTIONAL
51	67%	NDG PD	DRUG INDUCED	DRUG INDUCED
43	74%	DYSTONIA	FUNCTIONAL	FUNCTIONAL

Green background denotes cases where clinical diagnosis was concordant with scan result.

Red background denotes cases where clinical diagnosis was discordant with scan result.

* Putamen binding on the most affected side.

** Visual assessment of scan demonstrated significant and asymmetrical reduction in posterior putamen binding compared to caudate binding



NDG = Neurodegenerative

PD = Parkinson's disease

MSA = multiple system atrophy

CBS = Corticobasal syndrome

AD = Alzheimer's disease

MRT = Monosymptomatic resting tremor

UNK = Unknown

ET = Essential tremor