

BMJ Open Cohort profile: the National Health Insurance Service-National Health Screening Cohort (NHIS-HEALS) in Korea

Sang Cheol Seong,¹ Yeon-Yong Kim,² Sue K Park,^{3,4,5} Young Ho Khang,^{6,7} Hyeon Chang Kim,⁸ Jong Heon Park,² Hee-Jin Kang,² Cheol-Ho Do,² Jong-Sun Song,² Eun-Joo Lee,² Seongjun Ha,² Soon Ae Shin,⁹ Seung-Lyeal Jeong²

To cite: Seong SC, Kim Y-Y, Park SK, *et al.* Cohort profile: the National Health Insurance Service-National Health Screening Cohort (NHIS-HEALS) in Korea. *BMJ Open* 2017;7:e016640. doi:10.1136/bmjopen-2017-016640

► Prepublication history and additional material for this paper are available online. To view these files, please visit the journal online (<http://dx.doi.org/10.1136/bmjopen-2017-016640>).

Received 28 February 2017
Revised 20 July 2017
Accepted 26 July 2017



CrossMark

For numbered affiliations see end of article.

Correspondence to
Seung-Lyeal Jeong;
sljeong@nhis.or.kr

ABSTRACT

Purpose The National Health Insurance Service-Health Screening Cohort (NHIS-HEALS) is a cohort of participants who participated in health screening programmes provided by the NHIS in the Republic of Korea. The NHIS constructed the NHIS-HEALS cohort database in 2015. The purpose of this cohort is to offer relevant and useful data for health researchers, especially in the field of non-communicable diseases and health risk factors, and policy-maker.

Participants To construct the NHIS-HEALS database, a sample cohort was first selected from the 2002 and 2003 health screening participants, who were aged between 40 and 79 in 2002 and followed up through 2013. This cohort included 514 866 health screening participants who comprised a random selection of 10% of all health screening participants in 2002 and 2003.

Findings to date The age-standardised prevalence of anaemia, diabetes mellitus, hypertension, obesity, hypercholesterolaemia and abnormal urine protein were 9.8%, 8.2%, 35.6%, 2.7%, 14.2% and 2.0%, respectively. The age-standardised mortality rate for the first 2 years (through 2004) was 442.0 per 100 000 person-years, while the rate for 10 years (through 2012) was 865.9 per 100 000 person-years. The most common cause of death was malignant neoplasm in both sexes (364.1 per 100 000 person-years for men, 128.3 per 100 000 person-years for women).

Future plans This database can be used to study the risk factors of non-communicable diseases and dental health problems, which are important health issues that have not yet been fully investigated. The cohort will be maintained and continuously updated by the NHIS.

INTRODUCTION

The National Health Insurance Service-Health Screening Cohort (NHIS-HEALS) is a cohort of participants who participated in health screening programmes provided by the NHIS in the Republic of Korea (hereafter 'Korea'). The purpose of this cohort is to offer relevant and useful data for a wide range of health researchers.

Strengths and limitations of this study

- It is a cohort with a large sample size, with a relatively low rate of attrition over more than 10 years.
- It contains the date and cause of death, which were determined using the national database and extensive information on healthcare usage regarding inpatient and outpatient visits to healthcare institutions and medication histories.
- Variables on health behaviours are limited since those data were obtained from self-reporting. In addition, the disease diagnoses in the claim data might not accurately reflect patients' medical conditions.

NHIS-HEALS is based on information obtained through the national health screening programmes of Korea. Since 1995, the NHIS has provided general national health screening programmes, including an oral health screening programme, to improve the health status of Koreans through the prevention and early detection of diseases.^{1,2} In 2007, a health screening programme for transitional ages, aimed at those aged 40 and 66 years, was also launched.³ NHIS-HEALS incorporates information from these three major health screening programmes for the adult Korean population (see online supplementary figure 1). All insured adults are eligible for a general health screening programme that is biennially conducted (annually for manual workers). The participation rate in the general health screening programme among the eligible population was 74.8% in 2014.⁴ The general health screening programme can be applied at least once every 2 years for the entire population of Korean adults aged 40 years or older. The healthcare institutions for screening are

Table 1 General characteristics of the National Health Insurance Service-Health Screening Cohort subjects at baseline (2002–2003)

Variables		n	%	
Sex	Men	279 125	54.2	
	Women	235 741	45.8	
Age	40–44	129 979	25.2	
	Mean: 52.641	45–49	107 002	20.8
	SD: 9.635	50–54	80 080	15.6
		55–59	64 952	12.6
		60–64	59 328	11.5
		65–69	41 828	8.1
		70–74	21 615	4.2
75–79	10 082	2.0		
Region	Seoul metropolitan city	89 344	17.4	
	Other metropolitan cities	141 055	27.4	
	Non-metropolitan area	284 467	55.3	
Insurance type	Self-employed insured	197 992	38.5	
	Employed insured	316 359	61.4	
	Medical aid beneficiary	515	0.0	
Disability	No	511 964	99.4	
	Yes	2902	0.6	
No of participants (biennial) in 2002–2013	2002–2003	514 866	100.0	
	2004–2005	334 966	65.1	
	2006–2007	352 158	68.4	
	2008–2009	361 043	70.1	
	2010–2011	364 757	70.9	
	2012–2013	345 693	67.1	
The frequency of biennial screening participation in 2002–2013	6	162 782	31.6	
	5	129 786	25.2	
	4	88 755	17.2	
	3	58 628	11.4	
	2	42 042	8.2	
	1	32 873	6.4	
Risk factors in 2002–2003 (baseline)		Men/Women	Men %/Women%	
Cigarette smoking	Non-smoker	112 577/218 147	42.3/96.2	
	Ex-smoker	41 519/2170	15.6/1.0	
	Current smoker	112 143/6476	42.1/2.9	
Smoking duration	<10 years	18 724/3108	12.2/36.0	
	10–29 years	93 620/3646	60.9/42.2	
	≥30 years	41 318/1892	26.9/21.9	
Alcohol drinking	Rarely	96 441/189 721	35.1/82.5	
	2–3 times per month	52 995/24 104	19.3/10.5	
	More than once per week	125 688/16 134	45.7/7.0	
Exercise	None	134 524/153 342	49.7/67.0	
	1–2 times per week	80 104/37 738	29.6/16.5	
	More than three times per week	55 916/37 669	20.7/16.5	

Table 2 Major variables in the National Health Insurance Service-National Health Screening Cohort database

Domain	Variables	Year												
		2002	2003	2004	2005	2006	2007	2008	2009	2010	2011	2012	2013	
Target health problems	Hypertension	✓	✓	✓	✓	✓	✓	✓	✓	✓	✓	✓	✓	✓
	Diastolic blood pressure	✓	✓	✓	✓	✓	✓	✓	✓	✓	✓	✓	✓	✓
	Fasting blood glucose	✓	✓	✓	✓	✓	✓	✓	✓	✓	✓	✓	✓	✓
	Total cholesterol	✓	✓	✓	✓	✓	✓	✓	✓	✓	✓	✓	✓	✓
Diabetes mellitus	Triglyceride													
	HDL (high density lipoprotein) cholesterol													
	LDL (low density lipoprotein) cholesterol													
	Haemoglobin	✓	✓	✓	✓	✓	✓	✓	✓	✓	✓	✓	✓	✓
Dyslipidaemia	Urine glucose	✓	✓	✓	✓	✓	✓	✓	✓	✓	✓	✓	✓	✓
	Kidney/urinary disease	✓	✓	✓	✓	✓	✓	✓	✓	✓	✓	✓	✓	✓
	Urine blood	✓	✓	✓	✓	✓	✓	✓	✓	✓	✓	✓	✓	✓
	Urine pH	✓	✓	✓	✓	✓	✓	✓	✓	✓	✓	✓	✓	✓
Anaemia	Urine protein	✓	✓	✓	✓	✓	✓	✓	✓	✓	✓	✓	✓	✓
	Chronic kidney disease	✓	✓	✓	✓	✓	✓	✓	✓	✓	✓	✓	✓	✓
	Liver disease	✓	✓	✓	✓	✓	✓	✓	✓	✓	✓	✓	✓	✓
	AST (aspartate transaminase)[SGOT (serum glutamic-oxaloacetic transaminase)]	✓	✓	✓	✓	✓	✓	✓	✓	✓	✓	✓	✓	✓
Liver disease	ALT (alanine transaminase)[SGPT (serum glutamic-pyruvic transaminase)]	✓	✓	✓	✓	✓	✓	✓	✓	✓	✓	✓	✓	✓
	r-GTP (gamma-glutamyl transpeptidase)	✓	✓	✓	✓	✓	✓	✓	✓	✓	✓	✓	✓	✓
	Neurological examination for lower leg for subjects at age 40 or 66	✓	✓	✓	✓	✓	✓	✓	✓	✓	✓	✓	✓	✓
	Bone density for subjects at age 40 or 66	✓	✓	✓	✓	✓	✓	✓	✓	✓	✓	✓	✓	✓
Frailty/lower leg weakness	Dental examination	✓	✓	✓	✓	✓	✓	✓	✓	✓	✓	✓	✓	✓
	Mental health screening	✓	✓	✓	✓	✓	✓	✓	✓	✓	✓	✓	✓	✓
Osteoporosis	Disease diagnosis per ICD-10 codes; Operation and procedure history, Medication history (generic name code, dose, duration of prescription, and material codes)	✓	✓	✓	✓	✓	✓	✓	✓	✓	✓	✓	✓	✓
	Vital statistics including dates and causes of deaths	✓	✓	✓	✓	✓	✓	✓	✓	✓	✓	✓	✓	✓
Periodontal diseases	All-cause and cause-specific deaths	✓	✓	✓	✓	✓	✓	✓	✓	✓	✓	✓	✓	✓
	Cognitive impairment, depression	✓	✓	✓	✓	✓	✓	✓	✓	✓	✓	✓	✓	✓
Common and uncommon diseases	Continued													

Continued

Table 2 Continued

Domain	Variables	Year												
		2002	2003	2004	2005	2006	2007	2008	2009	2010	2011	2012	2013	
Risk factors	Cigarette smoking	✓	✓	✓	✓	✓	✓	✓	✓	✓	✓	✓	✓	✓
	Cigarette smoking status	✓	✓	✓	✓	✓	✓	✓	✓	✓	✓	✓	✓	✓
	Daily smoking dose	✓	✓	✓	✓	✓	✓	✓	✓	✓	✓	✓	✓	✓
	Past daily smoking dose	✓	✓	✓	✓	✓	✓	✓	✓	✓	✓	✓	✓	✓
	Current daily smoking dose	✓	✓	✓	✓	✓	✓	✓	✓	✓	✓	✓	✓	✓
	Smoking duration	✓	✓	✓	✓	✓	✓	✓	✓	✓	✓	✓	✓	✓
	Smoking duration (ex-smoker)	✓	✓	✓	✓	✓	✓	✓	✓	✓	✓	✓	✓	✓
	Smoking duration (current smoker)	✓	✓	✓	✓	✓	✓	✓	✓	✓	✓	✓	✓	✓
	Drinking frequency	✓	✓	✓	✓	✓	✓	✓	✓	✓	✓	✓	✓	✓
	Days of drinking per week	✓	✓	✓	✓	✓	✓	✓	✓	✓	✓	✓	✓	✓
Alcohol	Amount of drinking per count	✓	✓	✓	✓	✓	✓	✓	✓	✓	✓	✓	✓	✓
	Amount of drinking per day	✓	✓	✓	✓	✓	✓	✓	✓	✓	✓	✓	✓	✓
	Body mass index	✓	✓	✓	✓	✓	✓	✓	✓	✓	✓	✓	✓	✓
Obesity	Waist circumference	✓	✓	✓	✓	✓	✓	✓	✓	✓	✓	✓	✓	✓
	Days of activity per week	✓	✓	✓	✓	✓	✓	✓	✓	✓	✓	✓	✓	✓
	Days of vigorous activity per week	✓	✓	✓	✓	✓	✓	✓	✓	✓	✓	✓	✓	✓
Physical activity	Days of moderate activity per week	✓	✓	✓	✓	✓	✓	✓	✓	✓	✓	✓	✓	✓
	Days of mild activity per week	✓	✓	✓	✓	✓	✓	✓	✓	✓	✓	✓	✓	✓
	Dental examination	✓	✓	✓	✓	✓	✓	✓	✓	✓	✓	✓	✓	✓
Dental caries, etc	Medical history	✓	✓	✓	✓	✓	✓	✓	✓	✓	✓	✓	✓	✓
	Family history	✓	✓	✓	✓	✓	✓	✓	✓	✓	✓	✓	✓	✓
Healthcare usage	Date of visit, types of medical institutions (clinics/hospitals/tertiary hospitals/public health centres), types of visit (inpatient/outpatient/emergency/intensive care), length of stay, medical cost (insurer/patient)	✓	✓	✓	✓	✓	✓	✓	✓	✓	✓	✓	✓	✓
	Location, type of hospitals, no of beds, medical equipment, human resources, specialties of physicians	✓	✓	✓	✓	✓	✓	✓	✓	✓	✓	✓	✓	✓
Socioeconomic and demographic factors	Hypertension, diabetes mellitus, stroke, ischaemic heart disease, etc	✓	✓	✓	✓	✓	✓	✓	✓	✓	✓	✓	✓	✓
	Hypertension, diabetes mellitus, stroke, ischaemic heart disease etc	✓	✓	✓	✓	✓	✓	✓	✓	✓	✓	✓	✓	✓
Healthcare provider	Age, sex, age, residential area, insurance type (the employee insured, the self-employed insured, dependents, medical aid), monthly insurance contributions (a proxy for income), types and grades of disabilities	✓	✓	✓	✓	✓	✓	✓	✓	✓	✓	✓	✓	✓
	Age, sex, age, residential area, insurance type (the employee insured, the self-employed insured, dependents, medical aid), monthly insurance contributions (a proxy for income), types and grades of disabilities	✓	✓	✓	✓	✓	✓	✓	✓	✓	✓	✓	✓	✓

Table 3 Crude and age-standardised (with the 2005 Korean census and world standard populations as references) prevalence rates (%) for specific health problems in the health screening database of the National Health Insurance Service-National Health Screening Cohort database at baseline, 2002–2003

	All						Men						Women					
	Cohort n	Crude rates		Age-standardised rates		WHO	Cohort n	Crude rates		Age-standardised rates		WHO	Cohort n	Crude rates		Age-standardised rates		WHO
Anaemia*	514256	9.2	9.8	9.8	9.8	278866	4.4	5.6	5.9	5.9	235390	15.6	15.9	15.6	15.9	15.5		
Diabetes mellitus	514190	7.9	8.2	8.4	8.4	278826	9.0	9.4	9.6	9.6	235364	6.2	6.4	6.2	6.4	6.6		
Prediabetest	514581	34.4	35.6	36.1	36.1	278989	38.0	39.1	39.4	39.4	235592	29.8	30.3	29.8	30.3	31.0		
Hypertension	514286	6.2	6.2	6.2	6.2	278866	5.7	5.3	5.1	5.1	235420	6.5	6.3	6.5	6.3	6.4		
Abnormal liver function test§	514350	2.9	2.7	2.7	2.7	278901	2.1	1.9	1.9	1.9	235449	3.7	3.6	3.7	3.6	3.6		
Obesity	513887	14.3	14.2	14.3	14.3	278681	13.0	12.5	12.4	12.4	235206	15.8	15.6	15.8	15.6	16.0		
Overweight¶	513046	5.9	6.0	6.1	6.1	278228	3.2	3.4	3.4	3.4	234818	9.3	9.3	9.3	9.3	9.4		
Hypercholesterolaemia**	513095	2.0	2.0	2.0	2.0	278252	1.9	2.0	2.0	2.0	234843	1.9	2.0	1.9	2.0	2.0		

*Hb <13 g/dL (men), <12 g/dL (women).

†Diabetes mellitus: fasting glucose of 126 mg/dL; prediabetes, 100–126 mg/dL.

‡Hypertension: systolic blood pressure of 140 mm Hg or diastolic blood pressure of 90 mm Hg; high-normal, systolic blood pressure of 130 mm Hg or diastolic blood pressure of 85 mm Hg.

§More than two times than upper limit of normal (ULN); ULN for alanine aminotransferase: men, 30 IU/L; women, 19 IU/L.

¶Obesity: body mass index ≥30 kg/m²; overweight: body mass index 25–29.9 kg/m².

**Total cholesterol ≥240 mg/dL (6.2 mmol/L).

††Urine dip-stick test for occult blood: +1, +2, +3, +4.

‡‡Urine dip-stick test for protein: +1, +2, +3, +4.

Table 4 Crude and age-standardised (with the 2005 Korean census and world standard populations as references) incidence density (per 100 person-years) for specific health problems in the health screening database of the National Health Insurance Service-National Health Screening Cohort database, 2005–2013

	All						Men			Women		
	Crude		Age-standardised rates		Cohort n	Crude rates	Age-standardised rates		Cohort n	Age-standardised rates		
	Cohort n rates	Census	WHO	Census			WHO	Census		WHO		
Incidence density (2005–2013)												
Anaemia*	450207	2.6	2.9	2.9	259787	1.9	2.3	2.4	190420	3.7	3.8	3.8
Diabetes mellitus†	461760	1.7	1.7	1.7	243937	2.1	2.1	2.1	217823	1.2	1.3	1.3
Hypertension‡	299857	4.1	4.6	4.7	146050	4.4	4.8	4.9	153807	3.8	4.4	4.5
Abnormal liver function test§	471917	1.4	1.4	1.3	255924	1.1	1.0	1.0	215993	1.8	1.8	1.8
Obesity¶	496720	0.3	0.3	0.3	270970	0.2	0.2	0.2	225750	0.3	0.3	0.3
Hypercholesterolaemia**	420838	2.7	2.6	2.6	230116	2.0	1.9	1.9	190722	3.4	3.4	3.4
Abnormal urine blood ††	471226	2.4	2.3	2.3	264380	1.4	1.4	1.4	206846	3.7	3.6	3.6
Abnormal urine protein†††	499428	0.7	0.7	0.8	269992	0.8	0.8	0.8	229436	0.7	0.7	0.7

Incident cases were defined as those cases newly diagnosed in 2005–2013 who did not meet the diagnostic criteria in 2002–2004.

*Hb <13 g/dL (men), <12 g/dL (women).

†Fasting glucose of 126 mg/dL.

‡Systolic blood pressure of 140 mm Hg or diastolic blood pressure 90 mm Hg.

§More than two times than upper limit of normal (ULN); ULN for alanine aminotransferase: men, 30 IU/L; women, 19 IU/L.

¶Body mass index ≥30 kg/m².

**Total cholesterol ≥240 mg/dL (6.2 mmol/L).

††Urine dip-stick test for occult blood: +1, +2, +3, +4.

†††Urine dip-stick test for protein: +1, +2, +3, +4.

Table 5 Number of all-cause deaths through 2012 (10 years after baseline) and crude and age-standardised (with the 2005 Korean census and world standard populations as references) mortality rates (per 100000 person-years) in the National Health Insurance Service-National Health Screening Cohort database

All-cause	All			Men			Women						
	No of cohort population* (2003–2012)†	No of deaths	Crude rate	Age-standardised mortality rates		No of deaths	Crude rate	Age-standardised mortality rates					
				Census	WHO			Census	WHO				
Mortality rates (2003–2012)†													
2 year (2004)	512 802	3705	360.2	442.0	463.6	2748	493.1	648.9	680.4	957	203.1	238.3	250.8
5 year (2007)	503 007	13 097	513.0	646.0	678.3	9 336	676.5	917.8	963.0	3761	320.6	383.9	404.8
10 year (2012)	483 421	33 058	657.9	865.9	910.2	22 684	839.0	1199.9	1260.5	10 374	447.0	556.2	586.4

*No of cohort population at the end of the year.

†Death cases were defined as those cases who died in 2003–2012.

designated according to the Framework Act on Health Examinations, and must meet the standards of manpower, facilities and equipment.

The NHIS established the National Health Information Database (NHID) in 2011, which incorporates all data from the NHIS and consists of five databases:⁵ an eligibility database, a national health screening database, a healthcare usage database, a long-term care insurance database and a healthcare provider database. The NHID covers the entire population of Korea (50 million) and thus has proven unwieldy for researchers. The NHIS constructed a representative 2% sample cohort database, the NHIS-National Sample Cohort (NHIS-NSC),⁶ but the NHIS-NSC did not meet the high demand for research requiring both health screening data and long-term health outcomes. The NHIS therefore constructed the NHIS-HEALS cohort database in 2015 to support a wide range of public research. The NHIS-HEALS has been made publicly available to facilitate wider use of the health screening database, and includes a larger sample of health screening participants than the NHIS-NSC.

COHORT DESCRIPTION

The participants of the cohort

The eligibility criteria for the general health screening programme provided by the NHIS varied according to the insurance type of beneficiaries. Employed individuals were eligible at all ages, while the self-employed were eligible if they were the head of household of a family. The dependents of the employed and family members of the self-employed heads of household were eligible only for those aged 40 years or older. Among the beneficiaries of the medical aid programme, which is a tax-based governmental programme for low-income families that covers approximately 3% of all Koreans, heads of household 19–64 years of age and family members 41–64 years of age were eligible for the general health screening programme. Medical aid beneficiaries have been included in the general health screening programme since 2012.

To construct the NHIS-HEALS database, a sample cohort was first selected from the 2002 and 2003 health screening participants, who were aged between 40 and 79 in 2002 and followed up through 2013. This cohort included 514 866 health screening participants who comprised a 10% simple random sample of all health screening participants in 2002 and 2003. Since only a small proportion of people aged less than 40 participated in the health screening programme, and the response rate was very low among people aged 80 years or older, the NHIS-HEALS was limited to adults aged 40 to 79 years. Gender-specific and age-specific distributions of the cohort population, the source population (all health screening participants) and the overall Korean population are presented in online supplementary table 1.⁷ Under the current National Health Insurance Act, the data can only be used for research purposes without patients' individual consent. Nevertheless, identification

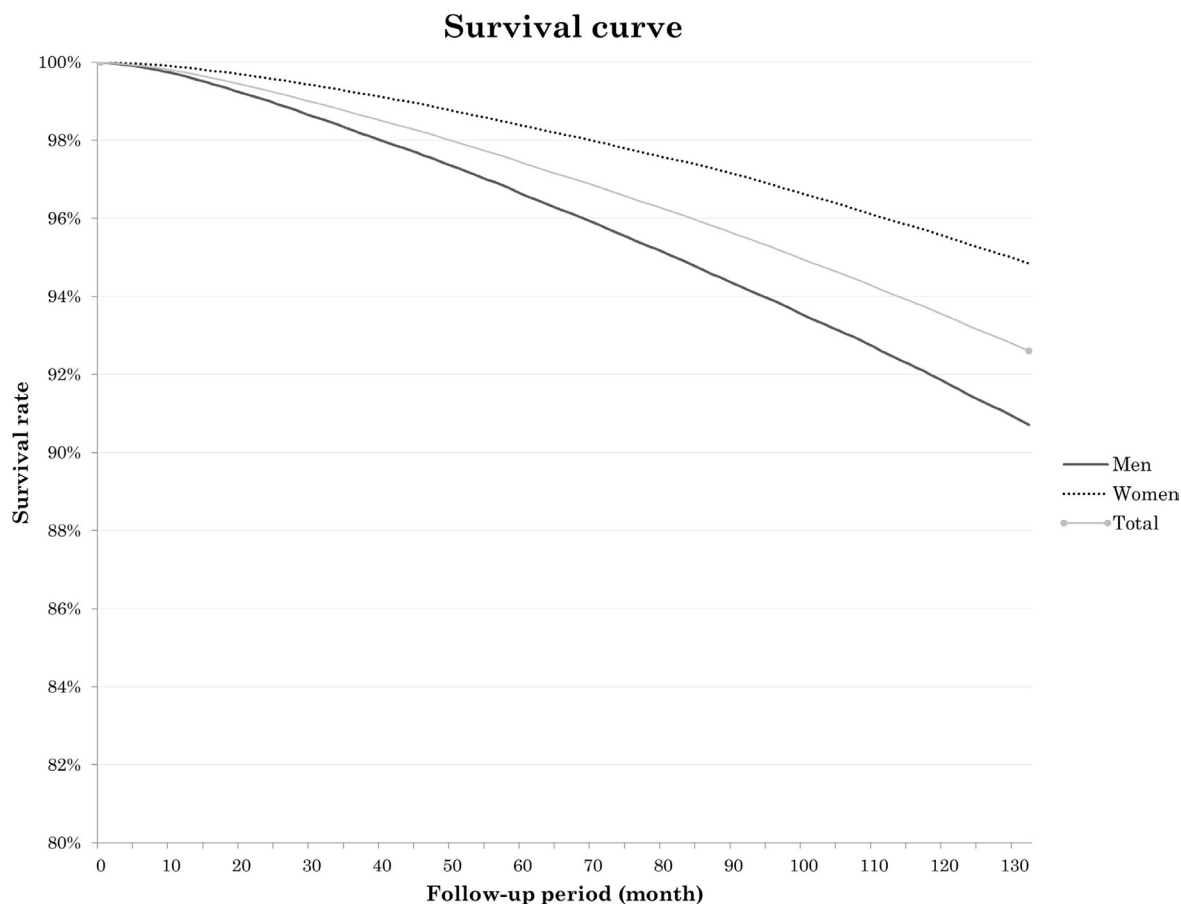


Figure 1 Survival curve of participants by sex in the National Health Insurance Service-National Health Screening Cohort database.

is difficult because the sample was drawn from the entire population and the data use deidentified individual keys that were created for the NHIS-HEALS.

The general characteristics of the cohort population at baseline are presented in [table 1](#). A total of 54.2% of the participants were men. The number of participants aged 40–44 years was highest among all age groups, accounting for a quarter of the sample (25.2%). A total of 55.3% of the participants lived in non-metropolitan areas, which covers some urban areas and all rural areas. The most common insurance type was health insurance for the employed. A total of 0.6% of the participants had any disabilities. The biennial screening participant rates ranged from 65.1% to 70.9% during the 2004–2013 period. Of the sample population, 31.6% participated six times in the health screening programmes during the follow-up period. A total of 42.3% of the men and 96.2% of the women were non-smokers. Nearly half of the men (45.7%) drank alcohol more than once per week, while most of the women (82.5%) rarely drank. Of the men, 49.7% never engaged in exercise at least once per week, compared with 67.0% of the women.

Follow-up interval

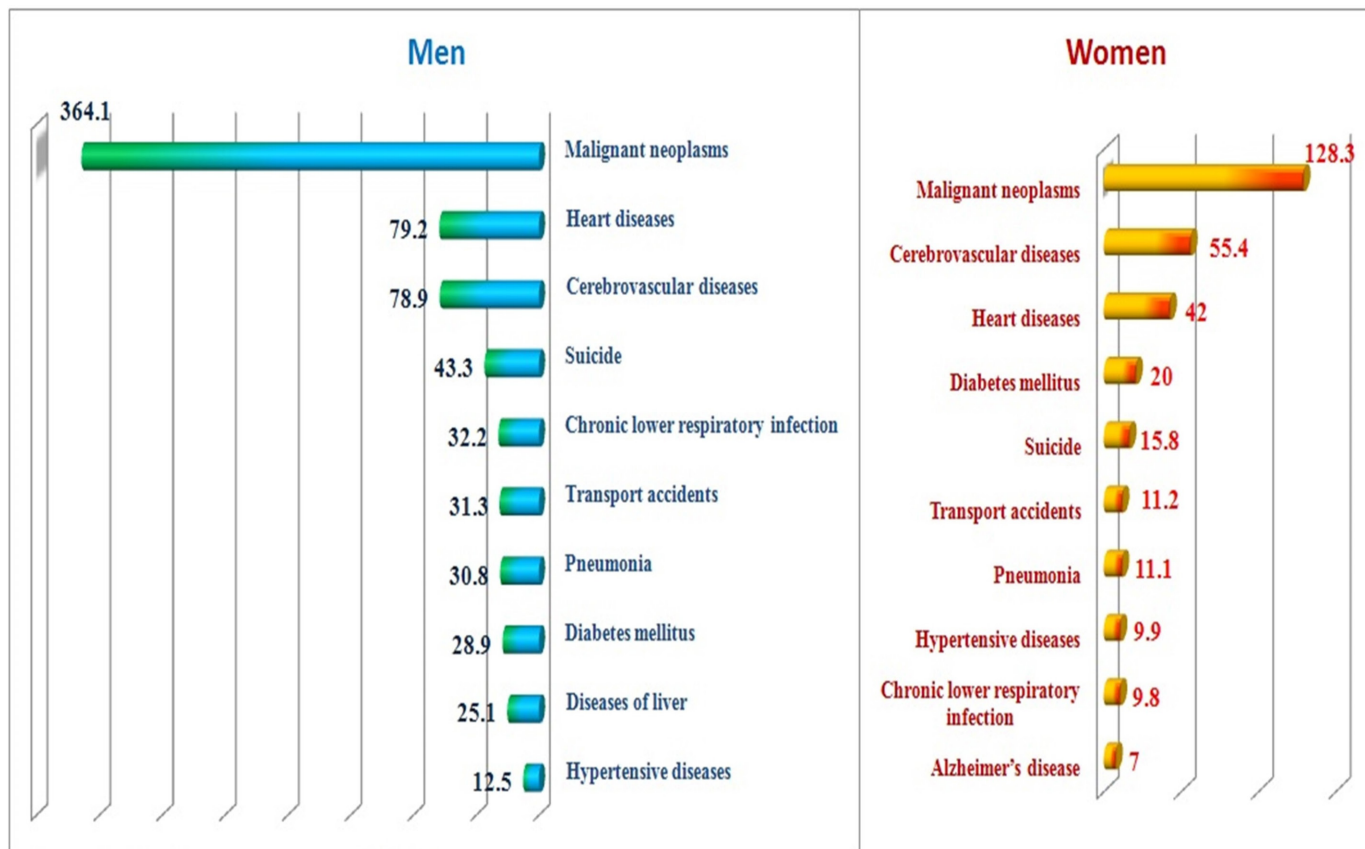
The cohort was followed up through 2013 annually for the eligibility information including death information and healthcare usage (all participants), and not

annually for the health screening information (only those who meet the eligibility criteria, biennially, for the screening programme and those who participated in the screening programme). Information on death (date and cause of death) from Statistics Korea was individually linked using unique personal identification numbers. By law, all deaths must be reported to Statistics Korea. Personal information regarding insurance contribution (a proxy for income), residential area and disability status was tracked every year from the eligibility database. The eligibility information was collected from the Public Information Sharing System, National Tax Service and Ministry of Health and Welfare of Korea, and managed by the NHIS, which has 178 regional branches and approximately 13 000 employees across Korea. As the NHIS covers the entire population of Korea, the healthcare usage information included all visits (inpatient, outpatient and pharmacy visits) to healthcare facilities that occurred in Korea. Information about the healthcare facilities was also monitored annually. Regarding the health screening follow-ups, 31.6% of the participants were monitored biennially until 2013, and 93.6% of the participants were examined at least once after a baseline screening. The cohort will be maintained and continuously updated by the NHIS.

Table 6 Cause-specific death rates for leading causes of death (2003–2013) and age-standardised (with the 2005 Korean census and world standard populations as references) mortality rates (per 100 000 person-years) in the National Health Insurance Service-National Health Screening Cohort database

Rank	Cause of death	Men						Women						
		Age-standardised rates			Age-standardised rates			Age-standardised rates			Age-standardised rates			
		Crude rates	Census	WHO	Crude rates	Census	WHO	Crude rates	Census	WHO	Crude rates	Census	WHO	
1	Malignant neoplasms	269.5	239.5	264.4	365.8	364.1	406.6	157.6	128.3	140.5	Malignant neoplasms	157.6	128.3	140.5
2	Cerebrovascular diseases	68.8	66.9	76.5	71.7	79.2	91.0	63.5	55.4	64.5	Cerebrovascular diseases	63.5	55.4	64.5
3	Heart diseases	59.7	60.8	70.8	73.3	78.9	89.0	45.7	42.0	50.8	Heart diseases	45.7	42.0	50.8
4	Suicide	32.1	30.0	31.6	44.3	43.3	45.6	22.8	20.0	23.5	Diabetes mellitus	22.8	20.0	23.5
5	Diabetes mellitus	25.6	24.5	28.1	26.8	32.2	38.1	18.0	15.8	16.9	Suicide	18.0	15.8	16.9
6	Transport accidents	23.8	21.6	22.6	33.2	31.3	32.6	12.8	11.2	12.0	Transport accidents	12.8	11.2	12.0
7	Chronic lower respiratory infections	19.0	19.8	23.7	19.7	30.8	39.7	9.8	11.1	14.5	Pneumonia	9.8	11.1	14.5
8	Pneumonia	15.1	19.5	25.1	28.1	28.9	32.3	11.2	9.9	11.8	Hypertensive diseases	11.2	9.9	11.8
9	Diseases of liver	18.0	15.6	16.3	28.2	25.1	26.0	10.0	9.8	12.3	Chronic lower respiratory infections	10.0	9.8	12.3
10	Hypertensive diseases	10.0	11.0	13.5	8.9	12.5	15.8	4.6	7.0	9.9	Alzheimer's disease	4.6	7.0	9.9

The cause of death was classified using the selection list of 56 causes of death provided by Statistics Korea, which originated from the list of 80 causes of death for the tabulation of mortality statistics recommended by WHO.



Age standardized mortality rates (per 100,000 person-years)

Figure 2 The major 10 causes of death by sex in the cohort sample of the National Health Insurance Service–National Health Screening Cohort database.

The key variables

The key variables of the NHIS-HEALS, which were mainly constructed from the variables of the NHID, are presented in table 2 and online supplementary table 2. The eligibility database included information about income-based insurance contributions (a proxy for income), demographic variables, and date and cause of death. Variables for specific health problems and risk factors from questionnaires (cigarette smoking status/dose/duration, frequency per week and amount per day of alcohol drinking—regardless of the type of alcohol, type and days per week of physical activity, medical history and family history) and bioclinical laboratory results (blood pressure, fasting glucose, lipid profile, haemoglobin, urine stick test, creatinine, liver enzyme, body mass index and waist circumference) were included in the health screening database. Some variables changed during the follow-up period. The healthcare usage database was based on data collected during the process of claiming healthcare services and included information on records of inpatient and outpatient usage (diagnosis, length of stay, treatment costs and services received) and prescription records (drug code, days prescribed and daily dosage). The healthcare provider database included information on types of healthcare institutions, healthcare human resources and equipment.

FINDINGS TO DATE

As the NHIS-HEALS was launched in December 2015, no noteworthy studies have yet been published. However, several studies using the health screening and health-care usage database of the NHID have been published. Studies have examined the associations of body mass index with cancer risk⁸ and mortality,⁹ glucose levels with cancer risk¹⁰ and hospitalisation,¹¹ smoking with cancer^{12–13} and diabetes mellitus,¹⁴ physical activities with body mass index¹⁵ and cholesterol levels with cancer risk.¹⁶ These research results have had positive impacts on health promotion by raising awareness of various public health issues, with an example being the lawsuit against the tobacco industry by the NHIS.¹⁷ The NHIS-HEALS will provide additional strong evidence regarding the issues that were assessed in previous studies using the NHID by including the cause of death, unlike the NHID.

We herein present the basic statistics of NHIS-HEALS for future data users. We calculated the prevalence rates of various conditions, the incidence density of those conditions, healthcare usage rates and mortality. The rates were age-standardised using the census population of Statistics Korea in 2005 and the world standard population.¹⁸ The rates that were standardised using the world standard are presented below.

Prevalence rates for specific health problems identified from the health screening database at baseline (2002–2003) are presented in [table 3](#). The age-standardised prevalence of anaemia in the NHIS-HEALS was 9.8%, with a higher rate in women (15.5%) than men (5.9%) ($p<0.001$). The age-standardised prevalence of diabetes mellitus was 8.4%, while the age-standardised prevalence of hypertension in the NHIS-HEALS was 36.1%. The prevalence of diabetes and hypertension was higher in men than women ($p<0.001$). The age-standardised prevalence of obesity (body mass index of 30 kg/m² or greater) in NHIS-HEALS was 2.7%, while the prevalence of overweight (body mass index of 25 kg/m² or greater, but less than 30 kg/m²) was 31.0%. The age-standardised prevalence of hypercholesterolaemia in the NHIS-HEALS was 14.3%; the rate was higher in women (16.0%) than men (12.4%) ($p<0.001$). The age-standardised prevalence of abnormal urine protein tests was 2.0%, and the rate was the same (2.0%) in both sexes. When we compared these results with those of the Korean National Health and Nutrition Examination Survey for participants aged 40 or over,¹⁹ generally similar levels of prevalence of anaemia, diabetes, hypertension, obesity and hypercholesterolaemia were found.

The incidence density for specific health problems based on information from the health screening database in 2005–2013 is presented in [table 4](#). To identify incident cases, we excluded patients who were previously diagnosed in the first 3 years (2002–2004) of the study period, because the data did not include the baseline information (participants' screening and healthcare usage records before 2002). With reference to previous studies,^{20–22} the exclusion period was set as the first 2 years, starting in 2002 (2002–2003) or 2003 (2003–2004). The incidence density was highest for hypertension (4.7%), followed by anaemia (2.9%), hypercholesterolaemia (2.6%), abnormal urine blood (2.3%) and diabetes mellitus (1.7%).

The healthcare usage rates of 10 major diseases at baseline based on the healthcare usage database are presented in online supplementary table 3. The rates were highest for acute upper respiratory infections and influenza (46.5%), followed by dyspepsia and other diseases of the stomach and duodenum (29.7%) and other diseases of the eye and adnexa (22.3%).

The mortality rates of the cohort population are presented in [table 5](#), and survival curve of participants is presented in [figure 1](#). We calculated mortality rates using the entire sample data of NHIS-HEALS from 2003 to 2013. The age-standardised (defined with reference to the Korean census population) mortality rate for the first 2 years (through 2004) was 463.6 per 100 000 person-years, while the rate for 5 years (through 2007) was 678.3 per 100 000 person-years and the rate for 10 years (through 2012) was 910.2 per 100 000 person-years. In men, the mortality rate was higher than in women (2-year mortality rates of 680.4 per 100 000 person-years for men and 250.8 per 100 000 person-years for women) ($p<0.001$).

The major causes of death by sex during the follow-up period (2003–2013) are presented in [table 6](#) and [figure 2](#). Causes of death were classified using the list of 56 causes of death of Statistics Korea, which was derived from the list of 80 causes of death for the tabulation of mortality statistics recommended by WHO. The most common cause of death was malignant neoplasm in both sexes (406.6 per 100 000 person-years for men, 140.5 per 100 000 person-years for women). Heart disease was the second most common cause in men (91.0 per 100 000 person-years) and the third most common cause in women (50.8 per 100 000 person-years). Cerebrovascular diseases were the third most common cause in men (89.0 per 100 000 person-years) and the second most common cause in women (64.5 per 100 000 person-years). Suicide was the fourth most common cause overall (31.6 per 100 000 person-years), the fourth most common cause in men (45.6 per 100 000 person-years) and the fifth most common cause in women (16.9 per 100 000 person-years).

STRENGTHS AND LIMITATIONS

The NHIS-HEALS has several strengths. First, it is a cohort with a large sample size ($n=514866$), with a relatively low rate of attrition over more than 10 years of follow-up due to the nature of the national administration data. Second, a questionnaire survey, physical examination, dental health screening and clinical laboratory tests were performed for all cohort members. This database can be used to study the risk factors of non-communicable diseases and dental health problems, which are an important health issue that has not yet been fully investigated. Third, the NHIS-HEALS contains the date and cause of death, which were determined using the national database for cause of death produced by Statistics Korea, which allows investigations such as burden-of-disease studies. Statistics Korea annually reports cause of death statistics, and a previous study reported the accuracy of the cause of death to be 92%.²³ Fourth, the NHIS-HEALS contains extensive information on healthcare usage regarding inpatient and outpatient visits to healthcare institutions and medication histories.

The NHIS-HEALS also has weaknesses. The study subjects are slightly younger than the general population of Korea. Variables on health behaviours are limited since those data were obtained from self-reporting in nationwide health screenings. In addition, the disease diagnosis variables in the healthcare claim data might not accurately reflect patients' medical conditions, but only healthcare usage sensitive to the Korean fee-for-service payment and reimbursement system.

Author affiliations

¹National Health Insurance Service, Wonju, Korea

²Big Data Steering Department, National Health Insurance Service, Wonju, Korea

³Department of Preventive Medicine, Seoul National University College of Medicine, Seoul, Korea

⁴Department of Biomedical Science, Seoul National University College of Medicine, Seoul, Korea

⁵Cancer Research Institute, Seoul National University College of Medicine, Seoul, Korea

⁶Department of Health Policy and Management, Seoul National University College of Medicine, Seoul, Korea

⁷Institute of Health Policy and Management, Seoul National University Medical Research Center, Seoul, Korea

⁸Department of Preventive Medicine, Yonsei University College of Medicine, Seoul, Korea

⁹Gwanak Branch, National Health Insurance Service, Seoul, Korea

Contributors SCS, SKP, YHK, HCK, SAS, S-LJ contributed to the conception of this article. YYK, JHP, C-HD, J-SS were involved in manuscript writing and revision. Y-YK, JHP, H-JK, E-JL, SH were involved in data analysis and interpretation. All authors read and approved the final manuscript.

Funding This work was supported by National Health Insurance Service (NHIS) in Korea.

Competing interests None declared.

Provenance and peer review Not commissioned; externally peer reviewed.

Data sharing statement The data can be accessed on the National Health Insurance Data Sharing Service homepage of the NHIS (<http://nhiss.nhis.or.kr>). Applications to use the NHIS-HEALS data will be reviewed by the inquiry committee of research support and, once approved, raw data will be provided to the applicant with a fee. Although, the data are coded in English and numbers, not in Korean (Hangul), use of individual data is allowed only for Korean researchers at the moment, but it would be possible for researchers outside the country to gain access to the data by conducting a joint study with Korean researchers.

Open Access This is an Open Access article distributed in accordance with the Creative Commons Attribution Non Commercial (CC BY-NC 4.0) license, which permits others to distribute, remix, adapt, build upon this work non-commercially, and license their derivative works on different terms, provided the original work is properly cited and the use is non-commercial. See: <http://creativecommons.org/licenses/by-nc/4.0/>

© Article author(s) (or their employer(s) unless otherwise stated in the text of the article) 2017. All rights reserved. No commercial use is permitted unless otherwise expressly granted.

REFERENCES

- National Health Insurance Service (NHIS), Korea. National Health Insurance System of Korea, 2015. <http://www.nhis.or.kr/static/html/wbd/g/a/wbdga0704.html> (accessed date 13 July 2016).
- Cho B, Lee CM. Current situation of national health screening systems in Korea. *J Korean Med Assoc* 2010;53:363–70.
- Kim HS, Shin DW, Lee WC, *et al*. National screening program for transitional ages in Korea: a new screening for strengthening primary prevention and follow-up care. *J Korean Med Sci* 2012;27:S70–5.
- National Health Insurance Service (NHIS). *National Health Screening Statistical Yearbook*. Seoul: National Health Insurance Service.
- Cheol Seong S, Kim YY, Khang YH, *et al*. Data Resource Profile: The National Health Information Database of the National Health Insurance Service in South Korea. *Int J Epidemiol* 2016. dyw253.
- Lee J, Lee JS, Park SH, *et al*. Cohort Profile: The National Health Insurance Service-National Sample Cohort (NHIS-NSC), South Korea. *Int J Epidemiol* 2017;46:dyv319.
- Statistics Korea. http://kosis.kr/eng/statisticsList/statisticsList_01List.jsp?vwcd=MT_ETITLE&parentId=B#SubCont (accessed date 24 July 2016).
- Jee SH, Yun JE, Park EJ, *et al*. Body mass index and cancer risk in Korean men and women. *Int J Cancer* 2008;123:1892–6.
- Kim NH, Lee J, Kim TJ, *et al*. Body mass index and mortality in the general population and in subjects with chronic disease in Korea: A nationwide cohort study (2002–2010). *PLoS One* 2015;10:e0139924.
- Jee SH, Ohrr H, Sull JW, *et al*. Fasting serum glucose level and cancer risk in Korean men and women. *JAMA* 2005;293:194–202.
- Ki M, Baek S, Yun YD, *et al*. Age-related differences in diabetes care outcomes in Korea: a retrospective cohort study. *BMC Geriatr* 2014;14:111.
- Yun YD, Back JH, Ghang H, *et al*. Hazard ratio of smoking on lung cancer in Korea according to histological type and gender. *Lung* 2016;194:281–9.
- Jee SH, Samet JM, Ohrr H, *et al*. Smoking and cancer risk in Korean men and women. *Cancer Causes Control* 2004;15:341–8.
- Hur NW, Kim HC, Nam CM, *et al*. Smoking cessation and risk of type 2 diabetes mellitus: Korea Medical Insurance Corporation Study. *Eur J Cardiovasc Prev Rehabil* 2007;14:244–9.
- Lee DC, Park I, Jun TW, *et al*. Physical activity and body mass index and their associations with the development of type 2 diabetes in Korean men. *Am J Epidemiol* 2012;176:43–51.
- Kitahara CM, Berrington de González A, Freedman ND, *et al*. Total cholesterol and cancer risk in a large prospective study in Korea. *J Clin Oncol* 2011;29:1592–8.
- Nam HW. Health insurer to sue tobacco firms. *The Korea Times*. [newspaper on the internet] 2014. http://www.koreatimes.co.kr/www/news/nation/2016/05/116_150460.html (accessed date 24 July 2016).
- Ahmad OB, Boschi-Pinto C, Lopez AD, *et al*; *Age standardization of rates: a new WHO standard*. vol. 9. Geneva: World Health Organization, 2001.
- Ministry of Health and Welfare of Korea, Korea Institute for Health and Social Affairs (KIHASA). *2001 National Health and Nutrition Survey - Health Examination*. Seoul: Ministry of Health and Welfare of Korea, 2002.
- Porepa L, Ray JG, Sanchez-Romeu P, *et al*. Newly diagnosed diabetes mellitus as a risk factor for serious liver disease. *CMAJ* 2010;182:E526–E531.
- Mazzaglia G, Ambrosioni E, Alacqua M, *et al*. Adherence to antihypertensive medications and cardiovascular morbidity among newly diagnosed hypertensive patients. *Circulation* 2009;120:1598–605.
- Vamos EP, Harris M, Millett C, *et al*. Association of systolic and diastolic blood pressure and all cause mortality in people with newly diagnosed type 2 diabetes: retrospective cohort study. *BMJ* 2012;345:e5567.
- Won TY, Kang BS, Th I, *et al*. The study of accuracy of death statistics. *J Korean Soc Emerg Med* 2007;18:256–62.