

# BMJ Open Tablet computers versus optical aids to support education and learning in children and young people with low vision: protocol for a pilot randomised controlled trial, CREATE (Children Reading with Electronic Assistance To Educate)

Michael D Crossland,<sup>1</sup> Rachel Thomas,<sup>2</sup> Hilary Unwin,<sup>3</sup> Seelam Bharani,<sup>4</sup> Vijaya K Gothwal,<sup>4</sup> Ana Quartilho,<sup>5</sup> Catey Bunce,<sup>6</sup> Annegret Dahlmann-Noor<sup>5</sup>

**To cite:** Crossland MD, Thomas R, Unwin H, *et al*. Tablet computers versus optical aids to support education and learning in children and young people with low vision: protocol for a pilot randomised controlled trial, CREATE (Children Reading with Electronic Assistance To Educate). *BMJ Open* 2017;7:e015939. doi:10.1136/bmjopen-2017-015939

► Prepublication history and additional material are available. To view these files please visit the journal online (<http://dx.doi.org/10.1136/bmjopen-2017-015939>).

Received 11 January 2017  
Revised 21 March 2017  
Accepted 12 April 2017



CrossMark

For numbered affiliations see end of article.

## Correspondence to

Dr Annegret Dahlmann-Noor; [annegret.dahlmann-noor@moorfields.nhs.uk](mailto:annegret.dahlmann-noor@moorfields.nhs.uk)

## ABSTRACT

**Introduction** Low vision and blindness adversely affect education and independence of children and young people. New 'assistive' technologies such as tablet computers can display text in enlarged font, read text out to the user, allow speech input and conversion into typed text, offer document and spreadsheet processing and give access to wide sources of information such as the internet. Research on these devices in low vision has been limited to case series.

**Methods and analysis** We will carry out a pilot randomised controlled trial (RCT) to assess the feasibility of a full RCT of assistive technologies for children/young people with low vision. We will recruit 40 students age 10–18 years in India and the UK, whom we will randomise 1:1 into two parallel groups. The active intervention will be Apple iPads; the control arm will be the local standard low-vision aid care. Primary outcomes will be acceptance/usage, accessibility of the device and trial feasibility measures (time to recruit children, lost to follow-up). Exploratory outcomes will be validated measures of vision-related quality of life for children/young people as well as validated measures of reading and educational outcomes. In addition, we will carry out semistructured interviews with the participants and their teachers.

**Ethics and dissemination** NRES reference 15/NS/0068; dissemination is planned via healthcare and education sector conferences and publications, as well as via patient support organisations.

**Trial registration number** NCT02798848; IRAS ID 179658, UCL reference 15/0570.

## INTRODUCTION

People are considered to have 'low vision' when their corrected visual acuity (VA) is poorer than 6/18 in their better eye, or their visual field is less than 10° from the point of fixation, but they use, or are potentially able

## Strengths and limitations of this study

- Enrolment in different settings, pragmatically exploring feasibility.
- Low selection, performance and detection bias.
- Small sample size.
- Performance and social desirability bias (masking of participants not possible).
- Possible differential bias between study arms (attractiveness of active intervention).

to use, vision for the planning and/or execution of a task.<sup>1</sup> There is an overlap with the definitions of visual impairment (VI) and severe VI/blindness. Low vision affects almost 3 million children worldwide.<sup>2–3</sup> It adversely affects educational and employment opportunities, causing economic hardship in adult life.<sup>4–5</sup> Early assessment, provision of low-vision aids (LVAs) and training in their use are essential to improve functional vision (FV) and to allow children to fully participate in education and improve their quality of life (QoL).

In recent years, LVAs have been complemented by 'assistive technologies' (AT). These include electronic vision enhancement devices such as closed-circuit television (CCTV), computer screen reading software, digital audio books, periodicals and text which can be accessed via computers, mobile phones and tablet computers. AT may enhance reading and writing skills, as well as communication with the world on an equal basis, thereby improving the QoL

of people with low vision and facilitating the learning process.<sup>6</sup>

Teachers, parents and young people with low-vision report limited use of prescribed LVAs and other AT devices usually for fear of ‘standing out’. Electronic devices can have other limitations including a lack of portability, poor integration with school information technology networks and limitations of either input or output functions.

Tablet computers may help overcome many of these problems as they are portable and capable of running a wide range of software and of accessing wireless networks. More importantly, acceptability by young people may be high. Numerous applications are available, such as screen magnifiers, optical character recognition and text-to-speech conversion. All manufacturers provide ‘accessibility features’. The Apple iPad, recommended by low-vision support charities such as the Royal National Institute for Blind People and the Royal London Society for the Blind, increases reading speed in adults with low vision<sup>7</sup> and is used by many people with low vision.<sup>8</sup>

Tablet computers are of considerably lower cost (around £400–1600 per student) than current standard classroom technology, such as CCTV (which can cost up to £6400 with distance and near camera, per student). Tablet computers offer the additional advantages of direct access to school intranets, social acceptability and word document and spreadsheet processing. Additionally, the price of tablet computers is likely to fall, whereas the price of CCTVs has remained high.

In the UK, support funding for children and young people with VI in local authority-maintained settings has traditionally been administered by their local authority. There is increasingly a shift of funding streams, for example, children with VI may attend educational settings which are not funded or maintained by the local authority, or individual funding may be agreed with the family (self-directed support). Robust information about the performance of different devices is vitally important for educational settings and families and carers.

We have carried out two systematic Cochrane reviews of the paediatric low-vision literature and have found that to date, no clinical trials of AT for young people with low vision have been conducted.<sup>9 10</sup> Instead, the literature is limited to small non-randomised case series and cohort studies, mostly of optical devices. Informal discussions with young people with VI, their families and teachers indicate that those who have access to tablet computers such as Apple iPads find their accessibility features very useful, and would support research comparing this AT with conventional LVAs.

## METHODS AND ANALYSIS

Our hypothesis is that tablet computer-based AT may have high acceptability and usage by children and young people with low vision, and may improve their FV, vision-related QoL (VRQoL) and access to education. As no preliminary data on trial feasibility are available, we

will carry out a pilot study to assess whether or not a definitive trial exploring this issue is feasible.

### Primary objective

The principal research question is: ‘Is it feasible to recruit young people with low vision into a randomised controlled trial testing the effect of electronic assistive technologies on reading, educational and quality of life outcome measures?’

### Secondary research questions

1. Is the active intervention (tablet computer) acceptable to young people, their families/carers and their teachers?
2. Is the active intervention accessible, and do participants use it?
3. Estimate VRQoL measures, FV measures and reading and educational outcome measures by intervention group at 6 months
4. Have there been any adverse events (loss of motivation, negative peer comments) about using the AT?
5. What are the costs associated with the active intervention?

### Trial design

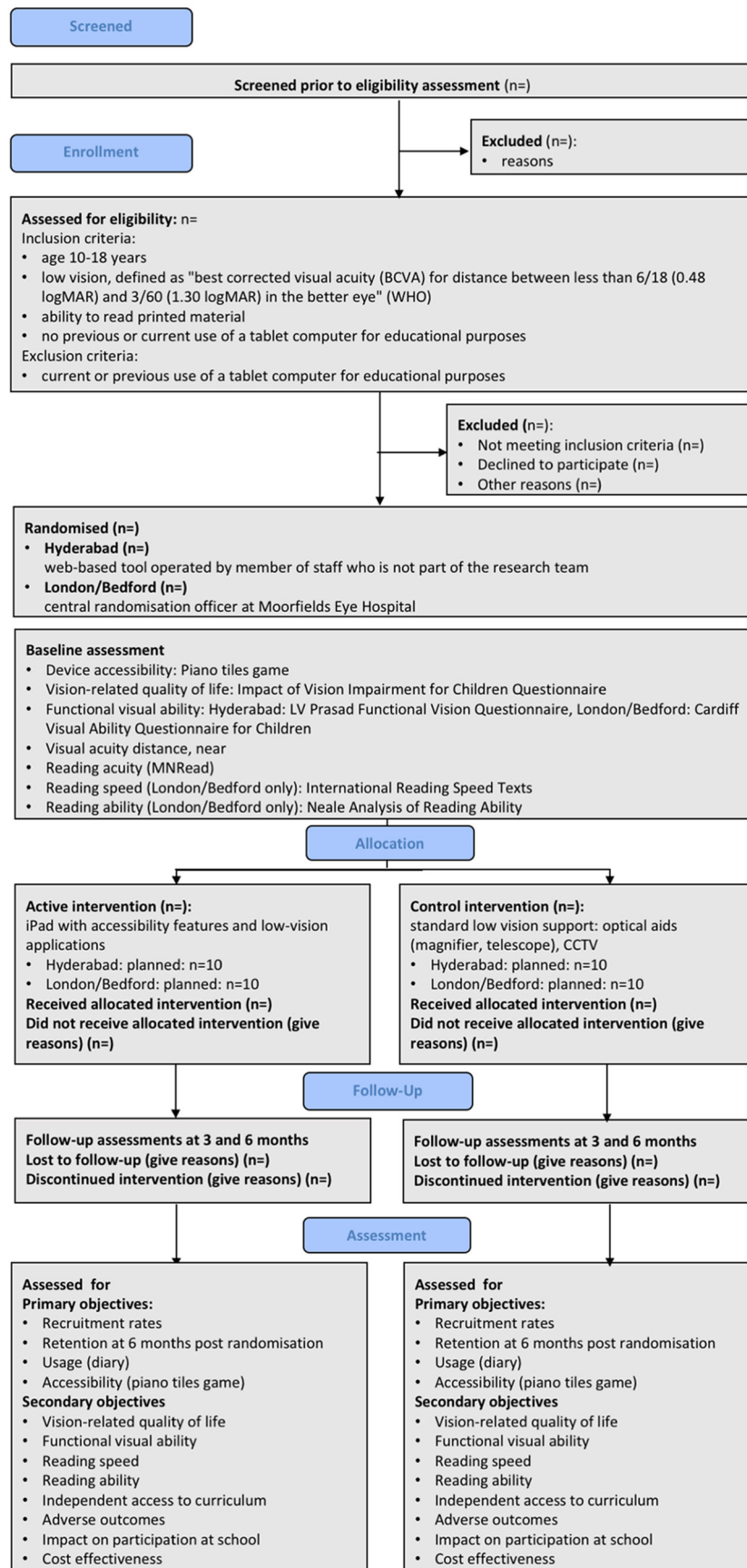
This is a parallel 1:1 two-arm pilot randomised controlled trial (RCT); the experimental intervention will be an Apple iPad tablet computer with low-vision applications, and the control intervention will consist of the conventional low-vision support as per standard clinical care, which includes optical LVA and/or CCTV.

### Study setting

There will be three recruitment sites, one in India (L V Prasad Eye Institute (LVPEI), Hyderabad, Telangana; Meera and L B Deshpande Centre for Sight Enhancement, a tertiary eye care hospital) and two in the UK—The Child Development Centre in Bedford (a multidisciplinary community health, education and social care facility for children with developmental needs and disabilities) and the low-vision clinic for children and young people at Moorfields Eye Hospital (a tertiary eye care facility in London). The decision to have two very different settings reflects the study funders’ aim to provide people in low-income countries with equal access to innovation, and to shorten the timescale of implementation of novel approaches in low-income settings.

### Inclusion criteria

We will include young people aged 10–18 years with low vision, defined as ‘best corrected visual acuity (BCVA) for distance between less than 6/18 (0.48 logMAR) and 3/60 (1.30 logMAR) in the better eye’ (WHO), who are able to read printed material and who are not currently using, and have not previously used, tablet computer for educational purposes (figure 1). We will include students who have access to a tablet computer already but do not use it for educational purposes. We will include students



**Figure 1** Flowchart showing planned participant flow (after Consort extension for pilot and feasibility studies<sup>19</sup>). CCTV, closed-circuit television.

who use a laptop. We will also include students who use or have previously used optical LVAs such as magnifiers, telescopes and CCTV systems.

### Exclusion criteria

Young people who are currently using or are prior users of a tablet computer for educational purposes (at school or frequently for homework) will be excluded. We accept that many videos and games children watch on tablet computers can be seen as educational, and that many children will use a tablet computer occasionally for research for homework. We will include young people using a tablet computer in this way.

Should participants in the control group receive a tablet computer from their local VI team or from their educational setting or if they start taking their own tablet computer to school, they will be removed from the trial and no further data collection will take place.

Near VA equivalent to 6/18 (0.48 logMAR) or better will not be an exclusion criterion, as even though students may perform well on a near acuity test, their reading acuity may be less than the near acuity measured in a clinical setting. Furthermore, as functional reading acuity can gradually reduce over the course of the day, there may be an increase in the need for optical magnification towards the end of the day, and when completing homework. [Figure 1](#) summarises the design of the trial; each of the trial aspects is described in detail below.

### Interventions

All participants recruited in the India and London site will receive a comprehensive low-vision assessment with an optometrist, including the prescription and supply of optimal refractive correction, tints and optical devices (magnifiers, telescopes), discussion and demonstration of electronic magnifiers, signposting to appropriate services and liaison with teachers for VI and class teachers.

The *active intervention* will be the use of a tablet computer (Apple iPad) for educational purposes at school and at home. The device will run word processing, spreadsheet and slide presentation files (Microsoft Office for iPad). These will allow students to import documents from the school's learning environment onto their device, work on them and export them back to the teacher. Users will be given information and instruction on voice-over (text-to-speech), magnification and contrast settings in the iOS software. In addition, we will install the video magnifier, colour identifying and image recognition application 'ViaOpta Daily'. The UK devices will have WiFi enabled to access school wireless networks. Additionally, those in India will have wireless data (3G) connectivity.

None of these applications is a medical device; they therefore do not require CE marking (confirmed by Medicines and Healthcare Products Regulatory Agency (MHRA)). We will activate the device accessibility features and install the applications before participants receive the devices. In London and India, study optometrists will train participants in the use of devices, features and applications. In

Bedford, the team for visually impaired pupils will support this training. We envisage an initial training session of 2 hours in the first week, followed by telephone support or follow-up visits to the setting if required. For participants recruited in London, each participant's teacher for the vision impaired will be informed of their inclusion in this study. Letters will be sent to the class teacher, teacher for the vision impaired and school special education needs coordinator requesting that the young people be allowed to use their device in the classroom.

In India, participants were provided with training in the use of the devices and iPad at the low-vision rehabilitation centre. Additional support was provided over the phone to children who faced some difficulty with using the iPad initially.

The *control intervention* will consist of the comprehensive low-vision assessment only. Due to differences in the recruitment route at Bedford, participants in the control group at Bedford will not be reassessed but will continue with their current spectacles and low-vision devices and will continue to be monitored by the VI team.

### Outcomes

#### Primary outcomes

The primary outcomes of this trial relate to feasibility of a full trial. There will be four primary outcomes: (1) recruitment rate over 6 months, (2) retention of participants until 3 months after randomisation, (3) acceptance/usage of the allocated device and (4) accessibility of the active intervention device.

Our recruitment target at both the site in India and the UK sites is 20 participants each over 6 months. We will consider that a definitive trial is feasible if we enrol 90% of this figure (n=18) during this period and/or if 100% are enrolled over 7 months. We will record the number of eligible young people declining to participate and their reasons for not wishing to take part. We will also capture whether any children dropped out of the study and why.

We will measure acceptance/usage of the allocated device using a participant diary; we will summarise usage for the electronic database as ordinal variable: 0=no acceptance, 1=used sometimes, 2=used frequently. We will define success as 80% of participants in the active intervention group using the device 'frequently'.

Accessibility of the active intervention device will be determined by asking participants to play a touch-based game, 'Piano Tiles'. In this game, the player has to touch moving black tiles that move down the screen. Following an introduction to the game using the 'classic' version, we will assess the young person's score in the 'zen' version over 15s and record the best score of three attempts. We will convert the game score to an ordinal variable for capture within the pilot database as follows: score 0–15: ordinal variable 0=low accessibility, 16–35: 1=medium accessibility, greater than 35: 2=high accessibility. The protocol authors agreed on using this scoring system based on five children with good and with low vision playing this game; this system is at present not validated, and this pilot trial will allow us to collect data

about the range of scores achieved by the population of interest.

### Exploratory/secondary outcomes

In addition to the primary outcomes, which will inform a future full RCT, we will collect data on a range of measures of visual function used in healthcare settings. Specifically, we will record functional visual ability, as measured by Cardiff Visual Ability Questionnaire for Children (CVAQC)<sup>11</sup> for UK participants, and the L V Prasad Functional Vision Questionnaire (LVP-FVQII) for participants in India.<sup>12</sup> While it would be desirable to use the same instrument in both settings, differences in language and activities of daily living mean that there is no validated, universal tool that could be used both in India and in the UK.

Across all sites, we will measure VRQoL, using the Impact of Vision Impairment for Children Questionnaire.<sup>13</sup>

In the UK only, we will use three reading assessment tools which are available in English, but not Telugu, the local language spoken by most children in Hyderabad: (1) the Neale Analysis of Reading Ability (NARA, a test of reading accuracy, comprehension and speed),<sup>14 15</sup> a tool which measures visual function and comprehension. This is a tool commonly used in educational settings; it has only been used in one previous study with children with low vision. (2) To measure reading speed, we will use the International Reading Speed Texts (IREST).<sup>16</sup> (3) To measure peak reading speed, near VA and critical print size, we will use the MNREAD Acuity Charts, University of Minnesota, USA (MNREAD) test.<sup>17</sup> NARA and IREST will be tested at baseline using the participant's currently preferred LVA, and at 3 and 6 months using the allocated study device, excluding text-to-speech conversion; the assessment will be recorded as audio file for evaluation by a masked observer. MNREAD will be performed using spectacle correction only.

From the participant's diary and from semistructured interviews (see online supplementary material), we will record as free text the participant's experience of independent access to the curriculum, any adverse outcomes (loss of motivation, negative peer comments) and accessibility and impact of the allocated device on the participant. At the end of the observation period, we will collect feedback from the participants' teachers with regards to their impression of the impact of the allocated device on participants. We will report the cost of the devices as cost of device and training. We will provide initial training as part of the study. For ongoing technical support, we will rely on the manufacturers' and suppliers' support helplines.

Lastly, we will record demographic data (age at study entry, gender, ethnic group), ophthalmic history (time since diagnosis of VI, underlying ophthalmic diagnosis) and visual function (BCVA for distance and near, monocularly and binocularly, at each timepoint, recorded in logMAR; reading acuity on the MNREAD chart with refractive correction, but without LVA).<sup>18</sup>

### Participant timeline

Each participant will be in the study for 6 months from randomisation, with assessments at baseline, 3 and 6 months. The schedule of assessments is summarised in figure 2.

### Sample size

This trial will enrol 40 students, 20 in the UK and 20 in India. A sample size of 20 is commonly used in feasibility studies. As this is the first RCT of an AT for children with low vision, a formal sample size calculation was not possible; there are no data on expected recruitment and retention. We decided on a target sample size that appears achievable over a 6-month period at one site in India and two sites in the UK. In addition, there are no data on effect size of AT for reading in children, and no data on effect size of conventional LVAs on any of the selected outcomes other than near and distance acuity. A sample size of 20 per site therefore appears appropriate to gather initial information.

### Recruitment

We will identify eligible participants from low-vision clinics at Moorfields in London, from students known to their local vision impairment teams in Bedford Borough and Central Bedfordshire and the low-vision clinic at the LVPEI in Hyderabad.

The initial approach about the study will be conducted as follows:

1. At MEH London: a member of the clinical team providing low-vision services for children and young people will tell the family about the study and gain permission to be approached by a member of the research team. Moorfields also operate an opt-out policy which allows research teams to approach patients eligible for research about research projects. This policy clearly states that patients/families are free to decline study participation. There is no coercion.
2. At CDC Bedford: Students known to the Bedfordshire teachers for visually impaired students will be approached, along with their family.
3. At LVPEI: a member of the clinical team will first approach patients and their family.

Once a young person and their family have expressed an interest in taking part, we will provide verbal and written study information. An accredited paediatric optometrist who is a member of the research team (MDC, VKG, RT, SB) will obtain written consent from a parent or carer, and will invite children/young people to give their assent in writing or verbally.

### Assignment of interventions

#### Allocation sequence generation and implementation

Young people who agree to take part will be randomised to receive either a tablet computer with low-vision applications or standard low-vision care. Allocation will be at a 1:1 ratio. At MEH London and CDC Bedford, randomisation will be prepared by the senior data manager in the Research & Development (R&D) department using permuted

	STUDY PERIOD				
	Enrolment	Allocation	Post-allocation		Close-out
TIMEPOINT**	0	0	3 months	6 months	12 months
<b>ENROLMENT:</b>					
Eligibility screen	X				
Informed consent	X				
Demographic and clinical details, near and distance visual acuity	X				
Allocation		X			
<b>INTERVENTIONS:</b>					
Apple iPad with applications		X	X	X	
Standard LVA (magnifiers, telescopes, CCTV)		X	X	X	
<b>ASSESSMENTS:</b>					
Baseline and post-allocation: Device accessibility (Piano tiles) Functional Vision questionnaire (LV Prasad, Cardiff) VR-QoL questionnaire (IVI-C) Neale Analysis of Reading Ability International Reading Speed Texts (Telugu, English) Visual acuity distance, near Reading acuity		X	X	X	
Post-allocation outcomes: As Baseline, plus: Diary review and semi-structured interview: usage, independent access to curriculum, adverse outcomes			X	X	

**Figure 2** Schedule of enrolment, interventions and assessments (after SPIRIT<sup>20 21</sup>). CCTV, closed-circuit television; IVI-C, Impact of Vision Impairment for Children; LVA, low-vision aid; VRQoL, vision-related quality of life.

blocks of varying sizes in the statistical programme STATA. Researchers will phone Moorfields R&D department after each enrolment to obtain the randomisation allocation; the senior data manager will record patient's study ID, hospital number, randomisation allocation and randomisation date on the trial randomisation log file. Randomisation for the participants at the LVPEI, India, will use a web-based tool (<https://www.sealedenvelope.com>), operated by an optometrist in the low-vision clinic team who is not involved in the study. The researcher will contact the optometrist to obtain information about the allocated treatment as participants are enrolled.

#### Allocation concealment mechanisms

The study optometrist will contact the senior data manager (Moorfields) or the member of staff holding the randomisation schedule (LVP) for randomisation, so while allocation sequence is concealed from the research team, the allocated intervention will not be concealed. As participants attend a wide range of schools, the risk of contamination by participants exchanging allocated equipment is low. Each

participant will receive a password required to use their device and will be asked not to share it with others.

#### Masking

Masking of participants to the intervention will not be possible, which may cause performance bias. In order to avoid detection bias, we will mask outcome assessors to the intervention by recording reading performance as audio files (NARA, IREST), which will be subsequently evaluated by a masked observer. CVAQC and LVP-FVQII questionnaires will be administered by a masked observer. Diaries will be reviewed in masked fashion.

#### Data collection, management and analysis

##### Data collection methods

Data will be collected from patients in accordance with the patient consent form, patient information sheet and the study protocol. Patients will be assigned a study number after consent prior to randomisation. This number will be used on all case report forms, questionnaires and interview materials. Two separate databases

will be built, one for UK and another for LVP which will capture pilot information for analysis. This will contain demographic data and information on the primary outcomes only.

Exploratory data will be captured as follows: all sites will use a standardised paper-based case report form and a standardised Microsoft Office Excel spreadsheet as database. At MEH London, MC will collect data and transfer them onto the spreadsheet; at CDC Bedford, RT and at LVP, SB and VKG will carry out data collection and transfer.

### Data management (handling, processing and storage)

Data within the MEH database will be analysed by AQ, who will not meet the participants or be involved in data collection. UCL as study sponsor will act as the data controller for the study. The data from LVP will remain with VKG for statistical analysis and she will act as the data controller.

For the data from MEH London and CDC Bedford, ADN will process, store and dispose of all described data in accordance with all applicable legal and regulatory requirements, including the Data Protection Act 1998 and any amendments thereto. Data will be stored centrally and kept in locked, secure access filing cabinets or on password-protected NHS computers on hospital premises; this includes electronic data and case report forms, questionnaires and interview materials.

For the data from the LVPEI, India, VKG will process, store and dispose of all described data in accordance with all applicable legal and regulatory requirements. Data will be stored centrally at the LVPEI, Hyderabad, and kept in locked, secure access filing cabinets or on password-protected hospital computers on hospital premises; this includes electronic data and case report forms, questionnaires and interview materials.

UCL and each participating site recognise that there is an obligation to archive study-related documents at the end of the study. The chief investigator confirms that she will archive the study master file at Moorfields Eye Hospital for the period stipulated in the protocol and in line with all relevant legal and statutory requirements. The principal investigator at each participating site agrees to archive his/her respective site's study documents for Moorfields Eye Hospital, the Child Development Centre Bedford and the LVPEI, and in line with all relevant legal and statutory requirements.

### Statistical methods

This is a pilot RCT, and data will be used to help design a definitive study. The dataset in India and the dataset in the UK will be handled and analysed separately, as randomisation methods and some of the outcomes measures (such as functional visual ability) differ between the two settings. We will use descriptive statistical methods only (proportions, mean/SD if data are normally distributed and median/IQR if not), and will not make comparisons between groups.

### Participant retention

This is one of the primary outcomes mentioned earlier. Compliance, defined as usage of the allocated device, will be monitored by diary. We will attempt to reduce attrition bias by staying in touch with participants throughout the study, by text messages, emails and phone calls and (in Bedford) visits to the educational setting. If participants wish to withdraw after they have been allocated to a treatment group, we will ask them to undergo a final assessment. We will record reasons for withdrawal on the case report form (free text). Data collected up to the point of withdrawal will be used in the data analysis.

### Data monitoring

The sponsor's data monitoring and auditing procedures will apply, that is, each site will, twice a year, send the sponsor an update on the following information: delegation log, adverse event log and deviation log. In addition, the lead site (Moorfields London) will send the sponsor a copy of the annual progress report when it is submitted to the Research Ethics Committee.

### Author affiliations

<sup>1</sup>Optometry, Moorfields Eye Hospital, London, UK

<sup>2</sup>Optometry, Moorfields Eye Hospital at Bedford Hospital, Bedford, UK

<sup>3</sup>Sensory and Communication Support Team, The Child Development Centre, Kempston, Bedford, UK

<sup>4</sup>Meera and L B Deshpande Centre for Sight Enhancement, L V Prasad Eye Institute, Banjara Hills, Hyderabad, Telangana, India

<sup>5</sup>NIHR Biomedical Research Centre, UCL Institute of Ophthalmology, London, UK

<sup>6</sup>Department of Primary Care & Public Health Sciences, King's College London, London, UK

**Contributors** MDC, HU, VKG, CB and AD-N designed the study and secured funding. MDC, RT, HU, SB and VKG conducted the study and acquired the data. AQ, CB, MDC and VKG analysed the data. The present manuscript was drafted by AD-N and critically reviewed and amended by all authors; the revision was equally reviewed by all authors.

**Funding** This study was funded by British Council for the Prevention of Blindness and by Apple Inc, and sponsored by University College London.

**Competing interests** None declared.

**Ethics approval** National Research Ethics Committee North of Scotland/Grampian 15/NS/0068.

**Provenance and peer review** Not commissioned; externally peer reviewed.

**Open Access** This is an Open Access article distributed in accordance with the Creative Commons Attribution Non Commercial (CC BY-NC 4.0) license, which permits others to distribute, remix, adapt, build upon this work non-commercially, and license their derivative works on different terms, provided the original work is properly cited and the use is non-commercial. See: <http://creativecommons.org/licenses/by-nc/4.0/>

© Article author(s) (or their employer(s) unless otherwise stated in the text of the article) 2017. All rights reserved. No commercial use is permitted unless otherwise expressly granted.

### REFERENCES

1. World Health Organization. Management of low vision in children. Bangkok 1992.
2. Gilbert C, Muhiit M. Twenty years of childhood blindness: what have we learnt? *Community Eye Health* 2008;21:46–7.
3. Gilbert CE, Ellwein LB. Refractive Error Study in Children Study Group. Prevalence and causes of functional low vision in school-age children: results from standardized population surveys in Asia, Africa, and Latin America. *Invest Ophthalmol Vis Sci* 2008;49:877–81.

4. Frick KD, Hanson CL, Jacobson GA. Global burden of trachoma and economics of the disease. *Am J Trop Med Hyg* 2003;69(5 Suppl):1–10.
5. RNIB. Eye Work Project. 2013 <http://www.rnib.org.uk/aboutus/contactdetails/nireland/services/niemployment/pages/eyework.aspx> (accessed 20 Mar 2013).
6. Alves CC, Monteiro GB, Rabello S, et al. Assistive technology applied to education of students with visual impairment. *Rev Panam Salud Publica* 2009;26:148–52.
7. Gill K, Mao A, Powell AM, et al. Digital reader vs print media: the role of digital technology in reading accuracy in age-related macular degeneration. *Eye* 2013;27:639–43.
8. Crossland MD, Silva RS, Macedo AF. Smartphone, tablet computer and e-reader use by people with vision impairment. *Ophthalmic Physiol Opt* 2014;34:552–7.
9. Barker L, Thomas R, Rubin G, et al. Optical reading aids for children and young people with low vision. *Cochrane database of systematic reviews* 2015;3:CD010987.
10. Thomas R, Barker L, Rubin G, et al. Assistive technology for children and young people with low vision. *Cochrane database of systematic reviews* 2015;6:CD011350.
11. Khadka J, Ryan B, Margrain TH, et al. Development of the 25-item Cardiff Visual Ability Questionnaire for Children (CVAQC). *Br J Ophthalmol* 2010;94:730–5.
12. Gothwal VK, Lovie-Kitchin JE, Nutheti R. The development of the LV Prasad-Functional Vision Questionnaire: a measure of functional vision performance of visually impaired children. *Invest Ophthalmol Vis Sci* 2003;44:4131–9.
13. Cochrane GM, Marella M, Keeffe JE, et al. The impact of Vision Impairment for Children (IVI\_C): validation of a vision-specific pediatric quality-of-life questionnaire using Rasch analysis. *Invest Ophthalmol Vis Sci* 2011;52:1632–40.
14. Douglas G, Grimley M, Hill E, et al. The use of the NARA for assessing the reading ability of children with low vision. *Br J Vis Impair* 2002;20:68–75.
15. Hill E, Long R, Douglas G, et al. Neale analysis of Reading Ability for readers with low vision. *A supplementary manual to aid the assessment of partially sighted pupils' reading using the Neale Analysis of Reading Ability (NARA) Birmingham, UK: Visual Impairment Centre for Teaching and Research; School of Education; University of Birmingham* 2005.
16. Trauzettel-Klosinski S, Dietz K. Standardized Assessment of Reading Performance: the New International Reading speed texts IReST. *Investigative Ophthalmology & Visual Science* 2012;53:5452–61.
17. Legge GE, Ross JA, Luebker A, et al. Psychophysics of Reading. VIII. the Minnesota Low-Vision Reading Test. *Optometry and Vision Science* 1989;66:843–53.
18. Virgili G, Cordaro C, Bigoni A, et al. Reading acuity in Children: evaluation and reliability using MNREAD Charts. *Investigative Ophthalmology & Visual Science* 2004;45:3349–54.
19. Eldridge SM, Chan CL, Campbell MJ, et al. PAFS consensus group. CONSORT 2010 statement: extension to randomised pilot and feasibility trials. *Pilot Feasibility Stud* 2016;2:64.
20. Chan AW, Tetzlaff JM, Altman DG, et al. SPIRIT 2013 statement: defining standard protocol items for clinical trials. *Ann Intern Med* 2013;158:200–7.
21. Chan AW, Tetzlaff JM, Gøtzsche PC, et al. SPIRIT 2013 explanation and elaboration: guidance for protocols of clinical trials. *BMJ* 2013;346:e7586.