

Correction

Spoelman WA, Bonten TN, de Waal MWM, *et al.* Effect of an evidence-based website on healthcare usage: an interrupted time-series study. *BMJ Open* 2016;6:e013166. doi: 10.1136/bmjopen-2016-013166

Figure 2 and Figure 3 were the wrong way round in the original publication. The correct Figures and their captions are shown below.

Figure 2 Rate of short consultations, long consultations and consultations by phone with trend lines.’ actually displays the top 10 topics and the control group.

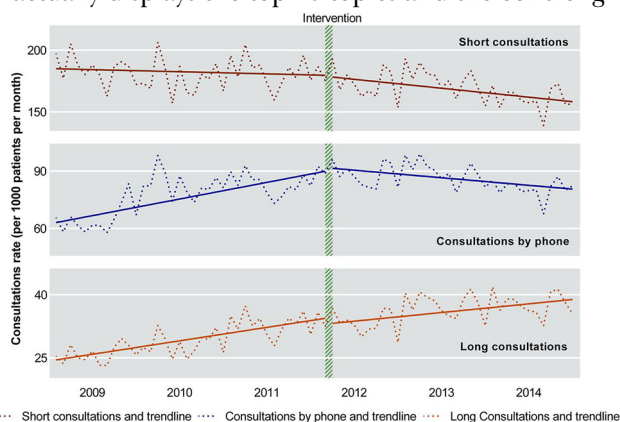
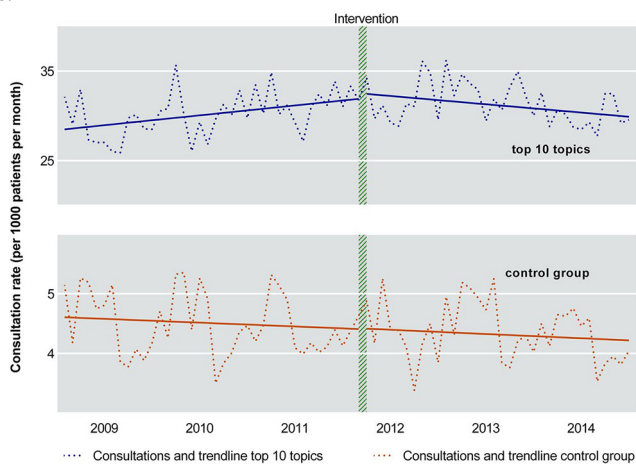


Figure 3 Rate of consultations in the top 10 topics of the website and reference group with trend lines.’



Open Access This is an Open Access article distributed in accordance with the Creative Commons Attribution Non Commercial (CC BY-NC 4.0) license, which permits others to distribute, remix, adapt, build upon this work non-commercially, and license their derivative works on different terms, provided the original work is properly cited and the use is non-commercial. See: <http://creativecommons.org/licenses/by-nc/4.0/>

BMJ Open 2017;7:e015878. doi:10.1136/bmjopen-2016-013166corr1

