

SUPPLEMENTARY FIGURE LEGENDS

Figure S1: Public-sector expenditure on healthcare (PEH) and social care (PES). Data are shown from 2001/02–2014/15. Top plot shows data for PEH whereas bottom plot shows data for PES. Solid lines correspond to total PEH or PES in billions of pounds (left hand y-axis). Dotted lines correspond to PEH or PES in pounds per capita (right hand y-axis) calculated from PEH/PES and population size as estimated by the UK's Office for National Statistics (ONS). Blue lines indicate nominal expenditure. Red lines indicate real expenditure adjusted to 2014/15 prices.

Figure S2: Time-trend projections of mortality rates by place of death. Mortality rates (y-axis) per year from 2001 to 2014 are shown for five places of death with 'Other' representing any place of death that doesn't fall into the other four categories (data are unavailable for a breakdown of where these other places might be). The black and blue lines represent actual ASDR for the 2001–10 and 2011–14 periods, respectively. The red line represents predicted ASDR using 2001–10 as an observation base while the 95% CIs are denoted by the beige-colored area.

Figure S3: Population mortality projections to 2020. Age-standardised death rates (ASDR) (left hand y-axis) and difference in the number of deaths between actual and predicted rates (right hand y-axis) projected annually to 2020 are shown. Black lines indicate 2009–14 base-fitted (black solid line) and 2015–20 base-forecasted (black dotted line) values. Red lines indicate the same using an observation base for the years 2001–2010. The bisque-coloured area denotes the 95% CIs for the model for 2009–14 data, and the pink area, the 95% CIs for the model for 2001–10 data. The grey bars represent the difference between the number of deaths projected using a 2009–14 observation base and the number forecasted using a 2001–10 observation base, where positive values correspond to excess deaths. Error bars signify 95% CIs. *P < 0.05, **P < 0.01 and ***P < 0.001.

Figure S1

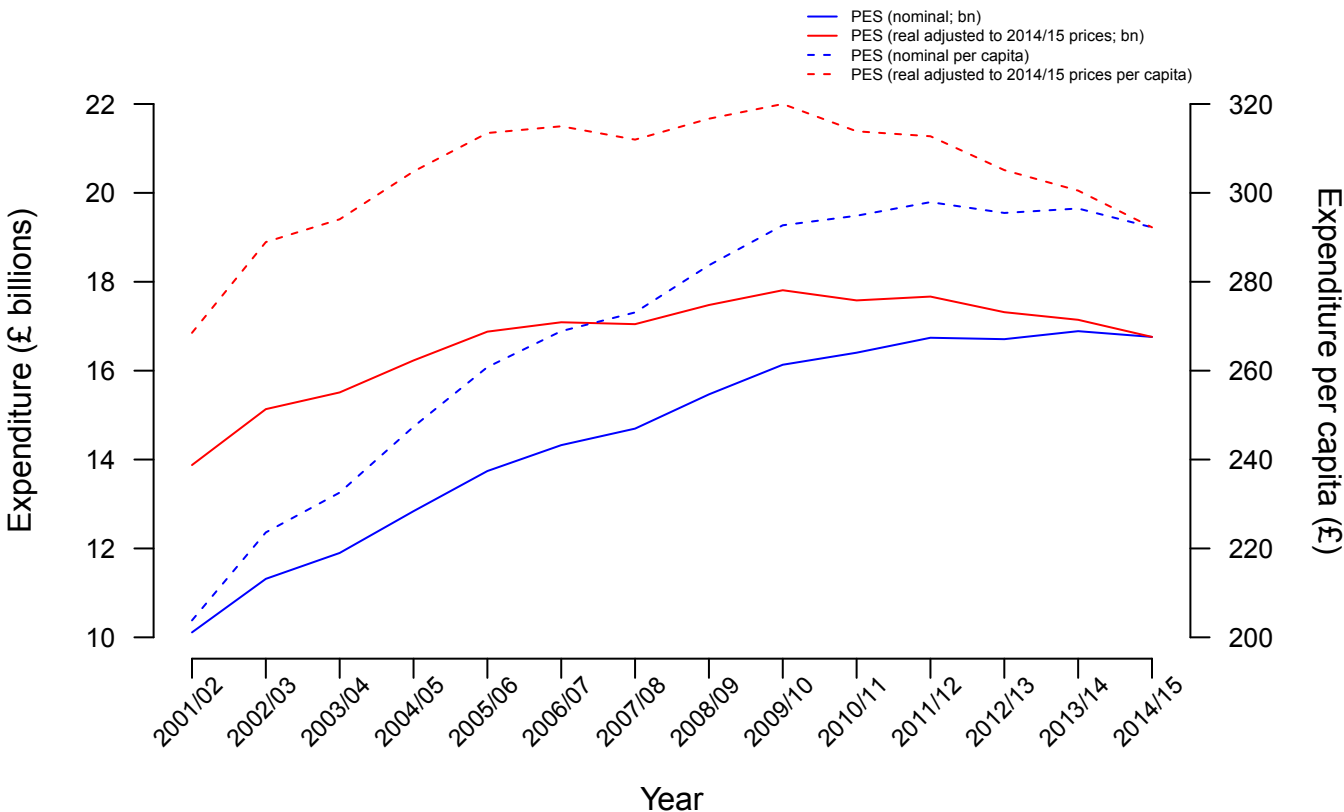
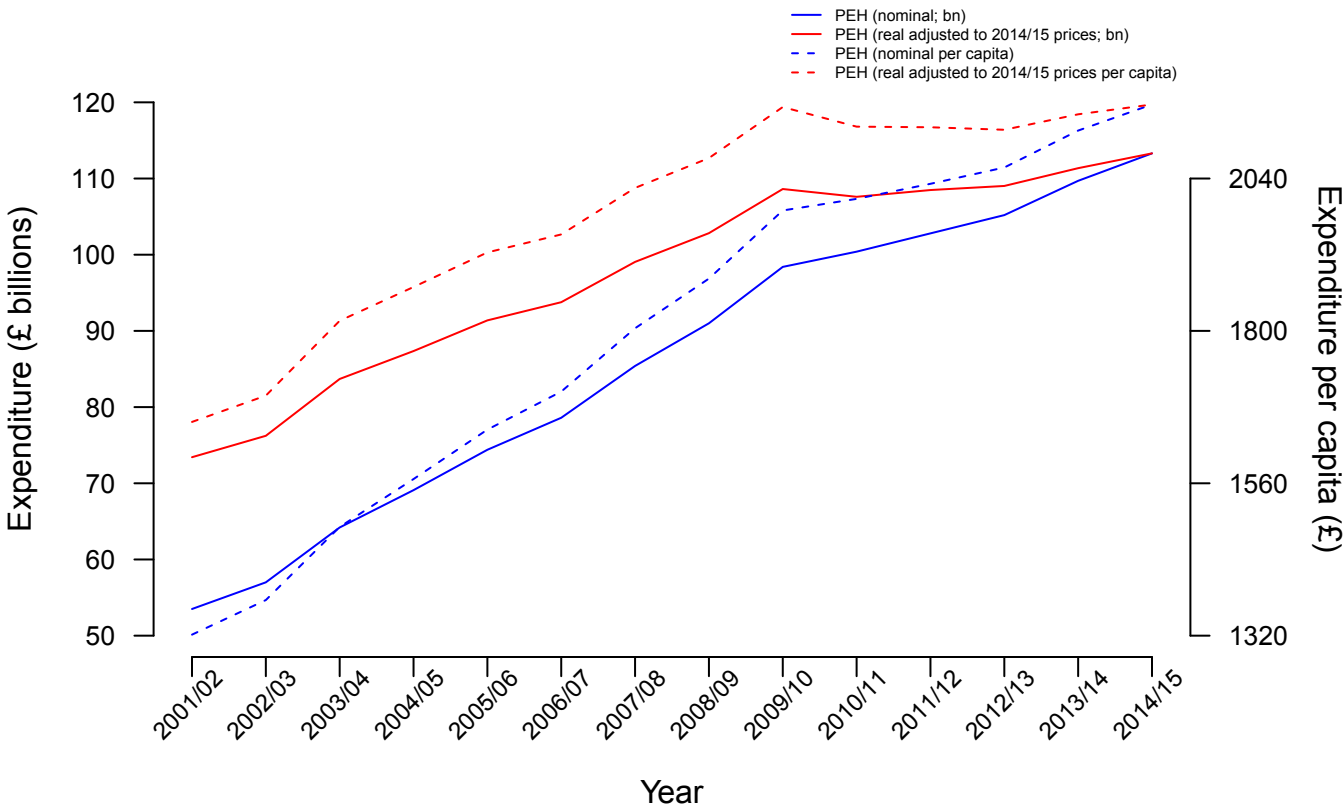
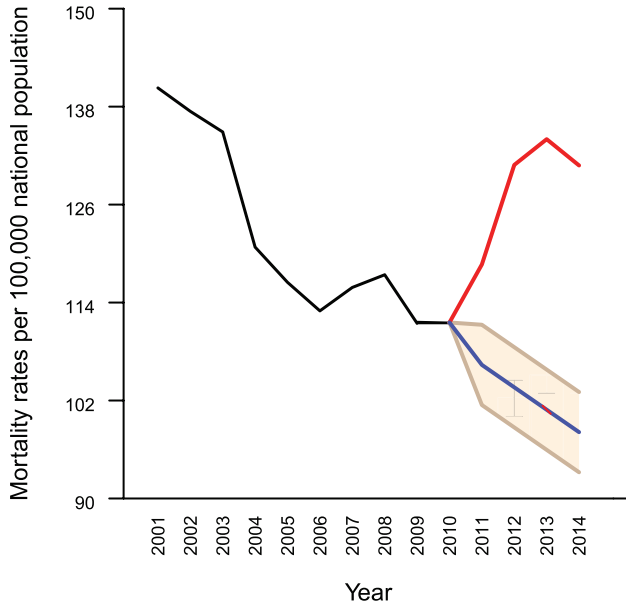
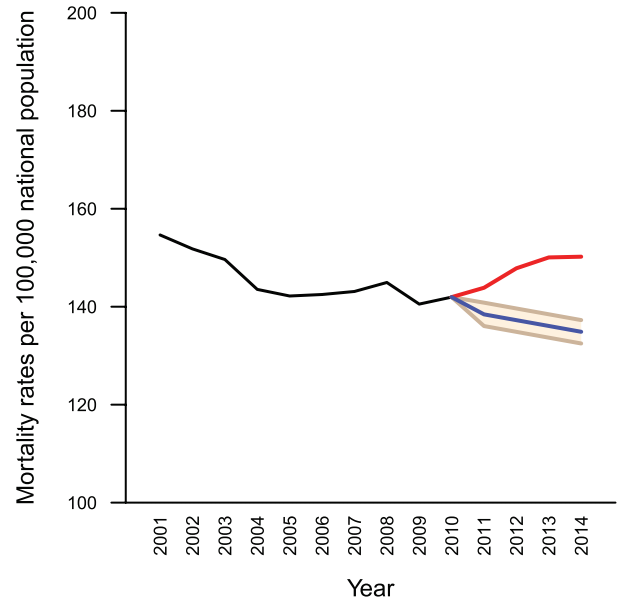


Figure S2

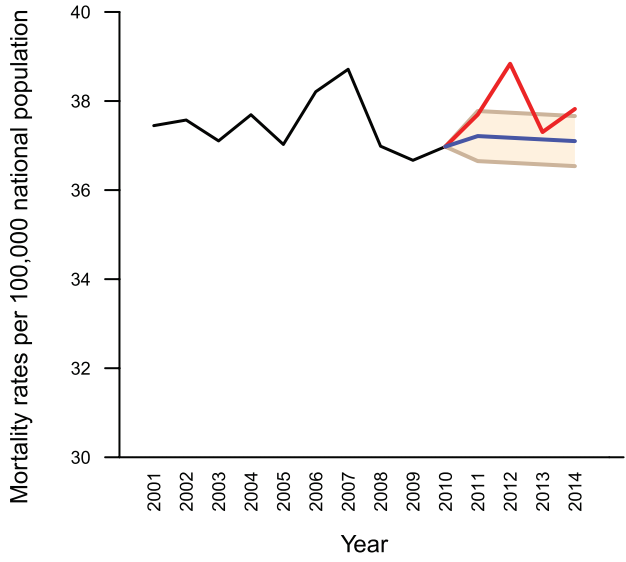
Care Home



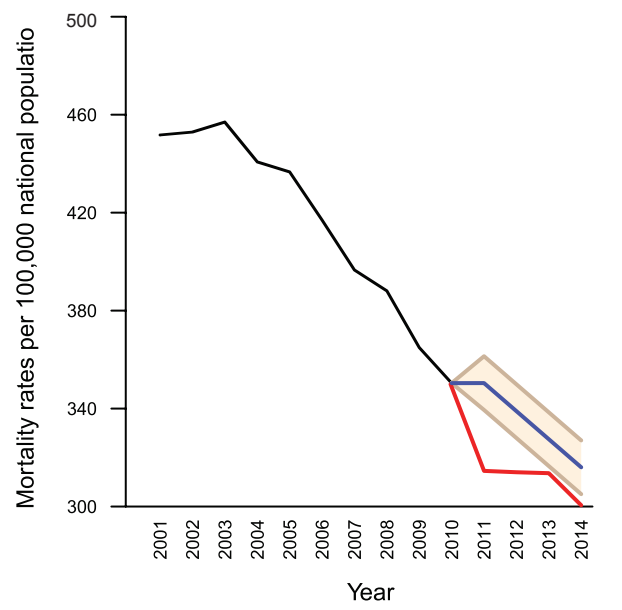
Home



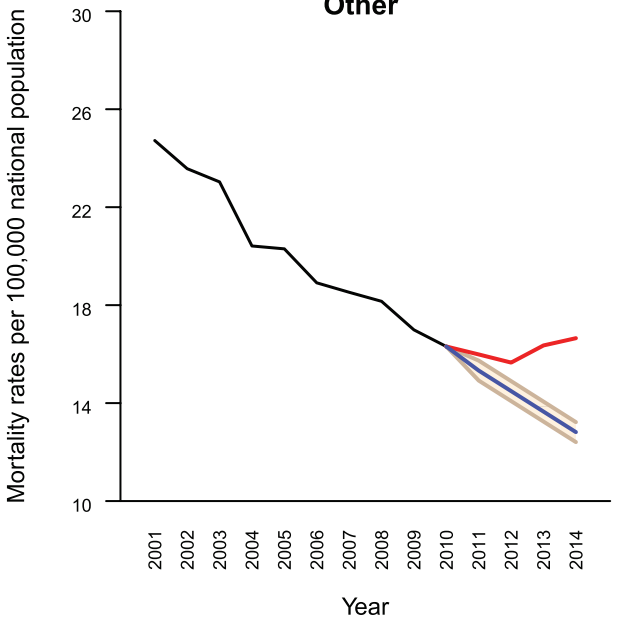
Hospice



Hospital



Other



— Actual
— Forecast

Figure S3

