

Appendix 3: Survival Analysis

A comparison of the revision rates of the unilateral versus bilateral Pinnacle prostheses. All patients in the study were included in this analysis with revision for all causes included.

	Cumulative percentage probability of revision (95% CI) at:				
	Year 1	Year 3	Year 5	Year 7	Year 9
Bilateral	1.0 (0.1 – 7.0)	7.1 (3.5 – 14.5)	16.3 (10.4 – 25.6)	24.5 (17.1 – 35.1)	26.1 (18.5 – 37.5)
Number at risk	100	92	81	56	20
Unilateral	0.3 (0.1 – 2.1)	2.6 (1.2 – 4.5)	6.3 (4.3 – 9.4)	11.5 (8.6 - 15.4)	13.8 (10.4 – 18.4)
Number at risk	389	374	344	247	103

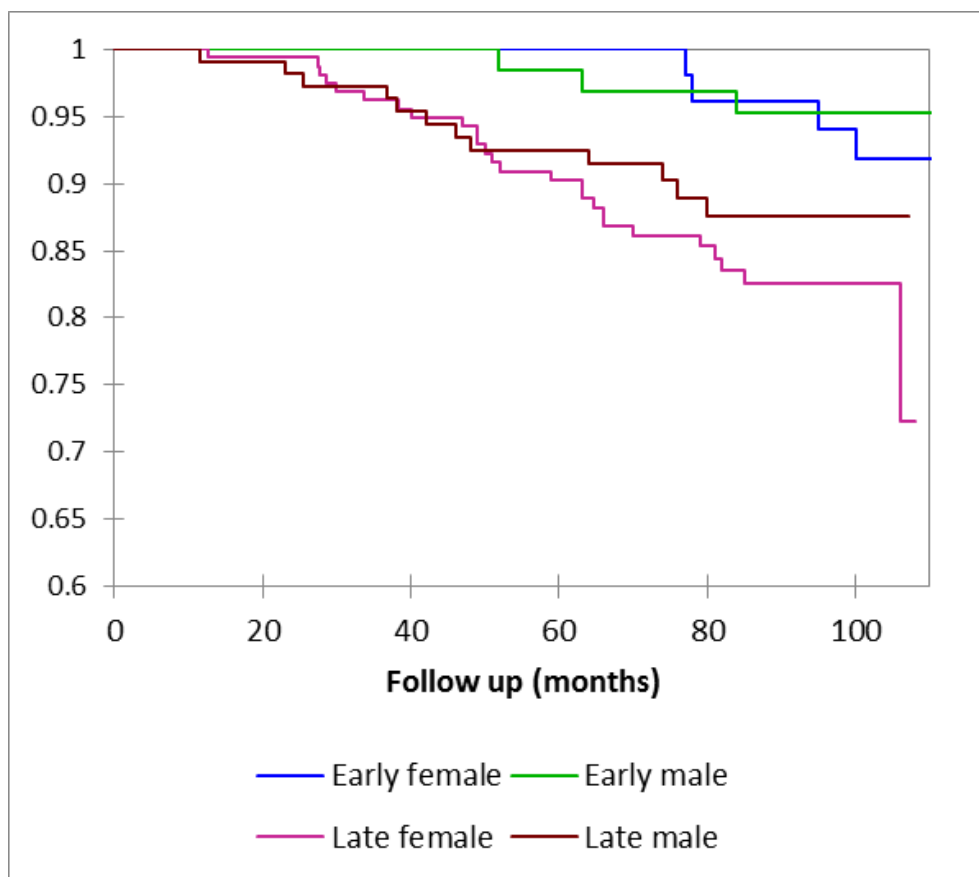
A comparison of the revision rates of the Pinnacle prostheses implanted into male and female patients. All patients in the study were included in this analysis with revision for all cause included.

	Cumulative percentage probability of revision (95% CI) at:				
	Year 1	Year 3	Year 5	Year 7	Year 9
Female	0.7 (0.2 – 2.8)	4.7 (2.7 – 7.9)	10.9 (7.8 – 15.3)	18.2 (14.1 – 23.6)	22.1 (17.1 – 28.6)
Number at risk	282	266	240	172	57
Male	0.5 (0.1 – 3.4)	2.0 (0.7 – 5.2)	5.0 (2.7 – 9.1)	8.6 (5.3 - 13.7)	8.6 (10.4 – 18.4)
Number at risk	207	199	185	130	103

Kaplan-Meier estimates of the cumulative percentage probability of revision (95% CI) of Pinnacle hips implanted into female patients. All cause revision. As there was a shorter follow up with the size 50mm liners, joints failed after six years of surgery and unrevised joints with less than six years of follow up were removed.

	Cumulative percentage probability of revision (95% CI) at:				
	Year 1	Year 3	Year 5	Year 7	Year 8
Liner size 50	3.6 (0.5 – 24.5)	14.3 (5.8 – 35.4)	25.0 (13.2 – 47.5)	25.0 (13.2 – 47.5)	25.0 (13.2 – 47.5)
Number at risk	28	24	23	20	7
Liner size 52	0.6 (0.1 – 4.6)	5.2 (2.6 – 10.1)	13.5 (9.1 -20.2)	18.1 (12.9 – 25.3)	18.1 (12.9 – 25.3)
Number at risk	155	148	135	110	67
Liner size 54	0.0	4.4 (1.1 – 17.2)	8.9 (3.5 -22.7)	8.9 (3.5 -22.7)	8.9 (3.5 -22.7)
Number at risk	45	44	43	36	24
Liner size 56/58	0	0	0	0	0
Number at risk	17	17	17	16	9

Kaplan-Meier estimates of the cumulative percentage probability of revision (95% CI) of Pinnacles implanted into female and male patients belonging to the early and late cohorts. Survival curves top, with corresponding cumulative percentage probabilities bottom.



	Cumulative percentage probability of revision (95% CI) at:				
	Year 1	Year 3	Year 5	Year 7	Year 8
Early female cohort	0.0	0.0	0.0	3.9 (1 – 15.3)	8.1 (3.2 – 20.7)
Number at risk	53	53	53	49	46
Early male cohort	0.0	0.0	1.6 (0.2 – 11.1)	4.8 (1.6 – 14.4)	4.8 (1.6 – 14.4)
Number at risk	67	65	63	61	60
Late female cohort	0.0	4.4 (2.2 – 9.2)	9.8 (6.0 – 15.8)	16.5 (11.4 – 23.8)	17.4 (12.1 – 25.0)
Number at risk	160	152	152	90	35
Late male cohort	1.3 (0.1 – 6.5)	3.7 (1.4 – 9.6)	7.5 (3.8 – 14.6)	9.7 (5.4 – 17.6)	12.5 (7.3 – 21.4)

Number at risk	109	105	95	75	17
----------------	-----	-----	----	----	----