

BMJ Open

Cost-effectiveness analyses of self-harm strategies aimed at reducing the mortality of pesticide self-poisonings in Sri Lanka: A study protocol

| | |
|---------------------------------|--|
| Journal: | BMJ Open |
| Manuscript ID: | bmjopen-2014-007333 |
| Article Type: | Protocol |
| Date Submitted by the Author: | 29-Nov-2014 |
| Complete List of Authors: | Madsen, Lizell; University of Copenhagen, Department of International Health, Immunology and Microbiology Eddleston, Michael; Pharmacology, Toxicology & Therapeutics, University of Edinburgh; University of Copenhagen, Department of International Health, Immunology and Microbiology Hansen, Kristian; London School of Hygiene and Tropical Medicine, Department of Global Health and Development Pearson, Melissa; Pharmacology, Toxicology & Therapeutics, University of Edinburgh Agampodi, Suneth; Rajarata University, Department of Community Medicine Jayamanne, Shaluka; University of Peradeniya, South Asian Clinical Toxicology Research Collaboration; University of Kelaniya, Department of Medicine Konradsen, Flemming; University of Copenhagen, Department of International Health, Immunology and Microbiology; University of Peradeniya, South Asian Clinical Toxicology Research Collaboration |
| Primary Subject Heading: | Global health |
| Secondary Subject Heading: | Health economics |
| Keywords: | HEALTH ECONOMICS, Suicide & self-harm < PSYCHIATRY, PUBLIC HEALTH |
| | |

SCHOLARONE™
Manuscripts

Cost-effectiveness analyses of self-harm strategies aimed at reducing the mortality of pesticide self-poisonings in Sri Lanka: A study protocol

Lizell Bustamante Madsen¹, Michael Eddleston^{1,2,3}, Kristian Schultz Hansen⁴, Melissa Pearson^{2,3}, Suneth Agampodi⁵, Shaluka Jayamanne^{3,6} and Flemming Konradsen^{1,3}

¹ Department of International Health, Immunology and Microbiology, Faculty of Health Sciences, University of Copenhagen, Copenhagen, Denmark.

² Pharmacology, Toxicology & Therapeutics, University/BHF Centre for Cardiovascular Science, University of Edinburgh, Edinburgh, UK.

³ South Asian Clinical Toxicology Research Collaboration, Faculty of Medicine, University of Peradeniya, Peradeniya, Sri Lanka.

⁴ Department of Global Health and Development, London School of Hygiene and Tropical Medicine, London, UK.

⁵ Department of Community Medicine, Faculty of Medicine and Allied Sciences, Rajarata University, Saliyapura, Sri Lanka.

⁶ Department of Medicine, Faculty of Medicine, University of Kelaniya, Ragama, Sri Lanka.

Reprints or correspondence:

Lizell B Madsen, Department of International Health, Immunology and Microbiology, Faculty of Health Sciences, University of Copenhagen, Oester Farimagsgade 5, PO BOX 2099, DK-1014 Copenhagen K, Denmark. Tel: +45 35 32 71 26, Fax: +45 35 32 77 36, E-mail (can be published): lizell@sund.ku.dk

Keywords: Cost-effectiveness analysis, self-harm, suicide, intervention, Sri Lanka

Word count (from Introduction to end of Discussion): 3,917, 1 figure, 6 tables.

For peer review only

Cost-effectiveness analyses of self-harm strategies aimed at reducing the mortality of pesticide self-poisonings in Sri Lanka: A study protocol

Lizell Bustamante Madsen¹, Michael Eddleston^{1,2,3}, Kristian Schultz Hansen⁴, Melissa Pearson^{2,3}, Suneth Agampodi⁵, Shaluka Jayamanne^{3,6} and Flemming Konradsen^{1,3}

¹ Department of International Health, Immunology and Microbiology, Faculty of Health Sciences, University of Copenhagen, Copenhagen, Denmark.

² Pharmacology, Toxicology & Therapeutics, University/BHF Centre for Cardiovascular Science, University of Edinburgh, Edinburgh, UK.

³ South Asian Clinical Toxicology Research Collaboration, Faculty of Medicine, University of Peradeniya, Peradeniya, Sri Lanka.

⁴ Department of Global Health and Development, London School of Hygiene and Tropical Medicine, London, UK.

⁵ Department of Community Medicine, Faculty of Medicine and Allied Sciences, Rajarata University, Saliyapura, Sri Lanka.

⁶ Department of Medicine, Faculty of Medicine, University of Kelaniya, Ragama, Sri Lanka.

Reprints or correspondence:

Lizell B Madsen, Department of International Health, Immunology and Microbiology, Faculty of Health Sciences, University of Copenhagen, Oester Farimagsgade 5, PO BOX 2099, DK-1014 Copenhagen K, Denmark. Tel: +45 35 32 71 26, Fax: +45 35 32 77 36, E-mail (can be published): lizell@sund.ku.dk

Keywords: Cost-effectiveness analysis, self-harm, suicide, intervention, Sri Lanka

Word count (from Introduction to end of Discussion): 3,917, 1 figure, 6 tables.

ABSTRACT

Introduction

An estimated 803,900,000 people worldwide died as a result of self harm in 2012. The deliberate ingestion of pesticides has been identified as the method most frequently used to commit fatal self-harm globally. In Sri Lanka it is estimated that up to 60% of all suicides are committed using this method. The aim of the present study is to assess the cost-effectiveness of an on-going safe storage intervention currently taking place in a rural Sri Lankan district and to model the cost-effectiveness of implementing the safe storage intervention as well as four potential interventions (legislative, medical management, follow-up contact and mobile phone contact) on a national level.

Methods and analysis

Study design for all the strategies is a cost-effectiveness analysis. A governmental perspective is adopted. The time horizon for tracking the associated costs and health outcomes of the safe storage intervention on district level runs over three years. The time horizon is extended to five years when modelling a full national roll-out of the respective interventions. The discounting of costs and health outcomes are undertaken at the recommended real rate of 3%. Threshold analyses of the modelled strategies are employed to assess the strategies potential for cost-effectiveness, running scenarios with health outcome improvements ranging from 1% to 100%. Sensitivity analyses are also

performed. The main outcome measures of the safe storage intervention are incremental cost-effectiveness ratios.

Ethics and dissemination

Ethical approval was granted for the safe storage project from the University of Peradeniya, Sri Lanka in March of 2008. An amendment for the present study was granted from Rajarata University of Sri Lanka in November of 2013. Findings will be disseminated to public and private stakeholders in local and national government in Sri Lanka as well as the wider academic audience through peer-reviewed publications and international conferences.

Trial registration number

The safe storage cluster trial is registered with the Clinical Trials, ref: NCT1146496 (<http://clinicaltrialsfeeds.org/clinical-trials/show/NCT1146496>).

STRENGTHS AND LIMITATIONS OF THE STUDY

- The study will generate new knowledge to an under-researched topic, i.e. the cost-effectiveness of interventions aimed at reducing the mortality of pesticide self-poisoning.
- The strength of the study lies in the randomised design of the safe storage trial and the large sample size which allows sufficient power to assess the intervention’s effect on self-harm.
- The chosen type of analysis and outcome measure narrows the field of comparisons with other types of interventions.

- Analyses of potential preventive strategies aimed at reducing the mortality of pesticide self-poisoning are reduced to modelling and threshold analyses due to the limited data available.

For peer review only

INTRODUCTION

The World Health Organization (WHO) has estimated that 803,900 people worldwide died as a result of self harm in 2012.¹ In the recently published Global Burden of Disease Study 2010, self-harm was identified as the second most important type of injury reported and it was among the 25 leading causes of disease burden.²

The WHO has recognised deliberate ingestion of pesticides as the most frequently used method of self-harm globally.³ In a systematic review from 2007, it was estimated that pesticide self-poisoning was responsible for as much as one third of all suicides globally.⁴ In China it is estimated that as much as 58% of all suicides are due to deliberate pesticide ingestion, while Patel et al. recently found that the method was employed in approximately half of all suicides in India.^{5,6}

In 1995, Sri Lanka had one of the highest suicide rates in the world with approximately 47 suicides per 100,000 population.⁷ The country has had great success in reducing the suicide incidence rates through bans of the most toxic pesticides, and in 2005 suicide rates had fallen to 24 per 100,000.⁷ A retrospective study of in-patient records in southern rural Sri Lanka from 1990 to 2002 found that 61% of all acute poisoning cases admitted to hospital were due to pesticide ingestion.⁸ Police records for 2011 showed that 46% of all suicides registered were due to the ingestion of pesticides and insecticides.⁹ Suicide by deliberate ingestion of pesticides therefore continues to be a major public health issue in Sri Lanka as an important cause of premature mortality.

It is hypothesised that pesticide ingestion contributes so heavily to the patterns of suicide in low-income countries because of the easy accessibility to pesticides in farming households and in nearby shops as well as the high overall case fatality, which ranges from less than 5% to 70%, depending

on the pesticides used.^{4,10-12} Yang et al. (2005) found that 61% of all fatal pesticide self-poisoning cases in China were due to unsuccessful medical resuscitation.⁶

There is an urgent need for strategies aimed at preventing deaths from pesticide self-poisoning in Sri Lanka, as well as the rest of the region.^{4,13} A self-harm prevention strategy that has been suggested in the literature is the restriction of access to means.^{14,15} With regards to self-harm using pesticides, it has been recommended by the WHO, and in the literature to restrict the availability of highly toxic pesticides, e.g. by banning the production, import and use of a pesticides, or to restrict access to pesticides by keeping them in locked containers, and reduce the use of pesticides in agricultural practices.^{12,13,16-18} A suggested treatment strategy involves improvement of the medical management of the poisoning cases by ensuring that hospitals have adequate supplies of antidotes, respirators and trained personnel.^{12,17,19} Finally, previous attempts at self-harm is a risk factor for repetition, and findings suggest that post interventions focusing on follow-up contract with people, who have previously attempted self-harm could reduce suicide rates.^{14,20-22}

For decision-makers to determine which health related interventions to implement in their country several factors must be taken into consideration, including public health and economic considerations. The direct and indirect economic costs of self-harm and suicide include emergency services and intensive hospital care as well as costs of lost productivity. A study from Sri Lanka estimated the total direct cost to the Ministry of Health of treating self-poisoned patients to be US\$ 1,072,571. Studies from Scotland and Ireland estimated the cost per suicide to society to be US\$ 3,067,463 and US\$ 2,066,886, respectively (inflationary adjustments have been made to bring all costs to year 2013).²³⁻²⁵ The pain and grief that family members and friends suffer can also be immense and affect their ability to function in society.¹² The extensive costs of pesticide self-

poisonings to families, society and the general economy therefore suggest a strong economic incentive for investment in self-harm interventions.

Presently very little evidence exists on the cost-effectiveness of interventions aimed at reducing the mortality from pesticide self-poisoning which could be used to prioritise their introduction. The overall aim of the study is to address this evidence gap by (1) assessing the cost-effectiveness of an on-going safe storage intervention currently taking place in rural Sri Lanka; (2) assessing the cost-effectiveness of implementing the safe storage intervention on a national level, and (3) modelling the cost-effectiveness of implementing four potential interventions (legislative, medical management, follow-up contact (physical contact through a volunteer organisation and mobile phone contact)) on a national level. In the following, the outline of the economic evaluation of all interventions is presented.

METHODS AND ANALYSIS

Overview of the strategies

Safe storage intervention

The focus of the research is an on-going community-based, cluster randomised controlled trial (RCT) which is presently being conducted in the Anuradhapura district of Sri Lanka’s North Central Province. The aim of the RCT is to evaluate the effectiveness of storing pesticides in specially designed lockable containers in reducing the mortality of pesticide self- poisoning as well as the overall incidence of self-harm, and mortality following self-harm.²⁶ Access to pesticides is restricted by storing them in lockable containers which are then partially buried underground outside the house. The full details on the design and methods employed in the RCT are provided

elsewhere (see reference 26 for details). The trial is registered on Clinical Trials, ref: NCT1146496 (<http://clinicaltrialsfeeds.org/clinical-trials/show/NCT1146496>).

Study sample and sample size calculation

The trial has recruited 53,471 households from a total of 180 clusters since 31 December 2010 from the Mahaweli H region in the North Central Province in Sri Lanka, including the divisional secretariats of Thambuthegama, Talawa, Galnewa, Rajanganaya, Nochchiyagama and Ipologama (see figure 1). The randomisation unit was the clusters, primarily villages, which were allocated to either the intervention or control group.²⁶

All households in the study area were approached, briefly introduced to the trial and then they were invited to give verbal consent to participation. Inclusion criteria were households with a resident farmer, or reported use of pesticides or storage of these. Exclusion criteria included villages that had been recruited to previous pilot studies of pesticide safe storage, and households without an adult available to provide consent.²⁶

Under the assumptions that 20% of individuals in the intervention arm lived in households not using a lockable container, and 5% of individuals in the control arm lived in a household using one, it was estimated that 223,925 person years of follow-up were required in each arm to detect a 30% reduction in pesticide self-poisoning with 80% power at the 5 % significance level.

Legislation

In 1995, the Sri Lankan government implemented a national policy banning all pesticide formulations of WHO hazard class Ia/Ib.²⁷ In the legislative strategy, it is assumed that all pesticide formulation(s) of WHO hazard class I and II (moderately hazardous) are banned from production, import and use, and another product is recommend by the Department of Agriculture to substitute

these products. The costs of implementing and enforcing a policy banning all class I and II pesticide formulations used for the most commonly grown crops and vegetable products are assessed.

Medical management

In the treatment strategy, it is assumed that case management of pesticide self-poisoning can be improved by ensuring that peripheral hospital facilities have adequate supplies of drugs, including antidotes, ventilators, lab facilities and other necessary equipment to treat and transfer patients. In the analyses, it is determined what such essential packages should entail and how many of these are needed in the hospital facilities at each level. The strategy also includes targeted training of health personnel in pesticide poisoning case management, e.g. following poisoning guidelines.

Follow-up contact post intervention

In the analysis of the follow-up contact strategy, it is assumed that repeated attempts of pesticide self-poisoning among previous self-harmers can be prevented by offering them increased social and emotional support, i.e. offering assistance and companionship as well as counselling on alcohol and drugs, through a volunteer organisation such as the local branch of Befriender's Worldwide, Sumithrayo.

Mobile phone-based post intervention

In the mobile phoned-based intervention, it is likewise assumed that using mobile phones and daily texts to follow-up on patients who have previously self-harmed can prevent repeated episodes of self-harm.

The approaches to prevent mortality from pesticide self-poisoning are summarised in table 1.

Table 1: Description of interventions

| Preventive approach to reduce mortality from pesticide self-poisoning | Intervention | Description |
|---|--------------------------|---|
| Primary prevention | Safe storage | Provide farmers with lockable devices to safely store pesticides outside of households. |
| | Legislation | Ban all pesticide formulation(s) of WHO hazard class I and II (moderately hazardous) from production, import and use. |
| Tertiary prevention | Medical management | Improve medical management of pesticide self-poisoning cases by ensuring that hospitals have the essential equipment and drugs and that health personnel are properly trained |
| Post intervention | Follow-up | |
| | - Volunteer organisation | Prevent repetitious attempts of self-harm among previous self-harmers by offering them physical, social and emotional support from volunteers. |

| | | |
|--|----------------|--|
| | - Mobile phone | Prevent repetitious attempts of self-harm among previous self-harmers by offering them social contact through phone conversations and daily text messages. |
|--|----------------|--|

Economic evaluation of self-harm interventions

Outline of the economic evaluation

The economic framework for all the strategies is a cost-effectiveness analysis (CEA). A governmental perspective is adopted for the economic evaluations, i.e. only cost and outcomes that impacts on government as a third party funder are included while all costs and outcomes for patients are excluded. The comparator in all the analyses is status quo, i.e. it is assumed that no current practice, beyond present level of medical case management, is in place, and all costs and health outcomes associated with the implementation of the respective strategies are compared with the costs and health outcomes in the absence of all interventions.

In the economic evaluation of the safe storage intervention, a three year cost-effectiveness analysis is conducted corresponding to the follow-up period of the intervention. In the modelling of a full national roll-out of the respective interventions, the time horizon for tracking the associated costs and health outcomes is extended to a five year period.

All costs are expressed in US dollars (US\$) and measured in real prices for the reference year (2010) using the gross domestic product deflator. If this is not available, the consumer price index will be used. The discounting of costs and health outcomes is undertaken at the recommended real

rate of 3% to take into account the timing of costs and health outcomes of the intervention that does not occur in the present.²⁸⁻³⁰

All participants recruited in the RCT are included in the economic evaluation of the safe storage intervention. When determining the potential cost-effectiveness of the respective strategies on a national scale, data is extrapolated to the actual Sri Lankan population.

Estimating cost

In accordance with the study perspective, all direct costs related to the implementation of the strategies and to the health care system are included in the analysis. Direct costs are divided into non-health and health care costs. Non-health care costs relates to the costs associated with the implementation of the interventions while health care costs are the explicit expenses to the health sector of treating fatal and non-fatal cases of pesticide self-poisonings. The medical treatment intervention technically fall under the category of health care costs but are presented under direct non-health costs along with the other interventions.

All cost and cost offsets relevant to the study perspective are identified, quantified and ascribed a unit cost to estimate the economic burden of pesticide self-poisoning and the cost of implementing the strategies. The cost components for all interventions are divided into the following categories: capital costs, personnel costs, overhead, consumables, and transportation costs.

Unit costs and prices will be obtained from official statistics, providers, health facilities, the Medical Supply Division of the Ministry of Health and the Provincial Department of Health. If reliable data is not available, case regional estimates on unit costs will be obtained from the WHO-CHOICE database and through personal communication with researchers in the field. The wage rate per capita per day is derived from national wage rates.

Direct non-health costs

Safe storage intervention

Data from the safe storage project is used as basis for costing the intervention. All costs associated with the implementation, delivery and follow-up on use of the safe storage intervention are included. Research costs associated with the intervention are excluded from the analyses.

Primary data on resource utilisation directly associated with the implementation of the intervention, e.g. container manufacture, delivery, personnel time dedicated to distributing containers and training farmers how to use them, is available in the safe storage trial databases. Additional items and resource utilisation associated with the intervention will be identified and assessed by reviewing the safe storage protocols and through quantitative interviews with key informants from the project.

The cost of the intervention is calculated by multiplying the resource utilisation of the identified input parameters with the relevant unit costs or prices. Travel cost is estimated on the basis of average distance to the villages, frequency of visits and fuel prices. Annual recurrent costs of spare parts and maintenance of capital costs and the wastage rate of safe containers are assessed and included in the analysis.

Table 2 presents an overview of identified cost components and items that are included in the analyses.

Table 2: Costing the safe storage intervention

| Cost | Type of | Cost | Cost items | Cost unit |
|------|---------|------|------------|-----------|
|------|---------|------|------------|-----------|

| category | cost | components | | |
|----------|-------------|---------------|---|--|
| Direct | Health care | Capital costs | Vehicles IT equipment Storage containers, including padlock and three keys | Numbers of units purchased, unit price |
| | | Personnel | Distribution team Community mobilisation team Drivers Contract personnel Administrative personnel | Salaries, wage rates, man hours |
| | | Overheads | Rent: - Storage facilities - Office facilities Telephone and internet Gas, electricity and water Maintenance cost of equipment | Resource utilisation, unit price |

| | | | | |
|--|--|----------------|---|---|
| | | Consumables | Posters Information and invitation letters | Resource utilisation, unit price |
| | | Transportation | Renting vehicles Fuel | Resource utilisation, unit price |

Legislative strategy

It is anticipated that the input parameters for this strategy will primarily include resource utilisation in the design phase, i.e. research, information gathering and consensus building, and the implementation phase. It is furthermore assumed that the Department of Agriculture is financing the majority of the expenses of implementing this strategy. Relevant cost items pertain to the running of the Pesticide Technical Advisory Committee, creating guidelines for use of pesticides to replace the Class II pesticides, implementation, campaigning and the enforcement of the new policy. The specific cost items and resource utilisation associated with the strategy are identified and assessed using the literature and through quantitative interviews with key informants from the Office of the Registrar of Pesticides, the Department of Agriculture, and the Institute of Policy Studies. Additional cost of the legislation beyond the design phase, implementation and enforcement of the policy are excluded. It is assumed that the pest control effectiveness of the substitute product equals that of the banned products, and that the substitution does not have any negative impact on yields.

The cost of the intervention will be calculated by multiplying resource use of the identified parameters with the unit cost or prices.

Medical management

Cost items and resource use directly associated with the medical management strategy, e.g. additional health personnel, ventilators and ambulances needed and time spent training new personnel, are identified and assessed using quantitative interviews with key informants, e.g. health and administrative personnel at hospitals. The interviews focus on resource utilisation of equipment and medical supplies as well as personnel time (see table 3 for preliminary input parameters). Additional equipment needs required beyond ventilators and laboratory equipment to establish intensive care unit (ICU) level support is likewise assessed.

Table 3: Costing the medical management strategy

| Cost category | Type of cost | Cost components | Cost items | Cost unit |
|---------------|--------------|-----------------|--|--|
| Direct | Health care | Capital costs | Ventilators Laboratory facilities Ambulances | Numbers of units purchased, unit price |
| | | Personnel | Additional health personnel needed in facilities at each level Additional drivers Administrative personnel | Salaries, wage rates, man hours |

| | | | | |
|--|--|----------------|--|----------------------------------|
| | | Overheads | Maintenance cost of equipment | Resource utilisation, unit price |
| | | Consumables | Drugs Materials and supplies Laboratory tests and examinations | |
| | | Transportation | Fuel | Resource utilisation, unit price |

The cost of the intervention is calculated by multiplying the resource utilisation of the identified input parameters with the relevant unit cost or price. Transfer cost is estimated on the basis of average distance travelled, frequency of transfers and fuel prices. Annual recurrent costs of spare parts and maintenance of capital costs is estimated as 5% of the total capital cost. Wastage rates of supplies are assessed and included in the analysis.

Follow-up contact

Cost items and resource utilisation associated with the follow-up intervention are identified and assessed using quantitative interviews with key informants from the Sri Lankan branch of Befriender’s Worldwide, Sumithrayo. The preliminary input parameters included in the analysis are presented in table 4.

Table 4: Costing the follow-up intervention

| Cost category | Type of cost | Cost components | Cost items | Cost unit |
|---------------|-----------------|-----------------|--|--|
| Direct | Non-health care | Capital costs | Vehicles IT equipment | Numbers of units purchased, unit price |
| | | Personnel | Administrative personnel Volunteers Supervision | Salaries, wage rates, man hours |
| | | Overheads | Telephone and internet Maintenance costs of | Resource utilisation, unit price |
| | | | Equipment | |
| | | Consumables | Training material Office supplies | Resource utilisation, unit price |
| | | Transportation | Fuel | Resource utilisation, unit price |

The cost of the intervention is calculated by multiplying resource use of identified parameters with the unit cost or prices. Transportation costs are assessed on the basis of fuel costs, average distance

travelled and frequency of follow-up visit. Annual recurrent costs of spare parts and maintenance are calculated as described in previous sections.

Mobile phone contact

Table 5 presents an overview of input parameters included in the mobile phone intervention. Additional cost items and resource utilisation associated with the intervention will be identified and assessed using existing databases and through quantitative interviews with researchers within the field.

Table 5: Costing the mobile phone intervention

| Cost category | Type of cost | Cost components | Cost items | Cost unit |
|---------------|-----------------|-----------------|--|--|
| Direct | Non-health care | Capital costs | IT equipment Mobile phones | Numbers of units purchased, unit price |
| | | Personnel | Administrative personnel Health personnel | Salaries, wage rates, man hours |
| | | Overheads | Telephone and internet | Resource utilisation, unit price |
| | | Consumables | Office supplies | Resource utilisation, |

| | | | | |
|--|--|--|--------------------|------------|
| | | | Training materials | unit price |
|--|--|--|--------------------|------------|

The cost of the intervention is calculated by multiplying resource use of identified parameters with the unit cost or prices.

Direct health care costs

Costs to the health sector can be divided into hospital treatment (in- and outpatient), outpatient health care, and transportation to and from hospital.³¹

The cost of direct health care is calculated by identifying resource use of relevant health care input parameters, e.g. the number of hospital inpatient and outpatient admissions, as well as the average length-of-stay in hospital; use of drugs and laboratory tests; number of examinations; number of transfers and distance travelled, and multiplying them with the relevant health care unit prices. The average length-of-stay at hospital and average cost per day of pesticide self-poisoned patient is estimated using hospital data. The allocation of joint costs for wards, e.g. administration/support service cost, rental cost of premises and overheads, is based on number of pesticide self-poisoning patients.

In a previous study from Sri Lanka, the direct cost to the Sri Lankan Ministry of Health of treating self-poisoned patients in a single district in 2005/2006 were estimated.²³ This database is consulted to identify cost items and resource utilisation. Additional data and relevant input parameters are obtained from hospital data systems and facility registries and through quantitative interviews with relevant hospital personnel.

Table 6 presents a brief overview of the cost components and items included in the costing of the direct health care costs of treating pesticide self-poisoning cases.

Table 6: Health care costs

| Cost category | Type of cost | Cost components | Cost item | Cost unit |
|---------------|--------------|-----------------|---|----------------------------------|
| Direct | Health care | Capital costs | Ventilators Laboratory facilities Ambulances Buildings | Resource utilisation, unit price |
| | | Personnel | Health personnel Non-medical personnel, incl. drivers and administrative personnel | Salaries, wage rates, man hours |
| | | Overheads | Maintenance cost of equipment Electricity, gas, and water | Resource utilisation, unit price |
| | | Consumables | Drugs Materials and supplies Laboratory tests and examinations | Resource utilisation, unit price |

| | | | | |
|--|--|-----------|------|--|
| | | Transport | Fuel | Resource utilisation, unit price |
|--|--|-----------|------|--|

Data collection of fatal and non-fatal pesticide self-poisoning cases

Data on fatal and non-fatal cases of pesticide self-poisoning are currently being collected by the safe storage team from death registries, mortuary and hospital records, hospital admission and emergency department's registries as well as police records.

Estimating health outcomes

The primary analysis of the safe storage intervention follows the intention-to-treat principle, comparing the observed incidence of pesticide self-poisoning between individuals in villages allocated to the intervention, and individuals in villages allocated to the control arm. As described in Pearson et al. (2011), a Poisson regression model is employed in the analysis, with the standard errors inflated to accommodate the clustered design. The analysis is adjusted for minimisation variables used in the random allocation and for seasonal variation in the incidence of pesticide self-poisoning. This same approach is used for the secondary outcome measures.²⁶

In the safe storage intervention, the primary outcome is the incidence of pesticide self-poisoning, both fatal and non-fatal, amongst villagers aged 14 years or older, while secondary outcomes include incidence of pesticide poisoning in general, self-harm, self-poisoning (all substances) and pesticide poisoning in children (younger than 14 years).²⁶ Effectiveness data for the safe storage project is used to estimate the denominator of the economic evaluation ratio, i.e. number of fatal

pesticide self-poisoning cases prevented, number of pesticide self-poisoning deaths prevented and life-years saved due to the intervention.

The analyses of the potential strategies are likewise carried out according to the intention-to-treat principle. However, the possibility of conducting a full economic evaluation of the legislative, medical management or follow-up is severely restrained by the limited data available on the effectiveness of such strategies. Threshold analyses are employed to model the potential for cost-effectiveness by ranging the effectiveness of each analysis in reducing death by pesticide self-poisoning from 1% to 100%.

Assessing cost-effectiveness

Incremental cost-effectiveness ratios (ICERs) are calculated to estimate the cost-effectiveness of the safe storage intervention and the potential for cost-effectiveness for the alternative strategies compared to status quo. ICERs are calculated as the ratio of the incremental difference in total costs between the intervention group and the control group (ΔC) is divided by the difference in effects (ΔE):

$$CER = \frac{\Delta C}{\Delta E} = \frac{C_1 - C_0}{E_1 - E_0}$$

The primary outcome of the cost-effectiveness analyses is cost per life year saved (LYS)

Uncertainty and sensitivity analysis

One-way sensitivity analyses are undertaken to assess how parameter uncertainties impacts on the cost-effectiveness of the strategies, thereby identifying the factors affecting the total cost of implementing the strategy. This involves varying individual input parameters' value across a range

of 10-100% and assessing how this changes the analysis' results.²⁸ Multivariate sensitivity analyses are also performed to assess how simultaneous changes of several variables affect the cost-effectiveness ratio. Probabilistic uncertainty analyses are performed to explore the impact of variability in (1) input parameters that can be measured, and (2) input parameters for which there is an underlying probability distribution.

To investigate discounting scenarios other than the 3% rate, sensitivity analyses are run with 0 and 6 per cent discount rates.³⁰

ETHICS AND DISSEMINATION

Ethical approval was granted for the safe storage project from the University of Peradeniya, Sri Lanka in March 2008, with additional approval of two amendments in January and July, respectively, of 2011. An amendment for the present study was granted from Rajarata University of Sri Lanka in November of 2013.

The results of the study will be disseminated to stakeholders in local and national government in Sri Lanka as well as the wider academic audience and medical communities through peer-reviewed publications and international conferences.

DISCUSSION

The present paper outlines the economic evaluation of a pesticide safe storage intervention and four potential strategies aimed at reducing mortality of pesticide self-poisoning in Sri Lanka. The study aims to study the cost-effectiveness of implementing such strategies to aid decision- and policy-makers in making well-informed policy decisions to prevent death from pesticide self-poisoning.

To the best of our knowledge this will be among the first economic evaluations undertaken for strategies aimed at reducing the mortality of pesticide self-poisoning. As such, this study will contribute positively to the evidence base of an erstwhile under-researched topic.

The strength of the study lies in its large sample size and the randomised design of the safe storage trial. Data on pesticide self-poisoning cases are currently being collected by the safe storage team, thereby ensuring that primary data sources are employed in the study.

There are several limitations of this study. The chosen analysis and outcome measure, cost per LYS, only focus on mortality, excluding morbidity or quality of life aspects. This focus limits the possibility of comparing the outcome of suicide prevention, i.e. a strategy that targets a fatal condition, with interventions targeting chronic conditions such as diabetes. The choice of a governmental perspective will likely affect the cost-effective ratio of the interventions as it excludes the cost of lost productivity. According to the WHO, suicide is the second leading cause of mortality among 10-24 year olds which means that society experience a huge productivity loss due to their premature deaths.³² A study by Choi et al. (2012) found that the total societal cost of occupational and deliberate pesticide poisoning in South Korea was US\$ 150 million in 2009, and that 90.6% of these costs were attributed to lost productivity.³³

It is not possible to include all the “spill-over effects”, i.e. unexpected effects, which will occur as a result of the interventions and spill over to other sectors and society. It is furthermore impossible to include every single cost and health effects of the strategy, and in the analyses some items will have to be included or excluded for practical reasons. Further limitations involves the exclusion of the trade-off between agricultural benefits of pesticides and lives saved in the legislative strategy; all-of-life effects, i.e. unrelated on-going health care costs of people who are alive because of the

intervention; all costs to the private sector due to changes in pesticide regulation; other non-health sector impacts; and the general cost of educating and training health professionals in Sri Lanka.

Finally, the analyses of the potential strategies are reduced to modelling and threshold analyses due to the severely limited data available on the effectiveness of such strategies. However, the information that these analyses will yield can be used by decision-makers to evaluate the risk of implementing suicide interventions by giving them the tools to determine whether or not the potential gains of the interventions justifies the investments.

There is a great need for more economic evaluations of suicide prevention strategies globally, but especially for low-income countries in the South East Asian region, to guide decision- and policy-makers to implement such strategies as well as prioritising which strategies should be allocated scarce resources.

ACKNOWLEDGEMENT

We thank Mala Ranawake for advice and support, Lal Muttuwatte for creating the map of the study area, the staff at South Asian Clinical Toxicology Research Collaboration for administrative support, and the safe storage fieldwork team leaders Manjula Weerasinghe, Chamil Priyadarshana and Ravi Pieris for technical advice and support.

AUTHORS' CONTRIBUTIONS

LBM and FK conceived the concept and rationale of the study. LBM, ME, KSH, MP, SA, SJ and FK contributed to design of study. LBM drafted the first version of the manuscript. All authors contributed to, read and approved the final manuscript.

FUNDING

LBM is funded by a PhD scholarship from the Faculty of Health and Medical Sciences, University of Copenhagen, Denmark. The safe storage trial is granted by the Wellcome Trust (GR090958). Field level costs of the study are supported by this grant.

COMPETING INTERESTS

None.

REFERENCES

1 World Health Organization. *Global Health Estimates 2014 Summary Tables: Deaths by cause, age and sex, 2000-2012*. 2014.

2 http://www.who.int/entity/healthinfo/global_burden_disease/GHE_DthGlobal_2000_2012.xls?ua=1 (accessed on 17 Nov. 2014).

3 Murray CJ, Vos T, Lozano R, *et al*. Disability-adjusted life years (DALYs) for 291 diseases and injuries in 21 regions, 1990-2010: a systematic analysis for the Global Burden of Disease Study 2010. *Lancet* 2012;380: 2197-2223.

4 World Health Organization, International Association for Suicide Prevention. *Safer access to pesticides: community interventions*. Geneva: World health Organization, 2006.

5 Gunnell D, Eddleston M, Phillips MR, *et al*. The global distribution of fatal pesticide self-poisoning: systematic review. *BMC Public Health* 2007;7: 357.

6 Patel V, Ramasundarahettige C, Vijayakumar L, *et al*. Suicide mortality in India: a nationally representative survey. *Lancet* 2012;379: 2343-2351.

- 1
2
3
4 6 Yang GH, Phillips MR, Zhou MG, *et al.* Understanding the unique characteristics of suicide
5 in China: national psychological autopsy study. *Biomed Environ Sci* 2005;18: 379-389.
6
7
8
9
10 7 Gunnell D, Fernando R, Hewagama M, *et al.* The impact of pesticide regulations on suicide in
11 Sri Lanka. *Int J Epidemiol* 2007;36: 1235-1242.
12
13
14
15 8 van der Hoek W, Konradsen F. Analysis of 8000 hospital admissions for acute poisoning in a
16 rural area of Sri Lanka. *Clin Toxicol (Phila)* 2006;44: 225-231.
17
18
19
20 9 Sri Lanka Police Services. *Modes of suicides 2011*. 2013.
21
22 http://www.police.lk/images/others/crime_trends/2011/mode_suicides_%202011.pdf
23
24 (accessed on 9 July 2013).
25
26
27
28 10 Bertolote JM, Fleischmann A, Eddleston M, *et al.* Deaths from pesticide poisoning: a global
29 response. *Br J Psychiatry* 2006;189: 201-203.
30
31
32
33 11 Jensen HK, Konradsen F, Jors E, *et al.* Pesticide Use and Self-Reported Symptoms of Acute
34 Pesticide Poisoning among Aquatic Farmers in Phnom Penh, Cambodia. *J Toxicol* 2011;2011:
35 639814.
36
37
38
39 12 Gunnell D, Eddleston M. Suicide by intentional ingestion of pesticides: a continuing tragedy
40 in developing countries. *Int J Epidemiol* 2003;32: 902-909.
41
42
43
44 13 Konradsen F, van der Hoek W, Cole DC, *et al.* Reducing acute poisoning in developing
45 countries--options for restricting the availability of pesticides. *Toxicology* 2003;192: 249-261.
46
47
48
49 14 Mann JJ, Apter A, Bertolote J, *et al.* Suicide prevention strategies: a systematic review. *JAMA*
50 2005;294: 2064-2074.
51
52
53
54
55
56
57
58
59
60

15 Hawton K. Restricting access to methods of suicide: Rationale and Evaluation of this approach to suicide prevention. *Crisis: The Journal of Crisis Intervention and Suicide Prevention* 2007;28: 4-9.

16 Pearson M, Anthony ZB, Buckley NA. Prospective policy analysis: how an epistemic community informed policymaking on intentional self poisoning in Sri Lanka. *Health Res Policy Syst* 2010;8: 19.

17 Eddleston M, Buckley NA, Gunnell D, *et al.* Identification of strategies to prevent death after pesticide self-poisoning using a Haddon matrix. *Inj Prev* 2006;12: 333-337.

18 World Health Organization. *World Suicide Prevention Day 2009*. 2009.
http://www.who.int/mental_health/prevention/suicide/wspd_2009_statement.pdf (accessed on 21 Jan. 2012).

19 World Health Organization. *Clinical Management of Acute Pesticide Intoxication: Prevention of Suicidal Behaviours*. Geneva: World Health Organization, 2008.

20 Phillips MR, Yang G, Zhang Y, *et al.* Risk factors for suicide in China: a national case-control psychological autopsy study. *Lancet* 2002;360: 1728-1736.

21 Vijayakumar L, Pirkis J, Whiteford H. Suicide in developing countries (3): prevention efforts. *Crisis* 2005;26: 120-124.

22 Vijayakumar L, John S, Pirkis J, *et al.* Suicide in developing countries (2): risk factors. *Crisis* 2005;26: 112-119.

- 1
2
3
4 23 Wickramasinghe K, Steele P, Dawson A, *et al.* Cost to government health-care services of
5 treating acute self-poisonings in a rural district in Sri Lanka. *Bull World Health Organ*
6 2009;87: 180-185.
7
8
9
10
11 24 Platt, S, McLean, J, McCollam, A, Blamey, A, Mackenzie, M, McDaid, D, Maxwell, M,
12 Halliday, E, Woodhouse, A. *Evaluation of the first phase of Choose Life: The national*
13 *strategy and action plan to prevent suicide in Scotland.* Edinburgh: Scottish Executive Social
14 Research, 2006.
15
16
17
18
19
20
21 25 Kennelly B. The economic cost of suicide in Ireland. *Crisis* 2007;28: 89-94.
22
23
24
25 26 Pearson M, Konradsen F, Gunnell D, *et al.* A community-based cluster randomised trial of
26 safe storage to reduce pesticide self-poisoning in rural Sri Lanka: study protocol. *BMC Public*
27 *Health* 2011;11: 879.
28
29
30
31
32 27 Food and Agriculture Organization. *Proceedings of the Asia regional workshop on the*
33 *implementation, monitoring and observance of the international code of conduct on the*
34 *distribution and use of pesticides.* Dhaka: FAO, 2005.
35
36
37
38
39
40 28 Drummond MF, Sculpher MJ, Torrance GW, *et al.* *Methods for the Economic Evaluation of*
41 *Health Care Programmes.* 3rd edn. New York: Oxford University Press, 2005.
42
43
44
45 29 Gold MR, Siegel JE, Russel L, *et al.* *Cost-Effectiveness in Health and Medicine.* New York:
46 Oxford University Press, 1996.
47
48
49
50
51 30 Tan-Torres Edejer T, Baltussen R, Adam T, *et al.* *Making choices in health: WHO guide to*
52 *cost-effectiveness analysis.* Geneva: World Health Organization, 2003.
53
54
55
56
57
58
59
60

31 World Health Organization. *Methodological approaches for cost-effectiveness and cost-utility analysis of injury prevention measures*. Copenhagen: World Health Organization, 2011.

32 World Health Organization. *Suicide data*. 2014.

http://www.who.int/mental_health/prevention/suicide/suicideprevent/en/ (accessed on 17 Nov. 2014).

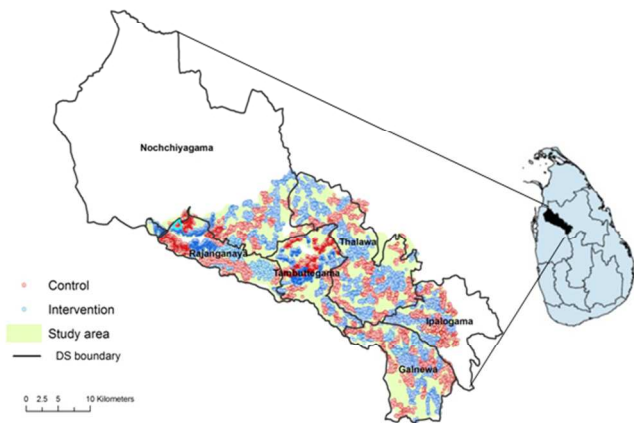
33 Choi Y, Kim Y, Ko Y, *et al*. Economic burden of acute pesticide poisoning in South Korea. *Trop Med Int Health* 2012;17: 1534-43.

Figure legend

Figure 1 Distribution of study areas in the Anuradhapura District of Sri Lanka (Map of Sri Lanka adapted from ²⁶)

DS: Divisional secretariat

For peer review only



Distribution of study areas in the Anuradhapura District of Sri Lanka (Map of Sri Lanka adapted from [26])
254x190mm (96 x 96 DPI)

BMJ Open

Cost-effectiveness analyses of self-harm strategies aimed at reducing the mortality of pesticide self-poisonings in Sri Lanka: A study protocol

| | |
|---------------------------------|--|
| Journal: | BMJ Open |
| Manuscript ID: | bmjopen-2014-007333.R1 |
| Article Type: | Protocol |
| Date Submitted by the Author: | 27-Jan-2015 |
| Complete List of Authors: | Madsen, Lizell; University of Copenhagen, Department of International Health, Immunology and Microbiology Eddleston, Michael; Pharmacology, Toxicology & Therapeutics, University of Edinburgh; University of Copenhagen, Department of International Health, Immunology and Microbiology Hansen, Kristian; London School of Hygiene and Tropical Medicine, Department of Global Health and Development Pearson, Melissa; Pharmacology, Toxicology & Therapeutics, University of Edinburgh Agampodi, Suneth; Rajarata University, Department of Community Medicine Jayamanne, Shaluka; University of Peradeniya, South Asian Clinical Toxicology Research Collaboration; University of Kelaniya, Department of Medicine Konradsen, Flemming; University of Copenhagen, Department of International Health, Immunology and Microbiology; University of Peradeniya, South Asian Clinical Toxicology Research Collaboration |
| Primary Subject Heading: | Global health |
| Secondary Subject Heading: | Health economics |
| Keywords: | HEALTH ECONOMICS, Suicide & self-harm < PSYCHIATRY, PUBLIC HEALTH |
| | |

SCHOLARONE™
Manuscripts

Cost-effectiveness analyses of self-harm strategies aimed at reducing the mortality of pesticide self-poisonings in Sri Lanka: A study protocol

Lizell Bustamante Madsen¹, Michael Eddleston^{1,2,3}, Kristian Schultz Hansen⁴, Melissa Pearson^{2,3}, Suneth Agampodi⁵, Shaluka Jayamanne^{3,6} and Flemming Konradsen^{1,3}

¹ Department of International Health, Immunology and Microbiology, Faculty of Health Sciences, University of Copenhagen, Copenhagen, Denmark.

² Pharmacology, Toxicology & Therapeutics, University/BHF Centre for Cardiovascular Science, University of Edinburgh, Edinburgh, UK.

³ South Asian Clinical Toxicology Research Collaboration, Faculty of Medicine, University of Peradeniya, Peradeniya, Sri Lanka.

⁴ Department of Global Health and Development, London School of Hygiene and Tropical Medicine, London, UK.

⁵ Department of Community Medicine, Faculty of Medicine and Allied Sciences, Rajarata University, Saliyapura, Sri Lanka.

⁶ Department of Medicine, Faculty of Medicine, University of Kelaniya, Ragama, Sri Lanka.

Reprints or correspondence:

Lizell B Madsen, Department of International Health, Immunology and Microbiology, Faculty of Health Sciences, University of Copenhagen, Oester Farimagsgade 5, PO BOX 2099, DK-1014 Copenhagen K, Denmark. Tel: +45 35 32 71 26, Fax: +45 35 32 77 36, E-mail (can be published): lizell@sund.ku.dk

Keywords: Cost-effectiveness analysis, self-harm, suicide, intervention, Sri Lanka

Word count (from Introduction to end of Discussion): 3,915, 1 figure, 6 tables.

ABSTRACT

Introduction

An estimated 803,900 people worldwide died as a result of self-harm in 2012. The deliberate ingestion of pesticides has been identified as the method most frequently used to commit fatal self-harm globally. In Sri Lanka it is estimated that up to 60% of all suicides are committed using this method. The aim of the present study is to assess the cost-effectiveness of an on-going safe storage intervention currently taking place in a rural Sri Lankan district and to model the cost-effectiveness of implementing the safe storage intervention as well as four potential interventions (legislative, medical management, follow-up contact and mobile phone contact) on a national level.

Methods and analysis

Study design for all the strategies is a cost-effectiveness analysis. A governmental perspective is adopted. The time horizon for tracking the associated costs and health outcomes of the safe storage intervention on district level runs over three years. The time horizon is extended to five years when modelling a full national roll-out of the respective interventions. The discounting of costs and health outcomes are undertaken at the recommended real rate of 3%. Threshold analyses of the modelled strategies are employed to assess the strategies potential for cost-effectiveness, running scenarios with health outcome improvements ranging from 1% to 100%. Sensitivity analyses are also performed. The main outcome measures of the safe storage intervention are incremental cost-effectiveness ratios.

Ethics and dissemination

Ethical approval was granted for the safe storage project from the University of Peradeniya,

Sri Lanka in March of 2008. An amendment for the present study was granted from Rajarata University of Sri Lanka in November of 2013. Findings will be disseminated to public and private stakeholders in local and national government in Sri Lanka as well as the wider academic audience through peer-reviewed publications and international conferences.

Trial registration number

The safe storage cluster trial is registered with the Clinical Trials, ref: NCT1146496 (<http://clinicaltrialsfeeds.org/clinical-trials/show/NCT1146496>).

STRENGTHS AND LIMITATIONS OF THE STUDY

- The study will generate new knowledge to an under-researched topic, i.e. the cost-effectiveness of interventions aimed at reducing the mortality of pesticide self-poisoning.
- The strength of the study lies in the randomised design of the safe storage trial and the large sample size which allows sufficient power to assess the intervention's effect on self-harm.
- The chosen type of analysis and outcome measure narrows the field of comparisons with other types of interventions.
- Analyses of potential preventive strategies aimed at reducing the mortality of pesticide self-poisoning are reduced to modelling and threshold analyses due to the limited data available.

INTRODUCTION

The World Health Organization (WHO) has estimated that 803,900 people worldwide died as a result of self-harm in 2012.¹ In the 2010 Global Burden of Disease Study, self-harm was identified as the second most important type of injury reported and it was among the 25 leading causes of disease burden.²

The WHO has recognised deliberate ingestion of pesticides as the most frequently used method of self-harm globally.³ In a systematic review from 2007, it was estimated that pesticide self-poisoning was responsible for as much as one third of all suicides globally.⁴ In China it is estimated that as much as 58% of all suicides are due to deliberate pesticide ingestion, while Patel et al. recently found that the method was employed in approximately half of all suicides in India.^{5,6}

In 1995, Sri Lanka had one of the highest suicide rates in the world with approximately 47 suicides per 100,000 population.⁷ The country has had great success in reducing the suicide incidence rates through bans of the most toxic pesticides, and in 2005 suicide rates had fallen to 24 per 100,000.⁷ A retrospective study of in-patient records in southern rural Sri Lanka from 1990 to 2002 found that 61% of all acute poisoning cases admitted to hospital were due to pesticide ingestion.⁸ Police records for 2011 showed that 46% of all suicides registered were due to the ingestion of pesticides and insecticides.⁹ Suicide by deliberate ingestion of pesticides therefore continues to be a major public health issue in Sri Lanka as an important cause of premature mortality.

It is hypothesised that pesticide ingestion contributes so heavily to the patterns of suicide in low-income countries because of the easy accessibility to pesticides in farming households and in nearby

shops as well as the high overall case fatality, which ranges from less than 5% to 70%, depending on the pesticides used.^{4,10-12} Yang et al. (2005) found that 61% of all fatal pesticide self-poisoning cases in China was due to unsuccessful medical resuscitation.⁶

There is an urgent need for strategies aimed at preventing deaths from pesticide self-poisoning in Sri Lanka, as well as the rest of the region.^{4,13} A self-harm prevention strategy that has been suggested in the literature is the restriction of access to means.^{14,15} With regards to self-harm using pesticides, it has been recommended by the WHO, and in the literature to restrict the availability of highly toxic pesticides, e.g. by banning the production, import and use of a pesticides, or to restrict access to pesticides by keeping them in locked containers, and reduce the use of pesticides in agricultural practices.^{12,13,16-18} A suggested treatment strategy involves improvement of the medical management of the poisoning cases by ensuring that hospitals have adequate supplies of antidotes, respirators and trained personnel.^{12,17,19} Finally, previous attempts at self-harm is a risk factor for repetition, and findings suggest that post interventions focusing on follow-up contact with people, who have previously attempted self-harm could reduce suicide rates.^{14,20-22}

For decision-makers to determine which health related interventions to implement in their country several factors must be taken into consideration, including public health and economic considerations. The direct and indirect economic costs of self-harm and suicide include emergency services and intensive hospital care as well as costs of lost productivity. A study from Sri Lanka estimated the total direct cost to the Ministry of Health of treating self-poisoned patients to be US\$ 1,072,571. Studies from Scotland and Ireland estimated the cost per suicide to society to be US\$ 3,067,463 and US\$ 2,066,886, respectively (inflationary adjustments have been made to bring all costs to year 2013).²³⁻²⁵ The pain and grief that family members and friends suffer can also be

immense and affect their ability to function in society.¹² The extensive costs of pesticide self-poisonings to families, society and the general economy therefore suggest a strong economic incentive for investment in self-harm interventions.

Presently very little evidence exists on the cost-effectiveness of interventions aimed at reducing the mortality from pesticide self-poisoning which could be used to prioritise their introduction. The overall aim of the study is to address this evidence gap by (1) assessing the cost-effectiveness of an on-going safe storage intervention currently taking place in rural Sri Lanka; (2) assessing the cost-effectiveness of implementing the safe storage intervention on a national level, and (3) modelling the cost-effectiveness of implementing four potential interventions (legislative, medical management, follow-up contact (physical contact through a volunteer organisation and mobile phone contact)) on a national level. In the following, the outline of the economic evaluation of all interventions is presented.

METHODS AND ANALYSIS

Overview of the strategies

Safe storage intervention

The focus of the research is an on-going community-based, cluster randomised controlled trial (RCT) which is presently being conducted in the Anuradhapura district of Sri Lanka’s North Central Province. The aim of the RCT is to evaluate the effectiveness of storing pesticides in specially designed lockable containers in reducing the mortality of pesticide self-poisoning as well as the overall incidence of self-harm, and mortality following self-harm.²⁶ Access to pesticides is

restricted by storing them in lockable containers which are then partially buried underground outside the house. The full details on the design and methods employed in the RCT are provided elsewhere (see reference 26 for details). The trial is registered on Clinical Trials, ref: NCT1146496 (<http://clinicaltrialsfeeds.org/clinical-trials/show/NCT1146496>).

Study sample and sample size calculation

The trial has recruited 53,471 households from a total of 180 clusters since 31 December 2010 from the Mahaweli H region in the North Central Province in Sri Lanka, including the divisional secretariats of Thambuthegama, Talawa, Galnewa, Rajanganaya, Nochchiyagama and Ipologama (see figure 1). The randomisation unit was the clusters, primarily villages, which were allocated to either the intervention or control group.²⁶

All households in the study area were approached, briefly introduced to the trial and then they were invited to give verbal consent to participation. Inclusion criteria were households with a resident farmer, or reported use of pesticides or storage of these. Exclusion criteria included villages that had been recruited to previous pilot studies of pesticide safe storage, and households without an adult available to provide consent.²⁶

Under the assumptions that 20% of individuals in the intervention arm lived in households not using a lockable container, and 5% of individuals in the control arm lived in a household using one, it was estimated that 223,925 person years of follow-up were required in each arm to detect a 30% reduction in pesticide self-poisoning with 80% power at the 5 % significance level.

Legislation

In 1995, the Sri Lankan government implemented a national policy banning all pesticide formulations of WHO hazard class Ia/Ib.²⁷ In the legislative strategy, it is assumed that all pesticide formulation(s) of WHO hazard class I and II (moderately hazardous) are banned from production, import and use, and another product is recommend by the Department of Agriculture to substitute these products. The costs of implementing and enforcing a policy banning all class I and II pesticide formulations used for the most commonly grown crops and vegetable products are assessed.

Medical management

In the treatment strategy, it is assumed that case management of pesticide self-poisoning can be improved by ensuring that peripheral hospital facilities have adequate supplies of drugs, including antidotes, ventilators, lab facilities and other necessary equipment to treat and transfer patients. In the analyses, it is determined what such essential packages should entail and how many of these are needed in the hospital facilities at each level. The strategy also includes targeted training of health personnel in pesticide poisoning case management, e.g. following poisoning guidelines.

Follow-up contact post intervention

In the analysis of the follow-up contact strategy, it is assumed that repeated attempts of pesticide self-poisoning among previous self-harmers can be prevented by offering them increased social and emotional support, i.e. offering assistance and companionship as well as counselling on alcohol and drugs, through a volunteer organisation such as the local branch of Befriender's Worldwide, Sumithrayo.

Mobile phone-based post intervention

In the mobile phoned-based intervention, it is likewise assumed that using mobile phones and daily texts to follow-up on patients who have previously self-harmed can prevent repeated episodes of self-harm.

The approaches to prevent mortality from pesticide self-poisoning are summarised in table 1.

Table 1: Description of interventions

| Preventive approach to reduce mortality from pesticide self-poisoning | Intervention | Description |
|---|--------------------|---|
| Primary prevention | Safe storage | Provide farmers with lockable devices to safely store pesticides outside of households. |
| | Legislation | Ban all pesticide formulation(s) of WHO hazard class I and II (moderately hazardous) from production, import and use. |
| Tertiary prevention | Medical management | Improve medical management of pesticide self-poisoning cases by ensuring that hospitals have the essential equipment and drugs and that health personnel are properly trained |

| | | |
|-------------------|--------------------------|--|
| Post intervention | Follow-up | |
| | - Volunteer organisation | Prevent repetitious attempts of self-harm among previous self-harmers by offering them physical, social and emotional support from volunteers. |
| | - Mobile phone | Prevent repetitious attempts of self-harm among previous self-harmers by offering them social contact through phone conversations and daily text messages. |

Economic evaluation of self-harm interventions

Outline of the economic evaluation

The economic framework for all the strategies is a cost-effectiveness analysis (CEA). A governmental perspective is adopted for the economic evaluations, i.e. only cost and outcomes that impacts on government as a third party funder are included while all costs and outcomes for patients are excluded. The comparator in all the analyses is status quo, i.e. it is assumed that no current practice, beyond present level of medical case management, is in place, and all costs and health outcomes associated with the implementation of the respective strategies are compared with the costs and health outcomes in the absence of all interventions.

1
2
3
4 In the economic evaluation of the safe storage intervention, a three year cost-effectiveness analysis
5
6 is conducted corresponding to the follow-up period of the intervention. In the modelling of a full
7
8 national roll-out of the respective interventions, the time horizon for tracking the associated costs
9
10 and health outcomes is extended to a five year period.
11
12

13
14
15 All costs are expressed in US dollars (US\$) and measured in real prices for the reference year
16
17 (2010) using the gross domestic product deflator. If this is not available, the consumer price index
18
19 will be used. The discounting of costs and health outcomes is undertaken at the recommended real
20
21 rate of 3% to take into account the timing of costs and health outcomes of the intervention that does
22
23 not occur in the present.²⁸⁻³⁰
24
25
26
27

28
29 All participants recruited in the RCT are included in the economic evaluation of the safe storage
30
31 intervention. When determining the potential cost-effectiveness of the respective strategies on a
32
33 national scale, data is extrapolated to the actual Sri Lankan population.
34
35

36 37 Estimating cost

38
39 In accordance with the study perspective, all direct costs related to the implementation of the
40
41 strategies and to the health care system are included in the analysis. Direct costs are divided into
42
43 non-health and health care costs. Non-health care costs relates to the costs associated with the
44
45 implementation of the interventions while health care costs are the explicit expenses to the health
46
47 sector of treating fatal and non-fatal cases of pesticide self-poisonings. The medical treatment
48
49 intervention technically fall under the category of health care costs but are presented under direct
50
51 non-health costs along with the other interventions.
52
53
54
55
56
57
58
59
60

1
2
3
4
5
6
7
8
9
10
11
12
13
14
15
16
17
18
19
20
21
22
23
24
25
26
27
28
29
30
31
32
33
34
35
36
37
38
39
40
41
42
43
44
45
46
47
48
49
50
51
52
53
54
55
56
57
58
59
60

All cost and cost offsets relevant to the study perspective are identified, quantified and ascribed a unit cost to estimate the economic burden of pesticide self-poisoning and the cost of implementing the strategies. The cost components for all interventions are divided into the following categories: capital costs, personnel costs, overhead, consumables, and transportation costs.

Unit costs and prices will be obtained from official statistics, providers, health facilities, the Medical Supply Division of the Ministry of Health and the Provincial Department of Health. If reliable data is not available, case regional estimates on unit costs will be obtained from the WHO-CHOICE database and through personal communication with researchers in the field. The wage rate per capita per day is derived from national wage rates.

Direct non-health costs

Safe storage intervention

Data from the safe storage project is used as basis for costing the intervention. All costs associated with the implementation, delivery and follow-up on use of the safe storage intervention are included. Research costs associated with the intervention are excluded from the analyses.

Primary data on resource utilisation directly associated with the implementation of the intervention, e.g. container manufacture, delivery, personnel time dedicated to distributing containers and training farmers how to use them, is available in the safe storage trial databases. Additional items and resource utilisation associated with the intervention will be identified and assessed by reviewing the safe storage protocols and through quantitative interviews with key informants from the project.

The cost of the intervention is calculated by multiplying the resource utilisation of the identified input parameters with the relevant unit costs or prices. Travel cost is estimated on the basis of average distance to the villages, frequency of visits and fuel prices. Annual recurrent costs of spare parts and maintenance of capital costs and the wastage rate of safe containers are assessed and included in the analysis.

Table 2 presents an overview of identified cost components and items that are included in the analyses.

Table 2: Costing the safe storage intervention

| Cost category | Type of cost | Cost components | Cost items | Cost unit |
|---------------|--------------|-----------------|--|--|
| Direct | Health care | Capital costs | Vehicles IT equipment Storage containers, including padlock and three keys | Numbers of units purchased, unit price |
| | | Personnel | Distribution team Community mobilisation team | Salaries, wage rates, man hours |

| | | | | |
|--|--|----------------|---|---|
| | | | Drivers | |
| | | | Contract personnel | |
| | | | Administrative personnel | |
| | | Overheads | Rent: - Storage facilities - Office facilities Telephone and internet Gas, electricity and water Maintenance cost of equipment | Resource utilisation, unit price |
| | | Consumables | Posters Information and invitation letters | Resource utilisation, unit price |
| | | Transportation | Renting vehicles Fuel | Resource utilisation, unit price |

Legislative strategy

It is anticipated that the input parameters for this strategy will primarily include resource utilisation in the design phase, i.e. research, information gathering and consensus building, and the implementation phase. It is furthermore assumed that the Department of Agriculture is financing the

majority of the expenses of implementing this strategy. Relevant cost items pertain to the running of the Pesticide Technical Advisory Committee, creating guidelines for use of pesticides to replace the Class II pesticides, implementation, campaigning and the enforcement of the new policy. The specific cost items and resource utilisation associated with the strategy are identified and assessed using the literature and through quantitative interviews with key informants from the Office of the Registrar of Pesticides, the Department of Agriculture, and the Institute of Policy Studies. Additional cost of the legislation beyond the design phase, implementation and enforcement of the policy are excluded. It is assumed that the pest control effectiveness of the substitute product equals that of the banned products, and that the substitution does not have any negative impact on yields.

The cost of the intervention will be calculated by multiplying resource use of the identified parameters with the unit cost or prices.

Medical management

Cost items and resource use directly associated with the medical management strategy, e.g. additional health personnel, ventilators and ambulances needed and time spent training new personnel, are identified and assessed using quantitative interviews with key informants, e.g. health and administrative personnel at hospitals. The interviews focus on resource utilisation of equipment and medical supplies as well as personnel time (see table 3 for preliminary input parameters). Additional equipment needs required beyond ventilators and laboratory equipment to establish intensive care unit (ICU) level support is likewise assessed.

Table 3: Costing the medical management strategy

| Cost category | Type of cost | Cost components | Cost items | Cost unit |
|---------------|--------------|-----------------|--|--|
| Direct | Health care | Capital costs | Ventilators Laboratory facilities Ambulances | Numbers of units purchased, unit price |
| | | Personnel | Additional health personnel needed in facilities at each level Additional drivers Administrative personnel | Salaries, wage rates, man hours |
| | | Overheads | Maintenance cost of equipment | Resource utilisation, unit price |
| | | Consumables | Drugs Materials and supplies Laboratory tests and examinations | |
| | | Transportation | Fuel | Resource utilisation, |

| | | | | |
|--|--|--|--|------------|
| | | | | unit price |
|--|--|--|--|------------|

The cost of the intervention is calculated by multiplying the resource utilisation of the identified input parameters with the relevant unit cost or price. Transfer cost is estimated on the basis of average distance travelled, frequency of transfers and fuel prices. Annual recurrent costs of spare parts and maintenance of capital costs is estimated as 5% of the total capital cost. Wastage rates of supplies are assessed and included in the analysis.

Follow-up contact

Cost items and resource utilisation associated with the follow-up intervention are identified and assessed using quantitative interviews with key informants from the Sri Lankan branch of Befriender's Worldwide, Sumithrayo. The preliminary input parameters included in the analysis are presented in table 4.

Table 4: Costing the follow-up intervention

| Cost category | Type of cost | Cost components | Cost items | Cost unit |
|---------------|-----------------|-----------------|------------------------------|--|
| Direct | Non-health care | Capital costs | Vehicles IT equipment | Numbers of units purchased, unit price |

| | | | | |
|--|--|----------------|--|-------------------------------------|
| | | Personnel | Administrative personnel Volunteers Supervision | Salaries, wage rates, man hours |
| | | Overheads | Telephone and internet Maintenance costs of | Resource utilisation, unit price |
| | | | Equipment | |
| | | Consumables | Training material Office supplies | Resource utilisation, unit price |
| | | Transportation | Fuel | Resource utilisation, unit price |

The cost of the intervention is calculated by multiplying resource use of identified parameters with the unit cost or prices. Transportation costs are assessed on the basis of fuel costs, average distance travelled and frequency of follow-up visit. Annual recurrent costs of spare parts and maintenance are calculated as described in previous sections.

Mobile phone contact

Table 5 presents an overview of input parameters included in the mobile phone intervention. Additional cost items and resource utilisation associated with the intervention will be identified and

assessed using existing databases and through quantitative interviews with researchers within the field.

Table 5: Costing the mobile phone intervention

| Cost category | Type of cost | Cost components | Cost items | Cost unit |
|---------------|-----------------|-----------------|--|--|
| Direct | Non-health care | Capital costs | IT equipment Mobile phones | Numbers of units purchased, unit price |
| | | Personnel | Administrative personnel Health personnel | Salaries, wage rates, man hours |
| | | Overheads | Telephone and internet | Resource utilisation, unit price |
| | | Consumables | Office supplies Training materials | Resource utilisation, unit price |

The cost of the intervention is calculated by multiplying resource use of identified parameters with the unit cost or prices.

Direct health care costs

Costs to the health sector can be divided into hospital treatment (in- and outpatient), outpatient health care, and transportation to and from hospital.³¹

The cost of direct health care is calculated by identifying resource use of relevant health care input parameters, e.g. the number of hospital inpatient and outpatient admissions, as well as the average length-of-stay in hospital; use of drugs and laboratory tests; number of examinations; number of transfers and distance travelled, and multiplying them with the relevant health care unit prices. The average length-of-stay at hospital and average cost per day of pesticide self-poisoned patient is estimated using hospital data. The allocation of joint costs for wards, e.g. administration/support service cost, rental cost of premises and overheads, is based on number of pesticide self-poisoning patients.

In a previous study from Sri Lanka, the direct cost to the Sri Lankan Ministry of Health of treating self-poisoned patients in a single district in 2005/2006 were estimated.²³ This database is consulted to identify cost items and resource utilisation. Additional data and relevant input parameters are obtained from hospital data systems and facility registries and through quantitative interviews with relevant hospital personnel.

Table 6 presents a brief overview of the cost components and items included in the costing of the direct health care costs of treating pesticide self-poisoning cases.

Table 6: Health care costs

| Cost | Type of | Cost | Cost item | Cost unit |
|------|---------|------|-----------|-----------|
|------|---------|------|-----------|-----------|

| category | cost | components | | |
|----------|-------------|---------------|---|----------------------------------|
| Direct | Health care | Capital costs | Ventilators Laboratory facilities Ambulances Buildings | Resource utilisation, unit price |
| | | Personnel | Health personnel Non-medical personnel, incl. drivers and administrative personnel | Salaries, wage rates, man hours |
| | | Overheads | Maintenance cost of equipment Electricity, gas, and water | Resource utilisation, unit price |
| | | Consumables | Drugs Materials and supplies Laboratory tests and examinations | Resource utilisation, unit price |
| | | Transport | Fuel | Resource utilisation, unit |

| | | | | |
|--|--|--|--|-------|
| | | | | price |
|--|--|--|--|-------|

Data collection of fatal and non-fatal pesticide self-poisoning cases

Data on fatal and non-fatal cases of pesticide self-poisoning are currently being collected by the safe storage team from death registries, mortuary and hospital records, hospital admission and emergency department’s registries as well as police records.

Estimating health outcomes

The primary analysis of the safe storage intervention follows the intention-to-treat principle, comparing the observed incidence of pesticide self-poisoning between individuals in villages allocated to the intervention, and individuals in villages allocated to the control arm. As described in Pearson et al. (2011), a Poisson regression model is employed in the analysis, with the standard errors inflated to accommodate the clustered design. The analysis is adjusted for minimisation variables used in the random allocation and for seasonal variation in the incidence of pesticide self-poisoning. This same approach is used for the secondary outcome measures.²⁶

In the safe storage intervention, the primary outcome is the incidence of pesticide self-poisoning, both fatal and non-fatal, amongst villagers aged 14 years or older, while secondary outcomes include incidence of pesticide poisoning in general, self-harm, self-poisoning (all substances) and pesticide poisoning in children (younger than 14 years).²⁶ Effectiveness data for the safe storage project is used to estimate the denominator of the economic evaluation ratio, i.e. number of fatal pesticide self-poisoning cases prevented, number of pesticide self-poisoning deaths prevented and life-years saved due to the intervention.

The analyses of the potential strategies are likewise carried out according to the intention-to-treat principle. However, the possibility of conducting a full economic evaluation of the legislative, medical management or follow-up is severely restrained by the limited data available on the effectiveness of such strategies. Threshold analyses are employed to model the potential for cost-effectiveness by ranging the effectiveness of each analysis in reducing death by pesticide self-poisoning from 1% to 100%.

Assessing cost-effectiveness

Incremental cost-effectiveness ratios (ICERs) are calculated to estimate the cost-effectiveness of the safe storage intervention and the potential for cost-effectiveness for the alternative strategies compared to status quo. ICERs are calculated as the ratio of the incremental difference in total costs between the intervention group and the control group (ΔC) is divided by the difference in effects (ΔE):

$$CER = \frac{\Delta C}{\Delta E} = \frac{C_1 - C_0}{E_1 - E_0}$$

The primary outcome of the cost-effectiveness analyses is cost per life year saved (LYS)

Uncertainty and sensitivity analysis

One-way sensitivity analyses are undertaken to assess how parameter uncertainties impacts on the cost-effectiveness of the strategies, thereby identifying the factors affecting the total cost of implementing the strategy. This involves varying individual input parameters' value across a range of 10-100% and assessing how this changes the analysis' results.²⁸ Multivariate sensitivity analyses are also performed to assess how simultaneous changes of several variables affect the cost-

effectiveness ratio. Probabilistic uncertainty analyses are performed to explore the impact of variability in (1) input parameters that can be measured, and (2) input parameters for which there is an underlying probability distribution.

To investigate discounting scenarios other than the 3% rate, sensitivity analyses are run with 0 and 6 per cent discount rates.³⁰

ETHICS AND DISSEMINATION

Ethical approval was granted for the safe storage project from the University of Peradeniya, Sri Lanka in March 2008, with additional approval of two amendments in January and July, respectively, of 2011. An amendment for the present study was granted from Rajarata University of Sri Lanka in November of 2013.

The results of the study will be disseminated to stakeholders in local and national government in Sri Lanka as well as the wider academic audience and medical communities through peer-reviewed publications and international conferences.

DISCUSSION

The present paper outlines the economic evaluation of a pesticide safe storage intervention and four potential strategies aimed at reducing mortality of pesticide self-poisoning in Sri Lanka. The study aims to study the cost-effectiveness of implementing such strategies to aid decision- and policy-makers in making well-informed policy decisions to prevent death from pesticide self-poisoning.

To the best of our knowledge this will be among the first economic evaluations undertaken for strategies aimed at reducing the mortality of pesticide self-poisoning. As such, this study will contribute positively to the evidence base of an erstwhile under-researched topic.

The strength of the study lies in its large sample size and the randomised design of the safe storage trial. Data on pesticide self-poisoning cases are currently being collected by the safe storage team, thereby ensuring that primary data sources are employed in the study.

There are several limitations of this study. The chosen analysis and outcome measure, cost per LYS, only focus on mortality, excluding morbidity or quality of life aspects. This focus limits the possibility of comparing the outcome of suicide prevention, i.e. a strategy that targets a fatal condition, with interventions targeting chronic conditions such as diabetes. The choice of a governmental perspective will likely affect the cost-effective ratio of the interventions as it excludes the cost of lost productivity. According to the WHO, suicide is the second leading cause of mortality among 10-24 year olds which means that society experience a huge productivity loss due to their premature deaths.³² A study by Choi et al. (2012) found that the total societal cost of occupational and deliberate pesticide poisoning in South Korea was US\$ 150 million in 2009, and that 90.6% of these costs were attributed to lost productivity.³³

It is not possible to include all the “spill-over effects”, i.e. unexpected effects, which will occur as a result of the interventions and spill over to other sectors and society. It is furthermore impossible to include every single cost and health effects of the strategy, and in the analyses some items will have to be included or excluded for practical reasons. Further limitations involves the exclusion of the trade-off between agricultural benefits of pesticides and lives saved in the legislative strategy; all-

of-life effects, i.e. unrelated on-going health care costs of people who are alive because of the intervention; all costs to the private sector due to changes in pesticide regulation; other non-health sector impacts; and the general cost of educating and training health professionals in Sri Lanka.

Finally, the analyses of the potential strategies are reduced to modelling and threshold analyses due to the severely limited data available on the effectiveness of such strategies. However, the information that these analyses will yield can be used by decision-makers to evaluate the risk of implementing suicide interventions by giving them the tools to determine whether or not the potential gains of the interventions justifies the investments.

There is a great need for more economic evaluations of suicide prevention strategies globally, but especially for low-income countries in the South East Asian region, to guide decision- and policy-makers to implement such strategies as well as prioritising which strategies should be allocated scarce resources.

ACKNOWLEDGEMENT

We thank Mala Ranawake for advice and support, Lal Muttuwatte for creating the map of the study area, the staff at South Asian Clinical Toxicology Research Collaboration for administrative support, and the safe storage fieldwork team leaders Manjula Weerasinghe, Chamil Priyadarshana and Ravi Pieris for technical advice and support.

AUTHORS' CONTRIBUTIONS

LBM and FK conceived the concept and rationale of the study. LBM, ME, KSH, MP, SA, SJ and FK contributed to design of study. LBM drafted the first version of the manuscript. All authors contributed to, read and approved the final manuscript.

FUNDING

LBM is funded by a PhD scholarship from the Faculty of Health and Medical Sciences, University of Copenhagen, Denmark. The safe storage trial is granted by the Wellcome Trust (GR090958). Field level costs of the study are supported by this grant.

COMPETING INTERESTS

None.

Figure legend

Figure 1 **Distribution of study areas in the Anuradhapura District of Sri Lanka (Map of Sri Lanka adapted from ²⁶)**

DS: Divisional secretariat

REFERENCES

1 World Health Organization. *Global Health Estimates 2014 Summary Tables: Deaths by*
2 *cause, age and sex, 2000-2012*. 2014.
3
4 [http://www.who.int/entity/healthinfo/global_burden_disease/GHE_DthGlobal_2000_2012.xls](http://www.who.int/entity/healthinfo/global_burden_disease/GHE_DthGlobal_2000_2012.xls?ua=1)
5 [?ua=1](http://www.who.int/entity/healthinfo/global_burden_disease/GHE_DthGlobal_2000_2012.xls?ua=1) (accessed on 17 Nov. 2014).
6
7
8
9
10
11
12
13
14
15
16
17
18
19
20
21
22
23
24
25
26
27
28
29
30
31
32
33
34
35
36
37
38
39
40
41
42
43
44
45
46
47
48
49
50
51
52
53
54
55
56
57
58
59
60

1 Murray CJ, Vos T, Lozano R, *et al*. Disability-adjusted life years (DALYs) for 291 diseases
2 and injuries in 21 regions, 1990-2010: a systematic analysis for the Global Burden of Disease
3 Study 2010. *Lancet* 2012;380: 2197-2223.
4
5
6
7
8
9
10
11
12
13
14
15
16
17
18
19
20
21
22
23
24
25
26
27
28
29
30
31
32
33
34
35
36
37
38
39
40
41
42
43
44
45
46
47
48
49
50
51
52
53
54
55
56
57
58
59
60

1 World Health Organization, International Association for Suicide Prevention. *Safer access to*
2 *pesticides: community interventions*. Geneva: World health Organization, 2006.
3
4
5
6
7
8
9
10
11
12
13
14
15
16
17
18
19
20
21
22
23
24
25
26
27
28
29
30
31
32
33
34
35
36
37
38
39
40
41
42
43
44
45
46
47
48
49
50
51
52
53
54
55
56
57
58
59
60

1 Gunnell D, Eddleston M, Phillips MR, *et al*. The global distribution of fatal pesticide self-
2 poisoning: systematic review. *BMC Public Health* 2007;7: 357.
3
4
5
6
7
8
9
10
11
12
13
14
15
16
17
18
19
20
21
22
23
24
25
26
27
28
29
30
31
32
33
34
35
36
37
38
39
40
41
42
43
44
45
46
47
48
49
50
51
52
53
54
55
56
57
58
59
60

1 Patel V, Ramasundarahettige C, Vijayakumar L, *et al*. Suicide mortality in India: a nationally
2 representative survey. *Lancet* 2012;379: 2343-2351.
3
4
5
6
7
8
9
10
11
12
13
14
15
16
17
18
19
20
21
22
23
24
25
26
27
28
29
30
31
32
33
34
35
36
37
38
39
40
41
42
43
44
45
46
47
48
49
50
51
52
53
54
55
56
57
58
59
60

1 Yang GH, Phillips MR, Zhou MG, *et al*. Understanding the unique characteristics of suicide
2 in China: national psychological autopsy study. *Biomed Environ Sci* 2005;18: 379-389.
3
4
5
6
7
8
9
10
11
12
13
14
15
16
17
18
19
20
21
22
23
24
25
26
27
28
29
30
31
32
33
34
35
36
37
38
39
40
41
42
43
44
45
46
47
48
49
50
51
52
53
54
55
56
57
58
59
60

1 Gunnell D, Fernando R, Hewagama M, *et al*. The impact of pesticide regulations on suicide in
2 Sri Lanka. *Int J Epidemiol* 2007;36: 1235-1242.
3
4
5
6
7
8
9
10
11
12
13
14
15
16
17
18
19
20
21
22
23
24
25
26
27
28
29
30
31
32
33
34
35
36
37
38
39
40
41
42
43
44
45
46
47
48
49
50
51
52
53
54
55
56
57
58
59
60

1 van der Hoek W, Konradsen F. Analysis of 8000 hospital admissions for acute poisoning in a
2 rural area of Sri Lanka. *Clin Toxicol (Phila)* 2006;44: 225-231.
3
4
5
6
7
8
9
10
11
12
13
14
15
16
17
18
19
20
21
22
23
24
25
26
27
28
29
30
31
32
33
34
35
36
37
38
39
40
41
42
43
44
45
46
47
48
49
50
51
52
53
54
55
56
57
58
59
60

- 9 Sri Lanka Police Services. *Modes of suicides 2011*. 2013.
http://www.police.lk/images/others/crime_trends/2011/mode_suicides_%202011.pdf
(accessed on 9 July 2013).
- 10 Bertolote JM, Fleischmann A, Eddleston M, *et al*. Deaths from pesticide poisoning: a global
response. *Br J Psychiatry* 2006;189: 201-203.
- 11 Jensen HK, Konradsen F, Jors E, *et al*. Pesticide Use and Self-Reported Symptoms of Acute
Pesticide Poisoning among Aquatic Farmers in Phnom Penh, Cambodia. *J Toxicol* 2011;2011:
639814.
- 12 Gunnell D, Eddleston M. Suicide by intentional ingestion of pesticides: a continuing tragedy
in developing countries. *Int J Epidemiol* 2003;32: 902-909.
- 13 Konradsen F, van der Hoek W, Cole DC, *et al*. Reducing acute poisoning in developing
countries--options for restricting the availability of pesticides. *Toxicology* 2003;192: 249-261.
- 14 Mann JJ, Apter A, Bertolote J, *et al*. Suicide prevention strategies: a systematic review. *JAMA*
2005;294: 2064-2074.
- 15 Hawton K. Restricting access to methods of suicide: Rationale and Evaluation of this
approach to suicide prevention. *Crisis: The Journal of Crisis Intervention and Suicide*
Prevention 2007;28: 4-9.
- 16 Pearson M, Anthony ZB, Buckley NA. Prospective policy analysis: how an epistemic
community informed policymaking on intentional self poisoning in Sri Lanka. *Health Res*
Policy Syst 2010;8: 19.

1
2
3
4 17 Eddleston M, Buckley NA, Gunnell D, *et al.* Identification of strategies to prevent death after
5 pesticide self-poisoning using a Haddon matrix. *Inj Prev* 2006;12: 333-337.
6
7
8
9
10 18 World Health Organization. *World Suicide Prevention Day 2009*. 2009.
11 http://www.who.int/mental_health/prevention/suicide/wspd_2009_statement.pdf (accessed on
12 21 Jan. 2012).
13
14
15
16
17 19 World Health Organization. *Clinical Management of Acute Pesticide Intoxication: Prevention*
18 *of Suicidal Behaviours*. Geneva: World Health Organization, 2008.
19
20
21
22 20 Phillips MR, Yang G, Zhang Y, *et al.* Risk factors for suicide in China: a national case-control
23 psychological autopsy study. *Lancet* 2002;360: 1728-1736.
24
25
26
27
28 21 Vijayakumar L, Pirkis J, Whiteford H. Suicide in developing countries (3): prevention efforts.
29 *Crisis* 2005;26: 120-124.
30
31
32
33 22 Vijayakumar L, John S, Pirkis J, *et al.* Suicide in developing countries (2): risk factors. *Crisis*
34 2005;26: 112-119.
35
36
37
38
39 23 Wickramasinghe K, Steele P, Dawson A, *et al.* Cost to government health-care services of
40 treating acute self-poisonings in a rural district in Sri Lanka. *Bull World Health Organ*
41 2009;87: 180-185.
42
43
44
45
46 24 Platt, S, McLean, J, McCollam, A, Blamey, A, Mackenzie, M, McDaid, D, Maxwell, M,
47 Halliday, E, Woodhouse, A. *Evaluation of the first phase of Choose Life: The national*
48 *strategy and action plan to prevent suicide in Scotland*. Edinburgh: Scottish Executive Social
49 Research, 2006.
50
51
52
53
54
55
56 25 Kennelly B. The economic cost of suicide in Ireland. *Crisis* 2007;28: 89-94.
57
58
59
60

- 26 Pearson M, Konradsen F, Gunnell D, *et al.* A community-based cluster randomised trial of safe storage to reduce pesticide self-poisoning in rural Sri Lanka: study protocol. *BMC Public Health* 2011;11: 879.
- 27 Food and Agriculture Organization. *Proceedings of the Asia regional workshop on the implementation, monitoring and observance of the international code of conduct on the distribution and use of pesticides*. Dhaka: FAO, 2005.
- 28 Drummond MF, Sculpher MJ, Torrance GW, *et al.* *Methods for the Economic Evaluation of Health Care Programmes*. 3rd edn. New York: Oxford University Press, 2005.
- 29 Gold MR, Siegel JE, Russel L, *et al.* *Cost-Effectiveness in Health and Medicine*. New York: Oxford University Press, 1996.
- 30 Tan-Torres Edejer T, Baltussen R, Adam T, *et al.* *Making choices in health: WHO guide to cost-effectiveness analysis*. Geneva: World Health Organization, 2003.
- 31 World Health Organization. *Methodological approaches for cost-effectiveness and cost-utility analysis of injury prevention measures*. Copenhagen: World Health Organization, 2011.
- 32 World Health Organization. *Suicide data*. 2014.
http://www.who.int/mental_health/prevention/suicide/suicideprevent/en/ (accessed on 17 Nov. 2014).
- 33 Choi Y, Kim Y, Ko Y, *et al.* Economic burden of acute pesticide poisoning in South Korea. *Trop Med Int Health* 2012;17: 1534-43.

1
2
3
4
5
6
7
8
9
10
11
12
13
14
15
16
17
18
19
20
21
22
23
24
25
26
27
28
29
30
31
32
33
34
35
36
37
38
39
40
41
42
43
44
45
46
47
48
49
50
51
52
53
54
55
56
57
58
59
60

For peer review only

ABSTRACT

Introduction

An estimated 803,900 people worldwide died as a result of self-harm in 2012. The deliberate ingestion of pesticides has been identified as the method most frequently used to commit fatal self-harm globally. In Sri Lanka it is estimated that up to 60% of all suicides are committed using this method. The aim of the present study is to assess the cost-effectiveness of an on-going safe storage intervention currently taking place in a rural Sri Lankan district and to model the cost-effectiveness of implementing the safe storage intervention as well as four potential interventions (legislative, medical management, follow-up contact and mobile phone contact) on a national level.

Methods and analysis

Study design for all the strategies is a cost-effectiveness analysis. A governmental perspective is adopted. The time horizon for tracking the associated costs and health outcomes of the safe storage intervention on district level runs over three years. The time horizon is extended to five years when modelling a full national roll-out of the respective interventions. The discounting of costs and health outcomes are undertaken at the recommended real rate of 3%. Threshold analyses of the modelled strategies are employed to assess the strategies potential for cost-effectiveness, running scenarios with health outcome improvements ranging from 1% to 100%. Sensitivity analyses are also performed. The main outcome measures of the safe storage intervention are incremental cost-effectiveness ratios.

Ethics and dissemination

Ethical approval was granted for the safe storage project from the University of Peradeniya,

Sri Lanka in March of 2008. An amendment for the present study was granted from Rajarata University of Sri Lanka in November of 2013. Findings will be disseminated to public and private stakeholders in local and national government in Sri Lanka as well as the wider academic audience through peer-reviewed publications and international conferences.

Trial registration number

The safe storage cluster trial is registered with the Clinical Trials, ref: NCT1146496 (<http://clinicaltrialsfeeds.org/clinical-trials/show/NCT1146496>).

STRENGTHS AND LIMITATIONS OF THE STUDY

- The study will generate new knowledge to an under-researched topic, i.e. the cost-effectiveness of interventions aimed at reducing the mortality of pesticide self-poisoning.
- The strength of the study lies in the randomised design of the safe storage trial and the large sample size which allows sufficient power to assess the intervention’s effect on self-harm.
- The chosen type of analysis and outcome measure narrows the field of comparisons with other types of interventions.
- Analyses of potential preventive strategies aimed at reducing the mortality of pesticide self-poisoning are reduced to modelling and threshold analyses due to the limited data available.

INTRODUCTION

The World Health Organization (WHO) has estimated that 803,900,000 people worldwide died as a result of self-harm in 2012.¹ In the ~~2010~~recently published Global Burden of Disease Study-2010, self-harm was identified as the second most important type of injury reported and it was among the 25 leading causes of disease burden.²

The WHO has recognised deliberate ingestion of pesticides as the most frequently used method of self-harm globally.³ In a systematic review from 2007, it was estimated that pesticide self-poisoning was responsible for as much as one third of all suicides globally.⁴ In China it is estimated that as much as 58% of all suicides are due to deliberate pesticide ingestion, while Patel et al. recently found that the method was employed in approximately half of all suicides in India.^{5,6}

In 1995, Sri Lanka had one of the highest suicide rates in the world with approximately 47 suicides per 100,000 population.⁷ The country has had great success in reducing the suicide incidence rates through bans of the most toxic pesticides, and in 2005 suicide rates had fallen to 24 per 100,000.⁷ A retrospective study of in-patient records in southern rural Sri Lanka from 1990 to 2002 found that 61% of all acute poisoning cases admitted to hospital were due to pesticide ingestion.⁸ Police records for 2011 showed that 46% of all suicides registered were due to the ingestion of pesticides and insecticides.⁹ Suicide by deliberate ingestion of pesticides therefore continues to be a major public health issue in Sri Lanka as an important cause of premature mortality.

It is hypothesised that pesticide ingestion contributes so heavily to the patterns of suicide in low-income countries because of the easy accessibility to pesticides in farming households and in nearby

shops as well as the high overall case fatality, which ranges from less than 5% to 70%, depending on the pesticides used.^{4,10-12} Yang et al. (2005) found that 61% of all fatal pesticide self-poisoning cases in China was due to unsuccessful medical resuscitation.⁶

There is an urgent need for strategies aimed at preventing deaths from pesticide self-poisoning in Sri Lanka, as well as the rest of the region.^{4,13} A self-harm prevention strategy that has been suggested in the literature is the restriction of access to means.^{14,15} With regards to self-harm using pesticides, it has been recommended by the WHO, and in the literature to restrict the availability of highly toxic pesticides, e.g. by banning the production, import and use of a pesticides, or to restrict access to pesticides by keeping them in locked containers, and reduce the use of pesticides in agricultural practices.^{12,13,16-18} A suggested treatment strategy involves improvement of the medical management of the poisoning cases by ensuring that hospitals have adequate supplies of antidotes, respirators and trained personnel.^{12,17,19} Finally, previous attempts at self-harm is a risk factor for repetition, and findings suggest that post interventions focusing on follow-up contract with people, who have previously attempted self-harm could reduce suicide rates.^{14,20-22}

For decision-makers to determine which health related interventions to implement in their country several factors must be taken into consideration, including public health and economic considerations. The direct and indirect economic costs of self-harm and suicide include emergency services and intensive hospital care as well as costs of lost productivity. A study from Sri Lanka estimated the total direct cost to the Ministry of Health of treating self-poisoned patients to be US\$ 1,072,571. Studies from Scotland and Ireland estimated the cost per suicide to society to be US\$ 3,067,463 and US\$ 2,066,886, respectively (inflationary adjustments have been made to bring all costs to year 2013).²³⁻²⁵ The pain and grief that family members and friends suffer can also be

immense and affect their ability to function in society.¹² The extensive costs of pesticide self-poisonings to families, society and the general economy therefore suggest a strong economic incentive for investment in self-harm interventions.

Presently very little evidence exists on the cost-effectiveness of interventions aimed at reducing the mortality from pesticide self-poisoning which could be used to prioritise their introduction. The overall aim of the study is to address this evidence gap by (1) assessing the cost-effectiveness of an on-going safe storage intervention currently taking place in rural Sri Lanka; (2) assessing the cost-effectiveness of implementing the safe storage intervention on a national level, and (3) modelling the cost-effectiveness of implementing four potential interventions (legislative, medical management, follow-up contact (physical contact through a volunteer organisation and mobile phone contact)) on a national level. In the following, the outline of the economic evaluation of all interventions is presented.

METHODS AND ANALYSIS

Overview of the strategies

Safe storage intervention

The focus of the research is an on-going community-based, cluster randomised controlled trial (RCT) which is presently being conducted in the Anuradhapura district of Sri Lanka's North Central Province. The aim of the RCT is to evaluate the effectiveness of storing pesticides in specially designed lockable containers in reducing the mortality of pesticide self-poisoning as well as the overall incidence of self-harm, and mortality following self-harm.²⁶ Access to pesticides is

restricted by storing them in lockable containers which are then partially buried underground outside the house. The full details on the design and methods employed in the RCT are provided elsewhere (see reference 26 for details). The trial is registered on Clinical Trials, ref: NCT1146496 (<http://clinicaltrialsfeeds.org/clinical-trials/show/NCT1146496>).

Study sample and sample size calculation

The trial has recruited 53,471 households from a total of 180 clusters since 31 December 2010 from the Mahaweli H region in the North Central Province in Sri Lanka, including the divisional secretariats of Thambuthegama, Talawa, Galnewa, Rajanganaya, Nochchiyagama and Ipologama (see figure 1). The randomisation unit was the clusters, primarily villages, which were allocated to either the intervention or control group.²⁶

All households in the study area were approached, briefly introduced to the trial and then they were invited to give verbal consent to participation. Inclusion criteria were households with a resident farmer, or reported use of pesticides or storage of these. Exclusion criteria included villages that had been recruited to previous pilot studies of pesticide safe storage, and households without an adult available to provide consent.²⁶

Under the assumptions that 20% of individuals in the intervention arm lived in households not using a lockable container, and 5% of individuals in the control arm lived in a household using one, it was estimated that 223,925 person years of follow-up were required in each arm to detect a 30% reduction in pesticide self-poisoning with 80% power at the 5 % significance level.

Legislation

In 1995, the Sri Lankan government implemented a national policy banning all pesticide formulations of WHO hazard class Ia/Ib.²⁷ In the legislative strategy, it is assumed that all pesticide formulation(s) of WHO hazard class I and II (moderately hazardous) are banned from production, import and use, and another product is recommended by the Department of Agriculture to substitute these products. The costs of implementing and enforcing a policy banning all class I and II pesticide formulations used for the most commonly grown crops and vegetable products are assessed.

Medical management

In the treatment strategy, it is assumed that case management of pesticide self-poisoning can be improved by ensuring that peripheral hospital facilities have adequate supplies of drugs, including antidotes, ventilators, lab facilities and other necessary equipment to treat and transfer patients. In the analyses, it is determined what such essential packages should entail and how many of these are needed in the hospital facilities at each level. The strategy also includes targeted training of health personnel in pesticide poisoning case management, e.g. following poisoning guidelines.

Follow-up contact post intervention

In the analysis of the follow-up contact strategy, it is assumed that repeated attempts of pesticide self-poisoning among previous self-harmers can be prevented by offering them increased social and emotional support, i.e. offering assistance and companionship as well as counselling on alcohol and drugs, through a volunteer organisation such as the local branch of Befriender's Worldwide, Sumithrayo.

Mobile phone-based post intervention

In the mobile phoned-based intervention, it is likewise assumed that using mobile phones and daily texts to follow-up on patients who have previously self-harmed can prevent repeated episodes of self-harm.

The approaches to prevent mortality from pesticide self-poisoning are summarised in table 1.

Table 1: Description of interventions

| | | |
|---|--------------------|---|
| Preventive approach to reduce mortality from pesticide self-poisoning | Intervention | Description |
| Primary prevention | Safe storage | Provide farmers with lockable devices to safely store pesticides outside of households. |
| | Legislation | Ban all pesticide formulation(s) of WHO hazard class I and II (moderately hazardous) from production, import and use. |
| Tertiary prevention | Medical management | Improve medical management of pesticide self-poisoning cases by ensuring that hospitals have the essential equipment and drugs and that health personnel are properly trained |

| Post intervention | Follow-up | |
|-------------------|--------------------------|--|
| | - Volunteer organisation | Prevent repetitious attempts of self-harm among previous self-harmers by offering them physical, social and emotional support from volunteers. |
| | - Mobile phone | Prevent repetitious attempts of self-harm among previous self-harmers by offering them social contact through phone conversations and daily text messages. |

Economic evaluation of self-harm interventions

Outline of the economic evaluation

The economic framework for all the strategies is a cost-effectiveness analysis (CEA). A governmental perspective is adopted for the economic evaluations, i.e. only cost and outcomes that impacts on government as a third party funder are included while all costs and outcomes for patients are excluded. The comparator in all the analyses is status quo, i.e. it is assumed that no current practice, beyond present level of medical case management, is in place, and all costs and health outcomes associated with the implementation of the respective strategies are compared with the costs and health outcomes in the absence of all interventions.

1
2
3
4
5
6
7
8
9
10
11
12
13
14
15
16
17
18
19
20
21
22
23
24
25
26
27
28
29
30
31
32
33
34
35
36
37
38
39
40
41
42
43
44
45
46
47
48
49
50
51
52
53
54
55
56
57
58
59
60

In the economic evaluation of the safe storage intervention, a three year cost-effectiveness analysis is conducted corresponding to the follow-up period of the intervention. In the modelling of a full national roll-out of the respective interventions, the time horizon for tracking the associated costs and health outcomes is extended to a five year period.

All costs are expressed in US dollars (US\$) and measured in real prices for the reference year (2010) using the gross domestic product deflator. If this is not available, the consumer price index will be used. The discounting of costs and health outcomes is undertaken at the recommended real rate of 3% to take into account the timing of costs and health outcomes of the intervention that does not occur in the present.²⁸⁻³⁰

All participants recruited in the RCT are included in the economic evaluation of the safe storage intervention. When determining the potential cost-effectiveness of the respective strategies on a national scale, data is extrapolated to the actual Sri Lankan population.

Estimating cost

In accordance with the study perspective, all direct costs related to the implementation of the strategies and to the health care system are included in the analysis. Direct costs are divided into non-health and health care costs. Non-health care costs relates to the costs associated with the implementation of the interventions while health care costs are the explicit expenses to the health sector of treating fatal and non-fatal cases of pesticide self-poisonings. The medical treatment intervention technically fall under the category of health care costs but are presented under direct non-health costs along with the other interventions.

All cost and cost offsets relevant to the study perspective are identified, quantified and ascribed a unit cost to estimate the economic burden of pesticide self-poisoning and the cost of implementing the strategies. The cost components for all interventions are divided into the following categories: capital costs, personnel costs, overhead, consumables, and transportation costs.

Unit costs and prices will be obtained from official statistics, providers, health facilities, the Medical Supply Division of the Ministry of Health and the Provincial Department of Health. If reliable data is not available, case regional estimates on unit costs will be obtained from the WHO-CHOICE database and through personal communication with researchers in the field. The wage rate per capita per day is derived from national wage rates.

Direct non-health costs

Safe storage intervention

Data from the safe storage project is used as basis for costing the intervention. All costs associated with the implementation, delivery and follow-up on use of the safe storage intervention are included. Research costs associated with the intervention are excluded from the analyses.

Primary data on resource utilisation directly associated with the implementation of the intervention, e.g. container manufacture, delivery, personnel time dedicated to distributing containers and training farmers how to use them, is available in the safe storage trial databases. Additional items and resource utilisation associated with the intervention will be identified and assessed by reviewing the safe storage protocols and through quantitative interviews with key informants from the project.

The cost of the intervention is calculated by multiplying the resource utilisation of the identified input parameters with the relevant unit costs or prices. Travel cost is estimated on the basis of average distance to the villages, frequency of visits and fuel prices. Annual recurrent costs of spare parts and maintenance of capital costs and the wastage rate of safe containers are assessed and included in the analysis.

Table 2 presents an overview of identified cost components and items that are included in the analyses.

Table 2: Costing the safe storage intervention

| Cost category | Type of cost | Cost components | Cost items | Cost unit |
|---------------|--------------|-----------------|--|--|
| Direct | Health care | Capital costs | Vehicles IT equipment Storage containers, including padlock and three keys | Numbers of units purchased, unit price |
| | | Personnel | Distribution team Community mobilisation team | Salaries, wage rates, man hours |

| | | | | |
|--|--|----------------|---|-------------------------------------|
| | | | Drivers | |
| | | | Contract personnel | |
| | | | Administrative personnel | |
| | | Overheads | Rent: - Storage facilities - Office facilities Telephone and internet Gas, electricity and water Maintenance cost of equipment | Resource utilisation, unit price |
| | | Consumables | Posters Information and invitation letters | Resource utilisation, unit price |
| | | Transportation | Renting vehicles Fuel | Resource utilisation, unit price |

Legislative strategy

It is anticipated that the input parameters for this strategy will primarily include resource utilisation in the design phase, i.e. research, information gathering and consensus building, and the implementation phase. It is furthermore assumed that the Department of Agriculture is financing the

majority of the expenses of implementing this strategy. Relevant cost items pertain to the running of the Pesticide Technical Advisory Committee, creating guidelines for use of pesticides to replace the Class II pesticides, implementation, campaigning and the enforcement of the new policy. The specific cost items and resource utilisation associated with the strategy are identified and assessed using the literature and through quantitative interviews with key informants from the Office of the Registrar of Pesticides, the Department of Agriculture, and the Institute of Policy Studies. Additional cost of the legislation beyond the design phase, implementation and enforcement of the policy are excluded. It is assumed that the pest control effectiveness of the substitute product equals that of the banned products, and that the substitution does not have any negative impact on yields.

The cost of the intervention will be calculated by multiplying resource use of the identified parameters with the unit cost or prices.

Medical management

Cost items and resource use directly associated with the medical management strategy, e.g. additional health personnel, ventilators and ambulances needed and time spent training new personnel, are identified and assessed using quantitative interviews with key informants, e.g. health and administrative personnel at hospitals. The interviews focus on resource utilisation of equipment and medical supplies as well as personnel time (see table 3 for preliminary input parameters). Additional equipment needs required beyond ventilators and laboratory equipment to establish intensive care unit (ICU) level support is likewise assessed.

Table 3: Costing the medical management strategy

| Cost category | Type of cost | Cost components | Cost items | Cost unit |
|---------------|--------------|-----------------|--|--|
| Direct | Health care | Capital costs | Ventilators Laboratory facilities Ambulances | Numbers of units purchased, unit price |
| | | Personnel | Additional health personnel needed in facilities at each level Additional drivers Administrative personnel | Salaries, wage rates, man hours |
| | | Overheads | Maintenance cost of equipment | Resource utilisation, unit price |
| | | Consumables | Drugs Materials and supplies Laboratory tests and examinations | |
| | | Transportation | Fuel | Resource utilisation, |

| | | | | |
|--|--|--|--|------------|
| | | | | unit price |
|--|--|--|--|------------|

The cost of the intervention is calculated by multiplying the resource utilisation of the identified input parameters with the relevant unit cost or price. Transfer cost is estimated on the basis of average distance travelled, frequency of transfers and fuel prices. Annual recurrent costs of spare parts and maintenance of capital costs is estimated as 5% of the total capital cost. Wastage rates of supplies are assessed and included in the analysis.

Follow-up contact

Cost items and resource utilisation associated with the follow-up intervention are identified and assessed using quantitative interviews with key informants from the Sri Lankan branch of Befriender’s Worldwide, Sumithrayo. The preliminary input parameters included in the analysis are presented in table 4.

Table 4: Costing the follow-up intervention

| Cost category | Type of cost | Cost components | Cost items | Cost unit |
|---------------|-----------------|-----------------|------------------------------|--|
| Direct | Non-health care | Capital costs | Vehicles IT equipment | Numbers of units purchased, unit price |

| | | | | |
|--|--|----------------|--|-------------------------------------|
| | | Personnel | Administrative personnel Volunteers Supervision | Salaries, wage rates, man hours |
| | | Overheads | Telephone and internet Maintenance costs of | Resource utilisation, unit price |
| | | | Equipment | |
| | | Consumables | Training material Office supplies | Resource utilisation, unit price |
| | | Transportation | Fuel | Resource utilisation, unit price |

The cost of the intervention is calculated by multiplying resource use of identified parameters with the unit cost or prices. Transportation costs are assessed on the basis of fuel costs, average distance travelled and frequency of follow-up visit. Annual recurrent costs of spare parts and maintenance are calculated as described in previous sections.

Mobile phone contact

Table 5 presents an overview of input parameters included in the mobile phone intervention.

Additional cost items and resource utilisation associated with the intervention will be identified and

assessed using existing databases and through quantitative interviews with researchers within the field.

Table 5: Costing the mobile phone intervention

| Cost category | Type of cost | Cost components | Cost items | Cost unit |
|---------------|-----------------|-----------------|--|--|
| Direct | Non-health care | Capital costs | IT equipment Mobile phones | Numbers of units purchased, unit price |
| | | Personnel | Administrative personnel Health personnel | Salaries, wage rates, man hours |
| | | Overheads | Telephone and internet | Resource utilisation, unit price |
| | | Consumables | Office supplies Training materials | Resource utilisation, unit price |

The cost of the intervention is calculated by multiplying resource use of identified parameters with the unit cost or prices.

Direct health care costs

Costs to the health sector can be divided into hospital treatment (in- and outpatient), outpatient health care, and transportation to and from hospital.³¹

The cost of direct health care is calculated by identifying resource use of relevant health care input parameters, e.g. the number of hospital inpatient and outpatient admissions, as well as the average length-of-stay in hospital; use of drugs and laboratory tests; number of examinations; number of transfers and distance travelled, and multiplying them with the relevant health care unit prices. The average length-of-stay at hospital and average cost per day of pesticide self-poisoned patient is estimated using hospital data. The allocation of joint costs for wards, e.g. administration/support service cost, rental cost of premises and overheads, is based on number of pesticide self-poisoning patients.

In a previous study from Sri Lanka, the direct cost to the Sri Lankan Ministry of Health of treating self-poisoned patients in a single district in 2005/2006 were estimated.²³ This database is consulted to identify cost items and resource utilisation. Additional data and relevant input parameters are obtained from hospital data systems and facility registries and through quantitative interviews with relevant hospital personnel.

Table 6 presents a brief overview of the cost components and items included in the costing of the direct health care costs of treating pesticide self-poisoning cases.

Table 6: Health care costs

| Cost | Type of | Cost | Cost item | Cost unit |
|------|---------|------|-----------|-----------|
|------|---------|------|-----------|-----------|

| category | cost | components | | |
|----------|-------------|---------------|---|----------------------------------|
| Direct | Health care | Capital costs | Ventilators Laboratory facilities Ambulances Buildings | Resource utilisation, unit price |
| | | Personnel | Health personnel Non-medical personnel, incl. drivers and administrative personnel | Salaries, wage rates, man hours |
| | | Overheads | Maintenance cost of equipment Electricity, gas, and water | Resource utilisation, unit price |
| | | Consumables | Drugs Materials and supplies Laboratory tests and examinations | Resource utilisation, unit price |
| | | Transport | Fuel | Resource utilisation, unit |

| | | | | |
|--|--|--|--|-------|
| | | | | price |
|--|--|--|--|-------|

Data collection of fatal and non-fatal pesticide self-poisoning cases

Data on fatal and non-fatal cases of pesticide self-poisoning are currently being collected by the safe storage team from death registries, mortuary and hospital records, hospital admission and emergency department's registries as well as police records.

Estimating health outcomes

The primary analysis of the safe storage intervention follows the intention-to-treat principle, comparing the observed incidence of pesticide self-poisoning between individuals in villages allocated to the intervention, and individuals in villages allocated to the control arm. As described in Pearson et al. (2011), a Poisson regression model is employed in the analysis, with the standard errors inflated to accommodate the clustered design. The analysis is adjusted for minimisation variables used in the random allocation and for seasonal variation in the incidence of pesticide self-poisoning. This same approach is used for the secondary outcome measures.²⁶

In the safe storage intervention, the primary outcome is the incidence of pesticide self-poisoning, both fatal and non-fatal, amongst villagers aged 14 years or older, while secondary outcomes include incidence of pesticide poisoning in general, self-harm, self-poisoning (all substances) and pesticide poisoning in children (younger than 14 years).²⁶ Effectiveness data for the safe storage project is used to estimate the denominator of the economic evaluation ratio, i.e. number of fatal pesticide self-poisoning cases prevented, number of pesticide self-poisoning deaths prevented and life-years saved due to the intervention.

The analyses of the potential strategies are likewise carried out according to the intention-to-treat principle. However, the possibility of conducting a full economic evaluation of the legislative, medical management or follow-up is severely restrained by the limited data available on the effectiveness of such strategies. Threshold analyses are employed to model the potential for cost-effectiveness by ranging the effectiveness of each analysis in reducing death by pesticide self-poisoning from 1% to 100%.

Assessing cost-effectiveness

Incremental cost-effectiveness ratios (ICERs) are calculated to estimate the cost-effectiveness of the safe storage intervention and the potential for cost-effectiveness for the alternative strategies compared to status quo. ICERs are calculated as the ratio of the incremental difference in total costs between the intervention group and the control group (ΔC) is divided by the difference in effects (ΔE):

$$CER = \frac{\Delta C}{\Delta E} = \frac{C_1 - C_0}{E_1 - E_0}$$

The primary outcome of the cost-effectiveness analyses is cost per life year saved (LYS)

Uncertainty and sensitivity analysis

One-way sensitivity analyses are undertaken to assess how parameter uncertainties impacts on the cost-effectiveness of the strategies, thereby identifying the factors affecting the total cost of implementing the strategy. This involves varying individual input parameters' value across a range of 10-100% and assessing how this changes the analysis' results.²⁸ Multivariate sensitivity analyses are also performed to assess how simultaneous changes of several variables affect the cost-

effectiveness ratio. Probabilistic uncertainty analyses are performed to explore the impact of variability in (1) input parameters that can be measured, and (2) input parameters for which there is an underlying probability distribution.

To investigate discounting scenarios other than the 3% rate, sensitivity analyses are run with 0 and 6 per cent discount rates.³⁰

ETHICS AND DISSEMINATION

Ethical approval was granted for the safe storage project from the University of Peradeniya, Sri Lanka in March 2008, with additional approval of two amendments in January and July, respectively, of 2011. An amendment for the present study was granted from Rajarata University of Sri Lanka in November of 2013.

The results of the study will be disseminated to stakeholders in local and national government in Sri Lanka as well as the wider academic audience and medical communities through peer-reviewed publications and international conferences.

DISCUSSION

The present paper outlines the economic evaluation of a pesticide safe storage intervention and four potential strategies aimed at reducing mortality of pesticide self-poisoning in Sri Lanka. The study aims to study the cost-effectiveness of implementing such strategies to aid decision- and policy-makers in making well-informed policy decisions to prevent death from pesticide self-poisoning.

To the best of our knowledge this will be among the first economic evaluations undertaken for strategies aimed at reducing the mortality of pesticide self-poisoning. As such, this study will contribute positively to the evidence base of an erstwhile under-researched topic.

The strength of the study lies in its large sample size and the randomised design of the safe storage trial. Data on pesticide self-poisoning cases are currently being collected by the safe storage team, thereby ensuring that primary data sources are employed in the study.

There are several limitations of this study. The chosen analysis and outcome measure, cost per LYS, only focus on mortality, excluding morbidity or quality of life aspects. This focus limits the possibility of comparing the outcome of suicide prevention, i.e. a strategy that targets a fatal condition, with interventions targeting chronic conditions such as diabetes. The choice of a governmental perspective will likely affect the cost-effective ratio of the interventions as it excludes the cost of lost productivity. According to the WHO, suicide is the second leading cause of mortality among 10-24 year olds which means that society experience a huge productivity loss due to their premature deaths.³² A study by Choi et al. (2012) found that the total societal cost of occupational and deliberate pesticide poisoning in South Korea was US\$ 150 million in 2009, and that 90.6% of these costs were attributed to lost productivity.³³

It is not possible to include all the “spill-over effects”, i.e. unexpected effects, which will occur as a result of the interventions and spill over to other sectors and society. It is furthermore impossible to include every single cost and health effects of the strategy, and in the analyses some items will have to be included or excluded for practical reasons. Further limitations involves the exclusion of the trade-off between agricultural benefits of pesticides and lives saved in the legislative strategy; all-

of-life effects, i.e. unrelated on-going health care costs of people who are alive because of the intervention; all costs to the private sector due to changes in pesticide regulation; other non-health sector impacts; and the general cost of educating and training health professionals in Sri Lanka.

Finally, the analyses of the potential strategies are reduced to modelling and threshold analyses due to the severely limited data available on the effectiveness of such strategies. However, the information that these analyses will yield can be used by decision-makers to evaluate the risk of implementing suicide interventions by giving them the tools to determine whether or not the potential gains of the interventions justifies the investments.

There is a great need for more economic evaluations of suicide prevention strategies globally, but especially for low-income countries in the South East Asian region, to guide decision- and policy-makers to implement such strategies as well as prioritising which strategies should be allocated scarce resources.

ACKNOWLEDGEMENT

We thank Mala Ranawake for advice and support, Lal Muttuwatte for creating the map of the study area, the staff at South Asian Clinical Toxicology Research Collaboration for administrative support, and the safe storage fieldwork team leaders Manjula Weerasinghe, Chamil Priyadarshana and Ravi Pieris for technical advice and support.

AUTHORS' CONTRIBUTIONS

LBM and FK conceived the concept and rationale of the study. LBM, ME, KSH, MP, SA, SJ and FK contributed to design of study. LBM drafted the first version of the manuscript. All authors contributed to, read and approved the final manuscript.

FUNDING

LBM is funded by a PhD scholarship from the Faculty of Health and Medical Sciences, University of Copenhagen, Denmark. The safe storage trial is granted by the Wellcome Trust (GR090958). Field level costs of the study are supported by this grant.

COMPETING INTERESTS

None.

REFERENCES

1 World Health Organization. *Global Health Estimates 2014 Summary Tables: Deaths by cause, age and sex, 2000-2012*. 2014.
http://www.who.int/entity/healthinfo/global_burden_disease/GHE_DthGlobal_2000_2012.xls?ua=1 (accessed on 17 Nov. 2014).

2 Murray CJ, Vos T, Lozano R, *et al*. Disability-adjusted life years (DALYs) for 291 diseases and injuries in 21 regions, 1990-2010: a systematic analysis for the Global Burden of Disease Study 2010. *Lancet* 2012;380: 2197-2223.

- 3 World Health Organization, International Association for Suicide Prevention. *Safer access to pesticides: community interventions*. Geneva: World health Organization, 2006.
- 4 Gunnell D, Eddleston M, Phillips MR, *et al*. The global distribution of fatal pesticide self-poisoning: systematic review. *BMC Public Health* 2007;7: 357.
- 5 Patel V, Ramasundarahettige C, Vijayakumar L, *et al*. Suicide mortality in India: a nationally representative survey. *Lancet* 2012;379: 2343-2351.
- 6 Yang GH, Phillips MR, Zhou MG, *et al*. Understanding the unique characteristics of suicide in China: national psychological autopsy study. *Biomed Environ Sci* 2005;18: 379-389.
- 7 Gunnell D, Fernando R, Hewagama M, *et al*. The impact of pesticide regulations on suicide in Sri Lanka. *Int J Epidemiol* 2007;36: 1235-1242.
- 8 van der Hoek W, Konradsen F. Analysis of 8000 hospital admissions for acute poisoning in a rural area of Sri Lanka. *Clin Toxicol (Phila)* 2006;44: 225-231.
- 9 Sri Lanka Police Services. *Modes of suicides 2011*. 2013.
http://www.police.lk/images/others/crime_trends/2011/mode_suicides_%202011.pdf
(accessed on 9 July 2013).
- 10 Bertolote JM, Fleischmann A, Eddleston M, *et al*. Deaths from pesticide poisoning: a global response. *Br J Psychiatry* 2006;189: 201-203.
- 11 Jensen HK, Konradsen F, Jors E, *et al*. Pesticide Use and Self-Reported Symptoms of Acute Pesticide Poisoning among Aquatic Farmers in Phnom Penh, Cambodia. *J Toxicol* 2011;2011: 639814.

1
2
3
4 12 Gunnell D, Eddleston M. Suicide by intentional ingestion of pesticides: a continuing tragedy
5 in developing countries. *Int J Epidemiol* 2003;32: 902-909.
6
7
8
9
10 13 Konradsen F, van der Hoek W, Cole DC, *et al.* Reducing acute poisoning in developing
11 countries--options for restricting the availability of pesticides. *Toxicology* 2003;192: 249-261.
12
13
14 14 Mann JJ, Apter A, Bertolote J, *et al.* Suicide prevention strategies: a systematic review. *JAMA*
15 2005;294: 2064-2074.
16
17
18
19
20 15 Hawton K. Restricting access to methods of suicide: Rationale and Evaluation of this
21 approach to suicide prevention. *Crisis: The Journal of Crisis Intervention and Suicide*
22 *Prevention* 2007;28: 4-9.
23
24
25
26
27
28 16 Pearson M, Anthony ZB, Buckley NA. Prospective policy analysis: how an epistemic
29 community informed policymaking on intentional self poisoning in Sri Lanka. *Health Res*
30 *Policy Syst* 2010;8: 19.
31
32
33
34
35
36 17 Eddleston M, Buckley NA, Gunnell D, *et al.* Identification of strategies to prevent death after
37 pesticide self-poisoning using a Haddon matrix. *Inj Prev* 2006;12: 333-337.
38
39
40
41 18 World Health Organization. *World Suicide Prevention Day 2009*. 2009.
42 http://www.who.int/mental_health/prevention/suicide/wspd_2009_statement.pdf (accessed on
43 21 Jan. 2012).
44
45
46
47
48 19 World Health Organization. *Clinical Management of Acute Pesticide Intoxication: Prevention*
49 *of Suicidal Behaviours*. Geneva: World Health Organization, 2008.
50
51
52
53
54 20 Phillips MR, Yang G, Zhang Y, *et al.* Risk factors for suicide in China: a national case-control
55 psychological autopsy study. *Lancet* 2002;360: 1728-1736.
56
57
58
59
60

- 1
2
3
4 21 Vijayakumar L, Pirkis J, Whiteford H. Suicide in developing countries (3): prevention efforts.
5
6 *Crisis* 2005;26: 120-124.
7
8
9
10 22 Vijayakumar L, John S, Pirkis J, *et al.* Suicide in developing countries (2): risk factors. *Crisis*
11
12 2005;26: 112-119.
13
14
15 23 Wickramasinghe K, Steele P, Dawson A, *et al.* Cost to government health-care services of
16
17 treating acute self-poisonings in a rural district in Sri Lanka. *Bull World Health Organ*
18
19 2009;87: 180-185.
20
21
22 24 Platt, S, McLean, J, McCollam, A, Blamey, A, Mackenzie, M, McDaid, D, Maxwell, M,
23
24 Halliday, E, Woodhouse, A. *Evaluation of the first phase of Choose Life: The national*
25
26 *strategy and action plan to prevent suicide in Scotland*. Edinburgh: Scottish Executive Social
27
28 Research, 2006.
29
30
31
32 25 Kennelly B. The economic cost of suicide in Ireland. *Crisis* 2007;28: 89-94.
33
34
35
36 26 Pearson M, Konradsen F, Gunnell D, *et al.* A community-based cluster randomised trial of
37
38 safe storage to reduce pesticide self-poisoning in rural Sri Lanka: study protocol. *BMC Public*
39
40 *Health* 2011;11: 879.
41
42
43 27 Food and Agriculture Organization. *Proceedings of the Asia regional workshop on the*
44
45 *implementation, monitoring and observance of the international code of conduct on the*
46
47 *distribution and use of pesticides*. Dhaka: FAO, 2005.
48
49
50
51 28 Drummond MF, Sculpher MJ, Torrance GW, *et al.* *Methods for the Economic Evaluation of*
52
53 *Health Care Programmes*. 3rd edn. New York: Oxford University Press, 2005.
54
55
56
57
58
59
60

29 Gold MR, Siegel JE, Russel L, *et al.* *Cost-Effectiveness in Health and Medicine*. New York: Oxford University Press, 1996.

30 Tan-Torres Edejer T, Baltussen R, Adam T, *et al.* *Making choices in health: WHO guide to cost-effectiveness analysis*. Geneva: World Health Organization, 2003.

31 World Health Organization. *Methodological approaches for cost-effectiveness and cost-utility analysis of injury prevention measures*. Copenhagen: World Health Organization, 2011.

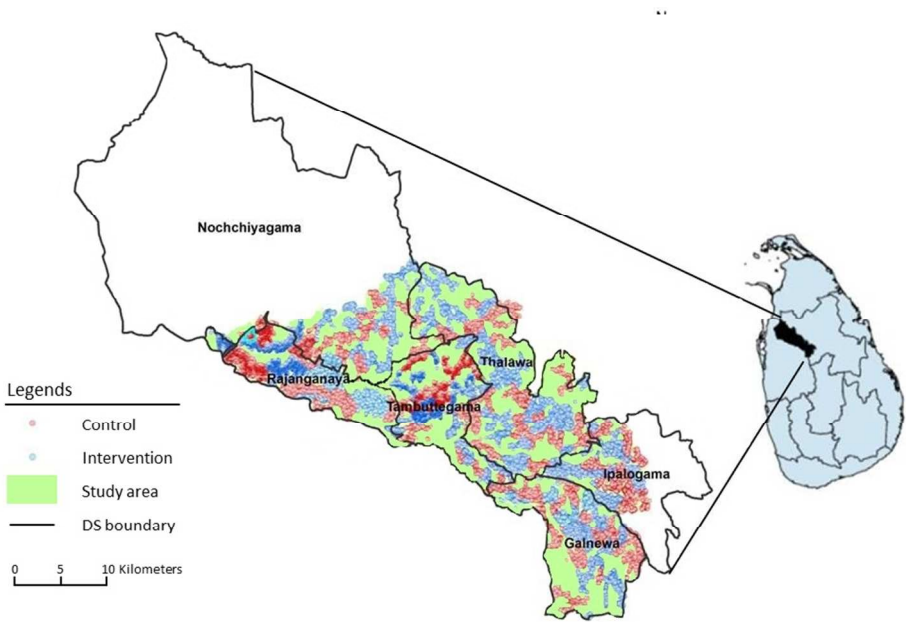
32 World Health Organization. *Suicide data*. 2014.
http://www.who.int/mental_health/prevention/suicide/suicideprevent/en/ (accessed on 17 Nov. 2014).

33 Choi Y, Kim Y, Ko Y, *et al.* Economic burden of acute pesticide poisoning in South Korea. *Trop Med Int Health* 2012;17: 1534-43.

Figure legend

Figure 1 **Distribution of study areas in the Anuradhapura District of Sri Lanka (Map of Sri Lanka adapted from ²⁶)**

DS: Divisional secretariat



Distribution of study areas in the Anuradhapura District of Sri Lanka (Map of Sri Lanka adapted from 26)
279x173mm (96 x 96 DPI)