

# BMJ Open Identifying low-value clinical practices in critical care medicine: protocol for a scoping review

Daniel J Niven,<sup>1</sup> T Jared McCormick,<sup>2</sup> Sharon E Straus,<sup>3</sup> Brenda R Hemmelgarn,<sup>4</sup> Lianne P Jeffs,<sup>5</sup> Henry T Stelfox<sup>6</sup>

**To cite:** Niven DJ, McCormick TJ, Straus SE, *et al.* Identifying low-value clinical practices in critical care medicine: protocol for a scoping review. *BMJ Open* 2015;**5**:e008244. doi:10.1136/bmjopen-2015-008244

► Prepublication history and additional material is available. To view please visit the journal (<http://dx.doi.org/10.1136/bmjopen-2015-008244>).

Received 19 March 2015  
Revised 26 August 2015  
Accepted 2 September 2015



CrossMark

For numbered affiliations see end of article.

## Correspondence to

Dr Daniel J Niven;  
Daniel.niven@  
albertahealthservices.ca

## ABSTRACT

**Introduction:** Reducing unnecessary, low-value clinical practice (ie, de-adoption) is key to improving value for money in healthcare, especially among patients admitted to intensive care units (ICUs) where resource consumption exceeds other medical and surgical populations. Research suggests that low-value clinical practices are common in medicine, however systematically and objectively identifying them is a widely cited barrier to de-adoption. We will conduct a scoping review to identify low-value clinical practices in adult critical care medicine that are candidates for de-adoption.

**Methods and analysis:** We will systematically search the literature to identify all randomised controlled trials or systematic reviews that focus on diagnostic or therapeutic interventions in adult patients admitted to medical, surgical or specialty ICUs, and are published in 3 general medical journals with the highest impact factor (*New England Journal of Medicine*, *The Lancet*, *Journal of the American Medical Association*). 2 investigators will independently screen abstracts and full-text articles against inclusion criteria, and extract data from included citations. Included citations will be classified according to whether or not they represent a repeat examination of the given research question (ie, replication research), and whether the results are similar or contradictory to the original study. Studies with contradictory results will determine clinical practices that are candidates for de-adoption.

**Ethics and dissemination:** Our scoping review will use robust methodology to systematically identify a list of clinical practices in adult critical care medicine with evidence supporting their de-adoption. In addition to adding to advancing the study of de-adoption, this review may also serve as the launching point for clinicians and researchers in critical care to begin reducing the number of low-value clinical practices. Dissemination of these results to relevant stakeholders will include tailored presentations at local, national and international meetings, and publication of a manuscript. Ethical approval is not required for this study.

## INTRODUCTION

Patients admitted to the intensive care unit (ICU) represent the sickest patients in the

## Strengths and limitations of this study

- Systematic and objective identification of low-value clinical practices in critical care, addresses one of the highly cited barriers to the de-adoption process (ie, objective identification of candidate practices).
- Highly generalisable and replicable methodology may be employed to identify low-value clinical practices in most other healthcare disciplines.
- Although this study will identify clinical practices in critical care that are candidates for de-adoption, the quality of the included studies will not be assessed given its scoping nature.

healthcare system. As a result of the severity of their illness, they are subject to twice as many interventions (diagnostic and therapeutic) as other hospitalised patients, and are frequently unable to participate in their own medical care.<sup>1 2</sup> Data from the USA suggests that critical care medicine beds, occupancy rates and associated costs are increasing.<sup>3 4</sup> In the USA for 2005, critical care accounted for 13.4% of all hospital costs, 4.1% of national health costs and 0.66% of the gross domestic product (GDP).<sup>3</sup> In Canada for 2004, ICU costs were estimated to account for approximately \$6 billion of the \$39 billion spent on hospital services (0.5% of the 2004 GDP),<sup>5</sup> and estimates from the Netherlands indicate ICU departments accounted for 20% of hospital budgets.<sup>6</sup> Research suggests that up to 30% of interventions provided to patients admitted to acute care facilities may be unnecessary.<sup>7 8</sup> Therefore, a considerable portion of this cost may be modifiable. Modifying this cost is important as projections suggest that with an ageing population, and our continuously advancing ability to treat critical illness, the demand for critical care services is likely to exceed the financial and human resource capacities of healthcare systems.<sup>4</sup> Therefore, there is an urgent need for research to

reduce any unnecessary use of these expensive and limited resources.

Research in critical care has traditionally focused on defining the pathophysiology of critical illness, evaluating the efficacy of different life-sustaining interventions (eg, high-frequency oscillatory ventilation vs conventional mechanical ventilation for patients with the acute respiratory distress syndrome (ARDS)<sup>9</sup>), or evaluating therapies targeted at specific diseases or syndromes (eg, recombinant human activated protein C for patients with severe sepsis<sup>10</sup>).<sup>11</sup> Although this type of research contributes important information to the science that underpins critical care, there is a growing need for research that promotes the implementation of best practices into clinical care (ie, knowledge translation (KT)). This includes facilitating the adoption of effective clinical practices (eg, prone positioning in patients with severe ARDS<sup>12</sup>), and the de-adoption of those demonstrated to have no effect on patient outcomes (eg, use of hydroxyethyl starches for fluid resuscitation<sup>13</sup>).

Given existing fiscal climates, the notion of decreasing the use of unnecessary clinical practices is quickly permeating the medical literature, and has been recognised by professional societies, and governments as an integral component to the delivery of high-quality clinical care.<sup>14–17</sup> Established clinical practices may be shown to be unnecessary or even harmful through publication of new scientific evidence. This process has recently been referred to as medical reversal.<sup>18</sup> Medical reversal implies that patients who received the reversed practice may have experienced unnecessary harms associated with prior adoption, and may continue to be harmed until the reversed practice is de-adopted.<sup>18–19</sup> Furthermore, the adoption of clinical practices that are later de-adopted imposes substantial inefficiencies on the healthcare system wherein resources that could have been dedicated to other purposes are instead devoted to a technology that is ineffective. Unfortunately, medical reversal and low-value clinical practices are common. A recent review of all research articles published in the *New England Journal of Medicine* between 2001 and 2010 found that 363 of 1344 (27%) original articles describing a medical practice examined the efficacy of an established practice (ie, replication research), among which 146 studies found evidence for practice reversal (40%).<sup>20</sup>

Although reversal appears to be common, and has negative consequences for patients, providers and healthcare systems, there is limited research to guide the systematic identification of such low-value clinical practices. While the publication of new scientific evidence can be used to identify reversal for an individual practice, this does not provide a rigorous means of capturing all potentially low-value clinical practices within a given discipline, especially those that became standard practice before the evidence-based medicine era, and thus are not supported by high-quality evidence. Nonetheless, other researchers and professional societies have developed lists of low-value clinical practices. Through a search of highly cited

original clinical research citations, Ioannidis<sup>21</sup> identified that 7 of 45 (16%) highly cited publications claiming an intervention to be effective were eventually contradicted through subsequent research. Through their health technology appraisal programme, the National Institute for Health and Care Excellence (NICE) created a programme to identify ineffective clinical practices.<sup>14</sup> Their goal was to identify low-value interventions, which if stopped would save over £1 million per intervention. To date, their online database contains 1347 ‘do not do’ recommendations.<sup>22</sup> In 2010, the Australian government introduced a programme for managing their Medicare Benefits Schedule (MBS), named the Comprehensive Management Framework (CMF).<sup>15</sup> One of their key objectives was to create a systematic and transparent strategy to identify low-value clinical services whose inclusion in the MBS required review.<sup>15</sup> Using an environmental scanning approach that involved triangulation of data from a search of peer-reviewed literature, targeted search of select databases, and opportunistic sampling of stakeholder groups, Elshaug *et al*<sup>15</sup> identified 156 potentially unsafe and/or ineffective practices. Finally, the Choosing Wisely<sup>17</sup> campaign along with its international extensions (eg, Choosing Wisely Canada<sup>23</sup>) recently published a number of specialty-specific ‘do not do’ lists, generated through combinations of literature searches, expert opinion and modified Delphi processes.

Although each of the aforementioned lists of low-value clinical practices identify opportunities from which to streamline the delivery of healthcare, they have limitations including heterogeneity in the methods used to identify the practices, which are generally difficult to replicate. In addition, aside from the Choosing Wisely programme, each approach to identifying low-value care was forced to restrict searches to a single source (eg, one major medical journal),<sup>14–20</sup> or select a restricted subset of identified articles<sup>15</sup> in order to manage the breadth of searching for practices across all medical and surgical specialties. Given the number of potentially low-value clinical practices that exist in medicine, rigorously identifying low-value clinical care is likely to require a specialty-specific approach. The recently published Choosing Wisely Top 5 list in Critical Care Medicine<sup>24</sup> represents a starting point for critical care; however, the results of several recent studies in critical care suggest that this may under-represent the true incidence of medical reversal and opportunities for de-adoption within critical care.<sup>25–29</sup> Identifying a comprehensive list of ineffective and/or harmful clinical practices in critical care medicine is important as critically ill patients are at increased risk of adverse events, consume considerable amounts of healthcare resources, and thus contribute a large portion to the costs of providing acute care medicine.<sup>1–3–5–30</sup> Therefore, we will conduct a scoping review to systematically identify low-value clinical practices in adult critical care medicine wherein there is evidence for practice reversal, and thus candidacy for de-adoption.

## METHODS AND ANALYSIS

### Objectives

This is a protocol for a scoping review to identify clinical practices in adult critical care medicine that should be considered for de-adoption. Methods for inclusion and analysis of articles will be performed according to the recommendations from Arksey and O'Malley<sup>31</sup> and updated by Levac *et al.*<sup>32</sup> The main items in the Preferred Reporting Items for Systematic Review and Meta-analysis Protocols (PRISMA-P) guided the reporting of this protocol.<sup>33</sup>

The specific objectives of this scoping review are:

1. To determine the occurrence of replication research in the three highest impact general medical journals that publish critical care research.
2. To determine the occurrence of practice reversal in the three highest impact general medical journals that publish critical care research.
3. To determine clinical practices in critical care medicine that should be considered for de-adoption.
4. To identify opportunities for systematic reviews and empirical research that examine in greater detail the factors that may be associated with practice reversal (eg, quality of study methodology).

Studies will be classified as replication research if they represent retest replication, or approximate replication as defined by Curran *et al.*<sup>34</sup> (table 1). Retest replication refers to studies that repeat exactly the methodology from a previous study in another group of study participants in order to validate the original findings. Approximate replication refers to studies that repeat a previous study with only minor changes to the population, setting, treatment, outcomes and/or analyses.<sup>34</sup> In addition to these definitions, we will also require the original and replicating studies to be of identical design (eg, both randomised controlled trials

(RCTs)), and the replicating study must have a sample size that is within 10% of the original study. Replicating studies that contradict the results of the original study will define a list of reversed interventions.<sup>18–21</sup> We will use the definition of de-adoption whereby it refers to the discontinuance of a clinical practice, where discontinuance is the decision to reject a practice after it was previously adopted.<sup>35</sup> ICU will be defined as a distinct hospital specialty care unit staffed by specialised health-care professionals where immediate and continuous life-sustaining treatment (eg, mechanical ventilation) is provided to hospitalised patients suffering from life-threatening conditions (eg, septic shock).<sup>36</sup>

### Eligibility criteria

At both level 1 and level 2 citation screening (outlined in detail below), citations will be included in this review if: (1) the study design is a RCT, or systematic review/meta-analysis of RCTs; (2) the study population includes adults (mean age  $\geq 18$  years) admitted to general medical-surgical or specialty ICUs (eg, burn, neurological, cardiac surgical); and (3) the study examines a diagnostic or therapeutic intervention. Articles will be excluded if: (1) the study participants are primarily admitted to coronary care units, defined as hospital specialty units where high-risk patients with a primary cardiac diagnosis (eg, acute myocardial infarction) are managed by a specialist cardiology team<sup>37</sup>; and (2) study design is other than a RCT, or systematic review/meta-analysis (eg, non-original research, cohort study, etc). The study will be restricted to RCTs and systematic reviews/meta-analyses as these represent the highest forms of research evidence, and should be the standard against which any clinical practice is evaluated before widespread implementation.

**Table 1** Key terms and definitions

Term	Definition
Replication research	
Retest replication	Repeating exactly the methodology from an original study*in another group of study participants in order to validate the original findings <sup>34</sup>
Approximate replication	Repeating an original study*with only minor changes to the population, setting, treatment, outcomes and/or analyses <sup>34</sup>
Similar results	Treatment effect from the replication study is in the same direction as the original study
Contradictory results	Treatment effect from the replication study changes direction relative to the original study
Practice reversal	Replication study demonstrates that a practice previously shown to be beneficial or with uncertain impact is ineffective or harmful <sup>18</sup>
Replacement	Replication study demonstrates that a practice previously felt to be harmful or ineffective is beneficial <sup>46</sup>
No change in practice	Replication study demonstrates that a practice previously shown to be harmful is neither beneficial nor harmful (ie, ineffective)
De-adoption	The discontinuance of a clinical practice, where discontinuance is the decision to reject a practice after it was previously adopted <sup>35</sup>

\*For randomised clinical trials: pilot trials do not count as original studies; sample size of the replication study must be within 10% of that of the original study. For systematic reviews/meta-analyses: replication study must include citations from primary research not included in the original study.

### Search strategy

We will search MEDLINE, CENTRAL, and the American College of Physicians (ACP) Journal Club to identify all RCTs or systematic reviews of clinical trials published in the three general medical journals with the highest impact factor (*New England Journal of Medicine*, *The Lancet*, *Journal of the American Medical Association*) that focus on interventions in adult patients admitted to an ICU. The search will be restricted to these three general journals as they are more likely to publish research that changes clinical practice,<sup>38</sup> and have a high readership among practitioners working in general multisystem or specialty ICUs.<sup>39</sup> The MEDLINE and CENTRAL search will use exploded Medical Subject Heading (MeSH) terms, and text words that contain synonyms of *critical care* (eg, intensive care unit, intensive care, critical illness), and diseases/interventions specific to critical care (eg, septic shock, acute respiratory distress syndrome, continuous renal replacement therapy, etc). Search terms will be combined using Boolean logic, and will include wildcards to account for plural words and variations in spelling. The search strategy will also include previously validated study design filters that restrict the results to clinical trials, and systematic reviews.<sup>40 41</sup> A similar search strategy will be developed for the ACP Journal Club, but will exclude the MeSH terms, and study design search filters. Finally, to ensure reproducibility, the search strategy will be validated by a medical librarian using the Peer Review of Electronic Search Strategies (PRESS) checklist.<sup>42</sup> The proposed MEDLINE search strategy is outlined in the online supplementary appendix. All reference management will be performed in EndNote (V.X7, Thomson Reuters).

### Study selection

Prior to the screening of titles and abstracts (level 1 screening), the citation screening form will be calibrated through pilot testing with a random sample of 50 citations from the literature search by two reviewers, independently. The inclusion/exclusion criteria will be serially revised until consistent citation selection is achieved ( $\kappa$  statistic,  $\kappa \geq 0.8$ ).<sup>43</sup> The same two reviewers will then independently screen citations for inclusion through a two-stage process. During level 1 screening, the titles and abstracts of all unique citations will be reviewed to determine which citations meet the inclusion criteria. The full text of any citation classified as *include* or *unclear* by either reviewer during level 1 screening will be reviewed to determine whether it meets the inclusion criteria (level 2 screening). Any eligibility disagreements encountered during level 1 or 2 screening will be resolved by consensus, or arbitration by a third reviewer. Agreement between reviewers at both stages will also be quantified using the  $\kappa$  statistic.<sup>43</sup>

### Data extraction

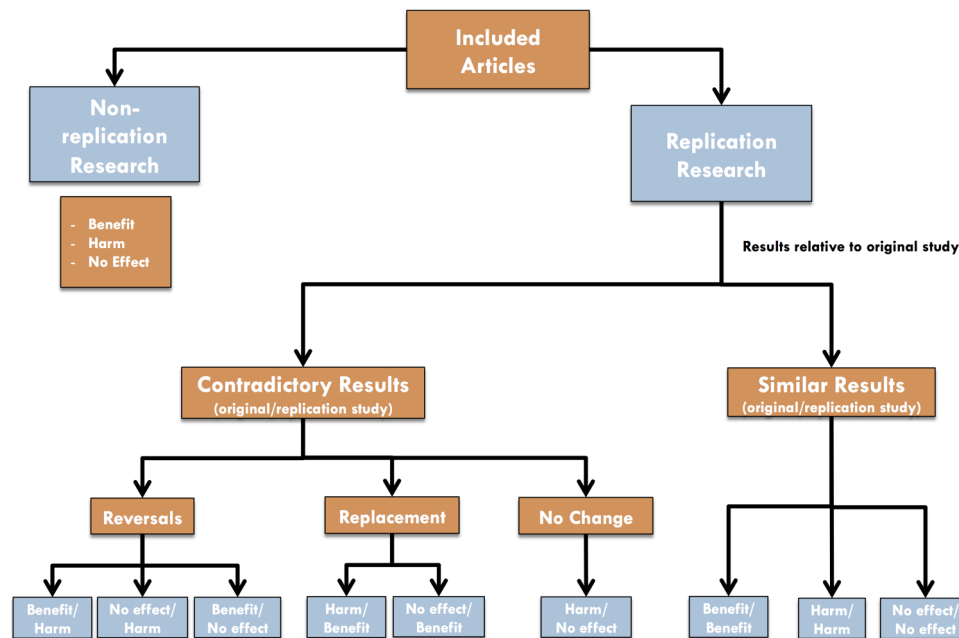
In duplicate and independently, two reviewers will extract data from all included citations using a

predesigned electronic form. Prior to extraction of data, the form will be pilot tested using a random sample of 10 of the included full-text citations. The data extraction form will be serially revised until data are reliably abstracted ( $\kappa \geq 0.8$ ).<sup>43</sup> The extracted data will generally pertain to methodology (eg, study design, number of centres), the study participants (eg, disease and/or syndrome under investigation), the intervention (eg, diagnostic vs therapeutic), the primary outcome (eg, mortality, length of stay, days free of a particular organ failure) and the magnitude of the intervention's effect (actual effect measure related to the primary outcome), and subsequent conclusions drawn by the authors. Any eligibility disagreements encountered during data extraction will be resolved by consensus, or arbitration by a third reviewer. Agreement between reviewers will be quantified using the  $\kappa$  statistic.<sup>43</sup> All data will be managed using Microsoft Excel 2011 (Excel V.14.3.2, Microsoft Corp).

### Analysis

In duplicate, and independently, two reviewers will classify included articles according to whether or not the study represents replication research (figure 1) using definitions outlined in table 1.<sup>34</sup> Any eligibility disagreements encountered during data extraction will be resolved by consensus, or arbitration by a third reviewer. This classification will result in articles being labelled as non-replicated (eg, lung protective ventilation<sup>44</sup>), or replicated (eg, recombinant human activated protein C<sup>10</sup>). To prevent potential misclassification of non-replicated articles, we will review bibliographies of non-replicated studies, and conduct targeted searches within other high-impact general and specialty journals known to publish critical care research (*Annals of Internal Medicine*, *British Medical Journal*, *American Journal of Respiratory and Critical Care Medicine*, *Chest*, *Critical Care Medicine*, *Intensive Care Medicine*, and *Critical Care*).<sup>45</sup> To ensure that non-replicated studies are not being replicated in an active, unpublished study, additional searches will be conducted in two international clinical trial registries (<http://www.clinicaltrials.gov> and <http://www.controlled-trials.com>).

Studies classified as replication research will be further classified by comparing the results to those of the original study, and determining whether they are similar, or contradictory (figure 1 and table 1).<sup>21</sup> This classification scheme will require a comparison of the direction of the effect of the intervention on the study's primary end point (ie, positive, neutral or negative) between the original and replication study. Replication studies will be classified as producing *similar results* as the original study when the treatment effect from the replication study is in the same direction as the first (eg, both beneficial). Replication studies will be classified as *contradictory* if the estimate of the treatment effect changes direction (eg, beneficial to harmful). Studies classified as replication research will identify practice reversal if the replication



**Figure 1** Proposed classification scheme for included articles.

study demonstrates that a practice previously shown to be beneficial or with uncertain impact is either ineffective or harmful.<sup>18</sup> Replication research will indicate replacement of current practice if a practice previously felt to be harmful or ineffective is shown to be beneficial.<sup>46</sup>

Extracted data (eg, number of therapeutic interventions vs number of diagnostic interventions) will be summarised using simple numerical counts and percentages where applicable. Similarly, classification of articles as described above will be summarised using simple numerical counts and percentages. All analyses will be conducted using Stata V.13.1 (Stata Corp, College Station, Texas, USA).

## ETHICS AND DISSEMINATION

This scoping review will lay the foundation for a research programme that will seek to identify and facilitate the de-adoption of low-value clinical practices in adult critical care medicine. It will systematically and objectively identify reversed clinical practices in critical care, thereby addressing one of the frequently cited barriers to any programmatic approach to de-adoption (ie, identifying clinical practices with an empiric evidence base that supports practice reversal).<sup>14 47 48</sup> In addition to the generation of a list of reversed practices in critical care, this review will identify opportunities for systematic reviews and empirical research that examine in greater detail the factors that may be associated with practice reversal (eg, quality of study methodology), so that the deleterious effects of early, widespread implementation of reversed technologies can be minimised through a more cautious, informed approach to adoption. All data will be obtained from publicly available databases; therefore, formal ethical approval will not be required.

There are two main end-of-synthesis outputs anticipated from this study. The main outputs include a list of clinical practices in adult critical care medicine that are ineffective and/or harmful, and a map of all potentially practice-changing randomised trials and systematic reviews in adult critical care that were published in the highest impact general medical and critical care specialty journals. These outputs will be relevant to several stakeholders including patients and their families, front-line healthcare workers that care for critically ill patients (nurses, respiratory therapists, physicians, pharmacists, physiotherapists), knowledge users and decision-makers (ICU patientcare managers and medical directors, hospital and regional decision-makers, health ministers), and researchers (critical care researchers and KT experts). Dissemination of these results to relevant stakeholders will include tailored presentations at local (departmental grand rounds), national (Knowledge Translation Canada Annual Scientific Sessions, Canadian Critical Care Trials Group quarterly meetings and the Critical Care Canada Annual Forum) and international (European Society of Intensive Care Medicine's Annual Congress) meetings. In addition, the results of this study will be published in a health services research or specialty journal whose readership will include several of the aforementioned stakeholders.

The results of this scoping review have the potential to influence the care of many patients, and advance the science of KT. We will use robust methodology to systematically identify low-value clinical practices in critical care medicine that are potential candidates for de-adoption. While successful, widespread de-adoption of these practices will require additional research to design and implement tailored KT interventions, the objective nature of this list is important as promoting the de-adoption of

established practices is likely more difficult than promoting the adoption of new evidence-based practices.<sup>47–49</sup> However, reducing the use of low-value care may release resources (financial and human) currently consumed by these practices and make them available for implementing high-value evidence-based interventions, and thus improve the overall quality of care. In addition to and as a consequence of systematically identifying low-value clinical practices, this review will also produce a list of clinical practices for which the evidence of benefit is either a RCT or systematic review/meta-analysis published in the three general medical journals with the highest impact factor, and thus should be considered to represent best practice. Finally given the use of robust, replicable methodology (ie, scoping review), with transparent reporting of our protocol and literature search, the methodology may be used within other healthcare disciplines, and thus improve the quality and value of care not only for critically ill patients, but for any patient cared for throughout the healthcare system.

#### Author affiliations

<sup>1</sup>Departments of Critical Care Medicine and Community Health Sciences, The O'Brien Institute for Public Health, Cumming School of Medicine, University of Calgary, Calgary, Alberta, Canada

<sup>2</sup>Undergraduate Medical Education, Cumming School of Medicine, University of Calgary, Calgary, Alberta, Canada

<sup>3</sup>Department of Medicine, Li Ka Shing Knowledge Institute of St. Michael's Hospital, University of Toronto, Toronto, Ontario, Canada

<sup>4</sup>Departments of Medicine, and Community Health Sciences, The O'Brien Institute for Public Health, Cumming School of Medicine, University of Calgary, Calgary, Alberta, Canada

<sup>5</sup>Li Ka Shing Knowledge Institute of St. Michael's Hospital, University of Toronto, Toronto, Ontario, Canada

<sup>6</sup>Departments of Critical Care Medicine, Medicine, and Community Health Sciences, The O'Brien Institute for Public Health, Cumming School of Medicine, University of Calgary, Calgary, Alberta, Canada

**Contributors** All authors contributed to study design. DJN, SES and HTS obtained study funding. DJN drafted the protocol. All authors read and approved the final protocol. DJN is the guarantor of the review.

**Funding** This work is supported by an Alberta Innovates–Health Solutions Clinician Fellowship Award, a Knowledge Translation Canada Strategic Training in Health Research Fellowship, and a Knowledge Translation Canada Research Stipend (all awarded to DJN).

**Competing interests** HTS is supported by a Population Health Investigator Award from Alberta Innovates–Health Solutions. SES is funded by a Tier 1 Canada Research Chair. BRH is supported by the Roy and Vi Baay Chair in Kidney Research.

**Provenance and peer review** Not commissioned; externally peer reviewed.

**Open Access** This is an Open Access article distributed in accordance with the Creative Commons Attribution Non Commercial (CC BY-NC 4.0) license, which permits others to distribute, remix, adapt, build upon this work non-commercially, and license their derivative works on different terms, provided the original work is properly cited and the use is non-commercial. See: <http://creativecommons.org/licenses/by-nc/4.0/>

#### REFERENCES

- Cullen DJ, Sweitzer BJ, Bates DW, *et al*. Preventable adverse drug events in hospitalized patients: a comparative study of intensive care and general care units. *Crit Care Med* 1997;25:1289–97.
- Moyen E, Camiré E, Steffox HT. Clinical review: medication errors in critical care. *Crit Care* 2008;12:208.

- Halpern NA, Pastores SM. Critical care medicine in the United States 2000–2005: an analysis of bed numbers, occupancy rates, payer mix, and costs. *Crit Care Med* 2010;38:65–71.
- Finfer S, Vincent JL. Critical care—an all-encompassing specialty. *N Engl J Med* 2013;369:669–70.
- Leeb K, Jokovic A, Sandhu M, *et al*. CIHI survey: intensive care in Canada. *Healthc Q* 2006;9:32–3.
- Oostenbrink JB, Buijs-Van der Woude T, van Agthoven M, *et al* Unit costs of inpatient hospital days. *Pharmacoeconomics* 2003;21:263–71.
- McGlynn EA, Asch SM, Adams J, *et al*. The quality of health care delivered to adults in the United States. *N Engl J Med* 2003;348:2635–45.
- Garland A, Shaman Z, Baron J, *et al*. Physician-attributable differences in intensive care unit costs: a single-center study. *Am J Respir Crit Care Med* 2006;174:1206–10.
- Ferguson ND, Cook DJ, Guyatt GH, *et al*. High-frequency oscillation in early acute respiratory distress syndrome. *N Engl J Med* 2013;368:795–805.
- Ranieri VM, Thompson BT, Barie PS, *et al*. Drotrecogin alfa (activated) in adults with septic shock. *N Engl J Med* 2012;366:2055–64.
- Rubenfeld GD, Angus DC, Pinsky MR, *et al*. Outcomes research in critical care: results of the American Thoracic Society Critical Care Assembly Workshop on Outcomes Research. The Members of the Outcomes Research Workshop. *Am J Respir Crit Care Med* 1999;160:358–67.
- Guérin C, Reignier J, Richard JC, *et al*. Prone positioning in severe acute respiratory distress syndrome. *N Engl J Med* 2013;368:2159–68.
- Zarychanski R, Abou-Setta AM, Turgeon AF, *et al*. Association of hydroxyethyl starch administration with mortality and acute kidney injury in critically ill patients requiring volume resuscitation: a systematic review and meta-analysis. *JAMA* 2013;309:678–88.
- Garner S, Littlejohns P. Disinvestment from low value clinical interventions: NICEly done? *BMJ* 2011;343:d4519.
- Elshaug AG, Watt AM, Mundy L, *et al*. Over 150 potentially low-value health care practices: an Australian study. *Med J Aust* 2012;197:556–60.
- Joshi NP, Stahnishc FW, Noseworthy TW. *Reassessment of health technologies: obsolescence and waste*. Canadian Association for Drugs and Technologies in Health, 2009. <https://www.cadth.ca/reassessment-health-technologies-obsolescence-and-waste> (accessed 22 Oct 2013).
- Cassel CK, Guest JA. Choosing wisely: helping physicians and patients make smart decisions about their care. *JAMA* 2012;307:1801–2.
- Prasad V, Gall V, Cifu A. The frequency of medical reversal. *Arch Intern Med* 2011;171:1675–6.
- Niven DJ, Rubenfeld GD, Kramer AA, *et al*. Effect of published scientific evidence on glycemic control in adult intensive care units. *JAMA Intern Med* 2015;175:801–9.
- Prasad V, Vandross A, Toomey C, *et al*. A decade of reversal: an analysis of 146 contradicted medical practices. *Mayo Clin Proc* 2013;88:790–8.
- Ioannidis JP. Contradicted and initially stronger effects in highly cited clinical research. *JAMA* 2005;294:218–28.
- 'Do not do' recommendations. National Institute for Health and Care Excellence 2015. <http://www.nice.org.uk/guidance> (accessed 20 Feb 2015).
- Choosing Wisely Canada. Canadian Medical Association. 2014. <http://www.choosingwiselycanada.org> (accessed 1 May 2014).
- Halpern SD, Becker D, Curtis JR, *et al*. An official American Thoracic Society/American Association of Critical-Care Nurses/American College of Chest Physicians/Society of Critical Care Medicine policy statement: the Choosing Wisely® Top 5 list in Critical Care Medicine. *Am J Respir Crit Care Med* 2014;190:818–26.
- Finfer S, Chittock DR, Su SY, *et al*. Intensive versus conventional glucose control in critically ill patients. *N Engl J Med* 2009;360:1283–97.
- Sprung CL, Annane D, Keh D, *et al*. Hydrocortisone therapy for patients with septic shock. *N Engl J Med* 2008;358:111–24.
- Yealy DM, Kellum JA, Huang DT, *et al*. ProCESS Investigators. A randomized trial of protocol-based care for early septic shock. *N Engl J Med* 2014;370:1683–93.
- Caironi P, Tognoni G, Masson S, *et al*. Albumin replacement in patients with severe sepsis or septic shock. *N Engl J Med* 2014;370:1412–21.
- Adhikari NK, Dellinger RP, Lundin S, *et al*. Inhaled nitric oxide does not reduce mortality in patients with acute respiratory distress

- syndrome regardless of severity: systematic review and meta-analysis. *Crit Care Med* 2014;42:404–12.
30. Rothschild JM, Landrigan CP, Cronin JW, *et al.* The Critical Care Safety Study: the incidence and nature of adverse events and serious medical errors in intensive care. *Crit Care Med* 2005;33:1694–700.
  31. Arksey H, O'Malley L. Scoping studies: towards a methodological framework. *Int J Soc Res Methodol* 2005;8:19–32.
  32. Levac D, Colquhoun H, O'Brien KK. Scoping studies: advancing the methodology. *Implement Sci* 2010;5:69.
  33. Moher D, Shamseer L, Clarke M, *et al.* Preferred reporting items for systematic review and meta-analysis protocols (PRISMA-P) 2015 statement. *Syst Rev* 2015;4:1.
  34. Curran J, Vachon B, Grimshaw J. *Is replication research informing the results of systematic reviews in knowledge translation research? 21st Cochrane Colloquium.* Cochrane Canada. Quebec City, Quebec, 2013.
  35. Rogers EM. *The innovation-decision process. Diffusion of innovations.* 5th Edn. New York, NY: Free Press, 2003:168–218.
  36. Simchen E, Sprung CL, Galai N, *et al.* Survival of critically ill patients hospitalized in and out of intensive care units under paucity of intensive care unit beds. *Crit Care Med* 2004;32:1654–61.
  37. Walker DM, West NE, Ray SG, *et al.* From coronary care unit to acute cardiac care unit: the evolving role of specialist cardiac care. *Heart* 2012;98:350–2.
  38. McKibbin KA, Wilczynski NL, Haynes RB. What do evidence-based secondary journals tell us about the publication of clinically important articles in primary healthcare journals? *BMC Med* 2004;2:33.
  39. McKibbin KA, Haynes RB, McKinlay RJ, *et al.* Which journals do primary care physicians and specialists access from an online service? *J Med Libr Assoc* 2007;95:246–54.
  40. Higgins J, Green S, eds. *Cochrane handbook for systematic reviews of interventions version 5.1.0, updated March 2011.* The Cochrane Collaboration, 2011.
  41. Search strategy used to create the systematic reviews subset on PubMed. U.S. National Library of Medicine. 2014. [http://www.nlm.nih.gov/bsd/pubmed\\_subsets/sysreviews\\_strategy.html](http://www.nlm.nih.gov/bsd/pubmed_subsets/sysreviews_strategy.html) (accessed 3 Sep 2014).
  42. Sampson M, McGowan J, Cogo E, *et al.* An evidence-based practice guideline for the peer review of electronic search strategies. *J Clin Epidemiol* 2009;62:944–52.
  43. Landis JR, Koch GG. The measurement of observer agreement for categorical data. *Biometrics* 1977;33:159–74.
  44. [No authors listed]. Ventilation with lower tidal volumes as compared with traditional tidal volumes for acute lung injury and the acute respiratory distress syndrome. The Acute Respiratory Distress Syndrome Network. *N Engl J Med* 2000;342:1301–8.
  45. Harhay MO, Wagner J, Ratcliffe SJ, *et al.* Outcomes and statistical power in adult critical care randomized trials. *Am J Respir Crit Care Med* 2014;189:1469–78.
  46. Prasad V, Cifu A. Medical reversal: why we must raise the bar before adopting new technologies. *Yale J Biol Med* 2011;84:471–8.
  47. Elshaug AG, Hiller JE, Tunis SR, *et al.* Challenges in Australian policy processes for disinvestment from existing, ineffective health care practices. *Aust N Z Health Policy* 2007;4:23.
  48. Garner S, Docherty M, Somner J, *et al.* Reducing ineffective practice: challenges in identifying low-value health care using Cochrane systematic reviews. *J Health Serv Res Policy* 2013;18:6–12.
  49. Banta HD, Thacker SB. The case for reassessment of health care technology. Once is not enough. *JAMA* 1990;264:235–40.

## APPENDIX – Draft MEDLINE Search Strategy

1. Critical Illness/ or Critical Care/ or Intensive Care/ or Intensive Care Units/ or Burn Units/ or Respiratory Care Units/
2. (ICU\* or SICU\* or critical illness or critically ill or intensive care unit\* or surgical intensive care or or ((intensive or critical) adj3 care)).ab,ti
3. Sepsis/ or Shock,septic/
4. (sepsis or septic\* or SIRS or systemic inflammatory response syndrome or blood poisoning or pyaemia or pyemia or pyohemia or septic shock).ab,ti
5. Exp Shock/
6. (cardiogenic shock or traumatic shock or hemorrhag\* or haemorrhag\* or hemorrhagic shock or haemorrhagic shock or surgical shock).ab,ti
7. Exp Heart arrest/ or Exp Cardiopulmonary resuscitation/ or Anoxia/
8. (heart arrest\* or out-of-hospital cardiac arrest\* or sudden cardiac death or cardiac arrest\* or cardiopulmonary resuscitation or cardio-pulmonary resuscitation or advanced cardiac life support or respiratory arrest or pulseless or anox\*).ab,ti
9. Craniocerebral Trauma/ or Brain Injuries/ or Brain Hemorrhage, Traumatic/ or Diffuse Axonal Injury/
10. (craniocerebral trauma or craniocerebral injur\* or crushing skull injury or frontal region trauma or head injur\* or multiple head injuries or head trauma or occipital region trauma or occipital trauma or parietal region trauma or temporal region trauma or brain injur\* or brain contusion or TBI or brain lacerations or cortical contusion or post-traumatic encephalopathy or traumatic encephalopathy or traumatic brain hemorrhage or diffuse axonal inj\*).ab,ti
11. Exp Positive-pressure Respiration/ or Respiration, artificial/ or High-frequency Ventilation/ or Noninvasive Ventilation/ or Ventilator weaning/ or Respiratory Insufficiency/ or Lung Injury/ or Acute Lung Injury/ or Ventilator-induced Lung Injury/ or Respiratory Distress Syndrome, Adult/
12. (positive-pressure respiration or positive end-expiratory pressure or positive-pressure ventilation or continuous positive airway pressure or intermittent positive-pressure breathing or intermittent positive-pressure ventilation or artificial respiration or mechanical ventilat\* or (high-frequency adj3 ventilat\*) or noninvasive ventilation or non-invasive ventilation or ventilator weaning or mechanical ventilator weaning or respirator weaning or respiratory insufficiency or respiratory failure or respiratory depression or ventilatory depression or lung inj\* or pulmonary inj\* or acute lung inj\* or ALI or acute respiratory distress syndrome or adult respiratory distress syndrome or ARDS).ab,ti
13. exp Acute Kidney Injury/ or Renal Replacement Therapy/ or Renal Dialysis/ or Hemofiltration/
14. (acute kidney injury or AKI or acute kidney failure or acute kidney insufficiency or acute renal injury or acute renal insufficiency or acute renal failure or ARF or renal replacement therapy or RRT or kidney replacement therapy or renal dialysis or extracorporeal dialysis or hemodialysis or continuous renal replacement therapy or CRRT or continuous venovenous hemodiafiltration or CVVHDF or continuous venovenous hemofiltration or CVVH or multiple organ failure or multiple organ system dysfunction or multisystem organ failure or multi-organ failure\* or life support\* or MODS or MSOF).ab,ti
15. Exp extracorporeal circulation/
16. (extracorporeal circulation or extracorporeal membrane oxygenation or ECMO or extracorporeal life support or ECLS).ab,ti.
17. or/1-16
18. limit 17 to systematic reviews
19. randomized controlled trial.pt.
20. controlled clinical trial.pt.
21. randomized.ab.
22. placebo.ab.
23. clinical trials as topic.sh



24. randomly.ab.
25. trial.ti.
26. or/19-25
27. exp animals/ not humans.sh
28. 26 not 27
29. 17 and 28
30. 18 or 29
31. exp Animals/ not (exp Animals/ and Humans/)
32. 30 not 31
33. (comment or editorial or interview or letter or news).pt.
34. 32 not 33
35. New England Journal of Medicine.jn
36. lancet.jn
37. (JAMA or Journal of the American Medical Association).jn
38. or/35-37
39. 34 and 38