



Collaborative care for co-morbid depression and diabetes: a systematic review and meta-analysis

Journal:	<i>BMJ Open</i>
Manuscript ID:	bmjopen-2013-004706
Article Type:	Research
Date Submitted by the Author:	18-Dec-2013
Complete List of Authors:	Atlantis, Evan; University of Western Sydney, Family and Community Health Research Group School of Nursing and Midwifery Fahey, Paul; University of Western Sydney, School of Science and Health Foster, Jann; University of Western Sydney, Family and Community Health Research Group School of Nursing and Midwifery
Primary Subject Heading:	Patient-centred medicine
Secondary Subject Heading:	Diabetes and endocrinology, Evidence based practice, Patient-centred medicine, Mental health
Keywords:	General diabetes < DIABETES & ENDOCRINOLOGY, Diabetes & endocrinology < INTERNAL MEDICINE, Depression & mood disorders < PSYCHIATRY

SCHOLARONE™
Manuscripts

Article title: Collaborative care for co-morbid depression and diabetes: a systematic review
and meta-analysis

^{1,2}Evan Atlantis, PhD; e-mail: e.atlantis@uws.edu.au

³Paul Fahey, MMedStat; e-mail: p.fahey@uws.edu.au

¹Jann Foster, PhD; e-mail: J.Foster@uws.edu.au

¹School of Nursing and Midwifery, University of Western Sydney, Campbelltown Campus,
New South Wales, Australia

²School of Medicine, University of Adelaide, Adelaide, South Australia, Australia

³School of Science and Health, University of Western Sydney, Campbelltown Campus, New
South Wales, Australia

This research was performed at the University of Western Sydney.

Keywords: Collaborative care; depression; diabetes; systematic review; meta-analysis

Text word count: 2798

Abstract word count: 235

1
2
3 For submission to: BMJ open
4
5 Date: 18 December 2013
6
7
8 Corresponding Author: Evan Atlantis, PhD
9
10 Senior Research Fellow
11
12 Family and Community Health Research Group
13
14 School of Nursing and Midwifery | University of Western
15
16 Sydney
17
18 Building 17, Room 17.1.14, Campbelltown Campus,
19
20 Locked Bag 1797, Penrith NSW 2751 AUSTRALIA
21
22 Phone: + 61 2 4620 3263
23
24 Fax: + 61 2 4620 3199
25
26 Email: e.atlantis@uws.edu.au
27
28
29
30
31
32
33
34
35
36
37
38
39
40
41
42
43
44
45
46
47
48
49
50
51
52
53
54
55
56
57
58
59
60

ABSTRACT

Objective: The collaborative care model is recommended for depression in adults with a chronic physical health problem like diabetes. We sought to systematically assess the effect of collaborative care on depression and glycaemia in adults with co-morbid depression and diabetes to inform guidelines and practice.

Design: Systematic review and meta-analysis.

Data sources: We searched PubMed, Scopus, Cochrane Library, Cinahl, Health Source Nursing, Medline, PsychINFO and reference lists of retrieved articles published before August 2013.

Inclusion criteria: Randomised controlled trials (RCTs) on collaborative care (i.e. co-ordinated multi-disciplinary model of care) for depression that reported the effects on depression and glycaemic outcomes in adults with co-morbid clinically relevant depression and diabetes were eligible.

Data extraction and analysis: Data on the mean difference in depression and glycaemic outcomes were extracted and pooled using random effects meta-analysis.

Results: Seven RCTs included for review reported effects on depression outcomes in 1895 participants, and glycated haemoglobin (HbA1c) level in 1556 participants. Collaborative care significantly improved depression score (standardised mean difference was -0.32 [95% CI: -0.53 to -0.11]; I-squared=79.0%) and HbA1c level (weighted mean difference was -0.33% [95% CI: -0.66% to -0.00%]; I-squared=72.9%) compared with control conditions. Depression remission did not predict better glycaemic control across the studies.

Conclusions: Limited evidence from short-to-medium term RCTs predominately conducted in the United States suggests that collaborative care for depression significantly improves both depression and glycaemia outcomes, independently, in people with co-morbid depression and diabetes.

ARTICLE SUMMARY

Article focus

- To systematically assess the effect of collaborative care on depression and glycaemia in adults with co-morbid depression and diabetes.

Key messages

- Limited evidence from short-to-medium term RCTs predominately conducted in the United States suggests that collaborative care for depression significantly improves both depression and glycaemia outcomes.

Strengths and limitations of this study

- Key findings were based on a high-quality systematic review and meta-analysis level of evidence
- Since only a small number of short-to-medium term studies predominately conducted in the United States were included, the findings of this review may not be relevant to health care settings in other countries, requiring further research.

INTRODUCTION

Diabetes is currently ranked the 14th leading cause of global disease burden (assessed using a summary measure of healthy years of life lost due to premature death and years lived with disability), and has moved up several places in the rankings for leading causes since 1990 [1]. The International Diabetes Federation estimated that more than 371 million people (or 8.3% of the adult population worldwide) had diabetes in 2012 [2]. Major depression, currently ranked the 11th leading cause of global disease burden, has also moved up several places in the rankings for leading causes since 1990 [1]. Although rankings varied substantially across regions, health care practitioners in these countries need guidance to better deal with the rising burden of diabetes and depression.

Diabetes is a chronic physical health condition that is often co-morbid with clinically relevant symptoms of depression [3-5]. Practitioners should be aware that depression co-morbidity can significantly worsen the self-care [6], health [7-9] and economic burden of diabetes [10]. This suggests that effective management of depression in people with co-morbid diabetes could potentially reverse several of these adverse outcomes, resulting in better glycaemic control among other benefits.

Current National Institute for Health and Clinical Excellence (NICE) guidelines for depression in adults with a chronic physical health problem, like diabetes, recommend collaborative care in a 'stepped care framework' in which to organise health services [11]. Patients with inadequate response to one or more treatments are 'stepped up' from low intensity care to a more intensive form of management (including lifestyle, psychological and pharmacological therapies). Practitioners should consider collaborative care for patients with co-morbid diabetes and depression, since they typically need more intensive care.

Randomized controlled trial (RCT) evidence shows that collaborative care is more effective than usual care for improving depression outcomes at both short and longer terms in

American primary care settings [12]. Systematic reviews of RCTs have also confirmed that collaborative care is more effective than usual care for improving depression outcomes in people with co-morbid diabetes [13, 14], but there was a lack of consistent evidence for improving glucose control [13, 15]. However, the results of newly published RCTs suggest that collaborative care for depression also leads to significant improvements in glycaemic control [16, 17]. We therefore sought to systematically assess the total body of RCT evidence on collaborative care for depression in adults with co-morbid depression and diabetes to inform guidelines and practice.

METHODS

Search strategy

We searched PubMed, Scopus, Cochrane Library, Cinahl, Health Source Nursing, Medline, PsychINFO and reference lists of retrieved articles published before August 2013. Search syntaxes were developed in consultation with an experienced university research librarian taking into account a broad range of terms and phrases used in definitions of RCTs, collaborative care, depression and diabetes (full electronic search strategies for PubMed and Scopus databases; appendix page 1). Reference lists of potentially eligible articles were searched by hand to identify additional studies missed by our search strategy.

Study selection

Two reviewers (EA and JF) identified potentially relevant studies for inclusion by screening titles and/or abstracts of all citations identified with our database searches. A second screening was performed on the full text of these articles. Articles for RCTs on collaborative care (i.e. evidence showing that the intervention was a co-ordinated multi-disciplinary model

of care) for depression that reported the effects on both depression and glycaemic outcomes in adults were eligible. There were no language restrictions for articles.

Data extraction

Data extraction and quality assessment of included studies were performed and/or verified independently by three reviewers (EA, JF and PF). Discrepancies were resolved through discussion. Authors of relevant studies were contacted, where possible, for data that could not be extracted from the published articles.

Quality assessment

For methodology and quality assessment, a quality checklist was developed to identify potential sources of bias (table; appendix page 2). Quality items for RCTs reviewed were as follows (each worth 1.0 numerical point): 1) study eligibility criteria were adequately described, 2) randomization methodology was adequate (i.e., evidence suggesting “random” method was used to generate and implement random allocation sequence), 3) allocation concealment was adequate (i.e., evidence to suggest that a robust method was used for concealing the sequence of treatment allocation (e.g., independent IT or telephone service or sealed opaque envelopes only opened in front of the participant), 4) between-group were balanced at baseline for primary outcomes (i.e., evidence showing that groups were similar at the outset for primary outcomes), 5) between-group drop-out rates were balanced, and 6) intention to treat analysis was included.

Our quality item checklist was designed based on criteria for assessment of RCTs [18, 19] and allowed summed scores to range from 0 to 6 points, reflecting lowest to highest quality. Studies were considered ‘better quality’ if they received a score higher than 4, since that meant that they had most of our quality items.

Primary outcomes

Data on the mean difference in depression and glycated haemoglobin (HbA1c) outcomes between the treatment and control groups were extracted and pooled using random effects meta-analysis. In one study [16], the post-treatment means were derived from the within group changes and the control group standard deviation carried forward from the baseline values [20]. Standardised mean differences were calculated using Glass's Delta method.

Data synthesis

Three reviewers (EA, PF and JF) independently collated and/or verified extracted data to present a descriptive synthesis of important study characteristics and a quantitative synthesis of effect estimates.

Statistical methods

We pooled and weighted studies first using random effects meta-analysis models, and second using fixed effects models for verification [21]. Hb1Ac results were pooled to estimate the inverse variance weighted mean difference (WMD), including the DerSimonian and Laird 95% confidence interval (95% CI), between treatment and control groups.

In examining the effects of collaborative care treatment on depression scores, the standardised mean difference (SMD) from each RCT were pooled to produce an overall estimate of effect, and associated 95% CI, between treatment and control groups. We used meta-regression to test the hypothesis that SMD of the depression score is a predictor of the WMD of Hb1Ac.

For each meta-analysis model, the degree of heterogeneity in WMD or SMD was assessed by visual inspection, the *I*-squared statistic (moderate being < 50% [22]) and the χ^2 -test of

1
2
3 goodness of fit [23]. Where evidence of heterogeneity was observed, we checked data
4 extracted from individual outlier studies, qualitatively investigated reasons for their different
5 results, and explored the effects of study exclusion in sensitivity analyses.
6
7
8

9
10 We also used sensitivity analysis to investigate the robustness of the meta-analyses
11 models. We variously excluded lower quality studies (score of ≤ 4.0), one study conducted
12 outside the United States (Australia), studies that integrated diabetes care, studies which
13 considered lifestyle risk factors, and studies of less than one-year duration. Publication bias,
14 which reflects the tendency for smaller studies to be published in the literature only when
15 findings are positive, was assessed visually using funnel plots [24]. All calculations were
16 performed in Stata version 12 (StataCorp, College Station, TX, USA) using the 'metan',
17 'metareg' and 'metafunnel' commands. A two-tailed P -value < 0.05 was considered
18 statistically significant throughout the analyses.
19
20
21
22
23
24
25
26
27
28
29
30
31

32 RESULTS

33
34 Figure 1 presents a flowchart summarizing identification of potentially relevant studies, and
35 those included and excluded. Our search strategy identified 264 citations after duplicates
36 were removed. Of these, 246 citations were excluded after the first screening of titles and/or
37 abstracts for inclusion and exclusion criteria, leaving 18 citations for a second full text
38 screening. After further assessment, 11 citations were excluded for reasons listed in figure 1
39 leaving seven RCTs for final inclusion in the systematic review. Most studies were excluded
40 for inadequate study design or intervention (i.e. did not qualify as collaborative care model),
41 and a couple of studies were excluded for being redundant duplicate citations and for
42 incomplete data available for extraction (list of excluded citations and reasons; appendix
43 pages 3-4).
44
45
46
47
48
49
50
51
52
53
54
55
56
57
58
59
60

<< Figure 1 >>

Descriptive data synthesis

Table 1 presents study characteristics of seven RCTs included for review, which were published between 2004 and 2013. All studies except one [25] were conducted in the United States. Major inclusion criteria were various case definitions of diabetes in five studies [16, 26-29], diabetes and/or coronary heart disease (CHD) in two studies [17, 25], and co-morbid clinically relevant depression in all studies. Major exclusion criteria were cognitive impairment in four studies [16, 17, 28, 29], co-morbid psychiatric disorder or suicidal ideation in four studies [17, 27-29], alcohol problems in two studies [27, 29], and living in residential care in two studies [17, 25], among others. The sample sizes ranged from 58 to 417, resulting in a total of 1895 participants for depression outcomes and 1556 participants for HbA1c outcome across studies. Mean age of the samples ranged from 54 to 71 years. All of the study samples contained both male and female participants. Baseline mean depression scores ranged from 15.6 to 19.7 by the CES-D 20 [26], from 9.9 to 11.6 by the PHQ-9 [16, 25], and from 1.4 to 1.7 by the SCL-20 [17, 27-29]. Baseline mean HbA1c levels ranged from 6.9 to 9.1%. Defining features of collaborative care models investigated were a case manager/officer (usually a nurse or non-physician mental health worker for co-ordination of care) with proactive follow-ups in all studies, a structured management plan delivered within a stepped care framework and relapse prevention in four studies [17, 27-29], an integrated diabetes care program in three studies [16, 17, 26], and consideration for lifestyle risk factors in two studies [17, 25]. Control conditions were “usual care” in four studies [16, 25, 26, 29], whereas usual care was enhanced in the three other studies [17, 27, 28]. Trial durations ranged from 12 to 52 weeks. Primary outcomes were depression score assessed by the CES-D 20 in one study [26], by the PHQ-9 in two studies [16, 25], and by the SCL-20 in four studies

[17, 27-29]; and glycaemic control by HbA1c in all of the studies. Mean quality scores ranged from 3.5 to 5.5, and all but three studies [25, 26, 29] received a score of 4.5 or higher.

<< Table 1 >>

Quantitative data synthesis

Effect of collaborative care on depression

Figure 2 presents the SMD in depression outcomes after collaborative care between the treatment and control groups. Collaborative care significantly improved standardised depression outcomes compared with control conditions (pooled SMD was -0.32 [95% CI: -0.53 to -0.11]). There was statistical heterogeneity between studies (I-squared=79.0%, $P<0.001$) that was mostly a result of variation in the degree of benefit favouring collaborative care in all but one study [27], which had significant between-group differences in mean depression scores at baseline. Correcting for these differences substantially changed the SMD for that study (from 0.00 [95% CI: -0.20 to 0.20] to -0.60 [95% CI: -0.81 to -0.39]) in a sensitivity analysis. In addition, the sensitivity analyses presented in table 2 shows that the pooled SMD was substantially changed only after exclusion of lower quality studies (decreased to -0.17 [95% CI: -0.35 to 0.00]). A funnel plot was produced and confirmed widespread heterogeneity of effect estimates between studies, but did not suggest any publication bias (appendix page 5).

<< Figure 2 >>

<< Table 2 >>

Effect of collaborative care on HbA1c

1
2
3 Figure 3 presents the WMD in HbA1c level after collaborative care between the treatment
4 and control groups. Collaborative care significantly reduced HbA1c level compared with
5 control conditions (pooled WMD was -0.33% [95% CI: -0.66% to -0.00%]). There was
6 statistical heterogeneity between studies (I-squared=72.9%, P=0.001) that was mostly a result
7 of variation in the degree of benefit favouring collaborative care in all but two studies [28,
8 29]. The sensitivity analyses presented in table 3 shows that the pooled WMD was slightly
9 decreased in the fixed effect model (-0.21 [95% CI: -0.37 to -0.05]), but no longer
10 statistically significant after each of the various studies was excluded. This was particularly
11 so after exclusion of three studies that integrated diabetes care (decreased to -0.07 [95% CI: -
12 0.35 to 0.21]). A funnel plot was produced and confirmed widespread heterogeneity of effect
13 estimates between studies, but did not suggest any publication bias (appendix page 6).
14
15
16
17
18
19
20
21
22
23
24
25
26
27
28
29

30 << Figure 3 >>

31 << Table 3 >>
32
33
34
35

36 Effect of depression remission on HbA1c

37
38 Figure 4 presents a scatter plot displaying the association between the SMD in depression
39 outcomes and the WMD in HbA1c values in each study. Results of a meta-regression model
40 suggest that the SMD for depression scores failed to predict the WMD in HbA1c values
41 across studies (P=0.828, coefficient was 0.19 [95% CI: -1.93 to 2.31]).
42
43
44
45
46
47
48
49

50 << Figure 4 >>
51
52
53

54 DISCUSSION

55 Summary of evidence 56 57 58 59 60

1
2
3 Based on limited evidence from short-to-medium term RCTs predominately conducted in
4 the United States, our results suggest that collaborative care for depression significantly
5 improves both depression and glycaemia outcomes in people with co-morbid depression and
6 diabetes. Furthermore, we found evidence from a sensitivity analysis that future high-quality
7 RCTs [30] will likely strengthen rather than weaken this evidence base. The size of the effect
8 of collaborative care on depression and HbA1c outcomes that can be expected in practice is
9 small-to-moderate, but comparable with pharmacological, psychological and behavioural
10 therapies alone [13, 14, 31, 32], and likely to be clinically relevant. For instance, several of
11 the RCTs we reviewed have also shown that collaborative care for depression in people with
12 co-morbid diabetes is more effective than usual care for improving functional health
13 outcomes [33] and were cost effective [34, 35], consistent with previous economic modelling
14 [36]. In addition, a recent meta-analysis found a positive dose-response trend between HbA1c
15 level and adverse cardiovascular outcomes [37]. This suggests that improvements in
16 glycaemic control from collaborative care for depression could theoretically protect patients
17 with co-morbid diabetes against future cardiovascular risk.

18
19
20
21
22
23
24
25
26
27
28
29
30
31
32
33
34
35
36
37
38
39
40
41
42
43
44
45
46
47
48
49
50
51
52
53
54
55
56
57
58
59
60
In contrast, we found no evidence to suggest that improved depression outcomes results in
better glycaemic control (lower HbA1c values) among people with co-morbid diabetes. This
null finding for reversibility of the effect of depression on glycaemia weakens the evidence
base for causality in terms of worsening the burden of diabetes. Alternatively, collaborative
care for depression may improve glycaemia in people with diabetes by increasing self-
management, independent of the depression prognosis. For example, collaborative care for
depression [17] was more effective than usual care for improving blood pressure and blood
glucose self-monitoring rates [38]. Quality improvement strategies for diabetes care that
promote glucose self-monitoring among patients can significantly improve HbA1c level
(SMD was 0.57% [0.31% to 0.83]) [39]. Indeed, evidence from our sensitivity analysis

1
2
3 showed that the effect of collaborative care on HbA1c was almost entirely confined to the
4 three studies that integrated diabetes care within the collaborative care model [16, 17, 26].
5
6
7 Second, none of the RCTs we reviewed properly integrated lifestyle intervention within the
8 collaborative care. In high-income countries like the United States and Australia, depression
9 is associated with overweight or obesity, physical inactivity, smoking cigarettes and drinking
10 excessive amounts of sugar-sweetened and alcoholic beverages [40, 41], all of which are
11 well-established lifestyle risk factors for diabetes. Indeed, there is international consensus
12 supporting the effectiveness of lifestyle intervention in the prevention and management of
13 type 2 diabetes [42]. In addition, previous systematic reviews of RCTs have shown that
14 exercise (an integral component of lifestyle intervention) is effective for improving both
15 depression score (SMD was -0.82 [95% CI: -1.12 to -0.51]) and HbA1c level (WMD was -
16 0.67% [95% CI: -0.84 to -0.49%]) [43, 44], and the size of these effects are substantially
17 larger than what we found for collaborative care for depression. There is now sufficient
18 evidence to suggest that diabetes care and lifestyle intervention integrated within
19 collaborative care for depression would be the most effective way to manage care for co-
20 morbid depression and diabetes.
21
22
23
24
25
26
27
28
29
30
31
32
33
34
35
36
37
38
39
40

41 **Limitations**

42
43 Several limitations require further consideration. Since only a small number of short-to-
44 medium term studies predominately conducted in the United States were included, the
45 findings of this review may not be relevant to health care settings in other countries, requiring
46 further research. In particular, health care systems in most countries are not properly set up to
47 optimize the co-ordination between practitioners [45]. Integration of therapies including
48 collaborative care, diabetes care and lifestyle intervention is required for managing co-morbid
49 depression diabetes. Finally, reviewer-level limitations include incomplete retrieval of
50
51
52
53
54
55
56
57
58
59
60

1
2
3 information for several of the 11 citations excluded, and the existence of other relevant
4
5 studies not identified with our search strategy resulting in bias. However, the results and
6
7 conclusions reported in most of the excluded studies were in line with those reported here,
8
9 search strategy bias was unlikely.
10

11 12 13 14 **Conclusions**

15
16 Limited evidence from short-to-medium term RCTs predominately conducted in the
17
18 United States suggest that collaborative care for depression significantly improves both
19
20 depression and glycaemia outcomes, independently, in people with co-morbid depression and
21
22 diabetes. Future research should investigate the effectiveness, feasibility and appropriateness
23
24 of collaborative care integration with diabetes care and lifestyle intervention for co-morbid
25
26 depression and diabetes in routine clinical practice in specific health care settings worldwide.
27
28
29
30
31
32
33
34
35
36
37
38
39
40
41
42
43
44
45
46
47
48
49
50
51
52
53
54
55
56
57
58
59
60

ACKNOWLEDGMENTS

Authorship order is according to percentage contribution. EA is guarantor of the paper, taking responsibility for the integrity of the work as a whole, from inception to published article. EA conceived and designed the review, identified studies for inclusion, extracted and interpreted data, and drafted the article. PF analysed and interpreted data, and revised the article. JF extracted and interpreted data, and revised the article. All authors approved the final completed article. We are grateful to Mrs Rohini Patil for her work on developing and conducting the electronic database searches.

CONTRIBUTORSHIP STATEMENT

Authorship order is according to percentage contribution. EA is guarantor of the paper, taking responsibility for the integrity of the work as a whole, from inception to published article. EA conceived and designed the review, identified studies for inclusion, extracted and interpreted data, and drafted the article. PF analysed and interpreted data, and revised the article. JF extracted and interpreted data, and revised the article. All authors approved the final completed article. We are grateful to Mrs Rohini Patil for her work on developing and conducting the electronic database searches.

COMPETING INTERESTS

EA has received honoraria for speaking at events for Eli Lilly Australia Pty Ltd (Lilly).

DATA SHARING STATEMENT

Not applicable

REFERENCES

1. Murray CJ, Vos T, Lozano R, *et al.* Disability-adjusted life years (DALYs) for 291 diseases and injuries in 21 regions, 1990-2010: a systematic analysis for the Global Burden of Disease Study 2010. *Lancet*. 2012 Dec 15;380(9859):2197-223.
2. International Diabetes Federation. IDF Diabetes Atlas. 5th Edn. © 2013 International Diabetes Federation, 2013.
3. Atlantis E. Excess burden of type 1 and type 2 diabetes due to psychopathology. *J Affect Disord*. 2012 Oct;142 Suppl:S36-41.
4. Lin EHB, Von Korff M, Consortium WWS. Mental disorders among persons with diabetes-Results from the World Mental Health Surveys. *J Psychosom Res*. 2008 Dec;65(6):571-80.
5. Moussavi S, Chatterji S, Verdes E, *et al.* Depression, chronic diseases, and decrements in health: results from the World Health Surveys. *Lancet*. 2007 Sep 8;370(9590):851-8.
6. Lin EHB, Katon W, Von Korff M, *et al.* Relationship of depression and diabetes self-care, medication adherence, and preventive care. *Diabetes care*. 2004 Sep;27(9):2154-60.
7. Atlantis E, Goldney RD, Eckert KA, Taylor AW, Phillips P. Trends in health-related quality of life and health service use associated with comorbid diabetes and major depression in South Australia, 1998-2008. *Social psychiatry and psychiatric epidemiology*. 2012 Jun;47(6):871-7.
8. Lin EHB, Rutter CM, Katon W, *et al.* Depression and Advanced Complications of Diabetes - A prospective cohort study. *Diabetes care*. 2010 Feb;33(2):264-9.

- 1
2
3 9. Park M, Katon WJ, Wolf FM. Depression and risk of mortality in individuals with
4 diabetes: a meta-analysis and systematic review. *General hospital psychiatry*. 2013
5 5//;35(3):217-25.
6
7
- 8
9
10 10. Molosankwe I, Patel A, Gagliardino JJ, Knapp M, McDaid D. Economic aspects of
11 the association between diabetes and depression: A systematic review. *Journal of Affective*
12 *Disorders*. 2012 Oct;142:S42-S55.
13
14
- 15
16
17 11. National Institute for Health and Clinical Excellence. NICE Clinical Guideline 91.
18 Depression in adults with a chronic physical health problem. Treatment and management.
19 London2009.
20
21
- 22
23
24 12. Gilbody S, Bower P, Fletcher J, Richards D, Sutton AJ. Collaborative care for
25 depression - A cumulative meta-analysis and review of longer-term outcomes. *Arch Intern*
26 *Med*. 2006 Nov 27;166(21):2314-21.
27
28
- 29
30
31 13. Van der Feltz-Cornelis CM, Nuyen J, Stoop C, *et al*. Effect of interventions for major
32 depressive disorder and significant depressive symptoms in patients with diabetes mellitus: a
33 systematic review and meta-analysis. *General hospital psychiatry*. 2010 Jul-Aug;32(4):380-
34 95.
35
36
- 37
38
39 14. Ekers D, Murphy R, Archer J, *et al*. Nurse-delivered collaborative care for depression
40 and long-term physical conditions: A systematic review and meta-analysis. *Journal of*
41 *Affective Disorders*. 2013 Jul;149(1-3):14-22.
42
43
- 44
45
46 15. Huang Y, Wei X, Wu T, Chen R, Guo A. Collaborative care for patients with
47 depression and diabetes mellitus: a systematic review and meta-analysis. *BMC Psychiatry*.
48 2013;13:260.
49
50
51
52
53
54
55
56
57
58
59
60

16. Bogner HR, Morales KH, de Vries HF, Cappola AR. Integrated management of type 2 diabetes mellitus and depression treatment to improve medication adherence: a randomized controlled trial. *Annals of family medicine*. 2012 2012;10(1):15-22.
17. Katon WJ, Lin EH, Von Korff M, *et al*. Collaborative care for patients with depression and chronic illnesses. *The New England journal of medicine*. 2010 Dec 30;363(27):2611-20.
18. CRD's guidance for undertaking reviews in health care. © Centre for Reviews and Dissemination University of York 2008 Published by CRD 2009.
19. Schulz KF, Altman DG, Moher D. CONSORT 2010 statement: updated guidelines for reporting parallel group randomised trials. *BMJ*. 2010;340:c332.
20. Higgins JPT, Green S. *Cochrane Handbook for Systematic Reviews of Interventions* Version 5.1.0 [updated March 2011]. The Cochrane Collaboration, 2011 Available from www.cochrane-handbook.org [serial on the Internet]. editors.
21. DerSimonian R, Laird N. Meta-analysis in clinical trials. *Control Clin Trials*. 1986 Sep;7(3):177-88.
22. Higgins JP, Thompson SG, Deeks JJ, Altman DG. Measuring inconsistency in meta-analyses. *BMJ*. 2003 Sep 6;327(7414):557-60.
23. Higgins JP, Thompson SG. Quantifying heterogeneity in a meta-analysis. *Stat Med*. 2002 Jun 15;21(11):1539-58.
24. Egger M, Davey Smith G, Schneider M, Minder C. Bias in meta-analysis detected by a simple, graphical test. *BMJ*. 1997 Sep 13;315(7109):629-34.
25. Morgan MAJ, Coates MJ, Dunbar JA, *et al*. The TrueBlue model of collaborative care using practice nurses as case managers for depression alongside diabetes or heart disease: A randomised trial. *BMJ Open*. 2013 //;3(1).

- 1
2
3 26. Bogner HR, de Vries HF. Integrating type 2 diabetes mellitus and depression
4 treatment among African Americans: a randomized controlled pilot trial. *The Diabetes*
5 *educator*. 2010 Mar-Apr;36(2):284-92.
6
7
8
9
10 27. Ell K, Katon W, Xie B, *et al*. Collaborative care management of major depression
11 among low-income, predominantly hispanic subjects with diabetes: A randomized controlled
12 trial. *Diabetes care*. 2010 April;33(4):706-13.
13
14
15
16 28. Katon WJ, Korff M, Lin EH, *et al*. The Pathways Study: a randomized trial of
17 collaborative care in patients with diabetes and depression. *Archives of general psychiatry*
18 [serial on the Internet]. 2004; 61(10): Available from:
19 <http://onlinelibrary.wiley.com/o/cochrane/clcentral/articles/912/CN-00491912/frame.html>.
20
21
22
23
24
25 29. Williams Jr JW, Katon W, Lin EHB, *et al*. The effectiveness of depression care
26 management on diabetes-related outcomes in older patients. *Annals of Internal Medicine*.
27 2004 15 Jun;140(12):1015-24+I-51.
28
29
30
31
32 30. Johnson JA, Al Sayah F, Wozniak L, *et al*. Controlled trial of a collaborative primary
33 care team model for patients with diabetes and depression: Rationale and design for a
34 comprehensive evaluation. *BMC health services research*. 2012;12:258-.
35
36
37
38
39 31. Baumeister H, Hutter N, Bengel J. Psychological and pharmacological interventions
40 for depression in patients with diabetes mellitus and depression. *The Cochrane database of*
41 *systematic reviews*. 2012;12:CD008381.
42
43
44
45
46 32. Avery L, Flynn D, van Wersch A, Sniehotta FF, Trenell MI. Changing physical
47 activity behavior in type 2 diabetes: a systematic review and meta-analysis of behavioral
48 interventions. *Diabetes care*. 2012 Dec;35(12):2681-9.
49
50
51
52
53
54
55
56
57
58
59
60

- 1
2
3 33. Von Korff M, Katon WJ, Lin EH, *et al.* Functional outcomes of multi-condition
4 collaborative care and successful ageing: results of randomised trial. *BMJ (Clinical research*
5 *ed)*. 2011;343:d6612.
6
7
8
9
10 34. Hay JW, Katon WJ, Ell K, Lee PJ, Guterman JJ. Cost-effectiveness analysis of
11 collaborative care management of major depression among low-income, predominantly
12 Hispanics with diabetes. *Value in health : the journal of the International Society for*
13 *Pharmacoeconomics and Outcomes Research*. 2012 Mar-Apr;15(2):249-54.
14
15
16
17
18 35. Katon W, Russo J, Lin EHB, *et al.* Cost-effectiveness of a multicondition
19 collaborative care intervention. *Archives of General Psychiatry*. 2012 May;69(5):506-14.
20
21
22
23
24 36. Jacob V, Chattopadhyay SK, Sipe TA, *et al.* Economics of collaborative care for
25 management of depressive disorders: a community guide systematic review. *American*
26 *journal of preventive medicine*. 2012 May;42(5):539-49.
27
28
29
30 37. Zhang Y, Hu G, Yuan Z, Chen L. Glycosylated hemoglobin in relationship to
31 cardiovascular outcomes and death in patients with type 2 diabetes: a systematic review and
32 meta-analysis. *PloS one*. 2012;7(8):e42551.
33
34
35
36
37 38. Lin EH, Von Korff M, Ciechanowski P, *et al.* Treatment adjustment and medication
38 adherence for complex patients with diabetes, heart disease, and depression: a randomized
39 controlled trial. *Annals of Family Medicine*. 2012;10(1):6-14.
40
41
42
43 39. Tricco AC, Ivers NM, Grimshaw JM, *et al.* Effectiveness of quality improvement
44 strategies on the management of diabetes: a systematic review and meta-analysis. *Lancet*.
45 2012 Jun 16;379(9833):2252-61.
46
47
48
49 40. Strine TW, Mokdad AH, Dube SR, *et al.* The association of depression and anxiety
50 with obesity and unhealthy behaviors among community-dwelling US adults. *Gen Hosp*
51 *Psychiatry*. 2008 Mar-Apr;30(2):127-37.
52
53
54
55
56
57
58
59
60

- 1
2
3
4
5
6
7
8
9
10
11
12
13
14
15
16
17
18
19
20
21
22
23
24
25
26
27
28
29
30
31
32
33
34
35
36
37
38
39
40
41
42
43
44
45
46
47
48
49
50
51
52
53
54
55
56
57
58
59
60
41. Shi Z, Taylor AW, Wittert G, Goldney R, Gill TK. Soft drink consumption and mental health problems among adults in Australia. *Public Health Nutr.* 2010 Jul;13(7):1073-9.
42. International Diabetes Federation, Clinical Guidelines Task Force. Global Guideline for Type 2 Diabetes. © International Diabetes Federation, 2012.
43. Rimer J, Dwan K, Lawlor DA, *et al.* Exercise for depression. *The Cochrane database of systematic reviews.* 2012;7:CD004366.
44. Umpierre D, Ribeiro PA, Kramer CK, *et al.* Physical activity advice only or structured exercise training and association with HbA1c levels in type 2 diabetes: a systematic review and meta-analysis. *JAMA : the journal of the American Medical Association.* 2011 May 4;305(17):1790-9.
45. Roberts RG, Gask L, Arndt B, *et al.* Depression and diabetes: The role and impact of models of health care systems. *Journal of Affective Disorders.* 2012;142:S80-8.

1
2
3
4
5
6
7
8
9
10
11
12
13
14
15
16
17
18
19
20
21
22
23
24
25
26
27
28
29
30
31
32
33
34
35
36
37
38
39
40
41
42
43
44
45
46
47
48
49
50
51
52
53
54
55
56
57
58
59
60

For peer review only

TABLE 2: Characteristics of randomised controlled trials reviewed

adjacent.....continued →

Study identification	Country	Sample size	Population		Men (%); Mean age (years)	Baseline mean depression score		Baseline mean HbA1c (%)	
			Major inclusion criteria (all)	Major exclusion criteria (any)		Treated	Controls	Treated	Controls
Bogner et al, 2010 ²⁶	United States	58	Aged ≥50 years, recent HbA1c >7 or an oral hypoglycaemic prescription within past year, diagnosed depression or an antidepressant prescription within past year	None specified	16; 60	15.6	19.7	7.3	7.3
Bogner et al, 2012 ¹⁶	United States	180	Aged ≥30 years, diagnosis of type 2 diabetes and current oral hypoglycaemic prescription, current antidepressant prescription	No informed consent, cognitive impairment (Mini-Mental State Examination <21), residence in care facility providing medications, unwillingness or inability to use the Medication Event Monitoring System	32; 57	10.6	9.9	7.2	7.0
Ell et al, 2010 ^{27*}	United States	387	Aged ≥18 years, "with diabetes", one of two cardinal depressive symptoms most days and depression score ≥10 by the PHQ-9, informed consent	Acute suicidal ideation, score of ≥8 by the Alcohol Use Disorders Identification Test, inability to speak Spanish or English	18; 54	1.7	1.4	9.0	9.1
Katon et al, 2004 ^{28*}	United States	329	Diabetes (by registry), depression score of ≥10 by the PHQ-9 at first screening and score of ≥1.1 by the SCL-90 at second telephone screening, ambulatory, English speaking, adequate hearing for telephone interview, planned continued enrolment in the clinic during the next year	Currently in care of psychiatrist, diagnosed bipolar disorder or schizophrenia, current antipsychotic or mood stabilizer medications, symptoms of dementia	35; 58	1.7	1.6	8.0	8.0
Katon et al, 2010 ¹⁷	United States	214	Diabetes, coronary heart disease or both (by registry), depression score of ≥3 by the PHQ-2 and ≥10 by the PHQ-9, ambulatory, spoke English, and planned be enrolled in the Health Maintenance Organization for 12 months	Terminal illness, residence in long-term facility, severe hearing loss, planned bariatric surgery within three months, pregnancy or breast feeding, ongoing psychiatric care, bipolar disorder or schizophrenia, current antipsychotic or mood stabilizer medications, symptoms of dementia	48; 57	1.7	1.7	8.1	8.0
Morgan et al, 2013 ²⁵	Australia	156 (glycaemia); 310 (depression)	Type 2 diabetes, coronary heart disease or both (by registry), depression score of ≥5 by the PHQ-9, informed consent	Aged <18 years, in residential care	55; 68	10.7	11.6	7.0	6.9

For peer review only - <http://bmjopen.bmj.com/site/about/guidelines.xhtml>

1
2
3
4
5
6
7
8
9
10
11
12
13
14
15
16
17
18
19
20
21
22
23
24
25
26
27
28
29
30
31
32
33
34
35
36
37
38
39
40
41
42
43
44
45
46
47
48
49

25

Williams et al, 2004 ^{29*}	United States	232 (glycaemia); 417 (depression)	Diagnosed or treated diabetes or high blood sugar in past three years by self-report, current major depression or dysthymic disorder by structured clinical interview according to DSM-IV	Current drinking problem (score of ≥2 by the CAGE questionnaire), history of bipolar disorder or psychosis, ongoing psychiatric care, or severe cognitive impairment (score of <3 by questionnaire)	47; 71	1.7	1.7	7.3	7.3
-------------------------------------	---------------	-----------------------------------	---	---	--------	-----	-----	-----	-----

Abbreviations: HbA1c, glycated haemoglobin; CES-D, Center for Epidemiological Studies Depression scale; PHQ, Patient Health Questionnaire; SCL, Symptom Checklist; DSM-IV, Diagnostic and Statistical Manual of Mental Disorders, fourth edition
 *Raw data was provided by the author

For peer review only

→ adjacent.....continued

Treatments	Control conditions	Trial duration (weeks)	Outcomes (assessments)	Quality score (out of 6)
"Integrated care"; consisted of supervised case manager, patient-centred care, education and integrated care for depression and diabetes; three 30 min in person and two 15 min telephone follow-up sessions over four weeks	"Usual care"; and study assessments	12	Glycaemia (HbA1c); depression score (CES-D 20)	4.0
"Integrated care"; consisted of supervised case manager, patient-centred care, education and integrated care for depression and diabetes; three 30 min in person and two 15 min telephone follow-up sessions over three months	"Usual care"; and study assessments	12	Glycaemia (HbA1c); depression score (PHQ-9)	5.0
"Collaborative care"; consisted of supervised nurse case manager, patient-centred care, problem solving therapy, self-monitoring education, and coordination of care and services for depression and diabetes within a stepped-care framework; monthly telephone symptom monitoring, treatment maintenance and relapse prevention up to 12 months	"Enhanced usual care"; and patient and family-focused depression education pamphlets	52	Glycaemia (HbA1c); depression score (SCL-20)	5.5
"Collaborative care"; consisted of supervised nurse case manager, patient-centred care (initial choice of antidepressant or problem solving therapy), within a stepped-care framework; initial one hour visit, followed by twice monthly half-hour follow-ups (telephone or in-person) up to 12 weeks and referral to speciality care thereafter if necessary	"Usual care"; and advice to consult their physician for depression care	26	Glycaemia (HbA1c); depression score (SCL-20)	4.5
"Collaborative care"; consisted of supervised nurse case manager, "treat-to-target program" integrated care for specific conditions, within a stepped-care framework, motivational problem solving and goal setting for self-care (including exercise, and "The Depression Helpbook", video and written material); structured visits every two to three weeks, and maintenance plan once targeted levels were achieved including telephone follow-ups every four weeks	"Enhanced usual care"; patients could self-refer to mental health care or be referred by primary care physicians at the clinic; and study assessments	52	Glycaemia (HbA1c); depression score (SCL-20)	5.0
"Collaborative care"; consisted of collaborative care trained nurse case manager, 45 min nurse consult every three months followed (for assessment of lifestyle, physical and biochemical risk factors, and referrals, self-care of depression and setting personal goals for review and discussion of educational resources), followed by a 15 min consult with their usual general practitioner	"Usual care"; baseline data collected retrospectively	26	Glycaemia (HbA1c); depression score (PHQ-9)	3.5

1
2
3
4
5
6
7
8
9
10
11
12
13
14
15
16
17
18
19
20
21
22
23
24
25
26
27
28
29
30
31
32
33
34
35
36
37
38
39
40
41
42
43
44
45
46
47
48
49

Collaborative care; consisted of trained nurse or psychologist case manager, patient-centred care, problem solving therapy, 20 min educational video tape and written material on late-life depression, and coordination of care and services for depression within a stepped-care framework; monthly telephone symptom monitoring, treatment maintenance and relapse prevention up to 12 months; diabetes care not specifically enhanced

"Usual care"; and study assessments

52

Glycaemia (HbA1c); depression score (SCL-20)

4.0

For peer review only

TABLE 2: Sensitivity analysis of randomized controlled trials of collaborative care → depression score outcome meta-analysis

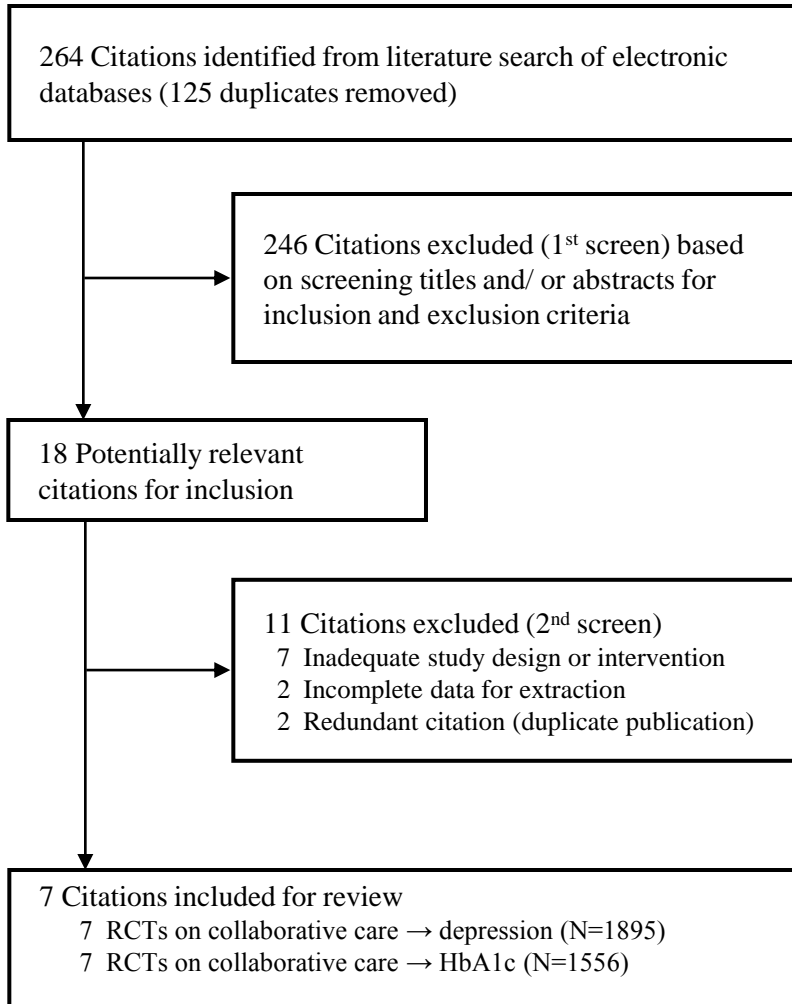
	N studies	N sample	SMD	(95% confidence interval)	P-value for heterogeneity
Fixed effects model	7	1895	-0.31	(-0.40 to -0.22)	<0.001
Exclusion of 3 lower quality studies (score ≤4.0)	4	1110	-0.17	(-0.35 to 0.00)	0.101
Exclusion of 1 study outside the United States (Australia)	6	1585	-0.32	(-0.57 to -0.07)	<0.001
Exclusion of 3 studies that integrated diabetes care	4	1443	-0.30	(-0.62 to 0.01)	<0.001
Exclusion of 2 studies that considered lifestyle risk factors	5	1371	-0.30	(-0.59 to 0.00)	<0.001
Exclusion of 4 studies less than 1 year duration	3	1018	-0.34	(-0.68 to 0.01)	<0.001

Abbreviations: N, number; SMD, standardized mean difference

TABLE 3: Sensitivity analysis of randomised controlled trials of collaborative care → HbA1c outcome meta-analysis

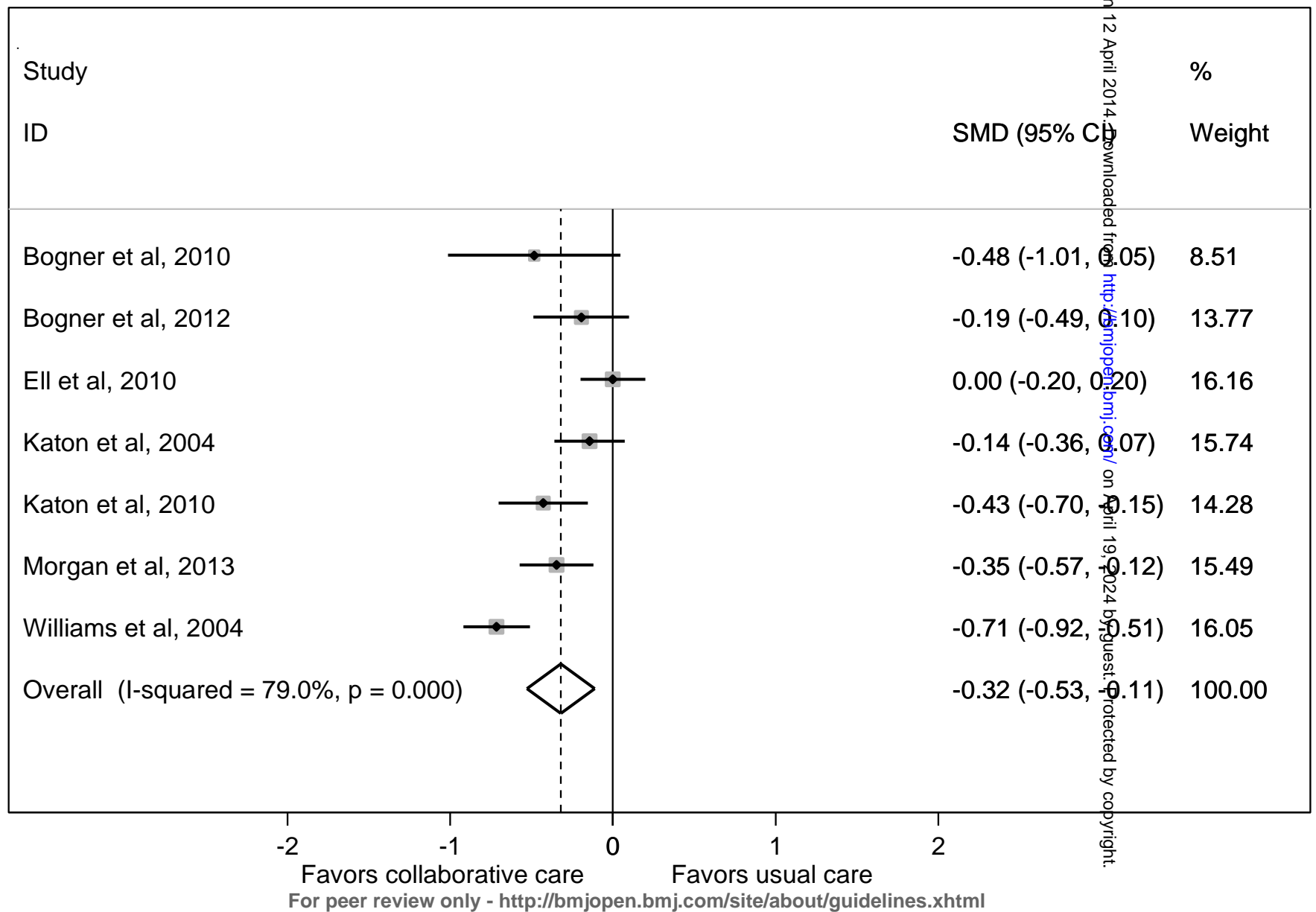
	N studies	N sample	WMD	(95% confidence interval)	P-value for heterogeneity
Fixed effects model	7	1556	-0.21	(-0.37 to -0.05)	0.001
Exclusion of 3 lower quality studies (score ≤4.0)	4	1110	-0.32	(-0.81 to 0.17)	0.001
Exclusion of 1 study outside the United States (Australia)	6	1400	-0.31	(-0.68 to 0.07)	0.001
Exclusion of 3 studies that integrated diabetes care	4	1104	-0.07	(-0.35 to 0.21)	0.086
Exclusion of 2 studies that considered lifestyle risk factors	5	1186	-0.27	(-0.71 to 0.16)	0.002
Exclusion of 4 studies less than 1 year duration	3	833	-0.18	(-0.48 to 0.11)	0.189

Abbreviations: N, number; WMD, weighted mean difference



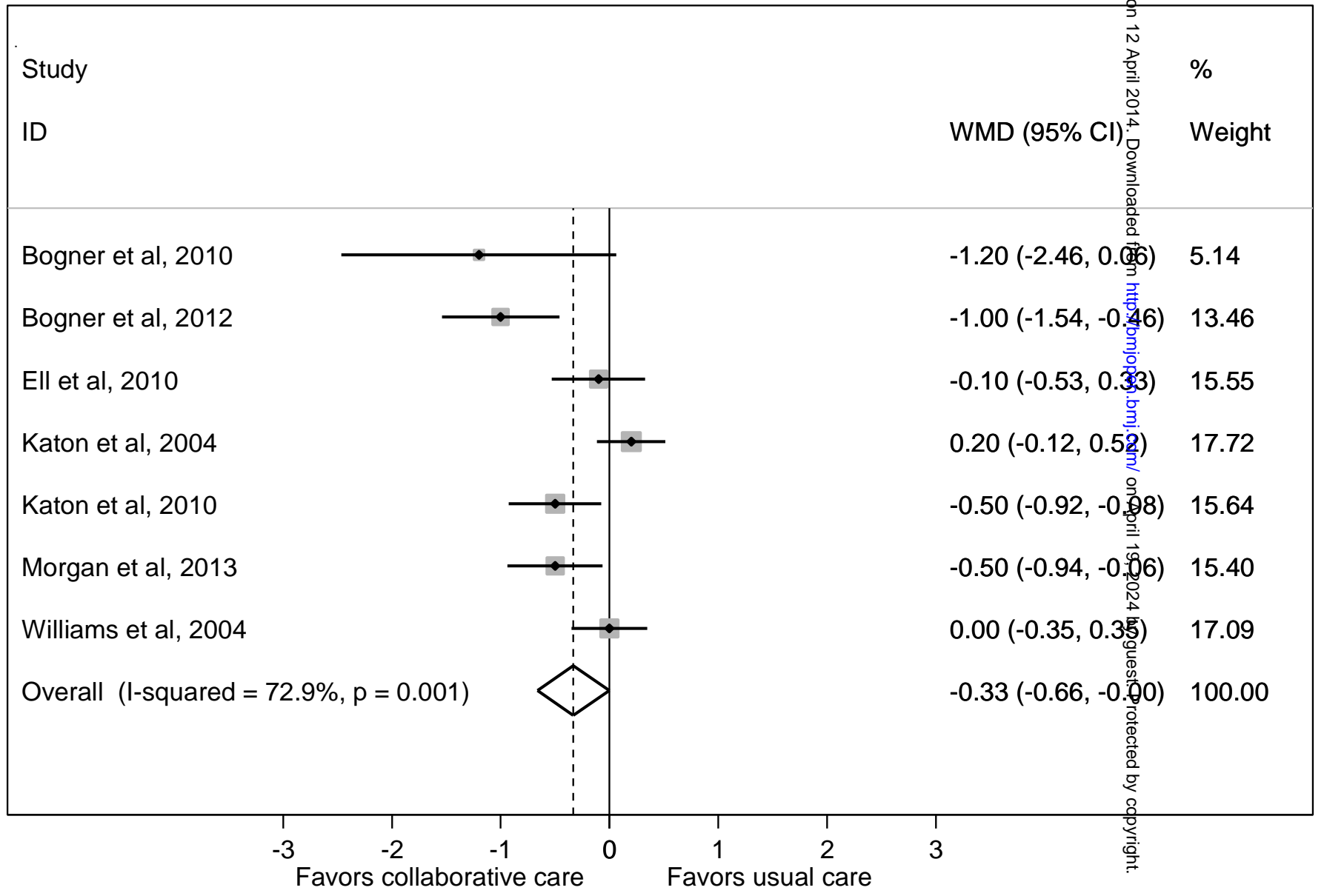
1
2
3
4
5
6
7
8
9
10
11
12
13
14
15
16
17
18
19
20
21
22
23
24
25
26
27
28
29
30
31
32
33
34
35
36
37
38
39
40
41
42

13-004706 on 12 April 2014. Downloaded from <http://bmjopen.bmj.com/> on April 19, 2024 by guest. Protected by copyright.



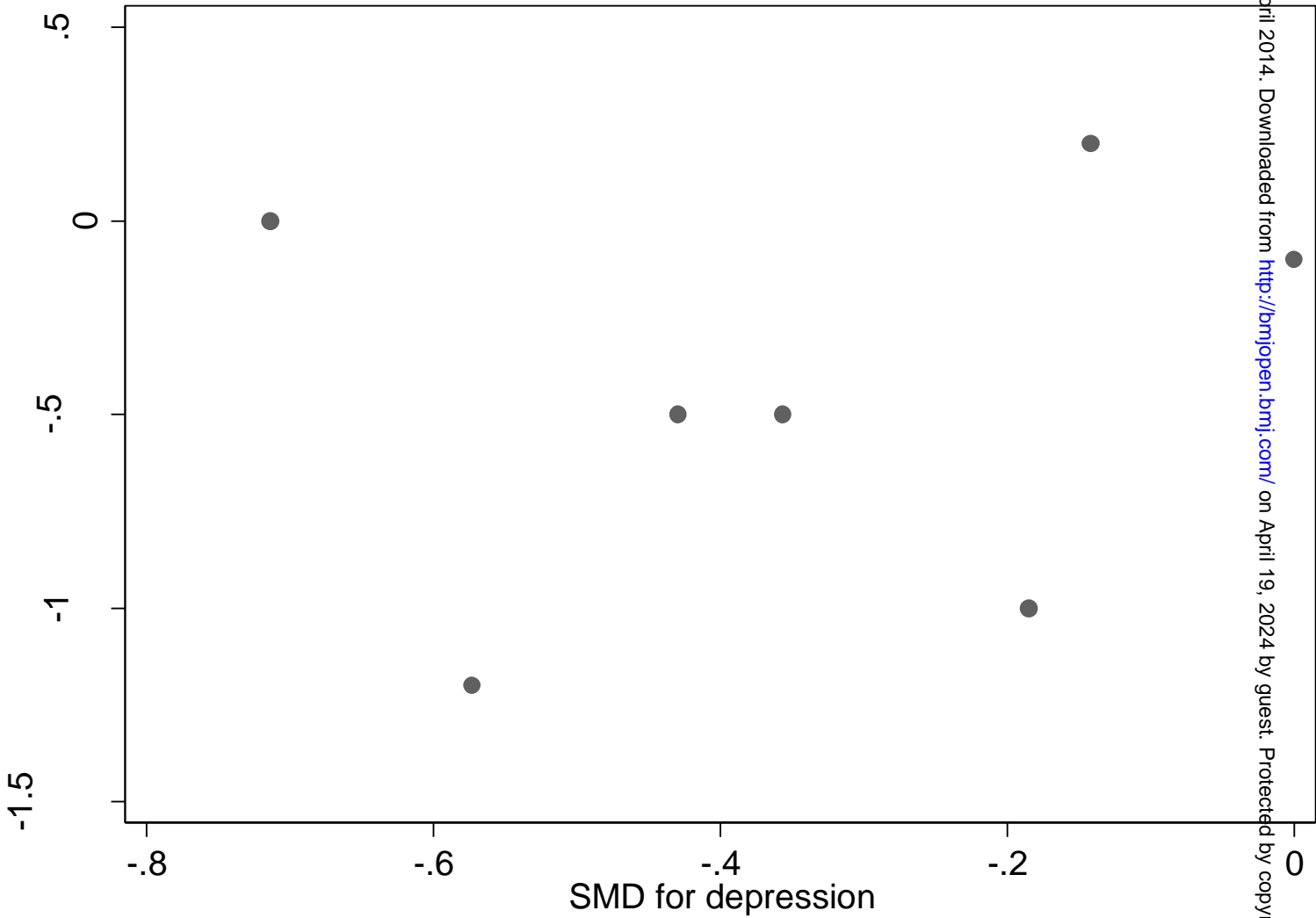
1
2
3
4
5
6
7
8
9
10
11
12
13
14
15
16
17
18
19
20
21
22
23
24
25
26
27
28
29
30
31
32
33
34
35
36
37
38
39
40
41
42
43

13-004706 on 12 April 2014. Downloaded from <http://bmjopen.bmj.com/> on April 15, 2024 by guest. Protected by copyright.

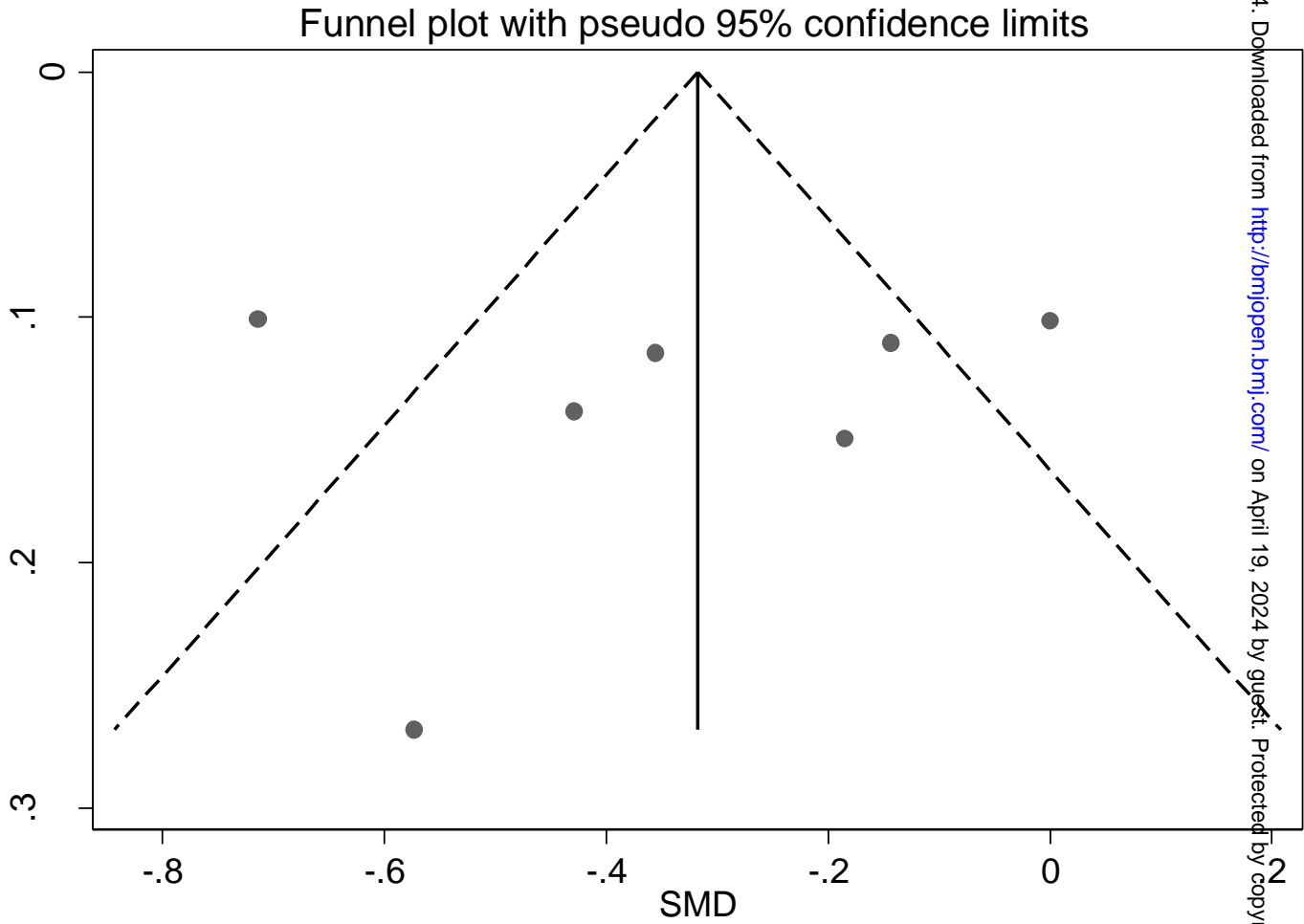


-3 -2 -1 0 1 2 3

Favors collaborative care Favors usual care

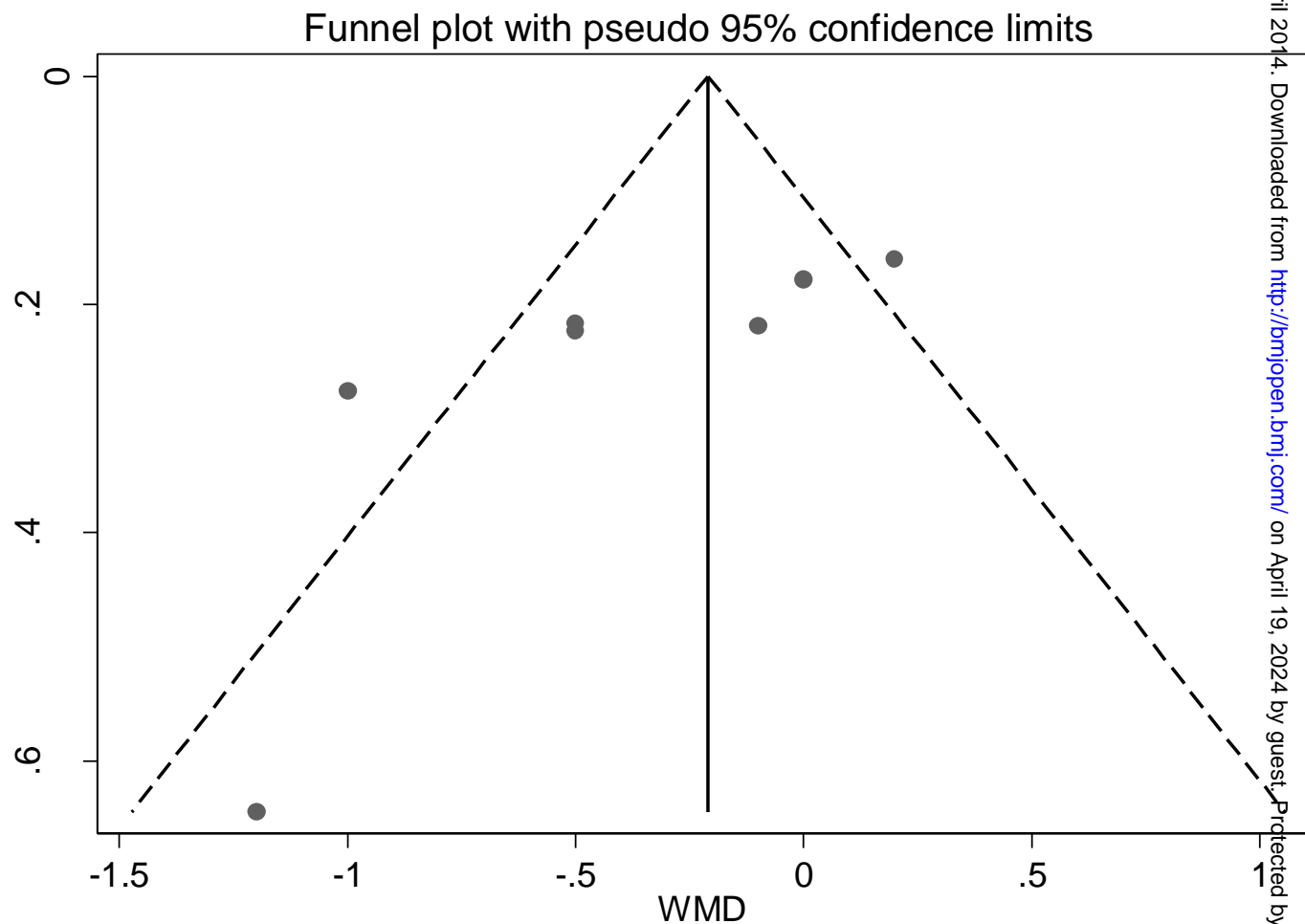


1
2
3
4
5
6
7
8
9
10
11
12
13
14
15
16
17
18
19
20
21
22
23
24
25
26
27
28
29
30
31
32
33
34
35
36
37
38
39
40
41
42
43



1
2
3
4
5
6
7
8
9
10
11
12
13
14
15
16
17
18
19
20
21
22
23
24
25
26
27
28
29
30
31
32
33
34
35
36
37
38
39
40
41
42
43

1
2
3
4
5
6
7
8
9
10
11
12
13
14
15
16
17
18
19
20
21
22
23
24
25
26
27
28
29
30
31
32
33
34
35
36
37
38
39
40
41
42
43



APPENDIX

PubMed search syntax

((("randomized controlled trials as topic"[MeSH Terms] OR randomised controlled trial OR RCT)) AND ((((((comprehensive health care[MeSH Terms]) OR collaborative care[Title/Abstract]) OR multidisciplinary care[Title/Abstract]) OR team care.[Title/Abstract]) OR integrated care[Title/Abstract]) OR complex care[Title/Abstract])) AND (((((((("blood glucose"[MeSH Terms] OR "diabetes complications"[MeSH Terms]) OR "hemoglobin a, glycosylated"[MeSH Terms]) OR hemoglobin A1c[Title/Abstract]) OR "Hemoglobin A, Glycosylated"[Mesh]) OR HbA1c[Title/Abstract]) OR glucose blood level[Title/Abstract]) OR diabetes[Title/Abstract] OR diabetic[Title/Abstract])) AND (((((((psychological distress[Title/Abstract]) OR hypervigilance[Title/Abstract]) OR nervousness[Title/Abstract]) OR anxieties[Title/Abstract]) OR anxious[Title/Abstract]) OR anxiety[MeSH Terms]) OR ("depressive disorder"[MeSH Terms] OR "depression"[MeSH Terms]))

Scopus search syntax

(TITLE-ABS-KEY(depression OR depressi* OR anxiety OR "psychological distress" OR hypervigilance OR nervousness OR anxieties OR melancholi* OR dysthymi*) AND TITLE-ABS-KEY("blood glucose" OR "hb a1c" OR "hemoglobin a glycosylated" OR glycaemic OR diabet*) AND TITLE-ABS-KEY("collaborative care" OR "multidisciplinary care" OR "transmural care" OR "complex care" OR "seamless care" OR "team care") AND TITLE-ABS-KEY(randomi?ed controlled trial OR rct))

1
2
3
4
5
6
7
8
9
10
11
12
13
14
15
16
17
18
19
20
21
22
23
24
25
26
27
28
29
30
31
32
33
34
35
36
37
38
39
40
41
42
43
44
45
46
47
48
49

Quality item checklist for randomised controlled trials reviewed (each worth 1 numerical point)

Study identification	Description of eligibility criteria adequate? (each worth 0.5 points): (1) inclusion criteria; (2) exclusion criteria	Randomization adequate? (each worth 0.5 points): (1) evidence suggesting "random" allocation; (2) evidence suggesting method used to generate random allocation sequence	Allocation concealment adequate?	Between-group prognostic indicators balanced? (each worth 0.5 points): (1) Depression score; (2) HbA1c level	Between-group drop-outs balanced?	Intention to treat analysis included?	Total quality score (out of 6)
Bogner et al, 2010	0.5	0.5	0.0	1.0	1.0	1.0	4.0
Bogner et al, 2012	1.0	1.0	0.0	1.0	1.0	1.0	5.0
Ell et al, 2010	1.0	1.0	1.0	0.5	1.0	1.0	5.5
Katon et al, 2004	1.0	1.0	0.0	1.0	1.0	0.5	4.5
Katon et al, 2010	1.0	1.0	0.0	1.0	1.0	1.0	5.0
Morgan et al, 2013	1.0	0.5	0.0	1.0	1.0	0.0	3.5
Williams et al, 2004	1.0	1.0	1.0	1.0	0.0	0.0	4.0

For peer review only

EXCLUDED CITATIONS (REASONS)

1. Ciechanowski PS, Russo JE, Katon WJ, *et al.* The association of patient relationship style and outcomes in collaborative care treatment for depression in patients with diabetes. *Medical care.* 2006;44(3):283-91.

(Redundant citation; duplicate publication)

2. Ell K, Aranda MP, Xie B, Lee PJ, Chou CP. Collaborative depression treatment in older and younger adults with physical illness: pooled comparative analysis of three randomized clinical trials. *American Journal of Geriatric Psychiatry.* 2010;18(6):520-30.

(Inadequate study design; meta-analysis of RCTs)

3. Fisher L, Polonsky W, Parkin CG, *et al.* The impact of blood glucose monitoring on depression and distress in insulin-naïve patients with type 2 diabetes. *Current Medical Research and Opinion.* 2011;27(SUPPL. 3):39-46.

(Inadequate collaborative care model; structured self-monitoring of blood glucose alone)

4. Lamers F, Jonkers CC, Bosma H, Knottnerus JA, van Eijk JT. Treating depression in diabetes patients: does a nurse-administered minimal psychological intervention affect diabetes-specific quality of life and glycaemic control? A randomized controlled trial. *J Adv Nurs.* 2011;67(4):788-99.

(Inadequate collaborative care model; psychological therapy alone)

5. Lin EH, Korff M, Ciechanowski P, *et al.* Treatment adjustment and medication adherence for complex patients with diabetes, heart disease, and depression: a randomized controlled trial. *Annals of family medicine;* 2012:6-14.

(Redundant citation; duplicate publication)

6. Naji S. Integrated care for diabetes: Clinical, psychosocial, and economic evaluation. *British Medical Journal.* 1994;308(6938):1208-12.

1
2
3 (Inadequate collaborative care model; not specifically for depression)

- 4
5 7. Solberg LI, Crain AL, Sperl-Hillen JM, *et al.* Care quality and implementation of the
6
7 Chronic Care Model: a quantitative study. *Annals of Family Medicine*.
8
9 2006;4(4):310-6.
10

11 (Inadequate study design; not an RCT)

- 12
13
14 8. Stiefel F, Zdrojewski C, Bel Hadj F, *et al.* Effects of a multifaceted psychiatric
15
16 intervention targeted for the complex medically ill: a randomized controlled trial.
17
18 *Psychotherapy & Psychosomatics*. 2008;77(4):247-56.
19

20 (Incomplete data for extraction, contacted author 4 Sep 2013)

- 21
22
23 9. Tapp H, Phillips SE, Waxman D, *et al.* Multidisciplinary team approach to improved
24
25 chronic care management for diabetic patients in an urban safety net ambulatory care
26
27 clinic. *Journal of the American Board of Family Medicine*. 2012;25(2):245-6.
28

29 (Inadequate study design; feasibility and study design)

- 30
31
32 10. Taveira TH, Dooley AG, Cohen LB, Khatana SA, Wu WC. Pharmacist-led group
33
34 medical appointments for the management of type 2 diabetes with comorbid
35
36 depression in older adults. *Ann Pharmacother*. 2011;45(11):1346-55.
37

38 (Inadequate collaborative care; lacked evidence of co-ordination of care)

- 39
40
41 11. Trief PM, Morin PC, Izquierdo R, *et al.* Depression and glycemic control in elderly
42
43 ethnically diverse patients with diabetes: the IDEATel project. *Diabetes Care*.
44
45 2006;29(4):830-5.
46

47 (Incomplete data for extraction, contacted author 5 Sep 2013)

1
2
3 Funnel plot assessing symmetry of 7 RCTs on effectiveness of collaborative care for
4
5 depression outcome
6
7
8
9
10
11
12
13
14
15
16
17
18
19
20
21
22
23
24
25
26
27
28
29
30
31
32
33
34
35
36
37
38
39
40
41
42
43
44
45
46
47
48
49
50
51
52
53
54
55
56
57
58
59
60

For peer review only

Funnel plot assessing symmetry of 7 RCTs on effectiveness of collaborative care for improving HbA1c outcome

For peer review only

1
2
3
4
5
6
7
8
9
10
11
12
13
14
15
16
17
18
19
20
21
22
23
24
25
26
27
28
29
30
31
32
33
34
35
36
37
38
39
40
41
42
43
44
45
46
47
48
49
50
51
52
53
54
55
56
57
58
59
60



PRISMA 2009 Checklist

Section/topic	#	Checklist item	Reported on page #
TITLE			
Title	1	Identify the report as a systematic review, meta-analysis, or both.	1
ABSTRACT			
Structured summary	2	Provide a structured summary including, as applicable: background; objectives; data sources; study eligibility criteria, participants, and interventions; study appraisal and synthesis methods; results; limitations; conclusions and implications of key findings; systematic review registration number.	3
INTRODUCTION			
Rationale	3	Describe the rationale for the review in the context of what is already known.	4,5
Objectives	4	Provide an explicit statement of questions being addressed with reference to participants, interventions, comparisons, outcomes, and study design (PICOS).	5
METHODS			
Protocol and registration	5	Indicate if a review protocol exists, if and where it can be accessed (e.g., Web address), and, if available, provide registration information including registration number.	No
Eligibility criteria	6	Specify study characteristics (e.g., PICOS, length of follow-up) and report characteristics (e.g., years considered, language, publication status) used as criteria for eligibility, giving rationale.	5,6
Information sources	7	Describe all information sources (e.g., databases with dates of coverage, contact with study authors to identify additional studies) in the search and date last searched.	5
Search	8	Present full electronic search strategy for at least one database, including any limits used, such that it could be repeated.	Appendix 1
Study selection	9	State the process for selecting studies (i.e., screening, eligibility, included in systematic review, and, if applicable, included in the meta-analysis).	5,6
Data collection process	10	Describe method of data extraction from reports (e.g., piloted forms, independently, in duplicate) and any processes for obtaining and confirming data from investigators.	6
Data items	11	List and define all variables for which data were sought (e.g., PICOS, funding sources) and any assumptions and simplifications made.	7
Risk of bias in individual studies	12	Describe methods used for assessing risk of bias of individual studies (including specification of whether this was done at the study or outcome level), and how this information is to be used in any data synthesis.	6, appendix 2
Summary measures	13	State the principal summary measures (e.g., risk ratio, difference in means).	7

For peer review only - <http://bmjopen.bmj.com/site/about/guidelines.xhtml>



PRISMA 2009 Checklist

1
2
3
4
5
6
7
8
9
10
11
12
13
14
15
16
17
18
19
20
21
22
23
24
25
26
27
28
29
30
31
32
33
34
35
36
37
38
39
40
41
42
43
44
45
46
47
48
49

Synthesis of results	14	Describe the methods of handling data and combining results of studies, if done, including measures of consistency (e.g., I^2) for each meta-analysis.	7,8
----------------------	----	---	-----

Page 1 of 2

Section/topic	#	Checklist item	Reported on page #
---------------	---	----------------	--------------------

Risk of bias across studies	15	Specify any assessment of risk of bias that may affect the cumulative evidence (e.g., publication bias, selective reporting within studies).	7, 8
Additional analyses	16	Describe methods of additional analyses (e.g., sensitivity or subgroup analyses, meta-regression), if done, indicating which were pre-specified.	Appendix 5,6

RESULTS

Study selection	17	Give numbers of studies screened, assessed for eligibility, and included in the review, with reasons for exclusions at each stage, ideally with a flow diagram.	8,9
Study characteristics	18	For each study, present characteristics for which data were extracted (e.g., study size, PICOS, follow-up period) and provide the citations.	23-26
Risk of bias within studies	19	Present data on risk of bias of each study and, if available, any outcome level assessment (see item 12).	Appendix 5,6
Results of individual studies	20	For all outcomes considered (benefits or harms), present, for each study: (a) simple summary data for each intervention group (b) effect estimates and confidence intervals, ideally with a forest plot.	10,11
Synthesis of results	21	Present results of each meta-analysis done, including confidence intervals and measures of consistency.	10,11
Risk of bias across studies	22	Present results of any assessment of risk of bias across studies (see Item 15).	10,11
Additional analysis	23	Give results of additional analyses, if done (e.g., sensitivity or subgroup analyses, meta-regression [see Item 16]).	27,28

DISCUSSION

Summary of evidence	24	Summarize the main findings including the strength of evidence for each main outcome; consider their relevance to key groups (e.g., healthcare providers, users, and policy makers).	11-13
Limitations	25	Discuss limitations at study and outcome level (e.g., risk of bias), and at review-level (e.g., incomplete retrieval of identified research, reporting bias).	13,14
Conclusions	26	Provide a general interpretation of the results in the context of other evidence, and implications for future research.	14

FUNDING

Funding	27	Describe sources of funding for the systematic review and other support (e.g., supply of data); role of funders for the systematic review.	None
---------	----	--	------

From: Moher D, Liberati A, Tetzlaff J, Altman DG, The PRISMA Group (2009) Preferred Reporting Items for Systematic Reviews and Meta-Analyses: The PRISMA Statement. PLoS Med 6(6): e1000097.



PRISMA 2009 Checklist

1
2
3
4
5
6
7
8
9
10
11
12
13
14
15
16
17
18
19
20
21
22
23
24
25
26
27
28
29
30
31
32
33
34
35
36
37
38
39
40
41
42
43
44
45
46
47
48
49

doi:10.1371/journal.pmed1000097

For more information, visit: www.prisma-statement.org.

Page 2 of 2

For peer review only

For peer review only - <http://bmjopen.bmj.com/site/about/guidelines.xhtml>

BMJ Open

Collaborative care for co-morbid depression and diabetes: a systematic review and meta-analysis

Journal:	<i>BMJ Open</i>
Manuscript ID:	bmjopen-2013-004706.R1
Article Type:	Research
Date Submitted by the Author:	19-Mar-2014
Complete List of Authors:	Atlantis, Evan; University of Western Sydney, Family and Community Health Research Group School of Nursing and Midwifery Fahey, Paul; University of Western Sydney, School of Science and Health Foster, Jann; University of Western Sydney, Family and Community Health Research Group School of Nursing and Midwifery
Primary Subject Heading:	Patient-centred medicine
Secondary Subject Heading:	Diabetes and endocrinology, Evidence based practice, Patient-centred medicine, Mental health
Keywords:	General diabetes < DIABETES & ENDOCRINOLOGY, Diabetes & endocrinology < INTERNAL MEDICINE, Depression & mood disorders < PSYCHIATRY

SCHOLARONE™
Manuscripts

Peer review only

Article title: Collaborative care for co-morbid depression and diabetes: a systematic review
and meta-analysis

^{1,2}Evan Atlantis, PhD; e-mail: e.atlantis@uws.edu.au

³Paul Fahey, MMedStat; e-mail: p.fahey@uws.edu.au

¹Jann Foster, PhD; e-mail: J.Foster@uws.edu.au

¹School of Nursing and Midwifery, University of Western Sydney, Campbelltown Campus,
New South Wales, Australia

²School of Medicine, University of Adelaide, Adelaide, South Australia, Australia

³School of Science and Health, University of Western Sydney, Campbelltown Campus, New
South Wales, Australia

This research was performed at the University of Western Sydney.

Keywords: Collaborative care; depression; diabetes; systematic review; meta-analysis

Text word count: 2914

Abstract word count: 235

1
2
3 For submission to: BMJ open
4
5 Date: 14 March 2014
6
7
8 Corresponding Author: Evan Atlantis, PhD
9
10 Senior Research Fellow
11
12 Family and Community Health Research Group
13
14 School of Nursing and Midwifery | University of Western
15
16 Sydney
17
18 Building 17, Room 17.1.14, Campbelltown Campus,
19
20 Locked Bag 1797, Penrith NSW 2751 AUSTRALIA
21
22 Phone: + 61 2 4620 3263
23
24 Fax: + 61 2 4620 3199
25
26 Email: e.atlantis@uws.edu.au
27
28
29
30
31
32
33
34
35
36
37
38
39
40
41
42
43
44
45
46
47
48
49
50
51
52
53
54
55
56
57
58
59
60

ABSTRACT

Objective: The collaborative care model is recommended for depression in adults with a chronic physical health problem like diabetes. We sought to systematically assess the effect of collaborative care on depression and glycaemia in adults with co-morbid depression and diabetes to inform guidelines and practice.

Design: Systematic review and meta-analysis.

Data sources: We searched PubMed, Scopus, Cochrane Library, Cinahl, Health Source Nursing, Medline, PsychINFO and reference lists of retrieved articles published before August 2013.

Inclusion criteria: Randomised controlled trials (RCTs) on collaborative care (i.e. co-ordinated multi-disciplinary model of care) for depression that reported the effects on depression and glycaemic outcomes in adults with co-morbid clinically relevant depression and diabetes were eligible.

Data extraction and analysis: Data on the mean difference in depression and glycaemic outcomes were extracted and pooled using random effects meta-analysis.

Results: Seven RCTs included for review reported effects on depression outcomes in 1895 participants, and glycated haemoglobin (HbA1c) level in 1556 participants. Collaborative care significantly improved depression score (standardised mean difference was -0.32 [95% CI: -0.53 to -0.11]; I-squared=79.0%) and HbA1c level (weighted mean difference was -0.33% [95% CI: -0.66% to -0.00%]; I-squared=72.9%) compared with control conditions. Depression remission did not predict better glycaemic control across the studies.

Conclusions: Limited evidence from short-to-medium term RCTs predominately conducted in the United States suggests that collaborative care for depression significantly improves both depression and glycaemia outcomes, independently, in people with co-morbid depression and diabetes.

ARTICLE SUMMARY

Article focus

- To systematically assess the effect of collaborative care on depression and glycaemia in adults with co-morbid depression and diabetes.

Key messages

- Limited evidence from short-to-medium term RCTs predominately conducted in the United States suggests that collaborative care for depression significantly improves both depression and glycaemia outcomes.

Strengths and limitations of this study

- Key findings were based on a high-quality systematic review and meta-analysis level of evidence
- Since only a small number of short-to-medium term studies predominately conducted in the United States were included, the findings of this review may not be relevant to health care settings in other countries, requiring further research.

INTRODUCTION

Diabetes is currently ranked the 14th leading cause of global disease burden (assessed using a summary measure of healthy years of life lost due to premature death and years lived with disability), and has moved up several places in the rankings for leading causes since 1990 [1]. The International Diabetes Federation estimated that more than 371 million people (or 8.3% of the adult population worldwide) had diabetes in 2012 [2]. Major depression, currently ranked the 11th leading cause of global disease burden, has also moved up several places in the rankings for leading causes since 1990 [1]. Although rankings varied substantially across regions, health care practitioners in these countries need guidance to better deal with the rising burden of diabetes and depression.

Diabetes is a chronic physical health condition that is often co-morbid with clinically relevant symptoms of depression [3-5]. Practitioners should be aware that depression co-morbidity can significantly worsen the self-care [6], health [7-9] and economic burden of diabetes [10]. This suggests that effective management of depression in people with co-morbid diabetes could potentially reverse several of these adverse outcomes, resulting in better glycaemic control among other benefits.

Current National Institute for Health and Clinical Excellence (NICE) guidelines for depression in adults with a chronic physical health problem, like diabetes, recommend collaborative care in a 'stepped care framework' in which to organise health services [11]. Patients with inadequate response to one or more treatments are 'stepped up' from low intensity care to a more intensive form of management (including lifestyle, psychological and pharmacological therapies). Practitioners should consider collaborative care for patients with co-morbid diabetes and depression, since they typically need more intensive care.

Randomized controlled trial (RCT) evidence shows that collaborative care is more effective than usual care for improving depression outcomes at both short and longer terms in

American primary care settings [12]. Systematic reviews of RCTs have also confirmed that collaborative care is more effective than usual care for improving depression outcomes in people with co-morbid diabetes [13, 14], but there was a lack of consistent evidence for improving glucose control [13, 15]. However, the results of newly published RCTs suggest that collaborative care for depression also leads to significant improvements in glycaemic control [16, 17]. We therefore sought to systematically assess the total body of RCT evidence on collaborative care for depression in adults with co-morbid depression and diabetes to inform guidelines and practice.

METHODS

Search strategy

We searched PubMed, Scopus, Cochrane Library, Cinahl, Health Source Nursing, Medline, PsychINFO and reference lists of retrieved articles published before August 2013. Search syntaxes were developed in consultation with an experienced university research librarian taking into account a broad range of terms and phrases used in definitions of RCTs, collaborative care, depression and diabetes (full electronic search strategies for PubMed and Scopus databases; appendix page 1). Reference lists of potentially eligible articles were searched by hand to identify additional studies missed by our search strategy.

Study selection

Two reviewers (EA and JF) identified potentially relevant studies for inclusion by screening titles and/or abstracts of all citations identified with our database searches. A second screening was performed on the full text of these articles. Articles for RCTs on collaborative care (i.e. evidence showing that the intervention was a co-ordinated multi-disciplinary model of care) for depression that reported the effects on both depression and glycaemic outcomes

1
2
3 in adults, in adults, most of who had to have had co-morbid diabetes, were eligible. There
4
5 were no language restrictions for articles.
6
7

8 9 **Data extraction**

10 Data extraction and quality assessment of included studies were performed and/or verified
11
12 independently by three reviewers (EA, JF and PF). Discrepancies were resolved through
13
14 discussion. Authors of relevant studies were contacted, where possible, for data that could not
15
16 be extracted from the published articles.
17
18
19

20 21 22 **Quality assessment**

23 For methodology and quality assessment, a quality checklist was developed to identify
24
25 potential sources of bias (table; appendix page 2). Quality items for RCTs reviewed were as
26
27 follows (each worth 1.0 numerical point): 1) study eligibility criteria were adequately
28
29 described, 2) randomization methodology was adequate (i.e., evidence suggesting “random”
30
31 method was used to generate and implement random allocation sequence), 3) allocation
32
33 concealment was adequate (i.e., evidence to suggest that a robust method was used for
34
35 concealing the sequence of treatment allocation (e.g., independent IT or telephone service or
36
37 sealed opaque envelopes only opened in front of the participant), 4) between-group primary
38
39 outcomes were balanced at baseline (i.e., evidence showing that groups were similar at the
40
41 outset for primary outcomes), 5) between-group drop-out rates were balanced, and 6)
42
43 intention to treat analysis was included.
44
45
46
47
48

49 Our quality item checklist was designed based on criteria for assessment of RCTs [18, 19]
50
51 and allowed summed scores to range from 0 to 6 points, reflecting lowest to highest quality.
52
53 Studies were considered ‘better quality’ if they received a score higher than 4, since that
54
55 meant that they had most of our quality items.
56
57
58
59
60

Primary outcomes

Data on the mean difference in depression and glycated haemoglobin (HbA1c) outcomes between the treatment and control groups were extracted and pooled using random effects meta-analysis. In one study [16], the post-treatment means were derived from the within group changes and the control group standard deviation carried forward from the baseline values [20]. Standardised mean differences were calculated using Glass's Delta method.

Data synthesis

Three reviewers (EA, PF and JF) independently collated and/or verified extracted data to present a descriptive synthesis of important study characteristics and a quantitative synthesis of effect estimates.

Statistical methods

We pooled and weighted studies first using random effects meta-analysis models, and second using fixed effects models for verification [21]. Results for HbA1c were pooled to estimate the inverse variance weighted mean difference (WMD), including the DerSimonian and Laird 95% confidence interval (95% CI), between treatment and control groups.

In examining the effects of collaborative care treatment on depression scores, the standardised mean difference (SMD) from each RCT were pooled to produce an overall estimate of effect, and associated 95% CI, between treatment and control groups. We used meta-regression to test the hypothesis that the SMD in depression score is a predictor of the WMD in HbA1c level.

For each meta-analysis model, the degree of heterogeneity in WMD or SMD was assessed by visual inspection, the *I*-squared statistic (moderate being < 50% [22]) and the χ^2 -test of

1
2
3 goodness of fit [23]. Where evidence of heterogeneity was observed, we checked data
4 extracted from individual outlier studies, qualitatively investigated reasons for their different
5 results, and explored the effects of study exclusion in sensitivity analyses.
6
7
8

9
10 We also used sensitivity analysis to investigate the robustness of the meta-analyses
11 models. We variously excluded lower quality studies (score of ≤ 4.0), one study conducted
12 outside the United States (Australia), studies that integrated diabetes care, studies which
13 considered lifestyle risk factors, and studies of less than one-year duration. Publication bias,
14 which reflects the tendency for smaller studies to be published in the literature only when
15 findings are positive, was assessed visually using funnel plots [24]. All calculations were
16 performed in Stata version 12 (StataCorp, College Station, TX, USA) using the 'metan',
17 'metareg' and 'metafunnel' commands. Effects were considered statistical significant when the
18 associated 95% confidence intervals did not include zero and heterogeneity was considered
19 statistically significant where the associated P-value was less than 0.05.
20
21
22
23
24
25
26
27
28
29
30
31
32
33

34 RESULTS

35
36 Figure 1 presents a flowchart summarizing identification of potentially relevant studies, and
37 those included and excluded. Our search strategy identified 264 citations after duplicates
38 were removed. Of these, 246 citations were excluded after the first screening of titles and/or
39 abstracts for inclusion and exclusion criteria, leaving 18 citations for a second full text
40 screening. After further assessment, 11 citations were excluded for reasons listed in figure 1
41 leaving seven RCTs for final inclusion in the systematic review. Most studies were excluded
42 for inadequate study design or intervention (i.e. did not qualify as collaborative care model),
43 and a couple of studies were excluded for being redundant duplicate citations and for
44 incomplete data available for extraction (list of excluded citations and reasons; appendix
45 pages 3-4).
46
47
48
49
50
51
52
53
54
55
56
57
58
59
60

<< Figure 1 >>

Descriptive data synthesis

Table 1 presents study characteristics of seven RCTs included for review, which were published between 2004 and 2013. All studies except one [25] were conducted in the United States. Major inclusion criteria were various case definitions of diabetes in five studies [16, 26-29], diabetes and/or coronary heart disease (CHD) in two studies [17, 25], and co-morbid clinically relevant depression in all studies. Major exclusion criteria were cognitive impairment in four studies [16, 17, 28, 29], co-morbid psychiatric disorder or suicidal ideation in four studies [17, 27-29], alcohol problems in two studies [27, 29], and living in residential care in two studies [17, 25], among others. The sample sizes ranged from 58 to 417, resulting in a total of 1895 participants for depression outcomes and 1556 participants for HbA1c outcome across studies. Mean age of the samples ranged from 54 to 71 years. All of the study samples contained both male and female participants. Baseline mean depression scores ranged from 15.6 to 19.7 by the CES-D 20 [26], from 9.9 to 11.6 by the PHQ-9 [16, 25], and from 1.4 to 1.7 by the SCL-20 [17, 27-29]. Baseline mean HbA1c levels ranged from 6.9 to 9.1%. Defining features of collaborative care models investigated were a case manager/officer (usually a nurse or non-physician mental health worker for co-ordination of care) with proactive follow-ups in all studies, a structured management plan delivered within a stepped care framework and relapse prevention in four studies [17, 27-29], an integrated diabetes care program in three studies [16, 17, 26], and consideration for lifestyle risk factors in two studies [17, 25]. Control conditions were “usual care” in four studies [16, 25, 26, 29], whereas usual care was enhanced in the three other studies [17, 27, 28]. Trial durations ranged from 12 to 52 weeks. Primary outcomes were depression score assessed by the CES-D

20 in one study [26], by the PHQ-9 in two studies [16, 25], and by the SCL-20 in four studies [17, 27-29]; and glycaemic control by HbA1c in all of the studies. Mean quality scores ranged from 3.5 to 5.5, and all but three studies [25, 26, 29] received a score of 4.5 or higher.

<< Table 1 >>

Quantitative data synthesis

Effect of collaborative care on depression

Figure 2 presents the SMD in depression outcomes after collaborative care between the treatment and control groups. Collaborative care significantly improved standardised depression outcomes compared with control conditions (pooled SMD was -0.32 [95% CI: -0.53 to -0.11]). There was statistical heterogeneity between studies (I-squared=79.0%, $P<0.001$) that was mostly a result of variation in the degree of benefit favouring collaborative care in all but one study [27], which had significant between-group differences in mean depression scores at baseline. Correcting for these differences substantially changed the SMD for that study (from 0.00 [95% CI: -0.20 to 0.20] to -0.60 [95% CI: -0.81 to -0.39]) in a sensitivity analysis. In addition, the sensitivity analyses presented in table 2 shows that the pooled SMD was substantially changed only after exclusion of lower quality studies (decreased to -0.17 [95% CI: -0.35 to 0.00]). A funnel plot was produced and confirmed widespread heterogeneity of effect estimates between studies, but did not suggest any publication bias (appendix page 5).

<< Figure 2 >>

<< Table 2 >>

Effect of collaborative care on HbA1c

1
2
3 Figure 3 presents the WMD in HbA1c level after collaborative care between the treatment
4 and control groups. Collaborative care significantly reduced HbA1c level compared with
5 control conditions (pooled WMD was -0.33% [95% CI: -0.66% to -0.00%]). There was
6 statistical heterogeneity between studies (I-squared=72.9%, P=0.001) that was mostly a result
7 of variation in the degree of benefit favouring collaborative care in all but two studies [28,
8 29]. The sensitivity analyses presented in table 3 shows that the pooled WMD was slightly
9 decreased in the fixed effect model (-0.21 [95% CI: -0.37 to -0.05]), but no longer
10 statistically significant after each of the various studies was excluded. This was particularly
11 so after exclusion of three studies that integrated diabetes care (decreased to -0.07 [95% CI: -
12 0.35 to 0.21]). A funnel plot was produced and confirmed widespread heterogeneity of effect
13 estimates between studies, but did not suggest any publication bias (appendix page 6).
14
15
16
17
18
19
20
21
22
23
24
25
26
27
28
29

30 << Figure 3 >>

31 << Table 3 >>
32
33
34
35

36 Effect of depression remission on HbA1c

37
38 Figure 4 presents a scatter plot displaying the association between the SMD in depression
39 outcomes and the WMD in HbA1c values in each study. Results of a meta-regression model
40 suggest that the SMD for depression scores failed to predict the WMD in HbA1c values
41 across studies (P=0.828, coefficient was 0.19 [95% CI: -1.93 to 2.31]).
42
43
44
45
46
47
48
49

50 << Figure 4 >>
51
52
53

54 DISCUSSION

55 Summary of evidence 56 57 58 59 60

1
2
3 Based on limited evidence from short-to-medium term RCTs predominately conducted in
4 the United States, our results suggest that collaborative care for depression significantly
5 improves both depression and glycaemia outcomes in people with co-morbid depression and
6 diabetes. Our results for better glycaemic control are novel and more comprehensive than
7 those published from previous meta-analyses because we sought and obtained raw
8 unpublished data from the authors of three studies [27-29]. Furthermore, we found evidence
9 from a sensitivity analysis that future high-quality RCTs [30] will likely strengthen rather
10 than weaken this evidence base. The size of the effect of collaborative care on depression and
11 HbA1c outcomes that can be expected in practice is small-to-moderate, but comparable with
12 pharmacological, psychological and behavioural therapies alone [13, 14, 31, 32], and likely to
13 be clinically relevant. For instance, several of the RCTs we reviewed have also shown that
14 collaborative care for depression in people with co-morbid diabetes is more effective than
15 usual care for improving functional health outcomes [33] and were cost effective [34, 35],
16 consistent with previous economic modelling [36]. In addition, a recent meta-analysis found a
17 positive dose-response trend between HbA1c level and adverse cardiovascular outcomes
18 [37]. This suggests that improvements in glycaemic control from collaborative care for
19 depression could theoretically protect patients with co-morbid diabetes against future
20 cardiovascular risk.

21
22
23
24
25
26
27
28
29
30
31
32
33
34
35
36
37
38
39
40
41
42
43 In contrast, we found no evidence to suggest that improved depression outcomes results in
44 better glycaemic control (lower HbA1c values) among people with co-morbid diabetes. This
45 null finding for reversibility of the effect of depression on glycaemia weakens the evidence
46 base for causality in terms of worsening the burden of diabetes. Alternatively, collaborative
47 care for depression may improve glycaemia in people with diabetes by increasing self-
48 management, independent of the depression prognosis. For example, collaborative care for
49 depression [17] was more effective than usual care for improving blood pressure and blood
50
51
52
53
54
55
56
57
58
59
60

1
2
3 glucose self-monitoring rates [38]. Quality improvement strategies for diabetes care that
4 promote glucose self-monitoring among patients can significantly improve HbA1c level
5 (SMD was 0.57% [0.31% to 0.83]) [39]. Indeed, evidence from our sensitivity analysis
6 showed that the effect of collaborative care on HbA1c was almost entirely confined to the
7 three studies that integrated diabetes care within the collaborative care model [16, 17, 26].
8
9 Second, none of the RCTs we reviewed properly integrated lifestyle intervention, as per the
10 current global guideline for effective management of type 2 diabetes,[40] within the
11 collaborative care. In high-income countries like the United States and Australia, depression
12 is associated with overweight or obesity, physical inactivity, smoking cigarettes and drinking
13 excessive amounts of sugar-sweetened and alcoholic beverages [41, 42], all of which are
14 well-established lifestyle risk factors for diabetes. Indeed, there is international consensus
15 supporting the effectiveness of lifestyle intervention in the prevention and management of
16 type 2 diabetes [40]. In addition, previous systematic reviews of RCTs have shown that
17 exercise (an integral component of lifestyle intervention) is effective for improving both
18 depression score (SMD was -0.82 [95% CI: -1.12 to -0.51]) and HbA1c level (WMD was -
19 0.67% [95% CI: -0.84 to -0.49%]) [43, 44], and the size of these effects are substantially
20 larger than what we found for collaborative care for depression. There is now sufficient
21 evidence to suggest that diabetes care and lifestyle intervention integrated within
22 collaborative care for depression would be the most effective way to manage care for co-
23 morbid depression and diabetes.
24
25
26
27
28
29
30
31
32
33
34
35
36
37
38
39
40
41
42
43
44
45
46
47
48
49

50 Limitations

51
52 Several limitations require further consideration. Since only a small number of short-to-
53 medium term studies predominately conducted in the United States were included, the
54 findings of this review may not be relevant to health care settings in other countries, requiring
55
56
57
58
59
60

1
2
3 further research. In particular, health care systems in most countries are not properly set up to
4 optimize the co-ordination between practitioners [45]. Integration of therapies including
5 collaborative care, diabetes care and lifestyle intervention is required to effectively manage
6 co-morbid depression diabetes. Secondly, baseline mean HbA1c level was close to the upper
7 limit of the normal range in several studies, which would have underestimated the effect size
8 for, and therapeutic benefit of, collaborative care for glycaemic control. Finally, reviewer-
9 level limitations include incomplete retrieval of information for several of the 11 citations
10 excluded, and the existence of other relevant studies not identified with our search strategy
11 resulting in bias. However, the results and conclusions reported in most of the excluded
12 studies were in line with those reported here, search strategy bias was unlikely.
13
14
15
16
17
18
19
20
21
22
23
24
25
26

27 **Conclusions**

28
29 Limited evidence from short-to-medium term RCTs predominately conducted in the
30 United States suggest that collaborative care for depression significantly improves both
31 depression and glycaemia outcomes, independently, in people with co-morbid depression and
32 diabetes. Future research should investigate the effectiveness, feasibility and appropriateness
33 of collaborative care integration with diabetes care and lifestyle intervention for co-morbid
34 depression and diabetes, and other co-morbid cardiovascular risk conditions, in routine
35 clinical practice in specific health care settings worldwide.
36
37
38
39
40
41
42
43
44
45
46
47
48
49
50
51
52
53
54
55
56
57
58
59
60

1
2
3 **Figure 1: Flowchart summarizing identification of studies included for review.**

4
5 **Figure 2: SMD in depression outcomes after collaborative care between the treatment**
6 **and control groups.**

7
8
9
10 **Figure 3: WMD in HbA1c level after collaborative care between the treatment and**
11 **control groups.**

12
13
14 **Figure 4: Scatter plot displaying the association between the SMD in depression**
15 **outcomes and the WMD in HbA1c values in each study.**

16
17
18
19
20
21 **Appendix page 5: Funnel plot assessing symmetry of 7 RCTs on effectiveness of**
22 **collaborative care for depression outcome.**

23
24
25 **Appendix page 6: Funnel plot assessing symmetry of 7 RCTs on effectiveness of**
26 **collaborative care for improving HbA1c outcome.**

ACKNOWLEDGMENTS

Authorship order is according to percentage contribution. EA is guarantor of the paper, taking responsibility for the integrity of the work as a whole, from inception to published article. EA conceived and designed the review, identified studies for inclusion, extracted and interpreted data, and drafted the article. PF analysed and interpreted data, and revised the article. JF extracted and interpreted data, and revised the article. All authors approved the final completed article. We are grateful to Mrs Rohini Patil for her work on developing and conducting the electronic database searches.

COMPETING INTERESTS

EA has received honoraria for speaking at events for Eli Lilly Australia Pty Ltd (Lilly).

CONTRIBUTORSHIP

Authorship order is according to percentage contribution. EA is guarantor of the paper, taking responsibility for the integrity of the work as a whole, from inception to published article. EA conceived and designed the review, identified studies for inclusion, extracted and interpreted data, and drafted the article. PF analysed and interpreted data, and revised the article. JF extracted and interpreted data, and revised the article. All authors approved the final completed article. We are grateful to Mrs Rohini Patil for her work on developing and conducting the electronic database searches.

DATA SHARING

No additional data available.

REFERENCES

1. Murray CJ, Vos T, Lozano R, *et al.* Disability-adjusted life years (DALYs) for 291 diseases and injuries in 21 regions, 1990-2010: a systematic analysis for the Global Burden of Disease Study 2010. *Lancet*. 2012 Dec 15;380(9859):2197-223.
2. International Diabetes Federation. IDF Diabetes Atlas. 5th Edn. © 2013 International Diabetes Federation. 2013.
3. Atlantis E. Excess burden of type 1 and type 2 diabetes due to psychopathology. *J Affect Disord*. 2012 Oct;142 Suppl:S36-41.
4. Lin EHB, Von Korff M, Consortium WWS. Mental disorders among persons with diabetes-Results from the World Mental Health Surveys. *J Psychosom Res*. 2008 Dec;65(6):571-80.
5. Moussavi S, Chatterji S, Verdes E, *et al.* Depression, chronic diseases, and decrements in health: results from the World Health Surveys. *Lancet*. 2007 Sep 8;370(9590):851-8.
6. Lin EHB, Katon W, Von Korff M, *et al.* Relationship of depression and diabetes self-care, medication adherence, and preventive care. *Diabetes care*. 2004 Sep;27(9):2154-60.
7. Atlantis E, Goldney RD, Eckert KA, *et al.* Trends in health-related quality of life and health service use associated with comorbid diabetes and major depression in South Australia, 1998-2008. *Social psychiatry and psychiatric epidemiology*. 2012 Jun;47(6):871-7.
8. Lin EHB, Rutter CM, Katon W, *et al.* Depression and Advanced Complications of Diabetes - A prospective cohort study. *Diabetes care*. 2010 Feb;33(2):264-9.

- 1
2
3 9. Park M, Katon WJ, Wolf FM. Depression and risk of mortality in individuals with
4 diabetes: a meta-analysis and systematic review. *General hospital psychiatry*. 2013
5 5//;35(3):217-25.
6
7
- 8
9
10 10. Molosankwe I, Patel A, Gagliardino JJ, et al. Economic aspects of the association
11 between diabetes and depression: A systematic review. *Journal of Affective Disorders*. 2012
12 Oct;142:S42-S55.
13
- 14
15
16 11. National Institute for Health and Clinical Excellence. NICE Clinical Guideline 91.
17 Depression in adults with a chronic physical health problem. Treatment and management.
18 London 2009.
19
20
- 21
22
23 12. Gilbody S, Bower P, Fletcher J, et al. Collaborative care for depression - A
24 cumulative meta-analysis and review of longer-term outcomes. *Arch Intern Med*. 2006 Nov
25 27;166(21):2314-21.
26
27
- 28
29
30 13. Van der Feltz-Cornelis CM, Nuyen J, Stoop C, et al. Effect of interventions for major
31 depressive disorder and significant depressive symptoms in patients with diabetes mellitus: a
32 systematic review and meta-analysis. *General hospital psychiatry*. 2010 Jul-Aug;32(4):380-
33 95.
34
35
- 36
37
38 14. Ekers D, Murphy R, Archer J, et al. Nurse-delivered collaborative care for depression
39 and long-term physical conditions: A systematic review and meta-analysis. *Journal of*
40 *Affective Disorders*. 2013 Jul;149(1-3):14-22.
41
42
- 43
44
45 15. Huang Y, Wei X, Wu T, et al. Collaborative care for patients with depression and
46 diabetes mellitus: a systematic review and meta-analysis. *BMC Psychiatry*. 2013;13:260.
47
48
- 49
50
51 16. Bogner HR, Morales KH, de Vries HF, et al. Integrated management of type 2
52 diabetes mellitus and depression treatment to improve medication adherence: a randomized
53 controlled trial. *Annals of family medicine*. 2012 2012;10(1):15-22.
54
55
56
57
58
59
60

- 1
2
3 17. Katon WJ, Lin EH, Von Korff M, *et al.* Collaborative care for patients with
4 depression and chronic illnesses. *The New England journal of medicine.* 2010 Dec
5 30;363(27):2611-20.
6
7
8
9
10 18. CRD's guidance for undertaking reviews in health care. © Centre for Reviews and
11 Dissemination University of York 2008 Published by CRD 2009.
12
13
14 19. Schulz KF, Altman DG, Moher D. CONSORT 2010 statement: updated guidelines for
15 reporting parallel group randomised trials. *BMJ.* 2010;340:c332.
16
17
18
19 20. Higgins JPT, Green S. *Cochrane Handbook for Systematic Reviews of Interventions*
20 Version 5.1.0 [updated March 2011]. The Cochrane Collaboration, 2011 Available from
21 wwwcochrane-handbookorg [serial on the Internet]. editors.
22
23
24
25
26 21. DerSimonian R, Laird N. Meta-analysis in clinical trials. *Control Clin Trials.* 1986
27 Sep;7(3):177-88.
28
29
30
31 22. Higgins JP, Thompson SG, Deeks JJ, *et al.* Measuring inconsistency in meta-analyses.
32 *BMJ.* 2003 Sep 6;327(7414):557-60.
33
34
35
36 23. Higgins JP, Thompson SG. Quantifying heterogeneity in a meta-analysis. *Stat Med.*
37 2002 Jun 15;21(11):1539-58.
38
39
40
41 24. Egger M, Davey Smith G, Schneider M, *et al.* Bias in meta-analysis detected by a
42 simple, graphical test. *BMJ.* 1997 Sep 13;315(7109):629-34.
43
44
45
46 25. Morgan MAJ, Coates MJ, Dunbar JA, *et al.* The TrueBlue model of collaborative care
47 using practice nurses as case managers for depression alongside diabetes or heart disease: A
48 randomised trial. *BMJ Open.* 2013 //;3(1).
49
50
51
52 26. Bogner HR, de Vries HF. Integrating type 2 diabetes mellitus and depression
53 treatment among African Americans: a randomized controlled pilot trial. *The Diabetes*
54 *educator.* 2010 Mar-Apr;36(2):284-92.
55
56
57
58
59
60

- 1
2
3 27. Ell K, Katon W, Xie B, *et al.* Collaborative care management of major depression
4 among low-income, predominantly hispanic subjects with diabetes: A randomized controlled
5 trial. *Diabetes care*. 2010 April;33(4):706-13.
6
7
8
9
10 28. Katon WJ, Korff M, Lin EH, *et al.* The Pathways Study: a randomized trial of
11 collaborative care in patients with diabetes and depression. *Archives of general psychiatry*
12 [serial on the Internet]. 2004; 61(10): Available from:
13 <http://onlinelibrary.wiley.com/o/cochrane/clcentral/articles/912/CN-00491912/frame.html>.
14
15
16
17
18 29. Williams Jr JW, Katon W, Lin EHB, *et al.* The effectiveness of depression care
19 management on diabetes-related outcomes in older patients. *Annals of Internal Medicine*.
20 2004 15 Jun;140(12):1015-24+I-51.
21
22
23
24 30. Johnson JA, Al Sayah F, Wozniak L, *et al.* Controlled trial of a collaborative primary
25 care team model for patients with diabetes and depression: Rationale and design for a
26 comprehensive evaluation. *BMC health services research*. 2012;12:258-.
27
28
29
30 31. Baumeister H, Hutter N, Bengel J. Psychological and pharmacological interventions
31 for depression in patients with diabetes mellitus and depression. *The Cochrane database of*
32 *systematic reviews*. 2012;12:CD008381.
33
34
35
36 32. Avery L, Flynn D, van Wersch A, *et al.* Changing physical activity behavior in type 2
37 diabetes: a systematic review and meta-analysis of behavioral interventions. *Diabetes care*.
38 2012 Dec;35(12):2681-9.
39
40
41
42 33. Von Korff M, Katon WJ, Lin EH, *et al.* Functional outcomes of multi-condition
43 collaborative care and successful ageing: results of randomised trial. *BMJ (Clinical research*
44 *ed)*. 2011;343:d6612.
45
46
47
48 34. Hay JW, Katon WJ, Ell K, *et al.* Cost-effectiveness analysis of collaborative care
49 management of major depression among low-income, predominantly Hispanics with
50
51
52
53
54
55
56
57
58
59
60

1
2
3 diabetes. *Value in health : the journal of the International Society for Pharmacoeconomics*
4 *and Outcomes Research*. 2012 Mar-Apr;15(2):249-54.

5
6
7 35. Katon W, Russo J, Lin EHB, *et al*. Cost-effectiveness of a multicondition
8 collaborative care intervention. *Archives of General Psychiatry*. 2012 May;69(5):506-14.

9
10
11 36. Jacob V, Chattopadhyay SK, Sipe TA, *et al*. Economics of collaborative care for
12 management of depressive disorders: a community guide systematic review. *American*
13 *journal of preventive medicine*. 2012 May;42(5):539-49.

14
15
16 37. Zhang Y, Hu G, Yuan Z, *et al*. Glycosylated hemoglobin in relationship to
17 cardiovascular outcomes and death in patients with type 2 diabetes: a systematic review and
18 meta-analysis. *PloS one*. 2012;7(8):e42551.

19
20
21 38. Lin EH, Von Korff M, Ciechanowski P, *et al*. Treatment adjustment and medication
22 adherence for complex patients with diabetes, heart disease, and depression: a randomized
23 controlled trial. *Annals of Family Medicine*. 2012;10(1):6-14.

24
25
26 39. Tricco AC, Ivers NM, Grimshaw JM, *et al*. Effectiveness of quality improvement
27 strategies on the management of diabetes: a systematic review and meta-analysis. *Lancet*.
28 2012 Jun 16;379(9833):2252-61.

29
30
31 40. International Diabetes Federation, Clinical Guidelines Task Force. Global Guideline
32 for Type 2 Diabetes. © International Diabetes Federation, 2012.

33
34
35 41. Strine TW, Mokdad AH, Dube SR, *et al*. The association of depression and anxiety
36 with obesity and unhealthy behaviors among community-dwelling US adults. *Gen Hosp*
37 *Psychiatry*. 2008 Mar-Apr;30(2):127-37.

38
39
40 42. Shi Z, Taylor AW, Wittert G, *et al*. Soft drink consumption and mental health
41 problems among adults in Australia. *Public Health Nutr*. 2010 Jul;13(7):1073-9.

1
2
3 43. Rimer J, Dwan K, Lawlor DA, *et al.* Exercise for depression. *The Cochrane database*
4 *of systematic reviews.* 2012;7:CD004366.
5
6

7 44. Umpierre D, Ribeiro PA, Kramer CK, *et al.* Physical activity advice only or
8 structured exercise training and association with HbA1c levels in type 2 diabetes: a
9 systematic review and meta-analysis. *JAMA : the journal of the American Medical*
10 *Association.* 2011 May 4;305(17):1790-9.
11
12
13
14

15 45. Roberts RG, Gask L, Arndt B, *et al.* Depression and diabetes: The role and impact of
16 models of health care systems. *Journal of Affective Disorders.* 2012;142:S80-8.
17
18
19
20
21
22
23
24
25
26
27
28
29
30
31
32
33
34
35
36
37
38
39
40
41
42
43
44
45
46
47
48
49
50
51
52
53
54
55
56
57
58
59
60

TABLE 1: Characteristics of randomised controlled trials reviewed

adjacent.....continued →

Study identification	Country	Sample size	Population		Men (%); Mean age (years)	Baseline mean depression score		Baseline mean HbA1c (%)	
			Major inclusion criteria (all)	Major exclusion criteria (any)		Treated	Controls	Treated	Controls
Bogner et al, 2010 ²⁶	United States	58	Aged ≥50 years, recent HbA1c >7 or an oral hypoglycaemic prescription within past year, diagnosed depression or an antidepressant prescription within past year	None specified	16; 60	15.6	19.7	7.3	7.3
Bogner et al, 2012 ¹⁶	United States	180	Aged ≥30 years, diagnosis of type 2 diabetes and current oral hypoglycaemic prescription, current antidepressant prescription	No informed consent, cognitive impairment (Mini-Mental State Examination <21), residence in care facility providing medications, unwillingness or inability to use the Medication Event Monitoring System	32; 57	10.6	9.9	7.2	7.0
Ell et al, 2010 ^{27*}	United States	387	Aged ≥18 years, "with diabetes", one of two cardinal depressive symptoms most days and depression score ≥10 by the PHQ-9, informed consent	Acute suicidal ideation, score of ≥8 by the Alcohol Use Disorders Identification Test, inability to speak Spanish or English	18; 54	1.7	1.4	9.0	9.1
Katon et al, 2004 ^{28*}	United States	329	Diabetes (by registry), depression score of ≥10 by the PHQ-9 at first screening and score of ≥1.1 by the SCL-90 at second telephone screening, ambulatory, English speaking, adequate hearing for telephone interview, planned continued enrolment in the clinic during the next year	Currently in care of psychiatrist, diagnosed bipolar disorder or schizophrenia, current antipsychotic or mood stabilizer medications, symptoms of dementia	35; 58	1.7	1.6	8.0	8.0
Katon et al, 2010 ¹⁷	United States	214	Diabetes, coronary heart disease or both (by registry), depression score of ≥3 by the PHQ-2 and ≥10 by the PHQ-9, ambulatory, spoke English, and planned be enrolled in the Health Maintenance Organization for 12 months	Terminal illness, residence in long-term facility, severe hearing loss, planned bariatric surgery within three months, pregnancy or breast feeding, ongoing psychiatric care, bipolar disorder or schizophrenia, current antipsychotic or mood stabilizer medications, symptoms of dementia	48; 57	1.7	1.7	8.1	8.0
Morgan et al, 2013 ²⁵	Australia	156 (glycaemia); 310 (depression)	Type 2 diabetes, coronary heart disease or both (by registry), depression score of ≥5 by the PHQ-9, informed consent	Aged <18 years, in residential care	55; 68	10.7	11.6	7.0	6.9

For peer review only - <http://bmjopen.bmj.com/site/about/guidelines.xhtml>

1
2
3
4
5
6
7
8
9
10
11
12
13
14
15
16
17
18
19
20
21
22
23
24
25
26
27
28
29
30
31
32
33
34
35
36
37
38
39
40
41
42
43
44
45
46
47
48
49

25

Williams et al, 2004 ^{29*}	United States	232 (glycaemia); 417 (depression)	Diagnosed or treated diabetes or high blood sugar in past three years by self-report, current major depression or dysthymic disorder by structured clinical interview according to DSM-IV	Current drinking problem (score of ≥2 by the CAGE questionnaire), history of bipolar disorder or psychosis, ongoing psychiatric care, or severe cognitive impairment (score of <3 by questionnaire)	47; 71	1.7	1.7	7.3	7.3
-------------------------------------	---------------	--------------------------------------	---	---	--------	-----	-----	-----	-----

Abbreviations: HbA1c, glycated haemoglobin; CES-D, Center for Epidemiological Studies Depression scale; PHQ, Patient Health Questionnaire; SCL, Symptom Checklist; DSM-IV, Diagnostic and Statistical Manual of Mental Disorders, fourth edition
 *Raw data was provided by the author

For peer review only

→ adjacent.....continued

Treatments	Control conditions	Trial duration (weeks)	Outcomes (assessments)	Quality score (out of 6)
"Integrated care"; consisted of supervised case manager, patient-centred care, education and integrated care for depression and diabetes; three 30 min in person and two 15 min telephone follow-up sessions over four weeks	"Usual care"; and study assessments	12	Glycaemia (HbA1c); depression score (CES-D 20)	4.0
"Integrated care"; consisted of supervised case manager, patient-centred care, education and integrated care for depression and diabetes; three 30 min in person and two 15 min telephone follow-up sessions over three months	"Usual care"; and study assessments	12	Glycaemia (HbA1c); depression score (PHQ-9)	5.0
"Collaborative care"; consisted of supervised nurse case manager, patient-centred care, problem solving therapy, self-monitoring education, and coordination of care and services for depression and diabetes within a stepped-care framework; monthly telephone symptom monitoring, treatment maintenance and relapse prevention up to 12 months	"Enhanced usual care"; and patient and family-focused depression education pamphlets	52	Glycaemia (HbA1c); depression score (SCL-20)	5.5
"Collaborative care"; consisted of supervised nurse case manager, patient-centred care (initial choice of antidepressant or problem solving therapy), within a stepped-care framework; initial one hour visit, followed by twice monthly half-hour follow-ups (telephone or in-person) up to 12 weeks and referral to speciality care thereafter if necessary	"Usual care"; and advice to consult their physician for depression care	26	Glycaemia (HbA1c); depression score (SCL-20)	4.5
"Collaborative care"; consisted of supervised nurse case manager, "treat-to-target program" integrated care for specific conditions, within a stepped-care framework, motivational problem solving and goal setting for self-care (including exercise, and "The Depression Helpbook", video and written material); structured visits every two to three weeks, and maintenance plan once targeted levels were achieved including telephone follow-ups every four weeks	"Enhanced usual care"; patients could self-refer to mental health care or be referred by primary care physicians at the clinic; and study assessments	52	Glycaemia (HbA1c); depression score (SCL-20)	5.0
"Collaborative care"; consisted of collaborative care trained nurse case manager, 45 min nurse consult every three months followed (for assessment of lifestyle, physical and biochemical risk factors, and referrals, self-care of depression and setting personal goals for review and discussion of educational resources), followed by a 15 min consult with their usual general practitioner	"Usual care"; baseline data collected retrospectively	26	Glycaemia (HbA1c); depression score (PHQ-9)	3.5

1
2
3
4
5
6
7
8
9
10
11
12
13
14
15
16
17
18
19
20
21
22
23
24
25
26
27
28
29
30
31
32
33
34
35
36
37
38
39
40
41
42
43
44
45
46
47
48
49

Collaborative care; consisted of trained nurse or psychologist case manager, patient-centred care, problem solving therapy, 20 min educational video tape and written material on late-life depression, and coordination of care and services for depression within a stepped-care framework; monthly telephone symptom monitoring, treatment maintenance and relapse prevention up to 12 months; diabetes care not specifically enhanced

"Usual care"; and study assessments

52

Glycaemia (HbA1c); depression score (SCL-20)

4.0

For peer review only

TABLE 2: Sensitivity analysis of randomized controlled trials of collaborative care → depression score outcome meta-analysis

	N studies	N sample	SMD	(95% confidence interval)	P-value for heterogeneity
Fixed effects model	7	1895	-0.31	(-0.40 to -0.22)	<0.001
Exclusion of 3 lower quality studies (score ≤4.0)	4	1110	-0.17	(-0.35 to 0.00)	0.101
Exclusion of 1 study outside the United States (Australia)	6	1585	-0.32	(-0.57 to -0.07)	<0.001
Exclusion of 3 studies that integrated diabetes care	4	1443	-0.30	(-0.62 to 0.01)	<0.001
Exclusion of 2 studies that considered lifestyle risk factors	5	1371	-0.30	(-0.59 to 0.00)	<0.001
Exclusion of 4 studies less than 1 year duration	3	1018	-0.34	(-0.68 to 0.01)	<0.001

Abbreviations: N, number; SMD, standardized mean difference

TABLE 3: Sensitivity analysis of randomised controlled trials of collaborative care → HbA1c outcome meta-analysis

	N studies	N sample	WMD	(95% confidence interval)	P-value for heterogeneity
Fixed effects model	7	1556	-0.21	(-0.37 to -0.05)	0.001
Exclusion of 3 lower quality studies (score ≤4.0)	4	1110	-0.32	(-0.81 to 0.17)	0.001
Exclusion of 1 study outside the United States (Australia)	6	1400	-0.31	(-0.68 to 0.07)	0.001
Exclusion of 3 studies that integrated diabetes care	4	1104	-0.07	(-0.35 to 0.21)	0.086
Exclusion of 2 studies that considered lifestyle risk factors	5	1186	-0.27	(-0.71 to 0.16)	0.002
Exclusion of 4 studies less than 1 year duration	3	833	-0.18	(-0.48 to 0.11)	0.189

Abbreviations: N, number; WMD, weighted mean difference

Article title: Collaborative care for co-morbid depression and diabetes: a systematic review
and meta-analysis

^{1,2}Evan Atlantis, PhD; e-mail: e.atlantis@uws.edu.au

³Paul Fahey, MMedStat; e-mail: p.fahey@uws.edu.au

¹Jann Foster, PhD; e-mail: J.Foster@uws.edu.au

¹School of Nursing and Midwifery, University of Western Sydney, Campbelltown Campus,
New South Wales, Australia

²School of Medicine, University of Adelaide, Adelaide, South Australia, Australia

³School of Science and Health, University of Western Sydney, Campbelltown Campus, New
South Wales, Australia

This research was performed at the University of Western Sydney.

Keywords: Collaborative care; depression; diabetes; systematic review; meta-analysis

Text word count: 2914

Abstract word count: 235

1
2
3 For submission to: BMJ open
4
5 Date: 14 March 2014
6
7
8 Corresponding Author: Evan Atlantis, PhD
9
10 Senior Research Fellow
11
12 Family and Community Health Research Group
13
14 School of Nursing and Midwifery | University of Western
15
16 Sydney
17
18 Building 17, Room 17.1.14, Campbelltown Campus,
19
20 Locked Bag 1797, Penrith NSW 2751 AUSTRALIA
21
22 Phone: + 61 2 4620 3263
23
24 Fax: + 61 2 4620 3199
25
26 Email: e.atlantis@uws.edu.au
27
28
29
30
31
32
33
34
35
36
37
38
39
40
41
42
43
44
45
46
47
48
49
50
51
52
53
54
55
56
57
58
59
60

ABSTRACT

Objective: The collaborative care model is recommended for depression in adults with a chronic physical health problem like diabetes. We sought to systematically assess the effect of collaborative care on depression and glycaemia in adults with co-morbid depression and diabetes to inform guidelines and practice.

Design: Systematic review and meta-analysis.

Data sources: We searched PubMed, Scopus, Cochrane Library, Cinahl, Health Source Nursing, Medline, PsychINFO and reference lists of retrieved articles published before August 2013.

Inclusion criteria: Randomised controlled trials (RCTs) on collaborative care (i.e. co-ordinated multi-disciplinary model of care) for depression that reported the effects on depression and glycaemic outcomes in adults with co-morbid clinically relevant depression and diabetes were eligible.

Data extraction and analysis: Data on the mean difference in depression and glycaemic outcomes were extracted and pooled using random effects meta-analysis.

Results: Seven RCTs included for review reported effects on depression outcomes in 1895 participants, and glycated haemoglobin (HbA1c) level in 1556 participants. Collaborative care significantly improved depression score (standardised mean difference was -0.32 [95% CI: -0.53 to -0.11]; I-squared=79.0%) and HbA1c level (weighted mean difference was -0.33% [95% CI: -0.66% to -0.00%]; I-squared=72.9%) compared with control conditions. Depression remission did not predict better glycaemic control across the studies.

Conclusions: Limited evidence from short-to-medium term RCTs predominately conducted in the United States suggests that collaborative care for depression significantly improves both depression and glycaemia outcomes, independently, in people with co-morbid depression and diabetes.

ARTICLE SUMMARY

Article focus

- To systematically assess the effect of collaborative care on depression and glycaemia in adults with co-morbid depression and diabetes.

Key messages

- Limited evidence from short-to-medium term RCTs predominately conducted in the United States suggests that collaborative care for depression significantly improves both depression and glycaemia outcomes.

Strengths and limitations of this study

- Key findings were based on a high-quality systematic review and meta-analysis level of evidence
- Since only a small number of short-to-medium term studies predominately conducted in the United States were included, the findings of this review may not be relevant to health care settings in other countries, requiring further research.

INTRODUCTION

Diabetes is currently ranked the 14th leading cause of global disease burden (assessed using a summary measure of healthy years of life lost due to premature death and years lived with disability), and has moved up several places in the rankings for leading causes since 1990 [1]. The International Diabetes Federation estimated that more than 371 million people (or 8.3% of the adult population worldwide) had diabetes in 2012 [2]. Major depression, currently ranked the 11th leading cause of global disease burden, has also moved up several places in the rankings for leading causes since 1990 [1]. Although rankings varied substantially across regions, health care practitioners in these countries need guidance to better deal with the rising burden of diabetes and depression.

Diabetes is a chronic physical health condition that is often co-morbid with clinically relevant symptoms of depression [3-5]. Practitioners should be aware that depression co-morbidity can significantly worsen the self-care [6], health [7-9] and economic burden of diabetes [10]. This suggests that effective management of depression in people with co-morbid diabetes could potentially reverse several of these adverse outcomes, resulting in better glycaemic control among other benefits.

Current National Institute for Health and Clinical Excellence (NICE) guidelines for depression in adults with a chronic physical health problem, like diabetes, recommend collaborative care in a 'stepped care framework' in which to organise health services [11]. Patients with inadequate response to one or more treatments are 'stepped up' from low intensity care to a more intensive form of management (including lifestyle, psychological and pharmacological therapies). Practitioners should consider collaborative care for patients with co-morbid diabetes and depression, since they typically need more intensive care.

Randomized controlled trial (RCT) evidence shows that collaborative care is more effective than usual care for improving depression outcomes at both short and longer terms in

American primary care settings [12]. Systematic reviews of RCTs have also confirmed that collaborative care is more effective than usual care for improving depression outcomes in people with co-morbid diabetes [13, 14], but there was a lack of consistent evidence for improving glucose control [13, 15]. However, the results of newly published RCTs suggest that collaborative care for depression also leads to significant improvements in glycaemic control [16, 17]. We therefore sought to systematically assess the total body of RCT evidence on collaborative care for depression in adults with co-morbid depression and diabetes to inform guidelines and practice.

METHODS

Search strategy

We searched PubMed, Scopus, Cochrane Library, Cinahl, Health Source Nursing, Medline, PsychINFO and reference lists of retrieved articles published before August 2013. Search syntaxes were developed in consultation with an experienced university research librarian taking into account a broad range of terms and phrases used in definitions of RCTs, collaborative care, depression and diabetes (full electronic search strategies for PubMed and Scopus databases; appendix page 1). Reference lists of potentially eligible articles were searched by hand to identify additional studies missed by our search strategy.

Study selection

Two reviewers (EA and JF) identified potentially relevant studies for inclusion by screening titles and/or abstracts of all citations identified with our database searches. A second screening was performed on the full text of these articles. Articles for RCTs on collaborative care (i.e. evidence showing that the intervention was a co-ordinated multi-disciplinary model of care) for depression that reported the effects on both depression and glycaemic outcomes

1
2
3 in adults, in adults, most of who had to have had co-morbid diabetes, were eligible. There
4
5 were no language restrictions for articles.
6
7

8 9 10 **Data extraction**

11 Data extraction and quality assessment of included studies were performed and/or verified
12 independently by three reviewers (EA, JF and PF). Discrepancies were resolved through
13 discussion. Authors of relevant studies were contacted, where possible, for data that could not
14 be extracted from the published articles.
15
16
17
18
19

20 21 22 **Quality assessment**

23 For methodology and quality assessment, a quality checklist was developed to identify
24 potential sources of bias (table; appendix page 2). Quality items for RCTs reviewed were as
25 follows (each worth 1.0 numerical point): 1) study eligibility criteria were adequately
26 described, 2) randomization methodology was adequate (i.e., evidence suggesting “random”
27 method was used to generate and implement random allocation sequence), 3) allocation
28 concealment was adequate (i.e., evidence to suggest that a robust method was used for
29 concealing the sequence of treatment allocation (e.g., independent IT or telephone service or
30 sealed opaque envelopes only opened in front of the participant), 4) between-group primary
31 outcomes were balanced at baseline (i.e., evidence showing that groups were similar at the
32 outset for primary outcomes), 5) between-group drop-out rates were balanced, and 6)
33 intention to treat analysis was included.
34
35
36
37
38
39
40
41
42
43
44
45
46
47
48
49

50 Our quality item checklist was designed based on criteria for assessment of RCTs [18, 19]
51 and allowed summed scores to range from 0 to 6 points, reflecting lowest to highest quality.
52 Studies were considered ‘better quality’ if they received a score higher than 4, since that
53 meant that they had most of our quality items.
54
55
56
57
58
59
60

Primary outcomes

Data on the mean difference in depression and glycated haemoglobin (HbA1c) outcomes between the treatment and control groups were extracted and pooled using random effects meta-analysis. In one study [16], the post-treatment means were derived from the within group changes and the control group standard deviation carried forward from the baseline values [20]. Standardised mean differences were calculated using Glass's Delta method.

Data synthesis

Three reviewers (EA, PF and JF) independently collated and/or verified extracted data to present a descriptive synthesis of important study characteristics and a quantitative synthesis of effect estimates.

Statistical methods

We pooled and weighted studies first using random effects meta-analysis models, and second using fixed effects models for verification [21]. Results for HbA1c were pooled to estimate the inverse variance weighted mean difference (WMD), including the DerSimonian and Laird 95% confidence interval (95% CI), between treatment and control groups.

In examining the effects of collaborative care treatment on depression scores, the standardised mean difference (SMD) from each RCT were pooled to produce an overall estimate of effect, and associated 95% CI, between treatment and control groups. We used meta-regression to test the hypothesis that the SMD in depression score is a predictor of the WMD in HbA1c level.

For each meta-analysis model, the degree of heterogeneity in WMD or SMD was assessed by visual inspection, the *I*-squared statistic (moderate being < 50% [22]) and the χ^2 -test of

1
2
3 goodness of fit [23]. Where evidence of heterogeneity was observed, we checked data
4 extracted from individual outlier studies, qualitatively investigated reasons for their different
5 results, and explored the effects of study exclusion in sensitivity analyses.
6
7
8

9
10 We also used sensitivity analysis to investigate the robustness of the meta-analyses
11 models. We variously excluded lower quality studies (score of ≤ 4.0), one study conducted
12 outside the United States (Australia), studies that integrated diabetes care, studies which
13 considered lifestyle risk factors, and studies of less than one-year duration. Publication bias,
14 which reflects the tendency for smaller studies to be published in the literature only when
15 findings are positive, was assessed visually using funnel plots [24]. All calculations were
16 performed in Stata version 12 (StataCorp, College Station, TX, USA) using the 'metan',
17 'metareg' and 'metafunnel' commands. Effects were considered statistical significant when the
18 associated 95% confidence intervals did not include zero and heterogeneity was considered
19 statistically significant where the associated P-value was less than 0.05.
20
21
22
23
24
25
26
27
28
29
30
31
32
33

34 RESULTS

35
36 Figure 1 presents a flowchart summarizing identification of potentially relevant studies, and
37 those included and excluded. Our search strategy identified 264 citations after duplicates
38 were removed. Of these, 246 citations were excluded after the first screening of titles and/or
39 abstracts for inclusion and exclusion criteria, leaving 18 citations for a second full text
40 screening. After further assessment, 11 citations were excluded for reasons listed in figure 1
41 leaving seven RCTs for final inclusion in the systematic review. Most studies were excluded
42 for inadequate study design or intervention (i.e. did not qualify as collaborative care model),
43 and a couple of studies were excluded for being redundant duplicate citations and for
44 incomplete data available for extraction (list of excluded citations and reasons; appendix
45 pages 3-4).
46
47
48
49
50
51
52
53
54
55
56
57
58
59
60

<< Figure 1 >>

Descriptive data synthesis

Table 1 presents study characteristics of seven RCTs included for review, which were published between 2004 and 2013. All studies except one [25] were conducted in the United States. Major inclusion criteria were various case definitions of diabetes in five studies [16, 26-29], diabetes and/or coronary heart disease (CHD) in two studies [17, 25], and co-morbid clinically relevant depression in all studies. Major exclusion criteria were cognitive impairment in four studies [16, 17, 28, 29], co-morbid psychiatric disorder or suicidal ideation in four studies [17, 27-29], alcohol problems in two studies [27, 29], and living in residential care in two studies [17, 25], among others. The sample sizes ranged from 58 to 417, resulting in a total of 1895 participants for depression outcomes and 1556 participants for HbA1c outcome across studies. Mean age of the samples ranged from 54 to 71 years. All of the study samples contained both male and female participants. Baseline mean depression scores ranged from 15.6 to 19.7 by the CES-D 20 [26], from 9.9 to 11.6 by the PHQ-9 [16, 25], and from 1.4 to 1.7 by the SCL-20 [17, 27-29]. Baseline mean HbA1c levels ranged from 6.9 to 9.1%. Defining features of collaborative care models investigated were a case manager/officer (usually a nurse or non-physician mental health worker for co-ordination of care) with proactive follow-ups in all studies, a structured management plan delivered within a stepped care framework and relapse prevention in four studies [17, 27-29], an integrated diabetes care program in three studies [16, 17, 26], and consideration for lifestyle risk factors in two studies [17, 25]. Control conditions were “usual care” in four studies [16, 25, 26, 29], whereas usual care was enhanced in the three other studies [17, 27, 28]. Trial durations ranged from 12 to 52 weeks. Primary outcomes were depression score assessed by the CES-D

20 in one study [26], by the PHQ-9 in two studies [16, 25], and by the SCL-20 in four studies [17, 27-29]; and glycaemic control by HbA1c in all of the studies. Mean quality scores ranged from 3.5 to 5.5, and all but three studies [25, 26, 29] received a score of 4.5 or higher.

<< Table 1 >>

Quantitative data synthesis

Effect of collaborative care on depression

Figure 2 presents the SMD in depression outcomes after collaborative care between the treatment and control groups. Collaborative care significantly improved standardised depression outcomes compared with control conditions (pooled SMD was -0.32 [95% CI: -0.53 to -0.11]). There was statistical heterogeneity between studies (I-squared=79.0%, $P<0.001$) that was mostly a result of variation in the degree of benefit favouring collaborative care in all but one study [27], which had significant between-group differences in mean depression scores at baseline. Correcting for these differences substantially changed the SMD for that study (from 0.00 [95% CI: -0.20 to 0.20] to -0.60 [95% CI: -0.81 to -0.39]) in a sensitivity analysis. In addition, the sensitivity analyses presented in table 2 shows that the pooled SMD was substantially changed only after exclusion of lower quality studies (decreased to -0.17 [95% CI: -0.35 to 0.00]). A funnel plot was produced and confirmed widespread heterogeneity of effect estimates between studies, but did not suggest any publication bias (appendix page 5).

<< Figure 2 >>

<< Table 2 >>

Effect of collaborative care on HbA1c

Figure 3 presents the WMD in HbA1c level after collaborative care between the treatment and control groups. Collaborative care significantly reduced HbA1c level compared with control conditions (pooled WMD was -0.33% [95% CI: -0.66% to -0.00%]). There was statistical heterogeneity between studies (I-squared=72.9%, P=0.001) that was mostly a result of variation in the degree of benefit favouring collaborative care in all but two studies [28, 29]. The sensitivity analyses presented in table 3 shows that the pooled WMD was slightly decreased in the fixed effect model (-0.21 [95% CI: -0.37 to -0.05]), but no longer statistically significant after each of the various studies was excluded. This was particularly so after exclusion of three studies that integrated diabetes care (decreased to -0.07 [95% CI: -0.35 to 0.21]). A funnel plot was produced and confirmed widespread heterogeneity of effect estimates between studies, but did not suggest any publication bias (appendix page 6).

<< Figure 3 >>

<< Table 3 >>

Effect of depression remission on HbA1c

Figure 4 presents a scatter plot displaying the association between the SMD in depression outcomes and the WMD in HbA1c values in each study. Results of a meta-regression model suggest that the SMD for depression scores failed to predict the WMD in HbA1c values across studies (P=0.828, coefficient was 0.19 [95% CI: -1.93 to 2.31]).

<< Figure 4 >>

DISCUSSION

Summary of evidence

1
2
3 Based on limited evidence from short-to-medium term RCTs predominately conducted in
4 the United States, our results suggest that collaborative care for depression significantly
5 improves both depression and glycaemia outcomes in people with co-morbid depression and
6 diabetes. Our results for better glycaemic control are novel and more comprehensive than
7 those published from previous meta-analyses because we sought and obtained raw
8 unpublished data from the authors of three studies [27-29]. Furthermore, we found evidence
9 from a sensitivity analysis that future high-quality RCTs [30] will likely strengthen rather
10 than weaken this evidence base. The size of the effect of collaborative care on depression and
11 HbA1c outcomes that can be expected in practice is small-to-moderate, but comparable with
12 pharmacological, psychological and behavioural therapies alone [13, 14, 31, 32], and likely to
13 be clinically relevant. For instance, several of the RCTs we reviewed have also shown that
14 collaborative care for depression in people with co-morbid diabetes is more effective than
15 usual care for improving functional health outcomes [33] and were cost effective [34, 35],
16 consistent with previous economic modelling [36]. In addition, a recent meta-analysis found a
17 positive dose-response trend between HbA1c level and adverse cardiovascular outcomes
18 [37]. This suggests that improvements in glycaemic control from collaborative care for
19 depression could theoretically protect patients with co-morbid diabetes against future
20 cardiovascular risk.

21
22 In contrast, we found no evidence to suggest that improved depression outcomes results in
23 better glycaemic control (lower HbA1c values) among people with co-morbid diabetes. This
24 null finding for reversibility of the effect of depression on glycaemia weakens the evidence
25 base for causality in terms of worsening the burden of diabetes. Alternatively, collaborative
26 care for depression may improve glycaemia in people with diabetes by increasing self-
27 management, independent of the depression prognosis. For example, collaborative care for
28 depression [17] was more effective than usual care for improving blood pressure and blood
29
30
31
32
33
34
35
36
37
38
39
40
41
42
43
44
45
46
47
48
49
50
51
52
53
54
55
56
57
58
59
60

1
2
3 glucose self-monitoring rates [38]. Quality improvement strategies for diabetes care that
4
5 promote glucose self-monitoring among patients can significantly improve HbA1c level
6
7 (SMD was 0.57% [0.31% to 0.83]) [39]. Indeed, evidence from our sensitivity analysis
8
9 showed that the effect of collaborative care on HbA1c was almost entirely confined to the
10
11 three studies that integrated diabetes care within the collaborative care model [16, 17, 26].
12
13 Second, none of the RCTs we reviewed properly integrated lifestyle intervention, as per the
14
15 current global guideline for effective management of type 2 diabetes,[40] within the
16
17 collaborative care. In high-income countries like the United States and Australia, depression
18
19 is associated with overweight or obesity, physical inactivity, smoking cigarettes and drinking
20
21 excessive amounts of sugar-sweetened and alcoholic beverages [41, 42], all of which are
22
23 well-established lifestyle risk factors for diabetes. Indeed, there is international consensus
24
25 supporting the effectiveness of lifestyle intervention in the prevention and management of
26
27 type 2 diabetes [40]. In addition, previous systematic reviews of RCTs have shown that
28
29 exercise (an integral component of lifestyle intervention) is effective for improving both
30
31 depression score (SMD was -0.82 [95% CI: -1.12 to -0.51]) and HbA1c level (WMD was -
32
33 0.67% [95% CI: -0.84 to -0.49%]) [43, 44], and the size of these effects are substantially
34
35 larger than what we found for collaborative care for depression. There is now sufficient
36
37 evidence to suggest that diabetes care and lifestyle intervention integrated within
38
39 collaborative care for depression would be the most effective way to manage care for co-
40
41 morbid depression and diabetes.
42
43
44
45
46
47
48
49

50 Limitations

51
52 Several limitations require further consideration. Since only a small number of short-to-
53
54 medium term studies predominately conducted in the United States were included, the
55
56 findings of this review may not be relevant to health care settings in other countries, requiring
57
58
59
60

1
2
3 further research. In particular, health care systems in most countries are not properly set up to
4 optimize the co-ordination between practitioners [45]. Integration of therapies including
5 collaborative care, diabetes care and lifestyle intervention is required to effectively manage
6 co-morbid depression diabetes. Secondly, baseline mean HbA1c level was close to the upper
7 limit of the normal range in several studies, which would have underestimated the effect size
8 for, and therapeutic benefit of, collaborative care for glycaemic control. Finally, reviewer-
9 level limitations include incomplete retrieval of information for several of the 11 citations
10 excluded, and the existence of other relevant studies not identified with our search strategy
11 resulting in bias. However, the results and conclusions reported in most of the excluded
12 studies were in line with those reported here, search strategy bias was unlikely.
13
14
15
16
17
18
19
20
21
22
23
24
25
26

27 Conclusions

28
29 Limited evidence from short-to-medium term RCTs predominately conducted in the
30 United States suggest that collaborative care for depression significantly improves both
31 depression and glycaemia outcomes, independently, in people with co-morbid depression and
32 diabetes. Future research should investigate the effectiveness, feasibility and appropriateness
33 of collaborative care integration with diabetes care and lifestyle intervention for co-morbid
34 depression and diabetes, and other co-morbid cardiovascular risk conditions, in routine
35 clinical practice in specific health care settings worldwide.
36
37
38
39
40
41
42
43
44
45
46
47
48
49
50
51
52
53
54
55
56
57
58
59
60

1
2
3 **Figure 1: Flowchart summarizing identification of studies included for review.**
4

5 **Figure 2: SMD in depression outcomes after collaborative care between the treatment**
6 **and control groups.**
7
8

9
10 **Figure 3: WMD in HbA1c level after collaborative care between the treatment and**
11 **control groups.**
12

13
14 **Figure 4: Scatter plot displaying the association between the SMD in depression**
15 **outcomes and the WMD in HbA1c values in each study.**
16
17
18

19
20
21 **Appendix page 5: Funnel plot assessing symmetry of 7 RCTs on effectiveness of**
22 **collaborative care for depression outcome.**
23

24
25 **Appendix page 6: Funnel plot assessing symmetry of 7 RCTs on effectiveness of**
26 **collaborative care for improving HbA1c outcome.**
27
28
29
30
31
32
33
34
35
36
37
38
39
40
41
42
43
44
45
46
47
48
49
50
51
52
53
54
55
56
57
58
59
60

ACKNOWLEDGMENTS

Authorship order is according to percentage contribution. EA is guarantor of the paper, taking responsibility for the integrity of the work as a whole, from inception to published article. EA conceived and designed the review, identified studies for inclusion, extracted and interpreted data, and drafted the article. PF analysed and interpreted data, and revised the article. JF extracted and interpreted data, and revised the article. All authors approved the final completed article. We are grateful to Mrs Rohini Patil for her work on developing and conducting the electronic database searches.

COMPETING INTERESTS

EA has received honoraria for speaking at events for Eli Lilly Australia Pty Ltd (Lilly).

REFERENCES

1. Murray CJ, Vos T, Lozano R, *et al.* Disability-adjusted life years (DALYs) for 291 diseases and injuries in 21 regions, 1990-2010: a systematic analysis for the Global Burden of Disease Study 2010. *Lancet*. 2012 Dec 15;380(9859):2197-223.
2. International Diabetes Federation. IDF Diabetes Atlas. 5th Edn. © 2013 International Diabetes Federation, 2013.
3. Atlantis E. Excess burden of type 1 and type 2 diabetes due to psychopathology. *J Affect Disord*. 2012 Oct;142 Suppl:S36-41.
4. Lin EHB, Von Korff M, Consortium WWS. Mental disorders among persons with diabetes-Results from the World Mental Health Surveys. *J Psychosom Res*. 2008 Dec;65(6):571-80.
5. Moussavi S, Chatterji S, Verdes E, *et al.* Depression, chronic diseases, and decrements in health: results from the World Health Surveys. *Lancet*. 2007 Sep 8;370(9590):851-8.
6. Lin EHB, Katon W, Von Korff M, *et al.* Relationship of depression and diabetes self-care, medication adherence, and preventive care. *Diabetes care*. 2004 Sep;27(9):2154-60.
7. Atlantis E, Goldney RD, Eckert KA, Taylor AW, Phillips P. Trends in health-related quality of life and health service use associated with comorbid diabetes and major depression in South Australia, 1998-2008. *Social psychiatry and psychiatric epidemiology*. 2012 Jun;47(6):871-7.
8. Lin EHB, Rutter CM, Katon W, *et al.* Depression and Advanced Complications of Diabetes - A prospective cohort study. *Diabetes care*. 2010 Feb;33(2):264-9.

- 1
2
3 9. Park M, Katon WJ, Wolf FM. Depression and risk of mortality in individuals with
4 diabetes: a meta-analysis and systematic review. *General hospital psychiatry*. 2013
5 5//;35(3):217-25.
6
7
8
9
10 10. Molosankwe I, Patel A, Gagliardino JJ, Knapp M, McDaid D. Economic aspects of
11 the association between diabetes and depression: A systematic review. *Journal of Affective*
12 *Disorders*. 2012 Oct;142:S42-S55.
13
14
15
16
17 11. National Institute for Health and Clinical Excellence. NICE Clinical Guideline 91.
18 Depression in adults with a chronic physical health problem. Treatment and management.
19 London2009.
20
21
22
23
24 12. Gilbody S, Bower P, Fletcher J, Richards D, Sutton AJ. Collaborative care for
25 depression - A cumulative meta-analysis and review of longer-term outcomes. *Arch Intern*
26 *Med*. 2006 Nov 27;166(21):2314-21.
27
28
29
30
31 13. Van der Feltz-Cornelis CM, Nuyen J, Stoop C, *et al*. Effect of interventions for major
32 depressive disorder and significant depressive symptoms in patients with diabetes mellitus: a
33 systematic review and meta-analysis. *General hospital psychiatry*. 2010 Jul-Aug;32(4):380-
34 95.
35
36
37
38
39
40 14. Ekers D, Murphy R, Archer J, *et al*. Nurse-delivered collaborative care for depression
41 and long-term physical conditions: A systematic review and meta-analysis. *Journal of*
42 *Affective Disorders*. 2013 Jul;149(1-3):14-22.
43
44
45
46
47 15. Huang Y, Wei X, Wu T, Chen R, Guo A. Collaborative care for patients with
48 depression and diabetes mellitus: a systematic review and meta-analysis. *BMC Psychiatry*.
49 2013;13:260.
50
51
52
53
54
55
56
57
58
59
60

16. Bogner HR, Morales KH, de Vries HF, Cappola AR. Integrated management of type 2 diabetes mellitus and depression treatment to improve medication adherence: a randomized controlled trial. *Annals of family medicine*. 2012 2012;10(1):15-22.
17. Katon WJ, Lin EH, Von Korff M, *et al*. Collaborative care for patients with depression and chronic illnesses. *The New England journal of medicine*. 2010 Dec 30;363(27):2611-20.
18. CRD's guidance for undertaking reviews in health care. © Centre for Reviews and Dissemination University of York 2008 Published by CRD 2009.
19. Schulz KF, Altman DG, Moher D. CONSORT 2010 statement: updated guidelines for reporting parallel group randomised trials. *BMJ*. 2010;340:c332.
20. Higgins JPT, Green S. *Cochrane Handbook for Systematic Reviews of Interventions* Version 5.1.0 [updated March 2011]. The Cochrane Collaboration, 2011 Available from www.cochrane-handbook.org [serial on the Internet]. editors.
21. DerSimonian R, Laird N. Meta-analysis in clinical trials. *Control Clin Trials*. 1986 Sep;7(3):177-88.
22. Higgins JP, Thompson SG, Deeks JJ, Altman DG. Measuring inconsistency in meta-analyses. *BMJ*. 2003 Sep 6;327(7414):557-60.
23. Higgins JP, Thompson SG. Quantifying heterogeneity in a meta-analysis. *Stat Med*. 2002 Jun 15;21(11):1539-58.
24. Egger M, Davey Smith G, Schneider M, Minder C. Bias in meta-analysis detected by a simple, graphical test. *BMJ*. 1997 Sep 13;315(7109):629-34.
25. Morgan MAJ, Coates MJ, Dunbar JA, *et al*. The TrueBlue model of collaborative care using practice nurses as case managers for depression alongside diabetes or heart disease: A randomised trial. *BMJ Open*. 2013 //;3(1).

- 1
2
3 26. Bogner HR, de Vries HF. Integrating type 2 diabetes mellitus and depression
4 treatment among African Americans: a randomized controlled pilot trial. *The Diabetes*
5 *educator*. 2010 Mar-Apr;36(2):284-92.
6
7
8
9
10 27. Ell K, Katon W, Xie B, *et al*. Collaborative care management of major depression
11 among low-income, predominantly hispanic subjects with diabetes: A randomized controlled
12 trial. *Diabetes care*. 2010 April;33(4):706-13.
13
14
15
16 28. Katon WJ, Korff M, Lin EH, *et al*. The Pathways Study: a randomized trial of
17 collaborative care in patients with diabetes and depression. *Archives of general psychiatry*
18 [serial on the Internet]. 2004; 61(10): Available from:
19 <http://onlinelibrary.wiley.com/o/cochrane/clcentral/articles/912/CN-00491912/frame.html>.
20
21
22
23
24
25
26 29. Williams Jr JW, Katon W, Lin EHB, *et al*. The effectiveness of depression care
27 management on diabetes-related outcomes in older patients. *Annals of Internal Medicine*.
28 2004 15 Jun;140(12):1015-24+I-51.
29
30
31
32
33 30. Johnson JA, Al Sayah F, Wozniak L, *et al*. Controlled trial of a collaborative primary
34 care team model for patients with diabetes and depression: Rationale and design for a
35 comprehensive evaluation. *BMC health services research*. 2012;12:258-.
36
37
38
39
40 31. Baumeister H, Hutter N, Bengel J. Psychological and pharmacological interventions
41 for depression in patients with diabetes mellitus and depression. *The Cochrane database of*
42 *systematic reviews*. 2012;12:CD008381.
43
44
45
46
47 32. Avery L, Flynn D, van Wersch A, Sniehotta FF, Trenell MI. Changing physical
48 activity behavior in type 2 diabetes: a systematic review and meta-analysis of behavioral
49 interventions. *Diabetes care*. 2012 Dec;35(12):2681-9.
50
51
52
53
54
55
56
57
58
59
60

- 1
2
3 33. Von Korff M, Katon WJ, Lin EH, *et al.* Functional outcomes of multi-condition
4 collaborative care and successful ageing: results of randomised trial. *BMJ (Clinical research*
5 *ed)*. 2011;343:d6612.
6
7
8
9
10 34. Hay JW, Katon WJ, Ell K, Lee PJ, Guterman JJ. Cost-effectiveness analysis of
11 collaborative care management of major depression among low-income, predominantly
12 Hispanics with diabetes. *Value in health : the journal of the International Society for*
13 *Pharmacoeconomics and Outcomes Research*. 2012 Mar-Apr;15(2):249-54.
14
15
16
17
18 35. Katon W, Russo J, Lin EHB, *et al.* Cost-effectiveness of a multicondition
19 collaborative care intervention. *Archives of General Psychiatry*. 2012 May;69(5):506-14.
20
21
22
23
24 36. Jacob V, Chattopadhyay SK, Sipe TA, *et al.* Economics of collaborative care for
25 management of depressive disorders: a community guide systematic review. *American*
26 *journal of preventive medicine*. 2012 May;42(5):539-49.
27
28
29
30 37. Zhang Y, Hu G, Yuan Z, Chen L. Glycosylated hemoglobin in relationship to
31 cardiovascular outcomes and death in patients with type 2 diabetes: a systematic review and
32 meta-analysis. *PloS one*. 2012;7(8):e42551.
33
34
35
36
37 38. Lin EH, Von Korff M, Ciechanowski P, *et al.* Treatment adjustment and medication
38 adherence for complex patients with diabetes, heart disease, and depression: a randomized
39 controlled trial. *Annals of Family Medicine*. 2012;10(1):6-14.
40
41
42
43
44 39. Tricco AC, Ivers NM, Grimshaw JM, *et al.* Effectiveness of quality improvement
45 strategies on the management of diabetes: a systematic review and meta-analysis. *Lancet*.
46 2012 Jun 16;379(9833):2252-61.
47
48
49
50
51 40. International Diabetes Federation, Clinical Guidelines Task Force. Global Guideline
52 for Type 2 Diabetes. © International Diabetes Federation, 2012.
53
54
55
56
57
58
59
60

- 1
2
3
4
5
6
7
8
9
10
11
12
13
14
15
16
17
18
19
20
21
22
23
24
25
26
27
28
29
30
31
32
33
34
35
36
37
38
39
40
41
42
43
44
45
46
47
48
49
50
51
52
53
54
55
56
57
58
59
60
41. Strine TW, Mokdad AH, Dube SR, *et al.* The association of depression and anxiety with obesity and unhealthy behaviors among community-dwelling US adults. *Gen Hosp Psychiatry.* 2008 Mar-Apr;30(2):127-37.
42. Shi Z, Taylor AW, Wittert G, Goldney R, Gill TK. Soft drink consumption and mental health problems among adults in Australia. *Public Health Nutr.* 2010 Jul;13(7):1073-9.
43. Rimer J, Dwan K, Lawlor DA, *et al.* Exercise for depression. *The Cochrane database of systematic reviews.* 2012;7:CD004366.
44. Umpierre D, Ribeiro PA, Kramer CK, *et al.* Physical activity advice only or structured exercise training and association with HbA1c levels in type 2 diabetes: a systematic review and meta-analysis. *JAMA : the journal of the American Medical Association.* 2011 May 4;305(17):1790-9.
45. Roberts RG, Gask L, Arndt B, *et al.* Depression and diabetes: The role and impact of models of health care systems. *Journal of Affective Disorders.* 2012;142:S80-8.

1
2
3
4
5
6
7
8
9
10
11
12
13
14
15
16
17
18
19
20
21
22
23
24
25
26
27
28
29
30
31
32
33
34
35
36
37
38
39
40
41
42
43
44
45
46
47
48
49
50
51
52
53
54
55
56
57
58
59
60

For peer review only

TABLE 2: Characteristics of randomised controlled trials reviewed

adjacent.....continued →

Study identification	Country	Sample size	Population		Men (%); Mean age (years)	Baseline mean depression score		Baseline mean HbA1c (%)	
			Major inclusion criteria (all)	Major exclusion criteria (any)		Treated	Controls	Treated	Controls
Bogner et al, 2010 ²⁶	United States	58	Aged ≥50 years, recent HbA1c >7 or an oral hypoglycaemic prescription within past year, diagnosed depression or an antidepressant prescription within past year	None specified	16; 60	15.6	19.7	7.3	7.3
Bogner et al, 2012 ¹⁶	United States	180	Aged ≥30 years, diagnosis of type 2 diabetes and current oral hypoglycaemic prescription, current antidepressant prescription	No informed consent, cognitive impairment (Mini-Mental State Examination <21), residence in care facility providing medications, unwillingness or inability to use the Medication Event Monitoring System	32; 57	10.6	9.9	7.2	7.0
Ell et al, 2010 ^{27*}	United States	387	Aged ≥18 years, "with diabetes", one of two cardinal depressive symptoms most days and depression score ≥10 by the PHQ-9, informed consent	Acute suicidal ideation, score of ≥8 by the Alcohol Use Disorders Identification Test, inability to speak Spanish or English	18; 54	1.7	1.4	9.0	9.1
Katon et al, 2004 ^{28*}	United States	329	Diabetes (by registry), depression score of ≥10 by the PHQ-9 at first screening and score of ≥1.1 by the SCL-90 at second telephone screening, ambulatory, English speaking, adequate hearing for telephone interview, planned continued enrolment in the clinic during the next year	Currently in care of psychiatrist, diagnosed bipolar disorder or schizophrenia, current antipsychotic or mood stabilizer medications, symptoms of dementia	35; 58	1.7	1.6	8.0	8.0
Katon et al, 2010 ¹⁷	United States	214	Diabetes, coronary heart disease or both (by registry), depression score of ≥3 by the PHQ-2 and ≥10 by the PHQ-9, ambulatory, spoke English, and planned be enrolled in the Health Maintenance Organization for 12 months	Terminal illness, residence in long-term facility, severe hearing loss, planned bariatric surgery within three months, pregnancy or breast feeding, ongoing psychiatric care, bipolar disorder or schizophrenia, current antipsychotic or mood stabilizer medications, symptoms of dementia	48; 57	1.7	1.7	8.1	8.0
Morgan et al, 2013 ²⁵	Australia	156 (glycaemia); 310 (depression)	Type 2 diabetes, coronary heart disease or both (by registry), depression score of ≥5 by the PHQ-9, informed consent	Aged <18 years, in residential care	55; 68	10.7	11.6	7.0	6.9

1
2
3
4
5
6
7
8
9
10
11
12
13
14
15
16
17
18
19
20
21
22
23
24
25
26
27
28
29
30
31
32
33
34
35
36
37
38
39
40
41
42
43
44
45
46
47
48
49

26

Williams et al, 2004 ^{29*}	United States	232 (glycaemia); 417 (depression)	Diagnosed or treated diabetes or high blood sugar in past three years by self-report, current major depression or dysthymic disorder by structured clinical interview according to DSM-IV	Current drinking problem (score of ≥2 by the CAGE questionnaire), history of bipolar disorder or psychosis, ongoing psychiatric care, or severe cognitive impairment (score of <3 by questionnaire)	47; 71	1.7	1.7	7.3	7.3
-------------------------------------	---------------	--------------------------------------	---	---	--------	-----	-----	-----	-----

Abbreviations: HbA1c, glycated haemoglobin; CES-D, Center for Epidemiological Studies Depression scale; PHQ, Patient Health Questionnaire; SCL, Symptom Checklist; DSM-IV, Diagnostic and Statistical Manual of Mental Disorders, fourth edition
 *Raw data was provided by the author

For peer review only

→ adjacent.....continued

Treatments	Control conditions	Trial duration (weeks)	Outcomes (assessments)	Quality score (out of 6)
"Integrated care"; consisted of supervised case manager, patient-centred care, education and integrated care for depression and diabetes; three 30 min in person and two 15 min telephone follow-up sessions over four weeks	"Usual care"; and study assessments	12	Glycaemia (HbA1c); depression score (CES-D 20)	4.0
"Integrated care"; consisted of supervised case manager, patient-centred care, education and integrated care for depression and diabetes; three 30 min in person and two 15 min telephone follow-up sessions over three months	"Usual care"; and study assessments	12	Glycaemia (HbA1c); depression score (PHQ-9)	5.0
"Collaborative care"; consisted of supervised nurse case manager, patient-centred care, problem solving therapy, self-monitoring education, and coordination of care and services for depression and diabetes within a stepped-care framework; monthly telephone symptom monitoring, treatment maintenance and relapse prevention up to 12 months	"Enhanced usual care"; and patient and family-focused depression education pamphlets	52	Glycaemia (HbA1c); depression score (SCL-20)	5.5
"Collaborative care"; consisted of supervised nurse case manager, patient-centred care (initial choice of antidepressant or problem solving therapy), within a stepped-care framework; initial one hour visit, followed by twice monthly half-hour follow-ups (telephone or in-person) up to 12 weeks and referral to speciality care thereafter if necessary	"Usual care"; and advice to consult their physician for depression care	26	Glycaemia (HbA1c); depression score (SCL-20)	4.5
"Collaborative care"; consisted of supervised nurse case manager, "treat-to-target program" integrated care for specific conditions, within a stepped-care framework, motivational problem solving and goal setting for self-care (including exercise, and "The Depression Helpbook", video and written material); structured visits every two to three weeks, and maintenance plan once targeted levels were achieved including telephone follow-ups every four weeks	"Enhanced usual care"; patients could self-refer to mental health care or be referred by primary care physicians at the clinic; and study assessments	52	Glycaemia (HbA1c); depression score (SCL-20)	5.0
"Collaborative care"; consisted of collaborative care trained nurse case manager, 45 min nurse consult every three months followed (for assessment of lifestyle, physical and biochemical risk factors, and referrals, self-care of depression and setting personal goals for review and discussion of educational resources), followed by a 15 min consult with their usual general practitioner	"Usual care"; baseline data collected retrospectively	26	Glycaemia (HbA1c); depression score (PHQ-9)	3.5

1
2
3
4
5
6
7
8
9
10
11
12
13
14
15
16
17
18
19
20
21
22
23
24
25
26
27
28
29
30
31
32
33
34
35
36
37
38
39
40
41
42
43
44
45
46
47
48
49

Collaborative care; consisted of trained nurse or psychologist case manager, patient-centred care, problem solving therapy, 20 min educational video tape and written material on late-life depression, and coordination of care and services for depression within a stepped-care framework; monthly telephone symptom monitoring, treatment maintenance and relapse prevention up to 12 months; diabetes care not specifically enhanced

"Usual care"; and study assessments

52

Glycaemia (HbA1c); depression score (SCL-20)

4.0

For peer review only

TABLE 2: Sensitivity analysis of randomized controlled trials of collaborative care → depression score outcome meta-analysis

	N studies	N sample	SMD	(95% confidence interval)	P-value for heterogeneity
Fixed effects model	7	1895	-0.31	(-0.40 to -0.22)	<0.001
Exclusion of 3 lower quality studies (score ≤4.0)	4	1110	-0.17	(-0.35 to 0.00)	0.101
Exclusion of 1 study outside the United States (Australia)	6	1585	-0.32	(-0.57 to -0.07)	<0.001
Exclusion of 3 studies that integrated diabetes care	4	1443	-0.30	(-0.62 to 0.01)	<0.001
Exclusion of 2 studies that considered lifestyle risk factors	5	1371	-0.30	(-0.59 to 0.00)	<0.001
Exclusion of 4 studies less than 1 year duration	3	1018	-0.34	(-0.68 to 0.01)	<0.001

Abbreviations: N, number; SMD, standardized mean difference

TABLE 3: Sensitivity analysis of randomised controlled trials of collaborative care → HbA1c outcome meta-analysis

	N studies	N sample	WMD	(95% confidence interval)	P-value for heterogeneity
Fixed effects model	7	1556	-0.21	(-0.37 to -0.05)	0.001
Exclusion of 3 lower quality studies (score ≤4.0)	4	1110	-0.32	(-0.81 to 0.17)	0.001
Exclusion of 1 study outside the United States (Australia)	6	1400	-0.31	(-0.68 to 0.07)	0.001
Exclusion of 3 studies that integrated diabetes care	4	1104	-0.07	(-0.35 to 0.21)	0.086
Exclusion of 2 studies that considered lifestyle risk factors	5	1186	-0.27	(-0.71 to 0.16)	0.002
Exclusion of 4 studies less than 1 year duration	3	833	-0.18	(-0.48 to 0.11)	0.189

Abbreviations: N, number; WMD, weighted mean difference

APPENDIX

PubMed search syntax

((("randomized controlled trials as topic"[MeSH Terms] OR randomised controlled trial OR RCT)) AND ((((((comprehensive health care[MeSH Terms]) OR collaborative care[Title/Abstract]) OR multidisciplinary care[Title/Abstract]) OR team care.[Title/Abstract]) OR integrated care[Title/Abstract]) OR complex care[Title/Abstract])) AND ((((((("blood glucose"[MeSH Terms] OR "diabetes complications"[MeSH Terms]) OR "hemoglobin a, glycosylated"[MeSH Terms]) OR hemoglobin A1c[Title/Abstract]) OR "Hemoglobin A, Glycosylated"[Mesh]) OR HbA1c[Title/Abstract]) OR glucose blood level[Title/Abstract]) OR diabetes[Title/Abstract] OR diabetic[Title/Abstract])) AND ((((((psychological distress[Title/Abstract]) OR hypervigilance[Title/Abstract]) OR nervousness[Title/Abstract]) OR anxieties[Title/Abstract]) OR anxious[Title/Abstract]) OR anxiety[MeSH Terms]) OR ("depressive disorder"[MeSH Terms] OR "depression"[MeSH Terms]))

Scopus search syntax

(TITLE-ABS-KEY(depression OR depressi* OR anxiety OR "psychological distress" OR hypervigilance OR nervousness OR anxieties OR melancholi* OR dysthymi*) AND TITLE-ABS-KEY("blood glucose" OR "hb a1c" OR "hemoglobin a glycosylated" OR glycaemic OR diabet*) AND TITLE-ABS-KEY("collaborative care" OR "multidisciplinary care" OR "transmural care" OR "complex care" OR "seamless care" OR "team care") AND TITLE-ABS-KEY(randomi?ed controlled trial OR rct))

1
2
3
4
5
6
7
8
9
10
11
12
13
14
15
16
17
18
19
20
21
22
23
24
25
26
27
28
29
30
31
32
33
34
35
36
37
38
39
40
41
42
43
44
45
46
47
48
49

Quality item checklist for randomised controlled trials reviewed (each worth 1 numerical point)

Study identification	Description of eligibility criteria adequate? (each worth 0.5 points): (1) inclusion criteria; (2) exclusion criteria	Randomization adequate? (each worth 0.5 points): (1) evidence suggesting "random" allocation; (2) evidence suggesting method used to generate random allocation sequence	Allocation concealment adequate?	Between-group prognostic indicators balanced? (each worth 0.5 points): (1) Depression score; (2) HbA1c level	Between-group drop-outs balanced?	Intention to treat analysis included?	Total quality score (out of 6)
Bogner et al, 2010	0.5	0.5	0.0	1.0	1.0	1.0	4.0
Bogner et al, 2012	1.0	1.0	0.0	1.0	1.0	1.0	5.0
Ell et al, 2010	1.0	1.0	1.0	0.5	1.0	1.0	5.5
Katon et al, 2004	1.0	1.0	0.0	1.0	1.0	0.5	4.5
Katon et al, 2010	1.0	1.0	0.0	1.0	1.0	1.0	5.0
Morgan et al, 2013	1.0	0.5	0.0	1.0	1.0	0.0	3.5
Williams et al, 2004	1.0	1.0	1.0	1.0	0.0	0.0	4.0

For peer review only

EXCLUDED CITATIONS (REASONS)

- 1
2
3
4
5
6
7
8
9
10
11
12
13
1. Ciechanowski PS, Russo JE, Katon WJ, *et al.* The association of patient relationship style and outcomes in collaborative care treatment for depression in patients with diabetes. *Medical care.* 2006;44(3):283-91.

(Redundant citation; duplicate publication)

- 14
15
16
17
18
19
20
21
22
2. Ell K, Aranda MP, Xie B, Lee PJ, Chou CP. Collaborative depression treatment in older and younger adults with physical illness: pooled comparative analysis of three randomized clinical trials. *American Journal of Geriatric Psychiatry.* 2010;18(6):520-30.

(Inadequate study design; meta-analysis of RCTs)

- 23
24
25
26
27
28
29
30
31
3. Fisher L, Polonsky W, Parkin CG, *et al.* The impact of blood glucose monitoring on depression and distress in insulin-naïve patients with type 2 diabetes. *Current Medical Research and Opinion.* 2011;27(SUPPL. 3):39-46.

(Inadequate collaborative care model; structured self-monitoring of blood glucose alone)

- 32
33
34
35
36
37
38
39
40
41
42
4. Lamers F, Jonkers CC, Bosma H, Knottnerus JA, van Eijk JT. Treating depression in diabetes patients: does a nurse-administered minimal psychological intervention affect diabetes-specific quality of life and glycaemic control? A randomized controlled trial. *J Adv Nurs.* 2011;67(4):788-99.

(Inadequate collaborative care model; psychological therapy alone)

- 43
44
45
46
47
48
49
50
51
5. Lin EH, Korff M, Ciechanowski P, *et al.* Treatment adjustment and medication adherence for complex patients with diabetes, heart disease, and depression: a randomized controlled trial. *Annals of family medicine;* 2012:6-14.

(Redundant citation; duplicate publication)

- 52
53
54
55
56
57
58
59
60
6. Naji S. Integrated care for diabetes: Clinical, psychosocial, and economic evaluation. *British Medical Journal.* 1994;308(6938):1208-12.

1
2
3 (Inadequate collaborative care model; not specifically for depression)

- 4
5 7. Solberg LI, Crain AL, Sperl-Hillen JM, *et al.* Care quality and implementation of the
6
7 Chronic Care Model: a quantitative study. *Annals of Family Medicine.*
8
9 2006;4(4):310-6.
10

11 (Inadequate study design; not an RCT)

- 12
13
14 8. Stiefel F, Zdrojewski C, Bel Hadj F, *et al.* Effects of a multifaceted psychiatric
15
16 intervention targeted for the complex medically ill: a randomized controlled trial.
17
18 *Psychotherapy & Psychosomatics.* 2008;77(4):247-56.
19

20 (Incomplete data for extraction, contacted author 4 Sep 2013)

- 21
22
23 9. Tapp H, Phillips SE, Waxman D, *et al.* Multidisciplinary team approach to improved
24
25 chronic care management for diabetic patients in an urban safety net ambulatory care
26
27 clinic. *Journal of the American Board of Family Medicine.* 2012;25(2):245-6.
28

29 (Inadequate study design; feasibility and study design)

- 30
31
32 10. Taveira TH, Dooley AG, Cohen LB, Khatana SA, Wu WC. Pharmacist-led group
33
34 medical appointments for the management of type 2 diabetes with comorbid
35
36 depression in older adults. *Ann Pharmacother.* 2011;45(11):1346-55.
37

38 (Inadequate collaborative care; lacked evidence of co-ordination of care)

- 39
40
41 11. Trief PM, Morin PC, Izquierdo R, *et al.* Depression and glycemic control in elderly
42
43 ethnically diverse patients with diabetes: the IDEATel project. *Diabetes Care.*
44
45 2006;29(4):830-5.
46

47 (Incomplete data for extraction, contacted author 5 Sep 2013)

1
2
3 Funnel plot assessing symmetry of 7 RCTs on effectiveness of collaborative care for
4
5 depression outcome
6
7
8
9
10
11
12
13
14
15
16
17
18
19
20
21
22
23
24
25
26
27
28
29
30
31
32
33
34
35
36
37
38
39
40
41
42
43
44
45
46
47
48
49
50
51
52
53
54
55
56
57
58
59
60

For peer review only

1
2
3 Funnel plot assessing symmetry of 7 RCTs on effectiveness of collaborative care for
4
5 improving HbA1c outcome
6
7
8
9
10
11
12
13
14
15
16
17
18
19
20
21
22
23
24
25
26
27
28
29
30
31
32
33
34
35
36
37
38
39
40
41
42
43
44
45
46
47
48
49
50
51
52
53
54
55
56
57
58
59
60

For peer review only



PRISMA 2009 Checklist

Section/topic	#	Checklist item	Reported on page #
TITLE			
Title	1	Identify the report as a systematic review, meta-analysis, or both.	1
ABSTRACT			
Structured summary	2	Provide a structured summary including, as applicable: background; objectives; data sources; study eligibility criteria, participants, and interventions; study appraisal and synthesis methods; results; limitations; conclusions and implications of key findings; systematic review registration number.	3
INTRODUCTION			
Rationale	3	Describe the rationale for the review in the context of what is already known.	4,5
Objectives	4	Provide an explicit statement of questions being addressed with reference to participants, interventions, comparisons, outcomes, and study design (PICOS).	5
METHODS			
Protocol and registration	5	Indicate if a review protocol exists, if and where it can be accessed (e.g., Web address), and, if available, provide registration information including registration number.	No
Eligibility criteria	6	Specify study characteristics (e.g., PICOS, length of follow-up) and report characteristics (e.g., years considered, language, publication status) used as criteria for eligibility, giving rationale.	5,6
Information sources	7	Describe all information sources (e.g., databases with dates of coverage, contact with study authors to identify additional studies) in the search and date last searched.	5
Search	8	Present full electronic search strategy for at least one database, including any limits used, such that it could be repeated.	Appendix 1
Study selection	9	State the process for selecting studies (i.e., screening, eligibility, included in systematic review, and, if applicable, included in the meta-analysis).	5,6
Data collection process	10	Describe method of data extraction from reports (e.g., piloted forms, independently, in duplicate) and any processes for obtaining and confirming data from investigators.	6
Data items	11	List and define all variables for which data were sought (e.g., PICOS, funding sources) and any assumptions and simplifications made.	7
Risk of bias in individual studies	12	Describe methods used for assessing risk of bias of individual studies (including specification of whether this was done at the study or outcome level), and how this information is to be used in any data synthesis.	6, appendix 2
Summary measures	13	State the principal summary measures (e.g., risk ratio, difference in means).	7

For peer review only - <http://bmjopen.bmj.com/site/about/guidelines.xhtml>



PRISMA 2009 Checklist

Synthesis of results	14	Describe the methods of handling data and combining results of studies, if done, including measures of consistency (e.g., I^2) for each meta-analysis.	7,8
----------------------	----	---	-----

Page 1 of 2

Section/topic	#	Checklist item	Reported on page #
Risk of bias across studies	15	Specify any assessment of risk of bias that may affect the cumulative evidence (e.g., publication bias, selective reporting within studies).	7, 8
Additional analyses	16	Describe methods of additional analyses (e.g., sensitivity or subgroup analyses, meta-regression), if done, indicating which were pre-specified.	Appendix 5,6

RESULTS

Study selection	17	Give numbers of studies screened, assessed for eligibility, and included in the review, with reasons for exclusions at each stage, ideally with a flow diagram.	8,9
Study characteristics	18	For each study, present characteristics for which data were extracted (e.g., study size, PICOS, follow-up period) and provide the citations.	23-26
Risk of bias within studies	19	Present data on risk of bias of each study and, if available, any outcome level assessment (see item 12).	Appendix 5,6
Results of individual studies	20	For all outcomes considered (benefits or harms), present, for each study: (a) simple summary data for each intervention group (b) effect estimates and confidence intervals, ideally with a forest plot.	10,11
Synthesis of results	21	Present results of each meta-analysis done, including confidence intervals and measures of consistency.	10,11
Risk of bias across studies	22	Present results of any assessment of risk of bias across studies (see Item 15).	10,11
Additional analysis	23	Give results of additional analyses, if done (e.g., sensitivity or subgroup analyses, meta-regression [see Item 16]).	27,28

DISCUSSION

Summary of evidence	24	Summarize the main findings including the strength of evidence for each main outcome; consider their relevance to key groups (e.g., healthcare providers, users, and policy makers).	11-13
Limitations	25	Discuss limitations at study and outcome level (e.g., risk of bias), and at review-level (e.g., incomplete retrieval of identified research, reporting bias).	13,14
Conclusions	26	Provide a general interpretation of the results in the context of other evidence, and implications for future research.	14

FUNDING

Funding	27	Describe sources of funding for the systematic review and other support (e.g., supply of data); role of funders for the systematic review.	None
---------	----	--	------



PRISMA 2009 Checklist

1
2
3
4
5
6
7
8
9
10
11
12
13
14
15
16
17
18
19
20
21
22
23
24
25
26
27
28
29
30
31
32
33
34
35
36
37
38
39
40
41
42
43
44
45
46
47
48
49

doi:10.1371/journal.pmed1000097

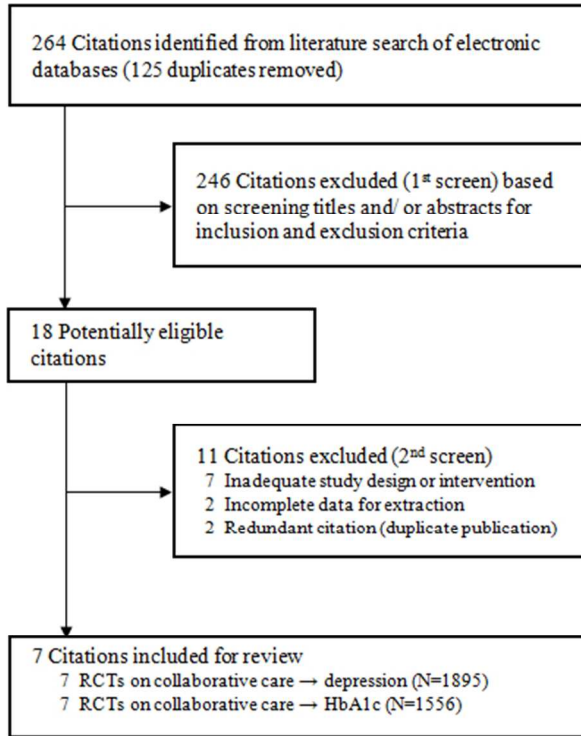
For more information, visit: www.prisma-statement.org.

Page 2 of 2

For peer review only

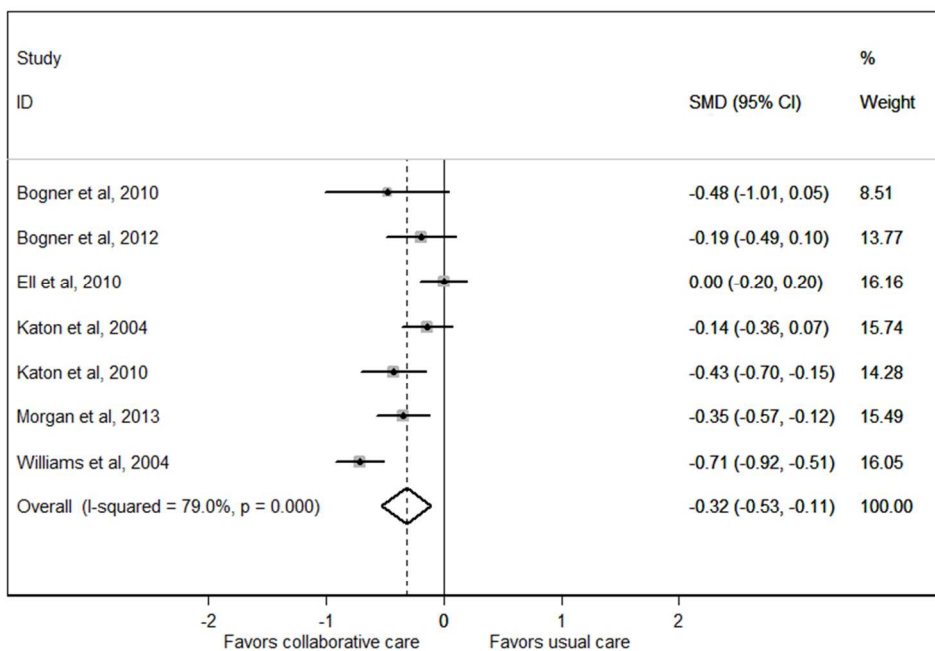
For peer review only - <http://bmjopen.bmj.com/site/about/guidelines.xhtml>

1
2
3
4
5
6
7
8
9
10
11
12
13
14
15
16
17
18
19
20
21
22
23
24
25
26
27
28
29
30
31
32
33
34
35
36
37
38
39
40
41
42
43
44
45
46
47
48
49
50
51
52
53
54
55
56
57
58
59
60



180x133mm (96 x 96 DPI)

ew only

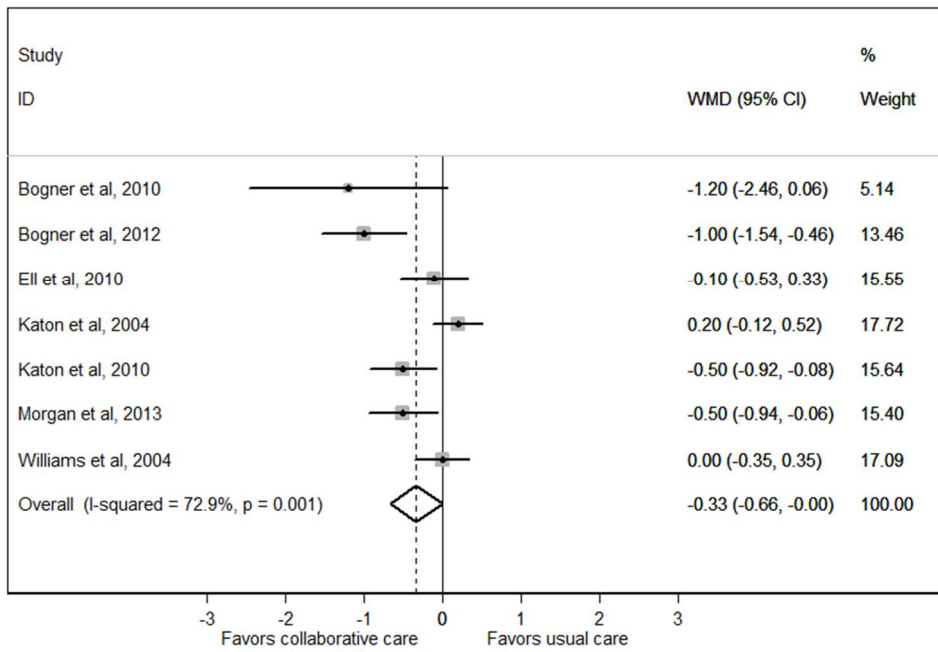


293x203mm (72 x 72 DPI)

view only

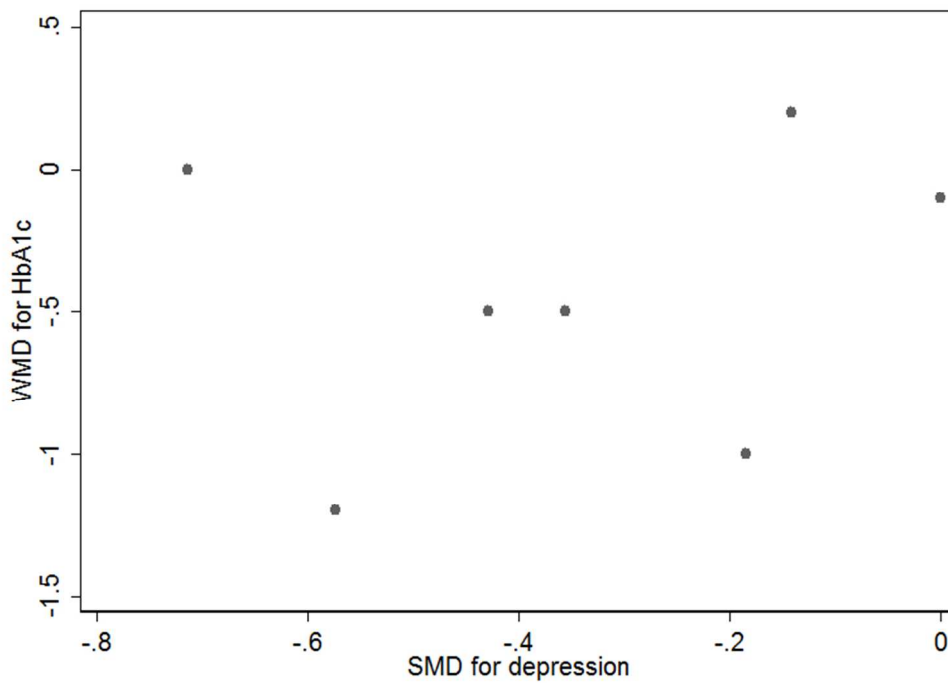
1
2
3
4
5
6
7
8
9
10
11
12
13
14
15
16
17
18
19
20
21
22
23
24
25
26
27
28
29
30
31
32
33
34
35
36
37
38
39
40
41
42
43
44
45
46
47
48
49
50
51
52
53
54
55
56
57
58
59
60

1
2
3
4
5
6
7
8
9
10
11
12
13
14
15
16
17
18
19
20
21
22
23
24
25
26
27
28
29
30
31
32
33
34
35
36
37
38
39
40
41
42
43
44
45
46
47
48
49
50
51
52
53
54
55
56
57
58
59
60



292x203mm (72 x 72 DPI)

view only

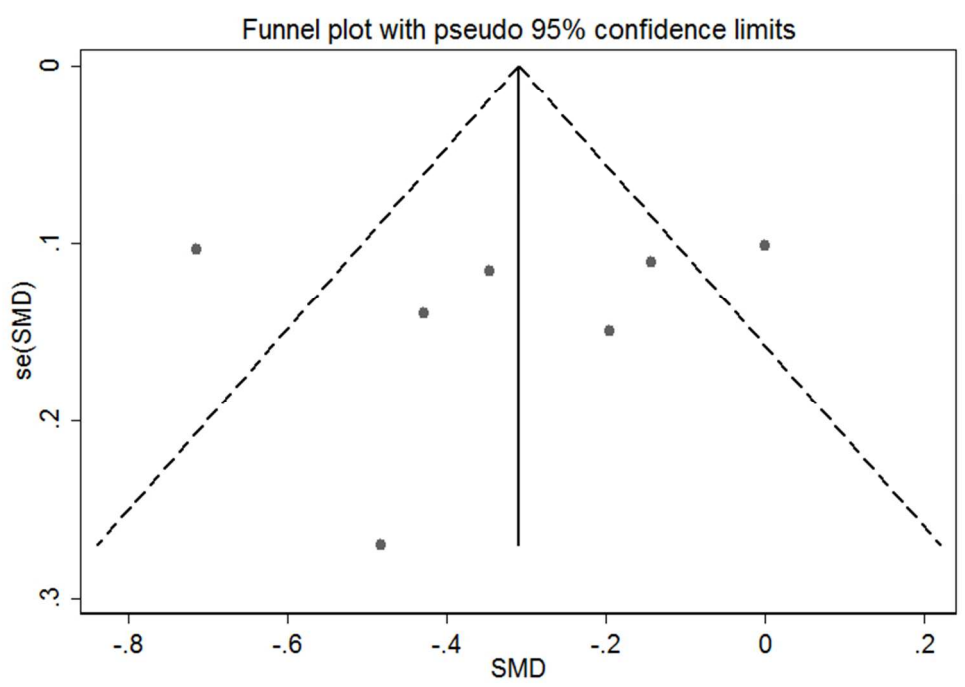


279x203mm (72 x 72 DPI)

view only

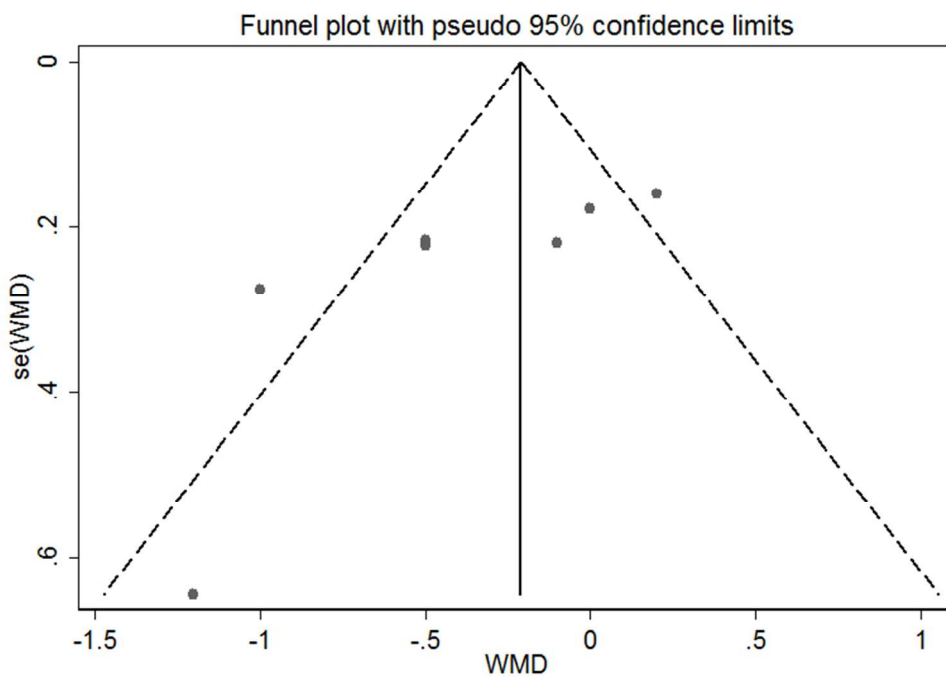
1
2
3
4
5
6
7
8
9
10
11
12
13
14
15
16
17
18
19
20
21
22
23
24
25
26
27
28
29
30
31
32
33
34
35
36
37
38
39
40
41
42
43
44
45
46
47
48
49
50
51
52
53
54
55
56
57
58
59
60

1
2
3
4
5
6
7
8
9
10
11
12
13
14
15
16
17
18
19
20
21
22
23
24
25
26
27
28
29
30
31
32
33
34
35
36
37
38
39
40
41
42
43
44
45
46
47
48
49
50
51
52
53
54
55
56
57
58
59
60



279x203mm (72 x 72 DPI)

view only



279x203mm (72 x 72 DPI)

view only

1
2
3
4
5
6
7
8
9
10
11
12
13
14
15
16
17
18
19
20
21
22
23
24
25
26
27
28
29
30
31
32
33
34
35
36
37
38
39
40
41
42
43
44
45
46
47
48
49
50
51
52
53
54
55
56
57
58
59
60