



The effect of a web based depression intervention on suicide ideation. Secondary outcome from a randomised controlled trial.

Journal:	<i>BMJ Open</i>
Manuscript ID:	bmjopen-2013-002886
Article Type:	Research
Date Submitted by the Author:	15-Mar-2013
Complete List of Authors:	Christensen, Helen; Black Dog Institute, University of New South Wales, School of Medicine Farrer, Lou; Australian National University, Centre for Mental Health Research Batterham, Philip; Australian National University, Centre for Mental Health Research Mackinnon, Andrew; University of Melbourne, Orygen Youth Health Griffiths, Kathleen; Australian National University, Centre for Mental Health Research Donker, Tara; Black Dog Institute, University of New South Wales, School of Medicine
Primary Subject Heading:	Public health
Secondary Subject Heading:	Mental health
Keywords:	Suicide & self-harm < PSYCHIATRY, Depression & mood disorders < PSYCHIATRY, Internet, Telephone

SCHOLARONE™
Manuscripts

The effect of a web based depression intervention on suicide ideation. Secondary outcome from a randomised controlled trial.

Helen Christensen¹, Lou Farrer², Philip J Batterham², Andrew Mackinnon³, Kathleen M Griffiths² and Tara Donker¹

¹*The Black Dog Institute, University of New South Wales, Sydney, NSW, Australia;*

²*Centre for Mental Health Research, Australian National University, Canberra, ACT,*

Australia; ³*Orygen Youth Health, University of Melbourne, Melbourne, VIC, Australia*

Corresponding author:

Helen Christensen

The Black Dog Institute, University of New South Wales, Hospital Road, Prince of Wales Hospital, Randwick 2031, Sydney, NSW, Australia

E: h.christensen@unsw.edu.au

P: +612 9382 9288

F: +61 2 9382 8208

Key words: Suicide, Depression, Telephone, Internet

Word count: 4,076

Abstract

Objectives: The effect of web-based interventions for depression on suicide ideation in call centres is not known. The aim of this study was to determine if web-based Cognitive Behaviour Therapy (CBT) with and without telephone support is effective in reducing suicide ideation compared to treatment as usual in a helpline. A secondary aim was to examine the factors that predict change in suicide ideation. Putative predictors included level of baseline depression, suicide behaviour, baseline anxiety and type of intervention.

Design: Randomised Controlled Trial

Setting: Lifeline, Australia's 24-hour telephone counselling service Participants: 155 callers to a national helpline service with moderate to high psychological distress.

Interventions: participants were recruited and randomised to receive either 6 weeks of Internet CBT plus weekly telephone follow-up; Internet CBT only; weekly telephone follow-up only; or a wait-list treatment as usual (TAU) control group.

Primary and secondary outcome measures: Suicidal ideation was measured using four items from the 28-item General Health Questionnaire (GHQ-28; [1]). Predictors of change in ideation were tested using logistic regression analysis.

Results: Regardless of intervention condition, participants showed significant reductions in suicidal ideation over twelve months ($p < 0.001$). Higher baseline suicidal behaviour decreased the odds of remission of suicidal ideation at post-intervention (OR: 0.409 ($p < 0.001$)). However, change in depression over the course of the interventions was associated with improvement in suicide ideation (OR: 1.165, $p < 0.001$).

1
2
3
4 Conclusions: Suicide ideation declines with and without proactive intervention.
5
6 Improvements in depression are associated with the resolution of suicide ideation.
7
8 Specific interventions focussing on suicide ideation should be further investigated.
9
10 TRIAL REGISTRATION: Controlled-Trials.com ISRCTN93903959.
11
12
13

14 **ARTICLE SUMMARY**

15 **Article focus:**

- 16 • To evaluate the effectiveness of a web-based Cognitive Behaviour Therapy
17 intervention on suicide ideation in a helpline.
18
- 19 • To examine predictors of suicide ideation resolution
20
21
22
23
24
25

26 **Key messages:**

- 27 • Irrespective of intervention condition, participants' suicidal ideation declined
28 over time at post-test, and six months. Declines in suicidal ideation remained
29 significant at 12 month follow-up
30
31
32
- 33 • Suicide ideation reduces significantly more in those individuals who also had
34 resolving depression.
35
36
- 37 • While CBT internet interventions are significantly more effective in resolving
38 depression symptoms compared to control conditions, these operate no more
39 successfully than current call centre practice in resolving suicide ideation.
40
41
42
43
44
45
- 46 • Our findings demonstrate the importance of not excluding suicidal participants
47 from interventions designed to target depression.
48
49
50

51 **Strengths and limitations of this study:**

- 52 • The study used a Randomised Controlled Trial.
53
54
55
56
57
58
59
60

- The addition of the TAU control condition is a significant improvement over previous trials.
- Because all scores were initially high at baseline, the lower scores on the second occasion of measurement may have been due to reversion to the mean.

For peer review only

INTRODUCTION

Suicide prevention interventions are delivered every day through crisis intervention lines and through chat in call centres. In Australia, Lifeline reports that over 50 high risk telephone calls are answered daily [2]. However, despite the load taken by suicide prevention crisis lines in responding to callers at risk, there has been little investigation of the role of crisis lines in reducing suicide risk, or in reducing risk factors associated with suicide risk, such as depression.

To date, the research evidence from suicide call centres has largely focussed on evaluating interventions using the telephone, and to our knowledge, only one randomised controlled trial (RCT) has been conducted. This study [3] evaluated the effects of two brief telephone psychotherapies in reducing general distress [Solution Focussed Brief Therapy (SFBT) and Common Factors Therapy (CFT)] compared to a waitlist control condition using 85 individuals recruited via a suicide hotline. Outcome measures included the Brief Psychiatric Rating Scale, and the Beck Depression Inventory. Drop out was high in the SFBT condition (50%) compared to the CFT condition (37%) and across both conditions drop out occurred before the first session. Relative to the waitlist control, significant reductions in several measures of depression and anxiety symptoms were found in participants who completed the interventions, with effect sizes estimated in the range of .67 and .93. However, outcomes on suicide specific measures were not reported. A highly cited, although uncontrolled study, used a follow-up design (pre-post outcomes) to evaluate the effectiveness of a crisis line for non-suicidal crisis callers (n=1617, of whom 801 provided follow-up data) [4]. Callers' levels of crisis and hopelessness were rated during the calls and found to decrease during the course of the call. In a second study, focussing on 1,085 participants who

1
2
3
4 were suicidal Gould et al. [5] found that levels of intent to die over the course of a call
5
6 decreased and that there were continuing falls in hopelessness and psychological pain
7
8 over the continuing weeks.
9

10
11
12
13
14
15 Web-based interventions are now more frequently used in call centres, and research of
16
17 their usefulness is emerging in community settings. Two studies of online e-health
18
19 applications targeting either risk factors for suicide (depression) or suicide ideation were
20
21 published in 2012. The first was an uncontrolled service evaluation which found a 30%
22
23 reduction in suicide ideas [6] over the course of a depression web program. The second
24
25 was a randomised controlled trial of an online intervention which examined the
26
27 effectiveness and cost effectiveness of an automated six module, six week, intervention
28
29 specifically targeting suicide ideation for individuals with mild to moderate suicidal
30
31 thoughts. The intervention was based on Cognitive Behaviour Therapy (CBT), with
32
33 Dialectical Behaviour Therapy, Problem Solving Therapy and Mindfulness Cognitive
34
35 Behaviour Therapy included. Significant reductions in suicidal thoughts were found
36
37 relative to Control condition. The mean incremental cost-effectiveness ratio (ICER) was
38
39 estimated to be €34,727 (US \$41,325) for an additional treatment response, indicating
40
41 annual cost savings per treatment responder [7].
42
43
44
45
46
47

48 In 2012, we published the results of a randomised controlled trial investigating
49
50 the effects of a web application in reducing depression and anxiety in a large call centre
51
52 [8, 9]. This trial compared four conditions: a treatment as usual condition (TAU), where
53
54 the participant could call the crisis line at any time; a telephone support service where
55
56 the participant was contacted for 10 minutes once a week for six weeks; a CBT internet
57
58
59
60

1
2
3
4 program for depression combined with a evidence-based depression information
5
6 website, and a combined condition which incorporated telephone call back and the web
7
8 programs. Both the web programs alone, and the web programs in combination with the
9
10 telephone call back, were effective at 12 months in reducing depression symptoms,
11
12 relative to TAU. This study also measured suicide ideation, and in this paper, we report
13
14 the results using this outcome measure.

15
16
17 Suicide ideation is a substantial risk factor for suicide attempt. Theories of
18
19 suicide causation point to the importance of depression and hopelessness in leading to
20
21 increased levels of suicide ideation and attempts (see [10]). We hypothesised that
22
23 suicide ideation would be reduced over time in those conditions which successfully
24
25 reduced depression. Accordingly, we first examined the effect of the four interventions
26
27 conditions on suicide ideation. For suicide ideation, we hypothesised that the web CBT
28
29 intervention focussing on reducing depression—with or without the telephone call
30
31 back— would result in significantly greater reduction of suicide ideation than the other
32
33 two conditions, which did not include interventions specifically aiming to reduce
34
35 depression. We then used logistic regression to explore which factors, in addition to
36
37 any effect of the intervention, predicted changes in suicide ideation at post-test. These
38
39 factors were baseline suicidality, baseline depression, baseline anxiety, age, gender,
40
41 education, workforce participation, and changes in depression and anxiety over the
42
43 course of the intervention (pre to post-test).
44
45
46
47
48
49
50
51

52 **METHOD**

53
54 Data for this study were collected as part of a randomized controlled trial of the
55
56 impact of a Web-based CBT and psychoeducation intervention on depression symptoms
57
58
59
60

1
2
3
4 [9]. The trial comprised four arms: (i) a Web-based CBT intervention; (ii) a Web-based
5
6 CBT intervention delivered in conjunction with a telephone support line; (iii) the
7
8 telephone support line alone, and (iv) TAU, which consisted of the opportunity to
9
10 contact the support line if needed.
11

12 13 **Participants**

14
15
16 Participants were 155 callers to Lifeline, Australia's 24-hour telephone
17
18 counselling service, recruited between July 2007 and January 2009. A total of 910
19
20 callers agreed to be screened by telephone. Of these, 142 (15.6%) were subsequently
21
22 unable to be contacted, 61 (7%) were later unwilling to participate, and 337 (37%) did
23
24 not meet eligibility criteria. Respondents were not eligible for inclusion in the trial if
25
26 they (1) scored less than 22 on the Kessler Psychological Distress Scale [11] (138/337,
27
28 41%), (2) had, by self-report, a diagnosis of schizophrenia or bipolar disorder (89,
29
30 26%), or (3) did not have Internet access (67, 20.0%). Ineligible participants were
31
32 offered brochures sent by mail containing information about the Web intervention used
33
34 in the trial. Of the 370 people eligible for inclusion in the trial, 155 completed informed
35
36 consent procedures and pre-intervention assessments, and were randomly assigned to
37
38 the trial conditions.
39
40
41
42
43

44 **Procedure**

45
46
47 Following screening and informed consent procedures, pre-intervention data
48
49 were obtained through a self-report questionnaire mailed to participants. A block
50
51 randomization procedure was used, with stratification based on site of recruitment and
52
53 severity of psychological distress at screening. Allocation of participants to trial
54
55 conditions was conducted independently by a research assistant not involved in the day-
56
57
58
59
60

1
2
3
4 to-day running of the trial. Following randomization, all participants were contacted by
5
6 telephone and were mailed the relevant materials for their allocated condition.
7
8

9 10 **Intervention and Trial Conditions**

11
12 The Web-only intervention consisted of Web-based psychoeducation (in week 1
13 provided by BluePages: bluepages.anu.edu.au) combined with Web-based CBT (in
14 weeks 2–6 provided by MoodGYM: moodgym.anu.edu.au). Both of these Web
15 programs have been shown to reduce depression symptoms in community users [12]. A
16 printed manual containing week-by-week instructions for accessing the Web programs
17 (via a login) was mailed to participants at the start of the trial.
18
19

20
21 In the Web with telephone support condition, participants completed the Web
22 intervention and also received a weekly 10-minute telephone call from a Lifeline
23 telephone counsellor. The purpose of these calls was to address any issues associated
24 with the participants' use of the intervention.
25
26

27
28 In the telephone call back only condition, participants received a weekly 10-minute
29 telephone call from a telephone counsellor. These scripted calls focused on various
30 environmental and lifestyle factors associated with depression.
31
32

33
34 In the TAU condition, participants received neither the call back nor Web interventions,
35 but were free to use the Lifeline counselling service as needed. Participants in this
36 condition were wait-listed to receive the Web-only intervention following completion of
37 the 6-month follow-up.
38
39
40
41
42
43
44
45
46
47
48
49
50
51
52
53
54
55
56
57
58
59
60

1
2
3
4 Participants in all 4 conditions were able to use the Lifeline telephone counselling
5 service as needed, which provided usual emergency or support services. Any use of this
6 service during the intervention period was additional to the 10-minute telephone calls
7 offered as part of the Web with telephone support and telephone support-only
8 intervention conditions. The 10-minute intervention calls were scripted and not intended
9 to provide any form of psychological or supportive counselling.
10
11
12
13
14
15
16

17 18 **Measures**

19 20 *Suicidal ideation*

21
22 Suicidal ideation was measured using four items from the 28-item General
23 Health Questionnaire (GHQ-28; [1]). The four questions measure suicidal ideation,
24 asking respondents to indicate how they have felt over the last few weeks. The first two
25 items: 'Have you recently felt that life is not worth living' and 'Have you recently found
26 yourself wishing you were dead and away from it all' were scored on the 4-point scale:
27 'Not at all', 'No more than usual', 'Rather more than usual' or 'Much more than usual'.
28 The remaining two items: 'Have you recently had thoughts of the possibility that you
29 might do away with yourself' and 'Have you recently found that the idea of taking your
30 own life kept coming into your mind' were scored on the 4-point scale: 'Definitely not',
31 'I don't think so', 'Has crossed my mind' or 'Definitely has'. Responses were then
32 categorised in a binary manner, with the negatively-worded response categories (Not at
33 all, No more than usual, definitely not, and I don't think so) scored with a 0, and the
34 positively-worded response categories scored with a 1. Binary scores for each item were
35 summed to provide a total scale score ranging from 0 to 4, with a higher score
36 indicating higher suicidal ideation. This scoring system is that used for all items and sub
37
38
39
40
41
42
43
44
45
46
47
48
49
50
51
52
53
54
55
56
57
58
59
60

1
2
3
4 scores of the GHQ-28, which has been validated in Australian populations [13]. The
5
6 four suicide items from the GHQ-28 have been used extensively by Goldney and
7
8 colleagues to assess suicidal ideation in a number of Australian samples [14-16]. These
9
10 items have been validated relative to other well established measures of suicidal intent
11
12 and hopelessness [17, 18].
13

14 15 16 17 *Predictor variables* 18

19
20 Depression symptoms were measured by the Center for Epidemiologic Studies
21
22 Depression Scale (CES-D)[19], a widely used, 20 item scale with strong reliability and
23
24 validity [19, 20], with scores ranging from 0 to 60. Anxiety symptoms were assessed
25
26 using the 14-item anxiety scale from the Depression, Anxiety and Stress Scales (DASS-
27
28 A;[21]. Each of these items is rated on a four-point scale from 0 (“did not apply to me at
29
30 all”) to 4 (“applied to me most of the time”), with total scores ranging from 0 to 42. The
31
32 reliability and validity of the DASS-A scale has been demonstrated previously ([22,
33
34 23]).
35
36

37
38 Demographic variables including age, gender, educational attainment and
39
40 workforce participation were assessed by self-report in the pre-test survey. Educational
41
42 attainment was based on two items assessing highest level of education, which were
43
44 used to form an estimate of total number of years of education. Workforce participation
45
46 was based on an item assessing employment status, with “unemployed” and “not in the
47
48 labour force” categorised as non-participation, and employed “full-time” or “part-time”
49
50 categorised as participation.
51
52

53 54 55 **Statistical analyses** 56 57 58 59 60

1
2
3
4 Differential changes in suicide ideation across the four conditions were assessed
5 using mixed model repeated measures analysis of variance. Within-person variation was
6 modeled using an unstructured covariance matrix and degrees of freedom were
7
8 estimated using Satterthwaite's approximation. This model included the fixed effects of
9
10 condition, time (pre, post, 6 month, 12 month) and the interaction between condition
11
12 and time. The presence of a significant interaction between an active intervention and
13
14 the TAU condition over time would indicate a significant reduction in suicidal ideation
15
16 for that condition relative to control. Within-condition change in suicidal ideation was
17
18 also examined using this model. Mixed models yield an intention-to-treat analysis,
19
20 using all available measurement points for each participant under the assumption that
21
22 withdrawal data are missing at random. Two participants with missing suicidal ideation
23
24 scores at baseline were omitted from analyses. To evaluate whether the scoring of the
25
26 suicidal ideation scale influenced the findings, the models were re-estimated using a
27
28 continuous score of suicidal ideation, assessed at each time point as the sum of
29
30 responses to the four ideation items (range 0-12).
31
32
33
34
35
36

37
38 Logistic regression was then used to examine predictors of suicidal ideation at
39
40 post-intervention, defined as a suicidal ideation score of 0. In particular, the hypothesis
41
42 was assessed that reduction in depression symptoms from pre- to post-intervention
43
44 predicted remission of ideation. Only completers of the post-test assessment were
45
46 included in this analysis. A depression symptom change score from pre- to post-
47
48 intervention was calculated by subtracting post-intervention CES-D scores from pre-
49
50 intervention scores, with positive scores indicating a reduction/improvement in
51
52 symptoms. The effect of anxiety symptoms and changes in anxiety were assessed in the
53
54 same way. Suicidal ideation scores (ranging from 0 to 4) were coded categorically as
55
56
57
58
59
60

1
2
3
4 “0” (score ≥ 1 , indicating some suicidal ideation) or “1” (score = 0, no ideation). To
5
6 control for baseline depression, baseline anxiety, baseline suicidality and intervention
7
8 condition, these variables were included in the regression simultaneously with the
9
10 depression change score. In addition, age, gender, education and workforce
11
12 participation were included in the models due to their potential associations with
13
14 suicidal ideation.
15
16
17
18
19
20
21
22
23
24
25
26
27
28
29
30
31
32
33
34
35
36
37
38
39
40
41
42
43
44
45
46
47
48
49
50
51
52
53
54
55
56
57
58
59
60

RESULTS

Descriptives and changes in suicide ideation

Table 1 shows the characteristics of the sample at baseline, with mental health measures for post-intervention also presented. The age range was 19-72, with a median age of 42 years. The majority of participants (57%) had graduated from high school. Most of the participants were female and approximately half were in the work force. Depression and anxiety scores were considerably higher than the cut points for the scales used at both time points, although there were decreases from pre- to post-intervention. Likewise, high rates of suicidality were observed, with 62.7% and 41.5% reporting suicidal ideation at pre- and post-intervention respectively.

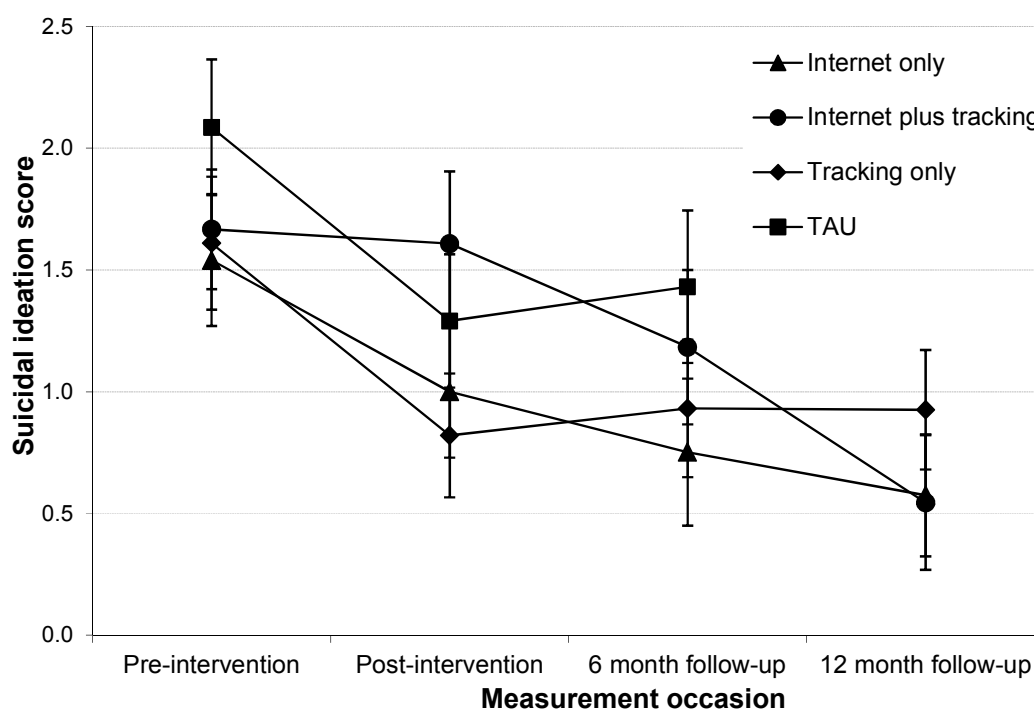
Table 1. Characteristics of participants

	N	Mean	SD
Age	155	41.49	12.35
Years of education	150	13.47	2.67
CES-D depression score, pre-intervention	152	36.25	10.22
CES-D depression score, post-intervention	107	28.68	14.40
DASS anxiety score, pre-intervention	154	13.34	8.03
DASS anxiety score, post-intervention	107	11.45	10.16
GHQ suicidal ideation score - pre-intervention	153	1.73	1.64
GHQ suicidal ideation score - post-intervention	106	1.00	1.45
	N	Count	%
<i>Gender</i>	155		
Female		127	81.9%
Male		28	18.1%
<i>Workforce participation</i>	155		
Participation		72	46.5%
Non-participation		83	53.5%
<i>Treatment condition</i>	155		
Internet only		38	24.5%
Internet plus telephone support		45	29.0%
Telephone support only		37	23.9%
Treatment as usual		35	22.6%

Mixed models: Effect of intervention type on suicidal ideation

Suicide ideation declined significantly over the 12 month period ($F_{3,95.4} = 15.06$, $p < 0.001$). However, differences in change over time between conditions were not significant ($F(8,115.8) = 1.13$, $p = .352$). Figure 1 shows the estimated marginal means for suicidal ideation across measurement occasions.

Figure 1: Estimated marginal means for suicidal ideation across measurement occasions.



Within group contrasts

As can be seen in Table 2, planned contrasts revealed that participants in the call back only and TAU conditions showed significant declines in suicidal ideation from pre- to post-intervention and from pre-intervention to 6 month follow-up. Declines in suicidal ideation from pre-intervention to 12 month follow-up were significant for participants in all conditions in which the difference could be assessed.

Table 2. Within group contrast estimates and significance tests for suicidal ideation

Condition	Statistic	Contrast		
		Pre-intervention to post-intervention	Pre-intervention to 6 month follow-up	Pre-intervention to 12 month follow-up
Internet only	Contrast estimate	-.54	-.79	-.97
	Test value	$t(109.8) = -1.98$	$t(101.5) = -2.50$	$t(73.2) = -3.65$
	<i>p</i> value	.050	.016	<.001
Internet + telephone support	Contrast estimate	-.06	-.48	-1.12
	Test value	$t(121.3) = -.20$	$t(106.2) = -1.45$	$t(80.8) = -3.91$
	<i>p</i> value	.85	.15	<.001
Telephone support only	Contrast estimate	-.79	-.68	-.68
	Test value	$t(105.6) = -3.05$	$t(100.0) = -2.22$	$t(78.0) = -2.61$
	<i>p</i> value	.003	.029	.011
Treatment as usual	Contrast estimate	-.80	-.66	
	Test value	$t(108.0) = -2.89$	$t(103.1) = -1.96$	
	<i>p</i> value	.005	.053	

Between group contrasts

No significant differences were found between conditions at post-intervention, 6 month follow-up, or 12 month follow-up: Internet only vs. TAU (post-test: Contrast estimate = .26; $p = .51$; 6-month follow-up: Contrast estimate = -.14, $p = .77$); Internet only vs. Telephone support only (post-test: Contrast estimate = .25; $p = .51$; 6-month follow-up: Contrast estimate = -.11, $p = .80$; 12-month follow-up: Contrast estimate = -.28; $p = .45$); Internet + telephone support vs. TAU (post-test: Contrast estimate = .74; $p = .07$; 6-month follow-up: Contrast estimate = .17, $p = .72$); Internet + telephone support vs Telephone support only (post-test: Contrast estimate = .73; $p = .07$; 6-month follow-up:

1
2
3
4 Contrast estimate = .19, $p = .67$; 12-month follow-up: Contrast estimate = $-.44$; $p = .26$;
5
6 Telephone support only vs TAU (post-test: Contrast estimate = .01; $p = .99$; 6-month
7
8 follow-up: Contrast estimate = $-.02$, $p = .96$); Internet only vs Internet + telephone
9
10 support (post-test: Contrast estimate = $-.48$; $p = .24$; 6-month follow-up: Contrast
11
12 estimate = $-.31$, $p = .51$; 12-month follow-up: Contrast estimate = $.16$; $p = .69$).

13
14 To test whether the lack of between-group effects were related to scaling effects of the
15
16 suicidal ideation measure, the models were re-estimated using a continuous score for
17
18 suicidal ideation. As with the original analysis, there was significant reduction over time
19
20 in suicidal ideation scores ($F_{3,94.5} = 14.08$, $p < 0.001$). Again, there was no significant
21
22 interaction between condition and time ($F_{8,89.9} = 0.81$, $p = 0.598$), indicating no
23
24 significant difference in change of suicidal ideation scores between the intervention
25
26 groups across the study period.
27
28
29
30
31

32 *Effect sizes for suicidal ideation*

33
34
35
36
37 At post-intervention, effect sizes were 0.10 (95% CI: -0.43 to 0.64) for the
38
39 Internet only condition and 0.04 (95% CI: -0.54 to 0.62) for the Internet plus call back
40
41 condition, compared to the TAU condition. Compared to call back only, effect sizes
42
43 were 0.28 (95% CI: -0.24 to 0.79) for the Internet only condition and 0.41 (95% CI: $-$
44
45 0.15 to 0.98) for the Internet plus call back condition. At 6 month follow-up, effect sizes
46
47 were 0.36 (95% CI: -0.24 to 0.96) for the Internet only condition and 0.20 (95% CI: $-$
48
49 0.42 to 0.81) for the Internet plus telephone support condition, compared to the TAU
50
51 condition. Compared to telephone support only, effect sizes were 0.08 (95% CI: -0.48
52
53 to 0.63) for the Internet only condition and 0.07 (95% CI: -0.51 to 0.65) for the Internet
54
55
56
57
58
59
60

1
2
3
4 plus telephone support condition. At 12 month follow-up, effect sizes were 0.28 (95%
5
6 CI: -0.33 to 0.89) for the Internet only condition and 0.45 (95% CI: -0.24 to 1.13) for
7
8 the Internet plus telephone support condition, compared with the call back only
9
10 condition.

11 12 13 14 15 *Predictors of suicide ideation*

16
17 A logistic regression analysis was designed to measure predictors of suicide
18 ideation change taking account of intervention condition. Consistent with findings
19 reported above, compared to baseline (M:1.73; SD: 1.64; N=153) suicidal ideation
20 significantly decreased in the whole sample at post-test (M:1.00; SD:1.45; N=106), 6-
21 month (M:0.99; SD:1.54; N=91) and 12-month follow-up (M:0.66; SD:1.27; N=56).
22
23 However, as there was no significant interaction effect between condition and time on
24 suicidal ideation, this interaction was not retained in the model. Table 3 shows the
25 results for the model with interactions excluded. As would be expected, higher levels of
26 suicide ideation at baseline were associated with significantly reduced odds of absence
27 of suicide ideation at post-test. Neither baseline depression nor anxiety was significantly
28 associated with no suicide ideation at post-test. There were also no significant effects of
29 any of the demographic characteristics. However, a greater improvement in depression
30 symptoms from pre- to post-intervention was associated with increased odds of no
31 suicidal ideation at post-intervention. At baseline, the majority of participants (n=93;
32 62.0%) reported both depressive symptoms and suicidal ideation. This proportion
33 decreased at all time-points following the interventions [post-test: 44 (41.5%); 6-months
34 follow-up: 30 (33.0%); 12-months follow-up: 13 (23.2%)]. Based on McNemar's tests
35 using completers of each assessment, these decreases were significant at all three time
36
37
38
39
40
41
42
43
44
45
46
47
48
49
50
51
52
53
54
55
56
57
58
59
60

points ($P = 0.005$, $P < 0.001$ and $P = 0.002$ at post, 6-months and 12-months respectively). There was no significant difference in the proportion of participants with depression but no suicidal ideation, except at 12-month follow-up [baseline: $n=53$ (35.3%); post-test: $n=42$ (39.6%), 6-months follow-up: $n=28$ (30.8%); 12-months follow-up: 18 (32.1%); $P = 1.00$; $P = 0.15$ and $P = 0.019$ at post, 6-months and 12-months respectively).

Table 3. Logistic regression analyses of remission of suicidal ideations (completers only)

	OR	p	95% CI	
			Lower	Upper
Suicidality score at baseline	0.409	<0.001	0.249	0.671
<i>Condition</i>	--	0.239		
TAU	1.000	--		
Internet only	1.408	0.699	0.248	8.001
Internet + telephone support	0.323	0.234	0.050	2.082
Telephone support only	2.442	0.284	0.476	12.512
Baseline depression score	0.926	0.081	0.849	1.010
Depression change score	1.165	<0.001	1.070	1.267
Baseline anxiety score	1.066	0.256	0.955	1.190
Anxiety change score	0.986	0.836	0.859	1.130
Gender: F vs M	0.992	0.993	0.174	5.646
Age	1.051	0.054	0.999	1.106
Years of education	0.897	0.438	0.681	1.181
Not in labour force vs. employed	0.915	0.899	0.233	3.592

*only main effects included.

DISCUSSION

This was the first study to examine the effect of online interventions on suicide ideation in a call centre using a randomised controlled trial design. In contrast to our hypothesis, results from our study indicated that irrespective of intervention condition, participants' suicidal ideation declined over time at post test, and six months. Declines in suicidal ideation remained significant at 12 month follow-up. Although there were small effects at post-test and medium effect sizes at follow-up among the intervention conditions, there were no consistent overall effects for condition. Participants having higher baseline suicide scores were more likely to continue experiencing suicidal ideation at post-intervention, while those with greater improvements in depression symptoms were less likely to experience suicide ideation at post-intervention.

Several studies have shown reductions of suicide ideation in uncontrolled pre post trials of counselling or internet CBT (e.g.,[5, 6]). This is, to our knowledge the first randomised controlled trial of an intervention in a call line centre, comparing a number of active interventions to treatment as usual. The study is also unique in that it examined predictors of ideation change, taking account of the effect of intervention. As previously reported for this study [9], web based CBT, and web CBT with counsellor call back significantly reduced depression symptoms relative to TAU. These findings indicate that suicide ideation did not follow the same pattern as depression in response to the intervention, and, more generally, that suicide ideation was not strictly tethered to depression. Nevertheless, the regression analysis found that taking account of intervention type, changes in depression did predict later lower levels of ideation, suggesting that depression change is an important albeit not necessarily the only factor in reducing ideation. We interpret these findings to suggest that change in depression, in

1
2
3
4 what ever way it is brought about, is a contributing variable to reduction in suicide
5
6 ideation. A second explanation for the findings is that changes in suicide ideation and
7
8 changes in depression follow different time trajectories, with ideation resolving faster
9
10 than depression. The two constructs are likely to be interactive, with ideation reduction
11
12 assisting in lowering depression symptoms over time. Hopelessness may mediate both
13
14 depression and ideation but may influence each within different time frames [24].
15
16 Interestingly, a recent meta-analysis [25] has examined the effects of face-to-face
17
18 psychotherapy for adult depression on suicidality. It found a non-significant effect of
19
20 psychotherapy in the reduction of suicidality but a significant effect for depression,
21
22 consistent with concept that depression and suicidality are not strictly tethered.
23
24

25
26 Suicide ideation resolved in our TAU condition, consistent with the notion that
27
28 ideation is responsive to the passage of time. This finding, however, does not rule out
29
30 the possibility that specific psychological or support interventions will support faster
31
32 resolution of suicide ideation symptoms. Indeed the intervention developed by Van
33
34 Spijker et al. [7] may be one of these specific interventions.
35
36

37 38 39 *Limitations of the study*

40
41
42
43
44 One explanation of the failure to find an effect of intervention type on suicide
45
46 ideation outcomes is that these findings are due to regression to the mean. Because all
47
48 scores were initially high at baseline, scores would be expected to revert to the mean on
49
50 the second occasion of measurement. Intervention completion rates were lower in our
51
52 study relative to some other trials of web-based treatments for depression [26] but not of
53
54 other telephone-based services [3]. The reasons for this are unclear. The current trial
55
56
57
58
59
60

1
2
3
4 was a true effectiveness trial employing a volunteer workforce for recruitment and call
5
6 back, and hence might be expected to be associated with greater recruitment and
7
8 adherence problems relative to the more controlled environment of an efficacy study
9
10 [27]. Also, the interventions were short, delivered by non-health professionals, and may
11
12 have constituted the only service received. The measure used to assess suicidality used
13
14 items that categorised outcomes dichotomously, and then summed responses, as per
15
16 scale score recommendations. Moreover, these scores were then further dichotomised in
17
18 the regression analysis. This is essentially a conservative treatment of data. We did
19
20 investigate whether other continuous scoring methods might reveal intervention effects.
21
22 These data did not yield any relationships. Finally, we were not able to analyse the
23
24 influence of other psychological characteristics on treatment outcome, such as
25
26 hopelessness, or support from family, which might affect both depression and suicidal
27
28 ideation levels. These measures were not included in our study.
29
30
31
32

33 34 *Future research*

35
36
37 Replications of this trial need to be performed to check consistency of research
38
39 findings. Furthermore, examination of mediators of change such as hopelessness in
40
41 larger samples would add significantly to our knowledge of which components of
42
43 therapy are necessary for reduction of suicide ideation. Given the absence of differences
44
45 between conditions, it may be that one or more components present in each treatment
46
47 arm (e.g., giving hope, or participating in research) are responsible for change in
48
49 outcome. Identifying these components and altering their presence by intensifying or
50
51 omitting them in a new intervention trial would add to our current knowledge
52
53
54
55
56
57
58
59
60

1
2
3
4 mechanisms of change. Investigation of the causes of reductions in suicide ideation is
5
6 warranted.
7
8

9
10 *Clinical implications*
11

12
13 Despite the limitations, the current study clearly demonstrated that suicide
14
15 ideation declined irrespective of intervention, telephone counsellor contact or wait-list.
16
17 The addition of the TAU control condition is a significant improvement over previous
18
19 trials. The study demonstrated that, while CBT internet interventions are significantly
20
21 more effective in resolving depression symptoms than control conditions, these operate
22
23 no more successfully than current call centre practice in resolving suicide ideation.
24
25 Suicide ideation reduces significantly more effectively in those individuals who also
26
27 have resolving depression. The majority of people experiencing suicidal ideation do not
28
29 receive mental health treatment [28]. Internet-based or telephone based interventions
30
31 have the ability advantage that they can be easily accessed by large numbers of people,
32
33 on an anonymous basis. In line with Watts et al. [6], our findings demonstrate the
34
35 importance of not excluding suicidal participants from interventions designed to target
36
37 depression.
38
39
40
41
42
43

44 **ACKNOWLEDGEMENTS**
45
46
47

48 Nicole Burgess coordinated and conducted data collection for the trial. Dawn O'Neil
49
50 was involved in obtaining funding for the trial and coordinating Lifeline Australia's
51
52 collaboration with the ANU. Assoc Prof Richard O'Kearney was a member of LF's PhD
53
54 supervisory panel. Trevor Carlyon was also involved in coordinating Lifeline staff and
55
56
57
58
59
60

1
2
3
4 volunteer involvement in the trial and supported Nicole in her role. The e hub team
5
6 supported the trial implementation. We acknowledge the contributions of the Lifeline
7
8 counselors who participated in this trial.
9

10 11 12 13 **COMPETING INTERESTS**

14
15
16
17 None.
18
19

20 21 22 **FUNDING**

23
24
25
26 Australian Research Council Linkage Grant (LP0667970), 2006, 3 years, \$279,325
27
28 (Christensen, Griffiths, Mackinnon, Smith), Internet technologies, health informatics,
29
30 and statistical models, and new delivery platforms in call centres (CIA).

31
32
33 HC and PB were supported by NHMRC 525411 and NHMRC Early Career Fellowship
34
35 1035262. KMG is supported by NHMRC Fellowship No. 525413.
36
37

38 39 40 **CONTRIBUTORSHIP**

41
42 HC, KG, AJM conceived the study, LF, HC, KG, AJM designed the study, HC, TD
43
44 drafted the initial manuscript, LF, PB, AJM prepared and cleaned the data and
45
46 conducted initial data analysis. All authors contributed to revised drafts.
47
48

49 50 51 **DATA SHARING**

52
53 The data from this study are available through email to Dr Philip Batterham
54
55 p.batterhan@anu.edu.au
56
57
58
59
60

REFERENCE LIST

1. Goldberg, D. and V. Hillier, *A scaled version of the General Health Questionnaire*. *Psychological Medicine*, 1979. **9**: p. 139-145.
2. Lifeline Australia, *Lifeline Australia Annual Report 2009-2010*, 2010, Lifeline Australia Ltd: Canberra.
3. Rhee, W., et al., *Efficacy of brief telephone psychotherapy with callers to a suicide hotline*. *Suicide and Life Threatening Behaviour*, 2005. **35**(3): p. 317-28.
4. Kalafat, J., et al., *An evaluation of crisis hotline outcomes. Part 1: Nonsuicidal crisis callers*. *Suicide Life Threat Behav*, 2007. **37**(3): p. 322-37.
5. Gould, M.S., et al., *An evaluation of crisis hotline outcomes. Part 2: Suicidal callers*. *Suicide Life Threat Behav*, 2007. **37**(3): p. 338-52.
6. Watts, S., et al., *A clinical audit of changes in suicide ideas with internet treatment for depression*. *BMJ Open*, 2012. **2**(5).
7. van Spijker, B.A., A. van Straten, and A.J. Kerkhof, *The effectiveness of a web-based self-help intervention to reduce suicidal thoughts: a randomized controlled trial*. *Trials*, 2010. **11**: p. 25.
8. Farrer, L., et al., *Internet-based CBT for depression with and without telephone tracking in a national helpline: randomised controlled trial*. *PLoS One*, 2011. **6**(11): p. e28099.
9. Farrer, L., et al., *Web-based cognitive behavior therapy for depression with and without telephone tracking in a national helpline: secondary outcomes from a randomized controlled trial*. *J Med Internet Res*, 2012. **14**(3): p. e68.

10. Nock, M.K., et al., *Cross-national analysis of the associations among mental disorders and suicidal behavior: findings from the WHO World Mental Health Surveys*. PLoS Med, 2009. **6**(8): p. e1000123.
11. Andrews, G. and T. Slade, *Interpreting scores on the Kessler Psychological Distress Scale (K10)*. Aust N Z J Public Health, 2001. **25**(6): p. 494-7.
12. Christensen, H., K.M. Griffiths, and A.F. Jorm, *Delivering interventions for depression by using the internet: randomised controlled trial*. BMJ, 2004. **328**(7434): p. 265.
13. Tennant, C., *The general health questionnaire: a valid index of psychological impairment in Australian populations*. Medical Journal of Australia, 1977. **2**: p. 392-394.
14. Goldney, R., et al., *Suicidal ideation: its enduring nature and associated morbidity*. Acta Psychiatrica Scandinavica, 1991. **83**(2): p. 115-20.
15. Goldney, R., et al., *Suicidal ideation in a random community sample: attributable risk due to depression and psychosocial and traumatic events*. Australian and New Zealand Journal of Psychiatry, 2000. **34**(1): p. 98-106.
16. Goldney, R., et al., *Anger, suicidal ideation, and attempted suicide: a prospective study*. Comprehensive Psychiatry, 1997. **38**(5): p. 264-8.
17. Goldney, R., et al., *Suicidal ideation in a young adult population*. Acta Psychiatrica Scandinavica, 1989. **79**: p. 481-489.
18. Watson, D., et al., *The measurement of suicidal ideation*. Crisis, 2001. **22**(1): p. 12-14.
19. LS, R., *The CES-D scale: A self-report depression scale for research in the general population*. Applied Psychological Measurement, 1977. **1**: p. 16.

- 1
2
3
4 20. Roberts RE, V.S., *The Center for Epidemiologic Studies Depression Scale: It's*
5 *use in a community sample.* American Journal of Psychiatry, 1983. **140**: p. 5.
6
7
8 21. Lovibond, S.a.L.P., *Manual for the Depression Anxiety Stress Scales.* . Vol. 2.
9 1995, Sydney: Psychology Foundation.
10
11
12 22. Antony, M.M.B., P.J.; Cox, B.J., Enns, M.W. & Swinson, R.P., *Psychometric*
13 *properties of the 42-item and 21-item versions of the Depression Anxiety Stress*
14 *Scales (DASS) in clinical groups and a community sample.* Psychological
15 *Assessment*, 1998. **10**: p. 5.
16
17
18 23. Lovibond, S.a.L.P., *The structure of negative emotional states: Comparison of*
19 *the Depression Anxiety Stress Scales (DASS) with the Beck Depression and*
20 *Anxiety Inventories.* Behaviour Research and Therapy, 1995. **33**: p. 8.
21
22
23 24. Thompson, E.A., et al., *The mediating roles of anxiety depression, and*
24 *hopelessness on adolescent suicidal behaviors.* Suicide Life Threat Behav, 2005.
25 **35**(1): p. 14-34.
26
27
28 25. Cuijpers, P., et al., *The effects of psychotherapy for adult depression on*
29 *suicidality and hopelessness: a systematic review and meta-analysis.* J Affect
30 *Disord*, 2013. **144**(3): p. 183-90.
31
32
33 26. Christensen, H., K.M. Griffiths, and L. Farrer, *Adherence in internet*
34 *interventions for anxiety and depression.* J Med Internet Res, 2009. **11**(2): p.
35 e13.
36
37
38 27. Flay, B.R., *Efficacy and effectiveness trials (and other phases of research) in the*
39 *development of health promotion programs.* Prev Med, 1986. **15**(5): p. 451-74.
40
41
42
43
44
45
46
47
48
49
50
51
52
53
54
55
56
57
58
59
60

- 1
2
3
4 28. Michelmore, L. and P. Hindley, *Help-seeking for suicidal thoughts and self-*
5
6 *harm in young people: a systematic review.* Suicide Life Threat Behav, 2012.
7
8
9 **42(5):** p. 507-24.
10
11
12
13
14
15
16
17
18
19
20
21
22
23
24
25
26
27
28
29
30
31
32
33
34
35
36
37
38
39
40
41
42
43
44
45
46
47
48
49
50
51
52
53
54
55
56
57
58
59
60

For peer review only



CONSORT 2010 checklist of information to include when reporting a randomised trial*

Section/Topic	Item No	Checklist item	Reported on page No
Title and abstract			
	1a	Identification as a randomised trial in the title	1
	1b	Structured summary of trial design, methods, results, and conclusions (for specific guidance see CONSORT for abstracts)	2
Introduction			
Background and objectives	2a	Scientific background and explanation of rationale	5
	2b	Specific objectives or hypotheses	7
Methods			
Trial design	3a	Description of trial design (such as parallel, factorial) including allocation ratio	7-9
	3b	Important changes to methods after trial commencement (such as eligibility criteria), with reasons	na
Participants	4a	Eligibility criteria for participants	7
	4b	Settings and locations where the data were collected	7
Interventions	5	The interventions for each group with sufficient details to allow replication, including how and when they were actually administered	9-10
Outcomes	6a	Completely defined pre-specified primary and secondary outcome measures, including how and when they were assessed	10-11
	6b	Any changes to trial outcomes after the trial commenced, with reasons	na
Sample size	7a	How sample size was determined	6 (ref 8-9)
	7b	When applicable, explanation of any interim analyses and stopping guidelines	na
Randomisation:			
Sequence generation	8a	Method used to generate the random allocation sequence	6 (ref 8-9)
	8b	Type of randomisation; details of any restriction (such as blocking and block size)	8
Allocation concealment mechanism	9	Mechanism used to implement the random allocation sequence (such as sequentially numbered containers), describing any steps taken to conceal the sequence until interventions were assigned	8 (and ref 8-9)
Implementation	10	Who generated the random allocation sequence, who enrolled participants, and who assigned participants to interventions	8
Blinding	11a	If done, who was blinded after assignment to interventions (for example, participants, care providers, those	8

		assessing outcomes) and how	
	11b	If relevant, description of the similarity of interventions	-
Statistical methods	12a	Statistical methods used to compare groups for primary and secondary outcomes	11-13
	12b	Methods for additional analyses, such as subgroup analyses and adjusted analyses	11-13
Results			
Participant flow (a diagram is strongly recommended)	13a	For each group, the numbers of participants who were randomly assigned, received intended treatment, and were analysed for the primary outcome	14
	13b	For each group, losses and exclusions after randomisation, together with reasons	Ref 8-9
Recruitment	14a	Dates defining the periods of recruitment and follow-up	Ref 8-9
	14b	Why the trial ended or was stopped	Ref 8-9
Baseline data	15	A table showing baseline demographic and clinical characteristics for each group	14
Numbers analysed	16	For each group, number of participants (denominator) included in each analysis and whether the analysis was by original assigned groups	14
Outcomes and estimation	17a	For each primary and secondary outcome, results for each group, and the estimated effect size and its precision (such as 95% confidence interval)	14-17
	17b	For binary outcomes, presentation of both absolute and relative effect sizes is recommended	
Ancillary analyses	18	Results of any other analyses performed, including subgroup analyses and adjusted analyses, distinguishing pre-specified from exploratory	17-19
Harms	19	All important harms or unintended effects in each group (for specific guidance see CONSORT for harms)	-
Discussion			
Limitations	20	Trial limitations, addressing sources of potential bias, imprecision, and, if relevant, multiplicity of analyses	21-22
Generalisability	21	Generalisability (external validity, applicability) of the trial findings	20-22
Interpretation	22	Interpretation consistent with results, balancing benefits and harms, and considering other relevant evidence	20-22
Other information			
Registration	23	Registration number and name of trial registry	1
Protocol	24	Where the full trial protocol can be accessed, if available	-
Funding	25	Sources of funding and other support (such as supply of drugs), role of funders	24

*We strongly recommend reading this statement in conjunction with the CONSORT 2010 Explanation and Elaboration for important clarifications on all the items. If relevant, we also recommend reading CONSORT extensions for cluster randomised trials, non-inferiority and equivalence trials, non-pharmacological treatments, herbal interventions, and pragmatic trials. Additional extensions are forthcoming: for those and for up to date references relevant to this checklist, see www.consort-statement.org.



The effect of a web based depression intervention on suicide ideation. Secondary outcome from a randomised controlled trial in a helpline.

Journal:	<i>BMJ Open</i>
Manuscript ID:	bmjopen-2013-002886.R1
Article Type:	Research
Date Submitted by the Author:	26-Apr-2013
Complete List of Authors:	Christensen, Helen; Black Dog Institute, University of New South Wales, School of Medicine Farrer, Lou; Australian National University, Centre for Mental Health Research Batterham, Philip; Australian National University, Centre for Mental Health Research Mackinnon, Andrew; University of Melbourne, Orygen Youth Health Griffiths, Kathleen; Australian National University, Centre for Mental Health Research Donker, Tara; Black Dog Institute, University of New South Wales, School of Medicine
Primary Subject Heading:	Public health
Secondary Subject Heading:	Mental health
Keywords:	Suicide & self-harm < PSYCHIATRY, Depression & mood disorders < PSYCHIATRY, Internet, Telephone

SCHOLARONE™
Manuscripts

The effect of a web based depression intervention on suicide ideation. Secondary outcome from a randomised controlled trial in a helpline.

Helen Christensen¹, Louise Farrer², Philip J Batterham², Andrew Mackinnon³,
Kathleen M Griffiths² and Tara Donker¹

¹*The Black Dog Institute, University of New South Wales, Sydney, NSW, Australia;*

²*Centre for Mental Health Research, Australian National University, Canberra, ACT,*

Australia; ³*Orygen Youth Health, University of Melbourne, Melbourne, VIC, Australia*

Corresponding author:

Helen Christensen

The Black Dog Institute, University of New South Wales, Hospital Road, Prince of
Wales Hospital, Randwick 2031, Sydney, NSW, Australia

E: h.christensen@unsw.edu.au

P: +612 9382 9288

F: +61 2 9382 8208

Key words: Suicide, Depression, Telephone, Internet

Word count: 4,076

ABSTRACT

Objectives: The effect of web-based interventions for depression on suicide ideation in callers to helplines is not known. The aim of this study was to determine if web-based Cognitive Behaviour Therapy (CBT) with and without telephone support is effective in reducing suicide ideation in callers to a helpline compared to treatment as usual. A secondary aim was to examine the factors that predict change in suicide ideation. Putative predictors included level of baseline depression, suicide behaviour, baseline anxiety and type of intervention.

Design: Randomised Controlled Trial

Setting: Lifeline, Australia's 24-hour telephone counselling service Participants: 155 callers to a national helpline service with moderate to high psychological distress.

Interventions: participants were recruited and randomised to receive either 6 weeks of Internet CBT plus weekly telephone follow-up; Internet CBT only; weekly telephone follow-up only; or a wait-list treatment as usual (TAU) control group.

Primary and secondary outcome measures: Suicidal ideation was measured using four items from the 28-item General Health Questionnaire (GHQ-28; [1]). Predictors of change in ideation were tested using logistic regression analysis.

Results: Regardless of intervention condition, participants showed significant reductions in suicidal ideation over twelve months ($p < 0.001$). Higher baseline suicidal behaviour decreased the odds of remission of suicidal ideation at post-intervention (OR: 0.409 ($p < 0.001$)). However, change in depression over the course of the interventions was associated with improvement in suicide ideation (OR: 1.165, $p < 0.001$).

Conclusions: Suicide ideation declines with and without proactive intervention.
Improvements in depression are associated with the resolution of suicide ideation.
Specific interventions focussing on suicide ideation should be further investigated.

TRIAL REGISTRATION: Controlled-Trials.com ISRCTN93903959.

ARTICLE SUMMARY

Article focus:

- To evaluate the effectiveness of a web-based Cognitive Behaviour Therapy intervention on suicide ideation in a helpline.
- To examine predictors of suicide ideation resolution

Key messages:

- Irrespective of intervention condition, participants' suicidal ideation declined over time at post-test, and six months. Declines in suicidal ideation remained significant at 12 month follow-up
- Suicide ideation reduces significantly more in those individuals who also had resolving depression.
- While CBT internet interventions are significantly more effective in resolving depression symptoms compared to control conditions, these operate no more successfully than current call centre practice in resolving suicide ideation.
- Our findings demonstrate the importance of not excluding suicidal participants from interventions designed to target depression.

Strengths and limitations of this study:

- The study used a Randomised Controlled Trial.

- The addition of the TAU control condition is a significant improvement over previous trials.
- Because all scores were initially high at baseline, the lower scores on the second occasion of measurement may have been due to reversion to the mean.

For peer review only

1
2
3
4
5
6
7
8
9
10
11
12
13
14
15
16
17
18
19
20
21
22
23
24
25
26
27
28
29
30
31
32
33
34
35
36
37
38
39
40
41
42
43
44
45
46
47
48
49
50
51
52
53
54
55
56
57
58
59
60

INTRODUCTION

Suicide prevention interventions are delivered every day through helplines and through chat in call centres. In Australia, Lifeline reports that over 50 high risk telephone calls are answered daily [2]. However, despite the load taken by helplines in responding to callers at risk, there has been little investigation of the role of these services in reducing suicide risk, or in reducing risk factors associated with suicide risk, such as depression.

To date, the research evidence from suicide helplines has largely focussed on evaluating interventions using the telephone, and to our knowledge, only one randomised controlled trial (RCT) has been conducted. This study [3] evaluated the effects of two brief telephone psychotherapies in reducing general distress [Solution Focussed Brief Therapy (SFBT) and Common Factors Therapy (CFT)] compared to a waitlist control condition using 85 individuals recruited via a suicide hotline. Outcome measures included the Brief Psychiatric Rating Scale, and the Beck Depression Inventory. Drop out was high in the SFBT condition (50%) compared to the CFT condition (37%) and across both conditions drop out occurred before the first session. Relative to the waitlist control, significant reductions in several measures of depression and anxiety symptoms were found in participants who completed the interventions, with effect sizes estimated in the range of .67 and .93. However, outcomes on suicide specific measures were not reported. A highly cited, although uncontrolled study, used a follow-up design (pre-post outcomes) to evaluate the effectiveness of a helpline for non-suicidal crisis callers (n=1617, of whom 801 provided follow-up data) [4]. Callers' levels of crisis and hopelessness were rated during the calls and found to decrease

1
2
3
4 during the course of the call. In a second study, focussing on 1,085 participants who
5
6 were suicidal Gould et al. [5] found that levels of intent to die over the course of a call
7
8 decreased and that there were continuing falls in hopelessness and psychological pain
9
10 over the continuing weeks.

11
12
13 Web-based interventions are now more frequently used in helpline services, and
14
15 research of their usefulness is emerging in community settings. Two studies of online e-
16
17 health applications targeting either risk factors for suicide (depression) or suicide
18
19 ideation were published in 2012. The first was an uncontrolled service evaluation which
20
21 found a 30% reduction in suicide ideas [6] over the course of a depression web
22
23 program. The second was a randomised controlled trial of an online intervention which
24
25 examined the effectiveness and cost effectiveness of an automated six module, six
26
27 week, intervention specifically targeting suicide ideation for individuals with mild to
28
29 moderate suicidal thoughts. The intervention was based on Cognitive Behaviour
30
31 Therapy (CBT), with Dialectical Behaviour Therapy, Problem Solving Therapy and
32
33 Mindfulness-Based Cognitive Therapy included. Significant reductions in suicidal
34
35 thoughts were found relative to Control condition. The mean incremental cost-
36
37 effectiveness ratio (ICER) was estimated to be €34,727 (US \$41,325) for an additional
38
39 treatment response, indicating annual cost savings per treatment responder [7].
40
41
42
43
44
45

46
47 In 2012, we published the results of a randomised controlled trial investigating
48
49 the effects of a web application in reducing depression and anxiety in a large helpline
50
51 [8, 9]. This trial compared four conditions: a treatment as usual condition (TAU), where
52
53 the participant could call the crisis line at any time; a telephone call back service where
54
55 the participant was contacted for 10 minutes systematically once a week for six weeks; a
56
57
58
59
60

1
2
3
4 CBT internet program for depression combined with a evidence-based depression
5
6 information website, and a combined condition which incorporated telephone call back
7
8 and the web programs. Both the web programs alone, and the web programs in
9
10 combination with the telephone call back, were effective at 12 months in reducing
11
12 depression symptoms, relative to TAU. This study also measured suicide ideation, and
13
14 in this paper, we report the results using this outcome measure.
15
16

17
18 Suicide ideation is a substantial risk factor for suicide attempt. Theories of
19
20 suicide causation point to the importance of depression and hopelessness in leading to
21
22 increased levels of suicide ideation and attempts (see [10]). We hypothesised that
23
24 suicide ideation would be reduced over time in those conditions which successfully
25
26 reduced depression. Accordingly, we first examined the effect of the four interventions
27
28 conditions on suicide ideation. For suicide ideation, we hypothesised that the web CBT
29
30 intervention focussing on reducing depression—with or without the telephone call
31
32 back— would result in significantly greater reduction of suicide ideation than the other
33
34 two conditions, which did not include interventions specifically aiming to reduce
35
36 depression. We then used logistic regression to explore which factors, in addition to
37
38 any effect of the intervention, predicted changes in suicide ideation at post-test. These
39
40 factors were baseline suicidality, baseline depression, baseline anxiety, age, gender,
41
42 education, workforce participation, and changes in depression and anxiety over the
43
44 course of the intervention (pre to post-test).
45
46
47
48
49
50
51

52 **METHOD**

53
54 Data for this study were collected as part of a randomized controlled trial of the
55
56 impact of a Web-based CBT and psychoeducation intervention on depression symptoms
57
58
59
60

1
2
3
4 [9]. The trial comprised four arms: (i) a Web-based CBT intervention; (ii) a Web-based
5
6 CBT intervention delivered in conjunction with a telephone call back; (iii) the proactive
7
8 call back telephone line alone, and (iv) TAU, which consisted of the opportunity for the
9
10 participant to contact the helpline if needed.

11 12 13 **Ethics statement**

14
15 Ethics approval for the trial was granted by the Australian National University
16
17 Human Research Ethics Committee (Protocol no. 2007/12).

18 19 20 21 22 23 **Participants**

24
25 Participants were 155 callers to Lifeline, Australia's 24-hour telephone
26
27 counselling service, recruited between July 2007 and January 2009. High distress or
28
29 acutely suicidal participants were excluded. A total of 910 callers agreed to be screened
30
31 by telephone. Of these, 142 (15.6%) were subsequently unable to be contacted, 61 (7%)
32
33 were later unwilling to participate, and 337 (37%) did not meet eligibility criteria.
34
35 Respondents were not eligible for inclusion in the trial if they (1) scored less than 22 on
36
37 the Kessler Psychological Distress Scale [11] (138/337, 41%), a brief screening scale
38
39 used clinically and epidemiologically, (2) had, by self-report, a diagnosis of
40
41 schizophrenia or bipolar disorder (89, 26%), or (3) did not have Internet access (67,
42
43 20.0%). Ineligible participants were offered brochures sent by mail containing
44
45 information about the Web intervention used in the trial. Of the 370 people eligible for
46
47 inclusion in the trial, 155 completed informed consent procedures and pre-intervention
48
49 assessments, and were randomly assigned to the trial conditions. The trial flow is
50
51 illustrated in Figure 1.
52
53
54
55
56
57
58
59
60

Procedure

Following screening and informed consent procedures, pre-intervention data were obtained through a self-report questionnaire mailed to participants. A block randomization procedure was used, with stratification based on site of recruitment and severity of psychological distress at screening. Allocation of participants to trial conditions was conducted independently by a research assistant not involved in the day-to-day running of the trial. Following randomization, all participants were contacted by telephone and were mailed the relevant materials for their allocated condition.

Intervention and Trial Conditions

The Web-only intervention consisted of Web-based psychoeducation (in week 1 provided by BluePages: bluepages.anu.edu.au) combined with Web-based CBT (in weeks 2–6 provided by MoodGYM: moodgym.anu.edu.au). BluePages is an educational site that provides information on evidence-based interventions for depression. MoodGYM is a first generation, interactive web application which delivers cognitive behaviour therapy through a series of 5 modules, captures user behaviour and self-report symptoms on validated scales, and offers an online CBT workbook. Both of these Web programs have been shown to reduce depression symptoms in community users [12]. A printed manual containing week-by-week instructions for accessing the Web programs (via a login) was mailed to participants at the start of the trial.

In the Web with telephone call back condition, participants completed the Web intervention and also received a weekly 10-minute telephone call from a Lifeline

1
2
3
4 telephone counsellor. The purpose of these calls was to address any issues associated
5
6 with the participants' use of the intervention.
7
8

9
10 In the telephone call back only condition, participants received a weekly 10-minute
11
12 telephone call initiated from a telephone counsellor. These scripted calls focused on
13
14 various environmental and lifestyle factors associated with depression.
15

16
17 In the TAU condition, participants received neither the call back nor Web interventions,
18
19 but were free to use the helpline service as needed. Participants in this condition were
20
21 wait-listed to receive the Web-only intervention following completion of the 6-month
22
23 follow-up.
24
25

26
27 As in the TAU condition, participants in all 3 other conditions were also able to use the
28
29 helpline service as needed, which provided usual emergency or support services. Self-
30
31 reported contacts with the service were taken at each follow-up occasion for each of the
32
33 4 conditions. Any use of this service during the intervention period was additional to the
34
35 10-minute telephone calls offered proactively as part of the call back component of the
36
37 Telephone call back condition and the Internet plus call back condition.
38
39
40

41 **Measures**

42 *Suicidal ideation*

43
44
45 Suicidal ideation was measured using four items from the 28-item General
46
47 Health Questionnaire (GHQ-28; [1]). The four questions measure suicidal ideation,
48
49 asking respondents to indicate how they have felt over the last few weeks. The first two
50
51 items: 'Have you recently felt that life is not worth living' and 'Have you recently found
52
53 yourself wishing you were dead and away from it all' were scored on the 4-point scale:
54
55
56
57
58
59
60

1
2
3
4 'Not at all', 'No more than usual', 'Rather more than usual' or 'Much more than usual'.
5
6 The remaining two items: 'Have you recently had thoughts of the possibility that you
7
8 might do away with yourself' and 'Have you recently found that the idea of taking your
9
10 own life kept coming into your mind' were scored on the 4-point scale: 'Definitely not',
11
12 'I don't think so', 'Has crossed my mind' or 'Definitely has'. Responses were then
13
14 categorised in a binary manner, with the negatively-worded response categories (Not at
15
16 all, No more than usual, definitely not, and I don't think so) scored with a 0, and the
17
18 positively-worded response categories scored with a 1. Binary scores for each item were
19
20 summed to provide a total scale score ranging from 0 to 4, with a higher score
21
22 indicating higher suicidal ideation. This scoring system is that used for all items and sub
23
24 scores of the GHQ-28, which has been validated in Australian populations [13]. The
25
26 four suicide items from the GHQ-28 have been used extensively by Goldney and
27
28 colleagues to assess suicidal ideation in a number of Australian samples [14-16]. These
29
30 items have been validated relative to other well established measures of suicidal intent
31
32 and hopelessness [17, 18]. Cronbach Alpha for the 4 items at baseline in the present
33
34 sample was 0.90.
35
36
37
38
39
40
41

42 *Predictor variables*

43
44 Depression symptoms were measured by the Center for Epidemiologic Studies
45
46 Depression Scale (CES-D)[19], a widely used, 20 item scale with strong reliability and
47
48 validity [19, 20], with scores ranging from 0 to 60. Anxiety symptoms were assessed
49
50 using the 14-item anxiety scale from the Depression, Anxiety and Stress Scales (DASS-
51
52 A;[21]. Each of these items is rated on a four-point scale from 0 ("did not apply to me at
53
54 all") to 4 ("applied to me most of the time"), with total scores ranging from 0 to 42. The
55
56
57
58
59
60

1
2
3
4 reliability and validity of the DASS-A scale has been demonstrated previously ([22,
5
6 23]).
7

8
9 Demographic variables including age, gender, educational attainment and
10 workforce participation were assessed by self-report in the pre-test survey. Educational
11 attainment was based on two items assessing highest level of education, which were
12 used to form an estimate of total number of years of education. Workforce participation
13 was based on an item assessing employment status, with “unemployed” and “not in the
14 labour force” categorised as non-participation, and employed “full-time” or “part-time”
15 categorised as participation.
16
17
18
19
20
21
22
23
24
25

26 **Statistical analyses**

27
28 Differential changes in suicide ideation across the four conditions were assessed
29 using mixed model repeated measures analysis of variance. Within-person variation was
30 modeled using an unstructured covariance matrix and degrees of freedom were
31 estimated using Satterthwaite’s approximation. This model included the fixed effects of
32 condition, time (pre, post, 6 month, 12 month) and the interaction between condition
33 and time. The presence of a significant interaction between an active intervention and
34 the TAU condition over time would indicate a significant reduction in suicidal ideation
35 for that condition relative to control. Within-condition change in suicidal ideation was
36 also examined using this model. Mixed models yield an intention-to-treat analysis,
37 using all available measurement points for each participant under the assumption that
38 withdrawal data are missing at random. Two participants with missing suicidal ideation
39 scores at baseline were omitted from analyses. To evaluate whether the scoring of the
40 suicidal ideation scale influenced the findings, the models were re-estimated using a
41
42
43
44
45
46
47
48
49
50
51
52
53
54
55
56
57
58
59
60

1
2
3
4 continuous score of suicidal ideation, assessed at each time point as the sum of
5
6 responses to the four ideation items (range 0-12).
7

8
9 Logistic regression was then used to examine predictors of suicidal ideation at
10 post-intervention, defined as a suicidal ideation score of 0. In particular, the hypothesis
11 was assessed that reduction in depression symptoms from pre- to post-intervention
12 predicted remission of ideation. Only completers of the post-test assessment were
13 included in this analysis. A depression symptom change score from pre- to post-
14 intervention was calculated by subtracting post-intervention CES-D scores from pre-
15 intervention scores, with positive scores indicating a reduction/improvement in
16 symptoms. The effect of anxiety symptoms and changes in anxiety were assessed in the
17 same way. Suicidal ideation scores (ranging from 0 to 4) were coded categorically as
18 “0” (score ≥ 1 , indicating some suicidal ideation) or “1” (score = 0, no ideation). To
19 control for baseline depression, baseline anxiety, baseline suicidality and intervention
20 condition, these variables were included in the regression simultaneously with the
21 depression change score. In addition, age, gender, education and workforce
22 participation were included in the models due to their potential associations with
23 suicidal ideation.
24
25
26
27
28
29
30
31
32
33
34
35
36
37
38
39
40
41
42
43
44
45
46
47
48
49
50
51
52
53
54
55
56
57
58
59
60

RESULTS

Descriptives and changes in suicide ideation

Table 1 shows the characteristics of the sample at baseline, with mental health measures for post-intervention also presented. The age range was 19-72, with a median age of 42 years. The majority of participants (57%) had graduated from high school. Most of the participants were female and approximately half were in the work force. Depression and anxiety scores were considerably higher than the cut points for the scales used at both time points, although there were decreases from pre- to post-intervention. Likewise, high rates of suicidality were observed, with 62.7% and 41.5% reporting suicidal ideation at pre- and post-intervention respectively.

Table 1. Characteristics of participants

	N	Mean	SD
Age	155	41.49	12.35
Years of education	150	13.47	2.67
CES-D depression score, pre-intervention	152	36.25	10.22
CES-D depression score, post-intervention	107	28.68	14.40
DASS anxiety score, pre-intervention	154	13.34	8.03
DASS anxiety score, post-intervention	107	11.45	10.16
GHQ suicidal ideation score - pre-intervention	153	1.73	1.64
GHQ suicidal ideation score - post-intervention	106	1.00	1.45
	N	Count	%
<i>Gender</i>	155		
Female		127	81.9%
Male		28	18.1%
<i>Workforce participation</i>	155		
Participation		72	46.5%
Non-participation		83	53.5%
<i>Treatment condition</i>	155		
Internet only		38	24.5%
Internet plus call back		45	29.0%
Telephone call back only		37	23.9%

Treatment as usual 35 22.6%

Mixed models: Effect of intervention type on suicidal ideation

Suicide ideation declined significantly over the 12 month period ($F(3, 95.4) = 15.06, p < 0.001$). However, differences in change over time between conditions were not significant ($F(8, 115.8) = 1.13, p = .352$). Figure 2 shows the estimated marginal means for suicidal ideation across measurement occasions.

Within group contrasts

As can be seen in Table 2, planned contrasts revealed that participants in the call back only and TAU conditions showed significant declines in suicidal ideation from pre- to post-intervention and from pre-intervention to 6 month follow-up. Declines in suicidal ideation from pre-intervention to 12 month follow-up were significant for participants in all conditions in which the difference could be assessed.

Table 2. Within group contrast estimates and significance tests for suicidal ideation

Condition	Statistic	Contrast		
		Pre-intervention to post-intervention	Pre-intervention to 6 month follow-up	Pre-intervention to 12 month follow-up
Internet only	Contrast estimate	-.54	-.79	-.97
	Test value	$t(109.8) = -1.98$	$t(101.5) = -2.50$	$t(73.2) = -3.65$
	<i>p</i> value	.050	.016	<.001
Internet + telephone call back	Contrast estimate	-.06	-.48	-1.12
	Test value	$t(121.3) = -.20$	$t(106.2) = -1.45$	$t(80.8) = -3.91$
	<i>p</i> value	.85	.15	<.001
Telephone callback only	Contrast estimate	-.79	-.68	-.68
	Test value	$t(105.6) = -3.05$	$t(100.0) = -2.22$	$t(78.0) = -2.61$

	<i>p</i> value	.003	.029	.011
Treatment as usual	Contrast estimate	-.80	-.66	
	Test value	$t(108.0) = -2.89$	$t(103.1) = -1.96$	
	<i>p</i> value	.005	.053	

Between group contrasts

No significant differences were found between conditions at post-intervention, 6 month follow-up, or 12 month follow-up: Internet only vs. TAU (post-test: Contrast estimate = .26; $p = .51$; 6-month follow-up: Contrast estimate = -.14, $p = .77$); Internet only vs. Telephone call back only (post-test: Contrast estimate = .25; $p = .51$; 6-month follow-up: Contrast estimate = -.11, $p = .80$; 12-month follow-up: Contrast estimate = -.28; $p = .45$); Internet + telephone call back vs. TAU (post-test: Contrast estimate = .74; $p = .07$; 6-month follow-up: Contrast estimate = .17, $p = .72$); Internet + telephone call back vs Telephone call back only (post-test: Contrast estimate = .73; $p = .07$; 6-month follow-up: Contrast estimate = .19, $p = .67$; 12-month follow-up: Contrast estimate = -.44; $p = .26$); Telephone call back only vs TAU (post-test: Contrast estimate = .01; $p = .99$; 6-month follow-up: Contrast estimate = -.02, $p = .96$); Internet only vs Internet + telephone call back (post-test: Contrast estimate = -.48; $p = .24$; 6-month follow-up: Contrast estimate = -.31, $p = .51$; 12-month follow-up: Contrast estimate = .16; $p = .69$). To test whether the lack of between-group effects were related to scaling effects of the suicidal ideation measure, the models were re-estimated using a continuous score for suicidal ideation. As with the original analysis, there was significant reduction over time in suicidal ideation scores ($F(3, 94.5) = 14.08, p < 0.001$). Again, there was no significant interaction between condition and time ($F(8, 89.9) = 0.81, p = 0.598$),

1
2
3
4 indicating no significant difference in change of suicidal ideation scores between the
5
6 intervention groups across the study period.
7
8

9 10 11 *Effect sizes for suicidal ideation* 12

13
14
15 At post-intervention, effect sizes were 0.10 (95% CI: -0.43 to 0.64) for the
16 Internet only condition and 0.04 (95% CI: -0.54 to 0.62) for the Internet plus call back
17 condition, compared to the TAU condition. Compared to call back only, effect sizes
18 were 0.28 (95% CI: -0.24 to 0.79) for the Internet only condition and 0.41 (95% CI: -
19 0.15 to 0.98) for the Internet plus call back condition. At 6 month follow-up, effect sizes
20 were 0.36 (95% CI: -0.24 to 0.96) for the Internet only condition and 0.20 (95% CI: -
21 0.42 to 0.81) for the Internet plus call back condition, compared to the TAU condition.
22 Compared to telephone call back only, effect sizes were 0.08 (95% CI: -0.48 to 0.63) for
23 the Internet only condition and 0.07 (95% CI: -0.51 to 0.65) for the Internet plus
24 telephone call back condition. At 12 month follow-up, effect sizes were 0.28 (95% CI: -
25 0.33 to 0.89) for the Internet only condition and 0.45 (95% CI: -0.24 to 1.13) for the
26 Internet plus call back condition, compared with the call back only condition.
27
28
29
30
31
32
33
34
35
36
37
38
39
40
41
42
43

44 *Predictors of suicide ideation* 45

46 A logistic regression analysis was designed to measure predictors of suicide
47 ideation change taking account of intervention condition. Consistent with findings
48 reported above, compared to baseline (M:1.73; SD: 1.64; N=153) suicidal ideation
49 significantly decreased in the whole sample at post-test (M:1.00; SD:1.45; N=106), 6-
50 month (M:0.99; SD:1.54; N=91) and 12-month follow-up (M:0.66; SD:1.27; N=56).
51
52
53
54
55
56
57
58
59
60

1
2
3
4 However, as there was no significant interaction effect between condition and time on
5
6 suicidal ideation, this interaction was not retained in the model. Table 3 shows the
7
8 results for the model with interactions excluded. As would be expected, higher levels of
9
10 suicide ideation at baseline were associated with significantly reduced odds of absence
11
12 of suicide ideation at post-test. Neither baseline depression nor anxiety was significantly
13
14 associated with no suicide ideation at post-test. There were also no significant effects of
15
16 any of the demographic characteristics. However, a greater improvement in depression
17
18 symptoms from pre- to post-intervention was associated with increased odds of no
19
20 suicidal ideation at post-intervention. At baseline, the majority of participants (n=93;
21
22 62.0%) reported both depressive symptoms and suicidal ideation. This proportion
23
24 decreased at all time-points following the interventions [post-test: 44 (41.5%); 6-months
25
26 follow-up: 30 (33.0%); 12-months follow-up: 13 (23.2%)]. Based on McNemar's tests
27
28 using completers of each assessment, these decreases were significant at all three time
29
30 points ($P = 0.005$, $P < 0.001$ and $P = 0.002$ at post, 6-months and 12-months
31
32 respectively). There was no significant difference in the proportion of participants with
33
34 depression but no suicidal ideation, except at 12-month follow-up [baseline: n=53
35
36 (35.3%); post-test: n=42 (39.6%), 6-months follow-up: n=28 (30.8%); 12-months
37
38 follow-up: 18 (32.1%); $P = 1.00$; $P = 0.15$ and $P = 0.019$ at post, 6-months and 12-
39
40 months respectively).
41
42
43
44
45
46
47
48

49 **Table 3.** Logistic regression analyses of remission of suicidal ideations (completers
50 only)
51

	OR	p	95% CI	
			Lower	Upper
52				
53				
54				
55				
56				
57				
58				
59				
60				

Suicidality score at baseline	0.409	<0.001	0.249	0.671
<i>Condition</i>	--	0.239		
TAU	1.000	--		
Internet only	1.408	0.699	0.248	8.001
Internet + telephone call back	0.323	0.234	0.050	2.082
Telephone call back only	2.442	0.284	0.476	12.512
Baseline depression score	0.926	0.081	0.849	1.010
Depression change score	1.165	<0.001	1.070	1.267
Baseline anxiety score	1.066	0.256	0.955	1.190
Anxiety change score	0.986	0.836	0.859	1.130
Gender: F vs M	0.992	0.993	0.174	5.646
Age	1.051	0.054	0.999	1.106
Years of education	0.897	0.438	0.681	1.181
Not in labour force vs. employed	0.915	0.899	0.233	3.592

*only main effects included.

DISCUSSION

This was the first study to examine the effect of online interventions on suicide ideation in a helpline using a randomised controlled trial design. In contrast to our hypothesis, results from our study indicated that irrespective of intervention condition, participants' suicidal ideation declined over time at post-test, and six months. Declines were slower to become significant for those randomised to the Internet plus call back condition. For all groups, declines in suicidal ideation remained significant at 12 month follow-up. Although there were small effects at post-test and medium effect sizes at follow-up among the intervention conditions, there were no consistent overall effects

1
2
3
4 for condition. Participants having higher baseline suicide scores were more likely to
5
6 continue experiencing suicidal ideation at post-intervention, while those with greater
7
8 improvements in depression symptoms were less likely to experience suicide ideation at
9
10 post-intervention.
11

12
13 Several studies have shown reductions of suicide ideation in uncontrolled pre
14
15 post trials of counselling or internet CBT (e.g.,[5, 6]). This is, to our knowledge the
16
17 first randomised controlled trial of an intervention in a helpline, comparing a number of
18
19 active interventions to treatment as usual. The study is also unique in that it examined
20
21 predictors of ideation change, taking account of the effect of intervention. As previously
22
23 reported for this study [9], web based CBT, and web CBT with counsellor call back
24
25 significantly reduced depression symptoms relative to TAU. These findings indicate
26
27 that suicide ideation did not follow the same pattern as depression in response to the
28
29 intervention, and, more generally, that suicide ideation was not strictly tethered to
30
31 depression. Nevertheless, the regression analysis found that taking account of
32
33 intervention type, changes in depression did predict later lower levels of ideation,
34
35 suggesting that depression change is an important albeit not necessarily the only factor
36
37 in reducing ideation. We interpret these findings to suggest that change in depression, in
38
39 whatever way it is brought about, is a contributing variable to reduction in suicide
40
41 ideation. A second explanation for the findings is that changes in suicide ideation and
42
43 changes in depression follow different time trajectories, with ideation resolving faster
44
45 than depression. The two constructs are likely to be interactive, with ideation reduction
46
47 assisting in lowering depression symptoms over time. Hopelessness may mediate both
48
49 depression and ideation but may influence each within different time frames [24].
50
51 Interestingly, a recent meta-analysis [25] has examined the effects of face-to-face
52
53
54
55
56
57
58
59
60

1
2
3
4 psychotherapy for adult depression on suicidality. It found a non-significant effect of
5
6 psychotherapy in the reduction of suicidality but a significant effect for depression,
7
8 consistent with concept that depression and suicidality are not strictly tethered.
9

10 Suicide ideation resolved in our TAU condition, consistent with the notion that ideation
11
12 is responsive to events or processes that occurred with the passage of time for
13
14 participants with access to “usual services”. We do know that at 6 weeks TAU
15
16 participants were more likely to make more calls to the helpline service compared to
17
18 participants in the Internet alone condition, but not to the other conditions. Eighty one
19
20 percent of TAU participants reported that they made at least one call, and approximately
21
22 55% had made 3 or more calls. These calls may have contributed to the suicide
23
24 resolution in this and the other two conditions. However, these spontaneous calls were
25
26 unlikely to be responsible for the differences in depression resolution, given that the
27
28 Internet alone group also showed drops in depression levels.
29
30
31

32
33 The finding that all groups showed suicide resolution, however, does not rule
34
35 out the possibility that specific psychological or proactive interventions will support
36
37 faster resolution of suicide ideation symptoms than the interventions reported here.
38
39 Indeed the intervention developed by Van Spijker et al. [7] may be one of these specific
40
41 interventions.
42
43
44
45

46 *Limitations of the study*

47
48
49
50

51 One explanation of the failure to find an effect of intervention type on suicide
52
53 ideation outcomes is that these findings are due to regression to the mean. Because all
54
55 scores were initially high at baseline, scores would be expected to revert to the mean on
56
57
58
59
60

1
2
3
4 the second occasion of measurement. Intervention completion rates were lower in our
5
6 study relative to some other trials of web-based treatments for depression [26] but not of
7
8 other telephone-based services [3]. The reasons for this are unclear. The current trial
9
10 was a true effectiveness trial employing a volunteer workforce for recruitment and call
11
12 back, and hence might be expected to be associated with greater recruitment and
13
14 adherence problems relative to the more controlled environment of an efficacy study
15
16 [27]. Also, the interventions were short, delivered by non-health professionals, and may
17
18 have constituted the only service received. The measure used to assess suicidality used
19
20 items that categorised outcomes dichotomously, and then summed responses, as per
21
22 scale score recommendations. Moreover, these scores were then further dichotomised in
23
24 the regression analysis. This is essentially a conservative treatment of data. We did
25
26 investigate whether other continuous scoring methods might reveal intervention effects.
27
28 These data did not yield any relationships. The generalisability of the findings to
29
30 severely suicidal individuals is also limited, given acutely suicidal or highly distressed
31
32 callers were specifically not invited to participate. We had relatively low success in
33
34 recruiting participants to the trial, a finding that reflects the nature of effectiveness trials
35
36 using targeted samples such as ours [27] and where a mismatch occurs between the
37
38 expectation of phoning a crisis centre and being 'diverted' to another program. Finally,
39
40 we were not able to analyse the influence of other psychological characteristics on
41
42 treatment outcome, such as hopelessness, or support from family, which might affect
43
44 both depression and suicidal ideation levels. These measures were not included in our
45
46 study.
47
48
49
50
51

52 53 *Future research* 54 55 56 57 58 59 60

1
2
3
4 Replications of this trial need to be performed to establish consistency of
5
6 research findings. Furthermore, examination of mediators of change such as
7
8 hopelessness in larger samples would add significantly to our knowledge of which
9
10 components of therapy are necessary for reduction of suicide ideation. Given the
11
12 absence of differences between conditions, it may be that one or more components
13
14 present in each treatment arm (e.g., giving hope, or participating in research) are
15
16 responsible for change in outcome. Identifying these components and altering their
17
18 presence by intensifying or omitting them in a new intervention trial would add to our
19
20 current knowledge mechanisms of change. Investigation of the causes of reductions in
21
22 suicide ideation is warranted.
23
24
25
26

27 *Clinical implications*

28
29
30
31 Despite the limitations, the current study clearly demonstrated that suicide
32
33 ideation declined irrespective of intervention, telephone counsellor contact or wait-list.
34
35 The addition of the TAU control condition is a significant improvement over previous
36
37 trials. The study demonstrated that, while CBT internet interventions are significantly
38
39 more effective in resolving depression symptoms than control conditions, these operate
40
41 no more successfully than current call centre practice in resolving suicide ideation.
42
43 Suicide ideation reduces significantly more effectively in those individuals who also
44
45 have resolving depression. The majority of people experiencing suicidal ideation do not
46
47 receive mental health treatment [28]. Internet-based or telephone based interventions
48
49 have the advantage that they can be easily accessed by large numbers of people, on an
50
51 anonymous basis. In line with Watts et al. [6], our findings demonstrate the importance
52
53 of not excluding suicidal participants from interventions designed to target depression.
54
55
56
57
58
59
60

Figure legends:**Figure 1:** Trial Flow Diagram**Figure 2:** Estimated marginal means for suicidal ideation across measurement occasions.**ACKNOWLEDGEMENTS**

Nicole Burgess coordinated and conducted data collection for the trial. Dawn O'Neil was involved in obtaining funding for the trial and coordinating Lifeline Australia's collaboration with the ANU. Assoc Prof Richard O'Kearney was a member of LF's PhD supervisory panel. Trevor Carlyon was also involved in coordinating Lifeline staff and volunteer involvement in the trial and supported Nicole in her role. The e hub team supported the trial implementation. We acknowledge the contributions of the Lifeline counselors who participated in this trial.

COMPETING INTERESTS

None.

FUNDING

1
2
3
4 Australian Research Council Linkage Grant (LP0667970), 2006, 3 years, \$279,325
5
6 (Christensen, Griffiths, Mackinnon, Smith), Internet technologies, health informatics,
7
8 and statistical models, and new delivery platforms in call centres (CIA).
9

10
11 HC and PB were supported by NHMRC 525411 and NHMRC Early Career Fellowship
12
13 1035262. KMG is supported by NHMRC Fellowship No. 525413.
14

15 16 17 **CONTRIBUTORSHIP**

18
19 HC, KG, AJM conceived the study, LF, HC, KG, AJM designed the study, HC, TD
20
21 drafted the initial manuscript, LF, PB, AJM prepared and cleaned the data and
22
23 conducted initial data analysis. All authors contributed to revised drafts.
24
25
26
27

28 **DATA SHARING**

29
30 The data from this study are available through email to Dr Philip Batterham
31
32 p.batterhan@anu.edu.au
33
34
35
36

37 **REFERENCE LIST**

- 38
39
40
41
42 1. Goldberg D and V Hillier. A scaled version of the General Health
43
44 Questionnaire. *Psycholog Med* 1979; **9**:139-145.
45
46 2. Lifeline Australia, Lifeline Australia Annual Report 2009-2010, 2010, Lifeline
47
48 Australia Ltd: Canberra.
49
50 3. Rhee W et al. Efficacy of brief telephone psychotherapy with callers to a suicide
51
52 hotline. *Suicide Life Threat Beh* 2005; **35**:317-28.
53
54
55
56
57
58
59
60

4. Kalafat J et al. An evaluation of crisis hotline outcomes. Part 1: Nonsuicidal crisis callers. *Suicide Life Threat Behav* 2007; **37**: 322-37.
5. Gould MS et al. An evaluation of crisis hotline outcomes. Part 2: Suicidal callers. *Suicide Life Threat Behav* 2007; **37**: 338-52.
6. Watts S et al. A clinical audit of changes in suicide ideas with internet treatment for depression. *BMJ Open* 2012; **2**:e001558.
7. van Spijker BA, van Straten A, Kerkhof AJ. The effectiveness of a web-based self-help intervention to reduce suicidal thoughts: a randomized controlled trial. *Trials* 2010; **11**: 25.
8. Farrer, L., et al.. Internet-based CBT for depression with and without telephone tracking in a national helpline: randomised controlled trial. *PLoS One* 2011; **6**: e28099.
9. Farrer L et al. Web-based cognitive behavior therapy for depression with and without telephone tracking in a national helpline: secondary outcomes from a randomized controlled trial. *J Med Internet Res* 2012; **14**: e68.
10. Nock MK et al. Cross-national analysis of the associations among mental disorders and suicidal behavior: findings from the WHO World Mental Health Surveys. *PLoS Med* 2009; **6**:e1000123.
11. Andrews G, Slade T. Interpreting scores on the Kessler Psychological Distress Scale (K10). *Aust N Z J Public Health* 2001; **25**: 494-7.
12. Christensen H, Griffiths KM, Jorm AF. Delivering interventions for depression by using the internet: randomised controlled trial. *BMJ* 2004; **328**: 265.

- 1
- 2
- 3
- 4 13. Tennant C. The general health questionnaire: a valid index of psychological
- 5 impairment in Australian populations. *Medical Journal of Australia* 1977; **2**:392-
- 6 394.
- 7
- 8
- 9
- 10
- 11 14. Goldney R., et al. Suicidal ideation: its enduring nature and associated
- 12 morbidity. *Acta Psychiatr Scand* 1991; **83**: 115-20.
- 13
- 14
- 15 15. Goldney R et al. Suicidal ideation in a random community sample: attributable
- 16 risk due to depression and psychosocial and traumatic events. *Australian and NZ*
- 17 *J Psychiat* 2000; **34**: 98-106.
- 18
- 19
- 20
- 21
- 22 16. Goldney R et al. Anger, suicidal ideation, and attempted suicide: a prospective
- 23 study. *Comprehen Psychiat* 1997; **38**: 264-8.
- 24
- 25
- 26 17. Goldney R et al. Suicidal ideation in a young adult population. *Acta Psychiatr*
- 27 *Scandin* 1989; **79**: 481-489.
- 28
- 29
- 30
- 31 18. Watson D et al. The measurement of suicidal ideation. *Crisis* 2001; **22**: 12-14.
- 32
- 33 19. Radloff LS. The CES-D scale: A self-report depression scale for research in the
- 34 general population. *Applied Psycholog Measurem* 1977; **1**:385-401.
- 35
- 36
- 37 20. Roberts RE, Vernon SW. The Center for Epidemiologic Studies Depression
- 38 Scale: It's use in a community sample. *Am J Psychiat* 1983; **140**: 41-46.
- 39
- 40
- 41 21. Lovibond SH, Lovibond PF. Manual for the Depression Anxiety Stress Scales.
- 42 Sydney: Psychology Foundation 2nd Edition. 1995.
- 43
- 44
- 45
- 46 22. Antony MMB et al. Psychometric properties of the 42-item and 21-item versions
- 47 of the Depression Anxiety Stress Scales (DASS) in clinical groups and a
- 48 community sample. *Psycholog Assess* 1998; **10**: 176-181.
- 49
- 50
- 51
- 52
- 53
- 54
- 55
- 56
- 57
- 58
- 59
- 60

- 1
2
3
4 23. Lovibond SaLP. The structure of negative emotional states: Comparison of the
5 Depression Anxiety Stress Scales (DASS) with the Beck Depression and
6 Anxiety Inventories. *Behav Res Ther* 1995; **33**: 8.
7
8
9
10
11 24. Thompson EA et al. The mediating roles of anxiety depression, and
12 hopelessness on adolescent suicidal behaviors. *Suicide Life Threat Behav* 2005;
13 **35**: 14-34.
14
15
16
17 25. Cuijpers P., et al. The effects of psychotherapy for adult depression on
18 suicidality and hopelessness: a systematic review and meta-analysis. *J Affect*
19 *Disord* 2013; **144**: 183-90.
20
21
22
23
24 26. Christensen H, Griffiths KM, and Farrer L. Adherence in internet interventions
25 for anxiety and depression. *J Med Internet Res* 2009; **11**: e13.
26
27
28
29 27. Flay BR. Efficacy and effectiveness trials (and other phases of research) in the
30 development of health promotion programs. *Prev Med* 1986; **15**: 451-74.
31
32
33 28. Michelmore L, Hindley P. Help-seeking for suicidal thoughts and self-harm in
34 young people: a systematic review. *Suicide Life Threat Behav* 2012; **42**: 507-24.
35
36
37
38
39
40
41
42
43
44
45
46
47
48
49
50
51
52
53
54
55
56
57
58
59
60



CONSORT 2010 checklist of information to include when reporting a randomised trial*

Section/Topic	Item No	Checklist item	Reported on page No
Title and abstract			
	1a	Identification as a randomised trial in the title	1
	1b	Structured summary of trial design, methods, results, and conclusions (for specific guidance see CONSORT for abstracts)	2
Introduction			
Background and objectives	2a	Scientific background and explanation of rationale	5
	2b	Specific objectives or hypotheses	7
Methods			
Trial design	3a	Description of trial design (such as parallel, factorial) including allocation ratio	7-9
	3b	Important changes to methods after trial commencement (such as eligibility criteria), with reasons	na
Participants	4a	Eligibility criteria for participants	7
	4b	Settings and locations where the data were collected	7
Interventions	5	The interventions for each group with sufficient details to allow replication, including how and when they were actually administered	9-10
Outcomes	6a	Completely defined pre-specified primary and secondary outcome measures, including how and when they were assessed	10-11
	6b	Any changes to trial outcomes after the trial commenced, with reasons	na
Sample size	7a	How sample size was determined	6 (ref 8-9)
	7b	When applicable, explanation of any interim analyses and stopping guidelines	na
Randomisation:			
Sequence generation	8a	Method used to generate the random allocation sequence	6 (ref 8-9)
	8b	Type of randomisation; details of any restriction (such as blocking and block size)	8
Allocation concealment mechanism	9	Mechanism used to implement the random allocation sequence (such as sequentially numbered containers), describing any steps taken to conceal the sequence until interventions were assigned	8 (and ref 8-9)
Implementation	10	Who generated the random allocation sequence, who enrolled participants, and who assigned participants to interventions	8
Blinding	11a	If done, who was blinded after assignment to interventions (for example, participants, care providers, those	8

		assessing outcomes) and how	
	11b	If relevant, description of the similarity of interventions	-
Statistical methods	12a	Statistical methods used to compare groups for primary and secondary outcomes	11-13
	12b	Methods for additional analyses, such as subgroup analyses and adjusted analyses	11-13
Results			
Participant flow (a diagram is strongly recommended)	13a	For each group, the numbers of participants who were randomly assigned, received intended treatment, and were analysed for the primary outcome	14
	13b	For each group, losses and exclusions after randomisation, together with reasons	Ref 8-9
Recruitment	14a	Dates defining the periods of recruitment and follow-up	Ref 8-9
	14b	Why the trial ended or was stopped	Ref 8-9
Baseline data	15	A table showing baseline demographic and clinical characteristics for each group	14
Numbers analysed	16	For each group, number of participants (denominator) included in each analysis and whether the analysis was by original assigned groups	14
Outcomes and estimation	17a	For each primary and secondary outcome, results for each group, and the estimated effect size and its precision (such as 95% confidence interval)	14-17
	17b	For binary outcomes, presentation of both absolute and relative effect sizes is recommended	
Ancillary analyses	18	Results of any other analyses performed, including subgroup analyses and adjusted analyses, distinguishing pre-specified from exploratory	17-19
Harms	19	All important harms or unintended effects in each group (for specific guidance see CONSORT for harms)	-
Discussion			
Limitations	20	Trial limitations, addressing sources of potential bias, imprecision, and, if relevant, multiplicity of analyses	21-22
Generalisability	21	Generalisability (external validity, applicability) of the trial findings	20-22
Interpretation	22	Interpretation consistent with results, balancing benefits and harms, and considering other relevant evidence	20-22
Other information			
Registration	23	Registration number and name of trial registry	1
Protocol	24	Where the full trial protocol can be accessed, if available	-
Funding	25	Sources of funding and other support (such as supply of drugs), role of funders	24

*We strongly recommend reading this statement in conjunction with the CONSORT 2010 Explanation and Elaboration for important clarifications on all the items. If relevant, we also recommend reading CONSORT extensions for cluster randomised trials, non-inferiority and equivalence trials, non-pharmacological treatments, herbal interventions, and pragmatic trials. Additional extensions are forthcoming: for those and for up to date references relevant to this checklist, see www.consort-statement.org.

**The effect of a web based depression intervention on suicide ideation. Secondary
outcome from a randomised controlled trial in a helpline.**

Helen Christensen¹, Louise Farrer², Philip J Batterham², Andrew Mackinnon³,
Kathleen M Griffiths² and Tara Donker¹

¹*The Black Dog Institute, University of New South Wales, Sydney, NSW, Australia;*

²*Centre for Mental Health Research, Australian National University, Canberra, ACT,*

Australia; ³Orygen Youth Health, University of Melbourne, Melbourne, VIC, Australia

Corresponding author:

Helen Christensen

The Black Dog Institute, University of New South Wales, Hospital Road, Prince of
Wales Hospital, Randwick 2031, Sydney, NSW, Australia

E: h.christensen@unsw.edu.au

P: +612 9382 9288

F: +61 2 9382 8208

Key words: Suicide, Depression, Telephone, Internet

Word count: 4,076

ABSTRACT

Objectives: The effect of web-based interventions for depression on suicide ideation in callers to helplines is not known. The aim of this study was to determine if web-based Cognitive Behaviour Therapy (CBT) with and without telephone support is effective in reducing suicide ideation in callers to a helpline compared to treatment as usual. A secondary aim was to examine the factors that predict change in suicide ideation. Putative predictors included level of baseline depression, suicide behaviour, baseline anxiety and type of intervention.

Design: Randomised Controlled Trial

Setting: Lifeline, Australia's 24-hour telephone counselling service Participants: 155 callers to a national helpline service with moderate to high psychological distress.

Interventions: participants were recruited and randomised to receive either 6 weeks of Internet CBT plus weekly telephone follow-up; Internet CBT only; weekly telephone follow-up only; or a wait-list treatment as usual (TAU) control group.

Primary and secondary outcome measures: Suicidal ideation was measured using four items from the 28-item General Health Questionnaire (GHQ-28; [1]). Predictors of change in ideation were tested using logistic regression analysis.

Results: Regardless of intervention condition, participants showed significant reductions in suicidal ideation over twelve months ($p < 0.001$). Higher baseline suicidal behaviour decreased the odds of remission of suicidal ideation at post-intervention (OR: 0.409 ($p < 0.001$)). However, change in depression over the course of the interventions was associated with improvement in suicide ideation (OR: 1.165, $p < 0.001$).

Conclusions: Suicide ideation declines with and without proactive intervention. Improvements in depression are associated with the resolution of suicide ideation. Specific interventions focussing on suicide ideation should be further investigated.

TRIAL REGISTRATION: Controlled-Trials.com ISRCTN93903959.

ARTICLE SUMMARY

Article focus:

- To evaluate the effectiveness of a web-based Cognitive Behaviour Therapy intervention on suicide ideation in a helpline.
- To examine predictors of suicide ideation resolution

Key messages:

- Irrespective of intervention condition, participants' suicidal ideation declined over time at post-test, and six months. Declines in suicidal ideation remained significant at 12 month follow-up
- Suicide ideation reduces significantly more in those individuals who also had resolving depression.
- While CBT internet interventions are significantly more effective in resolving depression symptoms compared to control conditions, these operate no more successfully than current call centre practice in resolving suicide ideation.
- Our findings demonstrate the importance of not excluding suicidal participants from interventions designed to target depression.

Strengths and limitations of this study:

- The study used a Randomised Controlled Trial.

- The addition of the TAU control condition is a significant improvement over previous trials.
- Because all scores were initially high at baseline, the lower scores on the second occasion of measurement may have been due to reversion to the mean.

For peer review only

INTRODUCTION

Suicide prevention interventions are delivered every day through **helplines** and through chat in call centres. In Australia, Lifeline reports that over 50 high risk telephone calls are answered daily [2]. However, despite the load taken by **helplines** in responding to callers at risk, there has been little investigation of the role of these **services** in reducing suicide risk, or in reducing risk factors associated with suicide risk, such as depression.

To date, the research evidence from suicide **helplines** has largely focussed on evaluating interventions using the telephone, and to our knowledge, only one randomised controlled trial (RCT) has been conducted. This study [3] evaluated the effects of two brief telephone psychotherapies in reducing general distress [Solution Focussed Brief Therapy (SFBT) and Common Factors Therapy (CFT)] compared to a waitlist control condition using 85 individuals recruited via a suicide hotline. Outcome measures included the Brief Psychiatric Rating Scale, and the Beck Depression Inventory. Drop out was high in the SFBT condition (50%) compared to the CFT condition (37%) and across both conditions drop out occurred before the first session. Relative to the waitlist control, significant reductions in several measures of depression and anxiety symptoms were found in participants who completed the interventions, with effect sizes estimated in the range of .67 and .93. However, outcomes on suicide specific measures were not reported. A highly cited, although uncontrolled study, used a follow-up design (pre-post outcomes) to evaluate the effectiveness of a **helpline** for non-suicidal crisis callers (n=1617, of whom 801 provided follow-up data) [4]. Callers' levels of crisis and hopelessness were rated during the calls and found to decrease during the course of the call. In a second study, focussing on 1,085 participants who

1
2
3
4 were suicidal Gould et al. [5] found that levels of intent to die over the course of a call
5
6 decreased and that there were continuing falls in hopelessness and psychological pain
7
8 over the continuing weeks.
9

10 Web-based interventions are now more frequently used in **helpline services**, and
11
12 research of their usefulness is emerging in community settings. Two studies of online e-
13
14 health applications targeting either risk factors for suicide (depression) or suicide
15
16 ideation were published in 2012. The first was an uncontrolled service evaluation which
17
18 found a 30% reduction in suicide ideas [6] over the course of a depression web
19
20 program. The second was a randomised controlled trial of an online intervention which
21
22 examined the effectiveness and cost effectiveness of an automated six module, six
23
24 week, intervention specifically targeting suicide ideation for individuals with mild to
25
26 moderate suicidal thoughts. The intervention was based on Cognitive Behaviour
27
28 Therapy (CBT), with Dialectical Behaviour Therapy, Problem Solving Therapy and
29
30 **Mindfulness-Based Cognitive Therapy** included. Significant reductions in suicidal
31
32 thoughts were found relative to Control condition. The mean incremental cost-
33
34 effectiveness ratio (ICER) was estimated to be €34,727 (US \$41,325) for an additional
35
36 treatment response, indicating annual cost savings per treatment responder [7].
37
38
39
40
41
42
43

44 In 2012, we published the results of a randomised controlled trial investigating
45
46 the effects of a web application in reducing depression and anxiety in a large **helpline**
47
48 [8, 9]. This trial compared four conditions: a treatment as usual condition (TAU), where
49
50 the participant could call the crisis line at any time; a telephone **call back** service where
51
52 the participant was contacted for 10 minutes **systematically** once a week for six weeks; a
53
54 CBT internet program for depression combined with a evidence-based depression
55
56
57
58
59
60

1
2
3
4 information website, and a combined condition which incorporated telephone call back
5
6 and the web programs. Both the web programs alone, and the web programs in
7
8 combination with the telephone call back, were effective at 12 months in reducing
9
10 depression symptoms, relative to TAU. This study also measured suicide ideation, and
11
12 in this paper, we report the results using this outcome measure.
13

14
15 Suicide ideation is a substantial risk factor for suicide attempt. Theories of
16
17 suicide causation point to the importance of depression and hopelessness in leading to
18
19 increased levels of suicide ideation and attempts (see [10]). We hypothesised that
20
21 suicide ideation would be reduced over time in those conditions which successfully
22
23 reduced depression. Accordingly, we first examined the effect of the four interventions
24
25 conditions on suicide ideation. For suicide ideation, we hypothesised that the web CBT
26
27 intervention focussing on reducing depression—with or without the telephone call
28
29 back— would result in significantly greater reduction of suicide ideation than the other
30
31 two conditions, which did not include interventions specifically aiming to reduce
32
33 depression. We then used logistic regression to explore which factors, in addition to
34
35 any effect of the intervention, predicted changes in suicide ideation at post-test. These
36
37 factors were baseline suicidality, baseline depression, baseline anxiety, age, gender,
38
39 education, workforce participation, and changes in depression and anxiety over the
40
41 course of the intervention (pre to post-test).
42
43
44
45
46
47
48

49 **METHOD**

50
51 Data for this study were collected as part of a randomized controlled trial of the
52
53 impact of a Web-based CBT and psychoeducation intervention on depression symptoms
54
55 [9]. The trial comprised four arms: (i) a Web-based CBT intervention; (ii) a Web-based
56
57
58
59
60

1
2
3
4 CBT intervention delivered in conjunction with a telephone call back; (iii) the **proactive**
5 **call back** telephone line alone, and (iv) TAU, which consisted of the opportunity for the
6
7
8 participant to contact the helpline if needed.
9

10 11 **Ethics statement**

12 **Ethics approval for the trial was granted by the Australian National University**
13 **Human Research Ethics Committee (Protocol no. 2007/12).**
14
15
16
17
18
19

20 21 **Participants**

22
23 Participants were 155 callers to Lifeline, Australia's 24-hour telephone
24 counselling service, recruited between July 2007 and January 2009. **High distress or**
25 **acutely suicidal participants were excluded.** A total of 910 callers agreed to be screened
26
27
28 by telephone. Of these, 142 (15.6%) were subsequently unable to be contacted, 61 (7%)
29
30 were later unwilling to participate, and 337 (37%) did not meet eligibility criteria.
31
32 Respondents were not eligible for inclusion in the trial if they (1) scored less than 22 on
33
34 the **Kessler Psychological Distress Scale [11] (138/337, 41%), a brief screening scale**
35 **used clinically and epidemiologically,** (2) had, by self-report, a diagnosis of
36
37 schizophrenia or bipolar disorder (89, 26%), or (3) did not have Internet access (67,
38
39 20.0%). Ineligible participants were offered brochures sent by mail containing
40
41 information about the Web intervention used in the trial. Of the 370 people eligible for
42
43 inclusion in the trial, 155 completed informed consent procedures and pre-intervention
44
45 assessments, and were randomly assigned to the trial conditions. The trial flow is
46
47 illustrated in Figure 1.
48
49
50
51
52
53
54

55 56 **Procedure**

57
58
59
60

1
2
3
4 Following screening and informed consent procedures, pre-intervention data
5
6 were obtained through a self-report questionnaire mailed to participants. A block
7
8 randomization procedure was used, with stratification based on site of recruitment and
9
10 severity of psychological distress at screening. Allocation of participants to trial
11
12 conditions was conducted independently by a research assistant not involved in the day-
13
14 to-day running of the trial. Following randomization, all participants were contacted by
15
16 telephone and were mailed the relevant materials for their allocated condition.
17
18
19

20 21 **Intervention and Trial Conditions**

22
23
24 The Web-only intervention consisted of Web-based psychoeducation (in week 1
25
26 provided by BluePages: bluepages.anu.edu.au) combined with Web-based CBT (in
27
28 weeks 2–6 provided by MoodGYM: moodgym.anu.edu.au). BluePages is an
29
30 educational site that provides information on evidence-based interventions for
31
32 depression. MoodGYM is a first generation, interactive web application which delivers
33
34 cognitive behaviour therapy through a series of 5 modules, captures user behaviour and
35
36 self-report symptoms on validated scales, and offers an online CBT workbook. Both of
37
38 these Web programs have been shown to reduce depression symptoms in community
39
40 users [12]. A printed manual containing week-by-week instructions for accessing the
41
42 Web programs (via a login) was mailed to participants at the start of the trial.
43
44
45
46

47
48 In the Web with telephone call back condition, participants completed the Web
49
50 intervention and also received a weekly 10-minute telephone call from a Lifeline
51
52 telephone counsellor. The purpose of these calls was to address any issues associated
53
54 with the participants' use of the intervention.
55
56
57
58
59
60

1
2
3
4 In the telephone **call back** only condition, participants received a weekly 10-minute
5
6 telephone call initiated from a telephone counsellor. **These scripted calls focused on**
7
8 **various environmental and lifestyle factors associated with depression.**
9

10
11 In the TAU condition, participants received neither the call back nor Web interventions,
12
13 but were free to use the **helpline** service as needed. Participants in this condition were
14
15 wait-listed to receive the Web-only intervention following completion of the 6-month
16
17 follow-up.
18
19

20
21 **As in the TAU condition, participants in all 3 other conditions were also** able to use the
22
23 **helpline** service as needed, which provided usual emergency or support services. **Self-**
24
25 **reported contacts with the service were taken at each follow-up occasion for each of the**
26
27 **4 conditions.** Any use of this service during the intervention period was additional to the
28
29 10-minute telephone calls offered **proactively as part of the call back component of the**
30
31 **Telephone call back condition and the Internet plus call back condition.**
32
33
34
35

36 Measures

37 *Suicidal ideation*

38
39
40 Suicidal ideation was measured using four items from the 28-item General
41
42 Health Questionnaire (GHQ-28; [1]). The four questions measure suicidal ideation,
43
44 asking respondents to indicate how they have felt over the last few weeks. The first two
45
46 items: 'Have you recently felt that life is not worth living' and 'Have you recently found
47
48 yourself wishing you were dead and away from it all' were scored on the 4-point scale:
49
50 'Not at all', 'No more than usual', 'Rather more than usual' or 'Much more than usual'.
51
52
53
54
55 The remaining two items: 'Have you recently had thoughts of the possibility that you
56
57
58
59
60

1
2
3
4 might do away with yourself’ and ‘Have you recently found that the idea of taking your
5
6 own life kept coming into your mind’ were scored on the 4-point scale: ‘Definitely not’,
7
8 ‘I don’t think so’, ‘Has crossed my mind’ or ‘Definitely has’. Responses were then
9
10 categorised in a binary manner, with the negatively-worded response categories (Not at
11
12 all, No more than usual, definitely not, and I don’t think so) scored with a 0, and the
13
14 positively-worded response categories scored with a 1. Binary scores for each item were
15
16 summed to provide a total scale score ranging from 0 to 4, with a higher score
17
18 indicating higher suicidal ideation. This scoring system is that used for all items and sub
19
20 scores of the GHQ-28, which has been validated in Australian populations [13]. The
21
22 four suicide items from the GHQ-28 have been used extensively by Goldney and
23
24 colleagues to assess suicidal ideation in a number of Australian samples [14-16]. These
25
26 items have been validated relative to other well established measures of suicidal intent
27
28 and hopelessness [17, 18]. Cronbach Alpha for the 4 items at baseline in the present
29
30 sample was 0.90.
31
32
33
34
35
36

37 *Predictor variables*

38
39 Depression symptoms were measured by the Center for Epidemiologic Studies
40
41 Depression Scale (CES-D)[19], a widely used, 20 item scale with strong reliability and
42
43 validity [19, 20], with scores ranging from 0 to 60. Anxiety symptoms were assessed
44
45 using the 14-item anxiety scale from the Depression, Anxiety and Stress Scales (DASS-
46
47 A;[21]. Each of these items is rated on a four-point scale from 0 (“did not apply to me at
48
49 all”) to 4 (“applied to me most of the time”), with total scores ranging from 0 to 42. The
50
51 reliability and validity of the DASS-A scale has been demonstrated previously ([22,
52
53 23]).
54
55
56
57
58
59
60

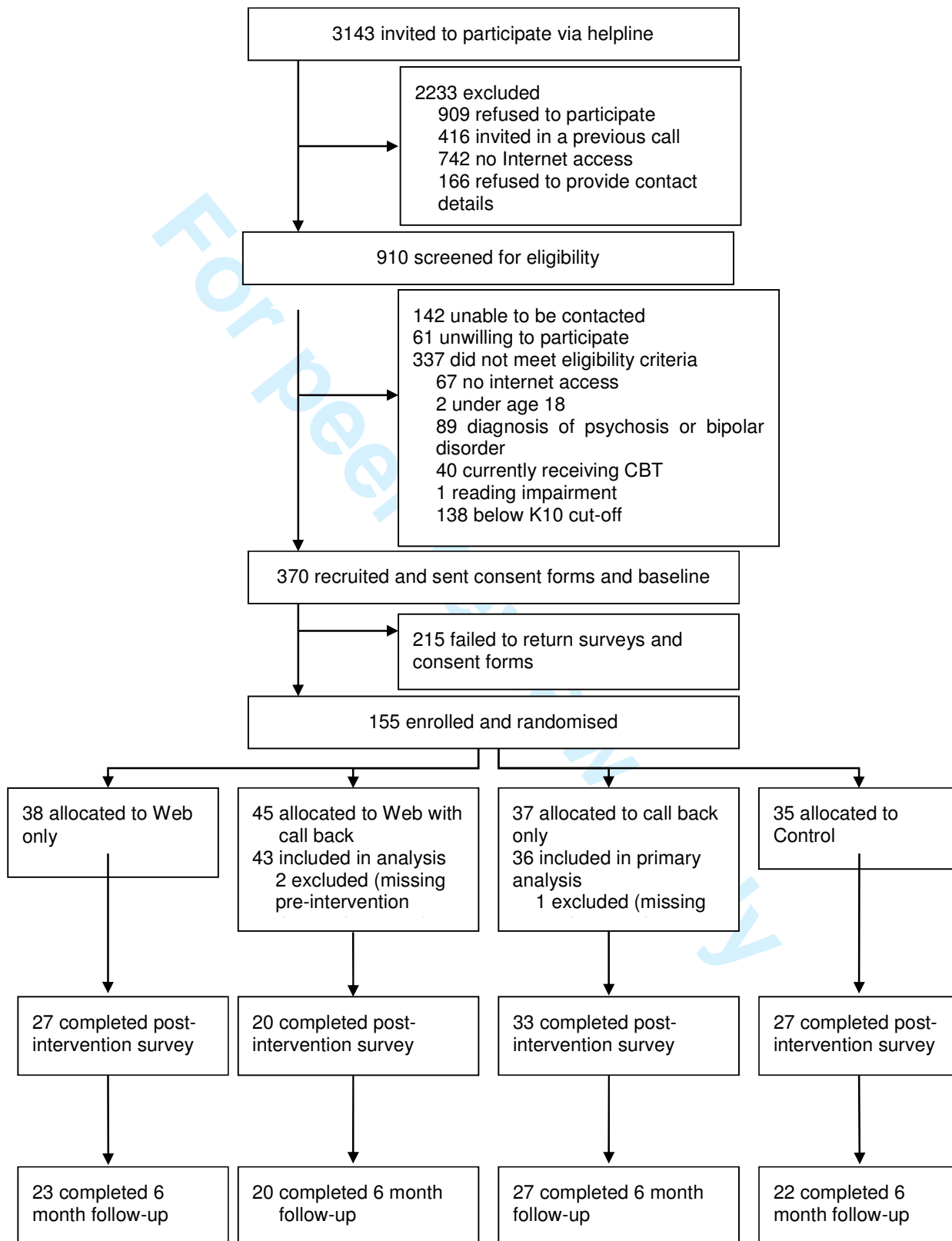
1
2
3
4 Demographic variables including age, gender, educational attainment and
5
6 workforce participation were assessed by self-report in the pre-test survey. Educational
7
8 attainment was based on two items assessing highest level of education, which were
9
10 used to form an estimate of total number of years of education. Workforce participation
11
12 was based on an item assessing employment status, with “unemployed” and “not in the
13
14 labour force” categorised as non-participation, and employed “full-time” or “part-time”
15
16 categorised as participation.
17
18

19 20 21 22 **Statistical analyses**

23
24 Differential changes in suicide ideation across the four conditions were assessed
25
26 using mixed model repeated measures analysis of variance. Within-person variation was
27
28 modeled using an unstructured covariance matrix and degrees of freedom were
29
30 estimated using Satterthwaite’s approximation. This model included the fixed effects of
31
32 condition, time (pre, post, 6 month, 12 month) and the interaction between condition
33
34 and time. The presence of a significant interaction between an active intervention and
35
36 the TAU condition over time would indicate a significant reduction in suicidal ideation
37
38 for that condition relative to control. Within-condition change in suicidal ideation was
39
40 also examined using this model. Mixed models yield an intention-to-treat analysis,
41
42 using all available measurement points for each participant under the assumption that
43
44 withdrawal data are missing at random. Two participants with missing suicidal ideation
45
46 scores at baseline were omitted from analyses. To evaluate whether the scoring of the
47
48 suicidal ideation scale influenced the findings, the models were re-estimated using a
49
50 continuous score of suicidal ideation, assessed at each time point as the sum of
51
52 responses to the four ideation items (range 0-12).
53
54
55
56
57
58
59
60

1
2
3
4 Logistic regression was then used to examine predictors of suicidal ideation at
5
6 post-intervention, defined as a suicidal ideation score of 0. In particular, the hypothesis
7
8 was assessed that reduction in depression symptoms from pre- to post-intervention
9
10 predicted remission of ideation. Only completers of the post-test assessment were
11
12 included in this analysis. A depression symptom change score from pre- to post-
13
14 intervention was calculated by subtracting post-intervention CES-D scores from pre-
15
16 intervention scores, with positive scores indicating a reduction/improvement in
17
18 symptoms. The effect of anxiety symptoms and changes in anxiety were assessed in the
19
20 same way. Suicidal ideation scores (ranging from 0 to 4) were coded categorically as
21
22 “0” (score ≥ 1 , indicating some suicidal ideation) or “1” (score = 0, no ideation). To
23
24 control for baseline depression, baseline anxiety, baseline suicidality and intervention
25
26 condition, these variables were included in the regression simultaneously with the
27
28 depression change score. In addition, age, gender, education and workforce
29
30 participation were included in the models due to their potential associations with
31
32 suicidal ideation.
33
34
35
36
37
38
39
40
41
42
43
44
45
46
47
48
49
50
51
52
53
54
55
56
57
58
59
60

Figure 1: Trial Flow Diagram



RESULTS

Descriptives and changes in suicide ideation

Table 1 shows the characteristics of the sample at baseline, with mental health measures for post-intervention also presented. The age range was 19-72, with a median age of 42 years. The majority of participants (57%) had graduated from high school. Most of the participants were female and approximately half were in the work force. Depression and anxiety scores were considerably higher than the cut points for the scales used at both time points, although there were decreases from pre- to post-intervention. Likewise, high rates of suicidality were observed, with 62.7% and 41.5% reporting suicidal ideation at pre- and post-intervention respectively.

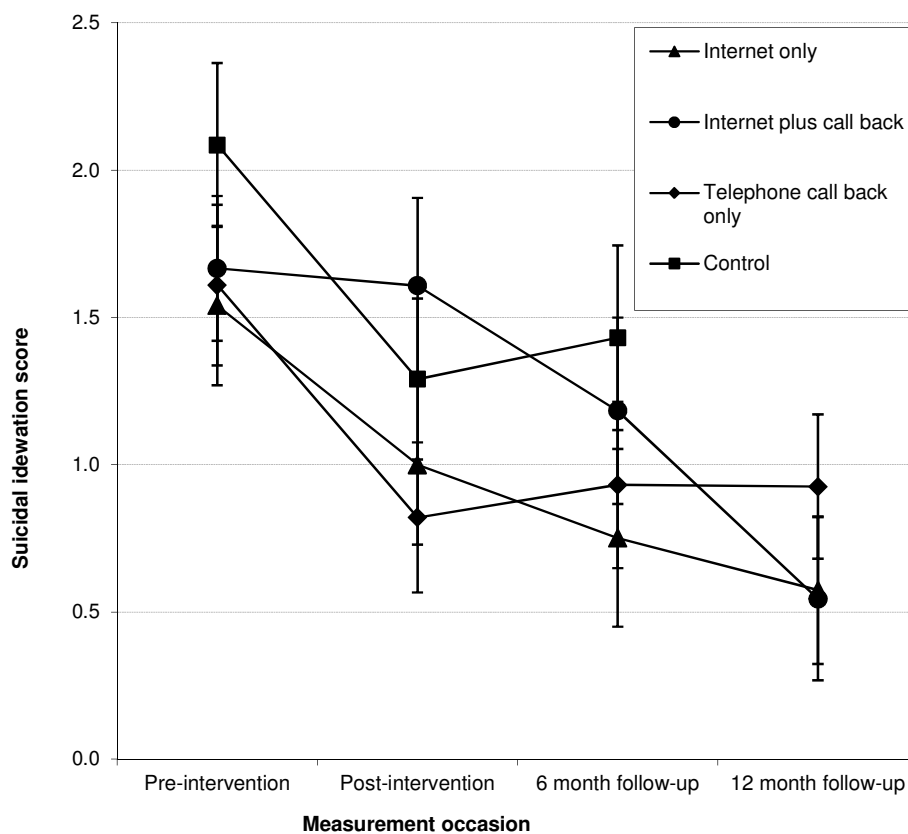
Table 1. Characteristics of participants

	N	Mean	SD
Age	155	41.49	12.35
Years of education	150	13.47	2.67
CES-D depression score, pre-intervention	152	36.25	10.22
CES-D depression score, post-intervention	107	28.68	14.40
DASS anxiety score, pre-intervention	154	13.34	8.03
DASS anxiety score, post-intervention	107	11.45	10.16
GHQ suicidal ideation score - pre-intervention	153	1.73	1.64
GHQ suicidal ideation score - post-intervention	106	1.00	1.45
	N	Count	%
<i>Gender</i>	155		
Female		127	81.9%
Male		28	18.1%
<i>Workforce participation</i>	155		
Participation		72	46.5%
Non-participation		83	53.5%
<i>Treatment condition</i>	155		
Internet only		38	24.5%
Internet plus call back		45	29.0%
Telephone call back only		37	23.9%
Treatment as usual		35	22.6%

Mixed models: Effect of intervention type on suicidal ideation

Suicide ideation declined significantly over the 12 month period ($F(3, 95.4) = 15.06, p < 0.001$). However, differences in change over time between conditions were not significant ($F(8, 115.8) = 1.13, p = .352$). Figure 2 shows the estimated marginal means for suicidal ideation across measurement occasions.

Figure 2: Estimated marginal means for suicidal ideation across measurement occasions.



Within group contrasts

As can be seen in Table 2, planned contrasts revealed that participants in the call back only and TAU conditions showed significant declines in suicidal ideation from pre- to post-intervention and from pre-intervention to 6 month follow-up. Declines in

suicidal ideation from pre-intervention to 12 month follow-up were significant for participants in all conditions in which the difference could be assessed.

Table 2. Within group contrast estimates and significance tests for suicidal ideation

Condition	Statistic	Contrast		
		Pre-intervention to post-intervention	Pre-intervention to 6 month follow-up	Pre-intervention to 12 month follow-up
Internet only	Contrast estimate	-.54	-.79	-.97
	Test value	$t(109.8) = -1.98$	$t(101.5) = -2.50$	$t(73.2) = -3.65$
	<i>p</i> value	.050	.016	<.001
Internet + telephone callback	Contrast estimate	-.06	-.48	-1.12
	Test value	$t(121.3) = -.20$	$t(106.2) = -1.45$	$t(80.8) = -3.91$
	<i>p</i> value	.85	.15	<.001
Telephone callback only	Contrast estimate	-.79	-.68	-.68
	Test value	$t(105.6) = -3.05$	$t(100.0) = -2.22$	$t(78.0) = -2.61$
	<i>p</i> value	.003	.029	.011
Treatment as usual	Contrast estimate	-.80	-.66	
	Test value	$t(108.0) = -2.89$	$t(103.1) = -1.96$	
	<i>p</i> value	.005	.053	

Between group contrasts

No significant differences were found between conditions at post-intervention, 6 month follow-up, or 12 month follow-up: Internet only vs. TAU (post-test: Contrast estimate = .26; $p = .51$; 6-month follow-up: Contrast estimate = -.14, $p = .77$); Internet only vs. Telephone **callback** only (post-test: Contrast estimate = .25; $p = .51$; 6-month follow-up: Contrast estimate = -.11, $p = .80$; 12-month follow-up: Contrast estimate = -.28; $p = .45$); Internet + telephone **callback** vs. TAU (post-test: Contrast estimate = .74;

1
2
3
4 $p = .07$; 6-month follow-up: Contrast estimate = .17, $p = .72$); Internet + telephone call
5 **back** vs Telephone **call back** only (post-test: Contrast estimate = .73; $p = .07$; 6-month
6
7
8 follow-up: Contrast estimate = .19, $p = .67$; 12-month follow-up: Contrast estimate = -
9
10 .44; $p = .26$); Telephone **call back** only vs TAU (post-test: Contrast estimate = .01; $p =$
11
12 .99; 6-month follow-up: Contrast estimate = -.02, $p = .96$); Internet only vs Internet +
13
14 telephone call back (post-test: Contrast estimate = -.48; $p = .24$; 6-month follow-up:
15
16 Contrast estimate = -.31, $p = .51$; 12-month follow-up: Contrast estimate = .16; $p = .69$).
17
18 To test whether the lack of between-group effects were related to scaling effects of the
19
20 suicidal ideation measure, the models were re-estimated using a continuous score for
21
22 suicidal ideation. As with the original analysis, there was significant reduction over time
23
24 in suicidal ideation scores ($F(3, 94.5) = 14.08, p < 0.001$). Again, there was no
25
26 significant interaction between condition and time ($F(8, 89.9) = 0.81, p = 0.598$),
27
28 indicating no significant difference in change of suicidal ideation scores between the
29
30 intervention groups across the study period.
31
32
33
34
35
36

37 *Effect sizes for suicidal ideation*

38
39
40
41
42 At post-intervention, effect sizes were 0.10 (95% CI: -0.43 to 0.64) for the
43
44 Internet only condition and 0.04 (95% CI: -0.54 to 0.62) for the Internet plus call back
45
46 condition, compared to the TAU condition. Compared to call back only, effect sizes
47
48 were 0.28 (95% CI: -0.24 to 0.79) for the Internet only condition and 0.41 (95% CI: -
49
50 0.15 to 0.98) for the Internet plus call back condition. At 6 month follow-up, effect sizes
51
52 were 0.36 (95% CI: -0.24 to 0.96) for the Internet only condition and 0.20 (95% CI: -
53
54 0.42 to 0.81) for the Internet plus **call back** condition, compared to the TAU condition.
55
56
57
58
59
60

1
2
3
4 Compared to telephone call back only, effect sizes were 0.08 (95% CI: -0.48 to 0.63) for
5
6 the Internet only condition and 0.07 (95% CI: -0.51 to 0.65) for the Internet plus
7
8 telephone call back condition. At 12 month follow-up, effect sizes were 0.28 (95% CI: -
9
10 0.33 to 0.89) for the Internet only condition and 0.45 (95% CI: -0.24 to 1.13) for the
11
12 Internet plus call back condition, compared with the call back only condition.
13
14

15 16 17 *Predictors of suicide ideation*

18
19 A logistic regression analysis was designed to measure predictors of suicide
20
21 ideation change taking account of intervention condition. Consistent with findings
22
23 reported above, compared to baseline (M:1.73; SD: 1.64; N=153) suicidal ideation
24
25 significantly decreased in the whole sample at post-test (M:1.00; SD:1.45; N=106), 6-
26
27 month (M:0.99; SD:1.54; N=91) and 12-month follow-up (M:0.66; SD:1.27; N=56).
28
29 However, as there was no significant interaction effect between condition and time on
30
31 suicidal ideation, this interaction was not retained in the model. Table 3 shows the
32
33 results for the model with interactions excluded. As would be expected, higher levels of
34
35 suicide ideation at baseline were associated with significantly reduced odds of absence
36
37 of suicide ideation at post-test. Neither baseline depression nor anxiety was significantly
38
39 associated with no suicide ideation at post-test. There were also no significant effects of
40
41 any of the demographic characteristics. However, a greater improvement in depression
42
43 symptoms from pre- to post-intervention was associated with increased odds of no
44
45 suicidal ideation at post-intervention. At baseline, the majority of participants (n=93;
46
47 62.0%) reported both depressive symptoms and suicidal ideation. This proportion
48
49 decreased at all time-points following the interventions [post-test: 44 (41.5%); 6-months
50
51 follow-up: 30 (33.0%); 12-months follow-up: 13 (23.2%)]. Based on McNemar's tests
52
53
54
55
56
57
58
59
60

using completers of each assessment, these decreases were significant at all three time points ($P = 0.005$, $P < 0.001$ and $P = 0.002$ at post, 6-months and 12-months respectively). There was no significant difference in the proportion of participants with depression but no suicidal ideation, except at 12-month follow-up [baseline: $n=53$ (35.3%); post-test: $n=42$ (39.6%), 6-months follow-up: $n=28$ (30.8%); 12-months follow-up: 18 (32.1%); $P = 1.00$; $P = 0.15$ and $P = 0.019$ at post, 6-months and 12-months respectively).

Table 3. Logistic regression analyses of remission of suicidal ideations (completers only)

	OR	p	95% CI	
			Lower	Upper
Suicidality score at baseline	0.409	<0.001	0.249	0.671
<i>Condition</i>	--	0.239		
TAU	1.000	--		
Internet only	1.408	0.699	0.248	8.001
Internet + telephone call back	0.323	0.234	0.050	2.082
Telephone call back only	2.442	0.284	0.476	12.512
Baseline depression score	0.926	0.081	0.849	1.010
Depression change score	1.165	<0.001	1.070	1.267
Baseline anxiety score	1.066	0.256	0.955	1.190
Anxiety change score	0.986	0.836	0.859	1.130
Gender: F vs M	0.992	0.993	0.174	5.646
Age	1.051	0.054	0.999	1.106
Years of education	0.897	0.438	0.681	1.181
Not in labour force vs. employed	0.915	0.899	0.233	3.592

*only main effects included.

DISCUSSION

This was the first study to examine the effect of online interventions on suicide ideation in a helpline using a randomised controlled trial design. In contrast to our hypothesis, results from our study indicated that irrespective of intervention condition, participants' suicidal ideation declined over time at post-test, and six months. Declines were slower to become significant for those randomised to the Internet plus call back condition. For all groups, declines in suicidal ideation remained significant at 12 month follow-up. Although there were small effects at post-test and medium effect sizes at follow-up among the intervention conditions, there were no consistent overall effects for condition. Participants having higher baseline suicide scores were more likely to continue experiencing suicidal ideation at post-intervention, while those with greater improvements in depression symptoms were less likely to experience suicide ideation at post-intervention.

Several studies have shown reductions of suicide ideation in uncontrolled pre post trials of counselling or internet CBT (e.g., [5, 6]). This is, to our knowledge the first randomised controlled trial of an intervention in a helpline, comparing a number of active interventions to treatment as usual. The study is also unique in that it examined predictors of ideation change, taking account of the effect of intervention. As previously reported for this study [9], web based CBT, and web CBT with counsellor call back significantly reduced depression symptoms relative to TAU. These findings indicate that suicide ideation did not follow the same pattern as depression in response to the intervention, and, more generally, that suicide ideation was not strictly tethered to

1
2
3
4 depression. Nevertheless, the regression analysis found that taking account of
5
6 intervention type, changes in depression did predict later lower levels of ideation,
7
8 suggesting that depression change is an important albeit not necessarily the only factor
9
10 in reducing ideation. We interpret these findings to suggest that change in depression, in
11
12 whatever way it is brought about, is a contributing variable to reduction in suicide
13
14 ideation. A second explanation for the findings is that changes in suicide ideation and
15
16 changes in depression follow different time trajectories, with ideation resolving faster
17
18 than depression. The two constructs are likely to be interactive, with ideation reduction
19
20 assisting in lowering depression symptoms over time. Hopelessness may mediate both
21
22 depression and ideation but may influence each within different time frames [24].
23
24 Interestingly, a recent meta-analysis [25] has examined the effects of face-to-face
25
26 psychotherapy for adult depression on suicidality. It found a non-significant effect of
27
28 psychotherapy in the reduction of suicidality but a significant effect for depression,
29
30 consistent with concept that depression and suicidality are not strictly tethered.
31
32
33

34
35 Suicide ideation resolved in our TAU condition, consistent with the notion that ideation
36
37 is responsive to events or processes that occurred with the passage of time for
38
39 participants with access to “usual services”. We do know that at 6 weeks TAU
40
41 participants were more likely to make more calls to the helpline service compared to
42
43 participants in the Internet alone condition, but not to the other conditions. Eighty one
44
45 percent of TAU participants reported that they made at least one call, and approximately
46
47 55% had made 3 or more calls. These calls may have contributed to the suicide
48
49 resolution in this and the other two conditions. However, these spontaneous calls were
50
51 unlikely to be responsible for the differences in depression resolution, given that the
52
53 Internet alone group also showed drops in depression levels.
54
55
56
57
58
59
60

1
2
3
4 The finding that all groups showed suicide resolution, however, does not rule
5
6 out the possibility that specific psychological or proactive interventions will support
7
8 faster resolution of suicide ideation symptoms than the interventions reported here.
9
10 Indeed the intervention developed by Van Spijker et al. [7] may be one of these specific
11
12 interventions.
13

14 15 16 17 *Limitations of the study* 18

19
20
21
22 One explanation of the failure to find an effect of intervention type on suicide
23
24 ideation outcomes is that these findings are due to regression to the mean. Because all
25
26 scores were initially high at baseline, scores would be expected to revert to the mean on
27
28 the second occasion of measurement. Intervention completion rates were lower in our
29
30 study relative to some other trials of web-based treatments for depression [26] but not of
31
32 other telephone-based services [3]. The reasons for this are unclear. The current trial
33
34 was a true effectiveness trial employing a volunteer workforce for recruitment and call
35
36 back, and hence might be expected to be associated with greater recruitment and
37
38 adherence problems relative to the more controlled environment of an efficacy study
39
40 [27]. Also, the interventions were short, delivered by non-health professionals, and may
41
42 have constituted the only service received. The measure used to assess suicidality used
43
44 items that categorised outcomes dichotomously, and then summed responses, as per
45
46 scale score recommendations. Moreover, these scores were then further dichotomised in
47
48 the regression analysis. This is essentially a conservative treatment of data. We did
49
50 investigate whether other continuous scoring methods might reveal intervention effects.
51
52 These data did not yield any relationships. The generalisability of the findings to
53
54
55
56
57
58
59
60

1
2
3
4 severely suicidal individuals is also limited, given acutely suicidal or highly distressed
5
6 callers were specifically not invited to participate. We had relatively low success in
7
8 recruiting participants to the trial, a finding that reflects the nature of effectiveness trials
9
10 using targeted samples such as ours [27] and where a mismatch occurs between the
11
12 expectation of phoning a crisis centre and being 'diverted' to another program. Finally,
13
14 we were not able to analyse the influence of other psychological characteristics on
15
16 treatment outcome, such as hopelessness, or support from family, which might affect
17
18 both depression and suicidal ideation levels. These measures were not included in our
19
20 study.
21
22
23

24 25 *Future research*

26
27
28 Replications of this trial need to be performed to establish consistency of
29
30 research findings. Furthermore, examination of mediators of change such as
31
32 hopelessness in larger samples would add significantly to our knowledge of which
33
34 components of therapy are necessary for reduction of suicide ideation. Given the
35
36 absence of differences between conditions, it may be that one or more components
37
38 present in each treatment arm (e.g., giving hope, or participating in research) are
39
40 responsible for change in outcome. Identifying these components and altering their
41
42 presence by intensifying or omitting them in a new intervention trial would add to our
43
44 current knowledge mechanisms of change. Investigation of the causes of reductions in
45
46 suicide ideation is warranted.
47
48
49

50 51 *Clinical implications*

52
53
54
55
56
57
58
59
60

1
2
3
4 Despite the limitations, the current study clearly demonstrated that suicide
5
6 ideation declined irrespective of intervention, telephone counsellor contact or wait-list.
7
8 The addition of the TAU control condition is a significant improvement over previous
9
10 trials. The study demonstrated that, while CBT internet interventions are significantly
11
12 more effective in resolving depression symptoms than control conditions, these operate
13
14 no more successfully than current call centre practice in resolving suicide ideation.
15
16 Suicide ideation reduces significantly more effectively in those individuals who also
17
18 have resolving depression. The majority of people experiencing suicidal ideation do not
19
20 receive mental health treatment [28]. Internet-based or telephone based interventions
21
22 have the **advantage** that they can be easily accessed by large numbers of people, on an
23
24 anonymous basis. In line with Watts et al. [6], our findings demonstrate the importance
25
26 of not excluding suicidal participants from interventions designed to target depression.
27
28
29
30
31
32

33 **ACKNOWLEDGEMENTS**

34
35
36
37 Nicole Burgess coordinated and conducted data collection for the trial. Dawn O'Neil
38
39 was involved in obtaining funding for the trial and coordinating Lifeline Australia's
40
41 collaboration with the ANU. Assoc Prof Richard O'Kearney was a member of LF's PhD
42
43 supervisory panel. Trevor Carlyon was also involved in coordinating Lifeline staff and
44
45 volunteer involvement in the trial and supported Nicole in her role. The e hub team
46
47 supported the trial implementation. We acknowledge the contributions of the Lifeline
48
49 counselors who participated in this trial.
50
51
52
53
54

55 **COMPETING INTERESTS**

None.

FUNDING

Australian Research Council Linkage Grant (LP0667970), 2006, 3 years, \$279,325

(Christensen, Griffiths, Mackinnon, Smith), Internet technologies, health informatics, and statistical models, and new delivery platforms in call centres (CIA).

HC and PB were supported by NHMRC 525411 and NHMRC Early Career Fellowship 1035262. KMG is supported by NHMRC Fellowship No. 525413.

REFERENCE LIST

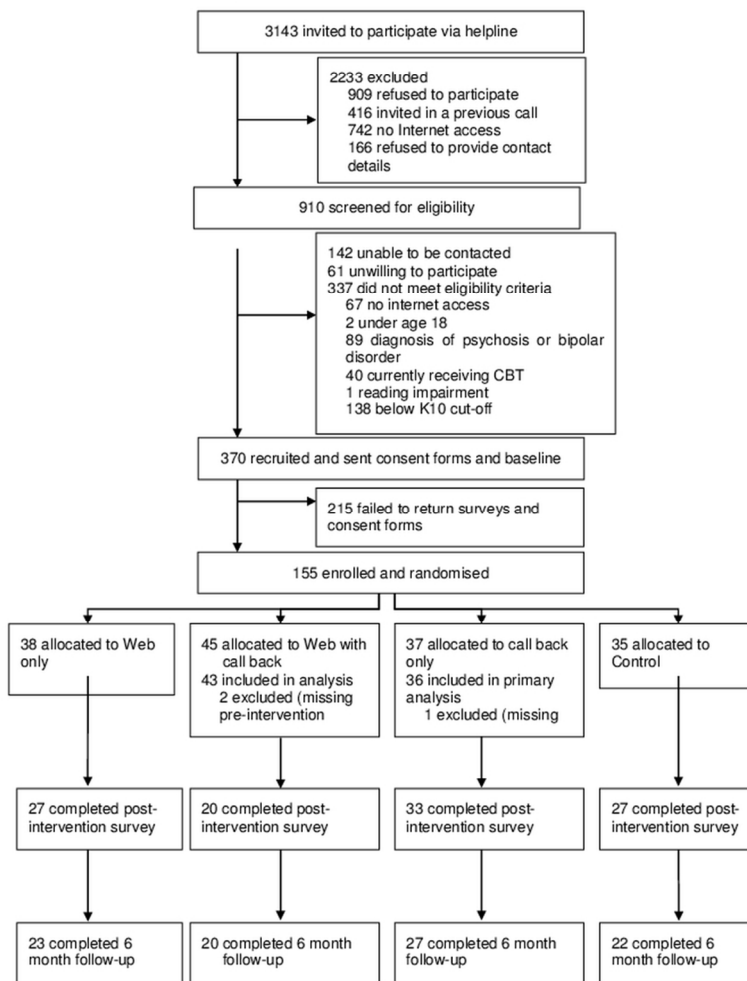
1. Goldberg D and V Hillier. A scaled version of the General Health Questionnaire. *Psycholog Med* 1979; **9**:139-145.
2. Lifeline Australia, Lifeline Australia Annual Report 2009-2010, 2010, Lifeline Australia Ltd: Canberra.
3. Rhee W et al. Efficacy of brief telephone psychotherapy with callers to a suicide hotline. *Suicide Life Threat Beh* 2005; **35**:317-28.
4. Kalafat J et al. An evaluation of crisis hotline outcomes. Part 1: Nonsuicidal crisis callers. *Suicide Life Threat Behav* 2007; **37**: 322-37.
5. Gould MS et al. An evaluation of crisis hotline outcomes. Part 2: Suicidal callers. *Suicide Life Threat Behav* 2007; **37**: 338-52.

- 1
2
3
4 6. Watts S et al. A clinical audit of changes in suicide ideas with internet treatment
5 for depression. *BMJ Open* 2012; **2**:e001558.
6
7
- 8
9 7. van Spijker BA, van Straten A, Kerkhof AJ. The effectiveness of a web-based
10 self-help intervention to reduce suicidal thoughts: a randomized controlled trial.
11 *Trials* 2010; **11**: 25.
12
13
- 14
15 8. Farrer, L., et al.. Internet-based CBT for depression with and without telephone
16 tracking in a national helpline: randomised controlled trial. *PLoS One* 2011; **6**:
17 e28099.
18
19
- 20
21 9. Farrer L et al. Web-based cognitive behavior therapy for depression with and
22 without telephone tracking in a national helpline: secondary outcomes from a
23 randomized controlled trial. *J Med Internet Res* 2012; **14**: e68.
24
25
- 26
27 10. Nock MK et al. Cross-national analysis of the associations among mental
28 disorders and suicidal behavior: findings from the WHO World Mental Health
29 Surveys. *PLoS Med* 2009; **6**:e1000123.
30
31
- 32
33 11. Andrews G, Slade T. Interpreting scores on the Kessler Psychological Distress
34 Scale (K10). *Aust N Z J Public Health* 2001; **25**: 494-7.
35
36
- 37
38 12. Christensen H, Griffiths KM, Jorm AF. Delivering interventions for depression
39 by using the internet: randomised controlled trial. *BMJ* 2004; **328**: 265.
40
41
- 42
43 13. Tennant C. The general health questionnaire: a valid index of psychological
44 impairment in Australian populations. *Medical Journal of Australia* 1977; **2**:392-
45 394.
46
47
- 48
49 14. Goldney R., et al. Suicidal ideation: its enduring nature and associated
50 morbidity. *Acta Psychiat Scand* 1991; **83**: 115-20.
51
52
53
54
55
56
57
58
59
60

15. Goldney R et al. Suicidal ideation in a random community sample: attributable risk due to depression and psychosocial and traumatic events. *Australian and NZ J Psychiat* 2000; **34**: 98-106.
16. Goldney R et al. Anger, suicidal ideation, and attempted suicide: a prospective study. *Comprehen Psychiat* 1997; **38**: 264-8.
17. Goldney R et al. Suicidal ideation in a young adult population. *Acta Psychiatr Scandin* 1989; **79**: 481-489.
18. Watson D et al. The measurement of suicidal ideation. *Crisis* 2001; **22**: 12-14.
19. Radloff LS. The CES-D scale: A self-report depression scale for research in the general population. *Applied Psycholog Measurem* 1977; **1**:385-401.
20. Roberts RE, Vernon SW. The Center for Epidemiologic Studies Depression Scale: It's use in a community sample. *Am J Psychiat* 1983; **140**: 41-46.
21. Lovibond SH, Lovibond PF. Manual for the Depression Anxiety Stress Scales. Sydney: Psychology Foundation 2nd Edition. 1995.
22. Antony MMB et al. Psychometric properties of the 42-item and 21-item versions of the Depression Anxiety Stress Scales (DASS) in clinical groups and a community sample. *Psycholog Assess* 1998; **10**: 176-181.
23. Lovibond SaLP. The structure of negative emotional states: Comparison of the Depression Anxiety Stress Scales (DASS) with the Beck Depression and Anxiety Inventories. *Behav Res Ther* 1995; **33**: 8.
24. Thompson EA et al. The mediating roles of anxiety depression, and hopelessness on adolescent suicidal behaviors. *Suicide Life Threat Behav* 2005; **35**: 14-34.

- 1
- 2
- 3
- 4 25. Cuijpers P., et al. The effects of psychotherapy for adult depression on
- 5 suicidality and hopelessness: a systematic review and meta-analysis. *J Affect*
- 6 *Disord* 2013; **144**:.183-90.
- 7
- 8
- 9
- 10 26. Christensen H, Griffiths KM, and Farrer L. Adherence in internet interventions
- 11 for anxiety and depression. *J Med Internet Res* 2009; **11**: e13.
- 12
- 13 27. Flay BR. Efficacy and effectiveness trials (and other phases of research) in the
- 14 development of health promotion programs. *Prev Med* 1986; **15**: 451-74.
- 15
- 16 28. Michelmore L, Hindley P. Help-seeking for suicidal thoughts and self-harm in
- 17 young people: a systematic review. *Suicide Life Threat Behav* 2012; **42**: 507-24.
- 18
- 19
- 20
- 21
- 22
- 23
- 24
- 25
- 26
- 27
- 28
- 29
- 30
- 31
- 32
- 33
- 34
- 35
- 36
- 37
- 38
- 39
- 40
- 41
- 42
- 43
- 44
- 45
- 46
- 47
- 48
- 49
- 50
- 51
- 52
- 53
- 54
- 55
- 56
- 57
- 58
- 59
- 60

Figure 1: Trial Flow Diagram

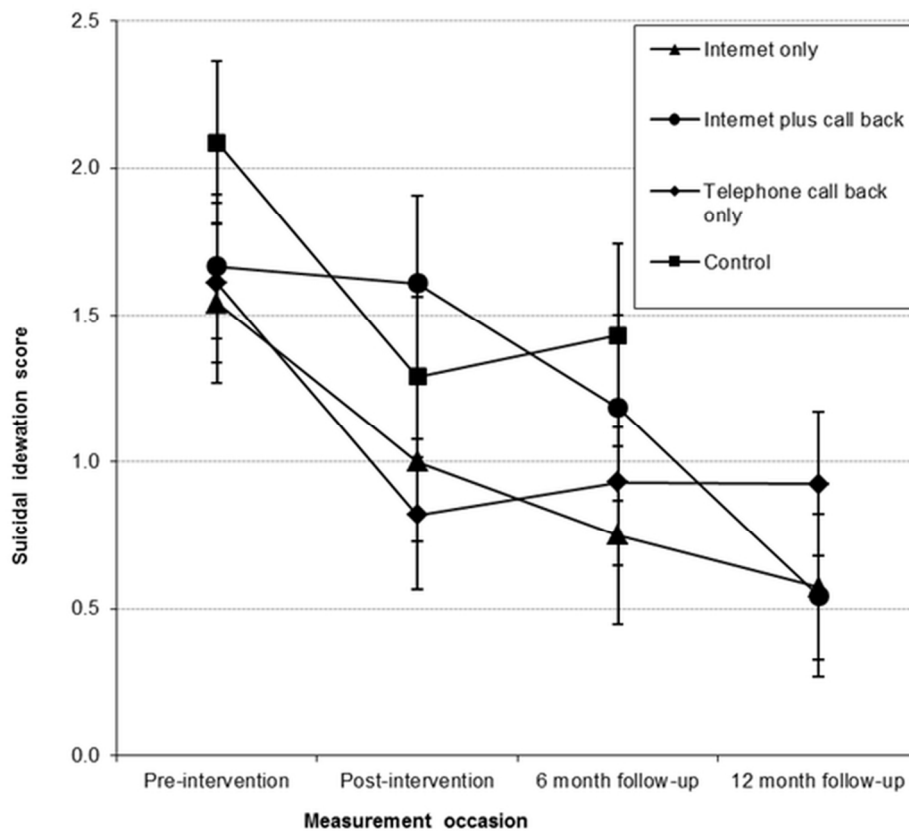


90x116mm (300 x 300 DPI)

1
2
3
4
5
6
7
8
9
10
11
12
13
14
15
16
17
18
19
20
21
22
23
24
25
26
27
28
29
30
31
32
33
34
35
36
37
38
39
40
41
42
43
44
45
46
47
48
49
50
51
52
53
54
55
56
57
58
59
60

1
2
3
4
5
6
7
8
9
10
11
12
13
14
15
16
17
18
19
20
21
22
23
24
25
26
27
28
29
30
31
32
33
34
35
36
37
38
39
40
41
42
43
44
45
46
47
48
49
50
51
52
53
54
55
56
57
58
59
60

Figure 2: Estimated marginal means for suicidal ideation across measurement occasions.



94x90mm (300 x 300 DPI)

only