

# Three-year follow-up of a randomised clinical trial of intravenous versus oral iron for anaemia in pregnancy

Alhossain A Khalafallah,<sup>1,2,3</sup> Amanda E Dennis,<sup>2,3,4</sup> Kath Ogden,<sup>2</sup> Iain Robertson,<sup>3</sup> Ruth H Charlton,<sup>1,2,4</sup> Jackie M Bellette,<sup>1,2,4</sup> Jessica L Shady,<sup>1,2,4</sup> Nep Blesingk,<sup>1,2</sup> Madeleine Ball<sup>3</sup>

**To cite:** Khalafallah AA, Dennis AE, Ogden K, *et al.* Three-year follow-up of a randomised clinical trial of intravenous versus oral iron for anaemia in pregnancy. *BMJ Open* 2012;**2**:e000998. doi:10.1136/bmjopen-2012-000998

► Prepublication history and additional material for this paper are available online. To view these files please visit the journal online (<http://dx.doi.org/10.1136/bmjopen-2012-000998>).

Received 11 February 2012  
Accepted 4 September 2012

This final article is available for use under the terms of the Creative Commons Attribution Non-Commercial 2.0 Licence; see <http://bmjopen.bmj.com>

For numbered affiliations see end of article

## Correspondence to

Dr Alhossain A Khalafallah; [khalafallah@dhhs.tas.gov.au](mailto:khalafallah@dhhs.tas.gov.au)

## ABSTRACT

**Background:** To date, there are no data available concerning the impact of iron therapy on the long-term well-being and health-related quality of life (HRQoL) in pregnancy.

**Objective:** To assess the long-term effect of iron therapy on HRQoL in pregnancy.

**Design:** This is a follow-up study conducted between January 2010 and January 2011 of an earlier randomised open-label clinical trial of intravenous and oral iron versus oral iron for pregnancy-related iron deficiency anaemia. We used a modified version of the SF-36 questionnaire together with the original prospective HRQoL data collected during and after pregnancy.

**Participants and interventions:** Of the original evaluable 183 pregnant Caucasian women randomised to receive oral iron or a single intravenous iron polymaltose infusion followed by oral iron maintenance, 126 women completed the follow-up HRQoL study.

**Methods:** The participants were followed up 4 weeks after treatment, predelivery and postdelivery for a median period of 32 months (range, 26–42) with a well-being and HRQoL questionnaire using a modified SF-36 QoL-survey and child growth charts as set by the Australasian Paediatric Endocrine Group (APEG).

**Results:** Patients who received intravenous iron demonstrated significantly higher haemoglobin and serum ferritin levels ( $p < 0.001$ ). There were strong associations between iron status and a number of the HRQoL parameters, with improved general health ( $p < 0.001$ ), improved vitality (physical energy) ( $p < 0.001$ ), less psychological downheartedness ( $p = 0.005$ ), less clinical depression ( $p = 0.003$ ) and overall improved mental health ( $p < 0.001$ ). The duration of breastfeeding was longer ( $p = 0.046$ ) in the intravenous iron group. The babies born in both groups recorded similarly on APEG growth chart assessments.

**Conclusions:** Our data suggest that HRQoL is improved until after pregnancy in anaemic pregnant women by repletion of their iron stores during pregnancy. About 80% of the intravenous iron group showed a maintained normal ferritin until delivery with long-term benefits. Further studies to confirm these findings are warranted.

## ARTICLE SUMMARY

### Article focus

- Health-related quality-of-life (HRQoL) assessment during and after pregnancy in 126 women with iron deficiency who received either a single infusion of intravenous iron polymaltose followed by oral iron maintenance or oral iron only.
- Study of postnatal depression and its association with treatment arms and iron status.
- Assessment of breastfeeding duration and correlation to mothers' iron status.

### Key messages

- HRQoL during and after pregnancy is improved significantly in anaemic pregnant women by repletion of their iron stores during pregnancy.
- About 80% of the intravenous iron group showed a maintained normal ferritin until delivery with long-term benefits such as prolongation of the breastfeeding period and less postnatal clinical depression.
- There were strong associations between iron status and a number of the HRQoL scales with improved general health ( $p = 0.021$ ), improved physical energy ( $p = 0.016$ ), less psychological downheartedness ( $p = 0.005$ ), less clinical depression ( $p = 0.003$ ) and an overall improved mental component scale ( $p < 0.001$ ). The duration of breastfeeding was longer ( $p = 0.046$ ) in women who had received intravenous iron.

### Strengths and limitations of this study

- This study reports a novel finding in terms of a correlation between both postnatal depression and the breastfeeding period with iron status.
- There are limited data available concerning the quality of life during and after pregnancy, which makes the scientific input of the current study important.
- Limitations of our study include that the modified questionnaire was in part a retrospective HRQoL evaluation, and this should ideally have been prospectively conducted.
- Another limitation is the relatively small number of women studied.

## INTRODUCTION

Currently, there are no data available concerning quality-of-life outcomes and other long-term effects of intravenous versus oral iron therapy on anaemia during pregnancy. In addition to the physical impact of iron deficiency anaemia (IDA) on pregnant women,<sup>1–3</sup> IDA is a potential risk factor for preterm delivery and subsequent low birth weight, and may be associated with inferior neonatal health.<sup>3–4</sup> Infants born to women with IDA are more likely to become anaemic themselves, which in turn is known to have a potential effect on an infant's mental and motor development.<sup>5–9</sup> Although iron supplementation during pregnancy is a widely practised public health measure, there are some concerns regarding iron replacement therapy and its long-term effect, especially the intravenous form.<sup>10–11</sup> Therapeutic response to oral iron therapy is not always adequate in pregnant women, due to difficulties associated with oral intake of the tablets and their side effects, which impacts negatively on compliance.<sup>3–10–11</sup>

In the past, intravenous iron was associated with undesirable and sometimes serious side effects that limited its use.<sup>12</sup> Recently, new type II iron complexes have been developed with the potential to reverse iron deficiency with less side effects than their predecessors.<sup>12–14</sup> Despite increasing evidence for the safety of the newer preparations in both pregnant and general populations, intravenous iron continues to be underutilised.<sup>15</sup>

Earlier, we reported on a randomised controlled trial (PMID: 20546462) of intravenous followed by oral iron therapy versus oral iron therapy only for moderate IDA in pregnancy.<sup>14</sup> The results of the earlier analysis showed that intravenous iron polymaltose was associated with greater improvements in haemoglobin (Hb) levels and iron stores compared to oral iron alone in pregnancy-related IDA.<sup>14</sup> Here, we report the results of a follow-up assessment of the same cohort of patients. We studied the effects of both treatment types on the perceived health-related quality of life (HRQoL) as measured by a modified SF-36 questionnaire. The effect of iron therapy on breastfeeding rates and on the general well-being of the babies born to these women was measured by child growth charts set by the Australasian Paediatric Endocrine Group (APEG).

## PATIENTS AND METHODS

### Rationale and objectives

An initial prospective randomised controlled trial was conducted between March 2007 and January 2009 at the Launceston General Hospital (LGH), a tertiary referral centre for Northern Tasmania, Australia. The initial study assessed Hb and serum ferritin levels after intravenous followed by oral iron therapy versus oral iron therapy only. The current study constitutes a follow-up on the earlier one and took place between January 2010 and January 2011 and focused on HRQoL, breastfeeding duration and child health. Informed consent was obtained from all participants in accordance with the Declaration

of Helsinki. The original and the follow-up studies were approved by the Tasmanian Human Research Ethics Committee and registered in the Australian New Zealand Clinical Trials Registry (<http://www.ANZCTR.org.au/ACTRN12609000177257.aspx>) and the WHO Clinical Trials Registry (<http://www.who.int/trialsearch/trial.aspx?trialid=ACTRN12609000596202>).

In the original study, we prospectively assessed HRQoL at baseline prior to treatment in the second trimester, 4 weeks after the initiation of treatment, in the third trimester before delivery, and at 6–8 weeks postdelivery. In the follow-up study, an HRQoL questionnaire was completed that incorporated the original questionnaire plus additional parameters such as the length of the breastfeeding period and occurrence of postnatal depression as well as child growth data. This was performed at a median of 32 months postintervention in order to assess the long-term effects of both treatment types on mothers' HRQoL in relation to data from the earlier study. This questionnaire, although completed prospectively, had a retrospective component that asked the participating mothers the same questions again that they had previously answered prospectively. These data were compared with the mothers' original prospective QoL data for validation purposes.

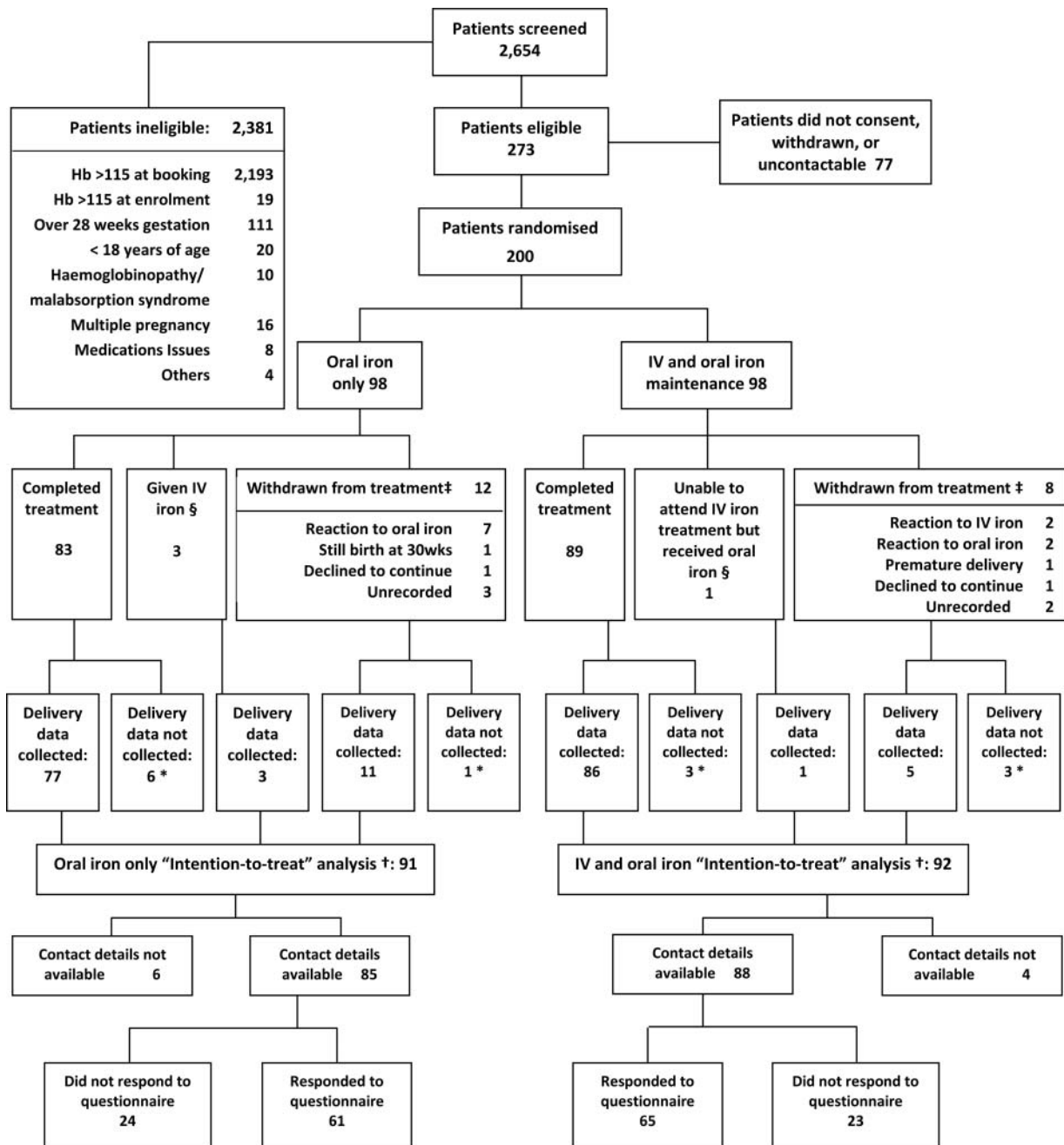
### Participants

Pregnant women aged 18 years or above who presented to the LGH with IDA between 2007 and 2009 were invited to participate. In the original study (figure 1), 196 Caucasian pregnant women aged 18 years or above were identified who had moderate IDA, defined as Hb  $\leq$  115 g/l (reference range (RR) 120–160 g/l), and low iron stores, based on serum ferritin levels  $<$  30  $\mu$ g/l (RR 30–440  $\mu$ g/l).

Of the original evaluable 183 pregnant Caucasian women randomised to receive oral iron or a single intravenous iron polymaltose infusion, 126 women completed the QoL follow-up study (table 1). The median age was 29 years at enrolment (range, 21–43); and the median follow-up period was 32 months (range, 26–42) with an average follow-up period of 36 months postdelivery.

### Randomisation and interventions

Informed consent was obtained from all patients. Treatment arms were allocated in blocks of 10 by computer-generated random assignment, and allocation was done by concealed envelopes. This was done by the LGH pharmacy department in order to avoid possible bias. The oral-only treatment arm comprised iron sulphate 250 mg tablets once daily, (elemental iron 80 mg, Abbott, Australasia Pty Ltd) to be taken daily within 2 days after booking until delivery. The intravenous arm required a single intravenous infusion of iron polymaltose (Ferrosig, Sigma Pharmaceuticals, Sydney, NSW, Australia) within 1 week after first antenatal visit followed by oral iron identical to the other arm. Pre-enrolment, there were no significant differences in



**Figure 1** Patients flow chart. \*Fourteen patients were admitted late in labour, and no blood samples were taken before delivery. †The primary hypothesis examined the change in haemoglobin levels between the time of booking and immediately prior to delivery; an 'intention-to-treat' analysis was performed according to original randomisation group on those patients who had blood samples taken before delivery, whether or not the treatment was completed as per the protocol. ‡Twenty-one patients withdrew from the trial treatments, and all but one of these patients agreed to continued collection of haematological and other trial data; eight patients gave no reason for withdrawal. §Five patients did not complete the intended treatments, but did not choose to withdraw themselves; three patients in the oral iron group were treated with intravenous iron when their haemoglobin was judged not to have responded adequately to oral iron, while one patient was unable to attend for intravenous iron treatment.

the dietary iron intake or supplement intake between the two groups based on a specially designed questionnaire addressing these issues.<sup>14</sup> Patients assigned to intravenous iron polymaltose received a 100 mg test dose dissolved in 50–100 ml normal saline infused over 30 min. Clinical observation and vital signs were assessed

initially and every 15 min from the start of the infusion. After the test-dose was tolerated, the remainder of the iron polymaltose dose was infused. The total dose of intravenous iron polymaltose was calculated according to the patients' body weight at their first antenatal visit and entry Hb level according to the product guidelines; iron

**Table 1** Patient characteristics

|  | Intravenous iron group         | Oral iron group                |
|--|--------------------------------|--------------------------------|
| Number of patients   | 64                             | 62                             |
| Vaginal delivery   | 45                             | 46                             |
| Caesarean section  | 19                             | 16                             |
| Median age (years)   | 28 (range; 21–43)              | 28.5 (range; 22–42)            |
| Mean age (years)   | 27.5                           | 28                             |
| Median time between trial intervention and delivery (months) | 2.7 (range; 2.6–6)             | 2.8 (range; 2.2–5.3)           |
| Median time of follow-up (months)                            | 28                             | 29                             |
| Baby birth weight (g)  | Median 3523 (range; 1315–4920) | Median 3480 (range; 1330–4928) |
| Median initial Hb (g/l)                                      | 105                            | 108                            |
| Median Hb after intervention and prior to delivery (g/l)     | 128                            | 118                            |
| Median Hb postdelivery (g/l)                                 | 118 (range; 86–146)            | 112 (range; 78–137)            |
| Blood transfusion requirement                                | None                           | Two patients                   |

Hb, haemoglobin.

dose in mg (50 mg/1 ml)=body weight (maximum 90) in kg×[target Hb (120 g/l)–actual Hb (in g/l)×constant factor (0.24)+iron depot (500)].<sup>14</sup>

### Outcome measurement

Two HRQoL questionnaires were administered during the initial and follow-up studies. First, a clinical questionnaire was completed prospectively by trained midwives at 4 weeks after initiation of treatment, at 28 and 34 weeks gestation, and then 6–8 weeks postdelivery. This questionnaire assessed four aspects: energy levels, activity, tolerance and side effects of the treatment. This was used to guide individual patient clinical decision-making as well as to provide a safety audit of the trial treatments.<sup>14</sup> Second, a prospective/retrospective survey was conducted between June and October 2010 by trained research personnel via phone interview using a modified version of the SF-36 HRQoL questionnaire, similar to a version published previously.<sup>16 17</sup> Additional modifications for this study included: (1) use of eleven of the 36 questions (table 2) and (2) the women were asked to recall their response to each of the questions at four timepoints; pretrial prior to commencement of iron therapy during the pregnancy, 4 weeks after the start of iron therapy, 1 week after delivery and the last 4 weeks prior to the telephone questionnaire contact (table 2). This was compared in a retrospective manner to the same questions answered earlier prospectively by the participants at these different timepoints. In order to validate the retrospective use of the modified SF-36

questionnaire to assess the women's HRQoL during and after pregnancy, we estimated the associations of the physical activity component of the prospective monitoring questionnaire following entry into the trial with the Physical Component Scale values of the modified SF-36 at each of the timepoints. We hypothesised that the association would be greatest at 4 weeks after enrolment compared to trial entry, time of delivery or at the time of questionnaire completion. In addition, data concerning breastfeeding and the health of the child were collected from the baby's growth booklet. This included breastfeeding duration, baby gender, age, weight and previous hospitalisation, if any, in addition to the baby's sleep quality since birth and specific growth data for the children as set by the APEG. Hb and ferritin levels for participants at delivery were available for all participants; however, no further testing was performed during the follow-up. The principal investigators, including the statistician, evaluated the questionnaire results data.

### Statistical methods

The HRQoL scores that form the raw data for this analysis are rank-order in nature. Means and SDs of the scores were estimated using generalised estimating equations for illustrative purposes only. Physical and mental composite scores were calculated in the modified SF-36 according to the SF-12 scoring guidelines.<sup>16 17</sup> Group comparison and covariate effect size calculation, OR (with 95% CIs and p values) were estimated using repeated measures of ordinal logistic regression, with covariates selected for inclusion by backward stepwise regression (p-value for exclusion 0.22) from maternal age, Hb, ferritin, Socio-Economic Indexes for Areas (based on the Collector District of residence of mothers), quality of sleep, use and duration of breastfeeding, hospitalisation of the baby, baby gender and mode of delivery. This included randomisation group covariate interactions in the starting model with exclusion of those interactions using the above criteria. When iron status was selected for inclusion in the model, the association between iron status (ferritin) and HRQoL was reported independently of the trial treatment group. p Values were corrected for multiple comparisons where necessary by the Holm method. The effect of intravenous iron versus oral iron on time of cessation of breastfeeding was compared by estimation of the HR with 95% CIs and p values by Cox proportional hazards regression adjusted for covariates selected for inclusion by backward stepwise regression (p-value for exclusion 0.22). The time to cessation of breast-feeding was taken from the subject's baby growth booklet for all participants. Neonatal growth in the treatment groups was compared by multivariate third-order polynomial regression as an approximation to APEG growth assessment. The iron status variables used in the multivariate regression models were selected by stepwise regression. All HRQoL statistical analyses were performed using Stata SE for Windows V.11.1 (StataCorp, College Station, Texas, USA).

**Table 2** Comparison of the questions in the SF-36 and the abbreviated health-related quality-of-life (HRQoL) questionnaire used in this study

| Questionnaires*   | Original SF-36   | Modified short-HRQoL   |
|---|--|--|
| Time specified for subject response   | Either in at the time of analysis or in past 4 weeks   | Evaluated at four time periods: before treatment; after 4 weeks of treatment; after delivery; and during the past 4 weeks before interview |
| Question: stem and detailed item†   | Question number and response options   | Question number and response options   |
| In general, would you say your health is  | Q1: Excellent; Very good; Good; Fair; Poor   | Q1: Excellent; Very good; Good; Fair; Poor   |
| The following questions are about activities you might do during a typical day. Does your health now limit you in these activities? If so, how much?  | Yes, limited a lot; Yes, limited a little; No, not limited at all                                | Yes, limited a lot; Yes, limited a little; No, not limited at all  |
| Moderate activities, such as moving a table, pushing a vacuum cleaner, bowling, or playing golf   | Q3b  | Q2a  |
| Climbing several flights of stairs  | Q3d  | Q2b  |
| During the past 4 weeks, how much of the time have you had any of the following problems with your work or other regular daily activities as a result of your physical health?  | All of the time; Most of the time; Some of the time; A little of the time; None of the time      | All of the time; Most of the time; Some of the time; A little of the time; None of the time  |
| Accomplished less than you would like   | Q4b  | Q3a  |
| Were limited in the kind of work or other activities  | Q4c  | Q3b  |
| During the past 4 weeks, how much of the time have you had any of the following problems with your work or other regular daily activities as a result of any emotional problems (such as feeling depressed or anxious)? | All of the time; Most of the time; Some of the time; A little of the time; None of the time      | All of the time; Most of the time; Some of the time; A little of the time; None of the time  |
| Accomplished less than you would like   | Q5b  | Q6a  |
| Did work or other activities less carefully than usual  | Q5c  | Q6b  |
| Have you felt calm and peaceful?  | Q9d  | Q4a  |
| Did you have a lot of energy?   | Q9e  | Q4b  |
| Have you felt downhearted and depressed?  | Q9f  | Q4c  |
| Have you been diagnosed with or treated for depression or postnatal depression since the birth of your baby?  | Not included   | Q4d: Diagnosed: Yes/No; Treated: Yes/No  |
| During the past 4 weeks, how much of the time has your physical health or emotional problems interfered with your social activities (like visiting friends, relatives, etc)?  | Q10: All of the time; Most of the time; Some of the time; A little of the time; None of the time | Q5: All of the time; Most of the time; Some of the time; A little of the time; None of the time  |
| During the past 4 weeks, how much did pain interfere with your normal work (including both work outside the home and housework)?  | Q8: Not at all; A little bit; Moderately; Quite a bit; Extremely                                 | Not included   |

\*Not all of the original SF-36 questions are included in this list. All the questions shown in this list, except for the last original SF-36 question about pain, were included in the questionnaire administered in this study. Where the questionnaire response was the same this is indicated, and where the response differed from the original SF-36 wording the new responses were shown. The order in which the questions (eg, Q1 as first question, or Q5b as question subset 5 s question) were administered in the original and modified questionnaires is shown.

†Questions: Q1, Q2, etc denotes question numbers.

## RESULTS

Of the original 196 patients randomised to receive the trial medications (98 intravenous plus oral iron; 98 oral iron only), 183 patients completed the trial by collection of blood for iron status at the time of delivery. Data of

HRQoL were collected from 126 of the 183 women who completed the original trial, representing 69% of the original cohort, while 57 (31%) of the 183 patients had moved away, were uncontactable or did not respond to follow-up requests (see [figure 1](#) for description of patient

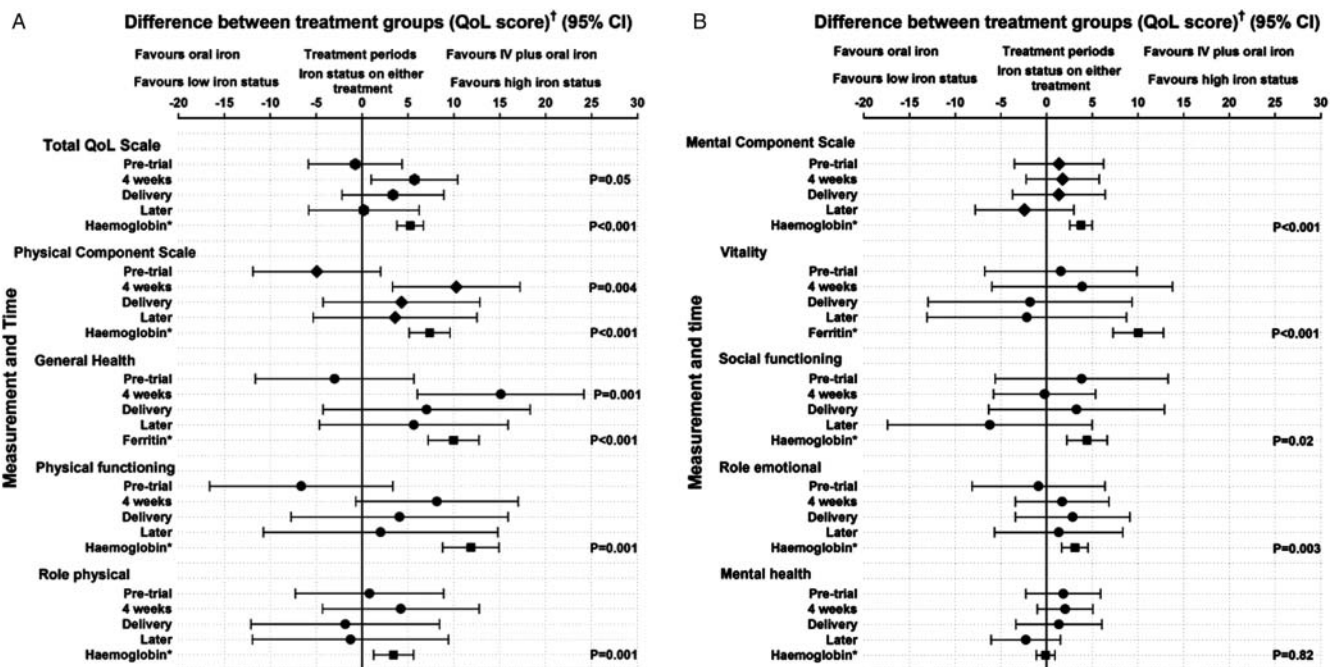
flow). The median age of the patients included in the follow-up study was 29 years at enrolment (range, 21–43) and the median follow-up was 32 months (range, 26–42) postdelivery. There were no significant differences in demographic or iron status measurements between any of the groups of women recruited to the trial. All participants were Caucasians.

As reported in the original study,<sup>14</sup> at delivery the proportion of women with lower than normal ferritin levels was 53 of 67 (79%) for women with analysable iron status measurements who were treated with oral iron as compared to 3 of 66 (4.5%) for women who received intravenous iron (Fisher's exact  $p < 0.001$ ). The pretreatment mean serum ferritin levels were low in both groups at 17  $\mu\text{g/l}$ . However, the serum ferritin of those in the intravenous iron group increased markedly within 4 weeks of the intravenous therapy with a mean level of 222  $\mu\text{g/l}$ ; 95% CI 194 to 249  $\mu\text{g/l}$  ( $p < 0.001$ ). This substantial improvement was maintained after delivery with a mean level of 108  $\mu\text{g/l}$ ; 95% CI 43 to 209  $\mu\text{g/l}$  ( $p < 0.001$ ).<sup>14</sup> On the other hand, ferritin levels did not show a significant increase in the oral iron group through pregnancy and after delivery. Furthermore, the percentage of women at delivery with Hb levels  $< 116 \text{ g/l}$  was 29% (25 of 85) in the oral iron group versus 16% (14 of 87) in the intravenous iron group ( $p = 0.04$ ) incidence rate ratio 0.55 (95% CI 0.31 to 0.98;  $p = 0.043$ ). After delivery, the mean Hb levels declined to

111.6 g/l (SD 14.2) in the oral iron versus 115.5 g/l (SD 10.8) in the intravenous iron group. This showed a continuing favourable effect of intravenous iron therapy (95% CI 2.5 to 9.1;  $p = 0.004$ ) despite the loss of blood at delivery.<sup>14</sup>

There were no significant differences in the birth weights of the babies in the two treatment groups, with an average birth weight of 3.42 kg in both groups with a difference of 0.03 kg ( $p = 0.77$ ). There were also no differences in the gestational age at delivery in both treatment groups with a mean of 39.1 weeks in the oral iron versus 38.9 weeks in the intravenous iron group, with only a slight difference of 0.2 weeks ( $p = 0.74$ ). There were no significant differences in placental cord Hb or ferritin levels in both treatment groups. The mean cord Hb was 165 g/l (SD 9.6) in the oral iron group versus 157 g/l (SD 14.1) in the intravenous iron group (difference  $-7$ ; 95% CI  $-18$  to 3;  $p = 0.17$ ). The ferritin levels were 142  $\mu\text{g/l}$  (SD 86) and 185  $\mu\text{g/l}$  (SD 101), respectively, (difference 43; 95% CI  $-59$  to 145;  $p = 0.41$ ).

The HRQoL Physical Component Scale (difference 10.3; 95% CI 3.3 to 17.2;  $p = 0.27$ ; OR 2.39; 95% CI 1.32 to 4.32;  $p = 0.004$ ) and general health (difference 15.1; 95% CI 6.0 to 24.2;  $p = 0.31$ ; OR 3.14; 95% CI 1.57 to 6.26;  $p = 0.001$ ) responses were improved in the intravenous compared to the oral iron group, but these differences became less apparent at subsequent assessment timepoints (figure 2A,B). Furthermore, there were strong



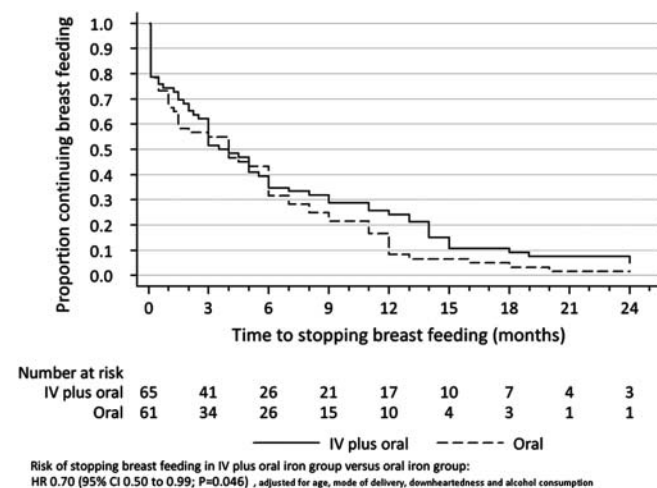
**Figure 2** (A and B) Comparison of physical component scale of health-related quality-of-life (HRQoL) scores in the intravenous plus oral iron versus the oral iron group, and separate association with iron status. †Comparison of the effect of intravenous plus oral iron versus oral iron on physical (A) and mental (B) components of the HRQoL scores at different time periods (before starting iron, 4 weeks after starting iron, at delivery and when the mother responded to questionnaire), estimated using ordinal logistic regression adjusted for significant demographic confounders but not including iron status, corrected for repeated measures and multiple comparisons (Holm method). \*The effect of iron status on physical component and mental component scores was estimated separately without including treatment group in the analysis. The timepoint 'Later' is referring to the postdelivery follow-up assessment.

associations between the level of iron status, independent of how that iron status was achieved, and a number of the HRQoL scales (figure 2): notably improved general health (slope (1 SD log-ferritin) 10.0; 7.2–12.7;  $p<0.001$ ; OR 1.49; 95% CI 1.09 to 2.03;  $p=0.021$ ), improved vitality (slope (1 SD log-ferritin) 10.0; 7.3–12.8;  $p<0.001$ ; OR 2.09; 95% CI 1.66 to 2.62;  $p<0.001$ ), less psychological downheartedness ((1 SD Hb ) OR 1.57; 95% CI 1.14 to 2.15;  $p=0.005$ ), less clinical depression ((1 SD log-ferritin) OR 2.05; 95% CI 1.27 to 3.32;  $p=0.003$ ) and overall improved mental component scale (slope (1 SD Hb ) 3.8; 2.5–5.0;  $p<0.001$ ; OR 1.71; 95% CI 1.39 to 2.10;  $p<0.001$ ) (Psychological Downheartedness and Clinical Depression analysis used raw scores rather than 100-point scales).

There was an increased duration of breastfeeding (HR for cessation was 0.70; 95% CI 0.50 to 0.99;  $p=0.046$ ) in women in the intravenous iron group (figure 3), where higher maternal age was associated with longer breastfeeding (HR 0.76; 95% CI 1.00 to 1.52;  $p=0.006$ , table 3). Earlier cessation of breastfeeding was associated with downheartedness (HR 1.23; 95% CI 1.00 to 1.52;  $p=0.06$ ). There was no difference between the oral iron or intravenous plus oral iron groups in the weight of the baby at birth ( $p=0.64$ ), and no difference in the rate of weight gain ( $p=0.90$ ).

The correlation between the prospective physical symptom questions index from the clinical monitoring questionnaire and the Physical Component Scale of the retrospective HRQoL for the four time periods is shown in table 4. There was a significant association between the physical symptom questions index at 4 weeks after trial entry and each of the HRQoL recall timepoints, and the correlation was strongest for the 4 weeks recall (OR 3.18; 95% CI 2.14 to 4.74;  $p<0.001$ ).

Another finding of our study was an association between male gender babies and an unfavourable mental health component outcome for participant women across the two groups. Of the seven component



**Figure 3** Effect of IV plus oral iron versus oral iron on rate of cessation of breastfeeding.

**Table 3** Effect of intravenous iron versus oral iron on rate of cessation of breast feeding

|                        | HR*  | 95% CI         | p Value |
|------------------------|------|----------------|---------|
| Intravenous plus oral  | 0.70 | (0.50 to 0.99) | 0.046   |
| Maternal age           | 0.76 | (0.63 to 0.92) | 0.006   |
| Downheartedness        | 1.23 | (1.00 to 1.52) | 0.055   |
| Current alcohol intake | 1.34 | (0.88 to 2.03) | 0.18    |
| Mode of delivery:      |      |                |         |
| NVD                    | 1.00 |                |         |
| LSCS                   | 1.24 | (0.84 to 1.82) | 0.29    |
| Forceps                | 1.39 | (0.85 to 2.27) | 0.19    |

\*The likelihood of cessation of breast feeding in the intravenous plus oral iron group was compared with that of the oral iron only group: estimated using Cox proportional hazards regression corrected for repeated-measures and adjusted for the covariates shown, expressed as hazards ratios (95% CIs; p values). Covariates included in the final multivariate model were selected by stepwise regression. The standardised normal transformation of maternal age was used ((mother's age–group mean age)/group SD of age): mean age 28.1±5.6 years. HR less than 1.00 indicates a slower rate of cessation of breastfeeding, while an HR greater than 1.00 indicates a faster rate of ceasing breastfeeding. NVD, normal vaginal delivery; LSCS, lower segment caesarean section.

questions, two showed a significant association, with women who had male babies less likely to be calm and peaceful (OR=0.55, 95% CI 0.32–0.97,  $p=0.039$ ). There were no statistical differences in terms of HRQoL assessment regarding the method of delivery between women who delivered normally and those who had caesarean section.

## DISCUSSION

Prior to our study, there were no data available concerning the effects of either intravenous or oral iron supplementation for anaemia on postdelivery psychological and physical welfare of mothers, the quality of the bonding to the baby and the rate of developmental progress of the baby. We are reporting on 126 patients in a follow-up study of the effect of intravenous iron versus oral iron therapy on HRQoL during and after pregnancy. Our study demonstrates that there was an improvement in the self-assessed feeling of general health in both treatment groups from the prelabour period to all subsequent periods. Although the improvement was significantly greater during pregnancy in the intravenous iron group 4 weeks after commencement of trial treatment ( $p=0.001$ ), the difference persisted in the subsequent measurement periods at a lesser magnitude that did not achieve statistical significance.

Regardless of treatment and regardless of which period was being considered, higher Hb and higher ferritin levels were associated with better baby sleep quality, a longer period of breastfeeding and a higher level of mothers' general health.

The modified HRQoL questionnaire used in our study includes many useful and relevant aspects regarding general health, daily activities, levels of energy and

**Table 4** Correlation between the physical symptom questions\* from the prospective clinical monitoring questionnaire and the Physical Component Scale of the retrospective health-related quality of life (HRQoL) for the four time periods

| Time         | Slope (SD)†  | OR‡  | 95% CI         | p Value | OR§  | 95% CI         | p Value |
|--------------|--------------|------|----------------|---------|------|----------------|---------|
| Pretrial     | 2.67 (13.0)† | 1.46 | (1.01 to 2.11) | 0.043   | 1.00 |                |         |
| 4 weeks      | 8.07 (18.6)  | 3.18 | (2.11 to 4.80) | <0.001  | 2.18 | (1.44 to 3.28) | <0.001  |
| Delivery     | 4.91 (12.2)  | 2.14 | (1.37 to 3.35) | <0.001  | 1.46 | (0.94 to 2.29) | 0.10    |
| Postdelivery | 4.31 (14.1)  | 1.98 | (1.28 to 3.08) | <0.001  | 1.36 | (0.88 to 2.10) | 0.17    |

\*The scores for four questions were combined as a single index: Do you have energy? Do you feel fatigued or sleepy? Do you feel light-headed (dizzy)? Do you feel short of breath? Responses: Not at all; A little of the time; Sometimes; Most of the time; Always.

†The slope (SD) of the association between the physical symptom questions from the clinical monitoring questionnaire and the Physical Component Scale of the HRQoL for the four time periods was estimated by repeated measures general linear modelling for illustrative purposes only (mean index score at pretrial was 74.3 of 100).

‡The strength of the absolute association at each timepoint was compared to the pretrial timepoint and was estimated using repeated measures ordered logistic regression and expressed as OR (95% CIs; p values).

§The strength of the relative association at the other timepoints was compared to the pretrial timepoint and was estimated using repeated measures ordered logistic regression and expressed as OR (95% CIs; p values).

depression. There was a substantial improvement of iron status in women who received intravenous iron compared to oral iron as demonstrated during the trial analysis ( $p < 0.001$ ). Limitations of our study include the modified questionnaire being in part a retrospective HRQoL evaluation that should ideally have been conducted within a shorter period of time. However, a correlation to a prospective evaluation of the studied subjects has been made in our study in order to overcome a possible recall bias. Therefore, we were able to minimise the number of retrospective questions, since the women were asked to recall their responses to each question at four different timepoints. The full SF-36 was impractical and may have been judged to be an excessive burden on the women. Thus, we attempted to provide a retrospective form of validation by showing that the clinical HRQoL questions in the physical domain, recorded prospectively at week 4 after trial, were most strongly associated with the Physical Component Scales of the recall of modified SF-36 at week 4 compared to the other timepoints. This indicates that the retrospective methodology was able to provide an acceptable degree of accuracy in the differentiation of HRQoL levels at different timepoints despite the concerns that may have arisen with this issue. The assumption being made is that the way those patients judge their physical and mental condition will be relatively stable over time,<sup>18</sup> an assumption with which we agree may occur in patients with chronic diseases. However, this assumption may not hold for women during and after pregnancy. The expectations by the woman about how she should be feeling at the different stages of pregnancy, around the time of delivery, and when she is caring for one or more young infant or child may differ substantially at those different timepoints. At least in our analysis, the judgement the woman is making about how to answer the questions is likely to be the same for each timepoint, since she had made that judgement at one point in time: the repeated measures analysis compares each woman with herself, thus substantially reducing the impact of variation between women in this judgement.

Thus, for the purpose of generating a hypothesis concerning iron status and quality of life, we believe that our methodology has been adequate. Another limitation of our study is the relatively small number of women studied. Nevertheless, prior to our study there was a lack of research that addressed HRQoL during and after pregnancy, and particularly the association between iron status and postnatal clinical depression as well as breastfeeding duration in our cohort of patients provides a novel finding and a basis for further research.

An incidental finding of our study was a trend for unfavourable mental health component outcomes for women with male babies. There is only a single report in the literature that addressed this issue and reported similar findings.<sup>19</sup> Perhaps this may be explained with the observation that male babies are usually more active, and this may be associated with postnatal depression.<sup>19</sup> However, due to lack of more detailed data, this issue should be addressed separately and studied in future research.

Owing to paucity of data regarding HRQoL during and after pregnancy, there are only limited data available from other studies. Jansen *et al*<sup>20</sup> studied the effect of delivery and postpartum changes on the HRQoL. A cohort of 141 pregnant women were included in that study. HRQoL questionnaires were measuring the immediate effect of delivery on the quality of life. The HRQoL questionnaires were conducted less than 1 day after vaginal delivery and less than 2 days after delivery by caesarean section and compared to 3–6 weeks postdelivery for both groups.<sup>20</sup> The study focused on patients' HRQoL recovery after both delivery interventions. In that study,<sup>20</sup> the different timepoints of completion of the questionnaire (immediately postdelivery and 3–6 weeks thereafter) may not necessarily reflect the HRQoL during pregnancy and subsequently after the postpartum period. Furthermore, the immediate questionnaire after delivery and at 3–6 weeks time in the postpartum period may have been influenced, at least in theory, by the event of delivery, in particular when complications occurred, as well as by the possible emotional



and hormonal fluctuations during this period. It is worthwhile to note that the same study did not show any association between Hb and QoL; however, it did not investigate a possible effect of iron status on perceived HRQoL in conjunction with breastfeeding. This highlights our novel finding of the correlation between iron status and improved HRQoL during and after pregnancy.

In summary, we found a significant improvement in the general health of women who received intravenous iron ( $p < 0.001$ ), but this effect was found prominently 4 weeks after the intravenous iron treatment. The duration of breast-feeding was longer ( $p = 0.04$ ) in those women who had received intravenous iron. Women with better iron status were less downhearted ( $p = 0.005$ ) and less likely to develop postnatal clinical depression ( $p = 0.003$ ).

Our results indicate that it is worthwhile considering Hb and iron status as a surrogate marker for assessment of women's well-being, not only during pregnancy, but also during the postnatal period.

Further studies are warranted to confirm and extend our findings, and to determine outcomes in different populations with IDA in order to improve the estimates of the magnitude of the benefits of intravenous iron for the management of IDA.

#### Author affiliations

<sup>1</sup>Department of Medicine and Clinical Haematology, Launceston General Hospital, Launceston, Tasmania, Australia

<sup>2</sup>Clinical School of Medicine, University of Tasmania, Launceston, Tasmania, Australia

<sup>3</sup>School of Human Life Sciences, University of Tasmania, Launceston, Tasmania, Australia

<sup>4</sup>Department of Obstetrics and Gynaecology, Launceston General Hospital, Launceston, Tasmania, Australia

**Acknowledgements** This research received a grant from the Clifford Craig Medical Research Trust, Launceston, Tasmania, Australia. The authors thank Professor Matthias Maiwald (KK Women's and Children's Hospital, Singapore) for helpful comments on the manuscript. The authors acknowledge the midwives and the Pharmacy Department at the Launceston General Hospital for their help in conducting the trial.

**Contributors** AAK is the principal investigator of the study who organised and coordinated all aspects of the research including all steps of the manuscript preparation. He is responsible for the study concept, design, recruitment of patients, writing, reviewing, editing and approving the manuscript in its final form as well as all aspects of the research. AD, KO, IR and MB contributed to study design, analysis and interpretation of data, and revised the manuscript. RC, JBB, JS and NB conducted the interviews with patients, collected the data, drafted the article and finally approved the manuscript.

**Funding** Clifford Craig Medical Research Trust is a local community organisation in Tasmania, Australia that supports medical research by

providing monetary funds without interference in the research design or outcome. Clifford Craig Medical Trust Fund has no influence in the study design; subject, methods, data collection, analysis, interpretation of data; writing the research report or the decision to submit the manuscript for publication. The grant was used to support the research assistants.

**Competing interests** None.

**Ethics approval** The trial was approved by the state-wide Tasmanian Human Research Ethics Committee, Tasmania, Australia.

**Provenance and peer review** Not commissioned; externally peer reviewed.

**Data sharing statement** There are no additional data available.

#### REFERENCES

1. Allen L. Multiple micronutrients in pregnancy and lactation: an overview. *Am J Clin Nutr* 2005;81:1206S–12S.
2. Bashiri A, Burstein E, Sheiner E, *et al.* Anemia during pregnancy and treatment with intravenous iron: review of the literature. *Eur J Obstet Gynecol Reprod Biol* 2003;110:2–7.
3. Beard J. Effectiveness and strategies of iron supplementation during pregnancy. *Am J Clin Nutr* 2000;71:1288S–94S.
4. Allen L. Anemia and iron deficiency: effects on pregnancy outcome. *Am J Clin Nutr* 2000;71:1280S–4S.
5. Scholl TO, Reilly T. Anemia, iron and pregnancy outcome. *J Nutr* 2000;130:443S–7S.
6. Rasmussen K. Is there a causal relationship between iron deficiency or iron-deficiency anemia and weight at birth, length of gestation and perinatal mortality? *J Nutr* 2001;13:590S–601S.
7. Scholl TO. Iron status during pregnancy: setting the stage for mother and infant. *Am J Clin Nutr* 2005;81:1218S–22S.
8. Beard J, Hendricks M, Perez E, *et al.* Maternal iron deficiency anemia affects postpartum emotions and cognition. *J Nutr* 2005;135:267–72.
9. Corwin E, Murray-Kolb L, Beard J. Low haemoglobin level is a risk factor for postpartum depression. *J Nutr* 2003;133:4139–42.
10. Makrides M, Crowther CA, Gibson RA, *et al.* Efficacy and tolerability of low-dose iron supplements during pregnancy: a randomized controlled trial. *Am J Clin Nutr* 2003;78:145–53.
11. Allen L. Iron supplements: scientific issues concerning efficacy and implications for research and programs. *J Nutr* 2002;132:813S–19S.
12. Singh K, Fong YF, Kuperan P. A comparison between intravenous iron polymaltose complex (Ferrum Hausmann) and oral ferrous fumarate in the treatment of iron deficiency anaemia in pregnancy. *Eur J Haematol* 1998;60:119–24.
13. Glare J. Clinical update: intravenous iron for anaemia. *Lancet* 2007;369:1502–4.
14. Khalafallah A, Dennis A, Bates J, *et al.* A prospective randomized, controlled trial of intravenous versus oral iron for moderate iron deficiency anaemia of pregnancy. *J Intern Med* 2010;268:286–95; doi: 10.1111/j.1365-2796.2010.02251.x.
15. Reveiz L, Gyte GML, Cuervo LG. Treatments for iron-deficiency anaemia in pregnancy. *Cochrane Database Syst Rev* 2007;(2) CD003094. doi: 10.1002/14651858.CD003094.pub2
16. Hurst NP, Ruta DA, Kind P. Comparison of the MOS short form-12 (SF12) health status questionnaire with the SF36 in patients with rheumatoid arthritis. *Br J Rheumatol* 1998;37:862–9.
17. Ware JE, Kosinski M, Keller SD. A 12-item short-form health survey construction of scales and preliminary tests of reliability and validity. *Med Care* 1996;34:220–33.
18. Tarlov AR, Ware JE Jr, Greenfield S, *et al.* The Medical Outcomes Study. *JAMA* 1989;262:925–30.
19. de Tychey C, Briançon S, Ligezzolo J, *et al.* Quality of life, postnatal depression and baby gender. *J Clin Nurs* 2008;17:312–22.
20. Jansen AJ, Duvekot JJ, Hop WC, *et al.* New insights into fatigue and health-related quality of life after delivery. *Acta Obstet Gynecol Scand* 2007;86:579–84.

**Supplementary Table 1.** The effect of oral iron versus IV plus oral iron on individual modified SF-36 physical scales, and the separate effect of iron status measured during and at the end of pregnancy on those individual modified SF-36 physical scales

|  | Oral iron only<br>Mean <sup>1</sup> ± SD | IV plus oral iron<br>Mean <sup>1</sup> ± SD | Comparison               |                |         |                 |                |         |
|--|--|---|--------------------------|----------------|---------|-----------------|----------------|---------|
|  |  |   | Coefficient <sup>1</sup> | 95% CI         | P-value | OR <sup>2</sup> | 95% CI         | P-value |
| <b>Physical functioning<sup>4</sup> (PF)</b> |  |   |                          |                |         |                 |                |         |
| Pre-trial                                    | 48.7 ± 39.5                              | 42.1 ± 40.1                                 | -6.6                     | (-16.6 to 3.3) | 0.19    | 0.67            | (0.33 to 1.35) | 0.26    |
| 4 weeks                                      | 70.6 ± 33.2                              | 72.1 ± 33.0                                 | 1.5                      | (8.9 to 21.7)  | 0.77    | 1.65            | (0.91 to 2.99) | 0.10    |
| Delivery                                     | 81.0 ± 26.3                              | 78.5 ± 33.2                                 | -2.6                     | (17.2 to 34.2) | >0.90   | 1.31            | (0.57 to 3.02) | 0.53    |
| Later  | 87.7 ± 31.6                              | 83.1 ± 36.5                                 | -4.6                     | (23.1 to 41.6) | 0.36    | 1.16            | (0.43 to 3.12) | 0.77    |
| <b>Haemoglobin<sup>3</sup></b>               |  |   |                          |                |         |                 |                |         |
| QoL during pregnancy                         |  |   | 11.9                     | (8.8 to 14.9)  | <0.001  | 1.97            | (1.58 to 2.46) | <0.001  |
| Predicting post-delivery QoL                 |  |   | 9.8                      | (6.9 to 12.7)  | <0.001  | 1.54            | (1.27 to 1.89) | <0.001  |
| <b>Role physical<sup>4</sup> (RP)</b>        |  |   |                          |                |         |                 |                |         |
| Pre-trial                                    | 50.3 ± 28.4                              | 51.1 ± 25.0                                 | 0.8                      | (-7.3 to 8.9)  | 0.85    | 1.13            | (0.63 to 2.04) | 0.68    |
| 4 weeks                                      | 60.0 ± 18.9                              | 65.0 ± 24.6                                 | 5.0                      | (4.4 to 16.6)  | 0.22    | 1.27            | (0.74 to 2.18) | 0.39    |
| Delivery                                     | 67.0 ± 22.2                              | 66.0 ± 35.6                                 | -1.0                     | (10.2 to 24.9) | 0.80    | 0.94            | (0.42 to 2.11) | 0.89    |
| Later  | 72.7 ± 27.7                              | 72.2 ± 32.5                                 | -0.5                     | (15.6 to 30.9) | >0.90   | 1.04            | (0.40 to 2.67) | >0.90   |
| <b>Haemoglobin<sup>3</sup></b>               |  |   |                          |                |         |                 |                |         |
| QoL during pregnancy                         |  |   | 3.4                      | (1.3 to 5.6)   | 0.002   | 1.58            | (1.26 to 1.97) | <0.001  |
| Predicting post-delivery QoL                 |  |   | 5.0                      | (2.7 to 7.4)   | <0.001  | 1.50            | (1.22 to 1.86) | <0.001  |
| <b>General health<sup>4</sup> (GH)</b>       |  |   |                          |                |         |                 |                |         |
| Pre-trial                                    | 33.4 ± 79.8                              | 30.4 ± 95.2                                 | -3.0                     | (-11.6 to 5.6) | 0.50    | 0.80            | (0.41 to 1.56) | 0.51    |
| 4 weeks                                      | 51.0 ± 104                               | 63.2 ± 67.9                                 | 12.1                     | (8.1 to 21.2)  | 0.031   | 3.14            | (1.57 to 6.26) | 0.001   |
| Delivery                                     | 49.0 ± 81.8                              | 53.1 ± 74.9                                 | 4.0                      | (4.6 to 20.7)  | >0.90   | 1.75            | (0.76 to 4.02) | 0.19    |
| Later  | 52.3 ± 94.2                              | 54.9 ± 95.5                                 | 2.6                      | (8.5 to 23.3)  | >0.90   | 1.80            | (0.74 to 4.40) | 0.20    |
| <b>Ferritin<sup>3</sup></b>                  |  |   |                          |                |         |                 |                |         |
| QoL during pregnancy                         |  |   | 10.0                     | (7.2 to 12.7)  | <0.001  | 1.80            | (1.47 to 2.20) | <0.001  |

|                              |     |               |       |      |                |       |
|------------------------------|-----|---------------|-------|------|----------------|-------|
| Predicting post-delivery QoL | 7.1 | (2.8 to 11.3) | 0.001 | 1.59 | (1.19 to 2.14) | 0.002 |
|------------------------------|-----|---------------|-------|------|----------------|-------|

- <sup>1</sup> Mean (standard deviation) QoL scores in the two study groups at four different time periods and difference (coefficient; 95% confidence intervals; P-values) between study groups at those time points were estimated by generalized estimating equations adjusted for mode of delivery and duration of breast feeding (log.-transformed) and corrected for multiple comparisons by the Holm method.
- <sup>2</sup> Comparison of QoL scores in the two study groups at four different time periods with rank-order assumptions were estimated using repeated-measures ordered logistic regression adjusted and corrected as above<sup>1</sup>, expressed as odds ratio (OR; 95% confidence intervals; P-values).
- <sup>3</sup> The association between iron status and QoL scores were examined separately using: 1) the QoL values during the pregnancy recalled at the time of interview, and the iron status measurements made at each time point during pregnancy; 2) the QoL values during the pregnancy recalled at the time of interview, and the iron status measurements made at each time point during pregnancy, including the association of QoL at time of interview (“Later”) and the iron status at delivery. The coefficients shown were the effect of a rise of 1 standard deviation of haemoglobin (mean 118 g/L SD 10.9) or ferritin (log.<sub>10</sub>-transformed mean 1.54 SD 0.56) on the QoL score being examined.
- <sup>4</sup> The multivariate effect size estimates were adjusted for covariates selected by stepwise regression from maternal age (z-score), haemoglobin (z-score), ferritin (z-score), Socio-Economic Indexes for Areas (SEIFA; based on the Collector District of residence of mothers) (z-score), quality of sleep, use and duration of breast-feeding (z-score of log.-transformation), hospitalization of baby, baby gender and mode of delivery (including intervention group interactions): 1) PF covariates were mode of delivery and duration of breast feeding (log.-transformed); 2) RP covariates were mode of delivery only; 3) GH covariates were SEIFA, quality of sleep, use only of breast-feeding, hospitalization of baby and mode of delivery. Z-scores were the standardized normal transformation of the continuous values ( $\frac{\text{subject value} - \text{mean}}{\text{SD}}$ ).

**Supplementary Table 2.** The effect of oral iron versus IV plus oral iron on individual modified SF-36 mental scales, and the separate effect of iron status measured during and at the end of pregnancy on those individual modified SF-36 mental scales

|                                      | Oral iron only<br>Mean <sup>1</sup> ± SD | IV plus oral iron<br>Mean <sup>1</sup> ± SD | Comparison               |                |         |                 |                |         |
|--------------------------------------|--|---|--------------------------|----------------|---------|-----------------|----------------|---------|
|                                      |  |   | Coefficient <sup>1</sup> | 95%CI          | P-value | OR <sup>2</sup> | 95% CI         | P-value |
| Vitality <sup>4</sup> (VT)           |  |   |                          |                |         |                 |                |         |
| Pre-trial                            | 31.4 ± 79.5                              | 33.0 ± 62.1                                 | 1.6                      | (-6.8 to 9.9)  | 0.71    | 1.18            | (0.62 to 2.26) | 0.62    |
| 4 weeks                              | 54.6 ± 71.0                              | 60.0 ± 63.2                                 | 5.5                      | (17.7 to 31.8) | 0.60    | 1.27            | (0.61 to 2.66) | 0.52    |
| Delivery                             | 58.7 ± 59.6                              | 58.5 ± 75.2                                 | -0.3                     | (21.0 to 36.8) | >0.90   | 0.89            | (0.39 to 2.08) | 0.80    |
| Later                                | 61.9 ± 72.5                              | 61.3 ± 88.3                                 | -0.6                     | (24.3 to 39.8) | 0.89    | 0.88            | (0.33 to 2.33) | 0.79    |
| Ferritin <sup>3</sup>                |  |   |                          |                |         |                 |                |         |
| QoL during pregnancy                 |  |   | 10.0                     | (7.3 to 12.8)  | <0.001  | 2.09            | (1.66 to 2.62) | <0.001  |
| Predicting post-delivery QoL         |  |   | 3.3                      | (-0.7 to 7.3)  | 0.11    | 1.39            | (0.98 to 1.98) | 0.06    |
| Social functioning <sup>4</sup> (SF) |  |   |                          |                |         |                 |                |         |
| Pre-trial                            | 57.2 ± 119                               | 61.0 ± 70.3                                 | 3.8                      | (-5.6 to 13.3) | 0.43    | 1.12            | (0.53 to 2.39) | 0.76    |
| 4 weeks                              | 67.1 ± 96.1                              | 70.7 ± 63.3                                 | 3.6                      | (9.7 to 17.7)  | 0.91    | 1.10            | (0.69 to 1.76) | 0.69    |
| Delivery                             | 62.7 ± 90.4                              | 69.8 ± 63.7                                 | 7.1                      | (2.5 to 16.2)  | 0.29    | 1.29            | (0.62 to 2.67) | 0.49    |
| Later                                | 73.5 ± 94.2                              | 71.1 ± 66.3                                 | -2.4                     | (12.1 to 28.2) | 0.62    | 0.65            | (0.26 to 1.63) | 0.36    |
| Haemoglobin <sup>3</sup>             |  |   |                          |                |         |                 |                |         |
| QoL during pregnancy                 |  |   | 4.4                      | (2.2 to 6.6)   | <0.001  | 1.26            | (1.04 to 1.54) | 0.020   |
| Predicting post-delivery QoL         |  |   | 3.5                      | (1.8 to 5.1)   | <0.001  | 1.21            | (0.96 to 1.53) | 0.11    |
| Role emotional <sup>4</sup> (RE)     |  |   |                          |                |         |                 |                |         |
| Pre-trial                            | 64.1 ± 61.5                              | 63.2 ± 63.6                                 | -0.9                     | (-8.2 to 6.4)  | 0.81    | 0.96            | (0.50 to 1.83) | 0.90    |
| 4 weeks                              | 69.4 ± 60.8                              | 70.2 ± 63.7                                 | 0.8                      | (0.8 to 8.1)   | >0.90   | 1.19            | (0.82 to 1.71) | 0.36    |
| Delivery                             | 67.4 ± 76.2                              | 69.4 ± 50.2                                 | 2.0                      | (-2.0 to 6.9)  | 0.60    | 1.23            | (0.70 to 2.18) | 0.47    |
| Later                                | 74.0 ± 54.3                              | 74.5 ± 70.8                                 | 0.4                      | (4.0 to 14.1)  | >0.90   | 1.46            | (0.68 to 3.12) | 0.33    |
| Haemoglobin <sup>3</sup>             |  |   |                          |                |         |                 |                |         |
| QoL during pregnancy                 |  |   | 3.1                      | (1.7 to 4.5)   | <0.001  | 1.31            | (1.09 to 1.56) | 0.003   |

| Predicting post-delivery QoL    |             |             | 2.8  | (1.3 to 4.3)  | <0.001 | 1.33 | (1.08 to 1.64) | 0.007 |
|---------------------------------|-------------|-------------|------|---------------|--------|------|----------------|-------|
| Mental health <sup>4</sup> (MH) |             |             |      |               |        |      |                |       |
| Pre-trial                       | 56.9 ± 12.5 | 58.8 ± 12.4 | 1.8  | (-2.3 to 5.9) | >0.90  | 1.44 | (0.72 to 2.90) | >0.90 |
| 4 weeks                         | 54.3 ± 12.0 | 58.1 ± 12.1 | 3.9  | (-3.0 to 1.4) | 0.32   | 1.31 | (0.83 to 2.07) | 0.25  |
| Delivery                        | 54.7 ± 15.0 | 57.9 ± 14.1 | 3.2  | (-3.7 to 3.0) | 0.53   | 1.09 | (0.47 to 2.51) | 0.84  |
| Later                           | 55.8 ± 14.8 | 55.3 ± 12.6 | -0.4 | (-2.0 to 3.4) | 0.83   | 0.65 | (0.32 to 1.30) | 0.22  |
| Haemoglobin <sup>3</sup>        |             |             |      |               |        |      |                |       |
| QoL during pregnancy            |             |             | -0.1 | (-1.1 to 0.9) | 0.84   | 1.02 | (0.84 to 1.25) | 0.82  |
| Predicting post-delivery QoL    |             |             | -0.6 | (-1.5 to 0.2) | 0.14   | 0.98 | (0.79 to 1.22) | 0.86  |

<sup>1</sup> Mean (standard deviation) QoL scores in the two study groups at four different time periods and difference (coefficient; 95% confidence intervals; P-values) between study groups at those time points were estimated by generalized estimating equations adjusted for mode of delivery and duration of breast feeding (log.-transformed) and corrected for multiple comparisons by the Holm method.

<sup>2</sup> Comparison of QoL scores in the two study groups at four different time periods with rank-order assumptions were estimated using repeated-measures ordered logistic regression adjusted and corrected as above<sup>1</sup>, expressed as odds ratio (OR; 95% confidence intervals; P-values).

<sup>3</sup> The association between iron status and QoL scores were examined separately using: 1) the QoL values during the pregnancy recalled at the time of interview, and the iron status measurements made at each time point during pregnancy; 2) the QoL values during the pregnancy recalled at the time of interview, and the iron status measurements made at each time point during pregnancy, including the association of QoL at time of interview (“Later”) and the iron status at delivery.

<sup>4</sup> The multivariate effect size estimates were adjusted for covariates selected by stepwise regression from maternal age (z-score), haemoglobin (z-score), ferritin (z-score), Socio-Economic Indexes for Areas (SEIFA; based on the Collector District of residence of mothers) (z-score), quality of sleep, use and duration of breast-feeding (z-score of log.-transformation), hospitalization of baby, baby gender and mode of delivery (including intervention group interactions with each of these covariates): 1) VT covariates were mode of delivery and quality of sleep; 2) SF covariates were mode of delivery, quality of sleep and male baby; 3) GH covariates were age of mother, quality of sleep, hospitalization of baby, male baby and mode of delivery; 4) MH covariates were mode of delivery only. Z-scores were the standardized normal transformation of the continuous values ( $\{\text{subject value minus mean}\}/\text{SD}$ ).

**Supplementary Table 3.** The effect of oral iron versus IV plus oral iron on the aggregate modified SF-36 scales, and the separate effect of iron status measured during and at the end of pregnancy on those aggregate modified SF-36 scales.

|  | Oral iron only<br>Mean <sup>1</sup> ± SD | IV plus oral iron<br>Mean <sup>1</sup> ± SD | Comparison               |                |         |                 |                |         |
|--|--|---|--------------------------|----------------|---------|-----------------|----------------|---------|
|  |  |   | Coefficient <sup>1</sup> | 95%CI          | P-value | OR <sup>2</sup> | 95% CI         | P-value |
| <b>Physical Components Score<sup>4</sup> (PCS)</b> |  |   |                          |                |         |                 |                |         |
| Pre-trial  | 43.8 ± 31.2                              | 38.9 ± 54.5                                 | -4.9                     | (-11.9 to 2.0) | 0.17    | 0.64            | (0.34 to 1.21) | 0.17    |
| 4 weeks  | 59.6 ± 47.5                              | 65.0 ± 46.9                                 | 5.3                      | (5.9 to 15.9)  | 0.27    | 2.39            | (1.32 to 4.32) | 0.004   |
| Delivery   | 64.6 ± 56.5                              | 63.9 ± 35.5                                 | -0.6                     | (9.7 to 21.9)  | >0.90   | 1.60            | (0.75 to 3.40) | 0.22    |
| Later  | 69.6 ± 50.6                              | 68.2 ± 54.0                                 | -1.3                     | (14.4 to 27.2) | 0.71    | 1.51            | (0.62 to 3.67) | 0.36    |
| <b>Haemoglobin<sup>3</sup></b>                     |  |   |                          |                |         |                 |                |         |
| QoL during pregnancy                               |  |   | 7.3                      | (5.1 to 9.6)   | <0.001  | 1.99            | (1.63 to 2.44) | <0.001  |
| Predicting post-delivery QoL                       |  |   | 8.2                      | (6.0 to 10.5)  | <0.001  | 1.75            | (1.46 to 2.10) | <0.001  |
| <b>Mental Components Score<sup>4</sup> (PCS)</b>   |  |   |                          |                |         |                 |                |         |
| Pre-trial  | 52.6 ± 51.0                              | 54.0 ± 36.7                                 | 1.4                      | (-3.5 to 6.2)  | 0.58    | 1.11            | (0.62 to 2.00) | 0.72    |
| 4 weeks  | 61.7 ± 51.3                              | 64.8 ± 37.8                                 | 3.1                      | (7.5 to 13.2)  | 0.63    | 1.24            | (0.77 to 2.01) | 0.38    |
| Delivery   | 61.2 ± 44.7                              | 64.0 ± 33.2                                 | 2.7                      | (6.4 to 13.6)  | 0.56    | 1.12            | (0.58 to 2.19) | 0.73    |
| Later  | 66.6 ± 47.5                              | 65.6 ± 44.9                                 | -1.0                     | (11.5 to 19.2) | 0.67    | 0.81            | (0.34 to 1.90) | 0.63    |
| <b>Haemoglobin<sup>3</sup></b>                     |  |   |                          |                |         |                 |                |         |
| QoL during pregnancy                               |  |   | 3.8                      | (2.5 to 5.0)   | <0.001  | 1.71            | (1.39 to 2.10) | <0.001  |
| Predicting post-delivery QoL                       |  |   | 4.1                      | (2.8 to 5.3)   | <0.001  | 1.54            | (1.24 to 1.92) | <0.001  |
| <b>Modified SF-36<sup>4</sup></b>                  |  |   |                          |                |         |                 |                |         |
| Pre-trial  | 48.5 ± 49.2                              | 47.7 ± 33.2                                 | -0.7                     | (-5.8 to 4.4)  | 0.77    | 0.99            | (0.52 to 1.86) | >0.90   |
| 4 weeks  | 60.4 ± 44.2                              | 65.3 ± 36.8                                 | 5.0                      | (7.8 to 14.5)  | 0.17    | 1.72            | (1.00 to 2.95) | 0.05    |
| Delivery   | 62.2 ± 38.3                              | 64.8 ± 44.5                                 | 2.6                      | (9.1 to 17.0)  | 0.32    | 1.34            | (0.67 to 2.69) | 0.41    |
| Later  | 67.8 ± 43.0                              | 67.2 ± 48.3                                 | -0.6                     | (14.3 to 22.8) | 0.83    | 0.98            | (0.40 to 2.39) | >0.90   |

---

Haemoglobin<sup>3</sup>

|                              |     |              |        |      |                |        |
|------------------------------|-----|--------------|--------|------|----------------|--------|
| QoL during pregnancy         | 5.2 | (3.8 to 6.7) | <0.001 | 2.09 | (1.72 to 2.55) | <0.001 |
| Predicting post-delivery QoL | 5.9 | (4.4 to 7.5) | <0.001 | 1.81 | (1.46 to 2.25) | <0.001 |

- <sup>1</sup> Mean (standard deviation) QoL scores in the two study groups at four different time periods and difference (coefficient; 95% confidence intervals; P-values) between study groups at those time points were estimated by generalized estimating equations adjusted for mode of delivery and duration of breast feeding (log.-transformed) and corrected for multiple comparisons by the Holm method.
- <sup>2</sup> Comparison of QoL scores in the two study groups at four different time periods with rank-order assumptions were estimated using repeated-measures ordered logistic regression adjusted and corrected as above<sup>1</sup>, expressed as odds ratio (OR; 95% confidence intervals; P-values).
- <sup>3</sup> The association between iron status and QoL scores were examined separately using: 1) the QoL values during the pregnancy recalled at the time of interview, and the iron status measurements made at each time point during pregnancy; 2) the QoL values during the pregnancy recalled at the time of interview, and the iron status measurements made at each time point during pregnancy, including the association of QoL at time of interview (“Later”) and the iron status at delivery.
- <sup>4</sup> The multivariate effect size estimates were adjusted for covariates selected by stepwise regression from maternal age (z-score), haemoglobin (z-score), ferritin (z-score), Socio-Economic Indexes for Areas (SEIFA; based on the Collector District of residence of mothers) (z-score), quality of sleep, use and duration of breast-feeding (z-score of log.-transformation), hospitalization of baby, baby gender and mode of delivery (including intervention group interactions with each of these covariates): 1) PCS covariates were use of breast feeding only; 2) MCS covariates were quality of sleep, male baby and mode of delivery; 3) modified SF-36 covariates were quality of sleep and mode of delivery. Z-scores were the standardized normal transformation of the continuous values ( $\{\text{subject value minus mean}\}/\text{SD}$ ).