

Supplementary file 4: Estimated vs. real survival for all patients

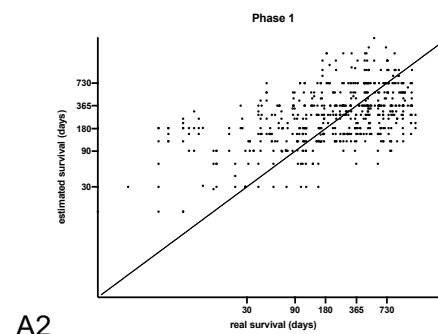
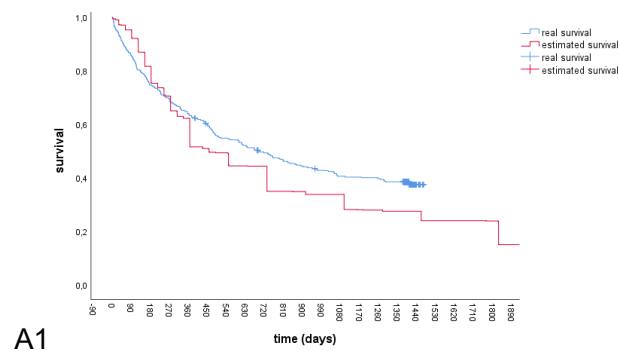
A1, B1, C1:

Kaplan-Meier curve of OS; blue: real OS, red: estimated OS

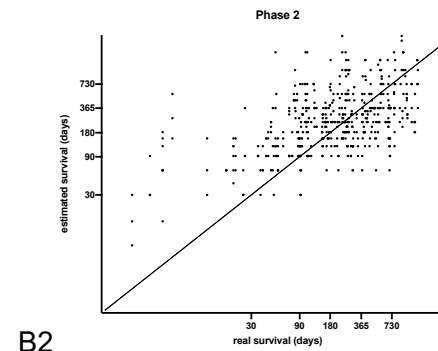
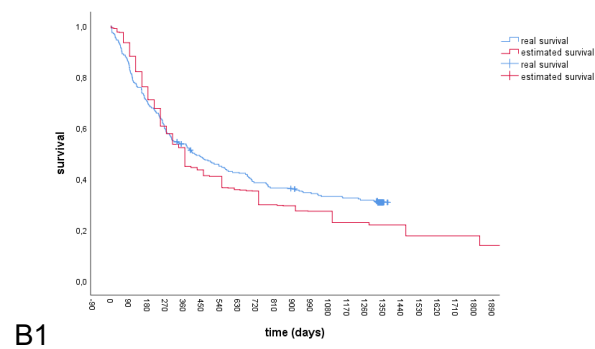
A2, B2, C2:

Real survival (x-axis) versus estimated survival (y-axis) – the diagonal line represents perfect prediction. Patients above diagonal = overestimation; patients below line = underestimation (Christakis et al 2000)

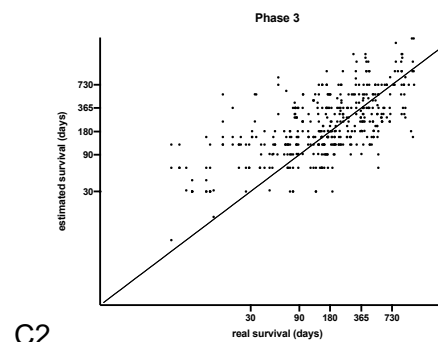
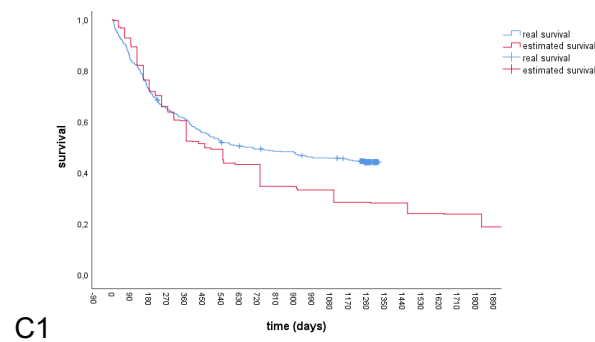
A: phase 1 (patients n = 319, estimates n = 939)



B: phase 2 (patients n = 155, estimates n = 746)



C: phase 3 (patients n = 262, estimates n = 801)



D:

x-axis: real survival in months; y-axis: percentage of overestimates (dark blue; estimated survival/real survival >1) and underestimates (light blue; estimated survival/real survival <1)

