

BMJ Open Association of the Controlling Nutritional Status (CONUT) score with all-cause and cause-specific mortality in patients with diabetic kidney disease: evidence from the NHANES 2009–2018

Huifeng Zhang ¹, Na Liu,¹ Huaixin Dang²

To cite: Zhang H, Liu N, Dang H. Association of the Controlling Nutritional Status (CONUT) score with all-cause and cause-specific mortality in patients with diabetic kidney disease: evidence from the NHANES 2009–2018. *BMJ Open* 2024;**14**:e079992. doi:10.1136/bmjopen-2023-079992

► Prepublication history and additional supplemental material for this paper are available online. To view these files, please visit the journal online (<https://doi.org/10.1136/bmjopen-2023-079992>).

HZ and HD are joint senior authors.

Received 18 September 2023
Accepted 16 February 2024



© Author(s) (or their employer(s)) 2024. Re-use permitted under CC BY-NC. No commercial re-use. See rights and permissions. Published by BMJ.

¹Department of Nephrology, Shanxi Bethune Hospital, Shanxi Academy of Medical Sciences, Third Hospital of Shanxi Medical University, Tongji Shanxi Hospital, Taiyuan 030032, Shanxi, P.R.China

²Drug Farm Inc Building D7, Jiashan 100032, Zhejiang, P.R.China

Correspondence to

Dr Huaixin Dang;
huaixind@163.com and
Dr Huifeng Zhang;
hfzhang_Bethune@outlook.com

ABSTRACT

Objective To investigate the association between the Controlling Nutritional Status (CONUT) score and all-cause and cause-specific mortality in patients with diabetic kidney disease (DKD).

Design A retrospective cohort study.

Setting and participants Data on patients with DKD from the National Health and Nutrition Examination Survey 2009–2018.

Primary and secondary outcome measures All-cause mortality, cardiovascular disease (CVD)-related mortality, diabetes-related mortality and nephropathy-related mortality.

Results A total of 1714 patients were included, with 1119 (65.29%) in normal nutrition group (a score of 0–1), 553 (32.26%) in mild malnutrition group (a score of 2–4) and 42 (2.45%) in moderate and severe malnutrition group (a score of 5–12), according to the CONUT score. After controlling for age, race, marital status, smoking, hypertension, CVD, diabetic retinopathy, poverty income ratio, antidiabetics, diuretics, urinary albumin to creatinine ratio, uric acid, energy, protein, total fat, sodium and estimated glomerular filtration rate, a higher CONUT score was associated with a significantly greater risk of all-cause death (HR 1.30, 95% CI 1.15 to 1.46, $p<0.001$). In contrast to patients with a CONUT score of 0–1, those who scored 5–12 had significantly increased risks of all-cause death (HR 2.80, 95% CI 1.42 to 5.51, $p=0.003$), diabetes-related death (HR 1.78, 95% CI 1.02 to 3.11, $p=0.041$) and nephropathy-related death (HR 1.84, 95% CI 1.04 to 3.24, $p=0.036$).

Conclusion Moderate and severe malnutrition was associated with greater risks of all-cause death, diabetes-related death and nephropathy-related death than normal nutritional status in DKD. Close monitoring of immunonutritional status in patients with DKD may help prognosis management and improvement.

INTRODUCTION

Diabetes mellitus is a common metabolic disease, affecting about 537 million people worldwide,¹ and type 2 diabetes mellitus (T2DM) accounts for more than 90% of diabetic cases, which can lead to microvascular

STRENGTHS AND LIMITATIONS OF THIS STUDY

- ⇒ A nationally representative sample was employed to probe into the association between the Controlling Nutritional Status (CONUT) score and the risk of all-cause and cause-specific mortality in patients with diabetic kidney disease (DKD).
- ⇒ The association between the CONUT score and the risk of mortality was further assessed in different sex, cardiovascular disease and diabetic retinopathy subpopulations.
- ⇒ The diagnosis of DKD was based on a single measurement of estimated glomerular filtration rate and urinary albumin to creatinine ratio, rather than continuous observation for 3 months.
- ⇒ Some possible confounding factors, such as treatment during follow-up, have not been adjusted for in this analysis.
- ⇒ This research was conducted using the data from the American population, which may affect the applicability of the findings to other populations.

and macrovascular complications.² Diabetic kidney disease (DKD) is a main microvascular complication of diabetes,³ which occurs in 30%–40% of patients with diabetes. DKD is the major cause of end-stage renal disease and is associated with a high risk of death, resulting in a serious disease burden.^{4,5} Thus, investigating effective prognostic markers has important clinical significance for stratified risk management and mortality reduction in DKD.

Recent evidence suggests that DKD is a metabolic-driven immunological disease, with pathological mechanisms involving multiple aspects such as metabolism and inflammation.⁶ The Controlling Nutritional Status (CONUT) score is a commonly used immuno-nutritional marker that reflects chronic inflammation, immune status and nutritional status in individuals, evaluated

jointly by total cholesterol (TC), serum albumin and lymphocyte count.^{7 8} Mineoka *et al*⁹ reported that a high CONUT score was associated with a greater risk of diabetic foot. In addition, an association was found between malnutrition assessed by the CONUT score and an elevated risk of all-cause mortality among diabetic patients.¹⁰ According to a previous study, the CONUT score was significantly correlated with the risk of all-cause death in individuals with chronic kidney disease (CKD) who initiated dialysis.¹¹ Nevertheless, the relationship between the CONUT score and the risk of mortality in patients with DKD is still unknown.

The objective of this study was to probe into the association between the CONUT score and all-cause and cause-specific mortality among patients with DKD, based on the data from the National Health and Nutrition Examination Survey (NHANES) 2009–2018. Subgroup analysis was conducted in terms of sex, cardiovascular disease (CVD) and diabetic retinopathy (DR) to assess whether the association varied among different subpopulations.

METHODS

Patient and public involvement

No patients were involved.

Study population

This retrospective cohort study extracted data on patients with DKD from five cycles (2009–2010, 2011–2012, 2013–2014, 2015–2016 and 2017–2018) of the NHANES. The NHANES is a series of studies designed to evaluate the health and nutritional status of the nationally representative, non-institutionalised population in the USA. The survey combines interviews and physical examinations and is approved by the National Center for Health Statistics Research.¹² The study involved individuals (1) aged ≥ 18 years, (2) diagnosed with DKD, (3) with the assessment of serum albumin, TC and total lymphocyte count and (4) with complete survival data. Individuals without data on (1) follow-up time or (2) the cause of death were excluded. Patients were followed up from the data of survey participation to 31 December 2019.

Assessment of DKD

Diabetes was defined as a self-reported diabetes diagnosis, use of diabetes medication or insulin, haemoglobin A1c $\geq 6.5\%$, or a fasting glucose level ≥ 7.0 mmol/L. CKD was defined as urinary albumin to creatinine ratio (UACR) >30 mg/g and/or estimated glomerular filtration rate (eGFR) <60 mL/min/1.73 m² according to the 'KDIGO 2021 Guidelines'.¹³ The CKD_EPI_Scr equation was applied to calculate eGFR.^{13 14} DKD was defined as CKD combined with diabetes.^{15 16}

Calculation of the CONUT score

The CONUT score was calculated with the data on serum albumin, TC and total lymphocyte count (obtained from

a blood examination), ranging from 0 to 12.⁷ A total score of 0–1 was regarded as normal nutrition, and a score of 2–4, 5–8 and 9–12 in total was defined as mild, moderate and severe malnutrition, respectively.

Assessment of mortality

Mortality evaluated in this study included all-cause mortality, CVD-related mortality, diabetes-related mortality and nephropathy-related mortality. All-cause and cause-specific mortality was determined via linkage to the National Death Index until 31 December 2019. The 10th revision of the International Classification of Disease was used to determine the cause of death. All-cause mortality was defined as death from any cause. CVD-related mortality was defined as death from diseases of heart (I00–I09, I11, I13, I20–I51) and cerebrovascular diseases (I60–I69). Diabetes-related mortality was defined as death from diabetes mellitus (E10–E14). Nephropathy-related mortality was defined as death from nephritis, nephrotic syndrome and nephrosis (N00–N07, N17–N19, N25–N27).

Other variables

We collected information on age (years), gender, race (Mexican American, other Hispanic, non-Hispanic white, non-Hispanic black and other race), body mass index (BMI, kg/m²), education level (less than 9th grade, 9th–11th grade, high school graduate/general education development or equivalent, some college or college or associate (AA) degree, college graduate or above), marital status (married, widowed, divorced, separated, never married, living with partner), smoking, alcohol drinking, hypertension, hyperlipidaemia, CVD, DR, poverty income ratio (PIR; <1 , ≥ 1 , unknown), physical activity (MET \times min/week), fasting glucose (mmol/L), antidiabetics (no, only hypoglycaemic drugs, hypoglycaemic drugs and insulin), diuretics, ACE inhibitor (ACEI), UACR, uric acid (μ mol/L), energy (kcal), protein (g), carbohydrate (g), total fat (g), sodium (mg), potassium (mg), eGFR (mL/min/1.73 m²) and follow-up time (months). The presence of hypertension and dyslipidaemia was determined according to laboratory examination, self-reported medical history and medication history. Hypertension refers to systolic blood pressure ≥ 140 mm Hg, or diastolic blood pressure ≥ 90 mm Hg, or self-reported hypertension, or use of antihypertensive drugs. Dyslipidaemia refers to TC ≥ 200 mg/dL (5.2 mmol/L), or triglyceride ≥ 150 mg/dL (1.7 mmol/L), or low-density lipoprotein cholesterol ≥ 130 mg/dL (3.4 mmol/L), or high-density lipoprotein cholesterol ≤ 40 mg/dL (1.0 mmol/L), or self-reported hypercholesterolaemia, or receiving lipid-lowering treatment. DR was defined by the question, 'has a doctor ever told {you/SP} that diabetes has affected {your/his/her} eyes or that {you/s/he} had retinopathy (ret-in-op-ath-ee)?' Physical activity was converted into energy consumption. Energy

consumption (MET×min)=recommended metabolic equivalent (MET)×exercise time of the corresponding activity (min).

Statistical analysis

Continuous data were illustrated as mean (SE), and the weighted t-test was used for intergroup comparisons; categorical data were reported as the number of cases and the constituent ratio (n (%)), and comparisons between groups were conducted using the χ^2 test. Continuous data were standardised. Missing data were filled with multiple imputation and sensitivity analysis was performed for data before and after the imputation (online supplemental table 1).

The included patients were divided into three groups according to the CONUT score: normal nutrition group (a score of 0–1), mild malnutrition group (a score of 2–4), and moderate and severe malnutrition group (a score of 5–12). Univariate weighted Cox regression was employed to screen covariates and examine the association between the CONUT score and mortality. Multivariate weighted Cox regression was used to further explore the association between the CONUT score and mortality, with adjustment for age, race, marital status, smoking, hypertension, CVD, DR, PIR, antidiabetics, diuretics, UACR, uric acid, energy, protein, total fat, sodium and eGFR. Subgroup analysis was carried out based on sex, CVD and DR to assess whether the association between the CONUT score and mortality was different in subpopulations, and the controlled covariates were selected through new univariate weighted Cox regression models. HRs and 95% CIs were calculated.

Data extraction and cleaning were completed by SAS V.9.4 (SAS Institute). R V.4.2.0 (R Foundation for Statistical Computing, Vienna, Austria) was adopted for statistical analysis. A difference was regarded as significantly different when a $p < 0.05$.

RESULTS

Characteristics of the study population

From the NHANES 2009–2018, 1723 patients with DKD were enrolled. After excluding patients less than 18 years ($n=3$), and without information on the CONUT score ($n=3$) and follow-up time ($n=3$), a total of 1714 patients were eligible for this study. **Figure 1** demonstrates the selection process of eligible patients. According to the CONUT score, the number of patients in normal nutrition group, mild malnutrition group, and moderate and severe malnutrition group was 1119 (65.29%), 553 (32.26%) and 42 (2.45%), respectively. The mean age of these patients was 64.08 years. Most of the patients were non-Hispanic white people (59.62%) and were married (54.30%). The average follow-up time was 58.23 months. The characteristics of the included patients with DKD are presented in **table 1**. Significant differences were found among the three groups in age, gender, race, BMI, marital status, hypertension, CVD, PIR, physical activity, antidiabetics, diuretics, UACR, energy, protein, carbohydrate, total fat, eGFR, follow-up time and vital status (all $p < 0.05$).

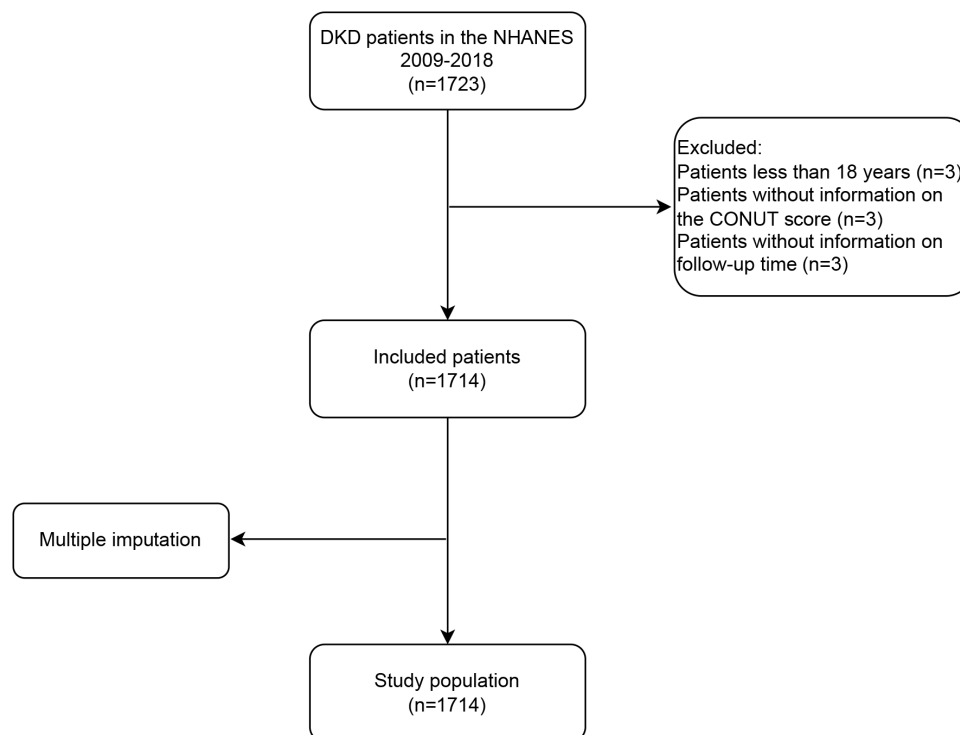


Figure 1 Flow chart of participant selection. CONUT, Controlling Nutritional Status; DKD, diabetic kidney disease; NHANES, National Health and Nutrition Examination Survey.

Table 1 Characteristics of the included patients with DKD

Variables	Total (n=1714)	Normal nutrition group (n=1119)	Mild malnutrition group (n=553)	Moderate and severe malnutrition group (n=42)	P value
Age, years, mean (SE)	64.08 (0.47)	61.69 (0.60)	68.92 (0.67)	67.02 (2.14)	<0.001
Gender, n (%)					<0.001
Male	952 (53.86)	549 (47.78)	371 (65.17)	32 (75.56)	
Female	762 (46.14)	570 (52.22)	182 (34.83)	10 (24.44)	
Race, n (%)					<0.001
Mexican American	298 (10.61)	213 (12.27)	81 (7.48)	4 (5.04)	
Other Hispanic	172 (5.75)	130 (6.81)	38 (3.60)	4 (4.42)	
Non-Hispanic white	623 (59.62)	367 (56.41)	238 (66.17)	18 (63.00)	
Non-Hispanic black	416 (14.36)	281 (15.10)	124 (12.91)	11 (12.65)	
Other race—including multiracial	205 (9.67)	128 (9.41)	72 (9.83)	5 (14.90)	
BMI, kg/cm ² , Mean (SE)	33.04 (0.29)	33.60 (0.38)	31.97 (0.38)	31.60 (1.90)	0.020
Education level, n (%)					0.161
Less than ninth grade	322 (11.95)	218 (12.41)	98 (11.18)	6 (9.24)	
9th–11th grade	284 (13.60)	181 (13.62)	92 (12.61)	11 (26.51)	
High school graduate/GED or equivalent	394 (26.08)	260 (25.40)	126 (27.62)	8 (24.46)	
Some college or AA degree	468 (30.82)	304 (32.14)	150 (27.70)	14 (35.09)	
College graduate or above	246 (17.55)	156 (16.43)	87 (20.89)	3 (4.70)	
Marital status, n (%)					0.045
Married	883 (54.30)	554 (52.79)	305 (57.17)	24 (58.54)	
Widowed	322 (16.73)	208 (15.31)	109 (20.24)	5 (10.12)	
Divorced	229 (12.81)	164 (14.21)	62 (10.08)	3 (9.41)	
Separated	70 (3.22)	51 (3.90)	18 (1.90)	1 (1.71)	
Never married	151 (8.19)	101 (8.44)	42 (6.85)	8 (19.11)	
Living with partner	59 (4.76)	41 (5.36)	17 (3.76)	1 (1.11)	
Smoking, n (%)					0.936
Yes	881 (53.20)	547 (52.88)	306 (53.69)	28 (56.03)	
No	833 (46.80)	572 (47.12)	247 (46.31)	14 (43.97)	
Alcohol drinking, n (%)					0.333
Yes	1540 (91.29)	1004 (90.90)	503 (92.60)	33 (84.63)	
No	38 (2.55)	26 (2.95)	11 (1.70)	1 (2.31)	
Unknown	136 (6.16)	89 (6.15)	39 (5.69)	8 (13.06)	
Hypertension, n (%)					0.020
No	119 (6.59)	93 (8.02)	24 (3.78)	2 (3.82)	
Yes	1595 (93.41)	1026 (91.98)	529 (96.22)	40 (96.18)	
Hyperlipidaemia, n (%)					0.497
No	170 (9.74)	103 (9.02)	62 (11.15)	5 (11.50)	
Yes	1544 (90.26)	1016 (90.98)	491 (88.85)	37 (88.50)	
CVD, n (%)					<0.001
No	1100 (65.66)	772 (70.57)	307 (56.14)	21 (53.45)	
Yes	614 (34.34)	347 (29.43)	246 (43.86)	21 (46.55)	
DR					
Yes	366 (19.66)	200 (15.34)	146 (27.26)	20 (41.02)	
No	982 (59.14)	632 (58.95)	328 (59.54)	22 (58.98)	
Unknown	366 (21.21)	287 (25.71)	79 (13.21)	0 (0.00)	

Continued

Table 1 Continued

Variables	Total (n=1714)	Normal nutrition group (n=1119)	Mild malnutrition group (n=553)	Moderate and severe malnutrition group (n=42)	P value
PIR, n (%)					0.010
<1	395 (18.06)	281 (19.97)	102 (13.51)	12 (24.77)	
≥1	1134 (73.82)	720 (73.01)	388 (75.82)	26 (70.07)	
Unknown	185 (8.12)	118 (7.02)	63 (10.67)	4 (5.16)	
Physical activity, MET·min/week, Mean (SE)	599.37 (60.08)	570.24 (56.84)	692.50 (145.60)	171.77 (60.48)	<0.001
Fasting glucose, mmol/L, mean (SE)	9.05 (0.12)	9.12 (0.16)	8.74 (0.25)	10.94 (1.15)	0.116
Antidiabetics, n (%)					<0.001
No	475 (27.45)	352 (32.50)	117 (18.18)	6 (7.65)	
Only hypoglycaemic drugs	744 (44.89)	480 (43.55)	252 (48.56)	12 (33.65)	
Hypoglycaemic drugs and insulin	495 (27.66)	287 (23.95)	184 (33.26)	24 (58.70)	
Diuretics, n (%)					0.018
No	1058 (64.86)	735 (67.81)	303 (59.04)	20 (59.02)	
Yes	656 (35.14)	384 (32.19)	250 (40.96)	22 (40.98)	
ACEI, n (%)					0.217
No	1097 (62.93)	730 (64.11)	336 (59.58)	31 (74.22)	
Yes	617 (37.07)	389 (35.89)	217 (40.42)	11 (25.78)	
UACR, mean (SE)	340.37 (27.07)	248.63 (19.72)	487.57 (67.58)	988.80 (303.05)	<0.001
Uric acid, μmol/L, mean (SE)	364.70 (3.06)	359.44 (4.35)	374.75 (4.94)	379.87 (16.61)	0.053
Energy, kcal, mean (SE)	1882.16 (31.19)	1953.27 (38.80)	1730.46 (43.77)	1893.24 (196.87)	<0.001
Protein, gram, mean (SE)	74.85 (1.54)	77.45 (1.90)	69.16 (2.06)	77.25 (9.40)	0.011
Carbohydrate, gram, mean (SE)	219.56 (3.86)	228.00 (4.65)	202.07 (5.66)	213.54 (25.53)	0.001
Total fat, gram, mean (SE)	75.91 (1.43)	78.64 (2.00)	69.68 (2.13)	82.12 (9.11)	0.016
Sodium, mg, mean (SE)	3271.95 (58.59)	3377.27 (81.96)	3049.20 (89.43)	3262.00 (422.12)	0.052
Potassium, mg, mean (SE)	2435.63 (48.19)	2494.87 (50.47)	2306.80 (73.44)	2478.21 (294.46)	0.058
eGFR, mL/min/1.73 m ² , mean (SE)	74.70 (1.07)	81.44 (1.18)	61.66 (1.38)	57.49 (4.56)	<0.001
Follow-up time, months, mean (SE)	58.23 (1.29)	60.71 (1.70)	54.35 (1.75)	39.49 (6.60)	0.002
Vital status, n (%)					<0.001
Alive	1241 (74.31)	868 (78.42)	358 (68.05)	15 (40.82)	
CVD-related death	177 (9.56)	89 (7.66)	78 (12.89)	10 (19.26)	
Diabetes-related death	40 (2.61)	22 (2.24)	16 (3.42)	2 (2.18)	
Nephropathy-related death	18 (1.11)	11 (1.23)	6 (0.84)	1 (1.22)	
Other cause-related death	238 (12.41)	129 (10.45)	95 (14.80)	14 (36.52)	

The included patients were divided into three groups according to the CONUT score: normal nutrition group (a score of 0–1), mild malnutrition group (a score of 2–4) and moderate and severe malnutrition group (a score of 5–12).

AA, associate; ACEI, ACE inhibitor; BMI, body mass index; CONUT, Controlling Nutritional Status; CVD, cardiovascular disease; DKD, diabetic kidney disease; DR, diabetic retinopathy; eGFR, estimated glomerular filtration rate; GED, general education development; MET, metabolic equivalent; PIR, poverty income ratio; UACR, urinary albumin to creatinine ratio.

Association between the CONUT score and mortality

The univariate analysis showed that patients with an increased CONUT score had a significantly higher risk of all-cause death (HR 1.53, 95% CI 1.37 to 1.71, $p<0.001$) and other cause-related death (HR 1.56, 95% CI 1.35 to 1.80, $p<0.001$). Compared with a CONUT score of 0–1, a CONUT score of 2–4 was associated with a significantly greater risk of all-cause death (HR 1.68, 95% CI 1.31 to 2.16, $p<0.001$) and

other cause-related death (HR 1.60, 95% CI 1.15 to 2.22, $p=0.005$) and a CONUT score of 5–12 was associated with a significantly elevated risk of all-cause death (HR 4.48, 95% CI 2.41 to 8.36, $p<0.001$), diabetes-related death (HR 1.90, 95% CI 1.10 to 3.28, $p=0.022$), nephropathy-related death (HR 1.84, 95% CI 1.07 to 3.17, $p=0.026$) and other cause-related death (HR 5.54, 95% CI 2.45 to 12.53, $p<0.001$). After controlling for age, race, marital status, smoking,

**Table 2** Association between the CONUT score and mortality in patients with DKD

Variables	Model 1		Model 2	
	HR (95% CI)	P value	HR (95% CI)	P value
All-cause mortality				
COUNT (continuous)	1.53 (1.37 to 1.71)	<0.001	1.30 (1.15 to 1.46)	<0.001
COUNT				
0–1	Ref		Ref	
2–4	1.68 (1.31 to 2.16)	<0.001	1.12 (0.91 to 1.37)	0.290
5–12	4.48 (2.41 to 8.36)	<0.001	2.80 (1.42 to 5.51)	0.003
CVD-related mortality				
COUNT (continuous)	1.07 (0.93 to 1.23)	0.323	1.07 (0.92 to 1.24)	0.381
COUNT				
0–1	Ref		Ref	
2–4	0.95 (0.74 to 1.23)	0.723	0.94 (0.71 to 1.24)	0.656
5–12	1.82 (0.84 to 3.94)	0.131	1.67 (0.82 to 3.39)	0.159
Diabetes-related mortality				
COUNT (continuous)	1.10 (0.99 to 1.21)	0.066	1.09 (0.98 to 1.22)	0.099
COUNT				
0–1	Ref		Ref	
2–4	1.01 (0.83 to 1.24)	0.904	1.00 (0.80 to 1.24)	0.995
5–12	1.90 (1.10 to 3.28)	0.022	1.78 (1.02 to 3.11)	0.041
Nephropathy-related mortality				
COUNT (continuous)	1.10 (0.99 to 1.22)	0.076	1.13 (1.00 to 1.27)	0.051
COUNT				
0–1	Ref		Ref	
2–4	1.05 (0.84 to 1.31)	0.655	1.09 (0.85 to 1.38)	0.500
5–12	1.84 (1.07 to 3.17)	0.026	1.84 (1.04 to 3.24)	0.036
Other cause-related mortality				
COUNT (continuous)	1.56 (1.35 to 1.80)	<0.001	1.54 (1.31 to 1.82)	<0.001
COUNT				
0–1	Ref		Ref	
2–4	1.60 (1.15 to 2.22)	0.005	1.24 (0.91 to 1.68)	0.167
5–12	5.54 (2.45 to 12.53)	<0.001	6.54 (3.18 to 13.45)	<0.001

Model 1, a univariate model; model 2, a multivariate model adjusted for age, race, marital status, smoking, hypertension, CVD, DR, PIR, antidiabetics, diuretics, UACR, uric acid, energy, protein, total fat, sodium and eGFR.

CONUT, Controlling Nutritional Status; CVD, cardiovascular disease; DKD, diabetic kidney disease; DR, diabetic retinopathy; eGFR, estimated glomerular filtration rate; PIR, poverty income ratio; UACR, urinary albumin to creatinine ratio.

hypertension, CVD, DR, PIR, antidiabetics, diuretics, UACR, uric acid, energy, protein, total fat, sodium and eGFR, a higher CONUT score was associated with a significantly greater risk of all-cause death (HR 1.30, 95% CI 1.15 to 1.46, $p<0.001$) and death from other causes (HR 1.54, 95% CI 1.31 to 1.82, $p<0.001$). In contrast to patients with a CONUT score of 0–1, those who scored 5–12 had a significantly increased risk of all-cause death (HR 2.80, 95% CI 1.42 to 5.51, $p=0.003$), diabetes-related death (HR 1.78, 95% CI 1.02 to 3.11, $p=0.041$), nephropathy-related death (HR 1.84, 95% CI 1.04 to 3.24, $p=0.036$) and other

cause-related death (HR 6.54, 95% CI 3.18 to 13.45, $p<0.001$) (table 2).

Association between the CONUT score and mortality in subpopulations

Sex

For males, compared with a CONUT score of 0–1, a score of 2–4 was associated with a significantly higher risk of all-cause death (HR 1.34, 95% CI 1.02 to 1.77, $p=0.033$), and a score of 5–12 was associated with significantly elevated risks of all-cause death (HR 4.40, 95% CI 2.52 to 7.69, $p<0.001$), diabetes-related death (HR 2.53, 95% CI 1.42

to 4.49, $p=0.002$), nephropathy-related death (HR 2.50, 95% CI 1.42 to 4.39, $p=0.001$) and other cause-related death (HR 5.65, 95% CI 2.65 to 12.03, $p<0.001$). For females, no significant differences were found in the risk of death between women with the CONUT scores of 0–1 and 2–4, and between women with the scores of 0–1 and 5–12 (all $p>0.05$) (online supplemental table 2, figure 2).

Cardiovascular disease

Patients with CVD who had a CONUT score of 5–12 exhibited significantly greater risks of all-cause death (HR 2.60, 95% CI 1.41 to 4.79, $p=0.002$), CVD-related death (HR 3.09, 95% CI 1.27 to 7.52, $p=0.013$), diabetes-related death (HR 3.85, 95% CI 2.07 to 7.18, $p<0.001$), nephropathy-related death (HR 4.07, 95% CI 2.18 to 7.57, $p<0.001$) and other cause-related death (HR 3.76, 95% CI 1.52 to 9.30, $p=0.004$) than those who had a score of 0–1. Among patients without CVD, a CONUT score of 5–12 was associated with significantly increased risks of all-cause death (HR 5.29, 95% CI 2.59 to 10.81, $p<0.001$) and other cause-related death (HR 6.03, 95% CI 2.43 to 14.97, $p<0.001$) than that of 0–1 (online supplemental table 2, figure 2).

Diabetic retinopathy

In patients with DR, a CONUT score of 5–12 was associated with significantly elevated risks of all-cause death (HR 3.74, 95% CI 1.97 to 7.08, $p<0.001$), CVD-related death (HR 2.55, 95% CI 1.22 to 5.34, $p=0.013$), diabetes-related death (HR 2.58, 95% CI 1.37 to 4.86, $p=0.003$), nephropathy-related death (HR 2.61, 95% CI 1.39 to 4.92, $p=0.003$) and other cause-related death (HR 4.76, 95% CI 2.02 to 11.21, $p<0.001$), as compared with a score of 0–1. For patients without DR, the risks of all-cause death (HR 3.43, 95% CI 1.80 to 6.54, $p<0.001$), nephropathy-related death (HR 2.47, 95% CI 1.23 to 4.95, $p=0.011$) and other cause-related death (HR 3.43, 95% CI 1.34 to 8.73, $p=0.010$) were significantly higher in those with a CONUT score of 5–12 than those with a score of 0–1 (online supplemental table 2, figure 2).

DISCUSSION

The current study investigated the association between the CONUT score and all-cause and cause-specific mortality among patients with DKD, and further assessed the association in different sex, CVD and DR subgroups. It was illustrated that for patients with DKD, moderate and severe malnutrition was associated with higher risks of all-cause death, diabetes-related death and nephropathy-related death than normal nutritional status. The association between the CONUT score and mortality varied across different sex, CVD and DR subgroups. These findings may act as evidence for risk stratification management and prognosis improvement in patients with DKD.

Malnutrition is a primary issue for patients with chronic diseases. In patients with DKD, malnutrition can exacerbate inflammatory activity and further impair nutrition

intake, lowering the quality of life and elevating mortality.¹⁷ Medical nutritional therapy has been proposed for DKD, which is beneficial for health and survival.¹⁸ The CONUT score assesses nutritional status with three objective indicators: serum albumin (protein metabolism), TC (lipid metabolism) and total lymphocyte count (immune function).⁷ Serum albumin plays an essential role in nutrition maintenance, metabolic transport and plasma colloid osmotic pressure.¹⁹ Hypoalbuminaemia was identified as a prognostic factor for death in elderly individuals.²⁰ Sun *et al* showed that a reduced level of serum albumin was associated with a greater risk of all-cause mortality in CKD, with the optimum threshold of 4g/dL.²¹ High cholesterol levels, a low-risk factor for undernutrition in the CONUT, were related to all-cause mortality in the general population.²² As a marker of immunological status, a decline in the total lymphocyte count can reflect susceptibility to infectious diseases, and malnutrition may lead to decreased lymphocyte maturation and circulating lymphocyte counts.¹¹ In a study by Tojek *et al*,²³ an association was found between the total lymphocyte count of less than 800 mg/L and the highest risk of in-hospital mortality.

With this CONUT score, this study found that compared with normal nutritional status, moderate and severe malnutrition (a score of 2–12) was associated with an increased risk of all-cause mortality. As a dimension of nutritional status assessment, inflammation facilitates the development of DKD,²⁴ possibly through releasing interleukin-1 (IL-1) from monocytes, which might initiate major complications and elevated mortality.²⁵ Additionally, inflammation is correlated with malnutrition and protein-energy wasting, potentially contributing to mortality in DKD.²⁶ As regards immune status, infectious complications can be caused by an immunosuppressive state, which may be associated with morbidity and mortality of patients with DKD.²⁷ In terms of nutritional status, a prior review has indicated that improvement in nutrition plays an important role in mortality among people with CKD.²⁸ Moderate and severe malnutrition was also identified to be associated with diabetes-related mortality and nephropathy-related mortality. Inflammatory response may facilitate the occurrence of T2DM via inducing insulin resistance, and it can be aggravated in the case of hyperglycaemia, promoting long-term complications of diabetes,²⁹ which may contribute to the risk of death. This is a potential explanation for diabetes-related mortality in DKD. Increases in inflammation may also account for mortality due to nephropathy.³⁰ Additionally, we did not find an association between the nutritional status measured by the CONUT score and CVD-related death. This may be attributed to the relatively small number of patients involved herein. Further, we found that undernourished males had higher risks of all-cause, diabetes-related and nephropathy-related death, while in females, no significant associations were observed between nutritional status and mortality. For patients with CVD or DR, moderate and severe malnutrition was

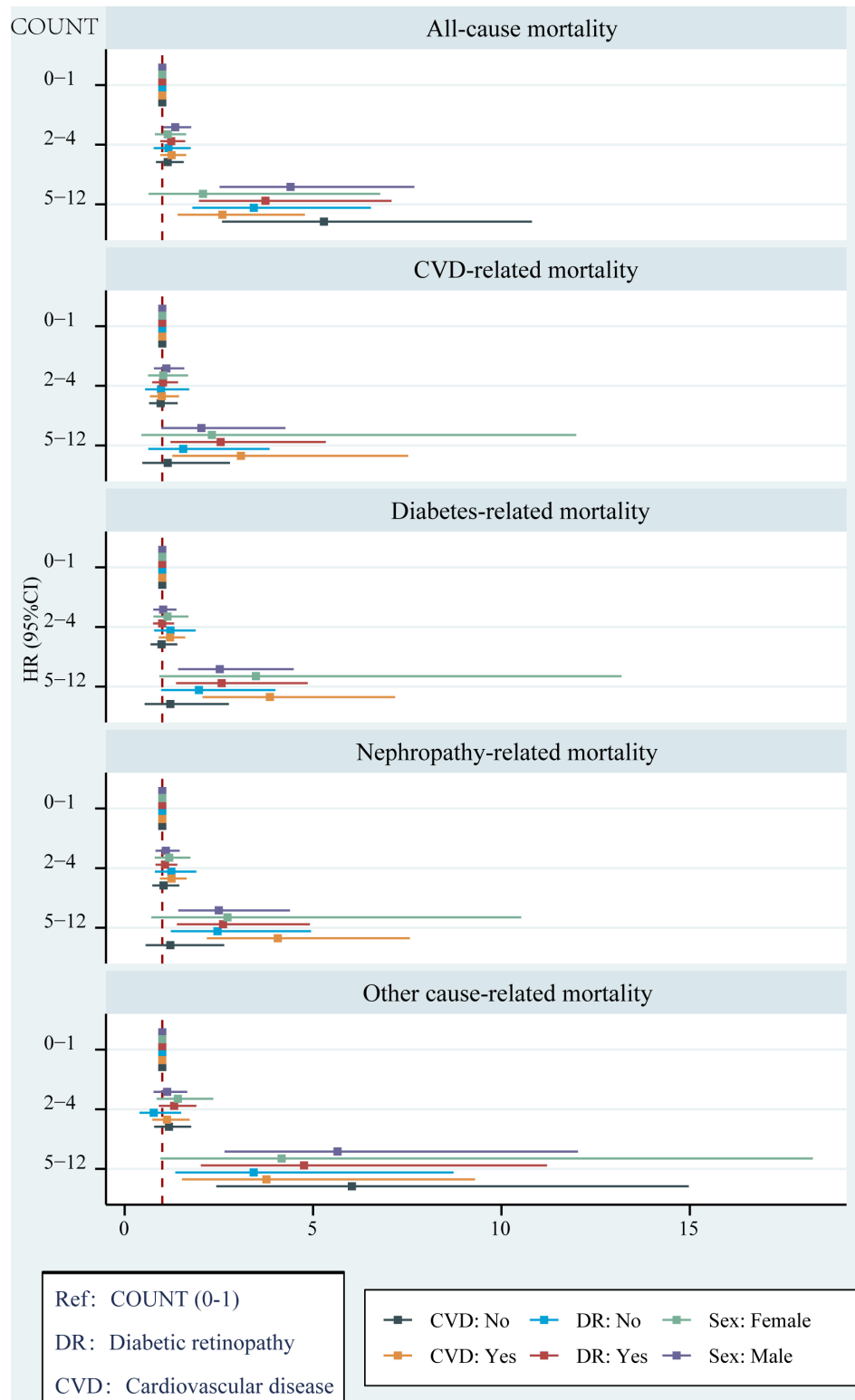


Figure 2 Association between the CONUT score and mortality in subpopulations. For the male subgroup, age, race, marital status, smoking, hypertension, CVD, physical activity, fasting glucose, diuretics, uric acid, energy, protein, sodium and eGFR were adjusted for; for the female subgroup, age, race, BMI, education level, marital status, smoking, CVD, PIR, physical activity, diuretics, uric acid, protein, carbohydrate and eGFR were adjusted for; for the subgroup with CVD, age, race, BMI, marital status, smoking, CVD, diuretics, UACR, uric acid and eGFR were adjusted for; for the subgroup without CVD, age, race, CVD, physical activity, diuretics, uric acid and eGFR were adjusted for; for the subgroup with DR, age, gender, race, BMI, marital status, smoking, hyperlipidaemia, physical activity, antidiabetics, diuretics, UACR, uric acid, carbohydrate, sodium and eGFR were adjusted for; for the subgroup without DR, age, race, marital status, diuretics, uric acid and eGFR were adjusted for. BMI, body mass index; CONUT, Controlling Nutritional Status; CVD, cardiovascular disease; DR, diabetic retinopathy; eGFR, estimated glomerular filtration rate; PIR, poverty income ratio; Ref, reference; UACR, urinary albumin to creatinine ratio.

associated with a greater risk of all-cause, CVD-related, diabetes-related and nephropathy-related death. Among patients without CVD, moderate and severe malnutrition was related to an elevated risk of all-cause death. For patients without DR, those with moderate and severe malnutrition had a higher risk of all-cause and nephropathy-related death. The significantly discrepant association of the CONUT score and mortality between males and females may be attributed to the limited ability of the CONUT score to distinguish between nutritional status in different genders since the score has no threshold differences in TC, serum albumin and lymphocyte count between men and women.⁷ Besides, biological differences between men and women with DKD may also be contributors, such as sex hormones, kidney haemodynamic function, adiponectin and oxidative stress.³¹ For example, higher levels of adiponectin in women might exert a compensatory action against further progression of DKD,^{32 33} and greater degrees of oxidative stress in men than women may be associated with a worse prognosis in DKD.³⁴ Clinicians may provide personalised advice for different subpopulations at a high risk of death. Large-scale studies are warranted to corroborate our findings.

In the current study, a nationally representative sample was employed to probe into the association between the CONUT score and the risk of mortality in patients with DKD for the first time. Close monitoring of immunonutritional status and appropriate nutritional care (eg, dietary regulation) for patients with DKD may help improve prognosis. Of note, the indicators required for CONUT score calculation are common and easily obtainable in clinical practice, with high practicality. Several limitations should be mentioned when interpreting our results. First, the diagnosis of DKD was based on a single measurement of eGFR and UACR, rather than continuous observation for 3 months. Second, some possible confounding factors, such as treatment during follow-up, have not been adjusted for in this analysis. Third, this research was conducted using the data from the American population, which may affect the applicability of the findings to other populations.

CONCLUSION

Compared with normal nutritional status, moderate and severe malnutrition was associated with higher risks of all-cause mortality, diabetes-related mortality and nephropathy-related mortality in DKD. Close attention should be paid to the immuno-nutritional status of patients with DKD to promote prognosis management and improvement. These findings need to be confirmed in the future studies.

Contributors HZ and HD designed the study. HZ wrote the manuscript. NL collected, analysed and interpreted the data. HZ and HD critically reviewed, edited and approved the manuscript. All authors read and approved the final manuscript.

Funding The authors have not declared a specific grant for this research from any funding agency in the public, commercial or not-for-profit sectors.

Competing interests None declared.

Patient and public involvement Patients and/or the public were not involved in the design, or conduct, or reporting, or dissemination plans of this research.

Patient consent for publication Consent obtained directly from patient(s).

Ethics approval This study involves human participants but the requirement of ethical approval for this was waived by the Institutional Review Board of Shanxi Bethune Hospital, Shanxi Academy of Medical Sciences, Tongji Shanxi Hospital, Third Hospital of Shanxi Medical University, because the data were accessed from NHANES (a publicly available database). The need for written informed consent was waived by the Institutional Review Board of Shanxi Bethune Hospital, Shanxi Academy of Medical Sciences, Tongji Shanxi Hospital, Third Hospital of Shanxi Medical University due to retrospective nature of the study.

Provenance and peer review Not commissioned; externally peer reviewed.

Data availability statement Data are available in a public, open access repository. Data are available in a public, open access repository. Open access data are available on the NHANES website (www.cdc.gov/nchs/nhanes/).

Supplemental material This content has been supplied by the author(s). It has not been vetted by BMJ Publishing Group Limited (BMJ) and may not have been peer-reviewed. Any opinions or recommendations discussed are solely those of the author(s) and are not endorsed by BMJ. BMJ disclaims all liability and responsibility arising from any reliance placed on the content. Where the content includes any translated material, BMJ does not warrant the accuracy and reliability of the translations (including but not limited to local regulations, clinical guidelines, terminology, drug names and drug dosages), and is not responsible for any error and/or omissions arising from translation and adaptation or otherwise.

Open access This is an open access article distributed in accordance with the Creative Commons Attribution Non Commercial (CC BY-NC 4.0) license, which permits others to distribute, remix, adapt, build upon this work non-commercially, and license their derivative works on different terms, provided the original work is properly cited, appropriate credit is given, any changes made indicated, and the use is non-commercial. See: <http://creativecommons.org/licenses/by-nc/4.0/>.

ORCID iD

Huifeng Zhang <http://orcid.org/0009-0007-4851-1714>

REFERENCES

- Ahmad E, Lim S, Lamptey R, *et al*. Type 2 diabetes. *Lancet* 2022;400:1803–20.
- Chatterjee S, Khunti K, Davies MJ. Type 2 diabetes. *Lancet* 2017;389:2239–51.
- Cole JB, Florez JC. Genetics of diabetes mellitus and diabetes complications. *Nat Rev Nephrol* 2020;16:377–90.
- Saran R, Robinson B, Abbott KC, *et al*. US renal data system 2018 annual data report: epidemiology of kidney disease in the United States. *Am J Kidney Dis* 2019;73:A7–8.
- Sabanayagam C, Chee ML, Banu R, *et al*. Association of diabetic retinopathy and diabetic kidney disease with all-cause and cardiovascular mortality in a multiethnic Asian population. *JAMA Netw Open* 2019;2:e191540.
- Mosterd CM, Kanbay M, van den Born BJH, *et al*. Intestinal microbiota and diabetic kidney diseases: the role of microbiota and derived metabolites in modulation of renal inflammation and disease progression. *Best Pract Res Clin Endocrinol Metab* 2021;35:101484.
- Ignacio de Ulíbarri J, González-Madroño A, de Villar NGP, *et al*. CONUT: a tool for controlling nutritional status. first validation in a hospital population. *Nutr Hosp* 2005;20:38–45.
- Kuroda D, Sawayama H, Kurashige J, *et al*. Controlling nutritional status (CONUT) score is a prognostic marker for gastric cancer patients after curative resection. *Gastric Cancer* 2018;21:204–12.
- Mineoka Y, Ishii M, Hashimoto Y, *et al*. Nutritional status assessed with objective data assessment correlates with a high-risk foot in patients with type 2 diabetes. *J Clin Med* 2022;11:1314.
- Wang J, Chen L, Huang Z, *et al*. A synergistic association between inflammation, malnutrition, and mortality in patients with diabetes. *Front Nutr* 2022;9:872512.
- Takagi K, Takahashi H, Miura T, *et al*. Prognostic value of the controlling nutritional status (CONUT) score in patients at dialysis initiation. *Nutrients* 2022;14:2317.
- Statistics NCHS. About NHANES. 2022. Available: https://www.cdc.gov/nchs/nhanes/about_nhanes.htm [Accessed Apr 2023].



- 13 Rovin BH, Adler SG, Barratt J, *et al.* Clinical practice guideline for the management of glomerular diseases. *Kidney International* 2021;100:S1–276.
- 14 Levey AS, Stevens LA, Schmid CH, *et al.* A new equation to estimate glomerular filtration rate. *Ann Intern Med* 2009;150:604–12.
- 15 Afkarian M, Zelnick LR, Hall YN, *et al.* Clinical manifestations of kidney disease among US adults with diabetes, 1988–2014. *JAMA* 2016;316:602–10.
- 16 Guo W, Song Y, Sun Y, *et al.* Systemic immune-inflammation index is associated with diabetic kidney disease in type 2 diabetes mellitus patients: evidence from NHANES 2011–2018. *Front Endocrinol (Lausanne)* 2022;13:1071465.
- 17 Sobotka L, Bláha V, Mistrík E, *et al.* Nutrition for the diabetic patient with kidney disease. *Vnitr Lek* 2008;54:475–7.
- 18 Rhee CM, Kalantar-Zadeh K, Moore LW. Medical nutrition therapy for diabetic kidney disease. *J Ren Nutr* 2021;31:229–32.
- 19 Friedman AN, Fadem SZ. Reassessment of albumin as a nutritional marker in kidney disease. *J Am Soc Nephrol* 2010;21:223–30.
- 20 Cabrerizo S, Cuadras D, Gomez-Busto F, *et al.* Serum albumin and health in older people: review and meta analysis. *Maturitas* 2015;81:17–27.
- 21 Sun J, Su H, Lou Y, *et al.* Association between serum albumin level and all-cause mortality in patients with chronic kidney disease: a retrospective cohort study. *Am J Med Sci* 2021;361:451–60.
- 22 Yi SW, Yi JJ, Ohrr H. Total cholesterol and all-cause mortality by sex and age: a prospective cohort study among 12.8 million adults. *Sci Rep* 2019;9:1596.
- 23 Tojek K, Banaś W, Czerniak B, *et al.* Total blood lymphocyte count as a prognostic factor among unselected inpatients. *Adv Med Sci* 2020;65:141–8.
- 24 Mitrofanova A, Fontanella AM, Burke GW, *et al.* Mitochondrial contribution to inflammation in diabetic kidney disease. *Cells* 2022;11:3635.
- 25 Mihai S, Codrici E, Popescu ID, *et al.* Inflammation-related mechanisms in chronic kidney disease prediction, progression, and outcome. *J Immunol Res* 2018;2018:2180373.
- 26 Dungey M, Hull KL, Smith AC, *et al.* Inflammatory factors and exercise in chronic kidney disease. *Int J Endocrinol* 2013;2013:569831.
- 27 Kurts C, Panzer U, Anders H-J, *et al.* The immune system and kidney disease: basic concepts and clinical implications. *Nat Rev Immunol* 2013;13:738–53.
- 28 Ikizler TA, Cano NJ, Franch H, *et al.* Prevention and treatment of protein energy wasting in chronic kidney disease patients: a consensus statement by the international society of renal nutrition and metabolism. *Kidney Int* 2013;84:1096–107.
- 29 Lontchi-Yimagou E, Sobngwi E, Matsha TE, *et al.* Diabetes mellitus and inflammation. *Curr Diab Rep* 2013;13:435–44.
- 30 Furman D, Campisi J, Verdin E, *et al.* Chronic inflammation in the etiology of disease across the life span. *Nat Med* 2019;25:1822–32.
- 31 Piani F, Melena I, Tommerdahl KL, *et al.* Sex-related differences in diabetic kidney disease: a review on the mechanisms and potential therapeutic implications. *J Diabetes Complications* 2021;35:107841.
- 32 Christen T, Trompet S, Noordam R, *et al.* Sex differences in body fat distribution are related to sex differences in serum leptin and adiponectin. *Peptides* 2018;107:25–31.
- 33 Looker HC, Krakoff J, Funahashi T, *et al.* Adiponectin concentrations are influenced by renal function and diabetes duration in Pima Indians with type 2 diabetes. *J Clin Endocrinol Metab* 2004;89:4010–7.
- 34 Yanes LL, Sartori-Valinotti JC, Reckelhoff JF. Sex steroids and renal disease: lessons from animal studies. *Hypertension* 2008;51:976–81.