

Figure 1Sup: Data sample flow chart

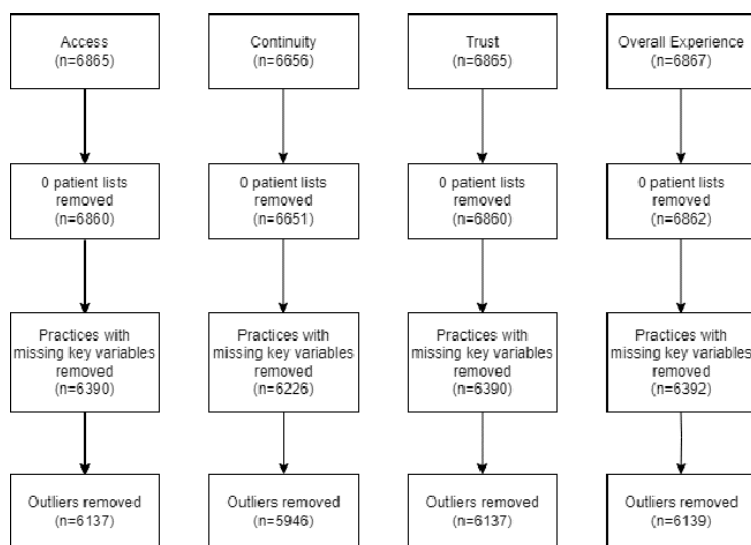


Table 1Sup: Extended practice characteristics for each outcome dataset

	<i>Access</i>	<i>Continuity</i>	<i>Trust</i>	<i>Overall Experience</i>
	Total (N=6137)	Total (N=5946)	Total (N=6137)	Total (N=6139)
<i>Total NHS Payments (£)</i> <i>Mean (SD)</i>	1,300,000 (806,000)	1,320,000 (794,000)	1,300,000 (806,000)	1,300,000 (806,000)
<i>Payments per Patient (£)</i> <i>Mean (SD)</i>	152 (40.3)	152 (39.4)	152 (40.3)	152 (40.3)
<i>Payments per Weighted Patient (£)</i> <i>Mean (SD)</i>	151 (35.4)	151 (34.7)	151 (35.4)	151 (35.4)
<i>Contract Type n (%)</i> <i>APMS</i>	136 (2.2%)	125 (2.1%)	136 (2.2%)	136 (2.2%)

<i>GMS</i>	4313 (70.3%)	4176 (70.2%)	4313 (70.3%)	4315 (70.3%)
<i>PMS</i>	1688 (27.5%)	1645 (27.7%)	1688 (27.5%)	1688 (27.5%)
<i>Unknown</i>	0 (0%)	0 (0%)	0 (0%)	0 (0%)
<i>Dispensing n (%)</i>				
<i>Yes</i>	860 (14.0%)	833 (14.0%)	860 (14.0%)	860 (14.0%)
<i>No</i>	5277 (86.0%)	5113 (86.0%)	5277 (86.0%)	5279 (86.0%)
<i>Unknown</i>	0 (0%)	0 (0%)	0 (0%)	0 (0%)
<i>Rurality n (%)</i>				
<i>Rural</i>	919 (15.0%)	885 (14.9%)	919 (15.0%)	919 (15.0%)
<i>Urban</i>	5218 (85.0%)	5061 (85.1%)	5218 (85.0%)	5220 (85.0%)
<i>Registered Patients</i>				
<i>Mean (SD)</i>	8640 (5220)	8790 (5150)	8640 (5220)	8640 (5220)
<i>Weighted Patients</i>				
<i>Mean (SD)</i>	8630 (5120)	8780 (5060)	8630 (5120)	8630 (5120)
<i>FTE GPs per 10,000 patients (pts)</i>				
<i>Mean (SD)</i>	5.61 (2.20)	5.62 (2.19)	5.61 (2.20)	5.61 (2.20)
<i>Total Patient number > 65 yrs</i>				
<i>Mean (SD)</i>	1620 (1210)	1650 (1200)	1620 (1210)	1620 (1210)
<i>% Patients with long-standing health condition</i>				
<i>Mean (SD)</i>	51.3 (8.58)	51.3 (8.58)	51.3 (8.58)	51.3 (8.59)

<i>Patient Experience rating (%)</i>				
<i>Mean (SD)</i>	69.1 (14.4)	49.1 (18.5)	95.3 (3.80)	83.4 (9.74)
<i>[Min, Max]</i>	[19.1, 100]	[2.14, 98.0]	[71.6, 100]	[32.2, 100]
<i>Response Rate (%)</i>				
<i>Mean (SD)</i>	35.9 (10.8)	36.0 (10.8)	35.9 (10.8)	35.8 (10.8)

Table 2Sup: Access, Continuity and Trust mediation models

	Access		Continuity		Trust	
	Coefficient	CI: 95%	Coefficient	CI: 95%	Coefficient	CI: 95%
Unadjusted Model						
Direct Effect of predictor on outcome	0.044	(0.037; 0.06)	0.044	(0.030; 0.06)	0.007	(0.006; 0.01)
Total Effect of predictor on outcome	0.062	(0.053; 0.07)	0.050	(0.036; 0.06)	0.013	(0.010; 0.01)
Indirect (Mediated) Effect	0.016	(0.013; 0.02)	0.006	(0.004; 0.01)	0.005	(0.004; 0.01)
Carr-Hill adjusted Model						
Direct Effect of predictor on outcome	0.048	(0.037; 0.06)	0.037	(0.022; 0.06)	0.007	(0.004; 0.01)

Total Effect of predictor on outcome	0.060	(0.048; 0.07)	0.041	(0.026; 0.06)	0.010	(0.0073; 0.01)
Indirect (Mediated) Effect	0.011	(0.009; 0.01)	0.004	(0.002; 0.01)	0.003	(0.0025; 0.0035)
Deprivation adjusted Model						
Direct Effect of predictor on outcome	0.047	(0.038; 0.06)	0.045	(0.030; 0.06)	0.008	(0.006; 0.010)
Total Effect of predictor on outcome	0.061	(0.053; 0.07)	0.050	(0.035; 0.06)	0.012	(0.010; 0.014)
Indirect (Mediated) Effect	0.015	(0.012; 0.02)	0.005	(0.003; 0.01)	0.004	(0.003; 0.005)