




BMJ Open Interventions to promote the health and well-being of children under 5s experiencing homelessness in high-income countries: a scoping review

Yanxin Tu ¹, Kaushik Sarkar,² Nadia Svirydzenka,³ Zoe Palfreyman,³ Yvonne Karen Parry,⁴ Matthew Ankers,⁴ Priti Parikh ⁵, Raghu Raghavan,⁶ Monica Lakhanpaul ¹

To cite: Tu Y, Sarkar K, Svirydzenka N, *et al.* Interventions to promote the health and well-being of children under 5s experiencing homelessness in high-income countries: a scoping review. *BMJ Open* 2024;**14**:e076492. doi:10.1136/bmjopen-2023-076492

► Prepublication history and additional supplemental material for this paper are available online. To view these files, please visit the journal online (<http://dx.doi.org/10.1136/bmjopen-2023-076492>).

Received 09 June 2023
Accepted 13 December 2023



© Author(s) (or their employer(s)) 2024. Re-use permitted under CC BY. Published by BMJ.

For numbered affiliations see end of article.

Correspondence to

Professor Monica Lakhanpaul; m.lakhanpaul@ucl.ac.uk

ABSTRACT

Objectives Homelessness among families with children under 5 residing in temporary accommodation is a growing global concern, especially in high-income countries (HICs). Despite significant impacts on health and development, these ‘invisible’ children often fall through the gaps in policy and services. The study’s primary objective is to map the content and delivery methods of culturally sensitive interventions for children under 5 experiencing homelessness in HICs.

Design A scoping review guided by the Preferred Reporting Items for Systematic reviews and Meta-Analyses extension for Scoping Reviews checklist.

Data sources Databases include PubMed, Medline, SCOPUS, The Cochrane Library and Google Scholar were searched up to 24 March 2022.

Eligibility criteria This scoping review includes studies that describe, measure or evaluate intervention strategies aimed at improving child health programmes, specifically those yielding positive outcomes in key areas like feeding, nutrition, care practices and parenting.

Data extraction and synthesis Articles were selected and evaluated by two independent reviewers, with a dispute resolution system involving a third reviewer for contested selections. The methodological quality of the studies was assessed using various tools including the Risk of Bias (RoB) tool, Cochrane RoB V.2.0, the Risk of Bias Assessment Tool for Non-randomized Studies (RoBANS) and the Grading of Recommendations Assessment, Development, and Evaluation (GRADE), each selected according to the type of article.

Results The database search yielded 951 results. After deduplication, abstract screening and full review, 13 articles met the inclusion criteria. Two predominant categories of intervention delivery methods were identified in this research: group-based interventions (educational sessions) and individual-based interventions (home visits).

Conclusion This review highlights effective interventions for promoting the health and well-being of children under 5 experiencing homelessness, including educational sessions and home visits. Research has supported the importance of home visiting to be instrumental in breaking down language, cultural and health literacy barriers.

STRENGTHS AND LIMITATIONS THIS STUDY

- ⇒ Adhered to the Arksey and O'Malley framework and the Preferred Reporting Items for Systematic reviews and Meta-Analyses extension for Scoping Reviews checklist, ensuring a focused and methodical approach.
- ⇒ The employment of diverse methodological quality assessment tools for different study types allows for a thorough and nuanced evaluation of potential biases, increasing the reliability of this review's conclusions.
- ⇒ Unlike systematic reviews, this review did not conduct formal data synthesis, potentially limiting the comprehensiveness of evidence overview.
- ⇒ High heterogeneity, resulting from the inclusion of various study designs, and low generalisability due to the restriction of studies to those conducted in HICs, limits the comparative and broader applicability of the results.

INTRODUCTIONS

As per the McKinney-Vento definition of homeless, homeless children and youths indicates individuals who lack a fixed, regular and adequate night-time residence.¹ This definition includes children and youths who are doubling up with others due to housing loss or economic challenges, residing in motels, hotels, trailer parks, or camping grounds due to lack of alternative adequate accommodations, living in emergency or transitional shelters, or abandoned in hospitals. It also covers those living in places not typically used for regular sleeping, such as cars, parks, public spaces, abandoned buildings, substandard housing, bus or train stations, as well as migratory children living in similar conditions.² The UN Office of the High Commissioner for Human Rights acknowledges that homelessness has ‘emerged as a worldwide human rights concern’, especially in high-income



nation-states with the means to address it.³ Homelessness among families with children is now a growing problem in high-income countries (HICs). Countries with Gross National Income per capita of US\$13 846 or more are defined as HICs.⁴ Between 2014 and 2018, family homelessness almost doubled in Ireland, rising from 407 to over 1600 families. Between 2006 and 2013, New Zealand had a 44% rise in family homelessness. In 2019, the USA had around 54 000 families with children, accounting for one-third of the country's homeless population.⁵ In 2019, the charity Shelter reported that a child loses their home every 8 min in Great Britain, which is the equivalent of 183 children per day.⁶ According to the Children's Commissioner, there might be as many as 210 000 homeless children living in temporary accommodation, or couch surfing in England, as well as roughly 585 000 people who are either homeless or in danger of becoming homeless.⁶

In particular, the plight of children aged 5 years or less residing in temporary accommodation is often overlooked or under-recognized. There is a lack of policy supporting them since they are not seen on the streets as homeless. However, many of the children have pre-existing conditions such as epilepsy, asthma, anxiety and diabetes, and potentially are the most susceptible to viral infection.⁶ Moreover, the first 5 years of life is a critical duration for the optimal development of the brain. This is especially important for children who experience poverty/housing/transient lifestyle, as this places them at risk of failing to reach the full development of the brain, potentially leading to many health concerns and issues with language development and motor skills and social problems.⁷

Our partnership initially concentrated on evidence-based and community-based participatory engagement approaches that enhance the health and well-being of children under 5s who are or at risk of being homeless. This was informed by an investigation into how services could adapt to, and learn from, global public health interventions and family experiences, the purpose of which was to first tailor current health strategies for effective outreach to populations who are homeless or at risk of homelessness. Then, second, in light of both existing and new findings, provide easily accessible resources to health and social care professionals, as well as families of 'invisible' children. These children were excluded from research and national policies, as they are often not counted by services, or are not seen as existing as 'homeless'. However, current literature did not elucidate on the existing intervention strategies, the delivery channels used by these strategies, the language and cultural barriers encountered, the methods for circumventing these barriers, and the creation of acceptable materials for children under 5s. To guide the literature search and review, the authors predefined several themes of importance for the health and well-being of homeless children: feeding and nutrition, care practices, dental care, mental health and well-being, safe sleeping, physical activity and parenting support. These themes, identified as common

problems in homeless populations and known to have been effectively addressed in other low-income and middle-income countries,^{8,9} served as the foundation for this scoping review. These themes are critical for the integrated health of children under 5s living in temporary accommodation, and there is a complex need to incorporate all these aspects to address or alleviate the current situation of homelessness.

The primary objective of this review is to map the content, and method of delivery of interventions that are culturally sensitive and accessible for populations at the crossroads of poverty/housing/transient lifestyle and focused on children under 5s. Specifically, our study aims to address the following points:

- ▶ Develop inclusive and engaging practice interventions for populations living in temporary accommodation/homelessness, with children under 5s.
- ▶ Identify the potential critical points of contact. These refer to individuals who play pivotal roles in delivering health services or interventions and engaging with the target population. They serve as key intermediaries, bridging the gap between the health system or intervention and the individuals it aims to benefit.
- ▶ Understand how to communicate with mobile populations who have poor health knowledge, literacy, and/or language barriers.
- ▶ Identify methods of creating appropriate, acceptable and accessible communication materials.

METHODS

This focused and methodical scoping review, which was enriched by insights and real-world experiences from global experts, followed the guidelines set forth by the Arksey and O'Malley framework¹⁰ as well as the Preferred Reporting Items for Systematic reviews and Meta-Analyses (PRISMA) extension for Scoping Reviews checklist for scoping reviews.¹¹ This review follows a predefined protocol (see online supplemental material 1). There was no patient and public involvement in this study. In aligning with the objectives and methodology of a scoping review, this study embraces an exploratory approach, encompassing a wide range of topics related to the health of homeless children.

Eligibility criteria

The eligibility criteria for our scoping review are structured to include studies that are in English, published between 2000 to 2022, and conducted in HICs as defined by the World Bank.⁴ The study focused on interventions targeted at children aged 5 years or less from marginalised or socially excluded families/population groups. It included studies that described, measured or evaluated a pilot or implementation of a strategy, tactic, process and/or method targeted at improving child health programmes, with a specific focus on mapping the culturally sensitive approaches. The interventions included were those that demonstrated improvements in outcomes such as service coverage and optimisation, access, utilisation

and specifically in the nine identified areas of (1) feeding, (2) nutrition, (3) care practice, (4) parenting, (5) dental, (6) well-being, (7) mental health, (8) safe sleeping and (9) physical activity. Studies in languages other than English, from non-HICs as per the World Bank, targeting children over 5 years, involving non-marginalised groups, or those not demonstrating improvement in the outlined nine areas were excluded. By adhering to these eligibility criteria, the scoping review will ensure that the findings are based on the highest quality evidence and are relevant to the topic of interest. In case the number of these studies is less than 30, we will broaden our investigation to include studies on interventions aimed at children over the age of 5, but only if they offer valuable insights or strategies that can be adapted for younger age groups.

Information sources and search strategy

The databases searched from inception of this project up to 24 March 2022 included: PubMed, Medline, SCOPUS, The Cochrane Library (Cochrane Database of Systematic Reviews, Cochrane Central Register of Controlled Trials (CENTRAL)), and Google Scholar. One researcher (YT) developed the search strategy after preliminary deliberations and consensus within the review team. Conference abstracts and Third Sector Reports were also searched for grey literature. Experts from Donor/Philanthropic organisations and other key experts were contacted for any additional published or unpublished work.

The search strategy was developed to ensure that any relevant studies were identified helping to make the review exhaustive. In the search for literature on the homeless population, two concepts were used: 'marginalisation' and 'social exclusion'. The search strategy was comprised of key search terms drawn from current search strings and customised for each electronic database. We also conducted the relational and citation search to screen cited articles of the first iteration of selections, followed by citations and related articles for each inclusion in PubMed, Google Scholar and PubMed, respectively.

Study selection

Search results were uploaded to the Covidence software management system¹² where several reviewers screened content. All articles were extracted and compiled in a single spreadsheet. The spreadsheet was equipped with duplicate study filters, and inclusion filters (inclusion criteria not managed through Search Term) and selection columns. Inclusion and selection filters were filled in independently by one reviewer (YT). All studies selected by two reviewers in Covidence were included, while all studies rejected by two reviewers in Covidence, were rejected. All studies marked for inclusion by one reviewer were marked as disputed selection. In the case of disputes, a third expert reviewer (ML) made the final inclusion decision. Two round of screening was undertaken: title-abstract (TiAb) and full text (FT). The reasons for exclusion was recorded and mapped in a flow chart, as per PRISMA guidelines.

Data charting process

A data extraction form (DEF) was developed as per CEB Critically Appraised Topics (CAT) guidelines by KS and piloted by YT on the first six article included. The piloting essentially informed whether the DEF could extract necessary and sufficient information as per the objectives set. The form was then amended based on the pilot and the finalised form used to extract data from full-text articles. The authors abstracted data on article characteristics (target geography, study design), demographic characteristics (age and gender) and intervention characteristics (number of participants, number of sites, type of setting, duration, channels and agency of delivery, service point, end-users).

Methodological quality appraisal

The methodological quality of included articles was assessed using different tools, relative to the article type. The assessment of Risk of Bias (RoB) tool was only used for interventional studies when results were quantitative analysis or pooling. GRADE¹³ was used for assessment of bias in selective publications and selective non-reporting for systematic reviews. For randomised trials, Cochrane RoB V.2.0¹⁴ was used to assess multiple sources of bias and RoBANS¹⁵ was used for assess bias due to selective non-reporting and bias in the selection of the reported result. All studies were critically appraised as per the CAT grading.

Data synthesis

The data from the included studies were collated, and a summary table was constructed to present the characteristics and conclusions of each study (table 1). This table encapsulated key information including study authors, age group targeted, geographical location, sample size, contact points, intervention outcomes and their primary focus. The integration of our findings focused on extracting meaningful insights from the commonalities and variances across different studies. This included identifying effective communication strategies and contact points that are crucial in reaching and engaging families and children in need. We synthesised the information to identify common themes, participants characteristics, delivery methods, critical point of contact and communication strategy with poor health literacy population.

Patient and public involvement

No patient involved.

RESULTS

The literature search

The database search yielded a total of 951 results; no additional articles were found in the grey literature search. 523 records were evaluated after deduplication. After screening title and abstract, 433 relevant articles were excluded. This resulted in 90 articles for review, of which

**Table 1** Summarisation in data extraction of included studies

| Authors | Age | Location | Sample size | Contact points | Intervention focus |
|--|---------------------------|-------------|-------------|---|---|
| Burgi <i>et al</i> ²⁸ 2012 | 5.2 years (SD=0.6) | Switzerland | n=652 | Health promoters (volunteers) and preschool teacher | Sessions of physical activity (PA) for children, workshops for teachers, interactive information and discussion evenings for parents |
| Foka <i>et al</i> ²⁵ 2021 | 7–12 years | Greece | n=72 | Trained facilitators (volunteers) | Resilience-building programme with group-focused interactive educational activities |
| Goodman <i>et al</i> ¹⁸ 2022 | 6 months | USA | n=1243 | Trained nurses and staff | A home visit of 2 hours duration is implemented with the aim to enhance the health and overall well-being of families having infants and young children |
| Grace <i>et al</i> ¹⁶ 2019 | 15 months | Australia | n=363 | Trained volunteers | Weekly 2-hour home visits by trained volunteers, targeting social isolation, community connectedness and parenting skills |
| Gross <i>et al</i> ¹⁷ 2009 | 2–4 years | USA | n=292 | Trained volunteers | 11 weekly video scenarios and group discussions for parental behaviour enhancement |
| Guerrero <i>et al</i> ²⁰ 2021 | 0–12 years old | USA | n=1749 | Trained staff (volunteers) | Group-based educational sessions on stress, depression and parenting |
| Holtrop and Holcomb ²¹ 2018 | 3.18 years old (SD=1.66) | USA | n=12 | Marriage and family therapist | Parent management training encourages parenting strategies through educational sessions, practice tasks, and satisfaction surveys |
| Melley <i>et al</i> ²² 2010 | 2 weeks–3 years old | USA | n=87 | Trained nurses and parents | Enhanced children's resilience in homelessness through interactive therapy sessions |
| Ristkari <i>et al</i> ²³ 2019 | 4 years old | Finland | n=463 | Professionals in healthcare and social services | Web-based parent training for basic and practical positive parenting skills, with follow-up telephone coaching to improve behaviour |
| Rowe <i>et al</i> ²⁴ 2012 | 0–4 years old | Australia | n=116 | Early childhood professionals and trained nurses | Tweddle Child & Family Health Service (TCFHS) and Day Stay Program (DSP) offer individual, and group level educational sessions for positive parenting skills, focusing on sleep, feeding and establishing routines |
| Dugravie <i>et al</i> ¹⁹ 2013 | prenatal to 24 months old | France | n=440 | Psychologists | Psychologists' home visits for mental wellness, attachment and depression management over 14 sessions |
| Spijkers <i>et al</i> ⁵⁹ 2010 | 9–11 years | Netherlands | n=160 | Trained nurses | Multilevel parenting programme promoting children's social, emotional, and behavioural development through consultations, educational sessions, home visits and parent-child interactions. |
| Yousey <i>et al</i> ²⁷ 2007 | 18 months–6 years old | USA | n=56 | Trained nurses | Improving homeless children's nutrition by educating parents and shelter food providers through sessions developed by dietitians |

77 were excluded, as they did not meet the inclusion and exclusion criteria (figure 1).

Data summary and synthesis

Data from included studies were collated, and table 1 presents characteristics and conclusions reported.

Quality review

Based on the screening results of Cochrane RoB V.2.0, the study by Grace *et al* exhibited a risk of performance bias. Caregivers and personnel administering the interventions were aware of participants' allocated intervention throughout the trial, as this information was disclosed by participants in their questionnaire responses about their experiences with services.¹⁶ Furthermore, there was a risk of selection bias in the study by Gross *et al* due to

issues with the randomization process. Parents were not randomly assigned to different intervention levels, but instead chose how many group sessions they attended. Consequently, observed improvements in child behaviour might be attributed to factors associated with parental attendance, rather than the intervention itself.¹⁷ Study of Goodman *et al* is limited by the use of self-report data, which could contribute to recall and social-desirability bias.¹⁸ Concerns were also raised regarding bias due to missing data for study by Dugravie *et al*. Only half of the participants completed their perinatal home-visiting programme.¹⁹

In light of the screening results of RoBANS, study of Guerrero *et al* is also constrained by the use of self-report data.²⁰ The challenge of retaining parents was

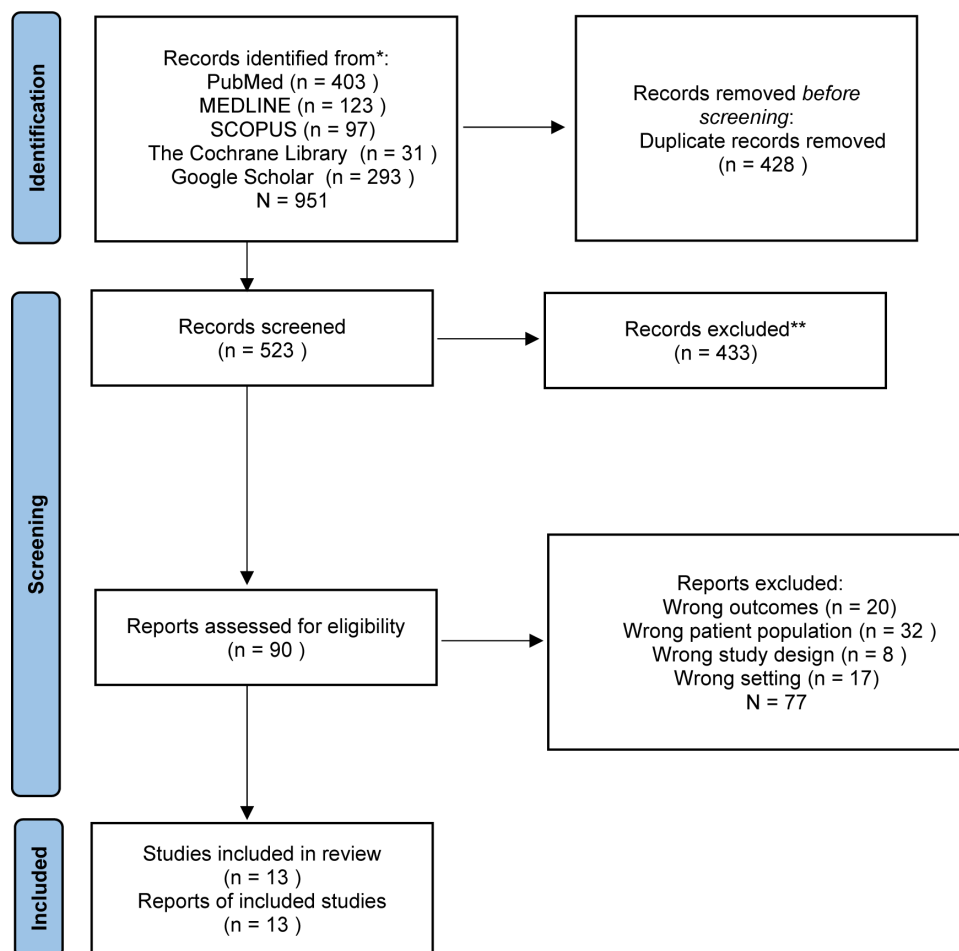


Figure 1 Preferred Reporting Items for Systematic Reviews and Meta-Analyses (PRISMA) 2020 flow diagram.

also a notable drawback of the research by Holtrop *et al*, since only 50 of the participants attended more than fifty percent of the sessions.²¹ In general, we did not exclude any studies based on risk-of-bias assessment.

Characteristics of intervention programmes

Intervention themes

In total, 13 studies were included for review (table 1). Of the nine targeted intervention themes in the inclusion criteria, none pertaining to dental outcomes for marginalised children in HICs were identified in the search. Several overlapping themes, such as feeding, nutrition, safe sleeping and mental health, were commonly addressed through enhancing positive parenting skills and support. Overall, four intervention theme categories were identified from the evidence synthesis.

- ▶ Positive parenting skills (sleeping and settling, safe sleep, feeding and meal time, establishing routines, attachment and bonding).^{17 18 21–24}
- ▶ Mental health and well-being (social isolation, chronic stress and depression, toddler behaviour).^{16 19 20 25 26}
- ▶ Nutrition (improve nutrition knowledge of parents).²⁷
- ▶ Physical activity (life style, adiposity and fitness).²⁸

Characteristics of participants

On an initial exploration of the literature, the number of studies within this age range was limited. Given the importance of our research question and the potential benefits of gaining a broader understanding of the available interventions, this study encompassed studies involving children above five. The majority of the studies encompassing children aged under 5-year-olds,^{16–24 27 28} 2 studies included were targeted on early childhood (ages 6–11).^{25 26} The justification for this approach lies in the potential transferability of interventions for slightly older children to younger age groups.

Gender distribution is generally even and homogeneous across different study. However, in a non-randomised intervention study by Holtrop *et al*,²¹ the sample consisted of 75% females and 25% males. Gender distribution was not specified in the studies by Yousey *et al* and Guerrero *et al*.^{20 27} The backgrounds of the participants varied widely across the included studies. Participants encompassed children of migrant and/or parents with low education levels (ELs), children from homeless or poverty-stricken families, newborn infants from transitional housing communities and families living in low socioeconomic areas.

The method of delivery

Detailed description of the intervention programmes are shown in table 1. The intervention duration varies from 1 week to 2 years, with four included studies having intervention durations of over 12 months,^{16 17 19 28} four studies ranging from 6 to 12 months,^{18 20 21 26} and five studies lasting less than 6 months.^{22–25 27} The interventions identified in this study have been broadly categorised as follows:

- ▶ Education-based group interventions, performed as group-based intervention, such as those based on the Webster-Stratton Model²⁹ and the Oregon Model,³⁰ are effective in improving parenting practices and child behaviour, especially in socioeconomically disadvantaged communities.^{17 21 23 24 27 28} These include methods such as web coaching, videotaped vignettes, group discussions and family meetings. Broadening the intervention scope to include other involved adults and offering education on nutrition, physical activity, media use and sleep further boosts their efficacy. Programmes like the Strengths for the Journey in refugee camps have used positive psychology concepts,²⁵ while the Parent–Child Interaction Therapy model³¹ successfully strengthened parent–child relationships in shelters. Overall, these education-based group interventions offer a cost-effective, holistic approach to child welfare.
- ▶ Home-visiting interventions involved trained professionals offering support and education to families with young children in their homes, with interventions being adapted to each family's unique needs, often complemented by group-based interventions. The goal was to foster community connectivity and independent utilisation of services.^{15 18 25} Some studies, such as Guerrero *et al*'s work, supplement these home visits with group-based education, training staff and parents in stress and depression management via a flexible, Train-the-Trainer approach.¹⁶ Additionally, the Positive Parenting Program employs a multi-level system of family intervention combining home-visiting and education session approaches, escalating in intensity based on the severity of the child's behavioural and emotional issues.²⁶

Critical points of contact

Marginalised children may face a variety of barriers that can prevent them from accessing healthcare, education, social services and other resources that are necessary for their well-being. Designing contextual, culturally sensitive and diverse interventions remains a challenge. However, identifying effective points of contact for interventions can help overcome these obstacles. Studies have used maternal and child health nurses,^{18 22 24 26 27} and health professionals with relevant expertise,^{19 21 23 24} as critical points of contact. Trained volunteers, often acting as health promoters or facilitators, have also served this role.^{16 17 20 25 28} Nurses and trained volunteers are cost-effective, easy to train and access. Health professionals typically possess greater knowledge, skills and experience,

adhering to strict professional standards. It was hypothesised that professionals who were more highly trained in interested field would be more competent in implementing interventions precisely and effectively.¹¹ The choice of critical points of contact hinges on the study's complexity and scope, warranting a cost-effectiveness analysis.

Communication with poor health literacy population

This review notably aimed to explore strategies for creating suitable, acceptable and accessible communication materials, especially for mobile populations with limited health knowledge, literacy, or language skills, particularly those with children under 5. In relation to the development of such materials, the Chicago Parent Program, as described in the study by Gross *et al*, devised an intervention content and strategy. Communication materials were created in partnership with an advisory council of parents, including seven African-American and five Latino parents from different neighbourhoods in Chicago. This council provided input to the programme creators about their parenting challenges, the scenarios they would prefer to see in video format, and the best ways to present parenting techniques that align with their values, lifestyle and cultural norms. This approach made the content patient-oriented, readily acceptable and culturally sensitive.¹⁷ Yousey *et al* and Guerrero *et al* discussed making teaching materials, handouts and class activities in a low-literacy format, visually appealing (with pictures and varied colours), and game-oriented (puzzles, riddles) as useful strategy that make acceptable, and accessible communication material.^{20 27} As materials developed for marginalised parents with poor health literacy or low ELs, it is important to provide information in different languages. Burgi *et al* also equipped native speakers of the main foreign languages to answer any questions from parents throughout the intervention to break language barriers.²⁸ In terms of the communication method with marginalised population, the reviewed articles emphasised the importance of home-visiting, as a less formal, relationship-based approach is potentially crucial in overcoming barriers to service engagement, such as language and cultural obstacles, and limited health literacy.^{16 18 19 26}

DISCUSSIONS

Group-based interventions

Educational sessions were the most commonly employed strategy in group-based interventions included in this scoping review. Providing educational sessions in group level can be a valuable and effective approach to supporting families with children under 5, who experience homelessness in HICs. Families experiencing homelessness may feel isolated and disconnected, and participating in a group-based intervention can provide an opportunity for them to connect with other families in similar situations.¹⁶ Therefore, group-based interventions can provide families with a sense of social support and

community. Educational sessions can also be tailored to meet the specific needs of families experiencing homelessness with children under 5, since the content of sessions are dependent on the health needs. In short, group-based educational session interventions can empower families experiencing homelessness by providing them with the tools, knowledge, and support they need to improve their situation.

Web-based sessions are an innovated form of carrier of education and thus modifying behaviours and improve health outcomes in children under 5 experiencing homelessness. Parent training programmes that use technology can have numerous advantages compared with conventional interventions, including improved consistency, enhanced availability, increased convenience and a reduction in both time and financial expenditure.^{32 33} The concept of technology-based parent training is not new; dating back to 1988, Webster-Stratton and his team²⁹ used video recordings as the main medium to conduct a parent training initiative. The innovation of web-based sessions offers an efficient platform for imparting necessary knowledge, modifying behaviours and improving health outcomes in the children under 5 living in temporary accommodation. Given the high usage of cell phones among the homeless population in HICs, the potential for web-based interventions becomes even more evident. This suggests a promising intersection between technology and accessible parent training programmes within the context of homelessness. Evidence indicated that most people experiencing homelessness have cell phones in HICs. In a case report conducted in Los Angeles, USA, 85% of homeless people used a cell phone and used text messaging daily, and 51% accessed the Internet on their cell phone.³⁴ A number of other studies have postulated a convergence on the similar findings.^{35–37} The current cell phone using status support the possibility of Web-based intervention use in the homelessness context. Web-based interventions can potentially eliminate the obstacles related to in-person sessions, allowing individuals to pursue assistance for mental health issues without the concern of stigma.^{38–40} The web-based intervention was demonstrated to be low cost, low threshold and of great implications for evidence-based interventions in the future. Accordingly, recent studies in the sphere of parent training have pivoted towards online training programmes. These interactive online training platforms for parents can successfully surmount numerous obstacles typically encountered during the execution phase of traditional programmes, suggesting a promising intersection between technology and accessible parent training programmes within the context of homelessness.²³

Individualised interventions

Parents, and particularly mothers, are susceptible to social isolation, especially during the initial transition to parenthood when they may experience intense feelings of fatigue or a lack of readiness. In research concerning parents facing additional challenges, such as parenting a

child with a disability, recent immigration, experiencing cognitive or mental health difficulties, the prevalence of social isolation was found to be significant.^{41–43} To address this issue, one commonly used strategy is home visiting. Typically coordinated by a local organisation, this intervention involves assigning a volunteer or professional to provide social support to individuals identified as needing additional help. Through regular visits, these health providers offer a variety of support services and work towards enhancing the individual's engagement with formal services, fostering greater community connection and promoting independent utilisation of services.

Individualised interventions (home-visiting) can be more flexible than group-based interventions, as they can be adapted to meet the changing needs of families over time, provide personalised support tailoring to different family's needs, provide families with access to a range of resources and services, and provide a greater sense of confidentiality and privacy. These individualised approaches are instrumental in dismantling barriers to service engagement, including those tied to language and culture.⁴⁴ Previous studies advocate for the possible benefits of home visits by non-professionals, such as facilitating the dissemination of health-related information,⁴⁵ enhancing social networks for those in isolation, fostering emotional well-being and parental proficiency, and endorsing positive health outcomes.⁴⁶ Furthermore, previous research has emphasised the value of home-visiting, a less formal, relationship-based approach that complements other more structured services in the service landscape.⁴⁴ This idea suggests that combining group-level educational sessions with home visits could reinforce training content by allowing for individual feedback collection and catering to personal needs. Given these potential benefits of individualised interventions, the strategy of home-visiting has gained attention in both research and practice. By bridging the benefits of both individualised interventions and community support, home-visiting appears to be a promising strategy that could be more widely applied in future intervention designs for homeless population.

Research gap

While there's a growing focus on understanding barriers to dental services for the homeless population in HICs, it is evident that service provision, particularly for homeless children, is woefully inadequate.^{47–49} Studies have shown a lack of dental healthcare services for the homeless across governmental, private and third-sector levels.⁴⁷ Moreover, current peer-reviewed literature is sparse on strategies improving access to, and uptake of, dental care for this marginalised group.⁵⁰ A scoping review of grey literature identified only two services specifically catering to the homeless population in Australia.⁵⁰ The effectiveness of these services remains unknown, raising questions about their generalisability across various geographical settings or age groups. The issue is pressing considering the vulnerability of marginalised children to adverse



dental problems. An estimated three million children in Europe are believed to receive inadequate dental treatment,⁵¹ and children from low-income families are twice as likely to have cavities compared with those from higher-income households.⁵² Consequently, there is an urgent public health need to implement targeted dental services for young children within the homeless population.

In the context of our scoping review, another noticeable gap is that only one study focused specifically on the theme of physical activity.²⁸ This paucity of research is a concern given the global public health issue of childhood overweight and obesity.⁵³ In addition, children of migrant parents and those with low socioeconomic status are considered high-risk groups for the development of obesity and of low fitness, which is known as the hunger-obesity paradox.⁵⁴ In addressing this issue, it was scoped that Burgi *et al* developed a lifestyle intervention in Switzerland aimed at enhancing physical activity level in preschool children, primarily from migrant or lower EL families.²⁸ This intervention showed beneficial effects, yet it remains an outlier; overall, interventions in these populations have shown less effectiveness.^{55–58} Given the magnitude of the obesity and low fitness issue among homeless populations, the paucity of targeted interventions underlines a pressing need for further research. Future studies should aim to develop effective, evidence-based approaches that integrate health promotion programmes within the broader context of social and cultural values. This could help in designing interventions tailored to this vulnerable population, thereby addressing this significant gap in the research.

Strengths and limitations

This study represents the first scoping review of peer-reviewed literature dedicated specifically to intervention approaches for marginalised children living in temporary accommodation under 5 years old across various themes. We deployed a rigorous strategy to extensively map available evidence, with the aim of identifying knowledge gaps to inform future research. The quality of all included studies was high, underscoring the credibility of our findings. Despite these strengths, several limitations should be acknowledged. Unlike systematic reviews, scoping reviews typically do not conduct formal data synthesis. Consequently, the results may not provide as comprehensive or robust an overview of the evidence as systematic reviews do. Furthermore, this review exhibits a high level of heterogeneity due to the incorporation of studies with diverse designs and methodologies, which can make comparing and synthesising results challenging. Lastly, this review's generalisability may be limited due to the typically small scale of interventions in the included studies. This focus on HICs could also limit the generalisability of the findings to countries with different socioeconomic contexts and resource availability.

CONCLUSIONS

This review sheds light on health interventions that effectively reach children under 5 years old who are homeless or at risk of homelessness. It contributes not only to the literature but also provides actionable resources for health and social care professionals and the families of these often 'invisible' children. While a robust body of research focuses on parenting support, mental health, well-being, nutrition and feeding, and care practices, we found a significant gap in addressing dental health and overweight within marginalised families in HICs. The review of 13 interventions revealed that 2 primary methods, group-based educational sessions and individual-based home visits, hold promise. Notably, an integrated approach combining these two methods appears to be feasible. It was also identified that health professionals, nurses and trained volunteers play crucial roles in delivering these interventions. Despite these insights, several areas necessitate further investigation. For example, a comparison of cost-effectiveness between group-based and individualised interventions remains elusive. Moreover, the review identified a common issue of low community connectedness and service utilisation, highlighting the need to explore ways to enhance community resource usage in HICs further.

Author affiliations

¹Population, Policy and Practice Research and Teaching Department, University College London Great Ormond Street Institute of Child Health, London, UK

²Aceso Global Health Consultants Limited, London, UK

³School of Applied Social Sciences, De Montfort University Faculty of Health and Life Sciences, Leicester, UK

⁴College of Nursing and Health Sciences, Flinders University, Adelaide, South Australia, Australia

⁵The Bartlett School of Sustainable Construction, University College London, London, UK

⁶School of Nursing and Midwifery, De Montfort University Faculty of Health and Life Sciences, Leicester, UK

Twitter Yvonne Karen Parry @ParryYvonne

Contributors Each author made substantial contributions to the design and execution of the study, and to the writing and revising of this article. ML, as the guarantor of this work, accepts full responsibility for the work and the conduct of the study, has access to the data, and controls the decision to publish. YT played a primary role in conceptualising the study, data collection and analysis, and drafting and revising the manuscript. KS, ML and NS guided the study protocol and developed the search strategy. KS was actively involved in data collection and analysis. ML and NS were key contributors to the study conception and design, guided data analysis, and revised the manuscript. PP, ZP, YKP, MA and RR were responsible for all major areas of concept development and study planning, were consulted on the data analysis and its interpretation, and provided manuscript edits. All authors reviewed and finalised the manuscript.

Funding This work was supported by the ESRC as part of UK Research & Innovation's rapid response to COVID-19 (ES/V016253/1).

Competing interests None declared.

Patient and public involvement Patients and/or the public were not involved in the design, or conduct, or reporting, or dissemination plans of this research.

Patient consent for publication Not applicable.

Ethics approval Not applicable.

Provenance and peer review Not commissioned; externally peer reviewed.

Data availability statement Data are available in a public, open access repository. Data are available upon reasonable request to the corresponding author (<https://orcid.org/0000-0002-9855-2043>).

Supplemental material This content has been supplied by the author(s). It has not been vetted by BMJ Publishing Group Limited (BMJ) and may not have been peer-reviewed. Any opinions or recommendations discussed are solely those of the author(s) and are not endorsed by BMJ. BMJ disclaims all liability and responsibility arising from any reliance placed on the content. Where the content includes any translated material, BMJ does not warrant the accuracy and reliability of the translations (including but not limited to local regulations, clinical guidelines, terminology, drug names and drug dosages), and is not responsible for any error and/or omissions arising from translation and adaptation or otherwise.

Open access This is an open access article distributed in accordance with the Creative Commons Attribution 4.0 Unported (CC BY 4.0) license, which permits others to copy, redistribute, remix, transform and build upon this work for any purpose, provided the original work is properly cited, a link to the licence is given, and indication of whether changes were made. See: <https://creativecommons.org/licenses/by/4.0/>.

ORCID iDs

Yanxin Tu <http://orcid.org/0009-0003-8426-7019>

Priti Parikh <http://orcid.org/0000-0002-1086-4190>

Monica Lakhanpaul <http://orcid.org/0000-0002-9855-2043>

REFERENCES

- Miller PM. An examination of the McKinney-Vento act and its influence on the homeless education situation. *Educ Policy* 2011;25:424–50.
- Homeless, N.C.f.t. Who is homeless?; 2005.
- Housing, S.R.o.t.r.t.a. Report on homelessness as a global human rights crisis. 2015. Available: <https://www.ohchr.org/en/calls-for-input/report-homelessness-global-human-rights-crisis> [Accessed 26 Apr 2022].
- Bank, W. World Bank country and lending groups—World Bank data help desk. World Bank Country and Lending Groups—World Bank Data Help Desk; 2021.
- 2019 AHAR: part 1—PIT estimates of homelessness in the U.S. HUD exchange U.S. Department of Housing and Urban Development; 2020. Available: <https://www.hudexchange.info/resource/5948/2019-ahar-part-1-pit-estimates-of-homelessness-in-the-us>
- Rosenthal DM, Ucci M, Heys M, et al. Impacts of COVID-19 on vulnerable children in temporary accommodation in the UK. *Lancet Public Health* 2020;5:e241–2.
- Cusick SE, Georgieff MK. The role of nutrition in brain development: the golden opportunity of the “first 1000 days”. *J Pediatr* 2016;175:16–21.
- Zlotnick C, Tam T, Zerger S. Common needs but divergent interventions for U.S. homeless and foster care children: results from a systematic review. *Health Soc Care Community* 2012;20:449–76.
- Weber JJ. A systematic review of nurse-led interventions with populations experiencing homelessness. *Public Health Nurs* 2019;36:96–106.
- Levac D, Colquhoun H, O'Brien KK. Scoping studies: advancing the methodology. *Implement Sci* 2010;5:69.
- Tricco AC, Lillie E, Zarin W, et al. PRISMA extension for scoping reviews (PRISMA-SCR): checklist and explanation. *Ann Intern Med* 2018;169:467–73.
- Innovation VH. Covidence systematic review software. Melbourne, Australia; Available: www.covidence.org
- Morgan RL, Thayer KA, Santesso N, et al. A risk of bias instrument for non-randomized studies of exposures: a users' guide to its application in the context of GRADE. *Environ Int* 2019;122:168–84.
- Sterne JAC, Savović J, Page MJ, et al. RoB 2: a revised tool for assessing risk of bias in randomised trials. *BMJ* 2019;366:l4898.
- Park J. Risk of bias assessment tool for non-randomized studies (Robans): development and validation of a new instrument. In 19th Cochrane colloquium; 2011.
- Grace R, Baird K, Elcombe E, et al. Effectiveness of the volunteer family connect program in reducing isolation of vulnerable families and supporting their parenting: randomized controlled trial with intention-to-treat analysis of primary outcome variables. *JMIR Pediatr Parent* 2019;2:e13023.
- Gross D, Garvey C, Julion W, et al. Efficacy of the Chicago parent program with low-income African American and Latino parents of young children. *Prev Sci* 2009;10:54–65.
- Goodman WB, Dodge KA, Bai Y, et al. Evaluation of a family connects dissemination to four high-poverty rural counties. *Matern Child Health J* 2022;26:1067–76.
- Dugravier R, Tubach F, Saias T, et al. Impact of a manualized multifocal perinatal home-visiting program using psychologists on postnatal depression: the CAPEDP randomized controlled trial. *PLoS One* 2013;8:e72216.
- Guerrero AD, Herman A, Teutsch C, et al. Evaluation of a health education intervention to improve parental knowledge and attitudes about chronic stress and depression among head start families. *Health Promot Pract* 2023;24:261–71.
- Holtrop K, Holcomb JE. Adapting and pilot testing a parenting intervention for homeless families in transitional housing. *Fam Process* 2018;57:884–900.
- Melley AH, Kim C, Norris-Shortle C, et al. Supporting positive parenting for young children experiencing homelessness: the PACT therapeutic nursery. *Zero Three* 2010;30:39–45.
- Ristkari T, Kurki M, Suominen A, et al. Web-based parent training intervention with telephone coaching for disruptive behavior in 4-year-old children in real-world practice: implementation study. *J Med Internet Res* 2019;21:e11446.
- Rowe H, McCallum S, Le MTH, et al. Admission to day stay early parenting program is associated with improvements in mental health and infant behaviour: a prospective cohort study. *Int J Ment Health Syst* 2012;6:11.
- Foka S, Hadfield K, Pluess M, et al. Promoting well-being in refugee children: an exploratory controlled trial of a positive psychology intervention delivered in greek refugee camps. *Dev Psychopathol* 2021;33:87–95.
- Spijkers W, Jansen DE, Reijneveld SA. Effectiveness of primary care triple P on child psychosocial problems in preventive child healthcare: a randomized controlled trial. *BMC Med* 2013;11:1–8.
- Yousey Y, Leake J, Wdowik M, et al. Education in a homeless shelter to improve the nutrition of young children. *Public Health Nurs* 2007;24:249–55.
- Bürgli F, Niederer I, Schindler C, et al. Effect of a lifestyle intervention on adiposity and fitness in socially disadvantaged subgroups of preschoolers: a cluster-randomized trial (Ballabeina). *Prev Med* 2012;54:335–40.
- Webster-Stratton C. Preventing conduct problems in head start children: strengthening parenting competencies. *J Consult Clin Psychol* 1998;66:715–30.
- Forgatch MS, Patterson GR. Parent management training—oregon model: an intervention for antisocial behavior in children and adolescents; 2010.
- Fernandez MA, Eyberg SM. Predicting treatment and follow-up attrition in parent-child interaction therapy. *J Abnorm Child Psychol* 2009;37:431–41.
- Breitenstein SM, Gross D, Christophersen R. Digital delivery methods of parenting training interventions: a systematic review. *Worldviews Evid Based Nurs* 2014;11:168–76.
- Taylor TK, Webster-Stratton C, Feil EG, et al. Computer-based intervention with coaching: an example using the incredible years program. *Cogn Behav Ther* 2008;37:233–46.
- Rhoades H, Wenzel S, Rice E, et al. No digital divide? Technology use among homeless adults. *J Soc Distress Homeless* 2017;26:73–7.
- Rice E, Lee A, Taitt S. Cell phone use among homeless youth: potential for new health interventions and research. *J Urban Health* 2011;88:1175–82.
- Freedman MJ, Lester KM, McNamara C, et al. Cell phones for ecological momentary assessment with cocaine-addicted homeless patients in treatment. *J Subst Abuse Treat* 2006;30:105–11.
- Tyler KA, Schmitz RM. Using cell phones for data collection: benefits, outcomes, and intervention possibilities with homeless youth. *Child Youth Serv Rev* 2017;76:59–64.
- Griffiths KM, Christensen H, Jorm AF, et al. Effect of web-based depression literacy and cognitive-behavioural therapy interventions on stigmatising attitudes to depression: randomised controlled trial. *Br J Psychiatry* 2004;185:342–9.
- Finkelstein J, Lapshin O. Reducing depression stigma using a web-based program. *Int J Med Inform* 2007;76:726–34.
- Rodda S, Lubman DI, Dowling NA, et al. Web-based counseling for problem gambling: exploring motivations and recommendations. *J Med Internet Res* 2013;15:e99.
- Grace R. Far from ideal: everyday experiences of mothers and early childhood professionals negotiating an inclusive early childhood experience in the Australian context. *Topics Early Child Spec Educ* 2008;28:18–30.
- McMichael C, Manderson L. Somali women and well-being: social networks and social capital among immigrant women in Australia. *Hum Organ* 2004;63:88–99.



- 43 Llewellyn G, McConnell D, Cant R, *et al.* Support network of mothers with an intellectual disability: an exploratory study. *J Intellect Dev Disabil* 1999;24:7–26.
- 44 Byrne F, Grace R, Tredoux J, *et al.* Structured social relationships: a review of volunteer home visiting programs for parents of young children. *Aust Health Rev* 2016;40:262–9.
- 45 Johnson Z, Howell F, Molloy B. Community mothers' programme: randomised controlled trial of non-professional intervention in parenting. *BMJ* 1993;306:1449–52.
- 46 Deković M, Asscher JJ, Hermanns J, *et al.* Tracing changes in families who participated in the home-start parenting program: parental sense of competence as mechanism of change. *Prev Sci* 2010;11:263–74.
- 47 Paisi M, Kay E, Plessas A, *et al.* Barriers and enablers to accessing dental services for people experiencing homelessness: a systematic review. *Community Dent Oral Epidemiol* 2019;47:103–11.
- 48 King TB, Gibson G. Oral health needs and access to dental care of homeless adults in the United States: a review. *Spec Care Dentist* 2003;23:143–7.
- 49 Stormon N, Sowa PM, Anderson J, *et al.* Facilitating access to dental care for people experiencing homelessness. *JDR Clin Trans Res* 2021;6:420–9.
- 50 Goode J, Hoang H, Crocombe L. Strategies to improve access to and uptake of dental care by people experiencing homelessness in Australia: a grey literature review. *Aust Health Rev* 2020;44:297–303.
- 51 Rigby MJ. Potentially over 3 million children in EU Europe believed not to be receiving needed medical and dental treatment-and parents' reasons why. *Child Care Health Dev* 2020;46:390–6.
- 52 Dye BA, Li X, Beltran-Aguilar ED. Selected oral health indicators in the United States, 2005-2008. *NCHS Data Brief* 2012;2012:1–8.
- 53 Daniels SR. The consequences of childhood overweight and obesity. *Future Child* 2006;16:47–67.
- 54 Koh KA, Hoy JS, O'Connell JJ, *et al.* The hunger–obesity paradox: obesity in the homeless. *J Urban Health* 2012;89:952–64.
- 55 Danielzik S, Pust S, Landsberg B, *et al.* First lessons from the Kiel obesity prevention study (KOPS). *Int J Obes* 2005;29:S78–83.
- 56 Nemet D, Geva D, Eliakim A. Health promotion intervention in low socioeconomic kindergarten children. *J Pediatr* 2011;158:796–801.
- 57 Muckelbauer R, Libuda L, Clausen K, *et al.* Promotion and provision of drinking water in schools for overweight prevention: randomized, controlled cluster trial. *Pediatrics* 2009;123:e661–7.
- 58 Müller MJ, Danielzik S, Pust S. School-and family-based interventions to prevent overweight in children. *Proc Nutr Soc* 2005;64:249–54.
- 59 Spijkers W, Jansen DE, de Meer G, *et al.* Effectiveness of a parenting programme in a public health setting: a randomised controlled trial of the positive parenting programme (triple P) level 3 versus care as usual provided by the preventive child healthcare (PCH). *BMC Public Health* 2010;10:131.

Scoping Review Protocol

TITLE

Interventions to promote the health and well-being of children under 5s experiencing homelessness in high-income countries: A Scoping Review

PROTOCOL INFORMATION

Authors: All team members

Contact person: Monica Lakhanpaul

Dates: Anticipated start date of search: December 2021

Anticipated completion date: March 2022

BACKGROUND

According to the McKinney-Vento definition of homeless, "homeless children and youths" means individuals who lack a fixed, regular, and adequate night-time residence (Miller, 2009). According to the UN Office of the High Commissioner for Human Rights, homelessness has "emerged as a worldwide human rights concern," especially in high-income nation-states with the means to address it. Between 2014 and 2018, family homelessness almost doubled in Ireland, rising from 407 to over 1,600 families. Between 2006 and 2013, New Zealand had a 44% rise in family homelessness. In 2018, the United States had around 56,300 families with children, accounting for one-third of the country's homeless population (Rosenthal DM, 2021). In 2019, the charity Shelter reported that a child loses their home every 8 min in Great Britain, which is the equivalent of 183 children per day. In 2019, the overall number of children who were homeless or in temporary housing in England climbed to 126020, including 88080 in London. According to the Children's Commissioner, there might be around 210000 homeless children in temporary accommodation or couch surfing in England, as well as roughly 585000 people who are either homeless or in danger of becoming homeless.

In particular, young children aged ≤ 5 years living in temporary accommodation (U5TA) have an inconspicuous plight. There is a lack of policy supporting them since they are not on the streets as homeless. However, many U5TA have pre-existing conditions such as epilepsy, asthma, anxiety, and diabetes; they might be the most susceptible to viral infection (Rosenthal et al., 2020). Moreover, the first five years of life is a critical duration for the optimal development of the brain, especially for children who experience poverty/housing/transient lifestyle, which not only leads to many health concerns but also leads to language development and motor skills and social problems (Cusick and Georgieff, 2016).

Therefore, this scoping review was undertaken to gather existing interventions, especially for families with homeless children within themes: feeding, nutrition, care practice, parenting, dental, wellbeing and mental health, safe sleeping, physical activity, parenting support, which were already effectively conducted in other HICs. Those themes are essential to the integrated health of U5TA, and there is a complex need to include all those themes to address or alleviate the current situation of homelessness. The primary objective of this review is to examine the content and method of delivery of interventions that are culturally sensitive and accessible for the demographic that is on the crossroads of poverty/housing/transient lifestyle. Specifically, our study also aims to address and answer the following question: How best to communicate with mobile populations with poor health literacy/literacy/language barriers? Who are possible and critical points of contact? How to develop an inclusive and engaging practice with

populations in homelessness? How to create appropriate, acceptable, and accessible communication materials? (e.g., through health visitors, family nurse partnerships, etc.)

The scoping review is a core work package of the project titled, “Children in Homeless Accommodations Managing Pandemic Invisibility or Non-inclusive Strategies” to map the existing global evidence on the content and method of delivery of practical strategies and interventions to improve coverage, access, and utilization of early child health programmes in marginalized and excluded under5s.

OBJECTIVES

- O-1. To identify the evidence base available around the content of delivery of interventions programmes for families with children under 5.
- O-2. To explore the method of delivery of these interventions: when to intervene, how to intervene, entry points for crucial health concerns.
- O-3. To find out the most feasible settings in which the strategies and interventions are effective

Specific parameters that will be mapped from studies that relate to the review objectives will comprise:

- (i) Challenge area
- (ii) Settings of interventions (Content and delivery method)
- (iii) Outcome of the interventions
- (iv) Culturally accessible/appropriate for mobile populations
- (v) Scale of impact
- (vi) Economy of impact

METHODS

We will conduct a targeted systematic rapid global scoping review (supplemented by knowledge and lived experiences from international experts) using the Arksey and O'Malley framework (Levac et al., 2010)

1.1. Review Methods

1.1.1. Inclusion Criteria

1.1.1.1. **Language and Geography:** English language studies of HICs;

1.1.1.2. **Types of studies:** Studies of any design, where the study objective was to describe, measure, or evaluate the piloting or implementation of a strategy, tactics, process, and/or method targeted at improving child health programmes in High-income countries;

1.1.1.3. **Types of participants:** Studies that include interventions for under-5 children; The review will look into two qualifiers – marginalized and excluded what? Populations?. Marginalization is defined as “a process whereby something or someone is pushed to the edge of a group and accorded lesser importance.” Social exclusion is defined as “ It involves the lack or denial of resources, rights, goods and services, and the inability to participate in the normal relationships and activities, available to the majority of people in a society, whether in economic, social, cultural or political

arenas." Operationally these two terminologies have been defined to be inclusive of the following keywords:

(Marginal[Title/Abstract]) OR (Marginalised[Title/Abstract]) OR (Marginalized[Title/Abstract]) OR (Refugee[Title/Abstract]) OR (Homeless[Title/Abstract]) OR (Migrant[Title/Abstract]) OR (financial catastrophe[Title/Abstract]) OR (poverty[Title/Abstract]) OR (conflict-affected[Title/Abstract]) OR (Under attack[Title/Abstract]) OR (Displaced[Title/Abstract]) OR (Temporary Accommodation[Title/Abstract]) OR (Temporary Settlement[Title/Abstract]) OR (Temporary Housing[Title/Abstract]) OR (Transitional Settlement[Title/Abstract]) OR (Transitional shelter[Title/Abstract]) OR (Emergency shelter[Title/Abstract]) OR (Emergency accommodation[Title/Abstract]) OR (Emergency housing[Title/Abstract]) OR (Makeshift shelter[Title/Abstract]) OR (Makeshift accommodation[Title/Abstract]) OR (Slash[Title/Abstract] AND Burn Cultivation[Title/Abstract]) OR (Shifting Cultivation[Title/Abstract]) OR (Feral[Title/Abstract]))

- 1.1.1.4. **Types of intervention:** Studies that will include interventions to improve or optimize the coverage of services, accessibility of the target population, and service utilization; we will include efficacy trials that include interventions only to improve specific health conditions within themes: feeding, nutrition, care practice, parenting, dental, wellbeing, and mental health, safe sleeping, physical activity, parenting support; inclusion of any bridging study will be decided jointly by the lead reviewers and the PI based on any added value)
- 1.1.1.5. **Types of comparators:** Studies that include marginality, conflict, or inequality for overall outcome, comparison, or sub-grouping.
- 1.1.1.6. **Types of outcome measures:** Studies that measure service output (coverage, access, utilization) and health (mortality, morbidity, quality-adjusted life years, disease/disability-adjusted life years) and/or economic (efficiency, cost, return on investment);

1.1.1.7. Time of Publications: The dates searched will be from January 2000 to

FINAL SEARCH TERM (See Annexure for More Details)

((((Child[Title/Abstract] OR ((Under five[Title/Abstract] OR (Under 5[Title/Abstract])) OR (U5[Title/Abstract]))) OR ((Newborn[Title/Abstract] OR (Infant[Title/Abstract])) OR (1000 days[Title/Abstract]))) AND (((Intervention*[Title/Abstract] OR (Strateg*[Title/Abstract])) OR (Practice*[Title/Abstract]))) AND (((((((((((((((((((Vulnerable[Title/Abstract] OR (Marginal[Title/Abstract])) OR (Marginalised[Title/Abstract])) OR (Marginalized[Title/Abstract])) OR (Refugee[Title/Abstract])) OR (Homeless[Title/Abstract])) OR (Migrant[Title/Abstract])) OR (financial catastrophe[Title/Abstract])) OR (poverty[Title/Abstract])) OR (conflict-affected[Title/Abstract])) OR (Under attack[Title/Abstract])) OR (Displaced[Title/Abstract])) OR (Temporary Accommodation[Title/Abstract])) OR (Temporary Settlement[Title/Abstract])) OR (Temporary Housing[Title/Abstract])) OR (Transitional Settlement[Title/Abstract])) OR (Transitional shelter[Title/Abstract])) OR (Emergency shelter[Title/Abstract])) OR (Emergency accommodation[Title/Abstract])) OR (Emergency housing[Title/Abstract])) OR (Makeshift shelter[Title/Abstract])) OR (Makeshift accommodation[Title/Abstract])) OR (Slash[Title/Abstract] AND Burn Cultivation[Title/Abstract])) OR (Shifting Cultivation[Title/Abstract])) OR (Feral[Title/Abstract])) AND ((((((Access[Title/Abstract] OR (Accessibility[Title/Abstract])) OR (Inaccessible[Title/Abstract])) OR (inaccess[Title/Abstract])) OR ((coverage[Title/Abstract] OR (outreach[Title/Abstract])) OR (reach[Title/Abstract])) OR (((Use[Title/Abstract] OR (Usage[Title/Abstract])) OR (Utilisation[Title/Abstract])) OR (Utilization[Title/Abstract])) OR ((Available[Title/Abstract] OR (Availability[Title/Abstract]))) AND ((((((Feeding[Title/Abstract] OR (Nutrition[Title/Abstract])) OR (Care practice[Title/Abstract])) OR (Parenting[Title/Abstract])) OR ((dental[Title/Abstract] OR (wellbeing[Title/Abstract])) OR (mental health[Title/Abstract])) OR (((safe sleeping[Title/Abstract] OR (physical activity[Title/Abstract])) OR (parenting support[Title/Abstract])) OR (sleep hygiene[Title/Abstract])) OR ((sleep practice[Title/Abstract]))) AND (Andorra*[Title/Abstract] OR Antigua and Barbuda*[Title/Abstract] OR Australia*[Title/Abstract] OR Austria*[Title/Abstract] OR Bahrain*[Title/Abstract] OR Barbados*[Title/Abstract] OR Belgium*[Title/Abstract] OR Brunei*[Title/Abstract] OR Canada*[Title/Abstract] OR Chile*[Title/Abstract] OR Croatia*[Title/Abstract] OR Cyprus*[Title/Abstract] OR Czech Republic*[Title/Abstract] OR Denmark*[Title/Abstract] OR Estonia*[Title/Abstract] OR Finland*[Title/Abstract] OR France*[Title/Abstract] OR Germany*[Title/Abstract] OR Greece*[Title/Abstract] OR Hungary*[Title/Abstract] OR Iceland*[Title/Abstract] OR Israel*[Title/Abstract] OR Italy*[Title/Abstract] OR Japan*[Title/Abstract] OR South Korea*[Title/Abstract] OR Kuwait*[Title/Abstract] OR Latvia*[Title/Abstract] OR Liechtenstein*[Title/Abstract] OR Lithuania*[Title/Abstract] OR Luxembourg*[Title/Abstract] OR Monaco*[Title/Abstract] OR Nauru*[Title/Abstract] OR Netherlands*[Title/Abstract] OR New Zealand*[Title/Abstract] OR Norway*[Title/Abstract] OR Oman*[Title/Abstract] OR Palau*[Title/Abstract] OR Poland*[Title/Abstract] OR Portugal*[Title/Abstract] OR Qatar*[Title/Abstract] OR Saint Kitts and Nevis*[Title/Abstract] OR San Marino*[Title/Abstract] OR Seychelles*[Title/Abstract] OR Singapore*[Title/Abstract] OR Slovakia*[Title/Abstract] OR Slovenia*[Title/Abstract] OR Spain*[Title/Abstract] OR Sweden*[Title/Abstract] OR Switzerland*[Title/Abstract] OR Trinidad and Tobago*[Title/Abstract] OR United Arab Emirates*[Title/Abstract] OR United States*[Title/Abstract] OR Aruba*[Title/Abstract] OR Bermuda*[Title/Abstract] OR British Virgin Islands*[Title/Abstract] OR Cayman Islands*[Title/Abstract] OR Cook Islands*[Title/Abstract] OR Curaçao*[Title/Abstract] OR Faroe Islands*[Title/Abstract] OR French Polynesia*[Title/Abstract] OR Gibraltar*[Title/Abstract] OR Greenland*[Title/Abstract] OR Guam*[Title/Abstract] OR Hong Kong*[Title/Abstract] OR Isle of Man*[Title/Abstract] OR New Caledonia*[Title/Abstract] OR Northern Mariana Islands*[Title/Abstract] OR Puerto Rico*[Title/Abstract] OR Saint Martin*[Title/Abstract] OR Taiwan*[Title/Abstract] OR Turks and Caicos Islands*[Title/Abstract] OR U.S. Virgin Islands*[Title/Abstract])AND ((("2000/01/01"[Date - Publication] : "3000"[Date - Publication]))

December 2021.

1.1.2. Search Database

1.1.2.1. Electronic Database:

- i. Databases: PubMed, MEDLINE, SCOPUS, The Cochrane Library (Cochrane Database of Systematic Reviews, Cochrane Central Register of Controlled Trials [CENTRAL]), and Google Scholar.
- ii. Clinical trial registries: ClinicalTrials.gov, Current Controlled Trials meta Register of Controlled Trials, International Clinical Trials Registry Platform (ICTRP) and.

1.1.2.2. Grey literature: Conference abstracts, Third Sector Reports.

1.1.2.3. Correspondence: Experts from Donor/ Philanthropic organizations and other key experts selected for an interview will be contacted for any additional published or unpublished work.

1.1.3. Relational and Citation Search:

We will conduct snowballing to screen cited articles of the 1st iteration of selections, followed by citations and related articles for each inclusion in PubMed, Google Scholar, and PubMed respectively. A maximum of three iterations will be undertaken.

1.1.4. DATA COLLECTION

- 1.1.4.1. **Screening Tool and Selection Method:** All articles will be extracted and compiled in a single spreadsheet. The spreadsheet will be equipped with duplicate study filters, and inclusion filters (inclusion criteria not managed through Search Term)

| Screening Filters |
|--|
| <p>Geography: High income countries (HICs) (Inclusion) Types of Emergency: Grade 1, Grade 2, Grade 3 emergencies (WHO), Age of Target Population: 0-1 (inclusion), 1-5 (inclusion), 5-14 (Exclusion) Interventions: Interventions on access, coverage, utilization of health services; (inclusion) Measurements: Output, outcome, impact (inclusion) input, process (exclusion)</p> |

and selection columns. Inclusion filters will be filled in independently by one reviewer (YT). Selection filters will be applied independently by two reviewers (YT and KS). All studies selected by two reviewers will be included. All studies rejected by two reviewers will be rejected. All studies having one inclusion will be marked as disputed selection. In case of dispute in selection third expert reviewer (ML) will make the final inclusion decision.

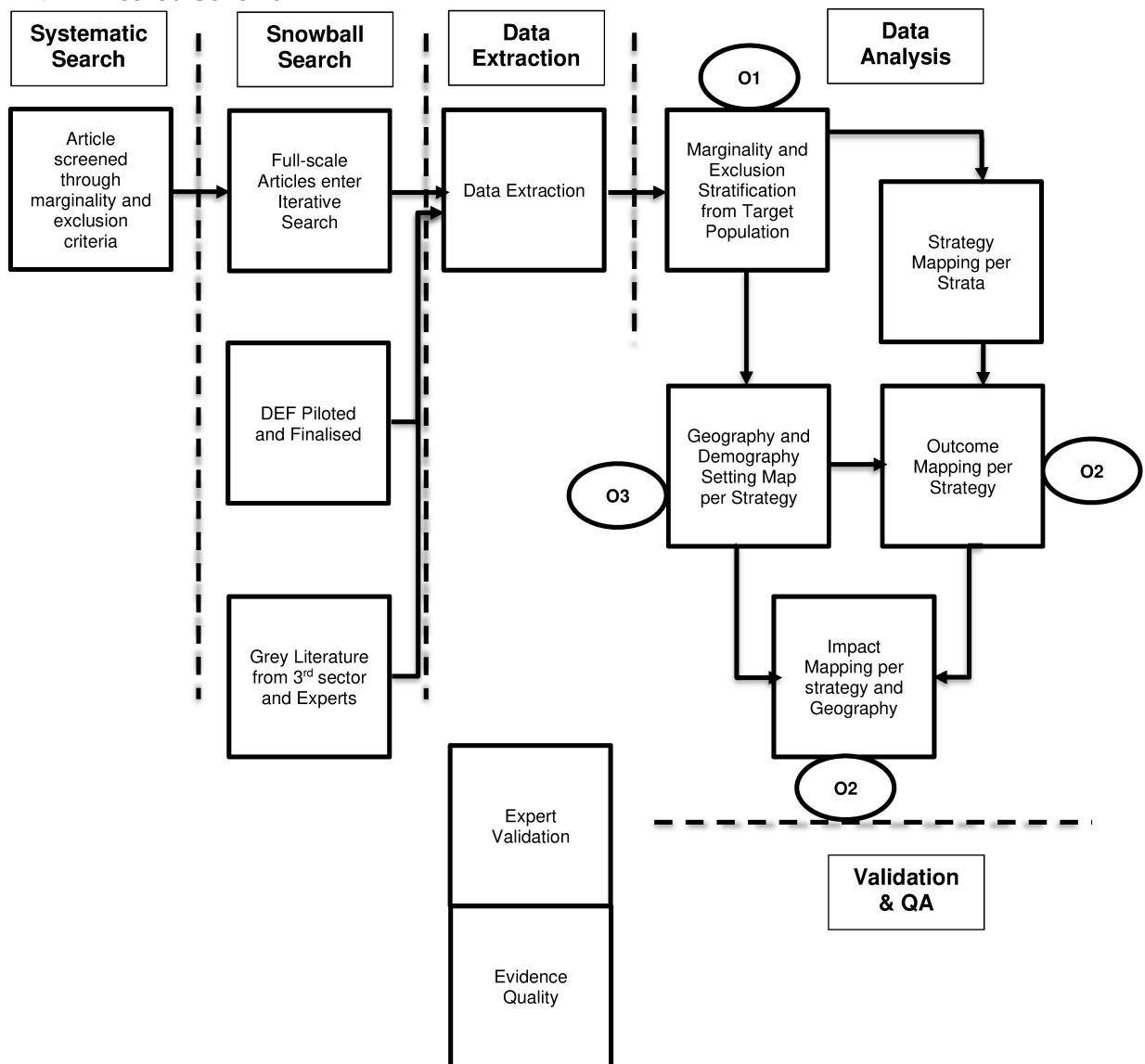
- 1.1.4.2. **Rounds of Screening:** Two round of screening will be undertaken– Title-Abstract (TiAb) and Full Text (FT).
- 1.1.4.3. **Preferred Reporting Items for Systematic Reviews and Meta-Analyses (PRISMA) Compliance:** The reasons for exclusion will be recorded and mapped in a flow chart as per PRISMA guidelines.
- 1.1.4.4. **Data Extraction:** A data extraction form (DEF) will be developed as per CEB Critically Appraised Topics (CAT) guidelines by KS and piloted by two authors (YT and KS) on the first 6 article inclusions (3 each). The piloting will essentially inform whether the DEF can extract necessary and sufficient information as per the objectives set. Any queries raised by the pilot will be reviewed by ML, NS, and ZP. The form will be amended based on the pilot. Two reviewers (YT and KS) will use the finalized form to extract data from full-text articles. If clarification is required, a domain expert (NS, YP, ML) will be consulted.
- 1.1.5. **Assessment of Risk of Bias (RoB):** RoB assessment will only be used for interventional studies for which results will be used for quantitative analysis or pooling. We will use multiple tools for risk of bias assessment based on the study type–
- i. Systematic Reviews: **GRADE** for bias due to selective publication and selective non-reporting for systematic reviews
 - ii. Randomized Trials: **Cochrane RoB 2.0** to assess multiple sources of bias
 - iii. Non-randomised studies of interventions: **RoBANS** for bias due to selective non-reporting and bias in the selection of the reported result.
- 1.1.6. **Critical Appraisal for the included studies:** All studies will be critically appraised as per the CAT grading.
- 1.2. **Strategy for data synthesis**

The set of evidence will be categorized into qualitative, quantitative and mixed method. The qualitative evidence will be coded to find qualifiers through Word Cloud. The quantitative evidence will be subjected to descriptive analysis, followed by meta-analysis if possible.

- 1.3. **Referencing Software:** ENDNOTE
 1.4. **Quality Assessment**

https://www.who.int/hrh/retention/annex1_grade_evidence_profiles.pdf

1.5. Method Schema



ANNEXURE

Search Strategy

| Search number | Query | Sort By | Filters | Search Details | Results | Time |
|---------------|--|---------|---------|--|---------|---------|
| 18 | (("2000/01/01"[Date - Publication] : "3000/12/31"[Date - Publication])) AND (((((((("child"[Title/Abstract] OR "under five"[Title/Abstract] OR "under 5"[Title/Abstract] OR "U5"[Title/Abstract]) OR ("Newborn"[Title/Abstract] OR "Infant"[Title/Abstract] OR "1000 days"[Title/Abstract]) AND ("intervention"[Title/Abstract] OR "strategy"[Title/Abstract] OR "practice"[Title/Abstract]) AND ("Vulnerable"[Title/Abstract] OR "Marginal"[Title/Abstract] OR "Marginalised"[Title/Abstract] OR "Marginalized"[Title/Abstract] OR "Refugee"[Title/Abstract] OR "Homeless"[Title/Abstract] OR "Migrant"[Title/Abstract] OR "financial catastrophe"[Title/Abstract] OR "poverty"[Title/Abstract] OR "conflict-affected"[Title/Abstract] OR ("Under"[All Fields] OR "attack"[Title/Abstract] OR "Displaced"[Title/Abstract] OR "temporary accommodation"[Title/Abstract] OR "temporary settlement"[Title/Abstract] OR "temporary housing"[Title/Abstract] OR ("transit"[All Fields] OR "transited"[All Fields] OR "transiting"[All Fields] OR "transition"[All Fields] OR "Transitional"[All Fields] OR "transitionals"[All Fields] OR "transitioned"[All Fields] OR "transitioning"[All Fields] OR "transitions"[All Fields] OR "transits"[All Fields]) OR "Settlement"[Title/Abstract] OR "transitional shelter"[Title/Abstract] OR "emergency shelter"[Title/Abstract] OR "emergency accommodation"[Title/Abstract] OR "emergency housing"[Title/Abstract] OR ("Makeshift"[All Fields] OR "shelter"[Title/Abstract]) OR ("Makeshift"[All Fields] OR "Accommodation"[Title/Abstract] OR ("Slash"[Title/Abstract] OR "burn cultivation"[Title/Abstract] OR "shifting cultivation"[Title/Abstract] OR "Feral"[Title/Abstract] AND (((("Access"[Title/Abstract] OR "Accessibility"[Title/Abstract] OR "Inaccessible"[Title/Abstract] OR "inaccess"[Title/Abstract] OR ("coverage"[Title/Abstract] OR "outreach"[Title/Abstract] OR "reach"[Title/Abstract])) OR ("Use"[Title/Abstract] OR "Usage"[Title/Abstract] OR "Utilisation"[Title/Abstract] OR "Utilization"[Title/Abstract])) OR ("Available"[Title/Abstract] OR | | | ("child"[Title/Abstract] OR ("under five"[Title/Abstract] OR "under 5"[Title/Abstract] OR "U5"[Title/Abstract]) OR ("Newborn"[Title/Abstract] OR "Infant"[Title/Abstract] OR "1000 days"[Title/Abstract]) AND ("intervention"[Title/Abstract] OR "strategy"[Title/Abstract] OR "practice"[Title/Abstract]) AND ("Vulnerable"[Title/Abstract] OR "Marginal"[Title/Abstract] OR "Marginalised"[Title/Abstract] OR "Marginalized"[Title/Abstract] OR "Refugee"[Title/Abstract] OR "Homeless"[Title/Abstract] OR "Migrant"[Title/Abstract] OR "financial catastrophe"[Title/Abstract] OR "poverty"[Title/Abstract] OR "conflict-affected"[Title/Abstract] OR ("Under"[All Fields] OR "attack"[Title/Abstract] OR "Displaced"[Title/Abstract] OR "temporary accommodation"[Title/Abstract] OR "temporary settlement"[Title/Abstract] OR "temporary housing"[Title/Abstract] OR ("transit"[All Fields] OR "transited"[All Fields] OR "transiting"[All Fields] OR "transition"[All Fields] OR "Transitional"[All Fields] OR "transitionals"[All Fields] OR "transitioned"[All Fields] OR "transitioning"[All Fields] OR "transitions"[All Fields] OR "transits"[All Fields]) AND "Settlement"[Title/Abstract]) OR "transitional shelter"[Title/Abstract] OR "emergency shelter"[Title/Abstract] OR "emergency accommodation"[Title/Abstract] OR "emergency housing"[Title/Abstract] OR ("Makeshift"[All Fields] AND "shelter"[Title/Abstract]) OR ("Makeshift"[All Fields] AND "Accommodation"[Title/Abstract] OR "Slash"[Title/Abstract] OR "burn cultivation"[Title/Abstract] OR "shifting cultivation"[Title/Abstract] OR "Feral"[Title/Abstract] AND (((("Access"[Title/Abstract] OR "Accessibility"[Title/Abstract] OR "Inaccessible"[Title/Abstract] OR "inaccess"[Title/Abstract] OR ("coverage"[Title/Abstract] OR "outreach"[Title/Abstract] OR "reach"[Title/Abstract])) OR ("Use"[Title/Abstract] OR "Usage"[Title/Abstract] OR "Utilisation"[Title/Abstract] OR "Utilization"[Title/Abstract])) OR ("Available"[Title/Abstract] OR | 523 | 2:33:18 |

| | | | | |
|--|--|--|--|--|
| | <p>"Availability"[Title/Abstract])) AND ((Feeding*[Title/Abstract] OR (nutrition*[Title/Abstract] OR (care practice*[Title/Abstract] OR (parenting*[Title/Abstract] OR (dental*[Title/Abstract] OR (wellbeing*[Title/Abstract] OR (mental health*[Title/Abstract] OR (safe sleeping*[Title/Abstract] OR (physical activity*[Title/Abstract] OR (parenting support*[Title/Abstract] OR (sleep hygiene*[Title/Abstract] OR (physical activity*[Title/Abstract]))) AND (Andorra*[Title/Abstract] OR Antigua and Barbuda*[Title/Abstract] OR Australia*[Title/Abstract] OR Austria*[Title/Abstract] OR Bahrain*[Title/Abstract] OR Barbados*[Title/Abstract] OR Belgium*[Title/Abstract] OR Brunei*[Title/Abstract] OR Canada*[Title/Abstract] OR Chile*[Title/Abstract] OR Croatia*[Title/Abstract] OR Cyprus*[Title/Abstract] OR Czech Republic*[Title/Abstract] OR Denmark*[Title/Abstract] OR Estonia*[Title/Abstract] OR Finland*[Title/Abstract] OR France*[Title/Abstract] OR Germany*[Title/Abstract] OR Greece*[Title/Abstract] OR Hungary*[Title/Abstract] OR Iceland*[Title/Abstract] OR Israel*[Title/Abstract] OR Italy*[Title/Abstract] OR Japan*[Title/Abstract] OR South Korea*[Title/Abstract] OR Kuwait*[Title/Abstract] OR Latvia*[Title/Abstract] OR Liechtenstein*[Title/Abstract] OR Lithuania*[Title/Abstract] OR Luxembourg*[Title/Abstract] OR Monaco*[Title/Abstract] OR Nauru*[Title/Abstract] OR Netherlands*[Title/Abstract] OR New Zealand*[Title/Abstract] OR Norway*[Title/Abstract] OR Oman*[Title/Abstract] OR Palau*[Title/Abstract] OR Poland*[Title/Abstract] OR Portugal*[Title/Abstract] OR Qatar*[Title/Abstract] OR Saint Kitts and Nevis*[Title/Abstract] OR San Marino*[Title/Abstract] OR Seychelles*[Title/Abstract] OR Singapore*[Title/Abstract] OR Slovakia*[Title/Abstract] OR Slovenia*[Title/Abstract] OR Spain*[Title/Abstract] OR Sweden*[Title/Abstract] OR Switzerland*[Title/Abstract] OR Trinidad and Tobago*[Title/Abstract] OR United Arab Emirates*[Title/Abstract] OR United States*[Title/Abstract] OR Aruba*[Title/Abstract] OR Bermuda*[Title/Abstract] OR British Virgin Islands*[Title/Abstract] OR Cayman Islands*[Title/Abstract] OR Cook Islands*[Title/Abstract] OR Curaçao*[Title/Abstract] OR Faroe Islands*[Title/Abstract] OR French Polynesia*[Title/Abstract] OR</p> | | <p>AND "Accommodation"[Title/Abstract] OR ("Slash"[Title/Abstract] AND "burn cultivation"[Title/Abstract] OR "shifting cultivation"[Title/Abstract] OR "Feral"[Title/Abstract]) AND ("Access"[Title/Abstract] OR "Accessibility"[Title/Abstract] OR "Inaccessible"[Title/Abstract] OR "inaccess"[Title/Abstract] OR ("coverage"[Title/Abstract] OR "outreach"[Title/Abstract] OR "reach"[Title/Abstract] OR ("Use"[Title/Abstract] OR "Usage"[Title/Abstract] OR "Utilisation"[Title/Abstract] OR "Utilization"[Title/Abstract] OR ("Available"[Title/Abstract] OR "Availability"[Title/Abstract])) AND (Feeding*[Title/Abstract]) OR (nutrition*[Title/Abstract]) OR (care practice*[Title/Abstract]) OR (parenting*[Title/Abstract]) OR (dental*[Title/Abstract]) OR (wellbeing*[Title/Abstract]) OR (mental health*[Title/Abstract]) OR (safe sleeping*[Title/Abstract]) OR (physical activity*[Title/Abstract]) OR (parenting support*[Title/Abstract]) OR (sleep hygiene*[Title/Abstract]) OR (physical activity*[Title/Abstract]) AND (Andorra*[Title/Abstract] OR Antigua and Barbuda*[Title/Abstract] OR Australia*[Title/Abstract] OR Austria*[Title/Abstract] OR Bahrain*[Title/Abstract] OR Barbados*[Title/Abstract] OR Belgium*[Title/Abstract] OR Brunei*[Title/Abstract] OR Canada*[Title/Abstract] OR Chile*[Title/Abstract] OR Croatia*[Title/Abstract] OR Cyprus*[Title/Abstract] OR Czech Republic*[Title/Abstract] OR</p> | |
|--|--|--|--|--|

| | | | | | |
|--|---|--|--|--|--|
| | <p>Gibraltar*[Title/Abstract] OR Greenland*[Title/Abstract] OR Guam*[Title/Abstract] OR Hong Kong*[Title/Abstract] OR Isle of Man*[Title/Abstract] OR New Caledonia*[Title/Abstract] OR Northern Mariana Islands*[Title/Abstract] OR Puerto Rico*[Title/Abstract] OR Saint Martin*[Title/Abstract] OR Taiwan*[Title/Abstract] OR Turks and Caicos Islands*[Title/Abstract] OR U.S. Virgin Islands*[Title/Abstract])</p> | | <p>Denmark*[Title/Abstract] OR Estonia*[Title/Abstract] OR Finland*[Title/Abstract] OR France*[Title/Abstract] OR Germany*[Title/Abstract] OR Greece*[Title/Abstract] OR Hungary*[Title/Abstract] OR Iceland*[Title/Abstract] OR Israel*[Title/Abstract] OR Italy*[Title/Abstract] OR Japan*[Title/Abstract] OR South Korea*[Title/Abstract] OR Kuwait*[Title/Abstract] OR Latvia*[Title/Abstract] OR Liechtenstein*[Title/Abstract] OR Lithuania*[Title/Abstract] OR Luxembourg*[Title/Abstract] OR Monaco*[Title/Abstract] OR Nauru*[Title/Abstract] OR Netherlands*[Title/Abstract] OR New Zealand*[Title/Abstract] OR Norway*[Title/Abstract] OR Oman*[Title/Abstract] OR Palau*[Title/Abstract] OR Poland*[Title/Abstract] OR Portugal*[Title/Abstract] OR Qatar*[Title/Abstract] OR Saint Kitts and Nevis*[Title/Abstract] OR San Marino*[Title/Abstract] OR Seychelles*[Title/Abstract] OR Singapore*[Title/Abstract] OR Slovakia*[Title/Abstract] OR Slovenia*[Title/Abstract] OR Spain*[Title/Abstract] OR Sweden*[Title/Abstract] OR Switzerland*[Title/Abstract] OR Trinidad and Tobago*[Title/Abstract] OR United Arab Emirates*[Title/Abstract] OR United States*[Title/Abstract] OR Aruba*[Title/Abstract] OR Bermuda*[Title/Abstract] OR British Virgin Islands*[Title/Abstract] OR Cayman Islands*[Title/Abstract] OR Cook Islands*[Title/Abstract] OR Curaçao*[Title/Abstract] OR Faroe Islands*[Title/Abstract] OR French Polynesia*[Title/Abstract] OR Gibraltar*[Title/Abstract] OR Greenland*[Title/Abstract] OR Guam*[Title/Abstract] OR Hong Kong*[Title/Abstract] OR</p> | | |
|--|---|--|--|--|--|

| | | | | | | |
|--|--|--|--|--|--|--|
| | | | | Isle of Man*[Title/Abstract] OR New Caledonia*[Title/Abstract] OR Northern Mariana Islands*[Title/Abstract] OR Puerto Rico*[Title/Abstract] OR Saint Martin*[Title/Abstract] OR Taiwan*[Title/Abstract] OR Turks and Caicos Islands*[Title/Abstract] OR U.S. Virgin Islands*[Title/Abstract]))AN D 2010/01/01:3000/12/31[Dat e - Publication] | | |
|--|--|--|--|--|--|--|

| | | | | | |
|----|--|--|--|-----|-------------|
| 17 | <p>(((((("child"[Title/Abstract] OR ("under five"[Title/Abstract] OR "under 5"[Title/Abstract] OR "U5"[Title/Abstract])) OR ("Newborn"[Title/Abstract] OR "Infant"[Title/Abstract] OR "1000 days"[Title/Abstract])) AND ("intervention"[Title/Abstract] OR "strategy"[Title/Abstract] OR "practice"[Title/Abstract])) AND ("Vulnerable"[Title/Abstract] OR "Marginal"[Title/Abstract] OR "Marginalised"[Title/Abstract] OR "Marginalized"[Title/Abstract] OR "Refugee"[Title/Abstract] OR "Homeless"[Title/Abstract] OR "Migrant"[Title/Abstract] OR "financial catastrophe"[Title/Abstract] OR "poverty"[Title/Abstract] OR "conflict- affected"[Title/Abstract] OR ("Under"[All Fields] OR "attack"[Title/Abstract] OR "Displaced"[Title/Abstract] OR "temporary accommodation"[Title/Abstract] OR "temporary settlement"[Title/Abstract] OR "temporary housing"[Title/Abstract] OR (("transit"[All Fields] OR "transited"[All Fields] OR "transiting"[All Fields] OR "transition"[All Fields] OR "Transitional"[All Fields] OR "transitionals"[All Fields] OR "transitioned"[All Fields] OR "transitioning"[All Fields] OR "transitions"[All Fields] OR "transits"[All Fields]) OR "Settlement"[Title/Abstract] OR "transitional shelter"[Title/Abstract] OR "emergency shelter"[Title/Abstract] OR "emergency accommodation"[Title/Abstract] OR "emergency housing"[Title/Abstract] OR ("Makeshift"[All Fields] OR "shelter"[Title/Abstract] OR ("Makeshift"[All Fields] OR "Accommodation"[Title/Abstract]) OR ("Slash"[Title/Abstract] OR "burn cultivation"[Title/Abstract] OR "shifting cultivation"[Title/Abstract] OR "Feral"[Title/Abstract]) AND (((("Access"[Title/Abstract] OR "Accessibility"[Title/Abstract] OR "Inaccessible"[Title/Abstract] OR "inaccess"[Title/Abstract] OR ("coverage"[Title/Abstract] OR "outreach"[Title/Abstract] OR "reach"[Title/Abstract])) OR ("Use"[Title/Abstract] OR "Usage"[Title/Abstract] OR "Utilisation"[Title/Abstract] OR "Utilization"[Title/Abstract])) OR ("Available"[Title/Abstract] OR "Availability"[Title/Abstract])))) AND ((Feeding*[Title/Abstract] OR (nutrition*[Title/Abstract] OR (care practice*[Title/Abstract] OR parenting*[Title/Abstract] OR dental*[Title/Abstract] OR (wellbeing*[Title/Abstract] OR (mental health*[Title/Abstract] OR (safe sleeping*[Title/Abstract] OR (physical activity*[Title/Abstract] OR</p> | | <p>((("child"[Title/Abstract] OR ("under five"[Title/Abstract] OR "under 5"[Title/Abstract] OR "U5"[Title/Abstract]) OR ("Newborn"[Title/Abstract] OR "Infant"[Title/Abstract] OR "1000 days"[Title/Abstract])) AND ("intervention"[Title/Abstra ct] OR "strategy"[Title/Abstract] OR "practice"[Title/Abstract]) AND ("Vulnerable"[Title/Abstrac t] OR "Marginal"[Title/Abstract] OR "Marginalised"[Title/Abstra ct] OR "Marginalized"[Title/Abstra ct] OR "Refugee"[Title/Abstract] OR "Homeless"[Title/Abstract] OR "Migrant"[Title/Abstract] OR "financial catastrophe"[Title/Abstract] OR "poverty"[Title/Abstract] OR "conflict- affected"[Title/Abstract] OR ("Under"[All Fields] AND "attack"[Title/Abstract] OR "Displaced"[Title/Abstract] OR "temporary accommodation"[Title/Abstr act] OR "temporary settlement"[Title/Abstract] OR "temporary housing"[Title/Abstract] OR (("transit"[All Fields] OR "transited"[All Fields] OR "transiting"[All Fields] OR "transition"[All Fields] OR "Transitional"[All Fields] OR "transitionals"[All Fields] OR "transitioned"[All Fields] OR "transitioning"[All Fields] OR "transitions"[All Fields] OR "transits"[All Fields]) AND "Settlement"[Title/Abstract]) OR "transitional shelter"[Title/Abstract] OR "emergency shelter"[Title/Abstract] OR "emergency accommodation"[Title/Abstr act] OR "emergency housing"[Title/Abstract] OR ("Makeshift"[All Fields] AND "shelter"[Title/Abstract]) OR ("Makeshift"[All Fields] AND "Accommodation"[Title/Abstr act] OR ("Slash"[Title/Abstract] AND "burn cultivation"[Title/Abstract]) OR "shifting cultivation"[Title/Abstract]</p> | 642 | 2:32:4 8 |
|----|--|--|--|-----|-------------|

| | | | | | |
|--|--|--|---|--|--|
| | <p>(parenting support*[Title/Abstract]) OR (sleep hygiene*[Title/Abstract]) OR (physical activity*[Title/Abstract])) AND (Andorra*[Title/Abstract] OR Antigua and Barbuda*[Title/Abstract] OR Australia*[Title/Abstract] OR Austria*[Title/Abstract] OR Bahrain*[Title/Abstract] OR Barbados*[Title/Abstract] OR Belgium*[Title/Abstract] OR Brunei*[Title/Abstract] OR Canada*[Title/Abstract] OR Chile*[Title/Abstract] OR Croatia*[Title/Abstract] OR Cyprus*[Title/Abstract] OR Czech Republic*[Title/Abstract] OR Denmark*[Title/Abstract] OR Estonia*[Title/Abstract] OR Finland*[Title/Abstract] OR France*[Title/Abstract] OR Germany*[Title/Abstract] OR Greece*[Title/Abstract] OR Hungary*[Title/Abstract] OR Iceland*[Title/Abstract] OR Israel*[Title/Abstract] OR Italy*[Title/Abstract] OR Japan*[Title/Abstract] OR South Korea*[Title/Abstract] OR Kuwait*[Title/Abstract] OR Latvia*[Title/Abstract] OR Liechtenstein*[Title/Abstract] OR Lithuania*[Title/Abstract] OR Luxembourg*[Title/Abstract] OR Monaco*[Title/Abstract] OR Nauru*[Title/Abstract] OR Netherlands*[Title/Abstract] OR New Zealand*[Title/Abstract] OR Norway*[Title/Abstract] OR Oman*[Title/Abstract] OR Palau*[Title/Abstract] OR Poland*[Title/Abstract] OR Portugal*[Title/Abstract] OR Qatar*[Title/Abstract] OR Saint Kitts and Nevis*[Title/Abstract] OR San Marino*[Title/Abstract] OR Seychelles*[Title/Abstract] OR Singapore*[Title/Abstract] OR Slovakia*[Title/Abstract] OR Slovenia*[Title/Abstract] OR Spain*[Title/Abstract] OR Sweden*[Title/Abstract] OR Switzerland*[Title/Abstract] OR Trinidad and Tobago*[Title/Abstract] OR United Arab Emirates*[Title/Abstract] OR United States*[Title/Abstract] OR Aruba*[Title/Abstract] OR Bermuda*[Title/Abstract] OR British Virgin Islands*[Title/Abstract] OR Cayman Islands*[Title/Abstract] OR Cook Islands*[Title/Abstract] OR Curaçao*[Title/Abstract] OR Faroe Islands*[Title/Abstract] OR French Polynesia*[Title/Abstract] OR Gibraltar*[Title/Abstract] OR Greenland*[Title/Abstract] OR Guam*[Title/Abstract] OR Hong Kong*[Title/Abstract] OR Isle of Man*[Title/Abstract] OR New Caledonia*[Title/Abstract] OR Northern Mariana Islands*[Title/Abstract] OR Puerto Rico*[Title/Abstract] OR Saint Martin*[Title/Abstract] OR</p> | | <p>OR "Feral"[Title/Abstract]) AND ("Access"[Title/Abstract] OR "Accessibility"[Title/Abstract] OR "Inaccessible"[Title/Abstract] OR "inaccess"[Title/Abstract] OR ("coverage"[Title/Abstract] OR "outreach"[Title/Abstract] OR "reach"[Title/Abstract] OR ("Use"[Title/Abstract] OR "Usage"[Title/Abstract] OR "Utilisation"[Title/Abstract] OR "Utilization"[Title/Abstract] OR ("Available"[Title/Abstract] OR "Availability"[Title/Abstract])) AND (Feeding*[Title/Abstract]) OR (nutrition*[Title/Abstract]) OR (care practice*[Title/Abstract]) OR (parenting*[Title/Abstract]) OR (dental*[Title/Abstract]) OR (wellbeing*[Title/Abstract]) OR (mental health*[Title/Abstract]) OR (safe sleeping*[Title/Abstract]) OR (physical activity*[Title/Abstract]) OR (parenting support*[Title/Abstract]) OR (sleep hygiene*[Title/Abstract]) OR (physical activity*[Title/Abstract]) AND (Andorra*[Title/Abstract] OR Antigua and Barbuda*[Title/Abstract] OR Australia*[Title/Abstract] OR Austria*[Title/Abstract] OR Bahrain*[Title/Abstract] OR Barbados*[Title/Abstract] OR Belgium*[Title/Abstract] OR Brunei*[Title/Abstract] OR Canada*[Title/Abstract] OR Chile*[Title/Abstract] OR Croatia*[Title/Abstract] OR Cyprus*[Title/Abstract] OR Czech Republic*[Title/Abstract] OR Denmark*[Title/Abstract] OR Estonia*[Title/Abstract] OR Finland*[Title/Abstract] OR France*[Title/Abstract] OR Germany*[Title/Abstract] OR Greece*[Title/Abstract] OR</p> | | |
|--|--|--|---|--|--|

| | | | | | |
|--|---|--|---|--|--|
| | Taiwan*[Title/Abstract] OR Turks and Caicos Islands*[Title/Abstract] OR U.S. Virgin Islands*[Title/Abstract]) | | Hungary*[Title/Abstract] OR Iceland*[Title/Abstract] OR Israel*[Title/Abstract] OR Italy*[Title/Abstract] OR Japan*[Title/Abstract] OR South Korea*[Title/Abstract] OR Kuwait*[Title/Abstract] OR Latvia*[Title/Abstract] OR Liechtenstein*[Title/Abstract] OR Lithuania*[Title/Abstract] OR Luxembourg*[Title/Abstract] OR Monaco*[Title/Abstract] OR Nauru*[Title/Abstract] OR Netherlands*[Title/Abstract] OR New Zealand*[Title/Abstract] OR Norway*[Title/Abstract] OR Oman*[Title/Abstract] OR Palau*[Title/Abstract] OR Poland*[Title/Abstract] OR Portugal*[Title/Abstract] OR Qatar*[Title/Abstract] OR Saint Kitts and Nevis*[Title/Abstract] OR San Marino*[Title/Abstract] OR Seychelles*[Title/Abstract] OR Singapore*[Title/Abstract] OR Slovakia*[Title/Abstract] OR Slovenia*[Title/Abstract] OR Spain*[Title/Abstract] OR Sweden*[Title/Abstract] OR Switzerland*[Title/Abstract] OR Trinidad and Tobago*[Title/Abstract] OR United Arab Emirates*[Title/Abstract] OR United States*[Title/Abstract] OR Aruba*[Title/Abstract] OR Bermuda*[Title/Abstract] OR British Virgin Islands*[Title/Abstract] OR Cayman Islands*[Title/Abstract] OR Cook Islands*[Title/Abstract] OR Curaçao*[Title/Abstract] OR Faroe Islands*[Title/Abstract] OR French Polynesia*[Title/Abstract] OR Gibraltar*[Title/Abstract] OR Greenland*[Title/Abstract] OR Guam*[Title/Abstract] OR Hong Kong*[Title/Abstract] OR Isle of Man*[Title/Abstract] OR New Caledonia*[Title/Abstract] OR Northern Mariana Islands*[Title/Abstract] OR Puerto Rico*[Title/Abstract] OR Saint Martin*[Title/Abstract] OR | | |
|--|---|--|---|--|--|

| | | | | | | |
|--|--|--|--|---|--|--|
| | | | | Taiwan*[Title/Abstract] OR Turks and Caicos Islands*[Title/Abstract] OR U.S. Virgin Islands*[Title/Abstract]) | | |
|--|--|--|--|---|--|--|

| | | | | | |
|----|---|--|--|--|--|
| 16 | <p>(((((Child*[Title/Abstract] OR (((Under five[Title/Abstract] OR (Under 5[Title/Abstract])) OR (U5[Title/Abstract]))) OR (((Newborn[Title/Abstract] OR (Infant[Title/Abstract])) OR (1000 days[Title/Abstract]))) AND (((Intervention*[Title/Abstract] OR (Strategy*[Title/Abstract])) OR (Practice*[Title/Abstract]))) AND ((((((((((((((((((((((((Vulnerable[Title/A bstract]) OR (Marginal[Title/Abstract])) OR (Marginalised[Title/Abstract])) OR (Marginalized[Title/Abstract])) OR (Refugee[Title/Abstract])) OR (Homeless[Title/Abstract])) OR (Migrant[Title/Abstract])) OR (financial catastrophe[Title/Abstract])) OR (poverty[Title/Abstract])) OR (conflict-affected[Title/Abstract])) OR (Under attack[Title/Abstract])) OR (Displaced[Title/Abstract])) OR (Temporary Accommodation[Title/Abstract])) OR (Temporary Settlement[Title/Abstract])) OR (Temporary Housing[Title/Abstract])) OR (Transitional Settlement[Title/Abstract])) OR (Transitional shelter[Title/Abstract])) OR (Emergency shelter[Title/Abstract])) OR (Emergency accommodation[Title/Abstract])) OR (Emergency housing[Title/Abstract])) OR (Makeshift shelter[Title/Abstract])) OR (Makeshift accommodation[Title/Abstract])) OR (Slash[Title/Abstract] AND Burn Cultivation[Title/Abstract])) OR (Shifting Cultivation[Title/Abstract])) OR (Feral[Title/Abstract])) AND ((((((Access[Title/Abstract] OR (Accessibility[Title/Abstract])) OR (Inaccessible[Title/Abstract])) OR (inaccess[Title/Abstract])) OR (((coverage[Title/Abstract] OR (outreach[Title/Abstract])) OR (reach[Title/Abstract])) OR (((Use[Title/Abstract] OR (Usage[Title/Abstract])) OR (Utilisation[Title/Abstract])) OR (Utilization[Title/Abstract])) OR ((Available[Title/Abstract] OR (Availability[Title/Abstract]))) AND ((((((Feeding[Title/Abstract] OR (Nutrition[Title/Abstract])) OR (Care practice[Title/Abstract])) OR (Parenting[Title/Abstract])) OR ((dental[Title/Abstract] OR (wellbeing[Title/Abstract])) OR (mental health[Title/Abstract])) OR (((safe sleeping[Title/Abstract] OR (physical activity[Title/Abstract])) OR (parenting support[Title/Abstract])) OR (sleep hygiene[Title/Abstract])) OR ((sleep practice[Title/Abstract])))</p> | | <p>("child*[Title/Abstract] OR ("under five"[Title/Abstract] OR "under 5"[Title/Abstract] OR "U5"[Title/Abstract]) OR ("Newborn"[Title/Abstract] OR "Infant"[Title/Abstract] OR "1000 days"[Title/Abstract])) AND ("intervention*"[Title/Abstra ct] OR "strategy*"[Title/Abstract] OR "practice*"[Title/Abstract]) AND ("Vulnerable"[Title/Abstract] OR "Marginal"[Title/Abstract] OR "Marginalised"[Title/Abstra ct] OR "Marginalized"[Title/Abstra ct] OR "Refugee"[Title/Abstract] OR "Homeless"[Title/Abstract] OR "Migrant"[Title/Abstract] OR "financial catastrophe"[Title/Abstract] OR "poverty"[Title/Abstract] OR "conflict- affected"[Title/Abstract] OR ("Under"[All Fields] AND "attack"[Title/Abstract]) OR "Displaced"[Title/Abstract] OR "temporary accommodation"[Title/Abstr act] OR "temporary settlement"[Title/Abstract] OR "temporary housing"[Title/Abstract] OR (("transit"[All Fields] OR "transited"[All Fields] OR "transiting"[All Fields] OR "transition"[All Fields] OR "Transitional"[All Fields] OR "transitionals"[All Fields] OR "transitioned"[All Fields] OR "transitioning"[All Fields] OR "transitions"[All Fields] OR "transits"[All Fields]) AND "Settlement"[Title/Abstract]) OR "transitional shelter"[Title/Abstract] OR "emergency shelter"[Title/Abstract] OR "emergency accommodation"[Title/Abstr act] OR "emergency housing"[Title/Abstract] OR ("Makeshift"[All Fields] AND "shelter"[Title/Abstract]) OR ("Makeshift"[All Fields] AND "Accommodation"[Title/Abstr act] OR ("Slash"[Title/Abstract] AND "burn cultivation"[Title/Abstract]) OR "shifting cultivation"[Title/Abstract]</p> | | |
|----|---|--|--|--|--|

| | | | | | |
|--|--|--|---|--|--|
| | | | <p>OR "Feral"[Title/Abstract]) AND ("Access"[Title/Abstract] OR "Accessibility"[Title/Abstract] OR "Inaccessible"[Title/Abstract] OR "inaccess"[Title/Abstract] OR ("coverage"[Title/Abstract] OR "outreach"[Title/Abstract] OR "reach"[Title/Abstract]) OR ("Use"[Title/Abstract] OR "Usage"[Title/Abstract] OR "Utilisation"[Title/Abstract] OR "Utilization"[Title/Abstract]) OR ("Available"[Title/Abstract] OR "Availability"[Title/Abstract])) AND (Feeding*[Title/Abstract])) OR (nutrition*[Title/Abstract])) OR (care practice*[Title/Abstract])) OR (parenting*[Title/Abstract])) OR (dental*[Title/Abstract])) OR (wellbeing*[Title/Abstract])) OR (mental health*[Title/Abstract])) OR (safe sleeping*[Title/Abstract])) OR (physical activity*[Title/Abstract])) OR (parenting support*[Title/Abstract])) OR (sleep hygiene*[Title/Abstract])) OR (physical activity*[Title/Abstract])</p> | | |
|--|--|--|---|--|--|

| | | | | | |
|----|--|--|--|--------|-------------|
| 15 | <p>(((((Child*[Title/Abstract]) OR (((Under five[Title/Abstract]) OR (Under 5[Title/Abstract])) OR (U5[Title/Abstract]))) OR (((Newborn[Title/Abstract]) OR (Infant[Title/Abstract])) OR (1000 days[Title/Abstract]))) AND (((Intervention*[Title/Abstract]) OR (Strategy*[Title/Abstract])) OR (Practice*[Title/Abstract]))) AND ((((((((((((((((((((((((Vulnerable[Title/A bstract]) OR (Marginal[Title/Abstract])) OR (Marginalised[Title/Abstract])) OR (Marginalized[Title/Abstract])) OR (Refugee[Title/Abstract])) OR (Homeless[Title/Abstract])) OR (Migrant[Title/Abstract])) OR (financial catastrophe[Title/Abstract])) OR (poverty[Title/Abstract])) OR (conflict-affected[Title/Abstract])) OR (Under attack[Title/Abstract])) OR (Displaced[Title/Abstract])) OR (Temporary Accommodation[Title/Abstract])) OR (Temporary Settlement[Title/Abstract])) OR (Temporary Housing[Title/Abstract])) OR (Transitional Settlement[Title/Abstract])) OR (Transitional shelter[Title/Abstract])) OR (Emergency shelter[Title/Abstract])) OR (Emergency accommodation[Title/Abstract])) OR (Emergency housing[Title/Abstract])) OR (Makeshift shelter[Title/Abstract])) OR (Makeshift accommodation[Title/Abstract])) OR (Slash[Title/Abstract] AND Burn Cultivation[Title/Abstract])) OR (Shifting Cultivation[Title/Abstract])) OR (Feral[Title/Abstract])) AND ((((((Access[Title/Abstract]) OR (Accessibility[Title/Abstract])) OR (Inaccessible[Title/Abstract])) OR (inaccess[Title/Abstract])) OR (((coverage[Title/Abstract]) OR (outreach[Title/Abstract])) OR (reach[Title/Abstract])) OR (((Use[Title/Abstract]) OR (Usage[Title/Abstract])) OR (Utilisation[Title/Abstract])) OR (Utilization[Title/Abstract])) OR ((Available[Title/Abstract]) OR (Availability[Title/Abstract]))))</p> | | <p>("child*[Title/Abstract] OR ("under five"[Title/Abstract] OR "under 5"[Title/Abstract] OR "U5"[Title/Abstract]) OR ("Newborn"[Title/Abstract] OR "Infant"[Title/Abstract] OR "1000 days"[Title/Abstract])) AND ("intervention*"[Title/Abstra ct] OR "strategy*"[Title/Abstract] OR "practice*"[Title/Abstract]) AND ("Vulnerable"[Title/Abstract] OR "Marginal"[Title/Abstract] OR "Marginalised"[Title/Abstra ct] OR "Marginalized"[Title/Abstra ct] OR "Refugee"[Title/Abstract] OR "Homeless"[Title/Abstract] OR "Migrant"[Title/Abstract] OR "financial catastrophe"[Title/Abstract] OR "poverty"[Title/Abstract] OR "conflict- affected"[Title/Abstract] OR ("Under"[All Fields] AND "attack"[Title/Abstract]) OR "Displaced"[Title/Abstract] OR "temporary accommodation"[Title/Abstr act] OR "temporary settlement"[Title/Abstract] OR "temporary housing"[Title/Abstract] OR (("transit"[All Fields] OR "transited"[All Fields] OR "transiting"[All Fields] OR "transition"[All Fields] OR "Transitional"[All Fields] OR "transitionals"[All Fields] OR "transitioned"[All Fields] OR "transitioning"[All Fields] OR "transitions"[All Fields] OR "transits"[All Fields]) AND "Settlement"[Title/Abstract]) OR "transitional shelter"[Title/Abstract] OR "emergency shelter"[Title/Abstract] OR "emergency accommodation"[Title/Abstr act] OR "emergency housing"[Title/Abstract] OR ("Makeshift"[All Fields] AND "shelter"[Title/Abstract]) OR ("Makeshift"[All Fields] AND "Accommodation"[Title/Abs tract] OR ("Slash"[Title/Abstract] AND "burn cultivation"[Title/Abstract]) OR "shifting cultivation"[Title/Abstract]</p> | 14,828 | 2:31:4 6 |
|----|--|--|--|--------|-------------|

| | | | | | |
|----|---|--|--|---------------|-------------|
| | | | OR "Feral"[Title/Abstract]) AND ("Access"[Title/Abstract] OR "Accessibility"[Title/Abstract] OR "Inaccessible"[Title/Abstract] OR "inaccess"[Title/Abstract] OR ("coverage"[Title/Abstract] OR "outreach"[Title/Abstract] OR "reach"[Title/Abstract]) OR ("Use"[Title/Abstract] OR "Usage"[Title/Abstract] OR "Utilisation"[Title/Abstract] OR "Utilization"[Title/Abstract]) OR ("Available"[Title/Abstract] OR "Availability"[Title/Abstract])) | | |
| 14 | (((((Access[Title/Abstract]) OR (Accessibility[Title/Abstract])) OR (Inaccessible[Title/Abstract])) OR (inaccess[Title/Abstract])) OR (((coverage[Title/Abstract]) OR (outreach[Title/Abstract])) OR (reach[Title/Abstract])) OR (((Use[Title/Abstract]) OR (Usage[Title/Abstract])) OR (Utilisation[Title/Abstract])) OR (Utilization[Title/Abstract])) OR ((Available[Title/Abstract]) OR (Availability[Title/Abstract])) | | "Access"[Title/Abstract] OR "Accessibility"[Title/Abstract] OR "Inaccessible"[Title/Abstract] OR "inaccess"[Title/Abstract] OR "coverage"[Title/Abstract] OR "outreach"[Title/Abstract] OR "reach"[Title/Abstract] OR "Use"[Title/Abstract] OR "Usage"[Title/Abstract] OR "Utilisation"[Title/Abstract] OR "Utilization"[Title/Abstract] OR "Available"[Title/Abstract] OR "Availability"[Title/Abstract] | 4,907,1 75 | 2:31:2 4 |
| 13 | (Available[Title/Abstract]) OR (Availability[Title/Abstract]) | | "Available"[Title/Abstract] OR "Availability"[Title/Abstract] | 1,358,7 89 | 2:30:5 7 |

| | | | | | | |
|----|---|--|--|--|-----------|---------|
| 12 | ((Use[Title/Abstract]) OR (Usage[Title/Abstract])) OR (Utilisation[Title/Abstract]) OR (Utilization[Title/Abstract]) | | | "Use"[Title/Abstract] OR "Usage"[Title/Abstract] OR "Utilisation"[Title/Abstract] OR "Utilization"[Title/Abstract] | 3,385,414 | 2:30:36 |
| 11 | ((coverage[Title/Abstract]) OR (outreach[Title/Abstract])) OR (reach[Title/Abstract]) | | | "coverage"[Title/Abstract] OR "outreach"[Title/Abstract] OR "reach"[Title/Abstract] | 325,002 | 2:28:26 |
| 10 | ((Access[Title/Abstract]) OR (Accessibility[Title/Abstract])) OR (Inaccessible[Title/Abstract]) OR (inaccess[Title/Abstract]) | | | "Access"[Title/Abstract] OR "Accessibility"[Title/Abstract] OR "Inaccessible"[Title/Abstract] OR "inaccess"[Title/Abstract] | 424,084 | 2:27:31 |
| 9 | (((((Child*[Title/Abstract]) OR ((Under five[Title/Abstract] OR (Under 5[Title/Abstract])) OR (U5[Title/Abstract]))) OR ((Newborn[Title/Abstract] OR (Infant[Title/Abstract]) OR (1000 days[Title/Abstract]))) AND ((Intervention*[Title/Abstract] OR (Strateg*[Title/Abstract]) OR (Practice*[Title/Abstract]))) AND (((((((((((((((((((((((Vulnerable[Title/Abstract]) OR (Marginal[Title/Abstract])) OR (Marginalised[Title/Abstract])) OR (Marginalized[Title/Abstract])) OR (Refugee[Title/Abstract])) OR (Homeless[Title/Abstract])) OR (Migrant[Title/Abstract])) OR (financial catastrophe[Title/Abstract])) OR (poverty[Title/Abstract])) OR (conflict-affected[Title/Abstract])) OR (Under attack[Title/Abstract])) OR (Displaced[Title/Abstract])) OR (Temporary Accommodation[Title/Abstract])) OR (Temporary Settlement[Title/Abstract])) OR (Temporary Housing[Title/Abstract])) OR (Transitional Settlement[Title/Abstract])) OR (Transitional shelter[Title/Abstract])) OR (Emergency shelter[Title/Abstract])) OR (Emergency accommodation[Title/Abstract])) OR (Emergency housing[Title/Abstract])) OR (Makeshift shelter[Title/Abstract])) OR (Makeshift accommodation[Title/Abstract])) OR (Slash[Title/Abstract] AND Burn Cultivation[Title/Abstract])) OR (Shifting Cultivation[Title/Abstract])) OR (Feral[Title/Abstract])) | | | ("child*[Title/Abstract] OR ("under five"[Title/Abstract] OR "under 5"[Title/Abstract] OR "U5"[Title/Abstract]) OR ("Newborn"[Title/Abstract] OR "Infant"[Title/Abstract] OR "1000 days"[Title/Abstract])) AND ("intervention*[Title/Abstract] OR "strategy*[Title/Abstract] OR "practice*[Title/Abstract] AND ("vulnerable"[Title/Abstract]) OR "Marginal"[Title/Abstract] OR "Marginalised"[Title/Abstract] OR "Marginalized"[Title/Abstract] OR "Refugee"[Title/Abstract] OR "Homeless"[Title/Abstract] OR "Migrant"[Title/Abstract] OR "financial catastrophe"[Title/Abstract] OR "poverty"[Title/Abstract] OR "conflict-affected"[Title/Abstract] OR ("Under"[All Fields] AND "attack"[Title/Abstract] OR "Displaced"[Title/Abstract] OR "temporary accommodation"[Title/Abstract] OR "temporary settlement"[Title/Abstract] OR "temporary housing"[Title/Abstract] OR ("transit"[All Fields] OR "transited"[All Fields] OR "transiting"[All Fields] OR "transition"[All Fields] OR "Transitional"[All Fields] OR "transitionals"[All Fields] OR "transitioned"[All Fields] OR "transitioning"[All Fields] OR "transitions"[All Fields] OR "transits"[All | 35,906 | 2:24:50 |

| | | | | | | |
|--|--|--|--|--|--|--|
| | | | | Fields) AND "Settlement"[Title/Abstract]) OR "transitional shelter"[Title/Abstract] OR "emergency shelter"[Title/Abstract] OR "emergency accommodation"[Title/Abstract] OR "emergency housing"[Title/Abstract] OR ("Makeshift"[All Fields] AND "shelter"[Title/Abstract]) OR ("Makeshift"[All Fields] AND "Accommodation"[Title/Abstract]) OR ("Slash"[Title/Abstract] AND "burn cultivation"[Title/Abstract]) OR "shifting cultivation"[Title/Abstract] OR "Feral"[Title/Abstract] | | |
|--|--|--|--|--|--|--|

| | | | | | |
|---|---|--|--|-----------|---------|
| 8 | <p>((((((((Vulnerable[Title/Abstract]) OR (Marginal[Title/Abstract]) OR (Marginalised[Title/Abstract]) OR (Marginalized[Title/Abstract]) OR (Refugee[Title/Abstract]) OR (Homeless[Title/Abstract]) OR (Migrant[Title/Abstract]) OR (financial catastrophe[Title/Abstract]) OR (poverty[Title/Abstract]) OR (conflict-affected[Title/Abstract]) OR (Under attack[Title/Abstract]) OR (Displaced[Title/Abstract]) OR (Temporary Accommodation[Title/Abstract]) OR (Temporary Settlement[Title/Abstract]) OR (Temporary Housing[Title/Abstract]) OR (Transitional Settlement[Title/Abstract]) OR (Transitional shelter[Title/Abstract]) OR (Emergency shelter[Title/Abstract]) OR (Emergency accommodation[Title/Abstract]) OR (Emergency housing[Title/Abstract]) OR (Makeshift shelter[Title/Abstract]) OR (Makeshift accommodation[Title/Abstract]) OR (Slash[Title/Abstract] AND Burn Cultivation[Title/Abstract]) OR (Shifting Cultivation[Title/Abstract]) OR (Feral[Title/Abstract])</p> | | <p>"Vulnerable"[Title/Abstract] OR "Marginal"[Title/Abstract] OR "Marginalised"[Title/Abstract] OR "Marginalized"[Title/Abstract] OR "Refugee"[Title/Abstract] OR "Homeless"[Title/Abstract] OR "Migrant"[Title/Abstract] OR "financial catastrophe"[Title/Abstract] OR "poverty"[Title/Abstract] OR "conflict-affected"[Title/Abstract] OR ("Under"[All Fields] OR "attack"[Title/Abstract] OR "Displaced"[Title/Abstract] OR "temporary accommodation"[Title/Abstract] OR "temporary settlement"[Title/Abstract] OR "temporary housing"[Title/Abstract] OR ("transit"[All Fields] OR "transited"[All Fields] OR "transiting"[All Fields] OR "transition"[All Fields] OR "Transitional"[All Fields] OR "transitionals"[All Fields] OR "transitioned"[All Fields] OR "transitioning"[All Fields] OR "transitions"[All Fields] OR "transits"[All Fields]) OR "Settlement"[Title/Abstract]) OR "transitional shelter"[Title/Abstract] OR "emergency shelter"[Title/Abstract] OR "emergency accommodation"[Title/Abstract] OR "emergency housing"[Title/Abstract] OR ("Makeshift"[All Fields] OR "shelter"[Title/Abstract] OR ("Makeshift"[All Fields] OR "Accommodation"[Title/Abstract] OR ("Slash"[Title/Abstract] OR "burn cultivation"[Title/Abstract] OR "shifting cultivation"[Title/Abstract] OR "Feral"[Title/Abstract]</p> | 2,716,400 | 2:24:36 |
|---|---|--|--|-----------|---------|

| | | | | | | |
|---|---|--|--|--|-----------|---------|
| 7 | ((Child*[Title/Abstract]) OR ((Under five[Title/Abstract]) OR (Under 5[Title/Abstract])) OR (U5[Title/Abstract])) OR ((Newborn[Title/Abstract]) OR (Infant[Title/Abstract])) OR (1000 days[Title/Abstract])) AND ((Intervention*[Title/Abstract]) OR (Strateg*[Title/Abstract]) OR (Practice*[Title/Abstract])) | | | ("child*[Title/Abstract] OR ("under five"[Title/Abstract] OR "under 5"[Title/Abstract] OR "U5"[Title/Abstract]) OR ("Newborn"[Title/Abstract] OR "Infant"[Title/Abstract] OR "1000 days"[Title/Abstract])) AND ("intervention*[Title/Abstract] OR "strateg*[Title/Abstract] OR "practice*[Title/Abstract]) | 262,165 | 2:12:15 |
| 6 | ((Intervention*[Title/Abstract]) OR (Strateg*[Title/Abstract]) OR (Practice*[Title/Abstract])) | | | "intervention*[Title/Abstract] OR "strateg*[Title/Abstract] OR "practice*[Title/Abstract] | 2,553,193 | 2:11:54 |
| 5 | ((Child*[Title/Abstract]) OR ((Under five[Title/Abstract]) OR (Under 5[Title/Abstract])) OR (U5[Title/Abstract])) OR ((Newborn[Title/Abstract]) OR (Infant[Title/Abstract])) OR (1000 days[Title/Abstract])) | | | "child*[Title/Abstract] OR "under five"[Title/Abstract] OR "under 5"[Title/Abstract] OR "U5"[Title/Abstract] OR "Newborn"[Title/Abstract] OR "Infant"[Title/Abstract] OR "1000 days"[Title/Abstract] | 1,806,063 | 2:10:53 |
| 4 | ((Newborn[Title/Abstract]) OR (Infant[Title/Abstract])) OR (1000 days[Title/Abstract]) | | | "Newborn"[Title/Abstract] OR "Infant"[Title/Abstract] OR "1000 days"[Title/Abstract] | 350,613 | 2:10:40 |
| 3 | (Child*[Title/Abstract]) OR ((Under five[Title/Abstract]) OR (Under 5[Title/Abstract])) OR (U5[Title/Abstract]) | | | "child*[Title/Abstract] OR "under five"[Title/Abstract] OR "under 5"[Title/Abstract] OR "U5"[Title/Abstract] | 1,559,369 | 2:09:49 |
| 2 | ((Under five[Title/Abstract]) OR (Under 5[Title/Abstract])) OR (U5[Title/Abstract]) | | | "under five"[Title/Abstract] OR "under 5"[Title/Abstract] OR "U5"[Title/Abstract] | 16,327 | 2:09:27 |
| 1 | Child*[Title/Abstract] | | | "child*[Title/Abstract] | 1,554,019 | 2:09:17 |

Data Extraction Form

- (i) Citation Details
- (ii) Research Design
- (iii) Target Population
 - a. Sample Size
 - b. Inclusion

- c. Number of participants
- d. Number of sites
- e. Type of Setting
- f. Exclusion criteria
- g. Demographics
 - i. Age
 - ii. Gender
- (iv) Target Geography
- (v) Intervention
 - a. Duration
 - b. Number of groups
 - c. Channels of Delivery
 - d. Agency for Delivery
 - e. Service Points
 - f. End-Users
 - g. Scale
 - h. Other Details
- (vi) Evaluation
 - a. Type of Evaluation
 - b. Outcome Measures
 - i. Primary
 - 1. Δ Coverage
 - 2. Δ Access
 - 3. Δ Utilization
 - ii. Secondary
 - c. Impact Measures
 - i. Health
 - 1. Δ Morbidity
 - 2. Δ Mortality
 - 3. Δ DALY
 - 4. Δ QALI
 - ii. Economic
 - 1. RoI

2. Δ Efficiency

3. Δ Cost

REFERENCES

- CUSICK, S. E. & GEORGIEFF, M. K. 2016. The Role of Nutrition in Brain Development: The Golden Opportunity of the "First 1000 Days". *J Pediatr*, 175, 16-21.
- LEVAC, D., COLQUHOUN, H. & O'BRIEN, K. K. 2010. Scoping studies: advancing the methodology. *Implementation science*, 5, 1-9.
- MILLER, P. M. 2009. An Examination of the McKinney-Vento Act and Its Influence on the Homeless Education Situation. *Educational Policy*, 25, 424-450.
- ROSENTHAL DM, L. C., HEYS M, SCHOENTHALER AM, UCCI M, HAYWARD A, ET AL. 2021. Barriers to Optimal Health for Under 5s Experiencing Homelessness and Living In Temporary Accommodation in High-Income Countries: A Scoping Review. *Ann Public Health Res*, 8(1):, 1103.
- ROSENTHAL, D. M., UCCI, M., HEYS, M., HAYWARD, A. & LAKHANPAUL, M. 2020. Impacts of COVID-19 on vulnerable children in temporary accommodation in the UK. *The Lancet Public Health*, 5, e241-e242.