

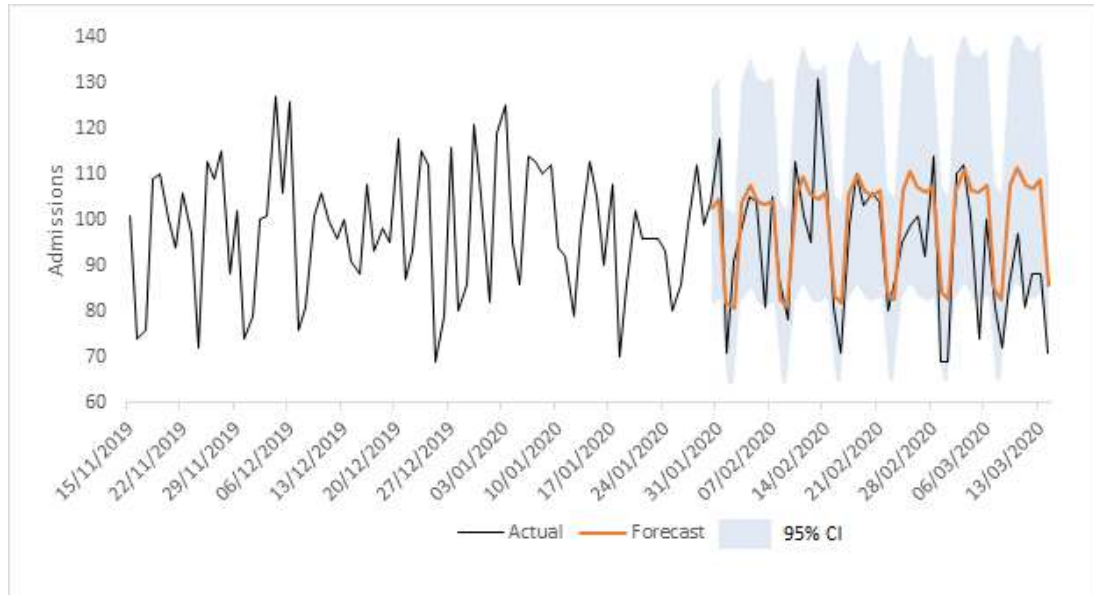
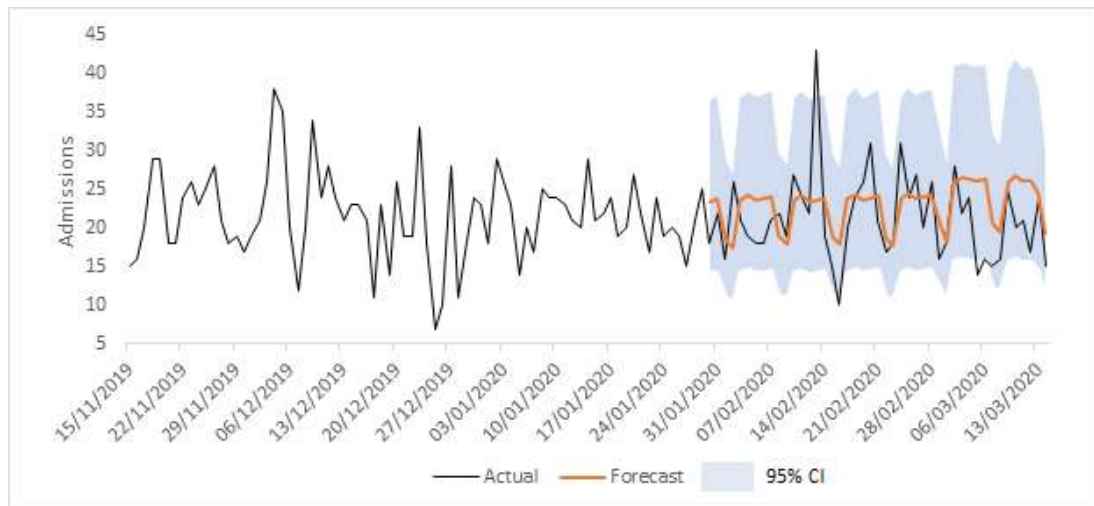
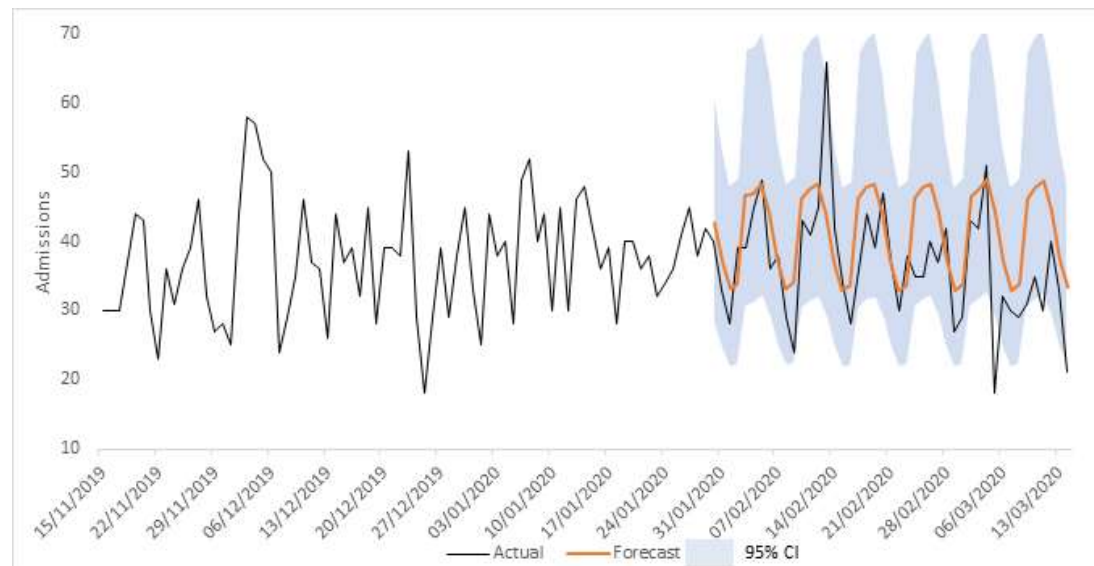
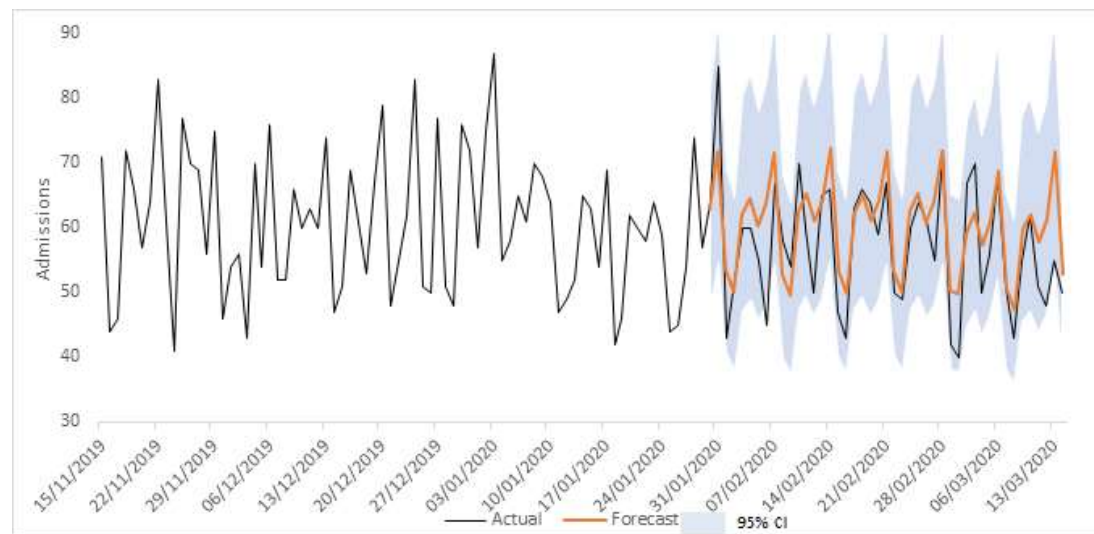
Appendix 1: Subforecast figures**Figure A1: Model 2 (medicine admissions)****Figure A2: Model 3 (surgery admissions)**

Figure A3: Model 4 (under 48 hour length of stay admissions)**Figure A4: Model 5 (over 48 hour length of stay admissions)****Figure A5: Model 6 (under 48 hour length of stay medicine admissions)**

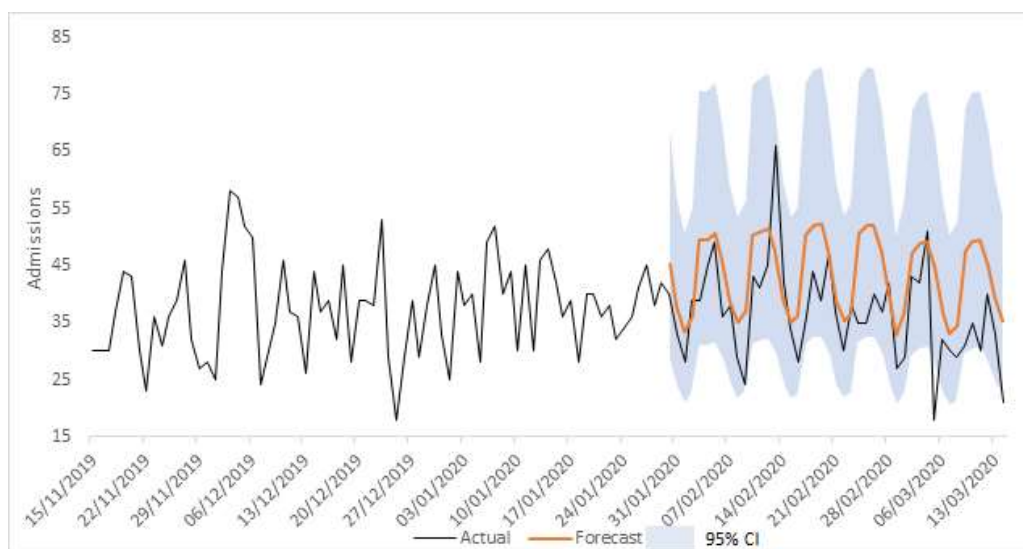


Figure A6: Model 7 (under 48 hour length of stay surgery admissions)

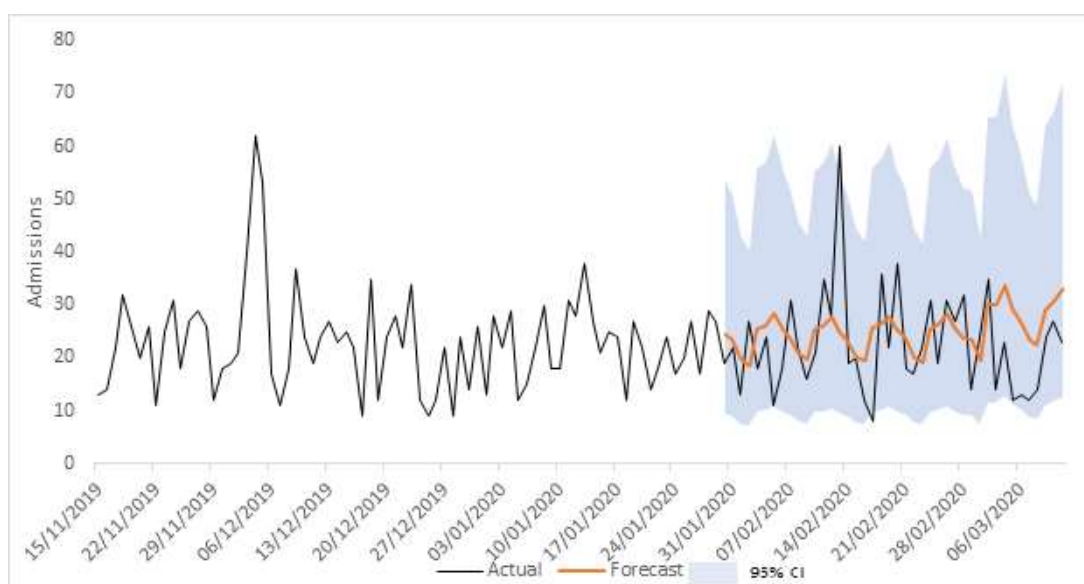


Figure A7: Model 8 (over 48 hour length of stay medicine admissions)

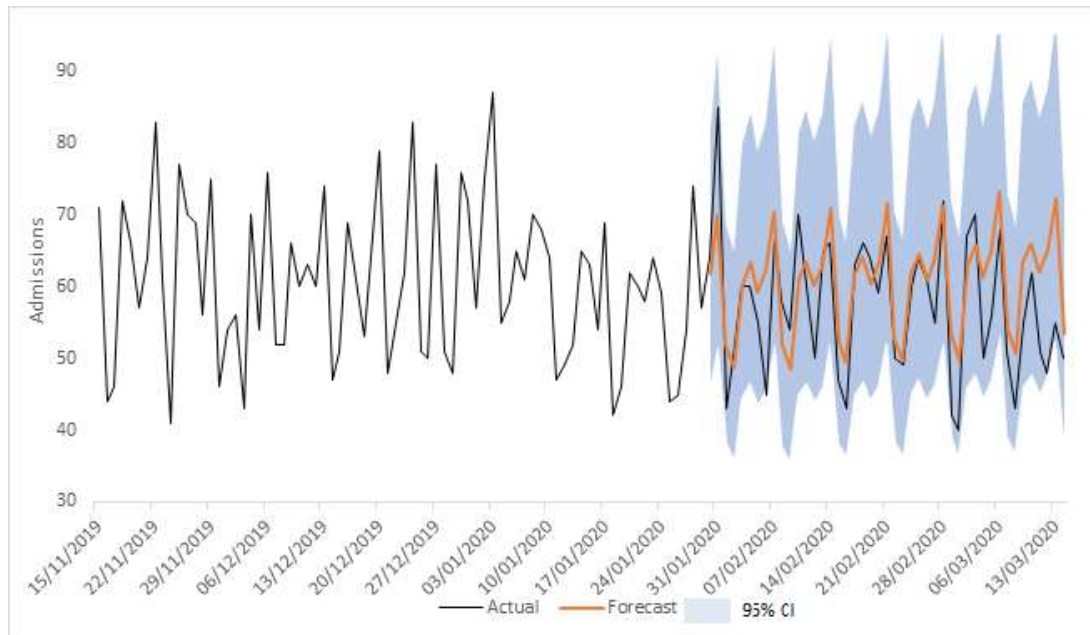


Figure A8: Model 9 (over 48 hour length of stay surgery admissions)

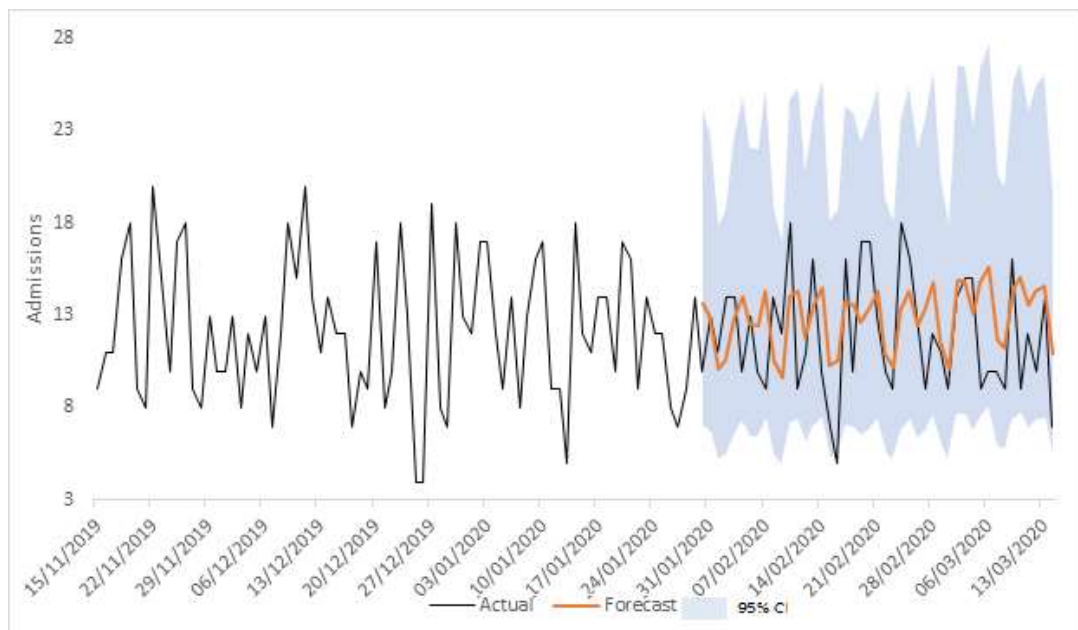


Figure A9: Model 10 (all bed occupancy)

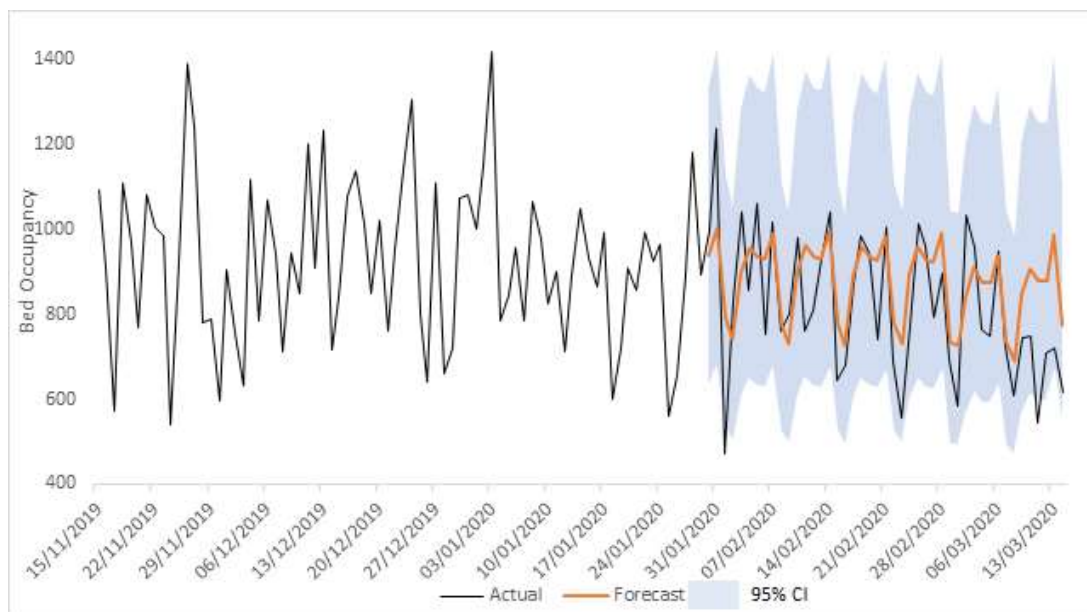


Figure A10: Model 11 (medicine bed occupancy)

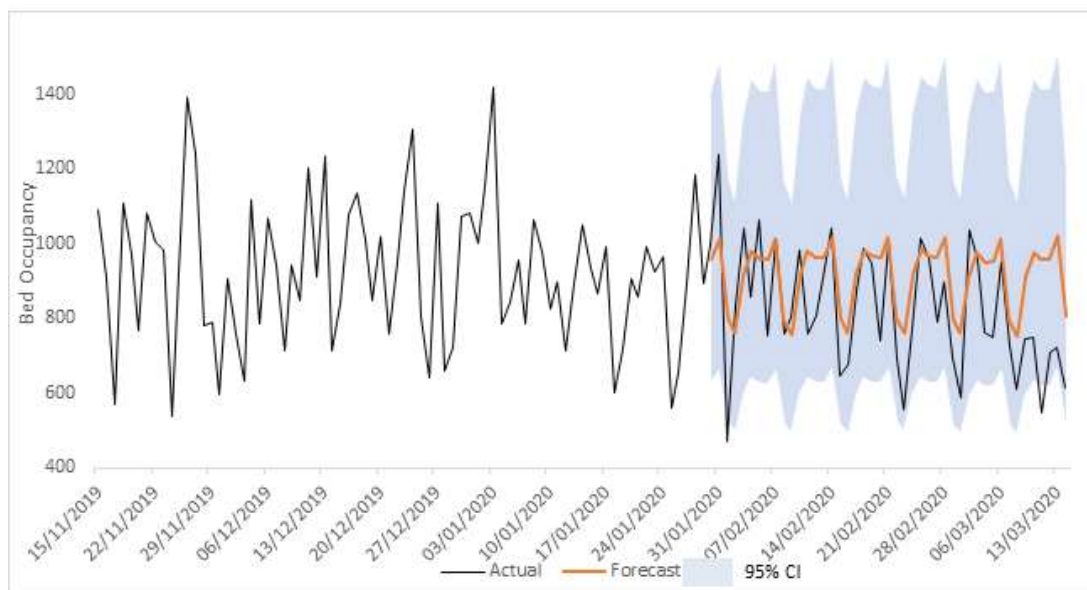


Figure A11: Model 12 (surgery bed occupancy)

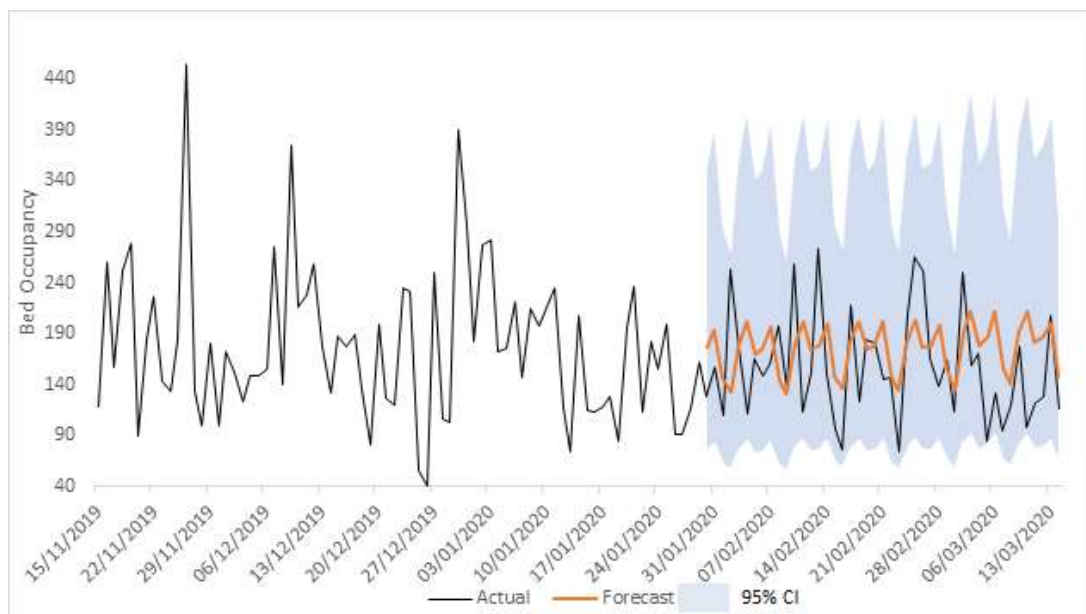


Figure A12: Model 13 (under 48 hour length of stay bed occupancy)

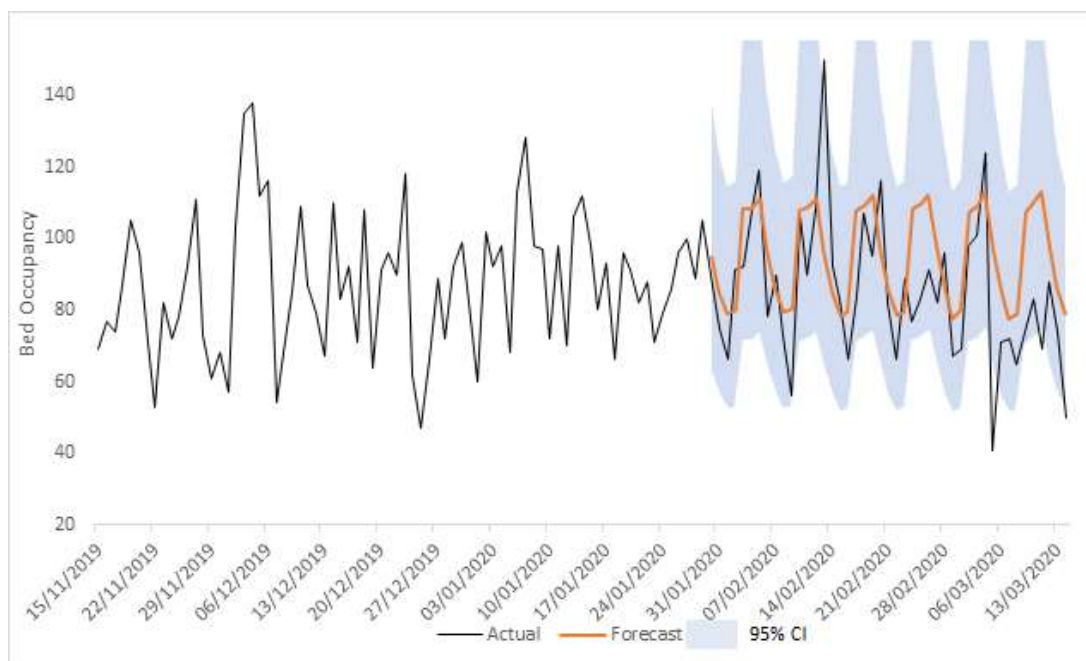


Figure A13: Model 14 (over 48 hour length of stay bed occupancy)

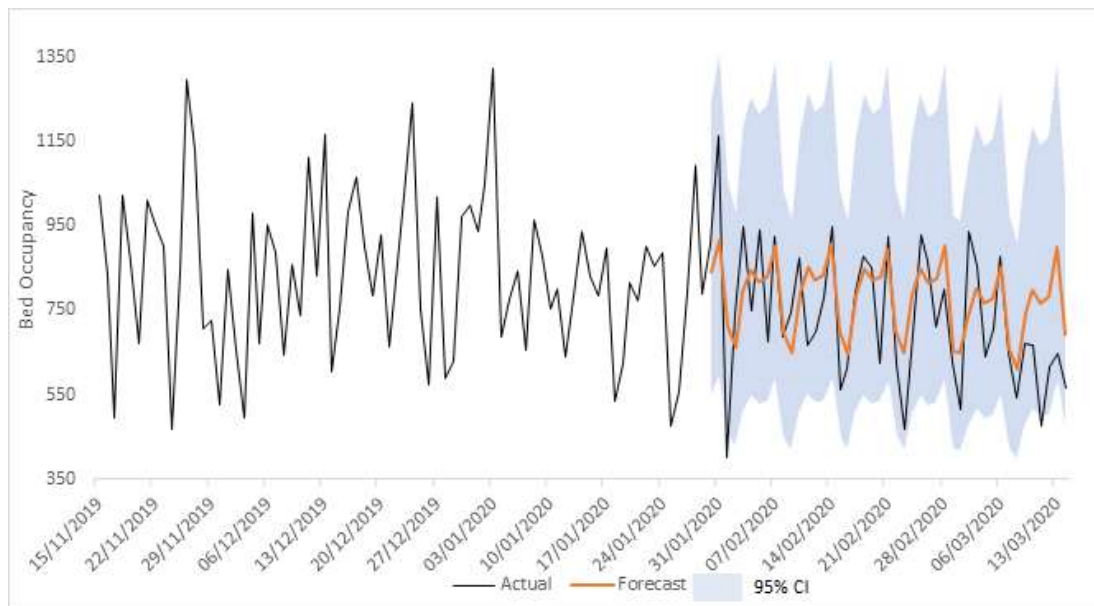


Figure A14: Model 15 (under 48 hour length of stay medicine bed occupancy)

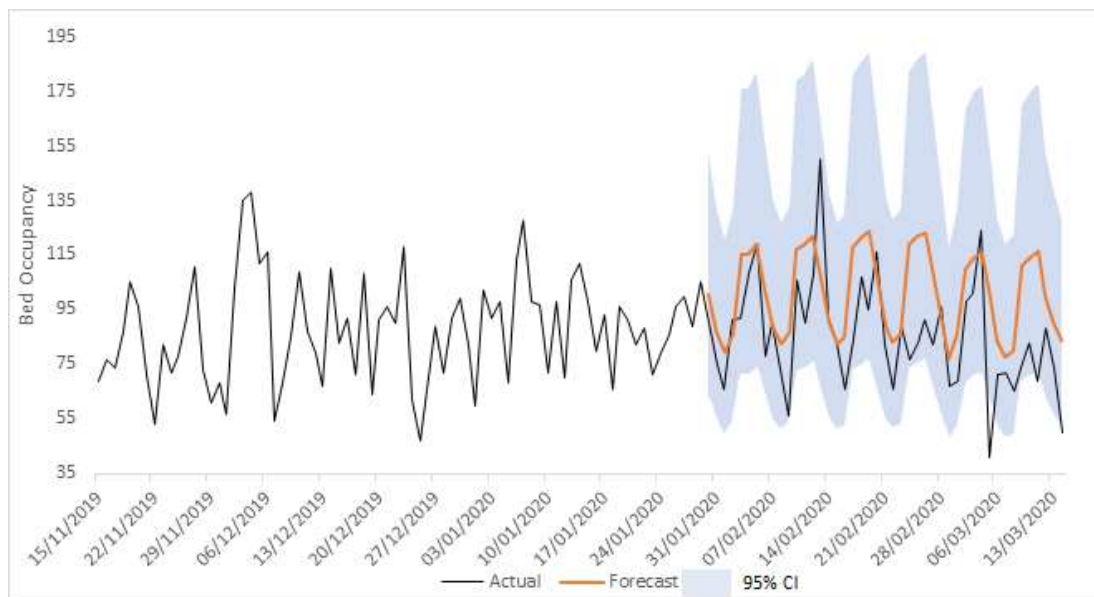


Figure A15: Model 16 (under 48 hour length of stay surgery bed occupancy)

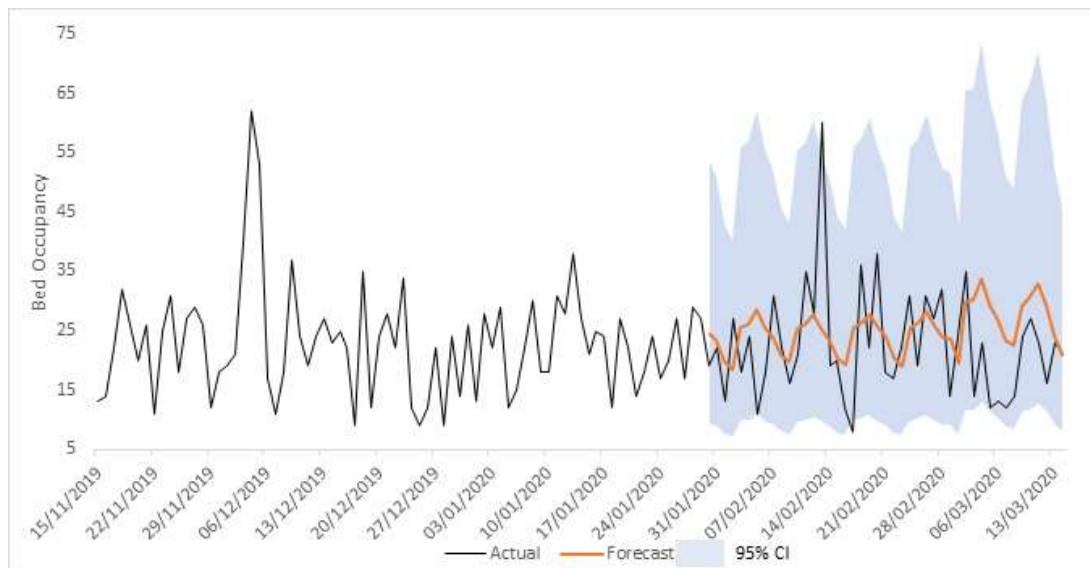


Figure A16: Model 17 (over 48 hour length of stay medicine bed occupancy)

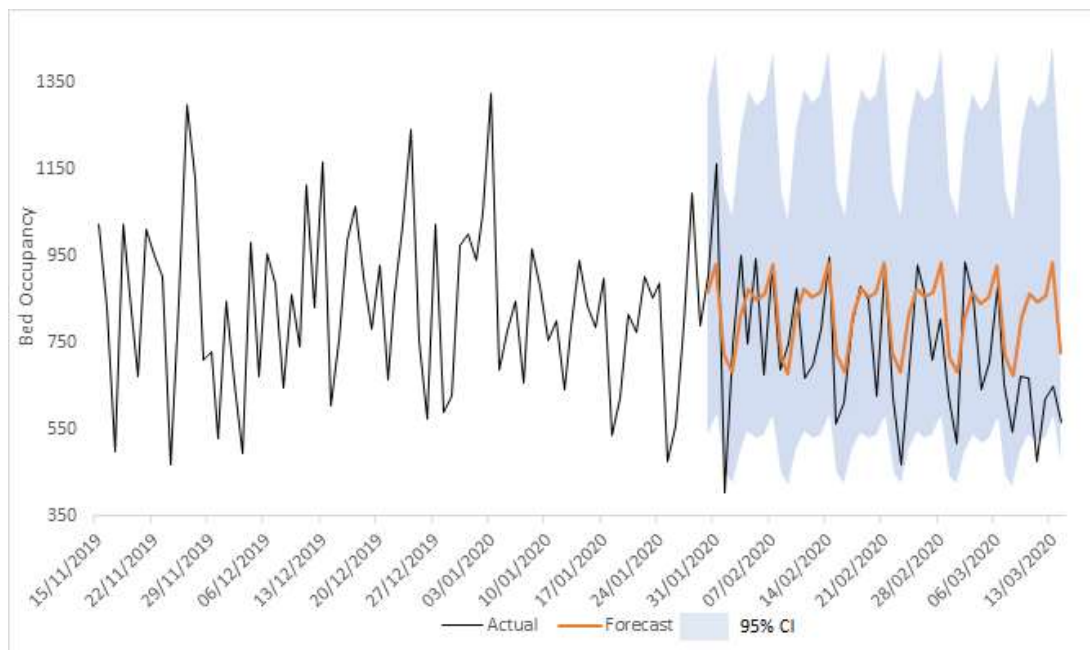


Figure A17: Model 18 (over 48 hour length of stay surgery bed occupancy)

