



BMJ Open Type of hospitalisations and in-hospital outcomes in the Italian coronary care unit network at the time of COVID-19 pandemic: the BLITZ-COVID19 Registry

Michele Massimo Gulizia ^{1,2}, Gianna Fabbri,³ Donata Lucci,³ Giuseppe Di Pasquale,⁴ Domenico Gabrielli,⁵ Jeness Campodonico,⁶ Andrea Mauro,⁷ Riccardo Inciardi,⁸ Emilio Di Lorenzo,⁹ Fabrizio Oliva,¹⁰ Federico Nardi,¹¹ Furio Colivicchi,¹² Leonardo De Luca ⁵, On behalf of BLITZ-COVID19 Investigators

To cite: Gulizia MM, Fabbri G, Lucci D, *et al.* Type of hospitalisations and in-hospital outcomes in the Italian coronary care unit network at the time of COVID-19 pandemic: the BLITZ-COVID19 Registry. *BMJ Open* 2022;**12**:e062382. doi:10.1136/bmjopen-2022-062382

► Prepublication history and additional supplemental material for this paper are available online. To view these files, please visit the journal online (<http://dx.doi.org/10.1136/bmjopen-2022-062382>).

Received 01 March 2022
Accepted 24 October 2022



© Author(s) (or their employer(s)) 2022. Re-use permitted under CC BY-NC. No commercial re-use. See rights and permissions. Published by BMJ.

For numbered affiliations see end of article.

Correspondence to
Professor Michele Massimo Gulizia;
segreteria@periltuocuore.it

ABSTRACT

Objective The aim of the study was to describe the epidemiology and outcome of patients hospitalised during the COVID-19 pandemic in intensive cardiac care units (ICCs).

Design Non-interventional, retrospective and prospective, nationwide study.

Setting 109 private or public ICCs in Italy.

Participants 6054 consecutive patients admitted to Italian ICCs during COVID-19 pandemic.

Primary and secondary outcome measures To obtain accurate and up-to-date information on epidemiology and outcome of patients admitted to ICCs during the COVID-19 pandemic, the impact that the COVID-19 infection may have determined on the organisational pathways and in-hospital management of the various clinical conditions being admitted to ICCs.

Results Acute coronary syndromes were the most frequent ICC discharge diagnoses followed by heart failure and hypokinetic arrhythmias. The prevalence of COVID-19 positivity was approximately 3%. Most patients with a COVID-19 diagnosis at discharge (52%) arrived to ICC from other wards, in particular 22% from non-cardiology ICCs. The overall mortality was 4.2% during ICC and 5.8% during hospital stay. The cause of in-hospital death was cardiac in 74.4% of the cases, non-cardiovascular in 13.5%, vascular in 5.8% and related to COVID-19 in 6.3% of the patients.

Conclusions This study provides a unique nationwide picture of current ICC care during COVID-19 pandemic.

Trial registration number NCT04744415.

INTRODUCTION

In the late February 2020, the first case of COVID-19 was reported in Italy, and, with its rapid spread, it created a major public health problem that has made necessary the reorganisation of hospital beds.^{1,2} Some intensive cardiac care units (ICCs) have been transformed, partially or completely, into intensive care for the treatment of respiratory failure

STRENGTHS AND LIMITATIONS OF THIS STUDY

- ⇒ Non-interventional, retrospective and prospective, nationwide study.
- ⇒ The first and largest nationwide survey evaluating epidemiology, use of resources and outcome of consecutive patients admitted to intensive cardiac cares during the COVID-19 pandemic.
- ⇒ Data limited to the hospitalisation period.

due to COVID-19. Other ICCs were identified as hub centres, where patients with acute cardiovascular disease were referred both directly from the community and from those structures temporarily dedicated to the management of COVID-19.^{1,2}

In this context, the rate and type of hospitalisations in ICCs in the national territory was unknown; in addition, there were no available data on a national scale relating to the levels of in-hospital mortality of the various pathologies admitted to the ICC and whether the coexistence of a COVID-19 infection might have changed in-hospital patients' outcomes.

The BLITZ-COVID19 study, promoted by the Heart Care Foundation of the National Association of Hospital Cardiologists (ANMCO), aimed to describe the epidemiology of hospitalisations in ICCs, the outcome of patients during hospitalisation, the impact that the COVID-19 infection may have determined on the organisational pathways and in-hospital management of the various clinical conditions being admitted to ICCs.

METHODS

The BLITZ-COVID19 (ClinicalTrials.gov Identifier: NCT04744415) was designed as

an observational, multicentre, nationwide study aimed to collect data on patients admitted to ICCs, using a web-based system. All consecutive patients, aged ≥ 18 years, hospitalised with any diagnosis in the participating ICCs in two scheduled enrolment periods (retrospective phase (phase 1) and prospective phase (phase 2)), have been enrolled. In each participant ICC, the enrolment period for each phase was 30 days. No specific, clinical exclusion criteria were foreseen. In phase 1, the enrolment took place between March and April 2020, while phase 2 was completed between November 2020 and February 2021. No follow-up period was foreseen. No specific protocols or recommendations for evaluation, management and/or treatment have been proposed during this observational study. The diagnostic procedures, pharmacological and non-pharmacological therapies, usually prescribed for cardiovascular diseases and those used for COVID-19 infection has been recorded in the database.

ANMCO invited all Italian ICCs located into public, academic or private hospitals to participate to the survey. The protocol was submitted to local ethical committees (ECs) according to current national regulations and the study started at each centre only on the receipt of approval by the EC and local authorities. Patients enrolled in the prospective phase were asked to sign an informed consent for the anonymous management of their individual data. Given the impossibility for organisational reasons of collecting informed consent for the retrospective phase, this data collection, according with ECs authorisation, was carried out in a totally anonymous form, so that there was no possibility of tracing the patient's identity. In fact, all ECs accepted to collect the informed consent only for the prospective phase of the study.

Patient and public involvement

Patients and/or the public were not involved in the design, or conduct, or reporting, or dissemination plans of this research.

Statistical analysis

Categorical variables were reported as number and percentages, and compared by χ^2 test, while continuous variables were reported as median and IQR, and compared by Mann-Whitney U test. A $p < 0.05$ was considered statistically significant. All tests were two sided. Analyses were performed with SAS software, V.9.4.

RESULTS

Among the 398 Italian ICCs, 109 (27.4%) participated in the registry (see online supplemental appendix 1) for a complete list of centres and investigators). The 109 ICCs were classified into 3 types according to their facilities: 21% had both cath lab and cardiac surgery on-site, 47% had cath lab only and the remaining 32% had neither interventional nor surgical facilities. The ICCs dedicated to the treatment of COVID-19 patients were 15 in the phase 1 and 10 in the phase 2.

During the phase 1, 2774 patients were enrolled, while in the phase 2, 3280 patients were prospectively included (a total of 6054 patients): 33.2% were females, 39.5% were ≥ 75 years old and 3.0% (184 patients) were COVID-19 positive (85 in phase 1 and 99 in phase 2).

ST and non-ST elevation myocardial infarction (STEMI and NSTEMI) were the most frequent discharge diagnoses (26.4% and 22.5%, respectively); 13.2% of the cases were diagnosed as heart failure and 7.1% as hypokinetic arrhythmia. A discharge diagnosis of COVID-19 was made for 50 patients (0.8%) (figure 1).

The prevalence of COVID-19 positivity was approximately 3% in all groups, except for the pulmonary embolism group, where it was found in 5.2% of cases (table 1). STEMI and COVID-19 patients were younger than patients with other main discharge diagnoses. Diabetes was the most frequent comorbidity in all patient groups, a previous acute myocardial infarction (AMI) ranged

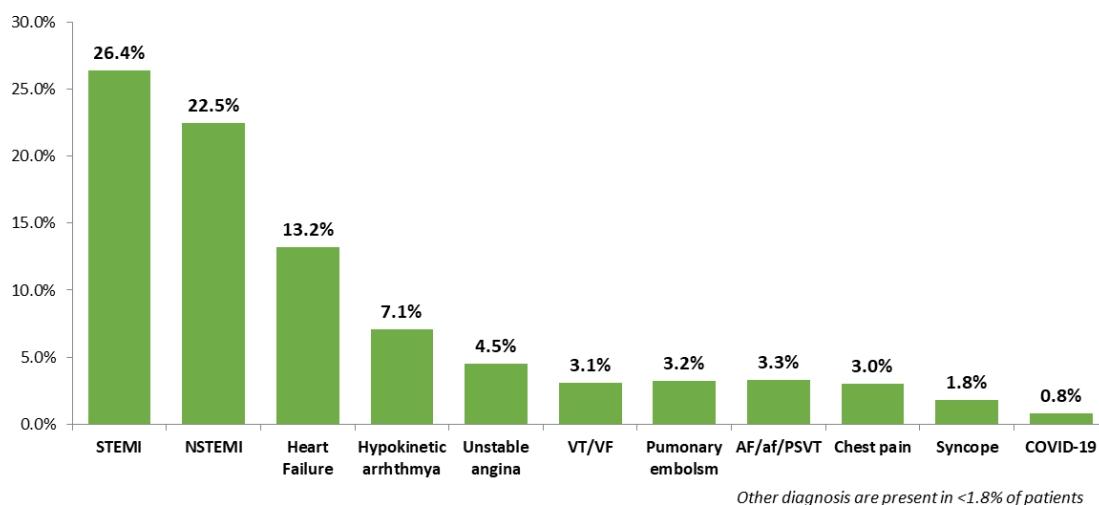


Figure 1 Main discharge diagnosis from ICC. AF, atrial fibrillation; af, atrial flutter; ICCs, intensive cardiac care; STEMI, ST-elevated myocardial infarction; NSTEMI, non-ST-elevation myocardial infarction; PSVT, paroxysmal supraventricular tachycardia; VF, ventricular fibrillation; VT, ventricular tachycardia.

Table 1 Baseline characteristics, comorbidities and use of resources

	STEMI 1595 pts	NSTE-ACS 1635 pts	Heart Failure 801 pts	Arrhythmias 816 pts	PE 194 pts	COVID 50 pts	Other 963 pts	Total 6054 pts
Females, n (%)	403 (25.3)	472 (28.9)	315 (39.3)	319 (39.1)	103 (53.1)	11 (22.0)	386 (40.1)	2009 (33.2)
Age (years), median (IQR)	66 (57–75)	71 (61–80)	76 (67–83)	76 (67–83)	69 (57–78)	68 (60–77)	72 (60–81)	71 (61–80)
Age ≥75 years, n (%)	425 (26.7)	613 (37.5)	420 (52.4)	457 (56.0)	62 (32.0)	16 (32.0)	401 (41.6)	2394 (39.5)
Positive for COVID, n (%)	38 (2.4)	36 (2.2)	11 (1.4)	20 (2.5)	10 (5.2)	50 (100)	19 (2.0)	184 (3.0)
Diabetes, n (%)	320 (20.1)	524 (32.1)	272 (34.0)	199 (24.4)	34 (17.5)	14 (28.0)	217 (22.5)	1580 (26.1)
Previous AMI, n (%)	235 (14.7)	431 (26.4)	245 (30.6)	151 (18.5)	12 (6.2)	4 (8.0)	185 (19.2)	1263 (20.9)
Previous CABG/PCI, n (%)	204 (12.8)	444 (27.2)	206 (25.7)	138 (16.9)	9 (4.6)	4 (8.0)	210 (21.8)	1215 (20.1)
Neoplasm, n (%)	62 (3.9)	67 (4.1)	50 (6.2)	60 (7.4)	28 (14.4)	3 (6.0)	64 (6.7)	334 (5.5)
TTE, n (%)	1466 (91.9)	1499 (91.7)	732 (91.4)	669 (82.0)	180 (92.8)	34 (68.0)	817 (84.8)	5397 (89.2)
Coronary angiography, n (%)	1441 (90.3)	1312 (80.2)	230 (28.7)	116 (14.2)	7 (3.6)	3 (6.0)	331 (34.4)	3440 (56.8)
PCI, n (%)	1390 (87.2)	947 (57.9)	47 (5.9)	23 (2.8)	0 (0.0)	1 (2.0)	98 (10.1)	2506 (41.4)
Chest TC scan, n (%)	95 (6.0)	143 (8.8)	138 (17.2)	71 (8.7)	96 (49.5)	13 (26.0)	173 (18.0)	729 (12.0)
B/CPAP, n (%)	68 (4.3)	72 (4.4)	174 (21.7)	10 (1.2)	12 (6.2)	29 (58.0)	59 (6.1)	424 (7.0)
Invasive ventilation, n (%)	36 (2.3)	13 (0.8)	15 (1.9)	3 (0.4)	3 (1.6)	9 (18.0)	37 (3.8)	116 (1.9)
Definitive pacemaker, n (%)	14 (0.9)	17 (1.0)	12 (1.5)	386 (47.3)	2 (1.0)	0 (0.0)	97 (10.1)	528 (8.7)

ACS, acute coronary syndrome; AMI, acute myocardial infarction; B/CPAP, Bilevel/Continuous Positive Airway Pressure; CABG, coronary artery bypass graft; NSTE, non-ST-segment elevation; PCI, percutaneous coronary intervention; PE, pulmonary embolism; STEMI, ST-elevated myocardial infarction; TTE, transthoracic echocardiogram.

from 6.2% in pulmonary embolism to 30.6% in heart failure and a previous coronary revascularisation in 4.6% of patients with pulmonary embolism and 27.2% in non-ST-segment elevation (NSTEMI)-acute coronary syndrome (ACS) patients (table 1).

Patients admitted to ICC were most often triaged by emergency room, 25.2% of patients with STEMI diagnosis at discharge were transported directly to ICC by the emergency medical service while most patients with a COVID-19 diagnosis at discharge (52%) arrived to ICC from other wards, in particular 22% from non-cardiology intensive care units.

A transthoracic echocardiogram was performed in 89.2% of patients and a coronary angiography in 56.8% of cases. A definitive pacemaker insertion, Bilevel/Continuous Positive Airway Pressure (B/CPAP) and invasive ventilation were used in 8.7%, 7.0% and 1.9% of the patients, respectively (table 1).

As expected, coronary angiography and PCI were mainly performed in patients with a diagnosis of STEMI or NSTEMI-ACS (90.3% and 80.2% for the former, 87.2% and 57.9% for the latest, respectively), while CT scan was performed to a greater extent in patients with COVID-19 and pulmonary embolism (26.0% and 49.5%, respectively).

Drug therapy in ICC

Among the 6054 patients, 1832 (30.3%) were treated with low molecular weight heparins (LMWHs), almost exclusively with enoxaparin, 1112 (18.4%) with oral anticoagulants, 765 (12.6%) with unfractionated heparin and 732 (12.1%) with fondaparinux.

Aspirin was given to 71.3% and a dual antiplatelet therapy was prescribed in 53.7% of the patients. An inhibitor of the RAAS was used in 61.2% of cases, a beta-blocker in 68.5% and a statin in 65.6%. Inotropic support was necessary for 7.2% of patients and 7.3% were treated with intravenous nitrates.

Outcomes in ICCs and in hospital

The median length of ICC and hospital stay was 4 days IQR (2–5) and 7 (5–11), respectively (3 IQR (2–5) and 6 (4–10) days in phase 1, and 4 (2–5) and 7 (5–11) days in phase 2, respectively). Among patients discharged alive, 73.2% were transferred from the ICC to another ward, 19.1% were discharged at home, 6.4% were transferred to another hospital and only 1.3% to a rehabilitation service.

The overall mortality was 4.2% during ICC and 5.8% during hospital stay (figure 2 shows the mortality by phase). In-hospital mortality in patients with STEMI was 5.6% and in NSTEMI-ACS patients 2.8%. The cause of in-hospital death was cardiac in 74.4% of the cases, non-cardiovascular in 13.5%, vascular in 5.8% and related to COVID-19 in 6.3% of the patients.

COVID-19 patients

There were 184 COVID-19 patients, 85 enrolled in phase 1 and 99 in phase 2; the median age of these patients

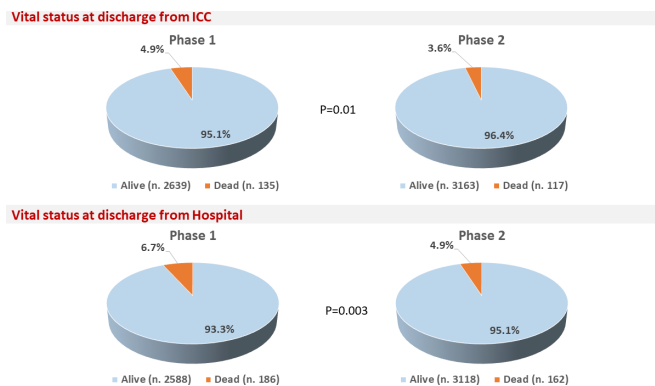


Figure 2 Vital status at discharge by phase (ICC and Hospital). ICC, intensive cardiological unit.

was 69 (59–79) years, 25.5% were female and 65.2% had symptoms of COVID-19; symptomatic patients were much more frequent in the first phase (88.2% vs 45.5%, $p < 0.0001$) (table 2). Differences were found between the two phases also in the need of assisted ventilation, used in 78.8% in phase 1 and in 43.4% in phase 2, $p < 0.0001$. The median length of ICC stay was similar to the total population (median 4 days) while the length of in-hospital stay was longer (median 9 days in COVID-19 vs 7 days in not COVID-19). The length of in-hospital stay of COVID-19 patients was longer in phase 1 than in phase 2 (median 12 vs 7 days, $p < 0.0001$, respectively) (table 2).

Among the 184 COVID-19 patients, 50 (27.2%) were discharged from ICC with a main diagnosis of COVID-19, 20.7% had a STEMI, 15.2% an NSTEMI and 6.0% had a heart failure diagnosis.

Among COVID-19 patients, the mortality was 8.2% in ICC and 16.9% during the hospitalisation; a higher ICC and in-hospital mortality was observed in phase 1 with respect to phase 2, even though statistically significant only for the latter ($p = 0.002$) (figure 3). The in-hospital cause of death was related to the COVID-19 infection in 61.3%, cardiac in 32.3% and vascular in 6.4% of the cases.

The most frequent comorbidity in COVID-19 patients was diabetes (32.6%), followed by coronary artery disease (25.5% of the patients with previous AMI and 20.7% with prior coronary revascularisation). Transthoracic echocardiography was performed in 76.1%, coronary angiography in 41.3% and a chest CT scan in 22.3% of COVID-19 patients (chest CT scan in not COVID-19 was 11.6%).

Notably, nearly 50% did not receive any specific therapy for COVID-19 infection, especially in the second phase (figure 4). LMWHs were used in 49.5% of COVID-19 patients, 12.5% were treated with unfractionated heparin and 9.8% with fondaparinux. Oral anticoagulants, particularly direct anticoagulants, were used in 10.9% of patients. Aspirin was prescribed in 62.0% and a dual antiplatelet therapy in 45.7% of the COVID-19 cases. Among other therapies, beta blockers were prescribed to 52.2%, statins to 47.3%, diuretics to 45.7% and a renin angiotensin system inhibitor to 40.8% of patients; 12.5% of COVID-19 patients required intravenous inotropic support compared with 7.2% of the overall population.

Table 2 COVID-19 patients: baseline characteristics, type of symptoms and length of stay

	Phase 1 (n=85)	Phase 2 (n=99)	Total (n=184)	P value
Females, n (%)	20 (23.5)	27 (27.3)	47 (25.5)	0.56
Age, median (IQR)	68 (59–77)	71 (60–80)	69 (59–79)	0.31
Age ≥75 years, n (%)	25 (29.4)	38 (38.4)	63 (34.2)	0.20
With symptoms, n (%)	75 (88.2)	45 (45.5)	120 (65.2)	<0.0001
pneumonia	67 (89.3)	33 (73.3)	100 (83.3)	0.02
fever	48 (64.0)	24 (53.3)	72 (60.0)	0.25
Assisted ventilation, n (%)	67 (78.8)	43 (43.4)	110 (59.8)	<0.0001
O ₂ Therapy, n (%)	43 (64.2)	40 (93.0)	83 (75.5)	0.0006
CPAP, n (%)	29 (43.3)	10 (23.3)	39 (35.5)	0.03
Intubation, n (%)	11.9	4.7	9.1	0.31
Length of in ICC stay Median (IQR)	4 (3–6)	4 (2–6)	4 (3–6)	0.55
Length of in-hospital stay Median, (IQR)	12 (7–22)	7 (4–12)	9 (6–15)	<0.0001

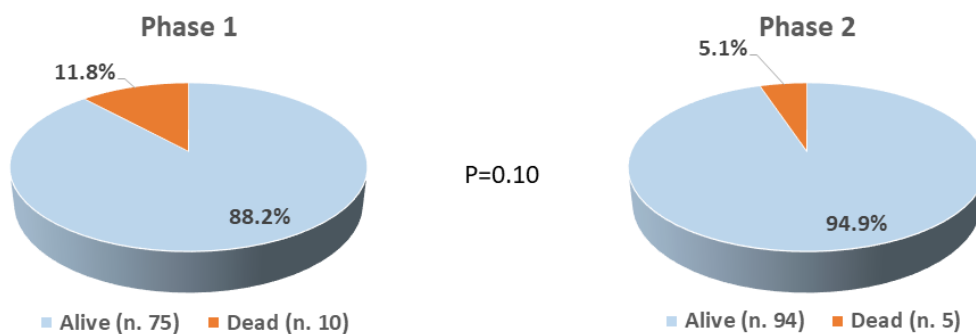
Phase 1 (enrolment between March and April 2020): 30 days for the retrospective phase.
Phase 2 (enrolment between November 2020 and February 2021): 30 days for the prospective phase.
ICC, intensive cardiac care.

DISCUSSION

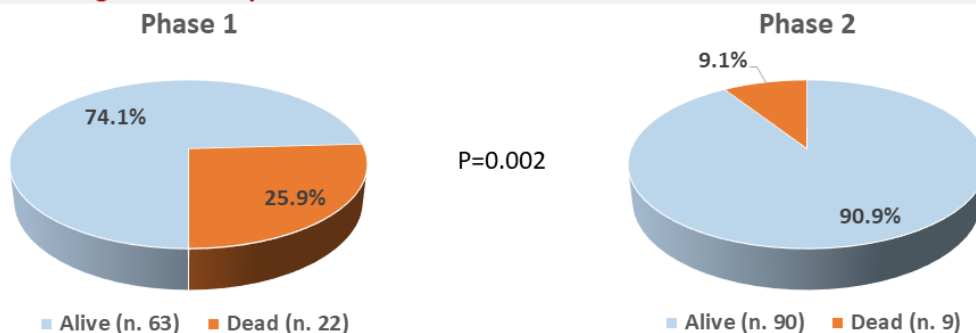
This is the first nationwide survey assessing type of hospitalisation, use of resources and in-hospital outcome of consecutive patients admitted to ICCs during the COVID-19 pandemic. Data were collected both retrospectively and prospectively in two distinct phases of the pandemic. Our data show that, during the pandemic period, Italian ICCs only partially changed the type of hospitalisation, as evidenced by the low percentage

of COVID-19 patients. The reduced percentage of COVID-19 patients observed in our registry may be due to the fact that during the pandemic period, several beds in non-cardiology intensive care units were dedicated to the treatment of more complex COVID-19 patients who deserved ventilatory or circulatory support, preserving the acute cardiovascular care. Nonetheless, ICCs have played an important role in the management of COVID-19 patients, as about a quarter of patients with

Vital status at discharge from ICC



Vital status at discharge from Hospital


Figure 3 Vital status at discharge by phase (from ICC and Hospital) in COVID-19 patients. ICC, intensive cardiac care.

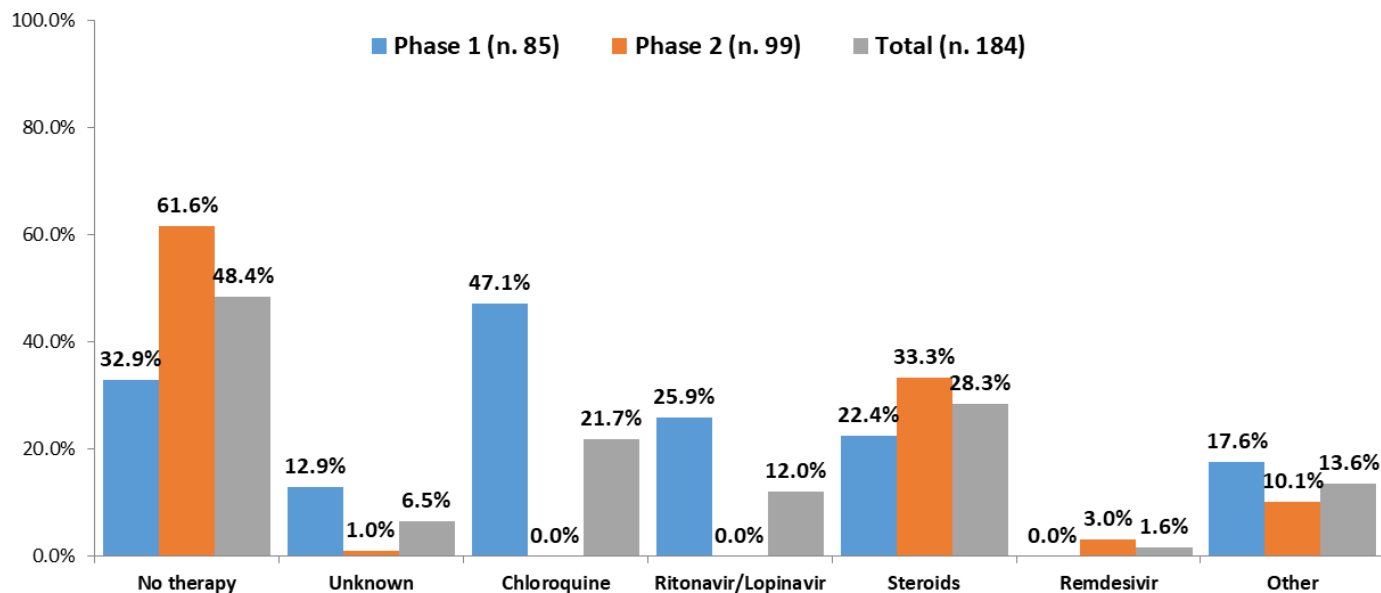


Figure 4 Specific therapy for COVID-19 infection.

a diagnosis of COVID-19 at discharge arrived in ICC from non-cardiology intensive care units.

Over the years, the function of the ICCs has undergone significant changes.³ From units for the treatment of severe arrhythmias in patients hospitalised for AMI they have become intensive therapies for the treatment of a number of severe cardiac conditions.³ These radical functional and structural changes have been well documented by several epidemiological studies published over the last years.⁴⁻⁵ However, compared with surveys conducted in our country about 10 years ago, the type of ICC admissions has not significantly changed during the COVID-19 pandemic.⁴ As difference from previous registries⁴⁻⁶ where patients with NSTEMI-ACS were more represented compared with STEMI, in BLITZ-COVID19 there was a comparable admission number of NSTEMI-ACS and STEMI patients. This finding is likely consistent with the higher reduction of NSTEMI-ACS admissions compared with STEMI during the COVID-19 pandemic, as observed also in other Italian studies.⁷⁻⁹

During the COVID-19 pandemic period, which particularly affected Italy with a significant number of deaths and hospitalisations in intensive care units,¹⁰⁻¹¹ the overall mortality of patients admitted to ICC, especially in the phase 1 of our survey, was substantially higher compared with nationwide surveys previously conducted in our country. These data are also confirmed by the higher in-hospital mortality of patients with ACS even if in both these categories of patients coronary angiography and PCI were performed in a percentage of patients similar to that of other studies.⁴⁻⁶ This is consistent with evidence, much derived from Italian experiences, which has suggested that mortality rate of patients with cardiovascular disease increased during the pandemic.^{7-9 12-17} For instance, in-hospital mortality after ACS increased by 3–4 times compared with the prepandemic period.^{8 14} The reasons for this high mortality rate for ACS are multifactorial and

not completely understood. In a retrospective registry conducted in European high-volume PCI centres, the total ischaemia time and door-to-balloon time in patients with STEMI treated with PCI during COVID-19 pandemic was significantly increased compared with the prior year, suggesting that the system of care was suboptimal and clinical presentations were more aspecific during the COVID-19 pandemic, especially during the lockdown for COVID-19.¹⁸ In this regard, a possible explanation for the difference in in-hospital mortality observed in our registry between the first and second phase may be related to the fact that the second phase includes, for some centres, even months of recruitment in the absence of national lockdown for COVID-19. This could have impacted on the process of care and related outcomes, although we observed a greater use of revascularisation procedures in ACS compared with previous Italian or European registries.^{4 5 19 20} Indeed, a retrospective analysis on patients admitted to the emergency departments for AMI in nine Italian centres, documented an increase in the number of admissions for AMI after the removal of the national lockdown for COVID-19 in Italy, especially in the first weeks following the lockdown removal.²¹

Although in previous studies of hospitalised patients with COVID-19 the concomitant presence of chronic cardiac disease was significantly associated with mortality, in a recent multinational patient registry specifically established to determine the role of cardiovascular diseases in the COVID-19 pandemic, only those with heart failure were at greatest risk of in-hospital death.^{22 23} Since in our study the main diagnosis of heart failure was present in a minority of our COVID-19 patients (6%), it could explain the relative impact of COVID-19 on the overall mortality observed in our series.

In our study, COVID-19 patients had longer hospitalisation, greater use of CT scans and higher in-hospital mortality rates than non-COVID patients admitted to ICC.

Notably, the overall prevalence of pulmonary embolism in our study is lower than in previous studies evaluating COVID-19 patients hospitalised in the first months of the pandemic.^{8 14} This difference may be ascribed to the implemented use of antithrombotic prophylactic strategies in patients admitted with COVID-19, as documented by the fact that heparin therapies were used in over half of the COVID-19 patients enrolled in our registry.

Study limitations

The study suffers several limitations. First, our study must be evaluated in the light of the known limitations of observational studies. Second, patients were enrolled in ICC centres and the population, therefore, does not include patients who died before ICC admission or those admitted to non-ICC cardiology wards. Nonetheless, the BLITZ-COVID19 study is the largest survey on patients admitted to ICC during the COVID-19 pandemic. In addition, on-site auditing was not performed, and our analysis is based on the diagnosis made by the attending physicians. However, because patient management was based on the working diagnosis made by the attending physician, our analysis is suitable for evaluation of patient management. Finally, because our survey did not provide data on long-term outcomes, the relationship between different patterns of care and major clinical events in COVID-19 patients managed by cardiologists in ICCs cannot be evaluated.

CONCLUSION

In conclusion, the BLITZ-COVID-19 registry is the largest survey to date on patients admitted to ICCs during COVID-19 pandemic and provides a nationwide picture of current ICC care during this particular time frame. The overall rate of admission diagnoses is comparable to previous surveys conducted in our country a decade ago, with ACS remaining the most frequent primary admission diagnosis of patients admitted to Italian ICCs. Notably, COVID-19 was only present in approximately 3% of cases. Nevertheless, mortality during ICC stay seems to be higher than in previous nationwide surveys, especially during the national lockdown period for COVID-19, suggesting that the management of patients admitted to ICC was somehow impacted by the pandemic.

Author affiliations

¹Division of Cardiology, National Centre of Excellence Garibaldi-Nesima Hospital, Catania, Italy

²Heart Care Foundation, Firenze, Italy

³ANMCO Research Center, Heart Care Foundation, Firenze, Italy

⁴Regional Authority for Health and Welfare, Emilia-Romagna Region, Bologna, Italy

⁵Department of Cardio-Thoracic and Vascular Medicine and Surgery, Division of Cardiology, A.O. San Camillo-Forlanini, Roma, Italy

⁶Intensive Cardiac Care Unit, Centro Cardiologico Monzino IRCCS, Milano, Italy

⁷Division of Cardiology, San Gerardo Hospital, Monza, Italy

⁸Division of Cardiology, ASST Spedali Civili di Brescia, Brescia, Italy

⁹Division of Cardiology, AORN S. Giuseppe Moscati, Avellino, Italy

¹⁰Division of Cardiology 1, ASST Grande Ospedale Metropolitano Niguarda, Milano, Italy

¹¹Division of Cardiology, Santo Spirito Hospital, Casale Monferrato, Italy

¹²Division of Clinical Cardiology, Presidio Ospedaliero San Filippo Neri, Roma, Italy

Acknowledgements The authors thank patients and investigators from all participating centres.

Collaborators Michele Massimo Gulizia, Furio Colivicchi, Domenico Gabrielli, Leonardo De Luca, Giuseppe Di Pasquale, Federico Nardi, Aldo Pietro Maggioni, Gianna Fabbri, Lucio Gonzini, Andrea Lorimer, Donata Lucci, Giampietro Orsini, Laura Sarti, Giampaolo D'Aleo, Jeness Campodonico, Davide Carlo Corsi, Andrea Mauro, Alessandra Pina, Giulia Molinari, Riccardo M. Inciardi, Elio Gorga, Laura Rossi, Emilio Di Lorenzo, Samanta Setola, Francesca Lanni, Fiore Manganeli, Domenico Di Clemente, Leonardo Paloscia, Nicola Cifaratti, Maurizio Giuseppe Abrignani, Rosanna Campo, Fortunato Scotto Di Uccio, Bernardino Tuccillo, Luigi Irace, Giuseppe Bianco, Tammaro Chiacchio, Luciano Fattore, Luca Golino, Maria Rosaria Pellegrino, Stefano Ferraro, Daniela Aschieri, Valentina Pelizzoni, Massimo Piepoli, Aladino Ibrahim, Paola Antonielli, Valentino Collini, Marzia De Biasio, Olga Rosa Tataje Reyes, Domenico Facchin, Claudio Picariello, Mario Bartolomei, Loris Roncon, Lidia Rossi, Luisa Airoldi, Sara Bacchini, Stefania Sansoni, Enrico Gotti, Marco Ruozzi, Giovanni Barbatì, Massimo Spanghero, Paola Dal Moro, Umberto Baldini, Kristian Ujka, Alberto Genovesi Ebert, Chiara Daneluzzi, Daniela Pavan, Alessandro Brieda, Nicola Locuratolo, Pasquale Caldarola, Lucia Sublimi Saponetti, Anna Toso, Gabriele Grippo, Niccolò Chiriatti, Alfonso Campanile, Amelia Ravera, Elena De Angelis, Prisca Zeni, Roberto Bonmassari, Elisa Minchio, Paola Arrigoni, Roberto Cemin, Roberta Montisci, Luigi Meloni, Maria Francesca Marchetti, Luca Bergamasco, Pierfranco Dellavesa, Giulia Careri, Valentina Boasi, Federico Ariel Sanchez, Nicoletta Pingelli, Lucia Ansani, Gabriele Guardigli, Chiara Manzalini, Alberto Menozzi, Isabella Puccetti, Emanuela Leonetti, Fabio Marsico, Ciro Mauro, Davide D'Andrea, Federico Mercanti, Salvatore Saccà, Paola Angela Maria Purita, Sabine Vecchio, Alessandra Reggi, Andrea Rubboli, Maria Concetta Privitera, Roberto Di Paola, Lisa Innocenti, Massimo Milli, Raffaele Martone, Raffaele Longobardi, Ermelinda Amatruda, Luigi Attianese, Andrea Vergara, Paolo Calabrò, Fabio Fimiani, Attilio Del Rosso, Benedetta Bellandi, Francesco Calabrò, Camillo Autore, Massimo Volpe, Maria Beatrice Musumeci, Stefania Angela Di Fusco, Furio Colivicchi, Alessandro Aiello, Marco Pascotto, Bruno Golia, Nicola Ragosa, Antonio Aloia, Antonio Di Lascio, Alice Vitagliano, Silvia Zagnoni, Francesca Sciarra, Archimede Leccese, Giovanni Antonio Paternò, Carmine Pompeo La Creta, Francesco Versaci, Francesca Sbandi, Valentina Brusca, Gaetano Luca Panetta, Matteo Ruzzolini, Francesca Bux, Massimo Vincenzo Bonfantino, Maria Ida Pansini, Carlo D'Agostino, Giulia Taborchi, Massimo Milli, Luigi Nunziata, Luigi Caliendo, Myriam D'Angelo, Salvina Quattrocchi, Giulia Aguzzi, Luigi De Luca, Cristina Iacovino, Michele De Benedictis, Ercole Tagliamonte, Antonello D'Andrea, Martino Cinquetti, Roberto Mantovan, Massimo Uguccione, Leonardo De Luca, Roberta Gestra, Maria Garbellini, Simona Minardi, Giuseppe Ferraiuolo, Maria Cristina Mulè, Gianfranco Delogu, Alessio Menditto, Roberto Antonicelli, Alessandro Guido, Luigi Zezza, Marco Corda, Alessandro Pani, Riccardo Ieva, Natale Daniele Brunetti, Carlotta Sciacaluga, Serafina Valente, Loredana Mancuso, Franco Ingrassia, Maria Scarcia, Nicola Vitulano, Gaetana Ferro, Nertil Kola, Francesca Percoco, Amir Kol, Alessandro Lombardi, Gianfranco Tortorici, Antonella Galgano, Eugenio Vilei, Pietro Bonaccorso, Maria Giovino, Andrea Damato, Paolo Parziale, Benedetta Thiebat, Gianpiero Leone, Andrea Mazzotti, Giulia Ricci Lucchi, Gianni Mobilia, Giovanni Consolo, Danilo Baccino, Fabrizio Pizzetti, Gerardo Musuraca, Dafne Viliani, Nicola De Simone, Giacomo Levantesi, Guido Belli, Giorgio Bartesaghi, Paolo Costa, Luana Sirugo, Leandro Esposito, Giovanni Napolitano, Giovanni Lorenzoni, Gavino Casu, Andrea Antonelli, Roberto Franco Enrico Pedretti, Rosaria Maria Tenaglia, Claudio Bilato, Martina Patanè, Salvatore Tolaro, Gaia Chiara Selvaggia Magnaghi, Euro Antonio Capponi, Noemi Piccioni, Carmela Lirato, Francesco Piemonte, Massimo Villella, Aldo Russo, Matteo Pennesi, Renato Valenti, Guido Pastorini, Mauro Feola, Angela Di Gianni, Carmela Dragonetti, Mara Lucidi, Manuela Romei, Salvatore Russo, Giovanni Licciardello, Giovanna Geraci, Francesco Pitrolo, Valeria Gasparetto, Filippo Figini, Tiziana Salatino, Fabrizio Tomai, Massimo Michisanti, Fabrizio Tomai, Annalisa Viele, Angela Rita Colavita, Vincenza Vertullo, Alessandro Colombo, Salvatore Arcidiacono, Vincenzo Crisci, Giulia Urso, Giovanni Carlo Piccini, Jacopo Del Meglio, Giancarlo Casolo, Teymour Nejat, Pietro Iodice, Paola Bernabò, Antonella Paglia, Daniele Nassiaco, Maria Teresa De Santis, Sergio Calcagno, Gaspare Buompane, Katia Celentano

Contributors MMG, DG, GDP, FN, FC and LDL are members of the Steering Committee of the study: they designed the study, participated in the conduct of the study, contributed to the interpretation of the results and drafted the manuscript. JC, AM, RI and EDL participated in the conduct of the study and in the acquisition of data and revised the manuscript. GF and FO participated in the conduct of the study, contributed to the interpretation of the results and drafted the manuscript. DL participated in the conduct of the study, contributed to the interpretation of the results and drafted the manuscript. Guarantor for the overall content: MMG.

Funding The sponsor of the study was the Heart Care Foundation, a non-profit independent organisation, which also owns the database. Database management, quality control of the data and data analyses were under the responsibility of the ANMCO Research Centre of the Heart Care Foundation. The study was funded using the Italian contribution '5x1000', fiscal years 2018/2019, devolved to Heart Care Foundation, Florence, Italy. No compensation was provided to participating sites, investigators, nor members of the Steering Committee. The Steering Committee of the study had full access to all of the data of this study and is taking complete responsibility for the integrity of the data and the accuracy of data analysis.

Competing interests All authors have completed the ICMJE uniform disclosure form at www.icmje.org/disclosure-of-interest/ and declare: the study was funded by the Heart Care Foundation; no financial relationships with any organisations that might have an interest in the submitted work in the previous 3 years; no other relationships or activities that could appear to have influenced the submitted work.

Patient and public involvement Patients and/or the public were not involved in the design, or conduct, or reporting, or dissemination plans of this research.

Patient consent for publication Not applicable.

Ethics approval The protocol was submitted to 57 local ethical committees (EC) according to current national regulations and the study started at each centre only on the receipt of approval by the EC and local authorities. As per current Italian regulations, no coordinating IRB was indicated. The IRB of the Co-Chairman of the BLITZ-COVID19 study (PO San Filippo Neri-ASL Roma 1, Roma) approved the study on 22 July 2020 (reference number: 881/CE Lazio 1). The patients enrolled in the perspective phase were asked to sign an informed consent for the anonymous management of their individual data. Given the impossibility of collecting informed consent, retrospective data collection was carried out in a totally anonymous form, so that there is no possibility of tracing the patient's identity. Participants gave informed consent to participate in the study before taking part.

Provenance and peer review Not commissioned; externally peer reviewed.

Data availability statement The dataset used in this study is not publicly available, but it can be provided on reasonable request after the approval of the Steering Committee of the study.

Supplemental material This content has been supplied by the author(s). It has not been vetted by BMJ Publishing Group Limited (BMJ) and may not have been peer-reviewed. Any opinions or recommendations discussed are solely those of the author(s) and are not endorsed by BMJ. BMJ disclaims all liability and responsibility arising from any reliance placed on the content. Where the content includes any translated material, BMJ does not warrant the accuracy and reliability of the translations (including but not limited to local regulations, clinical guidelines, terminology, drug names and drug dosages), and is not responsible for any error and/or omissions arising from translation and adaptation or otherwise.

Open access This is an open access article distributed in accordance with the Creative Commons Attribution Non Commercial (CC BY-NC 4.0) license, which permits others to distribute, remix, adapt, build upon this work non-commercially, and license their derivative works on different terms, provided the original work is properly cited, appropriate credit is given, any changes made indicated, and the use is non-commercial. See: <http://creativecommons.org/licenses/by-nc/4.0/>.

ORCID iDs

Michele Massimo Gulizia <http://orcid.org/0000-0003-1513-7125>

Leonardo De Luca <http://orcid.org/0000-0002-8552-1272>

REFERENCES

- Grasselli G, Greco M, Zanella A, *et al.* Risk factors associated with mortality among patients with COVID-19 in intensive care units in Lombardy, Italy. *JAMA Intern Med* 2020;180:1345–55.
- Remuzzi A, Remuzzi G. COVID-19 and Italy: what next? *Lancet* 2020;395:1225–8.
- Katz JN, Turer AT, Becker RC. Cardiology and the critical care crisis: a perspective. *J Am Coll Cardiol* 2007;49:1279–82.
- Casella G, Cassin M, Chiarella F, *et al.* Epidemiology and patterns of care of patients admitted to Italian intensive cardiac care units: the BLITZ-3 registry. *J Cardiovasc Med* 2010;11:450–61.
- De Luca L, Leonardi S, Cavallini C, *et al.* Contemporary antithrombotic strategies in patients with acute coronary syndrome admitted to cardiac care units in Italy: the EYESHOT study. *Eur Heart J Acute Cardiovasc Care* 2015;4:441–52.
- Casella G, Di Pasquale G, Oltrona Visconti L, *et al.* Management of patients with acute coronary syndromes in real-world practice in Italy: an outcome research study focused on the use of antithrombotic agents: the MANTRA registry. *Eur Heart J Acute Cardiovasc Care* 2013;2:27–34.
- De Filippo O, D'Ascenzo F, Angelini F, *et al.* Reduced rate of hospital admissions for ACS during Covid-19 outbreak in northern Italy. *N Engl J Med* 2020;383:88–9.
- De Rosa S, Spaccarotella C, Basso C, *et al.* Reduction of hospitalizations for myocardial infarction in Italy in the COVID-19 era. *Eur Heart J* 2020;41:2083–8.
- Campo G, Fortuna D, Berti E, *et al.* In- and out-of-hospital mortality for myocardial infarction during the first wave of the COVID-19 pandemic in Emilia-Romagna, Italy: a population-based observational study. *Lancet Reg Health Eur* 2021;3:100055.
- Onder G, Rezza G, Brusaferro S. Case-fatality rate and characteristics of patients dying in relation to COVID-19 in Italy. *JAMA* 2020;323:1775–6.
- Immovilli P, Morelli N, Antonucci E, *et al.* COVID-19 mortality and ICU admission: the Italian experience. *Crit Care* 2020;24:228.
- Cannata A, Watson SA, Daniel A. Impact of the COVID-19 pandemic on in-hospital mortality in cardiovascular disease: a meta-analysis. *Eur J Prev Cardiol* 2021:zwab119.
- Xiong T-Y, Redwood S, Prendergast B, *et al.* Coronaviruses and the cardiovascular system: acute and long-term implications. *Eur Heart J* 2020;41:1798–800.
- Inciardi RM, Adamo M, Lupi L, *et al.* Characteristics and outcomes of patients hospitalized for COVID-19 and cardiac disease in Northern Italy. *Eur Heart J* 2020;41:1821–9.
- Mesnier J, Cottin Y, Coste P, *et al.* Hospital admissions for acute myocardial infarction before and after lockdown according to regional prevalence of COVID-19 and patient profile in France: a registry study. *Lancet Public Health* 2020;5:e536–42.
- Rashid Hons M, Gale Hons CP, Curzen Hons N, *et al.* Impact of coronavirus disease 2019 pandemic on the incidence and management of out-of-hospital cardiac arrest in patients presenting with acute myocardial infarction in England. *J Am Heart Assoc* 2020;9:e018379.
- Baldi E, Sechi GM, Mare C, *et al.* Out-of-Hospital cardiac arrest during the Covid-19 outbreak in Italy. *N Engl J Med* 2020;383:496–8.
- De Luca G, Verdoia M, Cercek M, *et al.* Impact of COVID-19 pandemic on mechanical reperfusion for patients with STEMI. *J Am Coll Cardiol* 2020;76:2321–30.
- Widimsky P, Zelizko M, Jansky P, *et al.* The incidence, treatment strategies and outcomes of acute coronary syndromes in the "reperfusion network" of different hospital types in the Czech Republic: results of the Czech evaluation of acute coronary syndromes in hospitalized patients (CZECH) registry. *Int J Cardiol* 2007;119:212–9.
- Carruthers KF, Dabbous OH, Flather MD, *et al.* Contemporary management of acute coronary syndromes: does the practice match the evidence? the global registry of acute coronary events (GRACE). *Heart* 2005;91:290–8.
- Rognoni A, D'Ascenzo F, Solli M, *et al.* Return towards normality in admissions for myocardial infarction after the lockdown removal for COVID-19 outbreak in Italy. *Int J Cardiol* 2021;332:235–7.
- Linschoten M, Peters S, van Smeden M, *et al.* Cardiac complications in patients hospitalised with COVID-19. *Eur Heart J Acute Cardiovasc Care* 2020;9:817–23.
- CAPACITY-COVID Collaborative Consortium and LEOSS Study Group. Clinical presentation, disease course, and outcome of COVID-19 in hospitalized patients with and without pre-existing cardiac disease: a cohort study across 18 countries. *Eur Heart J* 2021:ehab656.

Appendix

Steering Committee

M.M. Gulizia (Chairperson; Catania), F. Colivicchi (Co-Chairperson; Roma); D. Gabrielli (Co-Chairperson; Roma); L. De Luca (Roma); G. Di Pasquale (Bologna); F. Nardi (Casale Monferrato)

Executive Committee

M.M. Gulizia, D. Lucci

Coordinating Center

ANMCO Research Center, Heart Care Foundation, Firenze (A.P. Maggioni, G. Fabbri, L. Gonzini, A. Lorimer, D. Lucci, G. Orsini, L. Sarti)

Participating Centers and Investigators

Milano, Centro Cardiologico Monzino IRCCS, Terapia Intensiva Cardiologica (UTIC) (G D'Aleo, J Campodonico); *Monza*, Ospedale San Gerardo, UO Cardiologia-UTIC (DC Corsi, A Mauro, A Pina, G Molinari); *Brescia*, ASST Spedali Civili, Cardiologia (RM Inciardi, E Gorga, L Rossi); *Avellino*, AORN San Giuseppe Moscati, UO Cardiologia/UTIC 'D. Rotiroti' (E Di Lorenzo, S Setola, F Lanni, F Manganelli); *Pescara*, Ospedale Civile dello Spirito Santo, Cardiologia con UTIC (D Di Clemente, L Paloscia, N Cifaratti); *Erice*, PO S. Antonio Abate di Trapani, UOC Cardiologia e UTIC (MG Abrignani, R Campo); *Napoli*, Ospedale del Mare, UO Cardiologia con UTIC (F Scotto Di Uccio, B Tuccillo, L Irace, G Bianco); *Aversa*, PO Moscati, UOC Cardiologia-UTIC (T Chiacchio, L Fattore, L Golino, MR Pellegrino); *Piacenza*, Ospedale Civile 'Guglielmo Da Saliceto', UO Cardiologia (S Ferraro, D Aschieri, V Pelizzoni, M Piepoli); *Bagno a Ripoli*, Ospedale Santa Maria Annunziata, Cardiologia (A Ibrahim, P Antonielli); *Udine*, POU Santa Maria della Misericordia, SOC Cardiologia (V Collini, M De Biasio, OR Tataje Reyes, D Facchin); *Rovigo*, Ospedale Santa Maria della Misericordia, UOC Cardiologia (C Picariello, M Bartolomei, L Roncon); *Novara*, AOU Maggiore della Carità, Cardiologia II (L Rossi, L Airoidi, S Bacchini); *Modena*, Ospedale Civile di Baggiovara, UO Cardiologia (S Sansoni, E Gotti, M Ruozzi); *Vicenza*, Ospedale Civile San Bortolo, UOC Cardiologia (G Barbati, M Spanghero, P Dal Moro); *Livorno*, Ospedali Riuniti, UOC Cardiologia e UTIC (U Baldini, K Ujka, A Genovesi Ebert); *Pordenone*, Ospedale di Pordenone, SOC Cardiologia (C Daneluzzi, D Pavan, A Brieda); *Bari*, Ospedale San Paolo, Cardiologia-UTIC (N Locuratolo, P Caldarola, L Sublimi Saponetti); *Prato*, Ospedale Santo Stefano, UO Cardiologia (A Toso, G Grippo, N Chiriatti); *Salerno*, AOU S. Giovanni di Dio-Ruggi D'Aragona, SSD UTIC (A Campanile, A Ravera, E De Angelis); *Trento*, Ospedale Santa Chiara, Divisione di Cardiologia (P Zeni, R Bonmassari, E Minchio); *Bolzano*, Ospedale Generale Regionale, Divisione di Cardiologia (P Arrigoni, R Cemin); *Monsezzato*, AOU Cagliari Policlinico Monsezzato, SC Cardiologia UTIC Emodinamica (R Montisci, L Meloni, MF Marchetti); *Borgomanero*, Ospedale SS. Trinità, SC Cardiologia (L Bergamasco, P Dellavesa, G Careri); *Sanremo*, Presidio Ospedaliero, UO Cardiologia (V Boasi, F Ariel Sanchez, N Pingelli); *Ferrara*, Arcispedale Sant'Anna, UO Cardiologia – UTIC (L Ansani, G Guardigli, C Manzalini); *La Spezia*, Ospedale S. Andrea, SC Cardiologia (A Menozzi, I Puccetti, E Leonetti); *Napoli*, AORN Cardarelli, UO Cardiologia con UTIC (F Marsico, C Mauro, D D'Andrea); *Mirano*, ULSS 3 Serenissima PO Mirano, UO Cardiologia (F Mercanti, S Saccà, PAM Purita); *Ravenna*, Ospedale Civile Santa Maria delle Croci, UO Cardiologia (S Vecchio, A Reggi, A Rubboli); *Catania*, PO Garibaldi Centro, UOC Cardiologia (MC Privitera, R Di Paola); *Firenze*, Ospedale Santa Maria Nuova, Cardiologia (L Innocenti, M Milli, R Martone); *Castellammare di Stabia*, Ospedale San Leonardo, UO Cardiologia-UTIC (R Longobardi, E Amatruda, L Attianese); *Caserta*, AO S. Anna e S. Sebastiano, UO Cardiologia-UTIC (A Vergara, P Calabrò, F Fimiani); *Empoli*, Ospedale San Giuseppe, Cardiologia (A Del Rosso, B Bellandi, F Calabrò); *Roma*, Ospedale Sant'Andrea di Roma, UOC Cardiologia (C Autore, M Volpe, MB Musumeci); *Roma*, PO

San Filippo Neri – ASL Roma 1, Cardiologia Clinica e Riabilitativa (SA Di Fusco, F Colivicchi, A Aiello); *Napoli*, Clinica Mediterranea, UO Cardiologia (M Pascotto, B Golia); *Vallo della Lucania*, Ospedale San Luca, UO UTIC – Cardiologia (N Ragoza, A Aloia, A Di Lascio); *Bologna*, Ospedale Maggiore, UO Cardiologia (A Vitagliano, S Zagnoni, F Sciarra); *Potenza*, AO San Carlo, SSD UTIC (A Leccese, GA Paternò, CP La Creta); *Latina*, Ospedale S. Maria Goretti, UOC Malattie Cardiovascolari (F Versaci, F Sbandi, V Brusca); *Roma*, Ospedale Fatebenefratelli, UOC Cardiologia (GL Panetta, M Ruzzolini); *Bari-Carbonara*, Ospedale di Venere, UOC Cardiologia (F Bux, MV Bonfantino); *Bari*, AOU Policlinico, UOC Cardiologia Ospedaliera (MI Pansini, C D'Agostino); *Firenze*, Ospedale San Giovanni di Dio, Cardiologia (G Taborchi, M Milli); *Nola*, PO S. Maria della Pietà, UO Cardiologia e UTIC (L Nunziata, L Caliendo); *Messina*, IRCCS Centro Neurolesi Bonino Pulejo - P.O Piemonte, Cardiologia e UTIC (M D'Angelo, S Quattrocchi); *Pontedera*, Ospedale Generale Provinciale Lotti, UO Malattie Cardiovascolari VDE e AVC (G Aguzzi, L De Luca); *Savigliano*, Ospedale Maggiore SS. Annunziata, SC Cardiologia (C Iacovino, M De Benedictis); *Nocera Inferiore*, PO Nocera-Pagani - Osp. Umberto I, UOC Cardiologia – UTIC (E Tagliamonte, A D'Andrea); *Conegliano*, Ospedale Santa Maria dei Battuti, UO Cardiologia (M Cinquetti, R Mantovan); *Roma*, Ospedale San Camillo, UOC Cardiologia (M Uguccioni, L De Luca); *Sondrio*, Ospedale Civile, UO Cardiologia (R Gestra, M Garbellini); *Roma*, Ospedale Sandro Pertini, UOC Cardiologia (S Minardi, G Ferraiuolo); *San Gavino Monreale*, Ospedale Nostra Signora di Bonaria, UOC Cardiologia e UTIC (MC Mulè, G Delogu); *Ancona*, IRCCS INRCA, UO Cardiologia/UTIC/Telecardiologia (A Menditto, R Antonicelli); *Tricase*, AO Cardinale G. Panico, UO Cardiologia – UTIC (A Guido, L Zezza); *Cagliari*, ARNAS G. Brotzu, Cardiologia con UTIC (M Corda, A Pani); *Foggia*, Ospedali Riuniti, SC Cardiologia Univ.-UTIC (R Ieva, ND Brunetti); *Siena*, AOU Senese Ospedale S. Maria alle Scotte, UOC Cardiologia Clinico-Chirurg. UTIC (C Sciaccaluga, S Valente); *Palermo*, AOR Villa Sofia-Cervello PO Villa Sofia, UOC Cardiologia e UTIC - Villa Sofia (L Mancuso, F Ingrilli); *Acquaviva delle Fonti*, Ospedale Miulli, UOC Cardiologia – UTIC (M Scarcia, N Vitulano); *Battipaglia*, PO S. Maria della Speranza, UO Cardiologia (G Ferro, N Kola); *Rieti*, PO San Camillo De Lellis, UOC Cardiologia (F Percoco, A Kol); *Bentivoglio*, Ospedale di Bentivoglio, UO Cardiologia (A Lombardi, G Tortorici); *Scorrano*, Ospedale Ignazio Veris Delli Ponti, UOC Cardiologia-UTIC (A Galgano, E Vilei); *Cefalù*, Fondazione G. Giglio, UO Cardiologia e UTIC (P Bonaccorso, M Giovino); *Lacco Ameno*, Ospedale Anna Rizzoli, Cardiologia-UTIC (A Damato, P Parziale); *Aosta*, Ospedale Generale Regionale-PO U. Parini, UO Cardiologia e Cure Intensive Card. (B Thiebat, G Leone); *Faenza*, Ospedale per gli Infermi, UO Cardiologia – UTIC (A Mazzotti, G Ricci Lucchi); *Messina*, AOR Papardo, UO Cardiologia con UTIC (G Mobilia, G Consolo); *Casale Monferrato*, Ospedale Santo Spirito, SC Cardiologia (D Baccino, F Pizzetti); *Rovereto*, Ospedale Santa Maria del Carmine, Cardiologia (G Musuraca, D Viliani); *Vasto*, Ospedale San Pio da Pietrelcina, Cardiologia (N De Simone, G Levantesi); *Gravedona*, Ospedale Moriggia Pelascini, UO Cardiologia (G Belli, G Bartesaghi); *Avola*, Ospedale G. di Maria, Cardiologia UTIC (P Costa, L Sirugo); *Giugliano in Campania*, Ospedale Generale di Zona, UO Cardiologia – UTIC (L Esposito, G Napolitano); *Nuoro*, Ospedale San Francesco, Cardiologia – UTIC (G Lorenzoni, G Casu); *Sesto San Giovanni*, IRCCS Policlinico Multimedica, UO Cardiologia (A Antonelli, RFE Pedretti); *Arzignano*, Ospedale Civile, UOC Cardiologia (RM Tenaglia, C Bilato); *Pedara*, Centro Cuore Morgagni, UF UTIC ed Emodinamica (M Patanè, S Tolaro); *Pescia*, Ospedale SS. Cosma e Damiano, UO Cardiologia – UTIC (GCS Magnaghi); *Gubbio*, Ospedale Gubbio-Gualdo Tadino, UO UTIC e Cardiologia (EA Capponi, N Piccioni); *Frattamaggiore*, Ospedale San Giovanni di Dio, UO Cardiologia – UTIC (C Lirato, F Piemonte); *San Giovanni Rotondo*, Fondazione IRCCS Casa Sollievo della Sofferenza, Cardiologia - UTIC - Riabil Cardiologica (M Villella, A Russo); *Firenze*, AOU Careggi, Cardiologia Interventistica (M Pennesi, R Valenti); *Mondovì*, Ospedale Regina Montis Regalis, UO Cardiologia-UTIC (G Pastorini, M Feola); *Ariano Irpino*, PO Sant'Ottone Frangipane, UOC Cardiologia – UTIC (A Di Gianni, C Dragonetti); *Poggibonsi*, Ospedale dell'Alta Val d'Elsa, UOSD Cardiologia- UTIC (M Lucidi, M Romei); *Augusta*, Ospedale E. Muscatello, UO Cardiologia – UTIC (S Russo, G Licciardello); *Palermo*, AOR Villa Sofia-

Cervello PO Cervello, UO Cardiologia – Cervello (G Geraci, F Pitrolo); *Peschiera del Garda*, Casa di Cura Dr. Pederzoli, Servizio di Cardiologia (V Gasparetto, F Figini); *Roma*, European Hospital, UO Cardiologia Interventistica (T Salatino, F Tomai); *Roma*, Aurelia Hospital, UOC Cardiologia (M Michisanti, F Tomai); *Campobasso*, Ospedale A. Cardarelli, UO Cardiologia e UTIC (A Viele, AR Colavita); *Lagonegro*, Ospedale Generale Di Zona, UO Cardiologia – UTIC (V Vertullo, A Colombo); *Lentini*, PO Lentini, UO Cardiologia con UTIC (S Arcidiacono, V Crisci); *Gallipoli*, Ospedale Civile Sacro Cuore di Gesù, UO Cardiologia UTIC (G Urso, GC Piccinni); *Lido di Camaiore*, Nuovo Ospedale Versilia, SC Cardiologia (J Del Meglio, G Casolo); *Roma*, Clinica Città di Roma, Cardiologia-UTIC (T Nejat); *Santa Maria Capua Vetere*, Ospedale San Giuseppe e Melorio, UOC Cardiologia UTIC (P Iodice); *Genova*, EO Ospedali Galliera, SC Cardiologia e UTIC (P Bernabò); *Polla*, PO Luigi Curto, UO Cardiologia-UTIC (A Paglia); *Saronno*, PO di Saronno, UOC Cardiologia (D Nassiacos); *Città di Castello*, PO Città di Castello, UO Cardiologia (MT De Santis); *Civitavecchia*, Ospedale Civile San Paolo, UO Cardiologia – UTIC (S Calcagno); *Sessa Aurunca*, PO San Rocco, UOC Cardiologia – UTIC (G Buompane); *San Fermo Della Battaglia*, Ospedale S. Anna, UOC Cardiologia (K Celentano).