

1 **Effectiveness of a sepsis programme in a resource-limited setting: a retrospective analysis of**
2 **data of a prospective observational study (Ubon-sepsis)**

3

4 Suchart Booraphun MD¹, Viriya Hantrakun PhD², Suwatthiya Siriboon MD¹, Chaiyaporn Boonsri
5 MD¹, Pulyamon Poomthong MD¹, Bung-Orn Singkaew BNS¹, Oratai Wasombat BNS¹, Parinya
6 Chamnan MD, PhD¹, Ratapum Champunot MD³, Kristina Rudd MD, MPH^{4,5}, Nicholas PJ. Day^{2,6}
7 MD², PhD, Arjen M. Dondorp MD, PhD^{2,6}, Prapit Teparrukkul MD¹, T. Eoin West MD, MPH^{5,7},
8 Direk Limmathurotsakul MD, PhD^{2,6,8}

9

10 Short Title: Sepsis Fast Track Thailand

11

12 ¹Sunpasitthiprasong Hospital, Ubon Ratchathani, Thailand

13 ²Mahidol Oxford Tropical Medicine Research Unit, Faculty of Tropical Medicine, Mahidol
14 University, Bangkok, Thailand

15 ³Department of Internal Medicine, Buddhachinaraj Phitsanulok Hospital, Phitsanulok, Thailand

16 ⁴Department of Critical Care Medicine, University of Pittsburgh, Pittsburgh, Pennsylvania, USA

17 ⁵Division of Pulmonary, Critical Care, and Sleep Medicine, University of Washington, Seattle,
18 United States

19 ⁶Centre for Tropical Medicine and Global Health, Nuffield Department of Medicine, University
20 of Oxford, Churchill Hospital, Oxford, United Kingdom

21 ⁷Department of Microbiology and Immunology, Faculty of Tropical Medicine, Mahidol
22 University, Bangkok, Thailand

23 ⁸Department of Tropical Hygiene, Faculty of Tropical Medicine, Mahidol University, Bangkok,
24 Thailand

25 **Supplementary Table 1 | Criteria used to systematically enroll patients into Sepsis Fast Track**26 **(SFT) upon admission**27 **1. Present with 2 or more of below Signs of systemic inflammatory response syndrome**
28 **(SIRS)**

- 29
- Body temperature > 38.3 °C or < 36.0 °C
 - Heart rate > 90 bpm
 - Respiratory rate > 20 pm or PaCO₂ < 32 mmHg
 - WBC > 12,000 /μL or < 4,000 /μL or Band forms > 10%

33 **2. Suspected sources of infection**

- 34
- Pneumonia
 - Urinary track infection
 - Intra-abdominal infection
 - Skin and soft tissue infection
 - CNS infection
 - Others infections or unspecified source of infection

40 **3. Diagnostic criteria for severe sepsis:** patient met criteria in no 1 and 2 and has at least
41 one of the following criteria

- 42
- Mottled skin
 - Capillary refilling time ≥ 3 seconds
 - Urine output < 0.5 ml/kg/hour
 - Abrupt change in mental status
 - Acute respiratory failure
 - Platelet count < 100,000 /μL
 - Disseminated intravascular coagulation
 - Lactate > 2 mmol/L
 - SBP < 90 mmHg or MAP < 65 mmHg

51 **4. Diagnostic criteria for septic shock:** patient who are severe sepsis and has at least 1 of
52 the following criteria

- 53
- SBP < 90 mmHg or MAP < 65 mmHg after crystalliod administration ≥ 40-60 ml/kg of body weight OR after colloid administration ≥ 20-30 ml/kg of body weight
 - Require administration of dopamine > 5μg/kg of BW/min or norepinephrine/epinephrine > 0.02 μg/kg of BW/min to maintain MAP to be > 65 mmHg

57

58 **Supplementary Table 2 | Systemic manifestation of infection criteria used for enrollment in**59 **Ubon-Sepsis Cohort**60 **General parameters**

- 61 1. Fever or hypothermia (Core body temperature defined as > 38.3 °C or < 36.0 °C)
- 62 2. Tachycardia (heart rate > 90 beats per minute)
- 63 3. Tachypnea (respiratory rate > 20 per minute)
- 64 4. Altered mental status with Glasgow Coma Score (GCS) < 15 or < 10 if intubated
- 65 5. Hyperglycemia (plasma glucose > 140 mg/dL) in the absence of diabetes

66 **Inflammatory parameters**

- 67 6. Leukocytosis (white blood cell count $> 12,000/\mu\text{L}$), leukopenia (white blood cell count $< 4000/\mu\text{L}$) or immature forms $> 10\%$
- 69 7. Plasma C-reactive protein > 2 SD above the normal value
- 70 8. Plasma procalcitonin > 2 SD above the normal value

71 **Hemodynamic parameters**

- 72 9. Arterial hypotension (systolic blood pressure (SBP) < 90 mmHg, mean arterial pressure (MAP) < 70 mmHg, or SBP decrease > 40 mmHg)

74 **Organ dysfunction parameters**

- 75 10. Low oxygen saturation determined by pulse oximetry ($\text{SpO}_2 < 95\%$) determined by pulse oximetry
- 77 11. Arterial hypoxemia ($\text{PaO}_2 / \text{FIO}_2 < 300$)
- 78 12. Acute oliguria (urine output < 0.5 mL/kg/hr or 45 mmol/L for 2 hours)
- 79 13. Creatinine increase > 0.5 mg/dL
- 80 14. Coagulation abnormalities (international normalised ratio > 1.5 or activated partial thromboplastin time > 60 seconds)
- 82 15. Thrombocytopenia (Platelet count $< 100,000$ cells/ μL)
- 83 16. Ileus (absent bowel sounds)
- 84 17. Hyperbilirubinaemia (plasma total bilirubin > 4 mg/dL)

85 **Tissue perfusion parameters**

- 86 18. Hyperlactatemia (> 1 mmol/L)
- 87 19. Decreased capillary refill or mottling
- 88 20. Significant edema or positive fluid balance

89

90 **Supplementary Table 3 | Factors associated with 28-day mortality using multivariable Cox**
 91 **proportional hazards model**

Variables	Died (n=779)	Survived (n=3027)	Adjusted hazard ratio (95% CI)	P value
SFT group¹	205 (26%)	698 (23%)	0.72 (0.58-0.88)	0.001
Male gender	445 (57%)	698 (23%)	0.87 (0.75-1.01)	0.06
Age group (years) (n [%])				
• 18-40	59 (8%)	688 (23%)	1	<0.001
• >40-60	222 (29%)	930 (31%)	1.72 (1.28-2.30)	
• >60-70	159 (20%)	568 (19%)	2.10 (1.54-2.86)	
• >70	339 (44%)	841 (28%)	3.41 (2.57-4.53)	
Transferred from other hospital	715 (92%)	2595 (86%)	1.14 (0.88-1.49)	0.33
Modified SOFA score (median, IQR)	6 (4-9)	4 (3-6)	1.23 (1.21-1.26)	<0.001
Comorbidities				
• Diabetes mellitus	205 (26%)	602 (20%)	1.06 (0.90-1.26)	0.47
• Chronic kidney disease	141 (18%)	379 (13%)	1.22 (1.01-1.48)	0.04
• Liver disease	39 (5%)	85 (3%)	1.27 (0.91-1.76)	0.16
• Malignancy	24 (3%)	36 (1%)	2.64 (1.75-3.99)	<0.001
Blood culture positive for pathogenic organisms	190 (24%)	332 (11%)	1.83 (1.55-2.17)	<0.001
Year				
• 2013	165 (21%)	637 (21%)	1	0.30
• 2014	183 (23%)	651 (22%)	1.03 (0.83-1.27)	
• 2015	207 (27%)	808 (27%)	1.05 (0.84-1.31)	
• 2016 ²	224 (29%)	931 (31%)	0.88 (0.70-1.11)	
Direct admission to the ICU	128 (16%)	170 (6%)	1.68 (1.36-2.06)	<0.001

92 ¹ Enrolled in the Sepsis Fast Track (SFT) programme

93 ² Included 28 patients in 2017

94

95 **Supplementary Table 4 | Factors associated with 28-day mortality using multivariable Cox**
 96 **proportional hazards model without a variable of the direct admission to the ICU**

Variables	Died (n=779)	Survived (n=3027)	Adjusted hazard ratio (95% CI)	P value
SFT group¹	205 (26%)	698 (23%)	0.77 (0.63-0.94)	0.01
Male gender	445 (57%)	698 (23%)	0.86 (0.74-1.00)	0.05
Age group (years) (n [%])				
• 18-40	59 (8%)	688 (23%)	1	<0.001
• >40-60	222 (29%)	930 (31%)	1.69 (1.26-2.26)	
• >60-70	159 (20%)	568 (19%)	2.07 (1.52-2.81)	
• >70	339 (44%)	841 (28%)	3.32 (2.50-4.41)	
Transferred from other hospital	715 (92%)	2595 (86%)	1.16 (0.89-1.52)	0.26
Modified SOFA score (median, IQR)	6 (4-9)	4 (3-6)	1.25 (1.22-1.27)	<0.001
Comorbidities				
• Diabetes mellitus	205 (26%)	602 (20%)	1.08 (0.91-1.27)	0.39
• Chronic kidney disease	141 (18%)	379 (13%)	1.20 (0.99-1.45)	0.07
• Liver disease	39 (5%)	85 (3%)	1.24 (0.89-1.72)	0.20
• Malignancy	24 (3%)	36 (1%)	2.52 (1.67-3.81)	<0.001
Blood culture positive for pathogenic organisms	190 (24%)	332 (11%)	1.83 (1.54-2.16)	<0.001
Year				
• 2013	165 (21%)	637 (21%)	1	0.34
• 2014	183 (23%)	651 (22%)	0.98 (0.79-1.21)	
• 2015	207 (27%)	808 (27%)	1.01 (0.81-1.26)	
• 2016 ²	224 (29%)	931 (31%)	0.85 (0.68-1.07)	

97 ¹ Enrolled in the Sepsis Fast Track (SFT) programme

98 ² Included 28 patients in 2017

99 **Supplementary Table 5 | Factors associated with 28-day mortality using logistic**
 100 **multivariable model**

Variables	Died (n=779)	Survived (n=3027)	Adjusted odds ratio (95% CI)	P value
SFT group¹	205 (26%)	698 (23%)	0.61 (0.48-0.79)	<0.001
Male gender	445 (57%)	698 (23%)	0.88 (0.73-1.06)	0.18
Age group (years) (n [%])				
• 18-40	59 (8%)	688 (23%)	1	<0.001
• >40-60	222 (29%)	930 (31%)	1.91 (1.36-2.66)	
• >60-70	159 (20%)	568 (19%)	2.54 (1.78-3.63)	
• >70	339 (44%)	841 (28%)	4.76 (3.43-6.59)	
Transferred from other hospital	715 (92%)	2595 (86%)	1.21 (0.89-1.65)	0.23
Modified SOFA score (median, IQR)	6 (4-9)	4 (3-6)	1.30 (1.26-1.34)	<0.001
Comorbidities				
• Diabetes mellitus	205 (26%)	602 (20%)	1.12 (0.91-1.39)	0.29
• Chronic kidney disease	141 (18%)	379 (13%)	1.20 (0.94-1.53)	0.13
• Liver disease	39 (5%)	85 (3%)	1.34 (0.85-2.10)	0.21
• Malignancy	24 (3%)	36 (1%)	3.65 (2.05-6.51)	<0.001
Blood culture positive for pathogenic organisms	190 (24%)	332 (11%)	2.08 (1.66-2.61)	<0.001
Year				
• 2013	165 (21%)	637 (21%)	1	0.64
• 2014	183 (23%)	651 (22%)	1.05 (0.80-1.37)	
• 2015	207 (27%)	808 (27%)	1.05 (0.80-1.38)	
• 2016 ²	224 (29%)	931 (31%)	0.91 (0.69-1.21)	
Admitted directly to an ICU upon admission	128 (16%)	170 (6%)	1.95 (1.45-2.62)	<0.001

101 ¹ Enrolled in the Sepsis Fast Track (SFT) programme

102 ² Included 28 patients in 2017

103

104 **Supplementary Table 6 | Factors associated with 28-day mortality using logistic**
 105 **multivariable model without a variable of the direct admission to the ICU**

Variables	Died (n=779)	Survived (n=3027)	Adjusted odds ratio (95% CI)	P value
SFT group¹	205 (26%)	698 (23%)	0.67 (0.53-0.86)	0.002
Male gender	445 (57%)	698 (23%)	0.87 (0.73-1.05)	0.14
Age group (years) (n [%])				
• 18-40	59 (8%)	688 (23%)	1	<0.001
• >40-60	222 (29%)	930 (31%)	1.85 (1.33-2.58)	
• >60-70	159 (20%)	568 (19%)	2.44 (1.71-3.46)	
• >70	339 (44%)	841 (28%)	4.55 (3.29-6.28)	
Transferred from other hospital	715 (92%)	2595 (86%)	1.23 (0.90-1.68)	0.19
Modified SOFA score (median, IQR)	6 (4-9)	4 (3-6)	1.32 (1.28-1.36)	<0.001
Comorbidities				
• Diabetes mellitus	205 (26%)	602 (20%)	1.16 (0.94-1.43)	0.17
• Chronic kidney disease	141 (18%)	379 (13%)	1.17 (0.92-1.49)	0.20
• Liver disease	39 (5%)	85 (3%)	1.31 (0.84-2.06)	0.23
• Malignancy	24 (3%)	36 (1%)	3.49 (1.95-6.24)	<0.001
Blood culture positive for pathogenic organisms	190 (24%)	332 (11%)	2.08 (1.67-2.61)	<0.001
Year				
• 2013	165 (21%)	637 (21%)	1	0.70
• 2014	183 (23%)	651 (22%)	1.00 (0.77-1.31)	
• 2015	207 (27%)	808 (27%)	1.01 (0.77-1.33)	
• 2016 ²	224 (29%)	931 (31%)	0.89 (0.67-1.17)	

106 ¹ Enrolled in the Sepsis Fast Track (SFT) programme

107 ² Included 28 patients in 2017

108

109 **Supplementary Table 7 | Factors associated with 28-day mortality using multivariable Cox**
 110 **proportional hazards model in 2,170 patients enrolled into the study after the**
 111 **implementation of the Sepsis Fast Track (SFT) programme**

Variables	Died (n=431)	Survived (n=1739)	Adjusted hazard ratio (95% CI)	P value
SFT group	205 (48%)	698 (40%)	0.68 (0.55-0.84)	<0.001
Male gender	254(59%)	992 (57%)	0.89 (0.73-1.09)	0.26
Age group (years) (n [%])				
• 18-40	30 (7%)	363(21%)	1	<0.001
• >40-60	125 (29%)	502 (29%)	1.97 (1.31-2.95)	
• >60-70	85 (20%)	359 (21%)	1.97 (1.28-3.03)	
• >70	191 (44%)	515 (30%)	3.33 (2.24-4.95)	
Transferred from other hospital	406 (94%)	1513 (87%)	1.49 (0.99-2.26)	0.06
Modified SOFA score (median, IQR)	7 (5-10)	4 (3-6)	1.24 (1.21-1.28)	<0.001
Comorbidities				
• Diabetes mellitus	122 (28%)	377(22%)	1.08 (0.87-1.35)	0.49
• Chronic kidney disease	84 (19%)	242 (14%)	1.23 (0.96-1.58)	0.11
• Liver disease	22 (5%)	57 (3%)	1.10 (0.71-1.70)	0.68
• Malignancy	19 (4%)	27 (2%)	2.90 (1.81-4.63)	<0.001
Blood culture positive for pathogenic organisms	110(26%)	225 (13%)	1.64 (1.31-2.05)	<0.001
Year				
• 2015	207 (48%)	808 (46%)	1	0.08
• 2016	224 (52%)	931 (54%)	0.84 (0.69-1.02)	
Direct admission to the ICU	85 (20%)	124 (7%)	1.78 (1.37-2.32)	<0.001

112

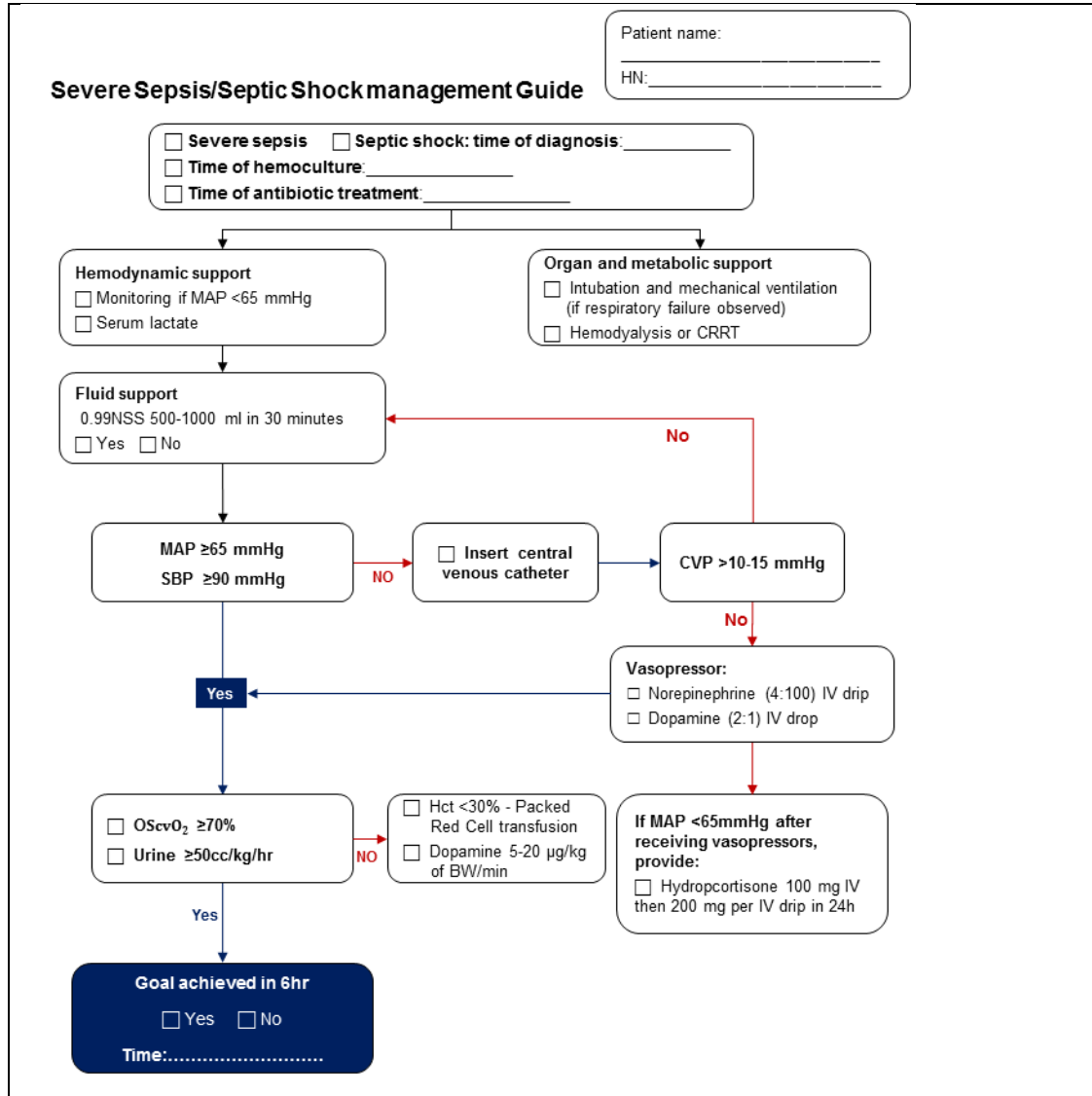
113

114 **Supplementary Figure 1 | Preprinted recommended doctor orders for sepsis fast track**
 115 **programme used at the Emergency Department at Sunpasitthiprasong Hospital**
 116 **from 1 January 2015**

SAPPASITTHIPRASONG HOSPITAL						
DOCTOR'S ORDER SHEET						
(Rev. 2: พ.ศ. 48)						
FFM	PROGRESS NOTE	Date Time	ORDER FOR ONE DAY	Date Time	CONTINUOUS ORDER	Date of Sign
	ER NON TRAUMA		Dx. <input type="checkbox"/> Sepsis <input type="checkbox"/> Severe Sepsis <input type="checkbox"/> Septic Shock -Consult ICU Admit..... - CxR..... - EKG..... - DTX. Stat..... - Serum lactate..... - CBC, PT, PTT, U/A..... - BUN, Cr., E 'lyte..... - Liver Function Test,alb..... - HC x II stat at ER..... น. - HC x II at รพพ..... น. - V/S q 1 hr. x II then as usual - on O2 canular 3 LPM if O2 sat < 95 % - Retained Foley's cath - NSS 1,000 ml IV load..... in 10 min		- NPO - Record V/S, N/S, I/O Medication ชัก Hx แพทย์ <input type="checkbox"/> ไม่มี <input type="checkbox"/> มี..... ตรวจสอบ Hx แพทย์ ในHOMC <input type="checkbox"/> ไม่มี <input type="checkbox"/> มี.....	
	Time onset Date Time Onset Date Time E V M BP / HR T C Source of infection <input type="checkbox"/> Respiratory <input type="checkbox"/> GI <input type="checkbox"/> Skin, soft tissue <input type="checkbox"/> CNS		then IV drip ml/hr (30ml/kg) - Levophed IV drip ml/hr - Dopamine IV drip ml/hr <input type="checkbox"/> Ceftriaxone 2 gm IV stat น. <input type="checkbox"/> Cefazidione 2 gm IV stat น. <input type="checkbox"/> Cloxacilin 2 gm IV stat น. <input type="checkbox"/> Metronidazole 500 mg IV stat น. <input type="checkbox"/> Gentamicin 240 mg IV stat น. - Notify แพทย์รพพ			

117

118 **Supplementary Figure 2 | The Sepsis Fast Track sepsis resuscitation workflow used at the**
 119 **Emergency Department at Sunpasitthiprasong Hospital from 1 March 2016**



120
 121
 122