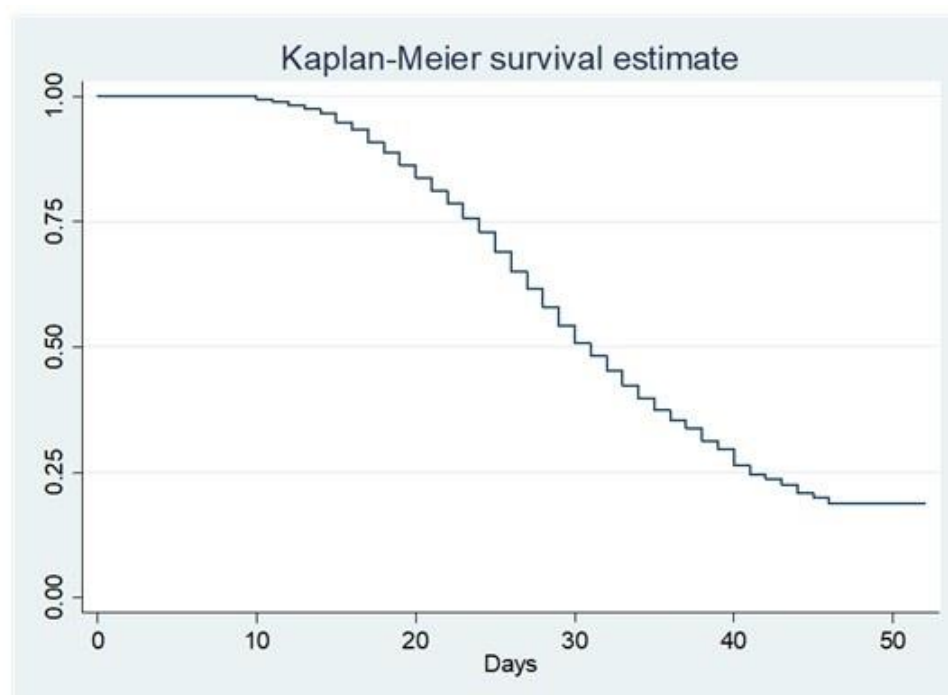


Supplementary material

Figure 1 - Estimate of time to first negative swab for SARS-CoV-2 with RT-PCR, using the Kaplan-Meier estimator, of all subjects diagnosed with COVID-19 by April 22, 2020, and resident in the Reggio Emilia province. The total cohort included 4538 subjects, of whom 4480 were included in the analysis. Of these, 1259 achieved viral clearance.



	Days					
	0	10	20	30	40	50
Number at risk	4480	3663	2166	695	109	3
First negative swab	0	25	446	586	189	13
Censored	0	879	1131	791	358	62

Table 1 – Sequence of RT-PCR assay results on all performed swabs and related frequencies in the 1162 COVID-19 patients included in the main analysis of the study. P = Positive, N=Negative, I= Undetermined

Sequence	N	%	Sequence	N	%	Sequence	N	%
P	191	16.4%	PPNPNN	4	0.3%	PNI	1	0.1%
PNN	183	15.7%	PPNPP	4	0.3%	PNIPP	1	0.1%
PPNN	139	12.0%	PINN	3	0.3%	PNNPNNN	1	0.1%
PP	121	10.4%	PPNIN	3	0.3%	PNNPNP	1	0.1%
PPP	74	6.4%	PPPNPNN	3	0.3%	PNNPPNN	1	0.1%
PPN	61	5.2%	PPPPN	3	0.3%	PNPNINN	1	0.1%
PPPNN	54	4.6%	NPNP	2	0.2%	PNPNNN	1	0.1%
PN	42	3.6%	PI	2	0.2%	PNPNPNN	1	0.1%
PPPP	40	3.4%	PIP	2	0.2%	PNPNPNP	1	0.1%
PPPN	26	2.2%	PIPNN	2	0.2%	PNPPN	1	0.1%
PPNP	21	1.8%	PIPP	2	0.2%	PNPPNPPP	1	0.1%
PNPNN	20	1.7%	PNPPPN	2	0.2%	PNPPP	1	0.1%
PNP	18	1.5%	PPNIP	2	0.2%	PPI	1	0.1%
PPPNP	14	1.2%	PPNNN	2	0.2%	PPINPNN	1	0.1%
NPNN	10	0.9%	PPPNIN	2	0.2%	PPNINN	1	0.1%
PPPPNN	11	0.9%	PPPPPN	2	0.2%	PPNPNP	1	0.1%
PPPPP	10	0.9%	PPPPPP	2	0.2%	PPNPPNN	1	0.1%
PNNN	7	0.6%	NIPPPPN	1	0.1%	PPPNINN	1	0.1%
NP	6	0.5%	NIPIP	1	0.1%	PPPNNI	1	0.1%
PPPPN	6	0.5%	NPN	1	0.1%	PPPNPPN	1	0.1%
NPPNN	5	0.4%	NPNIP	1	0.1%	PPPNPPNP	1	0.1%
PNPN	5	0.4%	NPNPNP	1	0.1%	PPPPNP	1	0.1%
PNIN	4	0.3%	NPP	1	0.1%	PPPPNPNI	1	0.1%
PNINN	4	0.3%	NPPN	1	0.1%	PPPPPN	1	0.1%
PNPP	4	0.3%	PIPN	1	0.1%	PPPPPNN	1	0.1%
PNPPNN	4	0.3%	PIPNINN	1	0.1%	PPPPPPP	1	0.1%
PPNP	4	0.3%	PIPPN	1	0.1%	Total	1162	100.0%