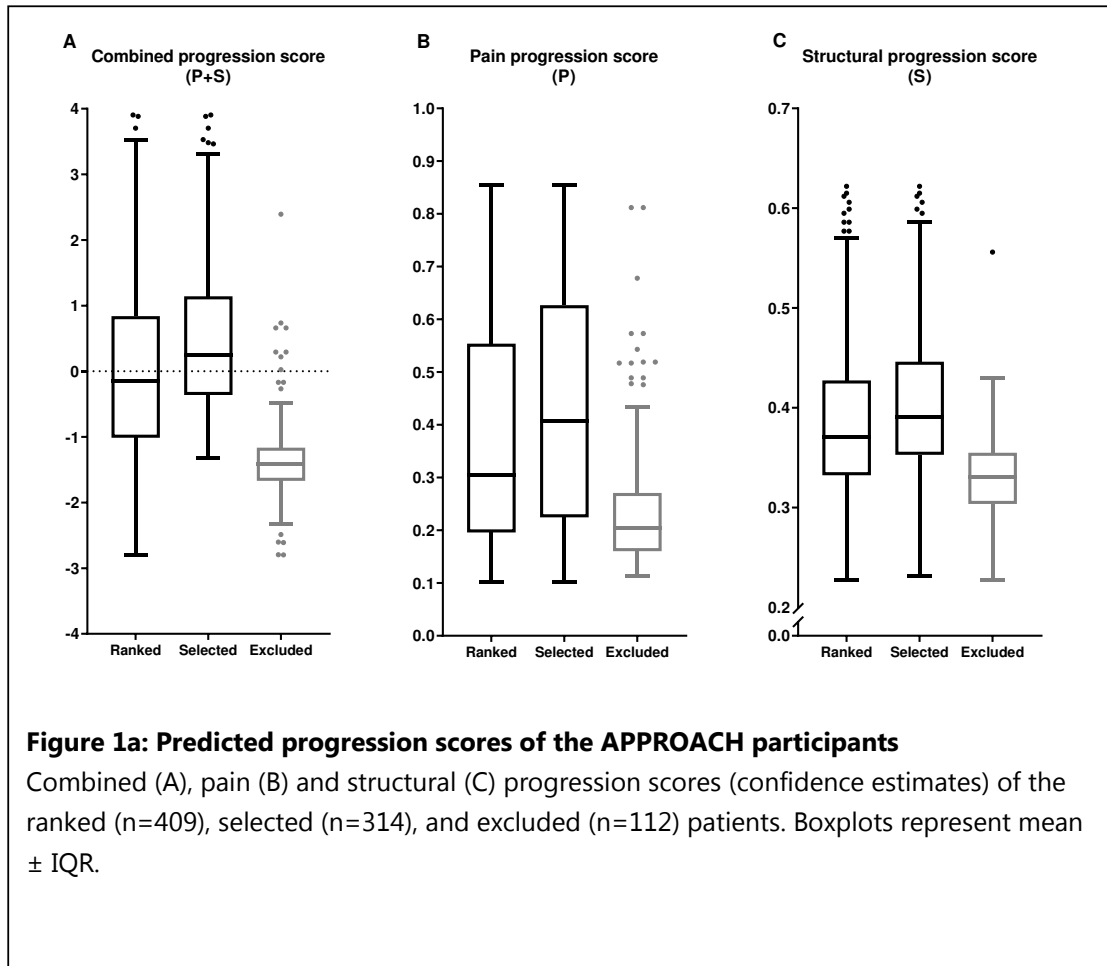


Supplementary file 3: Predicted progression scores for the individual centers

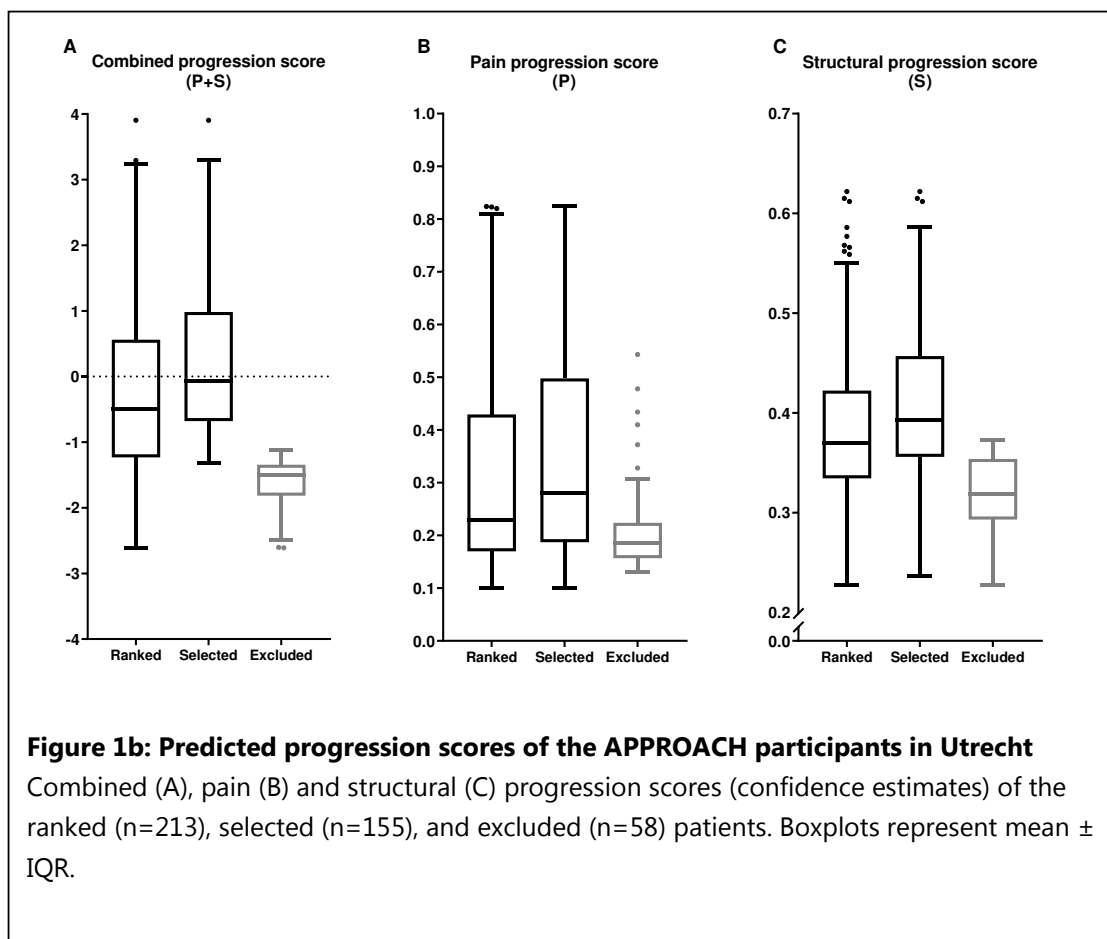
Total



	N	Combined score	P-score	S-score
Ranked	409	0.00 (1.299)	0.382 (0.215)	0.384 (0.079)
Selected	314	0.449 (1.112)	0.428 (0.217)	0.403 (0.079)
Excluded	112	-1.312 (0.760)	0.257 (0.142)	0.327 (0.044)

Predicted progression scores (confidence estimates) are given as mean (SD).

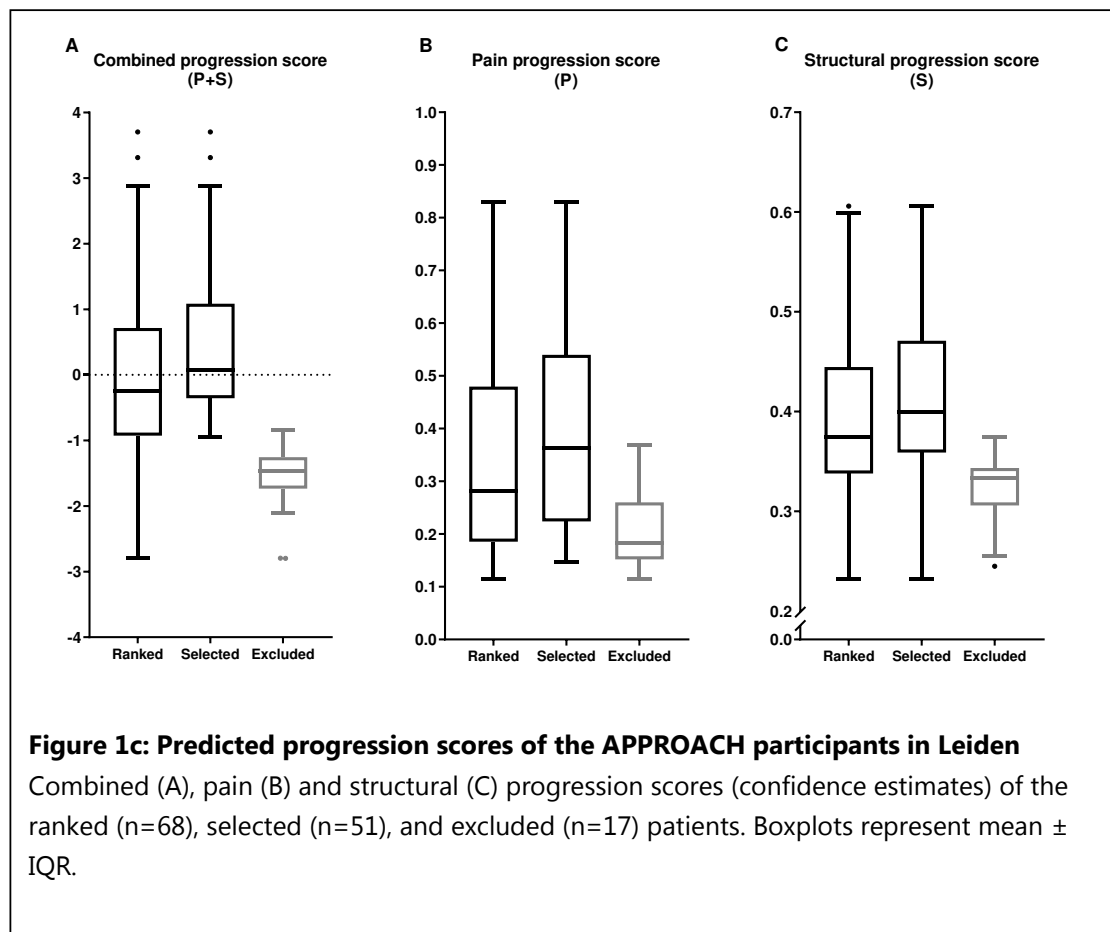
Utrecht



	N	Combined score	P-score	S-score
Ranked	213	-0.295 (1.265)	0.317 (0.193)	0.385 (0.078)
Selected	155	0.203 (1.109)	0.357 (0.207)	0.410 (0.075)
Excluded	58	-1.627 (0.386)	0.211 (0.086)	0.319 (0.038)

Progression scores are given as mean (SD).

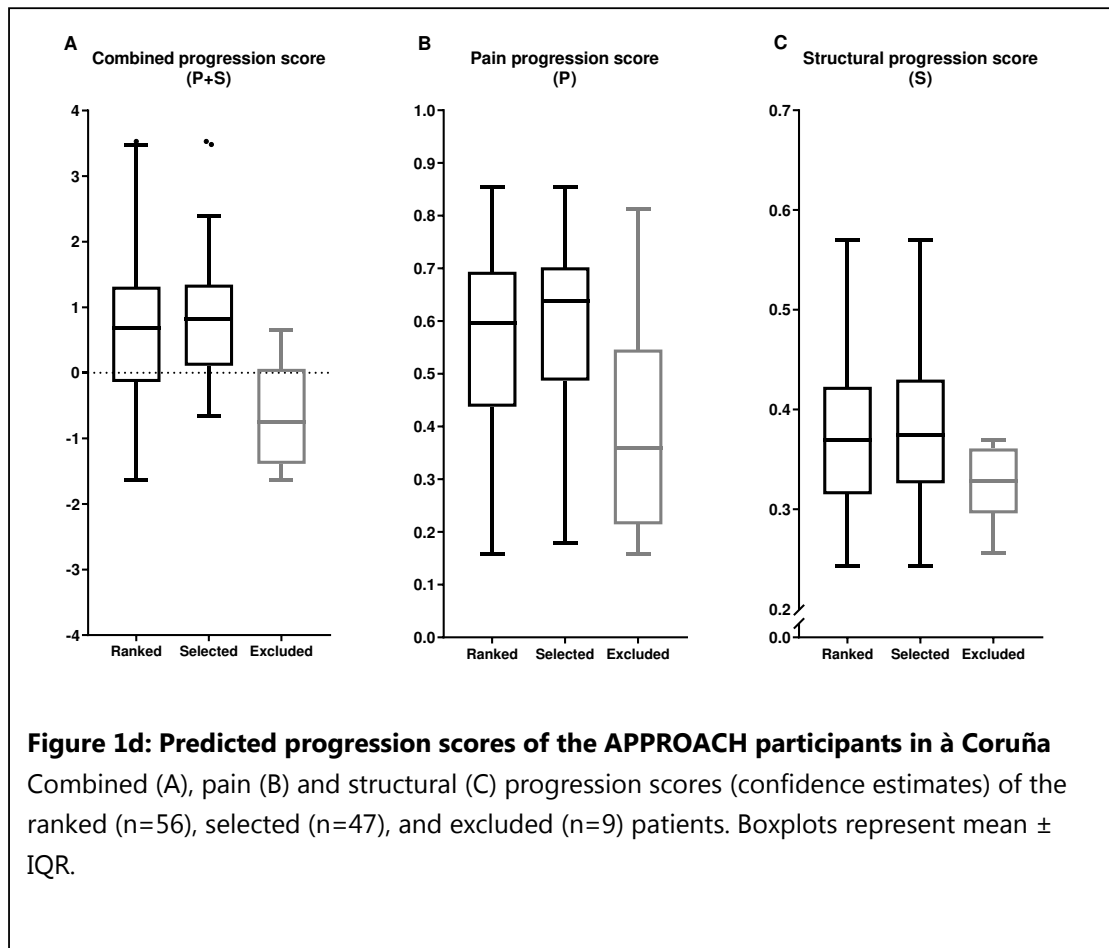
Leiden



	N	Combined score	P-score	S-score
Ranked	68	-0.045 (1.354)	0.355 (0.207)	0.391 (0.080)
Selected	51	0.468 (1.133)	0.403 (0.214)	0.414 (0.079)
Excluded	17	-1.584 (0.558)	0.208 (0.075)	0.324 (0.033)

Progression scores are given as mean (SD).

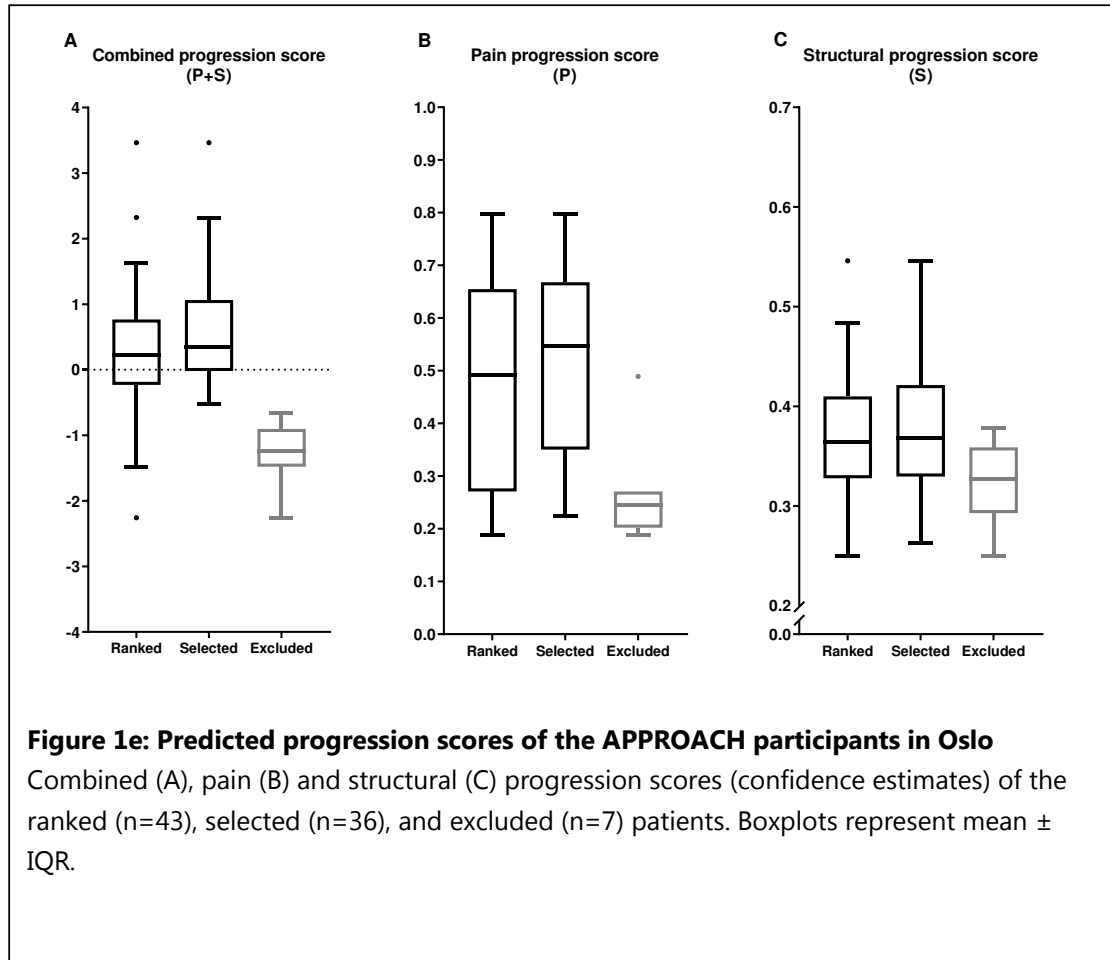
À Coruña



	N	Combined score	P-score	S-score
Ranked	56	0.653 (1.090)	0.559 (0.179)	0.371 (0.084)
Selected	47	0.899 (0.964)	0.588 (0.157)	0.380 (0.088)
Excluded	9	-0.631 (0.789)	0.403 (0.217)	0.327 (0.040)

Progression scores are given as mean (SD).

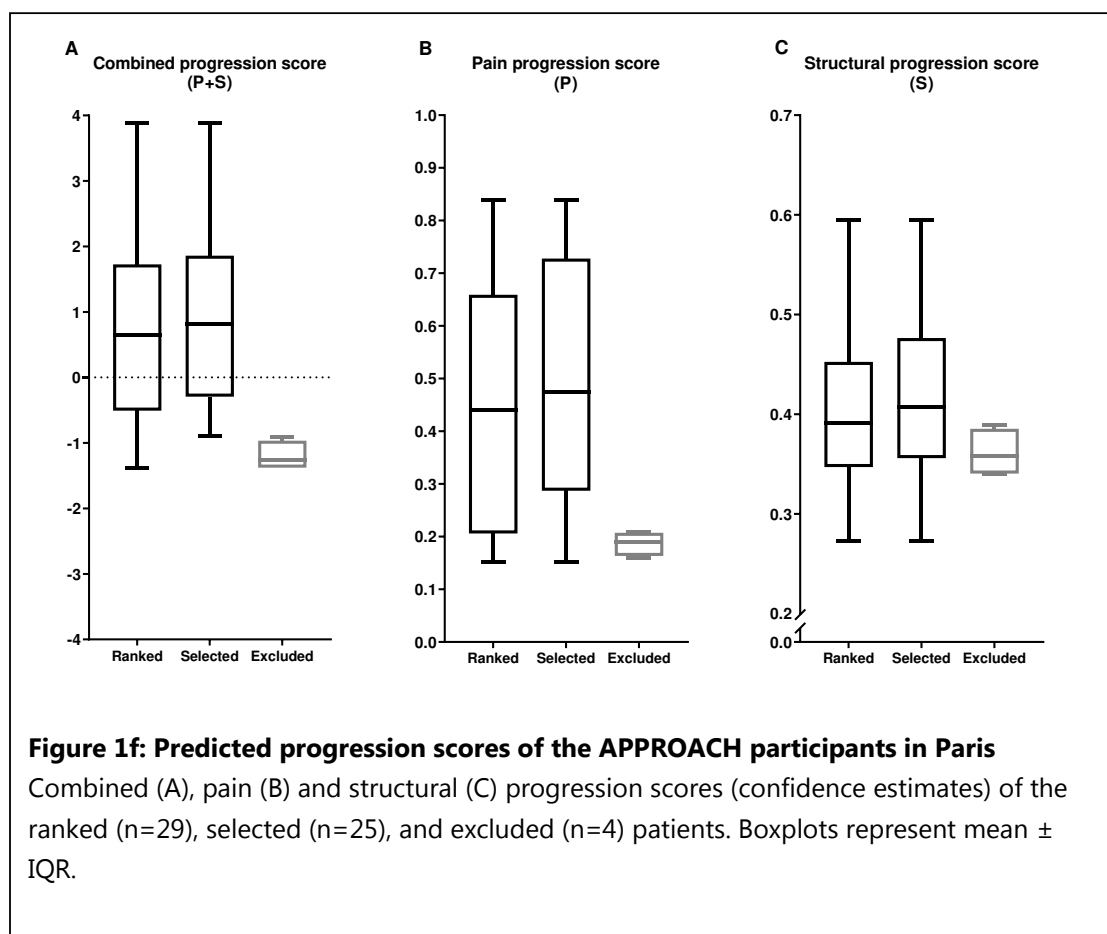
Oslo



	N	Combined score	P-score	S-score
Ranked	43	0.243 (1.023)	0.475 (0.192)	0.370 (0.061)
Selected	36	0.546 (0.796)	0.516 (0.179)	0.379 (0.060)
Excluded	7	-1.312 (0.505)	0.267 (0.103)	0.324 (0.042)

Progression scores are given as mean (SD).

Paris



	N	Combined score	P-score	S-score
Ranked	29	0.651 (1.456)	0.449 (0.239)	0.411 (0.089)
Selected	25	0.947 (1.342)	0.491 (0.231)	0.419 (0.093)
Excluded	4	-1.203 (0.225)	0.187 (0.023)	0.362 (0.024)

Progression scores are given as mean (SD).