

BMJ Open Retrospective cohort study of clinical characteristics of 2199 hospitalised patients with COVID-19 in New York City

Ishan Paranjpe ¹, Adam J Russak^{1,2}, Jessica K De Freitas^{1,3}, Anuradha Lala^{4,5}, Riccardo Miotto^{1,3}, Akhil Vaid^{1,3}, Kipp W Johnson^{1,3}, Matteo Danieleto^{1,3}, Eddy Golden^{1,3}, Dara Meyer³, Manbir Singh¹, Sulaiman Somani¹, Arjun Kapoor¹, Ross O'Hagan¹, Sayan Manna¹, Udit Nangia¹, Suraj K Jaladanki ¹, Paul O'Reilly^{3,6}, Laura M Huckins^{3,6}, Patricia Glowe^{1,3}, Arash Kia^{5,7}, Prem Timsina^{5,7}, Robert M Freeman^{5,7}, Matthew A Levin^{3,5,7,8}, Jeffrey Jhang⁹, Adolfo Firpo⁹, Patricia Kovatch¹⁰, Joseph Finkelstein⁵, Judith A Aberg^{11,12}, Emilia Bagiella^{4,5}, Carol R Horowitz^{5,12}, Barbara Murphy¹², Zahi A Fayad^{13,14}, Jagat Narula^{12,15}, Eric J Nestler^{16,17}, V Fuster¹⁸, Carlos Cordon-Cardo⁹, Dennis Charney^{19,20}, David L Reich²¹, Allan Just^{22,23}, Erwin P Bottinger¹, Alexander W Charney^{3,6}, Benjamin S Glicksberg^{1,3,6}, Girish N Nadkarni^{1,12,24} On behalf of Mount Sinai COVID Informatics Center (MSCIC)

To cite: Paranjpe I, Russak AJ, De Freitas JK, *et al.* Retrospective cohort study of clinical characteristics of 2199 hospitalised patients with COVID-19 in New York City. *BMJ Open* 2020;**10**:e040736. doi:10.1136/bmjopen-2020-040736

► Prepublication history and additional material for this paper is available online. To view these files, please visit the journal online (<http://dx.doi.org/10.1136/bmjopen-2020-040736>).

IP, AJR, JKDF and AL contributed equally.

EPB, AWC, BSG and GNN are joint senior authors.

Received 21 May 2020
Revised 24 October 2020
Accepted 26 October 2020



© Author(s) (or their employer(s)) 2020. Re-use permitted under CC BY-NC. No commercial re-use. See rights and permissions. Published by BMJ.

For numbered affiliations see end of article.

Correspondence to

Mr Ishan Paranjpe;
iparanjpe@berkeley.edu

ABSTRACT

Objective The COVID-19 pandemic is a global public health crisis, with over 33 million cases and 999 000 deaths worldwide. Data are needed regarding the clinical course of hospitalised patients, particularly in the USA. We aimed to compare clinical characteristic of patients with COVID-19 who had in-hospital mortality with those who were discharged alive.

Design Demographic, clinical and outcomes data for patients admitted to five Mount Sinai Health System hospitals with confirmed COVID-19 between 27 February and 2 April 2020 were identified through institutional electronic health records. We performed a retrospective comparative analysis of patients who had in-hospital mortality or were discharged alive.

Setting All patients were admitted to the Mount Sinai Health System, a large quaternary care urban hospital system.

Participants Participants over the age of 18 years were included.

Primary outcomes We investigated in-hospital mortality during the study period.

Results A total of 2199 patients with COVID-19 were hospitalised during the study period. As of 2 April, 1121 (51%) patients remained hospitalised, and 1078 (49%) completed their hospital course. Of the latter, the overall mortality was 29%, and 36% required intensive care. The median age was 65 years overall and 75 years in those who died. Pre-existing conditions were present in 65% of those who died and 46% of those discharged. In those who died, the admission median lymphocyte percentage was 11.7%, D-dimer was 2.4 µg/mL, C reactive protein was 162 mg/L and procalcitonin was 0.44 ng/mL. In those discharged, the admission median lymphocyte percentage

Strengths and limitations of this study

- Our cohort includes greater racial diversity as compared with previously published work.
- Largest hospitalised cohort of patients with COVID-19 in New York City.
- Limited by lack of access to clinical notes.
- Our study is limited by the short follow-up time period.
- Our study is limited by high censoring rate.

was 16.6%, D-dimer was 0.93 µg/mL, C reactive protein was 79 mg/L and procalcitonin was 0.09 ng/mL.

Conclusions In our cohort of hospitalised patients, requirement of intensive care and mortality were high. Patients who died typically had more pre-existing conditions and greater perturbations in inflammatory markers as compared with those who were discharged.

INTRODUCTION

The COVID-19 pandemic, caused by SARS-CoV-2, has held the world at a standstill with its virulence. As of 28 September 2020, over 33 million people have been affected, and >999 000 patients have died worldwide.¹ In addition to being highly contagious, the disease manifestations and clinical course are variable, spanning from asymptomatic status to severe acute respiratory distress syndrome with multiorgan failure and

death,^{2 3} acute kidney injury,^{4 5} acute myocardial injury⁶ and coagulopathy.^{7–11}

Reports from China and Italy provided early data on disease presentation and management^{12–14} but also revealed varying geographic disease expressions. Nearly one-third of the world's cases are now in the USA, and with nearly one-third of those cases located in New York, it represents the current epicentre of the COVID-19 pandemic.¹⁵

As the number of cases continues to climb, hospitals are being stretched well-beyond capacity while facing challenges of insufficient personal protective equipment, ventilators and workforce. Thus, understanding the clinical course of hospitalised patients with COVID-19 is critical for providing optimal patient care and to inform resource management in other locations across the USA likely to experience similar case surges.¹⁶ Data specifically examining differences in admission laboratory data in patients who died as compared with those who were ultimately discharged are lacking.

The Mount Sinai Healthcare System (MSHS) is the largest academic health system in New York City and serves as an ideal platform to better understand the evolving landscape of COVID-19 across a diverse population. Here, we present the largest case series of patients hospitalised with laboratory confirmed COVID-19 to date in the USA.

METHODS

Patient involvement

Patients and the public were not directly involved in the study design or implementation.

Study population

The MSHS serves a large, racially and ethnically diverse patient population. In this study, patient data came from five major hospitals: the Mount Sinai Hospital located in East Harlem, Manhattan; Mount Sinai Morningside located in Morningside Heights, Manhattan; Mount Sinai West located in Midtown and the West Side, Manhattan; Mount Sinai Brooklyn located in Midwood, Brooklyn and Mount Sinai Queens located in Astoria, Queens. We included patients who were at least 18 years of age, had a laboratory-confirmed COVID-19 infection and were admitted to any of the aforementioned five MSHS hospitals between 27 February and 00:00 hours 2 April 2020 (time of data freeze). A confirmed case of COVID-19 was defined by a positive reverse transcriptase polymerase chain reaction (RT-PCR) assay of a specimen collected via nasopharyngeal swab.

Detection of viral RNA

Nasopharyngeal swab specimens were taken from all patients and placed in 120–140 µL viral transport media (VTM). RNA was purified from specimens using either the Qiacube Connect (Qiagen), QIAamp Viral RNA mini kit (Qiagen), or the EZ1 DSP Virus kit (Qiagen).

SARS-CoV-2 RNA was detected using the qualitative cobas SARS-CoV-2 kit using the cobas 6800 system. For detection, a two-target RT-PCR using (1) SARS-CoV-2-specific primers and (2) pan-sarbecovirus primers as included in the cobas master mix. All assays were performed in a CLIA-certified high complexity laboratory at the Mount Sinai Health System.

Data collection

The dataset was obtained from different sources and aggregated by the New York Covid Informatics Taskforce (NYCIT) (further description of NYCIT is provided in online supplemental material 1). We obtained demographics, diagnosis codes (International Classification of Diseases-9/10-Clinical Modification (ICD-9/10-CM)) codes and procedures, as well as vital signs and laboratory measurements during hospitalisation. Demographics included age, sex and language, as well as race and ethnicity in the electronic health records (EHRs). Racial groups included white, black or African-American, Asian, Pacific Islander, other and unknown. Ethnic groups included non-Hispanic/Latino, Hispanic/Latino or unknown. All vital signs and laboratory values were obtained as part of indicated clinical care.

Definitions of pre-existing conditions

We defined a pre-existing condition as the presence of diagnosis codes associated with specific diseases. Diagnoses and corresponding ICD codes are provided in online supplemental table 1.

Definitions of outcomes

We assessed in-hospital mortality and admission to intensive care.

Statistical analysis

Results are reported as medians and IQRs or means and SD, as appropriate. Categorical variables were summarised as counts and percentages. Statistical significance was evaluated using a Wilcoxon test for continuous variables and a Fisher's exact test for categorical variables. We visualised length of stay (LOS) using a cumulative incidence function with competing risks for mutually exclusive events of in-hospital mortality or discharge. Patients who were still hospitalised at the time of data freeze were regarded as having a censored LOS. We assumed censored observations from patients with ongoing hospitalisation will not exceed the longest LOS in our dataset when calculating the restricted mean LOS. No imputation was made for missing data. Analysis was performed with R.¹⁷

Data availability

Please contact authors for information on data availability.

RESULTS

A consort diagram of included patients and outcomes is depicted in online supplemental figure 1.

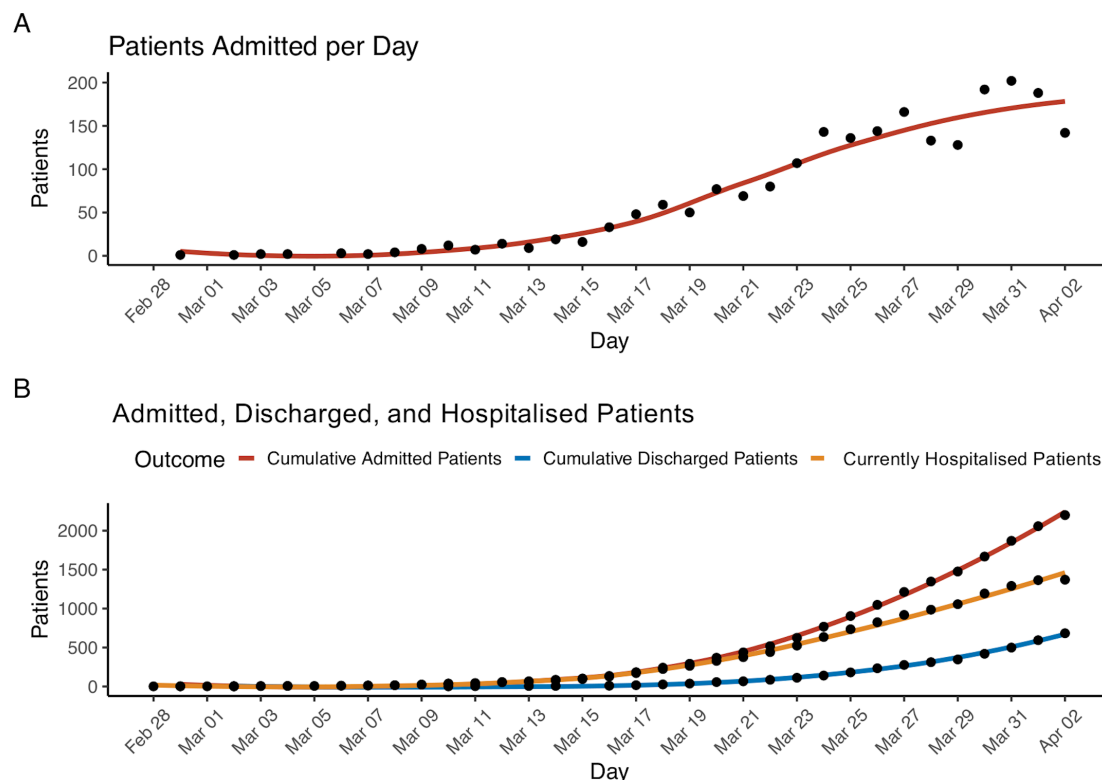


Figure 1 Hospital admissions of patients with COVID-19 within our cohort. Panel A: the number of total patients (n=2199) admitted each day to one of the hospitals for the duration of the study period. Panel B: the number of patients cumulatively admitted, cumulatively discharged or still hospitalised by day.

Demographic and clinical characteristics

From February 27 to 2 April 2020, 2199 patients with COVID-19 were hospitalised at one of five MSHS New York City hospitals. At the time of writing this report, 1121 (51%) patients remained hospitalised and 1078 (49%) completed their hospital course, with 768 discharges and 310 deaths. [Figure 1](#) details the number of patients admitted to the hospital per day and the total number of patients admitted cumulatively over time. During the study period, the trend of hospital admissions per day consistently increased.

Patient demographics, pre-existing conditions as well as vital signs and laboratory values at the time of admission are displayed in [table 1](#). Median age was 65 years with only 3% of patients <30 years and 36% over 70 years. The proportion of men was higher (59%) than women (41%) and 25% had their race identified as white, 25% as African-American and 3% as Asian. One-quarter of the population has their ethnicity identified as Hispanic/Latino. More than half of the population had at least one pre-existing condition. Specifically, 37% presented with a history of hypertension, 27% with diabetes mellitus, 16% with coronary artery disease, 10% with heart failure and 9% with chronic kidney disease.

Laboratory results and vital signs at presentation

Overall, 1558 (71%) patients were admitted through the emergency department. On hospital admission, 39% of all patients were tachycardic and 88% of all patients were

febrile ([table 1](#)). The median white blood cell count was 7K/ μ L and lymphocyte percentage was 13.8. The median serum creatinine was 1mg/dL. Select inflammatory markers performed in subsets of patients in accordance with clinical indication were markedly elevated on admission ([table 1](#)). Specifically, the median C reactive protein (CRP) was 110mg/L, lactate dehydrogenase (LDH) was 416U/L and ferritin was 714ng/L. Over one-quarter of patients (28%) had a procalcitonin level above 0.49ng/mL, and nearly half of patients (46%) had a procalcitonin level <0.15ng/mL. The median D-dimer was 1.31 μ g/mL; one-third of patients (33%) had a D-dimer >2 μ g/mL.

The frequencies of otherwise non-routine laboratory assessments ordered on day of admission increased over time and are shown in online supplemental figure 2. In contrast, haemoglobin, a routinely measured clinical lab value, was ordered at admission in the majority of patients without variation over the study period.

Clinical outcomes

Due to the unknown future clinical course of those patients hospitalised at the time of data freeze, below we present clinical characteristics of only those patients who had completed their hospital course. A total of 1078 COVID-19 confirmed hospitalised patients completed their hospital course (died or discharged alive) by the date of data freeze on 2 April 2020. Of these, 768 (71%) were discharged and 310 (29%) died in the hospital.

Table 1 Characteristics of hospitalised patients with COVID-19 at baseline (n=2199)

Characteristics of admission		N with characteristic available
Admission source, n (%)		
Emergency department	1558 (71)	2199
Other	641 (29)	
Race, n (%)		
White	554 (25.2)	2199
Black or African-American	543 (24.7)	
Asian	74 (3.4)	
Pacific Islander	25 (1.1)	
Other	912 (41.5)	
Unknown	91 (4.1)	
Ethnicity, n (%)		
Hispanic/Latino	576 (26.2)	2199
Non-Hispanic/Latino	1305 (59.4)	
Unknown	318 (14.5)	
Age, median (IQR)	65 (54–76)	2199
Age groups, n (%)		
18–30	73 (3.3)	2199
31–40	179 (8.1)	
41–50	225 (10.2)	
51–60	395 (18.0)	
61–70	527 (24.0)	
71–80	444 (20.2)	
81–90	274 (12.5)	
91 or older	82 (3.7)	
Sex, n (%)		
Male	1293 (58.8)	2199
Female	906 (41.2)	
Body mass index in kg/m ² , median (IQR)	28 (6)	1316
Medical history, n (%)		
Atrial fibrillation	156 (7.1)	2199
Asthma	180 (8.2)	
Coronary artery disease	343 (15.6)	
Cancer	151 (6.9)	
Chronic kidney disease	207 (9.4)	
Chronic obstructive pulmonary disease	113 (5.1)	
Diabetes mellitus	583 (26.5)	
Heart failure	217 (9.9)	
Hypertension	812 (37)	
Stroke	153 (7)	
Vital signs at hospital admission		
Heart rate in beats per min, median (IQR)	95 (83–108)	2181
Number of patients >100 beats per min, n (%)	857 (39)	
Temperature in °F, median (IQR)	99 (98.2–100.4)	2180
Number of patients >100.4°F, n (%)	1926 (88)	
Respiratory rate in breaths/min, median (IQR)	20 (18–21)	

Continued

Table 1 Continued

Characteristics of admission	N with characteristic available	
Systolic blood pressure in mm Hg, median (IQR)	130 (116–145)	2176
Diastolic blood pressure in mm Hg, median (IQR)	74 (65–82)	
Oxygen saturation, median (IQR)	95 (92–97)	2176
Admission laboratory parameters, median (IQR)		
White blood cell count in K/ μ L, median (IQR)	7 (5.2–9.9)	2029
Number of patients >10, n (%)	498 (25)	2029
Number of patients <4, n (%)	224 (11)	2029
Lymphocyte count in K/ μ L, median (IQR)	0.9 (0.7–1.3)	1888
Lymphocyte percentage, median (IQR)	13.8 (8.5–20.5)	1972
Haemoglobin g/dL, median (IQR)	131 (116–144)	2031
Platelet count in K/ μ L, median (IQR)	195 (151–253)	2028
Prothrombin time in s, median (IQR)	13.9 (13.2–15)	937
Activated partial thromboplastin time in s, median (IQR)	32 (29–36.1)	926
Serum sodium in mEq/L, median (IQR)	137 (134–140)	2015
Serum potassium in mEq/L, median (IQR)	4.2 (3.9–4.6)	2006
Serum creatinine in mg/dL, median (IQR)	1 (0.8–1.5)	2018
Aspartate aminotransferase in U/L, median (IQR)	42 (30–70.5)	1815
Alanine aminotransferase in U/L, median (IQR)	32 (19–56)	1025
Serum albumin in g/dL, median (IQR)	3.2 (2.8–3.6)	1848
Venous lactate in mmol/L, median (IQR)	1.5 (1.1–2)	775
Number of patients >1.5, n (%)	392 (51)	775
Inflammatory markers		
C reactive protein in mg/L, median (IQR)	110 (57.8–196)	1354
Ferritin in ng/L, median (IQR)	714 (324–1730)	1324
Procalcitonin in ng/mL, median (IQR)	0.18 (0.08–0.57)	1241
Number of patients >0.49, n (%)	344 (28)	1241
Number of patients <0.15, n (%)	573 (46)	1241
Lactate dehydrogenase in U/L, median (IQR)	416 (314–545)	1290
Creatine kinase in U/L, median (IQR)	199 (97–565)	502
D-dimer in μ g/mL, median (IQR)	1.31 (0.74–2.44)	1079
Number of patients >2.0, n (%)	352 (33)	1079
Required mechanical ventilation, n (%)	446 (20)	2199

Baseline values are defined as first values on hospitalisation. All continuous characteristics are in median (IQR) unless specified otherwise and all categorical characteristics are in number (percentage). The percentage is calculated with the number of patients who had the characteristic available as the denominator. For further clarity, the number in which that characteristic was available for is provided separately in adjacent column.

Estimates for mortality and need for intensive care unit (ICU) admissions over time are displayed in [figure 2](#).

The median LOS was 7.7 days, accounting for censoring of patients with ongoing hospitalisation. By the mean LOS (10.5 days), 45% of patients had been discharged, 17% had died and 38% were still hospitalised ([figure 2](#)). Demographics and admission laboratory measurements for patients who completed their hospital course are displayed in [table 2](#), stratified by mortality. The median age was significantly greater in those who died as compared with those who were discharged (75 years vs

59 years; $p<0.001$). Pre-existing conditions were present in 64% of those who died and 46% of those discharged. We observed a significantly greater prevalence of diabetes (34% vs 20%; $p=0.004$), chronic obstructive pulmonary disease (9% vs 4%; $p=0.002$), heart failure (21% vs 7%; $p<0.001$), stroke (10% vs 5%; $p=0.004$) and hypertension (45% vs 30%; $p<0.001$) in those who died as compared with those who were discharged. Prevalence of other comorbidities are provided in [table 2](#).

We present key laboratory markers at the time of hospital admission in subsets of patients for whom they

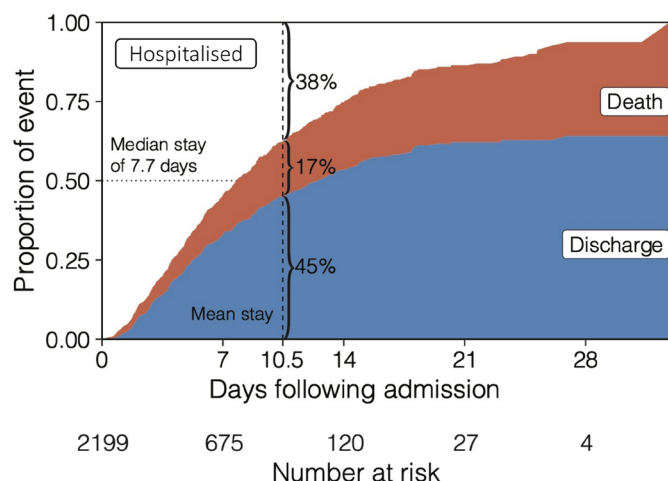


Figure 2 Cumulative incidence function displays the probability of mutually exclusive events of discharge (blue) or death (red) by a given day of hospitalisation, accounting for the changing number of patients at risk including censoring. The remaining portion (white) shows patients that are still hospitalised, where the median length of stay is 7.7 days.

were measured. Patients who died had a significantly lower median lymphocyte percentage (11.7% vs 16.6%; $p<0.001$) and greater aspartate aminotransferase (AST) (58.5 U/L vs 36 U/L; $p<0.001$), CRP (162 mg/L vs 79 mg/L; $p<0.001$), ferritin (798 ng/L vs 509 ng/L; $p<0.001$), LDH (517 U/L vs 347 U/L; $p<0.001$) and procalcitonin (0.44 ng/mL vs 0.09 ng/mL; $p<0.001$) as compared with those who were discharged (table 2). We also observed a significant elevation in D-dimer (56% $>2.0 \mu\text{g/mL}$ vs 21% $>2.0 \mu\text{g/mL}$; $p<0.001$) in those who died as compared with those who were discharged.

Patients requiring ICU admission

Of the 1078 patients who completed their hospital course, 385 (36%) required intensive care during their hospital stay. For these patients, vital signs and laboratory values immediately before transfer to intensive care are displayed in table 3, stratified by mortality outcome. Immediately before their ICU admission, patients who died were more likely to be tachycardiac (38% vs 19%; $p<0.001$) and hypotensive (22% vs 4%; $p<0.001$) as compared with those who were ultimately discharged. We also observed that patients who died had a lower median lymphocyte percentage (9.6% vs 16.6%) and greater serum creatinine (1.5 mg/dL vs 0.6 mg/dL; $p<0.001$), AST (62 U/L vs 35 U/L; $p<0.001$), CRP (220 mg/L vs 76 mg/L; $p<0.001$), ferritin (920 ng/L vs 503 ng/L; $p<0.001$), procalcitonin $>0.49 \text{ mg/mL}$ (59% vs 10%; $p<0.001$), LDH (513 U/L vs 333 U/L; $p<0.001$), CK (659 U/L vs 146 U/L; $p<0.001$) and D-dimer $>2 \mu\text{g/mL}$ (63% vs 22%; $p<0.001$) as compared with those who were discharged (table 3).

Outcomes by race

Including all individuals ($n=2199$), we then investigated survival probability stratified self-reported race and ethnicity by fitting a Cox proportional hazards model

adjusted for age and sex (see online supplemental figure 3). As compared with white individuals, we did not find a significant association of survival with self-reported black (HR=0.88; $p=0.37$), or other race (HR=1.12; $p=0.45$). We also did not find a significant association of survival with Hispanic ethnicity (HR=1.10; $p=0.50$).

DISCUSSION

The COVID-19 pandemic represents the greatest public health emergency in the modern world. Limited data, especially in the USA, exists to guide clinical care, resource management and risk stratification in hospitalised patients. Our study is of the case series of patients reported with confirmed COVID-19 in the USA. Previous reports were either from other countries, examined smaller cohorts, or were focused on critically ill patients.^{13 14 18–23} The present report provides a broad perspective on patients admitted with COVID-19 in both general medicine ward and intensive care settings. Our study presents key clinical differences from laboratory data available at time of admission and thus would aid clinical management decision-making early in the hospital course. Additionally, our health system serves a unique population representative of the ethnic and socio-economic diversity seen in both New York City and across the USA.

We highlight several key findings. Among the 1078 patients who completed their hospital course (discharge or in-hospital death), the overall mortality rate was 29% and 31% in patients who received ICU care. The overall case fatality rate likely represents an overestimation of the true disease mortality rate since patients who remained hospitalised at the date of data freeze were not included in this calculation. The mortality rate in intensive care is lower than previously described^{13 23–25} and may be reflective of early care escalation.

We observed that patients who died had a significantly higher median age with significantly more pre-existing conditions than those who were discharged. Although 25% of patients were febrile on admission, this may be an underestimation due to possible antipyretic use and/or selection bias. A substantial proportion of patients with COVID-19 displayed abnormal laboratory measurements at the time of admission. These included lymphopenia and elevated inflammatory markers such as D-dimer, CRP, LDH and ferritin. These trends persisted among those who died and/or received intensive care, both on admission and at the time of ICU transfer. If formal epidemiological analyses confirm these observations, early laboratory evaluation may be crucial in identifying patients suspected for COVID-19 prior to RT-PCR test result. It may also aid clinicians in identifying patients at high risk of decompensation, ICU admission and potentially even death. Early identification of high-risk patients could enable timely patient triage and improved resource allocation. Additional work is needed to develop real-time, accurate predictive models for risk stratification in

Table 2 Characteristics of hospitalised patients with COVID-19 by patients who had in-hospital mortality versus those who were discharged alive (n=1078)

	Patients with in-hospital mortality (n=310)	N with characteristic available	Patients who were discharged alive (n=768)	N with characteristic available	P value
Required mechanical ventilation, n (%)	165 (53)	310	14 (1.8)	768	<0.001
Time to ICU (hours), median (IQR)	11.0 (4.9–44.7)	121	12.6 (3.1–11.1)	264	<0.001
Race, n (%)					<0.001
White	98 (31.6)	310	216 (28.1)	768	
Black or African-American	71 (22.9)		185 (24.1)		
Asian	17 (5.5)		22 (2.9)		
Pacific Islander	1 (0.3)		7 (0.9)		
Other	111 (35.8)		310 (40.4)		
Unknown	12 (3.9)		28 (3.6)		
Ethnicity, n (%)					0.005
Hispanic/Latino	58 (18.7)	310	208 (27.1)	768	
Non-Hispanic/Latino	198 (63.9)		464 (60.4)		
Unknown	54 (17.4)		96 (12.5)		
Age, median (IQR)	75 (64–85)		59 (45–72)		<0.001
Age groups, n (%)					
18–30	1 (0.32)	310	53 (6.9)	768	
31–40	2 (0.65)		108 (14.1)		
41–50	17 (5.5)		100 (13.0)		
51–60	37 (11.9)		143 (18.6)		
61–70	66 (21.3)		157 (20.4)		
71–80	83 (26.8)		130 (16.9)		
80–90	75 (24.2)		62 (8.1)		
>90	29 (9.4)		15 (2.0)		
Sex, n (%)					0.16
Male	191 (61.6)	310	436 (56.8)	768	
Female	119 (38.4)		332 (43.2)		
Body mass index in kg/m ² , median (IQR)	32 (27–34)	241	28 (25–32)	627	<0.001
Previous medical history, n (%)					
Atrial fibrillation	43 (13.9)	768	42 (5.5)	768	0.91
Asthma	23 (7.4)		61 (7.9)		0.87
Coronary artery disease	83 (26.8)		84 (10.9)		<0.001
Cancer	24 (7.7)		40 (5.2)		0.147
Chronic kidney disease	41 (13.2)		54 (7)		0.002
Chronic obstructive pulmonary disease	28 (9)		31 (4)		0.002
Diabetes mellitus	105 (33.9)		151 (19.7)		<0.001
Heart failure	64 (20.6)		53 (6.9)		<0.001
Hypertension	140 (45.2)		233 (30.3)		<0.001
Stroke	32 (10.3)		40 (5.2)		0.004
Admission laboratory parameters					
White blood cell count in K/μL, median (IQR)	8.6 (5.9–12)	281	6.2 (4.7–8.2)	728	<0.001
Number of patients >10 K/μL, n (%)	105 (37)	281	101 (14)	728	<0.001
Number of patients <4 K/μL, n (%)	17 (6)	281	106 (15)	728	<0.001

Continued

Table 2 Continued

	Patients with in-hospital mortality (n=310)	N with characteristic available	Patients who were discharged alive (n=768)	N with characteristic available	P value
Haemoglobin in g/dL, median (IQR)	12.6 (10.9–14.3)	282	13.2 (11.9–14.4)	728	<0.001
Platelet count in K/ μ L, median (IQR)	185 (144–239)	282	193 (153–247)	726	0.070
Lymphocyte count K/ μ L, median (IQR)	0.9 (0.6–1.3)	248	1 (0.8–1.4)	689	<0.001
Lymphocyte percentage, median (IQR)	11.7 (6.6–18.6)	270	16.6 (11.7–24.2)	710	<0.001
Prothrombin time in s, median (IQR)	14.2 (13.6–16.3)	142	13.5 (13–14.4)	304	<0.001
Activated partial thromboplastin time in s, median (IQR)	32.9 (30.2–37.6)	140	31.4 (28.7–34.8)	302	0.001
Serum sodium in mEq/L, median (IQR)	138 (134–141)	284	137 (135–140)	708	0.059
Serum potassium in mEq/L, median (IQR)	4.4 (4–5)	288	4.1 (3.8–4.5)	706	<0.001
Serum creatinine in mg/dL, median (IQR)	1.3 (0.9–2.2)	288	0.9 (0.7–1.2)	710	<0.001
Aspartate aminotransferase in U/L, median (IQR)	58.5 (34–102)	246	36 (26–54)	628	<0.001
Alanine aminotransferase in U/L, median (IQR)	32 (19–58)	119	30 (19–52)	358	0.47
Serum albumin in g/dL, median (IQR)	3 (2.7–3.4)	255	3.4 (3–3.7)	635	<0.001
Venous lactate in mmol/L, median (IQR)	1.8 (1.3–2.6)	108	1.3 (1.1–1.8)	236	<0.001
Number of patients >1.5 mmol/L, n (%)	74 (69)	108	88 (37)	236	<0.001
Inflammatory markers					
C reactive protein in mg/L, median (IQR)	162 (75.7–266)	141	79.3 (37.5–144)	422	<0.001
Ferritin in ng/L, median (IQR)	798 (397–2020)	146	509 (235–987)	410	<0.001
Procalcitonin -in ng/mL, median (IQR)	0.44 (0.16–1.45)	138	0.09 (0.05–0.22)	392	<0.001
Number of patients >0.49 ng/mL, n (%)	67 (49)	138	46 (12)	392	<0.001
Number of patients <0.15 ng/mL, n (%)	34 (25)	138	263 (67)	392	<0.001
Lactate dehydrogenase in U/L, median (IQR)	517 (371–756)	134	347 (272–448)	419	<0.001
Creatine kinase in U/L, median (IQR)	472 (139–940)	74	154 (84–319)	126	<0.001
D-dimer in μ g/mL, median (IQR)	2.41 (1.18–3.79)	117	0.93 (0.58–1.61)	282	<0.001
Number of patients >2.0 μ g/mL, n (%)	66 (56)	117	59 (21)	282	<0.001

Continuous and categorical variables were compared using a Wilcoxon test and Fisher's exact test, respectively.

Baseline values are defined as first values on hospitalisation. All continuous characteristics are in median (IQR) unless specified otherwise and all categorical characteristics are in number (percentage). The percentage is calculated with the number of patients who had the characteristic available as the denominator. For further clarity, the number in which that characteristic was available for is provided separately in adjacent column.

ICU, intensive care unit.

COVID-19, particularly to elucidate the clinical utility of specific laboratory measurements.

Han *et al*²⁶ found a significant association of serum LDH and CRP with COVID-19 severity in patients from China.²⁶ As the number of cases rose quickly in New York City, MSHS hospitals served as early adopters, creating a COVID-19 order set in our EHR to streamline objective data gathering, facilitate more cohesive workflow among team members and minimise ancillary staff exposure by completing all necessary admission labs at one time. This laboratory order set included serum D-dimer, CRP, procalcitonin, ferritin and LDH. In turn, we observed an increase in these orders from the first day of admission

over the study period (see online supplemental figure 2). Given the abnormalities observed in patients who died, these laboratory measurements may be prognostic markers of disease severity or subsequent clinical course, although this requires further investigation. If confirmed, other health systems expecting impending case surges may consider similar workflows to promote improved healthcare delivery to affected patients.

We found a significantly higher procalcitonin level in individuals who died as compared with those who were discharged alive. Moreover, of the 2199 individuals in the study, 28% had a procalcitonin >0.49. In the context of COVID-19, an elevated procalcitonin may signify a

Table 3 Selected characteristics for hospitalised patients with COVID-19 before transfer to intensive care stratified by in-hospital mortality (n=385)

	Patients with in-hospital mortality who required intensive care (n=121)	N with characteristic available	Patients who were discharged alive but required intensive care (n=264)	N with characteristic available	P value
Required mechanical ventilation, n (%)	95 (79)	121	11 (4)	264	<0.001
Vital signs, n (%)					
Number of patients with heart rate >100 beats per min, n (%)	45 (38)	118	51 (19)	264	<0.001
Number of patients with temperature >100.4°F, n (%)	107 (91)		228 (86)		0.370
Systolic blood pressure <100 mm Hg, n (%)	27 (22)		10 (4)		<0.001
Oxygen saturation, median (IQR)	92 (88–95)		95 (92–97)		<0.001
Admission laboratory parameters, median (IQR)					
White blood cell count in K/μL, median (IQR)	10.1 (6.3–14.7)	111	5.6 (4.3–7.7)	258	<0.001
Number of patients >10 K/μL, n (%)	58 (52)	111	28 (11)	258	<0.001
Number of patients <4 K/μL, n (%)	6 (5)	111	54 (21)	258	<0.001
Haemoglobin in g/dL, median (IQR)	12.1 (10.4–13.8)	111	13 (11.5–14.2)	258	<0.001
Platelet count in K/μL, median (IQR)	185 (146–230)	111	191 (153–248)	258	0.308
Lymphocyte count in K/μL, median (IQR)	0.8 (0.6–1.25)	91	1 (0.75–1.4)	239	0.003
Lymphocyte percentage, median (IQR)	9.6 (5.5–17.2)	103	16.6 (12–26.4)	251	<0.001
Prothrombin time in s, median (IQR)	14.9 (13.8–16.7)	63	13.7 (13.2–14.7)	97	<0.001
Activated partial thromboplastin time in s, median (IQR)	34 (30.6–38.2)	62	31.4 (29.4–35)	96	0.027
Serum sodium in mEq/L, median (IQR)	137 (135–140)	114	137 (135–140)	237	0.449
Serum potassium in mEq/L, median (IQR)	4.3 (4–4.9)	112	4.1 (3.8–4.4)	237	<0.001
Serum creatinine in mg/dL, median (IQR)	1.5 (0.94–2.4)	114	0.8 (0.7–1.1)	261	<0.001
Aspartate aminotransferase in U/L, median (IQR)	62 (36.2–105)	106	35 (26–54.5)	236	<0.001
Alanine aminotransferase in U/L, median (IQR)	28 (16–54)	56	28 (19–52)	215	0.514
Serum albumin in g/dL, median (IQR)	2.7 (2.3–3.2)	107	3.3 (2.9–3.6)	236	<0.001
Venous lactate in mmol/L, median (IQR)	1.55 (1.02–2.15)	34	1.3 (1.1–1.7)	49	0.157
Number of patients >1.5 mmol/L, n (%)	19 (56)	34	20 (41)	49	0.157
Inflammatory markers					
C reactive protein in mg/L, median (IQR)	220 (113–297)	80	75.6 (36.2–134)	182	<0.001
Ferritin in ng/L, median (IQR)	920 (470–2220)	76	503 (266–1020)	187	<0.001
Procalcitonin in ng/mL, median (IQR)	1.02 (0.20–4.5)	58	0.08 (0.05–0.22)	163	<0.001
Number of patients >0.49 ng/mL, n (%)	34 (59)	58	17 (10)	163	<0.001
Number of patients <0.15 ng/mL, n (%)	11 (19)	58	106 (65)	163	<0.001
Lactate dehydrogenase in U/L, median (IQR)	513 (399–729)	67	333 (274–422)	188	<0.001
Creatine kinase in U/L, median (IQR)	659 (305–1450)	42	146 (60–268)	73	<0.001
D-dimer in μg/mL, median (IQR)	2.7 (1.6–5.8)	57	0.83 (0.5–1.6)	127	<0.001
Number of patients >2.0 μg/mL, n (%)	36 (63)	57	28 (22)	127	<0.001

Continued

Table 3 Continued

	Patients with in-hospital mortality who required intensive care (n=121)	N with characteristic available	Patients who were discharged alive but required intensive care (n=264)	N with characteristic available	P value
--	---	---------------------------------	--	---------------------------------	---------

Continuous and categorical variables were compared using a Wilcoxon test and Fisher's exact test, respectively.

All values are closest values in 24 hours prior to ICU admission. All continuous characteristics are in median (IQR) unless specified otherwise and all categorical characteristics are in number (percentage). The percentage is calculated with the number of patients who had the characteristic available as the denominator. For further clarity, the number in which that characteristic was available for is provided separately in adjacent column.

ICU, intensive care unit.

superimposed bacterial infection, but may also be a marker of acute respiratory distress syndrome or a result of upregulated cytokine production secondary to respiratory failure. Additionally, we found that individuals who died in the ICU had higher procalcitonin levels, supporting previous work demonstrating that patients with more severe COVID-19 infections have higher procalcitonin levels.^{22 27}

The clinical characteristics of our cohort were largely similar to other large cohorts of patients with COVID-19 from China^{2 22} and Italy. Specifically, patients in our dataset were elderly and had a male predominance, similar to previous reports. There was also a high prevalence of comorbid conditions, including hypertension and diabetes mellitus. Similar to an early report from Wuhan, patients largely had a normal procalcitonin at admission, but individual requiring ICU care had a higher procalcitonin level. However, as compared studies from Wuhan, China²² and Genoa, Italy,¹⁴ and New York City,²⁸ our cohort had a significantly lower prevalence of lymphopenia at admission.

Our study should be considered in light of several limitations. Since COVID-19 testing is frequently repeated in hospitalised patients and initial testing may result in false negatives, we are unable to determine whether patients developed their infection during or before hospital admission. Furthermore, COVID-19 has a variable incubation period of approximately 8–15 days,²⁹ and patients may present to the hospital several days after initial infection or the onset of symptoms. Thus, we are unable to determine patients' disease duration. Additionally, we separated discharged patients from those who died, but some patients may have expired after discharge. This could affect our listed case mortality rate. Our study is also confined by the inherent limitations (eg, biases) of EHR data. Although using structured EHR data allows for rapid integration of multiple data streams and real-time analysis, data present only in clinical note text, such as symptoms on presentation are missed. Additionally, symptoms present before the time of admission were not included. We chose not to perform comprehensive manual chart review to prioritise timely dissemination of our observations. Another limitation of our dataset is the large proportion of individuals that were censored.

These individuals remained in the hospital at the time of data analysis and thus had unknown outcomes. Future work will analyse these patients' hospital course in greater detail with complete outcomes data.

As the COVID-19 pandemic spreads from the current epicentre in New York City to other areas, our report provides meaningful clinical insights that may better inform care for diverse populations. Future work will aim to predict COVID-19 patient outcomes using a variety of approaches, thereby reducing healthcare system burden and permitting improved care delivery.

Author affiliations

¹The Hasso Plattner Institute for Digital Health at Mount Sinai, New York, New York, USA

²Department of Internal Medicine, Icahn School of Medicine at Mount Sinai, New York, New York, USA

³Department of Genetics and Genomic Sciences, Icahn School of Medicine at Mount Sinai, New York, New York, USA

⁴The Zena and Michael A. Wiener Cardiovascular Institute, New York, New York, USA

⁵Department of Population Health Science and Policy, Icahn School of Medicine at Mount Sinai, New York, New York, USA

⁶The Pamela Sklar Division of Psychiatric Genomics, Icahn School of Medicine at Mount Sinai, New York, New York, USA

⁷Institute for Healthcare Delivery Science, Icahn School of Medicine at Mount Sinai, New York, New York, USA

⁸Icahn Institute for Data Science and Genomic Technology, Icahn School of Medicine at Mount Sinai, New York, New York, USA

⁹Department of Pathology, Molecular and Cell-Based Medicine, Icahn School of Medicine at Mount Sinai, New York, New York, USA

¹⁰Mount Sinai Data Warehouse, Mount Sinai Health System, New York, New York, USA

¹¹Division of Infectious Diseases, Icahn School of Medicine at Mount Sinai, New York, New York, USA

¹²Icahn School of Medicine at Mount Sinai Department of Medicine, New York, New York, USA

¹³Icahn School of Medicine at Mount Sinai BioMedical Engineering and Imaging Institute, New York, New York, USA

¹⁴Department of Radiology, Icahn School of Medicine at Mount Sinai, New York, New York, USA

¹⁵Department of Cardiology, Icahn School of Medicine at Mount Sinai, New York, New York, USA

¹⁶Icahn School of Medicine at Mount Sinai Friedman Brain Institute, New York, New York, USA

¹⁷The Nash Family Department of Neuroscience, Icahn School of Medicine at Mount Sinai, New York, New York, USA

¹⁸Department of Medicine, Division of Cardiology, Zena and Michael A. Wiener Cardiovascular Institute and Marie-Josée and Henry R. Kravis Center for Cardiovascular Health, Icahn School of Medicine at Mount Sinai, New York, New York, USA

¹⁹Icahn School of Medicine at Mount Sinai Department of Psychiatry, New York, New York, USA
²⁰The Office of the Dean, Icahn School of Medicine at Mount Sinai, New York, New York, USA
²¹Icahn School of Medicine at Mount Sinai Department of Anesthesiology Perioperative and Pain Medicine, New York, New York, USA
²²Icahn School of Medicine at Mount Sinai Department of Environmental Medicine and Public Health, New York, New York, USA
²³Institute for Exposomic Research, Icahn School of Medicine at Mount Sinai, New York, New York, USA
²⁴The Charles Bronfman Institute for Personalized Medicine, Icahn School of Medicine at Mount Sinai, New York, New York, USA

Twitter Ishan Paranjpe @ParanjpeIshan, Robert M Freeman @RFreeman_RN and Benjamin S Glicksberg @BenGlicksberg

Contributors IP, AJR, JKDF, AL, MS, AV, KWJ, SS, AK, RO'H, SM, UN, SKJ, AK, PT, JJ and AF developed and performed the analysis. PG, MAL, JF, JAA, EB, CRH and BM critically appraised the manuscript and helped acquire data. IP, AL, AJR, JKDF, RM, MD, EG, DM, LMH, RF, MS, PK, VF, EPB, JN, EJJ, CC-C, DC and DLR supervised the project. IP, AL, AJR, JKDF, GNN, BSG, AWC and AJ drafted the manuscript.

Funding This work was Supported by U54 TR001433-05, National Center for Advancing Translational Sciences, National Institutes of Health.

Competing interests GNN reports grants, personal fees and non-financial support from Renalytix AI, non-financial support from Pensieve Health, personal fees from AstraZeneca, BioVie, GLG Consulting, from outside the submitted work. AL reports personal fees from Zoll, outside the submitted work. ZAF reports grants from Daiichi Sankyo, grants from Amgen, Bristol Myers Squibb and Siemens Healthineers, personal fees from Alexion, GlaxoSmithKline, Trained Therapeutix Discovery, outside the submitted work. In addition, ZAF has patents licensed to Trained Therapeutix Discovery. The other authors have nothing to disclose.

Patient consent for publication Not required.

Ethics approval The Mount Sinai Institutional Review Board approved this research under a broad regulatory protocol allowing for analysis of limited patient-level data.

Provenance and peer review Not commissioned; externally peer reviewed.

Data availability statement No data are available. Please contact authors for information on data availability.

Supplemental material This content has been supplied by the author(s). It has not been vetted by BMJ Publishing Group Limited (BMJ) and may not have been peer-reviewed. Any opinions or recommendations discussed are solely those of the author(s) and are not endorsed by BMJ. BMJ disclaims all liability and responsibility arising from any reliance placed on the content. Where the content includes any translated material, BMJ does not warrant the accuracy and reliability of the translations (including but not limited to local regulations, clinical guidelines, terminology, drug names and drug dosages), and is not responsible for any error and/or omissions arising from translation and adaptation or otherwise.

Open access This is an open access article distributed in accordance with the Creative Commons Attribution Non Commercial (CC BY-NC 4.0) license, which permits others to distribute, remix, adapt, build upon this work non-commercially, and license their derivative works on different terms, provided the original work is properly cited, appropriate credit is given, any changes made indicated, and the use is non-commercial. See: <http://creativecommons.org/licenses/by-nc/4.0/>.

ORCID iDs

Ishan Paranjpe <http://orcid.org/0000-0001-5144-0370>
 Suraj K Jaladanki <http://orcid.org/0000-0003-0406-2973>

REFERENCES

- 1 Coronavirus resource center. COVID-19 Map, 2020. Available: <https://coronavirus.jhu.edu/map.html>
- 2 Guan W-J, Ni Z-Y, Hu Y, et al. Clinical characteristics of coronavirus disease 2019 in China. *N Engl J Med* 2020;382:1708–20.
- 3 Gupta A, Madhavan MV, Sehgal K, et al. Extrapulmonary manifestations of COVID-19. *Nat Med* 2020;26:1017–32.
- 4 Fisher M, Neugarten J, Bellin E, et al. Aki in hospitalized patients with and without COVID-19: a comparison study. *J Am Soc Nephrol* 2020;31:2145–57.
- 5 Chan L, Chaudhary K, Saha A, et al. Aki in hospitalized patients with COVID-19. *J Am Soc Nephrol* 2020;ASN.2020050615.
- 6 Lala A, Johnson KW, Januzzi JL, et al. Prevalence and impact of myocardial injury in patients hospitalized with COVID-19 infection. *J Am Coll Cardiol* 2020;76:533–46.
- 7 Paranjpe I, Fuster V, Lala A, et al. Association of treatment dose anticoagulation with in-hospital survival among hospitalized patients with COVID-19. *J Am Coll Cardiol* 2020;76:122–4.
- 8 Menter T, Haslbauer JD, Nienhold R, et al. Postmortem examination of COVID-19 patients reveals diffuse alveolar damage with severe capillary congestion and variegated findings in lungs and other organs suggesting vascular dysfunction. *Histopathology* 2020;77:198–209.
- 9 Zhang Y, Xiao M, Zhang S, et al. Coagulopathy and antiphospholipid antibodies in patients with Covid-19. *N Engl J Med* 2020;382:e38.
- 10 Yin S, Huang M, Li D, et al. Difference of coagulation features between severe pneumonia induced by SARS-CoV2 and non-SARS-CoV2. *J Thromb Thrombolysis* 2020;395:1–4.
- 11 Bilaloglu S, Aphinyanaphongs Y, Jones S, et al. Thrombosis in hospitalized patients with COVID-19 in a new York City health system. *JAMA* 2020;324:799–801.
- 12 Grasselli G, Zangrillo A, Zanella A, et al. Baseline characteristics and outcomes of 1591 patients infected with SARS-CoV-2 admitted to ICUs of the Lombardy region, Italy. *JAMA* 2020;323:1574–81.
- 13 Yang X, Yu Y, Xu J, et al. Clinical course and outcomes of critically ill patients with SARS-CoV-2 pneumonia in Wuhan, China: a single-centered, retrospective, observational study. *Lancet Respir Med* 2020;8:475–81.
- 14 Vena A, Giacobbe DR, Di Biagio A, et al. Clinical characteristics, management and in-hospital mortality of patients with coronavirus disease 2019 in Genoa, Italy. *Clin Microbiol Infect* 2020. doi:10.1016/j.cmi.2020.07.049. [Epub ahead of print: 15 Aug 2020].
- 15 Center for Disease Control and Prevention. States reporting cases of COVID-19 to CDC, 2020. Available: <https://www.cdc.gov/coronavirus/2019-ncov/cases-updates/cases-in-us.html>
- 16 Lipsitch M, Swerdlow DL, Finelli L. Defining the Epidemiology of Covid-19 - Studies Needed. *N Engl J Med* 2020;382:1194–6.
- 17 R Core Team. R: a language and environment for statistical computing. R found STAT comput Vienna, Austria; R foundation for statistical computing, 2017. Available: <https://www.r-project.org/about.html>
- 18 McMichael TM, Currie DW, Clark S, et al. Epidemiology of Covid-19 in a long-term care facility in King County, Washington. *N Engl J Med* 2020;382:2005–11.
- 19 Ng O-T, Marimuthu K, Chia P-Y, et al. SARS-CoV-2 infection among travelers returning from Wuhan, China. *N Engl J Med* 2020;382:1476–8.
- 20 Holshue ML, DeBolt C, Lindquist S, et al. First case of 2019 novel coronavirus in the United States. *N Engl J Med* 2020;382:929–36.
- 21 Verity R, Okell LC, Dorigatti I, et al. Estimates of the severity of coronavirus disease 2019: a model-based analysis. *Lancet Infect Dis* 2020;20:669–77.
- 22 Zhou F, Yu T, Du R, et al. Clinical course and risk factors for mortality of adult inpatients with COVID-19 in Wuhan, China: a retrospective cohort study. *Lancet* 2020;395:1054–62.
- 23 Bhatraju PK, Ghassemieh BJ, Nichols M, et al. Covid-19 in critically ill patients in the seattle region - case series. *N Engl J Med* 2020;382:2012–22.
- 24 CDC C. Epidemiology Working Group for NCIP Epidemic Response, Chinese Center for Disease Control and Prevention. [The epidemiological characteristics of an outbreak of 2019 novel coronavirus diseases (COVID-19) in China]. *China CDC Weekly* 2020.
- 25 Arentz M, Yim E, Klaff L, et al. Characteristics and outcomes of 21 critically ill patients with COVID-19 in Washington state. *JAMA* 2020;323:1612.
- 26 Han Y, Zhang H, Mu S. Lactate dehydrogenase, a risk factor of severe COVID-19 patients. *medRxiv*.
- 27 Lippi G, Plebani M. Procalcitonin in patients with severe coronavirus disease 2019 (COVID-19): a meta-analysis. *Clin Chim Acta* 2020;505:190–1.
- 28 Goyal P, Choi JJ, Pinheiro LC, et al. Clinical characteristics of Covid-19 in New York City. *N Engl J Med* 2020;382:2372–4.
- 29 Lauer SA, Grantz KH, Bi Q, et al. The incubation period of coronavirus disease 2019 (COVID-19) from publicly reported confirmed cases: estimation and application. *Ann Intern Med* 2020;172:577–82.

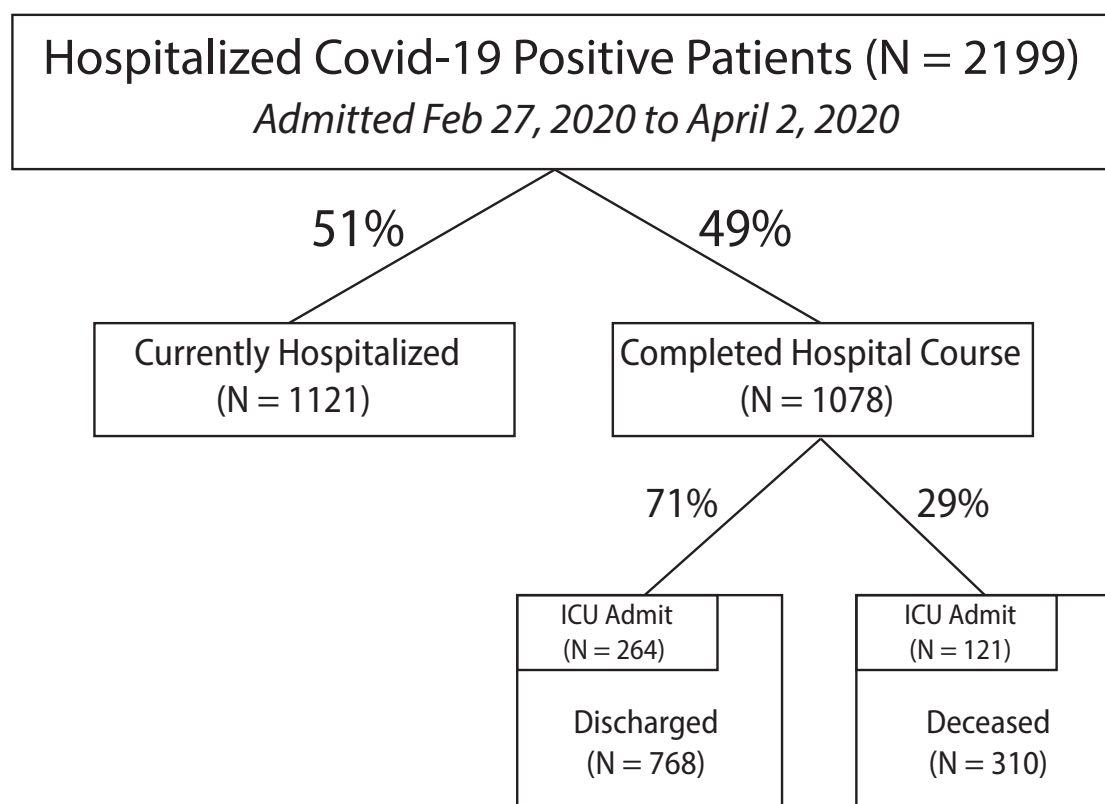
Supplementary Material

Supplementary Methods

Mount Sinai Covid Informatics Center (MSCIC) Data Platform

This dataset of clinical data is the first part of a larger effort that aims to create an heterogeneous collection of COVID-19 patient data. This effort brings together different stakeholders from MSHS, including research faculty, data scientists, clinicians, and hospital administrators, among others. The resulting dataset includes or will include longitudinal electronic health record (EHR) patient clinical data, multi-omics, such as genomics, imaging, such as chest CT scans, among others. The data, which are updated on a daily basis, is made available within a secure computational framework based on internal Microsoft Azure Cloud to researchers and analysts within the MSHS and the Icahn School of Medicine at Mount Sinai. This dataset is intended to foster research projects to improve the knowledge of this disease and augment clinical operations with machine intelligence.

Supplementary Figures



DIAGNOSIS	CODE	TYPE	DESCRIPTION
Atrial fibrillation	427.3	ICD9	Atrial fibrillation and flutter
Atrial fibrillation	427.31	ICD9	Atrial fibrillation
Atrial fibrillation	427.32	ICD9	Atrial flutter
Atrial fibrillation	I48	ICD10	Atrial fibrillation and flutter
Atrial fibrillation	I48.0	ICD10	Paroxysmal atrial fibrillation
Atrial fibrillation	I48.1	ICD10	Persistent atrial fibrillation
Atrial fibrillation	I48.2	ICD10	Chronic atrial fibrillation
Atrial fibrillation	I48.3	ICD10	Typical atrial flutter
Atrial fibrillation	I48.4	ICD10	Atypical atrial flutter
Atrial fibrillation	I48.91	ICD10	Unspecified atrial fibrillation
Atrial fibrillation	I48.92	ICD10	Unspecified atrial flutter
Asthma	493	ICD9	Asthma
Asthma	493	ICD9	Extrinsic asthma
Asthma	493	ICD9	Extrinsic asthma without mention of status asthmaticus
Asthma	493.01	ICD9	Extrinsic asthma with status asthmaticus
Asthma	493.02	ICD9	Extrinsic asthma with acute exacerbation
Asthma	493.1	ICD9	Intrinsic asthma
Asthma	493.1	ICD9	Intrinsic asthma without mention of status asthmaticus
Asthma	493.11	ICD9	Intrinsic asthma with status asthmaticus
Asthma	493.12	ICD9	Intrinsic asthma with acute exacerbation
Asthma	493.2	ICD9	Chronic obstructive asthma
Asthma	493.2	ICD9	Chronic obstructive asthma
Asthma	493.21	ICD9	Chronic obstructive asthma
Asthma	493.22	ICD9	Chronic obstructive asthma
Asthma	493.8	ICD9	Other forms of asthma
Asthma	493.81	ICD9	Exercise induced bronchospasm
Asthma	493.82	ICD9	Cough variant asthma
Asthma	493.9	ICD9	Asthma
Asthma	493.9	ICD9	Asthma
Asthma	493.91	ICD9	Asthma
Asthma	493.92	ICD9	Asthma
Asthma	J45.0	ICD10	Asthma
Asthma	J45.20	ICD10	Mild intermittent asthma
Asthma	J45.21	ICD10	Mild intermittent asthma with (acute) exacerbation
Asthma	J45.22	ICD10	Mild intermittent asthma with status asthmaticus

Asthma	J45.30	ICD10	Mild persistent asthma
Asthma	J45.31	ICD10	Mild persistent asthma with (acute) exacerbation
Asthma	J45.32	ICD10	Mild persistent asthma with status asthmaticus
Asthma	J45.40	ICD10	Moderate persistent asthma
Asthma	J45.41	ICD10	Moderate persistent asthma with (acute) exacerbation
Asthma	J45.42	ICD10	Moderate persistent asthma with status asthmaticus
Asthma	J45.50	ICD10	Severe persistent asthma
Asthma	J45.51	ICD10	Severe persistent asthma with (acute) exacerbation
Asthma	J45.52	ICD10	Severe persistent asthma with status asthmaticus
Asthma	J45.90	ICD10	Unspecified asthma
Asthma	J45.901	ICD10	Unspecified asthma with (acute) exacerbation
Asthma	J45.902	ICD10	Unspecified asthma with status asthmaticus
Asthma	J45.909	ICD10	Unspecified asthma
Asthma	J45.990	ICD10	Exercise induced bronchospasm
Asthma	J45.991	ICD10	Cough variant asthma
Asthma	J45.998	ICD10	Other asthma
Coronary artery disease	411.81	ICD9	Acute coronary occlusion without myocardial infarction
Coronary artery disease	414	ICD9	Coronary atherosclerosis
Coronary artery disease	414	ICD9	Coronary atherosclerosis of unspecified type of vessel
Coronary artery disease	414.01	ICD9	Coronary atherosclerosis of native coronary artery
Coronary artery disease	414.02	ICD9	Coronary atherosclerosis of autologous biological bypass graft
Coronary artery disease	414.03	ICD9	Coronary atherosclerosis of nonautologous biological bypass graft
Coronary artery disease	414.04	ICD9	Coronary atherosclerosis of artery bypass graft
Coronary artery disease	414.05	ICD9	Coronary atherosclerosis of unspecified type of bypass graft

Coronary artery disease	414.2	ICD9	Chronic total occlusion of coronary artery
Coronary artery disease	414.3	ICD9	Coronary atherosclerosis due to lipid rich plaque
Coronary artery disease	414.4	ICD9	Coronary atherosclerosis due to calcified coronary lesion
Coronary artery disease	410	ICD9	Acute myocardial infarction
Coronary artery disease	410	ICD9	Acute myocardial infarction
Coronary artery disease	410	ICD9	Acute myocardial infarction
Coronary artery disease	410.01	ICD9	Acute myocardial infarction
Coronary artery disease	410.02	ICD9	Acute myocardial infarction
Coronary artery disease	410.1	ICD9	Acute myocardial infarction
Coronary artery disease	410.1	ICD9	Acute myocardial infarction
Coronary artery disease	410.11	ICD9	Acute myocardial infarction
Coronary artery disease	410.12	ICD9	Acute myocardial infarction
Coronary artery disease	410.2	ICD9	Acute myocardial infarction
Coronary artery disease	410.2	ICD9	Acute myocardial infarction
Coronary artery disease	410.21	ICD9	Acute myocardial infarction
Coronary artery disease	410.22	ICD9	Acute myocardial infarction
Coronary artery disease	410.3	ICD9	Acute myocardial infarction
Coronary artery disease	410.3	ICD9	Acute myocardial infarction
Coronary artery disease	410.31	ICD9	Acute myocardial infarction
Coronary artery disease	410.32	ICD9	Acute myocardial infarction

Coronary artery disease	410.4	ICD9	Acute myocardial infarction
Coronary artery disease	410.4	ICD9	Acute myocardial infarction
Coronary artery disease	410.41	ICD9	Acute myocardial infarction
Coronary artery disease	410.42	ICD9	Acute myocardial infarction
Coronary artery disease	410.5	ICD9	Acute myocardial infarction
Coronary artery disease	410.5	ICD9	Acute myocardial infarction
Coronary artery disease	410.51	ICD9	Acute myocardial infarction
Coronary artery disease	410.52	ICD9	Acute myocardial infarction
Coronary artery disease	410.6	ICD9	Acute myocardial infarction
Coronary artery disease	410.6	ICD9	Acute myocardial infarction
Coronary artery disease	410.61	ICD9	Acute myocardial infarction
Coronary artery disease	410.62	ICD9	Acute myocardial infarction
Coronary artery disease	410.7	ICD9	Acute myocardial infarction
Coronary artery disease	410.7	ICD9	Acute myocardial infarction
Coronary artery disease	410.71	ICD9	Acute myocardial infarction
Coronary artery disease	410.72	ICD9	Acute myocardial infarction
Coronary artery disease	410.8	ICD9	Acute myocardial infarction
Coronary artery disease	410.8	ICD9	Acute myocardial infarction
Coronary artery disease	410.81	ICD9	Acute myocardial infarction
Coronary artery disease	410.82	ICD9	Acute myocardial infarction

Coronary artery disease	410.9	ICD9	Acute myocardial infarction
Coronary artery disease	410.9	ICD9	Acute myocardial infarction
Coronary artery disease	410.91	ICD9	Acute myocardial infarction
Coronary artery disease	410.92	ICD9	Acute myocardial infarction
Coronary artery disease	411	ICD9	Postmyocardial infarction syndrome
Coronary artery disease	412	ICD9	Old myocardial infarction
Coronary artery disease	429.7	ICD9	Certain sequelae of myocardial infarction
Coronary artery disease	429.71	ICD9	Cardiac septal defect
Coronary artery disease	429.79	ICD9	Other sequelae of myocardial infarction
Coronary artery disease	I24.0	ICD10	Acute coronary thrombosis not resulting in myocardial infarction
Coronary artery disease	I25.1	ICD10	Atherosclerotic heart disease of native coronary artery
Coronary artery disease	I25.10	ICD10	Atherosclerotic heart disease of native coronary artery without angina pectoris
Coronary artery disease	I25.110	ICD10	Atherosclerotic heart disease of native coronary artery with unstable angina pectoris
Coronary artery disease	I25.111	ICD10	Atherosclerotic heart disease of native coronary artery with angina pectoris with documented spasm
Coronary artery disease	I25.118	ICD10	Atherosclerotic heart disease of native coronary artery with other forms of angina pectoris
Coronary artery disease	I25.119	ICD10	Atherosclerotic heart disease of native coronary artery with unspecified angina pectoris
Coronary artery disease	I25.700	ICD10	Atherosclerosis of coronary artery bypass graft(s)
Coronary artery disease	I25.701	ICD10	Atherosclerosis of coronary artery bypass graft(s)

Coronary artery disease	I25.708	ICD10	Atherosclerosis of coronary artery bypass graft(s)
Coronary artery disease	I25.709	ICD10	Atherosclerosis of coronary artery bypass graft(s)
Coronary artery disease	I25.710	ICD10	Atherosclerosis of autologous vein coronary artery bypass graft(s) with unstable angina pectoris
Coronary artery disease	I25.711	ICD10	Atherosclerosis of autologous vein coronary artery bypass graft(s) with angina pectoris with documented spasm
Coronary artery disease	I25.718	ICD10	Atherosclerosis of autologous vein coronary artery bypass graft(s) with other forms of angina pectoris
Coronary artery disease	I25.719	ICD10	Atherosclerosis of autologous vein coronary artery bypass graft(s) with unspecified angina pectoris
Coronary artery disease	I25.720	ICD10	Atherosclerosis of autologous artery coronary artery bypass graft(s) with unstable angina pectoris
Coronary artery disease	I25.721	ICD10	Atherosclerosis of autologous artery CABG w ang pctrs w documented spasm
Coronary artery disease	I25.728	ICD10	Atherosclerosis of autologous artery coronary artery bypass graft(s) with other forms of angina pectoris
Coronary artery disease	I25.729	ICD10	Atherosclerosis of autologous artery coronary artery bypass graft(s) with unspecified angina pectoris
Coronary artery disease	I25.730	ICD10	Atherosclerosis of nonautologous biological coronary artery bypass graft(s) with unstable angina pectoris
Coronary artery disease	I25.731	ICD10	Atherosclerosis of nonautologous biological CABG w ang pctrs w documented spasm
Coronary artery disease	I25.738	ICD10	Atherosclerosis of nonautologous biological coronary artery bypass graft(s) with other forms of angina pectoris
Coronary artery disease	I25.739	ICD10	Atherosclerosis of nonautologous biological coronary artery bypass graft(s) with unspecified angina pectoris
Coronary artery disease	I25.790	ICD10	Atherosclerosis of other coronary artery bypass graft(s) with unstable angina pectoris

Coronary artery disease	I25.791	ICD10	Atherosclerosis of other coronary artery bypass graft(s) with angina pectoris with documented spasm
Coronary artery disease	I25.798	ICD10	Atherosclerosis of other coronary artery bypass graft(s) with other forms of angina pectoris
Coronary artery disease	I25.799	ICD10	Atherosclerosis of other coronary artery bypass graft(s) with unspecified angina pectoris
Coronary artery disease	I25.810	ICD10	Atherosclerosis of coronary artery bypass graft(s) without angina pectoris
Coronary artery disease	I25.82	ICD10	Chronic total occlusion of coronary artery
Coronary artery disease	I25.83	ICD10	Coronary atherosclerosis due to lipid rich plaque
Coronary artery disease	I25.84	ICD10	Coronary atherosclerosis due to calcified coronary lesion
Coronary artery disease	I21	ICD10	Acute myocardial infarction
Coronary artery disease	I23.1	ICD10	Atrial septal defect as current complication following acute myocardial infarction
Coronary artery disease	I51.0	ICD10	Cardiac septal defect
Coronary artery disease	I24.1	ICD10	Dressler's syndrome
Coronary artery disease	I23.0	ICD10	Hemopericardium as current complication following acute myocardial infarction
Coronary artery disease	I51.3	ICD10	Intracardiac thrombosis
Coronary artery disease	I21.9	ICD10	Myocardial infarction (acute) NOS
Coronary artery disease	I21.A1	ICD10	Myocardial infarction type 2
Coronary artery disease	I21.4	ICD10	Non-ST elevation (NSTEMI) myocardial infarction
Coronary artery disease	I25.2	ICD10	Old myocardial infarction

Coronary artery disease	I23.8	ICD10	Other current complications following acute myocardial infarction
Coronary artery disease	I21.A9	ICD10	Other myocardial infarction type
Coronary artery disease	I21.A	ICD10	Other type of myocardial infarction
Coronary artery disease	I23.7	ICD10	Postinfarction angina
Coronary artery disease	I23.3	ICD10	Rupture of cardiac wall without hemopericardium as current complication following acute myocardial infarction
Coronary artery disease	I21.02	ICD10	ST elevation (STEMI) myocardial infarction involving left anterior descending coronary artery
Coronary artery disease	I21.21	ICD10	ST elevation (STEMI) myocardial infarction involving left circumflex coronary artery
Coronary artery disease	I21.01	ICD10	ST elevation (STEMI) myocardial infarction involving left main coronary artery
Coronary artery disease	I21.09	ICD10	ST elevation (STEMI) myocardial infarction involving other coronary artery of anterior wall
Coronary artery disease	I21.19	ICD10	ST elevation (STEMI) myocardial infarction involving other coronary artery of inferior wall
Coronary artery disease	I21.29	ICD10	ST elevation (STEMI) myocardial infarction involving other sites
Coronary artery disease	I21.11	ICD10	ST elevation (STEMI) myocardial infarction involving right coronary artery
Coronary artery disease	I21.0	ICD10	ST elevation (STEMI) myocardial infarction of anterior wall
Coronary artery disease	I21.1	ICD10	ST elevation (STEMI) myocardial infarction of inferior wall
Coronary artery disease	I21.2	ICD10	ST elevation (STEMI) myocardial infarction of other sites
Coronary artery disease	I21.3	ICD10	ST elevation (STEMI) myocardial infarction of unspecified site

Coronary artery disease	I22.2	ICD10	Subsequent non-ST elevation (NSTEMI) myocardial infarction
Coronary artery disease	I22	ICD10	Subsequent ST elevation (STEMI) and non-ST elevation (NSTEMI) myocardial infarction
Coronary artery disease	I22.0	ICD10	Subsequent ST elevation (STEMI) myocardial infarction of anterior wall
Coronary artery disease	I22.1	ICD10	Subsequent ST elevation (STEMI) myocardial infarction of inferior wall
Coronary artery disease	I22.8	ICD10	Subsequent ST elevation (STEMI) myocardial infarction of other sites
Coronary artery disease	I22.9	ICD10	Subsequent ST elevation (STEMI) myocardial infarction of unspecified site
Coronary artery disease	I23.6	ICD10	Thrombosis of atrium
Coronary artery disease	I23.2	ICD10	Ventricular septal defect as current complication following acute myocardial infarction
Cancer	140	ICD9	Malignant neoplasm of lip
Cancer	140	ICD9	Malignant neoplasm of upper lip
Cancer	140.1	ICD9	Malignant neoplasm of lower lip
Cancer	140.3	ICD9	Malignant neoplasm of upper lip
Cancer	140.4	ICD9	Malignant neoplasm of lower lip
Cancer	140.5	ICD9	Malignant neoplasm of lip
Cancer	140.6	ICD9	Malignant neoplasm of commissure of lip
Cancer	140.8	ICD9	Malignant neoplasm of other sites of lip
Cancer	140.9	ICD9	Malignant neoplasm of lip
Cancer	141	ICD9	Malignant neoplasm of tongue
Cancer	141	ICD9	Malignant neoplasm of base of tongue
Cancer	141.1	ICD9	Malignant neoplasm of dorsal surface of tongue
Cancer	141.2	ICD9	Malignant neoplasm of tip and lateral border of tongue
Cancer	141.3	ICD9	Malignant neoplasm of ventral surface of tongue
Cancer	141.4	ICD9	Malignant neoplasm of anterior two-thirds of tongue
Cancer	141.5	ICD9	Malignant neoplasm of junctional zone of tongue

Cancer	141.6	ICD9	Malignant neoplasm of lingual tonsil
Cancer	141.8	ICD9	Malignant neoplasm of other sites of tongue
Cancer	141.9	ICD9	Malignant neoplasm of tongue
Cancer	142	ICD9	Malignant neoplasm of major salivary glands
Cancer	142	ICD9	Malignant neoplasm of parotid gland
Cancer	142.1	ICD9	Malignant neoplasm of submandibular gland
Cancer	142.2	ICD9	Malignant neoplasm of sublingual gland
Cancer	142.8	ICD9	Malignant neoplasm of other major salivary glands
Cancer	142.9	ICD9	Malignant neoplasm of salivary gland
Cancer	143	ICD9	Malignant neoplasm of gum
Cancer	143	ICD9	Malignant neoplasm of upper gum
Cancer	143.1	ICD9	Malignant neoplasm of lower gum
Cancer	143.8	ICD9	Malignant neoplasm of other sites of gum
Cancer	143.9	ICD9	Malignant neoplasm of gum
Cancer	144	ICD9	Malignant neoplasm of floor of mouth
Cancer	144	ICD9	Malignant neoplasm of anterior portion of floor of mouth
Cancer	144.1	ICD9	Malignant neoplasm of lateral portion of floor of mouth
Cancer	144.8	ICD9	Malignant neoplasm of other sites of floor of mouth
Cancer	144.9	ICD9	Malignant neoplasm of floor of mouth
Cancer	145	ICD9	Malignant neoplasm of other and unspecified parts of mouth
Cancer	145	ICD9	Malignant neoplasm of cheek mucosa
Cancer	145.1	ICD9	Malignant neoplasm of vestibule of mouth
Cancer	145.2	ICD9	Malignant neoplasm of hard palate
Cancer	145.3	ICD9	Malignant neoplasm of soft palate
Cancer	145.4	ICD9	Malignant neoplasm of uvula
Cancer	145.5	ICD9	Malignant neoplasm of palate
Cancer	145.6	ICD9	Malignant neoplasm of retromolar area
Cancer	145.8	ICD9	Malignant neoplasm of other specified parts of mouth
Cancer	145.9	ICD9	Malignant neoplasm of mouth

Cancer	146	ICD9	Malignant neoplasm of oropharynx
Cancer	146	ICD9	Malignant neoplasm of tonsil
Cancer	146.1	ICD9	Malignant neoplasm of tonsillar fossa
Cancer	146.2	ICD9	Malignant neoplasm of tonsillar pillars (anterior) (posterior)
Cancer	146.3	ICD9	Malignant neoplasm of vallecula
Cancer	146.4	ICD9	Malignant neoplasm of anterior aspect of epiglottis
Cancer	146.5	ICD9	Malignant neoplasm of junctional region of oropharynx
Cancer	146.6	ICD9	Malignant neoplasm of lateral wall of oropharynx
Cancer	146.7	ICD9	Malignant neoplasm of posterior wall of oropharynx
Cancer	146.8	ICD9	Malignant neoplasm of other specified sites of oropharynx
Cancer	146.9	ICD9	Malignant neoplasm of oropharynx
Cancer	147	ICD9	Malignant neoplasm of nasopharynx
Cancer	147	ICD9	Malignant neoplasm of superior wall of nasopharynx
Cancer	147.1	ICD9	Malignant neoplasm of posterior wall of nasopharynx
Cancer	147.2	ICD9	Malignant neoplasm of lateral wall of nasopharynx
Cancer	147.3	ICD9	Malignant neoplasm of anterior wall of nasopharynx
Cancer	147.8	ICD9	Malignant neoplasm of other specified sites of nasopharynx
Cancer	147.9	ICD9	Malignant neoplasm of nasopharynx
Cancer	148	ICD9	Malignant neoplasm of hypopharynx
Cancer	148	ICD9	Malignant neoplasm of postcricoid region of hypopharynx
Cancer	148.1	ICD9	Malignant neoplasm of pyriform sinus
Cancer	148.2	ICD9	Malignant neoplasm of aryepiglottic fold
Cancer	148.3	ICD9	Malignant neoplasm of posterior hypopharyngeal wall
Cancer	148.8	ICD9	Malignant neoplasm of other specified sites of hypopharynx
Cancer	148.9	ICD9	Malignant neoplasm of hypopharynx

Cancer	149	ICD9	Malignant neoplasm of other and ill-defined sites within the lip
Cancer	149	ICD9	Malignant neoplasm of pharynx
Cancer	149.1	ICD9	Malignant neoplasm of waldeyer's ring
Cancer	149.8	ICD9	Malignant neoplasm of other sites within the lip and oral cavity
Cancer	149.9	ICD9	Malignant neoplasm of ill-defined sites within the lip and oral cavity
Cancer	150	ICD9	Malignant neoplasm of esophagus
Cancer	150	ICD9	Malignant neoplasm of cervical esophagus
Cancer	150.1	ICD9	Malignant neoplasm of thoracic esophagus
Cancer	150.2	ICD9	Malignant neoplasm of abdominal esophagus
Cancer	150.3	ICD9	Malignant neoplasm of upper third of esophagus
Cancer	150.4	ICD9	Malignant neoplasm of middle third of esophagus
Cancer	150.5	ICD9	Malignant neoplasm of lower third of esophagus
Cancer	150.8	ICD9	Malignant neoplasm of other specified part of esophagus
Cancer	150.9	ICD9	Malignant neoplasm of esophagus
Cancer	151	ICD9	Malignant neoplasm of stomach
Cancer	151	ICD9	Malignant neoplasm of cardia
Cancer	151.1	ICD9	Malignant neoplasm of pylorus
Cancer	151.2	ICD9	Malignant neoplasm of pyloric antrum
Cancer	151.3	ICD9	Malignant neoplasm of fundus of stomach
Cancer	151.4	ICD9	Malignant neoplasm of body of stomach
Cancer	151.5	ICD9	Malignant neoplasm of lesser curvature of stomach
Cancer	151.6	ICD9	Malignant neoplasm of greater curvature of stomach
Cancer	151.8	ICD9	Malignant neoplasm of other specified sites of stomach
Cancer	151.9	ICD9	Malignant neoplasm of stomach
Cancer	153	ICD9	Malignant neoplasm of colon
Cancer	153	ICD9	Malignant neoplasm of hepatic flexure

Cancer	153.1	ICD9	Malignant neoplasm of transverse colon
Cancer	153.2	ICD9	Malignant neoplasm of descending colon
Cancer	153.3	ICD9	Malignant neoplasm of sigmoid colon
Cancer	153.4	ICD9	Malignant neoplasm of cecum
Cancer	153.5	ICD9	Malignant neoplasm of appendix vermiformis
Cancer	153.6	ICD9	Malignant neoplasm of ascending colon
Cancer	153.7	ICD9	Malignant neoplasm of splenic flexure
Cancer	153.8	ICD9	Malignant neoplasm of other specified sites of large intestine
Cancer	153.9	ICD9	Malignant neoplasm of colon
Cancer	154.8	ICD9	Malignant neoplasm of other sites of rectum
Cancer	155	ICD9	Malignant neoplasm of liver and intrahepatic bile ducts
Cancer	155.1	ICD9	Malignant neoplasm of intrahepatic bile ducts
Cancer	155.2	ICD9	Malignant neoplasm of liver
Cancer	157	ICD9	Malignant neoplasm of pancreas
Cancer	157	ICD9	Malignant neoplasm of head of pancreas
Cancer	157.1	ICD9	Malignant neoplasm of body of pancreas
Cancer	157.2	ICD9	Malignant neoplasm of tail of pancreas
Cancer	157.3	ICD9	Malignant neoplasm of pancreatic duct
Cancer	157.4	ICD9	Malignant neoplasm of islets of Langerhans
Cancer	157.8	ICD9	Malignant neoplasm of other specified sites of pancreas
Cancer	157.9	ICD9	Malignant neoplasm of pancreas
Cancer	159	ICD9	Malignant neoplasm of intestinal tract
Cancer	160	ICD9	Malignant neoplasm of nasal cavities
Cancer	160	ICD9	Malignant neoplasm of nasal cavities
Cancer	160.1	ICD9	Malignant neoplasm of auditory tube
Cancer	160.2	ICD9	Malignant neoplasm of maxillary sinus
Cancer	160.3	ICD9	Malignant neoplasm of ethmoidal sinus
Cancer	160.4	ICD9	Malignant neoplasm of frontal sinus
Cancer	160.5	ICD9	Malignant neoplasm of sphenoidal sinus
Cancer	160.8	ICD9	Malignant neoplasm of other accessory sinuses
Cancer	160.9	ICD9	Malignant neoplasm of accessory sinus
Cancer	161	ICD9	Malignant neoplasm of larynx

Cancer	161	ICD9	Malignant neoplasm of glottis
Cancer	161.1	ICD9	Malignant neoplasm of supraglottis
Cancer	161.2	ICD9	Malignant neoplasm of subglottis
Cancer	161.3	ICD9	Malignant neoplasm of laryngeal cartilages
Cancer	161.8	ICD9	Malignant neoplasm of other specified sites of larynx
Cancer	161.9	ICD9	Malignant neoplasm of larynx
Cancer	162	ICD9	Malignant neoplasm of trachea
Cancer	162	ICD9	Malignant neoplasm of trachea
Cancer	162.2	ICD9	Malignant neoplasm of main bronchus
Cancer	162.3	ICD9	Malignant neoplasm of upper lobe
Cancer	162.4	ICD9	Malignant neoplasm of middle lobe
Cancer	162.5	ICD9	Malignant neoplasm of lower lobe
Cancer	162.8	ICD9	Malignant neoplasm of other parts of bronchus or lung
Cancer	162.9	ICD9	Malignant neoplasm of bronchus and lung
Cancer	163	ICD9	Malignant neoplasm of pleura
Cancer	163	ICD9	Malignant neoplasm of parietal pleura
Cancer	163.1	ICD9	Malignant neoplasm of visceral pleura
Cancer	163.8	ICD9	Malignant neoplasm of other specified sites of pleura
Cancer	163.9	ICD9	Malignant neoplasm of pleura
Cancer	164	ICD9	Malignant neoplasm of thymus
Cancer	164	ICD9	Malignant neoplasm of thymus
Cancer	164.1	ICD9	Malignant neoplasm of heart
Cancer	164.2	ICD9	Malignant neoplasm of anterior mediastinum
Cancer	164.3	ICD9	Malignant neoplasm of posterior mediastinum
Cancer	164.8	ICD9	Malignant neoplasm of other parts of mediastinum
Cancer	164.9	ICD9	Malignant neoplasm of mediastinum
Cancer	165	ICD9	Malignant neoplasm of other and ill-defined sites within the respiratory system and intrathoracic organs
Cancer	165	ICD9	Malignant neoplasm of upper respiratory tract

Cancer	165.8	ICD9	Malignant neoplasm of other sites within the respiratory system and intrathoracic organs
Cancer	165.9	ICD9	Malignant neoplasm of ill-defined sites within the respiratory system
Cancer	170	ICD9	Malignant neoplasm of bone and articular cartilage
Cancer	170	ICD9	Malignant neoplasm of bones of skull and face
Cancer	170.1	ICD9	Malignant neoplasm of mandible
Cancer	170.2	ICD9	Malignant neoplasm of vertebral column
Cancer	170.3	ICD9	Malignant neoplasm of ribs
Cancer	170.4	ICD9	Malignant neoplasm of scapula and long bones of upper limb
Cancer	170.5	ICD9	Malignant neoplasm of short bones of upper limb
Cancer	170.6	ICD9	Malignant neoplasm of pelvic bones
Cancer	170.7	ICD9	Malignant neoplasm of long bones of lower limb
Cancer	170.8	ICD9	Malignant neoplasm of short bones of lower limb
Cancer	170.9	ICD9	Malignant neoplasm of bone and articular cartilage
Cancer	171	ICD9	Malignant neoplasm of connective and other soft tissue
Cancer	171	ICD9	Malignant neoplasm of connective and other soft tissue of head
Cancer	171.2	ICD9	Malignant neoplasm of connective and other soft tissue of upper limb
Cancer	171.3	ICD9	Malignant neoplasm of connective and other soft tissue of lower limb
Cancer	171.4	ICD9	Malignant neoplasm of connective and other soft tissue of thorax
Cancer	171.5	ICD9	Malignant neoplasm of connective and other soft tissue of abdomen
Cancer	171.6	ICD9	Malignant neoplasm of connective and other soft tissue of pelvis
Cancer	171.7	ICD9	Malignant neoplasm of connective and other soft tissue of trunk

Cancer	171.8	ICD9	Malignant neoplasm of other specified sites of connective and other soft tissue
Cancer	171.9	ICD9	Malignant neoplasm of connective and other soft tissue
Cancer	173	ICD9	Other malignant neoplasm of skin
Cancer	173	ICD9	Other malignant neoplasm of skin of lip
Cancer	173	ICD9	Unspecified malignant neoplasm of skin of lip
Cancer	173.09	ICD9	Other specified malignant neoplasm of skin of lip
Cancer	173.1	ICD9	Other malignant neoplasm of skin of eyelid
Cancer	173.1	ICD9	Unspecified malignant neoplasm of eyelid
Cancer	173.19	ICD9	Other specified malignant neoplasm of eyelid
Cancer	173.2	ICD9	Other malignant neoplasm of skin of ear and external auditory canal
Cancer	173.2	ICD9	Unspecified malignant neoplasm of skin of ear and external auditory canal
Cancer	173.29	ICD9	Other specified malignant neoplasm of skin of ear and external auditory canal
Cancer	173.3	ICD9	Other malignant neoplasm of skin of other and unspecified parts of face
Cancer	173.3	ICD9	Unspecified malignant neoplasm of skin of other and unspecified parts of face
Cancer	173.39	ICD9	Other specified malignant neoplasm of skin of other and unspecified parts of face
Cancer	173.4	ICD9	Other malignant neoplasm of scalp and skin of neck
Cancer	173.4	ICD9	Unspecified malignant neoplasm of scalp and skin of neck
Cancer	173.49	ICD9	Other specified malignant neoplasm of scalp and skin of neck
Cancer	173.5	ICD9	Other malignant neoplasm of skin of trunk
Cancer	173.5	ICD9	Unspecified malignant neoplasm of skin of trunk

Cancer	173.59	ICD9	Other specified malignant neoplasm of skin of trunk
Cancer	173.6	ICD9	Other malignant neoplasm of skin of upper limb
Cancer	173.6	ICD9	Unspecified malignant neoplasm of skin of upper limb
Cancer	173.69	ICD9	Other specified malignant neoplasm of skin of upper limb
Cancer	173.7	ICD9	Other malignant neoplasm of skin of lower limb
Cancer	173.7	ICD9	Unspecified malignant neoplasm of skin of lower limb
Cancer	173.79	ICD9	Other specified malignant neoplasm of skin of lower limb
Cancer	173.8	ICD9	Other malignant neoplasm of other specified sites of skin
Cancer	173.8	ICD9	Unspecified malignant neoplasm of other specified sites of skin
Cancer	173.89	ICD9	Other specified malignant neoplasm of other specified sites of skin
Cancer	173.9	ICD9	Other malignant neoplasm of skin
Cancer	173.9	ICD9	Unspecified malignant neoplasm of skin
Cancer	173.99	ICD9	Other specified malignant neoplasm of skin
Cancer	175	ICD9	Malignant neoplasm of male breast
Cancer	175	ICD9	Malignant neoplasm of nipple and areola of male breast
Cancer	175.9	ICD9	Malignant neoplasm of other and unspecified sites of male breast
Cancer	180	ICD9	Malignant neoplasm of cervix uteri
Cancer	180	ICD9	Malignant neoplasm of endocervix
Cancer	180.1	ICD9	Malignant neoplasm of exocervix
Cancer	180.8	ICD9	Malignant neoplasm of other specified sites of cervix
Cancer	180.9	ICD9	Malignant neoplasm of cervix uteri
Cancer	184	ICD9	Malignant neoplasm of vagina
Cancer	184.1	ICD9	Malignant neoplasm of labia majora
Cancer	184.2	ICD9	Malignant neoplasm of labia minora
Cancer	184.3	ICD9	Malignant neoplasm of clitoris
Cancer	184.4	ICD9	Malignant neoplasm of vulva

Cancer	185	ICD9	Malignant neoplasm of prostate
Cancer	187	ICD9	Malignant neoplasm of penis and other male genital organs
Cancer	190	ICD9	Malignant neoplasm of eye
Cancer	190	ICD9	Malignant neoplasm of eyeball
Cancer	190.1	ICD9	Malignant neoplasm of orbit
Cancer	190.2	ICD9	Malignant neoplasm of lacrimal gland
Cancer	190.3	ICD9	Malignant neoplasm of conjunctiva
Cancer	190.4	ICD9	Malignant neoplasm of cornea
Cancer	190.5	ICD9	Malignant neoplasm of retina
Cancer	190.6	ICD9	Malignant neoplasm of choroid
Cancer	190.7	ICD9	Malignant neoplasm of lacrimal duct
Cancer	190.8	ICD9	Malignant neoplasm of other specified sites of eye
Cancer	190.9	ICD9	Malignant neoplasm of eye
Cancer	191	ICD9	Malignant neoplasm of brain
Cancer	191	ICD9	Malignant neoplasm of cerebrum
Cancer	191.1	ICD9	Malignant neoplasm of frontal lobe
Cancer	191.2	ICD9	Malignant neoplasm of temporal lobe
Cancer	191.3	ICD9	Malignant neoplasm of parietal lobe
Cancer	191.4	ICD9	Malignant neoplasm of occipital lobe
Cancer	191.5	ICD9	Malignant neoplasm of ventricles
Cancer	191.6	ICD9	Malignant neoplasm of cerebellum NOS
Cancer	191.7	ICD9	Malignant neoplasm of brain stem
Cancer	191.8	ICD9	Malignant neoplasm of other parts of brain
Cancer	191.9	ICD9	Malignant neoplasm of brain
Cancer	192	ICD9	Malignant neoplasm of other and unspecified parts of nervous system
Cancer	192	ICD9	Malignant neoplasm of cranial nerves
Cancer	192.1	ICD9	Malignant neoplasm of cerebral meninges
Cancer	192.2	ICD9	Malignant neoplasm of spinal cord
Cancer	192.3	ICD9	Malignant neoplasm of spinal meninges
Cancer	192.8	ICD9	Malignant neoplasm of other specified sites of nervous system
Cancer	192.9	ICD9	Malignant neoplasm of nervous system
Cancer	193	ICD9	Malignant neoplasm of thyroid gland
Cancer	194	ICD9	Malignant neoplasm of other endocrine glands and related structures

Cancer	194	ICD9	Malignant neoplasm of adrenal gland
Cancer	194.1	ICD9	Malignant neoplasm of parathyroid gland
Cancer	194.3	ICD9	Malignant neoplasm of pituitary gland and craniopharyngeal duct
Cancer	194.4	ICD9	Malignant neoplasm of pineal gland
Cancer	194.5	ICD9	Malignant neoplasm of carotid body
Cancer	194.6	ICD9	Malignant neoplasm of aortic body and other paraganglia
Cancer	194.8	ICD9	Malignant neoplasm of other endocrine glands and related structures
Cancer	194.9	ICD9	Malignant neoplasm of endocrine gland
Cancer	195.1	ICD9	Malignant neoplasm of thorax
Cancer	202	ICD9	Other malignant neoplasms of lymphoid and histiocytic tissue
Cancer	202.3	ICD9	Malignant histiocytosis
Cancer	202.3	ICD9	Malignant histiocytosis
Cancer	202.31	ICD9	Malignant histiocytosis involving lymph nodes of head
Cancer	202.32	ICD9	Malignant histiocytosis involving intrathoracic lymph nodes
Cancer	202.33	ICD9	Malignant histiocytosis involving intra-abdominal lymph nodes
Cancer	202.34	ICD9	Malignant histiocytosis involving lymph nodes of axilla and upper limb
Cancer	202.35	ICD9	Malignant histiocytosis involving lymph nodes of inguinal region and lower limb
Cancer	202.36	ICD9	Malignant histiocytosis involving intrapelvic lymph nodes
Cancer	202.37	ICD9	Malignant histiocytosis involving spleen
Cancer	202.38	ICD9	Malignant histiocytosis involving lymph nodes of multiple sites
Cancer	202.5	ICD9	Letterer-Siwe disease
Cancer	202.5	ICD9	Letterer-Siwe disease
Cancer	202.51	ICD9	Letterer-Siwe disease involving lymph nodes of head
Cancer	202.52	ICD9	Letterer-Siwe disease involving intrathoracic lymph nodes
Cancer	202.53	ICD9	Letterer-Siwe disease involving intra-abdominal lymph nodes

Cancer	202.54	ICD9	Letterer-Siwe disease involving lymph nodes of axilla and upper limb
Cancer	202.55	ICD9	Letterer-Siwe disease involving lymph nodes of inguinal region and lower limb
Cancer	202.56	ICD9	Letterer-Siwe disease involving intrapelvic lymph nodes
Cancer	202.57	ICD9	Letterer-Siwe disease involving spleen
Cancer	202.58	ICD9	Letterer-Siwe disease involving lymph nodes of multiple sites
Cancer	202.6	ICD9	Malignant mast cell tumors
Cancer	202.6	ICD9	Malignant mast cell tumors
Cancer	202.61	ICD9	Malignant mast cell tumors involving lymph nodes of head
Cancer	202.62	ICD9	Malignant mast cell tumors involving intrathoracic lymph nodes
Cancer	202.63	ICD9	Malignant mast cell tumors involving intra-abdominal lymph nodes
Cancer	202.64	ICD9	Malignant mast cell tumors involving lymph nodes of axilla and upper limb
Cancer	202.65	ICD9	Malignant mast cell tumors involving lymph nodes of inguinal region and lower limb
Cancer	202.66	ICD9	Malignant mast cell tumors involving intrapelvic lymph nodes
Cancer	202.67	ICD9	Malignant mast cell tumors involving spleen
Cancer	202.68	ICD9	Malignant mast cell tumors involving lymph nodes of multiple sites
Cancer	209.1	ICD9	Malignant carcinoid tumors of the appendix
Cancer	209.1	ICD9	Malignant carcinoid tumor of the large intestine
Cancer	209.11	ICD9	Malignant carcinoid tumor of the appendix
Cancer	209.12	ICD9	Malignant carcinoid tumor of the cecum
Cancer	209.13	ICD9	Malignant carcinoid tumor of the ascending colon
Cancer	209.14	ICD9	Malignant carcinoid tumor of the transverse colon

Cancer	209.15	ICD9	Malignant carcinoid tumor of the descending colon
Cancer	209.16	ICD9	Malignant carcinoid tumor of the sigmoid colon
Cancer	209.2	ICD9	Malignant carcinoid tumors of other and unspecified sites
Cancer	209.2	ICD9	Malignant carcinoid tumor of unknown primary site
Cancer	209.21	ICD9	Malignant carcinoid tumor of the bronchus and lung
Cancer	209.22	ICD9	Malignant carcinoid tumor of the thymus
Cancer	209.23	ICD9	Malignant carcinoid tumor of the stomach
Cancer	209.24	ICD9	Malignant carcinoid tumor of the kidney
Cancer	209.29	ICD9	Malignant carcinoid tumors of other sites
Cancer	209.3	ICD9	Malignant poorly differentiated neuroendocrine tumors
Cancer	209.3	ICD9	Malignant poorly differentiated neuroendocrine carcinoma
Cancer	209.31	ICD9	Merkel cell carcinoma of the face (ADDED)
Cancer	209.32	ICD9	Merkel cell carcinoma of the scalp & neck (ADDED)
Cancer	209.33	ICD9	Merkel cell carcinoma of the upper limb (ADDED)
Cancer	209.34	ICD9	Merkel cell carcinoma of the lower limb (ADDED)
Cancer	209.35	ICD9	Merkel cell carcinoma of the trunk (ADDED)
Cancer	209.36	ICD9	Merkel cell carcinoma of other sites (ADDED)
Cancer	209.7	ICD9	Secondary neuroendocrine tumor
Cancer	209.75	ICD9	Merkel cell carcinoma
Cancer	230	ICD9	Carcinoma in situ of lip
Cancer	230.1	ICD9	Carcinoma in situ of esophagus
Cancer	230.2	ICD9	Carcinoma in situ of stomach
Cancer	230.3	ICD9	Carcinoma in situ of colon
Cancer	230.8	ICD9	Carcinoma in situ of liver and biliary system

Cancer	231	ICD9	Carcinoma in situ of respiratory system
Cancer	231	ICD9	Carcinoma in situ of larynx
Cancer	231.1	ICD9	Carcinoma in situ of trachea
Cancer	231.2	ICD9	Carcinoma in situ of bronchus and lung
Cancer	231.8	ICD9	Carcinoma in situ of other specified parts of respiratory system
Cancer	231.9	ICD9	Carcinoma in situ of respiratory system
Cancer	232	ICD9	Carcinoma in situ of skin
Cancer	233	ICD9	Carcinoma in situ of breast and genitourinary system
Cancer	233	ICD9	Carcinoma in situ of breast
Cancer	233.3	ICD9	Carcinoma in situ of other and unspecified female genital organs
Cancer	233.3	ICD9	Carcinoma in situ of unspecified female genital organ
Cancer	233.31	ICD9	Carcinoma in situ of vagina
Cancer	233.32	ICD9	Carcinoma in situ of vulva
Cancer	233.39	ICD9	Carcinoma in situ of other female genital organ
Cancer	233.4	ICD9	Carcinoma in situ of prostate
Cancer	233.5	ICD9	Carcinoma in situ of penis
Cancer	233.6	ICD9	Carcinoma in situ of other and unspecified male genital organs
Cancer	233.7	ICD9	Carcinoma in situ of bladder
Cancer	233.9	ICD9	Carcinoma in situ of other and unspecified urinary organs
Cancer	234	ICD9	Carcinoma in situ of other and unspecified sites
Cancer	234	ICD9	Carcinoma in situ of eye
Cancer	234.8	ICD9	Carcinoma in situ of other specified sites
Cancer	234.9	ICD9	Carcinoma in situ
Cancer	236	ICD9	Neoplasm of uncertain behavior of uterus
Cancer	236.1	ICD9	Neoplasm of uncertain behavior of placenta
Cancer	236.2	ICD9	Neoplasm of uncertain behavior of ovary
Cancer	236.3	ICD9	Neoplasm of uncertain behavior of other and unspecified female genital organs
Cancer	236.7	ICD9	Neoplasm of uncertain behavior of bladder

Cancer	239.4	ICD9	Neoplasm of unspecified nature of bladder
Cancer	338.3	ICD9	Neoplasm related pain (acute) (chronic)
Cancer	795.82	ICD9	Elevated cancer antigen 125 [CA 125]
Cancer	V10.01	ICD10	Personal history of malignant neoplasm of tongue
Cancer	V10.03	ICD10	Personal history of malignant neoplasm of esophagus
Cancer	V10.04	ICD10	Personal history of malignant neoplasm of stomach
Cancer	V10.05	ICD10	Personal history of malignant neoplasm of large intestine
Cancer	V10.1	ICD10	Personal history of malignant neoplasm of trachea
Cancer	V10.11	ICD10	Personal history of malignant neoplasm of bronchus and lung
Cancer	V10.12	ICD10	Personal history of malignant neoplasm of trachea
Cancer	V10.2	ICD10	Personal history of malignant neoplasm of other respiratory and intrathoracic organs
Cancer	V10.20	ICD10	Personal history of malignant neoplasm of unspecified respiratory organ
Cancer	V10.21	ICD10	Personal history of malignant neoplasm of larynx
Cancer	V10.22	ICD10	Personal history of malignant neoplasm of nasal cavities
Cancer	V10.29	ICD10	Personal history of malignant neoplasm of other respiratory and intrathoracic organs
Cancer	V10.41	ICD10	Personal history of malignant neoplasm of cervix uteri
Cancer	V10.46	ICD10	Personal history of malignant neoplasm of prostate
Cancer	V10.48	ICD10	Personal history of malignant neoplasm of epididymis
Cancer	V10.52	ICD10	Personal history of malignant neoplasm of kidney
Cancer	V10.7	ICD10	Personal history of other lymphatic and hematopoietic neoplasms

Cancer	V10.79	ICD10	Personal history of other lymphatic and hematopoietic neoplasms
Cancer	V10.81	ICD10	Personal history of malignant neoplasm of bone
Cancer	V10.83	ICD10	Personal history of other malignant neoplasm of skin
Cancer	V10.84	ICD10	Personal history of malignant neoplasm of eye
Cancer	V10.85	ICD10	Personal history of malignant neoplasm of brain
Cancer	V10.86	ICD10	Personal history of malignant neoplasm of other parts of nervous system
Cancer	V10.87	ICD10	Personal history of malignant neoplasm of thyroid
Cancer	V10.88	ICD10	Personal history of malignant neoplasm of other endocrine glands and related structures
Cancer	C00	ICD10	Malignant neoplasm of lip
Cancer	C00.0	ICD10	Malignant neoplasm of external upper lip
Cancer	C00.1	ICD10	Malignant neoplasm of external lower lip
Cancer	C00.2	ICD10	Malignant neoplasm of external lip
Cancer	C00.3	ICD10	Malignant neoplasm of upper lip
Cancer	C00.4	ICD10	Malignant neoplasm of lower lip
Cancer	C00.5	ICD10	Malignant neoplasm of lip
Cancer	C00.6	ICD10	Malignant neoplasm of commissure of lip
Cancer	C00.8	ICD10	Malignant neoplasm of overlapping sites of lip
Cancer	C00.9	ICD10	Malignant neoplasm of lip
Cancer	C01	ICD10	Malignant neoplasm of base of tongue
Cancer	C02	ICD10	Malignant neoplasm of other and unspecified parts of tongue
Cancer	C02.0	ICD10	Malignant neoplasm of dorsal surface of tongue
Cancer	C02.1	ICD10	Malignant neoplasm of border of tongue
Cancer	C02.2	ICD10	Malignant neoplasm of ventral surface of tongue

Cancer	C02.3	ICD10	Malignant neoplasm of anterior two-thirds of tongue
Cancer	C02.4	ICD10	Malignant neoplasm of lingual tonsil
Cancer	C02.8	ICD10	Malignant neoplasm of overlapping sites of tongue
Cancer	C02.9	ICD10	Malignant neoplasm of tongue
Cancer	C03	ICD10	Malignant neoplasm of gum
Cancer	C03.0	ICD10	Malignant neoplasm of upper gum
Cancer	C03.1	ICD10	Malignant neoplasm of lower gum
Cancer	C03.9	ICD10	Malignant neoplasm of gum
Cancer	C04	ICD10	Malignant neoplasm of floor of mouth
Cancer	C04.0	ICD10	Malignant neoplasm of anterior floor of mouth
Cancer	C04.1	ICD10	Malignant neoplasm of lateral floor of mouth
Cancer	C04.8	ICD10	Malignant neoplasm of overlapping sites of floor of mouth
Cancer	C04.9	ICD10	Malignant neoplasm of floor of mouth
Cancer	C05	ICD10	Malignant neoplasm of palate
Cancer	C05.0	ICD10	Malignant neoplasm of hard palate
Cancer	C05.1	ICD10	Malignant neoplasm of soft palate
Cancer	C05.2	ICD10	Malignant neoplasm of uvula
Cancer	C05.8	ICD10	Malignant neoplasm of overlapping sites of palate
Cancer	C05.9	ICD10	Malignant neoplasm of palate
Cancer	C06	ICD10	Malignant neoplasm of other and unspecified parts of mouth
Cancer	C06.0	ICD10	Malignant neoplasm of cheek mucosa
Cancer	C06.1	ICD10	Malignant neoplasm of vestibule of mouth
Cancer	C06.2	ICD10	Malignant neoplasm of retromolar area
Cancer	C06.8	ICD10	Malignant neoplasm of overlapping sites of other and unspecified parts of mouth
Cancer	C06.80	ICD10	Malignant neoplasm of overlapping sites of unspecified parts of mouth
Cancer	C06.89	ICD10	Malignant neoplasm of overlapping sites of other parts of mouth
Cancer	C06.9	ICD10	Malignant neoplasm of mouth
Cancer	C07	ICD10	Malignant neoplasm of parotid gland

Cancer	C08	ICD10	Malignant neoplasm of other and unspecified major salivary glands
Cancer	C08.0	ICD10	Malignant neoplasm of submandibular gland
Cancer	C08.1	ICD10	Malignant neoplasm of sublingual gland
Cancer	C08.9	ICD10	Malignant neoplasm of major salivary gland
Cancer	C09	ICD10	Malignant neoplasm of tonsil
Cancer	C09.0	ICD10	Malignant neoplasm of tonsillar fossa
Cancer	C09.1	ICD10	Malignant neoplasm of tonsillar pillar (anterior) (posterior)
Cancer	C09.8	ICD10	Malignant neoplasm of overlapping sites of tonsil
Cancer	C09.9	ICD10	Malignant neoplasm of tonsil
Cancer	C10	ICD10	Malignant neoplasm of oropharynx
Cancer	C10.0	ICD10	Malignant neoplasm of vallecula
Cancer	C10.1	ICD10	Malignant neoplasm of anterior surface of epiglottis
Cancer	C10.2	ICD10	Malignant neoplasm of lateral wall of oropharynx
Cancer	C10.3	ICD10	Malignant neoplasm of posterior wall of oropharynx
Cancer	C10.4	ICD10	Malignant neoplasm of branchial cleft
Cancer	C10.8	ICD10	Malignant neoplasm of overlapping sites of oropharynx
Cancer	C10.9	ICD10	Malignant neoplasm of oropharynx
Cancer	C11	ICD10	Malignant neoplasm of nasopharynx
Cancer	C11.0	ICD10	Malignant neoplasm of superior wall of nasopharynx
Cancer	C11.1	ICD10	Malignant neoplasm of posterior wall of nasopharynx
Cancer	C11.2	ICD10	Malignant neoplasm of lateral wall of nasopharynx
Cancer	C11.3	ICD10	Malignant neoplasm of anterior wall of nasopharynx
Cancer	C11.8	ICD10	Malignant neoplasm of overlapping sites of nasopharynx
Cancer	C11.9	ICD10	Malignant neoplasm of nasopharynx
Cancer	C12	ICD10	Malignant neoplasm of pyriform sinus
Cancer	C13	ICD10	Malignant neoplasm of hypopharynx

Cancer	C13.0	ICD10	Malignant neoplasm of postcricoid region
Cancer	C13.1	ICD10	Malignant neoplasm of aryepiglottic fold
Cancer	C13.2	ICD10	Malignant neoplasm of posterior wall of hypopharynx
Cancer	C13.8	ICD10	Malignant neoplasm of overlapping sites of hypopharynx
Cancer	C13.9	ICD10	Malignant neoplasm of hypopharynx
Cancer	C14	ICD10	Malignant neoplasm of other and ill-defined sites in the lip
Cancer	C14.0	ICD10	Malignant neoplasm of pharynx
Cancer	C14.2	ICD10	Malignant neoplasm of Waldeyer's ring
Cancer	C14.8	ICD10	Malignant neoplasm of overlapping sites of lip
Cancer	C15	ICD10	Malignant neoplasm of esophagus
Cancer	C15.3	ICD10	Malignant neoplasm of upper third of esophagus
Cancer	C15.4	ICD10	Malignant neoplasm of middle third of esophagus
Cancer	C15.5	ICD10	Malignant neoplasm of lower third of esophagus
Cancer	C15.8	ICD10	Malignant neoplasm of overlapping sites of esophagus
Cancer	C15.9	ICD10	Malignant neoplasm of esophagus
Cancer	C16	ICD10	Malignant neoplasm of stomach
Cancer	C16.0	ICD10	Malignant neoplasm of cardia
Cancer	C16.1	ICD10	Malignant neoplasm of fundus of stomach
Cancer	C16.2	ICD10	Malignant neoplasm of body of stomach
Cancer	C16.3	ICD10	Malignant neoplasm of pyloric antrum
Cancer	C16.4	ICD10	Malignant neoplasm of pylorus
Cancer	C16.5	ICD10	Malignant neoplasm of lesser curvature of stomach
Cancer	C16.6	ICD10	Malignant neoplasm of greater curvature of stomach
Cancer	C16.8	ICD10	Malignant neoplasm of overlapping sites of stomach
Cancer	C16.9	ICD10	Malignant neoplasm of stomach
Cancer	C18	ICD10	Malignant neoplasm of colon
Cancer	C18.0	ICD10	Malignant neoplasm of cecum

Cancer	C18.1	ICD10	Malignant neoplasm of appendix
Cancer	C18.2	ICD10	Malignant neoplasm of ascending colon
Cancer	C18.3	ICD10	Malignant neoplasm of hepatic flexure
Cancer	C18.4	ICD10	Malignant neoplasm of transverse colon
Cancer	C18.5	ICD10	Malignant neoplasm of splenic flexure
Cancer	C18.6	ICD10	Malignant neoplasm of descending colon
Cancer	C18.7	ICD10	Malignant neoplasm of sigmoid colon
Cancer	C18.8	ICD10	Malignant neoplasm of overlapping sites of colon
Cancer	C18.9	ICD10	Malignant neoplasm of colon
Cancer	C21.2	ICD10	Malignant neoplasm of cloacogenic zone
Cancer	C21.8	ICD10	Malignant neoplasm of overlapping sites of rectum
Cancer	C22	ICD10	Malignant neoplasm of liver and intrahepatic bile ducts
Cancer	C22.1	ICD10	Intrahepatic bile duct carcinoma
Cancer	C22.9	ICD10	Malignant neoplasm of liver
Cancer	C25	ICD10	Malignant neoplasm of pancreas
Cancer	C25.0	ICD10	Malignant neoplasm of head of pancreas
Cancer	C25.1	ICD10	Malignant neoplasm of body of pancreas
Cancer	C25.2	ICD10	Malignant neoplasm of tail of pancreas
Cancer	C25.3	ICD10	Malignant neoplasm of pancreatic duct
Cancer	C25.4	ICD10	Malignant neoplasm of endocrine pancreas
Cancer	C25.7	ICD10	Malignant neoplasm of other parts of pancreas
Cancer	C25.8	ICD10	Malignant neoplasm of overlapping sites of pancreas
Cancer	C25.9	ICD10	Malignant neoplasm of pancreas
Cancer	C26.0	ICD10	Malignant neoplasm of intestinal tract
Cancer	C30.0	ICD10	Malignant neoplasm of nasal cavity
Cancer	C30.1	ICD10	Malignant neoplasm of middle ear
Cancer	C31	ICD10	Malignant neoplasm of accessory sinuses
Cancer	C31.0	ICD10	Malignant neoplasm of maxillary sinus
Cancer	C31.1	ICD10	Malignant neoplasm of ethmoidal sinus
Cancer	C31.2	ICD10	Malignant neoplasm of frontal sinus
Cancer	C31.3	ICD10	Malignant neoplasm of sphenoid sinus
Cancer	C31.8	ICD10	Malignant neoplasm of overlapping sites of accessory sinuses

Cancer	C31.9	ICD10	Malignant neoplasm of accessory sinus
Cancer	C32	ICD10	Malignant neoplasm of larynx
Cancer	C32.0	ICD10	Malignant neoplasm of glottis
Cancer	C32.1	ICD10	Malignant neoplasm of supraglottis
Cancer	C32.2	ICD10	Malignant neoplasm of subglottis
Cancer	C32.3	ICD10	Malignant neoplasm of laryngeal cartilage
Cancer	C32.8	ICD10	Malignant neoplasm of overlapping sites of larynx
Cancer	C32.9	ICD10	Malignant neoplasm of larynx
Cancer	C33	ICD10	Malignant neoplasm of trachea
Cancer	C34	ICD10	Malignant neoplasm of bronchus and lung
Cancer	C34.0	ICD10	Malignant neoplasm of main bronchus
Cancer	C34.00	ICD10	Malignant neoplasm of unspecified main bronchus
Cancer	C34.01	ICD10	Malignant neoplasm of right main bronchus
Cancer	C34.02	ICD10	Malignant neoplasm of left main bronchus
Cancer	C34.1	ICD10	Malignant neoplasm of upper lobe
Cancer	C34.10	ICD10	Malignant neoplasm of upper lobe
Cancer	C34.11	ICD10	Malignant neoplasm of upper lobe
Cancer	C34.12	ICD10	Malignant neoplasm of upper lobe
Cancer	C34.2	ICD10	Malignant neoplasm of middle lobe
Cancer	C34.3	ICD10	Malignant neoplasm of lower lobe
Cancer	C34.30	ICD10	Malignant neoplasm of lower lobe
Cancer	C34.31	ICD10	Malignant neoplasm of lower lobe
Cancer	C34.32	ICD10	Malignant neoplasm of lower lobe
Cancer	C34.8	ICD10	Malignant neoplasm of overlapping sites of bronchus and lung
Cancer	C34.80	ICD10	Malignant neoplasm of overlapping sites of unspecified bronchus and lung
Cancer	C34.81	ICD10	Malignant neoplasm of overlapping sites of right bronchus and lung
Cancer	C34.82	ICD10	Malignant neoplasm of overlapping sites of left bronchus and lung
Cancer	C34.9	ICD10	Malignant neoplasm of unspecified part of bronchus or lung

Cancer	C34.90	ICD10	Malignant neoplasm of unspecified part of unspecified bronchus or lung
Cancer	C34.91	ICD10	Malignant neoplasm of unspecified part of right bronchus or lung
Cancer	C34.92	ICD10	Malignant neoplasm of unspecified part of left bronchus or lung
Cancer	C37	ICD10	Malignant neoplasm of thymus
Cancer	C38.0	ICD10	Malignant neoplasm of heart
Cancer	C38.1	ICD10	Malignant neoplasm of anterior mediastinum
Cancer	C38.2	ICD10	Malignant neoplasm of posterior mediastinum
Cancer	C38.3	ICD10	Malignant neoplasm of mediastinum
Cancer	C38.4	ICD10	Malignant neoplasm of pleura
Cancer	C38.8	ICD10	Malignant neoplasm of overlapping sites of heart
Cancer	C39	ICD10	Malignant neoplasm of other and ill-defined sites in the respiratory system and intrathoracic organs
Cancer	C39.0	ICD10	Malignant neoplasm of upper respiratory tract
Cancer	C39.9	ICD10	Malignant neoplasm of lower respiratory tract
Cancer	C40	ICD10	Malignant neoplasm of bone and articular cartilage of limbs
Cancer	C40.0	ICD10	Malignant neoplasm of scapula and long bones of upper limb
Cancer	C40.00	ICD10	Malignant neoplasm of scapula and long bones of unspecified upper limb
Cancer	C40.01	ICD10	Malignant neoplasm of scapula and long bones of right upper limb
Cancer	C40.02	ICD10	Malignant neoplasm of scapula and long bones of left upper limb
Cancer	C40.1	ICD10	Malignant neoplasm of short bones of upper limb
Cancer	C40.10	ICD10	Malignant neoplasm of short bones of unspecified upper limb
Cancer	C40.11	ICD10	Malignant neoplasm of short bones of right upper limb

Cancer	C40.12	ICD10	Malignant neoplasm of short bones of left upper limb
Cancer	C40.2	ICD10	Malignant neoplasm of long bones of lower limb
Cancer	C40.20	ICD10	Malignant neoplasm of long bones of unspecified lower limb
Cancer	C40.21	ICD10	Malignant neoplasm of long bones of right lower limb
Cancer	C40.22	ICD10	Malignant neoplasm of long bones of left lower limb
Cancer	C40.3	ICD10	Malignant neoplasm of short bones of lower limb
Cancer	C40.30	ICD10	Malignant neoplasm of short bones of unspecified lower limb
Cancer	C40.31	ICD10	Malignant neoplasm of short bones of right lower limb
Cancer	C40.32	ICD10	Malignant neoplasm of short bones of left lower limb
Cancer	C40.8	ICD10	Malignant neoplasm of overlapping sites of bone and articular cartilage of limb
Cancer	C40.80	ICD10	Malignant neoplasm of overlapping sites of bone and articular cartilage of unspecified limb
Cancer	C40.81	ICD10	Malignant neoplasm of overlapping sites of bone and articular cartilage of right limb
Cancer	C40.82	ICD10	Malignant neoplasm of overlapping sites of bone and articular cartilage of left limb
Cancer	C40.9	ICD10	Malignant neoplasm of unspecified bones and articular cartilage of limb
Cancer	C40.90	ICD10	Malignant neoplasm of unspecified bones and articular cartilage of unspecified limb
Cancer	C40.91	ICD10	Malignant neoplasm of unspecified bones and articular cartilage of right limb
Cancer	C40.92	ICD10	Malignant neoplasm of unspecified bones and articular cartilage of left limb

Cancer	C41	ICD10	Malignant neoplasm of bone and articular cartilage of other and unspecified sites
Cancer	C41.0	ICD10	Malignant neoplasm of bones of skull and face
Cancer	C41.1	ICD10	Malignant neoplasm of mandible
Cancer	C41.2	ICD10	Malignant neoplasm of vertebral column
Cancer	C41.3	ICD10	Malignant neoplasm of ribs
Cancer	C41.4	ICD10	Malignant neoplasm of pelvic bones
Cancer	C41.9	ICD10	Malignant neoplasm of bone and articular cartilage
Cancer	C44.0	ICD10	Other and unspecified malignant neoplasm of skin of lip
Cancer	C44.00	ICD10	Unspecified malignant neoplasm of skin of lip
Cancer	C44.09	ICD10	Other specified malignant neoplasm of skin of lip
Cancer	C44.1	ICD10	Other and unspecified malignant neoplasm of skin of eyelid
Cancer	C44.10	ICD10	Unspecified malignant neoplasm of skin of eyelid
Cancer	C44.101	ICD10	Unspecified malignant neoplasm of skin of unspecified eyelid
Cancer	C44.102	ICD10	Unspecified malignant neoplasm of skin of right eyelid
Cancer	C44.109	ICD10	Unspecified malignant neoplasm of skin of left eyelid
Cancer	C44.11	ICD10	Basal cell carcinoma of skin of eyelid
Cancer	C44.12	ICD10	Squamous cell carcinoma of skin of eyelid
Cancer	C44.19	ICD10	Other specified malignant neoplasm of skin of eyelid
Cancer	C44.191	ICD10	Other specified malignant neoplasm of skin of unspecified eyelid
Cancer	C44.192	ICD10	Other specified malignant neoplasm of skin of right eyelid
Cancer	C44.199	ICD10	Other specified malignant neoplasm of skin of left eyelid

Cancer	C44.2	ICD10	Other and unspecified malignant neoplasm of skin of ear and external auricular canal
Cancer	C44.20	ICD10	Unspecified malignant neoplasm of skin of ear and external auricular canal
Cancer	C44.201	ICD10	Unspecified malignant neoplasm of skin of unspecified ear and external auricular canal
Cancer	C44.202	ICD10	Unspecified malignant neoplasm of skin of right ear and external auricular canal
Cancer	C44.209	ICD10	Unspecified malignant neoplasm of skin of left ear and external auricular canal
Cancer	C44.21	ICD10	Basal cell carcinoma of skin of ear and external auricular canal
Cancer	C44.22	ICD10	Squamous cell carcinoma of skin of ear and external auricular canal
Cancer	C44.29	ICD10	Other specified malignant neoplasm of skin of ear and external auricular canal
Cancer	C44.291	ICD10	Other specified malignant neoplasm of skin of unspecified ear and external auricular canal
Cancer	C44.292	ICD10	Other specified malignant neoplasm of skin of right ear and external auricular canal
Cancer	C44.299	ICD10	Other specified malignant neoplasm of skin of left ear and external auricular canal
Cancer	C44.30	ICD10	Unspecified malignant neoplasm of skin of other and unspecified parts of face
Cancer	C44.300	ICD10	Unspecified malignant neoplasm of skin of unspecified part of face
Cancer	C44.301	ICD10	Unspecified malignant neoplasm of skin of nose
Cancer	C44.309	ICD10	Unspecified malignant neoplasm of skin of other parts of face
Cancer	C44.31	ICD10	Basal cell carcinoma of skin of other and unspecified parts of face
Cancer	C44.39	ICD10	Other specified malignant neoplasm of skin of other and unspecified parts of face

Cancer	C44.390	ICD10	Other specified malignant neoplasm of skin of unspecified parts of face
Cancer	C44.391	ICD10	Other specified malignant neoplasm of skin of nose
Cancer	C44.399	ICD10	Other specified malignant neoplasm of skin of other parts of face
Cancer	C44.4	ICD10	Other and unspecified malignant neoplasm of skin of scalp and neck
Cancer	C44.40	ICD10	Unspecified malignant neoplasm of skin of scalp and neck
Cancer	C44.49	ICD10	Other specified malignant neoplasm of skin of scalp and neck
Cancer	C44.500	ICD10	Unspecified malignant neoplasm of anal skin
Cancer	C44.501	ICD10	Unspecified malignant neoplasm of skin of breast
Cancer	C44.509	ICD10	Unspecified malignant neoplasm of skin of other part of trunk
Cancer	C44.51	ICD10	Basal cell carcinoma of skin of trunk
Cancer	C44.52	ICD10	Squamous cell carcinoma of skin of trunk
Cancer	C44.59	ICD10	Other specified malignant neoplasm of skin of trunk
Cancer	C44.590	ICD10	Other specified malignant neoplasm of anal skin
Cancer	C44.591	ICD10	Other specified malignant neoplasm of skin of breast
Cancer	C44.599	ICD10	Other specified malignant neoplasm of skin of other part of trunk
Cancer	C44.6	ICD10	Other and unspecified malignant neoplasm of skin of upper limb
Cancer	C44.60	ICD10	Unspecified malignant neoplasm of skin of upper limb
Cancer	C44.601	ICD10	Unspecified malignant neoplasm of skin of unspecified upper limb
Cancer	C44.602	ICD10	Unspecified malignant neoplasm of skin of right upper limb
Cancer	C44.609	ICD10	Unspecified malignant neoplasm of skin of left upper limb
Cancer	C44.61	ICD10	Basal cell carcinoma of skin of upper limb

Cancer	C44.62	ICD10	Squamous cell carcinoma of skin of upper limb
Cancer	C44.69	ICD10	Other specified malignant neoplasm of skin of upper limb
Cancer	C44.691	ICD10	Other specified malignant neoplasm of skin of unspecified upper limb
Cancer	C44.692	ICD10	Other specified malignant neoplasm of skin of right upper limb
Cancer	C44.699	ICD10	Other specified malignant neoplasm of skin of left upper limb
Cancer	C44.7	ICD10	Other and unspecified malignant neoplasm of skin of lower limb
Cancer	C44.70	ICD10	Unspecified malignant neoplasm of skin of lower limb
Cancer	C44.701	ICD10	Unspecified malignant neoplasm of skin of unspecified lower limb
Cancer	C44.702	ICD10	Unspecified malignant neoplasm of skin of right lower limb
Cancer	C44.709	ICD10	Unspecified malignant neoplasm of skin of left lower limb
Cancer	C44.71	ICD10	Basal cell carcinoma of skin of lower limb
Cancer	C44.72	ICD10	Squamous cell carcinoma of skin of lower limb
Cancer	C44.79	ICD10	Other specified malignant neoplasm of skin of lower limb
Cancer	C44.791	ICD10	Other specified malignant neoplasm of skin of unspecified lower limb
Cancer	C44.792	ICD10	Other specified malignant neoplasm of skin of right lower limb
Cancer	C44.799	ICD10	Other specified malignant neoplasm of skin of left lower limb
Cancer	C44.8	ICD10	Other and unspecified malignant neoplasm of overlapping sites of skin
Cancer	C44.80	ICD10	Unspecified malignant neoplasm of overlapping sites of skin
Cancer	C44.89	ICD10	Other specified malignant neoplasm of overlapping sites of skin
Cancer	C44.9	ICD10	Other and unspecified malignant neoplasm of skin

Cancer	C44.90	ICD10	Unspecified malignant neoplasm of skin
Cancer	C44.99	ICD10	Other specified malignant neoplasm of skin
Cancer	C45.0	ICD10	Mesothelioma of pleura
Cancer	C45.2	ICD10	Mesothelioma of pericardium
Cancer	C47	ICD10	Malignant neoplasm of peripheral nerves and autonomic nervous system
Cancer	C47.0	ICD10	Malignant neoplasm of peripheral nerves of head
Cancer	C47.1	ICD10	Malignant neoplasm of peripheral nerves of upper limb
Cancer	C47.10	ICD10	Malignant neoplasm of peripheral nerves of unspecified upper limb
Cancer	C47.11	ICD10	Malignant neoplasm of peripheral nerves of right upper limb
Cancer	C47.12	ICD10	Malignant neoplasm of peripheral nerves of left upper limb
Cancer	C47.2	ICD10	Malignant neoplasm of peripheral nerves of lower limb
Cancer	C47.20	ICD10	Malignant neoplasm of peripheral nerves of unspecified lower limb
Cancer	C47.21	ICD10	Malignant neoplasm of peripheral nerves of right lower limb
Cancer	C47.22	ICD10	Malignant neoplasm of peripheral nerves of left lower limb
Cancer	C47.3	ICD10	Malignant neoplasm of peripheral nerves of thorax
Cancer	C47.4	ICD10	Malignant neoplasm of peripheral nerves of abdomen
Cancer	C47.5	ICD10	Malignant neoplasm of peripheral nerves of pelvis
Cancer	C47.6	ICD10	Malignant neoplasm of peripheral nerves of trunk
Cancer	C47.8	ICD10	Malignant neoplasm of overlapping sites of peripheral nerves and autonomic nervous system
Cancer	C47.9	ICD10	Malignant neoplasm of peripheral nerves and autonomic nervous system
Cancer	C49.0	ICD10	Malignant neoplasm of other connective and soft tissue

Cancer	C49.0	ICD10	Malignant neoplasm of connective and soft tissue of head
Cancer	C49.1	ICD10	Malignant neoplasm of connective and soft tissue of upper limb
Cancer	C49.10	ICD10	Malignant neoplasm of connective and soft tissue of unspecified upper limb
Cancer	C49.11	ICD10	Malignant neoplasm of connective and soft tissue of right upper limb
Cancer	C49.12	ICD10	Malignant neoplasm of connective and soft tissue of left upper limb
Cancer	C49.2	ICD10	Malignant neoplasm of connective and soft tissue of lower limb
Cancer	C49.20	ICD10	Malignant neoplasm of connective and soft tissue of unspecified lower limb
Cancer	C49.21	ICD10	Malignant neoplasm of connective and soft tissue of right lower limb
Cancer	C49.22	ICD10	Malignant neoplasm of connective and soft tissue of left lower limb
Cancer	C49.3	ICD10	Malignant neoplasm of connective and soft tissue of thorax
Cancer	C49.4	ICD10	Malignant neoplasm of connective and soft tissue of abdomen
Cancer	C49.5	ICD10	Malignant neoplasm of connective and soft tissue of pelvis
Cancer	C49.6	ICD10	Malignant neoplasm of connective and soft tissue of trunk
Cancer	C49.8	ICD10	Malignant neoplasm of overlapping sites of connective and soft tissue
Cancer	C49.9	ICD10	Malignant neoplasm of connective and soft tissue
Cancer	C49.A	ICD10	Gastrointestinal stromal tumor
Cancer	C49.A0	ICD10	Gastrointestinal stromal tumor
Cancer	C49.A1	ICD10	Gastrointestinal stromal tumor of esophagus
Cancer	C49.A2	ICD10	Gastrointestinal stromal tumor of stomach
Cancer	C49.A3	ICD10	Gastrointestinal stromal tumor of small intestine
Cancer	C49.A4	ICD10	Gastrointestinal stromal tumor of large intestine

Cancer	C49.A5	ICD10	Gastrointestinal stromal tumor of rectum
Cancer	C49.A9	ICD10	Gastrointestinal stromal tumor of other sites
Cancer	C4A	ICD10	Merkel cell carcinoma
Cancer	C4A.0	ICD10	Merkel cell carcinoma of lip
Cancer	C4A.1	ICD10	Merkel cell carcinoma of eyelid
Cancer	C4A.10	ICD10	Merkel cell carcinoma of unspecified eyelid
Cancer	C4A.11	ICD10	Merkel cell carcinoma of right eyelid
Cancer	C4A.12	ICD10	Merkel cell carcinoma of left eyelid
Cancer	C4A.2	ICD10	Merkel cell carcinoma of ear and external auricular canal
Cancer	C4A.20	ICD10	Merkel cell carcinoma of unspecified ear and external auricular canal
Cancer	C4A.21	ICD10	Merkel cell carcinoma of right ear and external auricular canal
Cancer	C4A.22	ICD10	Merkel cell carcinoma of left ear and external auricular canal
Cancer	C4A.3	ICD10	Merkel cell carcinoma of other and unspecified parts of face
Cancer	C4A.30	ICD10	Merkel cell carcinoma of unspecified part of face
Cancer	C4A.31	ICD10	Merkel cell carcinoma of nose
Cancer	C4A.39	ICD10	Merkel cell carcinoma of other parts of face
Cancer	C4A.4	ICD10	Merkel cell carcinoma of scalp and neck
Cancer	C4A.5	ICD10	Merkel cell carcinoma of trunk
Cancer	C4A.51	ICD10	Merkel cell carcinoma of anal skin
Cancer	C4A.52	ICD10	Merkel cell carcinoma of skin of breast
Cancer	C4A.59	ICD10	Merkel cell carcinoma of other part of trunk
Cancer	C4A.6	ICD10	Merkel cell carcinoma of upper limb
Cancer	C4A.60	ICD10	Merkel cell carcinoma of unspecified upper limb
Cancer	C4A.61	ICD10	Merkel cell carcinoma of right upper limb
Cancer	C4A.62	ICD10	Merkel cell carcinoma of left upper limb
Cancer	C4A.7	ICD10	Merkel cell carcinoma of lower limb

Cancer	C4A.70	ICD10	Merkel cell carcinoma of unspecified lower limb
Cancer	C4A.71	ICD10	Merkel cell carcinoma of right lower limb
Cancer	C4A.72	ICD10	Merkel cell carcinoma of left lower limb
Cancer	C4A.8	ICD10	Merkel cell carcinoma of overlapping sites
Cancer	C4A.9	ICD10	Merkel cell carcinoma
Cancer	C50.02	ICD10	Malignant neoplasm of nipple and areola
Cancer	C50.021	ICD10	Malignant neoplasm of nipple and areola
Cancer	C50.022	ICD10	Malignant neoplasm of nipple and areola
Cancer	C50.029	ICD10	Malignant neoplasm of nipple and areola
Cancer	C50.12	ICD10	Malignant neoplasm of central portion of breast
Cancer	C50.121	ICD10	Malignant neoplasm of central portion of right male breast
Cancer	C50.122	ICD10	Malignant neoplasm of central portion of left male breast
Cancer	C50.129	ICD10	Malignant neoplasm of central portion of unspecified male breast
Cancer	C50.22	ICD10	Malignant neoplasm of upper-inner quadrant of breast
Cancer	C50.221	ICD10	Malignant neoplasm of upper-inner quadrant of right male breast
Cancer	C50.222	ICD10	Malignant neoplasm of upper-inner quadrant of left male breast
Cancer	C50.229	ICD10	Malignant neoplasm of upper-inner quadrant of unspecified male breast
Cancer	C50.32	ICD10	Malignant neoplasm of lower-inner quadrant of breast
Cancer	C50.321	ICD10	Malignant neoplasm of lower-inner quadrant of right male breast
Cancer	C50.322	ICD10	Malignant neoplasm of lower-inner quadrant of left male breast
Cancer	C50.329	ICD10	Malignant neoplasm of lower-inner quadrant of unspecified male breast
Cancer	C50.42	ICD10	Malignant neoplasm of upper-outer quadrant of breast
Cancer	C50.421	ICD10	Malignant neoplasm of upper-outer quadrant of right male breast

Cancer	C50.422	ICD10	Malignant neoplasm of upper-outer quadrant of left male breast
Cancer	C50.429	ICD10	Malignant neoplasm of upper-outer quadrant of unspecified male breast
Cancer	C50.52	ICD10	Malignant neoplasm of lower-outer quadrant of breast
Cancer	C50.521	ICD10	Malignant neoplasm of lower-outer quadrant of right male breast
Cancer	C50.522	ICD10	Malignant neoplasm of lower-outer quadrant of left male breast
Cancer	C50.529	ICD10	Malignant neoplasm of lower-outer quadrant of unspecified male breast
Cancer	C50.62	ICD10	Malignant neoplasm of axillary tail of breast
Cancer	C50.621	ICD10	Malignant neoplasm of axillary tail of right male breast
Cancer	C50.622	ICD10	Malignant neoplasm of axillary tail of left male breast
Cancer	C50.629	ICD10	Malignant neoplasm of axillary tail of unspecified male breast
Cancer	C50.82	ICD10	Malignant neoplasm of overlapping sites of breast
Cancer	C50.821	ICD10	Malignant neoplasm of overlapping sites of right male breast
Cancer	C50.822	ICD10	Malignant neoplasm of overlapping sites of left male breast
Cancer	C50.829	ICD10	Malignant neoplasm of overlapping sites of unspecified male breast
Cancer	C50.92	ICD10	Malignant neoplasm of breast of unspecified site
Cancer	C50.921	ICD10	Malignant neoplasm of unspecified site of right male breast
Cancer	C50.922	ICD10	Malignant neoplasm of unspecified site of left male breast
Cancer	C50.929	ICD10	Malignant neoplasm of unspecified site of unspecified male breast
Cancer	C51	ICD10	Malignant neoplasm of vulva
Cancer	C51.0	ICD10	Malignant neoplasm of labium majus
Cancer	C51.1	ICD10	Malignant neoplasm of labium minus
Cancer	C51.2	ICD10	Malignant neoplasm of clitoris

Cancer	C51.9	ICD10	Malignant neoplasm of vulva
Cancer	C52	ICD10	Malignant neoplasm of vagina
Cancer	C53	ICD10	Malignant neoplasm of cervix uteri
Cancer	C53.0	ICD10	Malignant neoplasm of endocervix
Cancer	C53.1	ICD10	Malignant neoplasm of exocervix
Cancer	C53.8	ICD10	Malignant neoplasm of overlapping sites of cervix uteri
Cancer	C53.9	ICD10	Malignant neoplasm of cervix uteri
Cancer	C61	ICD10	Malignant neoplasm of prostate
Cancer	C69	ICD10	Malignant neoplasm of eye and adnexa
Cancer	C69.0	ICD10	Malignant neoplasm of conjunctiva
Cancer	C69.00	ICD10	Malignant neoplasm of unspecified conjunctiva
Cancer	C69.01	ICD10	Malignant neoplasm of right conjunctiva
Cancer	C69.02	ICD10	Malignant neoplasm of left conjunctiva
Cancer	C69.1	ICD10	Malignant neoplasm of cornea
Cancer	C69.10	ICD10	Malignant neoplasm of unspecified cornea
Cancer	C69.11	ICD10	Malignant neoplasm of right cornea
Cancer	C69.12	ICD10	Malignant neoplasm of left cornea
Cancer	C69.2	ICD10	Malignant neoplasm of retina
Cancer	C69.20	ICD10	Malignant neoplasm of unspecified retina
Cancer	C69.21	ICD10	Malignant neoplasm of right retina
Cancer	C69.22	ICD10	Malignant neoplasm of left retina
Cancer	C69.3	ICD10	Malignant neoplasm of choroid
Cancer	C69.30	ICD10	Malignant neoplasm of unspecified choroid
Cancer	C69.31	ICD10	Malignant neoplasm of right choroid
Cancer	C69.32	ICD10	Malignant neoplasm of left choroid
Cancer	C69.4	ICD10	Malignant neoplasm of ciliary body
Cancer	C69.40	ICD10	Malignant neoplasm of unspecified ciliary body
Cancer	C69.41	ICD10	Malignant neoplasm of right ciliary body
Cancer	C69.42	ICD10	Malignant neoplasm of left ciliary body
Cancer	C69.5	ICD10	Malignant neoplasm of lacrimal gland and duct
Cancer	C69.50	ICD10	Malignant neoplasm of unspecified lacrimal gland and duct

Cancer	C69.51	ICD10	Malignant neoplasm of right lacrimal gland and duct
Cancer	C69.52	ICD10	Malignant neoplasm of left lacrimal gland and duct
Cancer	C69.6	ICD10	Malignant neoplasm of orbit
Cancer	C69.60	ICD10	Malignant neoplasm of unspecified orbit
Cancer	C69.61	ICD10	Malignant neoplasm of right orbit
Cancer	C69.62	ICD10	Malignant neoplasm of left orbit
Cancer	C69.8	ICD10	Malignant neoplasm of overlapping sites of eye and adnexa
Cancer	C69.80	ICD10	Malignant neoplasm of overlapping sites of unspecified eye and adnexa
Cancer	C69.81	ICD10	Malignant neoplasm of overlapping sites of right eye and adnexa
Cancer	C69.82	ICD10	Malignant neoplasm of overlapping sites of left eye and adnexa
Cancer	C69.9	ICD10	Malignant neoplasm of unspecified site of eye
Cancer	C69.90	ICD10	Malignant neoplasm of unspecified site of unspecified eye
Cancer	C69.91	ICD10	Malignant neoplasm of unspecified site of right eye
Cancer	C69.92	ICD10	Malignant neoplasm of unspecified site of left eye
Cancer	C70	ICD10	Malignant neoplasm of meninges
Cancer	C70.0	ICD10	Malignant neoplasm of cerebral meninges
Cancer	C70.1	ICD10	Malignant neoplasm of spinal meninges
Cancer	C70.9	ICD10	Malignant neoplasm of meninges
Cancer	C71	ICD10	Malignant neoplasm of brain
Cancer	C71.0	ICD10	Malignant neoplasm of cerebrum
Cancer	C71.1	ICD10	Malignant neoplasm of frontal lobe
Cancer	C71.2	ICD10	Malignant neoplasm of temporal lobe
Cancer	C71.3	ICD10	Malignant neoplasm of parietal lobe
Cancer	C71.4	ICD10	Malignant neoplasm of occipital lobe
Cancer	C71.5	ICD10	Malignant neoplasm of cerebral ventricle
Cancer	C71.6	ICD10	Malignant neoplasm of cerebellum
Cancer	C71.7	ICD10	Malignant neoplasm of brain stem
Cancer	C71.8	ICD10	Malignant neoplasm of overlapping sites of brain

Cancer	C71.9	ICD10	Malignant neoplasm of brain
Cancer	C72	ICD10	Malignant neoplasm of spinal cord
Cancer	C72.0	ICD10	Malignant neoplasm of spinal cord
Cancer	C72.1	ICD10	Malignant neoplasm of cauda equina
Cancer	C72.2	ICD10	Malignant neoplasm of olfactory nerve
Cancer	C72.20	ICD10	Malignant neoplasm of unspecified olfactory nerve
Cancer	C72.21	ICD10	Malignant neoplasm of right olfactory nerve
Cancer	C72.22	ICD10	Malignant neoplasm of left olfactory nerve
Cancer	C72.3	ICD10	Malignant neoplasm of optic nerve
Cancer	C72.30	ICD10	Malignant neoplasm of unspecified optic nerve
Cancer	C72.31	ICD10	Malignant neoplasm of right optic nerve
Cancer	C72.32	ICD10	Malignant neoplasm of left optic nerve
Cancer	C72.4	ICD10	Malignant neoplasm of acoustic nerve
Cancer	C72.40	ICD10	Malignant neoplasm of unspecified acoustic nerve
Cancer	C72.41	ICD10	Malignant neoplasm of right acoustic nerve
Cancer	C72.42	ICD10	Malignant neoplasm of left acoustic nerve
Cancer	C72.5	ICD10	Malignant neoplasm of other and unspecified cranial nerves
Cancer	C72.50	ICD10	Malignant neoplasm of unspecified cranial nerve
Cancer	C72.59	ICD10	Malignant neoplasm of other cranial nerves
Cancer	C72.9	ICD10	Malignant neoplasm of central nervous system
Cancer	C73	ICD10	Malignant neoplasm of thyroid gland
Cancer	C74	ICD10	Malignant neoplasm of adrenal gland
Cancer	C74.0	ICD10	Malignant neoplasm of cortex of adrenal gland
Cancer	C74.00	ICD10	Malignant neoplasm of cortex of unspecified adrenal gland
Cancer	C74.01	ICD10	Malignant neoplasm of cortex of right adrenal gland

Cancer	C74.02	ICD10	Malignant neoplasm of cortex of left adrenal gland
Cancer	C74.1	ICD10	Malignant neoplasm of medulla of adrenal gland
Cancer	C74.10	ICD10	Malignant neoplasm of medulla of unspecified adrenal gland
Cancer	C74.11	ICD10	Malignant neoplasm of medulla of right adrenal gland
Cancer	C74.12	ICD10	Malignant neoplasm of medulla of left adrenal gland
Cancer	C74.9	ICD10	Malignant neoplasm of unspecified part of adrenal gland
Cancer	C74.90	ICD10	Malignant neoplasm of unspecified part of unspecified adrenal gland
Cancer	C74.91	ICD10	Malignant neoplasm of unspecified part of right adrenal gland
Cancer	C74.92	ICD10	Malignant neoplasm of unspecified part of left adrenal gland
Cancer	C75	ICD10	Malignant neoplasm of other endocrine glands and related structures
Cancer	C75.0	ICD10	Malignant neoplasm of parathyroid gland
Cancer	C75.1	ICD10	Malignant neoplasm of pituitary gland
Cancer	C75.2	ICD10	Malignant neoplasm of craniopharyngeal duct
Cancer	C75.3	ICD10	Malignant neoplasm of pineal gland
Cancer	C75.4	ICD10	Malignant neoplasm of carotid body
Cancer	C75.5	ICD10	Malignant neoplasm of aortic body and other paraganglia
Cancer	C75.8	ICD10	Malignant neoplasm with pluriglandular involvement
Cancer	C75.9	ICD10	Malignant neoplasm of endocrine gland
Cancer	C76.1	ICD10	Malignant neoplasm of thorax
Cancer	C7A.0	ICD10	Malignant carcinoid tumors
Cancer	C7A.0	ICD10	Malignant carcinoid tumors
Cancer	C7A.0	ICD10	Malignant carcinoid tumors
Cancer	C7A.00	ICD10	Malignant carcinoid tumor of unspecified site
Cancer	C7A.020	ICD10	Malignant carcinoid tumor of the appendix

Cancer	C7A.021	ICD10	Malignant carcinoid tumor of the cecum
Cancer	C7A.022	ICD10	Malignant carcinoid tumor of the ascending colon
Cancer	C7A.023	ICD10	Malignant carcinoid tumor of the transverse colon
Cancer	C7A.024	ICD10	Malignant carcinoid tumor of the descending colon
Cancer	C7A.025	ICD10	Malignant carcinoid tumor of the sigmoid colon
Cancer	C7A.029	ICD10	Malignant carcinoid tumor of the large intestine
Cancer	C7A.090	ICD10	Malignant carcinoid tumor of the bronchus and lung
Cancer	C7A.091	ICD10	Malignant carcinoid tumor of the thymus
Cancer	C7A.092	ICD10	Malignant carcinoid tumor of the stomach
Cancer	C7A.093	ICD10	Malignant carcinoid tumor of the kidney
Cancer	C7A.098	ICD10	Malignant carcinoid tumors of other sites
Cancer	C7A.1	ICD10	Malignant poorly differentiated neuroendocrine tumors
Cancer	C7A.8	ICD10	Other malignant neuroendocrine tumors
Cancer	C7B.00	ICD10	Secondary carcinoid tumors
Cancer	C7B.1	ICD10	Secondary Merkel cell carcinoma
Cancer	C96.0	ICD10	Multifocal and multisystemic (disseminated) Langerhans-cell histiocytosis
Cancer	C96.2	ICD10	Malignant mast cell neoplasm
Cancer	C96.22	ICD10	Mast cell sarcoma
Cancer	C96.A	ICD10	Histiocytic sarcoma
Cancer	D00.0	ICD10	Carcinoma in situ of lip
Cancer	D00.00	ICD10	Carcinoma in situ of oral cavity
Cancer	D00.01	ICD10	Carcinoma in situ of labial mucosa and vermillion border
Cancer	D00.02	ICD10	Carcinoma in situ of buccal mucosa
Cancer	D00.03	ICD10	Carcinoma in situ of gingiva and edentulous alveolar ridge
Cancer	D00.04	ICD10	Carcinoma in situ of soft palate
Cancer	D00.05	ICD10	Carcinoma in situ of hard palate
Cancer	D00.06	ICD10	Carcinoma in situ of floor of mouth

Cancer	D00.07	ICD10	Carcinoma in situ of tongue
Cancer	D00.08	ICD10	Carcinoma in situ of pharynx
Cancer	D00.1	ICD10	Carcinoma in situ of esophagus
Cancer	D00.2	ICD10	Carcinoma in situ of stomach
Cancer	D01.0	ICD10	Carcinoma in situ of colon
Cancer	D01.5	ICD10	Carcinoma in situ of liver
Cancer	D02.0	ICD10	Carcinoma in situ of larynx
Cancer	D02.1	ICD10	Carcinoma in situ of trachea
Cancer	D02.2	ICD10	Carcinoma in situ of bronchus and lung
Cancer	D02.20	ICD10	Carcinoma in situ of unspecified bronchus and lung
Cancer	D02.21	ICD10	Carcinoma in situ of right bronchus and lung
Cancer	D02.22	ICD10	Carcinoma in situ of left bronchus and lung
Cancer	D02.3	ICD10	Carcinoma in situ of other parts of respiratory system
Cancer	D02.4	ICD10	Carcinoma in situ of respiratory system
Cancer	D05	ICD10	Carcinoma in situ of breast
Cancer	D05.0	ICD10	Lobular carcinoma in situ of breast
Cancer	D05.00	ICD10	Lobular carcinoma in situ of unspecified breast
Cancer	D05.01	ICD10	Lobular carcinoma in situ of right breast
Cancer	D05.02	ICD10	Lobular carcinoma in situ of left breast
Cancer	D05.1	ICD10	Intraductal carcinoma in situ of breast
Cancer	D05.10	ICD10	Intraductal carcinoma in situ of unspecified breast
Cancer	D05.11	ICD10	Intraductal carcinoma in situ of right breast
Cancer	D05.12	ICD10	Intraductal carcinoma in situ of left breast
Cancer	D05.8	ICD10	Other specified type of carcinoma in situ of breast
Cancer	D05.80	ICD10	Other specified type of carcinoma in situ of unspecified breast
Cancer	D05.81	ICD10	Other specified type of carcinoma in situ of right breast
Cancer	D05.82	ICD10	Other specified type of carcinoma in situ of left breast

Cancer	D05.9	ICD10	Unspecified type of carcinoma in situ of breast
Cancer	D05.90	ICD10	Unspecified type of carcinoma in situ of unspecified breast
Cancer	D05.91	ICD10	Unspecified type of carcinoma in situ of right breast
Cancer	D05.92	ICD10	Unspecified type of carcinoma in situ of left breast
Cancer	D07.1	ICD10	Carcinoma in situ of vulva
Cancer	D07.2	ICD10	Carcinoma in situ of vagina
Cancer	D07.3	ICD10	Carcinoma in situ of other and unspecified female genital organs
Cancer	D07.30	ICD10	Carcinoma in situ of unspecified female genital organs
Cancer	D07.39	ICD10	Carcinoma in situ of other female genital organs
Cancer	D07.4	ICD10	Carcinoma in situ of penis
Cancer	D07.5	ICD10	Carcinoma in situ of prostate
Cancer	D07.6	ICD10	Carcinoma in situ of other and unspecified male genital organs
Cancer	D07.60	ICD10	Carcinoma in situ of unspecified male genital organs
Cancer	D07.61	ICD10	Carcinoma in situ of scrotum
Cancer	D07.69	ICD10	Carcinoma in situ of other male genital organs
Cancer	D09	ICD10	Carcinoma in situ of other and unspecified sites
Cancer	D09.0	ICD10	Carcinoma in situ of bladder
Cancer	D09.1	ICD10	Carcinoma in situ of other and unspecified urinary organs
Cancer	D09.10	ICD10	Carcinoma in situ of unspecified urinary organ
Cancer	D09.19	ICD10	Carcinoma in situ of other urinary organs
Cancer	D09.2	ICD10	Carcinoma in situ of eye
Cancer	D09.20	ICD10	Carcinoma in situ of unspecified eye
Cancer	D09.21	ICD10	Carcinoma in situ of right eye
Cancer	D09.22	ICD10	Carcinoma in situ of left eye
Cancer	D09.3	ICD10	Carcinoma in situ of thyroid and other endocrine glands
Cancer	D09.8	ICD10	Carcinoma in situ of other specified sites

Cancer	D09.9	ICD10	Carcinoma in situ
Cancer	D39	ICD10	Neoplasm of uncertain behavior of female genital organs
Cancer	D39.0	ICD10	Neoplasm of uncertain behavior of uterus
Cancer	D39.1	ICD10	Neoplasm of uncertain behavior of ovary
Cancer	D39.10	ICD10	Neoplasm of uncertain behavior of unspecified ovary
Cancer	D39.11	ICD10	Neoplasm of uncertain behavior of right ovary
Cancer	D39.12	ICD10	Neoplasm of uncertain behavior of left ovary
Cancer	D39.2	ICD10	Neoplasm of uncertain behavior of placenta
Cancer	D39.8	ICD10	Neoplasm of uncertain behavior of other specified female genital organs
Cancer	D39.9	ICD10	Neoplasm of uncertain behavior of female genital organ
Cancer	D41.4	ICD10	Neoplasm of uncertain behavior of bladder
Cancer	D49.4	ICD10	Neoplasm of unspecified behavior of bladder
Cancer	G89.3	ICD10	Neoplasm related pain (acute) (chronic)
Cancer	M90.6	ICD10	Osteitis deformans in neoplastic diseases
Cancer	N90.3	ICD10	Dysplasia of vulva
Cancer	R97.1	ICD10	Elevated cancer antigen 125 [CA 125]
Cancer	Z85.01	ICD10	Personal history of malignant neoplasm of esophagus
Cancer	Z85.02	ICD10	Personal history of malignant neoplasm of stomach
Cancer	Z85.020	ICD10	Personal history of malignant carcinoid tumor of stomach
Cancer	Z85.028	ICD10	Personal history of other malignant neoplasm of stomach
Cancer	Z85.03	ICD10	Personal history of malignant neoplasm of large intestine
Cancer	Z85.030	ICD10	Personal history of malignant carcinoid tumor of large intestine

Cancer	Z85.038	ICD10	Personal history of other malignant neoplasm of large intestine
Cancer	Z85.07	ICD10	Personal history of malignant neoplasm of pancreas
Cancer	Z85.1	ICD10	Personal history of malignant neoplasm of trachea
Cancer	Z85.11	ICD10	Personal history of malignant neoplasm of bronchus and lung
Cancer	Z85.110	ICD10	Personal history of malignant carcinoid tumor of bronchus and lung
Cancer	Z85.118	ICD10	Personal history of other malignant neoplasm of bronchus and lung
Cancer	Z85.12	ICD10	Personal history of malignant neoplasm of trachea
Cancer	Z85.2	ICD10	Personal history of malignant neoplasm of other respiratory and intrathoracic organs
Cancer	Z85.20	ICD10	Personal history of malignant neoplasm of unspecified respiratory organ
Cancer	Z85.21	ICD10	Personal history of malignant neoplasm of larynx
Cancer	Z85.22	ICD10	Personal history of malignant neoplasm of nasal cavities
Cancer	Z85.23	ICD10	Personal history of malignant neoplasm of thymus
Cancer	Z85.230	ICD10	Personal history of malignant carcinoid tumor of thymus
Cancer	Z85.238	ICD10	Personal history of other malignant neoplasm of thymus
Cancer	Z85.29	ICD10	Personal history of malignant neoplasm of other respiratory and intrathoracic organs
Cancer	Z85.3	ICD10	Personal history of malignant neoplasm of breast
Cancer	Z85.40	ICD10	Personal history of malignant neoplasm of unspecified female genital organ
Cancer	Z85.41	ICD10	Personal history of malignant neoplasm of cervix uteri
Cancer	Z85.44	ICD10	Personal history of malignant neoplasm of other female genital organs

Cancer	Z85.45	ICD10	Personal history of malignant neoplasm of unspecified male genital organ
Cancer	Z85.46	ICD10	Personal history of malignant neoplasm of prostate
Cancer	Z85.48	ICD10	Personal history of malignant neoplasm of epididymis
Cancer	Z85.49	ICD10	Personal history of malignant neoplasm of other male genital organs
Cancer	Z85.5	ICD10	Personal history of malignant neoplasm of urinary tract
Cancer	Z85.50	ICD10	Personal history of malignant neoplasm of unspecified urinary tract organ
Cancer	Z85.54	ICD10	Personal history of malignant neoplasm of ureter
Cancer	Z85.59	ICD10	Personal history of malignant neoplasm of other urinary tract organ
Cancer	Z85.7	ICD10	Personal history of other malignant neoplasms of lymphoid
Cancer	Z85.79	ICD10	Personal history of other malignant neoplasms of lymphoid
Cancer	Z85.81	ICD10	Personal history of malignant neoplasm of lip
Cancer	Z85.810	ICD10	Personal history of malignant neoplasm of tongue
Cancer	Z85.818	ICD10	Personal history of malignant neoplasm of other sites of lip
Cancer	Z85.819	ICD10	Personal history of malignant neoplasm of unspecified site of lip
Cancer	Z85.83	ICD10	Personal history of malignant neoplasm of bone and soft tissue
Cancer	Z85.830	ICD10	Personal history of malignant neoplasm of bone
Cancer	Z85.831	ICD10	Personal history of malignant neoplasm of soft tissue
Cancer	Z85.840	ICD10	Personal history of malignant neoplasm of eye
Cancer	Z85.841	ICD10	Personal history of malignant neoplasm of brain
Cancer	Z85.848	ICD10	Personal history of malignant neoplasm of other parts of nervous tissue

Cancer	Z85.850	ICD10	Personal history of malignant neoplasm of thyroid
Cancer	Z85.850	ICD10	Personal history of malignant neoplasm of thyroid
Cancer	Z85.858	ICD10	Personal history of malignant neoplasm of other endocrine glands
Chronic kidney disease	403	ICD9	Hypertensive chronic kidney disease
Chronic kidney disease	403	ICD9	Hypertensive chronic kidney disease
Chronic kidney disease	403	ICD9	Hypertensive chronic kidney disease
Chronic kidney disease	403.01	ICD9	Hypertensive renal disease
Chronic kidney disease	403.1	ICD9	Hypertensive renal disease
Chronic kidney disease	403.1	ICD9	Hypertensive renal disease
Chronic kidney disease	403.11	ICD9	Hypertensive renal disease
Chronic kidney disease	403.9	ICD9	Hypertensive renal disease
Chronic kidney disease	403.9	ICD9	Hypertensive renal disease
Chronic kidney disease	403.91	ICD9	Hypertensive renal disease
Chronic kidney disease	585.1	ICD9	Chronic kidney disease
Chronic kidney disease	585.2	ICD9	Chronic kidney disease
Chronic kidney disease	585.3	ICD9	Chronic kidney disease
Chronic kidney disease	585.4	ICD9	Chronic kidney disease
Chronic kidney disease	I12.0	ICD10	Hypertensive chronic kidney disease
Chronic kidney disease	I12.0	ICD10	Hypertensive chronic kidney disease with stage 5 chronic kidney disease or end stage renal disease

Chronic kidney disease	I12.9	ICD10	Hypertensive chronic kidney disease with stage 1 through stage 4 chronic kidney disease
Chronic kidney disease	N18.1	ICD10	Chronic kidney disease
Chronic kidney disease	N18.2	ICD10	Chronic kidney disease
Chronic kidney disease	N18.3	ICD10	Chronic kidney disease
Chronic kidney disease	N18.4	ICD10	Chronic kidney disease
Chronic obstructive pulmonary disease	491.2	ICD9	Obstructive chronic bronchitis
Chronic obstructive pulmonary disease	491.2	ICD9	Obstructive chronic bronchitis
Chronic obstructive pulmonary disease	491.21	ICD9	Obstructive chronic bronchitis with (acute) exacerbation
Chronic obstructive pulmonary disease	491.22	ICD9	Obstructive chronic bronchitis with acute bronchitis
Chronic obstructive pulmonary disease	492	ICD9	Emphysema
Chronic obstructive pulmonary disease	492	ICD9	Emphysematous bleb
Chronic obstructive pulmonary disease	492.8	ICD9	Other emphysema
Chronic obstructive pulmonary disease	496	ICD9	Chronic airway obstruction
Chronic obstructive pulmonary disease	J44.0	ICD10	Other chronic obstructive pulmonary disease
Chronic obstructive pulmonary disease	J44.0	ICD10	Chronic obstructive pulmonary disease with acute lower respiratory infection
Chronic obstructive pulmonary disease	J44.1	ICD10	Chronic obstructive pulmonary disease with (acute) exacerbation
Chronic obstructive pulmonary disease	J42.0	ICD10	Unspecified chronic bronchitis
Chronic obstructive pulmonary disease	J41.0	ICD10	Simple and mucopurulent chronic bronchitis
Chronic obstructive pulmonary disease	J41.0	ICD10	Simple chronic bronchitis

Chronic obstructive pulmonary disease	J41.1	ICD10	Mucopurulent chronic bronchitis
Chronic obstructive pulmonary disease	J41.8	ICD10	Mixed simple and mucopurulent chronic bronchitis
Chronic obstructive pulmonary disease	J43.0	ICD10	Emphysema
Chronic obstructive pulmonary disease	J43.0	ICD10	Unilateral pulmonary emphysema [MacLeod's syndrome]
Chronic obstructive pulmonary disease	J43.1	ICD10	Panlobular emphysema
Chronic obstructive pulmonary disease	J43.2	ICD10	Centrilobular emphysema
Chronic obstructive pulmonary disease	J43.8	ICD10	Other emphysema
Chronic obstructive pulmonary disease	J43.9	ICD10	Emphysema
Chronic obstructive pulmonary disease	J44.0	ICD10	Other chronic obstructive pulmonary disease
Chronic obstructive pulmonary disease	J44.0	ICD10	Chronic obstructive pulmonary disease with acute lower respiratory infection
Chronic obstructive pulmonary disease	J44.1	ICD10	Chronic obstructive pulmonary disease with (acute) exacerbation
Chronic obstructive pulmonary disease	J44.9	ICD10	Chronic obstructive pulmonary disease
Diabetes mellitus	249	ICD9	Secondary diabetes mellitus
Diabetes mellitus	249	ICD9	Secondary diabetes mellitus
Diabetes mellitus	249	ICD9	Secondary diabetes mellitus
Diabetes mellitus	249.01	ICD9	Secondary diabetes mellitus
Diabetes mellitus	249.1	ICD9	Secondary diabetes mellitus with ketoacidosis
Diabetes mellitus	249.1	ICD9	Secondary diabetes mellitus with ketoacidosis
Diabetes mellitus	249.11	ICD9	Secondary diabetes mellitus with ketoacidosis
Diabetes mellitus	249.2	ICD9	Secondary diabetes mellitus with hyperosmolarity
Diabetes mellitus	249.2	ICD9	Secondary diabetes mellitus with hyperosmolarity
Diabetes mellitus	249.21	ICD9	Secondary diabetes mellitus with hyperosmolarity

Diabetes mellitus	249.3	ICD9	Secondary diabetes mellitus with other coma
Diabetes mellitus	249.3	ICD9	Secondary diabetes mellitus with other coma
Diabetes mellitus	249.31	ICD9	Secondary diabetes mellitus with other coma
Diabetes mellitus	249.4	ICD9	Secondary diabetes mellitus with renal manifestations
Diabetes mellitus	249.4	ICD9	Secondary diabetes mellitus with renal manifestations
Diabetes mellitus	249.41	ICD9	Secondary diabetes mellitus with renal manifestations
Diabetes mellitus	249.5	ICD9	Secondary diabetes mellitus with ophthalmic manifestations
Diabetes mellitus	249.5	ICD9	Secondary diabetes mellitus with ophthalmic manifestations
Diabetes mellitus	249.51	ICD9	Secondary diabetes mellitus with ophthalmic manifestations
Diabetes mellitus	249.6	ICD9	Secondary diabetes mellitus with neurological manifestations
Diabetes mellitus	249.6	ICD9	Secondary diabetes mellitus with neurological manifestations
Diabetes mellitus	249.61	ICD9	Secondary diabetes mellitus with neurological manifestations
Diabetes mellitus	249.7	ICD9	Secondary diabetes mellitus with peripheral circulatory disorders
Diabetes mellitus	249.7	ICD9	Secondary diabetes mellitus with peripheral circulatory disorders
Diabetes mellitus	249.71	ICD9	Secondary diabetes mellitus with peripheral circulatory disorders
Diabetes mellitus	249.8	ICD9	Secondary diabetes mellitus with other specified manifestations
Diabetes mellitus	249.8	ICD9	Secondary diabetes mellitus with other specified manifestations
Diabetes mellitus	249.81	ICD9	Secondary diabetes mellitus with other specified manifestations
Diabetes mellitus	249.9	ICD9	Secondary diabetes mellitus with unspecified complication
Diabetes mellitus	249.9	ICD9	Secondary diabetes mellitus with unspecified complication

Diabetes mellitus	249.91	ICD9	Secondary diabetes mellitus with unspecified complication
Diabetes mellitus	250	ICD9	Diabetes mellitus
Diabetes mellitus	250	ICD9	Diabetes mellitus without mention of complication
Diabetes mellitus	250	ICD9	type II diabetes mellitus [non-insulin dependent type] [NIDDM type] [adult-onset type] or unspecified type
Diabetes mellitus	250.01	ICD9	type I diabetes mellitus [insulin dependent type] [IDDM] [juvenile type]
Diabetes mellitus	250.02	ICD9	type II diabetes mellitus [non-insulin dependent type] [NIDDM type] [adult-onset type] or unspecified type
Diabetes mellitus	250.03	ICD9	type I diabetes mellitus [juvenile type]
Diabetes mellitus	250.1	ICD9	Diabetes with ketoacidosis
Diabetes mellitus	250.1	ICD9	type II diabetes mellitus [non-insulin dependent type] [NIDDM type] [adult-onset type] or unspecified type
Diabetes mellitus	250.11	ICD9	type I diabetes mellitus [insulin dependent type] [IDDM] [juvenile type]
Diabetes mellitus	250.12	ICD9	type II diabetes mellitus [non-insulin dependent type] [NIDDM type] [adult-onset type] or unspecified type
Diabetes mellitus	250.13	ICD9	type I diabetes mellitus [juvenile type]
Diabetes mellitus	250.2	ICD9	Diabetes mellitus with hyperosmolarity
Diabetes mellitus	250.2	ICD9	Diabetes mellitus
Diabetes mellitus	250.21	ICD9	Diabetes mellitus
Diabetes mellitus	250.22	ICD9	Diabetes mellitus type II [non-insulin dependent type] [NIDDM type] [adult-onset type] or unspecified type with hyperosmolarity
Diabetes mellitus	250.23	ICD9	Diabetes mellitus
Diabetes mellitus	250.3	ICD9	Diabetes with other coma
Diabetes mellitus	250.3	ICD9	Diabetes mellitus
Diabetes mellitus	250.31	ICD9	Diabetes mellitus
Diabetes mellitus	250.32	ICD9	Diabetes mellitus with other coma
Diabetes mellitus	250.33	ICD9	Diabetes mellitus with other coma
Diabetes mellitus	250.4	ICD9	Diabetes with renal manifestations

Diabetes mellitus	250.4	ICD9	Diabetes mellitus type II [non-insulin dependent type] [NIDDM type] [adult-onset type] or unspecified type
Diabetes mellitus	250.41	ICD9	Diabetes mellitus type I [insulin dependent type] [IDDM] [juvenile type]
Diabetes mellitus	250.42	ICD9	Diabetes mellitus type II [non-insulin dependent type] [NIDDM type] [adult-onset type] or unspecified type
Diabetes mellitus	250.43	ICD9	Diabetes mellitus type I [juvenile type]
Diabetes mellitus	250.5	ICD9	Diabetes with ophthalmic manifestations
Diabetes mellitus	250.5	ICD9	Diabetes mellitus type II [non-insulin dependent type] [NIDDM type] [adult-onset type] or unspecified type
Diabetes mellitus	250.51	ICD9	Diabetes mellitus type I [insulin dependent type] [IDDM] [juvenile type]
Diabetes mellitus	250.52	ICD9	Diabetes mellitus type II [non-insulin dependent type] [NIDDM type] [adult-onset type] or unspecified type
Diabetes mellitus	250.53	ICD9	Diabetes mellitus type I [juvenile type]
Diabetes mellitus	250.6	ICD9	Diabetes with neurological manifestations
Diabetes mellitus	250.6	ICD9	Diabetes mellitus type II [non-insulin dependent type] [NIDDM type] [adult-onset type] or unspecified type
Diabetes mellitus	250.61	ICD9	Diabetes mellitus type I [insulin dependent type] [IDDM] [juvenile type]
Diabetes mellitus	250.62	ICD9	Diabetes mellitus type II [non-insulin dependent type] [NIDDM type] [adult-onset type] or unspecified type
Diabetes mellitus	250.63	ICD9	Diabetes mellitus type I [juvenile type]
Diabetes mellitus	250.7	ICD9	Diabetes with peripheral circulatory disorders
Diabetes mellitus	250.7	ICD9	Diabetes mellitus type II [non-insulin dependent type] [NIDDM type] [adult-onset type] or unspecified type
Diabetes mellitus	250.71	ICD9	Diabetes mellitus type I [insulin dependent type] [IDDM] [juvenile type]

Diabetes mellitus	250.72	ICD9	Diabetes mellitus type II [non-insulin dependent type] [NIDDM type] [adult-onset type] or unspecified type
Diabetes mellitus	250.73	ICD9	Diabetes mellitus type I [juvenile type]
Diabetes mellitus	250.8	ICD9	Diabetes with other specified manifestations
Diabetes mellitus	250.8	ICD9	Diabetes mellitus type II [non-insulin dependent type] [NIDDM type] [adult-onset type] or unspecified type
Diabetes mellitus	250.81	ICD9	Diabetes mellitus type I [insulin dependent type] [IDDM] [juvenile type]
Diabetes mellitus	250.82	ICD9	Diabetes mellitus type II [non-insulin dependent type] [NIDDM type] [adult-onset type] or unspecified type
Diabetes mellitus	250.83	ICD9	Diabetes mellitus type I [juvenile type]
Diabetes mellitus	250.9	ICD9	Diabetes with unspecified complication
Diabetes mellitus	250.9	ICD9	Diabetes mellitus type II [non-insulin dependent type] [NIDDM type] [adult-onset type] or unspecified type
Diabetes mellitus	250.91	ICD9	Diabetes mellitus type I [insulin dependent type] [IDDM] [juvenile type]
Diabetes mellitus	250.92	ICD9	Diabetes mellitus type II [non-insulin dependent type] [NIDDM type] [adult-onset type] or unspecified type
Diabetes mellitus	250.93	ICD9	Diabetes mellitus type I [insulin dependent type] [IDDM] [juvenile type]
Diabetes mellitus	357.2	ICD9	Polyneuropathy in diabetes
Diabetes mellitus	E08	ICD10	Diabetes mellitus due to underlying condition
Diabetes mellitus	E08.0	ICD10	Diabetes mellitus due to underlying condition with hyperosmolarity
Diabetes mellitus	E08.00	ICD10	Diabetes mellitus due to underlying condition with hyperosmolarity without nonketotic hyperglycemic-hyperosmolar coma (NKHHC)
Diabetes mellitus	E08.01	ICD10	Diabetes mellitus due to underlying condition with hyperosmolarity with coma
Diabetes mellitus	E08.1	ICD10	Diabetes mellitus due to underlying condition with ketoacidosis

Diabetes mellitus	E08.10	ICD10	Diabetes mellitus due to underlying condition with ketoacidosis without coma
Diabetes mellitus	E08.11	ICD10	Diabetes mellitus due to underlying condition with ketoacidosis with coma
Diabetes mellitus	E08.2	ICD10	Diabetes mellitus due to underlying condition with kidney complications
Diabetes mellitus	E08.21	ICD10	Diabetes mellitus due to underlying condition with diabetic nephropathy
Diabetes mellitus	E08.22	ICD10	Diabetes mellitus due to underlying condition with diabetic chronic kidney disease
Diabetes mellitus	E08.29	ICD10	Diabetes mellitus due to underlying condition with other diabetic kidney complication
Diabetes mellitus	E08.3	ICD10	Diabetes mellitus due to underlying condition with ophthalmic complications
Diabetes mellitus	E08.31	ICD10	Diabetes mellitus due to underlying condition with unspecified diabetic retinopathy
Diabetes mellitus	E08.311	ICD10	Diabetes mellitus due to underlying condition with unspecified diabetic retinopathy with macular edema
Diabetes mellitus	E08.319	ICD10	Diabetes mellitus due to underlying condition with unspecified diabetic retinopathy without macular edema
Diabetes mellitus	E08.32	ICD10	Diabetes mellitus due to underlying condition with mild nonproliferative diabetic retinopathy
Diabetes mellitus	E08.321	ICD10	Diabetes mellitus due to underlying condition with mild nonproliferative diabetic retinopathy with macular edema
Diabetes mellitus	E08.3211	ICD10	Diabetes with mild nonp rtnop with macular edema
Diabetes mellitus	E08.3212	ICD10	Diabetes with mild nonp rtnop with macular edema
Diabetes mellitus	E08.3213	ICD10	Diabetes with mild nonp rtnop with macular edema

Diabetes mellitus	E08.3219	ICD10	Diabetes with mild nonp rtnop with macular edema
Diabetes mellitus	E08.329	ICD10	Diabetes mellitus due to underlying condition with mild nonproliferative diabetic retinopathy without macular edema
Diabetes mellitus	E08.3291	ICD10	Diabetes with mild nonp rtnop without macular edema
Diabetes mellitus	E08.3292	ICD10	Diabetes mellitus due to underlying condition with mild nonproliferative diabetic retinopathy without macular edema
Diabetes mellitus	E08.3293	ICD10	Diabetes with mild nonp rtnop without macular edema
Diabetes mellitus	E08.3299	ICD10	Diabetes with mild nonp rtnop without macular edema
Diabetes mellitus	E08.33	ICD10	Diabetes mellitus due to underlying condition with moderate nonproliferative diabetic retinopathy
Diabetes mellitus	E08.331	ICD10	Diabetes mellitus due to underlying condition with moderate nonproliferative diabetic retinopathy with macular edema
Diabetes mellitus	E08.3311	ICD10	Diabetes with moderate nonp rtnop with macular edema
Diabetes mellitus	E08.3312	ICD10	Diabetes mellitus due to underlying condition with moderate nonproliferative diabetic retinopathy with macular edema
Diabetes mellitus	E08.3313	ICD10	Diabetes with moderate nonp rtnop with macular edema
Diabetes mellitus	E08.3319	ICD10	Diabetes with moderate nonp rtnop with macular edema
Diabetes mellitus	E08.339	ICD10	Diabetes mellitus due to underlying condition with moderate nonproliferative diabetic retinopathy without macular edema

Diabetes mellitus	E08.3391	ICD10	Diabetes mellitus due to underlying condition with moderate nonproliferative diabetic retinopathy without macular edema
Diabetes mellitus	E08.3392	ICD10	Diabetes mellitus due to underlying condition with moderate nonproliferative diabetic retinopathy without macular edema
Diabetes mellitus	E08.3393	ICD10	Diabetes with moderate nonp rtnop without macular edema
Diabetes mellitus	E08.3399	ICD10	Diabetes mellitus due to underlying condition with moderate nonproliferative diabetic retinopathy without macular edema
Diabetes mellitus	E08.34	ICD10	Diabetes mellitus due to underlying condition with severe nonproliferative diabetic retinopathy
Diabetes mellitus	E08.341	ICD10	Diabetes mellitus due to underlying condition with severe nonproliferative diabetic retinopathy with macular edema
Diabetes mellitus	E08.3411	ICD10	Diabetes with severe nonp rtnop with macular edema
Diabetes mellitus	E08.3412	ICD10	Diabetes with severe nonp rtnop with macular edema
Diabetes mellitus	E08.3413	ICD10	Diabetes with severe nonp rtnop with macular edema
Diabetes mellitus	E08.3419	ICD10	Diabetes with severe nonp rtnop with macular edema
Diabetes mellitus	E08.349	ICD10	Diabetes mellitus due to underlying condition with severe nonproliferative diabetic retinopathy without macular edema
Diabetes mellitus	E08.3491	ICD10	Diabetes with severe nonp rtnop without macular edema
Diabetes mellitus	E08.3492	ICD10	Diabetes mellitus due to underlying condition with severe nonproliferative diabetic retinopathy without macular edema

Diabetes mellitus	E08.3493	ICD10	Diabetes with severe nonp rtnop without macular edema
Diabetes mellitus	E08.3499	ICD10	Diabetes with severe nonp rtnop without macular edema
Diabetes mellitus	E08.35	ICD10	Diabetes mellitus due to underlying condition with proliferative diabetic retinopathy
Diabetes mellitus	E08.351	ICD10	Diabetes mellitus due to underlying condition with proliferative diabetic retinopathy with macular edema
Diabetes mellitus	E08.3511	ICD10	Diabetes mellitus due to underlying condition with proliferative diabetic retinopathy with macular edema
Diabetes mellitus	E08.3512	ICD10	Diabetes mellitus due to underlying condition with proliferative diabetic retinopathy with macular edema
Diabetes mellitus	E08.3513	ICD10	Diabetes with prolif diabetic rtnop with macular edema
Diabetes mellitus	E08.3519	ICD10	Diabetes with prolif diabetic rtnop with macular edema
Diabetes mellitus	E08.352	ICD10	Diabetes mellitus due to underlying condition with proliferative diabetic retinopathy with traction retinal detachment involving the macula
Diabetes mellitus	E08.3521	ICD10	Diabetes mellitus due to underlying condition with proliferative diabetic retinopathy with traction retinal detachment involving the macula
Diabetes mellitus	E08.3522	ICD10	Diabetes mellitus due to underlying condition with proliferative diabetic retinopathy with traction retinal detachment involving the macula
Diabetes mellitus	E08.3523	ICD10	Diabetes mellitus due to underlying condition with proliferative diabetic retinopathy with traction retinal detachment involving the macula
Diabetes mellitus	E08.3529	ICD10	Diabetes mellitus due to underlying condition with proliferative diabetic retinopathy with traction retinal detachment involving the macula

Diabetes mellitus	E08.353	ICD10	Diabetes mellitus due to underlying condition with proliferative diabetic retinopathy with traction retinal detachment not involving the macula
Diabetes mellitus	E08.3531	ICD10	Diabetes mellitus due to underlying condition with proliferative diabetic retinopathy with traction retinal detachment not involving the macula
Diabetes mellitus	E08.3532	ICD10	Diabetes mellitus due to underlying condition with proliferative diabetic retinopathy with traction retinal detachment not involving the macula
Diabetes mellitus	E08.3533	ICD10	Diabetes mellitus due to underlying condition with proliferative diabetic retinopathy with traction retinal detachment not involving the macula
Diabetes mellitus	E08.3539	ICD10	Diabetes mellitus due to underlying condition with proliferative diabetic retinopathy with traction retinal detachment not involving the macula
Diabetes mellitus	E08.354	ICD10	Diabetes mellitus due to underlying condition with proliferative diabetic retinopathy with combined traction retinal detachment and rhegmatogenous retinal detachment
Diabetes mellitus	E08.3541	ICD10	Diabetes with proliferative diabetic retinopathy with combined detachment
Diabetes mellitus	E08.3542	ICD10	Diabetes mellitus due to underlying condition with proliferative diabetic retinopathy with combined traction retinal detachment and rhegmatogenous retinal detachment
Diabetes mellitus	E08.3543	ICD10	Diabetes with proliferative diabetic retinopathy with combined detachment
Diabetes mellitus	E08.3549	ICD10	Diabetes with proliferative diabetic retinopathy with combined detachment
Diabetes mellitus	E08.355	ICD10	Diabetes mellitus due to underlying condition with stable proliferative diabetic retinopathy

Diabetes mellitus	E08.3551	ICD10	Diabetes with stable proliferative diabetic retinopathy
Diabetes mellitus	E08.3552	ICD10	Diabetes with stable proliferative diabetic retinopathy
Diabetes mellitus	E08.3553	ICD10	Diabetes with stable proliferative diabetic retinopathy
Diabetes mellitus	E08.3559	ICD10	Diabetes with stable proliferative diabetic retinopathy
Diabetes mellitus	E08.359	ICD10	Diabetes mellitus due to underlying condition with proliferative diabetic retinopathy without macular edema
Diabetes mellitus	E08.3591	ICD10	Diabetes mellitus due to underlying condition with proliferative diabetic retinopathy without macular edema
Diabetes mellitus	E08.3592	ICD10	Diabetes mellitus due to underlying condition with proliferative diabetic retinopathy without macular edema
Diabetes mellitus	E08.3593	ICD10	Diabetes mellitus due to underlying condition with proliferative diabetic retinopathy without macular edema
Diabetes mellitus	E08.3599	ICD10	Diabetes mellitus due to underlying condition with proliferative diabetic retinopathy without macular edema
Diabetes mellitus	E08.36	ICD10	Diabetes mellitus due to underlying condition with diabetic cataract
Diabetes mellitus	E08.37	ICD10	Diabetes mellitus due to underlying condition with diabetic macular edema
Diabetes mellitus	E08.37X1	ICD10	Diabetes mellitus due to underlying condition with diabetic macular edema
Diabetes mellitus	E08.37X2	ICD10	Diabetes mellitus due to underlying condition with diabetic macular edema
Diabetes mellitus	E08.37X3	ICD10	Diabetes with diabetic macular edema
Diabetes mellitus	E08.37X9	ICD10	Diabetes mellitus due to underlying condition with diabetic macular edema
Diabetes mellitus	E08.39	ICD10	Diabetes mellitus due to underlying condition with other diabetic ophthalmic complication
Diabetes mellitus	E08.4	ICD10	Diabetes mellitus due to underlying condition with neurological complications

Diabetes mellitus	E08.40	ICD10	Diabetes mellitus due to underlying condition with diabetic neuropathy
Diabetes mellitus	E08.41	ICD10	Diabetes mellitus due to underlying condition with diabetic mononeuropathy
Diabetes mellitus	E08.42	ICD10	Diabetes mellitus due to underlying condition with diabetic polyneuropathy
Diabetes mellitus	E08.43	ICD10	Diabetes mellitus due to underlying condition with diabetic autonomic (poly)neuropathy
Diabetes mellitus	E08.44	ICD10	Diabetes mellitus due to underlying condition with diabetic amyotrophy
Diabetes mellitus	E08.49	ICD10	Diabetes mellitus due to underlying condition with other diabetic neurological complication
Diabetes mellitus	E08.5	ICD10	Diabetes mellitus due to underlying condition with circulatory complications
Diabetes mellitus	E08.51	ICD10	Diabetes mellitus due to underlying condition with diabetic peripheral angiopathy without gangrene
Diabetes mellitus	E08.52	ICD10	Diabetes mellitus due to underlying condition with diabetic peripheral angiopathy with gangrene
Diabetes mellitus	E08.59	ICD10	Diabetes mellitus due to underlying condition with other circulatory complications
Diabetes mellitus	E08.6	ICD10	Diabetes mellitus due to underlying condition with other specified complications
Diabetes mellitus	E08.61	ICD10	Diabetes mellitus due to underlying condition with diabetic arthropathy
Diabetes mellitus	E08.610	ICD10	Diabetes mellitus due to underlying condition with diabetic neuropathic arthropathy
Diabetes mellitus	E08.618	ICD10	Diabetes mellitus due to underlying condition with other diabetic arthropathy
Diabetes mellitus	E08.62	ICD10	Diabetes mellitus due to underlying condition with skin complications
Diabetes mellitus	E08.620	ICD10	Diabetes mellitus due to underlying condition with diabetic necrobiosis lipoidica

Diabetes mellitus	E08.621	ICD10	Diabetes mellitus due to underlying condition with foot ulcer
Diabetes mellitus	E08.622	ICD10	Diabetes mellitus due to underlying condition with other skin ulcer
Diabetes mellitus	E08.628	ICD10	Diabetes mellitus due to underlying condition with other skin complications
Diabetes mellitus	E08.63	ICD10	Diabetes mellitus due to underlying condition with oral complications
Diabetes mellitus	E08.630	ICD10	Diabetes mellitus due to underlying condition with periodontal disease
Diabetes mellitus	E08.638	ICD10	Diabetes mellitus due to underlying condition with other oral complications
Diabetes mellitus	E08.64	ICD10	Diabetes mellitus due to underlying condition with hypoglycemia
Diabetes mellitus	E08.641	ICD10	Diabetes mellitus due to underlying condition with hypoglycemia with coma
Diabetes mellitus	E08.649	ICD10	Diabetes mellitus due to underlying condition with hypoglycemia without coma
Diabetes mellitus	E08.65	ICD10	Diabetes mellitus due to underlying condition with hyperglycemia
Diabetes mellitus	E08.69	ICD10	Diabetes mellitus due to underlying condition with other specified complication
Diabetes mellitus	E08.8	ICD10	Diabetes mellitus due to underlying condition with unspecified complications
Diabetes mellitus	E08.9	ICD10	Diabetes mellitus due to underlying condition without complications
Diabetes mellitus	E09	ICD10	Drug or chemical induced diabetes mellitus
Diabetes mellitus	E09.0	ICD10	Drug or chemical induced diabetes mellitus with hyperosmolarity
Diabetes mellitus	E09.00	ICD10	Drug or chemical induced diabetes mellitus with hyperosmolarity without nonketotic hyperglycemic-hyperosmolar coma (NKHHC)
Diabetes mellitus	E09.01	ICD10	Drug or chemical induced diabetes mellitus with hyperosmolarity with coma
Diabetes mellitus	E09.1	ICD10	Drug or chemical induced diabetes mellitus with ketoacidosis

Diabetes mellitus	E09.10	ICD10	Drug or chemical induced diabetes mellitus with ketoacidosis without coma
Diabetes mellitus	E09.11	ICD10	Drug or chemical induced diabetes mellitus with ketoacidosis with coma
Diabetes mellitus	E09.2	ICD10	Drug or chemical induced diabetes mellitus with kidney complications
Diabetes mellitus	E09.21	ICD10	Drug or chemical induced diabetes mellitus with diabetic nephropathy
Diabetes mellitus	E09.22	ICD10	Drug or chemical induced diabetes mellitus with diabetic chronic kidney disease
Diabetes mellitus	E09.29	ICD10	Drug or chemical induced diabetes mellitus with other diabetic kidney complication
Diabetes mellitus	E09.3	ICD10	Drug or chemical induced diabetes mellitus with ophthalmic complications
Diabetes mellitus	E09.31	ICD10	Drug or chemical induced diabetes mellitus with unspecified diabetic retinopathy
Diabetes mellitus	E09.311	ICD10	Drug or chemical induced diabetes mellitus with unspecified diabetic retinopathy with macular edema
Diabetes mellitus	E09.319	ICD10	Drug or chemical induced diabetes mellitus with unspecified diabetic retinopathy without macular edema
Diabetes mellitus	E09.32	ICD10	Drug or chemical induced diabetes mellitus with mild nonproliferative diabetic retinopathy
Diabetes mellitus	E09.321	ICD10	Drug or chemical induced diabetes mellitus with mild nonproliferative diabetic retinopathy with macular edema
Diabetes mellitus	E09.3211	ICD10	Drug or chemical induced diabetes mellitus with mild nonproliferative diabetic retinopathy with macular edema
Diabetes mellitus	E09.3212	ICD10	Drug/chem diab with mild nonp rtnop with mclr edema
Diabetes mellitus	E09.3213	ICD10	Drug/chem diab with mild nonp rtnop with macular edema

Diabetes mellitus	E09.3219	ICD10	Drug/chem diab with mild nonp rtnop with macular edema
Diabetes mellitus	E09.329	ICD10	Drug or chemical induced diabetes mellitus with mild nonproliferative diabetic retinopathy without macular edema
Diabetes mellitus	E09.3291	ICD10	Drug/chem diab with mild nonp rtnop w/o mclr edema
Diabetes mellitus	E09.3292	ICD10	Drug/chem diab with mild nonp rtnop w/o mclr edema
Diabetes mellitus	E09.3293	ICD10	Drug/chem diab with mild nonp rtnop without mclr edema
Diabetes mellitus	E09.3299	ICD10	Drug/chem diab with mild nonp rtnop without mclr edema
Diabetes mellitus	E09.33	ICD10	Drug or chemical induced diabetes mellitus with moderate nonproliferative diabetic retinopathy
Diabetes mellitus	E09.331	ICD10	Drug or chemical induced diabetes mellitus with moderate nonproliferative diabetic retinopathy with macular edema
Diabetes mellitus	E09.3311	ICD10	Drug/chem diab with mod nonp rtnop with macular edema
Diabetes mellitus	E09.3312	ICD10	Drug/chem diab with mod nonp rtnop with macular edema
Diabetes mellitus	E09.3313	ICD10	Drug/chem diab with mod nonp rtnop with macular edema
Diabetes mellitus	E09.3319	ICD10	Drug/chem diab with mod nonp rtnop with macular edema
Diabetes mellitus	E09.339	ICD10	Drug or chemical induced diabetes mellitus with moderate nonproliferative diabetic retinopathy without macular edema
Diabetes mellitus	E09.3391	ICD10	Drug/chem diab with mod nonp rtnop without mclr edema
Diabetes mellitus	E09.3392	ICD10	Drug/chem diab with mod nonp rtnop without mclr edema
Diabetes mellitus	E09.3393	ICD10	Drug/chem diab with mod nonp rtnop without macular edema

Diabetes mellitus	E09.3399	ICD10	Drug/chem diab with mod nonp rtnop without mclr edema
Diabetes mellitus	E09.34	ICD10	Drug or chemical induced diabetes mellitus with severe nonproliferative diabetic retinopathy
Diabetes mellitus	E09.341	ICD10	Drug or chemical induced diabetes mellitus with severe nonproliferative diabetic retinopathy with macular edema
Diabetes mellitus	E09.3411	ICD10	Drug/chem diab with severe nonp rtnop with mclr edema
Diabetes mellitus	E09.3412	ICD10	Drug/chem diab with severe nonp rtnop with mclr edema
Diabetes mellitus	E09.3413	ICD10	Drug/chem diab with severe nonp rtnop with macular edema
Diabetes mellitus	E09.3419	ICD10	Drug/chem diab with severe nonp rtnop with mclr edema
Diabetes mellitus	E09.349	ICD10	Drug or chemical induced diabetes mellitus with severe nonproliferative diabetic retinopathy without macular edema
Diabetes mellitus	E09.3491	ICD10	Drug/chem diab with severe nonp rtnop w/o mclr edema
Diabetes mellitus	E09.3492	ICD10	Drug/chem diab with severe nonp rtnop w/o mclr edema
Diabetes mellitus	E09.3493	ICD10	Drug/chem diab with severe nonp rtnop without mclr edema
Diabetes mellitus	E09.3499	ICD10	Drug/chem diab with severe nonp rtnop w/o mclr edema
Diabetes mellitus	E09.35	ICD10	Drug or chemical induced diabetes mellitus with proliferative diabetic retinopathy
Diabetes mellitus	E09.351	ICD10	Drug or chemical induced diabetes mellitus with proliferative diabetic retinopathy with macular edema
Diabetes mellitus	E09.3511	ICD10	Drug/chem diab with prolif diab rtnop with mclr edema
Diabetes mellitus	E09.3512	ICD10	Drug/chem diab with prolif diab rtnop with mclr edema

Diabetes mellitus	E09.3513	ICD10	Drug/chem diab with prolif diab rtnop with macular edema
Diabetes mellitus	E09.3519	ICD10	Drug/chem diab with prolif diab rtnop with mclr edema
Diabetes mellitus	E09.352	ICD10	Drug or chemical induced diabetes mellitus with proliferative diabetic retinopathy with traction retinal detachment involving the macula
Diabetes mellitus	E09.3521	ICD10	Drug/chem diab w prolif diab rtnop w trctn dtch macula
Diabetes mellitus	E09.3522	ICD10	Drug/chem diab w prolif diab rtnop w trctn dtch macula
Diabetes mellitus	E09.3523	ICD10	Drug/chem diab w prolif diab rtnop w trctn dtch macula
Diabetes mellitus	E09.3529	ICD10	Drug/chem diab w prolif diab rtnop w trctn dtch macula
Diabetes mellitus	E09.353	ICD10	Drug or chemical induced diabetes mellitus with proliferative diabetic retinopathy with traction retinal detachment not involving the macula
Diabetes mellitus	E09.3531	ICD10	Drug/chem diab w prolif diab rtnop w trctn dtch n-mcla
Diabetes mellitus	E09.3532	ICD10	Drug/chem diab w prolif diab rtnop w trctn dtch n-mcla
Diabetes mellitus	E09.3533	ICD10	Drug/chem diab w prolif diab rtnop w trctn dtch n-mcla
Diabetes mellitus	E09.3539	ICD10	Drug/chem diab w prolif diab rtnop w trctn dtch n-mcla
Diabetes mellitus	E09.354	ICD10	Drug or chemical induced diabetes mellitus with proliferative diabetic retinopathy with combined traction retinal detachment and rhegmatogenous retinal detachment
Diabetes mellitus	E09.3541	ICD10	Drug/chem diab w prolif diab rtnop with comb detach
Diabetes mellitus	E09.3542	ICD10	Drug/chem diab w prolif diab rtnop with comb detach
Diabetes mellitus	E09.3543	ICD10	Drug/chem diab with prolif diab rtnop with comb detach

Diabetes mellitus	E09.3549	ICD10	Drug/chem diab with prolif diab rtnop with comb detach
Diabetes mellitus	E09.355	ICD10	Drug or chemical induced diabetes mellitus with stable proliferative diabetic retinopathy
Diabetes mellitus	E09.3551	ICD10	Drug/chem diabetes with stable prolif diabetic rtnop
Diabetes mellitus	E09.3552	ICD10	Drug/chem diab with stable prolif diabetic rtnop
Diabetes mellitus	E09.3553	ICD10	Drug/chem diabetes with stable prolif diabetic rtnop
Diabetes mellitus	E09.3559	ICD10	Drug/chem diabetes with stable prolif diabetic rtnop
Diabetes mellitus	E09.359	ICD10	Drug or chemical induced diabetes mellitus with proliferative diabetic retinopathy without macular edema
Diabetes mellitus	E09.3591	ICD10	Drug/chem diab with prolif diab rtnop w/o mclr edema
Diabetes mellitus	E09.3592	ICD10	Drug/chem diab with prolif diab rtnop w/o mclr edema
Diabetes mellitus	E09.3593	ICD10	Drug/chem diab with prolif diab rtnop without mclr edema
Diabetes mellitus	E09.3599	ICD10	Drug/chem diab with prolif diab rtnop w/o mclr edema
Diabetes mellitus	E09.36	ICD10	Drug or chemical induced diabetes mellitus with diabetic cataract
Diabetes mellitus	E09.37	ICD10	Drug or chemical induced diabetes mellitus with diabetic macular edema
Diabetes mellitus	E09.37X1	ICD10	Drug/chem diab w diab mclr edma
Diabetes mellitus	E09.37X2	ICD10	Drug/chem diab w diab mclr edma
Diabetes mellitus	E09.37X3	ICD10	Drug/chem diab with diab mclr edema
Diabetes mellitus	E09.37X9	ICD10	Drug/chem diab with diab mclr edma
Diabetes mellitus	E09.39	ICD10	Drug/chem diabetes w oth diabetic ophthalmic complication
Diabetes mellitus	E09.4	ICD10	Drug or chemical induced diabetes mellitus with neurological complications
Diabetes mellitus	E09.40	ICD10	Drug or chemical induced diabetes mellitus with neurological complications with diabetic neuropathy

Diabetes mellitus	E09.41	ICD10	Drug/chem diabetes w neuro comp w diabetic mononeuropathy
Diabetes mellitus	E09.42	ICD10	Drug or chemical induced diabetes mellitus with neurological complications with diabetic polyneuropathy
Diabetes mellitus	E09.43	ICD10	Drug or chemical induced diabetes mellitus with neurological complications with diabetic autonomic (poly)neuropathy
Diabetes mellitus	E09.44	ICD10	Drug/chem diabetes w neurological comp w diabetic amyotrophy
Diabetes mellitus	E09.49	ICD10	Drug/chem diabetes w neuro comp w oth diabetic neuro comp
Diabetes mellitus	E09.5	ICD10	Drug or chemical induced diabetes mellitus with circulatory complications
Diabetes mellitus	E09.51	ICD10	Drug or chemical induced diabetes mellitus with diabetic peripheral angiopathy without gangrene
Diabetes mellitus	E09.52	ICD10	Drug/chem diabetes w diabetic prph angiopath w gangrene
Diabetes mellitus	E09.59	ICD10	Drug/chem diabetes mellitus w oth circulatory complications
Diabetes mellitus	E09.6	ICD10	Drug or chemical induced diabetes mellitus with other specified complications
Diabetes mellitus	E09.61	ICD10	Drug or chemical induced diabetes mellitus with diabetic arthropathy
Diabetes mellitus	E09.610	ICD10	Drug/chem diabetes w diabetic neuropathic arthropathy
Diabetes mellitus	E09.618	ICD10	Drug/chem diabetes mellitus w oth diabetic arthropathy
Diabetes mellitus	E09.62	ICD10	Drug or chemical induced diabetes mellitus with skin complications
Diabetes mellitus	E09.620	ICD10	Drug/chem diabetes mellitus w diabetic dermatitis
Diabetes mellitus	E09.621	ICD10	Drug or chemical induced diabetes mellitus with foot ulcer
Diabetes mellitus	E09.622	ICD10	Drug or chemical induced diabetes mellitus with other skin ulcer

Diabetes mellitus	E09.628	ICD10	Drug/chem diabetes mellitus w oth skin complications
Diabetes mellitus	E09.63	ICD10	Drug or chemical induced diabetes mellitus with oral complications
Diabetes mellitus	E09.630	ICD10	Drug/chem diabetes mellitus w periodontal disease
Diabetes mellitus	E09.638	ICD10	Drug/chem diabetes mellitus w oth oral complications
Diabetes mellitus	E09.64	ICD10	Drug or chemical induced diabetes mellitus with hypoglycemia
Diabetes mellitus	E09.641	ICD10	Drug/chem diabetes mellitus w hypoglycemia w coma
Diabetes mellitus	E09.649	ICD10	Drug or chemical induced diabetes mellitus with hypoglycemia without coma
Diabetes mellitus	E09.65	ICD10	Drug or chemical induced diabetes mellitus with hyperglycemia
Diabetes mellitus	E09.69	ICD10	Drug or chemical induced diabetes mellitus with other specified complication
Diabetes mellitus	E09.8	ICD10	Drug or chemical induced diabetes mellitus with unspecified complications
Diabetes mellitus	E09.9	ICD10	Drug or chemical induced diabetes mellitus without complications
Diabetes mellitus	E13.0	ICD10	Other specified diabetes mellitus
Diabetes mellitus	E13.0	ICD10	Other specified diabetes mellitus with hyperosmolarity
Diabetes mellitus	E13.00	ICD10	Other specified diabetes mellitus with hyperosmolarity without nonketotic hyperglycemic-hyperosmolar coma (NKHHC)
Diabetes mellitus	E13.01	ICD10	Other specified diabetes mellitus with hyperosmolarity with coma
Diabetes mellitus	E13.1	ICD10	Other specified diabetes mellitus with ketoacidosis
Diabetes mellitus	E13.10	ICD10	Other specified diabetes mellitus with ketoacidosis without coma
Diabetes mellitus	E13.11	ICD10	Other specified diabetes mellitus with ketoacidosis with coma

Diabetes mellitus	E13.2	ICD10	Other specified diabetes mellitus with kidney complications
Diabetes mellitus	E13.21	ICD10	Other specified diabetes mellitus with diabetic nephropathy
Diabetes mellitus	E13.22	ICD10	Other specified diabetes mellitus with diabetic chronic kidney disease
Diabetes mellitus	E13.29	ICD10	Other specified diabetes mellitus with other diabetic kidney complication
Diabetes mellitus	E13.3	ICD10	Other specified diabetes mellitus with ophthalmic complications
Diabetes mellitus	E13.36	ICD10	Other specified diabetes mellitus with diabetic cataract
Diabetes mellitus	E13.37	ICD10	Other specified diabetes mellitus with diabetic macular edema
Diabetes mellitus	E13.37X1	ICD10	Other specified diabetes mellitus with diabetic macular edema
Diabetes mellitus	E13.37X2	ICD10	Other specified diabetes mellitus with diabetic macular edema
Diabetes mellitus	E13.37X3	ICD10	Other specified diabetes mellitus with diabetic macular edema
Diabetes mellitus	E13.37X9	ICD10	Other specified diabetes mellitus with diabetic macular edema
Diabetes mellitus	E13.39	ICD10	Other specified diabetes mellitus with other diabetic ophthalmic complication
Diabetes mellitus	E13.4	ICD10	Other specified diabetes mellitus with neurological complications
Diabetes mellitus	E13.40	ICD10	Other specified diabetes mellitus with diabetic neuropathy
Diabetes mellitus	E13.41	ICD10	Other specified diabetes mellitus with diabetic mononeuropathy
Diabetes mellitus	E13.42	ICD10	Other specified diabetes mellitus with diabetic polyneuropathy
Diabetes mellitus	E13.43	ICD10	Other specified diabetes mellitus with diabetic autonomic (poly)neuropathy
Diabetes mellitus	E13.44	ICD10	Other specified diabetes mellitus with diabetic amyotrophy
Diabetes mellitus	E13.49	ICD10	Other specified diabetes mellitus with other diabetic neurological complication
Diabetes mellitus	E13.5	ICD10	Other specified diabetes mellitus with circulatory complications

Diabetes mellitus	E13.51	ICD10	Other specified diabetes mellitus with diabetic peripheral angiopathy without gangrene
Diabetes mellitus	E13.52	ICD10	Other specified diabetes mellitus with diabetic peripheral angiopathy with gangrene
Diabetes mellitus	E13.59	ICD10	Other specified diabetes mellitus with other circulatory complications
Diabetes mellitus	E13.6	ICD10	Other specified diabetes mellitus with other specified complications
Diabetes mellitus	E13.61	ICD10	Other specified diabetes mellitus with diabetic arthropathy
Diabetes mellitus	E13.610	ICD10	Other specified diabetes mellitus with diabetic neuropathic arthropathy
Diabetes mellitus	E13.618	ICD10	Other specified diabetes mellitus with other diabetic arthropathy
Diabetes mellitus	E13.62	ICD10	Other specified diabetes mellitus with skin complications
Diabetes mellitus	E13.620	ICD10	Other specified diabetes mellitus with diabetic necrobiosis lipoidica
Diabetes mellitus	E13.621	ICD10	Other specified diabetes mellitus with foot ulcer
Diabetes mellitus	E13.622	ICD10	Other specified diabetes mellitus with other skin ulcer
Diabetes mellitus	E13.628	ICD10	Other specified diabetes mellitus with other skin complications
Diabetes mellitus	E13.63	ICD10	Other specified diabetes mellitus with oral complications
Diabetes mellitus	E13.630	ICD10	Other specified diabetes mellitus with periodontal disease
Diabetes mellitus	E13.638	ICD10	Other specified diabetes mellitus with other oral complications
Diabetes mellitus	E13.64	ICD10	Other specified diabetes mellitus with hypoglycemia
Diabetes mellitus	E13.641	ICD10	Other specified diabetes mellitus with hypoglycemia with coma
Diabetes mellitus	E13.649	ICD10	Other specified diabetes mellitus with hypoglycemia without coma
Diabetes mellitus	E13.65	ICD10	Other specified diabetes mellitus with hyperglycemia

Diabetes mellitus	E13.69	ICD10	Other specified diabetes mellitus with other specified complication
Diabetes mellitus	E13.8	ICD10	Other specified diabetes mellitus with unspecified complications
Diabetes mellitus	E13.9	ICD10	Other specified diabetes mellitus without complications
Heart failure	428	ICD9	Heart failure
Heart failure	428	ICD9	Congestive heart failure (CHF) NOS
Heart failure	428	ICD9	Congestive heart failure (CHF) NOS **
Heart failure	428.1	ICD9	Left heart failure
Heart failure	428.2	ICD9	Systolic heart failure
Heart failure	428.2	ICD9	Systolic heart failure
Heart failure	428.21	ICD9	Systolic heart failure
Heart failure	428.22	ICD9	Systolic heart failure
Heart failure	428.23	ICD9	Systolic heart failure
Heart failure	428.3	ICD9	Diastolic heart failure
Heart failure	428.3	ICD9	Diastolic heart failure
Heart failure	428.31	ICD9	Diastolic heart failure
Heart failure	428.32	ICD9	Diastolic heart failure
Heart failure	428.33	ICD9	Diastolic heart failure
Heart failure	428.4	ICD9	Combined systolic and diastolic heart failure
Heart failure	428.4	ICD9	Combined systolic and diastolic heart failure
Heart failure	428.41	ICD9	Combined systolic and diastolic heart failure
Heart failure	428.42	ICD9	Combined systolic and diastolic heart failure
Heart failure	428.43	ICD9	Combined systolic and diastolic heart failure
Heart failure	428.9	ICD9	Heart failure unspecified
Heart failure	I50	ICD10	Heart failure
Heart failure	I50.1	ICD10	Left ventricular failure
Heart failure	I50.2	ICD10	Systolic (congestive) heart failure
Heart failure	I50.20	ICD10	Unspecified systolic (congestive) heart failure
Heart failure	I50.21	ICD10	Acute systolic (congestive) heart failure
Heart failure	I50.22	ICD10	Chronic systolic (congestive) heart failure
Heart failure	I50.23	ICD10	Acute on chronic systolic (congestive) heart failure

Heart failure	I50.3	ICD10	Diastolic (congestive) heart failure
Heart failure	I50.30	ICD10	Unspecified diastolic (congestive) heart failure
Heart failure	I50.31	ICD10	Acute diastolic (congestive) heart failure
Heart failure	I50.32	ICD10	Chronic diastolic (congestive) heart failure
Heart failure	I50.33	ICD10	Acute on chronic diastolic (congestive) heart failure
Heart failure	I50.4	ICD10	Combined systolic (congestive) and diastolic (congestive) heart failure
Heart failure	I50.40	ICD10	Unspecified combined systolic (congestive) and diastolic (congestive) heart failure
Heart failure	I50.41	ICD10	Acute combined systolic (congestive) and diastolic (congestive) heart failure
Heart failure	I50.42	ICD10	Chronic combined systolic (congestive) and diastolic (congestive) heart failure
Heart failure	I50.43	ICD10	Acute on chronic combined systolic (congestive) and diastolic (congestive) heart failure
Heart failure	I50.8	ICD10	Other heart failure
Heart failure	I50.81	ICD10	Right heart failure
Heart failure	I50.810	ICD10	Right ventricular failure NOS
Heart failure	I50.811	ICD10	Acute right heart failure
Heart failure	I50.812	ICD10	Chronic right heart failure
Heart failure	I50.813	ICD10	Acute on chronic right heart failure
Heart failure	I50.814	ICD10	Right ventricular failure secondary to left ventricular failure
Heart failure	I50.82	ICD10	Biventricular heart failure
Heart failure	I50.83	ICD10	High output heart failure
Heart failure	I50.84	ICD10	Stage D heart failure
Heart failure	I50.89	ICD10	Other heart failure
Heart failure	I50.9	ICD10	Heart failure
Hypertension	401	ICD9	Essential hypertension
Hypertension	401.1	ICD9	Benign essential hypertension
Hypertension	401.9	ICD9	Hypertension NOS
Hypertension	459.3	ICD9	Chronic venous hypertension (idiopathic)
Hypertension	459.3	ICD9	Chronic venous hypertension without complications
Hypertension	459.31	ICD9	Chronic venous hypertension with ulcer

Hypertension	459.32	ICD9	Chronic venous hypertension with inflammation
Hypertension	459.33	ICD9	Chronic venous hypertension with ulcer and inflammation
Hypertension	459.39	ICD9	Chronic venous hypertension with other complication
Hypertension	642	ICD9	Hypertension complicating pregnancy
Hypertension	642.04	ICD9	Benign essential hypertension
Hypertension	642.1	ICD9	Hypertension secondary to renal disease
Hypertension	642.1	ICD9	Hypertension secondary to renal disease
Hypertension	642.11	ICD9	Hypertension secondary to renal disease
Hypertension	642.12	ICD9	Hypertension secondary to renal disease
Hypertension	642.13	ICD9	Hypertension secondary to renal disease
Hypertension	642.14	ICD9	Hypertension secondary to renal disease
Hypertension	642.2	ICD9	Other pre-existing hypertension complicating pregnancy
Hypertension	642.2	ICD9	Other pre-existing hypertension complicating pregnancy
Hypertension	642.21	ICD9	Other pre-existing hypertension
Hypertension	642.22	ICD9	Other pre-existing hypertension
Hypertension	642.23	ICD9	Other pre-existing hypertension
Hypertension	642.24	ICD9	Other pre-existing hypertension
Hypertension	642.9	ICD9	Unspecified hypertension complicating pregnancy
Hypertension	642.9	ICD9	Unspecified hypertension complicating pregnancy
Hypertension	642.91	ICD9	Unspecified hypertension
Hypertension	642.92	ICD9	Unspecified hypertension
Hypertension	642.93	ICD9	Unspecified antepartum hypertension
Hypertension	642.94	ICD9	Unspecified postpartum hypertension
Hypertension	997.91	ICD9	Hypertension
Hypertension	I10	ICD10	Essential (primary) hypertension
Hypertension	I27.0	ICD10	Primary pulmonary hypertension
Hypertension	I87.3	ICD10	Chronic venous hypertension (idiopathic)
Hypertension	I87.30	ICD10	Chronic venous hypertension (idiopathic) without complications
Hypertension	I87.301	ICD10	Chronic venous hypertension (idiopathic) without complications of right lower extremity

Hypertension	I87.302	ICD10	Chronic venous hypertension (idiopathic) without complications of left lower extremity
Hypertension	I87.303	ICD10	Chronic venous hypertension (idiopathic) without complications of bilateral lower extremity
Hypertension	I87.309	ICD10	Chronic venous hypertension (idiopathic) without complications of unspecified lower extremity
Hypertension	I87.31	ICD10	Chronic venous hypertension (idiopathic) with ulcer
Hypertension	I87.311	ICD10	Chronic venous hypertension (idiopathic) with ulcer of right lower extremity
Hypertension	I87.312	ICD10	Chronic venous hypertension (idiopathic) with ulcer of left lower extremity
Hypertension	I87.313	ICD10	Chronic venous hypertension (idiopathic) with ulcer of bilateral lower extremity
Hypertension	I87.319	ICD10	Chronic venous hypertension (idiopathic) with ulcer of unspecified lower extremity
Hypertension	I87.32	ICD10	Chronic venous hypertension (idiopathic) with inflammation
Hypertension	I87.321	ICD10	Chronic venous hypertension w inflammation of r low extrem
Hypertension	I87.322	ICD10	Chronic venous hypertension (idiopathic) with inflammation of left lower extremity
Hypertension	I87.323	ICD10	Chronic venous hypertension (idiopathic) with inflammation of bilateral lower extremity
Hypertension	I87.329	ICD10	Chronic venous hypertension w inflammation of unsp low extrm
Hypertension	I87.33	ICD10	Chronic venous hypertension (idiopathic) with ulcer and inflammation
Hypertension	I87.331	ICD10	Chronic venous hypertension (idiopathic) with ulcer and inflammation of right lower extremity
Hypertension	I87.332	ICD10	Chronic venous hypertension (idiopathic) with ulcer and inflammation of left lower extremity

Hypertension	I87.333	ICD10	Chronic venous hypertension (idiopathic) with ulcer and inflammation of bilateral lower extremity
Hypertension	I87.339	ICD10	Chronic venous hypertension (idiopathic) with ulcer and inflammation of unspecified lower extremity
Hypertension	I87.39	ICD10	Chronic venous hypertension (idiopathic) with other complications
Hypertension	I87.391	ICD10	Chronic venous hypertension w oth comp of r low extrem
Hypertension	I87.392	ICD10	Chronic venous hypertension w oth comp of l low extrem
Hypertension	I87.393	ICD10	Chronic venous hypertension (idiopathic) with other complications of bilateral lower extremity
Hypertension	I87.399	ICD10	Chronic venous hypertension (idiopathic) with other complications of unspecified lower extremity
Hypertension	O10.0	ICD10	Pre-existing hypertension complicating pregnancy
Hypertension	O10.0	ICD10	Pre-existing essential hypertension complicating pregnancy
Hypertension	O10.01	ICD10	Pre-existing essential hypertension complicating pregnancy
Hypertension	O10.011	ICD10	Pre-existing essential hypertension complicating pregnancy
Hypertension	O10.012	ICD10	Pre-existing essential hypertension complicating pregnancy
Hypertension	O10.013	ICD10	Pre-existing essential hypertension complicating pregnancy
Hypertension	O10.019	ICD10	Pre-existing essential hypertension complicating pregnancy
Hypertension	O10.02	ICD10	Pre-existing essential hypertension complicating childbirth
Hypertension	O10.03	ICD10	Pre-existing essential hypertension complicating the puerperium
Hypertension	O10.1	ICD10	Pre-existing hypertensive heart disease complicating pregnancy
Hypertension	O10.11	ICD10	Pre-existing hypertensive heart disease complicating pregnancy

Hypertension	O10.111	ICD10	Pre-existing hypertensive heart disease complicating pregnancy
Hypertension	O10.112	ICD10	Pre-existing hypertensive heart disease complicating pregnancy
Hypertension	O10.113	ICD10	Pre-existing hypertensive heart disease complicating pregnancy
Hypertension	O10.119	ICD10	Pre-existing hypertensive heart disease complicating pregnancy
Hypertension	O10.12	ICD10	Pre-existing hypertensive heart disease complicating childbirth
Hypertension	O10.13	ICD10	Pre-existing hypertensive heart disease complicating the puerperium
Hypertension	O10.2	ICD10	Pre-existing hypertensive chronic kidney disease complicating pregnancy
Hypertension	O10.21	ICD10	Pre-existing hypertensive chronic kidney disease complicating pregnancy
Hypertension	O10.211	ICD10	Pre-existing hypertensive chronic kidney disease complicating pregnancy
Hypertension	O10.212	ICD10	Pre-existing hypertensive chronic kidney disease complicating pregnancy
Hypertension	O10.213	ICD10	Pre-existing hypertensive chronic kidney disease complicating pregnancy
Hypertension	O10.219	ICD10	Pre-existing hypertensive chronic kidney disease complicating pregnancy
Hypertension	O10.22	ICD10	Pre-existing hypertensive chronic kidney disease complicating childbirth
Hypertension	O10.23	ICD10	Pre-existing hypertensive chronic kidney disease complicating the puerperium
Hypertension	O10.3	ICD10	Pre-existing hypertensive heart and chronic kidney disease complicating pregnancy
Hypertension	O10.31	ICD10	Pre-existing hypertensive heart and chronic kidney disease complicating pregnancy
Hypertension	O10.311	ICD10	Pre-existing hypertensive heart and chronic kidney disease complicating pregnancy
Hypertension	O10.312	ICD10	Pre-existing hypertensive heart and chronic kidney disease complicating pregnancy

Hypertension	O10.313	ICD10	Pre-existing hypertensive heart and chronic kidney disease complicating pregnancy
Hypertension	O10.319	ICD10	Pre-existing hypertensive heart and chronic kidney disease complicating pregnancy
Hypertension	O10.32	ICD10	Pre-existing hypertensive heart and chronic kidney disease complicating childbirth
Hypertension	O10.33	ICD10	Pre-existing hypertensive heart and chronic kidney disease complicating the puerperium
Hypertension	O10.4	ICD10	Pre-existing secondary hypertension complicating pregnancy
Hypertension	O10.41	ICD10	Pre-existing secondary hypertension complicating pregnancy
Hypertension	O10.411	ICD10	Pre-existing secondary hypertension complicating pregnancy
Hypertension	O10.412	ICD10	Pre-existing secondary hypertension complicating pregnancy
Hypertension	O10.413	ICD10	Pre-existing secondary hypertension complicating pregnancy
Hypertension	O10.419	ICD10	Pre-existing secondary hypertension complicating pregnancy
Hypertension	O10.42	ICD10	Pre-existing secondary hypertension complicating childbirth
Hypertension	O10.43	ICD10	Pre-existing secondary hypertension complicating the puerperium
Hypertension	O10.9	ICD10	Unspecified pre-existing hypertension complicating pregnancy
Hypertension	O10.91	ICD10	Unspecified pre-existing hypertension complicating pregnancy
Hypertension	O10.911	ICD10	Unspecified pre-existing hypertension complicating pregnancy
Hypertension	O10.912	ICD10	Unspecified pre-existing hypertension complicating pregnancy
Hypertension	O10.913	ICD10	Unspecified pre-existing hypertension complicating pregnancy
Hypertension	O10.919	ICD10	Unspecified pre-existing hypertension complicating pregnancy

Hypertension	O10.92	ICD10	Unspecified pre-existing hypertension complicating childbirth
Hypertension	O10.93	ICD10	Unspecified pre-existing hypertension complicating the puerperium
Hypertension	O13	ICD10	Gestational [pregnancy-induced] hypertension without significant proteinuria
Hypertension	O13.1	ICD10	Gestational [pregnancy-induced] hypertension without significant proteinuria
Hypertension	O13.2	ICD10	Gestational [pregnancy-induced] hypertension without significant proteinuria
Hypertension	O13.3	ICD10	Gestational [pregnancy-induced] hypertension without significant proteinuria
Hypertension	O13.4	ICD10	Gestational htn without significant protein
Hypertension	O13.5	ICD10	Gestational htn without significant protein
Hypertension	O13.9	ICD10	Gestational [pregnancy-induced] hypertension without significant proteinuria
Hypertension	O16	ICD10	Unspecified maternal hypertension
Hypertension	O16.1	ICD10	Unspecified maternal hypertension
Hypertension	O16.2	ICD10	Unspecified maternal hypertension
Hypertension	O16.3	ICD10	Unspecified maternal hypertension
Hypertension	O16.4	ICD10	Unspecified maternal hypertension
Hypertension	O16.5	ICD10	Unspecified maternal hypertension
Hypertension	O16.9	ICD10	Unspecified maternal hypertension
Stroke	430	ICD9	Subarachnoid hemorrhage
Stroke	430	ICD9	Subarachnoid hemorrhage **
Stroke	431	ICD9	Intracerebral hemorrhage
Stroke	431	ICD9	Intracerebral hemorrhage **
Stroke	432	ICD9	Other and unspecified intracranial hemorrhage
Stroke	432	ICD9	Nontraumatic extradural hemorrhage
Stroke	432.1	ICD9	Subdural hemorrhage
Stroke	432.9	ICD9	Unspecified intracranial hemorrhage
Stroke	433	ICD9	Occlusion and stenosis of precerebral arteries
Stroke	433	ICD9	Occlusion and stenosis of basilar artery

Stroke	433	ICD9	Occlusion and stenosis of basilar artery
Stroke	433.01	ICD9	Occlusion and stenosis of basilar artery
Stroke	433.1	ICD9	Occlusion and stenosis of carotid artery
Stroke	433.1	ICD9	Occlusion and stenosis of carotid artery
Stroke	433.11	ICD9	Occlusion and stenosis of carotid artery
Stroke	433.2	ICD9	Occlusion and stenosis of vertebral artery
Stroke	433.2	ICD9	Occlusion and stenosis of vertebral artery
Stroke	433.21	ICD9	Occlusion and stenosis of vertebral artery
Stroke	433.3	ICD9	Occlusion and stenosis of multiple and bilateral precerebral arteries
Stroke	433.3	ICD9	Occlusion and stenosis of multiple and bilateral precerebral arteries
Stroke	433.31	ICD9	Occlusion and stenosis of multiple and bilateral precerebral arteries
Stroke	433.8	ICD9	Occlusion and stenosis of other specified precerebral artery
Stroke	433.8	ICD9	Occlusion and stenosis of other specified precerebral artery
Stroke	433.81	ICD9	Occlusion and stenosis of other specified precerebral artery
Stroke	433.9	ICD9	Occlusion and stenosis of unspecified precerebral artery
Stroke	433.9	ICD9	Occlusion and stenosis of unspecified precerebral artery
Stroke	433.91	ICD9	Unspecified precerebral artery
Stroke	434	ICD9	Occlusion of cerebral arteries
Stroke	434	ICD9	Cerebral thrombosis
Stroke	434	ICD9	Cerebral thrombosis
Stroke	434.01	ICD9	Cerebral thrombosis
Stroke	434.1	ICD9	Cerebral embolism
Stroke	434.1	ICD9	Cerebral embolism
Stroke	434.11	ICD9	Cerebral embolism
Stroke	434.9	ICD9	Cerebral artery occlusion
Stroke	434.9	ICD9	Cerebral artery occlusion
Stroke	434.91	ICD9	Cerebral artery occlusion
Stroke	437.1	ICD9	Other generalized ischemic cerebrovascular disease

Stroke	I63	ICD10	Cerebral infarction
Stroke	I63.6	ICD10	Cerebral infarction due to cerebral venous thrombosis
Stroke	I63.42	ICD10	Cerebral infarction due to embolism of anterior cerebral artery
Stroke	I63.12	ICD10	Cerebral infarction due to embolism of basilar artery
Stroke	I63.113	ICD10	Cerebral infarction due to embolism of bilateral vertebral arteries
Stroke	I63.13	ICD10	Cerebral infarction due to embolism of carotid artery
Stroke	I63.44	ICD10	Cerebral infarction due to embolism of cerebellar artery
Stroke	I63.4	ICD10	Cerebral infarction due to embolism of cerebral arteries
Stroke	I63.422	ICD10	Cerebral infarction due to embolism of left anterior cerebral artery
Stroke	I63.132	ICD10	Cerebral infarction due to embolism of left carotid artery
Stroke	I63.442	ICD10	Cerebral infarction due to embolism of left cerebellar artery
Stroke	I63.412	ICD10	Cerebral infarction due to embolism of left middle cerebral artery
Stroke	I63.432	ICD10	Cerebral infarction due to embolism of left posterior cerebral artery
Stroke	I63.112	ICD10	Cerebral infarction due to embolism of left vertebral artery
Stroke	I63.41	ICD10	Cerebral infarction due to embolism of middle cerebral artery
Stroke	I63.49	ICD10	Cerebral infarction due to embolism of other cerebral artery
Stroke	I63.19	ICD10	Cerebral infarction due to embolism of other precerebral artery
Stroke	I63.43	ICD10	Cerebral infarction due to embolism of posterior cerebral artery
Stroke	I63.1	ICD10	Cerebral infarction due to embolism of precerebral arteries
Stroke	I63.421	ICD10	Cerebral infarction due to embolism of right anterior cerebral artery

Stroke	I63.131	ICD10	Cerebral infarction due to embolism of right carotid artery
Stroke	I63.441	ICD10	Cerebral infarction due to embolism of right cerebellar artery
Stroke	I63.411	ICD10	Cerebral infarction due to embolism of right middle cerebral artery
Stroke	I63.431	ICD10	Cerebral infarction due to embolism of right posterior cerebral artery
Stroke	I63.111	ICD10	Cerebral infarction due to embolism of right vertebral artery
Stroke	I63.429	ICD10	Cerebral infarction due to embolism of unspecified anterior cerebral artery
Stroke	I63.139	ICD10	Cerebral infarction due to embolism of unspecified carotid artery
Stroke	I63.449	ICD10	Cerebral infarction due to embolism of unspecified cerebellar artery
Stroke	I63.40	ICD10	Cerebral infarction due to embolism of unspecified cerebral artery
Stroke	I63.419	ICD10	Cerebral infarction due to embolism of unspecified middle cerebral artery
Stroke	I63.439	ICD10	Cerebral infarction due to embolism of unspecified posterior cerebral artery
Stroke	I63.10	ICD10	Cerebral infarction due to embolism of unspecified precerebral artery
Stroke	I63.119	ICD10	Cerebral infarction due to embolism of unspecified vertebral artery
Stroke	I63.11	ICD10	Cerebral infarction due to embolism of vertebral artery
Stroke	I63.32	ICD10	Cerebral infarction due to thrombosis of anterior cerebral artery
Stroke	I63.02	ICD10	Cerebral infarction due to thrombosis of basilar artery
Stroke	I63.03	ICD10	Cerebral infarction due to thrombosis of carotid artery
Stroke	I63.34	ICD10	Cerebral infarction due to thrombosis of cerebellar artery
Stroke	I63.3	ICD10	Cerebral infarction due to thrombosis of cerebral arteries
Stroke	I63.322	ICD10	Cerebral infarction due to thrombosis of left anterior cerebral artery

Stroke	I63.032	ICD10	Cerebral infarction due to thrombosis of left carotid artery
Stroke	I63.342	ICD10	Cerebral infarction due to thrombosis of left cerebellar artery
Stroke	I63.312	ICD10	Cerebral infarction due to thrombosis of left middle cerebral artery
Stroke	I63.332	ICD10	Cerebral infarction due to thrombosis of left posterior cerebral artery
Stroke	I63.012	ICD10	Cerebral infarction due to thrombosis of left vertebral artery
Stroke	I63.31	ICD10	Cerebral infarction due to thrombosis of middle cerebral artery
Stroke	I63.39	ICD10	Cerebral infarction due to thrombosis of other cerebral artery
Stroke	I63.09	ICD10	Cerebral infarction due to thrombosis of other precerebral artery
Stroke	I63.33	ICD10	Cerebral infarction due to thrombosis of posterior cerebral artery
Stroke	I63.0	ICD10	Cerebral infarction due to thrombosis of precerebral arteries
Stroke	I63.321	ICD10	Cerebral infarction due to thrombosis of right anterior cerebral artery
Stroke	I63.031	ICD10	Cerebral infarction due to thrombosis of right carotid artery
Stroke	I63.341	ICD10	Cerebral infarction due to thrombosis of right cerebellar artery
Stroke	I63.311	ICD10	Cerebral infarction due to thrombosis of right middle cerebral artery
Stroke	I63.331	ICD10	Cerebral infarction due to thrombosis of right posterior cerebral artery
Stroke	I63.011	ICD10	Cerebral infarction due to thrombosis of right vertebral artery
Stroke	I63.329	ICD10	Cerebral infarction due to thrombosis of unspecified anterior cerebral artery
Stroke	I63.039	ICD10	Cerebral infarction due to thrombosis of unspecified carotid artery
Stroke	I63.349	ICD10	Cerebral infarction due to thrombosis of unspecified cerebellar artery
Stroke	I63.30	ICD10	Cerebral infarction due to thrombosis of unspecified cerebral artery

Stroke	I63.319	ICD10	Cerebral infarction due to thrombosis of unspecified middle cerebral artery
Stroke	I63.339	ICD10	Cerebral infarction due to thrombosis of unspecified posterior cerebral artery
Stroke	I63.00	ICD10	Cerebral infarction due to thrombosis of unspecified precerebral artery
Stroke	I63.019	ICD10	Cerebral infarction due to thrombosis of unspecified vertebral artery
Stroke	I63.01	ICD10	Cerebral infarction due to thrombosis of vertebral artery
Stroke	I63.52	ICD10	Cerebral infarction due to unspecified occlusion or stenosis of anterior cerebral artery
Stroke	I63.22	ICD10	Cerebral infarction due to unspecified occlusion or stenosis of basilar arteries
Stroke	I63.523	ICD10	Cerebral infarction due to unspecified occlusion or stenosis of bilateral anterior cerebral arteries
Stroke	I63.233	ICD10	Cerebral infarction due to unspecified occlusion or stenosis of bilateral carotid arteries
Stroke	I63.543	ICD10	Cerebral infarction due to unspecified occlusion or stenosis of bilateral cerebellar arteries
Stroke	I63.513	ICD10	Cerebral infarction due to unspecified occlusion or stenosis of bilateral middle cerebral arteries
Stroke	I63.533	ICD10	Cerebral infarction due to unspecified occlusion or stenosis of bilateral posterior cerebral arteries
Stroke	I63.213	ICD10	Cerebral infarction due to unspecified occlusion or stenosis of bilateral vertebral arteries
Stroke	I63.23	ICD10	Cerebral infarction due to unspecified occlusion or stenosis of carotid arteries
Stroke	I63.54	ICD10	Cerebral infarction due to unspecified occlusion or stenosis of cerebellar artery
Stroke	I63.5	ICD10	Cerebral infarction due to unspecified occlusion or stenosis of cerebral arteries

Stroke	I63.522	ICD10	Cerebral infarction due to unspecified occlusion or stenosis of left anterior cerebral artery
Stroke	I63.232	ICD10	Cerebral infarction due to unspecified occlusion or stenosis of left carotid arteries
Stroke	I63.542	ICD10	Cerebral infarction due to unspecified occlusion or stenosis of left cerebellar artery
Stroke	I63.512	ICD10	Cerebral infarction due to unspecified occlusion or stenosis of left middle cerebral artery
Stroke	I63.532	ICD10	Cerebral infarction due to unspecified occlusion or stenosis of left posterior cerebral artery
Stroke	I63.212	ICD10	Cerebral infarction due to unspecified occlusion or stenosis of left vertebral arteries
Stroke	I63.51	ICD10	Cerebral infarction due to unspecified occlusion or stenosis of middle cerebral artery
Stroke	I63.59	ICD10	Cerebral infarction due to unspecified occlusion or stenosis of other cerebral artery
Stroke	I63.29	ICD10	Cerebral infarction due to unspecified occlusion or stenosis of other precerebral arteries
Stroke	I63.53	ICD10	Cerebral infarction due to unspecified occlusion or stenosis of posterior cerebral artery
Stroke	I63.2	ICD10	Cerebral infarction due to unspecified occlusion or stenosis of precerebral arteries
Stroke	I63.521	ICD10	Cerebral infarction due to unspecified occlusion or stenosis of right anterior cerebral artery
Stroke	I63.231	ICD10	Cerebral infarction due to unspecified occlusion or stenosis of right carotid arteries

Stroke	I63.541	ICD10	Cerebral infarction due to unspecified occlusion or stenosis of right cerebellar artery
Stroke	I63.511	ICD10	Cerebral infarction due to unspecified occlusion or stenosis of right middle cerebral artery
Stroke	I63.531	ICD10	Cerebral infarction due to unspecified occlusion or stenosis of right posterior cerebral artery
Stroke	I63.211	ICD10	Cerebral infarction due to unspecified occlusion or stenosis of right vertebral arteries
Stroke	I63.529	ICD10	Cerebral infarction due to unspecified occlusion or stenosis of unspecified anterior cerebral artery
Stroke	I63.239	ICD10	Cerebral infarction due to unspecified occlusion or stenosis of unspecified carotid arteries
Stroke	I63.549	ICD10	Cerebral infarction due to unspecified occlusion or stenosis of unspecified cerebellar artery
Stroke	I63.50	ICD10	Cerebral infarction due to unspecified occlusion or stenosis of unspecified cerebral artery
Stroke	I63.519	ICD10	Cerebral infarction due to unspecified occlusion or stenosis of unspecified middle cerebral artery
Stroke	I63.539	ICD10	Cerebral infarction due to unspecified occlusion or stenosis of unspecified posterior cerebral artery
Stroke	I63.20	ICD10	Cerebral infarction due to unspecified occlusion or stenosis of unspecified precerebral arteries
Stroke	I63.219	ICD10	Cerebral infarction due to unspecified occlusion or stenosis of unspecified vertebral arteries
Stroke	I63.21	ICD10	Cerebral infarction due to unspecified occlusion or stenosis of vertebral arteries
Stroke	I63.9	ICD10	Cerebral infarction
Stroke	I63.423	ICD10	Cerebral infarction due to embolism of bilateral cerebral arteries

Stroke	I63.413	ICD10	Cerebral infrc due to embolism of bi middle cerebral art
Stroke	I63.433	ICD10	Cerebral infrc due to embolism of bi post cerebral arteries
Stroke	I63.133	ICD10	Cerebral infrc due to embolism of bilateral carotid arteries
Stroke	I63.443	ICD10	Cerebral infrc due to embolism of bilateral cereblr arteries
Stroke	I63.323	ICD10	Cerebral infrc due to thombos of bi ant cerebral arteries
Stroke	I63.313	ICD10	Cerebral infrc due to thombos of bi middle cerebral arteries
Stroke	I63.333	ICD10	Cerebral infrc to thombos of bi posterior cerebral arteries
Stroke	I63.343	ICD10	Cerebral infrc to thrombosis of bilateral cereblr arteries
Stroke	I63.8	ICD10	Other cerebral infarction
Stroke	I61	ICD10	Nontraumatic intracerebral hemorrhage
Stroke	I61.3	ICD10	Nontraumatic intracerebral hemorrhage in brain stem
Stroke	I61.4	ICD10	Nontraumatic intracerebral hemorrhage in cerebellum
Stroke	I61.1	ICD10	Nontraumatic intracerebral hemorrhage in hemisphere
Stroke	I61.0	ICD10	Nontraumatic intracerebral hemorrhage in hemisphere
Stroke	I61.2	ICD10	Nontraumatic intracerebral hemorrhage in hemisphere
Stroke	I61.5	ICD10	Nontraumatic intracerebral hemorrhage
Stroke	I61.6	ICD10	Nontraumatic intracerebral hemorrhage
Stroke	I61.9	ICD10	Nontraumatic intracerebral hemorrhage
Stroke	I61.8	ICD10	Other nontraumatic intracerebral hemorrhage
Stroke	I67.81	ICD10	Acute cerebrovascular insufficiency

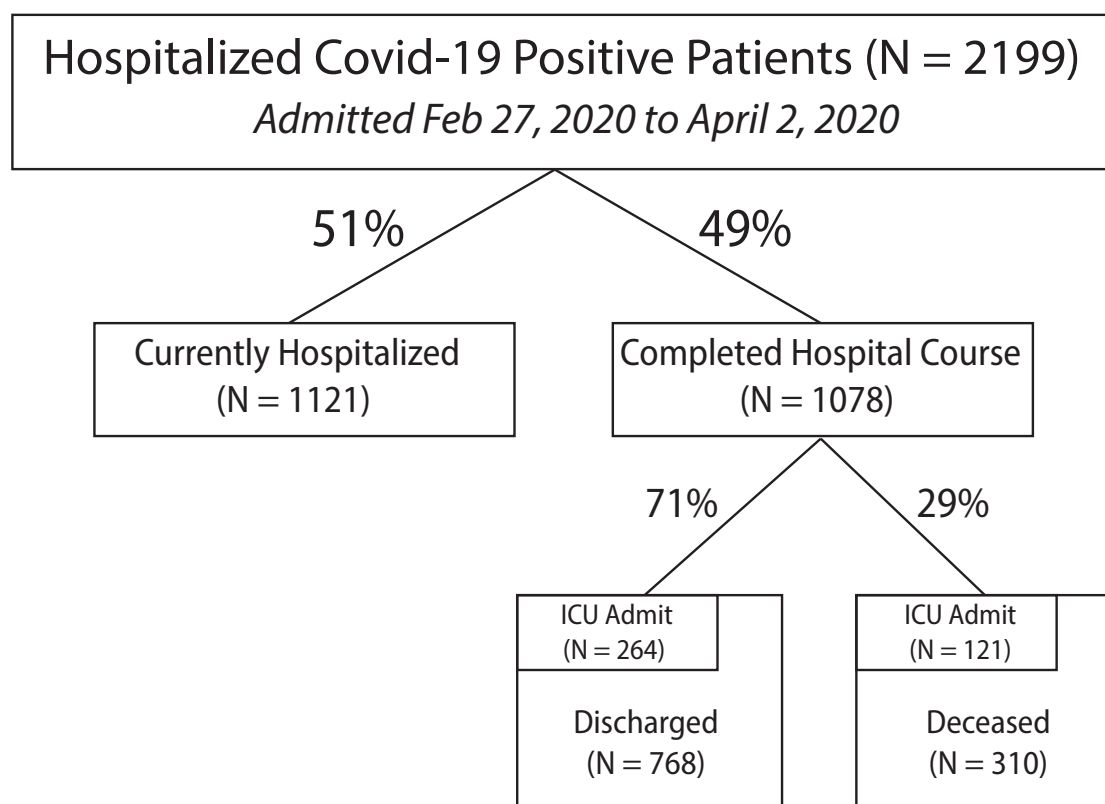
Supplementary Material

Supplementary Methods

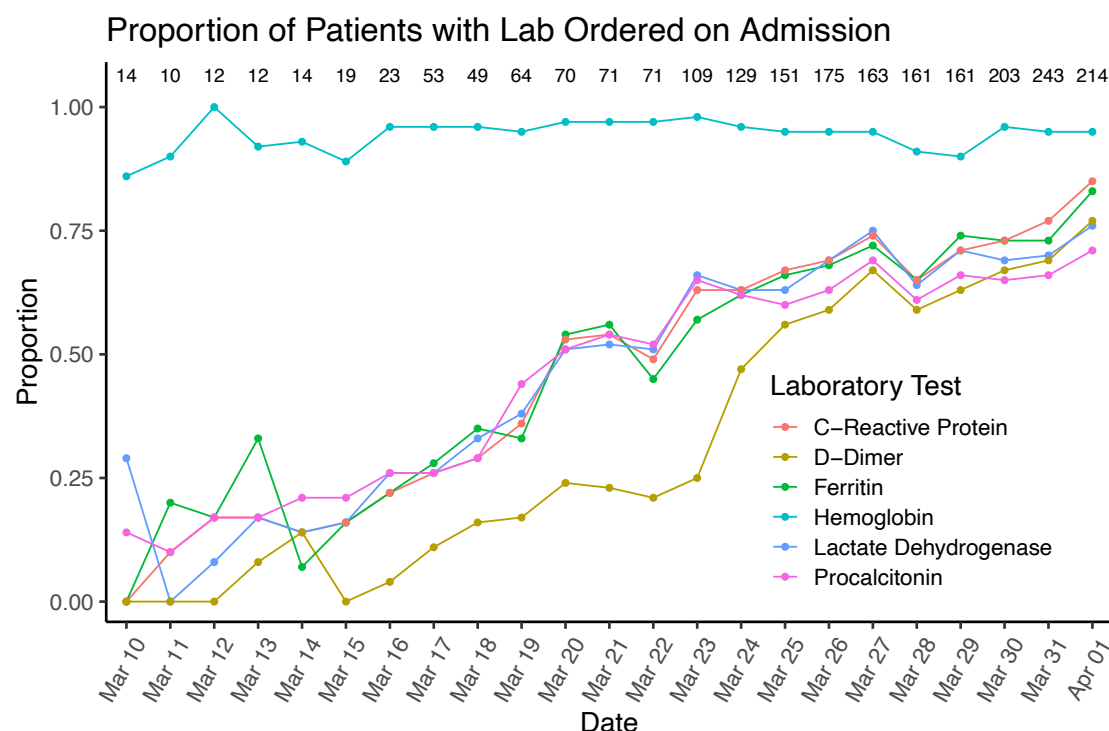
Mount Sinai Covid Informatics Center (MSCIC) Data Platform

This dataset of clinical data is the first part of a larger effort that aims to create an heterogeneous collection of COVID-19 patient data. This effort brings together different stakeholders from MSHS, including research faculty, data scientists, clinicians, and hospital administrators, among others. The resulting dataset includes or will include longitudinal electronic health record (EHR) patient clinical data, multi-omics, such as genomics, imaging, such as chest CT scans, among others. The data, which are updated on a daily basis, is made available within a secure computational framework based on internal Microsoft Azure Cloud to researchers and analysts within the MSHS and the Icahn School of Medicine at Mount Sinai. This dataset is intended to foster research projects to improve the knowledge of this disease and augment clinical operations with machine intelligence.

Supplementary Figures

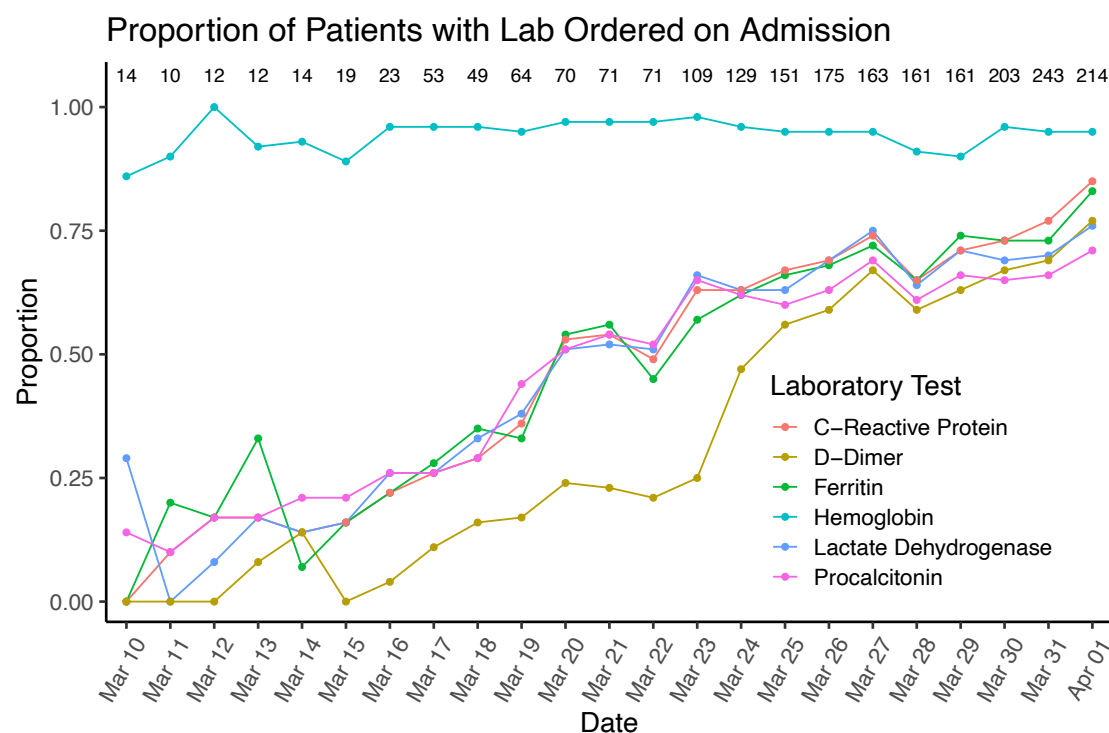


Supplementary Figure 1: Flowchart of patients included in study cohort. All patients had a confirmed COVID-19 qPCR from a nasopharyngeal swab. Patients were stratified by completion of hospital course.

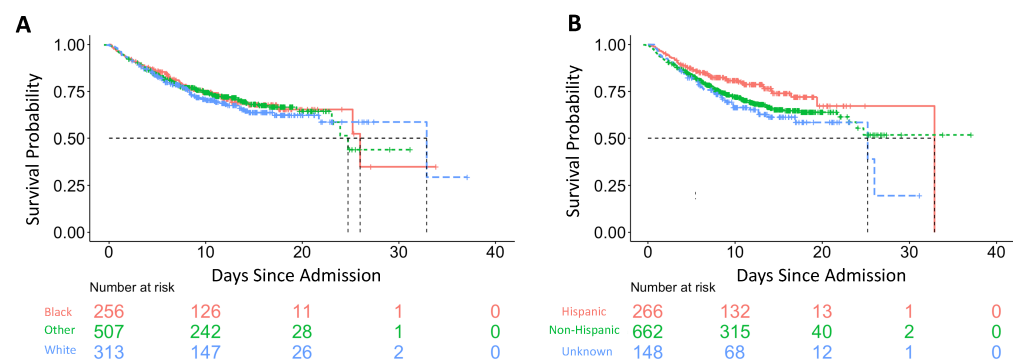


Supplementary Figure 2 Trends in laboratory test orders per day. Tests that comprised the Mount Sinai Health System COVID-19 special order (C-reactive protein, d-dimer, ferritin, hemoglobin, lactate dehydrogenase, procalcitonin) set were included. Number of orders of hemoglobin were also included as a comparison. We only included dates in which there were at least 10 COVID-19 patients admitted (i.e., 03/10/2020). We included data up to 04/01/2020 to leave a full 24 hours for the tests to be ordered.

Supplementary Figure 1: Flowchart of patients included in study cohort. All patients had a confirmed COVID-19 qPCR from a nasopharyngeal swab. Patients were stratified by completion of hospital course.



Supplementary Figure 2 Trends in laboratory test orders per day. Tests that comprised the Mount Sinai Health System COVID-19 special order (C-reactive protein, d-dimer, ferritin, hemoglobin, lactate dehydrogenase, procalcitonin) set were included. Number of orders of hemoglobin were also included as a comparison. We only included dates in which there were at least 10 COVID-19 patients admitted (i.e., 03/10/2020). We included data up to 04/01/2020 to leave a full 24 hours for the tests to be ordered.



Supplementary Figure 3 Kaplan Meier curve stratified by A) self-reported race and B) ethnicity. Individuals were censored if they were hospitalized at the time of data-freeze.

Supplementary Table 1 Diagnostic codes used to identify clinical comorbidities. Patients were determined to have a history of a clinical condition if they had at least one diagnostic code for the specific condition in their electronic health record.