

BMJ Open

BMJ Open is committed to open peer review. As part of this commitment we make the peer review history of every article we publish publicly available.

When an article is published we post the peer reviewers' comments and the authors' responses online. We also post the versions of the paper that were used during peer review. These are the versions that the peer review comments apply to.

The versions of the paper that follow are the versions that were submitted during the peer review process. They are not the versions of record or the final published versions. They should not be cited or distributed as the published version of this manuscript.

BMJ Open is an open access journal and the full, final, typeset and author-corrected version of record of the manuscript is available on our site with no access controls, subscription charges or pay-per-view fees (<http://bmjopen.bmj.com>).

If you have any questions on BMJ Open's open peer review process please email info.bmjopen@bmj.com

BMJ Open

Cost of Oropharyngeal Dysphagia after Stroke: protocol for a systematic review.

Journal:	<i>BMJ Open</i>
Manuscript ID	bmjopen-2018-022775
Article Type:	Protocol
Date Submitted by the Author:	20-Mar-2018
Complete List of Authors:	Marin, Sergio; Consorci Sanitari del Maresme, Pharmacy Department Serra-Prat, Mateu; Consorci Sanitari del Maresme, Unitat de Recerca Ortega, Omar; Consorci Sanitari del Maresme, Gastrointestinal Physiology Laboratory Clave, Pere; Consorci Sanitari del Maresme, Gastrointestinal Physiology Laboratory
Keywords:	Oropharyngeal Dysphagia, Pneumonia, aspiration, Malnutrition, Stroke < NEUROLOGY, Economics < TROPICAL MEDICINE, Health Resources

SCHOLARONE™
Manuscripts

View only

TITLE

Cost of Oropharyngeal Dysphagia after Stroke: protocol for a systematic review.

AUTHORS

1. Marin Rubio, Sergio (Corresponding Author). Consorci Sanitari del Maresme, Pharmacy, Mataro, Catalunya, ES. Postal address: Consorci Sanitari del Maresme, Carretera de Cirera, w/n. Mataro, Barcelona, ES 08304.

Email: smarin@csgm.cat

Tel. 93 741 77 00. Fax. 93 741 77 53.

2. Serra Prat, Mateu. Consorci Sanitari del Maresme, Research Unit, Mataro, Catalunya, ES. Centro de Investigación Biomédica en Red de enfermedades hepáticas y digestivas (CIBERehd), Instituto de Salud Carlos III, Barcelona Catalunya, ES.

3. Ortega Fernandez, Omar. Consorci Sanitari del Maresme, Gastrointestinal Physiology Laboratory, Universitat Autònoma de Barcelona, Mataro, Catalunya, ES. Centro de Investigación Biomédica en Red de enfermedades hepáticas y digestivas (CIBERehd), Instituto de Salud Carlos III, Barcelona Catalunya, ES.

4. Clavé Civit, Pere. Consorci Sanitari del Maresme, Gastrointestinal Physiology Laboratory, Universitat Autònoma de Barcelona, Mataro, Catalunya, ES. Centro de Investigación Biomédica en Red de enfermedades hepáticas y digestivas (CIBERehd), Instituto de Salud Carlos III, Barcelona Catalunya, ES.

WORD COUNT

3553.

ABSTRACT

Introduction:

Oropharyngeal Dysphagia (OD) is a major disorder following stroke. OD can produce alterations in both the efficacy and safety of deglutition and may result in malnutrition, dehydration, frailty, respiratory infections and pneumonia. These complications can be avoided by early detection and treatment of OD in post-stroke patients and hospital stays, drug consumption and mortality rates can be reduced. Apart from acute in-hospital costs due to OD complications, there are also other costs related to post-stroke OD, such as direct non-healthcare costs or indirect costs. However, costs associated with acute and chronic OD in stroke patients have been poorly studied and are not well known. The objective of this systematic review is to assess and summarize literature on the additional attributable cost of OD in post-stroke patients.

Methods and analysis:

A systematic review of studies on the cost of OD and its complications (aspiration, malnutrition, dehydration, aspiration pneumonia and death) in stroke patients will be performed from the hospital, the health care system and social perspectives. The main outcome of interest is the additional costs attributable to post-stroke OD. We will search MEDLINE, EMBASE and the National Health Service Economic Evaluation Database (NHS EED). Studies will be included if they are partial economic evaluation studies, studies that provide information on costs in adult (>18 years) post stroke patients with OD and/or its complications (malnutrition, dehydration, frailty, respiratory infections and pneumonia) or economic evaluation studies in which the cost of the disease has been estimated. Studies

1
2
3
4 will be excluded if they refer to oesophageal dysphagia or OD caused by causes other than
5
6 stroke. Main study information will be presented and summarized in tables, separately for
7
8 controlled and not-controlled studies, and according to the perspective in which costs were
9
10 measured.

11 12 13 **Ethics and dissemination:**

14
15
16 The results of this systematic review will be published in a peer-reviewed journal.
17
18

19 20 21 **KEYWORDS**

22
23
24 Oropharyngeal Dysphagia

25
26
27 Pneumonia, aspiration

28
29
30 Malnutrition

31
32
33 Stroke

34
35
36 Economics

37
38
39 Health Resources

40 41 42 43 **STRENGTHS AND LIMITATIONS OF THIS STUDY**

44
45
46 This systematic review will help us understand the state of the art of health-economic
47
48 analysis regarding the burden of post-stroke OD.

49
50
51 This systematic review can help as a first step to induce changes in the provision of clinical
52
53
54 services for this very prevalent and serious disorder.
55
56
57
58
59
60

1
2
3
4 Unpublished material and abstracts will not be included in this systematic review.
5

6
7 It is possible that not all studies will be encountered despite the developed strategy.
8

9 A publication bias could affect the results of this systematic review.
10
11
12
13
14
15
16
17
18
19
20
21
22
23
24
25
26
27
28
29
30
31
32
33
34
35
36
37
38
39
40
41
42
43
44
45
46
47
48
49
50
51
52
53
54
55
56
57
58
59
60

INTRODUCTION

Oropharyngeal Dysphagia (OD) is a major disorder following stroke with a high incidence in acute post-stroke patients (37-78%).^[1] OD can improve after the first weeks of the stroke, however it persists in as many as 50% of patients.^[2] OD, which is classified in the latest editions of the International Classification of Diseases (ICD-10) promoted by the World Health Organization (3), can produce alterations in both the efficacy and the safety of deglutition. Impaired safety of swallow causes malnutrition and/or dehydration in up to 25% of patients and impaired safety of swallow may lead to aspiration pneumonia with high mortality rates.^[1, 4-5] However, still today, most patients do not receive comprehensive care and post-stroke OD is an underdiagnosed and undertreated condition worldwide. OD is an easy and inexpensive stroke complication to diagnose. Position Statements of the European Society for Swallowing Disorders recommend all stroke patients should be screened for OD with available, easy to use and validated screening tools.^[6] If OD is diagnosed, the appropriate volume and viscosity of liquids and texture of solid food must be selected to avoid penetrations and aspirations. Moreover, screening and treatment of malnutrition and dehydration, and screening and promotion of good oral health practices among these patients should also be implemented to reduce bacterial colonization by respiratory pathogens.^[7-8]

Early detection and treatment of OD in post-stroke patients can avoid these complications and reduce hospital stays, readmissions, aspiration pneumonia and mortality rates, as well as the use of some medication such as antibiotics.^[9] Taking into account all these secondary complications related to post stroke OD, this illness could have a high economic impact on health care costs. The correct treatment of this illness could lead to considerable savings in

1
2
3
4 sanitary costs. Apart from acute in-hospital costs due to OD complications, there are also
5
6 other costs related to post-stroke OD, such as rehabilitation care, institutionalization, direct
7
8 non-healthcare costs, or indirect costs due to productivity losses. The chronic nature of OD
9
10 means medical costs related to patient care outside acute hospital attention must be taken
11
12 into account. The knowledge of costs related to this post-stroke disorder can lead to a better
13
14 understanding of its impact. Our hypothesis is that the impact of OD on the health-economic
15
16 and social costs of stroke is high and that minimal care of OD is economically sounder than
17
18 low care of OD. Therefore our aim is to quantify the cost of illness of acute and chronic post-
19
20 stroke OD. It is important to understand the economic burden in order to change clinical
21
22 practice. However, costs associated to acute and chronic OD in stroke patients have been
23
24 poorly studied and are not well known. The objective of this systematic review is to assess
25
26 and summarize all the knowledge on the additional attributable cost of OD in post-stroke
27
28 patients.
29
30
31
32
33

34 METHODS AND ANALYSIS

35
36 A systematic review of studies on the cost of OD and its complications (aspiration,
37
38 malnutrition, dehydration, aspiration pneumonia or death) in stroke patients will be
39
40 performed from hospital, health care system and social perspectives. The main outcome of
41
42 interest is the additional costs attributable to post-stroke OD. This systematic review will be
43
44 performed during 2018.
45
46
47

48 **Literature search**

49
50 We will search MEDLINE using Pubmed and EMBASE using Ovid. We will search on the
51
52 National Health Service Economic Evaluation Database (NHS EED) as well using the Center
53
54 for Reviews and Dissemination Database of the University of York. The Mesh and search
55
56
57
58
59
60

1
2
3
4 terms used in the search strategy and their combination are described in table 1. No
5
6 publication date and no language restrictions will be imposed. Unpublished material and
7
8 abstracts will not be included in this systematic review.
9

10 11 **Selection process**

12
13 We will analyse all the studies identified through the literature search described in this
14
15 protocol using a double-phase process: an initial screening phase and a posterior
16
17 selection phase where studies will be included according to the review eligibility
18
19 criteria. The references of the studies included will be checked for additional eligible
20
21 studies.
22
23

24
25 In the initial screening phase, the abstract and title of the studies will be analyzed to
26
27 eliminate studies not containing data on costs in post-stroke OD, its complications
28
29 (malnutrition, dehydration, frailty, respiratory infections and pneumonia) or relevant data or
30
31 information.
32
33

34
35 In the second selection phase, studies will be included in the systematic review if they have
36
37 partial economic evaluation, studies that provide information about costs in adult (>18
38
39 years) post stroke patients with OD and/or its complications (malnutrition, dehydration,
40
41 frailty, respiratory infections and pneumonia) or economic evaluation studies in which the
42
43 cost of the disease has been estimated. Studies will be excluded if they are (a) oesophageal
44
45 dysphagia studies, (b) studies not related to OD, (c) studies in which OD is related to a cause
46
47 other than stroke, (d) duplicate publications of the same study or, (e) other causes
48
49 (explained above). This information will be presented in a content table. Full text of selected
50
51 studies will be carefully assessed according to a pre-established data collection notebook.
52
53

54
55 Figure 1 summarizes the selection process. Two independent reviewers will participate in
56
57
58
59
60

1
2
3
4 this selection process. In case of disagreement over one or more studies, a third reviewer
5
6 will review the study and a final consensus will be made. The reason for excluding the study
7
8 will be recorded.
9

10 11 **Data collection**

12
13 Two reviewers will extract data from the selected studies and will register it in a standard
14
15 data collection form. In case of disagreement between them, a third reviewer opinion will be
16
17 required to reach an agreement and to take a final consensus decision. If necessary, we will
18
19 contact authors of included studies in order to ask for unreported information or to clarify
20
21 possible misunderstandings. Data directly obtained from the authors will be clearly
22
23 identified. We will report any assumption resulting from lost or unavailable information. To
24
25 manage study data, we will transfer all information in the data collection form to a spread
26
27 sheet. Data gathering will refer to main study characteristics, quality assessment and study
28
29 results. The data collection form used in the process is available in the appendix of this
30
31 protocol. The information to be obtained from each study is presented below:
32
33

- 34
35 a. Study identification: First author, journal of publication, and year of publication.
36
37
38
39 b. Main design characteristics: type of study (cost of illness study or another type of study
40
41 that provides cost of illness information in this field); epidemiological approach (cross-
42
43 sectional or longitudinal); retrospective or prospective data gathering; perspective of the
44
45 analysis (hospital, health care system, societal or insurance carrier perspective); time
46
47 horizon; use of temporary discount rate; sensitivity analysis (yes/no); presence of a control
48
49 group (patients not affected by OD); location/setting.
50
51
52
53
54
55
56
57
58
59
60

1
2
3
4 c. Study sample: sample size; socio-demographic data (age, average and range; gender);
5
6 patient inclusion and exclusion criteria; patient's functional capacity (RANKIN, Barthel);
7
8 patient's comorbidities (Charlson); stroke type (ischemic or haemorrhagic); NIHSS scale
9
10 and/or Canadian scale on admission and on discharge; fibrinolysis treatment (yes/no);
11
12 endovascular treatment (yes/no); method used to diagnose OD (videofluoroscopy (VFS),
13
14 fiberoptic endoscopic evaluation of swallowing (FEES), volume-viscosity swallowing test (V-
15
16 VST), or other bedside methods); nutritional assessment; discharge destination
17
18 (rehabilitation ward, nursing home, , domicile).
19
20

21
22 d. Elements of cost considered: Direct health care costs (hospitalization, institutionalization
23
24 in a nursing home, primary care visits, visits to the nutritionist, physical therapist, speech
25
26 therapist, ambulance, medication, diagnostic tests, special diets, etc.), direct non-health care
27
28 costs (social services and transportation costs), and indirect costs (productivity losses).
29
30

31 e. Data source: medical registries, MEDICARE databases, national patient databases,
32
33 insurance databases, data collected from individual research groups, data collected from
34
35 individual hospitals.
36
37

38 f. Study results: The primary outcome will be the additional cost of OD in post-stroke
39
40 patients reported in monetary units (euros). If the studies provide specific breakdown of
41
42 costs, we will report this information (direct hospital costs, rehabilitation care costs, direct
43
44 non-healthcare costs, indirect costs and productivity loss). We will also collect data on
45
46 quantities of health and social resource consumption, currencies used and whether the
47
48 study shows total or incremental costs. Whenever possible, the cost adjusted for the
49
50 severity of the stroke or other confounding factors will be considered.
51
52
53
54
55
56
57
58
59
60

Quality assessment, risk of bias in individual studies and meta bias

Methodological quality and risk of bias and meta bias will be evaluated using Drummond's checklist for assessing economic evaluations.[10] This checklist provides a set of items applicable to a critical appraisal of health economic evaluation studies and includes the following three domains: study design, data collection and analysis and interpretation of results. Each checklist domain has different sections; there are 10 sections containing questions on the study and every section will be rated as "Yes/partly/no". A fourth option as "not available/not applicable" has been added since not all sections are adapted to studies like cost of illness studies. Drummond's original list consists of 35 points but we have adapted it and will only use the 25 points applicable to cost studies. We will give a global score for the quality of each study which we calculate dividing the total number of points rated as "yes" between the total points applicable for each study, and record it as a percentage.

Data synthesis

A systematic meta-narrative synthesis will be made, so, we will present the results in narrative form. Findings and characteristics of the included studies will be summarized and explained in text and tables. We will present results in the text following this order: (i) data on costs related to post-stroke OD, (ii) data on costs related to OD complications in this order: (a)aspiration, (b)malnutrition, (c)dehydration, (d)aspiration pneumonia and (e)death. Data will be presented separately for controlled (incremental costs) and not-controlled studies (total costs), and according to the perspective in which costs are measured (hospital, healthcare system or societal perspective). Main study information will be presented and summarized in several tables of evidence. This presentation will be performed separately in

1
2
3
4 the same way as in tables. No conversion of study data will be performed and all data will be
5
6 reported in the original format during the initial presentation of the results. One set of tables
7
8 of evidence will present main designs and sample characteristics as well as cost elements
9
10 considered and data source (available in appendix). Another set of tables will report data on
11
12 main results and quality assessment.
13

14
15 A weighted mean cost of post-stroke OD will be estimated for those studies with the same
16
17 perspective and time horizon and with similar design characteristics. Mean cost will be
18
19 weighted by sample size. No other quantitative methods of synthesizing data will be
20
21 performed. Moreover, evidence obtained from studies will be synthesized through a
22
23 qualitative synthesis method, using a meta-narrative method. In this section, we will take
24
25 into account the risk of bias information obtained from each study. No study will be
26
27 eliminated based on its risk of bias, but we will assess how risk of bias can affect the main
28
29 results and outcome measures. To present this data synthesis of results correctly, we will
30
31 follow the recommendations stated in the guidance from the Centre for Reviews and
32
33 Dissemination.[11]
34
35
36

37 38 **Confidence in cumulative evidence**

39
40 We will assess confidence and strength of evidence in this systematic review using GRADE
41
42 (Grading of Recommendations Assessment, Development and Evaluation) methodology.[12]
43
44 GRADE is a tool designed to assess the strength of the summarized evidence across studies
45
46 in systematic reviews by evaluating both study limitations, imprecision, inconsistency of
47
48 results, indirectness of evidence, publication bias, magnitude of the effect and the presence
49
50 of confounders that minimize the effect. Finally, we will rate the strength of evidence across
51
52
53
54
55
56
57
58
59
60

1
2
3
4 studies as high, moderate, low or very low and we will make an evidence profile with a
5
6 detailed quality assessment.
7

8 **PRISMA statement**

9
10 Systematic reviews are fundamental instruments to assess all the evidence related to a topic
11
12 precisely and trustworthily. Nowadays, systematic reviews are key tools in updating the
13
14 knowledge on a certain topic, achieving conclusions on available evidence, and taking
15
16 decisions in the health care environment. Because of this, systematic reviews must follow an
17
18 exhaustive and accurate methodology and need to be reported with clarity and
19
20 transparency. For this reason, we will use the methodology proposed by PRISMA (Preferred
21
22 Reporting Items for Systematic review and Meta-Analyses) to carry out this systematic
23
24 review.[13] In this protocol, PRISMA –P annex (Preferred Reporting Items for Systematic
25
26 Reviews and Meta-Analysis Protocols) has been used. PRISMA-P is a specific PRISMA section
27
28 to develop protocols. It can be used as a guideline to develop protocols for systematic
29
30 reviews according to PRISMA methodology. Moreover, PRISMA-P offers study examples for
31
32 each item included in the protocol. These examples are extracted from studies that have
33
34 been relevant in their respective fields, reported with high quality and carried out using
35
36 accurate methodology.[14] We need to use protocols to increase work quality and reduce to
37
38 the maximum the risk of bias secondary to mistaken internal methodology and inaccurate
39
40 reporting in order to develop systematic reviews that can lead to reliable results to help in
41
42 decision-making, improve backup for future investigation and serve as a summary of the
43
44 available evidence on a certain topic. For all these reasons, we use PRISMA as a reference in
45
46
47
48
49
50
51
52 this work.
53
54
55
56
57
58
59
60

ETHICS AND DISSEMINATION

The results of this systematic review will be published in a peer-reviewed journal. This systematic review is the first part of a research project aiming to evaluate the health economic and social costs of OD in stroke patients to better understand and raise awareness on minimal care for this common and severe complication. The full extent of this project will include a) a systematic review of the literature on the cost of OD after stroke; b) a systematic review of the literature on full economic evaluations of interventions related to OD; c) a health economic analysis of a study on the prevalence and evolution of OD in patients with stroke (with one year follow-up) to assess the cost of the illness; and d) a study on the cost-effectiveness of compensatory vs. active interventions to improve swallowing function in these patients.

PATIENT AND PUBLIC INVOLVEMENT STATEMENT

Patients will not be involved in this research study.

AUTHORS' CONTRIBUTION

S. Marin is the guarantor. S. Marin drafted the first version of this manuscript. All authors contributed on the design, provided a critical revision and read and approval the final revision of this protocol. P. Clave provided expertise on post-stroke OD. All authors contributed to the development of the introduction (rationales and objectives), the eligibility criteria, the selection of the information sources, the search strategy, the selection process, the risk of bias, data extraction criteria data synthesis and meta-bias.

ACKNOWLEDGMENTS

We would like to acknowledge Agustí Viladot, member of Mataró Hospital library service, for helping with search strategy.

FUNDING STATEMENT

This study is funded by an educational grant from Nutricia Advanced Medical Nutrition. This study is supported by Fundació Salut del Consorci Sanitari del Maresme, Ciberehd (in turn supported by the Instituto de Salud Carlos III, Barcelona, Spain) and Fundació de Recerca en Gastroenterologia (FUREGA). The sponsor has no role in the development of this study.

COMPETING INTERESTS STATEMENT

The authors affirm that there are no conflicts of interest.

FULL REFERENCES

- 1 Martino R, Foley N, Bhogal S, et al. Dysphagia After Stroke—Incidence, Diagnosis, and Pulmonary Complications. *Stroke* 2005;36:2756-2763.
- 2 Mann G, Hankey GJ, Cameron D. Swallowing function after stroke: prognosis and prognostic factors at 6 months. *Stroke* 1999;30(4):744-8.
- 3 WHO, International classification of disease [online], URL:[<http://www.who.int/classifications/icd/en>] [Date accessed: February 2018].
- 4 Clavé P, de Kraa M, Arreola V, et al. The effect of bolus viscosity on swallowing function in neurogenic dysphagia. *Aliment Pharmacol Ther* 2006;24(9):1385-94.
- 5 Cook IJ, Kahrilas PJ. AGA technical review on management of oropharyngeal dysphagia. *Gastroenterology* 1999;116(2):455-78.
- 6 Schepp SK, Tirschwell DL, Miller RM, et al. Swallowing screens after acute stroke: a systematic review. *Stroke* 2012;43(3):869-71.
- 7 van der Maarel-Wierink CD, Vanobbergen JN, Bronkhorst EM, et al. Oral health care and aspiration pneumonia in frail older people: a systematic literature review. *Gerodontology* 2013;30(1):3-9.
- 8 Seedat J, Penn C. Implementing oral care to reduce aspiration pneumonia amongst patients with dysphagia in a South African setting. *S Afr J Commun Disord* 2016;63(1).
- 9 Ickenstein GW, Riecker A, Höhlig C, et al. Pneumonia and in-hospital mortality in the context of neurogenic oropharyngeal dysphagia (NOD) in stroke and a new NOD step-wise concept. *J Neurol* 2010;257(9):1492-9.

1
2
3
4 10 Drummond MF, O'Brien B, Torrance GW, et al. Methods for the economic evaluation of
5
6 healthcare programmes. 2nd ed. Oxford. Oxford University Press 1997.
7

8
9 11 Centre for Reviews and Dissemination. Systematic Reviews: CRD's Guidance for
10
11 Undertaking Reviews in Health Care. York: Centre for Reviews and Dissemination, University
12
13 of York 2009.
14

15
16 12 Guyatt G, Oxman AD, Akl EA, et al. GRADE guidelines: 1. Introduction-GRADE evidence
17
18 profiles and summary of findings tables. *J Clin Epidemiol* 2011;64(4):383-94.
19

20
21
22 13 Liberati A, Altman DG, Tetzlaff J, et al. The PRISMA Statement for Reporting Systematic
23
24 Reviews and Meta-Analyses of Studies That Evaluate HealthCare Interventions: Explanation
25
26 and Elaboration. *BMJ* 2009;339:b2700.
27

28
29 14 Shamseer L, Moher D, Clarke M, et al. Preferred reporting items for systematic review
30
31 and meta-analysis protocols (PRISMA-P) 2015: elaboration and explanation. *BMJ*
32
33 2015;350:g7647
34

Table 1: Search terms and MeSH terms used in the bibliographic search

Terms related to Oropharyngeal Dysphagia and connected among themselves by "OR"	Terms related to Stroke and connected among themselves by "OR"	Terms related to Health Economics and connected among themselves by "OR"
1."Oropharyngeal Dysphagia" 2."Dysphag*" 3."Dysphagia therapy" 4."Deglutition"[Mesh] 5."Deglutition Disorders"[Mesh] 6."Oropharynx/abnormalities"[Mesh] 7."Oropharynx/diagnosis"[Mesh] 8."Oropharynx/diagnostic imaging"[Mesh] 9."Oropharynx/pathology"[Mesh] 10."Oropharynx/pharmacology"[Mesh] 11."Oropharynx/physiopathology"[Mesh] 12."Oropharynx/therapy"[Mesh] 13."Pneumonia, aspiration"[Mesh] 14."Respiratory Aspiration"[Mesh] 15."Pneumonia/etiology"[Mesh] 16."Pneumonia/prevention and control"[Mesh] 17."Nutritional Status"[Mesh] 18."Nutrition Assessment"[Mesh] 19."Malnutrition"[Mesh] 20."Enteral Nutrition*"	21."Stroke"[Mesh] 22."Stroke discharge" 23."Post-stroke" 24."Stroke Rehabilitation" [Mesh] 25."Brain Ischemia/ complications"[Mesh] 26."Cerebral Infarction"[Mesh] 27."Cerebral Hemorrhage"[Mesh]	28."Economics"[Mesh] 29."Economics" [Subheading] 30."Models, Economic"[Mesh] 31."Cost effective*" 32.Cost[WORD] 33.Costs[WORD] 34."Health Resources"[Mesh] 35."Tertiary Care Centers/economics"[Mesh] 36."Hospitalization/economics"[M esh] 37."Rehabilitation Centers/economics"[Mesh] 38."Physical Therapy Modalities/economics"[Mesh] 39."Length of Stay/ economics"[Mesh] 40."Medicare/economics" [Mesh] 41."Emergency Medical Services/economics" [Mesh] 42."Food, Formulated/ economics"[Mesh] 43."Cerebrovascular Disorders/ economics"[Mesh]

Terms, detailed in the three columns above, related to Oropharyngeal Dysphagia, Stroke and Health Economics will be connected using "AND".

1
2
3
4 **Figure 1: Selection process, flow diagram.**
5
6
7
8
9
10
11
12
13
14
15
16
17
18
19
20
21
22
23
24
25
26
27
28
29
30
31
32
33
34
35
36
37
38
39
40
41
42
43
44
45
46
47
48
49
50
51
52
53
54
55
56
57
58
59
60

1
2
3
4
5
6
7
8
9
10
11
12
13
14
15
16
17
18
19
20
21
22
23
24
25
26
27
28
29
30
31
32
33
34
35
36
37
38
39
40
41
42
43
44
45
46
47
48
49
50
51
52
53
54
55
56
57
58
59
60

Figure 1: Selection process, flow diagram

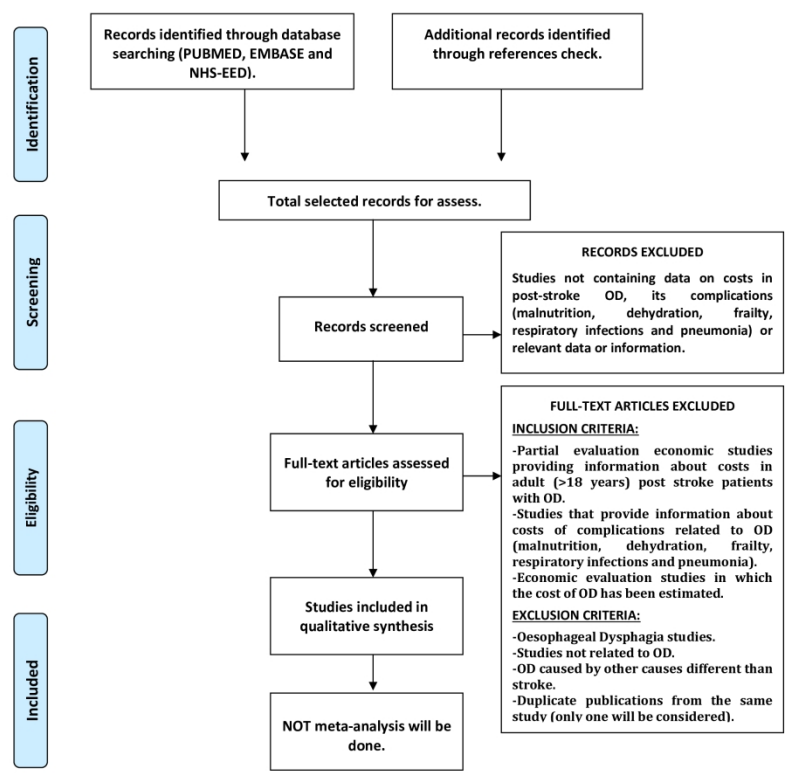


Figure 1: Selection process, flow diagram

209x297mm (300 x 300 DPI)

BMJ Open

Cost of Oropharyngeal Dysphagia after Stroke: protocol for a systematic review.

Journal:	<i>BMJ Open</i>
Manuscript ID	bmjopen-2018-022775.R1
Article Type:	Protocol
Date Submitted by the Author:	10-Jul-2018
Complete List of Authors:	Marin, Sergio; Consorci Sanitari del Maresme, Pharmacy Department Serra-Prat, Mateu; Consorci Sanitari del Maresme, Unitat de Recerca Ortega, Omar; Consorci Sanitari del Maresme, Gastrointestinal Physiology Laboratory Clave, Pere; Consorci Sanitari del Maresme, Gastrointestinal Physiology Laboratory
Primary Subject Heading:	Health economics
Secondary Subject Heading:	Gastroenterology and hepatology, Neurology
Keywords:	Oropharyngeal Dysphagia, Pneumonia, aspiration, Malnutrition, Stroke < NEUROLOGY, Economics < TROPICAL MEDICINE, Health Resources

SCHOLARONE™
Manuscripts

TITLE

Cost of Oropharyngeal Dysphagia after Stroke: protocol for a systematic review.

AUTHORS

1. Marin Rubio, Sergio (Corresponding Author). Consorci Sanitari del Maresme, Pharmacy, Mataro, Catalunya, ES.

Postal address: Consorci Sanitari del Maresme, Carretera de Cirera, w/n. Mataro, Barcelona, ES 08304.

Email: smarin@csdm.cat

Tel. 93 741 77 00. Fax.93 741 77 53.

2. Serra Prat, Mateu. Consorci Sanitari del Maresme, Research Unit, Mataro, Catalunya, ES. Centro de Investigación Biomédica en Red de enfermedades hepáticas y digestivas (CIBERehd), Instituto de Salud Carlos III, Barcelona Catalunya, ES.

3. Ortega Fernandez, Omar. Consorci Sanitari del Maresme, Gastrointestinal Physiology Laboratory, Universitat Autònoma de Barcelona, Mataro, Catalunya, ES. Centro de Investigación Biomédica en Red de enfermedades hepáticas y digestivas (CIBERehd), Instituto de Salud Carlos III, Barcelona Catalunya, ES.

4. Clavé Civit, Pere. Consorci Sanitari del Maresme, Gastrointestinal Physiology Laboratory, Universitat Autònoma de Barcelona, Mataro, Catalunya, ES. Centro de Investigación Biomédica en Red de enfermedades hepáticas y digestivas (CIBERehd), Instituto de Salud Carlos III, Barcelona Catalunya, ES.

WORD COUNT

4528

ABSTRACT

Introduction:

Oropharyngeal dysphagia (OD) is a major disorder following stroke. OD can produce alterations in both the efficacy and safety of deglutition and may result in malnutrition, dehydration, frailty, respiratory infections and pneumonia. These complications can be avoided by early detection and treatment of OD in post-stroke patients and hospital stays, medication and mortality rates can be reduced. In addition to acute in-hospital costs from OD complications, there are other costs related to post-stroke OD such as direct non-healthcare costs or indirect costs. However, costs associated with acute and chronic OD in stroke patients have been poorly studied and are not well known. The objective of this systematic review is to assess and summarize literature on the costs related to OD in post-stroke patients.

Methods and analysis:

A systematic review of studies on the cost of OD and its complications (aspiration, malnutrition, dehydration, aspiration pneumonia and death) in stroke patients will be performed from the perspectives of the hospital, the health care system and/or the society. The main outcomes of interest are the costs related to post-stroke OD. We will search MEDLINE, EMBASE and the National Health Service Economic Evaluation Database (NHS EED). Studies will be included if they are partial economic evaluation studies, studies that provide information on costs in adult (>17 years) post-stroke patients with OD and/or its complications (malnutrition, dehydration, frailty, respiratory infections and pneumonia) or economic evaluation studies in which the cost of the disease has been estimated. Studies

1
2
3
4 will be excluded if they refer to oesophageal dysphagia or OD caused by causes other than
5
6 stroke. Main study information will be presented and summarized in tables, separately for
7
8 studies that provide incremental costs attributable to OD or its complications and studies
9
10 that report the effect of OD or its complications on total costs of stroke, and according to
11
12 the perspective from which costs were measured.
13
14

15 **Ethics and dissemination:**

16
17 The results of this systematic review will be published in a peer-reviewed journal.
18
19

20
21 **PROSPERO registration number: CRD42018099977.**
22
23

24 **KEYWORDS**

25
26 Oropharyngeal Dysphagia
27

28
29 Deglutition Disorders
30

31
32 Pneumonia, aspiration
33

34
35 Respiratory Aspiration
36

37
38 Malnutrition
39

40
41 Stroke
42

43
44 Stroke Rehabilitation
45

46
47 Cerebral Infarction
48

49
50 Cerebral Hemorrhage
51

52
53 Economics
54

55
56 Health Resources
57
58
59
60

STRENGTHS AND LIMITATIONS OF THIS STUDY

This systematic review protocol was performed using the PRISMA recommendations.

The proposed methodology will allow us to accurately report the evidence on this topic and to assess the quality of the selected studies.

The bibliographic search considers the bibliographic databases Medline and Embase.

Some relevant studies may not be identified despite the strict search strategy performed.

Unpublished material and abstracts will not be included in this systematic review.

A potential bias towards studies demonstrating high costs of OD could affect the results of this systematic review.

Costs are very context-specific so they are difficult to extrapolate from one setting to another.

Quantitative synthesis of results is not considered because of the suspected heterogeneity in the design, study population, the cost elements considered, and the perspectives and follow-up considered.

INTRODUCTION

Oropharyngeal Dysphagia (OD) is a major disorder following stroke with a high incidence in acute post-stroke patients (37-78%).^[1] OD can improve after the first weeks of the stroke, however it persists in as many as 50% of patients.^[2] OD, which is classified in the latest editions of the International Classification of Diseases (ICD-10) promoted by the World Health Organization (3), can produce alterations in both the efficacy and the safety of deglutition. Impaired efficacy of swallow causes malnutrition and/or dehydration in up to

1
2
3
4 25% of patients and impaired safety of swallow may lead to aspiration pneumonia with high
5
6 mortality rates.[1,4-5] However, still today, most patients do not receive comprehensive
7
8 care and post-stroke OD is an underdiagnosed and undertreated condition worldwide. OD is
9
10 an inexpensive complication to diagnose. For OD diagnosis, well-established methods and
11
12 tools exist, such as routine screening followed by expert assessment. Position Statements of
13
14 the European Society for Swallowing Disorders recommend that all stroke patients should be
15
16 screened for OD with available, easy to use and validated screening tools.[6] Evidence-based
17
18 and effective treatment for OD is mainly oriented to compensating swallow impairments
19
20 through adaptation of fluid viscosity and solid food textures to avoid aspiration and choking,
21
22 and improving nutritional status and oral health to avoid respiratory infections. Advances in
23
24 treatment are mainly focused on peripheral stimulation strategies and central, noninvasive
25
26 stimulation strategies. Among these methods, transcutaneous and intrapharyngeal electrical
27
28 stimulation, pharmacological stimulation through TRPV agonists and non invasive brain
29
30 stimulation techniques (NIBS), repetitive transcranial magnetic stimulation, and transcranial
31
32 direct current stimulation are emerging treatments for swallow dysfunction among post-
33
34 stroke patients.[7] The aim of these interventions is to restore the swallow function.
35
36
37
38
39

40
41 Screening and treatment of malnutrition and dehydration are also two important challenges
42
43 for these patients. Moreover, screening and promotion of good oral health practices among
44
45 these patients should be implemented to reduce bacterial colonization by respiratory
46
47 pathogens.[8-9]
48
49

50
51 Regardless of its etiology, OD has been related to longer length of stay, and higher inpatient
52
53 costs, likelihood of being transferred to post-acute care facility and inpatient mortality
54
55 during hospitalization.[10] Early detection and treatment of OD in post-stroke patients can
56
57
58
59
60

1
2
3
4 diminish these complications and reduce hospital stays, readmissions, aspiration pneumonia
5
6 and mortality rates, as well as the use of some medication such as antibiotics.[11]Taking into
7
8 account all these secondary complications related to post stroke OD, this illness could have a
9
10 high economic impact on health care costs. The correct treatment of this illness could lead
11
12 to considerable savings in health care costs. In addition to acute in-hospital costs due to OD
13
14 complications, there are other costs related to post-stroke OD such as rehabilitation care,
15
16 institutionalization, direct non-healthcare costs, and indirect costs due to loss of
17
18 productivity. The chronic nature of OD means medical costs related to patient care outside
19
20 the acute hospital setting must be taken into account. Knowing costs related to this post-
21
22 stroke disorder can lead to a better understanding of its impact. Our hypothesis is that the
23
24 impact of OD on the health-economic and social costs of stroke is high and that minimal care
25
26 of OD is economically sounder than low care of OD. Therefore our aim is to quantify the cost
27
28 of illness of acute and chronic post-stroke OD. It is important to understand the economic
29
30 burden in order to change clinical practice. However, costs associated to acute and chronic
31
32 OD in stroke patients have been poorly studied and are not well known. One study has
33
34 shown that presenting OD after stroke was associated with high mortality rates during
35
36 hospital stay and was an independent risk factor for prolonged length of hospital stay and to
37
38 be institutionalized after hospital discharge; OD was also an independent risk factor for
39
40 poorer functional capacity and increased risk of mortality 3 months after the stroke episode.
41
42 This study stated these factors were of great importance not only from the perspective of
43
44 patient health, but also because of their social and economic burden.[12] The objective of
45
46 this systematic review is to assess and summarize all the knowledge on the costs related to
47
48 OD in post-stroke patients.
49
50
51
52
53
54
55
56
57
58
59
60

METHODS AND ANALYSIS

A systematic review of studies on the cost of OD and its complications (aspiration, malnutrition, dehydration, aspiration pneumonia or death) in stroke patients will be performed from hospital, health care system and social perspectives. The main outcome of interest is the costs related to post-stroke OD. This systematic review will be performed during 2018.

PRISMA statement

Systematic reviews are fundamental instruments to assess all the evidence related to a topic precisely and trustworthily. Nowadays, systematic reviews are key tools in updating the knowledge on a certain topic, achieving conclusions on available evidence, and taking decisions in the health care environment. Because of this, systematic reviews must follow an exhaustive and accurate methodology and need to be reported with clarity and transparency. For this reason, we will use the methodology proposed by PRISMA (Preferred Reporting Items for Systematic review and Meta-Analyses) to carry out this systematic review.[13] In this protocol, PRISMA-P annex (Preferred Reporting Items for Systematic Reviews and Meta-Analysis Protocols) has been used. PRISMA-P is a specific PRISMA section to develop protocols. It can be used as a guideline to develop protocols for systematic reviews according to PRISMA methodology. Moreover, PRISMA-P offers study examples for each item included in the protocol. These examples are extracted from studies that have been relevant in their respective fields, reported with high quality and carried out using accurate methodology.[14] We need to use protocols to increase work quality and reduce to the maximum the risk of bias secondary to mistaken internal methodology and inaccurate reporting. Protocols are key tools for developing systematic reviews that can lead to reliable

1
2
3
4 results to help in decision-making, improve backup for future investigation and serve as a
5
6 summary of the available evidence on a certain topic. For all these reasons, we use PRISMA
7
8 as a reference in this work.
9

10 11 **Literature search**

12
13 We will search MEDLINE using Pubmed and EMBASE using Ovid. We will search on the
14
15 National Health Service Economic Evaluation Database (NHS EED) as well using the Center
16
17 for Reviews and Dissemination Database of the University of York. The Mesh and search
18
19 terms used in the search strategy and their combination are described in Table 1. Using this
20
21 search strategy in MEDLINE using Pubmed, a total of seventy articles were found in June
22
23 2018. No publication date and no language restrictions will be imposed. Unpublished
24
25 material and abstracts will not be included in this systematic review.
26
27
28

29 30 **Selection process**

31
32 We will analyse all the studies identified through the literature search described in this
33
34 protocol using a double-phase process: an initial screening phase and a subsequent selection
35
36 phase where studies will be included according to the review eligibility criteria. The
37
38 references of the studies included will be checked for additional eligible studies.
39

40
41 In the initial screening phase, the abstract and title of the studies will be analyzed to
42
43 eliminate studies not containing data on costs in post-stroke OD, its complications
44
45 (malnutrition, dehydration, frailty, respiratory infections and pneumonia) or relevant data or
46
47 information. In the abstract or title there must appear an economic term such as “costs” or
48
49 “resources consumption” and “dysphagia” or “malnutrition, dehydration, frailty, respiratory
50
51 infections and pneumonia” with “stroke”. This selection process will be done by one sole
52
53 reviewer and, subsequently, a second reviewer will check the eliminated abstracts.
54
55
56
57
58
59

1
2
3
4 In the second selection phase, studies will be included in the systematic review if they have
5
6 partial economic evaluation, studies that provide information about costs in adult (>17years)
7
8 post-stroke patients with OD and/or its complications (malnutrition, dehydration, frailty,
9
10 respiratory infections and pneumonia) or economic evaluation studies in which the cost of
11
12 the disease has been estimated. Studies will be excluded if they are (a) oesophageal
13
14 dysphagia studies, (b) studies not related to OD, (c) studies in which OD is related to a cause
15
16 other than stroke, (d) duplicate publications of the same study or, (e) other causes
17
18 (explained above). This information will be presented in a content table. Full text of selected
19
20 studies will be carefully assessed according to a pre-established data collection notebook.
21
22 Figure 1 summarizes the selection process. Two independent reviewers will participate in
23
24 this selection process. In case of disagreement over one or more studies, a third reviewer
25
26 will review the study and a final consensus will be made. The reason for excluding the study
27
28 will be recorded. No restrictions related to the size of the sample will be imposed.
29
30
31
32

33 34 **Data collection**

35
36 Two reviewers will extract data from the selected studies and will register it in a standard
37
38 data collection form. In case of disagreement between them, a third reviewer opinion will be
39
40 required to reach an agreement and to take a final consensus decision. If necessary, we will
41
42 contact authors of included studies in order to ask for unreported information or to clarify
43
44 possible misunderstandings. Data directly obtained from the authors will be clearly
45
46 identified. We will report any assumption resulting from lost or unavailable information. To
47
48 manage study data, we will transfer all information in the data collection form to a
49
50 spreadsheet. Data gathering will refer to main study characteristics, quality assessment and
51
52 study results. The information to be obtained from each study is presented below:
53
54
55
56
57
58
59
60

- 1
2
3
4 a. Study identification: First author, journal of publication, and year of publication.
5
6
7 b. Main design characteristics: type of study (cost of illness study or another type of study
8 that provides cost of illness information in this field); epidemiological approach (cross-
9 sectional or longitudinal); retrospective or prospective data gathering; perspective of the
10 analysis (hospital, patient, health care system, societal or insurance carrier perspective);
11 time horizon; use of temporary discount rate; sensitivity analysis (yes/no); presence of a
12 control group (patients not affected by OD); location/setting.
13
14 c. Study sample characteristics: sample size; socio-demographic data (age, average and
15 range; gender); patient inclusion and exclusion criteria; patient's functional capacity
16 (RANKIN, Barthel); patient's comorbidities (Charlson); stroke type (ischemic or
17 haemorrhagic); NIHSS scale and/or Canadian Neurologic Scale on admission and on
18 discharge; fibrinolysis treatment (yes/no); endovascular treatment (yes/no); method used to
19 diagnose OD (videofluoroscopy (VFS), fiberoptic endoscopic evaluation of swallowing (FEES),
20 volume-viscosity swallowing test (V-VST), or other bedside methods); nutritional
21 assessment; discharge destination (rehabilitation ward, nursing home, domicile).
22
23 d. Elements of cost considered: Direct healthcare costs (hospital ward, intensive care unit,
24 emergency room, institutionalization in a nursing home, primary care visits and to
25 nutritionists, physical therapists, speech therapists, ambulance, medication, diagnostic tests,
26 special diets, tube-feeding, PEG-insertion, antibiotic consumption, pneumonia-related costs,
27 etc.), direct non-health care costs (social services and transportation costs), and indirect
28 costs (loss of productivity).
29
30
31
32
33
34
35
36
37
38
39
40
41
42
43
44
45
46
47
48
49
50
51
52
53
54
55
56
57
58
59
60

1
2
3
4 e. Data source: medical registries, MEDICARE databases, national patient databases,
5
6 insurance databases, data collected from individual research groups, data collected from
7
8 individual hospitals.
9

10
11 f. Study results: The primary outcome will be the costs related to OD in post-stroke patients
12
13 reported in monetary units (euros). If the studies provide specific breakdown of costs, we will
14
15 report this information (direct hospital costs, rehabilitation care costs, direct non-healthcare
16
17 costs, indirect costs and productivity loss, and intangible costs). We will also collect data on
18
19 quantities of health and social resource consumption, currencies used and whether the
20
21 study shows total or incremental costs. Whenever possible, the cost adjusted for the
22
23 severity of the stroke or other confounding factors will be considered.
24
25

26 27 **Quality assessment, risk of bias in individual studies, meta bias and confidence in** 28 29 **cumulative evidence**

30
31 Methodological quality and risk of bias and meta bias will be evaluated using Drummond's
32
33 checklist for assessing economic evaluations.[15] This checklist provides a set of items
34
35 applicable to a critical appraisal of health economic evaluation studies and includes the
36
37 following three domains: study design, data collection and analysis and interpretation of
38
39 results. Each checklist domain has different sections; there are 10 sections containing
40
41 questions on the study and every section will be rated as "Yes/partly/no". A fourth option as
42
43 "not available/not applicable" has been added since not all sections are adapted to studies
44
45 like cost of illness studies. Drummond's original list consists of 35 points but we have
46
47 adapted it and will only use the 25 points applicable to cost studies. We will give a global
48
49 score for the quality of each study which we calculate dividing the total number of points
50
51
52
53
54
55
56
57
58
59
60

1
2
3
4 rated as “yes” between the total points applicable for each study, and record it as a
5
6 percentage.

7
8 We will assess confidence and strength of evidence in this systematic review using GRADE
9
10 (Grading of Recommendations Assessment, Development and Evaluation) methodology.[16]

11
12 GRADE is a tool designed to assess the strength of the summarized evidence across studies
13
14 in systematic reviews by evaluating both study limitations, imprecision, inconsistency of
15
16 results, indirectness of evidence, publication bias, magnitude of the effect and the presence
17
18 of confounders that minimize the effect. Finally, we will rate the strength of evidence across
19
20 studies as high, moderate, low or very low and we will make an evidence profile with a
21
22 detailed quality assessment.
23
24
25

26 27 **Data synthesis**

28
29 A systematic meta-narrative synthesis will be made, so, we will present the results in
30
31 narrative form. Findings and characteristics of the included studies will be summarized and
32
33 explained in text and tables. We will present results in the text following this order: (i) data
34
35 on costs related to post-stroke OD, (ii) data on costs related to OD complications in this
36
37 order: (a) aspiration, (b) malnutrition, (c) dehydration, (d) aspiration pneumonia and (e)
38
39 death. Data will be presented separately for those studies that provide incremental costs
40
41 attributable to OD or its complications from those studies that report the effect of OD or its
42
43 complications on total costs of stroke, and according to the perspective in which costs are
44
45 measured (hospital, patient, healthcare system, societal, or insurance carrier). Main study
46
47 information will be presented and summarized in several tables of evidence. This
48
49 presentation will be performed separately in the same way as in tables. No conversion of
50
51 study data will be performed and all data will be reported in the original format during the
52
53
54
55
56
57
58
59
60

1
2
3
4 initial presentation of the results. One set of tables of evidence will present main designs
5
6 and sample characteristics as well as cost elements considered and data source. Another set
7
8 of tables will report data on main results and quality assessment.
9

10
11 A weighted mean cost of post-stroke OD will be estimated for those studies with the same
12
13 perspective and time horizon and with similar design characteristics. Mean cost will be
14
15 weighted by sample size. No other quantitative methods of synthesizing data will be
16
17 performed. Moreover, evidence obtained from studies will be synthesized through a
18
19 qualitative synthesis method, using a meta-narrative method. In this section, we will take
20
21 into account the risk of bias information obtained from each study. No study will be
22
23 eliminated based on its risk of bias, but we will assess how risk of bias can affect the main
24
25 results and outcome measures. To present this data synthesis of results correctly, we will
26
27 follow the recommendations stated in the guidance from the Centre for Reviews and
28
29 Dissemination.[17]
30
31
32
33

34 **Glossary of terms in health economics:** [13, 18]
35

36
37 -Economic evaluation in healthcare: analytical methodology that aims to compare the costs
38
39 and the consequences in health of various alternatives (interventions, treatments,
40
41 programmes, etc.).
42

43
44 -Partial economic evaluation: economic evaluation technique that only compares the costs
45
46 of the various alternatives studied but does not consider their effects on health. Also called
47
48 cost analysis.
49

50
51 - Analysis perspective: point of view from which the analysis is focused and which
52
53 determines the cost elements to consider. Each perspective provides specific information for
54
55
56
57
58
59
60

1
2
3
4 a particular entity, e.g. hospital perspective mainly includes acute in-hospital costs while
5
6 healthcare system perspective includes costs related to those medical costs beyond the
7
8 acute in-hospital stay. The societal perspective is the most complete because it includes
9
10 healthcare and non-healthcare costs and loss of productivity.
11

12
13 - Type of costs: cost studies classify costs as direct costs, indirect costs and intangible costs.
14

- 15
16 • Direct medical costs are those related to a healthcare intervention (e.g. hospital ward
17
18 or medication) and direct non-medical costs are those associated with provision of
19
20 medical services (e.g. transportation costs).
21
- 22
23 • Indirect costs are those related to productivity loss, morbidity, mortality or time
24
25 spent.
26
- 27
28 • Intangible costs are rarely studied and are those related to suffering and pain related
29
30 to a disease or treatment.
31

32
33 -Discount rate: There is a preference to obtain benefits straight away and to delay costs.
34

35 When the time horizon is longer than one year, a temporary discount rate should be used to
36
37 allow costs and results that will occur over time to be measured at present values. An annual
38
39 3-5% discount rate is usually used.
40

41
42 -Sensitivity analysis: Some decisions in the economic analysis are based on uncertain data.
43

44 The sensitivity analysis is aimed at testing the robustness of results of the economic
45
46 evaluation when changing the assumed values of some variables used in the analysis.
47
48
49

50
51 **PATIENT AND PUBLIC INVOLVEMENT STATEMENT:**
52

53 It does not apply for this protocol.
54
55
56
57
58
59
60

ETHICS AND DISSEMINATION

The results of this systematic review will be published in a peer-reviewed journal. This systematic review is the first part of a research project aiming to evaluate the health economic and social costs of OD in stroke patients to better understand and raise awareness on minimal care for this common and severe complication. Complications of OD are related to three main aspects: a) impaired safety of swallow, causing the aspiration of respiratory pathogens to the airway; b) impaired nutritional status, leading to malnutrition, impaired immunity and frailty; and c) poor oral health and hygiene, associated with oral colonization by respiratory pathogens. It is necessary to treat these three aspects simultaneously with the aim of maximizing the number of patients treated with simple and cost-effective measures based on the best scientific evidence. This minimal and massive intervention is based on fluid and food texture adaptations, nutritional supplementation and oral hygiene.[19] The full extent of this project will include a) a systematic review of the literature on the cost of OD after stroke; b) a systematic review of the literature on full economic evaluations of interventions related to OD; c) a health economic analysis of a study on the prevalence and evolution of OD in patients with stroke (with one year follow-up) to assess the cost of the illness; and d) a study on the cost-effectiveness of compensatory vs. active interventions (those treatments for OD that aim to restore the impaired swallow function) to improve swallowing function in these patients. OD treatment is moving from compensatory strategies towards promoting brain plasticity, both to recover swallow function and to improve brain-related swallowing dysfunction.[7]

AUTHORS' CONTRIBUTION

Marin Rubio, Sergio is the guarantor. He drafted the first version of this manuscript. He provided expertise on health economics. He contributed to the development of the introduction (rationales and objectives), the eligibility criteria, the selection of the information sources, the search strategy, the selection process, the quality assessment, the data extraction criteria and the data synthesis. He read and approval the final revision of this protocol.

Serra Prat, Mateu provided expertise on investigation methodology and health economics. He provided important references for the development of the methodology of this work. He reviewed and made contributions on the methodology of all the sections of this protocol. He reviewed the correct use of all the economic terms included in this manuscript. He collaborated in writing the manuscript.

Ortega Fernandez, Omar provided expertise on post-stroke OD treatments and interventions. He contributed on the development of the data collection, quality assessment and data synthesis sections. He provided a critical revision of all the sections of this protocol. He collaborated in writing the manuscript. He collaborated in writing the manuscript.

Clavé Civit, Pere provided expertise on post-stroke OD. He reviewed the correct use of all the medical terms included in this manuscript. He contributed on the development and writing of the introduction. He provided a critical revision of all the sections of this protocol. He contributed to the correct following of the recommendations proposed by PRISMA.

All authors provided a critical revision and read and approval the final revision of this protocol.

ACKNOWLEDGMENTS

We would like to thank Agustí Viladot, member of Mataró Hospital library service, for helping with search strategy and Jane Lewis for reviewing the English. This work has been conducted within the framework of a doctoral thesis in medicine from the Department of Medicine of the Autonomous University of Barcelona.

FUNDING STATEMENT

This study is funded by an educational grant from Nutricia Advanced Medical Nutrition. This study is supported by Fundació Salut del Consorci Sanitari del Maresme, Ciberehd (in turn supported by the Instituto de Salud Carlos III, Barcelona, Spain) and Fundació de Recerca en Gastroenterologia (FUREGA). The sponsor has no role in the development of this study.

COMPETING INTERESTS STATEMENT

The authors affirm that there are no conflicts of interest.

FULL REFERENCES

- 1 Martino R, Foley N, Bhogal S, et al. Dysphagia After Stroke—Incidence, Diagnosis, and Pulmonary Complications. *Stroke* 2005;36:2756-2763.
- 2 Mann G, Hankey GJ, Cameron D. Swallowing function after stroke: prognosis and prognostic factors at 6 months. *Stroke* 1999;30(4):744-8.
- 3 WHO, International classification of disease [online], URL:[<http://www.who.int/classifications/icd/en>] [Date accessed: February 2018].
- 4 Clavé P, de Kraa M, Arreola V, et al. The effect of bolus viscosity on swallowing function in

1
2
3
4 neurogenic dysphagia. *Aliment Pharmacol Ther* 2006;24(9):1385-94.

5
6
7 5 Cook IJ, KahrilasPJ. AGA technical review on management of oropharyngeal dysphagia.
8
9
10 *Gastroenterology* 1999;116(2):455-78.

11
12 6 Schepp SK, Tirschwell DL, Miller RM, et al. Swallowing screens after acute stroke: a
13
14
15 systematic review. *Stroke*2012;43(3):869-71.

16
17 7 Cabib C, Ortega O, Kumru H, et al. Neurorehabilitation strategies for poststroke
18
19
20 oropharyngeal dysphagia: from compensation to the recovery of swallowing function. *Ann N*
21
22
23 *Y Acad Sci* 2016;1380(1):121-138.

24
25 8 van der Maarel-Wierink CD, Vanobbergen JN, Bronkhorst EM, et al. Oral health care and
26
27
28 aspiration pneumonia in frail older people: a systematic literature review.
29
30
31 *Gerodontology*2013;30(1):3-9.

32
33 9 Seedat J, Penn C. Implementing oral care to reduce aspiration pneumonia amongst
34
35
36 patients with dysphagia in a South African setting. *S Afr J Commun Disord* 2016;63(1).

37
38 10 Patel DA, Krishnaswami S, Steger E, et al. Economic and survival burden of dysphagia
39
40
41 among inpatients in the United States. *Dis Esophagus* 2018;31(1):1-7.

42
43 11 Ickenstein GW, Riecker A, Höhlig C, et al. Pneumonia and in-hospital mortality in the
44
45
46 context of neurogenic oropharyngeal dysphagia (NOD) in stroke and a new NOD step-wise
47
48
49 concept. *J Neurol* 2010;257(9):1492-9.

50
51 12 Rofes L, Muriana D, Palomeras E, et al. Prevalence, risk factors and complications of
52
53
54 oropharyngeal dysphagia in stroke patients: A cohort study. *Neurogastroenterol Motil.*
55
56
57
58
59
60 2018;23:e13338.

1
2
3
4 13 Liberati A, Altman DG, Tetzlaff J, et al. The PRISMA Statement for Reporting Systematic
5
6 Reviews and Meta-Analyses of Studies That Evaluate Health Care Interventions: Explanation
7
8 and Elaboration. *BMJ* 2009;339:b2700.
9

10
11 14 Shamseer L, Moher D, Clarke M, et al. Preferred reporting items for systematic review
12
13 and meta-analysis protocols (PRISMA-P) 2015: elaboration and explanation.
14
15 *BMJ*2015;350:g7647.
16

17
18 15 Drummond MF, O'Brien B, Torrance GW, et al. *Methods for the economic evaluation of*
19
20 *health care programmes*. 2nd ed. Oxford. Oxford University Press 1997.
21

22
23 16 Guyatt G, Oxman AD, Akl EA, et al. GRADE guidelines: 1. Introduction-GRADE evidence
24
25 profiles and summary of findings tables. *J Clin Epidemiol* 2011;64(4):383-94.
26

27
28 17 Centre for Reviews and Dissemination. *Systematic Reviews: CRD's Guidance for*
29
30 *Undertaking Reviews in Health Care*. York: Centre for Reviews and Dissemination, University
31
32 of York 2009.
33

34
35 18 Jo C. Cost-of-illness studies: concepts, scopes, and methods. *Clin Mol Hepatol*
36
37 2014;20(4):327-37.
38

39
40 19 Martín A, Ortega O, Roca M, Arús M, Clavé P. Effect of A Minimal-Massive Intervention in
41
42 Hospitalized Older Patients with Oropharyngeal Dysphagia: A Proof of Concept Study. *J Nutr*
43
44 *Health Aging* 2018;22(6):739-747.
45
46
47
48
49
50
51
52
53
54
55
56
57
58
59
60

Table 1: Search terms and MeSH terms used in the bibliographic search

Terms related to Oropharyngeal Dysphagia and connected among themselves by "OR"	Terms related to Stroke and connected among themselves by "OR"	Terms related to Health Economics and connected among themselves by "OR"
1.Oropharyngeal Dysphagia.tw. 2.Dysphag* 3.Dysphagia therapy/ 4."Deglutition"[Mesh] 5.Deglutition Disorders"[Mesh] 6."Oropharynx/abnormalities"[Mesh] 7."Oropharynx/diagnosis"[Mesh] 8."Oropharynx/diagnostic imaging"[Mesh] 9."Oropharynx/pathology"[Mesh] 10."Oropharynx/pharmacology"[Mesh] 11."Oropharynx/physiopathology"[Mesh] 12."Oropharynx/therapy"[Mesh] 13."Pneumonia, aspiration"[Mesh] 14."Respiratory Aspiration"[Mesh] 15."Pneumonia/etiology"[Mesh] 16."Pneumonia/prevention and control"[Mesh] 17."Nutritional Status"[Mesh]	21."Stroke"[Mesh] 22.Stroke discharge/ 23.Post-stroke/ 24."Stroke Rehabilitation" [Mesh] 25."Brain Ischemia/ complications"[Mesh] 26."Cerebral Infarction"[Mesh] 27."Cerebral Hemorrhage"[Mesh]	28."Economics"[Mesh] 29."Economics" [Subheading] 30."Models, Economic"[Mesh] 31.Cost effective* 32.Cost[WORD] 33.Costs[WORD] 34."Health Resources"[Mesh] 35."Tertiary Care Centers/economics"[Mesh] 36."Hospitalization/economics"[Mesh] 37."Rehabilitation Centers/economics"[Mesh] 38."Physical Therapy Modalities/economics"[Mesh] 39."Length of Stay/economics"[Mesh] 40."Medicare/economics" [Mesh] 41."Emergency Medical

18. "Nutrition Assessment"[Mesh]		Services/economics"
19. "Malnutrition"[Mesh]		[Mesh]
20. Enteral Nutrition*		42. "Food, Formulated/ economics"[Mesh]
		43. "Cerebrovascular Disorders/ economics"[Mesh]

Terms, detailed in the three columns above, related to Oropharyngeal Dysphagia, Stroke and Health Economics will be connected using "AND".

1
2
3
4 **Figure 1. Selection process flow diagram**
5
6
7
8
9
10
11
12
13
14
15
16
17
18
19
20
21
22
23
24
25
26
27
28
29
30
31
32
33
34
35
36
37
38
39
40
41
42
43
44
45
46
47
48
49
50
51
52
53
54
55
56
57
58
59
60

For peer review only

1
2
3
4
5
6
7
8
9
10
11
12
13
14
15
16
17
18
19
20
21
22
23
24
25
26
27
28
29
30
31
32
33
34
35
36
37
38
39
40
41
42
43
44
45
46
47
48
49
50
51
52
53
54
55
56
57
58
59
60

Figure 1: Selection process, flow diagram

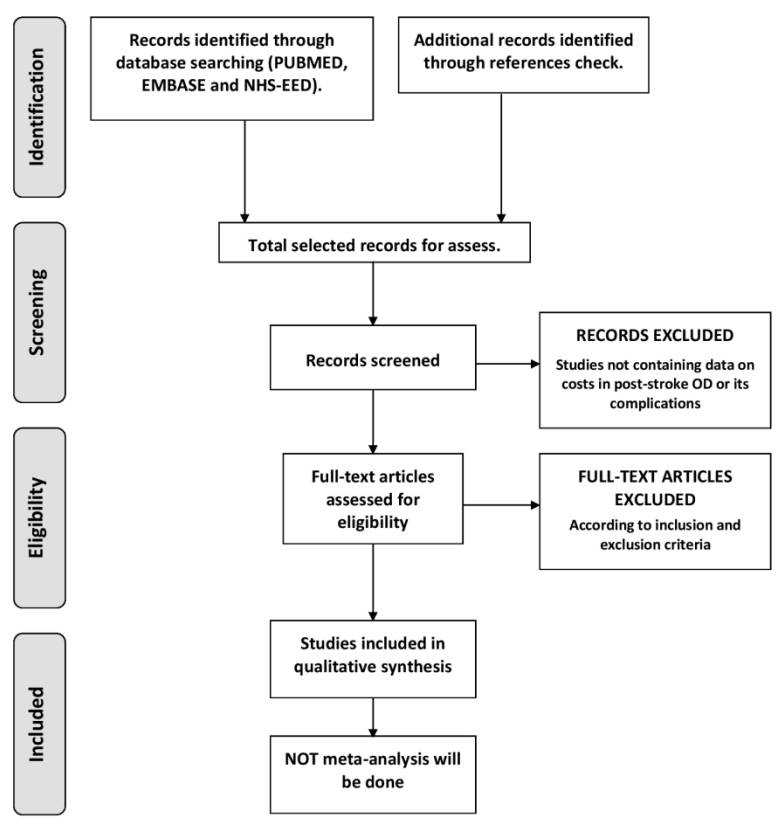


Figure 1. Selection process flow diagram

209x297mm (200 x 200 DPI)

BMJ Open

Cost of Oropharyngeal Dysphagia after Stroke: protocol for a systematic review.

Journal:	<i>BMJ Open</i>
Manuscript ID	bmjopen-2018-022775.R2
Article Type:	Protocol
Date Submitted by the Author:	18-Oct-2018
Complete List of Authors:	Marin, Sergio; Consorci Sanitari del Maresme, Pharmacy Department Serra-Prat, Mateu; Consorci Sanitari del Maresme, Unitat de Recerca Ortega, Omar; Consorci Sanitari del Maresme, Gastrointestinal Physiology Laboratory Clave, Pere; Consorci Sanitari del Maresme, Gastrointestinal Physiology Laboratory
Primary Subject Heading:	Health economics
Secondary Subject Heading:	Gastroenterology and hepatology, Neurology
Keywords:	Oropharyngeal Dysphagia, Pneumonia, aspiration, Malnutrition, Stroke < NEUROLOGY, Economics < TROPICAL MEDICINE, Health Resources

SCHOLARONE™
Manuscripts

1
2
3
4 TITLE5
6
7 Cost of Oropharyngeal Dysphagia after Stroke: protocol for a systematic review.
89
10 AUTHORS11
12 1. Marin Rubio, Sergio (Corresponding Author). Consorci Sanitari del Maresme, Pharmacy,
13 Mataro, Catalunya, ES.
1415
16 Postal address: Consorci Sanitari del Maresme, Carretera de Cirera, w/n. Mataro, Barcelona, ES
17
18 08304.
1920
21 Email: smarin@csdm.cat
2223
24 Tel. 93 741 77 00. Fax.93 741 77 53.
2526
27 2. Serra Prat, Mateu. Consorci Sanitari del Maresme, Research Unit, Mataro, Catalunya, ES.
28
29 Centro de Investigación Biomédica en Red de enfermedades hepáticas y digestivas
30
31 (CIBERehd), Instituto de Salud Carlos III, Barcelona Catalunya, ES.
3233
34
35 3. Ortega Fernandez, Omar. Consorci Sanitari del Maresme, Gastrointestinal Physiology
36
37 Laboratory, Universitat Autònoma de Barcelona, Mataro, Catalunya, ES. Centro de
38
39 Investigación Biomédica en Red de enfermedades hepáticas y digestivas (CIBERehd),
40
41 Instituto de Salud Carlos III, Barcelona Catalunya, ES.
4243
44
45 4. Clavé Civit, Pere. Consorci Sanitari del Maresme, Gastrointestinal Physiology Laboratory,
46
47 Universitat Autònoma de Barcelona, Mataro, Catalunya, ES. Centro de Investigación
48
49 Biomédica en Red de enfermedades hepáticas y digestivas (CIBERehd), Instituto de
50
51 Salud Carlos III, Barcelona Catalunya, ES.
52
53

WORD COUNT

4528

ABSTRACT

Introduction:

Oropharyngeal dysphagia (OD) is a major disorder following stroke. OD can produce alterations in both the efficacy and safety of deglutition and may result in malnutrition, dehydration, frailty, respiratory infections and pneumonia. These complications can be avoided by early detection and treatment of OD in post-stroke patients and hospital stays, medication and mortality rates can be reduced. In addition to acute in-hospital costs from OD complications, there are other costs related to post-stroke OD such as direct non-healthcare costs or indirect costs. The objective of this systematic review is to assess and summarize literature on the costs related to OD in post-stroke patients.

Methods and analysis:

A systematic review of studies on the cost of OD and its complications (aspiration, malnutrition, dehydration, aspiration pneumonia and death) in stroke patients will be performed from the perspectives of the hospital, the health care system and/or the society. The main outcomes of interest are the costs related to post-stroke OD. We will search MEDLINE, EMBASE and the National Health Service Economic Evaluation Database (NHS EED). Studies will be included if they are partial economic evaluation studies, studies that provide information on costs in adult (>17 years) post-stroke patients with OD and/or its complications (malnutrition, dehydration,

1
2
3
4 frailty, respiratory infections and pneumonia) or economic evaluation studies in which the cost
5
6 of this condition has been estimated. Studies will be excluded if they refer to oesophageal
7
8 dysphagia or OD caused by causes other than stroke. Main study information will be presented
9
10 and summarized in tables, separately for studies that provide incremental costs attributable to
11
12 OD or its complications and studies that report the effect of OD or its complications on total
13
14 costs of stroke, and according to the perspective from which costs were measured.
15
16
17
18

19 **Ethics and dissemination:**

20
21
22 The results of this systematic review will be published in a peer-reviewed journal.
23
24

25 **PROSPERO registration number: CRD42018099977.**

26
27
28 **KEYWORDS**

29
30
31 Oropharyngeal Dysphagia

32
33
34 Deglutition Disorders

35
36
37 Pneumonia, aspiration

38
39
40 Respiratory Aspiration

41
42
43 Malnutrition

44
45
46 Stroke

47
48
49 Stroke Rehabilitation

50
51
52 Cerebral Infarction

53
54
55 Cerebral Hemorrhage

1
2
3
4 Economics

5
6
7 Health Resources

8
9
10 STRENGTHS AND LIMITATIONS OF THIS STUDY

- 11
12
13 1. This systematic review protocol was performed using the PRISMA recommendations.
14
15
16 2. The proposed methodology will allow us to assess the quality of the selected studies.
17
18
19 3. The bibliographic search considers Medline and Embase databases.
20
21
22 4. Unpublished material and abstracts will not be included in this systematic review.
23
24
25 5. Costs are very context-specific so they are difficult to summarize in a single result.
26
27
28
29
30
31
32
33
34
35
36
37
38
39
40
41
42
43
44
45
46
47
48
49
50
51
52
53
54
55
56
57
58
59
60

INTRODUCTION

Oropharyngeal Dysphagia (OD) is a major disorder following stroke with a high incidence in acute post-stroke patients (37-78%).^[1] OD can improve after the first weeks of the stroke, however it persists in as many as 50% of patients.^[2] OD, which is classified in the latest editions of the International Classification of Diseases (ICD-10) promoted by the World Health Organization ^[3], can produce alterations in both the efficacy and the safety of deglutition. Impaired efficacy of swallow causes malnutrition and/or dehydration in up to 25% of patients and impaired safety of swallow may lead to aspiration pneumonia with high mortality rates.^[1,4-5] However, still today, most patients do not receive comprehensive care and post-stroke OD is an underdiagnosed and undertreated condition worldwide. OD is an inexpensive complication to diagnose. For OD diagnosis, well-established methods and tools exist, such as routine screening followed by expert assessment. Position Statements of the European Society for Swallowing Disorders recommend that all stroke patients should be screened for OD with available, easy to use and validated screening tools.^[6] Evidence-based and effective treatment for OD is mainly oriented to compensating swallow impairments through adaptation of fluid viscosity and solid food textures to avoid aspiration and choking, and improving nutritional

1
2
3
4 status and oral health to avoid respiratory infections. Advances in treatment are mainly focused
5
6 on peripheral stimulation strategies and central, noninvasive stimulation strategies. Among
7
8 these methods, transcutaneous and intrapharyngeal electrical stimulation, pharmacological
9
10 stimulation through transient receptor potential channels of the vanilloid subtype (TRPV)
11
12 agonists and non invasive brain stimulation techniques (NIBS), repetitive transcranial magnetic
13
14 stimulation, and transcranial direct current stimulation are emerging treatments for swallow
15
16 dysfunction among post-stroke patients.[7] The aim of these interventions is to restore the
17
18 swallow function.
19
20
21
22
23

24 Screening and treatment of malnutrition and dehydration are also two important challenges for
25
26 these patients in order to avoid complications related with malnutrition such as pressure
27
28 sores.[8] Moreover, screening and promotion of good oral health practices among these
29
30 patients should be implemented to reduce bacterial colonization by respiratory pathogens.[9-
31
32 10]
33
34
35
36

37 Regardless of its etiology, OD has been related to longer length of stay, and higher inpatient
38
39 costs, likelihood of being transferred to post-acute care facility and inpatient mortality during
40
41 hospitalization.[11] Early detection and treatment of OD in post-stroke patients can diminish
42
43 these complications and reduce hospital stays, readmissions, aspiration pneumonia and
44
45 mortality rates, as well as the use of some medication such as antibiotics.[12] Taking into
46
47 account all these secondary complications related to post stroke OD, this condition could have a
48
49 high economic impact on health care costs. The correct treatment of this condition could lead to
50
51 considerable savings in health care costs. In addition to acute in-hospital costs due to OD
52
53
54
55
56
57
58
59
60

1
2
3
4 complications, there are other costs related to post-stroke OD such as rehabilitation care,
5
6 institutionalization, direct non-healthcare costs, and indirect costs due to loss of productivity.
7
8 The chronic nature of OD means medical costs related to patient care outside the acute hospital
9
10 setting must be taken into account. Knowing costs related to this post-stroke disorder can lead
11
12 to a better understanding of its impact. Our hypothesis is that the impact of OD on the health-
13
14 economic and social costs of stroke is high and that minimal care of OD is economically sounder
15
16 than low care of OD. Therefore our aim is to quantify the cost of acute and chronic post-stroke
17
18 OD. It is important to understand the economic burden in order to change clinical practice.
19
20 However, costs associated to acute and chronic OD in stroke patients have been poorly studied
21
22 and are not well known. One study has shown that presenting OD after stroke was associated
23
24 with high mortality rates during hospital stay and was an independent risk factor for prolonged
25
26 length of hospital stay and to be institutionalized after hospital discharge; OD was also an
27
28 independent risk factor for poorer functional capacity and increased risk of mortality 3 months
29
30 after the stroke episode. This study stated these factors were of great importance not only from
31
32 the perspective of patient health, but also because of their social and economic burden.[13] The
33
34 objective of this systematic review is to assess and summarize all the knowledge on the costs
35
36 related to OD in post-stroke patients.
37
38
39
40
41
42
43
44

45 46 METHODS AND ANALYSIS

47
48 A systematic review of studies on the cost of OD and its complications (aspiration, malnutrition,
49
50 dehydration, aspiration pneumonia or death) in stroke patients will be performed from hospital,
51
52
53
54
55
56
57
58
59
60

1
2
3
4 health care system and social perspectives. The main outcome of interest is the costs related to
5
6 post-stroke OD. This systematic review will be performed during 2018.
7

8 9 **PRISMA statement**

10
11 Systematic reviews are fundamental instruments to assess all the evidence related to a topic
12
13 precisely and trustworthily. Nowadays, systematic reviews are key tools in updating the
14
15 knowledge on a certain topic, achieving conclusions on available evidence, and taking decisions
16
17 in the health care environment. Because of this, systematic reviews must follow an exhaustive
18
19 and accurate methodology and need to be reported with clarity and transparency. For this
20
21 reason, we will use the methodology proposed by PRISMA (Preferred Reporting Items for
22
23 Systematic review and Meta-Analyses) to carry out this systematic review.[14] In this protocol,
24
25 PRISMA-P annex (Preferred Reporting Items for Systematic Reviews and Meta-Analysis
26
27 Protocols) has been used. PRISMA-P is a specific PRISMA section to develop protocols. It can be
28
29 used as a guideline to develop protocols for systematic reviews according to PRISMA
30
31 methodology. Moreover, PRISMA-P offers study examples for each item included in the
32
33 protocol. These examples are extracted from studies that have been relevant in their respective
34
35 fields, reported with high quality and carried out using accurate methodology.[15] We need to
36
37 use protocols to increase work quality and reduce to the maximum the risk of bias secondary to
38
39 mistaken internal methodology and inaccurate reporting. Protocols are key tools for developing
40
41 systematic reviews that can lead to reliable results to help in decision-making, improve backup
42
43 for future investigation and serve as a summary of the available evidence on a certain topic. For
44
45 all these reasons, we use PRISMA as a reference in this work.
46
47
48
49
50
51
52
53
54
55
56
57
58
59
60

Literature search

We will search MEDLINE using Pubmed and EMBASE using Ovid. We will search on the National Health Service Economic Evaluation Database (NHS EED) as well using the Center for Reviews and Dissemination Database of the University of York. The Mesh and search terms used in the search strategy and their combination are described in Table 1. Using this search strategy in MEDLINE using Pubmed, a total of seventy articles were found in June 2018. No publication date and no language restrictions will be imposed. Unpublished material and abstracts will not be included in this systematic review.

Selection process

We will analyse all the studies identified through the literature search described in this protocol using a double-phase process: an initial screening phase and a subsequent selection phase where studies will be included according to the review eligibility criteria. The references of the studies included will be checked for additional eligible studies.

In the initial screening phase, the abstract and title of the studies will be analyzed to eliminate studies not containing data on costs in post-stroke OD, its complications (malnutrition, dehydration, frailty, respiratory infections and pneumonia) or relevant data or information. In the abstract or title there must appear an economic term such as “costs” or “resources consumption” and “dysphagia” or “malnutrition, dehydration, frailty, respiratory infections and pneumonia” with “stroke”. This selection process will be done by one sole reviewer and, subsequently, a second reviewer will check the eliminated abstracts.

1
2
3
4 In the second selection phase, studies will be included in the systematic review if they have
5
6 partial economic evaluation, studies that provide information about costs in adult (>17years)
7
8 post-stroke patients with OD and/or its complications (malnutrition, dehydration, frailty,
9
10 respiratory infections and pneumonia) or economic evaluation studies in which the cost of OD
11
12 has been estimated. Studies will be excluded if they are (a) oesophageal dysphagia studies, (b)
13
14 studies not related to OD, (c) studies in which OD is related to a cause other than stroke, (d)
15
16 duplicate publications of the same study or, (e) other causes (explained above). This information
17
18 will be presented in a content table. Full text of selected studies will be carefully assessed
19
20 according to a pre-established data collection notebook. Figure 1 summarizes the selection
21
22 process. Two independent reviewers will participate in this selection process. In case of
23
24 disagreement over one or more studies, a third reviewer will review the study and a final
25
26 consensus will be made. The reason for excluding the study will be recorded. No restrictions
27
28 related to the size of the sample will be imposed.
29
30
31
32
33
34
35

36 **Data collection**

37
38
39 Two reviewers will extract data from the selected studies and will register it in a standard data
40
41 collection form. In case of disagreement between them, a third reviewer opinion will be
42
43 required to reach an agreement and to take a final consensus decision. If necessary, we will
44
45 contact authors of included studies in order to ask for unreported information or to clarify
46
47 possible misunderstandings. Data directly obtained from the authors will be clearly identified.
48
49 We will report any assumption resulting from lost or unavailable information. To manage study
50
51 data, we will transfer all information in the data collection form to a spreadsheet. Data
52
53
54
55
56
57
58
59
60

1
2
3
4 gathering will refer to main study characteristics, quality assessment and study results. The
5
6 information to be obtained from each study is presented below:
7
8

9
10 a. Study identification: First author, journal of publication, and year of publication.
11

12
13 b. Main design characteristics: type of study (cost of illness study or another type of study that
14 provides cost of illness information in this field); epidemiological approach (cross-sectional or
15 longitudinal); retrospective or prospective data gathering; perspective of the analysis (hospital,
16 patient, health care system, societal or insurance carrier perspective); time horizon; use of
17 temporary discount rate; sensitivity analysis (yes/no); presence of a control group (patients not
18 affected by OD); location/setting.
19
20
21
22
23
24
25
26

27
28 c. Study sample characteristics: sample size; socio-demographic data (age, average and range;
29 gender); patient inclusion and exclusion criteria; patient's functional capacity (RANKIN, Barthel);
30 patient's comorbidities (Charlson); stroke type (ischemic or haemorrhagic); NIHSS scale and/or
31 Canadian Neurologic Scale on admission and on discharge; fibrinolysis treatment (yes/no);
32 endovascular treatment (yes/no); method used to diagnose OD (videofluoroscopy (VFS),
33 fiberoptic endoscopic evaluation of swallowing (FEES), volume-viscosity swallowing test (V-VST),
34 or other bedside methods); nutritional assessment; discharge destination (rehabilitation ward,
35 nursing home, domicile).
36
37
38
39
40
41
42
43
44
45
46

47
48 d. Elements of cost considered: Direct healthcare costs (hospital ward, intensive care unit,
49 emergency room, institutionalization in a nursing home, primary care visits and to nutritionists,
50 physical therapists, speech therapists, ambulance, medication, diagnostic tests, special diets,
51 tube-feeding, PEG-insertion, antibiotic consumption, pneumonia-related costs, etc.), direct non-
52
53
54
55
56
57
58
59
60

1
2
3
4 health care costs (social services and transportation costs), and indirect costs (loss of
5
6 productivity).

7
8
9 e. Data source: medical registries, MEDICARE databases, national patient databases, insurance
10
11 databases, data collected from individual research groups, data collected from individual
12
13 hospitals.

14
15
16 f. Study results: The primary outcome will be the costs related to OD in post-stroke patients
17
18 reported in monetary units (euros). If the studies provide specific breakdown of costs, we will
19
20 report this information (direct hospital costs, rehabilitation care costs, direct non-healthcare
21
22 costs, indirect costs and productivity loss, and intangible costs). We will also collect data on
23
24 quantities of health and social resource consumption, currencies used and whether the study
25
26 shows total or incremental costs. Whenever possible, the cost adjusted for the severity of the
27
28 stroke (-e.g. based on NIHSS or Canadian scale) or other confounding factors will be considered.
29
30
31

32 33 **Quality assessment, risk of bias in individual studies, meta bias and confidence in cumulative** 34 35 **evidence**

36
37 Methodological quality and risk of bias and meta bias will be evaluated using Drummond's
38
39 checklist for assessing economic evaluations.[16] This checklist provides a set of items
40
41 applicable to a critical appraisal of health economic evaluation studies and includes the
42
43 following three domains: study design, data collection and analysis and interpretation of results.
44
45 Each checklist domain has different sections; there are 10 sections containing questions on the
46
47 study and every section will be rated as "Yes/partly/no". A fourth option as "not available/not
48
49 applicable" has been added since not all sections are adapted to studies like cost of illness
50
51
52
53
54
55
56
57
58
59
60

1
2
3
4 studies. Drummond's original list consists of 35 points but we have adapted it and will only use
5
6 the 25 points applicable to cost studies. We will give a global score for the quality of each study
7
8 which we calculate dividing the total number of points rated as "yes" between the total points
9
10 applicable for each study, and record it as a percentage.
11
12

13
14 We will assess confidence and strength of evidence in this systematic review using GRADE
15
16 (Grading of Recommendations Assessment, Development and Evaluation) methodology.[17]
17
18 GRADE is a tool designed to assess the strength of the summarized evidence across studies in
19
20 systematic reviews by evaluating both study limitations, imprecision, inconsistency of results,
21
22 indirectness of evidence, publication bias, magnitude of the effect and the presence of
23
24 confounders that minimize the effect. Finally, we will rate the strength of evidence across
25
26 studies as high, moderate, low or very low and we will make an evidence profile with a detailed
27
28 quality assessment.
29
30
31
32
33
34
35

36 **Data synthesis**

37
38 A systematic meta-narrative synthesis will be made, so, we will present the results in narrative
39
40 form. Findings and characteristics of the included studies will be summarized and explained in
41
42 text and tables. We will present results in the text following this order: (i) data on costs related
43
44 to post-stroke OD, (ii) data on costs related to OD complications in this order: (a) aspiration, (b)
45
46 malnutrition, (c) dehydration, (d) aspiration pneumonia and (e) death. Data will be presented
47
48 separately for those studies that provide incremental costs attributable to OD or its
49
50 complications from those studies that report the effect of OD or its complications on total costs
51
52
53
54
55
56
57
58
59
60

1
2
3
4 of stroke, and according to the perspective in which costs are measured (hospital, patient,
5
6 healthcare system, societal, or insurance carrier). Main study information will be presented and
7
8 summarized in several tables of evidence. This presentation will be performed separately in the
9
10 same way as in tables. No conversion of study data will be performed and all data will be
11
12 reported in the original format during the initial presentation of the results. One set of tables of
13
14 evidence will present main designs and sample characteristics as well as cost elements
15
16 considered and data source. Another set of tables will report data on main results and quality
17
18 assessment.
19
20
21
22

23
24 A weighted mean cost of post-stroke OD will be estimated for those studies with the same
25
26 perspective and time horizon and with similar design characteristics. Mean cost will be weighted
27
28 by sample size. No other quantitative methods of synthesizing data will be performed.
29
30 Moreover, evidence obtained from studies will be synthesized through a qualitative synthesis
31
32 method, using a meta-narrative method. In this section, we will take into account the risk of bias
33
34 information obtained from each study. No study will be eliminated based on its risk of bias, but
35
36 we will assess how risk of bias can affect the main results and outcome measures. To present
37
38 this data synthesis of results correctly, we will follow the recommendations stated in the
39
40 guidance from the Centre for Reviews and Dissemination.[18]
41
42
43
44

45 46 **Glossary of terms in health economics:**

47
48
49 -Economic evaluation in healthcare: analytical methodology that aims to compare the costs and
50
51 the consequences in health of various alternatives (interventions, treatments, programmes,
52
53 etc.).
54
55
56
57
58
59
60

1
2
3
4 -Partial economic evaluation: economic evaluation technique that only compares the costs of
5
6 the various alternatives studied but does not consider their effects on health. Also called cost
7
8 analysis.
9

10
11 - Analysis perspective: point of view from which the analysis is focused and which determines
12
13 the cost elements to consider. Each perspective provides specific information for a particular
14
15 entity, e.g. hospital perspective mainly includes acute in-hospital costs while healthcare system
16
17 perspective includes costs related to those medical costs beyond the acute in-hospital stay. The
18
19 societal perspective is the most complete because it includes healthcare and non-healthcare
20
21 costs and loss of productivity.
22
23
24
25

26
27 - Type of costs: cost studies classify costs as direct costs, indirect costs and intangible costs.
28

- 29
30 • Direct medical costs are those related to a healthcare intervention (e.g. hospital ward or
31
32 medication) and direct non-medical costs are those associated with provision of medical
33
34 services (e.g. transportation costs).
35
36
- 37 • Indirect costs are those related to productivity loss, morbidity, mortality or time spent.
38
- 39 • Intangible costs are rarely studied and are those related to suffering and pain related to
40
41 a disease or treatment.
42
43
44

45 -Discount rate: There is a preference to obtain benefits straight away and to delay costs. When
46
47 the time horizon is longer than one year, a temporary discount rate should be used to allow
48
49 costs and results that will occur over time to be measured at present values. An annual 3-5%
50
51 discount rate is usually used.
52
53
54
55
56
57
58
59
60

1
2
3
4 -Sensitivity analysis: Some decisions in the economic analysis are based on uncertain data. The
5
6 sensitivity analysis is aimed at testing the robustness of results of the economic evaluation when
7
8 changing the assumed values of some variables used in the analysis. [14, 19]
9
10

11 12 13 14 PATIENT AND PUBLIC INVOLVEMENT STATEMENT:

15
16 There was no public or patient involvement in the elaboration of this protocol.
17
18

19 20 21 ETHICS AND DISSEMINATION

22
23
24 The results of this systematic review will be published in a peer-reviewed journal. This
25
26 systematic review is the first part of a research project aiming to evaluate the health economic
27
28 and social costs of OD in stroke patients to better understand and raise awareness on minimal
29
30 care for this common and severe complication. Complications of OD are related to three main
31
32 aspects: a) impaired safety of swallow, causing the aspiration of respiratory pathogens to the
33
34 airway; b) impaired nutritional status, leading to malnutrition, impaired immunity and frailty;
35
36 and c) poor oral health and hygiene, associated with oral colonization by respiratory pathogens.
37
38 It is necessary to treat these three aspects simultaneously with the aim of maximizing the
39
40 number of patients treated with simple and cost-effective measures based on the best scientific
41
42 evidence. This minimal and massive intervention is based on fluid and food texture adaptations,
43
44 nutritional supplementation and oral hygiene.[20] The full extent of this project will include a) a
45
46 systematic review of the literature on the cost of OD after stroke; b) a systematic review of the
47
48 literature on full economic evaluations of interventions related to OD; c) a health economic
49
50
51
52
53
54
55
56
57
58
59
60

1
2
3
4 analysis of a study on the prevalence and evolution of OD in patients with stroke (with one year
5 follow-up) to assess the cost of OD; and d) a study on the cost-effectiveness of compensatory
6 vs. active interventions (those treatments for OD that aim to restore the impaired swallow
7 function) to improve swallowing function in these patients. OD treatment is moving from
8 compensatory strategies towards promoting brain plasticity, both to recover swallow function
9 and to improve brain-related swallowing dysfunction.[7]
10
11
12
13
14
15
16
17
18
19
20
21

22 AUTHORS' CONTRIBUTION

23
24
25 Marin Rubio, Sergio is the guarantor. He drafted the first version of this manuscript. He
26 provided expertise on health economics. He contributed to the development of the introduction
27 (rationales and objectives), the eligibility criteria, the selection of the information sources, the
28 search strategy, the selection process, the quality assessment, the data extraction criteria and
29 the data synthesis. He read and approval the final revision of this protocol.
30
31
32
33
34
35
36
37

38 Serra Prat, Mateu provided expertise on investigation methodology and health economics. He
39 provided important references for the development of the methodology of this work. He
40 reviewed and made contributions on the methodology of all the sections of this protocol. He
41 reviewed the correct use of all the economic terms included in this manuscript. He collaborated
42 in writing the manuscript.
43
44
45
46
47
48
49

50
51 Ortega Fernandez, Omar provided expertise on post-stroke OD treatments and interventions.
52 He contributed on the development of the data collection, quality assessment and data
53
54
55
56
57
58
59
60

1
2
3
4 synthesis sections. He provided a critical revision of all the sections of this protocol. He
5
6 collaborated in writing the manuscript. He collaborated in writing the manuscript.
7
8

9
10 Clavé Civit, Pere provided expertise on post-stroke OD. He reviewed the correct use of all the
11
12 medical terms included in this manuscript. He contributed on the development and writing of
13
14 the introduction. He provided a critical revision of all the sections of this protocol. He
15
16 contributed to the correct following of the recommendations proposed by PRISMA.
17
18

19
20 All authors provided a critical revision and read and approval the final revision of this protocol.
21
22

23 ACKNOWLEDGMENTS

24
25 We would like to thank Agustí Viladot, member of Mataró Hospital library service, for helping
26
27 with search strategy and Jane Lewis for reviewing the English. This work has been conducted
28
29 within the framework of a doctoral thesis in medicine from the Medicine Department of the
30
31 Autonomous University of Barcelona.
32
33

34 FUNDING STATEMENT

35
36 This study is funded by an educational grant from Nutricia Advanced Medical Nutrition. This
37
38 study is supported by Fundació Salut del Consorci Sanitari del Maresme, Ciberehd (in turn
39
40 supported by the Instituto de Salud Carlos III, Barcelona, Spain) and Fundació de Recerca en
41
42 Gastroenterologia (FUREGA). The sponsor has no role in the development of this study.
43
44
45
46
47
48
49

50 COMPETING INTERESTS STATEMENT

51
52 The authors affirm that there are no conflicts of interest.
53
54
55
56
57
58
59
60

FULL REFERENCES

1 Martino R, Foley N, Bhogal S, et al. Dysphagia After Stroke: Incidence, Diagnosis, and Pulmonary
2 Complications. *Stroke* 2005;36:2756-2763.

3 Mann G, Hankey GJ, Cameron D. Swallowing function after stroke: prognosis and prognostic
4 factors at 6 months. *Stroke* 1999;30(4):744-8.

5 WHO, International classification of disease [online], URL:[<http://www.who.int/classifications/icd/en>] [Date accessed: February 2018].

6 Clavé P, de Kraa M, Arreola V, et al. The effect of bolus viscosity on swallowing function in
7 neurogenic dysphagia. *Aliment Pharmacol Ther* 2006;24(9):1385-94.

8 Cook IJ, Kahrilas PJ. AGA technical review on management of oropharyngeal dysphagia.
9 *Gastroenterology* 1999;116(2):455-78.

10 Schepp SK, Tirschwell DL, Miller RM, et al. Swallowing screens after acute stroke: a systematic
11 review. *Stroke* 2012;43(3):869-71.

12 Cabib C, Ortega O, Kumru H, et al. Neurorehabilitation strategies for poststroke oropharyngeal
13 dysphagia: from compensation to the recovery of swallowing function. *Ann N Y Acad Sci*
14 2016;1380(1):121-138.

15 Geeganage C, Beavan J, Ellender S, Bath PM. Interventions for dysphagia and nutritional

1
2
3
4 support in acute and subacute stroke. *Cochrane Database Syst Rev* 2012;10:CD000323.

5
6
7 9 van der Maarel-Wierink CD, Vanobbergen JN, Bronkhorst EM, et al. Oral health care and
8
9 aspiration pneumonia in frail older people: a systematic literature review. *Gerodontology*
10
11 2013;30(1):3-9.

12
13
14 10 Seedat J, Penn C. Implementing oral care to reduce aspiration pneumonia amongst patients
15
16 with dysphagia in a South African setting. *S Afr J Commun Disord* 2016;63(1).

17
18
19 11 Patel DA, Krishnaswami S, Steger E, et al. Economic and survival burden of dysphagia among
20
21 inpatients in the United States. *Dis Esophagus* 2018;31(1):1-7.

22
23
24 12 Ickenstein GW, Riecker A, Höhlig C, et al. Pneumonia and in-hospital mortality in the context
25
26 of neurogenic oropharyngeal dysphagia (NOD) in stroke and a new NOD step-wise concept. *J*
27
28 *Neurol* 2010;257(9):1492-9.

29
30
31 13 Rofes L, Muriana D, Palomeras E, et al. Prevalence, risk factors and complications of
32
33 oropharyngeal dysphagia in stroke patients: A cohort study. *Neurogastroenterol Motil.*
34
35 2018;23:e13338.

36
37
38 14 Liberati A, Altman DG, Tetzlaff J, et al. The PRISMA Statement for Reporting Systematic
39
40 Reviews and Meta-Analyses of Studies That Evaluate Health Care Interventions: Explanation and
41
42 Elaboration. *BMJ* 2009;339:b2700.

43
44
45 15 Shamseer L, Moher D, Clarke M, et al. Preferred reporting items for systematic review and
46
47 meta-analysis protocols (PRISMA-P) 2015: elaboration and explanation. *BMJ* 2015;350:g7647.

48
49
50 16 Drummond MF, O'Brien B, Torrance GW, et al. *Methods for the economic evaluation of*
51
52 *health care programmes*. 2nd ed. Oxford. Oxford University Press 1997.

1
2
3
4 17 Guyatt G, Oxman AD, Akl EA, et al. GRADE guidelines: 1. Introduction-GRADE evidence
5 profiles and summary of findings tables. J Clin Epidemiol 2011;64(4):383-94.
6
7
8

9
10 18 Centre for Reviews and Dissemination. Systematic Reviews: CRD's Guidance for Undertaking
11 Reviews in Health Care. York: Centre for Reviews and Dissemination, University of York 2009.
12
13
14

15
16 19 Jo C. Cost-of-illness studies: concepts, scopes, and methods. Clin Mol Hepatol
17 2014;20(4):327-37.
18
19
20

21 20 Martín A, Ortega O, Roca M, Arús M, Clavé P. Effect of A Minimal-Massive Intervention in
22 Hospitalized Older Patients with Oropharyngeal Dysphagia: A Proof of Concept Study. J Nutr
23 Health Aging 2018;22(6):739-747.
24
25
26
27
28
29
30
31
32
33
34
35
36
37
38
39
40
41
42
43
44
45
46
47
48
49
50
51
52
53
54
55
56
57
58
59
60

Table 1: Search terms and MeSH terms used in the bibliographic search

Terms related to Oropharyngeal Dysphagia and connected among themselves by "OR"	Terms related to Stroke and connected among themselves by "OR"	Terms related to Health Economics and connected among themselves by "OR"
1.Oropharyngeal Dysphagia.tw. 2.Dysphag* 3.Dysphagia therapy/ 4."Deglutition"[Mesh] 5.Deglutition Disorders"[Mesh] 6."Oropharynx/abnormalities"[Mesh] 7."Oropharynx/diagnosis"[Mesh] 8."Oropharynx/diagnostic imaging"[Mesh] 9."Oropharynx/pathology"[Mesh] 10."Oropharynx/pharmacology"[Mesh] 11."Oropharynx/physiopathology"[Mesh] 12."Oropharynx/therapy"[Mesh] 13."Pneumonia, aspiration"[Mesh] 14."Respiratory Aspiration"[Mesh] 15."Pneumonia/etiology"[Mesh] 16."Pneumonia/prevention and	21."Stroke"[Mesh] 22.Stroke discharge/ 23.Post-stroke/ 24."Stroke Rehabilitation" [Mesh] 25."Brain Ischemia/ complications"[Mesh] 26."Cerebral Infarction"[Mesh] 27."Cerebral Hemorrhage"[Mesh]	28."Economics"[Mesh] 29."Economics" [Subheading] 30."Models, Economic"[Mesh] 31.Cost effective* 32.Cost[WORD] 33.Costs[WORD] 34."Health Resources"[Mesh] 35."Tertiary Care Centers/economics"[Mesh] 36."Hospitalization/economics"[Mesh] 37."Rehabilitation Centers/economics"[Mesh] 38."Physical Therapy Modalities/economics"[Mesh] 39."Length of Stay/economics"[Mesh] 40."Medicare/economics"

control"[Mesh]		[Mesh]
17."Nutritional Status"[Mesh]		41."Emergency Medical Services/economics"
18."Nutrition Assessment"[Mesh]		[Mesh]
19."Malnutrition"[Mesh]		42."Food, Formulated/economics"[Mesh]
20.Enteral Nutrition*		43."Cerebrovascular Disorders/economics"[Mesh]

Terms, detailed in the three columns above, related to Oropharyngeal Dysphagia, Stroke and Health Economics will be connected using "AND".

1
2
3
4
5
6
7
8
9
10
11
12
13 **Figure 1. Selection process flow diagram**
14
15
16
17
18
19
20
21
22
23
24
25
26
27
28
29
30
31
32
33
34
35
36
37
38
39
40
41
42
43
44
45
46
47
48
49
50
51
52
53
54
55
56
57
58
59
60

1
2
3
4
5
6
7
8
9
10
11
12
13
14
15
16
17
18
19
20
21
22
23
24
25
26
27
28
29
30
31
32
33
34
35
36
37
38
39
40
41
42
43
44
45
46
47
48
49
50
51
52
53
54
55
56
57
58
59
60

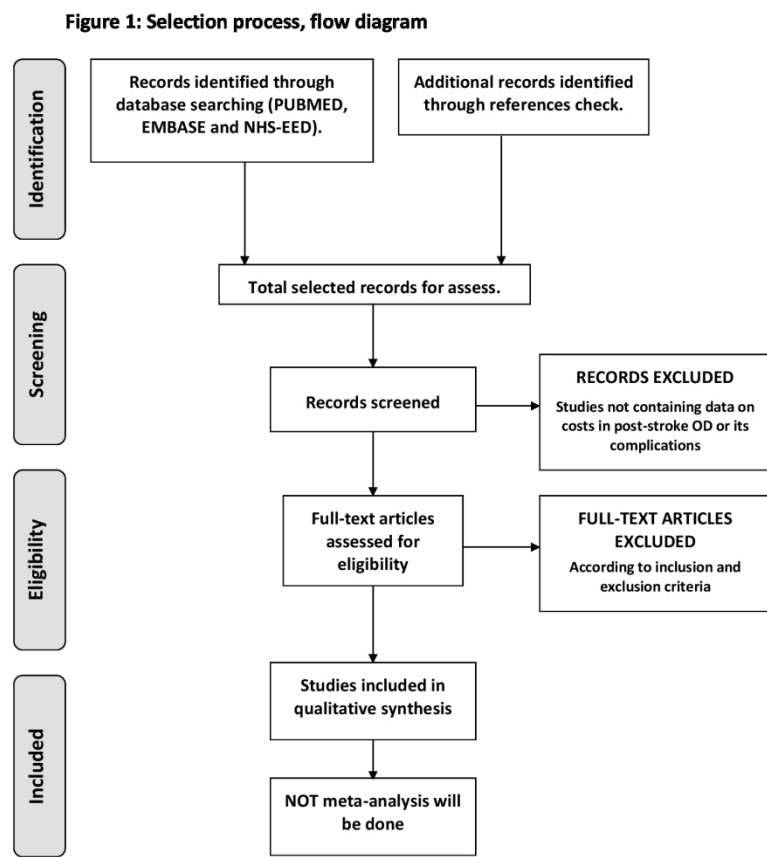


Figure 1. Selection process flow diagram
209x297mm (200 x 200 DPI)