

Supplemental Table S1 Lymphoma classification according to ICD-O-3/WHO 2008

Site Group (Topographic code C00.0-C80.9)	Grade	ICD-O-3 (Topography)	ICD-O-3 (Type)	Histology
<b>1 Hodgkin Lymphoma</b>				
<i>1(a) Classical Hodgkin lymphoma</i>				
1(a)1 Lymphocyte-rich/mixed cellularity/lymphocyte depleted				
1(a)1.1 Lymphocyte-rich	0-9	C000-C809	9651	
1(a)1.2 Mixed cellularity	0-9	C000-C809	9652	
1(a)1.3 Lymphocyte-depleted	0-9	C000-C809	9653-9655	
1(a)2 Nodular sclerosis	0-9	C000-C809	9663-9667	
1(a)3 Classical Hodgkin lymphoma, NOS	0-9	C000-C809	9650, 9661-9662	
<i>1(b) Nodular lymphocyte predominant Hodgkin lymphoma</i>	0-9	C000-C809	9659	
<b>2 Non-Hodgkin lymphoma</b>				
<i>2(a) Non-Hodgkin lymphoma, B-cell</i>				
2(a)1 Precursor Non-Hodgkin lymphoma, B-cell	0-9	C000-C809	9728, 9836	9811-9818,
	6	C000-C809	9727, 9835	
2(a)2 Mature Non-Hodgkin lymphoma, B-cell				
2(a)2.1 Chronic/Small/Prolymphocytic/Mantle B-cell NHL				
2(a)2.1.1 Chronic/Small lymphocytic leuk/lymph	0-9	C000-C809	9670, 9823	
2(a)2.1.2 Prolymphocytic leukemia, B-cell	0-9	C000-C809	9833	
	6	C000-C809	9832	
2(a)2.1.3 Mantle-cell lymphoma	0-9	C000-C809	9673	
2(a)2.2 Lymphoplasmacytic lymphoma/Waldenstrom				
2(a)2.2.1 Lymphoplasmacytic lymphoma	0-9	C000-C809	9671	
2(a)2.2.2 Waldenstrom macroglobulinemia	0-9	C000-C809	9761	
2(a)2.3 Diffuse large B-cell lymphoma (DLBCL)				
2(a)2.3.1 DLBCL, NOS	0-9	C000-C498, C500-C809	9680, 9738	9688, 9737-
	6	C000-C809	9684	
2(a)2.3.2 Intravascular large B-cell lymphoma	0-9	C499	9680, 9738	9688, 9737-

	0-9	C000-C809	9712
2(a)2.3.3 Primary effusion lymphoma	0-9	C000-C809	9678
2(a)2.3.4 Mediastinal large B-cell lymphoma	0-9	C000-C809	9679
2(a)2.4 Burkitt lymphoma/leukemia	0-9	C000-C809	9687, 9826
2(a)2.5 Marginal-zone lymphoma (MZL)			
2(a)2.5.1 Splenic MZL	0-9	C000-C809	9689
2(a)2.5.2 Extranodal MZL, MALT type	0-9	C000-C769, C780-C809	9699
	0-9	C000-C809	9760, 9764
2(a)2.5.3 Nodal MZL	0-9	C770-C779	9699
2(a)2.6 Follicular lymphoma	0-9	C000-C809	9690-9691, 9695, 9698
2(a)2.7 Hairy-cell leukemia	0-9	C000-C809	9940
2(a)2.8 Plasma cell neoplasms			
2(a)2.8.1 Plasmacytoma	0-9	C000-C809	9731, 9734
2(a)2.8.2 Multiple myeloma/plasma-cell leuk.	0-9	C000-C809	9732-9733
2(a)2.9 Heavy chain disease	0-9	C000-C809	9762
2(a)3 Non-Hodgkin lymphoma, B-cell, NOS	6	C000-C809	9591, 9675, 9735
2(b) <i>Non-Hodgkin lymphoma, T-cell</i>			
2(b)1 Precursor Non-Hodgkin lymphoma, T-cell	0-9	C000-C809	9729
	5, 7, 8	C000-C809	9727, 9835
2(b)2 Mature Non-Hodgkin lymphoma, T-cell			
2(b)2.1 Mycosis fungoides/Sezary syndrome			
2(b)2.1.1 Mycosis fungoides	0-9	C000-C809	9700
2(b)2.1.2 Sezary syndrome	0-9	C000-C809	9701
2(b)2.2 Peripheral T-cell lymphoma			
2(b)2.2.1 Peripheral T-cell lymphoma, NOS	0-9	C000-C809	9702
	5, 7, 8	C000-C809	9675
2(b)2.2.2 Angioimmunoblastic T-cell lymphoma	0-9	C000-C809	9705
2(b)2.2.3 Subcutaneous panniculitis-like T-cell lymphoma	0-9	C000-C809	9708
2(b)2.2.4 Anaplastic large cell lymphoma, T- or Null-cell	0-9	C000-C809	9714
2(b)2.2.5 Hepatosplenic T-cell lymphoma	0-9	C000-C809	9716
2(b)2.2.6 Enteropathy-type T-cell lymphoma	0-9	C000-C809	9717

---

2(b)2.2.7 Cutaneous T-cell lymphoma, NOS	0-9	C000-C809	9709, 9726
2(b)2.2.8 Primary cutaneous anaplastic large cell lymphoma	0-9	C000-C809	9718
2(b)2.3 Adult T-cell leukemia/lymphoma	0-9	C000-C809	9827, 9837
2(b)2.4 NK/T-cell lymph., nasal-type/aggressive NK leuk.	0-9	C000-C809	9719, 9948
2(b)2.5 T-cell large granular lymphocytic leukemia	0-9	C000-C809	9831
2(b)2.6 Prolymphocytic leukemia, T-cell	0-9	C000-C809	9834
	5, 7, 8	C000-C809	9832
2(b)3 Non-Hodgkin lymphoma, NOS, T-cell	5, 7, 8	C000-C809	9591, 9684
<i>2(c) Non-Hodgkin lymphoma, unknown lineage</i>			
2(c)1 Precursor lymphoblastic leuk/lymph, unknown lineage	1-4, 9	C000-C809	9727, 9835
2(c)2 Prolymphocytic leukemia, unknown lineage	1-4, 9	C000-C809	9832
2(c)3 Non-Hodgkin lymphoma, NOS, unknown lineage	1-4, 9	C000-C809	9591, 9597, 9675, 9684
3 Composite Hodgkin lymphoma and NHL	0-9	C000-C809	9596
4 Lymphoid neoplasm, NOS	0-9	C000-C809	9590, 9594, 9724- 9725, 9820, 9970- 9971

---

Supplemental Table S2 ICD Codes for Lymphoma as Cause of Death

Lymphoma classification	ICD10	ICD8/9
HL	C81	201
NHL	C82-C85, C96.3	200, 202.0-202.2, 202.8-202.9

Supplement Table S3 Relative Excess Risk and 95% CI (reference: 1984-1993) for Age-Standardized Relative Survival

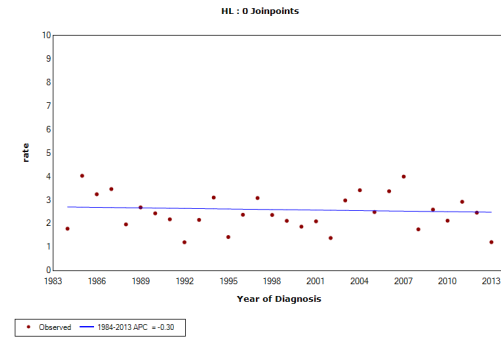
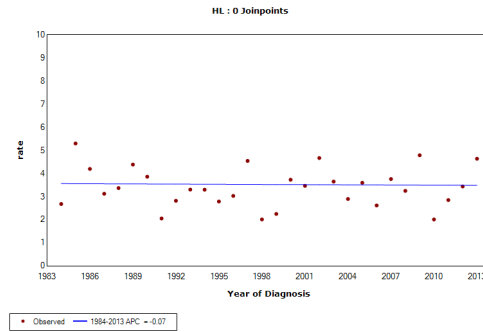
Lymphoma classification	Gender	1994-2003	2004-2013
HL	Male	0.65 (0.38 – 1.11)	0.55 (0.31 – 0.95)
	Female	0.64 (0.30 - 1.32)	0.70 (0.36 – 1.40)
	Total	0.63 (0.41 – 0.96)	0.61 (0.40 - 0.93)
NHL	Male	0.97 (0.86 – 1.08)	0.71 (0.63 – 0.79)
	Female	1.05 (0.89 – 1.24)	0.84 (0.71 – 0.99)
	Total	0.99 (0.90 – 1.09)	0.75 (0.69 – 0.83)
CLL/SLL	Male	0.76 (0.57 – 1.01)	0.55 (0.41 – 0.74)
	Female	--	--
	Total	0.61 (0.46 – 0.82)	0.40 (0.29 – 0.55)
DLBCL	Male	0.89 (0.70 – 1.15)	0.69 (0.55 – 0.88)
	Female	1.10 (0.82 – 1.50)	0.74 (0.55 – 1.01)
	Total	0.98 (0.81 – 1.18)	0.71 (0.59 – 0.85)
FL	Male	0.82 (0.58 – 1.17)	0.35 (0.22 – 0.52)
	Female	1.59 (0.93 – 3.03)	0.60 (0.29 – 1.25)
	Total	1.02 (0.76 – 1.39)	0.42 (0.29 – 0.61)
PCN	Male	1.00 (0.83 – 1.22)	0.80 (0.66 – 0.97)
	Female	1.07 (0.83 – 1.38)	1.09 (0.85 – 1.39)
	Total	1.03 (0.89 – 1.20)	0.91 (0.78 – 1.06)

Supplement Figure S1 Time trends in lymphoma age-standardized incidence rates in MB, Canada

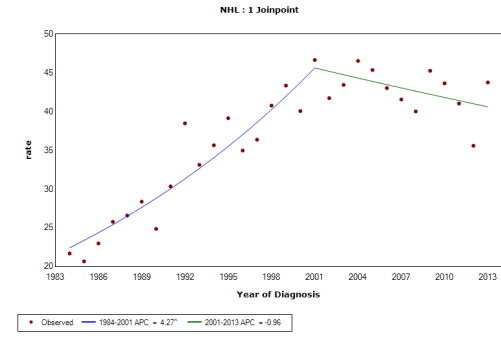
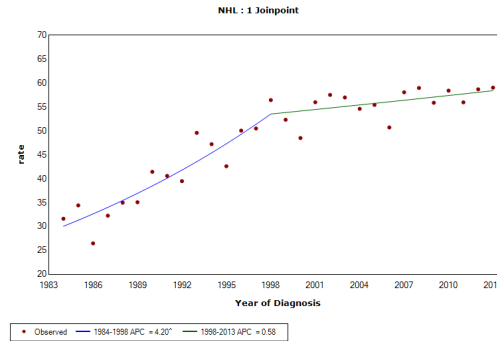
Male

Female

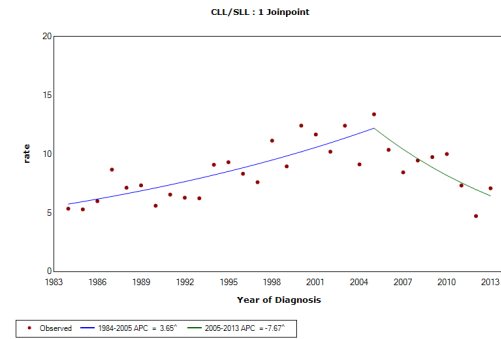
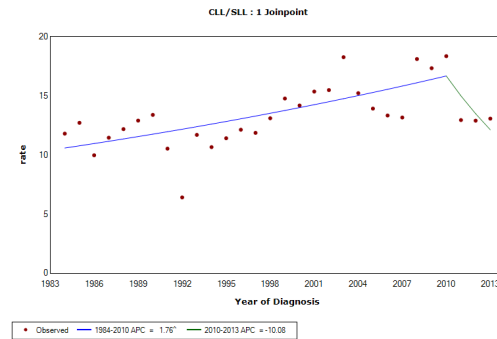
HL



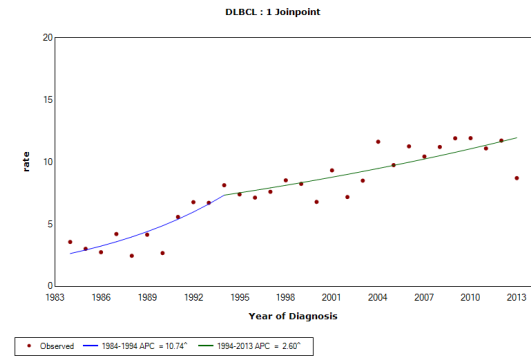
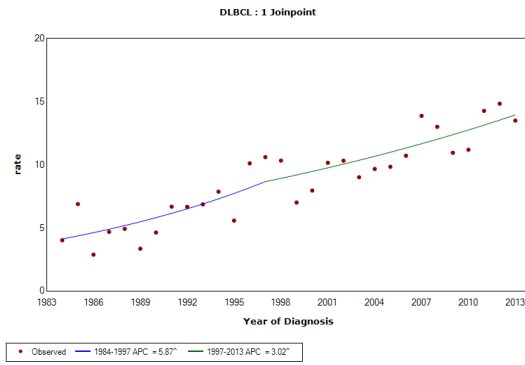
NHL



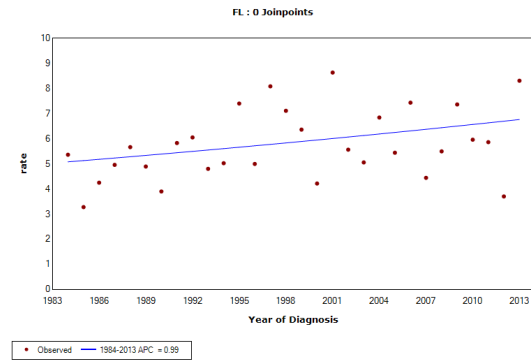
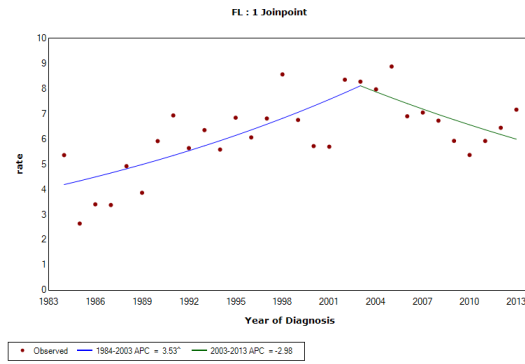
CLL/SLL



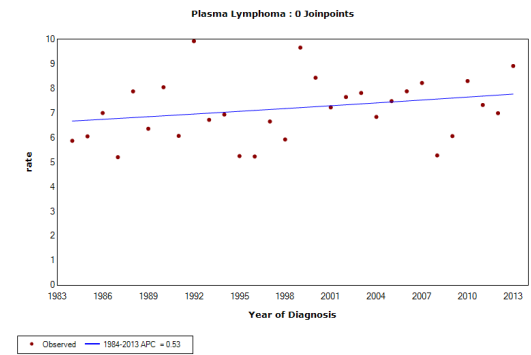
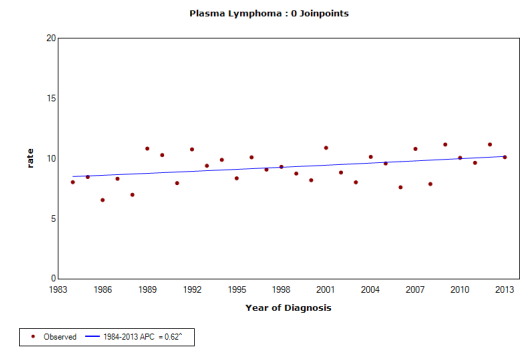
DLBCL



FL



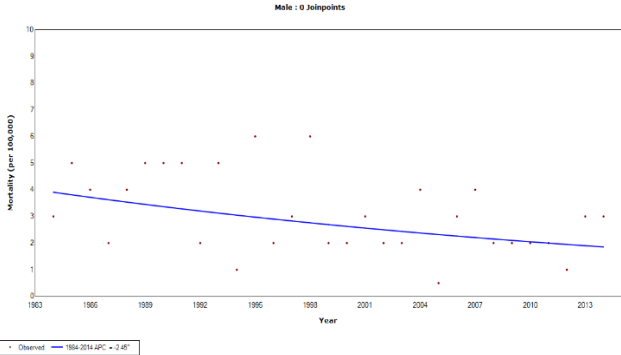
FCN



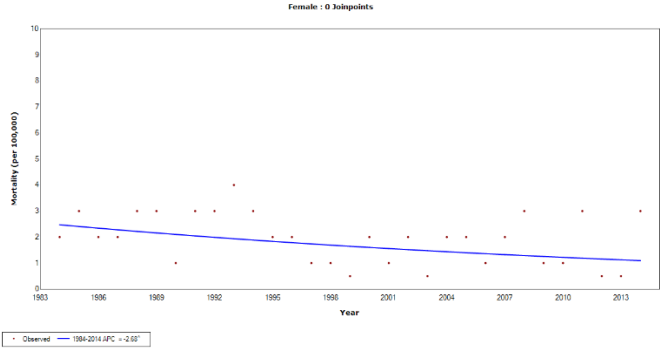
Supplement Figure S2 Time trends in lymphoma age-standardized mortality rates in MB, Canada

HL

Male

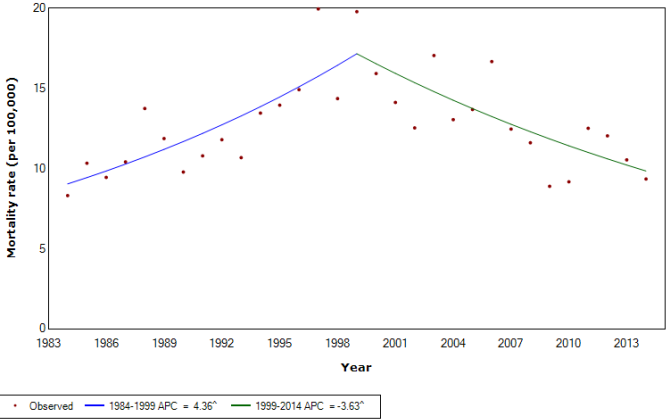


Female



NHL

Male : 1 Joinspoint



Female : 1 Joinspoint

