

# BMJ Open Non-withdrawal of beta blockers in acute decompensated chronic and de novo heart failure with reduced ejection fraction in a prospective multicentre study of patients with acute heart failure in the Middle East

Charbel Abi Khalil,<sup>1,2,3</sup> Kadhim Sulaiman,<sup>4</sup> Ziyad Mahfoud,<sup>5</sup> Rajvir Singh,<sup>3</sup> Nidal Asaad,<sup>3</sup> Khalid F AlHabib,<sup>6</sup> Alawi Alsheikh-Ali,<sup>7</sup> Mohammed Al-Jarallah,<sup>8</sup> Bassam Bulbanat,<sup>9</sup> Wael AlMahmeed,<sup>10</sup> Mustafa Ridha,<sup>11</sup> Nooshin Bazargani,<sup>12</sup> Haitham Amin,<sup>13</sup> Ahmed Al-Motarreb,<sup>14</sup> Husam Al Faleh,<sup>6</sup> Abdelfatah Elasar,<sup>15</sup> Prashanth Panduranga,<sup>4</sup> Jassim Al Suwaidi,<sup>3</sup> on behalf of the GULF-CARE group

**To cite:** Abi Khalil C, Sulaiman K, Mahfoud Z, *et al*. Non-withdrawal of beta blockers in acute decompensated chronic and de novo heart failure with reduced ejection fraction in a prospective multicentre study of patients with acute heart failure in the Middle East. *BMJ Open* 2017;**7**:e014915. doi:10.1136/bmjopen-2016-014915

► Prepublication history and additional material are available. To view these files, please visit the journal online (<http://dx.doi.org/10.1136/bmjopen-2016-014915>).

Received 28 October 2016  
Accepted 17 May 2017



CrossMark

For numbered affiliations see end of article.

#### Correspondence to

Dr. Charbel Abi Khalil;  
cha2022@med.cornell.edu

## ABSTRACT

**Objectives** Beta blockers reduce mortality in heart failure (HF). However, it is not clear whether they should be temporarily withdrawn during acute HF.

**Design** Analysis of prospectively collected data.

**Setting** The Gulf aCute heArt failuRe rEgistry is a prospective multicentre study of patients hospitalised with acute HF in seven Middle Eastern countries.

**Participants** 5005 patients with acute HF.

**Outcome measures** We studied the effect of beta blockers non-withdrawal on intrahospital, 3-month and 12-month mortality and rehospitalisation for HF in patients with acute decompensated chronic heart failure (ADCHF) and acute de novo heart failure (ADNHF) and a left ventricular ejection fraction (LVEF) <40%.

**Results** 44.1% of patients were already on beta blockers on inclusion. Among those, 57.8% had an LVEF <40%. Further, 79.9% were diagnosed with ADCHF and 20.4% with ADNHF. Mean age was 61 (SD 13.9) in the ADCHF group and 59.8 (SD 13.8) in the ADNHF group. Intrahospital mortality was lower in patients whose beta blocker therapy was not withdrawn in both the ADCHF and ADNHF groups. This protective effect persisted after multivariate analysis (OR 0.05, 95% CI 0.022 to 0.112; OR 0.018, 95% CI 0.003 to 0.122, respectively,  $p < 0.001$  for both) and propensity score matching even after correcting for variables that remained significant in the new model (OR 0.084, 95% CI 0.015 to 0.468,  $p = 0.005$ ; OR 0.047, 95% CI 0.013 to 0.169,  $p < 0.001$ , respectively). At 3 months, mortality was still lower only in patients with ADCHF in whom beta blockers were maintained during initial hospitalisation. However, the benefit was lost after correcting for confounding factors. Interestingly, rehospitalisation for HF and length of hospital stay were unaffected by beta blockers discontinuation in all patients.

**Conclusion** In summary, non-withdrawal of beta blockers in acute decompensated chronic and de novo heart failure with reduced ejection fraction is associated with lower

## Strengths and limitations of this study

- This is the first study to assess non-withdrawal of beta blockers in de novo heart failure.
- Like any observational study, selection bias could exist. Moreover, the decision of beta blocker withdrawal during acute heart failure could have been due to different factors that we did not account for in our analysis.
- Furthermore, no information was available regarding the dose of beta blockers, in particular whether the dose was reduced in patients who continued to use beta blockers during acute decompensation.

intrahospital mortality but does not influence 3-month and 12-month mortality, rehospitalisation for heart failure, and the length of hospital stay.

**Trial registration number** NCT01467973; Post-results.

## INTRODUCTION

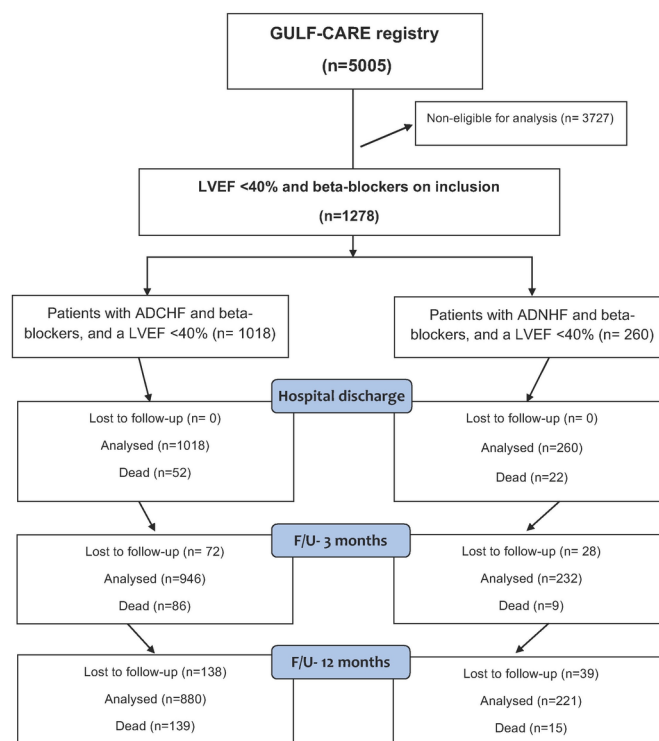
Since the publication of the Metoprolol CR/XL Randomised Intervention Trial in Congestive Heart Failure, the Cardiac Insufficiency Bisoprolol study II (CIBIS-II), the US Carvedilol Heart failure and the Carvedilol Prospective Cumulative Survival Study (COPERNICUS) trials,<sup>1-4</sup> in which beta blockers improved survival in patients with heart failure (HF), international guidelines recommended using this drug class as first-line treatment in chronic HF along with the renin-angiotensin system blockers.<sup>5</sup> Initial safety concerns regarding the use of beta blockers in patients with HF were

dropped with the emergence of several studies that demonstrated up to 30% decrease in mortality risk in those patients.<sup>6</sup> Despite the improvement in the treatment and prognosis of chronic HF, acute HF remains a challenging condition, treatment of which is essentially symptomatic. In the EuroHeart Failure Survey II, in-hospital mortality of patients with acute HF was about 7%,<sup>7</sup> and 1-year mortality above was 20%.<sup>8</sup> The continuation of beta blockers during acute HF remains controversial and subject to clinical judgement. The Beta-blocker CONTinuation Versus INTerruption in patients with Congestive heart failure hospitalizED for a decompensation episode (B-CONVINCED) trial, a randomised, controlled, open-labelled study that compared continuation with withdrawal of beta blockers during acute HF did not report any short-term or long-term benefit in patients assigned to continue their treatment.<sup>9</sup> In a post hoc analysis of the Survival of Patients With Acute Heart Failure in Need of Intravenous Inotropic Support (SURVIVE) study that had a similar design to B-CONVINCED, 1-month and 3-month mortality decreased in patients whose beta blockers were not withdrawn during initial hospitalisation.<sup>10</sup> However, the protective effect was lost after correcting for classical heart failure covariates.

Currently, there is no large-scale data from the Middle East (ME) with regard to beta blockers use in HF. The aim of this paper is to report on use of beta blockers in patients admitted with acute HF and to assess short-term and long-term consequences of withdrawal or continuation of beta blockers in patients with HF with left ventricular dysfunction in the ME.

## METHODS

The Gulf aCute heArt failuRe registry (Gulf-CARE) is a multinational multicentre prospective observational acute heart failure survey based on cases admitted to various hospitals in seven countries from the Gulf Middle East, namely Oman, Saudi Arabia, United Arab Emirates (UAE), Qatar, Bahrain, Yemen and Kuwait. Details of the recruitment of patients, the study design and methods have been published previously.<sup>11 12</sup> In brief, we collected data, as per the case report form, of patients with acute HF from both genders who were above 18 years of age admitted to the participating hospitals. Recruitment started in February 2012 and ended on 13 November 2012. This was preceded by a pilot phase of 1 month in November 2011. The registry continued to follow-up patients at 3 months and 1 year. The registry protocol was approved by each participating centre's research ethics committee or institutional review board (IRB): Directorate of research and studies, Ministry of Health—Sultanate of Oman, King Saud University's IRB, Kingdom of Saudi Arabia, Sheikh Khalifa medical city's IRB, UAE, Hamad Medical Corporation's IRB, Qatar, Mohammed Bin Khalifa cardiac centre's IRB, Bahrain, Sana'a University' IRB, Yemen and Ministry of Health's IRB in Kuwait. The study was registered at clinicaltrials.gov with number



**Figure 1** Flow chart of the current prospective analysis. Analysed were 1278 patients with an LVEF <40% and beta blockers on admission from the 5005 participants in the GULF-CARE registry. ADCHF, acute decompensated chronic heart failure; ADNHF, acute de novo heart failure; F/U, follow-up; GULF-CARE, Gulf aCute heArt failuRe rEGistry; LVEF, left ventricular ejection fraction.

NCT01467973. A written informed consent was obtained from all patients.

Acute HF was further classified as either acute decompensated chronic heart failure (ADCHF) or acute de novo heart failure (ADNHF). ADCHF was defined as worsening of HF in patients with a previous diagnosis or hospitalisation for HF. ADNHF was defined as acute HF in patients with no prior history of heart failure. All patients were followed-up at 3 months by telephone, and at 1 year either by telephone or by a clinic visit. The registry data were collected online using a dedicated website including demographics, risk factors, medical history, clinical manifestations, investigations, medications with dose and management. The participating hospitals ranged from secondary care hospitals to tertiary care hospitals with interventional facilities including device therapy.

The inclusion criteria for this analysis was those patients who were on beta blockers at time of admission and had a left ventricular ejection fraction (LVEF) <40%. Those patients with preserved left ventricular function and not on beta blockers at time of admission were excluded from further analysis. Furthermore, two cohorts were created, the first with ADCHF and the second with ADNHF. The main outcome measures were mortality, re-hospitalisation for HF and length of hospital stay. A scheme of the current prospective trial is described in figure 1.

Baseline categorical variables and outcome measures were summarised using frequency distributions while

means and SD were used for continuous variables. Outcome measures and baseline patients' characteristics were compared between the two groups: withdrawal and non-withdrawal of beta blockers using the  $\chi^2$  test (or Fisher's exact test when expected cell counts fell below 5) for categorical variables and the student's t-test or Wilcoxon rank sum test for numeric variables. Multivariate logistic regression analysis performed for in-hospital and 3 months included variables that were significantly different between the two groups in addition to age and gender. The model included age, gender, non-compliance to medication, systolic blood pressure (SBP), diastolic blood pressure (DBP), LVEF, creatinine, aspirin, statins and inotropes for ADCHF; and age, gender, ACE inhibitors and inotropes for ADNHF. Adjusted OR and 95% CIs with p values are presented. All analyses were done separately for the patients with ADCHF and ADNHF. In addition, several sensitivity analyses were performed. Propensity scores were computed using logistic regression with membership in the two groups as the outcome and baseline variables that were significantly different between the groups as the independent variables. These scores were used to adjust the association between the mortality outcomes and the main variable (membership in each group) using multivariate logistic regression. Moreover, propensity score matching using the most influential variable (inotropes) was used and the main comparison between the two groups was assessed with and without adjustment to variables that were still significantly different between the two groups even after matching. In ADCHF, variables adjusted after propensity score matching were gender, non-compliance to medication, SBP, DBP, statins and aspirin, whereas in ADNHF we only adjusted for ACE inhibitors as the sample sizes became small after matching. Statistical significance was set at the 5% level (two-tailed test). All analyses were done using IBM-SPSS V.23.0.

## RESULTS

Out of the total 5005 participants in the GULF-CARE, 2208 (44.1%) patients were already on beta blockers on inclusion. Further, beta blockers were prescribed in 1278 (42.2%) patients with a LVEF <40%. Among those, 1018 (79.9%) were diagnosed with ADCHF and 260 (20.4%) with ADNHF. As shown in [table 1](#), patients with ADCHF tended to have more comorbidities than patients with ADNHF. They had a higher prevalence of coronary artery disease, chronic kidney disease, valvular heart disease, atrial fibrillation and a lower LVEF; which could explain the more common use of angiotensin receptor antagonists (ARBs), aldosterone antagonists, vitamin K antagonists and diuretics in these patients. Interestingly, they smoked less, a phenomenon that could be due to the effect of earlier lifestyle changes and antismoking campaigns in patients with CHF.

Beta blockers were withdrawn in 9% of the patients in the ADCHF group and 13.8% in the ADNHF group. Those patients with ADCHF in whom beta blockers were discontinued had a lower blood pressure at inclusion and half of them required inotropic support during hospitalisation (see online supplementary table 1). Patients with ADNHF who continued beta blockade therapy were more commonly prescribed ACE inhibitors and required less inotropic support (see online supplementary table 2).

In the ADCHF group, 15 (1.6%) in-hospital deaths occurred in patients whose beta blocker therapy was not withdrawn as compared with 37 (40.2%) when beta blockers were discontinued ( $p<0.001$ ) ([table 2](#)).

Multivariate analysis showed that age, gender, non-compliance to medication, SBP, DBP, creatinine and statins were not predictors of in-hospital mortality in case of non-withdrawal of beta blockers. As expected, inotropic use was significantly associated with higher mortality in our model ([table 3](#)).

Nevertheless, non-withdrawal of beta blockers was associated with less mortality risk even after correcting for all the parameters (OR=0.05, 95% CI 0.022 to 0.112,  $p<0.001$ ). To confirm our findings, we performed a propensity score matching on inotropic use (see online supplementary table 3). Non-withdrawal of beta blockers was associated with less mortality in the propensity model (OR=0.05, 95% CI 0.015 to 0.170,  $p<0.001$ ), even after correcting for variables that remained significantly different in the new model (OR=0.084, 95% CI 0.015 to 0.468,  $p=0.005$ ). At 3 months, fewer deaths also occurred in the group of patients whose beta blockers therapy was not withdrawn ( $p=0.038$ ). However, after multivariate logistic regression analysis, the protection conferred by beta blockade continuation was lost (OR=0.513, 95% CI 0.231 to 1.143,  $p=0.10$ ).

In the ADNHF group, 5 (2.2%) in-hospital deaths occurred in patients whose beta blocker therapy was not withdrawn as compared with 17 (47.2%) when beta blockers were discontinued ( $p<0.001$ ). However, mortality rates were comparable at 3 months and 1 year ([table 4](#)).

Multivariate analysis did not show that age, gender or ACE inhibitors, which were different among both groups, predicted mortality ([table 5](#)).

Similarly, to the ADCHF, inotropic use was highly associated with mortality. We also performed a propensity score matching on inotropic use (see online supplementary table 4) and confirmed that beta blocker continuation in ADNHF has a favourable outcome (OR=0.05, 95% CI 0.015 to 0.170,  $p<0.001$ ), even after correcting for variables that remained significantly different between both groups in the new model (OR=0.047, 95% CI 0.013 to 0.169,  $p<0.001$ ). Similarly to patients with ADCHF, re-hospitalisation for HF and length of hospital stay were unaffected by the withdrawal of beta blockers.

**Table 1** Baseline characteristics of patients on beta blockers on admission and a left ventricular ejection fraction <40% included in the Gulf-CARE

	Patients with a LVEF <40% on beta blockers on admission n=1278			p Value *
	All patients in Gulf CARE n=5005	Patients with ADCHF and a LVEF <40%, on beta blockers on admission n=1018	Patients with ADNHF and a LVEF <40% on beta blockers on admission n=260	
Age (years)	59±15	61.0±13.9	59.8±13.8	0.21
Male gender	3131 (62.6)	751 (73.8)	177 (68.1)	0.07
BMI (kg/m <sup>2</sup> )	28±6	27.7±5.8	28.1±5.7	0.26
Hypertension	3059 (61.1)	673 (66.1)	181 (69.6)	0.29
Diabetes mellitus	2492 (49.8)	569 (55.9)	147 (56.5)	0.86
Hyperlipidaemia	1799 (35.9)	464 (45.6)	106 (40.8)	0.16
Smoking	1103 (22)	162 (15.9)	67 (25.8)	0.001
Race				
Arabs	4516 (90.2)	937 (92.0)	232 (89.2)	0.04
Asians	473 (9.5)	77 (7.6)	28 (10.8)	
Others	16 (0.3)	4 (0.4)	–	
Medical history				
Known CAD	2337 (46.7)	676 (66.4)	150 (57.7)	0.008
Stroke/TIAs	404 (8)	96 (9.4)	29 (11.2)	0.40
Valvular heart disease	675 (13.5)	154 (15.1)	19 (7.3)	0.001
Atrial fibrillation	607 (12)	170 (16.7)	23 (8.8)	0.001
CKD	744 (14.9)	215 (21.1)	28 (10.8)	0.001
Aetiology				
Non-compliance to medication	964 (19)	300 (29.5)	40 (15.4)	0.05
IHD	1365 (27)	204 (20.0)	117 (45.0)	0.67
HTN	410 (8.2)	46 (4.5)	12 (4.6)	0.26
Arrhythmia	301 (6)	61 (6.0)	11 (4.2)	0.49
Anaemia	143 (3.1)	23 (2.3)	5 (1.9)	0.50
Renal failure	221 (4.4)	58 (5.7)	9 (3.5)	0.19
Clinical and biochemical parameters				
HR, bpm	77.6±12.8	94.4±22.4	94.6±22.3	0.92
SBP, mm Hg	118±18	126.6±30.6	133.6±32.4	0.002
DBP, mm Hg	70±12	76.4±17.9	80.5±19.3	0.001
LVEF (%)	36.9±14	26.6±7.1	28.8±7.2	0.001
BNP, pg/mL	5324±4523	6847±9679	5227±4924	0.21
Creatinine, mmol/L	130±116	137.7±116.3	128.5±121.9	0.24
Medications				
Carvedilol	1099 (21.9)	649 (63.8)	100 (38.5)	0.001
Bisoprolol	626 (12.5)	286 (28.1)	90 (34.6)	0.04
Metoprolol	299 (5.9)	64 (6.3)	35 (13.5)	0.001
Atenolol	184 (3.6)	19 (1.9)	35 (13.5)	0.001
ACE inhibitors	2762 (55.2)	652 (64.0)	166 (63.8)	0.96
ARBs	645 (12.9)	180 (17.7)	23 (8.8)	0.001
Statins	2555 (51)	751 (73.8)	180 (69.2)	0.14

Continued

**Table 1** Continued

	Patients with a LVEF <40% on beta blockers on admission n=1278			p Value *
	All patients in Gulf CARE n=5005	Patients with ADCHF and a LVEF <40%, on beta blockers on admission n=1018	Patients with ADNHF and a LVEF <40% on beta blockers on admission n=260	
Aspirin	3089 (61.7)	832 (81.7)	204 (78.5)	0.23
VKA	618 (12)	221 (21.7)	19 (7.3)	0.001
Ibravadine	115 (2.3)	48 (4.7)	7 (2.7)	0.15
Aldosterone antagonists	840 (16.8)	419 (41.2)	45 (17.3)	0.001
Clopidogrel	966 (19)	301 (29.6)	81 (31.2)	0.61
Diuretics	2882 (57.6)	920 (90.4)	113 (43.5)	0.001
Inotropes use during hospitalisation	783 (16)	156 (15.3)	51 (19.6)	0.96

All values are given as n (%) or mean  $\pm$ SD.

\*p Value: patients with acute decompensated chronic heart failure and LVEF <40% on beta blockers on admission versus de novo heart failure and LVEF <40% on beta blockers on admission.

ADCHF, acute decompensated chronic heart failure; ADNHF, acute de novo heart failure; ARBs, angiotensin receptor blockers; BMI, body mass index; CARE, aCute heArt rEgistry; CAD, coronary artery disease; CKD, chronic kidney disease; IHD, ischemic heart disease; DBP, diastolic blood pressure; HR, heart rate; LVEF, left ventricular ejection fraction; BNP, B-type natriuretic peptide; SBP, systolic blood pressure; TIAs, transient ischaemic attacks; VKA, Vitamin K antagonists, .

## DISCUSSION

This observational study demonstrates that pursuing beta blocker therapy during acute HF confers to patients with chronic and de novo acute HF cardiovascular protection and decreases mortality. Interestingly, randomised placebo-controlled trials that assessed pursuing beta blockers versus withdrawal during acute

HF are missing; available data are extrapolated from post hoc analysis. The B-convinced was designed as a non-inferiority trial and demonstrated only safety of beta blockers during acute decompensation.<sup>9</sup> In a retrospective analysis of the SURVIVE study that initially assessed two inotropic treatments in critical patients with acute HF, the benefit associated with non-withdrawal of

**Table 2** Effect of non-withdrawal of beta blockers in acute decompensated chronic heart failure with beta blocker therapy on admission and a LVEF <40%

	All patients with acute decompensated heart failure, LVEF<40% and on beta-treatment on admission n=1018	Beta blockers maintained during hospitalisation n=926 (91%)	Beta blockers withdrawn during hospitalisation n=92 (9.0%)	p Value
<b>Inhospital outcome</b>				
Death	52/1018 (5.1)	15/926 (1.6)	37/92 (40.2%)	<0.001
Length of stay (days)	9.9 $\pm$ 15.0	9.7 $\pm$ 15.1	12.3 $\pm$ 13.6	0.1
<b>3-Month follow-up</b>				
Death	86/946 (9.1)	77/896 (8.6)	9/50 (18.0%)	0.038
Rehospitalisation for HF	219/859 (25.5)	204/818 (24.9)	15/41 (36.6%)	0.09
Length of stay (days)	8.1 $\pm$ 7.6	8.1 $\pm$ 7.8	7.7 $\pm$ 4.3	0.86
<b>12-Month follow-up</b>				
Death	139/880 (15.8)	128/835 (15.3)	11/45 (24.4%)	0.10
Rehospitalisation for HF	333/741 (44.9)	316/707 (44.7)	17/34 (50.0%)	0.54
Length of stay (days)	9.6 $\pm$ 12.0	9.6 $\pm$ 12.1	10.9 $\pm$ 11.1	0.73

The frequencies and percentages for death, rehospitalisation for HF and length of hospital stay. Death rates were cumulative. All values are given as n (%) or mean $\pm$ SD.

HF, heart failure; LVEF, left ventricular ejection fraction.

**Table 3** Multivariate analysis for in-hospital and 3-month mortality in patients with ADCHF, a LVEF <40% and beta blockers on admission

Variable	OR	95% CI	p Value
<b>In-hospital mortality</b>			
Age	1.022	0.991 to 1.055	0.17
Gender	1.058	0.428 to 2.618	0.90
Non-compliance to medication	1.736	0.642 to 4.698	0.27
SBP	0.990	0.968 to 1.014	0.41
DBP	1.003	0.964 to 1.044	0.87
LVEF	1.053	0.998 to 1.003	0.07
Creatinine	1.001	0.998 to 1.001	0.59
Aspirin	1.357	0.477 to 3.865	0.56
Statins	2.083	0.763 to 5.684	0.15
Inotropes	20.368	8.241 to 50.337	<0.001
<b>Beta blockers on discharge</b>			
Beta blockers withdrawn (reference group)	1	–	
Beta blockers maintained	0.050	0.022 to 0.112	<0.001
<b>3-Month mortality</b>			
Age	1.029	1.010 to 1.048	0.002
Gender	0.974	0.579 to 1.638	0.92
Non-compliance to medication	1.267	0.753 to 2.133	0.37
SBP	0.993	0.980 to 1.005	0.26
DBP	1.005	0.984 to 1.026	0.66
LVEF	1.003	0.970 to 1.037	0.87
Creatinine	1.001	1.000 to 1.003	0.15
Aspirin	1.516	0.828 to 2.777	0.17
Statins	1.307	0.747 to 2.284	0.34
Inotropes	1.456	0.759 to 2.793	0.25
<b>Beta blockers on discharge</b>			
Beta blockers withdrawn (reference group)	1	–	
Beta blockers maintained	0.513	0.231 to 1.143	0.10

ADCHF, acute decompensated chronic heart failure; DBP, diastolic blood pressure; LVEF, left ventricular ejection fraction; SBP, systolic blood pressure.

beta blockers was lost after correcting for HF covariates; only patients who never received beta blockers had a worse outcome as compared with patients who were on these drugs at inclusion and on discharge.<sup>10</sup> In a subanalysis of the Evaluation Study of Congestive Heart Failure and Pulmonary Artery Catheterization (ESCAPE) that assessed pulmonary artery catheter use among patients admitted with acute HF, patients already prescribed beta blockers on admission had a lower 6-month mortality risk and a shorter hospitalisation stay.<sup>13</sup> Outcomes of the Prospective Trial of Intravenous Milrinone for Exacerbations of Chronic Heart Failure (OPTIME-CHF), designed as a randomised placebo-controlled trial, failed to test the superiority of milrinone to placebo in patients with ADCHF.<sup>14</sup> Further observational analysis showed that withdrawal of beta blockers was associated with a greater risk of 2-month mortality

and rehospitalisation for HF despite limitations due to the use of milrinone in those patients and the small number of patients analysed.<sup>15</sup>

Our results are comparable to previous observational studies from North America and Europe. In the Italian Survey on Acute Heart Failure, withdrawal of beta blockers during acute HF was associated with almost fourfold increase in the risk of in-hospital mortality.<sup>16</sup> The Organised Programme to Initiate Lifesaving Treatment in Hospitalised Patients with Heart Failure is one of the largest Northern American registries of patients admitted with acute HF. Maintenance of beta blockers during acute decompensation was associated with better outcome in postdischarge mortality.<sup>17</sup> Consistent with our findings, Prins *et al* reported in a recent meta-analysis that included over 2700 patients treated with beta blockers and hospitalised for acute HF, that withdrawal of

**Table 4** Effect of non-withdrawal of beta blockers in acute decompensated de novo heart failure with beta blocker therapy on admission and an LVEF <40%

	All patients with de novo heart failure, LVEF<40% and on beta blockers treatment on admission n=260	Beta blockers maintained during hospitalisation n=224 (86.2%)	Beta blockers withdrawn during hospitalisation n=36 (13.8%)	p Value
<b>Inhospital outcome</b>				
Death	22/260 (8.5)	5/224 (2.2)	17/36 (47.2)	<0.001
Length of stay (days)	9.7±16.1	9.6±16.6	10.1±12.1	0.86
<b>3-Month follow-up</b>				
Death	9/232 (3.9)	7/214 (3.3)	2/18 (11.1)	0.14
Rehospitalisation for HF	39/223 (17.5)	38/207 (18.4)	1/16 (6.3)	0.31
Length of stay (days)	8.8±9.8	8.8±9.9	8.0±NE	NE
<b>1-year follow-up</b>				
Death	15/221 (6.8)	13/206 (6.3)	2/15 (13.3)	0.27
Rehospitalisation for HF	61/206 (29.6)	73/193 (37.8)	3/13 (23.1)	0.38
Length of stay (days)	7.9±7.5	8.2±7.6	2.7±2.1	0.21

The frequencies and percentages for death, rehospitalisation for HF and length of hospital stay. Death rates were cumulative. All values are given as n (%) or mean ±SD.

HF, heart failure; LVEF, left ventricular ejection fraction; NE, not estimable.

beta blockers significantly increased in-hospital and short-term mortality, and rehospitalisation for HF.<sup>18</sup>

Despite firm safety data and undoubted long-term benefit, beta blocker therapy remains underprescribed. In our study, only 44.1% of all patients presenting with acute HF and 44.2% of patients with a LVEF <40% were treated with beta blockers. The frequency of beta blockers prescription is variable according to cohorts and ranges from 32% in the 'Italian Survey on Acute Heart Failure' study<sup>16</sup> to 53.3% in the SURVIVE study<sup>10</sup> and 62% in the ESCAPE trial.<sup>13</sup>

It is not known why withdrawal of beta blockers in acute HF is associated with a worse prognosis. Activation of the sympathetic system, increase of catecholamine levels and

alterations in cardiac beta (β)-receptors are the hallmark of chronic HF; therefore beta blocker therapy in chronic HF could limit the deleterious effect of chronic β-receptor stimulation such as arrhythmias, hypertrophy and cardiomyocytes apoptosis.<sup>19</sup> It may be possible that withdrawal of beta blockers in the acute phase takes away earlier protective effect of β-adrenergic inhibition at a time when the neurohormonal system is activated and catecholamines are significantly increased.<sup>20</sup>

Managing beta blockers during acute HF is still unclear to most physicians. The Process for Assessment of Carvedilol Therapy in Heart Failure trial investigators were the first to report that in-hospital initiation of beta blockers was safe compared with postdischarge.<sup>21</sup> The latest guidelines from both the Society of Cardiology<sup>22</sup> and the American College of Cardiology foundation/American heart association<sup>23</sup> recommend initiating a beta blocker therapy following acute HF as soon as the patient is stable and before discharge. However, uncertainty persists in regards to continuing beta blockers during an acute decompensation. Beta blockade therapy discontinuation during AHF is variable. In older studies such as the OPTIME-CHF, beta blockers were withdrawn in over 20% of patients.<sup>15</sup> In our study, beta blockers were withdrawn in 9% of patients with ADCHF and 13.8% of patients with ADNHF. Those numbers are almost similar to the Italian Survey on Acute Heart Failure in which Orso *et al* reported a withdrawal rate of 9% in all patients with AHF with beta blockers on admission<sup>16</sup> However, Bohm *et al* reported a lower rate (6.8%) in the retrospective analysis of the SURVIVE study.<sup>10</sup>

It is not known why mortality risk reduction extends up to 3 months in ADCHF but not in ADNHF although the

**Table 5** Multivariate analysis for intrahospital death in patients with ADNHF, an LVEF <40% and beta blockers on admission

Variable	OR	95% CI	p Value
Age	1.047	0.992 to 1.105	0.097
Gender	2.179	0.431 to 10.989	0.346
ACE-inhibitors	1.112	0.215 to 5.757	0.899
Inotropes	172.272	16.002 to 1854.600	<0.001
<b>Beta blockers</b>			
Beta blockers withdrawn (reference group)	1		
Beta blockers maintained	0.018	0.003 to 0.122	<0.001*

ADNHF, acute de novo heart failure; DBP, diastolic blood pressure; LVEF, left ventricular ejection fraction; SBP, systolic blood pressure.

first group has higher cardiovascular comorbidities and more severe risk factors. One explanation could be the higher prescription of cardioprotective drugs such as ACE inhibitors, ARBs and diuretics; all having shown to reduce mortality in patients with chronic HF and improve the outcome.<sup>24–26</sup> One other explanation would also be the frequent use of beta blockers approved for HF in patients with ADCHF, whereas the prescription of non-HF selective beta blockers such as atenolol was more common in ADNHF. Finally, we cannot rule out that the relatively small number of patients with ADNHF, coupled to an even smaller death rate at 3 months, does not enable us draw any meaningful conclusions on long-term mortality in those patients.

Our study has a few limitations. Like any observational study, selection bias could exist. The decision of beta blocker withdrawal during acute HF could have been to different factors not accounted for in our analysis such as their side effects. Above all, beta blocker therapy could have been withdrawn in the more severe patients with a poor prognosis. Despite the correction on available confounding factors, we could have missed other markers of disease severity that were not recorded in the cohort. In addition, we could not determine whether the dosage of beta blockers on admission, or any reduction during hospitalisation, might have influenced the outcome. Finally, the duration of beta blocker treatment prior to acute HF was not recorded; this variable could also be a confounding factor since long-term beta blocker treatment could have been more beneficial than short term.

## CONCLUSION

Our study suggests non-withdrawal of beta blocker therapy during acute heart failure reduces intrahospital mortality risk in patients with acute decompensated chronic and de novo heart failure, but does not influence 3- and 12- month mortalities, rehospitalisation for heart failure and the length of hospital stay. Our findings could only be validated in randomised controlled trials designed to show the superiority of non-withdrawal of beta blockade therapy and also determine whether beta blocker dose should be reduced or kept unchanged compared with a withdrawal strategy.

### Author affiliations

- <sup>1</sup>Department of Medicine, Weill Cornell Medicine, Doha, Qatar
- <sup>2</sup>Department of Genetic Medicine, Weill Cornell Medicine, Doha, Qatar
- <sup>3</sup>Adult Cardiology Heart Hospital, Hamad Medical Corporation, Doha, Qatar
- <sup>4</sup>National Heart Center, Royal Hospital, Muscat, Oman
- <sup>5</sup>Division of Global and Public Health, Weill Cornell Medicine, Doha, Qatar
- <sup>6</sup>Department of Cardiac Sciences, King Fahad Cardiac Center, King Saud University, Riyadh, Saudi Arabia
- <sup>7</sup>College of Medicine, Mohammed Bin Rashid University of Medicine and Health Sciences, Dubai, UAE
- <sup>8</sup>Department of Cardiology, Sabah Al-Ahmed Cardiac Center, Kuwait, Kuwait
- <sup>9</sup>Department of Medicine, Al-Amiri Hospital, Kuwait, Kuwait
- <sup>10</sup>Heart and Vascular Institute, Cleveland Clinic, Abu Dhabi, UAE
- <sup>11</sup>Department of Cardiology, Adan Hospital, Kuwait, Kuwait
- <sup>12</sup>Department of Cardiology, Dubai hospital, Dubai, UAE

<sup>13</sup>Department of Cardiology, Mohammed Bin Khalifa Cardiac Center, Manamah, Bahrain

<sup>14</sup>Department of cardiology, Faculty of Medicine, Sana'a University, Sana, Yemen

<sup>15</sup>Department of cardiology, Tanta University, Tanta, Egypt

**Acknowledgements** We would like to acknowledge Andrew Bliszczuk for editorial assistance.

**Contributors** KS, KFA, NA, AA-A, MA-J, BB, WA, MR, NB, HA, AA-M, HAF, AE, PP and JAS were involved in the design of the Gulf CARE registry and patient enrolment and ensuring quality control of the study. CAK designed the analysis and wrote the manuscript. ZM and RS carried out the statistical analyses. All authors approved the final version of the manuscript.

**Funding** Gulf CARE is an investigator-initiated study conducted under the auspices of the Gulf Heart Association and funded by Servier, Paris, France and (for centres in Saudi Arabia) by the Saudi Heart Association. Dr Abi Khalil's lab is funded by the Biomedical Research Program (BMRP) at Weill Cornell Medicine-Qatar, a programme funded by Qatar Foundation, and by two grants from the Qatar National Research Funds under its National Priorities Research Program award numbers (NPRP 7 - 701 - 3 - 192 and NPRP 9-169-3-024). Dr Al-Habib's lab is funded by the Saudi Heart Association and The Deanship of Scientific Research at King Saud University, Riyadh, Saudi Arabia (research group number: RG -14360-013).

**Disclaimer** The funders did not have a role in the study's concept, analysis and writing of the manuscript.

**Competing interests** None declared.

**Patient consent** Obtained.

**Ethics approval** The registry protocol was approved by each participating centre's institutional review board.

**Provenance and peer review** Not commissioned; externally peer reviewed.

**Data sharing statement** The data include human data. To protect participant privacy, the data are available on request from the corresponding author.

**Open Access** This is an Open Access article distributed in accordance with the Creative Commons Attribution Non Commercial (CC BY-NC 4.0) license, which permits others to distribute, remix, adapt, build upon this work non-commercially, and license their derivative works on different terms, provided the original work is properly cited and the use is non-commercial. See: <http://creativecommons.org/licenses/by-nc/4.0/>

© Article author(s) (or their employer(s) unless otherwise stated in the text of the article) 2017. All rights reserved. No commercial use is permitted unless otherwise expressly granted.

## REFERENCES

1. Effect of metoprolol CR/XL in chronic heart failure: Metoprolol CR/XL Randomised Intervention Trial in Congestive Heart Failure (MERIT-HF). *Lancet* 1999;353:2001–7.
2. The Cardiac Insufficiency Bisoprolol Study II (CIBIS-II): a randomised trial. *Lancet* 1999;353:9–13.
3. Krum H, Roecker EB, Mohacs P, *et al.* Effects of initiating carvedilol in patients with severe chronic heart failure: results from the COPERNICUS Study. *JAMA* 2003;289:712–8.
4. Packer M, Bristow MR, Cohn JN, *et al.* The effect of carvedilol on morbidity and mortality in patients with chronic heart failure. U.S. Carvedilol Heart Failure Study Group. *N Engl J Med* 1996;334:1349–55.
5. Yancy CW, Jessup M, Bozkurt B, *et al.* 2013 ACCF/AHA guideline for the management of heart failure: executive summary: a report of the American College of Cardiology Foundation/American Heart Association Task Force on practice guidelines. *Circulation* 2013;128:1810–52.
6. Foody JM, Farrell MH, Krumholz HM. beta-Blocker therapy in heart failure: scientific review. *JAMA* 2002;287:883–9.
7. Nieminen MS, Brutsaert D, Dickstein K, *et al.* EuroHeart Failure Survey II (EHFS II): a survey on hospitalized acute heart failure patients: description of population. *Eur Heart J* 2006;27:2725–36.
8. Harjola VP, Follath F, Nieminen MS, *et al.* Characteristics, outcomes, and predictors of mortality at 3 months and 1 year in patients hospitalized for acute heart failure. *Eur J Heart Fail* 2010;12:239–48.
9. Jondeau G, Neuder Y, Eicher JC, *et al.* B-CONVINCED: Beta-blocker CONTinuation Vs. Interruption in patients with Congestive heart



- failure hospitalized for a decompensation episode. *Eur Heart J* 2009;30:2186–92.
10. Böhm M, Link A, Cai D, *et al.* Beneficial association of  $\beta$ -blocker therapy on recovery from severe acute heart failure treatment: data from the Survival of Patients With Acute Heart Failure in Need of Intravenous Inotropic Support trial. *Crit Care Med* 2011;39:940–4.
  11. Sulaiman K, Panduranga P, Al-Zakwani I, *et al.* Clinical characteristics, management, and outcomes of acute heart failure patients: observations from the Gulf acute heart failure registry (Gulf CARE). *Eur J Heart Fail* 2015;17:374–84.
  12. Sulaiman KJ, Panduranga P, Al-Zakwani I, *et al.* Rationale, Design, Methodology and Hospital Characteristics of the First Gulf Acute Heart Failure Registry (Gulf CARE). *Heart Views* 2014;15:6–12.
  13. Butler J, Young JB, Abraham WT, *et al.* Beta-blocker use and outcomes among hospitalized heart failure patients. *J Am Coll Cardiol* 2006;47:2462–9.
  14. Cuffe MS, Califf RM, Adams KF, *et al.* Short-term intravenous milrinone for acute exacerbation of chronic heart failure: a randomized controlled trial. *JAMA* 2002;287:1541–7.
  15. Gattis WA, O'Connor CM, Leimberger JD, *et al.* Clinical outcomes in patients on beta-blocker therapy admitted with worsening chronic heart failure. *Am J Cardiol* 2003;91:169–74.
  16. Orso F, Baldasseroni S, Fabbri G, *et al.* Role of beta-blockers in patients admitted for worsening heart failure in a real world setting: data from the Italian Survey on Acute Heart Failure. *Eur J Heart Fail* 2009;11:77–84.
  17. Fonarow GC, Abraham WT, Albert NM, *et al.* Influence of beta-blocker continuation or withdrawal on outcomes in patients hospitalized with heart failure: findings from the OPTIMIZE-HF program. *J Am Coll Cardiol* 2008;52:190–9.
  18. Prins KW, Neill JM, Tyler JO, *et al.* Effects of Beta-Blocker Withdrawal in Acute Decompensated Heart Failure: A Systematic Review and Meta-Analysis. *JACC Heart Fail* 2015;3:647–53.
  19. Lohse MJ, Engelhardt S, Eschenhagen T. What is the role of beta-adrenergic signaling in heart failure? *Circ Res* 2003;93:896–906.
  20. Onwuanyi A, Taylor M. Acute Decompensated Heart Failure: Pathophysiology and Treatment. *Am J Cardiol* 2007;99:S25–S30.
  21. Gattis WA, O'Connor CM, Gallup DS, *et al.* PredischARGE initiation of carvedilol in patients hospitalized for decompensated heart failure: results of the Initiation Management PredischARGE: Process for Assessment of Carvedilol Therapy in Heart Failure (IMPACT-HF) trial. *J Am Coll Cardiol* 2004;43:1534–41.
  22. McMurray JJ, Adamopoulos S, Anker SD, *et al.* ESC guidelines for the diagnosis and treatment of acute and chronic heart failure 2012: The Task Force for the Diagnosis and Treatment of Acute and Chronic Heart Failure 2012 of the European Society of Cardiology. *Eur J Heart Fail* 2012;14:803–69.
  23. Yancy CW, Jessup M, Bozkurt B, *et al.* 2013 ACCF/AHA guideline for the management of heart failure: a report of the American College of Cardiology Foundation/American Heart Association Task Force on practice guidelines. *Circulation* 2013;128:e240–327.
  24. Granger CB, McMurray JJ, Yusuf S, *et al.* Effects of candesartan in patients with chronic heart failure and reduced left-ventricular systolic function intolerant to angiotensin-converting-enzyme inhibitors: the CHARM-Alternative trial. *Lancet* 2003;362:772–6.
  25. Yusuf S, Pitt B, Davis CE, *et al.* Effect of enalapril on survival in patients with reduced left ventricular ejection fractions and congestive heart failure. *N Engl J Med* 1991;325:293–302.
  26. Taylor AL, Ziesche S, Yancy C, *et al.* Combination of isosorbide dinitrate and hydralazine in blacks with heart failure. *N Engl J Med* 2004;351:2049–57.