

BMJ Open Prevalence of chronic pain in the UK: a systematic review and meta-analysis of population studies

A Fayaz,¹ P Croft,² R M Langford,³ L J Donaldson,⁴ G T Jones⁵

To cite: Fayaz A, Croft P, Langford RM, *et al*. Prevalence of chronic pain in the UK: a systematic review and meta-analysis of population studies. *BMJ Open* 2016;**6**:e010364. doi:10.1136/bmjopen-2015-010364

► Prepublication history and additional material is available. To view please visit the journal (<http://dx.doi.org/10.1136/bmjopen-2015-010364>).

Received 24 October 2015
Revised 15 March 2016
Accepted 22 March 2016



CrossMark

¹Department of Surgery and Cancer, Imperial College London, London, UK

²Arthritis Research UK Primary Care Centre, Keele University, Keele, Staffs, UK

³Pain and Anaesthesia Research Centre, Barts Health NHS Trust, London, UK

⁴Institute of Global Health Innovation, Imperial College London, London, UK

⁵Musculoskeletal Research Collaboration (Epidemiology Group), Institute of Applied Health Sciences, University of Aberdeen, Aberdeen, UK

Correspondence to

Dr A Fayaz;
alanfayaz@outlook.com

ABSTRACT

Objectives: There is little consensus regarding the burden of pain in the UK. The purpose of this review was to synthesise existing data on the prevalence of various chronic pain phenotypes in order to produce accurate and contemporary national estimates.

Design: Major electronic databases were searched for articles published after 1990, reporting population-based prevalence estimates of chronic pain (pain lasting >3 months), chronic widespread pain, fibromyalgia and chronic neuropathic pain. Pooled prevalence estimates were calculated for chronic pain and chronic widespread pain.

Results: Of the 1737 articles generated through our searches, 19 studies matched our inclusion criteria, presenting data from 139 933 adult residents of the UK. The prevalence of chronic pain, derived from 7 studies, ranged from 35.0% to 51.3% (pooled estimate 43.5%, 95% CIs 38.4% to 48.6%). The prevalence of moderate-severely disabling chronic pain (Von Korff grades III/IV), based on 4 studies, ranged from 10.4% to 14.3%. 12 studies stratified chronic pain prevalence by age group, demonstrating a trend towards increasing prevalence with increasing age from 14.3% in 18–25 years old, to 62% in the over 75 age group, although the prevalence of chronic pain in young people (18–39 years old) may be as high as 30%. Reported prevalence estimates were summarised for chronic widespread pain (pooled estimate 14.2%, 95% CI 12.3% to 16.1%; 5 studies), chronic neuropathic pain (8.2% to 8.9%; 2 studies) and fibromyalgia (5.4%; 1 study). Chronic pain was more common in female than male participants, across all measured phenotypes.

Conclusions: Chronic pain affects between one-third and one-half of the population of the UK, corresponding to just under 28 million adults, based on data from the best available published studies. This figure is likely to increase further in line with an ageing population.

INTRODUCTION

Chronic pain, represented by conditions such as low back pain and osteoarthritis, has recently been highlighted as one of the most prominent causes of disability worldwide by

Strengths and limitations of this study

- Adherence to clearly defined and clinically meaningful inclusion criteria.
- Use of a risk of bias tool to exclude studies of low quality.
- Use of meta-analysis to quantify the current burden of chronic pain and chronic widespread pain in the UK.
- Limited number of high-quality studies.
- High level of heterogeneity among included studies.

the Global Burden of Disease reviews.¹ At the same time, national governments have started to recognise that chronic pain represents a major priority and challenge for their public health and healthcare systems through production of national strategies and convening of Pain Summits in countries including the UK, the USA and Australia.^{2–5} Such initiatives emphasise the importance of accurate population-based estimates of chronic pain in helping to drive and inform policies of prevention and care, needs assessments, and surveillance of the impact of interventions, as has happened for other long-term conditions such as cancer and cardiovascular disease.

Despite several high profile national reports highlighting the significance of chronic pain in the UK,^{5–8} there is little consensus regarding the burden of pain in this country. One estimate suggests that up to 8 million people in the UK live with chronic pain,⁵ in keeping with a telephone survey of residents across Europe in which 13% of the UK population reported pain of moderate-to-severe intensity, lasting for a period of >6 months.⁹ Estimates based on definitions more closely aligned with that of the International Association of the Study of Pain: ‘pain that persists beyond normal tissue healing time, which is assumed to be 3 months’¹⁰ have been considerably higher than those quoted from the European

telephone survey.^{7 11} The purpose of this review was to synthesise existing data on the population prevalence of various chronic pain definitions, in order to produce much needed, accurate and contemporary national estimates.

METHODS

A protocol for the review was devised in accordance with the PRISMA guidelines¹² and registered on PROSPERO (CRD: 42014012993).¹³ Searches of MEDLINE (inception to 31 May 2015) and EMBASE (1980 to 31 May 2015) electronic databases were performed (via Ovid) for articles reporting the prevalence of chronic pain in the UK. A list of the medical subject headings and free-text terms used are included under online supplementary appendix A. The results were supplemented by a manual search of the bibliographies of the shortlisted review and original study articles. In addition, a number of field experts were approached in order to identify additional viable studies from the grey literature.

We included all study formats reporting any point or period prevalence estimates, from a general population sample, for the following: (1) chronic pain: defined as pain in one or more body locations, lasting for a period of 3 months or longer; (2) chronic widespread pain: defined in accordance with the American College of Rheumatology (ACR) 1990 guidelines as pain in the axial skeleton and two contralateral limbs, lasting for a period of 3 months or longer;¹⁴ (3) fibromyalgia: defined in relation to either the 1990 or 2010 ACR criteria as 'widespread' pain, lasting for a period of 3 months or longer, in association with tender points or somatic symptoms as described in their respective protocols;^{14 15} and (4) neuropathic pain: defined as pain in one or more body locations, lasting for a period of 3 months or longer, with predominantly neuropathic features. Studies presenting data relating exclusively to specified body regions (eg, chronic pelvic pain only, or chronic lower back pain only) were not included in the review, as they would likely underestimate the prevalence of (non-site-specific) chronic pain. Where case-control studies were identified, they had to be nested within a cohort to allow for calculation of prevalence estimates. Studies based in general practices were included if they used the population registers of the practices as a sampling frame of the general population.

In order to provide contemporaneous and representative estimates, studies were excluded if they (1) presented data collected prior to 1990; (2) presented international prevalence estimates, where data from the UK was not independently retrievable; (3) presented data obtained from UK populations that were not deemed to be representative of the general population (eg, estimates of neuropathic pain in patients with diabetes, or chronic pain prevalence within specific migrant populations) or (4) presented data on a study population that had already been included in the

analysis. In the case of follow-up studies, estimates from the baseline studies were preferentially included in the review, unless the follow-up study provided data on additional definitions that were not available from the earlier publication.

Two authors (AF and GTJ) screened all the articles by title, and then by abstract. Shortlisted studies were then analysed in greater depth by reference to the full text for assessment of eligibility. Any disagreements regarding the suitability of individual studies were resolved after appraisal by a third author (PC). Data were extracted independently by at least two authors (AF and GTJ or AF and PC), using a collection tool piloted on a small sample of population studies. AF had not been involved in any previously published pain prevalence studies; articles describing studies to which one of the second reviewers (GTJ or PC) had contributed were allocated to the other reviewer for data extraction and quality appraisal. Data were extracted on population characteristics, response rate (where possible adjusted to reflect the viable survey denominator), crude prevalence estimates (number of cases divided by the sample size), age-adjusted and/or sex-adjusted prevalence estimates and, where provided, estimates stratified by age, by gender or by pain severity. Where age-standardised/sex-standardised data were available, these figures were preferentially used in the meta-analysis. Authors were not contacted directly for missing information.

The articles were all appraised using a risk of bias tool developed specifically for prevalence studies.¹⁶ The tool consists of 10 items addressing the external validity (risk of selection and non-response bias), as well as the internal validity (risk of measurement bias, and bias related to the data analysis) of observational studies in order to generate an overall risk of bias assessment. Studies that were deemed to be at 'high risk of bias' by both reviewers were removed from the review.

Estimates for the prevalence of chronic pain and chronic widespread pain that were not restricted to age-specific or gender-specific cohorts were incorporated into a meta-analysis. The SEs for prevalence (p) estimates were derived from the equation $\sqrt{[(p \times (1 - p))/n]}$, where n =number of participants with completed data in survey. Data were synthesised using StataSE V.13 for Mac. Studies were weighted according to the prevalence effect size and the inverse of the study variance in order to generate an I^2 value, serving as a measure of heterogeneity among the studies. A random effects model was used to generate summary prevalence data, displayed (on forest plots) with 95% CIs. Where number of studies and variation in the characteristics was sufficient (calendar year of survey and geographical location), stratified analysis of the survey prevalence figures was presented.

RESULTS

After removal of duplicates, our initial search generated 1726 studies. From this cohort 87 full-text articles were

reviewed for eligibility assessment; a further 11 articles were identified from the additional searches described in the Methods section. Flow charts of the screening and selection processes are included below under online supplementary appendices B and C.

Of the 25 papers shortlisted for detailed analysis, 6 were excluded on the basis of high risk of bias. Articles were mainly excluded due to the use of non-standardised definitions of chronic pain phenotypes^{17 18} (case definition and period prevalence risk) or from surveying populations that were deemed to be unrepresentative of the general population^{19–22} (study population and sampling frame risk). A breakdown of the risk of bias scoring, for included and excluded articles is presented under online supplementary appendix D.

In total, 19 articles were included for synthesis in our review: 13 cross-sectional studies, 4 cohort studies and 2 case-control studies nested in population cohorts. Collectively, the articles present prevalence data on 139 933 residents of the UK; baseline characteristics of included studies are presented in table 1. Meta-analysis was possible for two of the study phenotypes, namely chronic pain and chronic widespread pain.

Chronic pain

Ten studies presented prevalence data for chronic pain, two of which were from age-restricted cohorts and are therefore excluded from our national synthesis; a UK (England, Scotland and Wales) birth cohort of residents aged 45 years,²³ and a survey of 18–25 years old from the North Staffordshire region.²⁴ One study drew participants from a cohort of women previously enrolled in a national study looking at the long-term effects of the contraceptive pill,²⁵ and therefore did not present any pain prevalence data for males. The remaining seven articles reported data on general population samples from various regions across the UK;^{7 11 26–30} male participants comprised between 41.4% and 49.5% of the survey respondents. Reported prevalence of chronic pain in the UK ranged from 35.0% to 51.3% (table 2; pooled estimate 43.5%, 95% CI 38.4% to 48.5%). A forest plot of the studies included in the meta-analysis, arranged by date order, is presented in figure 1 demonstrating marked variability among the estimates (I^2 98.9%, $p=0.00$). Where gender-specific data were provided, the prevalence was consistently higher in female participants (37.0% to 51.8%) than in male participants (31.0% to 48.9%).

Exploration of heterogeneity

Potential sources of heterogeneity were explored using stratified analysis of the included studies. The gender and age distributions did not really vary enough among the studies to justify different categories; nor was there significant variability in survey methodology. However, pooling of estimates according to publication date suggests an increase in chronic pain prevalence over time: 40.8%

(95% CI 29.8% to 51.9%) across studies published between 1990 and 2000; 43.8% (95% CI 35.4% to 52.1%) from studies published between 2000 and 2010; increasing to 45.0% (95% CI 35.8% to 54.2%) from studies published after 2010 (figure 1). Differences were also apparent with geography: three studies included in the chronic pain meta-analysis presented data from distinct geographical locations: Scotland (Grampian),¹¹ SE England²⁷ and NW England (Cheshire);²⁸ one additional study presented stratified estimates for the same areas.³⁰ There was some evidence of geographical variation ranging from 41.5% (95% CI 28.5% to 54.5%) in NW England to 46.6% (95% CI 45.1% to 48.1%) in Scotland (figure 2), although there are too few studies to draw any firm conclusions.

Chronic pain prevalence by age

Twelve studies presented data stratified by age groups: chronic pain in seven studies,^{7 11 23–25 28 29} chronic widespread pain in six studies^{23 27 31–34} and neuropathic pain in one study.²⁹ Age strata did not overlap precisely across the studies, making synthesis of the data impractical. Within studies, chronic pain prevalence increased steadily with age from a low of 14.3% in 18–25 years old²⁴ to as high as 62% in the over 75 age group.¹¹ A single exception to this trend was observed in one instance where reported pain prevalence among 50–64 years old was higher than that reported in the older age strata.²⁸ Two of the five articles presenting data in the youngest age strata (18–39 years old) reported prevalence estimates >30%.^{11 29} The data for chronic pain have been tabulated in figure 3. Similar patterns of increasing prevalence with age were demonstrated in studies looking at chronic widespread pain and neuropathic pain, with one single exception where the prevalence of chronic widespread pain in 65–74 years old was lower than the prevalence in the 55–64-year-old bracket; stratification by gender in this study demonstrates that this drop is due to reduced pain reporting by male participants in the 65–74-year-old age bracket.²⁷ The prevalence of chronic widespread pain ranged from 6.8% in 18–32 years old³² to a peak of 21% in the over 75 age group.²⁷ Neuropathic pain prevalence by age was reported in a single study demonstrating increasing pain prevalence: 6.3%, 9.7% and 10.4% in 18–39, 40–59 and over 60 years old, respectively.

Chronic pain severity

Four articles presented data on chronic pain prevalence in which estimates were stratified according to pain severity,^{7 28 29 35} using the ‘grading severity of chronic pain’ tool developed by Von Korff *et al*,³⁶ and validated for use in chronic pain research.³⁷ The data have been reproduced in table 3; the national prevalence of moderately limiting, high disability pain (grade III) ranged from 4.7% to 6.5%, and that of highly limiting, high disability pain (grade IV) from 5.7% to 7.8% of the total

Table 1 Overview of all studies included in systematic review

Study	Study design	Sample source	Sample size	Response rate (Corrected)*	Male (n)	Age range (mean)	Prevalence estimates included in systematic review						Method for data retrieval	Risk of bias	Primary aim
							CP	CWP	FM	NeP	CPG	Age			
Beasley <i>et al</i> ^{P6}	Cross-sectional	2 GP practices in UK	14 680†	–	–	–	◆	◆					Postal questionnaire	Moderate	To see if the distribution of reported pain sites has any association with a number of potential risk markers
Macfarlane <i>et al</i> ^{P22}	Cohort	GB birth cohort	12 069	78.0%	49.4% (3918)	45		◆					Interview and examination	Moderate	To determine to what extent the reporting of pain in adulthood varies by adult socioeconomic status
Gale <i>et al</i> ^{P4}	Cohort	GB birth cohort	11 971	78.3%	49.2% (3399)	45 (45)		◆					Questionnaire	Low	To investigate the relationship between intelligence in childhood and risk of CWP in adulthood
Smith <i>et al</i> ^{P5}	Cross-sectional	UK RCP OCP study	11 797	85.4%	0%	–	◆					◆	Postal questionnaire	Moderate	To examine the prevalence and factors associated with CP among women still in the RCoGP OCP Study
Croft <i>et al</i> ^{P8}	Case Control nested in Cohort	UK RCP OCP study	11 797	85.4%	(0)	(55)		◆					Questionnaire	Low	To identify associations between illness episodes and future pain complaints
Jones <i>et al</i> ^{P3}	Cohort	GB birth cohort	10 453	89.7%	–	44–46 (45)		◆					Postal questionnaire	Low	To examine whether children with common symptoms experience an increased risk of CWP as adults
Torrance <i>et al</i> ^{P9}	Cross-sectional	10 GP practices, 5 locations across England and Scotland	10 000	44.5% (47.0%)	42.9% (1846)	>18 (53)	◆			◆	◆	◆	Postal questionnaire	Moderate	To estimate the proportion of NeP in the population, that is, 'refractory'
Bridges ⁷	Cross-sectional	Postcodes across England	8599†	(66.0%)	44.4% (3817)	16–100	◆				◆	◆	Interview	Moderate	
Vandenkerkhof <i>et al</i> ^{P3}	Case-control nested in cohort	UK Birth cohort (England, Scotland and Wales)	8572†	–	–	45 (45)	◆	◆					Postal questionnaire	Moderate	To examine the relationship between diet and lifestyle, and CWP
Torrance <i>et al</i> ^{P0}	Cross-sectional	6 GP practices (Grampian, Leeds, London)	6000	50.0% (52.4%)	44.4% (1333)	18–96 (50)	◆			◆	◆		Postal questionnaire	Moderate	To improve the understanding of chronic pain with neuropathic features using epidemiological research

Continued

Table 1 Continued

Study	Study design	Sample source	Sample size	Response rate (Corrected)*	Male (n)	Age range (mean)	Prevalence estimates included in systematic review						Method for data retrieval	Risk of bias	Primary aim
							CP	CWP	FM	NeP	CPG	Age			
Elliott <i>et al</i> ¹¹	Cross-sectional	29 GP practices across Grampian, Scotland	5036	71.6% (82.3%)	48.3% (1741)	>25	♦					♦	Postal questionnaire	Low	To quantify and describe the prevalence and distribution of CP in the community
Smith <i>et al</i> ³⁵	Cross-sectional	29 GP practices across Grampian, Scotland	4611	78.2% (82.3%)	48.3%	>25					♦		Postal questionnaire	Moderate	To describe the prevalence and distribution in the community of CP defined as 'significant' and 'severe'
Jones <i>et al</i> ⁴¹	Cross-sectional	Grampian NHS register	4600	34.9% (36.3%)	45.0%	>25 (55)			♦				Postal questionnaire	Moderate	To determine the population prevalence of FM
Aggarwal <i>et al</i> ⁸⁹	Cross-sectional	1 GP practice in Manchester	4200	59.6% (72.0%)	45% (1035)	18–75 (Mdn=48)		♦					Postal questionnaire	Moderate	To investigate the co-occurrence, in the general population, of syndromes that are frequently unexplained
Parsons <i>et al</i> ²⁸	Cross-sectional	16 GP practices across SE England	4171	60% (62.0%)	44.0% (1073)	18–102 (52)	♦				♦	♦	Postal questionnaire	Moderate	To measure the prevalence and troublesomeness of musculoskeletal pain in different body locations and age groups
Macfarlane <i>et al</i> ⁴⁰	Cross-sectional	3 GP practices across NW England	3950	69.9% (80.3%)	41.1% (1020)	25–65 (Mdn=54)		♦					Postal questionnaire	Moderate	To determine whether the report of pain is influenced by meteorological conditions
Macfarlane <i>et al</i> ⁸²	Cross-sectional	1 GP practice in Manchester	3004	65.0% (75.0%)	42.8% (835)	18–65		♦				♦	Postal questionnaire	Moderate	To determine whether psychological symptoms and mental disorder are an intrinsic part of the CWP syndrome
Mallen <i>et al</i> ²⁴	Cross-sectional	3 GP practices in North Staffordshire	2389	35.9% (37.0%)	–	18–25	♦				♦	♦	Postal questionnaire	Moderate	To establish the prevalence of severely disabling CP in young adults
Croft <i>et al</i> ²⁷	Cross-sectional	2 GP practices in Cheshire	2034	66% (75.0%)	43.0% (572)	20–85 (Mdn=46)	♦	♦				♦	Postal questionnaire	Moderate	To establish the prevalence of CWP and associated symptoms in a general population sample

*Population sample is a duplicate from Elliot *et al*¹¹ therefore, only age-stratified prevalence estimates have been included. Response rates were adjusted to reflect the viable survey denominator.

†n=population responded (denominator not stated).

CP, chronic pain; CPG, chronic pain grade; CWP, chronic widespread pain; FM, fibromyalgia; GP, general practitioner; Mdn, median; n, number; NeP, neuropathic pain; NHS, National Health Service.



Table 2 Studies reporting estimates for chronic pain prevalence

Study	Pain definition	Sample size (response)	Male (n)	Age range (mean)	Prevalence total (95% CI) (n)	Prevalence in males (95% CI)	Prevalence in females (95% CI)
Studies excluded from meta-analysis							
Smith <i>et al</i> ²⁵	Aches or pains in previous 1/12, lasting >3/12	11 797 (85.4%)	0%	–	–	–	38.40%
Mallen <i>et al</i> ²⁴	Cross-sectional	2389 (37.0%)	–	18–25	14.3% (119)	–	–
Vandenkerkhof <i>et al</i> ²³	Aches or pains in previous 1/12, lasting >3/12	8572*	–	45 (45)	53.3% (4573)	–	–
Studies reporting data from 1990 to 2000							
Croft <i>et al</i> ²⁷	Pain in previous 1/12, lasting >3/12	2034 (75.0%)	43.0% (572)	20–85 (Mdn=46)	35.0%	–	–
Elliott <i>et al</i> ¹¹	Current pain or discomfort, present for >3/12	5036 (82.3%)	48.3% (1741)	>25	46.4† (1817)	48.9% (37.0% to 61.4%)	51.8% (41.8% to 61.0%)
Studies reporting data from 2001 to 2009							
Torrance <i>et al</i> ³⁰	Current pain or discomfort, present for >3/12	6000 (52.4%)	44.4% (1333)	18–96 (50)	48.0% (1420)	–	–
Parsons <i>et al</i> ²⁸	Current pain, present for >3/12	4171 (62.0%)	44.0% (1073)	18–102 (52)	39.5%‡ (966)	37.2%‡	41.3%‡
Studies reporting data from 2010 to 2015							
Beasley <i>et al</i> ²⁶	Pain lasting >3/12	–	–	–	51.3% (7536)	–	–
Torrance <i>et al</i> ²⁹	Currently troubled by pain or discomfort, present for >3/12	10 000 (47.0%)	42.9% (1846)	>18 (53)	46.6† (2202)	45.0%§	47.9%§
Bridges ⁷	Current pain, present for >3/12	8599 (66.0%)	44.4% (3817)	16–100	37.2% (3202)	31.0%	37.0%

*n=population responded (denominator not stated).

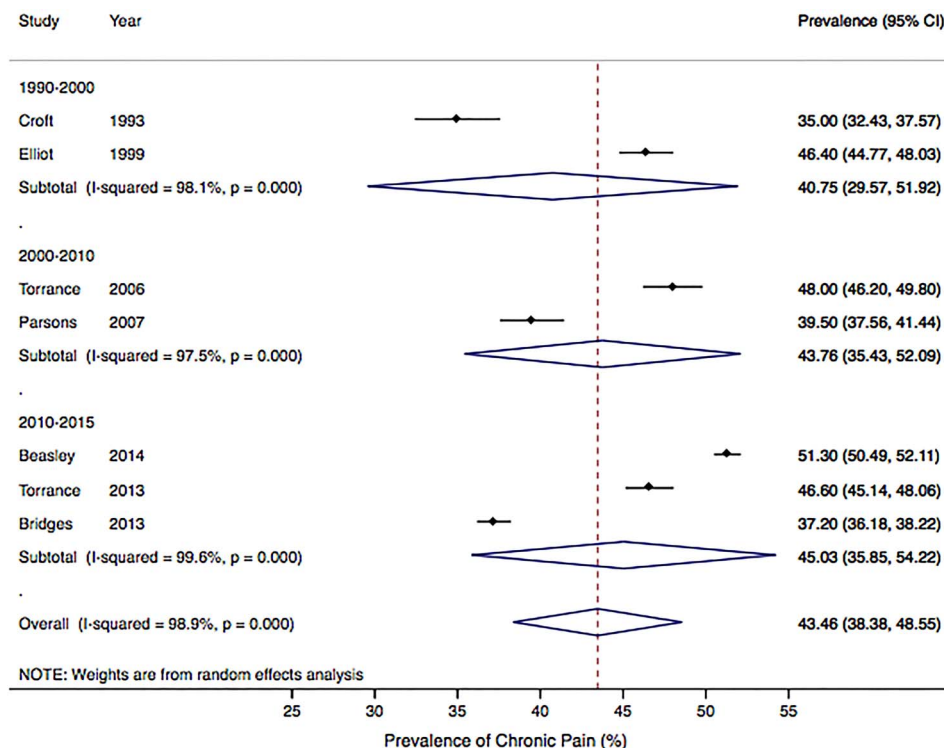
†Age-adjusted/gender-adjusted estimate. Three gender estimates were calculated from a smaller data set of 4306 participants.

‡Presented figures have been derived from tabulated data presented in article.

§Gender estimates were calculated from a smaller data set of 4306 participants.

Mdn, median; n, number.

Figure 1 Pooled estimates for chronic pain prevalence by date of publication.

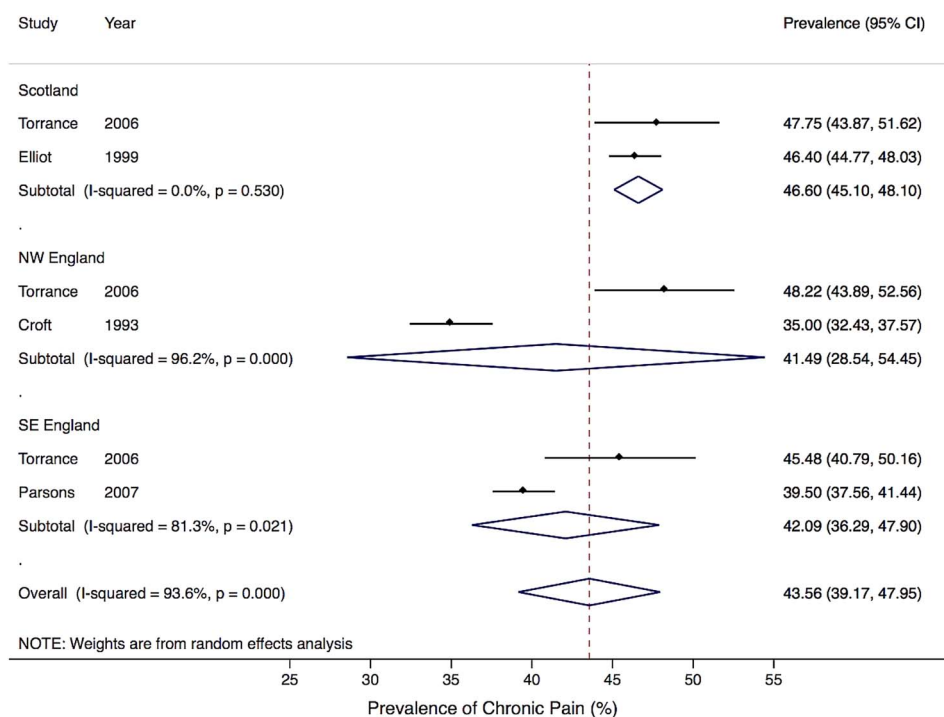


population. Combining these two groups, between 10.4% and 14.3% of the population of the UK report severely disabling chronic pain that is either moderately or severely limiting (Von Korff grades III and IV). One article presented data on chronic neuropathic pain severity estimating 1.8% and 2.6% of the population experience grades III and IV chronic neuropathic pain, respectively.²⁹

Chronic widespread pain

Ten studies presented prevalence data for chronic widespread pain. Four studies surveying age-restricted birth cohorts of the British population,^{23 31 33 34} and one study reporting estimates from a gender-restricted cohort³⁸ were excluded from the pooled analysis. The remaining five articles reported data on samples representative of the general population from various regions

Figure 2 Pooled estimates for chronic pain prevalence by geographical region.



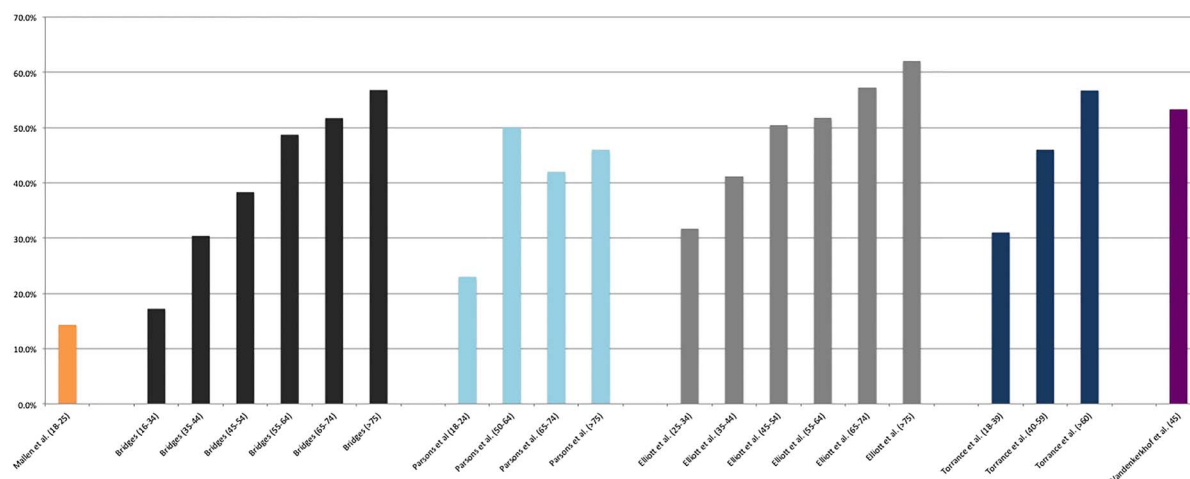


Figure 3 Chronic pain prevalence by age strata.

across the UK.^{26 27 32 39 40} Prevalence estimates from all 10 studies are reproduced in table 4, and a forest plot demonstrating the variability among study estimates is displayed in figure 4 (I^2 91.5%, $p=0.00$). The reported prevalence of chronic widespread pain ranged from 11.2% to 16.5% (pooled estimate 14.2%, 95% CI 12.3% to 16.1%). Prevalence estimates were again higher in female (12.3% to 17.9%) than in male participants (9.0% to 14.1%).

Chronic neuropathic pain

Two studies, from the selection presenting data on chronic pain, also screened participants for features predictive of neuropathic pain (defined as a score of 12, or greater, on Leeds Assessment of Neuropathic Symptoms and Signs questionnaire), thereby collectively estimating the prevalence of chronic neuropathic pain among 16 000 residents registered at general practitioner surgeries across England and Scotland: 8.9% and 8.2% in the respective studies.^{29 30} Estimates for chronic neuropathic pain prevalence were higher in female participants (9.2% to 10.2%) than in males (6.7% to 7.9%).

Fibromyalgia

Owing to the practical restrictions of formally diagnosing a patient with fibromyalgia (requiring a history and

examination in order to exclude alternative causes for widespread pain¹⁴), only one study⁴¹ was able to provide comprehensive data from populations representative of the general population. This study used the modification of the ACR (2010) preliminary diagnostic criteria for fibromyalgia which relies on self-reported pain and somatic symptoms and was developed specifically for epidemiological studies.⁴² The authors estimated the population prevalence of fibromyalgia to be 5.4% (95% CI 4.7% to 6.1%).⁴¹ A small proportion of respondents to the survey (2.4% of the source population) were invited for clinical examinations in order to ascertain prevalence rates of fibromyalgia using the conventional diagnostic criteria developed in 1990. These figures were weighted back to the target population in order to generate 'general population' estimates, against which the modified research criteria could be compared. However, as the methodology used to generate the latter prevalence estimates was subject to a greater risk of bias, only figures based on the modified criteria, and derived from the source population, have been included in our review.

DISCUSSION

Based on best quality studies of general population samples, the estimated prevalence of chronic pain in the

Table 3 Studies reporting prevalence estimates for moderate or severe chronic pain

Study	Pain measure	CPGS grade III (%)	CPGS grade III by gender	CPGS grade IV (95% CI)	CPGS grade IV by gender (95% CI)
Smith <i>et al</i> ³⁵	Chronic pain	—	—	6.3% (5.9% to 6.7%) 5.7% (4.9% to 6.5%)*	M=5.7% (4.6% to 6.8%) F=6.9% (5.7% to 8.1%)
Torrance <i>et al</i> ²⁹	Chronic pain	6.2	—	6.0%	—
Parsons <i>et al</i> ²⁸	Chronic pain	6.5	—	7.8%	—
Bridges ^{7†}	Chronic pain	4.7	M=3.9% F=5.2%	7.2%	M=6.5% F=7.7%
Torrance <i>et al</i> ²⁹	Neuropathic pain	1.8	—	2.6%	—

*Estimates adjusted to sampling frame.

†Gender-stratified prevalence estimates from Bridges⁷ have been retrieved by access to the raw data. CPGS, Chronic Pain Grade Scale; F, Female; M, Male.

Table 4 Studies reporting prevalence estimates for chronic widespread pain

Study	Pain definition	Sample size	Male (n)	Age range (mean)	Prevalence total (n)	Prevalence in males (%)	Prevalence in females (%)
Studies excluded from meta-analysis							
Croft <i>et al</i> ³⁸	ACR in the past 1/12 for >3/12	11 797	(0)	(55)	—	—	12.30
Jones <i>et al</i> ³³	ACR in the past 1/12 for >3/12	10 453	—	44–46 (45)	12.2%	11.8	12.7
Macfarlane <i>et al</i> ²²	ACR in the past 1/12 for >3/12	12 069	49.4% (3918)	45	11.8%	—	—
Vandenberg <i>et al</i> ²³	ACR in the past 1/12 for >3/12	8572*	—	45 (45)	12.3% (1056)	12.0	13.0
Gale <i>et al</i> ³⁴	ACR in the past 1/12 for >3/12	11 971	49.2% (3399)	45 (45)	14.4% (993)	14.1	14.7
Studies included in meta-analysis							
Macfarlane <i>et al</i> ³²	ACR in the past 1/12 for >3/12	3004	42.8% (835)	18–65	12.9% (252)	10.5	14.7
Croft <i>et al</i> ²⁷	ACR in the past 1/12 for >3/12	2034	43.0% (572)	20–85 (Mdn=46)	11.2† (164)	9.40	15.60
Aggarwal <i>et al</i> ³⁹	ACR for >3/12	4200	45% (1035)	18–75 (Mdn=48)	14.8% (340)	9.0	17.9
Macfarlane <i>et al</i> ⁴⁰	ACR in the past 1/12 for >3/12	3950	41.1% (1020)	25–65 (Mdn=54)	15.3% (381)	—	—
Beasley <i>et al</i> ²⁶	ACR in the past 1/12 for >3/12	14 680*	—	—	16.5%	—	—

*n=population responded (denominator not stated).

†Age-adjusted/gender-adjusted estimate.

ACR, American College of Rheumatology; Mdn, median; n, number.

UK is 43%. This equates to just under 28 million people (referencing population statistics from 2013). Chronic pain prevalence rises steadily with increasing age, affecting up to 62% of the population over the age of 75, suggesting that the burden of chronic pain may increase further still, in line with an ageing population, if the incidence remains unaltered. The proportion of patients reporting severe pain was also summarised. Weighted averages for chronic widespread pain suggest that 14.2% of the population may be affected. Between 10.4% and 14.3% of the population report chronic pain that is either moderately or severely limiting (Von Korff grades III and IV), figures that translate into an estimated median of 7.9 million people in the UK population with this category of chronic pain.

The estimate of 43% (28 million people) in the UK with chronic pain is considerably higher than a previously quoted figure of 7.8 million people with 'chronic pain'⁵ based on data from the telephone-based pain in Europe survey.⁹ However, the European survey looked only at moderate-to-severe pain, and figures from that survey are more directly comparable with, and similar to, our summary estimates for moderately or severely limiting chronic pain.

Chronic pain in our review was defined primarily in terms of symptom duration (pain present for a period of 3 months or greater), arguably not reflective of the societal burden of the condition. It may be that a proportion of 'chronic pain' reporters are highly functioning individuals with little restriction of day-to-day activity, and limited reliance on health services; many people living with chronic inflammatory or degenerative conditions, in their mildest forms, would fall into this category. However, it is of interest that even in the youngest population age groups, where these conditions are likely to be rare, prevalence estimates for chronic pain are as high as 30% (figure 3), suggesting a greater potential burden on the 'working' population than anticipated.

To our knowledge, this is the first study attempting to synthesise prevalence data on chronic pain phenotypes specifically from the UK. In order to strengthen our findings, we have attempted to limit the impact of clinical and methodological heterogeneity by imposing fairly strict selection criteria from the outset of our review, and by remaining selective about the studies that were permitted to enter the meta-analysis. At the expense of sensitivity, our selection criteria generated data comparable enough to allow for synthesis and meta-analysis of the two most prominent pain phenotypes (chronic pain and chronic widespread pain). The tests for statistical heterogeneity among articles included in the meta-analyses still demonstrated substantial variability between studies however (I^2 98.9% and 95.2% for chronic pain and chronic widespread pain, respectively). There was limited opportunity to investigate sources of this variability due to the small number of studies included and the lack of recorded characteristics showing variability between studies. A

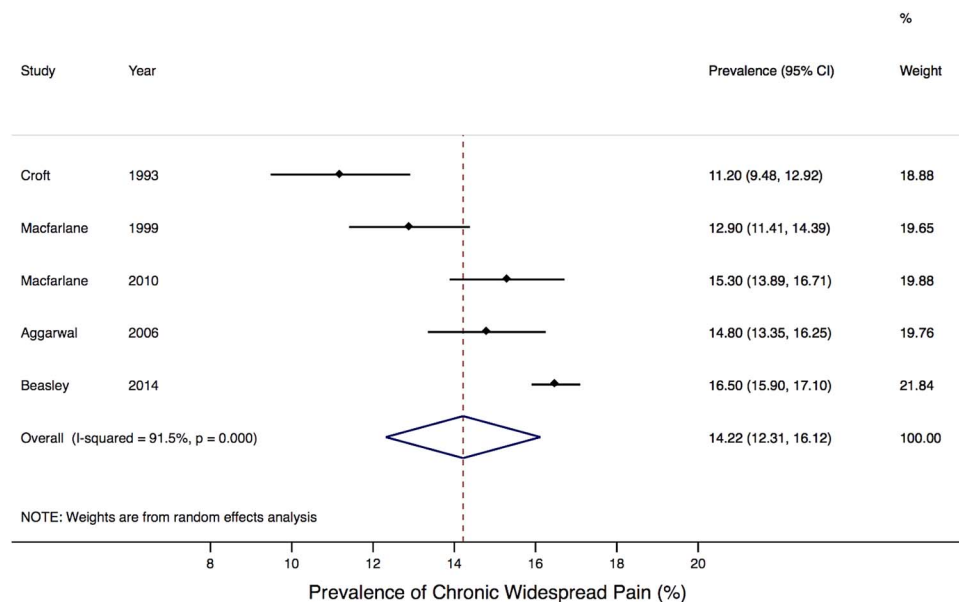


Figure 4 Pooled estimates for chronic widespread pain prevalence.

stratified analysis grouped by calendar year of survey suggested this as one potential source of systematic variation between studies, prevalence increasing with time, and one grouping studies by location of study population suggested this as another potential source, but firm conclusions in this regard are limited by the few studies available in which to make robust comparisons, and the marked heterogeneity within the groups. No other stratified analyses by study were possible, but we can speculate that differences in age structure, levels of deprivation and urban/rural differences could also be contributing to differences between study populations, as well as variation in the distribution of known risk factors and confounders. However, without access to individual patient data, and an individual participant data meta-analysis, it is not possible to control fully for these factors.

Another limitation of our review was the quality of the studies available for synthesis. Fewer than half of the 19 included studies were primarily designed to produce prevalence data (table 1), and this was reflected in the variability of reporting of important variables: population denominators and response rates were not always identifiable, in particular where the survey measured multiple outcomes; participant demographics were not always displayed; and there were occasional numerical discrepancies between the data presented in the study abstract, main text and results tables. Six studies were excluded from the review on the grounds of a higher than acceptable risk of bias, three of which provided data that could potentially have been incorporated into our meta-analysis of chronic pain prevalence. We acknowledge that different approaches exist, in terms of whether to, and if so how to, use quality appraisal in systematic literature reviews.⁴³ However, our a priori approach was that quality assessment would be used to select only those studies that met a minimum standard.¹³

While it is possible that references from the grey literature have been missed, we are reassured that a recent systematic review of all chronic widespread pain surveys⁴⁴ did not identify any eligible UK papers which had not been included at some stage of our literature search.

Our study indicates how a systematic review of published surveys carried out in one country, with exclusion of studies at high risk of bias, can provide population prevalence estimates for different pain conditions of the sort required by national policy strategies for prevention and care of chronic pain. Despite the high level of heterogeneity between study estimates, the summary figures are comparable with those from international surveys and reviews. For example in the USA, the Institute of Medicine estimated the prevalence of chronic pain in America to be 40%, affecting an estimated 100 million people,³ similar to those of WHO surveys across developed (37%) and developing (41%) countries,⁴⁵ despite between-country variability, and to the estimate from our review here (43%). Surveys of more severe chronic disabling pain in America,⁴⁶ Europe⁹ and elsewhere⁴⁷ estimate similar prevalence figures to those found here (around 12%). We conclude that our estimates can be used in national and local prevalence calculations of chronic pain prevalence, to inform, for example, planning of community pain services and targets for prevention.

In conclusion, we have used the best available data to demonstrate that chronic pain affects between one-third and one-half of the population of the UK: a figure that is likely to increase further, with time, in line with an ageing population. Such prevalence data does not itself define need for care or targets for prevention, but reliable information on prevalence will help to drive public health and healthcare policymakers' prioritisation of

this important cause of distress and disability in the general population. In the interests of improving the quality and reporting of epidemiological data, we would encourage future population studies to adhere to standardised methods for collecting and presenting observational data, such as the guidance produced by the Strengthening the Reporting of Observational Studies in Epidemiology (STROBE) group.⁴⁸

Acknowledgements The authors are grateful for the input of Professor Blair Smith (University of Dundee): his counsel early in the project, and his advice and comments regarding the search strategy; and Professor Danielle van der Windt (Keele University) for helpful advice and comments.

Contributors AF was involved with the study design, data collection, analysis and write-up. He is the guarantor. GTJ and PC assisted with the study design, data collection, analysis and revisions. RML and LJD contributed to the design of the study and revisions to the article.

Funding The British Pain Society provided financial assistance to AF with the costs of this project. PC was partly supported by an Arthritis Research UK Primary Care Centre grant (reference: 18139).

Competing interests RML reports personal fees from Grunenthal, grants and personal fees from Napp/Mundipharma, personal fees from Pfizer, personal fees from Astrazeneca, personal fees from BioQuiddity, personal fees from The Medicines Co, outside the submitted work.

Provenance and peer review Not commissioned; externally peer reviewed.

Data sharing statement No additional data are available.

Open Access This is an Open Access article distributed in accordance with the Creative Commons Attribution Non Commercial (CC BY-NC 4.0) license, which permits others to distribute, remix, adapt, build upon this work non-commercially, and license their derivative works on different terms, provided the original work is properly cited and the use is non-commercial. See: <http://creativecommons.org/licenses/by-nc/4.0/>

REFERENCES

- Vos T, Flaxman AD, Naghavi M, *et al.* Years lived with disability (YLDs) for 1160 sequelae of 289 diseases and injuries 1990–2010: a systematic analysis for the Global Burden of Disease Study 2010. *Lancet* 2012;380:2163–96.
- Department of Health and Human Services USG. National Pain Strategy: a comprehensive population health strategy for pain, 2015. <http://iprc.nih.gov/docs/DraftHHSNationalPainStrategy.pdf> (accessed Feb 2016).
- Committee on Advancing Pain Research C, and Education; Board on Health Sciences Policy; Institute of Medicine. Relieving pain in America: a blueprint for transforming prevention, care, education and research, 2011. <http://www.nap.edu/catalog/13172/relieving-pain-in-america-a-blueprint-for-transforming-prevention-care> (accessed Feb 2016).
- The National Pain Strategy, 2010. <http://www.painaustralia.org.au/the-national-pain-strategy/national-pain-strategy.html> (accessed Feb 2016).
- Donaldson LJ. *Pain: breaking through the barrier. 150 years of the Annual Report of the Chief Medical Officer: on the state of the public health.* London, 2008. http://webarchive.nationalarchives.gov.uk/20130107105354/http://www.dh.gov.uk/en/Publicationsandstatistics/Publications/AnnualReports/DH_096206
- Price C. *Putting pain on the agenda: the report of the First English Pain Summit.* United Kingdom, 2012. https://www.britishtainsociety.org/static/uploads/resources/files/members_articles_putting_pain_agenda.pdf.
- Bridges S. *Chronic pain.* Health Survey for England, 2011. <https://catalogueicnhsuk/publications/public-health/surveys/heal-survey-eng-2011/HSE2011-Ch9-Chronic-Pain.pdf> 2012. <https://catalogueicnhsuk/publications/public-health/surveys/heal-survey-eng-2011/HSE2011-Ch9-Chronic-Pain.pdf>
- National Pain Audit. Final report 2010–2012. <http://www.nationalpainaudit.org/media/files/NationalPainAudit-2012.pdf>
- Breivik H, Collett B, Ventafridda V, *et al.* Survey of chronic pain in Europe: prevalence, impact on daily life, and treatment. *Eur J Pain* 2006;10:287–333.
- [No authors listed]. Classification of chronic pain. Descriptions of chronic pain syndromes and definitions of pain terms. Prepared by the International Association for the Study of Pain, Subcommittee on Taxonomy. *Pain Suppl* 1986;3:S1–226.
- Elliott AM, Smith BH, Penny KI, *et al.* The epidemiology of chronic pain in the community. *Lancet* 1999;354:1248–52.
- Liberati A, Altman DG, Tetzlaff J, *et al.* The PRISMA statement for reporting systematic reviews and meta-analyses of studies that evaluate healthcare interventions: explanation and elaboration. *BMJ* 2009;339:b2700.
- Fayaz A, Croft P, Langford RM, *et al.* The prevalence of chronic pain in the United Kingdom: protocol for systematic review. http://www.crd.york.ac.uk/PROSPERO/display_record.asp?ID=CRD42014012993. PROSPERO International prospective register of systematic reviews, 2014.
- Wolfe F, Clauw DJ, Fitzcharles MA, *et al.* The American College of Rheumatology preliminary diagnostic criteria for fibromyalgia and measurement of symptom severity. *Arthritis Care Res* 2010;62: 600–10.
- Wolfe F, Smythe HA, Yunus MB, *et al.* The American College of Rheumatology 1990 criteria for the classification of fibromyalgia. Report of the Multicenter Criteria Committee. *Arthritis Rheum* 1990;33:160–72.
- Hoy D, Brooks P, Woolf A, *et al.* Assessing risk of bias in prevalence studies: modification of an existing tool and evidence of interrater agreement. *J Clin Epidemiol* 2012;65:934–9.
- Gureje O, Von Korff M, Simon GE, *et al.* Persistent pain and well-being: a World Health Organization study in primary care. *JAMA* 1998;280:147–51.
- Gajria C, Murray J, Birger R, *et al.* Identification of patients with neuropathic pain using electronic primary care records. *Inform Prim Care* 2011;19:83–90.
- Martin KR, Beasley M, Macfarlane GJ, *et al.* Chronic pain predicts reduced physical activity in a large population cohort study. *Arthritis Rheumatol* 2014;66:S434.
- Nicholl BI, Mackay D, Cullen B, *et al.* Chronic multisite pain in major depression and bipolar disorder: cross-sectional study of 149,611 participants in UK Biobank. *BMC Psychiatry* 2014;14:2433.
- Bowsher D, Rigge M, Sopp L. Prevalence of chronic pain in the British population: a telephone survey of 1037 households. *Pain Clinic* 1991;4:223–30.
- Macfarlane GJ, Pye SR, Finn JD, *et al.* Investigating the determinants of international differences in the prevalence of chronic widespread pain: evidence from the European Male Ageing Study. *Ann Rheum Dis* 2009;68:690–5.
- Vandenkerkhof EG, Macdonald HM, Jones GT, *et al.* Diet, lifestyle and chronic widespread pain: results from the 1958 British Birth Cohort Study. *Pain Res Manag* 2011;16:87–92.
- Mallen C, Peat G, Thomas E, *et al.* Severely disabling chronic pain in young adults: prevalence from a population-based postal survey in North Staffordshire. *BMC Musculoskelet Disord* 2005;6:42.
- Smith BH, Elliott AM, Hannaford PC. Is chronic pain a distinct diagnosis in primary care? Evidence arising from the Royal College of General Practitioners' Oral Contraception Study. *Fam Pract* 2004;21:66–74.
- Beasley M, Macfarlane GJ. Chronic widespread pain versus multi-site pain: does the distribution matter? *Arthritis Rheumatol* 2014;66:S908–S09.
- Croft P, Rigby AS, Boswell R, *et al.* The prevalence of chronic widespread pain in the general population. *J Rheumatol* 1993;20:710–13.
- Parsons S, Breen A, Foster NE, *et al.* Prevalence and comparative troublesomeness by age of musculoskeletal pain in different body locations. *Fam Pract* 2007;24:308–16.
- Torrance N, Ferguson JA, Afolabi E, *et al.* Neuropathic pain in the community: more under-treated than refractory? *Pain* 2013;154: 690–9.
- Torrance N, Smith BH, Bennett MI, *et al.* The epidemiology of chronic pain of predominantly neuropathic origin. Results from a general population survey. *J Pain* 2006;7:281–9.
- Macfarlane GJ, Norrie G, Atherton K, *et al.* The influence of socioeconomic status on the reporting of regional and widespread musculoskeletal pain: results from the 1958 British Birth Cohort Study. *Ann Rheum Dis* 2009;68:1591–5.
- Macfarlane GJ, Morris S, Hunt IM, *et al.* Chronic widespread pain in the community: the influence of psychological symptoms and mental disorder on healthcare seeking behavior. *J Rheumatol* 1999;26: 413–19.

33. Jones GT, Silman AJ, Power C, *et al.* Are common symptoms in childhood associated with chronic widespread body pain in adulthood? Results from the 1958 British Birth Cohort Study. *Arthritis Rheum* 2007;56:1669–75.
34. Gale CR, Deary IJ, Cooper C, *et al.* Intelligence in childhood and chronic widespread pain in middle age: the National Child Development Survey. *Pain* 2012;153:2339–44.
35. Smith BH, Elliott AM, Chambers WA, *et al.* The impact of chronic pain in the community. *Fam Pract* 2001;18:292–9.
36. Von Korff M, Ormel J, Keefe FJ, *et al.* Grading the severity of chronic pain. *Pain* 1992;50:133–49.
37. Smith BH, Penny KI, Purves AM, *et al.* The Chronic Pain Grade questionnaire: validation and reliability in postal research. *Pain* 1997;71:141–7.
38. Croft P, Lewis M, Hannaford P. Is all chronic pain the same? A 25-year follow-up study. *Pain* 2003;105:309–17.
39. Aggarwal VR, McBeth J, Zakrzewska JM, *et al.* The epidemiology of chronic syndromes that are frequently unexplained: do they have common associated factors? *Int J Epidemiol* 2006;35:468–76.
40. Macfarlane TV, McBeth J, Jones GT, *et al.* Whether the weather influences pain? Results from the EpiFunD study in North West England. *Rheumatology* 2010;49:1513–20.
41. Jones GT, Atzeni F, Beasley M, *et al.* The prevalence of fibromyalgia in the general population: a comparison of the American College of Rheumatology 1990, 2010, and modified 2010 classification criteria. *Int J Epidemiol* 2015;67:568–75.
42. Wolfe F, Clauw DJ, Fitzcharles MA, *et al.* Fibromyalgia criteria and severity scales for clinical and epidemiological studies: a modification of the ACR Preliminary Diagnostic Criteria for Fibromyalgia. *J Rheumatol* 2011;38:1113–22.
43. Viswanathan M, Ansari MT, Berkman ND, *et al.* *AHRQ methods for effective health care. Assessing the risk of bias of individual studies in systematic reviews of health care interventions. Methods guide for effectiveness and comparative effectiveness reviews.* Rockville, MD: Agency for Healthcare Research and Quality (US), 2008.
44. Mansfield KE, Sim J, Jordan JL, *et al.* A systematic review and meta-analysis of the prevalence of chronic widespread pain in the general population. *Pain* 2016;157:55–64.
45. Tsang A, Von Korff M, Lee S, *et al.* Common chronic pain conditions in developed and developing countries: gender and age differences and comorbidity with depression-anxiety disorders. *J Pain* 2008;9:883–91.
46. Nahin RL. Estimates of pain prevalence and severity in adults: United States, 2012. *J Pain* 2015;16:769–80.
47. Croft PB, Blyth FM, van der Windt D. *Chronic pain epidemiology: from aetiology to public health.* Oxford, UK: University Press, 2010.
48. Vandenberghe JP, von Elm E, Altman DG, *et al.* Strengthening the Reporting of Observational Studies in Epidemiology (STROBE): explanation and elaboration. *Epidemiology* 2007;18:805–35.

Third to half of UK population lives with chronic pain

Proportion likely to rise as population ages; major cause of disability and distress

Between a third and half (43%) of the UK population—roughly 28 million adults—lives with chronic pain, finds an analysis of the available evidence, published in the online journal **BMJ Open**.

This proportion is likely to rise as the population ages, warn the researchers, who add that chronic pain is a major cause of disability and distress among those affected by it.

There is no consensus on the proportion of people living with long term pain in the UK, and in a bid to try and gain an accurate picture, the researchers trawled relevant databases to find research on different types of pain, published after 1990.

Their search included studies on population based estimates of chronic pain—defined as lasting more than 3 months—chronic widespread pain, fibromyalgia (a rheumatic condition characterised by muscular or musculoskeletal pain), and chronic neuropathic pain (pain caused by nerve signalling problems).

From among 1737 relevant articles, 19 studies, involving just under 140,000 adults, were deemed suitable for inclusion in the final analysis.

They pooled the study data to arrive at an estimate of the prevalence of chronic pain, overall, and chronic widespread pain. Summary estimates were also drawn up for moderate to severely disabling chronic pain, fibromyalgia, and chronic neuropathic pain among UK adults.

Based on seven studies, the researchers worked out that the prevalence of chronic pain ranged from 35% to 51% of the adult population, with the prevalence of moderate to severely disabling chronic pain (based on four studies), ranging from 10% to 14%—equivalent to around 8 million people.

Pooling of the data showed that 43% of the population experience chronic pain, and 14% of UK adults live with chronic widespread pain. The summarised data also showed that 8% of UK adults experience chronic neuropathic pain, and 5.5% live with fibromyalgia.

Twelve of the studies categorised the prevalence of pain by age group, and unsurprisingly, these showed that older people were more likely to live with pain over the long term.

Among 18-25 year olds, the prevalence was 14%, although it may be as high as 30% among 18-39 year olds, the analysis indicates—a sizeable chunk of the working population, say the researchers.

Among those aged 75 and above, the prevalence was almost two thirds (62%), suggesting that if current trends continue, the burden of chronic pain may increase further still as the population ages, say the researchers.

Women were more likely than men to be affected by chronic pain, irrespective of age or pain type.

The researchers point out that the included studies varied considerably, and that not all of them were of high quality, so making it difficult to draw firm conclusions.

The studies showed gradually increasing prevalence of chronic pain over time, from 1990. And the researchers estimate that the prevalence of chronic pain in the UK is now around 43%, equating to around 28 million people, based on population stats for 2013.

“Such prevalence data does not itself define need for care or targets for prevention, but reliable information on prevalence will help to drive public health and healthcare policymakers’ prioritisation of this important cause of distress and disability in the general population,” they conclude.