

BMJ Open Impact of health insurance for tertiary care on postoperative outcomes and seeking care for symptoms: quasi-experimental evidence from Karnataka, India

Neeraj Sood,^{1,2,3} Zachary Wagner⁴

To cite: Sood N, Wagner Z. Impact of health insurance for tertiary care on postoperative outcomes and seeking care for symptoms: quasi-experimental evidence from Karnataka, India. *BMJ Open* 2016;**6**:e010512. doi:10.1136/bmjopen-2015-010512

► Prepublication history and additional material is available. To view please visit the journal (<http://dx.doi.org/10.1136/bmjopen-2015-010512>).

Received 9 November 2015
Accepted 27 November 2015



CrossMark

For numbered affiliations see end of article.

Correspondence to

Dr Neeraj Sood;
nsood@healthpolicy.usc.edu

ABSTRACT

Objectives: To evaluate the effects of a government insurance programme covering tertiary care for the poor in Karnataka, India—Vajpayee Arogyashree Scheme (VAS)—on treatment seeking and postoperative outcomes.

Design: Geographic regression discontinuity.

Setting: 572 villages in Karnataka, India.

Participants: 3478 households in 300 villages where VAS was implemented and 3486 households in 272 neighbouring matched villages ineligible for VAS.

Intervention: A government insurance programme that provided free tertiary care to households below the poverty line in half of villages in Karnataka from February 2010 to August 2012.

Main outcome measure: Seeking treatment for symptoms, posthospitalisation well-being, occurrence of infections during hospitalisation and need for rehospitalisation.

Results: The prevalence of symptoms was nearly identical for households in VAS-eligible villages compared with households in VAS-ineligible villages. However, households eligible for VAS were 4.96 percentage points (95% CI 1 to 8.9; $p=0.014$) more likely to seek treatment for their symptoms. The increase in treatment seeking was more pronounced for symptoms of cardiac conditions, the condition most frequently covered by VAS. Respondents from VAS-eligible villages reported greater improvements in well-being after a hospitalisation in all categories assessed and they were statistically significant in 3 of the 6 categories (walking ability, pain and anxiety). Respondents eligible for VAS were 9.4 percentage points less likely to report any infection after their hospitalisation (95% CI -20.2 to 1.4 ; $p=0.087$) and 16.5 percentage points less likely to have to be rehospitalised after the initial hospitalisation (95% CI -28.7 to -4.3 ; $p<0.01$).

Conclusions: Insurance for tertiary care increased treatment seeking among eligible households. Moreover, insured patients experienced better posthospitalisation outcomes, suggesting better quality of care received. These results suggest that there are several pathways through which tertiary care insurance

Strengths and limitations of this study

- This paper used a rigorous quasi-experimental approach (geographic regression discontinuity) to estimate the causal effect of public tertiary care insurance for the poor on treatment-seeking behaviour and quality of care received.
- The results of this study will help inform the decision of several Indian states that are contemplating implementing this type of insurance scheme.
- Although the approach is rigorous, the study is limited in that assignment of the insurance was non-random, which could have created meaningful unobservable differences between people that were eligible and ineligible for the insurance scheme.

could improve health, aside from increasing utilisation of the services that the programme directly subsidises.

INTRODUCTION

There is extensive evidence on how health insurance programmes in developing countries affect healthcare utilisation of covered services.^{1–2} Prior research suggests that health insurance expansions in Thailand, China and Mexico resulted in an increase in utilisation of covered services.^{3–5} Similarly, removing user fees in Ghana increased utilisation of formal healthcare providers by 12%.^{6–7} However, just evaluating the effects of health insurance on utilisation of covered health services is not adequate to understand how and whether insurance improves health. For example, insurance schemes in Ghana, Costa Rica and China increased utilisation but did not exhibit any improvements in health outcomes,^{8–10} whereas in Thailand and Colombia increased utilisation seems to

have led to health improvements. What is needed is a better understanding of the contextual factors surrounding insurance coverage, as well as a more comprehensive examination of the multiple pathways through which insurance can affect health. For example, several insurance programmes in India, the location of this study, cover only costly tertiary care. Such programmes could not only increase use of tertiary care but also increase incentives to use primary care as a means of early detection of illnesses that could be treated by tertiary care.^{11 12} Similarly, insurance not only influences the amount of healthcare used but can also impact quality of care. For example, several insurance programmes mandate basic quality standards in order to be deemed eligible for insurance reimbursement. Thus, insurance can improve quality by steering patients to providers who meet quality standards and by increasing incentives for providers to meet quality standards.

In this paper, we examine the impact of an insurance scheme that covered tertiary care services for the poor in India on seeking medical care for symptoms associated with covered illnesses and on postoperative outcomes after hospitalisations in tertiary care facilities. The programme that we evaluate was called Vajpayee Arogyashree Scheme (VAS) and it was launched in the state of Karnataka in India in 2010. VAS was initially only rolled out to the northern half of the state of Karnataka, resulting in a natural experiment that allowed for causal assessment of VAS's impact. A recent study demonstrated that VAS led to a significant decline in mortality from covered health conditions.¹³ The study found that VAS increased utilisation of covered services but did not explore other mechanisms that might have led to improved health. Understanding such mechanisms will provide insight into why VAS was successful at improving health and also help in understanding how insurance in general can influence patient and provider behaviour.

We used the same empirical strategy as in Sood *et al*¹³ to identify the causal effect of VAS on seeking medical care for symptoms and on postoperative outcomes for illnesses covered by VAS. Increasing treatment seeking for symptoms leads to earlier and greater detection of VAS illnesses, which allows for earlier intervention and could help to explain the findings of reduced mortality. VAS also enlisted many state-of-the-art hospitals to participate in the programme, which provides beneficiaries with access to higher quality facilities that were likely too expensive otherwise. Higher quality of care in these facilities could lead to better postoperative outcomes, which could also help to explain reduced mortality.

METHODS

VAS insurance

Most VAS beneficiaries were poor and lived in rural areas with little or no access to tertiary care. Residents in eligible areas who possessed a Below Poverty Line (BPL) card issued by the state government were automatically

enrolled in VAS. VAS enabled beneficiaries to receive free tertiary care at both private and public hospitals empanelled by VAS as capable of providing tertiary care. Beneficiaries paid no premiums or copayments at the point of service. As of June 2013, VAS empanelled about 150 hospitals capable of providing tertiary care, including all major medical centres in the state. Empanelled hospitals were required to have all necessary licences and certificates, a general ward with at least 50 beds, at least 5 feet of space between beds, an ICU with at least 3 beds, a step down ICU with at least 2 beds, a post-operative ward and an in house pharmacy. Hospitals were also required to have diagnostic facilities that included radiology and biochemistry equipment, MRI and CT scan capabilities, a blood bank, and ambulance services. Hospital operating rooms were required to have an array of standard operating equipment.¹⁴ Hospitals received a fixed bundled payment based on a reimbursement schedule for more than 400 tertiary care service packages in the areas of cardiology, oncology, neurology, nephrology, neonatology, burn care and trauma care. Since most hospitals are located in urban centres in southern Karnataka while beneficiaries are located in villages as far as several hundred miles away, empanelled hospitals were required to organise health camps in rural areas to screen patients for tertiary care and transport eligible patients to hospitals. Hospitals signed an agreement to conduct these health camps during the empanelment process and received a fixed payment per health camp conducted.

Study design

Following the empirical strategy reported in Sood *et al*,¹³ we exploited the phased roll out of VAS to measure its impact on treatment-seeking behaviour. In February 2010, VAS offered insurance to residents in the northern part of the state of Karnataka; in August of 2012, VAS decided to extend insurance coverage to the entire state. During this staggered implementation, we evaluated the programme's outcomes using a quasi-experimental design that took advantage of the arbitrary boundary in VAS coverage. In particular, we conducted surveys in September 2012, and compared outcomes in neighbouring villages on either side of the boundary drawn between the communities chosen for early versus late implementation. Although surveys were conducted after VAS coverage had been announced for the southern part of the state, implementation in southern districts was slow and spillover was minimal. Of the 4000 VAS covered hospitalisations that occurred in our six study districts prior to conducting the surveys, only 140 hospitalisations were from southern districts.

The close geographical proximity within one Indian state of the early and late implementation villages was plausibly unrelated to outcomes of interest. We were thus able to use the geographic discontinuity in order to compare outcomes in VAS-eligible areas to outcomes in adjoining VAS-ineligible areas without introducing

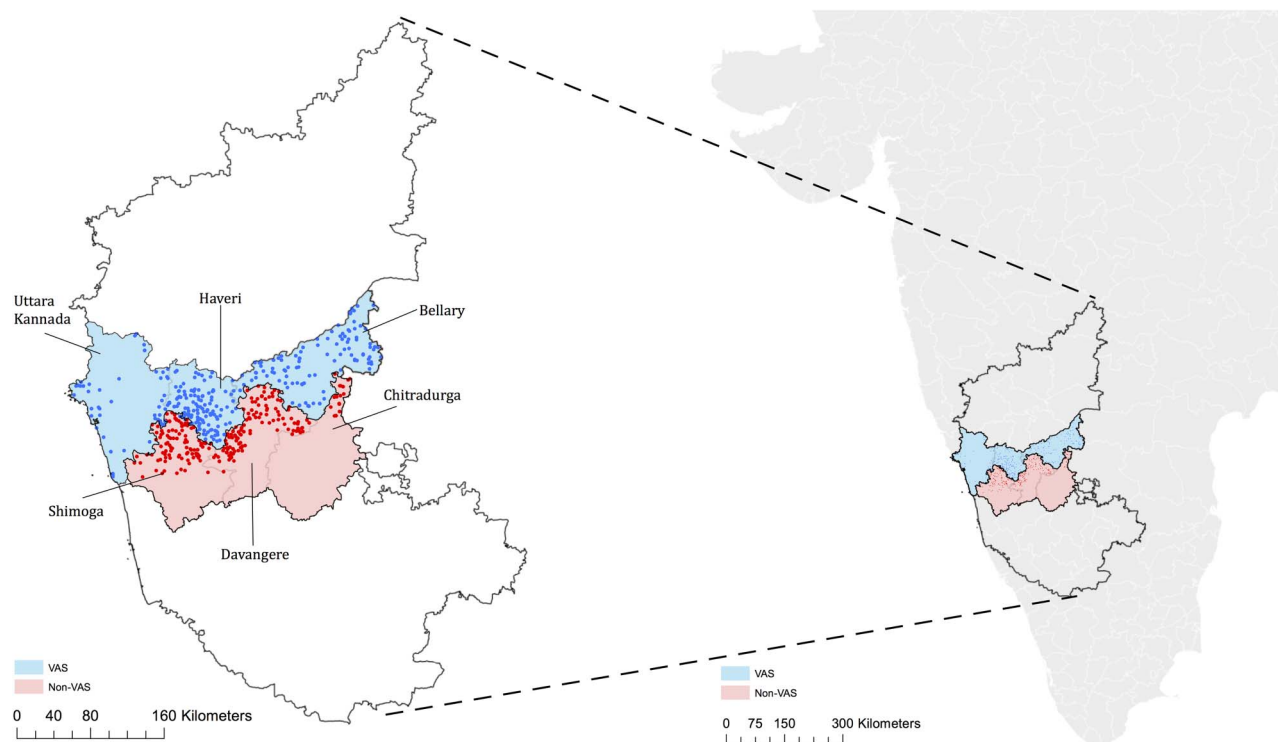


Figure 1 Study area map (VAS, Vajpayee Arogyashree Scheme).

selection bias. To reinforce similarity between eligible and ineligible households, we selected treatment and control villages to study by matching on geographic proximity, demographics and socioeconomic status (SES) characteristics. In particular, we used the last available census data (2001) to randomly select 300 control villages using probability proportional to size (population) in the three VAS-ineligible districts just south of the eligibility border (in Shimoga, Davangere and Chitradurga districts) and matched these villages (with replacement) to 272 similar treatment villages in the three districts just north of the eligibility border (Uttara Kannada, Haveri and Bellary). Twenty-four villages were sampled twice and one village was sampled five times. [Figure 1](#) presents a map demonstrating the geographical proximity of the sampled villages. The villages were matched by identifying the 'nearest neighbour' based on propensity scores. The census variables used to estimate propensity scores included fraction of population greater than 6 years of age, sex composition of population less than 6 years of age, fraction schedule caste and fraction schedule tribe (historically disadvantaged communities), female literacy rate and population employed. [Table 1](#) shows that treatment and control villages were balanced on all characteristics included in the propensity score models.

Study population

Our study population comes from a random sample of 6964 BPL households in villages eligible and ineligible for VAS with oversampling of households who

experienced a hospitalisation for covered health conditions. The sampling process is described in the flow chart ([figure 2](#)). In September 2012, we enumerated all households in the selected villages (44 562 and 38 186 households in the VAS-eligible and VAS-ineligible villages, respectively). Respondents were asked for the primary reason for any hospitalisation during the past year from a list of 33 broad conditions; we then conducted an additional survey in all households with a hospitalisation for a potentially covered condition and a random sample of households without a covered hospitalisation. The surveys are further described below.

Table 1 Village-level characteristics used for propensity score matching

Demographics*	VAS eligible (%)	VAS ineligible (%)	p Value
<6 years old	14.41	14.12	0.144
Per cent of female <6 years old	48.54	48.64	0.646
Scheduled caste	20.98	21.28	0.944
Scheduled tribe	14.89	12.75	0.148
Female literacy	43.09	44.30	0.285
Population employed	50.64	49.79	0.192

*Data are from the 2001 census.
VAS, Vajpayee Arogyashree Scheme.

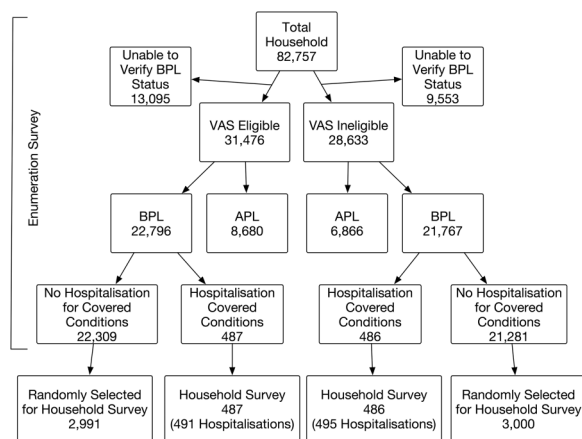


Figure 2 Flow diagram of sample (APL, Above Poverty Line; BPL, Below Poverty Line; VAS, Vajpayee Arogyashree Scheme).

Data sources

Enumeration survey

All households in sampled villages were asked to participate in a door-to-door survey and 81% of the households completed the survey. Surveyors recorded information on whether or not (1) the household had a state-issued BPL card, and (2) anyone in the household was hospitalised in the past year. All questions were administered in Kannada, the local language. After excluding 22 648 households that claimed BPL status but could not produce the card, we analysed information on 22 796 households in VAS-eligible villages and 21 767 households in VAS-ineligible villages.

Household survey

All households below the poverty line with a hospitalisation for a potentially covered condition, and a simple random sample of households with no covered hospitalisation participated in a detailed household survey. We thus surveyed 487 and 2991 households with potentially covered and no covered hospitalisations, respectively, in VAS-eligible villages; and 486, and 3000 households with potentially covered and no covered hospitalisations, respectively, in VAS-ineligible villages (see [figure 2](#)).

The household survey asked respondents (usually the head of household) whether they suffered from any of 16 symptoms including chest pain, back pain, blurred vision, cough for extended period of time that does not respond to treatment, frequent urination, lesions, pain in stool, seizures or fainting, difficulty urinating, vomit blood, weakness, sudden weight loss, oral ulcers, blood in sputum and pain in limbs. If the respondent reported suffering from any of these symptoms, they were asked whether they sought treatment for the symptom. We used this information to develop our measure of medical care use or treatment-seeking behaviour.

Households with a hospitalisation in the year prior to the survey were asked to identify the cause of hospitalisation from a list of 33 causes, translated into laymen's

terms. Interviewers were able to verify self-reported cause of hospitalisation with hospitalisation records available at time of interview from about two-thirds of participants. We used this information to identify which hospitalisation were from a VAS covered or non-VAS condition. We used the reported facility where the hospitalisation took place to identify whether tertiary care was likely to be provided.

The household survey asked respondents with hospitalisations to provide details about the facility, staff and their satisfaction with the care provided. Respondents were also asked about posthospitalisation outcomes including infections that occurred and whether they had to be rehospitalised for the same condition. To measure changes in well-being, respondents were asked to rate several aspects of well-being 'a few days' prior to the hospitalisation and to rate the same aspects on the day of the survey. Specifically, respondents were asked to rate the following six characteristics from 1 to 5 (5 being the highest level of well-being): ability to conduct usual activities, ability to conduct self-care, walking ability, anxiety level, pain level and overall health status (see online supplementary appendix part 3 for full questions). We used this information to estimate the change in well-being after the hospitalisation.

ASHA survey

In addition to the enumeration and household surveys, the study team interviewed one community health worker (Asha) in each village (sample size=572). We collected village-level information on demographics, socioeconomic characteristics and health behaviours.

Census

We used two existing data sets to characterise differences or similarities between VAS-eligible and VAS-ineligible areas. We used the latest available 2001 census for data on demographic indicators including fraction of population less than 6 years of age, fraction from historically disadvantaged communities (referred to as scheduled caste or tribe), female literacy rate and fraction employed. We used the third round of the District Level Household Survey conducted in our study area between December of 2007 and March of 2008 for data on mortality rates prior to VAS implementation. The District Level Household Survey is an ongoing survey commissioned by the government of India that surveys about 1500 households in each district. We used responses to a question, which asked respondents about any deaths in the family since January 2004 to characterise baseline mortality rates in the study districts.

Statistical analysis

We first evaluated differences between VAS-eligible and VAS-ineligible villages. We focused on differences in demographics, mortality, health-related behaviours, and socioeconomic or development indicators. Demographic indicators were extracted from the 2001 census, and

baseline mortality indicators were extracted from the 2007/2008 District Level Household Survey. Indicators for health-related behaviours were extracted from the Asha survey and included whether the majority of men used tobacco or were heavy drinkers. Development indicators were also extracted from the Asha survey and included village availability of piped water, electricity, banks, an all weather road, government primary health centres and private clinics.

Next, we compared the proportion of respondents that sought treatment for any of the 16 recorded symptoms (conditional on experiencing the symptom) in villages that were eligible for VAS to villages that were ineligible for VAS. We combined symptoms into three broad categories in order to increase the power of our estimates. First, we measured differences in seeking treatment for any of the 16 symptoms. Next, we grouped symptoms by whether they were potentially associated with cardiac conditions (eg, chest pain) since (1) a majority of the procedures reimbursed by VAS during the study period were for cardiac conditions and (2) beneficiaries can more easily match the symptom (chest pain) to the disease condition (heart disease) for cardiac conditions. This helps to identify whether any differences are indeed a result of VAS or some other confounding difference between eligible and ineligible villages. We used logit regression models for these estimates and controlled for village-level and household-level characteristics. Village-level characteristics included access to piped water; all weather road in village; distance to nearest town; share of men who are heavy drinkers; share of people who use tobacco; whether there is a primary care clinic, hospital or private health centre; availability of electricity; access to a bank; and literacy rate. Household-level controls included age, gender, income, land ownership, main source of income and self-reported health status. We also included weights to adjust for oversampling of households with hospitalisations. These weights ensure that our analysis is representative of the population in the sampled villages.

Next, we estimated the impact of VAS on posthospitalisation well-being. We estimated this only for hospitalisations resulting from illnesses covered by VAS. Specifically, we measured differences in the change in self-reported well-being from prehospitalisation to post-hospitalisation between respondents in eligible versus ineligible villages. Therefore, the dependent variable in this analysis is the difference between the well-being reported a few days before the hospitalisation and the well-being reported the day of the survey. We estimated this effect for all hospitalisations as well as for hospitalisations at tertiary care facilities. The latter are more likely to have been covered by VAS. We used ordinary least squares to control for differences in the composition of illnesses that led to the hospitalisation and for differences in age, gender, income and literacy. In addition to the difference-in-differences analysis described

above, we also conducted an analysis of covariance for comparison.

Finally, we measured differences in postoperation infections and rehospitalisation rates. We used logistic regression for these estimates and controlled for illness composition, age, gender, income and literacy. SEs were clustered at the village level in all analyses to account for intravillage correlation in the error term.

RESULTS

Baseline data

We found no pre-existing differences in mortality rates (measured during 2004–2008) between treatment (north of border and eligible for VAS) and control (south of border and ineligible for VAS) villages (table 2). Socioeconomic and health behaviour characteristics were also balanced on all but one measure (table 2). The only significant difference was that a bank was available in a greater proportion of control villages (37.7% compared with 25.7% of treatment villages, $p=0.002$).

Treatment-seeking behaviour

We found that about two-thirds of households reported at least one of the symptoms, but the prevalence of recorded symptoms was nearly identical on either side of the eligibility border. However, households eligible for VAS were 4.4 percentage points (95% CI 0.7 to 8.2; 6.76% increase; $p=0.022$) more likely to seek treatment for their symptoms (table 3). The increase in treatment seeking was more pronounced and more statistically

Table 2 Village-level development and health-related characteristics

	VAS eligible	VAS ineligible	p Value
Mortality rate (2004–2008)*			
Any household member	14.5%	14.0%	0.590
Female aged 15–49	1.4%	1.3%	0.771
Development indicators†			
Piped water	49.7%	48.0%	0.684
Electricity in majority of households	95.0%	92.7%	0.236
Bank in village	25.7%	37.7%	0.002
Distance to nearest town (km)	13.3	12.3	0.176
All weather road in village	85.3%	87.3%	0.477
Primary health centre in village	22.3%	20.0%	0.485
Private clinic in village	45.3%	41.7%	0.366

*Data are from the District Level Household Survey (N=6346 households). Mortality rates are calculated by taking the share of the households with a death since 1 January 2004 using District Level Household Survey district household survey weights.

†Data are from the Asha survey (N=572 villages). VAS, Vajpayee Arogyashree Scheme.

Table 3 Fraction of respondents that sought care for symptoms by VAS eligibility

Symptom	VAS ineligible (N=2209), %	VAS eligible (N=2250), %	Marginal effects from logit regressions (%)	
			Difference	Adjusted difference†
Any symptom‡	65.31	69.73	4.42** (0.7 to 8.2)	4.96** (1.0 to 8.9)
Symptoms cardiac conditions§	62.32	66.71	4.37** (0.1 to 8.7)	5.41** (0.9 to 9.9)
Symptoms of non-cardiac conditions¶	58.2	62.16	3.92* (−0.6 to 8.4)	3.87* (−0.6 to 8.4)

Estimates are from logit regression models.

95% CIs are in parentheses.

**p<0.05.

†Village-level adjustments include: access to piped water; all weather road in village; distance to nearest town; share of men who are heavy drinkers; share of people who use tobacco; whether there is a primary care clinic, hospital or private health centre; availability of electricity; access to a bank; and literacy rate. Household-level controls include age, gender, income, land ownership, main source of income and self-reported health status.

‡Includes all symptoms described in notes 2 and 3.

§Includes symptoms of chest pain.

¶Includes symptoms of back pain, blurred vision, cough for extended period of time that does not respond to treatment, frequent urination, lesions, pain in stool, seizures or fainting, difficulty urinating, vomit blood, weakness, sudden weight loss, oral ulcers, blood in sputum, pain in limbs.

VAS, Vajpayee Arogyashree Scheme.

significant for symptoms associated with cardiac conditions at 4.38 percentage points (95% CI 0.1 to 8.7; 7.04% increase; p=0.046) than for non-cardiac symptoms at 3.92 percentage points (6.4%, p=0.085). Results for cardiac symptoms and the difference between cardiac and non-cardiac symptom were even more pronounced when we controlled for differences in access to health infrastructure, development indicators, demographics and SES. Although the effect of VAS was shown to be larger for cardiac conditions, the difference in effects was not statistically significant.

Postoperation well-being

Respondents from VAS-eligible villages reported greater improvements in well-being after the hospitalisation in all categories and they were statistically significant in three of the six categories (walking ability, pain and anxiety; table 4). When we control for illness composition, results are similar; however, when we include controls for demographics and village-level fixed effects, the results reduce slightly in magnitude and significance.

Postoperative infections and readmissions

There were substantial differences in postoperative infections and readmissions between VAS-eligible and VAS-ineligible hospitalisation (table 5). Respondents eligible for VAS were 6.74 percentage points less likely to report any infection after their stay at a tertiary care facility (95% CI −13.1 to −0.36; 88% reduction) and 15.8 percentage points less likely to have to be rehospitalised after the initial hospitalisation (95% CI −27.7 to −3.9, 48% reduction). Results increased in magnitude when we controlled for differences in illness composition, age, gender, income and literacy between eligible and non-eligible areas, although we lose some statistical power due to the small sample of tertiary care hospitalisation.

Sensitivity analysis

We conducted a series of sensitivity analyses to address potential concerns and sources of bias. The first concern we addressed was the possibility that there was measurement error in illnesses reported as reasons for hospitalisation, which could bias our estimates for quality of care and posthospitalisation well-being. To

Table 4 Effect of VAS on postoperation well-being

	No controls (N=173)	Controls for illness composition (N=173)	Controls for illness composition demographic characteristics† (N=173)
Self-care	0.208 (0.251)	0.108 (0.268)	−0.0442 (0.267)
Usual activities	0.324 (0.244)	0.212 (0.263)	0.0458 (0.276)
Walking ability	0.765*** (0.248)	0.700*** (0.261)	0.605** (0.273)
Pain	0.778*** (0.228)	0.660*** (0.244)	0.559** (0.246)
Anxiety	0.464* (0.242)	0.451* (0.261)	0.387 (0.272)
Overall health	0.471** (0.223)	0.337 (0.224)	0.185 (0.220)

SEs clustered at the village level in parentheses.

***p<0.01, **p<0.05, *p<0.1.

†Demographic controls include age, gender, income, literacy.

Table 5 Effect of VAS on postoperative outcomes (tertiary care facilities)

Quality of outcomes	Non-VAS (%)	VAS (%)	Marginal effects from logit regressions (%)		
			No controls	Controls for illness composition	Controls for illness composition and demographic characteristics
Occurrence of infections	7.70	0.90	−6.74** (−13.1 to 0.36)	−8.04 (−17.8 to 0.17)	−9.4* (−20.2 to 1.4)
Been rehospitalised since the first hospitalisation	32.60	16.80	−15.8*** (−27.7 to −3.9)	−16.0*** (−27.4 to −4.6)	−16.5*** (−28.7 to −4.3)

N=199.

Marginal effects and SEs estimated using the delta method.

CIs in parentheses.

Demographics=age, gender, income and literacy.

VAS, Vajpayee Arogyashree Scheme.

address this we restricted our analysis to hospitalisations that could be verified through hospitalisation records available at the household (about two-thirds of the full sample). Results were unchanged with this restriction (see online supplementary appendix tables A1 and A2). Next, we estimated models for infections, readmissions and posthospitalisation well-being for non-VAS covered hospitalisations (see online supplementary appendix tables A3 and A4). We expected smaller differences in outcomes across VAS-eligible and VAS-ineligible areas for non-VAS conditions as these hospitalisations were not covered by VAS. However, it is possible to get some spill-over effects for non-VAS conditions if VAS patients influenced the hospital choice of patients in the same area or village. For example, a patient with a cardiac condition in a VAS-eligible area might narrate his or her experience to others in their village and thus influence the hospital choice of others with non-VAS conditions. Also VAS empanelled hospitals organised health camps in VAS-eligible villages. It is possible that these health camps increased awareness about VAS empanelled hospitals and thus influenced hospital choice of all patients irrespective of whether their condition was covered by VAS. We found that the magnitude of the point estimates for infections and readmissions were somewhat smaller for non-VAS conditions compared with VAS conditions. However, the estimates are imprecise and statistically indistinguishable from estimates for VAS covered conditions. We get qualitatively similar results for post-hospitalisation well-being, with positive but imprecise estimates. Next, we sought to understand the extent to which improvements in posthospitalisation outcomes were driven by changes in patient experience during the hospitalisation. We found that patients in VAS-eligible areas were more likely to reports that (1) the hospital was clean, (2) discharge instruction were given, (3) doctor advised on follow-up care, (4) patient had contact information for the doctor and (5) patients were more satisfied. Patients also reported greater satisfaction with the quality of treatment. Although, these differences are suggestive of improved quality of care for VAS

patients; the differences were not statistically significant (see online supplementary appendix table A5).

Finally, it is possible that patients who seek tertiary care in the absence of insurance are sicker or worse off than patients who seek tertiary care that is covered by insurance. Therefore, our estimates of postoperative outcomes could be overstated. To address this, we examine the difference in self-reported preoperative well-being between VAS-eligible and VAS-ineligible areas using the same analytical strategy. We find the opposite, that VAS-eligible hospitalisations had lower self-reported well-being prior to their hospitalisation (see online supplementary appendix table A6). Therefore, any bias in post-operative outcomes driven by preoperative differences is likely driving our results towards the null.

DISCUSSION

Previous work demonstrated that VAS led to increased utilisation of tertiary care along with mortality reductions from covered conditions. This paper adds new insight into why these outcomes may have been observed. First, we demonstrated that there are several pathways through which VAS may have improve health, aside from increasing utilisation of tertiary care services. We have shown that people in VAS-eligible villages were significantly more likely to seek treatment for symptoms, particularly those known to be covered by VAS, which could have led to greater and earlier medical intervention. We also found that VAS patients had better post-operative outcomes and experienced better posthospitalisation well-being. All of these mechanisms help to support the mortality reductions from VAS previously reported.¹³

Combining our estimates of increased treatment seeking induced by VAS with estimates from prior literature on the probability of myocardial infarction (MI) conditional experiencing chest pain (0.053),¹⁵ the relative risk of MI conditional on getting treatment (aspirin, β -blocker, ACE inhibitors and statins; 0.27),¹⁶ and the risk of mortality from MI in developing countries

(0.33),¹⁷ we roughly estimate that VAS's effect on treatment seeking could have led to a 2–6% reduction in mortality from cardiac conditions depending on how many people seeking treatment actually get treatment (see online supplementary appendix part 2 for details on calculation). Prior work reports that VAS led to a 64% reduction in mortality from VAS covered conditions and a 75% reduction in mortality from cardiac conditions. Therefore, although non-trivial, the reduction in mortality generated from increased treatment seeking is likely to have played only a small role in the overall mortality reduction attributable to VAS.

Increased treatment seeking might arise as a result of increased access to otherwise costly tertiary care, which might increase the perceived value of seeking treatment for symptoms potentially requiring tertiary care. For example, poor patients with chest pain might be more motivated to visit a doctor if they know that they do not have to pay out of pocket for any follow-up cardiac surgeries or major procedures. Some of the effects might also be due to health camps organised by VAS that screened patients for conditions requiring tertiary care. In this analysis, we are unable to untangle increased demand for treatment from increased availability of screening. If increased access to screening is driving the increase in treatment seeking we observe, this would imply that mandating empanelled tertiary care providers to implement health screening outreach could be an effective strategy for increasing screening rates and improving health. In any case, such an increase in treatment-seeking behaviour should be taken into account when considering the benefits of programmes similar to VAS as greater diagnosis and treatment of disease can significantly reduce premature morbidity and mortality.

VAS also made a concerted effort to empanel state-of-the-art facilities. Therefore, VAS beneficiaries might have sought care at higher quality facilities than those ineligible for VAS. This might explain why we observe a lower infection rate and better posthospitalisation well-being among VAS beneficiaries. It is also possible that insured patients received better care than uninsured patients within the same facility. Another possibility is that empanelled facilities were able to improve quality as a result of VAS since they might get higher reimbursement for treating poor patients under VAS since such patients are often unable to pay. Such additional revenue could be used to invest in quality infrastructure. This effect has been observed in the USA where expansion of Medicaid was shown to influence the adoption of neonatal intensive care units.^{18 19} Regardless of the mechanism, our findings suggest that access to tertiary care insurance might lead to better quality of care received.

This work has several limitations. First, the study was quasi-experimental in that VAS was not randomly assigned to villages. This posed several methodological challenges, but also presented opportunities for

employing rigorous approaches designed to reduce selection bias. The northern portion of Karnataka was selected for coverage because the state government felt that Karnataka's northern regions were in greater need of tertiary healthcare. The extent to which this is true is unknown, but for that reason we selected villages on the southern border of the eligibility area and matched them to villages just south of the eligibility boundary. The baseline data support our assumption that villages just north and just south of the border were similar on relevant characteristics including access to primary care.

Second, we show that VAS-eligible patients that had a tertiary care hospitalisation reported worse well-being prior to the hospitalisation. Therefore, even though our difference-in-differences estimates show a relative improvement in well-being among eligible patients compared with ineligible patients, it is unclear if this is a result of better quality of care as a result of VAS or simply regression to the mean (posthospitalisation well-being was similar between eligible and ineligible patients).

Third, due to data limitations, we cannot untangle whether VAS patients sought care at higher quality facilities or whether they received better quality care within the same set of facilities. However, since VAS empanelled mostly state-of-the-art expensive facilities, we expect that non-VAS patients were not able to afford VAS empanelled facilities at the same rate as VAS beneficiaries, and that the quality difference is occurring across facilities, not within facilities.

Fourth, it is not clear that the increase in treatment-seeking behaviour that we find is a good thing since we are unable to directly link it to better outcomes. If the increased treatment seeking does not lead to better outcomes, then it could be wasteful.

Fifth, we could not measure directly which hospitalisations were covered by VAS, only whether the hospitalisation was related to a condition whose management was potentially covered by VAS. In making this leap, we likely analysed hospitalisations that were outside of the scope of VAS together with the truly covered services, thus diluting our effect size estimates for postoperative outcomes.

Sixth, we are unable to assess whether it was increased demand for treatment (through lower cost and higher value of diagnosis) or increased supply of primary care (through health camps) that increased the share of people who had sought treatment for a symptom. Future work should isolate these two channels by holding one constant.

It was previously demonstrated that VAS created substantial health benefits through reduced mortality. This work shows that mortality reductions are likely a result not only of increased utilisation of covered services, but also increased treatment seeking and access to better quality facilities. Such indirect effects of insurance should be considered when insurance schemes are assessed in the future.

Author affiliations

¹Sol Price School of Public Policy and School of Pharmacy, University of Southern California, Los Angeles, California, USA

²Leonard D. Schaeffer Center for Health Policy and Economics, University of Southern California, Los Angeles, California, USA

³National Bureau of Economic Research, Cambridge, Massachusetts, USA

⁴School of Public Health, University of California Berkeley, Berkeley, California, USA

Contributors NS led all aspects of the study. ZW conducted the analysis and preparation of the manuscript.

Funding This project was funded by the Health Results Innovation Trust Fund at the World Bank and the National Institute on Aging (Grant #T32-AG000246). The grant proposal was peer reviewed for scientific merit.

Competing interests None declared.

Ethics approval The study was approved by the IRB based at the Center for Public Policy, Indian Institute of Management Bangalore. The IRB's NIH Registration Number is IORG0004307.

Provenance and peer review Not commissioned; externally peer reviewed.

Data sharing statement Technical appendix, statistical code and data used in this study are available on request from the corresponding author at nsood@healthpolicy.usc.edu.

Open Access This is an Open Access article distributed in accordance with the Creative Commons Attribution Non Commercial (CC BY-NC 4.0) license, which permits others to distribute, remix, adapt, build upon this work non-commercially, and license their derivative works on different terms, provided the original work is properly cited and the use is non-commercial. See: <http://creativecommons.org/licenses/by-nc/4.0/>

REFERENCES

- Escobar M-L, Griffin CC, Shaw RP. *The impact of health insurance in low-and middle-income countries*. Brookings Institution Press, 2011.
- Palmer N, Mueller DH, Gilson L, *et al*. Health financing to promote access in low income settings—how much do we know? *Lancet* 2004;364:1365–70.
- Gruber J, Hendren N, *et al*. Demand and reimbursement effects of healthcare reform: health care utilization and infant mortality in Thailand. National Bureau of Economic Research, 2012.
- Wagstaff A, Lindelow M, Jun G, *et al*. Extending health insurance to the rural population: an impact evaluation of China's new cooperative medical scheme. *J Health Econ* 2009;28:1–19.
- King G, Gakidou E, Imai K, *et al*. Public policy for the poor? A randomised assessment of the Mexican universal health insurance programme. *Lancet* 2009;373:1447–54.
- Powell-Jackson T, Hanson K, Whitty CJ, *et al*. Who benefits from free healthcare? Evidence from a randomized experiment in Ghana. *J Dev Econ* 2014;107:305–19.
- Ansah EK, Narh-Bana S, Asiamah S, *et al*. Effect of removing direct payment for health care on utilisation and health outcomes in Ghanaian children: a randomised controlled trial. *PLoS Med* 2009;6:e1000007.
- Wang H, Yip W, Zhang L, *et al*. The impact of rural mutual health care on health status: evaluation of a social experiment in rural China. *Health Econ* 2009;18(Suppl 2):S65–82.
- Fink G, Robyn PJ, Sié A, *et al*. Does health insurance improve health?: evidence from a randomized community-based insurance rollout in rural Burkina Faso. *J Health Econ* 2013;32:1043–56.
- Dow WH, Schmeer KK. Health insurance and child mortality in Costa Rica. *Soc Sci Med* 2003;57:975–86.
- Kenkel DS. Chapter 31 prevention. In: Anthony JC, Joseph PN, eds. *Handbook of health economics*. Elsevier, 2000:1675–720.
- Sood N, Wagner Z, Wu Y. The Impact of Insurance on HIV Testing. *American Journal of Health Economics* 2015;1: 515–36.
- Sood N, Bendavid E, Mukherji A, *et al*. Government health insurance for people Below Poverty Line in India: quasi-experimental evaluation of insurance and health outcomes. *BMJ* 2014;349:g5114.
- Suvarna Arogya Suraksha Trust Website. <http://www.sast.gov.in/home/Downloads.html> (accessed 7 Aug 2015).
- Prabhakaran D, Shah P, Chaturvedi V, *et al*. Cardiovascular risk factor prevalence among men in a large industry of northern India. *Natl Med J India* 2005;18:59–65.
- Gaziano TA, Opie LH, Weinstein MC. Cardiovascular disease prevention with a multidrug regimen in the developing world: a cost-effectiveness analysis. *Lancet* 2006;368:679–86.
- Gaziano T, Reddy KS, Paccaud F, *et al*. *Cardiovascular disease. Disease control priorities in developing countries*. Washington DC: World Bank Publications, 2006.
- Freedman S. Health insurance and hospital technology adoption. *Adv Health Econ Health Serv Res* 2012;23:177–98.
- Freedman S, Lin H, Simon K. Public health insurance expansions and hospital technology adoption. *J Public Econ* 2015;121: 117–31.

The Impact of Health Insurance for Tertiary Care on Postoperative Outcomes and Seeking Care for Symptoms: Quasi-Experimental Evidence From Karnataka, India

Neeraj Sood¹⁻³ and Zachary Wagner⁴

[Supplementary Appendix]

Part 1. Supplementary Tables

Table A1 . Effect of VAS on post-operation well being (Verified Hospitalizations Only)

	No Controls (N=118)	Controls for Illness Composition (N=118)	Controls for Illness Composition Demographic Characteristics ¹ (N=118)
Self Care	0.162 (0.55)	0.0672 (0.22)	-0.114 (-0.36)
Usual Activities	0.457 (1.60)	0.387 (1.34)	0.181 (0.56)
Walking ability	0.747*** (2.67)	0.723** (2.55)	0.594* (1.89)
Pain	0.652** (2.31)	0.586** (2.13)	0.390 (1.38)
Anxiety	0.294 (0.98)	0.327 (1.02)	0.229 (0.64)
Overall Health	0.367 (1.42)	0.289 (1.18)	0.104 (0.40)

***, $p < .01$, ** $p < .05$, * $p < .1$

Standard Errors clustered at the village level in parentheses

¹ Demographic controls include age, gender, income, literacy.

Table A2. Effect of VAS on Hospital Quality and Post-Operation Outcomes (Verified Hospitalizations Only)

			Odds Ratios		
				Controls for Illness Composition	Controls for Illness Composition and Demographic Characteristics
Quality of Outcomes	Non-VAS	VAS	No Controls	Composition	
Occurrence of Infections	9.80%	1.40%	.133%* (.015, 1.120)	.137* (.015, 1.28)	0.062 (.002, 1.72)
Been re-hospitalized since the first hospitalization	37.70%	20.00%	.413** (.199, .857)	.388*** (.179, .837)	0.347** (.155, .780)

N=131

Odds ratios were estimated using logistic regression

Confidence intervals in parentheses

Table A3. Post-operation well being for Non-VAS covered conditions

	No Controls	Controls for Illness Composition	Controls for Illness Composition Demographic Characteristics ¹
	(N=87)	(N=87)	(N=87)
Self Care	-0.0476 (-0.08)	-0.0510 (-0.07)	-0.517 (-1.15)
Usual Activities	0.503 (0.78)	0.375 (0.50)	-0.0424 (-0.09)
Walking ability	1.093 (1.57)	1.069 (1.32)	0.748 (1.41)
Pain	1.007* (1.91)	0.806 (1.25)	0.569 (1.27)
Anxiety	1.143* (1.86)	1.203* (1.71)	0.836* (1.74)
Overall Health	0.692 (1.06)	0.624 (0.82)	0.321 (0.70)

***, p<.01, **p<.05, *p<.1

Standard Errors clustered at the village level in parentheses

¹ Demographic controls include age, gender, income, literacy.

Table A4. Post-Operation Outcomes for uncovered conditions

	Odds Ratios				
	Non-VAS	VAS	No Controls	Controls for Illness Composition	Controls for Illness Composition and Demographic Characteristics
Quality of Outcomes					
Occurrence of Infections	4.7%	2.2%	.456 (.039, 5.33)	.432 (.040, 4.71)	0.221 (.006, 7.42)
Been re-hospitalized since the first hospitalization	29.5%	13.0%	.358 (.108, 1.19)	.267* (.056, 1.27)	0.283 (.056, 1.43)

N=90
Odds ratios were estimated using logistic regression
Confidence intervals in parentheses

Table A5. Post-Operation Outcomes for uncovered conditions

			Odds Ratios		
				Controls for Illness Composition	Controls for Illness Composition and Demographic Characteristics
Quality of Outcomes	Non-VAS	VAS	No Controls		
Satisfied with hospitalization	59.8%	67.3%	1.384 (0.780, 2.457)	1.421 (0.784, 2.574)	1.386 (0.749, 2.566)
Hospital was clean	91.3%	94.4%	1.603 (0.549, 4.685)	1.360 (0.432, 4.278)	1.280 (0.360, 4.552)
Discharge instructions given	82.2%	87.3%	1.480 (0.677, 3.237)	1.416 (0.585, 3.427)	1.142 (0.426, 3.060)
Patient has contact information of doctor	34.8%	45.8%	1.584 (0.870, 2.883)	1.529 (0.824, 2.837)	1.612 (0.836, 3.110)
Doctor advised follow-up visit	75.3%	80.2%	1.330 (0.649, 2.725)	1.308 (0.604, 2.829)	1.343 (0.605, 2.983)

N=199

Odds ratios were estimated using logistic regression

Confidence intervals in parentheses

Table A6. Pre-operation well being

	No Controls	Controls for Illness Composition	Controls for Illness Composition Demographic Characteristics ¹
	(N=173)	(N=173)	(N=173)
Self Care	-0.243 (0.204)	-0.143 (0.214)	-0.0853 (0.220)
Usual Activities	-0.361* (0.203)	-0.251 (0.209)	-0.164 (0.218)
Walking ability	-0.535*** (0.199)	-0.447** (0.199)	-0.397* (0.205)
Pain	-0.578*** (0.187)	-0.456** (0.188)	-0.450** (0.190)
Anxiety	-0.235 (0.194)	-0.181 (0.203)	-0.204 (0.209)
Overall Health	-0.396** (0.182)	-0.257 (0.188)	-0.200 (0.191)

***, $p < .01$, ** $p < .05$, * $p < .1$

Standard Errors clustered at the village level in parentheses

¹ Demographic controls include age, gender, income, literacy.

Part 2: Calculations for mortality reduction estimates

Table A8 presents inputs used to calculate mortality reductions as a results of increased treatment seeking induced by VAS.

Table A8. Inputs For Mortality Reduction Calculation

Inputs	Estimate	Source
Share That Seek Treatment		
Seek Treatment VAS	69.73%	Authors
Seek Treatment non-VAS	65.31%	Authors
% Effect of VAS	4.42%	Authors
Effect of Seeking Treatment		
RR of MI with Aspirin, beta-blocker, ACEI, and statin	0.273	Gaziano et al. (2006)
Probability of MI conditional on Chest Pain	0.053	Prabhakaran et al. (2005)
R of Mortality if have MI (30 Day)	0.33	Gaziano et al. (2006)

We used the following formula to estimate the percentage point mortality reduction.

$$\Delta Mortality = P(MI) * Risk(MI) * (\%(Treat) * RR(Treat) * Effect(VAS) + ((1 - \%(Treat)) * Effect(VAS) - Effect(VAS))$$

Where $\Delta Mortality$ is the percentage point reduction in mortality as a result of the 4.42 percentage point increase in treat seeking, $P(MI)$ is the probability of having an MI conditional on chest pain, $Risk(MI)$ is the risk of 30-day mortality conditional on having an MI, $\%(Treat)$ is the share of the population that seeks treatment that actually receives treatment, $RR(Treat)$ is the relative risk of MI for treatment relative to no treatment, and $Effect(VAS)$ is the % effect of VAS on treatment seeking. We then use the following to estimate the % reduction.

$$\% \Delta Mortality = \Delta Mortality / (P(MI) * Risk(MI) * SeekTreat_{VAS} * RR(Treat) * \%(Treat)) + (P(MI) * Risk(MI) * SeekTreat_{VAS} * (1 - \%(Treat)) + (P(MI) * Risk(MI) * (1 - SeekTreat_{VAS}))$$

Where the denominator represent the % of the population in non-VAS eligible villages estimated to die from an MI. Below we show that if 50% of the population who sought treatment were to receive treatment, we would estimate a 2.1% reduction in mortality from MI. However, if 100% of people that sought treatment received treatment, we estimate a 6.1% reduction in mortality from MI>

Table A9. Estimated Mortality Reduction Under Different Assumptions of Treatment Received Conditional on Seeking Treatment	
% That receive treatment conditional on seeking treatment	Mortality Reduction
50%	2.1%
75%	3.4%
100%	6.1%

Part 3. Questions to Assess Post-Hospitalization Well Being

Q. No ಕ್ರ.ಸಂ.	Questions ಪ್ರಶ್ನೋತ್ತರಗಳು	Instruction ಸೂಚನೆಗಳು	Column coding ಕಾಲಂ ಕೋಡಿಂಗ್																		
3	<p>Suppose you twisted your ankle while working at home or in the field. You could walk a few steps with the twisted ankle but had to take a break after a few steps because of pain. You were unable to walk briskly or run because of the pain in your ankle. Please use the stones to rate your ability to walk in this situation. Remember 5 stones means the best possible situation or you can walk perfectly well and 1 stone means the worst possible situation or you are unable to walk at all.</p> <p>ಮನೆಯಲ್ಲಿ ಅಥವಾ ಬಯಲಿನಲ್ಲಿ ನಡೆಯುವಾಗ ಒಂದು ಪಕ್ಷ ನಿಮ್ಮ ಪಾದದ ಕೀಲು ಉಳುಕಿದೆ. ನೀವು ಉಳುಕಿದ ಪಾದದೊಂದಿಗೆ ಕೆಲವು ಹೆಜ್ಜೆ ನಡೆಯಬಲ್ಲೀರಿ ಆದರೆ ನೋವಿನ ಕಾರಣದಿಂದ ಕೆಲವು ಹೆಜ್ಜೆಗಳ ನಂತರ ನೀವು ವಿಶ್ರಾಂತಿ ಪಡೆಯಬೇಕು. ನಿಮ್ಮ ಪಾದದ ಕೀಲಿನಲ್ಲಿನ ನೋವಿನ ಕಾರಣದಿಂದ ನೀವು ವೇಗವಾಗಿ ನಡೆಯಲು ಅಥವಾ ಓಡಲು ನಿಮಗೆ ಆಗುವುದಿಲ್ಲ. ಈ ಪರಿಸ್ಥಿತಿಯಲ್ಲಿ ನಡೆಯಲು ನಿಮ್ಮ ಸಾಮರ್ಥ್ಯವನ್ನು ರೇಟ್ ಮಾಡಲು ದಯವಿಟ್ಟು ಕಲ್ಲುಗಳನ್ನು ಉಪಯೋಗಿಸಿ. ನೆನಪಿಟ್ಟುಕೊಳ್ಳಿ 5 ಕಲ್ಲುಗಳು ಎಂದರೆ ಸಾಧ್ಯತೆ ಇರುವ ಉತ್ತಮ ಸ್ಥಿತಿ ಅಥವಾ ನೀವು ಪರಿಪೂರ್ಣವಾಗಿ ಚೆನ್ನಾಗಿ ನಡೆಯಬಲ್ಲೀರಿ ಮತ್ತು 1 ಕಲ್ಲು ಎಂದರೆ ಸಾಧ್ಯತೆ ಇರುವ ಕೆಟ್ಟ ಸ್ಥಿತಿ ಅಥವಾ ನಿಮಗೆ ನಡೆಯಲು ಆಗುವುದಿಲ್ಲ.</p> <p>RECORD NUMBER OF STONES IN BOWL IN THE GRID BELOW</p> <p>ಕೆಳಗಿನ ಗ್ರಿಡ್ ಬೌಲ್ ನಲ್ಲಿರುವ ಕಲ್ಲುಗಳ ಸಂಖ್ಯೆಯನ್ನು ಬರೆಯಿರಿ.</p>																				
	<table><tr><td>Person 1 ವ್ಯಕ್ತಿ ೧</td><td>5</td><td>4</td><td>3</td><td>2</td><td>1</td></tr><tr><td>Person 2 ವ್ಯಕ್ತಿ ೨</td><td>5</td><td>4</td><td>3</td><td>2</td><td>1</td></tr><tr><td>Person 3 ವ್ಯಕ್ತಿ ೩</td><td>5</td><td>4</td><td>3</td><td>2</td><td>1</td></tr></table>	Person 1 ವ್ಯಕ್ತಿ ೧	5	4	3	2	1	Person 2 ವ್ಯಕ್ತಿ ೨	5	4	3	2	1	Person 3 ವ್ಯಕ್ತಿ ೩	5	4	3	2	1		838-840
	Person 1 ವ್ಯಕ್ತಿ ೧	5	4	3	2	1															
	Person 2 ವ್ಯಕ್ತಿ ೨	5	4	3	2	1															
Person 3 ವ್ಯಕ್ತಿ ೩	5	4	3	2	1																
3	<p>Now suppose your ankle healed after a few days and you are able to walk and run normally. Please add or remove stones to rate your ability to walk.</p> <p>ಈಗ ಕೆಲವು ದಿನಗಳ ನಂತರ ನಿಮ್ಮ ಪಾದದ ಕೀಲು ವಾಸಿ ಆಗಿದೆ ಮತ್ತು ನಿಮಗೆ ಸಾಮಾನ್ಯರಂತೆ ನಡೆಯಲು ಅಥವಾ ಓಡಲು ಆಗುತ್ತದೆ. ನಿಮ್ಮ ನಡೆಯುವ ಸಾಮರ್ಥ್ಯ ಕೈಲಿಂಕ ನೀಡಲು ದಯವಿಟ್ಟು ಕಲ್ಲುಗಳನ್ನು ಸೇರಿಸಿ ಅಥವಾ ತೆಗೆದುಹಾಕಿ.</p> <p>RECORD NUMBER OF STONES IN BOWL IN THE GRID BELOW</p> <p>ಕೆಳಗಿನ ಗ್ರಿಡ್ ಬೌಲ್ ನಲ್ಲಿರುವ ಕಲ್ಲುಗಳ ಸಂಖ್ಯೆಯನ್ನು ಬರೆಯಿರಿ.</p>																				
	<table><tr><td>Person 1 ವ್ಯಕ್ತಿ ೧</td><td>5</td><td>4</td><td>3</td><td>2</td><td>1</td></tr><tr><td>Person 2 ವ್ಯಕ್ತಿ ೨</td><td>5</td><td>4</td><td>3</td><td>2</td><td>1</td></tr><tr><td>Person 3 ವ್ಯಕ್ತಿ ೩</td><td>5</td><td>4</td><td>3</td><td>2</td><td>1</td></tr></table>	Person 1 ವ್ಯಕ್ತಿ ೧	5	4	3	2	1	Person 2 ವ್ಯಕ್ತಿ ೨	5	4	3	2	1	Person 3 ವ್ಯಕ್ತಿ ೩	5	4	3	2	1		841-843
	Person 1 ವ್ಯಕ್ತಿ ೧	5	4	3	2	1															
	Person 2 ವ್ಯಕ್ತಿ ೨	5	4	3	2	1															
Person 3 ವ್ಯಕ್ತಿ ೩	5	4	3	2	1																
3	<p>Interviewer, please verify that the number of stones in the bowl for Q343 was greater than the number of stones in the bowl for Q342.</p> <p>ಸಂದರ್ಶಕ, Q343ನ ಬಟ್ಟಲಿನಲ್ಲಿರುವ ಕಲ್ಲುಗಳ ಸಂಖ್ಯೆಯು Q342ಯಲ್ಲಿ ಬಟ್ಟಲಿನಲ್ಲಿದ್ದ ಕಲ್ಲುಗಳ ಸಂಖ್ಯೆಗಿಂತ ಹೆಚ್ಚಿದ್ದಾವಾ ಎಂದು ದಯವಿಟ್ಟು ಪರಿಶೀಲಿಸಿ.</p>																				
	<table><tr><td></td><td>Yes</td><td>No</td></tr><tr><td>Person 1 ವ್ಯಕ್ತಿ ೧</td><td>1</td><td>2</td></tr><tr><td>Person 2 ವ್ಯಕ್ತಿ ೨</td><td>1</td><td>2</td></tr><tr><td>Person 3 ವ್ಯಕ್ತಿ ೩</td><td>1</td><td>2</td></tr></table>		Yes	No	Person 1 ವ್ಯಕ್ತಿ ೧	1	2	Person 2 ವ್ಯಕ್ತಿ ೨	1	2	Person 3 ವ್ಯಕ್ತಿ ೩	1	2		844-846						
		Yes	No																		
	Person 1 ವ್ಯಕ್ತಿ ೧	1	2																		
Person 2 ವ್ಯಕ್ತಿ ೨	1	2																			
Person 3 ವ್ಯಕ್ತಿ ೩	1	2																			

(INSTRUCTIONS TO INVESTIGATOR: If answer to 344 is “No”, Please explain instructions again. Also, explain that as ability to walk was better in Q343 compared to Q342, they should have added more stones to the bowl in Q343.)

(ತನಿಖೆ ದಾರರಿಗೆ ಸೂಚನೆಗಳು: 344ನಲ್ಲಿ ಇಲ್ಲ ಎಂದು ಉತ್ತರಿಸಿದ್ದರೆ ದಯವಿಟ್ಟು ಸೂಚನೆಗಳನ್ನು ಮತ್ತೆ ವಿವರಿಸಿ. ಜೊತೆಯಲ್ಲಿ Q342ಗೆ

Q343ಹೋಲಿಸಿದಾಗ ನಡಿಗೆಯ ಸಾಮರ್ಥ್ಯವನ್ನು ವಿವರಿಸಿ, Q343ನಲ್ಲಿ ಹೆಚ್ಚು ಕಲ್ಲುಗಳನ್ನು ಸೇರಿಸಬೇಕು)

Q. No ಕ್ರ.ಸಂ.	Questions ಪ್ರಶ್ನೋತ್ತರಗಳು	Instruction ಸೂಚನೆಗಳು	Column coding ಕಾಲಂ ಕೋಡಿಂಗ್																		
3	<p>Now let's start by thinking about your health in the few days prior to the hospitalization when you were unwell (when the major procedure occurred). How would you rate your ability to do self-care activities independently such as bathing and dressing yourself? Remember, 5 stones means you had no problems bathing or dressing yourself independently. 1 stone means you could not bath or dress yourself independently and needed a caretaker to dress or bath you.</p> <p>ನೀವು ಆಸ್ಪತ್ರೆಗೆ ದಾಖಲಾಗುವ(ಮುಖ್ಯ ಕಾರ್ಯವಿಧಾನ ನಡೆದ ಸ್ಥಳ) ಕೆಲವು ದಿನಗಳ ಮುಂಚೆ ನೀವು ಆನರೋಗ್ಯರಾದ ನಿಮ್ಮ ಆರೋಗ್ಯದ ಬಗ್ಗೆ ಯೋಚಿಸುವುದರೊಂದಿಗೆ ನಾವೀಗ ಪ್ರಾರಂಭಿಸೋಣ.</p> <p>ಸ್ವತಃ ನೀವೇ ಸ್ನಾನ ಮಾಡುವುದು ಮತ್ತು ಬಟ್ಟೆಗಳನ್ನು ಧರಿಸುವುದು ಇಂತಹ ಸ್ವಯಂ ಕಾಳಜಿಯ ಚಟುವಟಿಕೆಗಳನ್ನು ಸ್ವತಂತ್ರವಾಗಿ ಮಾಡಲು ನಿಮ್ಮ ಸಾಮರ್ಥ್ಯಕ್ಕೆ ನೀವು ಹೇಗೆ ಅಂಕವನ್ನು ನೀಡುವಿರಿ.. ನೆನಪಿನಲ್ಲಿಡಿ, 5 ಕಲ್ಲುಗಳು ಎಂದರೆ ಸ್ವತಃ ನೀವು ಸ್ವತಂತ್ರವಾಗಿ ಸ್ನಾನ ಮಾಡಲು ಅಥವಾ ಬಟ್ಟೆಗಳನ್ನು ಧರಿಸಲು ನಿಮಗೆ ಯಾವುದೇ ತೊಂದರೆ ಇರಲಿಲ್ಲ ಎಂದು ಅರ್ಥ, 1 ಕಲ್ಲು ಎಂದರೆ ಸ್ವತಃ ನೀವು ಸ್ವತಂತ್ರವಾಗಿ ಸ್ನಾನ ಮಾಡಲು ಅಥವಾ ಬಟ್ಟೆ ಧರಿಸಲು ಆಗುತ್ತಿರಲಿಲ್ಲ ಮತ್ತು ನಿಮ್ಮನ್ನು ನೋಡಿಕೊಳ್ಳುವವರು ಬಟ್ಟೆ ಹಾಕಬೇಕಾದ ಅಥವಾ ನಿಮಗೆ ಸ್ನಾನ ಮಾಡಿಸಬೇಕಾದ ಅಗತ್ಯವಿತ್ತು.</p> <p>FEW DAYS BEFORE</p> <p>ಕೆಲವು ದಿನಗಳ ಮುಂಚೆ</p> <p>RECORD NUMBER OF STONES IN BOWL IN THE GRID BELOW</p> <p>ಕೆಳಗಿನ ಗ್ರಿಡ್ ಬೌಲ್ ನಲ್ಲಿರುವ ಕಲ್ಲುಗಳ ಸಂಖ್ಯೆಯನ್ನು ಬರೆಯಿರಿ.</p>																				
	<table><tr><td>Person 1 ವ್ಯಕ್ತಿ ೧</td><td>5</td><td>4</td><td>3</td><td>2</td><td>1</td></tr><tr><td>Person 2 ವ್ಯಕ್ತಿ ೨</td><td>5</td><td>4</td><td>3</td><td>2</td><td>1</td></tr><tr><td>Person 3 ವ್ಯಕ್ತಿ ೩</td><td>5</td><td>4</td><td>3</td><td>2</td><td>1</td></tr></table>	Person 1 ವ್ಯಕ್ತಿ ೧	5	4	3	2	1	Person 2 ವ್ಯಕ್ತಿ ೨	5	4	3	2	1	Person 3 ವ್ಯಕ್ತಿ ೩	5	4	3	2	1		847-849
	Person 1 ವ್ಯಕ್ತಿ ೧	5	4	3	2	1															
	Person 2 ವ್ಯಕ್ತಿ ೨	5	4	3	2	1															
Person 3 ವ್ಯಕ್ತಿ ೩	5	4	3	2	1																
3	<p>Now thinking about your health today, do you think your ability to do self-care activities independently such as bathing and dressing has improved or worsened or remained the same? If it has improved add more stones to bowl, similarly if it has worsened remove stones from the bowl. If it has remained the same just tell me that you do not want to add or remove stones from the bowl.</p> <p>ಈಗ ಈದಿನ ನಿಮ್ಮ ಆರೋಗ್ಯದ ಬಗ್ಗೆ ಯೋಚಿಸುತ್ತಾ, ಸ್ವತಃ ನೀವೇ ಸ್ನಾನ ಮಾಡುವುದು ಮತ್ತು ಬಟ್ಟೆಗಳನ್ನು ಧರಿಸುವುದು ಇಂತಹ ಸ್ವಯಂ ಕಾಳಜಿಯ ಚಟುವಟಿಕೆಗಳನ್ನು ಸ್ವತಂತ್ರವಾಗಿ ಮಾಡಲು ನಿಮ್ಮ ಸಾಮರ್ಥ್ಯವು ಉತ್ತಮವಾಗಿದೆಯೇ ಅಥವಾ ಕಳಪೆಯಾಗಿದೆಯೇ ಅಥವಾ ಅದೇ ರೀತಿ ಉಳಿದಿದೆ ಎಂದು ನೀವು ಯೋಚಿಸುವಿರಾ? ಒಂದು ಪಕ್ಷ ಅದು ಉತ್ತಮವಾಗಿದ್ದಲ್ಲಿ ಬಟ್ಟಲಿಗೆ ಹೆಚ್ಚು ಕಲ್ಲುಗಳನ್ನು ಹಾಕಿ, ಅದೇ ರೀತಿಯಲ್ಲಿ ಒಂದು ಪಕ್ಷ ಅದು ಕಳಪೆ ಆಗಿದ್ದಲ್ಲಿ ಬಟ್ಟಲಿನಿಂದ ಕಲ್ಲುಗಳನ್ನು ತೆಗೆಯಿರಿ.ಒಂದು ಪಕ್ಷ ಅದು ಹಾಗೆಯೇ ಇದ್ದರೆ, ನೀವು ಬಟ್ಟಲಿಗೆ ಕಲ್ಲುಗಳನ್ನು ಸೇರಿಸಲು ಅಥವಾ ಕಲ್ಲುಗಳನ್ನು ತೆಗೆಯಲು ಬಯಸುವುದಿಲ್ಲ ಎಂದು ಹೇಳಬೇಕು ಅವ್ವೇ,</p> <p>Today</p> <p>ಈ ದಿನ</p> <p>RECORD NUMBER OF STONES IN BOWL IN THE GRID BELOW</p> <p>ಕೆಳಗಿನ ಗ್ರಿಡ್ ಬೌಲ್ ನಲ್ಲಿರುವ ಕಲ್ಲುಗಳ ಸಂಖ್ಯೆಯನ್ನು ಬರೆಯಿರಿ.</p>																				

Q. No ಕ್ರ.ಸಂ.	Questions ಪ್ರಶ್ನೋತ್ತರಗಳು						Instruction ಸೂಚನೆಗಳು	Column coding ಕಾಲಂ ಕೋಡಿಂಗ್
	Person 1 ವ್ಯಕ್ತಿ ೧	5	4	3	2	1		850-852
	Person 2 ವ್ಯಕ್ತಿ ೨	5	4	3	2	1		
	Person 3 ವ್ಯಕ್ತಿ ೩	5	4	3	2	1		

(INSTRUCTIONS TO INVESTIGATOR: Now clear the bowl of all stones. Inform the respondent that you will now be repeating this exercise for other health domains such as ability to work, depression, pain, and overall health)

(ತನಖೆದಾರರಿಗೆ ಸೂಚನೆಗಳು: ಈಗ ಬೌಲ್ ನಲ್ಲಿರುವ ಎಲ್ಲಾ ಕಲ್ಲುಗಳನ್ನು ಸ್ವಚ್ಛಗೊಳಿಸಿ. ಪ್ರತವಾದಿಗೆ ಈಗ ಈ ಅಭ್ಯಾಸವನ್ನು ಮತ್ತೆ ಮಾಡುವಂತೆ ತಿಳಿಸಿ, ಇತರೆ ಆರೋಗ್ಯದ ಡೊಮೇನ್ಸ್ ಗಳ ತರಹದ ಕೆಲಸದ ಸಾಮರ್ಥ್ಯ, ಖಿನ್ನತೆ, ನೋವು ಮತ್ತು ಒಟ್ಟಾರೆ ಆರೋಗ್ಯ)

Q. No ಕ್ರ.ಸಂ.	Questions ಪ್ರಶ್ನೋತ್ತರಗಳು	Instruction ಸೂಚನೆಗಳು	Column coding ಕಾಲಂ ಕೋಡಿಂಗ್																		
	<p>Thinking about your health in the few days prior to the hospitalization when you were unwell (where major procedure occurred), how would you rate your ability to do usual activities that you do in a typical day such as going to work, playing with children, doing household activities such as cooking and cleaning ? Remember, 5 stones means you had no problems doing usual activities. 1 stone means you could not do any of your usual activities. [Record number of stones in bowl]</p> <p>ನೀವು ಆಸ್ಪತ್ರೆಗೆ ದಾಖಲಾಗುವ(ಮುಖ್ಯ ಕಾರ್ಯವಿಧಾನ ನಡೆದ ಸ್ಥಳ) ಕೆಲವು ದಿನಗಳ ಮುಂಚೆ ಒಂದು ಸಾಂಕೇತಿಕವಾದ ದಿನದಲ್ಲಿ ಕೆಲಸಕ್ಕೆ ಹೋಗುವುದು, ಮಕ್ಕಳೊಂದಿಗೆ ಆಟವಾಡುವುದು, ಅಡುಗೆ ಮಾಡುವುದು ಮತ್ತು ಸ್ವಚ್ಛಗೊಳಿಸುವುದು ಇಂತಹ ಮನೆಯ ಚಟುವಟಿಕೆಗಳನ್ನು ಮಾಡುವುದು ಇಂತಹ ಸಾಮಾನ್ಯ ಚಟುವಟಿಕೆಗಳನ್ನು ಮಾಡಲು ನಿಮ್ಮ ಸಾಮರ್ಥ್ಯವನ್ನು ನೀವು ಹೇಗೆ ರೇಟ್ ಮಾಡುವಿರಿ? ನೆನಪಿನಲ್ಲಿಡಿ, 5 ಕಲ್ಲುಗಳು ಎಂದರೆ ಸಾಮಾನ್ಯ ಚಟುವಟಿಕೆಗಳನ್ನು ಮಾಡಲು ನಿಮಗೆ ಯಾವುದೇ ತೊಂದರೆ ಇರಲಿಲ್ಲ ಎಂದ ಅರ್ಥ, 1 ಕಲ್ಲು ಎಂದರೆ ಸಾಮಾನ್ಯ ಚಟುವಟಿಕೆಗಳನ್ನು ಮಾಡಲು ನಿಮಗೆ ಆಗುತ್ತಲೇ ಇರಲಿಲ್ಲ ಎಂದು ಅರ್ಥ ಬರುತ್ತದೆ. .</p> <p>FEW DAYS BEFORE ಕೆಲವು ದಿನಗಳ ಮುಂಚೆ</p> <p>RECORD NUMBER OF STONES IN BOWL IN THE GRID BELOW</p> <p>ಕೆಳಗಿನ ಗ್ರಿಡ್ ಬೌಲ್ ನಲ್ಲಿರುವ ಕಲ್ಲುಗಳ ಸಂಖ್ಯೆಯನ್ನು ಬರೆಯಿರಿ.</p> <table><tr><td>Person 1 ವ್ಯಕ್ತಿ ೧</td><td>5</td><td>4</td><td>3</td><td>2</td><td>1</td></tr><tr><td>Person 2 ವ್ಯಕ್ತಿ ೨</td><td>5</td><td>4</td><td>3</td><td>2</td><td>1</td></tr><tr><td>Person 3 ವ್ಯಕ್ತಿ ೩</td><td>5</td><td>4</td><td>3</td><td>2</td><td>1</td></tr></table>	Person 1 ವ್ಯಕ್ತಿ ೧	5	4	3	2	1	Person 2 ವ್ಯಕ್ತಿ ೨	5	4	3	2	1	Person 3 ವ್ಯಕ್ತಿ ೩	5	4	3	2	1		853-855
Person 1 ವ್ಯಕ್ತಿ ೧	5	4	3	2	1																
Person 2 ವ್ಯಕ್ತಿ ೨	5	4	3	2	1																
Person 3 ವ್ಯಕ್ತಿ ೩	5	4	3	2	1																
	<p>Now thinking about your health today do you think your ability to do usual activities has improved or worsened or remained the same? If it has improved add more stones to bowl, similarly if it has worsened remove stones from the bowl. If it has remained the same just tell me that you do not want to add or remove stones from the bowl</p> <p>ಈಗ ಈ ದಿನ ನಿಮ್ಮ ಆರೋಗ್ಯದ ಬಗ್ಗೆ ಯೋಚಿಸುತ್ತಾ, ಸಾಮಾನ್ಯ ಚಟುವಟಿಕೆಗಳನ್ನು ಮಾಡಲು ನಿಮ್ಮ ಸಾಮರ್ಥ್ಯವು ಉತ್ತಮವಾಗಿದೆಯೇ ಅಥವಾ ಕಳಪೆಯಾಗಿದೆಯೇ ಅಥವಾ ಅದೇ ರೀತಿ ಉಳಿದಿದೆ ಎಂದು ನೀವು ಯೋಚಿಸುವಿರಾ? ಒಂದು ಪಕ್ಷ ಅದು ಉತ್ತಮವಾಗಿದ್ದಲ್ಲಿ ಬಟ್ಟಲಿಗೆ ಹೆಚ್ಚು ಕಲ್ಲುಗಳನ್ನು ಹಾಕಿ, ಅದೇ ರೀತಿಯಲ್ಲಿ ಒಂದು ಪಕ್ಷ ಅದು ಕಳಪೆ ಆಗಿದ್ದಲ್ಲಿ ಬಟ್ಟಲಿನಿಂದ ಕಲ್ಲುಗಳನ್ನು ತೆಗೆಯಿರಿ.ಒಂದು ಪಕ್ಷ ಅದು ಹಾಗೆಯೇ ಇದ್ದರೆ, ನೀವು ಬಟ್ಟಲಿಗೆ ಕಲ್ಲುಗಳನ್ನು ಸೇರಿಸಲು ಅಥವಾ ಕಲ್ಲುಗಳನ್ನು ತೆಗೆಯಲು ಬಯಸುವುದಿಲ್ಲ ಎಂದು ಹೇಳಬೇಕು ಅಷ್ಟೇ,</p> <p>Today ಈ ದಿನ</p> <p>RECORD NUMBER OF STONES IN BOWL IN THE GRID BELOW</p> <p>ಕೆಳಗಿನ ಗ್ರಿಡ್ ಬೌಲ್ ನಲ್ಲಿರುವ ಕಲ್ಲುಗಳ ಸಂಖ್ಯೆಯನ್ನು ಬರೆಯಿರಿ.</p> <table><tr><td>Person 1 ವ್ಯಕ್ತಿ ೧</td><td>5</td><td>4</td><td>3</td><td>2</td><td>1</td></tr><tr><td>Person 2 ವ್ಯಕ್ತಿ ೨</td><td>5</td><td>4</td><td>3</td><td>2</td><td>1</td></tr><tr><td>Person 3 ವ್ಯಕ್ತಿ ೩</td><td>5</td><td>4</td><td>3</td><td>2</td><td>1</td></tr></table>	Person 1 ವ್ಯಕ್ತಿ ೧	5	4	3	2	1	Person 2 ವ್ಯಕ್ತಿ ೨	5	4	3	2	1	Person 3 ವ್ಯಕ್ತಿ ೩	5	4	3	2	1		856-858
Person 1 ವ್ಯಕ್ತಿ ೧	5	4	3	2	1																
Person 2 ವ್ಯಕ್ತಿ ೨	5	4	3	2	1																
Person 3 ವ್ಯಕ್ತಿ ೩	5	4	3	2	1																

(INSTRUCTIONS TO INVESTIGATOR: Now clear the bowl of all stones)

(ತನಿಖೆ ದಾರರಿಗೆ ಸೂಚನೆಗಳು: ಈಗ ಬೌಲ್ ನಲ್ಲಿರುವ ಎಲ್ಲಾ ಕಲ್ಲುಗಳನ್ನು ಸ್ವಚ್ಛ ಗೊಳಿಸಿ)

Q. No ಕ್ರ.ಸಂ.	Questions ಪ್ರಶ್ನೋತ್ತರಗಳು	Instruction ಸೂಚನೆಗಳು	Column coding ಕಾಲಂ ಕೋಡಿಂಗ್																		
	<p>Thinking about your health in the few days prior to the hospitalization when you were unwell (where major procedure occurred), how would you rate your ability to walk about? Remember, 5 stones means you had no problems walking about. 1 stone means you were unable to walk about.</p> <p>ನೀವು ಆಸ್ಪತ್ರೆಗೆ ದಾಖಲಾಗುವ(ಮುಖ್ಯ ಕಾರ್ಯವಿಧಾನ ನಡೆದ ಸ್ಥಳ) ಕೆಲವು ದಿನಗಳ ಮುಂಚೆ ನಡೆದುಕೊಂಡು ಹೋಗಲು ನಿಮ್ಮ ಅನಾರೋಗ್ಯದ ಸಾಮರ್ಥ್ಯವನ್ನು ನೀವು ಹೇಗೆ ರೇಟ್ ಮಾಡುವಿರಿ? ನೆನಪಿಡಿ, 5 ಎಂದರೆ ನಿಮಗೆ ನಡೆದುಕೊಂಡುಹೋಗಲು ನಿಮಗೆ ಯಾವುದೇ ತೊಂದರೆ ಇರಲಿಲ್ಲ, 1 ಕಲ್ಲು ಎಂದರೆ ನಡೆದುಕೊಂಡು ಹೋಗಲು ನಿಮಗೆ ಸಾಧ್ಯವಿರಲಿಲ್ಲ ಎಂದು ಅರ್ಥಬರುತ್ತದೆ.</p> <p>೪ ವಾರಗಳ ಪೂರ್ವ</p> <p>FEW DAYS BEFORE</p> <p>ಕೆಲವು ದಿನಗಳ ಮುಂಚೆ</p> <p>RECORD NUMBER OF STONES IN BOWL IN THE GRID BELOW</p> <p>ಕೆಳಗಿನ ಗ್ರಿಡ್ ನಲ್ಲಿ ಬೌಲ್ ನಲ್ಲಿರುವ ಕಲ್ಲುಗಳ ಸಂಖ್ಯೆಯನ್ನು ಬರೆಯಿರಿ.</p> <table><tr><td>Person 1 ವ್ಯಕ್ತಿ ೧</td><td>5</td><td>4</td><td>3</td><td>2</td><td>1</td></tr><tr><td>Person 2 ವ್ಯಕ್ತಿ ೨</td><td>5</td><td>4</td><td>3</td><td>2</td><td>1</td></tr><tr><td>Person 3 ವ್ಯಕ್ತಿ ೩</td><td>5</td><td>4</td><td>3</td><td>2</td><td>1</td></tr></table>	Person 1 ವ್ಯಕ್ತಿ ೧	5	4	3	2	1	Person 2 ವ್ಯಕ್ತಿ ೨	5	4	3	2	1	Person 3 ವ್ಯಕ್ತಿ ೩	5	4	3	2	1		859-861
Person 1 ವ್ಯಕ್ತಿ ೧	5	4	3	2	1																
Person 2 ವ್ಯಕ್ತಿ ೨	5	4	3	2	1																
Person 3 ವ್ಯಕ್ತಿ ೩	5	4	3	2	1																
	<p>Now thinking about your health today do you think your ability walk about has improved or worsened or remained the same? If it has improved add more stones to bowl, similarly if it has worsened remove stones from the bowl. If it has remained the same just tell me that you do not want to add or remove stones from the bowl</p> <p>ಈಗ ಈ ದಿನ ನಿಮ್ಮ ಅನಾರೋಗ್ಯ ಬಗ್ಗೆ ಯೋಚಿಸುತ್ತಾ, ನಡೆದುಕೊಂಡು ಹೋಗಲು ನಿಮ್ಮ ಸಾಮರ್ಥ್ಯವು ಉತ್ತಮವಾಗಿದೆಯೇ ಅಥವಾ ಕಳಪೆಯಾಗಿದೆಯೇ ಅಥವಾ ಅದೇ ರೀತಿ ಉಳಿದಿದೆ ಎಂದು ನೀವು ಯೋಚಿಸುವಿರಾ? ಒಂದು ಪಕ್ಷ ಅದು ಉತ್ತಮವಾಗಿದ್ದಲ್ಲಿ ಬಟ್ಟಲಿಗೆ ಹೆಚ್ಚು ಕಲ್ಲುಗಳನ್ನು ಹಾಕಿ, ಅದೇ ರೀತಿಯಲ್ಲಿ ಒಂದು ಪಕ್ಷ ಅದು ಕಳಪೆ ಆಗಿದ್ದಲ್ಲಿ ಬಟ್ಟಲಿನಿಂದ ಕಲ್ಲುಗಳನ್ನು ತೆಗೆಯಿರಿ.ಒಂದು ಪಕ್ಷ ಅದು ಹಾಗೆಯೇ ಇದ್ದರೆ, ನೀವು ಬಟ್ಟಲಿಗೆ ಕಲ್ಲುಗಳನ್ನು ಸೇರಿಸಲು ಅಥವಾ ಕಲ್ಲುಗಳನ್ನು ತೆಗೆಯಲು ಬಯಸುವುದಿಲ್ಲ ಎಂದು ಹೇಳಬೇಕು ಅಷ್ಟೇ,</p> <p>Today</p> <p>ಈ ದಿನ</p> <p>RECORD NUMBER OF STONES IN BOWL IN THE GRID BELOW</p> <p>ಕೆಳಗಿನ ಗ್ರಿಡ್ ನಲ್ಲಿ ಬೌಲ್ ನಲ್ಲಿರುವ ಕಲ್ಲುಗಳ ಸಂಖ್ಯೆಯನ್ನು ಬರೆಯಿರಿ.</p> <table><tr><td>Person 1 ವ್ಯಕ್ತಿ ೧</td><td>5</td><td>4</td><td>3</td><td>2</td><td>1</td></tr><tr><td>Person 2 ವ್ಯಕ್ತಿ ೨</td><td>5</td><td>4</td><td>3</td><td>2</td><td>1</td></tr><tr><td>Person 3 ವ್ಯಕ್ತಿ ೩</td><td>5</td><td>4</td><td>3</td><td>2</td><td>1</td></tr></table>	Person 1 ವ್ಯಕ್ತಿ ೧	5	4	3	2	1	Person 2 ವ್ಯಕ್ತಿ ೨	5	4	3	2	1	Person 3 ವ್ಯಕ್ತಿ ೩	5	4	3	2	1		862-864
Person 1 ವ್ಯಕ್ತಿ ೧	5	4	3	2	1																
Person 2 ವ್ಯಕ್ತಿ ೨	5	4	3	2	1																
Person 3 ವ್ಯಕ್ತಿ ೩	5	4	3	2	1																

(INSTRUCTIONS TO INVESTIGATOR: Now clear the bowl of all stones)

(ತನಿಖೆದಾರರಿಗೆ ಸೂಚನೆಗಳು: ಈಗ ಬೌಲ್ ನಲ್ಲಿರುವ ಎಲ್ಲ ಕಲ್ಲುಗಳನ್ನು ಸ್ವಚ್ಛಗೊಳಿಸಿ)

Q. No ಕ್ರ.ಸಂ.	Questions ಪ್ರಶ್ನೋತ್ತರಗಳು	Instruction ಸೂಚನೆಗಳು	Column coding ಕಾಲಂ ಕೋಡಿಂಗ್
	Thinking about your health in the few days prior to the hospitalization when you were unwell (where major procedure occurred), how would you rate your pain or		

Q. No ಕ್ರ.ಸಂ.	Questions ಪ್ರಶ್ನೋತ್ತರಗಳು	Instruction ಸೂಚನೆಗಳು	Column coding ಕಾಲಂ ಕೋಡಿಂಗ್																		
	<p>discomfort? Remember, 5 stones means you had no pain or discomfort. 1 stone means you had extreme pain or discomfort.</p> <p>ನೀವು ಆಸ್ಪತ್ರೆಗೆ ದಾಖಲಾಗುವ(ಮುಖ್ಯ ಕಾರ್ಯವಿಧಾನ ನಡೆದ ಸ್ಥಳ) ಕೆಲವು ದಿನಗಳ ಮುಂಚೆ, ನಿಮ್ಮ ಅನಾರೋಗ್ಯದ ಬಗ್ಗೆ ಯೋಚಿಸಿ ನಿಮ್ಮ ನೋವು ಅಥವಾ ಅಸ್ವಸ್ಥತೆಯನ್ನು ನೀವು ಹೇಗೆ ಅಂಕವನ್ನು ನೀಡುವಿರಿ? ನೆನಪಿಡಿ, 5 ಕಲ್ಲುಗಳು ಎಂದರೆ ನಿಮಗೆ ನೋವು ಅಥವಾ ಅಸ್ವಸ್ಥತೆ ಇರಲಿಲ್ಲ, 1 ಕಲ್ಲು ಎಂದರೆ ನಿಮಗೆ ತುಂಬಾ ನೋವು ಅಥವಾ ಅಸ್ವಸ್ಥತೆ ಇತ್ತು ಎಂದು ಅರ್ಥಬರುತ್ತದೆ.</p> <p>FEW DAYS BEFORE</p> <p>ಕೆಲವು ದಿನಗಳ ಮುಂಚೆ</p> <p>RECORD NUMBER OF STONES IN BOWL IN THE GRID BELOW</p> <p>ಕೆಳಗಿನ ಗ್ರಿಡ್ ನಲ್ಲಿ ಬೌಲ್ ನಲ್ಲಿರುವ ಕಲ್ಲುಗಳ ಸಂಖ್ಯೆಯನ್ನು ಬರೆಯಿರಿ.</p>																				
	<table><tr><td>Person 1 ವ್ಯಕ್ತಿ ೧</td><td>5</td><td>4</td><td>3</td><td>2</td><td>1</td></tr><tr><td>Person 2 ವ್ಯಕ್ತಿ ೨</td><td>5</td><td>4</td><td>3</td><td>2</td><td>1</td></tr><tr><td>Person 3 ವ್ಯಕ್ತಿ ೩</td><td>5</td><td>4</td><td>3</td><td>2</td><td>1</td></tr></table>	Person 1 ವ್ಯಕ್ತಿ ೧	5	4	3	2	1	Person 2 ವ್ಯಕ್ತಿ ೨	5	4	3	2	1	Person 3 ವ್ಯಕ್ತಿ ೩	5	4	3	2	1		865-867
Person 1 ವ್ಯಕ್ತಿ ೧	5	4	3	2	1																
Person 2 ವ್ಯಕ್ತಿ ೨	5	4	3	2	1																
Person 3 ವ್ಯಕ್ತಿ ೩	5	4	3	2	1																
	<p>Now thinking about your health today do you think your pain or discomfort has improved or worsened or remained the same? If it has improved add more stones to bowl, similarly if it has worsened remove stones from the bowl. If it has remained the same just tell me that you do not want to add or remove stones from the bowl</p> <p>ಈಗ ಈ ದಿನ ನಿಮ್ಮ ಆರೋಗ್ಯದ ಬಗ್ಗೆ ಯೋಚಿಸುತ್ತಾ, ನಿಮ್ಮ ನೋವು ಅಥವಾ ಅಸ್ವಸ್ಥತೆಯು ಉತ್ತಮವಾಗಿದೆಯೇ ಅಥವಾ ಕಳಪೆಯಾಗಿದೆಯೇ ಅಥವಾ ಅದೇ ರೀತಿ ಉಳಿದಿದೆ ಎಂದು ನೀವು ಯೋಚಿಸುವಿರಾ? ಒಂದು ಪಕ್ಷ ಅದು ಉತ್ತಮವಾಗಿದ್ದಲ್ಲಿ ಬಟ್ಟಲಿಗೆ ಹೆಚ್ಚು ಕಲ್ಲುಗಳನ್ನು ಹಾಕಿ, ಅದೇ ರೀತಿಯಲ್ಲಿ ಒಂದು ಪಕ್ಷ ಅದು ಕಳಪೆ ಆಗಿದ್ದಲ್ಲಿ ಬಟ್ಟಲಿನಿಂದ ಕಲ್ಲುಗಳನ್ನು ತೆಗೆಯಿರಿ.ಒಂದು ಪಕ್ಷ ಅದು ಹಾಗೆಯೇ ಇದ್ದರೆ, ನೀವು ಬಟ್ಟಲಿಗೆ ಕಲ್ಲುಗಳನ್ನು ಸೇರಿಸಲು ಅಥವಾ ಕಲ್ಲುಗಳನ್ನು ತೆಗೆಯಲು ಬಯಸುವುದಿಲ್ಲ ಎಂದು ಹೇಳಬೇಕು ಅಷ್ಟೇ,</p> <p>Today</p> <p>ಈ ದಿನ</p> <p>RECORD NUMBER OF STONES IN BOWL IN THE GRID BELOW</p> <p>ಕೆಳಗಿನ ಗ್ರಿಡ್ ನಲ್ಲಿ ಬೌಲ್ ನಲ್ಲಿರುವ ಕಲ್ಲುಗಳ ಸಂಖ್ಯೆಯನ್ನು ಬರೆಯಿರಿ.</p>																				
	<table><tr><td>Person 1 ವ್ಯಕ್ತಿ ೧</td><td>5</td><td>4</td><td>3</td><td>2</td><td>1</td></tr><tr><td>Person 2 ವ್ಯಕ್ತಿ ೨</td><td>5</td><td>4</td><td>3</td><td>2</td><td>1</td></tr><tr><td>Person 3 ವ್ಯಕ್ತಿ ೩</td><td>5</td><td>4</td><td>3</td><td>2</td><td>1</td></tr></table>	Person 1 ವ್ಯಕ್ತಿ ೧	5	4	3	2	1	Person 2 ವ್ಯಕ್ತಿ ೨	5	4	3	2	1	Person 3 ವ್ಯಕ್ತಿ ೩	5	4	3	2	1		868-870
Person 1 ವ್ಯಕ್ತಿ ೧	5	4	3	2	1																
Person 2 ವ್ಯಕ್ತಿ ೨	5	4	3	2	1																
Person 3 ವ್ಯಕ್ತಿ ೩	5	4	3	2	1																

(INSTRUCTIONS TO INVESTIGATOR: Now clear the bowl of all stones)

(ತನಿಖೆದಾರರಿಗೆ ಸೂಚನೆಗಳು: ಈಗ ಬೌಲ್ ನಲ್ಲಿರುವ ಎಲ್ಲ ಕಲ್ಲುಗಳನ್ನು ಸ್ವಚ್ಛಗೊಳಿಸಿ)

Q. No ಕ್ರ.ಸಂ.	Questions ಪ್ರಶ್ನೋತ್ತರಗಳು	Instruction ಸೂಚನೆಗಳು	Column coding ಕಾಲಂ ಕೋಡಿಂಗ್
	<p>Thinking about your health in the few days prior to the hospitalization when you were unwell (where major procedure occurred), how would you rate your level of anxiety or depression? Remember, 5 stones means you not anxious or depressed. 1 stone means you were extremely anxious or depressed.</p>		

Q. No ಕ್ರ.ಸಂ.	Questions ಪ್ರಶ್ನೋತ್ತರಗಳು	Instruction ಸೂಚನೆಗಳು	Column coding ಕಾಲಂ ಕೋಡಿಂಗ್																		
	<p>ನೀವು ಆಸ್ಪತ್ರೆಗೆ ದಾಖಲಾಗುವ(ಮುಖ್ಯ ಕಾರ್ಯವಿಧಾನ ನಡೆದ ಸ್ಥಳ) ಕೆಲವು ದಿನಗಳ ಮುಂಚೆ ನಿಮ್ಮ ಗಾಬರಿಯಾಗುವಿಕೆ ಅಥವಾ ಖಿನ್ನತೆಯ ಮಟ್ಟವನ್ನು ನೀವು ಹೇಗೆ ರೇಟ್ ಮಾಡುವಿರಿ? ನೆನಪಿಡಿ, 5 ಕಲ್ಲುಗಳು ಎಂದರೆ ನಿಮಗೆ ಗಾಬರಿಯಾಗುವುದು ಅಥವಾ ಖಿನ್ನನಾಗುವ ಗುಣವನ್ನು ಹೊಂದಿರಲಿಲ್ಲ, 1 ಕಲ್ಲು ಎಂದರೆ ನಿಮಗೆ ತುಂಬಾ ಗಾಬರಿಯಾಗುವುದು ಅಥವಾ ಖಿನ್ನನಾಗುವ ಗುಣವನ್ನು ಇತ್ತು ಎಂದು ಅರ್ಥಬರುತ್ತದೆ.</p> <p>FEW DAYS BEFORE ಕೆಲವು ದಿನಗಳ ಮುಂಚೆ</p> <p>RECORD NUMBER OF STONES IN BOWL IN THE GRID BELOW ಕೆಳಗಿನ ಗ್ರಿಡ್ ನಲ್ಲಿ ಬೌಲ್ ನಲ್ಲಿರುವ ಕಲ್ಲುಗಳ ಸಂಖ್ಯೆಯನ್ನು ಬರೆಯಿರಿ.</p> <table><tr><td>Person 1 ವ್ಯಕ್ತಿ ೧</td><td>5</td><td>4</td><td>3</td><td>2</td><td>1</td></tr><tr><td>Person 2 ವ್ಯಕ್ತಿ ೨</td><td>5</td><td>4</td><td>3</td><td>2</td><td>1</td></tr><tr><td>Person 3 ವ್ಯಕ್ತಿ ೩</td><td>5</td><td>4</td><td>3</td><td>2</td><td>1</td></tr></table>	Person 1 ವ್ಯಕ್ತಿ ೧	5	4	3	2	1	Person 2 ವ್ಯಕ್ತಿ ೨	5	4	3	2	1	Person 3 ವ್ಯಕ್ತಿ ೩	5	4	3	2	1		
Person 1 ವ್ಯಕ್ತಿ ೧	5	4	3	2	1																
Person 2 ವ್ಯಕ್ತಿ ೨	5	4	3	2	1																
Person 3 ವ್ಯಕ್ತಿ ೩	5	4	3	2	1																
	<p>Now thinking about your health today do you think your level of anxiety or depression has improved or worsened or remained the same? If it has improved add more stones to bowl, similarly if it has worsened remove stones from the bowl. If it has remained the same just tell me that you do not want to add or remove stones from the bowl</p> <p>ಈಗ ಈ ದಿನ ನಿಮ್ಮ ಆರೋಗ್ಯದ ಬಗ್ಗೆ ಯೋಚಿಸುತ್ತಾ, ನಿಮ್ಮ ಗಾಬರಿಯಾಗುವ ಅಥವಾ ಖಿನ್ನತೆಯ ಮಟ್ಟವು ಉತ್ತಮವಾಗಿದೆಯೇ ಅಥವಾ ಕಳಪೆಯಾಗಿದೆಯೇ ಅಥವಾ ಅದೇ ರೀತಿ ಉಳಿದಿದೆ ಎಂದು ನೀವು ಯೋಚಿಸುವಿರಾ? ಒಂದು ಪಕ್ಷ ಅದು ಉತ್ತಮವಾಗಿದ್ದಲ್ಲಿ ಬಟ್ಟಲಿಗೆ ಹೆಚ್ಚು ಕಲ್ಲುಗಳನ್ನು ಹಾಕಿ, ಅದೇ ರೀತಿಯಲ್ಲಿ ಒಂದು ಪಕ್ಷ ಅದು ಕಳಪೆ ಆಗಿದ್ದಲ್ಲಿ ಬಟ್ಟಲಿನಿಂದ ಕಲ್ಲುಗಳನ್ನು ತೆಗೆಯಿರಿ.ಒಂದು ಪಕ್ಷ ಅದು ಹಾಗೆಯೇ ಇದ್ದರೆ, ನೀವು ಬಟ್ಟಲಿಗೆ ಕಲ್ಲುಗಳನ್ನು ಸೇರಿಸಲು ಅಥವಾ ಕಲ್ಲುಗಳನ್ನು ತೆಗೆಯಲು ಬಯಸುವುದಿಲ್ಲ ಎಂದು ಹೇಳಬೇಕು ಅವ್ವೇ,</p> <p>Today ಈ ದಿನ</p> <p>RECORD NUMBER OF STONES IN BOWL IN THE GRID BELOW ಕೆಳಗಿನ ಗ್ರಿಡ್ ನಲ್ಲಿ ಬೌಲ್ ನಲ್ಲಿರುವ ಕಲ್ಲುಗಳ ಸಂಖ್ಯೆಯನ್ನು ಬರೆಯಿರಿ.</p> <table><tr><td>Person 1 ವ್ಯಕ್ತಿ ೧</td><td>5</td><td>4</td><td>3</td><td>2</td><td>1</td></tr><tr><td>Person 2 ವ್ಯಕ್ತಿ ೨</td><td>5</td><td>4</td><td>3</td><td>2</td><td>1</td></tr><tr><td>Person 3 ವ್ಯಕ್ತಿ ೩</td><td>5</td><td>4</td><td>3</td><td>2</td><td>1</td></tr></table>	Person 1 ವ್ಯಕ್ತಿ ೧	5	4	3	2	1	Person 2 ವ್ಯಕ್ತಿ ೨	5	4	3	2	1	Person 3 ವ್ಯಕ್ತಿ ೩	5	4	3	2	1		
Person 1 ವ್ಯಕ್ತಿ ೧	5	4	3	2	1																
Person 2 ವ್ಯಕ್ತಿ ೨	5	4	3	2	1																
Person 3 ವ್ಯಕ್ತಿ ೩	5	4	3	2	1																
			871-873																		
			874-876																		

(INSTRUCTIONS TO INVESTIGATOR: Now clear the bowl of all stones)

(ತನಿಖೆದಾರರಿಗೆ ಸೂಚನೆಗಳು: ಈಗ ಬೌಲ್ ನಲ್ಲಿರುವ ಎಲ್ಲ ಕಲ್ಲುಗಳನ್ನು ಸ್ವಚ್ಛಗೊಳಿಸಿ)

Q. No ಕ್ರ.ಸಂ.	Questions ಪ್ರಶ್ನೋತ್ತರಗಳು	Instruction ಸೂಚನೆಗಳು	Column coding ಕಾಲಂ ಕೋಡಿಂಗ್
	<p>Thinking about your health in the few days prior to the hospitalization when you were unwell (where major procedure occurred), how would you rate your overall health? Remember, 5 stones means you were perfectly healthy. 1 stone means you were extremely sick.</p> <p>ನೀವು ಆಸ್ಪತ್ರೆಗೆ ದಾಖಲಾಗುವ(ಮುಖ್ಯ ಕಾರ್ಯವಿಧಾನ ನಡೆದ ಸ್ಥಳ) ಕೆಲವು ದಿನಗಳ ಮುಂಚಿನ ಬಗ್ಗೆ</p>		

Q. No ಕ್ರ.ಸಂ.	Questions ಪ್ರಶ್ನೋತ್ತರಗಳು	Instruction ಸೂಚನೆಗಳು	Column coding ಕಾಲಂ ಕೋಡಿಂಗ್																		
	<p>ಯೋಚಿಸುತ್ತಾ, ನಿಮ್ಮ ಒಟ್ಟಾರೆ ಆರೋಗ್ಯಕ್ಕೆ ನೀವು ಹೇಗೆ ಅಂಕವನ್ನು ನೀಡುವಿರಿ. ನೆನಪಿಡಿ, 5 ಕಲ್ಲುಗಳು ಎಂದರೆ ನೀವು ಪರಿಪೂರ್ಣವಾಗಿ ಆರೋಗ್ಯದಿಂದಿದ್ದಿರಿ ಎಂದು ಅರ್ಥ, 1 ಕಲ್ಲು ಎಂದರೆ ನೀವು ಅತೀಹೆಚ್ಚು ರೋಗಗ್ರಸ್ಥರಾಗಿದ್ದಿರಿ ಎಂದು ಅರ್ಥಬರುತ್ತದೆ</p> <p>FEW DAYS BEFORE</p> <p>ಕೆಲವು ದಿನಗಳ ಮುಂಚೆ</p> <p>RECORD NUMBER OF STONES IN BOWL IN THE GRID BELOW</p> <p>ಕೆಳಗಿನ ಗ್ರಿಡ್ ನಲ್ಲಿ ಬೌಲ್ ನಲ್ಲಿರುವ ಕಲ್ಲುಗಳ ಸಂಖ್ಯೆಯನ್ನು ಬರೆಯಿರಿ.</p>																				
	<table><tr><td>Person 1 ವ್ಯಕ್ತಿ ೧</td><td>5</td><td>4</td><td>3</td><td>2</td><td>1</td></tr><tr><td>Person 2 ವ್ಯಕ್ತಿ ೨</td><td>5</td><td>4</td><td>3</td><td>2</td><td>1</td></tr><tr><td>Person 3 ವ್ಯಕ್ತಿ ೩</td><td>5</td><td>4</td><td>3</td><td>2</td><td>1</td></tr></table>	Person 1 ವ್ಯಕ್ತಿ ೧	5	4	3	2	1	Person 2 ವ್ಯಕ್ತಿ ೨	5	4	3	2	1	Person 3 ವ್ಯಕ್ತಿ ೩	5	4	3	2	1		877-879
Person 1 ವ್ಯಕ್ತಿ ೧	5	4	3	2	1																
Person 2 ವ್ಯಕ್ತಿ ೨	5	4	3	2	1																
Person 3 ವ್ಯಕ್ತಿ ೩	5	4	3	2	1																

Q. No ಕ್ರ. ಸಂ.	Questions ಪ್ರಶ್ನೋತ್ತರಗಳು	Instruction ಸೂಚನೆಗಳು	Column coding ಕಾಲಂ ಕೋಡಿಂಗ್																		
	<p>Now thinking about your health today do you think your overall health has improved or worsened or remained the same? If it has improved add more stones to bowl, similarly if it has worsened remove stones from the bowl. If it has remained the same just tell me that you do not want to add or remove stones from the bowl</p> <p>ಈಗ ಈ ದಿನ ನಿಮ್ಮ ಆರೋಗ್ಯದ ಬಗ್ಗೆ ಯೋಚಿಸುತ್ತಾ, ನಿಮ್ಮ ಒಟ್ಟಾರೆ ಆರೋಗ್ಯವು ಉತ್ತಮವಾಗಿದೆಯೇ ಅಥವಾ ಕಳಪೆಯಾಗಿದೆಯೇ ಅಥವಾ ಅದೇ ರೀತಿ ಉಳಿದಿದೆ ಎಂದು ನೀವು ಯೋಚಿಸುವಿರಾ? ಒಂದು ಪಕ್ಷ ಅದು ಉತ್ತಮವಾಗಿದ್ದಲ್ಲಿ ಬಟ್ಟಲಿಗೆ ಹೆಚ್ಚು ಕಲ್ಲುಗಳನ್ನು ಹಾಕಿ, ಅದೇ ರೀತಿಯಲ್ಲಿ ಒಂದು ಪಕ್ಷ ಅದು ಕಳಪೆ ಆಗಿದ್ದಲ್ಲಿ ಬಟ್ಟಲಿನಿಂದ ಕಲ್ಲುಗಳನ್ನು ತೆಗೆಯಿರಿ.ಒಂದು ಪಕ್ಷ ಅದು ಹಾಗೆಯೇ ಇದ್ದರೆ, ನೀವು ಬಟ್ಟಲಿಗೆ ಕಲ್ಲುಗಳನ್ನು ಸೇರಿಸಲು ಅಥವಾ ಕಲ್ಲುಗಳನ್ನು ತೆಗೆಯಲು ಬಯಸುವುದಿಲ್ಲ ಎಂದು ಹೇಳಬೇಕು ಅಷ್ಟೇ,</p> <p>Today ಈ ದಿನ</p> <p>RECORD NUMBER OF STONES IN BOWL IN THE GRID BELOW</p> <p>ಕೆಳಗಿನ ಗ್ರಿಡ್ ನಲ್ಲಿ ಬೌಲ್ ನಲ್ಲಿರುವ ಕಲ್ಲುಗಳ ಸಂಖ್ಯೆಯನ್ನು ಬರೆಯಿರಿ.</p>																				
	<table><tr><td>Person 1 ವ್ಯಕ್ತಿ ೧</td><td>5</td><td>4</td><td>3</td><td>2</td><td>1</td></tr><tr><td>Person 2 ವ್ಯಕ್ತಿ ೨</td><td>5</td><td>4</td><td>3</td><td>2</td><td>1</td></tr><tr><td>Person 3 ವ್ಯಕ್ತಿ ೩</td><td>5</td><td>4</td><td>3</td><td>2</td><td>1</td></tr></table>	Person 1 ವ್ಯಕ್ತಿ ೧	5	4	3	2	1	Person 2 ವ್ಯಕ್ತಿ ೨	5	4	3	2	1	Person 3 ವ್ಯಕ್ತಿ ೩	5	4	3	2	1		880-882
Person 1 ವ್ಯಕ್ತಿ ೧	5	4	3	2	1																
Person 2 ವ್ಯಕ್ತಿ ೨	5	4	3	2	1																
Person 3 ವ್ಯಕ್ತಿ ೩	5	4	3	2	1																
	<table><tr><td>This section (Q. 342 to Q.357) was answered by ಈ ಸೆಕ್ಷನ್ (Q. 342 ರಿಂದ Q.357) ---ರವರಿಂದ ಉತ್ತರಿಸಲ್ಪಟ್ಟಿದೆ</td><td>Person 1 ವ್ಯಕ್ತಿ ೧</td><td>Person 2 ವ್ಯಕ್ತಿ ೨</td><td>Person 3 ವ್ಯಕ್ತಿ ೩</td><td></td><td></td></tr><tr><td>Patient ರೋಗಿ</td><td>1</td><td>1</td><td>1</td><td></td><td>883-885</td></tr><tr><td>Care taker ಕಾಳಜಿ ವಹಿಸುವವ</td><td>2</td><td>2</td><td>2</td><td></td><td></td></tr></table>	This section (Q. 342 to Q.357) was answered by ಈ ಸೆಕ್ಷನ್ (Q. 342 ರಿಂದ Q.357) ---ರವರಿಂದ ಉತ್ತರಿಸಲ್ಪಟ್ಟಿದೆ	Person 1 ವ್ಯಕ್ತಿ ೧	Person 2 ವ್ಯಕ್ತಿ ೨	Person 3 ವ್ಯಕ್ತಿ ೩			Patient ರೋಗಿ	1	1	1		883-885	Care taker ಕಾಳಜಿ ವಹಿಸುವವ	2	2	2				
This section (Q. 342 to Q.357) was answered by ಈ ಸೆಕ್ಷನ್ (Q. 342 ರಿಂದ Q.357) ---ರವರಿಂದ ಉತ್ತರಿಸಲ್ಪಟ್ಟಿದೆ	Person 1 ವ್ಯಕ್ತಿ ೧	Person 2 ವ್ಯಕ್ತಿ ೨	Person 3 ವ್ಯಕ್ತಿ ೩																		
Patient ರೋಗಿ	1	1	1		883-885																
Care taker ಕಾಳಜಿ ವಹಿಸುವವ	2	2	2																		