



BMJ Open is committed to open peer review. As part of this commitment we make the peer review history of every article we publish publicly available.

When an article is published we post the peer reviewers' comments and the authors' responses online. We also post the versions of the paper that were used during peer review. These are the versions that the peer review comments apply to.

The versions of the paper that follow are the versions that were submitted during the peer review process. They are not the versions of record or the final published versions. They should not be cited or distributed as the published version of this manuscript.

BMJ Open is an open access journal and the full, final, typeset and author-corrected version of record of the manuscript is available on our site with no access controls, subscription charges or pay-per-view fees (<http://bmjopen.bmj.com>).

If you have any questions on BMJ Open's open peer review process please email [info.bmjopen@bmj.com](mailto:info.bmjopen@bmj.com)

# BMJ Open

## Complex Care for Kids Ontario: Protocol for a mixed-methods evaluation of a population-level care coordination initiative for children with medical complexity

Journal:	<i>BMJ Open</i>
Manuscript ID	bmjopen-2018-028121
Article Type:	Protocol
Date Submitted by the Author:	22-Nov-2018
Complete List of Authors:	<p>Orkin, Julia; The Hospital for Sick Children, Division of Pediatric Medicine; University of Toronto, Department of Pediatrics</p> <p>Chan, Carol ; The Hospital for Sick Children, Child Health Evaluative Sciences</p> <p>Fayed, Nora; Queen's University, School of Rehabilitation Therapy</p> <p>Lin, Jia Lu Lilian; University of Toronto Dalla Lana School of Public Health, Institute of Health Policy, Management and Evaluation</p> <p>Major, Nathalie; Children's Hospital of Eastern Ontario, Department of Paediatrics</p> <p>Lim, Audrey; Hamilton Health Sciences Center, McMaster University, Department of Pediatrics</p> <p>Peebles, Erin; Western University</p> <p>Moretti, Myla; The Hospital for Sick Children, University of Toronto, Clinical Trials Unit</p> <p>Soscia, Joanna; The Hospital for Sick Children, Division of Pediatric Medicine</p> <p>Sultan, Roxana; The Hospital for Sick Children, The Provincial Council for Maternal &amp; Child Health</p> <p>Willan, Andrew; The Hospital for Sick Children, Clinical Trials Unit-Ontario Child Health Support Unit</p> <p>Offringa, Martin; The Hospital for Sick Children, Child Health Evaluation Sciences</p> <p>Guttmann, Astrid; Institute for Clinical Evaluative Sciences, ; The Hospital for Sick Children, Division of Pediatric Medicine</p> <p>Bartlett, Leah; Royal Victoria Regional Health Centre</p> <p>Kanani, Ronik; North York General Hospital, University of Toronto, Pediatrics</p> <p>Culbert, Erin; Trillium Health Partners, The Credit Valley Hospital</p> <p>Hardy-Brown , Karolyn ; Peterborough Regional Health Centre</p> <p>Gordon, Michelle; Orillia Soldier's Memorial Hospital</p> <p>Perlmutter, Marty; Michael Garron Hospital</p> <p>Cohen, Eyal; The Hospital for Sick Children, Division of Pediatric Medicine ; University of Toronto, Department of Pediatrics</p>
Keywords:	complex care, medical complexity, health services, children, randomized controlled trial, parents

1  
2  
3  
4  
5  
6  
7  
8  
9  
10  
11  
12  
13  
14  
15  
16  
17  
18  
19  
20  
21  
22  
23  
24  
25  
26  
27  
28  
29  
30  
31  
32  
33  
34  
35  
36  
37  
38  
39  
40  
41  
42  
43  
44  
45  
46  
47  
48  
49  
50  
51  
52  
53  
54  
55  
56  
57  
58  
59  
60



# Complex Care for Kids Ontario: Protocol for a mixed-methods evaluation of a population-level care coordination initiative for children with medical complexity

**Authors:** Julia Orkin<sup>1,2,3</sup>, Carol Y Chan<sup>3</sup>, Nora Fayed<sup>4</sup>, Jia Lu Lilian Lin<sup>5</sup>, Nathalie Major<sup>6</sup>, Audrey Lim<sup>7</sup>, Erin Peebles<sup>8</sup>, Myla E Moretti<sup>5,9</sup>, Joanna Soscia<sup>1</sup>, Roxana Sultan<sup>10</sup>, Andrew R Willan<sup>9</sup>, Martin Offringa<sup>2,3</sup>, Astrid Guttmann<sup>1,2,3,5,11,18</sup>, Leah Bartlett<sup>12</sup>, Ronik Kanani<sup>13</sup>, Erin Culbert<sup>14</sup>, Karolyn Hardy-Brown<sup>15</sup>, Michelle Gordon<sup>16</sup>, Marty Perlmutter<sup>17</sup>, and Eyal Cohen<sup>1,2,3,18</sup>

**Author Affiliations:** <sup>1</sup>Division of Pediatric Medicine, The Hospital for Sick Children, Toronto, Ontario, Canada, <sup>2</sup>Department of Pediatrics, University of Toronto, Toronto, Ontario, Canada, <sup>3</sup>Child Health Evaluative Sciences, The Hospital for Sick Children, Toronto, Ontario, Canada, <sup>4</sup>School of Rehabilitation Therapy, Queen's University, Kingston, Ontario, Canada, <sup>5</sup>Institute of Health Policy, Management and Evaluation, Dalla Lana School of Public Health, University of Toronto, Toronto, Ontario, Canada, <sup>6</sup>Department of Paediatrics, Children's Hospital of Eastern Ontario, University of Ottawa, Ottawa, Ontario, Canada, <sup>7</sup>Department of Pediatrics, Hamilton Health Sciences Centre, McMaster University, Hamilton, Ontario, Canada, <sup>8</sup>Western University, London, Ontario, Canada, <sup>9</sup>Clinical Trials Unit-Ontario Child Health Support Unit, The Hospital for Sick Children, Toronto, Ontario, Canada, <sup>10</sup>The Provincial Council for Maternal & Child Health, The Hospital for Sick Children, Toronto, Ontario, Canada, <sup>11</sup>Dalla Lana School of Public Health, Ontario Child Health Support Unit, Research Institute, The Hospital for Sick Children, Toronto, Ontario, Canada, <sup>12</sup>Royal Victoria Regional Health Centre, Barrie, Ontario, Canada, <sup>13</sup>North York General Hospital, Toronto, Ontario, Canada, <sup>14</sup>Trillium Health Partners, The Credit Valley Hospital, Mississauga, Ontario, Canada, <sup>15</sup>Peterborough Regional Health Centre, Peterborough, Ontario, Canada, <sup>16</sup>Orillia Soldier's Memorial Hospital, Orillia, Ontario, Canada, <sup>17</sup>Michael Garron Hospital, Toronto, Ontario, Canada, <sup>18</sup>Institute for Clinical Evaluative Sciences, Toronto, Ontario, Canada

**Keywords:** Complex Care, medical complexity, health services, coordination, children, parents, randomized controlled trial

## Abbreviations:

CCKO: Complex Care for Kids Ontario

CMC: children with medical complexity

FECC: Family Experiences with Coordination of Care

KT: knowledge translation

MFTD: Medically Fragile and/or Technology Dependent

PCMCH: The Provincial Council for Maternal & Child Health

**Correspondence:** Dr. Julia Orkin, The Hospital for Sick Children, 555 University Avenue, Toronto, Ontario, Canada, M5G 1X8, Email: [julia.orkin@sickkids.ca](mailto:julia.orkin@sickkids.ca) Telephone: 416-813-7654 ext 201150

**Word Count (abstract):** 300 words

**Word Count (text):** 4,014 words without figures, tables, and appendices

1

2

3

4

5

6

7

8

9

10

11

12

13

14

15

16

17

18

19

20

21

22

23

24

25

26

27

28

29

30

31

32

33

34

35

36

37

38

39

40

41

42

43

44

45

46

47

48

49

50

51

52

53

54

55

56

57

58

59

60

**ABSTRACT**

**Introduction:** Technological and medical advances have led to a growing population of children with medical complexity (CMC) defined by substantial medical needs, healthcare utilization, and morbidity. These children are at a high risk of missed, fragmented and/or inappropriate care, and families bear extraordinary financial burden and stress. While small in number (<1% of children), this group uses approximately 1/3 of all child healthcare resources, and need coordinated care to optimize their health. Complex Care for Kids Ontario (CCKO) brings researchers, families, and healthcare providers together to develop, implement and evaluate a population-level roll-out of care for CMC in Ontario, Canada through a randomized controlled trial design. The intervention includes dedicated key workers and the utilization of coordinated shared care plans.

**Methods and analysis:** Our primary objective is to evaluate the CCKO intervention using a randomized waitlist control design. The waitlist approach involves rolling out an intervention over time, whereby all participants are randomized into two groups (A and B) to receive the intervention at different time points determined at random. Baseline measurements are collected at month 0, and Groups A and B are compared at months 6 and 12. The primary outcome is the Family Experiences with Coordination of Care (FECC) survey at 12 months. The FECC will be compared between groups using an analysis of covariance with the corresponding baseline score as the covariate. Secondary outcomes include reports of child and parent health outcomes, health system utilization, and process outcomes.

**Ethics and Dissemination:** Research ethics approval has been obtained for this multicentre randomized controlled trial. This trial will assess the effect of a large population-level complex

care intervention to determine whether dedicated key workers and coordinated care plans have an impact on improving service delivery and quality of life for CMC and their families.

**Registration:** ClinicalTrials.Gov identifier: NCT02928757

For peer review only

ARTICLE SUMMARY

Strengths and limitations of this study:

- This is the first large population-level implementation and mixed methods evaluation assessing the effectiveness of a complex care program for children with medical complexity (Complex Care for Kids Ontario (CCKO)).
- The study cohort represents a diverse sample of complex care patients across Ontario and the utilization of broad outcomes that encompass multiple potential targets of care with parent co-development in terms of the selection of outcome measures used.
- A limitation of this study relates to the challenge of the patient population as many are too unwell to be safely randomized to a waitlist design and therefore are excluded from the study. However, we will be able to use routinely collected health administrative data to describe health care utilization as a single outcome for this population as to not lose the significance of their data.

## INTRODUCTION

Medical and surgical advances have led to improved survival for many previously life-threatening conditions of childhood, such as prematurity[1], complex congenital anomalies[2], and congenital or acquired brain injury[3]. Technologic advances such as ventilator support, feeding tubes and transplantation have successfully prolonged the lives of children with lung, gut and other organ failure. This epidemiologic transition[4] has created a burgeoning population of children with medical complexity (CMC) – children with new morbidities, which are caused by longer survival itself as well as the complications of their life-sustaining therapies and created a new population that requires specialized care delivery in order to meet their complex healthcare needs.

CMC have been defined as “children with chronic conditions with elevated service needs, functional limitations and high healthcare utilization”[5]. Data from Ontario, Canada suggests that while CMC only account for approximately 0.7% of all children, they use about one-third of all child health resources [6]. Studies from the United States have also reported that CMC account for 43% of child deaths, 49% of hospital days, and 75-92% of consumed assistive health technology[7, 8]. CMC and their parental caregivers endure enormous challenges, including: multiple and prolonged hospitalizations[9], frequent medical errors[10], poor care coordination[9, 11], and extraordinary stress[12]. The consequences include poor caregiver health[13], marital discord[14], and profound negative financial impact[15].

Previous research has shown through a series of before- and after- studies, that targeted and integrated Complex Care interventions, most commonly within structured clinical program, may improve the health outcomes of CMC[16], including reducing the burden of caregiving[17] and



mitigating costly and unnecessary healthcare expenditures[18, 19] . However, the validity of these findings has been limited by small sample sizes, lack of control groups and incomplete outcome measures[20]. Published randomized controlled trials (RCTs) report improved parental satisfaction with care, but mixed results for other outcomes. One parallel-group RCT described a decrease in both rates of severe illness and health care costs[21] among children enrolled in a structured Complex Care program, while another cluster RCT reported increased costs with no change in functional status or hospital-based utilization[22].

The Provincial Council of Maternal and Child Health (PCMCH) is a provincial organization, supported by Ontario’s public single-payer of healthcare (the Ministry of Health and Long-Term Care). PCMCH implemented Complex Care Kids Ontario (CCKO), a population-health strategy to improve care for CMC who are Medically Fragile and/or Technology Dependent by providing an integrated approach to medical care and coordination. The strategy aims to improve service delivery, health, and quality of life of the patient-families involved through care coordination across acute and primary care, rehabilitation, home and community care, facilitated by dedicated nurse practitioners[23, 24], who function as key workers to establish seamless integrated care through the development and maintenance of a single, comprehensive and collaborative care plan that is designed to meet the child’s/family’s goals and optimize health outcomes (see Appendix 1). The aim of this study is to compare the effectiveness of the CCKO intervention to usual care for CMC in Ontario.

METHODS/DESIGN

Design

CCKO will utilize a waitlist variation of a randomized controlled trial design (Figure 1). The waitlist approach involves rolling out an intervention over time, whereby all participants are randomized into two groups (A and B) to receive the intervention at different time points determined at random[22, 25]. Group A receives the intervention at the next available appointment time. Group B is placed on a waitlist and receives the intervention after 12 months. This study design uses the time period before the intervention as the control period/baseline, to be compared in parallel to those receiving the intervention[26]. Baseline measurements would be collected at month 0, and Groups A and B would be compared at months 6 and 12. The waitlist design is used in scenarios where it is considered unethical to withhold an intervention with likely benefits, or if there are logistical or financial constraints that prevent the intervention from being administered in whole at one time point[25, 26]. This design generates robust evidence of an intervention program's effectiveness by leveraging real-world operational need for a staggered rollout. For CCKO, it is logistically not feasible for all eligible children to be seen immediately. For example, the initial intake process for key workers is time-intense, requiring the creation of careplans and the development of a patient-provider relationship. A staggered roll out using a waitlist facilitates work-flow and case management, allowing program implementation within the context of human resource limitations. With the exception of patients for whom care coordination is thought to be urgently required (see exclusion criteria a)-c)), all patients referred to CCKO will be randomly assigned to either receive the intervention immediately (at the soonest available clinic appointment) or after the waitlist period (12 months). This approach minimizes the risk of selection bias by retaining the design element of randomization.

1

2

3 **Setting**

4

5 CCKO will be led by four tertiary care children’s hospitals with partnership at multiple

6

7

8 community led clinics (see Appendix 2). These sites display broad geographical representation

9

10 of patients.

11

12

13

14

15 **Participants**

16

17 The target population includes children in Ontario who satisfy the Standard Operational

18

19 definition for CMC developed by the Provincial Council for Maternal and Child Health[27]. The

20

21 specific inclusion criteria are summarized in Figure 2. The criteria adapt existing definitions of

22

23 CMC[5] to a slightly narrower group with technology dependence and/or medical fragility to

24

25 focus on those patients who are most expected to benefit from care coordination such as those

26

27 thought to be at risk of avoidable hospitalizations.

28

29

30

31 *Exclusion Criteria*

32

- 33 a) High utilization of hospital level care
- 34
- 35     o  $\geq 3$  hospitalizations,  $\geq 2$  ICU (intensive care unit) admissions,  $\geq 30$  days of total
- 36
- 37         hospitalization in previous 3 months, excluding newborn admission
- 38
- 39
- 40 b) Tracheostomy and home ventilation
- 41
- 42 c) Medical status is deemed highly fragile and the need for close follow-up is essential by
- 43
- 44         both referring and triaging team
- 45
- 46
- 47 d) Already followed by a complex care team
- 48
- 49 e)  $>16.0$  years of age
- 50
- 51
- 52 f) Inadequate English proficiency to comprehend study questionnaires
- 53
- 54 g) Parent will not be involved in child’s care over entirety of study (2 years)
- 55
- 56
- 57
- 58
- 59
- 60

Patients who satisfy exclusion criteria a)-c) are deemed to urgently require care coordination; as such, it would be unethical to randomize these patients to a waitlist. Patients who satisfy exclusion criteria d) would have experienced the potential benefits of care coordination already.

Patients who satisfy exclusion criteria e) would be in the process of being transitioned to adult care. Patients who satisfy exclusion criteria f) would not be able to complete the study questionnaires as the majority are only validated in English. Patients who satisfy exclusion criteria g) would not be able to complete the study questionnaires at all time points.

Patients whose caregivers cannot complete questionnaires in English will not be involved in the primary analysis however, they will be enrolled in CCKO and provide health care utilization data via health card linkages to health administrative data housed at the Institute for Clinical Evaluative Sciences that will be used in secondary analyses. Similarly, patients who require urgent care coordination are excluded from the study, but will be able to contribute data through similar linkages.

The CCKO intervention involves intensive care coordination, defined as: “deliberate organization of patient care activities between two or more participants to facilitate the appropriate delivery of health care services. Organizing care involves the marshaling of personnel and other resources needed to carry out required care activities and is often managed by the exchange of information among participants responsible for different aspects of care”[28, 29]. Within CCKO, intensive care coordination will specifically include tailored, family/health care provider co-creation and management of care coordination plans which will be facilitated and accounted for by key workers partnering with families. The key worker would have an advanced practice nursing (e.g., nurse practitioner) background and will support providers in

enacting, developing and creating the coordinated care plan between acute care, primary care, rehabilitation, home and community care. Further details about care plan development are available online[30]. The key worker would be available to provide advice from Monday to Friday, 9 AM – 5 PM, and will also develop plans of care for emergencies after hours as part of care plan development. Resources to maintain intervention fidelity among key workers will be maintained with oversight by PCMCH.

The waitlist group consists of CMC who are receiving care from primary and specialty providers, and are waitlisted for Complex Care clinic (pre-enrolment control period). Standard of care during the control period will involve care delivered through a primary care provider (family physician or pediatrician) for routine health care such as vaccination and acute care visits with subspecialty consultation as needed. Currently, this model of care for the vast majority of CMC in Ontario; among ~6,200 patients who are estimated to meet CCKO criteria in Ontario, only ~500 receive care in a structured complex care clinic. At the end of year 1, all CMC randomized to the waitlist group will be enrolled in the complex care clinic and data will continue to be collected for 1 additional year on all participants in an extension phase. Criteria for discontinuing study intervention: participants in the waitlisted arm that experience a change in clinical status and now meet exclusion criteria (e.g., prolonged hospital stay >30 days), will be taken out of the waitlist-arm and will be seen at the next available appointment.

**Outcomes**

A family-engagement strategy was conducted to identify and prioritize outcomes for evaluation[31]. The core set of relevant patient reported outcome measures (PROMs) and patient

reported experience measures (PREMs) was created in a consensus meeting using data collected from a survey completed by 48 families and 86 health care providers[32].

Measures representing these outcomes were selected based on their content applicability to the outcomes, proven psychometric performance (reliability and validity) among children and families. The family-engagement evaluation framework includes general and specific outcomes within the domains of service delivery (primary outcomes); child outcomes (secondary) and parent outcomes (secondary).

#### Primary Outcome:

1. *Coordination of Care Among Health Providers and Families*
2. *Coordination of Care Between Health Providers and Families*
3. *Utility of Follow-Up Planning Tools*

These outcomes will be assessed with the Family Experiences with Coordination of Care (FECC) survey, our primary outcome measure for this study. The FECC has been validated in a study of 1209 CMC patient-families in the United States, and has internal consistency  $>0.7$  with proven discriminant validity for patient-family socioeconomic status and rurality[33], as well as responsiveness to change demonstrated in a recent CMC randomized control trial[28].

#### Child-focused (Secondary) Outcomes: (see Table 1)

1. *Quality of Life and Overall Emotional Health*
2. *Child's Physical Pain*

Children's quality of life and emotional wellbeing will be measured using the World Health Organization definition focused on subjective life appraisal[34] and a positive orientation of mood assessment respectively. These outcomes will be assessed using the Feelings subscale

from the KIDSCREEN-52 (6 items), used in over 250 studies in the child health services literature since its publication in 2005[35, 36]; and represents the most suitable content overlap with CMC children. Children’s physical pain will be measured using proxy reports of pain according to a 10 cm linear Visual Analog Scale (VAS)[37] . Linear VAS is considered superior to other pain reports available for children due to consistencies of interpretation within parent-child dyads, test-retest reliability and measurement precision[38], and is most appropriate for the diverse functional ability of the CMC population.

Parent-focused (Secondary) Outcomes:

1. *Parents’ Quality of Life*
2. *Perceived Emotional and Physical Health*
3. *Energy and Fatigue*
4. *Effects of Child’s Condition on Parents’ Finances and Ability to Work*

Parents’ quality of life will be measured by a subjective life appraisal definition with two scales.

(1) Diener’s Satisfaction with Life Scale (SWLS) (5 items) which is the most validated life satisfaction scale in the health and social sciences literature[39, 40] and (2) an adapted version of the KIDSCREEN Feelings subscale[35]. Parents’ perceived health, energy, and fatigue will be assessed with short forms of the Patient Reported Outcomes Measurement Information System (PROMIS) General Health (10 items); Sleep (8 items); and Fatigue (8 items) scales. These scales have been validated, have norm references data for comparison and have shown good to excellent psychometric properties among caregivers[41, 42]. Financial impact on parents’ will be measured using an Expense Diary survey created by the study team. This survey will capture financial impact based on lost time and ability to work, as well as out of pocket expenses for

health care services, equipment, and travel using scales customized for CMC and standardized relative to various child health studies with the support of the study health economist (Moretti; see Appendix 3).

### Health System (Secondary) Outcomes:

We will link the patient-reported evaluation of the CCKO initiative with encoded health linked administrative data housed at the Institute for Clinical Evaluative Sciences (ICES) for consenting participants (see Appendix 4 for list of datasets). ICES is a not-for-profit research institute listed in Ontario's health privacy legislation as a Prescribed Entity allowing the use of health data on all Ontario residents for the purposes of research. These datasets will be linked using unique encoded identifiers and analyzed at ICES. Outcomes will include:

1. Overall health care cost (using algorithms developed via the Ontario Case Costing Initiative)
2. Hospitalizations (number, length of stay, and cost)
3. Emergency department use (number and cost)
4. Outpatient pharmacy use (number of medications and cost)
5. Home health care use (cost)
6. Primary care visits (number and cost)
7. Sub-specialty visits (number and cost)

### **Sample Size**



We determine the sample size to be 140 (70/arm) based on the following criteria: i) Two-sided test of the null hypothesis at the 5% level; ii) Power of 80%; iii) 10% lost-to-follow-up; projected smallest clinically important difference of 0.5 of the within-patient standard deviation[43].

The within-patient standard deviation is needed to obtain a baseline measure from the waitlisted group as reference. The standard deviation of the primary outcome, FECC=0.56 is based on pooled data from the developer’s CMC validation sample[33]. The required sample size is considered feasible as it is estimated that a pool of about 250 patients are readily identifiable for recruitment at CCKO sites.

**Recruitment**

At each site, clinical staff will identify eligible patients who are referred to CCKO from clinicians based on inclusion criteria. A study information letter will be sent to the families of eligible patients who will be contacted by the research assistant. An approximate 50% recruitment rate from a pool of N=400 (200/year) is conservatively estimated based on previous recruitment and current waitlists.

Questionnaires would take place at baseline, 6, 12, and 24 months. Upon completion of each time point, families will receive a \$20 gift card to a drug store. A subsample of approximately 10-15 families in the intervention arm will be approached starting at 12 months for qualitative interviewing to explore their experience with the intervention.

**Randomization**

CCKO randomization will done using a computer-generated algorithm stratified by centre. Blocking will be used to ensure that the two groups are the same size throughout the trial for

each site as well as for the trial as a whole. An allocation ratio of 1:1 with random block sizes between 6 and 8 will be used within each stratum (centre). This will help to ensure that clinicians or investigators will not decipher the block size.

## Data Collection

Upon obtaining consent, the Research Assistant will assign a research subject ID number to patients. Study data will be collected and managed using REDCap (Research Electronic Data Capture) electronic data capture tools[44]. Patient-families can opt to complete data collection by iPads or hardcopy. At home, patient-families can complete surveys via REDCap. This flexible methods of data collection will maximize diversity of respondents ideally as well as support family needs and preferences for data collection. A demographics survey will be administered at baseline.

## Data Management

A REDCap study database will be designed and maintained by the Research Coordinator at The Hospital for Sick Children. The data on the various forms will be linked by a unique research subject ID. The Research Coordinator will extract study data from questionnaires via the REDCap interface to complete the study-specific data collection forms. An external user interface will also be created on REDCap for parents who opt to complete the surveys online. All personal identifying information will be removed from the electronic study database. A separate secure list of research subjects' names and contact information will be maintained in a Microsoft Excel spreadsheet for the purpose of completing the follow-up questionnaires. All study-related electronic data files will be password-protected and reside on the Hospital server.

Only members of the research team will have access to the server study file location via password-protected computers. Password-protected databases from each site will be transferred to the Institute for Clinical Evaluative Sciences through a Virtual Private Network.

**Statistical analysis**

An overview of the included outcomes and their measures are presented in **Table 1**.

*Patient and Caregiver Characteristics*

Baseline patient characteristics and descriptive variables will be presented for each treatment arm: age, sex, diagnosis, ethnicity, medications, medical devices and hospitalizations. Baseline caregiver characteristics and descriptive variables will be presented as well: age, sex, education level, employment status, ethnicity, primary language. For continuous variables, means and standard deviations or medians (interquartile ranges) will be presented. For categorical variables, proportions will be presented.

*Primary Outcome*

The main analysis will be a comparison of service delivery outcomes (i.e., FECC) between the intervention and waitlist groups at 12 months. The principle of intention-to-treat will be applied. For effectiveness each outcome variable at Month 12 will be compared between groups using an analysis of covariance with the corresponding baseline score as the covariate. A two-sided, level 0.05 test of hypothesis will be applied.

*Secondary Outcomes*

Data collection at 0 and 6 months will be used to perform test-retest reliability, to establish baseline reference measures and to assess for stability of outcome changes (24 months). Secondary child-focused and parent-focused outcomes will be compared at 0, 6 and 12 months

using Bonferroni corrections to account for multiple testing. All secondary health system outcomes will be compared between the intervention and control (wait period) as well.

### *Additional Analyses*

We will examine health system outcomes using regression modeling to explore the relationships between PROMs and health utilization patterns (for example, the relationship of out-of-pocket expenditures with availability of home health care services).

## **DISCUSSION**

While growing attention has been provided to CMC in recent years[45], there are important gaps in the literature regarding the optimal care delivery model for CMC [17-20]. Before- and after-studies have shown possible benefit but there has been few rigorous randomized controlled trials conducted that look at multiple outcomes including service delivery, parent and child health outcomes as well as health system outcomes such as health utilization. Furthermore, this is the first study that prioritized outcomes as identified by patients and families directly in order to understand if a complex care program was successful in the eyes of a family by selecting outcomes that matter most to them. The care delivery model in CCKO - utilizing a key worker and comprehensive care plans - is a time intensive and possibly costly one. Well-designed evaluations are needed to examine how they relate to outcomes of care for this population[46]. Several aspects of this trial are important to highlight as innovative and novel.

First, in contrast to other trials that target CMC within a single health care setting (e.g., a children's hospital), this study focuses on population-level implementation and evaluation in Ontario, Canada's most populous province. This setting allows the implementation of complex

care coordination within a wide geographic area combining both densely populated urban areas with more rural locations for which travel to specialized care is challenging. The large number of sites participating in this study account for the majority of CMC care in Ontario. This environment is unique in terms of the current literature as these patients reflect population-level CMC representation, with outcome data availability across the continuum of care available from a large provincial repository of data. The focus on so many sites creates some challenges in both implementation and evaluation across diverse settings. However, this evaluation also provides an opportunity for the development of generalizable knowledge not only for publically-funded healthcare delivery systems, but also for broad groups of payers focused on other high-need/high-cost populations[47].

Second, the outcome measures used are patient and family-informed. Previous literature has highlighted the need for uniquely developed outcome measures for CMC recognizing the nature of their health care usage and trajectory. Before recruitment began, the outcome measures were determined through a process of direct consultation with parents of CMC[48]. Previous evaluations of CMC care have relied primarily upon readily available data (e.g. claims data or other administrative datasets), with minimal patient- and family-reported input. Previous patient-reported outcome measures utilized in evaluations have not been validated in a CMC population. A strength of this study is the utilization of broad outcomes that encompass multiple potential targets of care. We chose care coordination as the primary outcome measure because it is the primary target for change as in this patient population and the measurement instrument has been validated in CMC. Unfortunately, expectation of a change in disease status is not meaningful or realistic in many CMC, whereas improved navigation of the healthcare system is an important

and improvable target of care. Biomedical endpoints, although important, are not meaningful in such a heterogeneous population.

Third, the study has been designed to mitigate risk of bias. It is anticipated that some patients may be excluded; a concern are those who are marginalized (e.g., non-English speaking), or are deemed too urgent to enroll in a waitlist. We aim to conduct a secondary future study focused on comparing such patients to contemporaneous controls using administrative data to ensure knowledge generation about the impact of CCKO in this group as well, albeit with a higher risk of bias that would otherwise be attenuated with randomization (e.g., unmeasured confounders).

Fourth, the focus of this study is not solely quantitative in nature. We have elicited a mixed methods approach. We will conduct exit interviews with a subset of intervention arm parents to capture the overall experience with the intervention, areas of improvement, barriers as well as perceived benefits and harms. This approach can enable the team to identify what aspects of the CCKO intervention are more or less effective, for whom, in what context and why.

Lastly, the integrated knowledge translation is truly unique in that the direct provincial implementation of the CCKO roll out has been matched directly with the evaluation such that the knowledge end-user was a part of the study team from the outset. The integrated KT approach has included families caring for CMC, policy-makers and widely representative clinicians such as nurses and physicians. This large integrative model allows direct translation of results and seamless integration of knowledge.

## ETHICS AND DISSEMINATION

The protocol has been approved by Research Ethics Boards at all sites. The study Research Assistant will obtain informed consent from parental caregivers. Informed consent/assent will be obtained from all those who are able to provide it.

**Adverse Event Reporting**

While there are no adverse events expected in the context of the intervention being administered, any adverse events will be reported to the Research Ethics Board. All adverse events and adverse reactions will also be reported to the Primary Investigator within 24 hours.

**Dissemination**

CCKO represents a fully integrated knowledge transfer and exchange paradigm. The research team have worked with patient-families and PCMCH to craft the provincial strategy, providing population-based data to understand the target population (numbers/location of children, patterns of care, health system costs). The committees overseeing implementation and evaluation encompass key knowledge users (patients, families, clinicians, administrators, policy-makers), allowing for seamless KT. Executive Summaries and/or Presentations will be shared for wide dissemination to a variety of organizations/collaboratives. Academic KT will occur through presentation at academic conferences and publications in high-impact, peer-reviewed journals. At study end, results will be available on CCKO’s website.

**TRIAL STATUS**

Recruitment began January 2017 and there are 107 participants of a target of 140 as of October 2018. The study is on track to complete enrolment in 2019. A copy of the full-length protocol is available upon request.

**Author Contributions** All authors conceived the study and obtained funding. All authors participated in design of the trial. EC and AW provided statistical expertise. JO, EC and CC wrote the first draft of the manuscript. All authors read and approved the manuscript in its final version.

**Trial Registration** Trial registered at ClinicalTrials.Gov NCT02928757

**Funding** Canadian Institute of Health Research (Funding reference number: FDN-143315 and Ontario Strategy for Patient-Oriented Research Support Unit IMPACT (Innovative, Measurable, Patient-oriented, Appropriate, Collaborative and Transformative) Award

**Disclaimer** The funder did not have any role in the study design. This study was supported by ICES, which is funded by an annual grant from the Ontario Ministry of Health and Long-Term Care (MOHLTC). The opinions, results and conclusions reported in this paper are those of the authors and are independent from the funding sources. No endorsement by ICES or the Ontario MOHLTC is intended or should be inferred.

**Competing interests** None declared

**Patient consent** Not required

**Ethics approval** This study was approved by the local REB at: The Hospital for Sick Children (REB# 1000053509), Hamilton Health Sciences (project # 2017-2161), Children's Hospital of Eastern Ontario (ROMEO# 20160299), London Health Sciences Center (project ID 108143), Michael Garron Hospital (REB# 702-1701-MNC-009), Credit Valley Hospital (ID# 855), North York General Hospital (REB# 16-0044), Royal Victoria Hospital (REB# 015), Orillia Soldiers' Memorial Hospital, and Peterborough Regional Health Centre.

**Provenance and peer review** Not commissioned; externally peer reviewed.



Figure 1. Complex Care for Kids Ontario Evaluation Flow Chart for Referrals

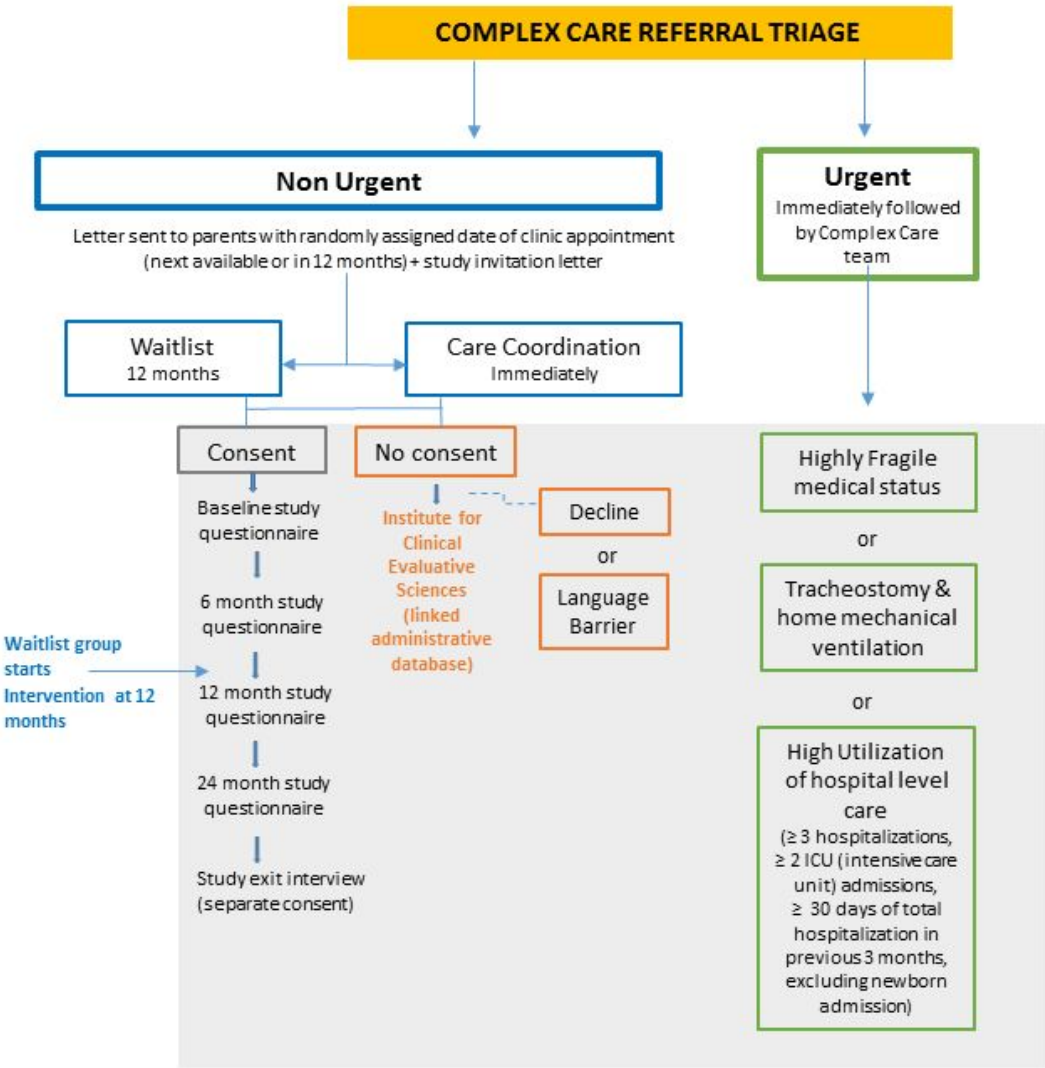


Figure 2. Complex Care for Kids Ontario Inclusion Criteria[27]

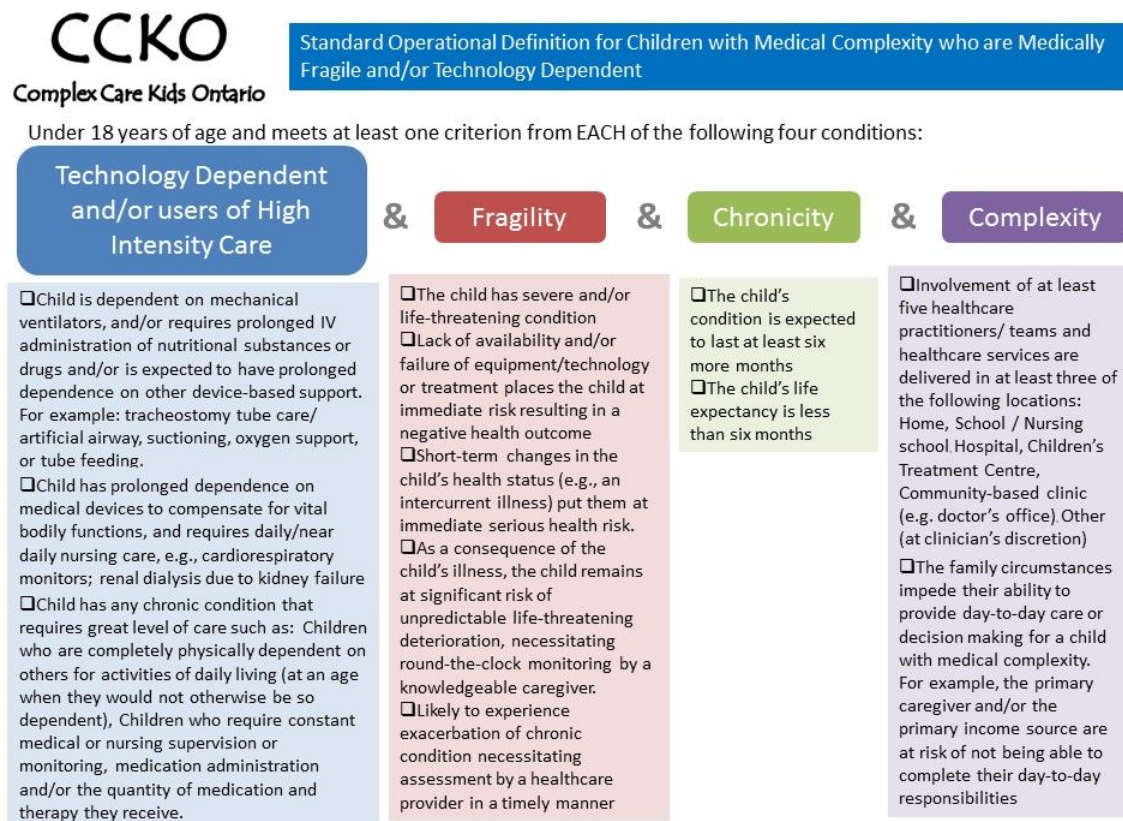
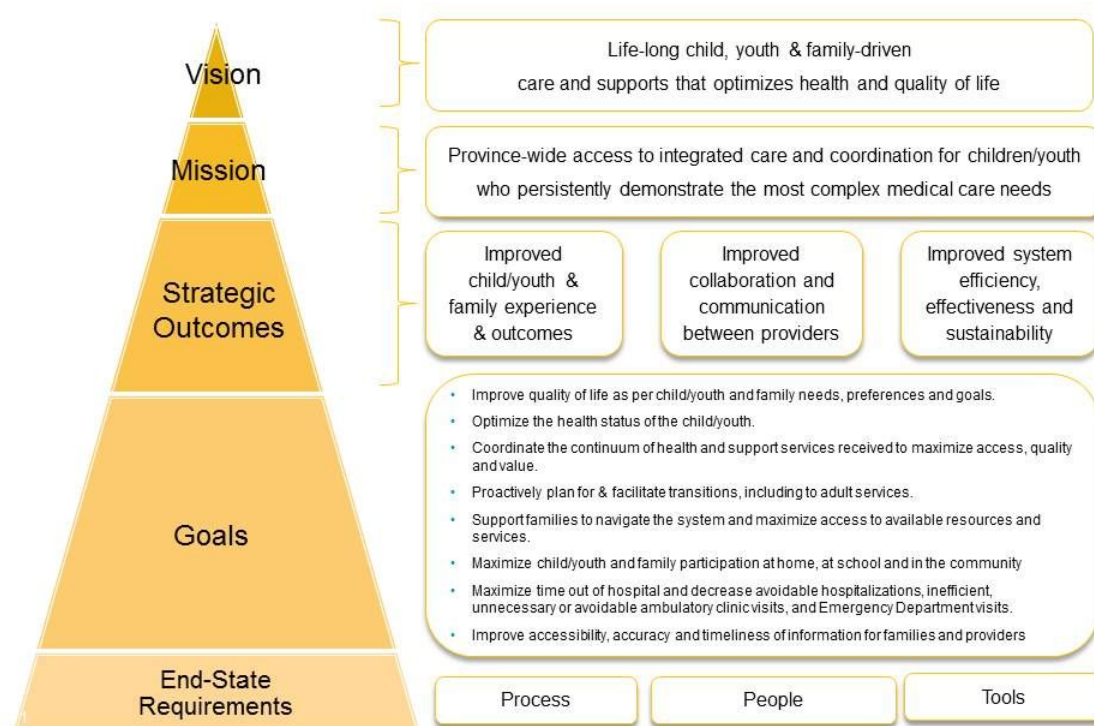


Table 1. Overview of outcomes & associated measures

Service Delivery Outcomes (Measurement Tool)	Parent Outcomes (Measurement Tool)	Child Outcomes (Measurement Tool)	System Outcomes (Measurement Tool)	Process Outcomes (Measurement Tool)
Coordination Among Providers (Family Experiences with Care. Coordination)[33]	Life Satisfaction (KIDSCREEN[35], Satisfaction with Life Scale[39, 40])	Life Satisfaction (KIDSCREEN)[35]	Health Utilization e.g. Hospital admissions, ER visits, etc. (available for all Ontario residents in linked administrative databases housed at the Institute for Clinical Evaluative Sciences – see Appendix 4 for list of databases)	Patient and family experience (Qualitative Interviews)
Coordination Between Providers and Families (Family Experiences with Care Coordination)[33]	Overall Health (Patient-Reported Outcomes Measurement Information System)[41, 42]	Physical Pain (Visual Analog Scale)[37]		
Utility of Planning/Follow-Up Tools (Family Experiences with Care Coordination)[33]	Energy and Fatigue (Patient-Reported Outcomes Measurement Information System)[41, 42]			
Patient Centered Information (Family Experiences with Care Coordination)[33]	Out of Pocket Expenses (Expense Diary – see Appendix 3)			
Parental Support in the Community (Family Experiences with Care Coordination)[33]				

## Appendix 1. Complex Care for Kids Ontario Strategic Framework[49]



Appendix 2. Complex Care for Kids Ontario Study Sites

Site Name	Location
The Hospital for Sick Children (SickKids)	Toronto, ON
Children’s Hospital of Eastern Ontario	Ottawa, ON
London Health Sciences Centre	London, ON
Hamilton Health Sciences Centre	Hamilton, ON
North York General Hospital	Toronto, ON
Peterborough Regional Health Centre	Peterborough, ON
Orillia Soldiers’ Memorial Hospital	Orillia, ON
Royal Victoria Hospital	Barrie, ON
Michael Garron Hospital	Toronto, ON
Credit Valley Hospital	Mississauga, ON

### Appendix 3. Expense Diary

#### CQ1-EXTRACURRICULAR ACTIVITIES

CQ1a. Does your child participate in extracurricular activities (outings/sports/hobbies)?	<input type="checkbox"/> Yes <input type="checkbox"/> No (continue to CQ2a) <input type="checkbox"/> Don't Know (continue to CQ2a)
CQ1b How many hours of extracurricular activities does your child participate on average per month? (Describe to the best of ability)	_____ hours of activity on average per month

#### CQ2-ACADEMIC ACTIVITIES

CQ2a. Is your child currently enrolled in school outside the home?	<input type="checkbox"/> Yes <input type="checkbox"/> No Reason: _____ (continue to CQ3a)
CQ2b. If Yes, does your child attend full-time (every day) or part time?	<input type="checkbox"/> Full-time (continue to CQd) <input type="checkbox"/> Part time (continue to CQ2c)
CQ2c. If your child attends school part time, how many days of school do they attend per week on average?	<input type="checkbox"/> 1 day <input type="checkbox"/> 2 days <input type="checkbox"/> 3 days <input type="checkbox"/> 4 days <input type="checkbox"/> N/A
CQ2d. Thinking back over the past 6 months, how many days of school does your child miss on average per month?	_____ days missed on average per month
CQ2e. Thinking back over the past 6 months, how much do you spend on travel to/from school for your child on average per month?	\$ _____ on average per month AND Distance travelled daily to get child to schooling _____ km



CQ3. DOCTOR VISITS

These questions are only about when your child visited the doctor’s office or clinic. This does not include emergency room visits or hospital stays.

CQ3a. Does your child use public transit, taxi or accessible transit services (e.g. Wheel trans)?	<input type="checkbox"/> Yes <input type="checkbox"/> No (continue to CQ3b)
CQ3ai.If your child uses public transit, taxi, or Wheel Trans, how much money do you usually spend traveling to and from the doctor’s office/clinic per visit?	\$ _____
CQ3b. Do you or another family member drive to your child’s doctor’s office/clinic?	<input type="checkbox"/> Yes <input type="checkbox"/> No (continue to CQ3c)
CQ3bi. If you or another family member drives, what is the distance to your child’s doctor’s office/clinic?	_____ km
CQ3c. On average how much do you spend on parking at the doctor’s office/clinic?	\$ _____ per visit ----- ----- <input type="checkbox"/> Nothing <input type="checkbox"/> Not applicable

**CQ4-INSURANCE COVERAGE**

CQ4a. Do you have a drug plan that pays for any of your child's medications (ie. Employee benefit package, Ontario Drug Benefit, OHIP+)?	<input type="checkbox"/> Yes (continue to CQ5b) <input type="checkbox"/> No (continue to CQ5h) <input type="checkbox"/> Don't Know (continue to CQ5h)
CQ4b What is your Drug Plan?	<input type="checkbox"/> 1. Employee benefit package <input type="checkbox"/> 2. Government program (ie. Ontario Drug Benefit, OHIP+) <input type="checkbox"/> 3. Other (Please specify: _____) <input type="checkbox"/> 4. Don't know, don't remember
CQ4c. When you have to pay for prescription drugs, what is the percentage of prescription medication costs that you pay on average?	_____ % <input type="checkbox"/> Don't know
CQ4d. Do you have a private health plan that covers other medical expenses such as physical therapy, ambulance services, medical devices etc?	<input type="checkbox"/> Yes <input type="checkbox"/> No (continue to CQ6a) <input type="checkbox"/> Don't Know (continue to CQ6a)
CQ4e. How much do you or your partner pay into this plan or how much is deducted from your pay cheque per month?	\$_____ per month <input type="checkbox"/> Nothing <input type="checkbox"/> Don't Know



CQ5. MEDICATION

CQ5a. Has [YOUTH] taken any prescription or over-the-counter medication in the last 6 months?	<input type="checkbox"/> Yes (complete table below) <input type="checkbox"/> No
---	--

If yes, please list any medication that you have taken in the last 6 months.

Name of medication	Reason [CHILD] takes this medication	Dose (mg)	Formulation (pill, liquid, inhaler, etc)	Frequency per day?

CQ5ba. Has your child used any over-the-counter medications, dietary supplements (e.g. vitamins), naturopathic, or homeopathic treatments in the last 6 months?	<input type="checkbox"/> Yes (complete table below) <input type="checkbox"/> No
---	--

If yes, please list items below:

Name of item	Reason [child] needs this	Financial coverage Check all that apply	If you paid some or all, please state the amount you paid (\$)
		<input type="checkbox"/> Insurance <input type="checkbox"/> Self Paid <input type="checkbox"/> Donated	
		<input type="checkbox"/> Insurance <input type="checkbox"/> Self Paid <input type="checkbox"/> Donated	
		<input type="checkbox"/> Insurance <input type="checkbox"/> Self Paid <input type="checkbox"/> Donated	
		<input type="checkbox"/> Insurance <input type="checkbox"/> Self Paid <input type="checkbox"/> Donated	
		<input type="checkbox"/> Insurance <input type="checkbox"/> Self Paid <input type="checkbox"/> Donated	
		<input type="checkbox"/> Insurance <input type="checkbox"/> Self Paid <input type="checkbox"/> Donated	
		<input type="checkbox"/> Insurance <input type="checkbox"/> Self Paid <input type="checkbox"/> Donated	

CQ6. MEDICAL DEVICES

CQ6a. Has your child needed to use any medical/assistance devices or equipment in the last 6 months (wheelchair, crutches, brace, syringes, VitaMix blender for special food preparation)?	<input type="checkbox"/> Yes (complete table below) <input type="checkbox"/> No
--	--

If yes, please list devices below:

Name of item	Reason [child] needs this	Financial coverage Check all that apply	If you paid some or all, please state the amount you paid (\$)
		<input type="checkbox"/> ADP (Assistive Devices Program) <input type="checkbox"/> Insurance <input type="checkbox"/> Self Paid <input type="checkbox"/> Donated	
		<input type="checkbox"/> ADP (Assistive Devices Program) <input type="checkbox"/> Insurance <input type="checkbox"/> Self Paid <input type="checkbox"/> Donated	
		<input type="checkbox"/> ADP (Assistive Devices Program) <input type="checkbox"/> Insurance <input type="checkbox"/> Self Paid <input type="checkbox"/> Donated	
		<input type="checkbox"/> ADP (Assistive Devices Program) <input type="checkbox"/> Insurance <input type="checkbox"/> Self Paid <input type="checkbox"/> Donated	

## CQ7. EMERGENCY ROOM VISITS

These questions are only about when you had to bring your child to the emergency room. This does not include to doctor visits or to days when your child was admitted to the hospital.

CQ7a. Has your child gone to the hospital in an ambulance in the last 6 months?	<input type="checkbox"/> Yes <input type="checkbox"/> No (continue to CQ8g)
CQ7b. How many times did your child do so?	# of times
CQ7e. Did you have to pay for the ambulance services?	<input type="checkbox"/> Yes <input type="checkbox"/> No (continue to CQ8g) <input type="checkbox"/> Don't know/can't remember (continue to CQ8g)
CQ7f. How much did you spend on these ambulance services per visit?	\$ _____
CQ7g. Has your child gone to the emergency room <b>by some other method of transportation</b> in the last 6 months?	<input type="checkbox"/> Yes <input type="checkbox"/> No (continue to CQ9)
CQ7h. How many times did your child do so?	# of times
CQ7i. On average, how much did you spend on transportation to the emergency room (including parking, if applicable)?	\$ _____/visit

CQ8. HOSPITAL ADMISSIONS

These questions are only about when your child was admitted to hospital. This does not include emergency room visits.

CQ8a. Has been admitted to the hospital in the last 6 months?	<input type="checkbox"/> Yes <input type="checkbox"/> No (continue to CQ10)
CQ8b. How many times was your child admitted to the hospital?	_____ # of times
CQ8c. On average, how much did you spend on transportation to the hospital (including parking, taxis, public transportation mileage)?	\$_____/day and Distance from home to hospital _____ km

**CQ9. ALLIED HEALTH PROFESSIONALS AND SOCIAL SERVICE PROVIDERS**

CQ9a. Has any allied health care or social service provider <b>COME TO VISIT your</b> child either at home, residence or school in the last 6 months? (See list of providers below)	<input type="checkbox"/> Yes <input type="checkbox"/> No
---	---

*Providers include:*

- |  |                                |
|--|--------------------------------|
| - Chiropractor                                       | - Optometrist                  |
| - Psychologist                                       | - Dentist                      |
| - Physiotherapist                                    | - Social Worker                |
| - Occupational Therapist                             | - Naturopath or Homeopath      |
| - Speech Language Pathologist                        | - Adolescent/school counsellor |
| - Podiatrist or Chiropodist                          | - Children's aid               |
| - Nutritionist or Dietitian                          | - Family counsellor            |
| - Nurse Practitioner                                 | - Support group                |
| - Visiting Nurses (i.e., Home Care) or Private Nurse |                                |

If yes, please list service provider below (please do not enter provider's name):

Type of Health Professional	Number of visits	Average Amount Spent per Visit (\$)	Self paid or insurance?
	_____ average visits per month		<input type="checkbox"/> Self Paid <input type="checkbox"/> Insurance <input type="checkbox"/> Both If Both, what % by insurance? _____ <input type="checkbox"/> Don't know/can't remember
	_____ average visits per month		<input type="checkbox"/> Self Paid <input type="checkbox"/> Insurance <input type="checkbox"/> Both If Both, what % by insurance? _____ <input type="checkbox"/> Don't know/can't remember
	_____ average visits per month		<input type="checkbox"/> Self Paid <input type="checkbox"/> Insurance <input type="checkbox"/> Both If Both, what % by insurance? _____ <input type="checkbox"/> Don't know/can't remember

CQ9b. Has your child <b>GONE TO VISIT</b> any health care or social service provider at their place of practice (e.g. their office or at the hospital) in the last 6 months?	<input type="checkbox"/> Yes <input type="checkbox"/> No
--	---

If yes, please list service provider below (please do not enter provider’s name):

Type of Health Professional	Number of visits	Average Amount Spent per Visit (\$)	Self paid or insurance?	Average amount spent on parking per visit (\$)	Mileage (km)
	average visits per month		<input type="checkbox"/> Self Paid <input type="checkbox"/> Insurance <input type="checkbox"/> Both If Both, what % by insurance? _____		
	average visits per month		<input type="checkbox"/> Self Paid <input type="checkbox"/> Insurance <input type="checkbox"/> Both If Both, what % by insurance? _____		
	average visits per month		<input type="checkbox"/> Self Paid <input type="checkbox"/> Insurance <input type="checkbox"/> Both If Both, what % by insurance? _____		
	average visits per month		<input type="checkbox"/> Self Paid <input type="checkbox"/> Insurance <input type="checkbox"/> Both If Both, what % by insurance? _____		

**CQ10. LOSS OF TIME FROM WORK (PAID OR UNPAID)**

CQ10a. Do you work in paid employment or are you on paid leave?	<input type="checkbox"/> Yes <input type="checkbox"/> No
CQ10b. Do you participate in any volunteer activities or unpaid employment?	<input type="checkbox"/> Yes <input type="checkbox"/> No
CQ10c. Thinking back over the past 6 months, have you had to miss any time from work/volunteer activities to go to the doctor, emergency room or while your child was admitted to the hospital?	<input type="checkbox"/> Yes <input type="checkbox"/> No (continue to CQ10e)
CQ10d. Thinking back over the past 6 months, can you estimate on average how many days per month have you had to take off?	_____ average days per month
CQ10e. Thinking back over the past 6 months, when your child went to the doctor, emergency room or was admitted to the hospital, <b>has anyone else</b> (such as another caregiver) had to miss time from paid employment to help you care for your child or accompany your child?	<input type="checkbox"/> Yes <input type="checkbox"/> No (continue to CQ10g) <input type="checkbox"/> Not applicable
CQ10f. Thinking back over the past 6 months, can you estimate on average how many days per month this other person had to take off each month?	_____ average days each month
CQ10g. Thinking back over the past 6 months, have you had to pay someone to care for your child (child in study) so that you could continue with your normal activities/homemaking or paid/unpaid employment?	<input type="checkbox"/> Yes <input type="checkbox"/> No (continue to CQ10i) <input type="checkbox"/> Don't know/Can't remember
CQ10h. Thinking back over the past 6 months, can you estimate on average how much you spent on this childcare per month?	Average spent per month \$ : _____ <input type="checkbox"/> Don't know/Can't remember
CQ10i. Thinking back over the past 6 months, were you or other family members prevented from engaging in any activities such as shopping, volunteer, work, visiting friends, going to the movies, etc. to care for your child?	<input type="checkbox"/> Yes <input type="checkbox"/> No (continue to CQ10k) <input type="checkbox"/> Don't know/Can't remember <input type="checkbox"/>
CQ10j. Thinking back over the past 6 months, can you estimate on average how many days per month this was?	_____ average days per month
CQ10k. Thinking back over the past 6 months, were you or other family members prevented from engaging in your regular homemaking tasks to care for your child?	<input type="checkbox"/> Yes <input type="checkbox"/> No (go to CQ10m)



	<input type="checkbox"/> Don't know/Can't remember
CQ10l. Thinking back over the past 6 months, can you estimate on average how many days per month this was?	_____ average days per month
CQ10m. Thinking back over the past 6 months, have you had to pay for any individual to assist you with homemaking activities?	<input type="checkbox"/> Yes <input type="checkbox"/> No (go to CQ10o) <input type="checkbox"/> Not applicable
CQ10n. Thinking back over the past 6 months, can you estimate on average how much you spent per month on assistance with homemaking activities?	Amount spent per month \$ _____
CQ10o. Thinking back over the past 6 months, have you had to pay for any individual to care for your <b>other</b> children while you were caring for child in study?	<input type="checkbox"/> Yes <input type="checkbox"/> No (go to CQ11a) <input type="checkbox"/> Don't know/Can't remember
CQ10p. Thinking back over the past 6 months, can you estimate on average how much you spent childcare per month?	Amount spent per month \$ _____ <input type="checkbox"/> Don't know/Can't remember

**CQ11 – CHANGES TO HOME SUCH AS RENOVATIONS**

CQ11a. Have you had to do any changes to your home such as renovations (a ramp or a special bed) to accommodate your child?	<input type="checkbox"/> Yes <input type="checkbox"/> No (continue to CQ12)
CQ11b. How much in total did you pay for these changes to your home?	\$_____ spent in total on home renovations
CQ11c. What percentage of these costs were covered by other funding sources?	_____ %

**CQ12 – ACCESSIBLE VAN/VEHICLE**

CQ12a. Have you had to purchase an accessible van/vehicle to accommodate your child?	<input type="checkbox"/> Yes <input type="checkbox"/> No (continue to CQ13)
CQ12b. How much in total did you pay for the accessible van/vehicle?	\$_____ spent in total on accessible vehicle
CQ12c. What percentage of these costs were covered by other funding sources?	_____ %

**CQ13 – OTHER ONE-TIME EXPENSES**

CQ13a. Have you had any other one-time expenses to accommodate your child?	<input type="checkbox"/> Yes <input type="checkbox"/> No
CQ13b. What is the total of these costs?	\$_____ spent in total on other one-time expenses?

Appendix 4. List of Institute for Clinical Evaluative Sciences (ICES) Datasets

Dataset Name	Dataset Description
ADP	Assistive Devices Program: program which covers customized equipment and specialized supplies for low-income and most medically high-risk children - costing data for equipment and supplies
DAD	Discharge Abstract Database: hospital diagnostic codes
HCD	Home Care Database: provincial government in-home provider and case-management visits – home care data
IPDB	ICES physical database: care provider information
LHIN	Local Health Integration Network: coding and geography data
NACRS	National Ambulatory Care Reporting System: emergency and same-day surgery data
ODB	Ontario Drug Benefit: program which covers medications for low-income and most medically high-risk children – medication costing data
OHIP	Ontario Health Insurance Plan: physician billing – costing data
OMHRS	Ontario Mental Health Reporting System: mental health care services use data
PCCF	Postal Code Conversion File: geography data
RPDB	Registered Persons Database: demographic and vital statistic data for all Ontario residents eligible for public health insurance

## References

1. Wilson-Costello D, Friedman H, Minich N, et al. Improved survival rates with increased neurodevelopmental disability for extremely low birth weight infants in the 1990s. *Pediatrics* 2005;115(4):997-1003. doi: 115/4/997 [pii]10.1542/peds.2004-0221 [published Online First: 2005/04/05]
2. Tennant PW, Pearce MS, Bythell M, et al. 20-year survival of children born with congenital anomalies: a population-based study. *Lancet* 2010;375(9715):649-56. doi: S0140-6736(09)61922-X [pii]10.1016/S0140-6736(09)61922-X [published Online First: 2010/01/23]
3. Plioplys AV. Survival rates of children with severe neurologic disabilities: a review. *Semin Pediatr Neurol* 2003;10(2):120-9. [published Online First: 2003/10/24]
4. Wise PH. The transformation of child health in the United States: social disparities in child health persist despite dramatic improvements in child health overall. *Health Affairs* 2004;23(5):9-25.
5. Cohen E, Kuo DZ, Agrawal R, et al. Children with medical complexity: an emerging population for clinical and research initiatives. *Pediatrics* 2011;127(3):529-38. doi: 10.1542/peds.2010-0910 [published Online First: 2011/02/23]
6. Cohen E, Berry JG, Camacho X, et al. Patterns and costs of health care use of children with medical complexity. *Pediatrics* 2012;130(6):e1463-70. doi: 10.1542/peds.2012-0175 [published Online First: 2012/11/28]
7. Simon TD, Berry J, Feudtner C, et al. Children with complex chronic conditions in inpatient hospital settings in the United States. *Pediatrics* 2010;126(4):647-55. doi: peds.2009-3266 [pii]10.1542/peds.2009-3266 [published Online First: 2010/09/22]

8. Berry JG, Hall M, Hall DE, et al. Inpatient growth and resource use in 28 children's hospitals: a longitudinal, multi-institutional study. *JAMA Pediatr* 2013;167(2):170-7. doi: 10.1001/jamapediatrics.2013.432

9. Dosa N, Boeing N, Ms N, et al. Excess risk of severe acute illness in children with chronic health conditions. . *Pediatrics* 2001;107(3):499-504.

10. Slonim A, LaFleur B, Ahmed W, et al. Hospital-reported medical errors in children. *Pediatrics* 2003;111(3):617-21.

11. Matlow A, Wright J, Zimmerman B, et al. How can the principles of complexity science be applied to improve the coordination of care for complex pediatric patients? *Qual Saf Health Care* 2006;15(2):85-8.

12. Raina P, O'Donnell M, Rosenbaum P, et al. The health and well-being of caregivers of children with cerebral palsy. *Pediatrics* 2005;115(6):e626-36.

13. Brehaut JC, Kohen DE, Garner RE, et al. Health among caregivers of children with health problems: findings from a Canadian population-based study. *Am J Public Health* 2009;99(7):1254-62. doi: 10.2105/AJPH.2007.129817

14. Sabbeth BF, Leventhal JM. Marital adjustment to chronic childhood illness: a critique of the literature. *Pediatrics* 1984;73(6):762-8. [published Online First: 1984/06/01]

15. Ratliffe CE, Harrigan RC, Haley J, et al. Stress in families with medically fragile children. *Issues in Comprehensive Pediatric Nursing* 2002;25(3):167-88.

16. Cohen E, Friedman JN, Mahant S, et al. The impact of a complex care clinic in a children's hospital. *Child Care Health Dev* 2010;36(4):574-82. doi: CCH1069 [pii] 10.1111/j.1365-2214.2009.01069.x [published Online First: 2010/03/27]

17. Cohen E, Lacombe-Duncan A, Spalding K, et al. Integrated complex care coordination for children with medical complexity: a mixed-methods evaluation of tertiary care-community collaboration. *BMC Health Serv Res* 2012;12:366. doi: 10.1186/1472-6963-12-366
18. Cohen E, Bruce-Barrett C, Kingsnorth S, et al. Integrated complex care model: lessons learned from inter-organizational partnership. *Healthcare quarterly* 2011;14 Spec No 3:64-70. [published Online First: 2012/01/04]
19. Berry JG, Hall M, Neff J, et al. Children with medical complexity and medicaid: spending and cost savings. *Health Aff (Millwood)* 2014;33(12):2199-206. doi: 10.1377/hlthaff.2014.0828
20. Cohen E, Jovcevska V, Kuo DZ, et al. Hospital-based comprehensive care programs for children with special health care needs: a systematic review. *Archives of pediatrics & adolescent medicine* 2011;165(6):554-61. doi: 10.1001/archpediatrics.2011.74 [published Online First: 2011/06/08]
21. Mosquera RA, Avritscher EB, Samuels CL, et al. Effect of an enhanced medical home on serious illness and cost of care among high-risk children with chronic illness: a randomized clinical trial. *JAMA* 2014;312(24):2640-8. doi: 10.1001/jama.2014.16419
22. Simon TD, Whitlock KB, Haaland W, et al. Effectiveness of a Comprehensive Case Management Service for Children With Medical Complexity. *Pediatrics* 2017;140(6) doi: 10.1542/peds.2017-1641 [published Online First: 2017/12/02]

23. Gresley-Jones T GP, Wade S, Gillespie R. Inspiring Change: How a Nurse Practitioner-Led Model of Care Can Improve Access and Quality of Care for Children With Medical Complexity. *J Pediatr Health Care* 2015;29(5):478-83.

24. Adams S, Mahant, S, Cohen, E. Comprehensive care for medically complex children: The pediatric nurse practitioner - pediatric hospitalist model of collaborative care. *Hospital Pediatrics* 2009:: Winter: pp 20-22.

25. Hussey MA, Hughes, J.P. Design and analysis of stepped wedge cluster randomized trials. *Contemporary clinical trials* 2007;28(2):182-91. doi: 10.1016/j.cct.2006.05.007 [published Online First: 2006/07/11]

26. Brown CA, Lilford RJ. The stepped wedge trial design: a systematic review. *BMC medical research methodology* 2006;6:54. doi: 10.1186/1471-2288-6-54 [published Online First: 2006/11/10]

27. Provincial Council for Mental and Child Health. CCKO Standard Operational Definition CMC-MFTD 2015 [Available from: [http://www.pcmch.on.ca/resource/ccko-operational-definition/pcmch-standard-operational-definition-cmc-mftd\\_ac-edits-v2-2/](http://www.pcmch.on.ca/resource/ccko-operational-definition/pcmch-standard-operational-definition-cmc-mftd_ac-edits-v2-2/) accessed 2018-09-04.

28. Mangione-Smith R. Personal Communication. 2016

29. McDonald KM SV, Bravata DM, Lewis R, Lin N, Kraft S, McKinnon M, Paguntalan H, Owens DK. Closing the Quality Gap: A Critical Analysis of Quality Improvement Strategies. . Rockville, MD: Stanford University-UCSF Evidence-based Practice Center June 2007.

30. Provincial Council for Maternal and Child Health. Complex Care for Kids Ontario  
[Available from: <http://www.pcmch.on.ca/health-care-providers/paediatric-care/complex-care-kids-ontario/>.]
31. Fayed N, Gardecki, M., Cohen, E. Partnering with families of children with medical complexity to evaluate interventions. *Canadian Medical Association Journal* 2018;190(Suppl):S24-S25.
32. Fayed N GM, Cohen E, Orkin J, Major N, Lim A, Morretti M, Guttman A, Aidarus N. Partnering with families of children with medical complexity to evaluate interventions. *Canadian Medical Association Journal* Accepted August 2018
33. Mangione-Smith R. Family Experiences with Care Coordination measure set (FECC). 2015
34. World Health Organization. Constitution of WHO: principles. 2016
35. Ravens-Sieberer U, Gosch A, Rajmil L, et al. KIDSCREEN-52 quality-of-life measure for children and adolescents. *Expert review of pharmacoeconomics & outcomes research* 2005;5(3):353-64. doi: 10.1586/14737167.5.3.353 [published Online First: 2005/06/01]
36. Fayed N, de Camargo OK, Kerr E, et al. Generic patient-reported outcomes in child health research: a review of conceptual content using World Health Organization definitions. *Developmental medicine and child neurology* 2012;54(12):1085-95. doi: 10.1111/j.1469-8749.2012.04393.x [published Online First: 2012/08/24]
37. Brand K CC. Pain assessment in children. *Anaesthesia & Intensive Care Medicine* 2010;11(6):214-6.



38. McGrath PA. An assessment of children's pain: a review of behavioral, physiological and direct scaling techniques. *Pain* 1987;31(2):147-76. [published Online First: 1987/11/01]

39. Diener E. Subjective well-being. The science of happiness and a proposal for a national index. *The American psychologist* 2000;55(1):34-43. [published Online First: 2001/06/08]

40. Diener E, Emmons RA, Larsen RJ, et al. The Satisfaction With Life Scale. *Journal of personality assessment* 1985;49(1):71-5. doi: 10.1207/s15327752jpa4901\_13 [published Online First: 1985/02/01]

41. Cella D, Yount S, Rothrock N, et al. The Patient-Reported Outcomes Measurement Information System (PROMIS): progress of an NIH Roadmap cooperative group during its first two years. *Medical care* 2007;45(5 Suppl 1):S3-s11. doi: 10.1097/01.mlr.0000258615.42478.55 [published Online First: 2007/04/20]

42. Lai JS, Stucky BD, Thissen D, et al. Development and psychometric properties of the PROMIS((R)) pediatric fatigue item banks. *Quality of life research : an international journal of quality of life aspects of treatment, care and rehabilitation* 2013;22(9):2417-27. doi: 10.1007/s11136-013-0357-1 [published Online First: 2013/02/05]

43. Jaeschke R, Singer J, Guyatt GH. Measurement of health status. Ascertaining the minimal clinically important difference. *Controlled clinical trials* 1989;10(4):407-15. [published Online First: 1989/12/01]

44. Harris PA, Taylor R, Thielke R, et al. Research electronic data capture (REDCap)--a metadata-driven methodology and workflow process for providing translational

- research informatics support. *Journal of biomedical informatics* 2009;42(2):377-81.  
doi: 10.1016/j.jbi.2008.08.010 [published Online First: 2008/10/22]
45. Cohen E, Berry JG, Sanders L, et al. Status Complexicus? The Emergence of  
Pediatric Complex Care. *Pediatrics* 2018;141(Suppl 3):S202-s11. doi:  
10.1542/peds.2017-1284E [published Online First: 2018/03/03]
46. Lion KC, Mangione-Smith, R., Britto, M. T. Individualized plans of care to improve  
outcomes among children and adults with chronic illness: a systematic review. *Care  
management journals : Journal of case management ; The journal of long term home  
health care* 2014;15(1):11-25. [published Online First: 2014/04/26]
47. Hochman M AS. Disruptive Models in Primary Care: Caring for High-Needs, High-  
Cost Populations. *J Gen Intern Med* 2017;32(4):392-97.
48. Barnert ES CR, Nelson BB, Thompson LR, Chan V, Padilla C, Klitzner TS, Szilagyi  
M, Chung PJ. Experts' Perspectives toward a Population Health Approach for  
Children with Medical Complexity. *Acad Pediatr* 2017;17(6):672-77.
49. Provincial Council for Maternal and Child Health. [http://www.pcmch.on.ca/health-  
care-providers/paediatric-care/complex-care-kids-ontario/strategic-framework/](http://www.pcmch.on.ca/health-care-providers/paediatric-care/complex-care-kids-ontario/strategic-framework/) 2018  
[accessed 2018-11-15].



CONSORT 2010 checklist of information to include when reporting a randomised trial\*

Section/Topic	Item No	Checklist item	Reported on page No
Title and abstract			
	1a	Identification as a randomised trial in the title	Page 1
	1b	Structured summary of trial design, methods, results, and conclusions (for specific guidance see CONSORT for abstracts)	Pages 2-3
Introduction			
Background and objectives	2a	Scientific background and explanation of rationale	Pages 5-6
	2b	Specific objectives or hypotheses	Page 6
Methods			
Trial design	3a	Description of trial design (such as parallel, factorial) including allocation ratio	Pages 6-7
	3b	Important changes to methods after trial commencement (such as eligibility criteria), with reasons	N/A
Participants	4a	Eligibility criteria for participants	Pages 8-9
	4b	Settings and locations where the data were collected	Page 8
Interventions	5	The interventions for each group with sufficient details to allow replication, including how and when they were actually administered	Pages 9-10
Outcomes	6a	Completely defined pre-specified primary and secondary outcome measures, including how and when they were assessed	Pages 10-13
	6b	Any changes to trial outcomes after the trial commenced, with reasons	N/A
Sample size	7a	How sample size was determined	Pages 13-14
	7b	When applicable, explanation of any interim analyses and stopping guidelines	N/A
Randomisation:			
Sequence generation	8a	Method used to generate the random allocation sequence	Pages 14-15
	8b	Type of randomisation; details of any restriction (such as blocking and block size)	Pages 14-15
Allocation concealment mechanism	9	Mechanism used to implement the random allocation sequence (such as sequentially numbered containers), describing any steps taken to conceal the sequence until interventions were assigned	Pages 14-15
Implementation	10	Who generated the random allocation sequence, who enrolled participants, and who assigned participants to interventions	Pages 14-15

1	Blinding	11a	If done, who was blinded after assignment to interventions (for example, participants, care providers, those assessing outcomes) and how	Pages 14-15
2		11b	If relevant, description of the similarity of interventions	N/A
3	Statistical methods	12a	Statistical methods used to compare groups for primary and secondary outcomes	Pages 16-17
4		12b	Methods for additional analyses, such as subgroup analyses and adjusted analyses	Pages 16-17
5				
6	<b>Results</b>			
7	Participant flow (a diagram is strongly recommended)	13a	For each group, the numbers of participants who were randomly assigned, received intended treatment, and were analysed for the primary outcome	N/A – protocol paper
8		13b	For each group, losses and exclusions after randomisation, together with reasons	N/A – protocol paper
9	Recruitment	14a	Dates defining the periods of recruitment and follow-up	N/A – protocol paper
10		14b	Why the trial ended or was stopped	N/A – protocol paper
11	Baseline data	15	A table showing baseline demographic and clinical characteristics for each group	N/A – protocol paper
12	Numbers analysed	16	For each group, number of participants (denominator) included in each analysis and whether the analysis was by original assigned groups	N/A – protocol paper
13	Outcomes and estimation	17a	For each primary and secondary outcome, results for each group, and the estimated effect size and its precision (such as 95% confidence interval)	N/A – protocol paper
14		17b	For binary outcomes, presentation of both absolute and relative effect sizes is recommended	N/A – protocol paper
15	Ancillary analyses	18	Results of any other analyses performed, including subgroup analyses and adjusted analyses, distinguishing pre-specified from exploratory	N/A – protocol paper
16	Harms	19	All important harms or unintended effects in each group (for specific guidance see CONSORT for harms)	N/A – protocol paper
17				
18	<b>Discussion</b>			
19	Limitations	20	Trial limitations, addressing sources of potential bias, imprecision, and, if relevant, multiplicity of analyses	Pages 17-19
20	Generalisability	21	Generalisability (external validity, applicability) of the trial findings	Page 19
21	Interpretation	22	Interpretation consistent with results, balancing benefits and harms, and considering other relevant evidence	N/A – protocol paper
22				
23	<b>Other information</b>			

1	Registration	23	Registration number and name of trial registry	Page 21
2				Page 20
3	Protocol	24	Where the full trial protocol can be accessed, if available	
4				Page 21
5	Funding	25	Sources of funding and other support (such as supply of drugs), role of funders	
6				

7

8 \*We strongly recommend reading this statement in conjunction with the CONSORT 2010 Explanation and Elaboration for important clarifications on all the items. If relevant, we also

9 recommend reading CONSORT extensions for cluster randomised trials, non-inferiority and equivalence trials, non-pharmacological treatments, herbal interventions, and pragmatic trials.

10 Additional extensions are forthcoming; for those and for up to date references relevant to this checklist, see [www.consort-statement.org](http://www.consort-statement.org).

11

12

13

14

15

16

17

18

19

20

21

22

23

24

25

26

27

28

29

30

31

32

33

34

35

36

37

38

39

40

41

42

# BMJ Open

## Complex Care for Kids Ontario: Protocol for a mixed-methods randomized controlled trial of a population-level care coordination initiative for children with medical complexity

Journal:	<i>BMJ Open</i>
Manuscript ID	bmjopen-2018-028121.R1
Article Type:	Protocol
Date Submitted by the Author:	20-Mar-2019
Complete List of Authors:	<p>Orkin, Julia; The Hospital for Sick Children, Division of Pediatric Medicine; University of Toronto, Department of Pediatrics</p> <p>Chan, Carol ; The Hospital for Sick Children, Child Health Evaluative Sciences</p> <p>Fayed, Nora; Queen's University, School of Rehabilitation Therapy</p> <p>Lin, Jia Lu Lilian; University of Toronto Dalla Lana School of Public Health, Institute of Health Policy, Management and Evaluation</p> <p>Major, Nathalie; Children's Hospital of Eastern Ontario, Department of Paediatrics</p> <p>Lim, Audrey; Hamilton Health Sciences Center, McMaster University, Department of Pediatrics</p> <p>Peebles, Erin; Western University</p> <p>Moretti, Myla; The Hospital for Sick Children, University of Toronto, Clinical Trials Unit</p> <p>Soscia, Joanna; The Hospital for Sick Children, Division of Pediatric Medicine</p> <p>Sultan, Roxana; The Hospital for Sick Children, The Provincial Council for Maternal &amp; Child Health</p> <p>Willan, Andrew; The Hospital for Sick Children, Clinical Trials Unit-Ontario Child Health Support Unit</p> <p>Offringa, Martin; The Hospital for Sick Children, Child Health Evaluation Sciences</p> <p>Guttmann, Astrid; Institute for Clinical Evaluative Sciences, ; The Hospital for Sick Children, Division of Pediatric Medicine</p> <p>Bartlett, Leah; Royal Victoria Regional Health Centre</p> <p>Kanani, Ronik; North York General Hospital, University of Toronto, Pediatrics</p> <p>Culbert, Erin; Trillium Health Partners, The Credit Valley Hospital</p> <p>Hardy-Brown , Carolyn ; Peterborough Regional Health Centre</p> <p>Gordon, Michelle; Orillia Soldier's Memorial Hospital</p> <p>Perlmutter, Marty; Michael Garron Hospital</p> <p>Cohen, Eyal; The Hospital for Sick Children, Division of Pediatric Medicine ; University of Toronto, Department of Pediatrics</p>
<b>Primary Subject Heading</b>:	Paediatrics
Secondary Subject Heading:	Health services research, Research methods

1  
2  
3  
4  
5  
6  
7  
8  
9  
10  
11  
12  
13  
14  
15  
16  
17  
18  
19  
20  
21  
22  
23  
24  
25  
26  
27  
28  
29  
30  
31  
32  
33  
34  
35  
36  
37  
38  
39  
40  
41  
42  
43  
44  
45  
46  
47  
48  
49  
50  
51  
52  
53  
54  
55  
56  
57  
58  
59  
60

Keywords:	complex care, medical complexity, health services, children, randomized controlled trial, parents



# Complex Care for Kids Ontario: Protocol for a mixed-methods randomized controlled trial of a population-level care coordination initiative for children with medical complexity

**Authors:** Julia Orkin<sup>1,2,3</sup>, Carol Y Chan<sup>3</sup>, Nora Fayed<sup>4</sup>, Jia Lu Lilian Lin<sup>5</sup>, Nathalie Major<sup>6</sup>, Audrey Lim<sup>7</sup>, Erin Peebles<sup>8</sup>, Myla E Moretti<sup>5,9</sup>, Joanna Soscia<sup>1</sup>, Roxana Sultan<sup>10</sup>, Andrew R Willan<sup>9</sup>, Martin Offringa<sup>2,3</sup>, Astrid Guttmann<sup>1,2,3,5,17</sup>, Leah Bartlett<sup>11</sup>, Ronik Kanani<sup>12</sup>, Erin Culbert<sup>13</sup>, Karolyn Hardy-Brown<sup>14</sup>, Michelle Gordon<sup>15</sup>, Marty Perlmutter<sup>16</sup>, and Eyal Cohen<sup>1,2,3,5,17</sup>

**Author Affiliations:** <sup>1</sup>Division of Pediatric Medicine, The Hospital for Sick Children, Toronto, Ontario, Canada, <sup>2</sup>Department of Pediatrics, University of Toronto, Toronto, Ontario, Canada, <sup>3</sup>Child Health Evaluative Sciences, The Hospital for Sick Children, Toronto, Ontario, Canada, <sup>4</sup>School of Rehabilitation Therapy, Queen's University, Kingston, Ontario, Canada, <sup>5</sup>Institute of Health Policy, Management and Evaluation, Dalla Lana School of Public Health, University of Toronto, Toronto, Ontario, Canada, <sup>6</sup>Department of Paediatrics, Children's Hospital of Eastern Ontario, University of Ottawa, Ottawa, Ontario, Canada, <sup>7</sup>Department of Pediatrics, Hamilton Health Sciences Centre, McMaster University, Hamilton, Ontario, Canada, <sup>8</sup>Western University, London, Ontario, Canada, <sup>9</sup>Clinical Trials Unit-Ontario Child Health Support Unit, The Hospital for Sick Children, Toronto, Ontario, Canada, <sup>10</sup>The Provincial Council for Maternal & Child Health, The Hospital for Sick Children, Toronto, Ontario, Canada, <sup>11</sup>Royal Victoria Regional Health Centre, Barrie, Ontario, Canada, <sup>12</sup>North York General Hospital, Toronto, Ontario, Canada, <sup>13</sup>Trillium Health Partners, The Credit Valley Hospital, Mississauga, Ontario, Canada, <sup>14</sup>Peterborough Regional Health Centre, Peterborough, Ontario, Canada, <sup>15</sup>Orillia Soldier's Memorial Hospital, Orillia, Ontario, Canada, <sup>16</sup>Michael Garron Hospital, Toronto, Ontario, Canada, <sup>17</sup>Institute for Clinical Evaluative Sciences, Toronto, Ontario, Canada

**Keywords:** Complex Care, medical complexity, health services, coordination, children, parents, randomized controlled trial

## Abbreviations:

CCKO: Complex Care for Kids Ontario

CMC: children with medical complexity

FECC: Family Experiences with Coordination of Care

KT: knowledge translation

MFTD: Medically Fragile and/or Technology Dependent

PCMCH: The Provincial Council for Maternal & Child Health

**Correspondence:** Dr. Julia Orkin, The Hospital for Sick Children, 555 University Avenue, Toronto, Ontario, Canada, M5G 1X8, Email: [julia.orkin@sickkids.ca](mailto:julia.orkin@sickkids.ca) Telephone: 416-813-7654 ext 201150

**Word Count (abstract):** 300 words

**Word Count (text):** 4,109 words without figures, tables, and appendices



1

2

3

4

5

6

7

8

9

10

11

12

13

14

15

16

17

18

19

20

21

22

23

24

25

26

27

28

29

30

31

32

33

34

35

36

37

38

39

40

41

42

43

44

45

46

47

48

49

50

51

52

53

54

55

56

57

58

59

60

**ABSTRACT**

**Introduction:** Technological and medical advances have led to a growing population of children with medical complexity (CMC) defined by substantial medical needs, healthcare utilization, and morbidity. These children are at a high risk of missed, fragmented and/or inappropriate care, and families bear extraordinary financial burden and stress. While small in number (<1% of children), this group uses approximately 1/3 of all child healthcare resources, and need coordinated care to optimize their health. Complex Care for Kids Ontario (CCKO) brings researchers, families, and healthcare providers together to develop, implement and evaluate a population-level roll-out of care for CMC in Ontario, Canada through a randomized controlled trial design. The intervention includes dedicated key workers and the utilization of coordinated shared care plans.

**Methods and analysis:** Our primary objective is to evaluate the CCKO intervention using a randomized waitlist control design. The waitlist approach involves rolling out an intervention over time, whereby all participants are randomized into two groups (A and B) to receive the intervention at different time points determined at random. Baseline measurements are collected at month 0, and Groups A and B are compared at months 6 and 12. The primary outcome is the Family Experiences with Coordination of Care (FECC) survey at 12 months. The FECC will be compared between groups using an analysis of covariance with the corresponding baseline score as the covariate. Secondary outcomes include reports of child and parent health outcomes, health system utilization, and process outcomes.

**Ethics and Dissemination:** Research ethics approval has been obtained for this multicentre randomized controlled trial. This trial will assess the effect of a large population-level complex

care intervention to determine whether dedicated key workers and coordinated care plans have an impact on improving service delivery and quality of life for CMC and their families.

**Registration:** ClinicalTrials.Gov identifier: NCT02928757

For peer review only

ARTICLE SUMMARY

Strengths and limitations of this study:

- This is the first large population-level implementation and mixed methods evaluation assessing the effectiveness of a complex care program for children with medical complexity (Complex Care for Kids Ontario (CCKO)).
- The study cohort represents a diverse sample of complex care patients across Ontario and the utilization of broad outcomes that encompass multiple potential targets of care with parent co-development in terms of the selection of outcome measures used.
- A limitation of this study relates to the challenge of the patient population as many are too unwell to be safely randomized to a waitlist design and therefore are excluded from the study. However, we will be able to use routinely collected health administrative data to describe health care utilization as a single outcome for this population as to not lose the significance of their data.

## INTRODUCTION

Medical advances have led to improved survival for many previously life-threatening conditions of childhood, such as prematurity[1], congenital anomalies[2], and congenital or acquired brain injury[3]. Technologic advances such as ventilator support, feeding tubes and transplantation have successfully prolonged the lives of children with lung, gut and other organ failure. This epidemiologic transition[4] has created a burgeoning population of children with medical complexity (CMC) – children with new morbidities, which are caused by longer survival itself as well as the complications of their life-sustaining therapies and created a new population that requires specialized care delivery to meet their complex healthcare needs.

CMC have been defined as “children with chronic conditions with elevated service needs, functional limitations and high healthcare utilization”[5]. Data from Ontario, Canada suggests that while CMC account for approximately 0.7% of all children, they use about one-third of all child health resources [6]. Studies from the United States have also reported that CMC account for 43% of child deaths, 49% of hospital days, and 75-92% of consumed assistive health technology[7, 8]. CMC and their parental caregivers endure enormous challenges, including: multiple and prolonged hospitalizations[9], frequent medical errors[10], poor care coordination[9, 11], and extraordinary stress[12]. The consequences may include poor caregiver health[13], marital strain[14], and profound negative financial impact[15].

Previous research has shown through a series of before- and after- studies, that targeted and integrated Complex Care interventions, most commonly within structured clinical program, may improve the health outcomes of CMC[16], including reducing the burden of caregiving[17], and mitigating costly and unnecessary healthcare expenditures[18, 19]. Other studies have shown

1  
2  
3 additional benefits such as: a decreased need for medical information and improved  
4  
5 satisfaction[20], improved family perceptions of their providers, their overall health care  
6  
7 experience, and provider communication[21], as well as decreased unplanned healthcare  
8  
9 visits[22]. However, the validity of these findings has been limited by small sample sizes, lack of  
10  
11 control groups and incomplete outcome measures[23]. Published randomized controlled trials  
12  
13 (RCTs) report improved parental satisfaction with care, but mixed results for other outcomes.  
14  
15 One parallel-group RCT described a decrease in both rates of severe illness and health care  
16  
17 costs[24] among children enrolled in a structured Complex Care program, while another cluster  
18  
19 RCT reported increased costs with no change in functional status or hospital-based  
20  
21 utilization[25].  
22  
23  
24  
25  
26  
27

28 The Provincial Council of Maternal and Child Health (PCMCH) is a provincial organization,  
29  
30 supported by Ontario’s public single-payer of healthcare (the Ministry of Health and Long-Term  
31  
32 Care). PCMCH implemented Complex Care Kids Ontario (CCKO), a population-health strategy  
33  
34 to improve care for CMC by providing an integrated approach to medical care and coordination.  
35  
36 The strategy aims to improve service delivery, health, and quality of life of the patient-families  
37  
38 involved through care coordination across acute and primary care, rehabilitation, home and  
39  
40 community care, facilitated by dedicated nurse practitioners[26, 27], who function as key  
41  
42 workers to establish seamless integrated care through the development and maintenance of a  
43  
44 single, comprehensive and collaborative care plan that is designed to meet the child’s/family’s  
45  
46 goals and optimize health outcomes (see Appendix 1). The aim of this study is to compare the  
47  
48 effectiveness of the CCKO intervention to usual care for CMC in Ontario.  
49  
50  
51  
52  
53  
54  
55  
56  
57  
58  
59  
60

## METHODS/DESIGN

### Design

CCKO will utilize a waitlist variation of a randomized controlled trial design (Figure 1). The waitlist approach involves rolling out an intervention over time, whereby all participants are randomized into two groups (A and B) to receive the intervention at different time points determined at random[25, 28]. Group A receives the intervention at the next available appointment. Group B is placed on a waitlist and receives the intervention after 12 months. This study design uses the time period before the intervention as the control period/baseline, to be compared to those receiving the intervention[29]. Baseline measurements would be collected at month 0, and Groups A and B would be compared at months 6 and 12.

The waitlist design is used in scenarios where it is considered unethical to withhold an intervention with likely benefits, or if there are logistical or financial constraints that prevent the intervention from being administered in whole at one time point[28, 29]. This design generates robust evidence of an intervention program's effectiveness by leveraging real-world operational need for a staggered roll out. For CCKO, it is logistically not feasible for all eligible children to be seen immediately. For example, the initial intake process for key workers is time-intense, requiring the creation of careplans and the development of a patient-provider relationship. A staggered roll out facilitates work-flow, allowing program implementation within the context of human resource limitations. With the exception of patients for whom care coordination is thought to be urgently required (see exclusion criteria a)-c)), all patients referred to CCKO will be randomly assigned to either receive the intervention immediately or after the waitlist period (12 months). This approach minimizes the risk of selection bias by retaining the design element of randomization.

1

2

3 **Setting**

4

5 CCKO will be led by four tertiary care children’s hospitals with partnership at multiple

6

7 community led clinics (see Appendix 2). These sites display broad geographical representation

8

9 of patients.

10

11

12

13

14

15 **Participants**

16

17 The target population includes children in Ontario who satisfy the Standard Operational

18

19 definition for CMC developed by PCMCH[30]. The inclusion criteria are summarized in Figure

20

21 2. The criteria adapt existing definitions of CMC[5] to a slightly narrower group with technology

22

23 dependence and/or medical fragility to focus on those patients who are most expected to benefit

24

25 from care coordination such as those thought to be at risk of avoidable hospitalizations.

26

27

28 *Exclusion Criteria*

29

- 30
- 31 a) High utilization of hospital level care
- 32
- 33     ○  $\geq 3$  hospitalizations,  $\geq 2$  ICU (intensive care unit) admissions,  $\geq 30$  days of total
- 34
- 35         hospitalization in previous 3 months, excluding newborn admission
- 36
- 37
- 38 b) Tracheostomy and home ventilation
- 39
- 40 c) Medical status is deemed highly fragile and the need for close follow-up is essential by
- 41
- 42     both referring and triaging team
- 43
- 44
- 45 d) Already followed by a complex care team
- 46
- 47 e)  $>16.0$  years of age
- 48
- 49 f) Inadequate English proficiency to comprehend study questionnaires
- 50
- 51
- 52 g) Parent will not be involved in child’s care over entirety of study (2 years)
- 53
- 54
- 55
- 56
- 57
- 58
- 59
- 60

Patients who satisfy exclusion criteria a)-c) are deemed to urgently require care coordination; as such, it would be unethical to randomize these patients to a waitlist. Patients who satisfy exclusion criteria d) would have experienced the potential benefits of care coordination already. Patients who satisfy exclusion criteria e) would be in the process of being transitioned to adult care. Patients who satisfy exclusion criteria f) would not be able to complete the study questionnaires as the majority are only validated in English. Patients who satisfy exclusion criteria g) would not be able to complete the study questionnaires at all time points as these children are placed in out of home care during the study period (social history is provided to the triaging team in each referral). Patients whose caregivers cannot complete questionnaires in English will not be involved in the primary analysis however, they will be enrolled in CCKO and provide health care utilization data via health card linkages to health administrative data housed at the Institute for Clinical Evaluative Sciences that will be used in secondary analyses. Similarly, patients who require urgent care coordination are excluded from the study, but will be able to contribute data through similar linkages.

The CCKO intervention involves care coordination, defined as: “deliberate organization of patient care activities between two or more participants to facilitate the appropriate delivery of health care services. Organizing care involves the marshaling of personnel and other resources needed to carry out required care activities and is often managed by the exchange of information among participants responsible for different aspects of care”[31, 32]. Within CCKO, care coordination will include family/health care provider co-creation and management of care coordination plans which will be facilitated and accounted for by key workers partnering with



families. The key worker would have an advanced practice nursing (e.g., nurse practitioner) background and will support the development and enactment of the coordinated care plan between acute care, primary care, rehabilitation, home and community care. Further details about care plan development are available online[33]. The key worker would be available to provide advice from Monday to Friday, 9 AM – 5 PM, and will also develop plans of care for emergencies after hours as part of care plan development. Resources to maintain intervention fidelity among key workers will be maintained with oversight by PCMCH.

The waitlist group consists of CMC who are receiving care from primary and specialty providers, and are waitlisted for Complex Care clinic (pre-enrolment control period). Standard of care during the control period will involve care delivered through a primary care provider (family physician or pediatrician) for routine health care such as vaccination and acute care visits with subspecialty consultation as needed. Currently, this model of care for the vast majority of CMC in Ontario; among ~6,200 patients who are estimated to meet CCKO criteria in Ontario, only ~500 receive care in a structured complex care clinic. At the end of year 1, all CMC randomized to the waitlist will be enrolled in complex care and data will continue to be collected for 1 additional year on all participants in an extension phase.

Criteria for discontinuing study intervention: participants in the waitlisted arm that experience a change in clinical status and now meet exclusion criteria (e.g., prolonged hospital stay >30 days), will be taken out of the waitlist-arm and will be seen at the next available appointment.

## Patient and Public Involvement

A family-engagement strategy was conducted to identify and prioritize outcomes for evaluation. The core set of relevant patient reported outcome measures (PROMs) and patient reported experience measures (PREMs) was created in a consensus meeting using data collected from a survey completed by 48 families and 86 health care providers[34].

## Outcomes

Measures representing these outcomes were selected based on their content applicability to the outcomes, proven psychometric performance (reliability and validity) among children and families. The family-engagement evaluation framework includes general and specific outcomes within the domains of service delivery (primary outcomes); child outcomes (secondary) and parent outcomes (secondary).

### Primary Outcome:

1. *Coordination of Care Among Health Providers and Families*
2. *Coordination of Care Between Health Providers and Families*
3. *Utility of Follow-Up Planning Tools*

These outcomes will be assessed with the Family Experiences with Coordination of Care (FECC) survey, our primary outcome measure[35, 36]. The FECC has been validated in a study of 1209 CMC patient-families in the United States, and has internal consistency >0.7 with proven discriminant validity for patient-family socioeconomic status and rurality[37], as well as responsiveness to change demonstrated in a recent CMC longitudinal cohort study[31].

### Child-focused (Secondary) Outcomes:

1. *Quality of Life and Overall Emotional Health* (see Table 1)

2. *Child’s Physical Pain*

Children’s quality of life and emotional wellbeing will be measured using the World Health Organization definition focused on subjective life appraisal[38]and a positive orientation of mood assessment respectively. These outcomes will be assessed using the Feelings subscale from the KIDSCREEN-52 (6 items), used in over 250 studies in the child health services literature since its publication in 2005[39, 40]; and represents the most suitable content overlap with CMC. Children’s physical pain will be measured using proxy reports of pain according to a 10 cm linear Visual Analog Scale (VAS)[41] . Linear VAS is considered superior to other pain reports available for children due to consistencies of interpretation within parent-child dyads, test-retest reliability and measurement precision[42], and is most appropriate for the diverse functional ability of CMC.

**Table 1. Overview of outcomes & associated measures**

Service Delivery Outcomes (Measurement Tool)	Parent Outcomes (Measurement Tool)	Child Outcomes (Measurement Tool)	System Outcomes (Measurement Tool)	Process Outcomes (Measurement Tool)
Coordination Among Providers (Family Experiences with Care. Coordination)	Life Satisfaction (KIDSCREEN, Satisfaction with Life Scale)	Life Satisfaction (KIDSCREEN)	Health Utilization e.g. Hospital admissions, ER visits, etc. (available for all Ontario residents in linked administrative databases housed at the Institute for Clinical Evaluative Sciences – see Appendix 4 for list of databases)	Patient and family experience (Qualitative Interviews)
Coordination Between Providers and Families (Family Experiences with Care Coordination)	Overall Health (Patient-Reported Outcomes Measurement Information System)	Physical Pain (Visual Analog Scale)		
Utility of Planning/Follow-Up Tools (Family Experiences with Care Coordination)	Energy and Fatigue (Patient-Reported Outcomes Measurement Information System)			
Patient Centered Information (Family Experiences with Care Coordination)	Out of Pocket Expenses (Expense Diary – see Appendix 3)			
Parental Support in the Community (Family Experiences with Care Coordination)				

Parent-focused (Secondary) Outcomes:

1. *Parents’ Quality of Life*
2. *Perceived Emotional and Physical Health*
3. *Energy and Fatigue*
4. *Effects of Child’s Condition on Parents’ Finances and Ability to Work*

Parents’ quality of life will be measured by a subjective life appraisal definition with two scales. (1) Diener’s Satisfaction with Life Scale (SWLS) (5 items) which is the most validated life satisfaction scale for adults in the health and social sciences literature[43, 44] and (2) an adapted KIDSCREEN Feelings subscale, which will allow for direct comparisons of child versus parent life satisfaction[39]. Parents’ perceived health, energy, and fatigue will be assessed with short forms of the Patient Reported Outcomes Measurement Information System (PROMIS) General Health (10 items); Sleep (8 items); and Fatigue (8 items) scales. These scales have been validated, have norm references data for comparison and have shown good to excellent psychometric properties among caregivers[45, 46]. Financial impact on parents’ will be measured using an Expense Diary survey created by the study team. This survey will capture financial impact based on lost time and ability to work, as well as out of pocket expenses for health care services, equipment, and travel using scales customized for CMC and standardized relative to various child health studies with the support of the study health economist (Moretti; see Appendix 3).

Health System (Secondary) Outcomes:

A cost-effectiveness analysis will be performed to estimate the incremental costs (or savings) of the CCKO initiative compared to standard care in reducing hospitalization. Both a health care

system and societal perspective will be used with a time horizon of 12 months. Cost-effectiveness will be expressed as an incremental cost-effectiveness ratio (ICER), calculated by dividing the incremental costs of the intervention by the incremental difference in hospitalizations during the study period. Direct health care costs will include cost of the CCKO intervention and health services use by participants during the 12 month period. Indirect costs include caregiver lost productivity measured by participant survey. Health services use by participants will be obtained by linkage to administrative data housed at the Institute for Clinical Evaluative Sciences (ICES) for consenting participants (see Appendix 4 for list of datasets). ICES is a not-for-profit research institute listed in Ontario's health privacy legislation as a Prescribed Entity allowing the use of health data on all Ontario residents for the purposes of research. These datasets will be linked using unique encoded identifiers and analyzed at ICES. Additional health services use covered by third-party payers and parent out-of-pocket expenses will be obtained through surveys.

### Sample Size

We determine the sample size to be 140 (70/arm) based on the following criteria: i) Two-sided test of the null hypothesis at the 5% level; ii) Power of 80%; iii) 10% lost-to-follow-up; projected smallest clinically important difference of 0.5 of the within-patient standard deviation[47]. The within-patient standard deviation is needed to obtain a baseline measure from the waitlisted group as reference. The standard deviation of the primary outcome, FECC=0.56 is based on pooled data from the developer's CMC validation sample[37]. The required sample size is considered feasible as it is estimated that a pool of about 250 patients are readily identifiable for recruitment at CCKO sites.

**Recruitment**

At each site, clinical staff will refer eligible patients to CCKO.. The triaging team will use the inclusion and exclusion criteria to determine eligibility for CCKO and suitability for the research study. A study information letter will be sent to the families of eligible patients who will subsequently be contacted by the research assistant by telephone. The research assistant will explain the research study to the families and obtain informed consent. An approximate 50% recruitment rate from a pool of N=400 (200/year) is conservatively estimated based on previous recruitment and current waitlists.

Questionnaires would take place at baseline, 6, 12, and 24 months. Upon completion of each time point, families will receive a \$20 gift card to a drug store. A subsample of approximately 10-15 parents in the intervention arm will be approached 12 months for qualitative interviewing to explore their experience with the intervention.

**Randomization**

CCKO randomization will be done using a computer-generated algorithm stratified by centre. Blocking will be used to ensure that the two groups are the same size throughout the trial for each site as well as for the trial as a whole. An allocation ratio of 1:1 with random block sizes between 6 and 8 will be used within each stratum (centre). This will help to ensure that clinicians or investigators will not decipher the block size.

**Data Collection**

Upon obtaining consent, the Research Assistant will assign a research subject ID number to patients. Study data will be collected and managed using REDCap (Research Electronic Data Capture)[48]. Patient-families can opt to complete data collection by iPads or hardcopy. At home, patient-families can complete surveys via REDCap. This flexible methods of data collection will maximize diversity of respondents ideally as well as support family needs and preferences for data collection. A demographics survey will be administered at baseline (see Appendix 5 for demographic questions).

### **Data Management**

A REDCap study database will be designed and maintained by the Research Coordinator at The Hospital for Sick Children. The data on the various forms will be linked by a unique research subject ID. The Research Coordinator will extract study data from questionnaires via the REDCap interface to complete the study-specific data collection forms. An external user interface will also be created on REDCap for parents who opt to complete the surveys online. All personal identifying information will be removed from the electronic study database. A separate secure list of research subjects' names and contact information will be maintained in a Microsoft Excel spreadsheet for the purpose of completing the follow-up questionnaires. All study-related electronic data files will be password-protected and reside on the Hospital server. Only members of the research team will have access to the server study file location via password-protected computers. Password-protected databases from each site will be transferred to the IC/ES through a Virtual Private Network.

### **Statistical analysis**



An overview of outcomes are presented in **Table 1**.

*Patient and Caregiver Characteristics*

Baseline patient characteristics and descriptive variables will be presented for each arm: age, sex, diagnosis, ethnicity, medications, medical devices and hospitalizations (see Appendix 6 for baseline clinical information form). Baseline caregiver characteristics and descriptive variables will be presented as well: age, sex, education level, employment status, ethnicity, primary language. For continuous variables, means and standard deviations or medians (interquartile ranges) will be presented. For categorical variables, proportions will be presented.

*Primary Outcome*

The primary analysis will be a comparison of service delivery outcomes (i.e., FECC) between the intervention and waitlist groups at 12 months. The principle of intention-to-treat will be applied. For effectiveness each outcome variable at Month 12 will be compared between groups using an analysis of covariance with the corresponding baseline score as the covariate. A two-sided, level 0.05 test of hypothesis will be applied.

*Secondary Outcomes*

Data collection at 0 and 6 months will be used to perform test-retest reliability, to establish baseline reference measures and to assess for stability of outcome changes (24 months). Secondary child-focused and parent-focused outcomes will be compared at 0, 6 and 12 months using Bonferroni corrections to account for multiple testing. All secondary health system outcomes will be compared between the intervention and control as well.

*Additional Analyses*

We will examine health system outcomes using regression modeling to explore the relationships between PROMs and health utilization patterns (for example, the relationship of out-of-pocket expenditures with availability of home health care services).

## DISCUSSION

While growing attention has been provided to CMC in recent years[49], there are important gaps in the literature regarding the optimal care delivery model for CMC [17-19, 23]. Before- and after- studies have shown possible benefit but there has been few rigorous randomized controlled trials conducted that look at multiple outcomes including service delivery, parent and child health outcomes as well as health system outcomes such as health utilization. Furthermore, this is the first study that prioritized outcomes as identified by patients and families directly in order to understand if a complex care program was successful in the eyes of a family by selecting outcomes that matter most to them. The care delivery model in CCKO - utilizing a key worker and comprehensive care plans - is a time intensive and possibly costly one. Well-designed evaluations are needed to examine how they relate to outcomes of care for this population[50]. Several aspects of this trial are important to highlight as innovative and novel.

First, in contrast to other trials that target CMC within a single health care setting (e.g., a children's hospital), this study focuses on population-level implementation and evaluation in Ontario, Canada's most populous province. This setting allows the implementation of complex care coordination within a wide geographic area combining both densely populated urban areas with more rural locations for which travel to specialized care is challenging. The large number of sites participating in this study account for the majority of CMC care in Ontario. This

environment is unique in terms of the current literature as these patients reflect population-level CMC representation, with outcome data availability across the continuum of care available from a large provincial repository of data. The focus on many sites creates some challenges in both implementation and evaluation across diverse settings. However, this evaluation also provides an opportunity for the development of generalizable knowledge not only for publically-funded healthcare delivery systems, but also for broad groups of payers focused on other high-need/high-cost populations[51].

Second, the outcome measures used are patient and family-informed. Previous literature has highlighted the need for uniquely developed outcome measures for CMC recognizing the nature of their health care usage and trajectory. Before recruitment began, the outcome measures were determined through a process of direct consultation with parents of CMC[52]. Previous evaluations of CMC care have relied primarily upon readily available data (e.g. claims data or other administrative datasets), with minimal patient- and family-reported input. Previous patient-reported outcome measures utilized in evaluations have not been validated in a CMC population. A strength of this study is the utilization of broad outcomes that encompass multiple potential targets of care. We chose care coordination as the primary outcome measure because it is the primary target for change as in this patient population and the measurement instrument has been validated in CMC. Unfortunately, expectation of a change in disease status is not meaningful or realistic in many CMC, whereas improved navigation of the healthcare system is an important and improvable target of care. Biomedical endpoints, although important, are not meaningful in such a heterogeneous population.

Third, the study has been designed to mitigate risk of bias. It is anticipated that some patients may be excluded; a concern are those who are marginalized (e.g., non-English speaking), or are deemed too urgent to enroll in a waitlist. We aim to conduct a secondary study focused on comparing such patients to contemporaneous controls using administrative data to ensure knowledge generation about the impact of CCKO in this group as well, albeit with a higher risk of bias that would otherwise be attenuated with randomization (e.g., unmeasured confounders). Fourth, the focus of this study is not solely quantitative in nature. We have elicited a mixed methods approach. We will conduct interviews with a subset of intervention arm parents to capture their experience with the intervention, areas of improvement, as well as perceived benefits and harms. This approach will identify what aspects of the CCKO intervention are more or less effective, for whom, in what context and why. Lastly, the integrated knowledge translation is unique in that the direct provincial implementation of the CCKO roll out has been matched directly with the evaluation such that the knowledge end-user was a part of the study team from the outset. The integrated KT approach has included families caring for CMC, policy-makers and widely representative clinicians such as nurses and physicians. This large integrative model allows direct translation of results and seamless integration of knowledge.

## ETHICS AND DISSEMINATION

The protocol has been approved by Research Ethics Boards at all sites. The study Research Assistant will obtain informed consent from parental caregivers. Informed consent/assent will be obtained from all those who are able to provide it.

### Adverse Event Reporting

While there are no adverse events expected, any adverse events will be reported to the Research Ethics Board. All adverse events and adverse reactions will also be reported to the Primary Investigator within 24 hours.

**Dissemination**

CCKO represents a fully integrated knowledge transfer and exchange paradigm. The research team have worked with patient-families and PCMCH to craft the provincial strategy, providing population-based data to understand the target population (numbers/location of children, patterns of care, health system costs). The committees overseeing implementation and evaluation encompass key knowledge users (patients, families, clinicians, administrators, policy-makers), allowing for seamless KT. Executive Summaries and/or Presentations will be shared for wide dissemination to a variety of organizations/collaboratives. Academic KT will occur through presentation at academic conferences and publications in high-impact, peer-reviewed journals. At study end, results will be available on CCKO’s website.

**TRIAL STATUS**

Recruitment began January 2017 and there are 132 participants of a target of 140 as of February 2019. The study is on track to complete enrolment in 2019. A copy of the full-length protocol is available upon request.

## Figure Captions

**Figure 1:** Complex Care for Kids Ontario Evaluation Flow Chart for Referrals

**Figure 2:** Complex Care for Kids Ontario Inclusion Criteria

For peer review only

**Author Contributions** JO and EC designed the study and the other authors (CC, NF, JL, NM, AL, EP, MM, JS, RS, AW, MO, AG, LB, RK, EC, KHB, MG, and MP) collaborated in the design of the study. EC and AW provided statistical expertise. JO and CC prepared the initial draft of the manuscript and EC revised the manuscript. All authors read, provided feedback, discussed and approved the final manuscript. All authors gave approval for the manuscript to be submitted.

**Trial Registration** Trial registered at ClinicalTrials.Gov NCT02928757

**Funding** Canadian Institute of Health Research (Funding reference number: FDN-143315 and Ontario Strategy for Patient-Oriented Research Support Unit IMPACT (Innovative, Measurable, Patient-oriented, Appropriate, Collaborative and Transformative) Award

**Disclaimer** The funder did not have any role in the study design. This study was supported by IC\ES, which is funded by an annual grant from the Ontario Ministry of Health and Long-Term Care (MOHLTC). The opinions, results and conclusions reported in this paper are those of the authors and are independent from the funding sources. No endorsement by IC\ES or the Ontario MOHLTC is intended or should be inferred.

**Competing interests** None declared

**Patient consent** Not required

**Ethics approval** This study was approved by the local REB at: The Hospital for Sick Children (REB# 1000053509), Hamilton Health Sciences (project # 2017-2161), Children’s Hospital of Eastern Ontario (ROMEO# 20160299), London Health Sciences Center (project ID 108143), Michael Garron Hospital (REB# 702-1701-MNC-009), Credit Valley Hospital (ID# 855), North York General Hospital (REB# 16-0044), Royal Victoria Hospital (REB# 015), Orillia Soldiers’ Memorial Hospital, and Peterborough Regional Health Centre.

**Provenance and peer review** Not commissioned; externally peer reviewed.

## Data Availability Statement

Data are available upon reasonable request.

Individual participant data that underlie the results reported in this article, after deidentification, can be shared. The study protocol is also available upon request. The data will be available beginning 12 months and ending 24 months following article publication. The data can be shared with investigators whose proposed use of the data has been approved by an independent review committee identified for this purpose. Data can be requested for analyses that achieve aims in the aforementioned proposal. Proposals should be directed to the corresponding author Dr. Julia Orkin. To gain access, data requesters will need to sign a data access agreement.



References

1. Wilson-Costello D, Friedman H, Minich N, et al. Improved survival rates with increased neurodevelopmental disability for extremely low birth weight infants in the 1990s. *Pediatrics* 2005;115(4):997-1003. doi: 115/4/997 [pii]10.1542/peds.2004-0221 [published Online First: 2005/04/05]

2. Tennant PW, Pearce MS, Bythell M, et al. 20-year survival of children born with congenital anomalies: a population-based study. *Lancet* 2010;375(9715):649-56. doi: S0140-6736(09)61922-X [pii]10.1016/S0140-6736(09)61922-X [published Online First: 2010/01/23]

3. Plioplys AV. Survival rates of children with severe neurologic disabilities: a review. *Semin Pediatr Neurol* 2003;10(2):120-9. [published Online First: 2003/10/24]

4. Wise PH. The transformation of child health in the United States: social disparities in child health persist despite dramatic improvements in child health overall. *Health Affairs* 2004;23(5):9-25.

5. Cohen E, Kuo DZ, Agrawal R, et al. Children with medical complexity: an emerging population for clinical and research initiatives. *Pediatrics* 2011;127(3):529-38. doi: 10.1542/peds.2010-0910 [published Online First: 2011/02/23]

6. Cohen E, Berry JG, Camacho X, et al. Patterns and costs of health care use of children with medical complexity. *Pediatrics* 2012;130(6):e1463-70. doi: 10.1542/peds.2012-0175 [published Online First: 2012/11/28]

7. Simon TD, Berry J, Feudtner C, et al. Children with complex chronic conditions in inpatient hospital settings in the United States. *Pediatrics* 2010;126(4):647-55. doi: peds.2009-3266 [pii]10.1542/peds.2009-3266 [published Online First: 2010/09/22]

- 1  
2  
3 8. Berry JG, Hall M, Hall DE, et al. Inpatient growth and resource use in 28 children's  
4 hospitals: a longitudinal, multi-institutional study. *JAMA Pediatr* 2013;167(2):170-7.  
5  
6 doi: 10.1001/jamapediatrics.2013.432  
7  
8  
9
- 10 9. Dosa N, Boeing N, Ms N, et al. Excess risk of severe acute illness in children with  
11 chronic health conditions. . *Pediatrics* 2001;107(3):499-504.  
12  
13  
14
- 15 10. Slonim A, LaFleur B, Ahmed W, et al. Hospital-reported medical errors in children.  
16  
17 *Pediatrics* 2003;111(3):617-21.  
18
- 19 11. Matlow A, Wright J, Zimmerman B, et al. How can the principles of complexity  
20 science be applied to improve the coordination of care for complex pediatric patients?  
21  
22 *Qual Saf Health Care* 2006;15(2):85-8.  
23  
24  
25
- 26 12. Raina P, O'Donnell M, Rosenbaum P, et al. The health and well-being of caregivers  
27 of children with cerebral palsy. *Pediatrics* 2005;115(6):e626-36.  
28  
29  
30
- 31 13. Brehaut JC, Kohen DE, Garner RE, et al. Health among caregivers of children with  
32 health problems: findings from a Canadian population-based study. *Am J Public*  
33  
34 *Health* 2009;99(7):1254-62. doi: 10.2105/AJPH.2007.129817  
35  
36  
37
- 38 14. Sabbeth BF, Leventhal JM. Marital adjustment to chronic childhood illness: a critique  
39 of the literature. *Pediatrics* 1984;73(6):762-8. [published Online First: 1984/06/01]  
40  
41  
42
- 43 15. Ratliffe CE, Harrigan RC, Haley J, et al. Stress in families with medically fragile  
44 children. *Issues in Comprehensive Pediatric Nursing* 2002;25(3):167-88.  
45  
46
- 47 16. Cohen E, Friedman JN, Mahant S, et al. The impact of a complex care clinic in a  
48 children's hospital. *Child Care Health Dev* 2010;36(4):574-82. doi: CCH1069  
49  
50 [pii]10.1111/j.1365-2214.2009.01069.x [published Online First: 2010/03/27]  
51  
52  
53  
54  
55  
56  
57  
58  
59  
60

17. Cohen E, Lacombe-Duncan A, Spalding K, et al. Integrated complex care coordination for children with medical complexity: a mixed-methods evaluation of tertiary care-community collaboration. *BMC Health Serv Res* 2012;12:366. doi: 10.1186/1472-6963-12-366

18. Cohen E, Bruce-Barrett C, Kingsnorth S, et al. Integrated complex care model: lessons learned from inter-organizational partnership. *Healthcare quarterly* 2011;14 Spec No 3:64-70. [published Online First: 2012/01/04]

19. Berry JG, Hall M, Neff J, et al. Children with medical complexity and medicaid: spending and cost savings. *Health Aff (Millwood)* 2014;33(12):2199-206. doi: 10.1377/hlthaff.2014.0828

20. Farmer JE CM, Drewel EH, Swenson TM, Ge B. Consultative care coordination through the medical home for CSHCN: a randomized controlled trial. *Matern Child Health J* 2011;15(7):1110-18.

21. Looman WS AM, Cady RG, Lunos SA, Garwick AE, Finkelstein SM. Effects of a Telehealth Care Coordination Intervention on Perceptions of Health Care by Caregivers of Children With Medical Complexity: A Randomized Controlled Trial. *J Pediatr Health Care* 2015;29(4):352-63.

22. McKissick HD CR, Looman WS, Finkelstein SM. The Impact of Telehealth and Care Coordination on the Number and Type of Clinical Visits for Children With Medical Complexity. *J Pediatr Health Care* 2017;31(4):452-58.

23. Cohen E, Jovcevska V, Kuo DZ, et al. Hospital-based comprehensive care programs for children with special health care needs: a systematic review. *Archives of*

- pediatrics & adolescent medicine* 2011;165(6):554-61. doi:  
10.1001/archpediatrics.2011.74 [published Online First: 2011/06/08]
24. Mosquera RA, Avritscher EB, Samuels CL, et al. Effect of an enhanced medical home on serious illness and cost of care among high-risk children with chronic illness: a randomized clinical trial. *JAMA* 2014;312(24):2640-8. doi:  
10.1001/jama.2014.16419
25. Simon TD, Whitlock KB, Haaland W, et al. Effectiveness of a Comprehensive Case Management Service for Children With Medical Complexity. *Pediatrics* 2017;140(6) doi: 10.1542/peds.2017-1641 [published Online First: 2017/12/02]
26. Gresley-Jones T GP, Wade S, Gillespie R. Inspiring Change: How a Nurse Practitioner-Led Model of Care Can Improve Access and Quality of Care for Children With Medical Complexity. *J Pediatr Health Care* 2015;29(5):478-83.
27. Adams S, Mahant, S, Cohen, E. Comprehensive care for medically complex children: The pediatric nurse practitioner - pediatric hospitalist model of collaborative care. *Hospital Pediatrics* 2009:: Winter: pp 20-22.
28. Hussey MA, Hughes, J.P. Design and analysis of stepped wedge cluster randomized trials. *Contemporary clinical trials* 2007;28(2):182-91. doi:  
10.1016/j.cct.2006.05.007 [published Online First: 2006/07/11]
29. Brown CA, Lilford RJ. The stepped wedge trial design: a systematic review. *BMC medical research methodology* 2006;6:54. doi: 10.1186/1471-2288-6-54 [published Online First: 2006/11/10]
30. Provincial Council of Maternal and Child Health. CCKO Standard Operational Definition CMC-MFTD 2015 [Available from:

[http://www.pcmch.on.ca/resource/ccko-operational-definition/pcmch-standard-operational-definition-cmc-mftd\\_ac-edits-v2-2/](http://www.pcmch.on.ca/resource/ccko-operational-definition/pcmch-standard-operational-definition-cmc-mftd_ac-edits-v2-2/) accessed 2018-09-04.

31. Mangione-Smith R. Personal Communication. 2016

32. McDonald KM SV, Bravata DM, Lewis R, Lin N, Kraft S, McKinnon M, Paguntalan H, Owens DK. Closing the Quality Gap: A Critical Analysis of Quality Improvement Strategies. . Rockville, MD: Stanford University-UCSF Evidence-based Practice Center June 2007.

33. Provincial Council of Maternal and Child Health. Complex Care for Kids Ontario [Available from: <http://www.pcmch.on.ca/health-care-providers/paediatric-care/complex-care-kids-ontario/>].

34. Fayed N, Gardecki, M., Cohen, E. Partnering with families of children with medical complexity to evaluate interventions. *Canadian Medical Association Journal* 2018;190(Suppl):S24-S25.

35. Gidengil C PL, Burkhart Q, Brown J, Elliott MN, Lion KC, McGlynn EA, Schneider EC, Mangione-Smith R. Development and Implementation of the Family Experiences with Coordination of Care Survey Quality Measures. *Acad Pediatr* 2017;17(8):863-70. [published Online First: 2017 Mar 31]

36. Parast L BQ, Gidengil C, Schneider EC, Mangione-Smith R, Lion KC, McGlynn EA, Carle A, Britto MT, Elliott MN. Validation of New Care Coordination Quality Measures for Children with Medical Complexity. *Acad Pediatr* 2018;18(5):581-88. [published Online First: 2018 Mar 14.]

37. Mangione-Smith R. Family Experiences with Care Coordination measure set (FECC) 2015 [Available from: <https://www.seattlechildrens.org/research/centers->

[programs/child-health-behavior-and-development/labs/mangione-smith-lab/measurement-tools/](https://www.bmjopen.com/programs/child-health-behavior-and-development/labs/mangione-smith-lab/measurement-tools/)

38. World Health Organization. Constitution of WHO: principles. 2016
39. Ravens-Sieberer U, Gosch A, Rajmil L, et al. KIDSCREEN-52 quality-of-life measure for children and adolescents. *Expert review of pharmacoeconomics & outcomes research* 2005;5(3):353-64. doi: 10.1586/14737167.5.3.353 [published Online First: 2005/06/01]
40. Fayed N, de Camargo OK, Kerr E, et al. Generic patient-reported outcomes in child health research: a review of conceptual content using World Health Organization definitions. *Developmental medicine and child neurology* 2012;54(12):1085-95. doi: 10.1111/j.1469-8749.2012.04393.x [published Online First: 2012/08/24]
41. Brand K CC. Pain assessment in children. *Anaesthesia & Intensive Care Medicine* 2010;11(6):214-6.
42. McGrath PA. An assessment of children's pain: a review of behavioral, physiological and direct scaling techniques. *Pain* 1987;31(2):147-76. [published Online First: 1987/11/01]
43. Diener E. Subjective well-being. The science of happiness and a proposal for a national index. *The American psychologist* 2000;55(1):34-43. [published Online First: 2001/06/08]
44. Diener E, Emmons RA, Larsen RJ, et al. The Satisfaction With Life Scale. *Journal of personality assessment* 1985;49(1):71-5. doi: 10.1207/s15327752jpa4901\_13 [published Online First: 1985/02/01]

45. Cella D, Yount S, Rothrock N, et al. The Patient-Reported Outcomes Measurement Information System (PROMIS): progress of an NIH Roadmap cooperative group during its first two years. *Medical care* 2007;45(5 Suppl 1):S3-s11. doi: 10.1097/01.mlr.0000258615.42478.55 [published Online First: 2007/04/20]

46. Lai JS, Stucky BD, Thissen D, et al. Development and psychometric properties of the PROMIS((R)) pediatric fatigue item banks. *Quality of life research : an international journal of quality of life aspects of treatment, care and rehabilitation* 2013;22(9):2417-27. doi: 10.1007/s11136-013-0357-1 [published Online First: 2013/02/05]

47. Jaeschke R, Singer J, Guyatt GH. Measurement of health status. Ascertaining the minimal clinically important difference. *Controlled clinical trials* 1989;10(4):407-15. [published Online First: 1989/12/01]

48. Harris PA, Taylor R, Thielke R, et al. Research electronic data capture (REDCap) - a metadata-driven methodology and workflow process for providing translational research informatics support. *Journal of biomedical informatics* 2009;42(2):377-81. doi: 10.1016/j.jbi.2008.08.010 [published Online First: 2008/10/22]

49. Cohen E, Berry JG, Sanders L, et al. Status Complexicus? The Emergence of Pediatric Complex Care. *Pediatrics* 2018;141(Suppl 3):S202-s11. doi: 10.1542/peds.2017-1284E [published Online First: 2018/03/03]

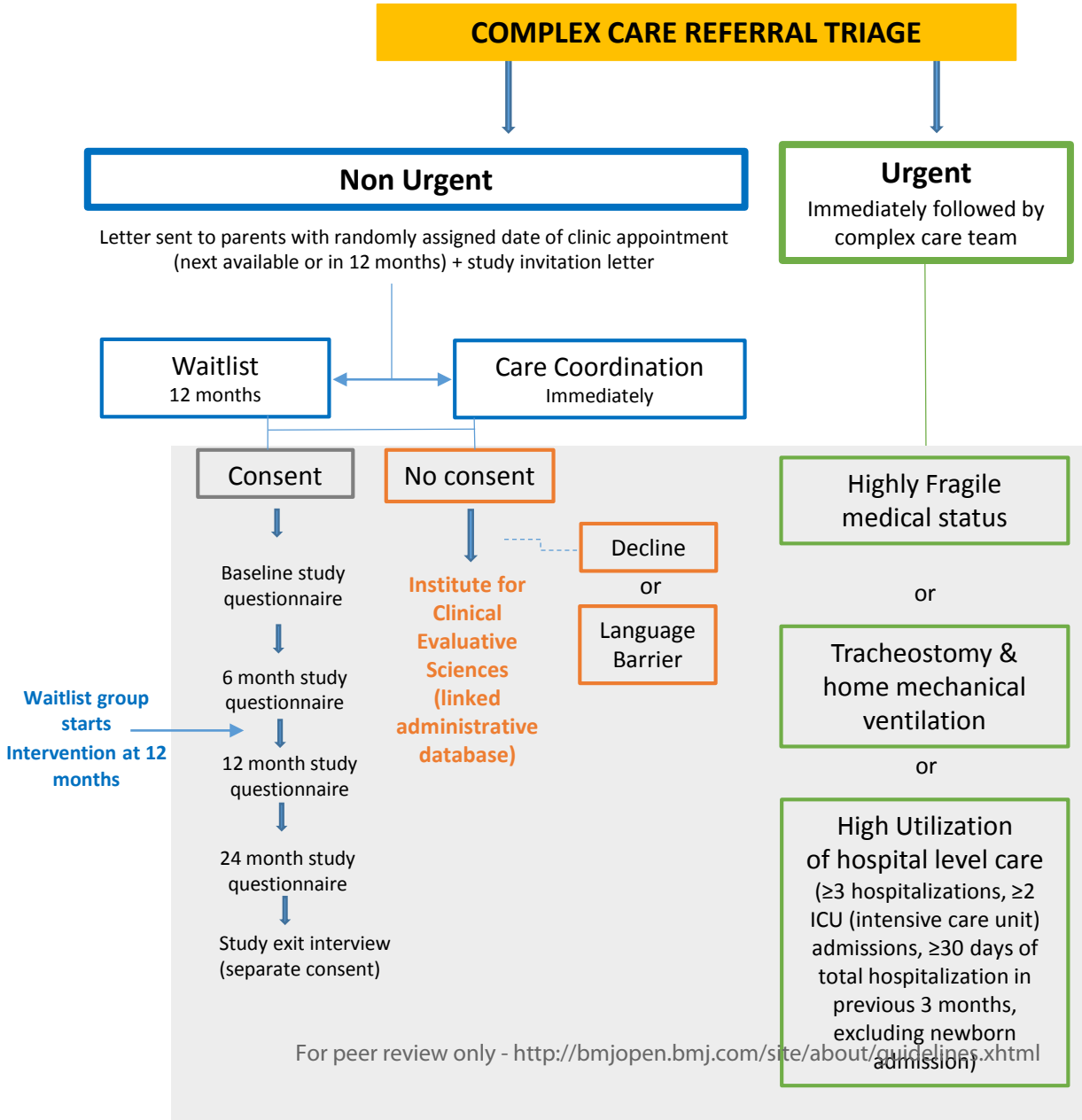
50. Lion KC, Mangione-Smith, R., Britto, M. T. Individualized plans of care to improve outcomes among children and adults with chronic illness: a systematic review. *Care management journals : Journal of case management ; The journal of long term home health care* 2014;15(1):11-25. [published Online First: 2014/04/26]

- 1  
2  
3 51. Hochman M AS. Disruptive Models in Primary Care: Caring for High-Needs, High-  
4 Cost Populations. *J Gen Intern Med* 2017;32(4):392-97.  
5  
6  
7  
8 52. Barnert ES CR, Nelson BB, Thompson LR, Chan V, Padilla C, Klitzner TS, Szilagyi  
9 M, Chung PJ. Experts' Perspectives toward a Population Health Approach for  
10 Children with Medical Complexity. *Acad Pediatr* 2017;17(6):672-77.  
11  
12  
13  
14  
15  
16  
17  
18  
19  
20  
21  
22  
23  
24  
25  
26  
27  
28  
29  
30  
31  
32  
33  
34  
35  
36  
37  
38  
39  
40  
41  
42  
43  
44  
45  
46  
47  
48  
49  
50  
51  
52  
53  
54  
55  
56  
57  
58  
59  
60

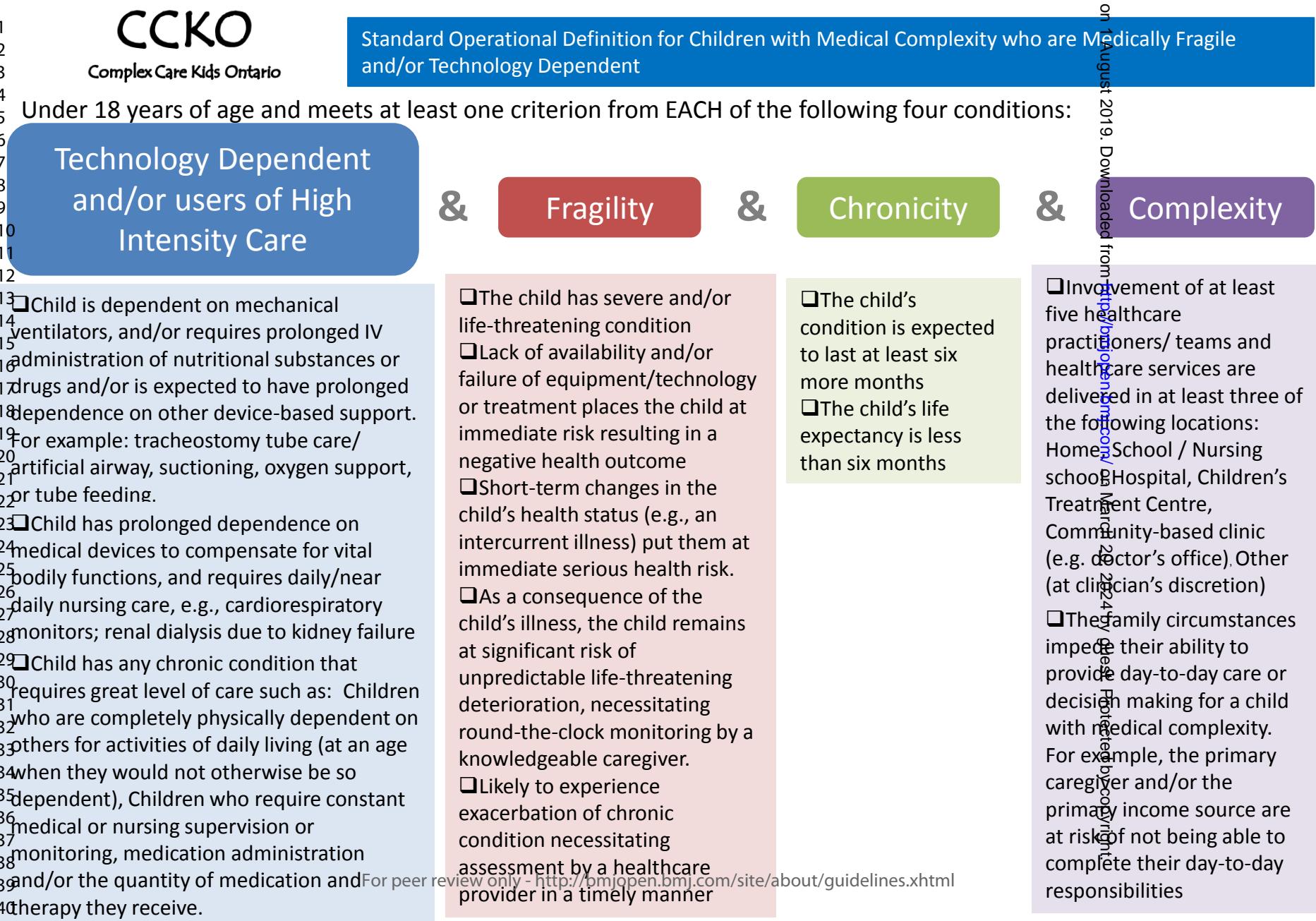


**Figure 1. Complex Care for Kids Ontario Evaluation Flow Chart for Referrals**

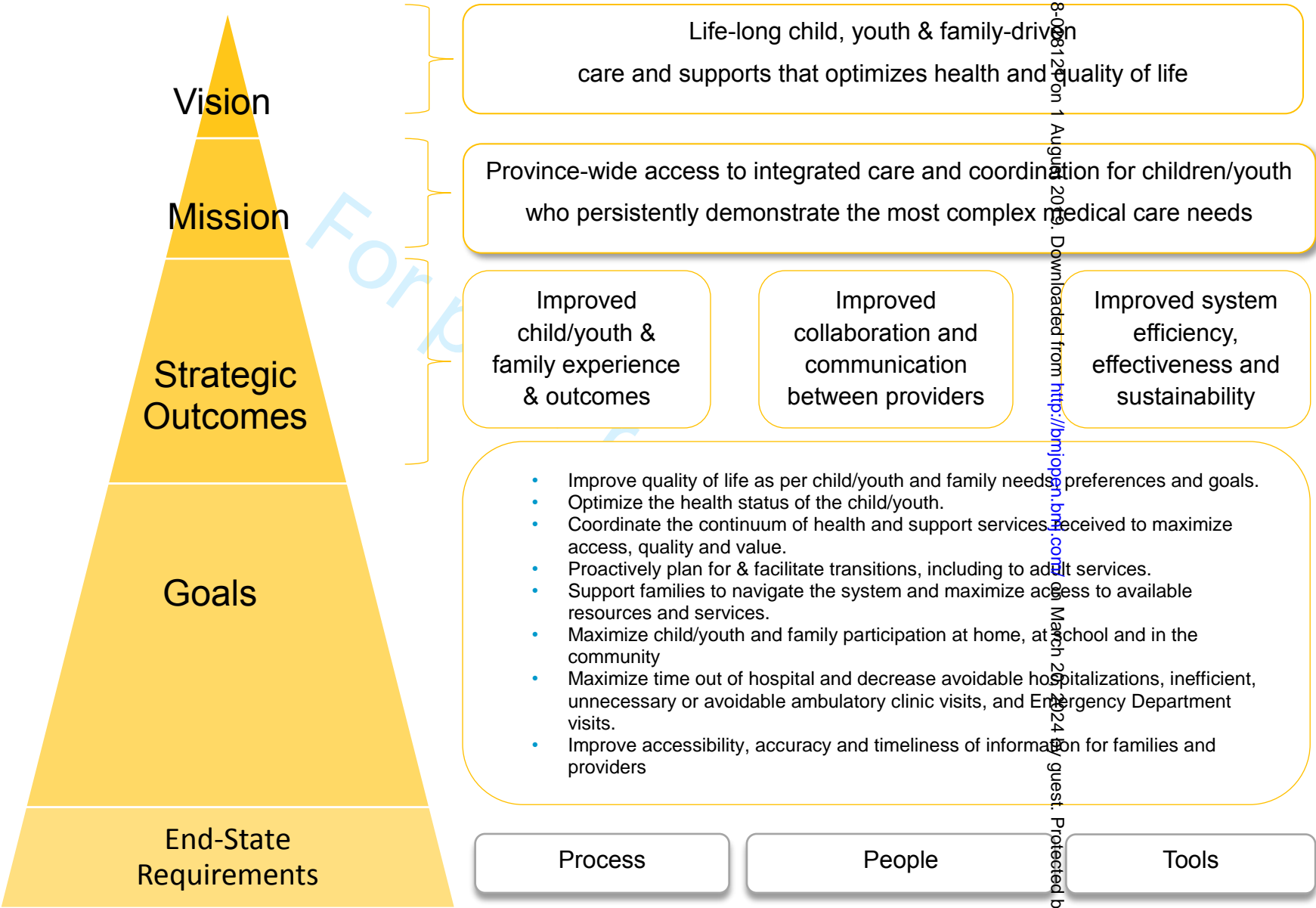
1  
2  
3  
4  
5  
6  
7  
8  
9  
10  
11  
12  
13  
14  
15  
16  
17  
18  
19  
20  
21  
22  
23  
24  
25  
26  
27  
28  
29  
30  
31  
32  
33  
34  
35  
36  
37  
38  
39  
40  
41



BMJ Open  
Figure 2. Complex Care for Kids Ontario Inclusion Criteria[30]



Appendix 1. Complex Care for Kids Ontario Strategic Framework[53]



136/bmjopen-2018-008120 on 1 August 2019. Downloaded from <http://bmjopen.bmj.com/> on March 25, 2024 by guest. Protected by copyright.

## Appendix 2. Complex Care for Kids Ontario Study Sites

Site Name	Location
The Hospital for Sick Children (SickKids)	Toronto, ON
Children's Hospital of Eastern Ontario	Ottawa, ON
London Health Sciences Centre	London, ON
Hamilton Health Sciences Centre	Hamilton, ON
North York General Hospital	Toronto, ON
Peterborough Regional Health Centre	Peterborough, ON
Orillia Soldiers' Memorial Hospital	Orillia, ON
Royal Victoria Hospital	Barrie, ON
Michael Garron Hospital	Toronto, ON
Credit Valley Hospital	Mississauga, ON

Appendix 3. Expense Diary

CQ1-EXTRACURRICULAR ACTIVITIES

CQ1a. Does your child participate in extracurricular activities (outings/sports/hobbies)?	<input type="checkbox"/> Yes <input type="checkbox"/> No (continue to CQ2a) <input type="checkbox"/> Don't Know (continue to CQ2a)
CQ1b How many hours of extracurricular activities does your child participate on average per month? (Describe to the best of ability)	_____ hours of activity on average per month

CQ2-ACADEMIC ACTIVITIES

CQ2a. Is your child currently enrolled in school outside the home?	<input type="checkbox"/> Yes <input type="checkbox"/> No Reason: _____ (continue to CQ3a)
CQ2b. If Yes, does your child attend full-time (every day) or part time?	<input type="checkbox"/> Full-time (continue to CQd) <input type="checkbox"/> Part time (continue to CQ2c)
CQ2c. If your child attends school part time, how many days of school do they attend per week on average?	<input type="checkbox"/> 1 day <input type="checkbox"/> 2 days <input type="checkbox"/> 3 days <input type="checkbox"/> 4 days <input type="checkbox"/> N/A
CQ2d. Thinking back over the past 6 months, how many days of school does your child miss on average per month?	_____ days missed on average per month
CQ2e. Thinking back over the past 6 months, how much do you spend on travel to/from school for your child on average per month?	\$_____ on average per month AND Distance travelled daily to get child to schooling _____ km

### CQ3. DOCTOR VISITS

These questions are only about when your child visited the doctor's office or clinic. This does not include emergency room visits or hospital stays.

CQ3a. Does your child use public transit, taxi or accessible transit services (e.g. Wheel trans)?	<input type="checkbox"/> Yes <input type="checkbox"/> No (continue to CQ3b)
CQ3ai. If your child uses public transit, taxi, or Wheel Trans, how much money do you usually spend traveling to and from the doctor's office/clinic per visit?	\$ _____
CQ3b. Do you or another family member drive to your child's doctor's office/clinic?	<input type="checkbox"/> Yes <input type="checkbox"/> No (continue to CQ3c)
CQ3bi. If you or another family member drives, what is the distance to your child's doctor's office/clinic?	_____ km
CQ3c. On average how much do you spend on parking at the doctor's office/clinic?	\$ _____ per visit ----- ----- <input type="checkbox"/> Nothing <input type="checkbox"/> Not applicable

CQ4-INSURANCE COVERAGE

CQ4a. Do you have a drug plan that pays for any of your child’s medications (ie. Employee benefit package, Ontario Drug Benefit, OHIP+)?	<input type="checkbox"/> Yes (continue to CQ5b) <input type="checkbox"/> No (continue to CQ5h) <input type="checkbox"/> Don’t Know (continue to CQ5h)
CQ4b What is your Drug Plan?	<input type="checkbox"/> 1. Employee benefit package <input type="checkbox"/> 2. Government program (ie. Ontario Drug Benefit, OHIP+) <input type="checkbox"/> 3. Other (Please specify:_____) <input type="checkbox"/> 4. Don’t know, don’t remember
CQ4c. When you have to pay for prescription drugs, what is the percentage of prescription medication costs that you pay on average?	_____% <input type="checkbox"/> Don’t know
CQ4d. Do you have a private health plan that covers other medical expenses such as physical therapy, ambulance services, medical devices etc?	<input type="checkbox"/> Yes <input type="checkbox"/> No (continue to CQ6a) <input type="checkbox"/> Don’t Know (continue to CQ6a)
CQ4e. How much do you or your partner pay into this plan or how much is deducted from your pay cheque per month?	\$_____ per month <input type="checkbox"/> Nothing <input type="checkbox"/> Don’t Know

CQ5. MEDICATION

CQ5a. Has [YOUTH] taken any prescription or over-the-counter medication in the last 6 months?	<input type="checkbox"/> Yes (complete table below) <input type="checkbox"/> No
---	--

If yes, please list any medication that you have taken in the last 6 months.

Name of medication	Reason [CHILD] takes this medication	Dose (mg)	Formulation (pill, liquid, inhaler, etc)	Frequency per day?



CQ5ba. Has your child used any over-the-counter medications, dietary supplements (e.g. vitamins), naturopathic, or homeopathic treatments in the last 6 months?	<input type="checkbox"/> Yes (complete table below) <input type="checkbox"/> No
---	--

If yes, please list items below:

Name of item	Reason [child] needs this	Financial coverage Check all that apply	If you paid some or all, please state the amount you paid (\$)
		<input type="checkbox"/> Insurance <input type="checkbox"/> Self Paid <input type="checkbox"/> Donated	
		<input type="checkbox"/> Insurance <input type="checkbox"/> Self Paid <input type="checkbox"/> Donated	
		<input type="checkbox"/> Insurance <input type="checkbox"/> Self Paid <input type="checkbox"/> Donated	
		<input type="checkbox"/> Insurance <input type="checkbox"/> Self Paid <input type="checkbox"/> Donated	
		<input type="checkbox"/> Insurance <input type="checkbox"/> Self Paid <input type="checkbox"/> Donated	
		<input type="checkbox"/> Insurance <input type="checkbox"/> Self Paid <input type="checkbox"/> Donated	
		<input type="checkbox"/> Insurance <input type="checkbox"/> Self Paid <input type="checkbox"/> Donated	

**CQ6. MEDICAL DEVICES**

CQ6a. Has your child needed to use any medical/assistance devices or equipment in the last 6 months (wheelchair, crutches, brace, syringes, VitaMix blender for special food preparation)?	<input type="checkbox"/> Yes (complete table below) <input type="checkbox"/> No
--	--

If yes, please list devices below:

Name of item	Reason [child] needs this	Financial coverage Check all that apply	If you paid some or all, please state the amount you paid (\$)
		<input type="checkbox"/> ADP (Assistive Devices Program) <input type="checkbox"/> Insurance <input type="checkbox"/> Self Paid <input type="checkbox"/> Donated	
		<input type="checkbox"/> ADP (Assistive Devices Program) <input type="checkbox"/> Insurance <input type="checkbox"/> Self Paid <input type="checkbox"/> Donated	
		<input type="checkbox"/> ADP (Assistive Devices Program) <input type="checkbox"/> Insurance <input checked="" type="checkbox"/> Self Paid <input type="checkbox"/> Donated	
		<input type="checkbox"/> ADP (Assistive Devices Program) <input type="checkbox"/> Insurance <input type="checkbox"/> Self Paid <input type="checkbox"/> Donated	

CQ7. EMERGENCY ROOM VISITS

These questions are only about when you had to bring your child to the emergency room. This does not include to doctor visits or to days when your child was admitted to the hospital.

CQ7a. Has your child gone to the hospital in an ambulance in the last 6 months?	<input type="checkbox"/> Yes <input type="checkbox"/> No (continue to CQ8g)
CQ7b. How many times did your child do so?	_____ # of times
CQ7e. Did you have to pay for the ambulance services?	<input type="checkbox"/> Yes <input type="checkbox"/> No (continue to CQ8g) <input type="checkbox"/> Don't know/can't remember (continue to CQ8g)
CQ7f. How much did you spend on these ambulance services per visit?	\$ _____
CQ7g. Has your child gone to the emergency room <b>by some other method of transportation</b> in the last 6 months?	<input type="checkbox"/> Yes <input type="checkbox"/> No (continue to CQ9)
CQ7h. How many times did your child do so?	_____ # of times
CQ7i. On average, how much did you spend on transportation to the emergency room (including parking, if applicable)?	\$ _____/visit

## CQ8. HOSPITAL ADMISSIONS

These questions are only about when your child was admitted to hospital. This does not include emergency room visits.

CQ8a. Has been admitted to the hospital in the last 6 months?	<input type="checkbox"/> Yes <input type="checkbox"/> No (continue to CQ10)
CQ8b. How many times was your child admitted to the hospital?	_____ # of times
CQ8c. On average, how much did you spend on transportation to the hospital (including parking, taxis, public transportation mileage)?	\$_____/day and Distance from home to hospital _____ km

CQ9. ALLIED HEALTH PROFESSIONALS AND SOCIAL SERVICE PROVIDERS

CQ9a. Has any allied health care or social service provider <b>COME TO VISIT your</b> child either at home, residence or school in the last 6 months? (See list of providers below)	<input type="checkbox"/> Yes <input type="checkbox"/> No
---	---

Providers include:

- Chiropractor

- Psychologist

- Physiotherapist

- Occupational Therapist

- Speech Language Pathologist

- Podiatrist or Chiropodist

- Nutritionist or Dietitian

- Nurse Practitioner

- Visiting Nurses (i.e., Home Care) or Private Nurse
- Optometrist

- Dentist

- Social Worker

- Naturopath or Homeopath

- Adolescent/school counsellor

- Children's aid

- Family counsellor

- Support group

If yes, please list service provider below (please do not enter provider's name):

Type of Health Professional	Number of visits	Average Amount Spent per Visit (\$)	Self paid or insurance?
	_____ average visits per month		<input type="checkbox"/> Self Paid <input type="checkbox"/> Insurance <input type="checkbox"/> Both If Both, what % by insurance? _____ <input type="checkbox"/> Don't know/can't remember
	_____ average visits per month		<input type="checkbox"/> Self Paid <input type="checkbox"/> Insurance <input type="checkbox"/> Both If Both, what % by insurance? _____ <input type="checkbox"/> Don't know/can't remember
	_____ average visits per month		<input type="checkbox"/> Self Paid <input type="checkbox"/> Insurance <input type="checkbox"/> Both If Both, what % by insurance? _____ <input type="checkbox"/> Don't know/can't remember

CQ9b. Has your child <b>GONE TO VISIT</b> any health care or social service provider at their place of practice (e.g. their office or at the hospital) in the last 6 months?	<input type="checkbox"/> Yes <input type="checkbox"/> No
--	---

If yes, please list service provider below (please do not enter provider's name):

Type of Health Professional	Number of visits	Average Amount Spent per Visit (\$)	Self paid or insurance?	Average amount spent on parking per visit (\$)	Mileage (km)
	_____ average visits per month		<input type="checkbox"/> Self Paid <input type="checkbox"/> Insurance <input type="checkbox"/> Both If Both, what % by insurance? _____		
	_____ average visits per month		<input type="checkbox"/> Self Paid <input type="checkbox"/> Insurance <input type="checkbox"/> Both If Both, what % by insurance? _____		
	_____ average visits per month		<input type="checkbox"/> Self Paid <input type="checkbox"/> Insurance <input type="checkbox"/> Both If Both, what % by insurance? _____		
	_____ average visits per month		<input type="checkbox"/> Self Paid <input type="checkbox"/> Insurance <input type="checkbox"/> Both If Both, what % by insurance? _____		

CQ10. LOSS OF TIME FROM WORK (PAID OR UNPAID)

CQ10a. Do you work in paid employment or are you on paid leave?	<input type="checkbox"/> Yes <input type="checkbox"/> No
CQ10b. Do you participate in any volunteer activities or unpaid employment?	<input type="checkbox"/> Yes <input type="checkbox"/> No
CQ10c. Thinking back over the past 6 months, have you had to miss any time from work/volunteer activities to go to the doctor, emergency room or while your child was admitted to the hospital?	<input type="checkbox"/> Yes <input type="checkbox"/> No (continue to CQ10e)
CQ10d. Thinking back over the past 6 months, can you estimate on average how many days per month have you had to take off?	_____ average days per month
CQ10e. Thinking back over the past 6 months, when your child went to the doctor, emergency room or was admitted to the hospital, <b>has anyone else</b> (such as another caregiver) had to miss time from paid employment to help you care for your child or accompany your child?	<input type="checkbox"/> Yes <input type="checkbox"/> No (continue to CQ10g) <input type="checkbox"/> Not applicable
CQ10f. Thinking back over the past 6 months, can you estimate on average how many days per month this other person had to take off each month?	_____ average days each month
CQ10g. Thinking back over the past 6 months, have you had to pay someone to care for your child (child in study) so that you could continue with your normal activities/homemaking or paid/unpaid employment?	<input type="checkbox"/> Yes <input type="checkbox"/> No (continue to CQ10i) <input type="checkbox"/> Don't know/Can't remember
CQ10h. Thinking back over the past 6 months, can you estimate on average how much you spent on this childcare per month?	Average spent per month \$ : _____ <input type="checkbox"/> Don't know/Can't remember
CQ10i. Thinking back over the past 6 months, were you or other family members prevented from engaging in any activities such as shopping, volunteer, work, visiting friends, going to the movies, etc. to care for your child?	<input type="checkbox"/> Yes <input type="checkbox"/> No (continue to CQ10k) <input type="checkbox"/> Don't know/Can't remember
CQ10j. Thinking back over the past 6 months, can you estimate on average how many days per month this was?	_____ average days per month
CQ10k. Thinking back over the past 6 months, were you or other family members prevented from engaging in your regular homemaking tasks to care for your child?	<input type="checkbox"/> Yes <input type="checkbox"/> No (go to CQ10m)

	<input type="checkbox"/> Don't know/Can't remember
CQ10l. Thinking back over the past 6 months, can you estimate on average how many days per month this was?	_____ average days per month
CQ10m. Thinking back over the past 6 months, have you had to pay for any individual to assist you with homemaking activities?	<input type="checkbox"/> Yes <input type="checkbox"/> No (go to CQ10o) <input type="checkbox"/> Not applicable
CQ10n. Thinking back over the past 6 months, can you estimate on average how much you spent per month on assistance with homemaking activities?	Amount spent per month \$ _____
CQ10o. Thinking back over the past 6 months, have you had to pay for any individual to care for your <b>other</b> children while you were caring for child in study?	<input type="checkbox"/> Yes <input type="checkbox"/> No (go to CQ11a) <input type="checkbox"/> Don't know/Can't remember
CQ10p. Thinking back over the past 6 months, can you estimate on average how much you spent childcare per month?	Amount spent per month \$ _____ <input type="checkbox"/> Don't know/Can't remember



**CQ11 – CHANGES TO HOME SUCH AS RENOVATIONS**

CQ11a. Have you had to do any changes to your home such as renovations (a ramp or a special bed) to accommodate your child?	<input type="checkbox"/> Yes <input type="checkbox"/> No (continue to CQ12)
CQ11b. How much in total did you pay for these changes to yourhome?	\$_____ spent in total on home renovations
CQ11c. What percentage of these costs were covered by other funding sources?	_____ %

**CQ12 – ACCESSIBLE VAN/VEHICLE**

CQ11a. Have you had to purchase an accessible van/vehicle to accommodate your child?	<input type="checkbox"/> Yes <input type="checkbox"/> No (continue to CQ13)
CQ11b. How much in total did you pay for the accessible van/vehicle?	\$_____ spent in total on accessible vehicle
CQ11c. What percentage of these costs were covered by other funding sources?	_____ %

**CQ13 – OTHER ONE-TIME EXPENSES**

CQ13a. Have you had any other one-time expenses to accommodate your child?	<input type="checkbox"/> Yes <input type="checkbox"/> No
CQ13b. What is the total of these costs?	\$_____ spent in total on other one-time expenses?

#### Appendix 4. List of Institute for Clinical Evaluative Sciences (ICES) Datasets

Dataset Name	Dataset Description
ADP	Assistive Devices Program: program which covers customized equipment and specialized supplies for low-income and most medically high-risk children - costing data for equipment and supplies
DAD	Discharge Abstract Database: hospital diagnostic codes
HCD	Home Care Database: provincial government in-home provider and case-management visits – home care data
IPDB	ICES physical database: care provider information
LHIN	Local Health Integration Network: coding and geography data
NACRS	National Ambulatory Care Reporting System: emergency and same-day surgery data
ODB	Ontario Drug Benefit: program which covers medications for low-income and most medically high-risk children – medication costing data
OHIP	Ontario Health Insurance Plan: physician billing – costing data
OMHRS	Ontario Mental Health Reporting System: mental health care services use data
PCCF	Postal Code Conversion File: geography data
RPDB	Registered Persons Database: demographic and vital statistic data for all Ontario residents eligible for public health insurance

DEMOGRAPHIC QUESTIONS

Site/Study ID: \_\_\_\_\_ Date m m/d d/y y y y

Child's Birthday: \_\_\_\_\_ / \_\_\_\_\_  
mm yyyy

Child's Gender:

☐ Male  
☐ Female  
☐ Inter-sex  
☐ Other

DQ1. What is your relationship to the child?

<input type="checkbox"/> Mother	<input type="checkbox"/> Stepmother
<input type="checkbox"/> Father	<input type="checkbox"/> Stepfather
<input type="checkbox"/> Guardian	<input type="checkbox"/> Other (please specify:_____)
<input type="checkbox"/> Sister	
<input type="checkbox"/> Brother	
<input type="checkbox"/> Relative (please specify:_____)	

DQ2. What is your sex?

☐ Female  
☐ Male

DQ3. What is your age?  
\_\_\_\_\_ years old

DQ4. Were you born in Canada?

☐ Yes \* go to DQ5  
☐ No

DQ5. When did you immigrate to Canada?

Year: \_\_\_\_\_

DQ6. How would you describe your ethnic background?

☐ African  
☐ Asian  
☐ Canadian  
☐ Caribbean/ West Indian  
☐ East European  
☐ European  
☐ South Asian

# DEMOGRAPHIC QUESTIONS

Site/Study ID: \_\_\_\_\_

Date m m/d d/ y y y y☐ Other (please specify: \_\_\_\_\_)

**DQ7.** What language is spoken most often at home?

- |   |  |
|---|--|
| <input type="checkbox"/> English            | <input type="checkbox"/> Portuguese                    |
| <input type="checkbox"/> French             | <input type="checkbox"/> Punjabi                       |
| <input type="checkbox"/> Arabic             | <input type="checkbox"/> Somali                        |
| <input type="checkbox"/> Bengali            | <input type="checkbox"/> Spanish                       |
| <input type="checkbox"/> Filipino           | <input type="checkbox"/> Tagalog                       |
| <input type="checkbox"/> Gujarati           | <input type="checkbox"/> Tamil                         |
| <input type="checkbox"/> Hindi              | <input type="checkbox"/> Urdu                          |
| <input type="checkbox"/> Italian            | <input type="checkbox"/> Vietnamese                    |
| <input type="checkbox"/> Mandarin/Cantonese | <input type="checkbox"/> Other (please specify: _____) |
| <input type="checkbox"/> Persian            |  |
| <input type="checkbox"/> Polish             |  |

**DQ8.** What is your marital status?

- ☐ Married or living common-law
- ☐ Single (never been married)
- ☐ Widow or widower
- ☐ Separated or divorced

# DEMOGRAPHIC QUESTIONS

Site/Study ID: \_\_\_\_\_ Date m m/d d/y y y y

**DQ9.** What is the highest level of education that you have attained?

- ☐ Elementary school (some or completed)
- ☐ Some secondary/high school
- ☐ Completed secondary/high school
- ☐ Some post-secondary (university or college)
- ☐ Received university or college degree/diploma

**DQ10.** What is the highest level of education that your spouse / partner has attained?

- ☐ Elementary school (some or completed)
- ☐ Some secondary/high school
- ☐ Completed secondary/high school
- ☐ Some post-secondary (university or college)
- ☐ Received university or college degree/ diploma
- ☐ Not applicable

**DQ11.** Which best describes your current employment status?

- |   |   |
|---|---|
| <input type="checkbox"/> Employed full-time                 | <input type="checkbox"/> Unemployed                                 |
| <input type="checkbox"/> Employed full-time (self-employed) | <input type="checkbox"/> Homemaker                                  |
| <input type="checkbox"/> Employed part-time                 | <input type="checkbox"/> Receiving social assistance                |
| <input type="checkbox"/> Employed part-time (self-employed) | <input type="checkbox"/> Receiving disability or retirement pension |
|   | <input type="checkbox"/> Student                                    |

**DQ12.** Which best describes your spouse's/partner's current employment status?

- ☐ Employed full-time
- ☐ Employed full-time (self-employed)
- ☐ Employed part-time
- ☐ Employed part-time (self-employed)
- ☐ Unemployed
- ☐ Homemaker
- ☐ Receiving social assistance
- ☐ Receiving disability or retirement pension
- ☐ Student
- ☐ Not applicable

# DEMOGRAPHIC QUESTIONS

Site/Study ID: \_\_\_\_\_

Date m m/d d/y y y y

**DQ12.** Including yourself, how many members are there living in your home?

Number of persons: \_\_\_\_\_

For peer review only

Appendix 6

Baseline Clinical Info (RA to Complete)

Study ID

Demographic Questions

Child's month of birth

☐ January

☐ February

☐ March

☐ April

☐ May

☐ June

☐ July

☐ August

☐ September

☐ October

☐ November

☐ December

Child's year of birth

☐ 2018

☐ 2017

☐ 2016

☐ 2015

☐ 2014

☐ 2013

☐ 2012

☐ 2011

☐ 2010

☐ 2009

☐ 2008

☐ 2007

☐ 2006

☐ 2005

☐ 2004

☐ 2003

☐ 2002

☐ 2001

☐ 2000

☐ 1999

☐ 1998

What is child's biological sex?

☐ Male

☐ Female

☐ Intersex

What is child's ethnic background?

☐ African

☐ Asian

☐ Canadian

☐ Caribbean/West Indian

☐ East European

☐ European

☐ South Asian

☐ Don't Know

☐ Other

If other, please specify:

Child in group home (residential care)?

- ☐ Yes  
☐ No

Child in foster care?

- ☐ Yes  
☐ No

Did this participant change institutions for the duration of the study?

- ☐ Yes  
☐ No

If yes, what is their new institution?

- ☐ Sickkids  
☐ McMaster  
☐ CHEO  
☐ London  
☐ North York General  
☐ Royal Victoria  
☐ Orillia  
☐ Peterborough  
☐ Michael Garron  
☐ Credit Valley

### Parent Demographics

Parent's age

\_\_\_\_\_

### Important Dates

Date of randomization (YYYY-MM-DD)

\_\_\_\_\_

Date of consent (YYYY-MM-DD)

\_\_\_\_\_

Date of baseline questionnaire completion (YYYY-MM-DD)

\_\_\_\_\_

### Baseline Hospitalization

Was the child admitted as an in-patient in the time period between randomization, consent, and baseline questionnaire completion?

- ☐ Yes  
☐ No

If the child was an in-patient during this time period, how many times were they hospitalized?

- ☐ 1  
☐ 2  
☐ 3  
☐ 4  
☐ 5

Hospitalization 1: date of admission (yyyy-mm-dd)?

\_\_\_\_\_

Hospitalization 1: date of discharge (yyyy-mm-dd)?

\_\_\_\_\_

Hospitalization 1: length of hospitalization (in days)

\_\_\_\_\_



1

2

3

4

5

6

7

8

9

10

11

12

13

14

15

16

17

18

19

20

21

22

23

24

25

26

27

28

29

30

31

32

33

34

35

36

37

38

39

40

41

42

43

44

45

46

47

48

49

50

51

52

53

54

55

56

57

58

59

60

Hospitalization 2: date of admission (yyyy-mm-dd)?

Hospitalization 2: date of discharge (yyyy-mm-dd)?

Hospitalization 2: length of hospitalization (in days)

Hospitalization 3: date of admission (yyyy-mm-dd)?

Hospitalization 3: date of discharge (yyyy-mm-dd)?

Hospitalization 3: length of hospitalization (in days)

Hospitalization 4: date of admission (yyyy-mm-dd)?

Hospitalization 4: date of discharge (yyyy-mm-dd)?

Hospitalization 4: length of hospitalization (in days)

Hospitalization 5: date of admission (yyyy-mm-dd)?

Hospitalization 5: date of discharge (yyyy-mm-dd)?

Hospitalization 5: length of hospitalization (in days)

Diagnosis

What is the child's primary diagnosis?

What are the child's secondary diagnoses?

**Medication**

Does the child take any medication?

☐ Yes☐ No

Number of medications:

☐ 1☐ 2☐ 3☐ 4☐ 5☐ 6☐ 7☐ 8☐ 9☐ 10☐ 11☐ 12☐ 13☐ 14☐ 15☐ 16☐ 17☐ 18☐ 19☐ 20

Medication 1: Name of Medication \_\_\_\_\_

Reason for medication: \_\_\_\_\_

Medication 2: Name of Medication \_\_\_\_\_

Reason for medication: \_\_\_\_\_

Medication 3: Name of Medication \_\_\_\_\_

Reason for medication: \_\_\_\_\_

Medication 4: Name of Medication \_\_\_\_\_

Reason for medication: \_\_\_\_\_

Medication 5: Name of Medication \_\_\_\_\_

Reason for medication: \_\_\_\_\_

Medication 6: Name of Medication \_\_\_\_\_

1

Reason for medication:

2

3

4

5

Medication 7: Name of Medication

6

7

8

Reason for medication:

9

10

11

12

Medication 8: Name of Medication

13

14

15

Reason for medication:

16

17

18

19

Medication 9: Name of Medication

20

21

22

Reason for medication:

23

24

25

26

Medication 10: Name of Medication

27

28

29

Reason for medication:

30

31

32

33

Medication 11: Name of Medication

34

35

36

Reason for medication:

37

38

39

40

Medication 12: Name of Medication

41

42

43

Reason for medication:

44

45

46

47

Medication 13: Name of Medication

48

49

50

Reason for medication:

51

52

53

54

Medication 14: Name of Medication

55

56

57

Reason for medication:

58

59

60

60

Medication 15: Name of Medication

Reason for medication:

Medication 16: Name of Medication

Reason for medication:

Medication 17: Name of Medication

Reason for medication:

Medication 18: Name of Medication

Reason for medication:

Medication 19: Name of Medication

Reason for medication:

Medication 20: Name of Medication

Reason for medication:

## Diet

Which best describes the child's diet?

- ☐ Oral  
☐ G tube  
☐ Oral and G tube

Please describe the details of their [child\_diet] diet:

## Medical/Technology Devices

Does the child use any medical or technology devices?

- ☐ Yes  
☐ No

1

2

3

4

5

6

7

8

9

10

11

Number of medical devices:

☐ 1

☐ 2

☐ 3

☐ 4

☐ 5

☐ 6

☐ 7

☐ 8

☐ 9

☐ 10

12

13

14

15

16

17

18

19

20

21

22

23

24

25

26

27

28

29

30

31

32

33

34

35

36

37

38

39

40

41

42

43

44

45

46

47

48

49

50

51

52

53

54

55

56

57

58

59

60

Please select all the medical/technology devices the child is currently using:

Feeding

☐ G Tube

☐ GJ Tube

☐ NG Tube

Respiratory

☐ Nebulizer

☐ Oxygen

☐ CPap

☐ BiPap

☐ Tracheostomy

☐ Ventilation

☐ Suction

Mobility

☐ Wheelchair

☐ Special Stroller

☐ Special Seating

☐ Walker/Stander

☐ Prosthetics

☐ Ankle and food orthotics

Other

☐ Hearing Aid

☐ Glasses

☐ Feeding pump

☐ Wheelchair van

☐ Mechanical lift

☐ Oxygen saturation monitors

☐ Other

If other, please specify:

Communication

Is the child older than 12 months?

☐ Yes

☐ No

How would you describe their communication skills?

☐ Verbal

☐ Non-verbal

For peer review only - <http://bmjopen.bmj.com/site/about/guidelines.xhtml>

**Gross Motor Functioning**

Does the child have difficulties with gross motor functioning?

- ☐ Yes  
☐ No

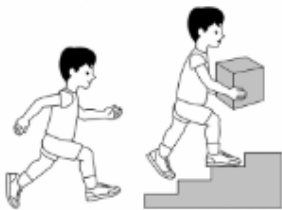
Is the child older than 2 years of age?

- ☐ Yes  
☐ No

Using the Gross Motor Function Classification System (GMFCS), how would you describe the child's current level of motor functioning?

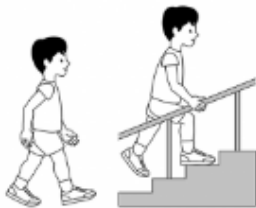
- ☐ Level I  
☐ Level II  
☐ Level III  
☐ Level IV  
☐ Level V  
☐ N/A

Gross Motor Function Classification System (GMFS):



GMFCS Level I

Children walk at home, school, outdoors and in the community. They can climb stairs without the use of a railing. Children perform gross motor skills such as running and jumping, but speed, balance and coordination are limited.



GMFCS Level II

Children walk in most settings and climb stairs holding onto a railing. They may experience difficulty walking long distances and balancing on uneven terrain, inclines, in crowded areas or confined spaces. Children may walk with physical assistance, a handheld mobility device or used wheeled mobility over long distances. Children have only minimal ability to perform gross motor skills such as running and jumping.



GMFCS Level III

Children walk using a hand-held mobility device in most indoor settings. They may climb stairs holding onto a railing with supervision or assistance. Children use wheeled mobility when traveling long distances and may self-propel for shorter distances.



GMFCS Level IV

Children use methods of mobility that require physical assistance or powered mobility in most settings. They may walk for short distances at home with physical assistance or use powered mobility or a body support walker when positioned. At school, outdoors and in the community children are transported in a manual wheelchair or use powered mobility.



GMFCS Level V

Children are transported in a manual wheelchair in all settings. Children are limited in their ability to maintain antigravity head and trunk postures and control leg and arm movements.

## Hospital Visits

Over the past year..

How many hospital visits has the child had?

- ☐ 1  
☐ 2  
☐ 3  
☐ 4  
☐ 5  
☐ 6  
☐ 7  
☐ 8  
☐ 9  
☐ 10  
☐ 11  
☐ 12  
☐ 13  
☐ 14  
☐ 15  
☐ 16  
☐ 17  
☐ 18  
☐ 19  
☐ 20  
☐ 21  
☐ 22  
☐ 23  
☐ 24  
☐ 25  
☐ 26  
☐ 27  
☐ 28  
☐ 29  
☐ 30  
☐ 31  
☐ 32  
☐ 33  
☐ 34  
☐ 35  
☐ 36  
☐ 37  
☐ 38  
☐ 39  
☐ 40  
☐ 41  
☐ 42  
☐ 43  
☐ 44  
☐ 45  
☐ 46  
☐ 47  
☐ 48  
☐ 49  
☐ 50  
☐ 50+

If there were over 50 hospital visits, please specify the number:

\_\_\_\_\_

How many of these were clinic visits:

\_\_\_\_\_



1

2

3

4

5

6

7

8

9

10

11

How many of these were diagnostic visits?

How many of these were emergency visits:

How many of these were day surgery visits:

12

13

14

15

16

17

18

19

20

21

22

23

24

25

26

27

28

29

30

31

32

33

34

35

36

37

38

39

40

41

42

43

44

45

46

47

48

49

50

51

52

53

54

55

56

57

58

59

60

Misc Comments

For peer review only



# CONSORT 2010 checklist of information to include when reporting a randomised trial\*

Section/Topic	Item No	Checklist item	Reported on page No
<b>Title and abstract</b>			
	1a	Identification as a randomised trial in the title	Page 1 – line 3
	1b	Structured summary of trial design, methods, results, and conclusions (for specific guidance see CONSORT for abstracts)	Page 2 – lines 28-47
<b>Introduction</b>			
Background and objectives	2a	Scientific background and explanation of rationale	Page 5 – lines 3-54
	2b	Specific objectives or hypotheses	Page 6 – lines 3-52 Page 6 - lines 49-52
<b>Methods</b>			
Trial design	3a	Description of trial design (such as parallel, factorial) including allocation ratio	Page 7 – lines 5-54
	3b	Important changes to methods after trial commencement (such as eligibility criteria), with reasons	N/A
Participants	4a	Eligibility criteria for participants	Page 8 – lines 15-52 Page 9 – lines 3-36
	4b	Settings and locations where the data were collected	Page 8 – lines 3-10
Interventions	5	The interventions for each group with sufficient details to allow replication, including how and when they were actually administered	Page 9 – lines 40-54 Page 10 – lines 3-47
Outcomes	6a	Completely defined pre-specified primary and secondary outcome measures, including how and when they were assessed	Page 11 – lines 15-55

1				Page 12 –
2				lines 3-56
3				Page 13 –
4				lines 3-54
5				Page 14 – 3-6
6				N/A
7		6b	Any changes to trial outcomes after the trial commenced, with reasons	
8	Sample size	7a	How sample size was determined	Page 14 –
9				lines 10-29
10				N/A
11		7b	When applicable, explanation of any interim analyses and stopping guidelines	
12	Randomisation:			
13	Sequence	8a	Method used to generate the random allocation sequence	Page 15 –
14	generation			lines 3-22
15		8b	Type of randomisation; details of any restriction (such as blocking and block size)	Page 15 –
16				lines 10-22
17				
18	Allocation	9	Mechanism used to implement the random allocation sequence (such as sequentially numbered containers),	
19	concealment		describing any steps taken to conceal the sequence until interventions were assigned	
20	mechanism			Page 15 –
21				lines 10-22
22				
23	Implementation	10	Who generated the random allocation sequence, who enrolled participants, and who assigned participants to	Page 15 –
24			interventions	lines 10-22
25				
26	Blinding	11a	If done, who was blinded after assignment to interventions (for example, participants, care providers, those	
27			assessing outcomes) and how	N/A
28		11b	If relevant, description of the similarity of interventions	N/A
29				
30	Statistical methods			
31		12a	Statistical methods used to compare groups for primary and secondary outcomes	Page 16 –
32				lines 26-54
33				Page 17 –
34				lines 3-20
35				
36		12b	Methods for additional analyses, such as subgroup analyses and adjusted analyses	Page 17 –
37				lines 22-29
38				
39	<b>Results</b>			
40	Participant flow (a	13a	For each group, the numbers of participants who were randomly assigned, received intended treatment, and	N/A
41	diagram is strongly		were analysed for the primary outcome	
42				

recommended)	13b	For each group, losses and exclusions after randomisation, together with reasons	N/A
Recruitment	14a	Dates defining the periods of recruitment and follow-up	N/A
	14b	Why the trial ended or was stopped	N/A
Baseline data	15	A table showing baseline demographic and clinical characteristics for each group	N/A
Numbers analysed	16	For each group, number of participants (denominator) included in each analysis and whether the analysis was by original assigned groups	N/A
Outcomes and estimation	17a	For each primary and secondary outcome, results for each group, and the estimated effect size and its precision (such as 95% confidence interval)	N/A
	17b	For binary outcomes, presentation of both absolute and relative effect sizes is recommended	N/A
Ancillary analyses	18	Results of any other analyses performed, including subgroup analyses and adjusted analyses, distinguishing pre-specified from exploratory	N/A
Harms	19	All important harms or unintended effects in each group (for specific guidance see CONSORT for harms)	N/A
<b>Discussion</b>			
Limitations	20	Trial limitations, addressing sources of potential bias, imprecision, and, if relevant, multiplicity of analyses	Page 19 – lines 24-54
			Page 20 – lines 3-8
Generalisability	21	Generalisability (external validity, applicability) of the trial findings	Page 18 – lines 33-40
Interpretation	22	Interpretation consistent with results, balancing benefits and harms, and considering other relevant evidence	N/A
<b>Other information</b>			
Registration	23	Registration number and name of trial registry	Page 22 – line 9
Protocol	24	Where the full trial protocol can be accessed, if available	Page 21 – lines 8-10
Funding	25	Sources of funding and other support (such as supply of drugs), role of funders	Page 22 – lines 11-15

\*We strongly recommend reading this statement in conjunction with the CONSORT 2010 Explanation and Elaboration for important clarifications on all the items. If relevant, we also recommend reading CONSORT extensions for cluster randomised trials, non-inferiority and equivalence trials, non-pharmacological treatments, herbal interventions, and pragmatic trials. Additional extensions are forthcoming: for those and for up to date references relevant to this checklist, see [www.consort-statement.org](http://www.consort-statement.org).

For peer review only

## Correction: *Complex care for kids Ontario: protocol for a mixed-methods randomised controlled trial of a population-level care coordination initiative for children with medical complexity*

Orkin J, Chan CY, Fayed N, *et al.* Complex care for kids Ontario: protocol for a mixed-methods randomised controlled trial of a population-level care coordination initiative for children with medical complexity. *BMJ Open* 2019;9:e028121. doi: 10.1136/bmjopen-2018-028121.

This article was previously published with errors in data.

- ▶ In the 'Primary outcome' section, there's a typo: it says "as they hadve content relation to: "; it should instead read "as they have content relation to:"
- ▶ In the 'Sample size' section,
  - The last sentence in the first paragraph is missing the second part. It should read: 'projected smallest clinically important difference of 0.5 of the within-patient SD, which is recommended by the developer as a moderate effect size.'
  - The second paragraph should start with 'The required sample size is considered feasible as it is estimated that a pool of about 250 patients are readily identifiable for recruitment at CCKO sites.'

**Open access** This is an open access article distributed in accordance with the Creative Commons Attribution Non Commercial (CC BY-NC 4.0) license, which permits others to distribute, remix, adapt, build upon this work non-commercially, and license their derivative works on different terms, provided the original work is properly cited, appropriate credit is given, any changes made indicated, and the use is non-commercial. See: <http://creativecommons.org/licenses/by-nc/4.0/>.

© Author(s) (or their employer(s)) 2019. Re-use permitted under CC BY-NC. No commercial re-use. See rights and permissions. Published by BMJ.

*BMJ Open* 2019;9:e028121corr1. doi:10.1136/bmjopen-2018-028121corr1

