

# BMJ Open Nurse-led, screening-triggered, early specialised palliative care intervention programme for patients with advanced lung cancer: study protocol for a multicentre randomised controlled trial

Daisuke Fujisawa <sup>1,2</sup>, Shigeki Umemura,<sup>3</sup> Ayumi Okizaki <sup>4,5,6</sup>, Eriko Satomi,<sup>7</sup> Takuhiro Yamaguchi,<sup>8</sup> Tempei Miyaji <sup>5,9</sup>, Tomoe Mashiko,<sup>5</sup> Naoko Kobayashi,<sup>10</sup> Hiroya Kinoshita,<sup>11</sup> Masanori Mori,<sup>12</sup> Tatsuya Morita,<sup>12</sup> Yosuke Uchitomi,<sup>5,6</sup> Koichi Goto,<sup>3</sup> Yuichiro Ohe,<sup>13</sup> Yoshihisa Matsumoto <sup>4</sup>

**To cite:** Fujisawa D, Umemura S, Okizaki A, *et al*. Nurse-led, screening-triggered, early specialised palliative care intervention programme for patients with advanced lung cancer: study protocol for a multicentre randomised controlled trial. *BMJ Open* 2020;**10**:e037759. doi:10.1136/bmjopen-2020-037759

► Prepublication history and additional material for this paper are available online. To view these files, please visit the journal online (<http://dx.doi.org/10.1136/bmjopen-2020-037759>).

Received 14 February 2020  
Revised 14 October 2020  
Accepted 15 October 2020



© Author(s) (or their employer(s)) 2020. Re-use permitted under CC BY-NC. No commercial re-use. See rights and permissions. Published by BMJ.

For numbered affiliations see end of article.

## Correspondence to

Dr Yoshihisa Matsumoto;  
yosmatsu@east.ncc.go.jp

## ABSTRACT

**Introduction** It has been suggested that palliative care integrated into standard cancer treatment from the early phase of the disease can improve the quality of life of patients with cancer. In this paper, we present the protocol for a multicentre randomised controlled trial to examine the effectiveness of a nurse-led, screening-triggered, early specialised palliative care intervention programme for patients with advanced lung cancer.

**Methods and analysis** A total of 206 patients will be randomised (1:1) to the intervention group or the control group (usual care). The intervention, triggered with a brief self-administered screening tool, comprises comprehensive need assessments, counselling and service coordination by advanced-level nurses. The primary outcome is the Trial Outcome Index of the Functional Assessment of Cancer Therapy (FACT) at 12 weeks. The secondary outcomes include participants' quality of life (FACT-Lung), depression (Patient Health Questionnaire-9), anxiety (Generalized Anxiety Disorder-7), illness perception (Prognosis and Treatment Perceptions Questionnaire), medical service use and survival. A mixed-method approach is expected to provide an insight about how this intervention works.

**Ethics and dissemination** This study has been approved by the Institutional Review Board of the National Cancer Center Japan (approval number: 2016-235). The findings will be disseminated through peer-reviewed publications and conference presentations and will be reflected on to the national healthcare policy.

**Trial registration number** UMIN000025491.

## INTRODUCTION

Cancer, especially advanced cancer, affects patients both physically and psychosocially. Therefore, provision of comprehensive supportive care to patients, along with anti-cancer treatments, is an essential aspect of quality cancer care. It has been suggested that provision of palliative care even from

## Strengths and limitations of this study

- This is the protocol paper for the first randomised controlled trial in Japan to examine the effectiveness of a palliative care programme integrated into standard cancer treatment in patients with advanced lung cancer.
- We present a low-cost novel model for delivering specialised palliative care, by combining screening and stepped-care approach, referring to it as a nurse-led, screening-triggered, early specialised palliative care intervention programme.
- A possible limitation is that the study only targets patients with advanced lung cancer in two tertiary cancer centres.

the early phase of cancer along with standard oncological care (early palliative care integrated with standard oncological care: EPC) lessens patients' symptom burden and yields beneficial effects on their quality of life (QOL).<sup>1</sup> A breakthrough study by Temel *et al*<sup>2</sup> demonstrated that provision of palliative care integrated into standard cancer treatment soon after the diagnosis of advanced lung cancer improves the QOL, severity of depressive symptoms and overall survival of patients, compared with usual oncology care. Several randomised controlled studies have replicated the efficacy of EPC.<sup>3–5</sup>

However, a few limitations have been pointed out on these EPC studies. First, the results of the studies have been inconsistent.<sup>6–8</sup> Several models of EPC delivery have been described, and while studies where palliative care specialists provided care for all patients from first contact revealed the clinical efficacy of EPC, a study where advanced-level



nurses served as the primary palliative care provider failed to demonstrate significant effects of EPC.<sup>6</sup> As the former approach is costly and is only feasible in facilities with abundant medical resources, exploration/establishment of an effective but more feasible model of EPC is desired.<sup>9</sup>

Theoretically, use of screening can be a solution to implement a cost-effective programme with limited human resources, and its implementation has been recommended 'as granted' in many clinical guidelines.<sup>10,11</sup> However, the effectiveness of distress screening has not yet been confirmed. A randomised controlled study of the effectiveness of a screening programme for ambulatory patients with cancer demonstrated effectiveness in lung cancer, but not in patients with breast cancer.<sup>12</sup> Another randomised trial involving 220 patients with cancer who underwent radiation and/or chemotherapy failed to yield any significant effect of distress screening on patient-reported outcomes, QOL or cost-effectiveness of care.<sup>13</sup> In general, screening per se does not yield meaningful clinical effects and needs to be combined with subsequent second-step evaluation and provision of appropriate care.<sup>14,15</sup>

Another limitation of EPC studies is that the mechanism underlying the beneficial effect of EPC has not been confirmed. Improvement in patients' perception of their illness, discussion between clinicians and patients about methods of coping with the illness, and clinicians' support on patients' decision-making are presumed to mediate the effectiveness of EPC; however, evidence still needs to be collected.<sup>16,17</sup> Studies to uncover the actual core components of EPC interventions are warranted.

Further, the efficacy of palliative care service is influenced by sociocultural situations and the medical system under which it is provided. Therefore, development of a conceptual model that is both feasible as well as desirable under the sociocultural condition where it is provided is important. In Japan, the Basic Plan to Promote Cancer Control enacted by the Japanese government addresses palliative care as an essential component in the care of patients with cancer and promotes the provision of palliative care from the time cancer is first diagnosed.<sup>18</sup> However, an effective model of EPC delivery has not yet been established due to the limited number of palliative care specialists. The rate of use of palliative care services remains low as compared with other countries.

Bearing these issues in mind, the authors conceived of a novel model for delivering specialised palliative care, by combining screening and a stepped-care approach, referring to it as a nurse-led, screening-triggered, early specialised palliative care intervention programme. In this model, patients who are potentially in need of palliative care first undergo a brief screening. A positive screen triggers further assessment by an advanced-level nurse, who provides counselling and serves as a segue to relevant health professionals. We examined the feasibility of this intervention in 50 patients with advanced lung cancer in a single-arm, pre-post design study,<sup>19</sup> where we observed satisfactory feasibility of the intervention and improved

QOL and psychological status among the participants. We targeted patients with advanced lung cancer because lung cancer ranks very high both in terms of prevalence and mortality. Mortality is especially high in patients with advanced disease (stage IV non-small cell lung cancer (NSCLC) and extensive disease small cell lung cancer (SCLC), with an estimated median overall survival of 11–14 months and 12–14 months in these two groups, respectively<sup>20,21</sup>), which warrants provision of specialised palliative care.

Therefore, in the study described herein, we aim to examine the effectiveness of our nurse-led, screening-triggered, early specialised palliative care intervention programme using a randomised controlled study design. We hypothesised that our intervention would be more beneficial than standard oncological care in maintaining QOL of patients with advanced lung cancer. We also aim to collect information on the core effective elements of our palliative intervention using a mixed-method analysis approach.

## METHODS AND ANALYSIS

This protocol paper is reported in accordance with the Standard Protocol Items: Recommendations for Interventional Trials guidelines<sup>22</sup> (online supplemental material 1).

### Design

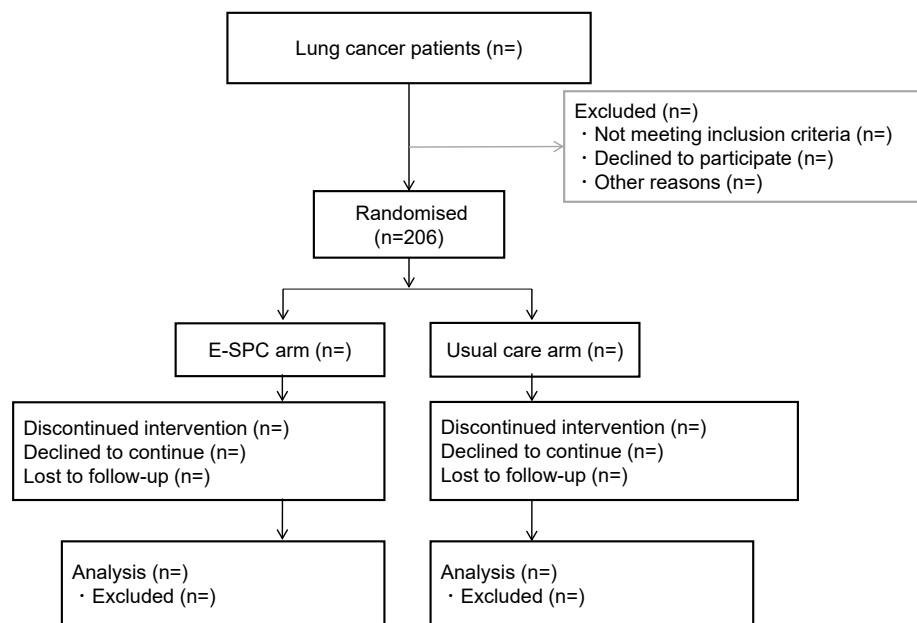
This is a multicentre, parallel-group, randomised controlled trial. The participants are randomised to the intervention group (nurse-led, screening-triggered palliative care intervention) or to the control group (standard oncological care) at a 1:1 ratio (figure 1). The allocation is stratified by (1) histological type of cancer (NSCLC or SCLC), (2) study site and (3) age of participants (<75 years or ≥75 years). Blinding is impossible due to the nature of the intervention and the analysis of patient-reported outcomes. We will adopt a mixed-method approach for the analysis, as advocated by the UK Medical Research Council, setting multiple secondary endpoints and conducting qualitative analysis.<sup>23</sup>

### Setting

This study is being conducted in two comprehensive cancer centres in Japan (National Cancer Center East in Kashiwa and National Cancer Center Hospital in Tokyo). Both facilities are tertiary medical facilities dedicated to cancer treatment and research.

### Participants

Eligibility criteria of participants are as follows: (1) pathologically or cytologically confirmed diagnosis of lung cancer; (2) stage IV NSCLC or extensive disease SCLC; (3) negative or unknown status of gene mutations for which molecular targeted therapy is applicable (eg, *EGFR*, *ALK*, *ROS1* or *BRAF*); (4) scheduled for first-line chemotherapy (other than immunotherapy); (5) absence of any



Participant flow diagram. E-SPC, Early-Specialized Palliative Care.

**Figure 1** Flow diagram. E-SPC, early specialised palliative care.

previous anticancer treatment for lung cancer (including chemotherapy, surgery, radiation therapy with curative intent and/or immunotherapy); (6) initial administration of first-line chemotherapy in an inpatient setting; (7) age 20 years or over; and (8) willing to provide written informed consent.

Subjects are excluded if they (1) have already received specialised palliative care interventions (including psycho-oncology care); (2) have severe cognitive impairment; (3) are unable to comprehend Japanese; (4) are already participating in other interventional studies which prohibit participation in the current research; or (5) are considered ineligible for this study by the physician in charge.

## RECRUITMENT

The participants are recruited from the thoracic oncology divisions of the National Cancer Center Hospital, Tokyo, Japan, and the National Cancer Center East, Kashiwa, Japan. Patients who meet the above-mentioned eligibility criteria are consecutively approached by the research staff. After providing written consent, the participants are allocated to the intervention group or the control group.

## SAMPLE SIZE

We recruit 206 participants in total to potentially obtain statistically significant differences in the primary outcome (change in the Trial Outcome Index (TOI) from baseline to 12 weeks) between the intervention group and

the control group, with an estimated SD score of 14 and an intraclass correlation of 0.6. With 80% power to detect a significant difference at a 5% alpha level (one-sided) and an estimated attrition rate of 36% by week 12, the required sample size is calculated as 103 participants in each arm. A 5-point difference in the mean TOI score is considered a clinically meaningful change in anticancer treatments.<sup>24</sup> In a cutting-edge study of early palliative care, Temel *et al* demonstrated a 5.1-point difference in mean TOI between the intervention group and the control group.<sup>2</sup> Further, in our previous feasibility study,<sup>19</sup> an improvement in mean TOI by 5.5 points (52.3±14.8 at baseline vs 58.8±13.2 at study completion) was observed.

## Interventions

### Intervention group

Patients who are allocated to the intervention group receive the nurse-led, screening-triggered, specialised palliative care. This programme comprises the following components.

### Screening

Initial intervention starts with the administration of a brief self-completed screening questionnaire. This self-administered screening questionnaire comprises questions in four subscales, namely physical distress, psychological distress, socioeconomic need, and concerns about the illness or its treatment, which will be described later in this manuscript.



### *Counselling and care coordination by an advanced-level nurse*

A positive result of screening for any of physical distress, psychological distress or socioeconomic need subscales of the above-mentioned questionnaire prompts intervention by the specialised palliative care team. One of the advanced-level nurses belonging to the team primarily contacts the patient and conducts a comprehensive assessment using a checklist covering physical, psychological, social and medical/informative aspects. During this process, the advanced-level nurse attempts to provide the following care, based on the findings of a previous palliative care study<sup>17</sup>: (1) building rapport; (2) symptom management; (3) facilitating patients' coping with cancer diagnosis; (4) facilitating patients' understanding of the illness and the treatment; (5) counselling on anticancer treatment and its adverse effects; (6) preparation for cancer progression and end of life; and (7) facilitating family involvement. The advanced-level nurse may achieve these aims by providing the counselling himself/herself or by coordinating referral to other professionals as necessary. For example, he/she refers a patient to a medical social worker if he/she has financial problems. If a patient expresses concern about his/her illness or the treatment, the advanced-level nurse will notify the physician and/or the nurses responsible for the care of the patient.

### *Interdisciplinary team approach*

Participants' care plans are reviewed regularly by an interdisciplinary palliative care team. For hospitalised patients, they are reviewed weekly by a team consisting of palliative care physicians, palliative care nurses, psychiatrists, psychologists, social workers, pharmacists and nutritionists. For ambulatory patients, the plans are reviewed every 2 weeks by one of the advanced-level nurses and a board-certified palliative care physician. Based on this regular review, further specialised palliative care intervention is provided by other professionals.

### *Follow-up*

Once the intervention by the specialised palliative care team begins, it is continued until the end of the study period (5 months). One of the advanced-level nurses meets the participant at least once a month for ambulatory patients and at least once a week for hospitalised patients.

For patients who are found to be negative on screening, the brief screening is repeated every month, with a 3-week margin. The intervention by the specialised palliative care team is withheld until (if ever) the screening turns positive; however, the team provides services on request by patients, their family or the medical professionals attending the patients. Participants continue to receive the usual oncological care during the study period.

The nurses who engage in this intervention (1) need to be an advanced-level nurse (certified nurse or certified nurse specialist) in the relevant specialised fields, which will be described later; and (2) need to have received

at least 10 hours of training based on the intervention manual (available on request addressed to the corresponding author). Certified nurses are qualified nurses who have at least 5 years of clinical experience and have received at least 6 months of advanced-level training in one of 21 specialised areas. Certified nurse specialists are master-level nurses who have at least 5 years of clinical experience and have received at least 2 years of advanced-level training in one of 10 specialised areas. Both of the credentials are authenticated by the Japanese Nursing Association.<sup>25</sup> In the current study, certified nurses in palliative care, certified nurses in cancer pain management nursing, certified nurse specialists in cancer nursing and certified nurse specialists in psychiatric mental health nursing are eligible for participation.

### *Control group*

Patients who are assigned to the control group receive usual oncological care. They are not scheduled to meet with the palliative care service team unless it is requested by the patient, by his/her family or by the treating oncologists.

### **Measurements**

#### *Primary outcome*

The primary outcome measure in this study is change in TOI from baseline to completion of the intervention (at 12 weeks). The TOI represents the physical situation and the quality of life of patients with lung cancer and is considered an important endpoint in clinical trials.<sup>26</sup> The TOI is calculated as the sum of the scores of the physical well-being subscale, functional well-being subscale and lung cancer subscale (LCS) of the Functional Assessment of Cancer Therapy-Lung (FACT-L).

#### *Secondary outcomes*

##### *Disease-specific QOL*

We use the FACT-L to evaluate participants' QOL. The FACT-L is a combination of the Functional Assessment of Cancer Therapy-General (FACT-G) and the LCS. The FACT-G assesses multiple dimensions of QOL (physical, functional, emotional and social well-being) of patients with lung cancer during the previous week. Higher scores indicate better QOL. The LCS evaluates seven symptoms that are specific to lung cancer. The FACT-L is self-administered by patients at three time points in this study: at baseline and at 3 months and 5 months postrandomisation.

##### *Global QOL*

We use the EuroQoL 5-Dimension to measure participants' global QOL.<sup>27</sup> The scale consists of two parts: a Visual Analogue Scale (VAS) and a self-classifier. The self-classifier has been recognised as showing better concordance with other QOL measures than VAS; therefore, we use the self-classifier in our study. The self-classifier comprises five items, namely mobility, self-care, usual activities, pain/discomfort and anxiety/depression. Respondents' answer to each question is graded on



a 5-point scale. Combinations of these responses are converted to a single score (health utility value) using a conversion table called 'tariff'. The scale has been widely used in the cancer population and has been validated in the Japanese population.<sup>28 29</sup>

### Depression

We use the Patient Health Questionnaire-9 (PHQ-9), a nine-item self-reported instrument, to measure the severity of depression in patients.<sup>30</sup> Higher score indicates greater severity of depression. A total score of 10 or more indicates clinically significant depression. A patient is diagnosed as having major depressive syndrome if he or she answers in the affirmative at least five of the nine symptoms of depression on the scale, with either anhedonia or depressed mood as one of the symptoms. The PHQ-9 has been used in numerous clinical studies of patients with cancer<sup>31</sup> and has been validated in the Japanese population.<sup>32</sup>

### Anxiety

We use the Generalized Anxiety Disorder-7 (GAD-7), a seven-item self-reported instrument, to measure the level of anxiety.<sup>33</sup> A score of 10 or more out of a total score of 21 indicates clinically significant anxiety. The GAD-7 has been validated in the Japanese population.<sup>34</sup> Both PHQ-9 and GAD-7 are recommended by the American Society of Clinical Oncology as screening tools to detect psychological distress in patients with cancer.<sup>35</sup>

### Brief screening questionnaire

We use a brief screening questionnaire for initial screening and follow-up during the study period. This questionnaire consists of four domains: physical, psychological, social and medical/information needs. Physical distress is assessed with a single question enquiring the level of physical symptoms; the patient indicates his/her response on a 5-point Likert scale (from 0: no physical distress to 4: persistent unendurable physical distress). This question was adopted from the physical domain of the Support Team Assessment Schedule.<sup>36</sup> A score of 2 or over is indicative of physical distress. The psychological domain corresponds to the Distress and Interference Thermometer, a well-established screening tool which has been validated and widely used in the Japanese cancer population.<sup>37 38</sup> The scale consists of a single item to rate the level of psychological distress on a thermometer-shaped numeric scale (from 0: no distress to 10: extreme distress) and a single item to rate the level of interference with daily life activities arising from the distress (from 0: no interference to 10: extreme interference). Based on a previous report, a distress score of 4 or over and an interference score of 3 or over indicate psychological distress.<sup>39</sup> The presence of social distress is evaluated by a single question, that is, 'Do you currently have any concern on financial issues, employment issues or any other issues in daily living?' The participants are asked to select an answer from the following: 'Yes', 'No current concern,

but want to talk with someone on these issues' and 'No concern at all'. The first two responses are indicative of social distress. The fourth domain of the questionnaire is designed to enquire about participants' need for more information on their illness and/or treatment, using the following question: 'Do you currently have any concern or do you have anything you want to know further on your illness and/or treatment?'

### Illness perception

We measure participants' prognostic perceptions using the Prognosis and Treatment Perceptions Questionnaire. This 13-item questionnaire is used to assess a patient's beliefs regarding (1) the likelihood of cure; (2) the importance and helpfulness of knowing about the prognosis; (3) the primary goal of cancer care; (4) preference about receiving/not receiving information about the treatment; and (5) satisfaction with the quality of information received about the prognosis and treatment. The questionnaire has been validated in a mixed cancer population.<sup>40</sup>

### Other clinical outcomes

We collect data on patients' survival (1-year survival rate and overall survival period), medical service use and circumstances of death (date and place of death, number of days of hospitalisation within the last month of life, days and types of the last chemotherapy administration, last administration of intravenous chemotherapy, hospice use, and rate of cardiopulmonary resuscitation). We selected these variables based on well-established quality indicators of end-of-life cancer care and reports from previous studies on early palliative care intervention.<sup>2 3 41</sup> We record contents of and the time spent for the intervention provided by the specialised palliative care. We also compile adverse events according to the Common Terminology Criteria for Adverse Events, Fourth Version. The participants will be followed up for 2 years after study enrolment.

### Qualitative evaluation of the intervention

A semistructured interview of patients providing consent for the interview is conducted at week 12. The interview is designed to determine the general impression of the intervention, the components that the participants perceived as being helpful, the components that the participants perceived as being harmful, the subjective changes that were perceived after the intervention as compared with before, and the issues that the participants found as helpful to obtain a better understanding of their illness and treatment.

### Schedule of outcome measurements

The schedule of these outcome measurements is shown in [table 1](#).

### Statistical analyses

All randomised participants who satisfy the eligibility criteria and receive the study intervention will be included in statistical analyses. For the primary endpoint, point estimates and CIs of the mean change in TOI from baseline to 12 weeks will be calculated for each group and compared between groups

**Table 1** Schedule of outcome measurements

Assessment	Time points						
	0 week	4 weeks	8 weeks	12 weeks	16 weeks	20 weeks	Follow-up§
Characteristics of participants	●						
Chemotherapeutic regimen							●
Brief screening questionnaire*	●	●†	●†	●†	●†		
EQ-5D, FACT-L, GAD-7, PHQ-9, PTPQ	●			●		●	
Satisfaction with the intervention				●		●	
Semistructured interview‡				●			
Medical service use at the end of life							●
Survival status							●

\*Will be evaluated among participants in the intervention group.

†Will be evaluated among participants in the intervention group who have not received intervention up to that time point.

‡Will be conducted among participants in the intervention group who submitted oral consent for the interview.

§Will be conducted in 2 years after the last assessment.

EQ-5D, EuroQoL 5-Dimension; FACT-L, Functional Assessment of Cancer Therapy-Lung; GAD-7, Generalized Anxiety Disorder-7; PHQ-9, Patient Health Questionnaire-9; PTPQ, Physical Therapy Practice Questionnaire.

using a general linear model, with adjustments for allocation factors and baseline TOI. When the number of subjects in each stratum is small, the handling of the allocation adjustment factors will be determined in this analysis plan. The mean change in TOI, after the adjustments, in the groups will be estimated and compared.

### Data collection and monitoring

The investigators at each study site maintain individual records for each patient as source data, including a copy of the informed consent, medical records, laboratory data and other records or notes, maintaining confidentiality. All data are collected by the Japan Supportive, Palliative and Psycho-social Oncology Group (J-SUPPORT) Data Center at the Center for Public Health Science, National Cancer Center Japan. The data management centre oversees the intrastudy data sharing process. Patient enrolment, randomisation, data entry, data management and central monitoring are performed using the REDCap electronic data capture application (Vanderbilt University).<sup>42</sup> Central data monitoring reports are compiled by the clinical data managers twice a year and reported to the principal and site investigators. Auditing is not planned for this study.

### Ethical considerations and registration

This study is conducted in accordance with the principles of the Declaration of Helsinki and the Ethics Guideline for Clinical Studies of 2014 published by the Japan Ministry of Health, Labour and Welfare. The study has been approved by the Institutional Review Board of the National Cancer Center Japan (approval number: 2016-235). This protocol has been reviewed by the protocol review committee of J-SUPPORT and has been approved as the J-SUPPORT 1603 study. The study has been registered at the Japanese Clinical Trial Registry.

### Patient and public involvement

This study protocol was reviewed by patient and public involvement (PPI) representatives. The PPI representatives meet the research team regularly at the progress report meetings, provide advice on the progress of the study and will help the team develop dissemination strategy.

### DISCUSSION

This paper presents the protocol of a parallel-group, randomised controlled study to examine the effectiveness of a nurse-led, screening-triggered, early specialised palliative care intervention programme. This programme represents a combination of self-administered screening and subsequent care led by an advanced-level nurse, who undertakes comprehensive assessment, counselling and care coordination. If this programme is proven to be effective in improving QOL and alleviating distress of patients with cancer, it would be considered a universally applicable model of early palliative care.

There are a few limitations to this study. First, our intervention is undertaken only in two tertiary cancer centres, both of which are rich in staff with expertise in cancer care and palliative care, as compared with other medical facilities. It would be difficult, therefore, to exclude the possibility that the programme proves less effective at facilities that are not as well staffed. Second, we target only patients with advanced lung cancer and the findings would need to be verified in other cancer populations.

### Trial status

This ongoing study was started in January 2017 and the recruitment of participants was closed in September 2019. The registered participants are currently under intervention or under observation for assessments, which will be continued until September 2021.

### Author affiliations

- <sup>1</sup>Department of Neuropsychiatry, Keio University School of Medicine, Shinjuku-ku, Tokyo, Japan
- <sup>2</sup>Psycho-Oncology Division, National Cancer Center Hospital East, Kashiwa, Chiba, Japan
- <sup>3</sup>Department of Thoracic Oncology, National Cancer Center Hospital East, Kashiwa, Chiba, Japan
- <sup>4</sup>Department of Palliative Medicine, National Cancer Center Hospital East, Kashiwa, Chiba, Japan
- <sup>5</sup>Innovation Center for Supportive, Palliative and Psychosocial Care, National Cancer Center Hospital, Chuo-ku, Tokyo, Japan
- <sup>6</sup>Behavioral and Survivorship Research Group, Center for Public Health Sciences, National Cancer Center Hospital, Chuo-ku, Tokyo, Japan
- <sup>7</sup>Department of Palliative Medicine, National Cancer Center Hospital, Chuo-ku, Tokyo, Japan
- <sup>8</sup>Division of Biostatistics, Tohoku University School of Medicine, Sendai, Miyagi, Japan
- <sup>9</sup>Department of Clinical Trial Data Management, Graduate School of Medicine, The University of Tokyo, Bunkyo-ku, Tokyo, Japan
- <sup>10</sup>Department of Nursing, National Cancer Center Hospital East, Kashiwa, Chiba, Japan
- <sup>11</sup>Department of Palliative Care, Tokatsu Hospital, Nagareyama, Chiba, Japan
- <sup>12</sup>Palliative and Supportive Care, Seirei Mikatahara Hospital, Hamamatsu, Shizuoka, Japan
- <sup>13</sup>Department of Thoracic Oncology, National Cancer Center Hospital, Chuo-ku, Tokyo, Japan

**Contributors** DF, SU, AO, ES, TY, TeM, ToM, NK, HK, MM, TaM, YU, KG, YO and YM contributed to study conception and design. TY, TeM and ToM advised on statistical analysis and management of the database. TaM and YU supervised the project. TY, TeM, ToM, AO and YM have access to the data and will perform the data analysis and all coauthors will be involved in interpretation of data. DF and AO wrote the first draft of the manuscript and all coauthors reviewed the manuscript and provided critical revisions. All authors have approved the final version of the manuscript.

**Funding** This work was supported by the Japan Agency for Medical Research and Development (AMED) (grant number JP16ck0106213 and JP19ck0106502), and the Japan Health, Labour and Welfare Sciences Research Grants (grant number of H27-Cancer Control-general-002).

**Competing interests** None declared.

**Patient consent for publication** Not required.

**Provenance and peer review** Not commissioned; externally peer reviewed.

**Supplemental material** This content has been supplied by the author(s). It has not been vetted by BMJ Publishing Group Limited (BMJ) and may not have been peer-reviewed. Any opinions or recommendations discussed are solely those of the author(s) and are not endorsed by BMJ. BMJ disclaims all liability and responsibility arising from any reliance placed on the content. Where the content includes any translated material, BMJ does not warrant the accuracy and reliability of the translations (including but not limited to local regulations, clinical guidelines, terminology, drug names and drug dosages), and is not responsible for any error and/or omissions arising from translation and adaptation or otherwise.

**Open access** This is an open access article distributed in accordance with the Creative Commons Attribution Non Commercial (CC BY-NC 4.0) license, which permits others to distribute, remix, adapt, build upon this work non-commercially, and license their derivative works on different terms, provided the original work is properly cited, appropriate credit is given, any changes made indicated, and the use is non-commercial. See: <http://creativecommons.org/licenses/by-nc/4.0/>.

### ORCID iDs

Daisuke Fujisawa <http://orcid.org/0000-0003-1913-6955>  
 Ayumi Okizaki <http://orcid.org/0000-0001-6685-965X>  
 Tempei Miyaji <http://orcid.org/0000-0001-8370-1352>  
 Yoshihisa Matsumoto <http://orcid.org/0000-0003-3112-4818>

### REFERENCES

- Haun MW, Estel S, Rücker G, *et al*. Early palliative care for adults with advanced cancer. *Cochrane Database Syst Rev* 2017;6:CD011129.
- Temel JS, Greer JA, Muzikansky A, *et al*. Early palliative care for patients with metastatic non-small-cell lung cancer. *N Engl J Med* 2010;363:733–42.
- Zimmermann C, Swami N, Krzyzanowska M, *et al*. Early palliative care for patients with advanced cancer: a cluster-randomised controlled trial. *Lancet* 2014;383:1721–30.
- El-Jawahri A, Traeger L, Greer JA, *et al*. Effect of inpatient palliative care during hematopoietic stem-cell transplant on psychological distress 6 months after transplant: results of a randomized clinical trial. *J Clin Oncol* 2017;35:3714–21.
- Temel JS, Greer JA, El-Jawahri A, *et al*. Effects of early integrated palliative care in patients with lung and GI cancer: a randomized clinical trial. *J Clin Oncol* 2017;35:834–41.
- Bakitas MA, Tosteson TD, Li Z, *et al*. Early versus delayed initiation of concurrent palliative oncology care: patient outcomes in the enable III randomized controlled trial. *J Clin Oncol* 2015;33:1438–45.
- Johnsen AT, Petersen MA, Sjøgren P, *et al*. Exploratory analyses of the Danish palliative care trial (DanPaCT): a randomized trial of early specialized palliative care plus standard care versus standard care in advanced cancer patients. *Support Care Cancer* 2020;28:2145–55.
- Maltoni M, Scarpi E, Dall'Agata M, *et al*. Systematic versus on-demand early palliative care: a randomised clinical trial assessing quality of care and treatment aggressiveness near the end of life. *Eur J Cancer* 2016;69:110–8.
- Parikh RB, Kirch RA, Smith TJ, *et al*. Early specialty palliative care-translating data in oncology into practice. *N Engl J Med* 2013;369:2347–51.
- Denlinger CS, Sanft T, Baker KS, *et al*. Survivorship, version 2.2018, NCCN clinical practice guidelines in oncology. *J Natl Compr Canc Netw* 2018;16:1216–47.
- Andersen BL, Rowland JH, Somerfield MR. Screening, assessment, and care of anxiety and depressive symptoms in adults with cancer: an American Society of clinical oncology guideline adaptation. *J Oncol Pract* 2015;11:133–4.
- Carlson LE, Groff SL, Maciejewski O, *et al*. Screening for distress in lung and breast cancer outpatients: a randomized controlled trial. *J Clin Oncol* 2010;28:4884–91.
- Hollingworth W, Metcalfe C, Mancero S, *et al*. Are needs assessments cost effective in reducing distress among patients with cancer? A randomized controlled trial using the distress thermometer and problem list. *J Clin Oncol* 2013;31:3631–8.
- Mitchell AJ. Screening for cancer-related distress: when is implementation successful and when is it unsuccessful? *Acta Oncol* 2013;52:216–24.
- Carlson LE, Waller A, Mitchell AJ. Screening for distress and unmet needs in patients with cancer: review and recommendations. *J Clin Oncol* 2012;30:1160–77.
- Temel JS, Greer JA, Admane S, *et al*. Longitudinal perceptions of prognosis and goals of therapy in patients with metastatic non-small-cell lung cancer: results of a randomized study of early palliative care. *J Clin Oncol* 2011;29:2319–26.
- Yoong J, Park ER, Greer JA, *et al*. Early palliative care in advanced lung cancer: a qualitative study. *JAMA Intern Med* 2013;173:283–90.
- Welfare MoHLa. *Promotion plan for the platform of human resource development for cancer (in Japanese)*, 2018.
- Matsumoto Y, Umemura S, Kobayashi N, *et al*. *Early palliative care for patients with metastatic lung cancer receiving chemotherapy: a feasibility study of a nurse-led screening program*. Copenhagen, Denmark: 14th World Congress of the European Association for Palliative Care, 2015.
- Ohe Y, Ohashi Y, Kubota K, *et al*. Randomized phase III study of cisplatin plus irinotecan versus carboplatin plus paclitaxel, cisplatin plus gemcitabine, and cisplatin plus vinorelbine for advanced non-small-cell lung cancer: Four-Arm cooperative study in Japan. *Ann Oncol* 2007;18:317–23.
- Noda K, Nishiwaki Y, Kawahara M, *et al*. Irinotecan plus cisplatin compared with etoposide plus cisplatin for extensive small-cell lung cancer. *N Engl J Med* 2002;346:85–91.
- Calvert M, Kyte D, Mercieca-Bebber R, *et al*. Guidelines for inclusion of patient-reported outcomes in clinical trial protocols: the SPIRIT-PRO extension. *JAMA* 2018;319:483–94.
- Craig P, Dieppe P, Macintyre S, *et al*. Developing and evaluating complex interventions: the new medical Research Council guidance. *BMJ* 2008;337:a1655.
- Cella D, Eton DT, Fairclough DL, *et al*. What is a clinically meaningful change on the functional assessment of cancer Therapy-Lung (FACT-L) questionnaire? results from eastern cooperative Oncology Group (ECoG) study 5592. *J Clin Epidemiol* 2002;55:285–95.
- Association TJN. The JNA Activities - Credentialing. Available: <https://www.nurse.or.jp/jna/english/>



- 26 Cella DF, Bonomi AE, Lloyd SR, *et al.* Reliability and validity of the functional assessment of cancer Therapy-Lung (FACT-L) quality of life instrument. *Lung Cancer* 1995;12:199–220.
- 27 Rabin R, de Charro F. EQ-5D: a measure of health status from the EuroQol group. *Ann Med* 2001;33:337–43.
- 28 Pickard AS, Wilke CT, Lin H-W, *et al.* Health utilities using the EQ-5D in studies of cancer. *Pharmacoeconomics* 2007;25:365–84.
- 29 Tsuchiya A, Ikeda S, Ikegami N, *et al.* Estimating an EQ-5D population value set: the case of Japan. *Health Econ* 2002;11:341–53.
- 30 Spitzer RL, Kroenke K, Williams JB. Validation and utility of a self-report version of PRIME-MD: the PHQ primary care study. primary care evaluation of mental disorders. patient health questionnaire. *JAMA* 1999;282:1737–44.
- 31 Wakefield CE, Butow PN, Aaronson NA, *et al.* Patient-reported depression measures in cancer: a meta-review. *Lancet Psychiatry* 2015;2:635–47.
- 32 Muramatsu K, Miyaoka H, Kamijima K, *et al.* The patient health questionnaire, Japanese version: validity according to the mini-international neuropsychiatric interview-plus. *Psychol Rep* 2007;101:952–60.
- 33 Spitzer RL, Kroenke K, Williams JBW, *et al.* A brief measure for assessing generalized anxiety disorder: the GAD-7. *Arch Intern Med* 2006;166:1092–7.
- 34 Muramatsu K, Miyaoka H, Kamijima K, *et al.* Validity and usefulness of the Japanese version of the GAD-7. *Jpn J Psychosom Med* 2010;50:592.
- 35 Andersen BL, DeRubeis RJ, Berman BS, *et al.* Screening, assessment, and care of anxiety and depressive symptoms in adults with cancer: an American Society of clinical oncology guideline adaptation. *J Clin Oncol* 2014;32:1605–19.
- 36 Miyashita M, Matoba K, Sasahara T, *et al.* Reliability and validity of the Japanese version of the support team assessment schedule (STAS-J). *Palliat Support Care* 2004;2:379–85.
- 37 Shimizu K, Akechi T, Okamura M, *et al.* Usefulness of the nurse-assisted screening and psychiatric referral program. *Cancer* 2005;103:1949–56.
- 38 Akizuki N, Yamawaki S, Akechi T, *et al.* Development of an impact thermometer for use in combination with the distress thermometer as a brief screening tool for adjustment disorders and/or major depression in cancer patients. *J Pain Symptom Manage* 2005;29:91–9.
- 39 Kugaya A, Akechi T, Okuyama T, *et al.* Screening for psychological distress in Japanese cancer patients. *Jpn J Clin Oncol* 1998;28:333–8.
- 40 El-Jawahri A, Traeger L, Park ER, *et al.* Associations among prognostic understanding, quality of life, and mood in patients with advanced cancer. *Cancer* 2014;120:278–85.
- 41 Earle CC, Park ER, Lai B, *et al.* Identifying potential indicators of the quality of end-of-life cancer care from administrative data. *J Clin Oncol* 2003;21:1133–8.
- 42 Harris PA, Taylor R, Thielke R, *et al.* Research electronic data capture (REDCap)—a metadata-driven methodology and workflow process for providing translational research informatics support. *J Biomed Inform* 2009;42:377–81.